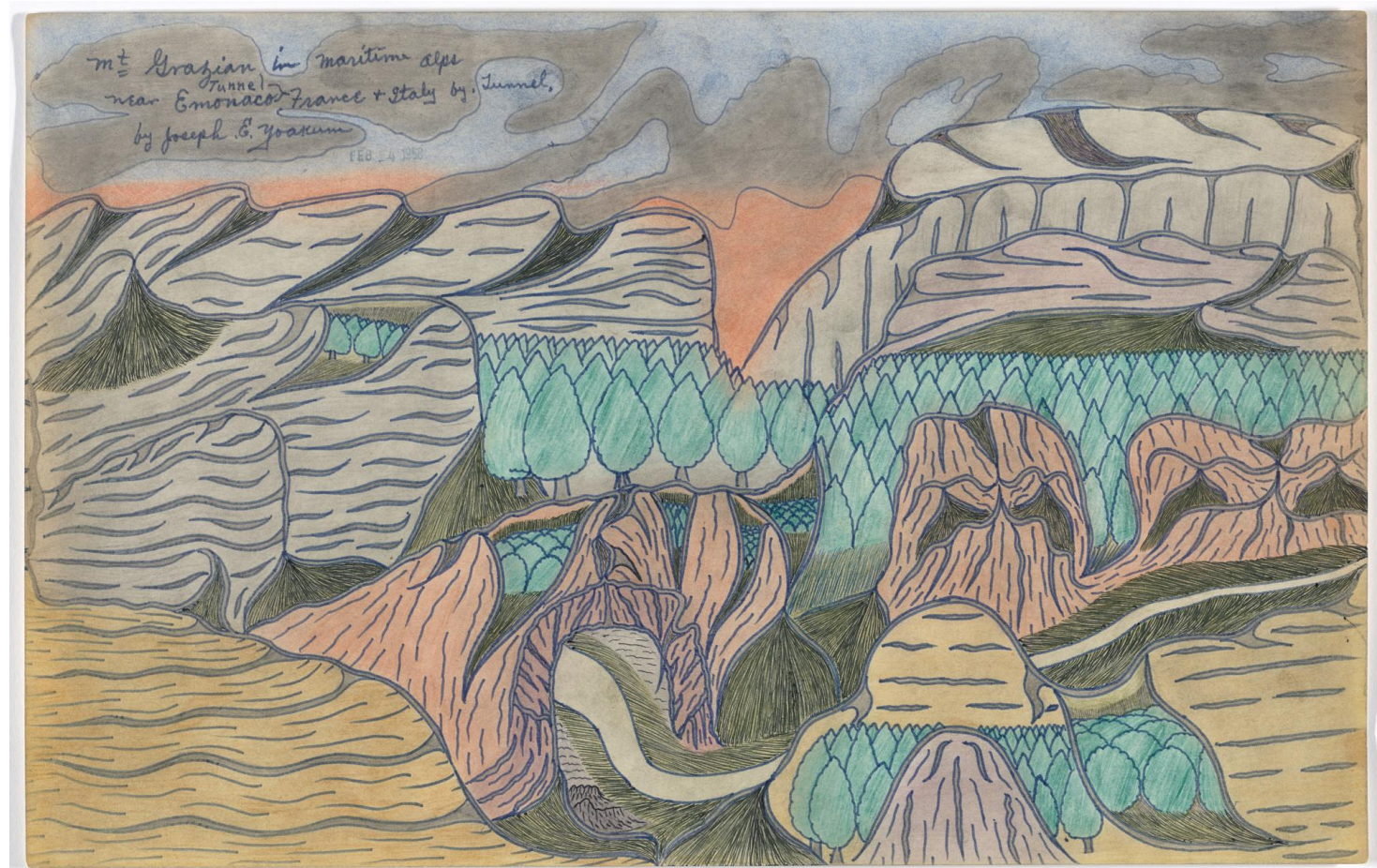


Mondays with MoMA



Step 1 Look closely

To get a closer look, visit this website, <https://mo.ma/3kcQsn>, and then click on the image for a larger view.

Questions

1. What features do you notice in this landscape?
2. What kinds of lines and colors does the artist use?
3. What kind of place do you think it is representing? Does this remind you of any place you have seen?
4. How do you think it would feel to be in this landscape?

Step 2 Learn more

When Joseph Yoakum was 71 he had a dream that inspired him to begin drawing. As a younger man, Yoakum had traveled around the United States and the world with a circus and as a soldier in the Army during World War I. His drawings represent his spiritual beliefs as well as his memories of different places he saw during this time.

This drawing is titled *Mt Grazian in Maritime Alps near Emonaco Tunnel France and Italy by Tunnel*. Many of his drawings are named after real places, contain real and imagined elements, and are almost always empty of people. "Wherever my mind led me, I would go," he said. "I've been all over this world four times."

Step 3 Activity: Remembered landscapes

Materials: pencil, paper, colored pencils or markers (*optional*)

1. Think of a place with a lot of nature that you have visited.
 - a. What did that place look like?
 - b. What are some memorable features of that place (for example: mountains, trees, rocks, water, etc.)?
 - c. How did that place make you feel?
2. Draw a landscape of this place from memory. Try not to worry about capturing exactly what the place looks like or if the landscape features are arranged realistically. You can also focus on how you felt when you were in that place.
3. *Optional:* Add color with colored pencils or markers.

Step 4 Share!

Share your artwork with a friend or classmate and tell them about this remembered place. Or you can email it to us at MoMA: schoolprograms@moma.org.



Volkswagen of America is proud to be MoMA's lead partner of education.

Generous support for School and Teacher Programs is provided by the Carroll and Milton Petrie Education Program Endowment, the William Randolph Hearst Endowment Fund, and the Mimi and Peter Haas Endowment Fund for Elementary School Programs.

Additional funding is provided by the Ducommun and Gross Family Foundation and by the Annual Education Fund.

Image: Joseph E. Yoakum. *Mt Grazian in Maritime Alps near Emonaco Tunnel France and Italy by Tunnel*. stamped 1958. Black ballpoint pen, blue felt-tip pen, and colored pencil on paper. Gift of the Raymond K. Yoshida Living Trust and Kohler Foundation, Inc.