

Family Activity Guide

CENTURY OF THE CHILD

Growing by Design 1900–2000

This exhibition explores toys, games, playgrounds, buildings, and more—all made for kids.

FIND “Maxi” set, including Tripp Trapp chair, by Peter Opsvik.

Opsvik created this oversized furniture so adults can feel what it's like to sit in a chair that is too big. He designed the original Z-shaped Tripp Trapp chair for his son; it can be adjusted as a child grows bigger.

TRY IT OUT

Sit down across from the grown-up you came with. Now switch seats. How is the Tripp Trapp chair different from the regular chair?

1



Use this guide
to explore the
exhibition and
create your own
designs!

Are there other objects you would like to make bigger, so adults could experience what it's like to be a kid? What objects would you choose?

LIST THEM HERE:

1. _____
2. _____
3. _____

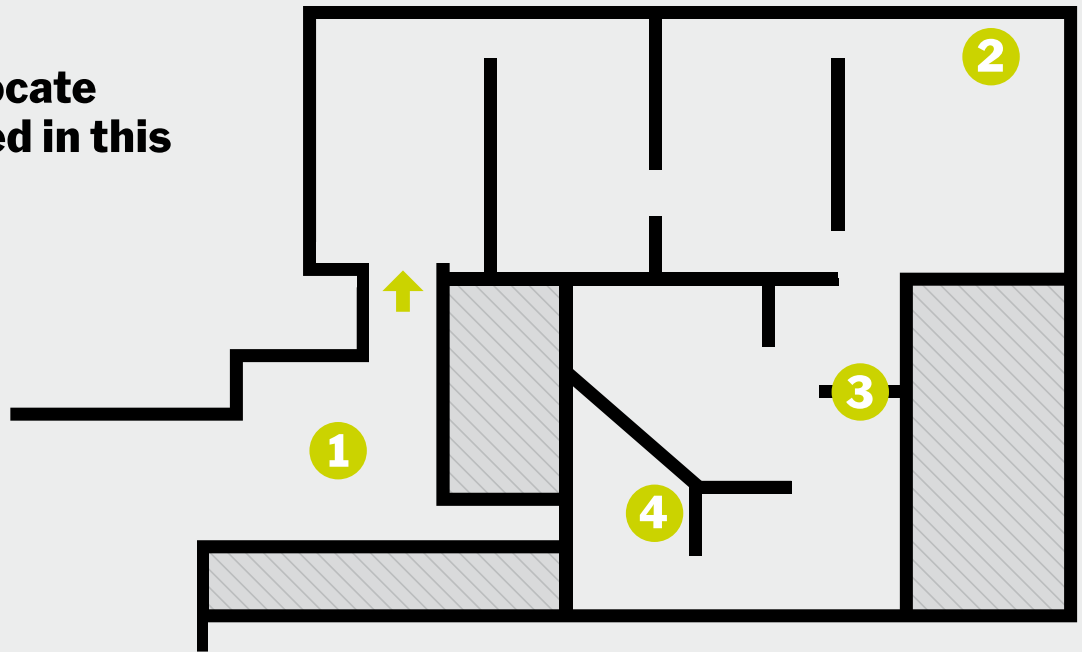
Need a pencil?
Ask at an information desk.

MOMA
KIDS

AGES
7+

6TH FLOOR

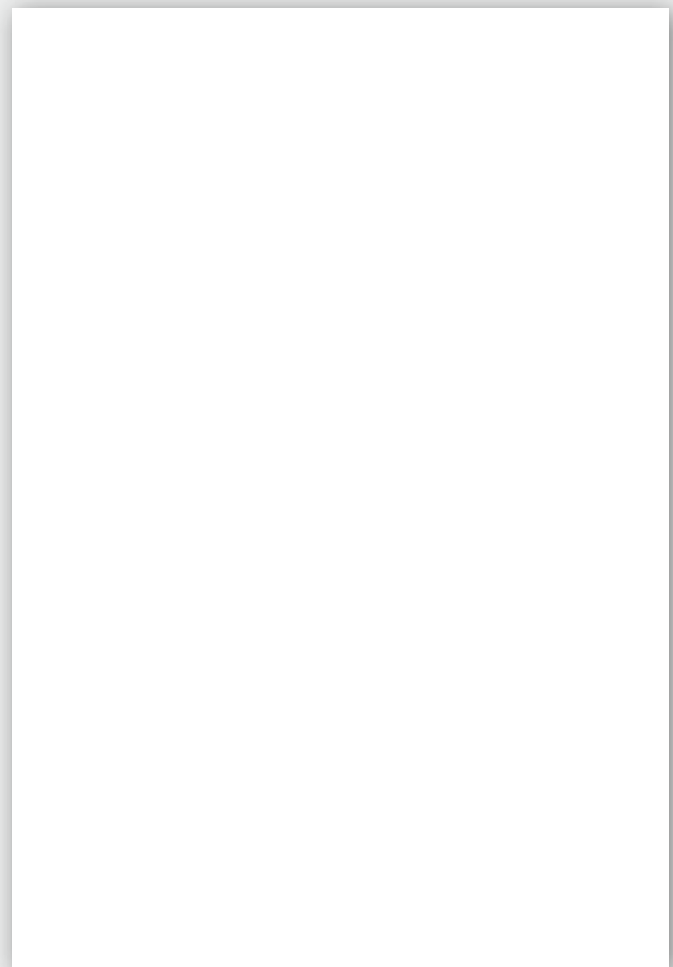
Use this map to locate the works featured in this activity guide.



FIND *We Want Peace*.

Register, Vote, by Ben Shahn.

Shahn drew this poster from the point of view of an adult who is listening to a boy's pleas for peace. The artist wanted to remind adults that peace is good for children and that it can be achieved, in part, through voting.



YOUR TURN

Think about a problem for children today. How would you design a poster to call attention to the problem? Draw your poster above.



3

FIND Omnibot 2000, remote-controlled robot.

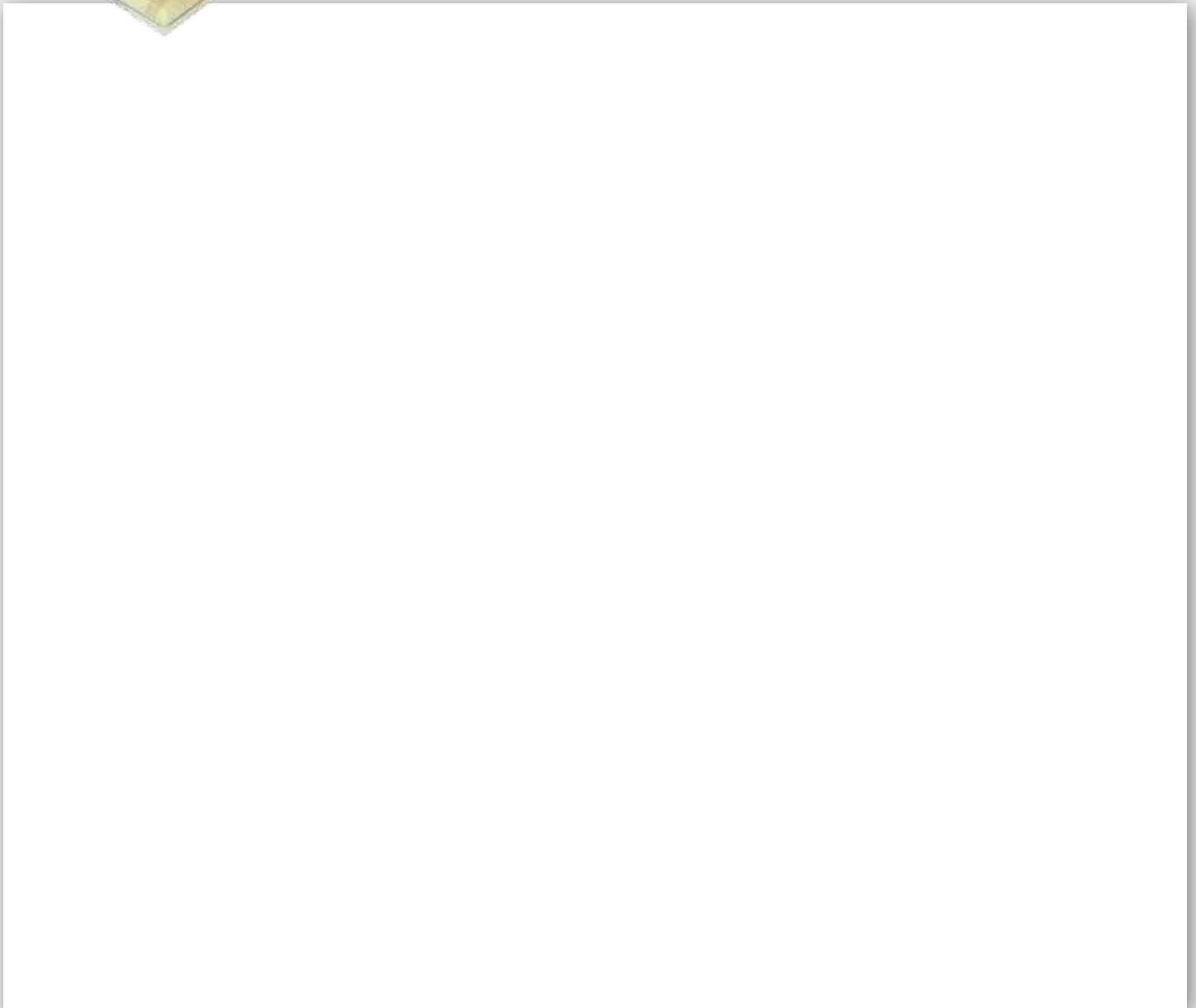
This remote-controlled robot was designed as a toy for children—but adults played with it too! It can record voices, pick up objects, and hold a tray to transport food and drinks.

TURN & TALK

If you could design a robot, what would it be able to do? What would your grown-up want it to do?

YOUR TURN

Draw a robot that you and your grown-up would like to share.



4



FIND Geopark, Stavanger, Norway, by Helen + Hard AS.

This playground in Norway is made up of materials once used in the city's oil industry. Kids participated in the design process; they helped to transform orange buoys, salvaged pipelines, and recycled drilling platforms into bike ramps and spaces for running, climbing, and jumping.

THINK ABOUT your favorite playground. What do you do there?

YOUR TURN

Design a playground for your neighborhood out of recycled objects. What materials would you use? Why? Draw your design below.

+ KEEP EXPLORING

For related programs and workshops, visit **MoMA Studio: Common Senses** (noon to 4 p.m., September 24 to November 19; closed Tuesdays), located across The Abby Aldrich Rockefeller Sculpture Garden on the mezzanine level of The Lewis B. and Dorothy Cullman Education and Research Building. For more information, please visit MoMA.org/momastudio.



Family Programs are made possible by an endowment established by the William Randolph Hearst Foundation. Additional support is provided by The Contemporary Arts Council of The Museum of Modern Art, FX de Mallmann and Natasha Elkon, and Christina R. Davis.

MoMA Studio: Common Senses is made possible by a partnership with Volkswagen of America. Additional support is provided by The Contemporary Arts Council of The Museum of Modern Art.

To make a gift in support of Education Programs at The Museum of Modern Art, please call the Development Office at (212) 708-9536 or e-mail supportededucation@MoMA.org.

For information on Family Programs at MoMA, please visit MoMA.org/family.

To be informed of program news, sign up for Family Programs E-News, at MoMA.org/enews.

THE MUSEUM OF MODERN ART 11 West 53 Street, New York, NY 10019

Peter Opsvik (Norwegian, born 1939). "Maxi" set, including Tripp Trapp chair. 1972. Lacquered beech wood, 61 x 36 1/4 x 39 1/4" (154.9 x 92.1 x 99.7 cm). Photograph of Lars Hjelle and Kjell Heggdal by Dag Lausund Stokke; Ben Shahn (American, born Lithuania. 1898–1969). *We Want Peace. Register, Vote.* 1946. Lithograph, 41 1/4 x 27" (104.8 x 68.6 cm). The Museum of Modern Art, New York. Gift of S. S. Spivack; Omnibot 2000, remote-controlled robot. c. 1985. Various materials, 24 x 15 x 14" (61 x 38.1 x 35.6 cm). Manufactured by Tomy (formerly Tomiyama), Katsushika, Tokyo. Space Age Museum/Kleeman Family Collection, Litchfield, Connecticut; Helen + Hard AS (Norway, est. 1996). (Siv Helene Stangeland [Norwegian, born 1966] and Reinhard Kropf [Austrian, born 1967]). Geopark, Stavanger, Norway. 2011. Photograph by Emile Ashley. Courtesy the architects