

CONDITIONS OF USE FOR THIS PDF

The images contained within this PDF may be used for private study, scholarship, and research only. They may not be published in print, posted on the internet, or exhibited. They may not be donated, sold, or otherwise transferred to another individual or repository without the written permission of The Museum of Modern Art Archives.

When publication is intended, publication-quality images must be obtained from SCALA Group, the Museum's agent for licensing and distribution of images to outside publishers and researchers.

If you wish to quote any of this material in a publication, an application for permission to publish must be submitted to the MoMA Archives. This stipulation also applies to dissertations and theses. All references to materials should cite the archival collection and folder, and acknowledge "The Museum of Modern Art Archives, New York."

Whether publishing an image or quoting text, you are responsible for obtaining any consents or permissions which may be necessary in connection with any use of the archival materials, including, without limitation, any necessary authorizations from the copyright holder thereof or from any individual depicted therein.

In requesting and accepting this reproduction, you are agreeing to indemnify and hold harmless The Museum of Modern Art, its agents and employees against all claims, demands, costs and expenses incurred by copyright infringement or any other legal or regulatory cause of action arising from the use of this material.

NOTICE: WARNING CONCERNING COPYRIGHT RESTRICTIONS

The copyright law of the United States (Title 17, United States Code) governs the making of photocopies or other reproductions of copyrighted material. Under certain conditions specified in the law, libraries and archives are authorized to furnish a photocopy or other reproduction. One of these specified conditions is that the photocopy or reproduction is not to be "used for any purpose other than private study, scholarship, or research." If a user makes a request for, or later uses, a photocopy or reproduction for purposes in excess of "fair use," that user may be liable for copyright infringement.

FOR STUDY PURPOSES ONLY. NOT FOR REPRODUCTION.

The Museum of Modern Art Archives, NY	Collection:	Series.Folder:
	WSL	V.16.c.i



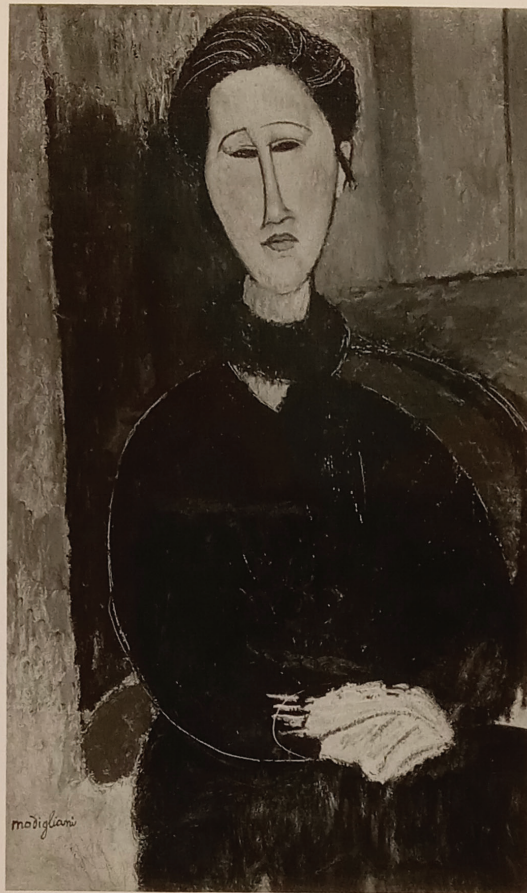
FOR STUDY PURPOSES ONLY. NOT FOR REPRODUCTION.

The Museum of Modern Art Archives, NY	Collection:	Series.Folder:
	WSL	V.16.c.i

PHOTO Marc VAUX
114 bis, Rue de Vaugirard
PARIS-VI^e - Tél. ANTO 90-01

FOR STUDY PURPOSES ONLY. NOT FOR REPRODUCTION.

The Museum of Modern Art Archives, NY	Collection:	Series.Folder:
	WSL	V.16.c.i



FOR STUDY PURPOSES ONLY. NOT FOR REPRODUCTION.

The Museum of Modern Art Archives, NY	Collection:	Series.Folder:
	WSL	V.16.c.i

Mme Z argent & bleues

32 1/2 x 19 1/2

Black dress - unfinished

Pouss

FOR STUDY PURPOSES ONLY. NOT FOR REPRODUCTION.

The Museum of Modern Art Archives, NY	Collection:	Series.Folder:
	WSL	V.16.c.i



FOR STUDY PURPOSES ONLY. NOT FOR REPRODUCTION.

The Museum of Modern Art Archives, NY	Collection:	Series.Folder:
	WSL	V.16.c.i

La Fille aux yeux gris

18 x 24

A. Modigliani

By Emil
662 Lexington Ave
New York, N.Y.

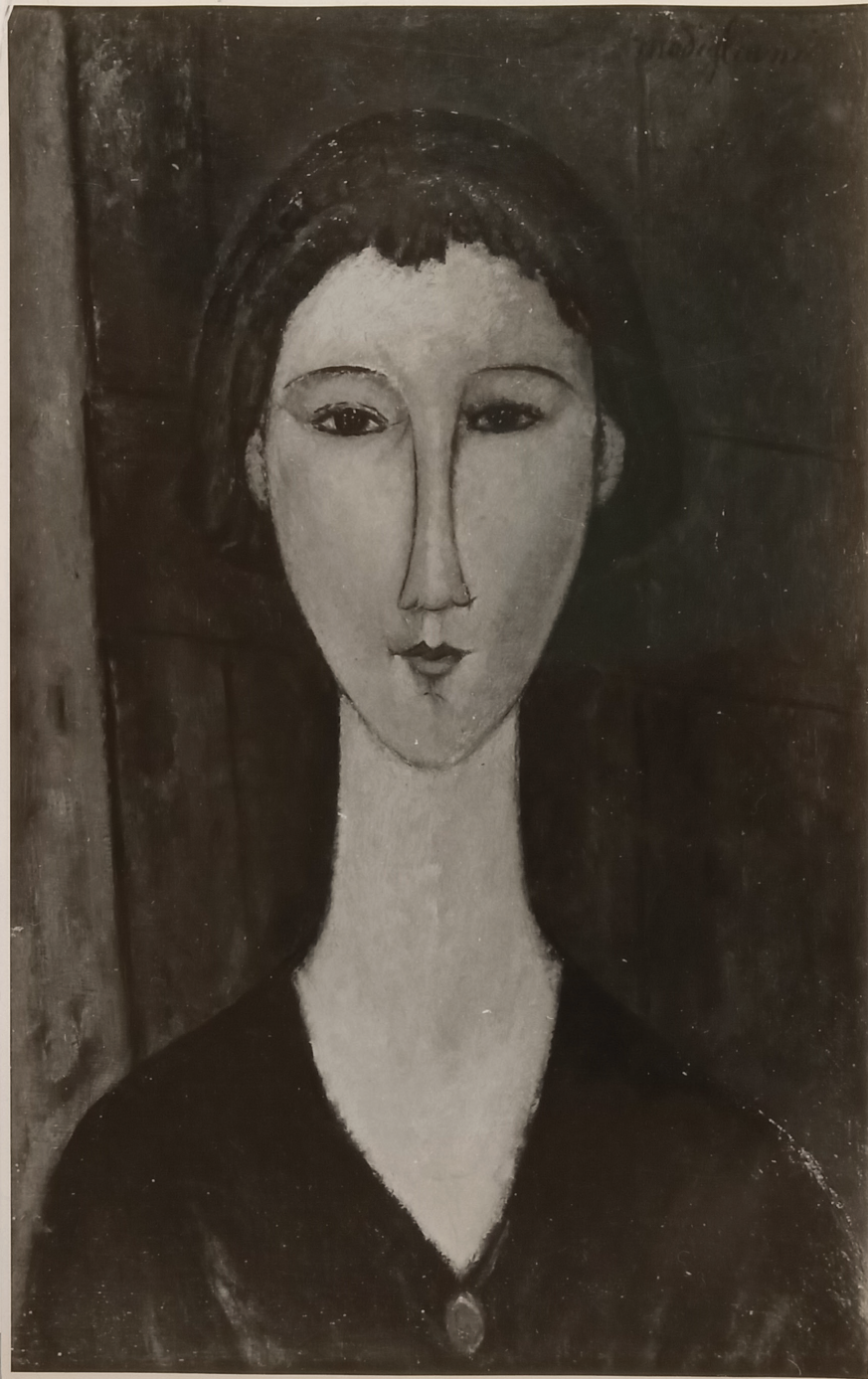
FOR STUDY PURPOSES ONLY. NOT FOR REPRODUCTION.

The Museum of Modern Art Archives, NY	Collection:	Series.Folder:
	WSL	V.16.c.i



FOR STUDY PURPOSES ONLY. NOT FOR REPRODUCTION.

The Museum of Modern Art Archives, NY	Collection:	Series.Folder:
	W S L	V.16.c.i



FOR STUDY PURPOSES ONLY. NOT FOR REPRODUCTION.

The Museum of Modern Art Archives, NY	Collection:	Series.Folder:
	WSL	V.16.c.i

24 X 15 1/2"

"Head of Girl"
by
Modigliani

James Tyrone Galleries
160 Bronwood Ave.
Westwood Hills,
Los Angeles, Calif.

Photograph Courtesy Dalzell Hatfield Galleries
Los Angeles

FOR STUDY PURPOSES ONLY. NOT FOR REPRODUCTION.

The Museum of Modern Art Archives, NY	Collection:	Series.Folder:
	WSL	V.16.c.i



FOR STUDY PURPOSES ONLY. NOT FOR REPRODUCTION.

The Museum of Modern Art Archives, NY	Collection:	Series.Folder:
	WSL	V.16.c.i

Modigliani "jeune Femme"
Exposition "Cent Portraits
de Femmes"
Février 1950.

GALERIE CHARPENTIER
78, F^o S^o Honoré 78
PARIS-8^e

MENTION OBLIGATOIRE

enfants
100
Muses

FOR STUDY PURPOSES ONLY. NOT FOR REPRODUCTION.

The Museum of Modern Art Archives, NY	Collection:	Series.Folder:
	WSL	V.16.c.i



Portrait (1917)

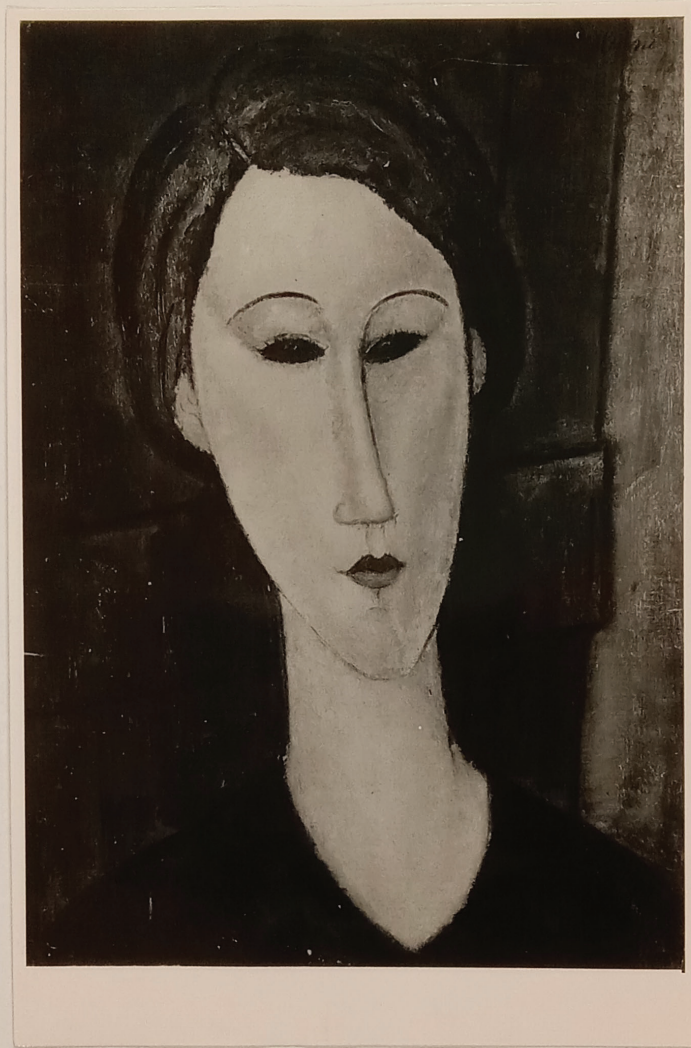
FOR STUDY PURPOSES ONLY. NOT FOR REPRODUCTION.

The Museum of Modern Art Archives, NY	Collection:	Series.Folder:
	WSL	V.16.c.i

Giovinetta dal cammeo (1917)
Jeune fille au camée
Young lady with cameo
Mädchen mit Kamee

FOR STUDY PURPOSES ONLY. NOT FOR REPRODUCTION.

The Museum of Modern Art Archives, NY	Collection:	Series.Folder:
	WSL	V.16.c.i



FOR STUDY PURPOSES ONLY. NOT FOR REPRODUCTION.

The Museum of Modern Art Archives, NY	Collection:	Series.Folder:
	WSL	V.16.c.i

118 x 13

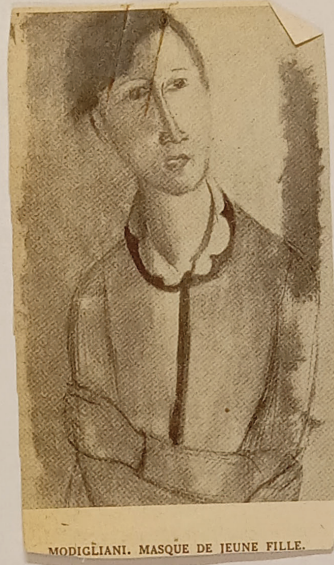
Black dress

n° 2680

PHOTO
CAUVIN
16, Rue du Bac, PARIS 7^e
Litré 60-41

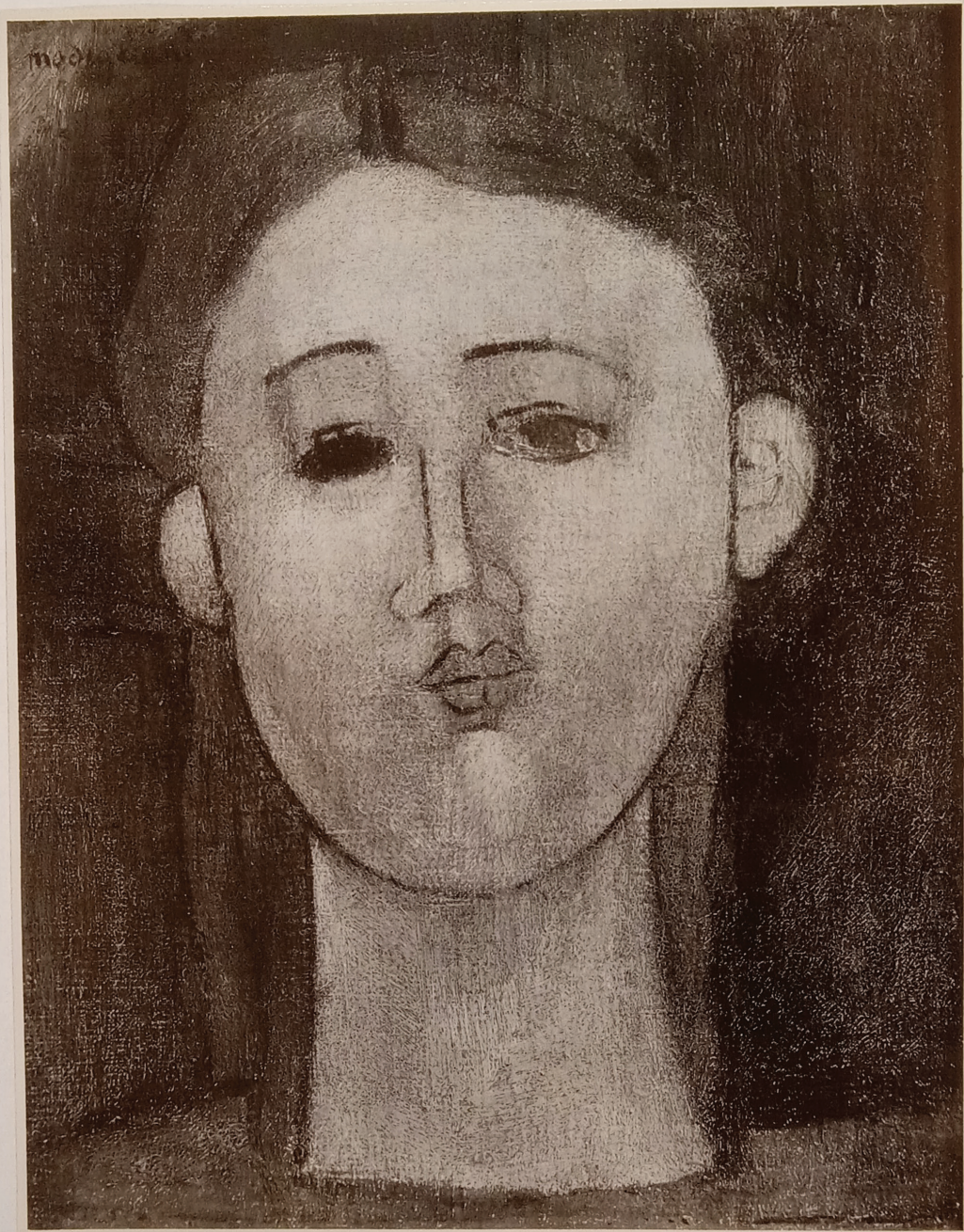
FOR STUDY PURPOSES ONLY. NOT FOR REPRODUCTION.

The Museum of Modern Art Archives, NY	Collection:	Series.Folder:
	WSL	V.16.c.i



FOR STUDY PURPOSES ONLY. NOT FOR REPRODUCTION.

The Museum of Modern Art Archives, NY	Collection:	Series.Folder:
	WSL	V.16.c.i



FOR STUDY PURPOSES ONLY. NOT FOR REPRODUCTION.

The Museum of Modern Art Archives, NY	Collection:	Series.Folder:
	WSL	V.16.c.i

Artist Amedeo Modigliani P 1608
Subject Tête de Jeune Fille (1916) # 5328
Medium oil
Size 13 x 10 1/4

PERLS GALLERIES

32 EAST 58TH STREET

NEW YORK, N. Y.

1608

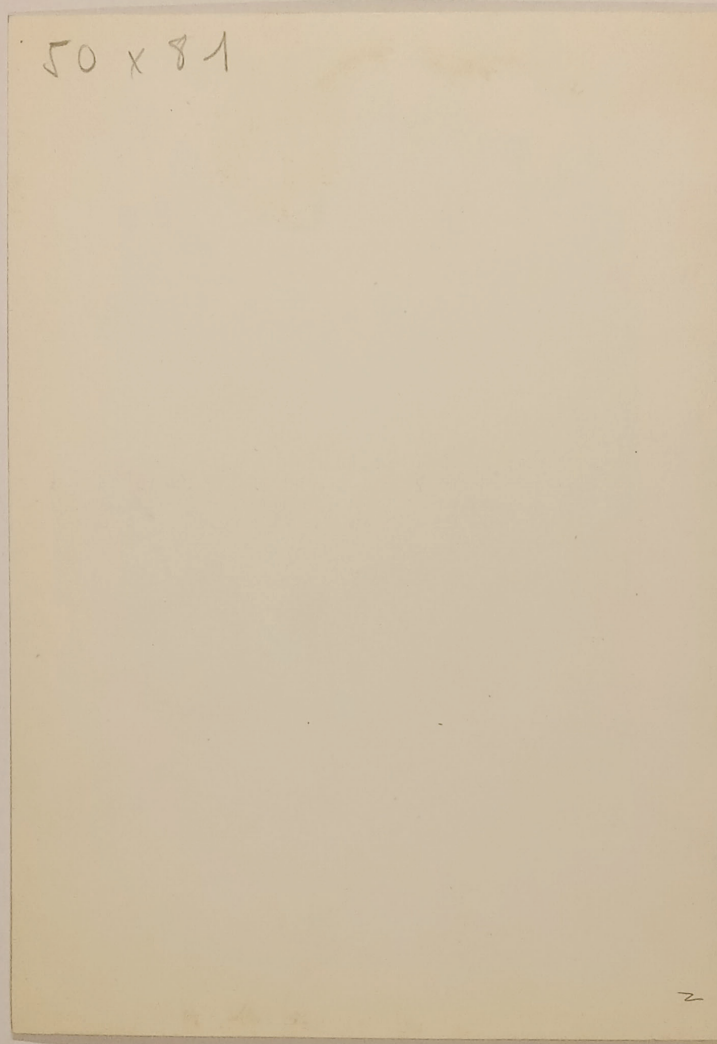
FOR STUDY PURPOSES ONLY. NOT FOR REPRODUCTION.

The Museum of Modern Art Archives, NY	Collection:	Series.Folder:
	WSL	V.16.c.i



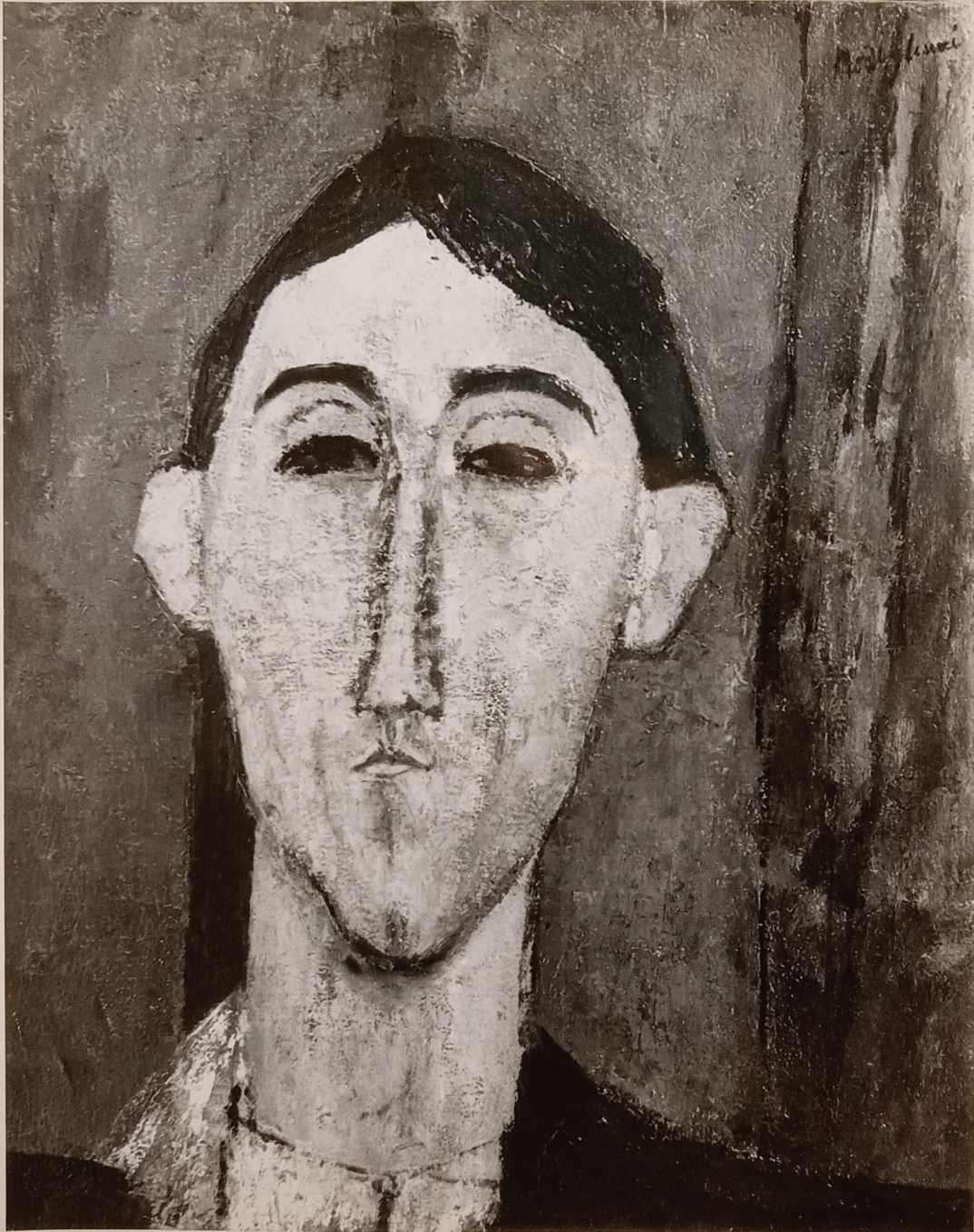
FOR STUDY PURPOSES ONLY. NOT FOR REPRODUCTION.

The Museum of Modern Art Archives, NY	Collection:	Series.Folder:
	WSL	V.16.c.i



FOR STUDY PURPOSES ONLY. NOT FOR REPRODUCTION.

The Museum of Modern Art Archives, NY	Collection:	Series.Folder:
	WSL	V.16.c.i



FOR STUDY PURPOSES ONLY. NOT FOR REPRODUCTION.

The Museum of Modern Art Archives, NY	Collection:	Series.Folder:
	WSL	V.16.c.i

Maidenform Brassiere

Head of a Spanish Painter

2411-3

GOLTEN PHOTOS NEW YORK
★ 2411 3
Plaza 3-0566

FOR STUDY PURPOSES ONLY. NOT FOR REPRODUCTION.

The Museum of Modern Art Archives, NY	Collection:	Series.Folder:
	WSL	V.16.c.i



29090. Paris. C^m E.F. Modigliani - Portrait - Reprod. interd. - Photo Giraudon (1929)

FOR STUDY PURPOSES ONLY. NOT FOR REPRODUCTION.

The Museum of Modern Art Archives, NY	Collection:	Series.Folder:
	W S L	V.16.c.i



FOR STUDY PURPOSES ONLY. NOT FOR REPRODUCTION.

The Museum of Modern Art Archives, NY	Collection:	Series.Folder:
	WSL	V.16.c.i



FOR STUDY PURPOSES ONLY. NOT FOR REPRODUCTION.

The Museum of Modern Art Archives, NY	Collection:	Series.Folder:
	WSL	V.16.c.i

Modigliani

Portrait de femme au corsage bleu

BK P 101 d 28

École italienne

Coll. " M^{me} Paul Guillaume

FOR STUDY PURPOSES ONLY. NOT FOR REPRODUCTION.

The Museum of Modern Art Archives, NY	Collection:	Series.Folder:
	WSL	V.16.c.i



FOR STUDY PURPOSES ONLY. NOT FOR REPRODUCTION.

The Museum of Modern Art Archives, NY	Collection:	Series.Folder:
	WSL	V.16.c.i

La France

Stodigiani

1917 (P.6)

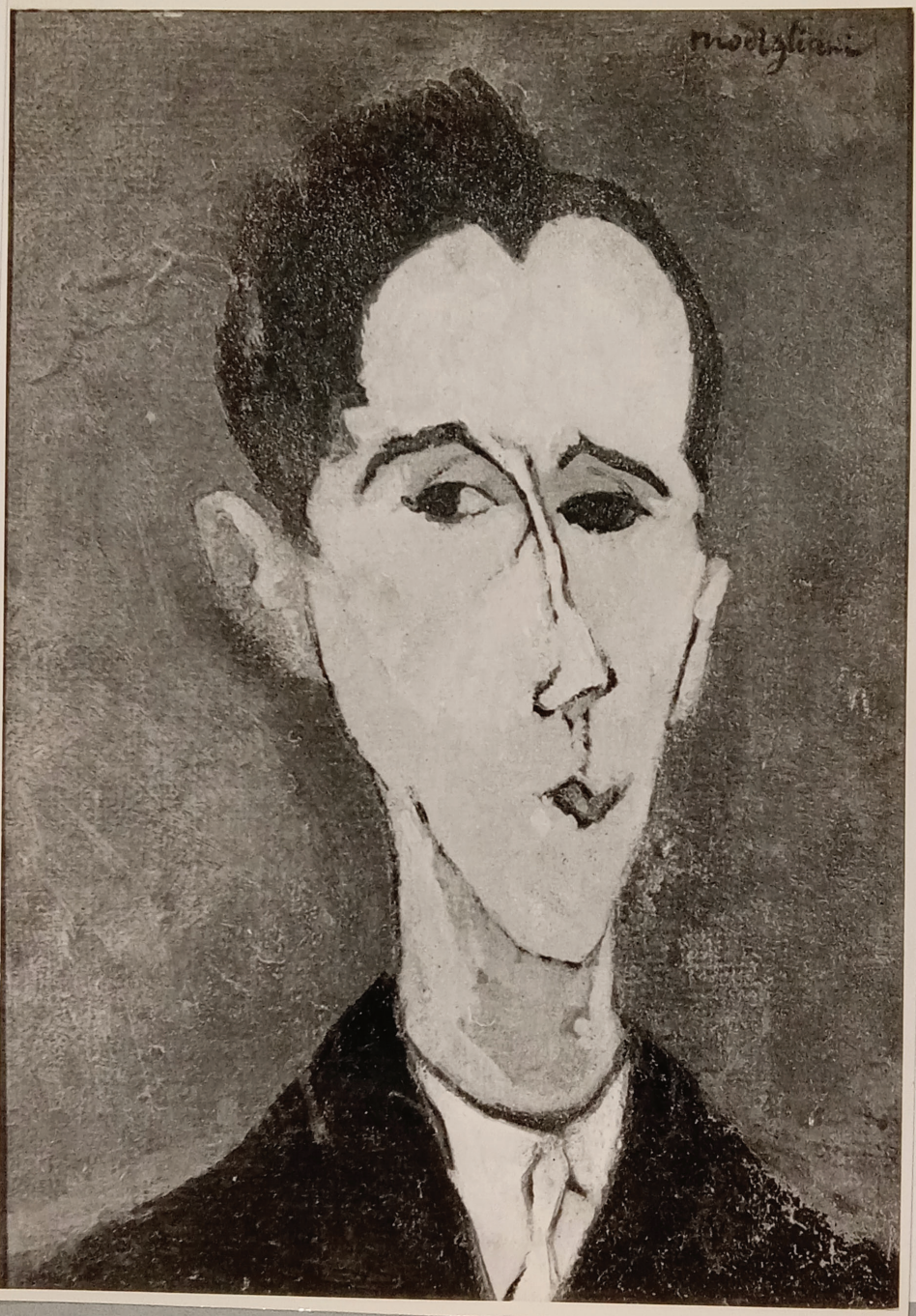
Basta 29

Femme au frottois chapeau
Ecole Stabemina

BAP 11026

FOR STUDY PURPOSES ONLY. NOT FOR REPRODUCTION.

The Museum of Modern Art Archives, NY	Collection:	Series.Folder:
	WSL	V.16.c.i



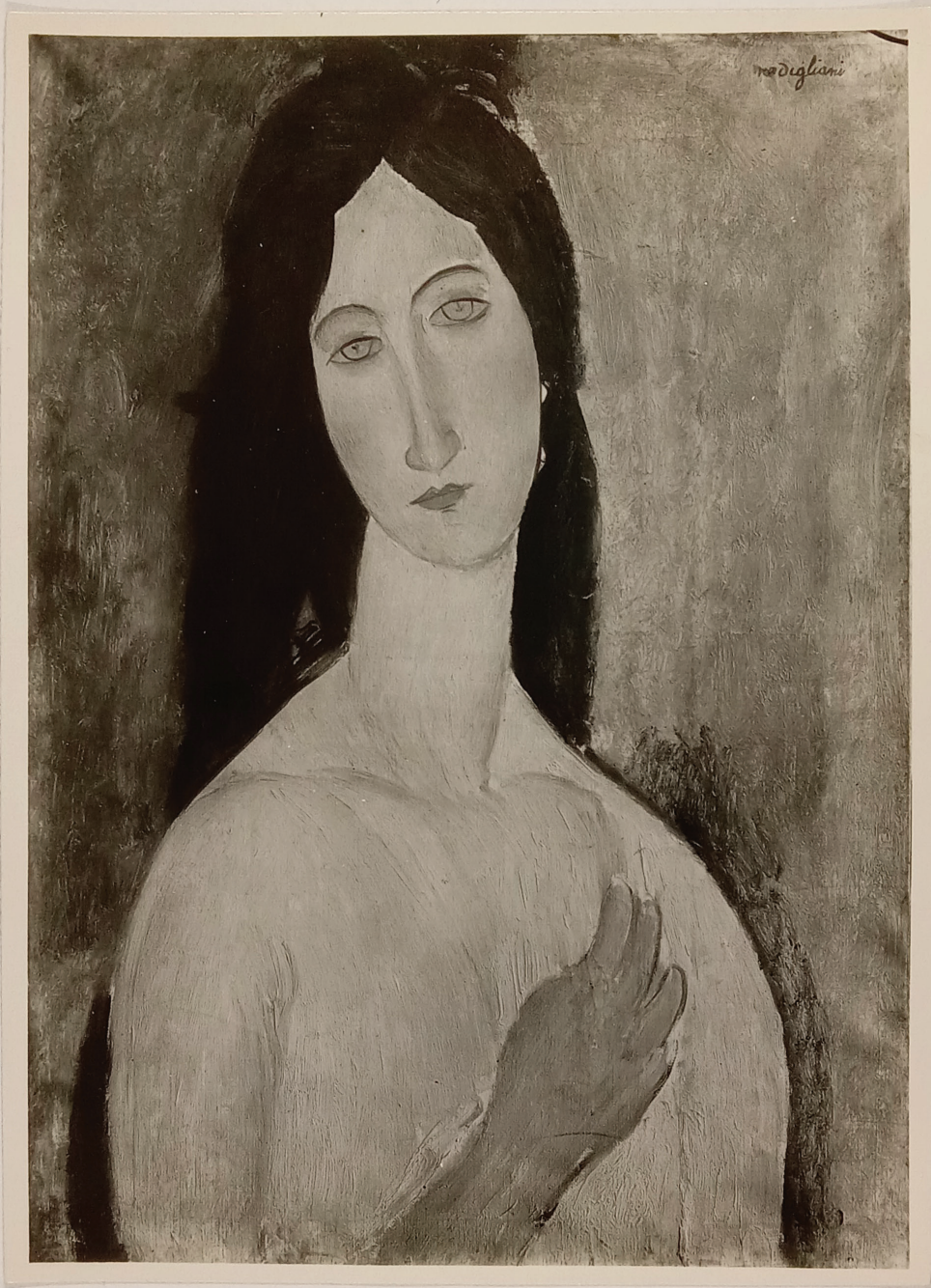
FOR STUDY PURPOSES ONLY. NOT FOR REPRODUCTION.

The Museum of Modern Art Archives, NY	Collection:	Series.Folder:
	WSL	V.16.c.i

1/2 x 12 1/2 in

FOR STUDY PURPOSES ONLY. NOT FOR REPRODUCTION.

The Museum of Modern Art Archives, NY	Collection:	Series.Folder:
	WSL	V.16.c.i



FOR STUDY PURPOSES ONLY. NOT FOR REPRODUCTION.

The Museum of Modern Art Archives, NY	Collection:	Series.Folder:
	W S L	V.16.c.i

PHOTO Marc VAUX
114 bis, Rue de Vaugirard
PARIS-VI^e - Tél. ANJOU 80-01

FOR STUDY PURPOSES ONLY. NOT FOR REPRODUCTION.

The Museum of Modern Art Archives, NY	Collection:	Series.Folder:
	WSL	V.16.c.i



FOR STUDY PURPOSES ONLY. NOT FOR REPRODUCTION.

The Museum of Modern Art Archives, NY	Collection:	Series.Folder:
	WSL	V.16.c.i

P1065
#4756

Artist Amedeo Modigliani

Subject Portrait de Mme Zborowska

Medium pencil

Size 12 1/8 x 9 1/4"

PERLS GALLERIES

32 EAST 58TH STREET

NEW YORK, N. Y.

1065

FOR STUDY PURPOSES ONLY. NOT FOR REPRODUCTION.

The Museum of Modern Art Archives, NY	Collection:	Series.Folder:
	W S L	V.16.c.i



FOR STUDY PURPOSES ONLY. NOT FOR REPRODUCTION.

The Museum of Modern Art Archives, NY	Collection:	Series.Folder:
	WSL	V.16.c.i

PHOTO
CAUVIN
46, Rue du Bac, PARIS-7^e
Litré 60-41