

CONDITIONS OF USE FOR THIS PDF

The images contained within this PDF may be used for private study, scholarship, and research only. They may not be published in print, posted on the internet, or exhibited. They may not be donated, sold, or otherwise transferred to another individual or repository without the written permission of The Museum of Modern Art Archives.

When publication is intended, publication-quality images must be obtained from SCALA Group, the Museum's agent for licensing and distribution of images to outside publishers and researchers.

If you wish to quote any of this material in a publication, an application for permission to publish must be submitted to the MoMA Archives. This stipulation also applies to dissertations and theses. All references to materials should cite the archival collection and folder, and acknowledge "The Museum of Modern Art Archives, New York."

Whether publishing an image or quoting text, you are responsible for obtaining any consents or permissions which may be necessary in connection with any use of the archival materials, including, without limitation, any necessary authorizations from the copyright holder thereof or from any individual depicted therein.

In requesting and accepting this reproduction, you are agreeing to indemnify and hold harmless The Museum of Modern Art, its agents and employees against all claims, demands, costs and expenses incurred by copyright infringement or any other legal or regulatory cause of action arising from the use of this material.

NOTICE: WARNING CONCERNING COPYRIGHT RESTRICTIONS

The copyright law of the United States (Title 17, United States Code) governs the making of photocopies or other reproductions of copyrighted material. Under certain conditions specified in the law, libraries and archives are authorized to furnish a photocopy or other reproduction. One of these specified conditions is that the photocopy or reproduction is not to be "used for any purpose other than private study, scholarship, or research." If a user makes a request for, or later uses, a photocopy or reproduction for purposes in excess of "fair use," that user may be liable for copyright infringement.

FOR STUDY PURPOSES ONLY. NOT FOR REPRODUCTION.

| | | |
|---------------------------------------|-------------|----------------|
| The Museum of Modern Art Archives, NY | Collection: | Series.Folder: |
| | Valentin | VIII.C.97 |



A GIFT TO THE
PHOTO ARCHIVE
FROM CURT
VALENTIN
MUSEUM OF MODERN ART
LIBRARY

KLEE, PAUL
OISEAU POP - 1925
Coll. ~~Bürli~~, Bern.
BURGI

FOR STUDY PURPOSES ONLY. NOT FOR REPRODUCTION.

| | | |
|---------------------------------------|-------------|----------------|
| The Museum of Modern Art Archives, NY | Collection: | Series.Folder: |
| | Valentin | VIII.C.97 |



A GIFT TO THE
PHOTO ARCHIVE
FROM CURT
VALENTIN
MUSEUM OF MODERN ART
LIBRARY

KLEE, PAUL
VILLAGE PRÈS DE BERNE ¹⁹¹³
Photo: Julius Sohn, Düsseldorf.
Bes. W. Vorwinckel & Köln. 1913.

FOR STUDY PURPOSES ONLY. NOT FOR REPRODUCTION.

| | | |
|---------------------------------------|-------------|----------------|
| The Museum of Modern Art Archives, NY | Collection: | Series.Folder: |
| | Valentin | VIII.C.97 |

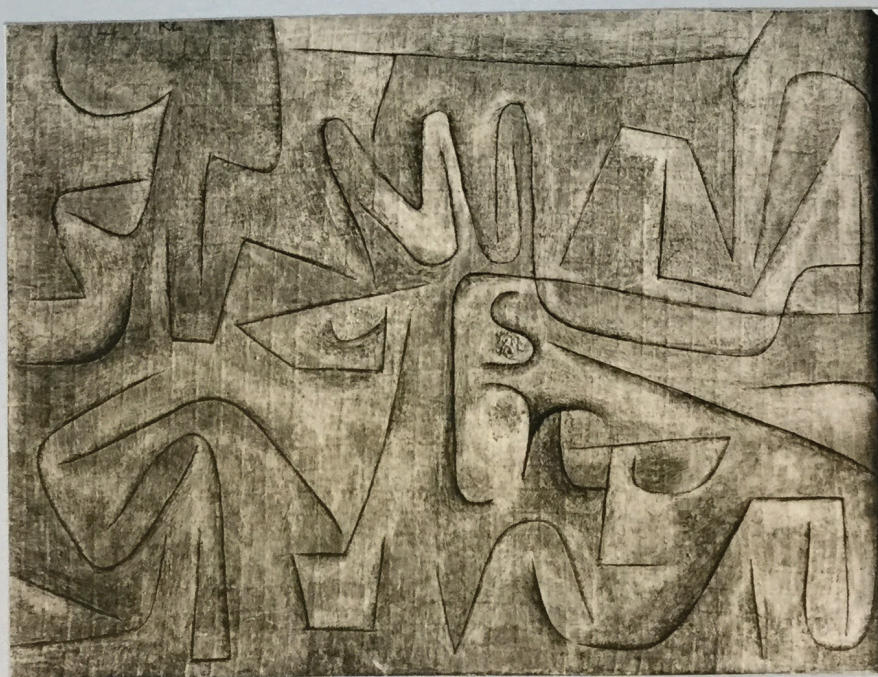
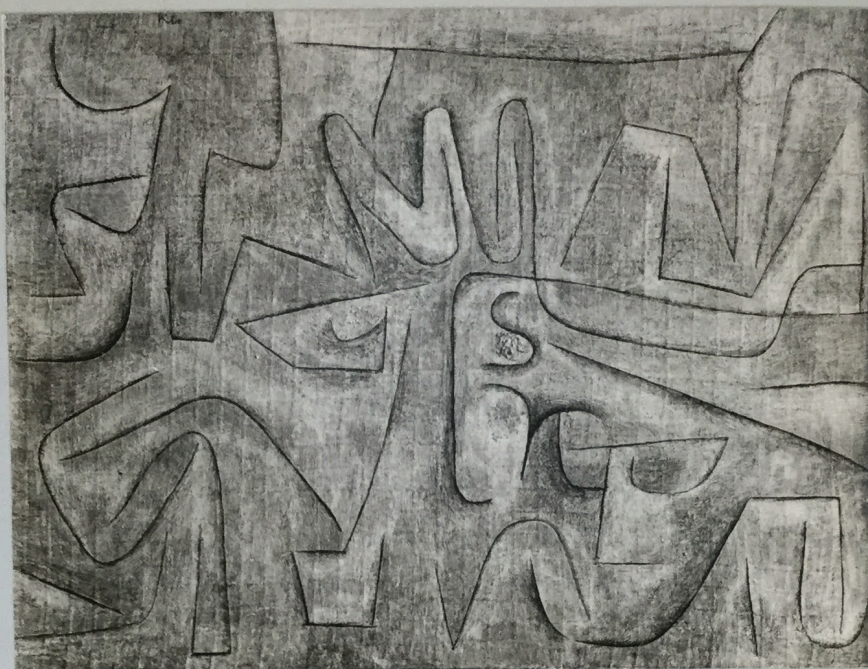


A GIFT TO THE
PHOTO ARCHIVE
FROM CURT
VALENTIN
MUSEUM OF MODERN ART
LIBRARY

KLEE, PAUL
TROIS FENÊTRES 1920 (9)
Reproduktion nir mit dem Vermerk: "Mit
Genehmigung der Galerie Flechtheim".
Coll. O. RALFS - BRUNSWICK.

FOR STUDY PURPOSES ONLY. NOT FOR REPRODUCTION.

| | | |
|---------------------------------------|-------------|----------------|
| The Museum of Modern Art Archives, NY | Collection: | Series.Folder: |
| | Valentin | VIII.C.97 |



A GIFT TO THE
PHOTO ARCHIVE
FROM CURT
VALENTIN
MUSEUM OF MODERN ART
LIBRARY

KLEEM PAUL
BLUMEN TERRASSE 1937
16510 A
Gal.Simon, 29bis Rue d'Astorg, Paris 8e.
OIL

FOR STUDY PURPOSES ONLY. NOT FOR REPRODUCTION.

| | | |
|---------------------------------------|-------------|----------------|
| The Museum of Modern Art Archives, NY | Collection: | Series.Folder: |
| | Valentin | VIII.C.97 |



A GIFT TO THE
PHOTO ARCHIVE
FROM CURT
VALENTIN
MUSEUM OF MODERN ART
LIBRARY

KLEE, PAUL
PORTRAIT D'ACTRICE - 1920
468

Coll. FLECHTHEIM. BERLIN

FOR STUDY PURPOSES ONLY. NOT FOR REPRODUCTION.

| | | |
|---------------------------------------|-------------|----------------|
| The Museum of Modern Art Archives, NY | Collection: | Series.Folder: |
| | Valentin | VIII.C.97 |



A GIFT TO THE
PHOTO ARCHIVE
FROM CURT
VALENTIN
MUSEUM OF MODERN ART
LIBRARY

KLEE, PAUL
HAUSE IM GEBIRGE 1913
Photo: Julius Sohn, Düsseldorf.

CH. FLECHTHEIM - BERLIN

FOR STUDY PURPOSES ONLY. NOT FOR REPRODUCTION.

| | | |
|---------------------------------------|-------------|----------------|
| The Museum of Modern Art Archives, NY | Collection: | Series.Folder: |
| | Valentin | VIII.C.97 |



KLEE, PAUL

1919

Photo: Julius Sohn, Düsseldorf.

FOR STUDY PURPOSES ONLY. NOT FOR REPRODUCTION.

| | | |
|---------------------------------------|-------------|----------------|
| The Museum of Modern Art Archives, NY | Collection: | Series.Folder: |
| | Valentin | VIII.C.97 |



A GIFT TO THE
PHOTO ARCHIVE
FROM CURT
VALENTIN
MUSEUM OF MODERN ART
LIBRARY

KLEE, PAUL

16503 A

Gal. Simon, 29bis Rue d'Astorg, Paris 8e.

FOR STUDY PURPOSES ONLY. NOT FOR REPRODUCTION.

| | | |
|---------------------------------------|-------------|----------------|
| The Museum of Modern Art Archives, NY | Collection: | Series.Folder: |
| | Valentin | VIII.C.97 |



A GIFT TO THE
PHOTO ARCHIVE
FROM CURT
VALENTIN
MUSEUM OF MODERN ART
LIBRARY

KLEE, PAUL
EFFLORESCENCE-
34 ; 22

FOR STUDY PURPOSES ONLY. NOT FOR REPRODUCTION.

| | | |
|---------------------------------------|-------------|----------------|
| The Museum of Modern Art Archives, NY | Collection: | Series.Folder: |
| | Valentin | VIII.C.97 |



A GIFT TO THE
PHOTO ARCHIVE
FROM CURT
VALENTIN
MUSEUM OF MODERN ART
LIBRARY

KLEE, PAUL
KATASTROPHE DER SPHYNX - 1937
16514
Gal. Simon, 29bis Rue d'Astorg, Paris
8e.
50x60 cm - OIL

FOR STUDY PURPOSES ONLY. NOT FOR REPRODUCTION.

| | | |
|---------------------------------------|-------------|----------------|
| The Museum of Modern Art Archives, NY | Collection: | Series.Folder: |
| | Valentin | VIII.C.97 |

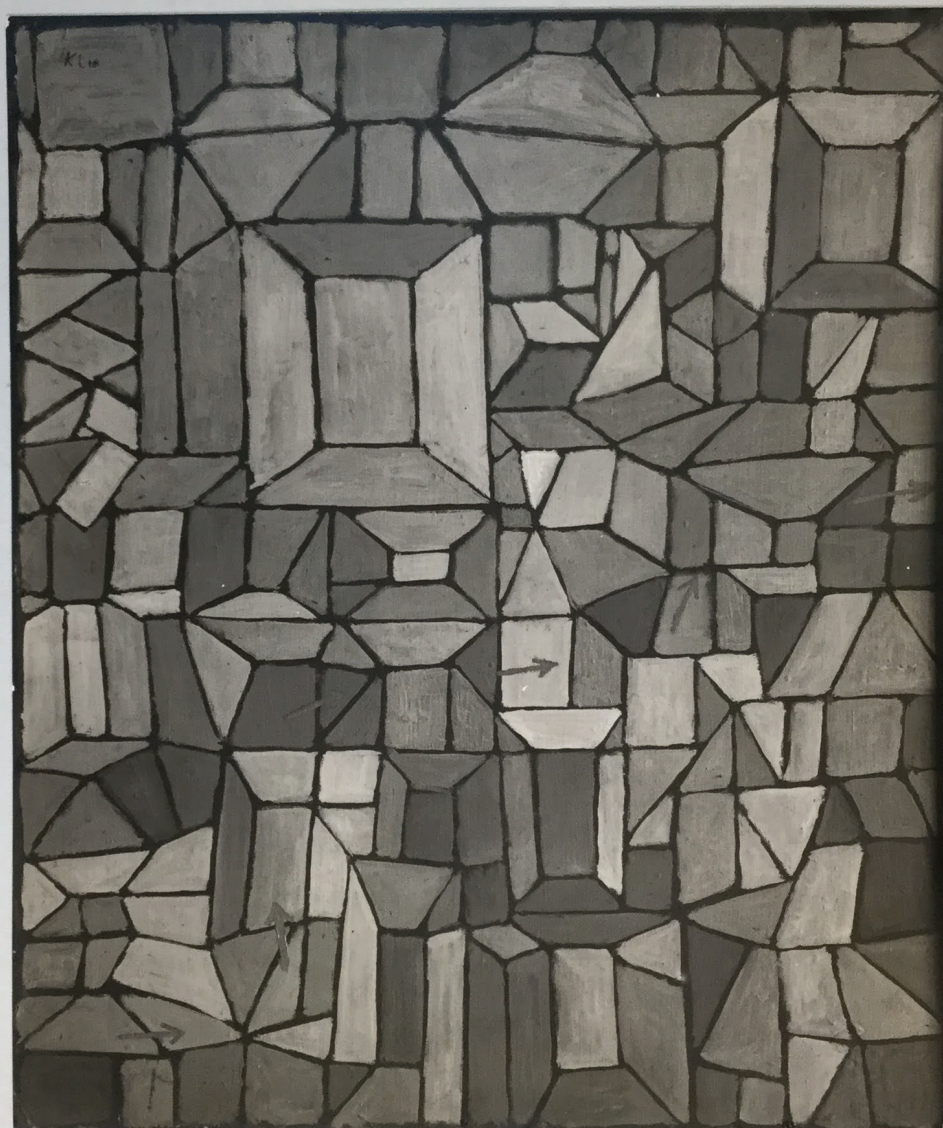


A GIFT TO THE
PHOTO ARCHIVE
FROM CURT
VALENTIN
MUSEUM OF MODERN ART
LIBRARY

1937
KLEE, PAUL
WANDER CIRCUS
16512 TRAVELING CIRCUS
Gal. Simon, 29bis Rue d'Astorg, Paris 8e.
25 5/8 x 19 5/8 oil
BALTIMORE MUSEUM OF ART

FOR STUDY PURPOSES ONLY. NOT FOR REPRODUCTION.

| | | |
|---------------------------------------|-------------|----------------|
| The Museum of Modern Art Archives, NY | Collection: | Series.Folder: |
| | Valentin | VIII.C.97 |

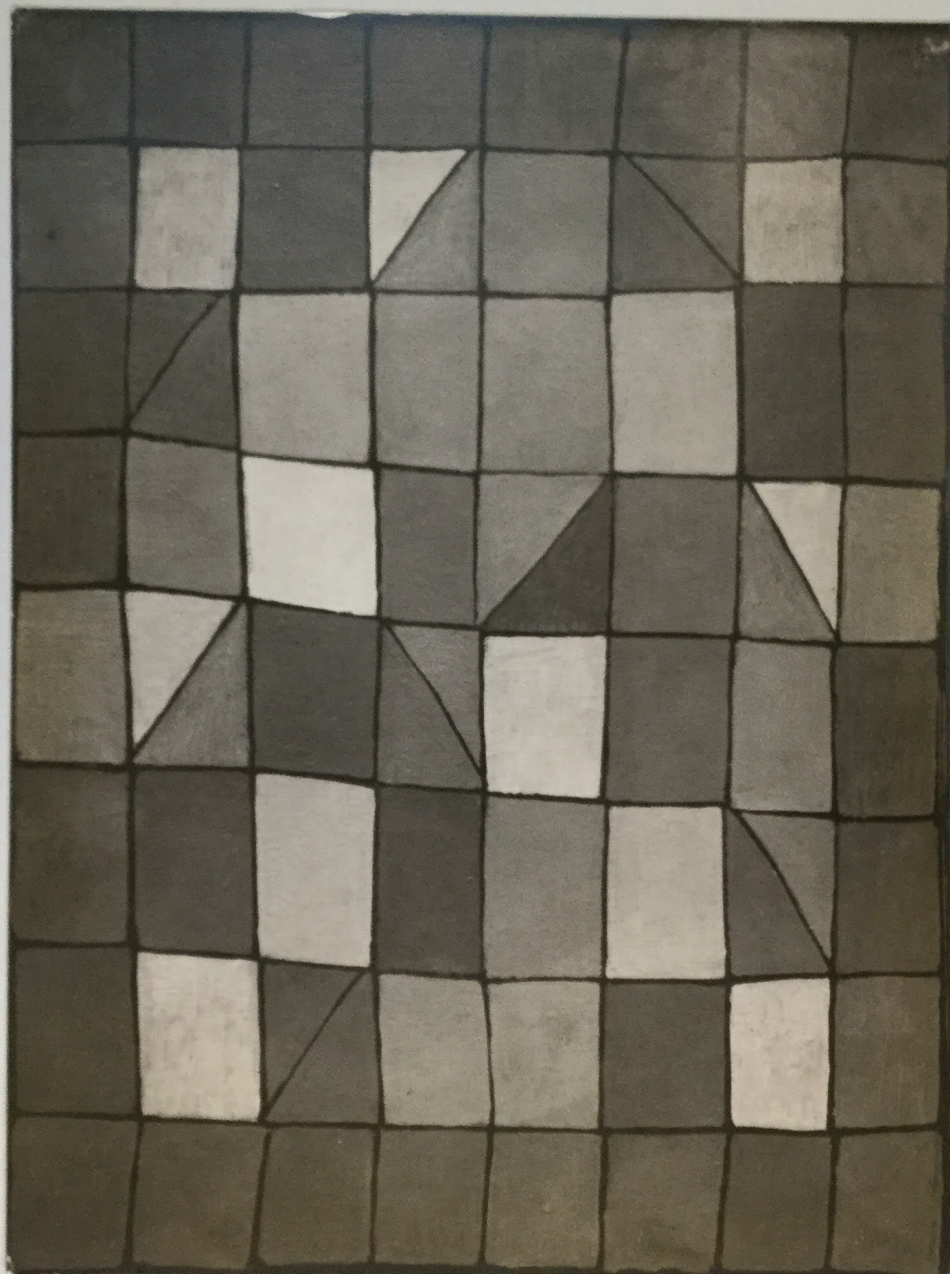


A GIFT TO THE
PHOTO ARCHIVE
FROM CURT
VALENTIN
MUSEUM OF MODERN ART
LIBRARY

KLEE, PAUL
DER WEG ZUR STADTBURG
16505 1937
Gal. Simon, 29bis Rue d'Astorg, Paris 8.
DIL

FOR STUDY PURPOSES ONLY. NOT FOR REPRODUCTION.

| | | |
|---------------------------------------|-------------|----------------|
| The Museum of Modern Art Archives, NY | Collection: | Series.Folder: |
| | Valentin | VIII.C.97 |



KLEE, PAUL
ARCHITEKTUR ABENDS- 1937
16511
Gal. Simon, 29bis Rue d'Astorg, Paris 8
D/L

FOR STUDY PURPOSES ONLY. NOT FOR REPRODUCTION.

| | | |
|---------------------------------------|-------------|----------------|
| The Museum of Modern Art Archives, NY | Collection: | Series.Folder: |
| | Valentin | VIII.C.97 |



A GIFT TO THE
PHOTO ARCHIVE
FROM CURT
VALENTIN
MUSEUM OF MODERN ART
LIBRARY

KLEE, PAUL

(Aquarell)

FOR STUDY PURPOSES ONLY. NOT FOR REPRODUCTION.

| | | |
|---------------------------------------|-------------|----------------|
| The Museum of Modern Art Archives, NY | Collection: | Series.Folder: |
| | Valentin | VIII.C.97 |



KLEE, PAUL

(Aquarell)

Made in Germany

FOR STUDY PURPOSES ONLY. NOT FOR REPRODUCTION.

| | | |
|---------------------------------------|-------------|----------------|
| The Museum of Modern Art Archives, NY | Collection: | Series.Folder: |
| | Valentin | VIII.C.97 |



A GIFT TO THE
PHOTO ARCHIVE
FROM CURT
VALENTIN
MUSEUM OF MODERN ART
LIBRARY

KLEE, PAUL

(Aquarell)

Made in Germany

FOR STUDY PURPOSES ONLY. NOT FOR REPRODUCTION.

| | | |
|---------------------------------------|-------------|----------------|
| The Museum of Modern Art Archives, NY | Collection: | Series.Folder: |
| | Valentin | VIII.C.97 |



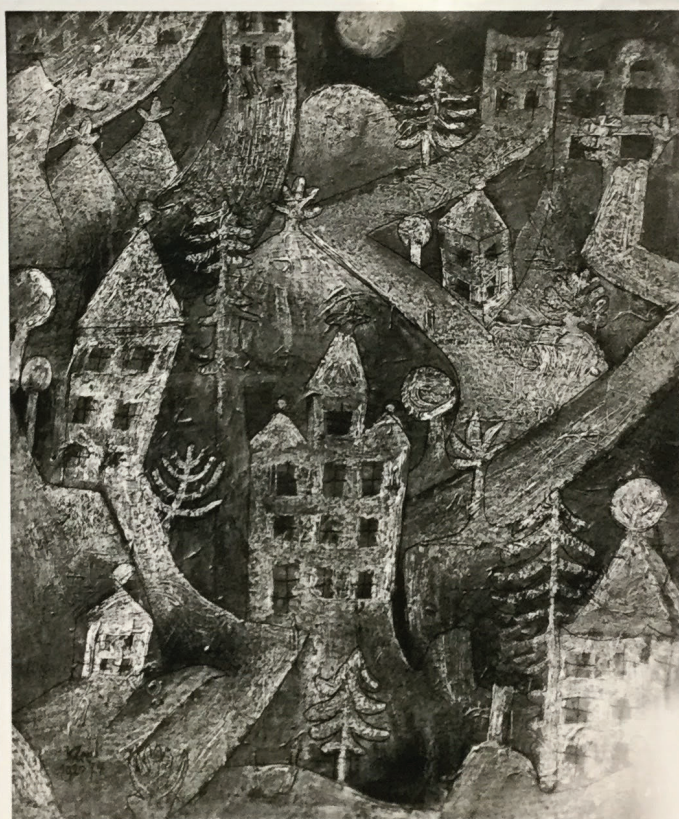
A GIFT TO THE
PHOTO ARCHIVE
FROM CURT
VALENTIN
MUSEUM OF MODERN ART
LIBRARY

KLEE, PAUL
DYING PLANTS- (Aquarell)
1922

Made in Germany

FOR STUDY PURPOSES ONLY. NOT FOR REPRODUCTION.

| | | |
|---------------------------------------|-------------|----------------|
| The Museum of Modern Art Archives, NY | Collection: | Series.Folder: |
| | Valentin | VIII.C.97 |

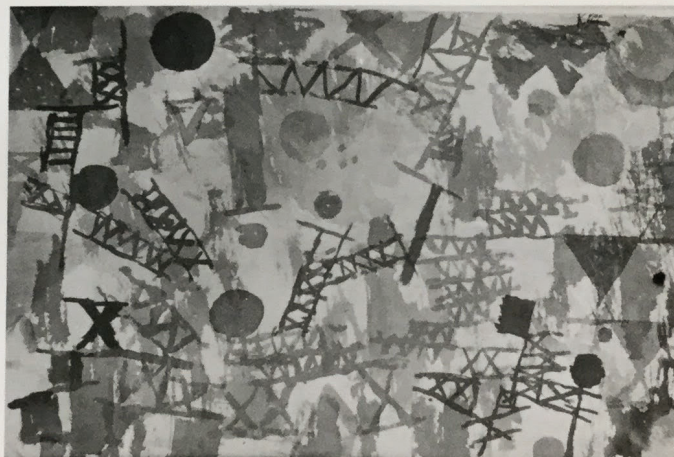


A GIFT TO THE
PHOTO ARCHIVE
FROM CURT
VALENTIN
MUSEUM OF MODERN ART
LIBRARY

KLEE, PAUL
COLONIE DE VILLAS ROUGES
1920
Made in Germany
COL. FLECHTHEIM-BERLIN

FOR STUDY PURPOSES ONLY. NOT FOR REPRODUCTION.

| | | |
|---------------------------------------|-------------|----------------|
| The Museum of Modern Art Archives, NY | Collection: | Series.Folder: |
| | Valentin | VIII.C.97 |



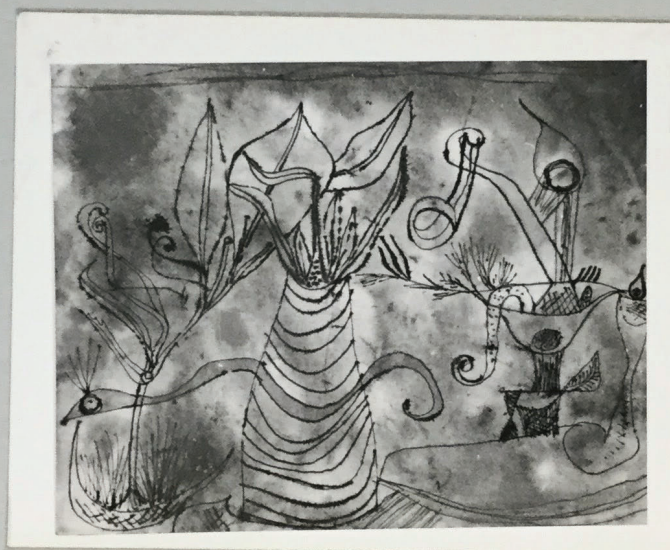
A GIFT TO THE
PHOTO ARCHIVE
FROM CURT
VALENTIN
MUSEUM OF MODERN ART
LIBRARY

KLEE, PAUL
WAR STRIDES OVER (Aquarell)
A VILLAGE -
1914

Made in Germany

FOR STUDY PURPOSES ONLY. NOT FOR REPRODUCTION.

| | | |
|---------------------------------------|-------------|----------------|
| The Museum of Modern Art Archives, NY | Collection: | Series.Folder: |
| | Valentin | VIII.C.97 |



A GIFT TO THE
PHOTO ARCHIVE
FROM CURT
VALENTIN
MUSEUM OF MODERN ART
LIBRARY

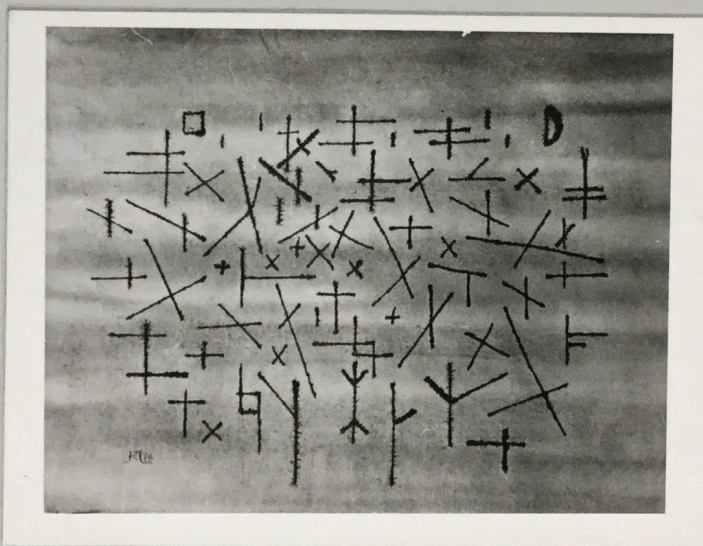
Klee, Paul

(Aquarell)

Made in Germany.

FOR STUDY PURPOSES ONLY. NOT FOR REPRODUCTION.

| | | |
|---------------------------------------|-------------|----------------|
| The Museum of Modern Art Archives, NY | Collection: | Series.Folder: |
| | Valentin | VIII.C.97 |



A GIFT TO THE
PHOTO ARCHIVE
FROM CURT
VALENTIN
MUSEUM OF MODERN ART
LIBRARY

KLEE, PAUL 1924 (Aquarell)
ZEICHENSAMMLUNG
COLLECTION OF SIGNS
9 1/2 x 11 3/4" Col. Sheet, Watercolor, Pen
Priv. Coll. USA