

CONDITIONS OF USE FOR THIS PDF

The images contained within this PDF may be used for private study, scholarship, and research only. They may not be published in print, posted on the internet, or exhibited. They may not be donated, sold, or otherwise transferred to another individual or repository without the written permission of The Museum of Modern Art Archives.

When publication is intended, publication-quality images must be obtained from SCALA Group, the Museum's agent for licensing and distribution of images to outside publishers and researchers.

If you wish to quote any of this material in a publication, an application for permission to publish must be submitted to the MoMA Archives. This stipulation also applies to dissertations and theses. All references to materials should cite the archival collection and folder, and acknowledge "The Museum of Modern Art Archives, New York."

Whether publishing an image or quoting text, you are responsible for obtaining any consents or permissions which may be necessary in connection with any use of the archival materials, including, without limitation, any necessary authorizations from the copyright holder thereof or from any individual depicted therein.

In requesting and accepting this reproduction, you are agreeing to indemnify and hold harmless The Museum of Modern Art, its agents and employees against all claims, demands, costs and expenses incurred by copyright infringement or any other legal or regulatory cause of action arising from the use of this material.

NOTICE: WARNING CONCERNING COPYRIGHT RESTRICTIONS

The copyright law of the United States (Title 17, United States Code) governs the making of photocopies or other reproductions of copyrighted material. Under certain conditions specified in the law, libraries and archives are authorized to furnish a photocopy or other reproduction. One of these specified conditions is that the photocopy or reproduction is not to be "used for any purpose other than private study, scholarship, or research." If a user makes a request for, or later uses, a photocopy or reproduction for purposes in excess of "fair use," that user may be liable for copyright infringement.

FOR STUDY PURPOSES ONLY. NOT FOR REPRODUCTION.

The Museum of Modern Art Archives, NY

Collection:

Valentin

Series.Folder:

VIII.C.127



FOR STUDY PURPOSES ONLY. NOT FOR REPRODUCTION.

The Museum of Modern Art Archives, NY	Collection:	Series.Folder:
	Valentin	VIII.C.127

MARC, FRANZ
Weisser Hund.

1969

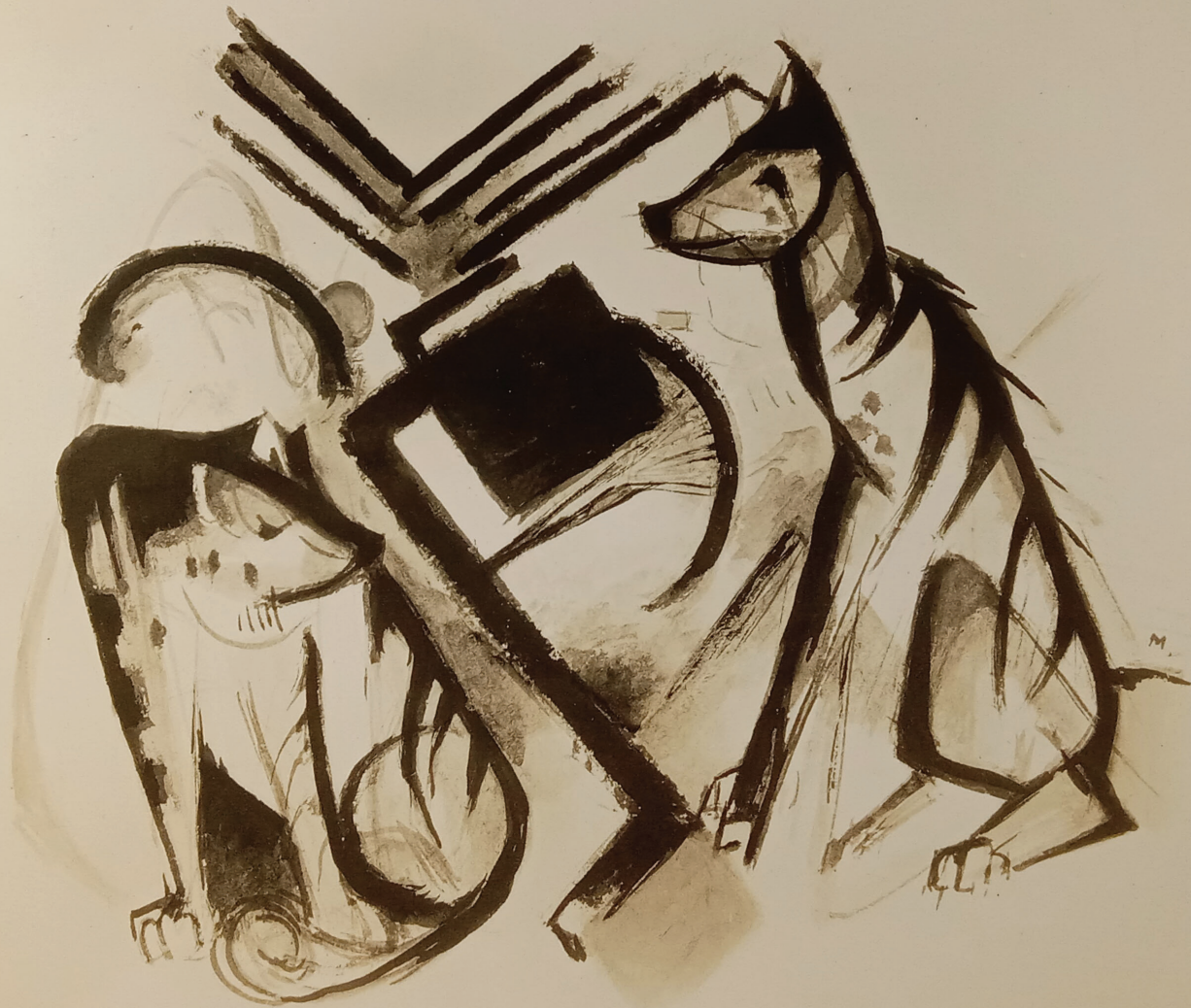
Städtische Gal., Frankfurt am Main.

63,5 x 78,5 cm

A GIFT TO THE
PHOTO ARCHIVE
FROM CURT
VALENTIN
MUSEUM OF MODERN ART
LIBRARY

FOR STUDY PURPOSES ONLY. NOT FOR REPRODUCTION.

The Museum of Modern Art Archives, NY	Collection:	Series.Folder:
	Valentin	VIII.C.127



FOR STUDY PURPOSES ONLY. NOT FOR REPRODUCTION.

The Museum of Modern Art Archives, NY	Collection:	Series.Folder:
	Valentin	VIII.C.127

MARC, FRANZ
Black wolves. 1913. (Watercolour)
14-3/8 x 17.
527
Solomon R.Guggenheim Foundation, Carnegie
Hall, Suite 1010, 7th Av. & 56th St., N.Y.

A GIFT TO THE
PHOTO ARCHIVE
FROM CURT
VALENTIN
MUSEUM OF MODERN ART
LIBRARY

FOR STUDY PURPOSES ONLY. NOT FOR REPRODUCTION.

The Museum of Modern Art Archives, NY	Collection:	Series.Folder:
	Valentin	VIII.C.127



Duplicate

FOR STUDY PURPOSES ONLY. NOT FOR REPRODUCTION.

The Museum of Modern Art Archives, NY	Collection:	Series.Folder:
	Valentin	VIII.C.127

MARC, FRANZ
The Bewitched Mill. 1913
5 1/2 x 5 1/2"
Neg. No. C - 10818
Photograph Section, Art Institute of
Chicago.
Publication of photo must be accompanied
by words "Courtesy of Art Institute of
Chicago, Arthur James Eddy Meme Collection"

A GIFT TO THE
PHOTO ARCHIVE
FROM CURT
VALENTIN
MUSEUM OF MODERN ART
LIBRARY

FOR STUDY PURPOSES ONLY. NOT FOR REPRODUCTION.

The Museum of Modern Art Archives, NY	Collection:	Series.Folder:
	Valentin	VIII.C.127



FOR STUDY PURPOSES ONLY. NOT FOR REPRODUCTION.

The Museum of Modern Art Archives, NY	Collection:	Series.Folder:
	Valentin	VIII.C.127

MARC, FRANZ
Donkeys. 1913 (Watercolour)
8½ x 6½
528
Solomon R. Guggenheim Foundation,
Carnegie Hall, Suite 1010, 7th Av. &
56 th St., N.Y.C.

A GIFT TO THE
PHOTO ARCHIVE
FROM CURT
VALENTIN
MUSEUM OF MODERN ART
LIBRARY

FOR STUDY PURPOSES ONLY. NOT FOR REPRODUCTION.

The Museum of Modern Art Archives, NY	Collection:	Series.Folder:
	Valentin	VIII.C.127



FOR STUDY PURPOSES ONLY. NOT FOR REPRODUCTION.

The Museum of Modern Art Archives, NY	Collection:	Series.Folder:
	Valentin	VIII.C.127

MARC, FRANZ

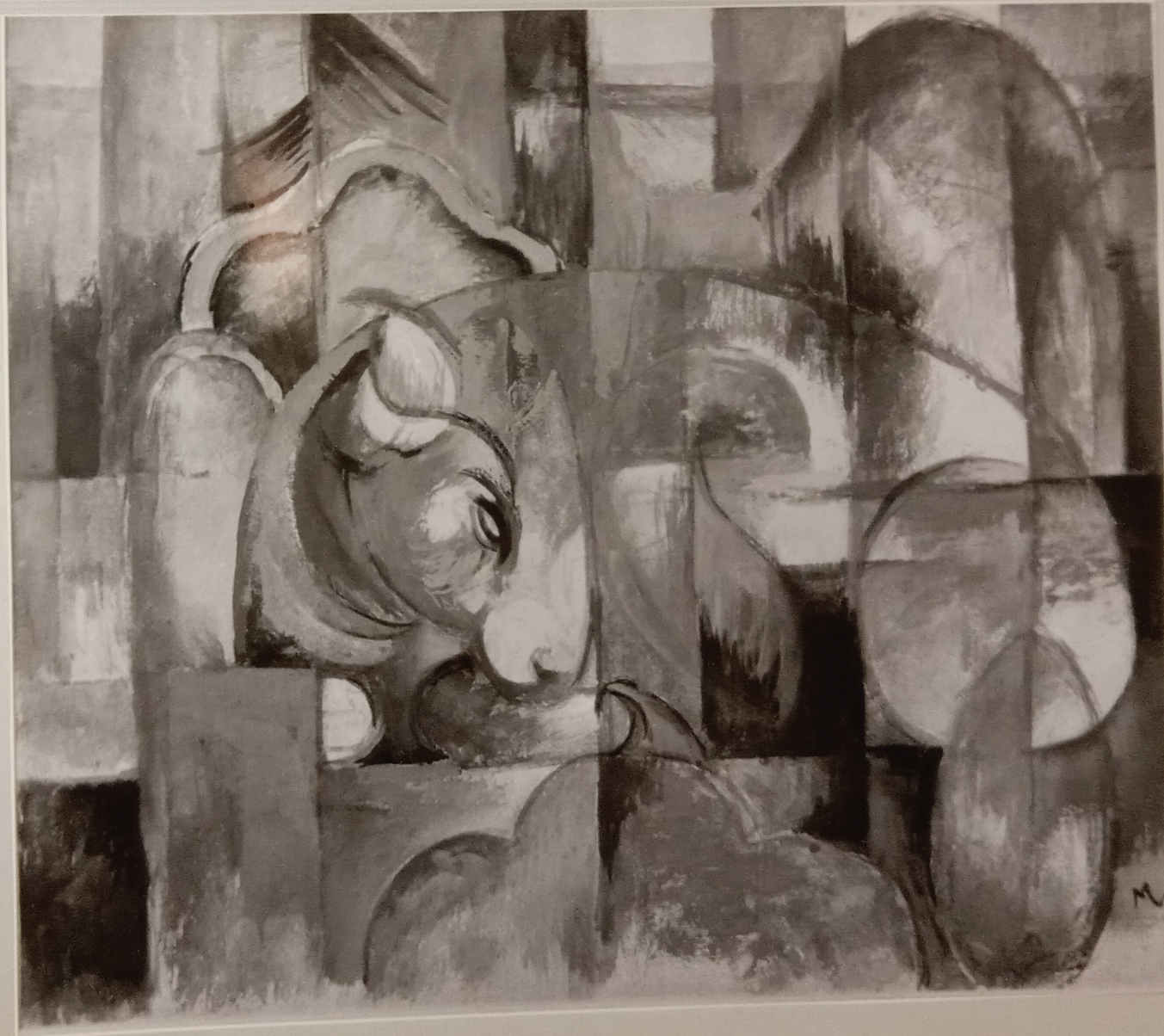
HORSE
WATERCOLOR

1910

A GIFT TO THE
PHOTO ARCHIVE
FROM CURT
VALENTIN
MUSEUM OF MODERN ART
LIBRARY

FOR STUDY PURPOSES ONLY. NOT FOR REPRODUCTION.

The Museum of Modern Art Archives, NY	Collection:	Series.Folder:
	Valentin	VIII.C.127



FOR STUDY PURPOSES ONLY. NOT FOR REPRODUCTION.

The Museum of Modern Art Archives, NY	Collection:	Series.Folder:
	Valentin	VIII.C.127

MARC, FRANZ
LIEGENDER STIER. 1913
TEMPERA. 60.46 cm

A GIFT TO THE
PHOTO ARCHIVE
FROM CURT
VALENTIN
MUSEUM OF MODERN ART
LIBRARY

FOR STUDY PURPOSES ONLY. NOT FOR REPRODUCTION.

The Museum of Modern Art Archives, NY	Collection:	Series.Folder:
	Valentin	VIII.C.127



FOR STUDY PURPOSES ONLY. NOT FOR REPRODUCTION.

The Museum of Modern Art Archives, NY	Collection:	Series.Folder:
	Valentin	VIII.C.127

MARC, FRANZ
Blue Horses. 1914. (Watercolour)
7½ x 4½
529
Solomon R. Guggenheim Foundation,
Carnegie Hall, Suite 1010, 7th Ave. &
56th St., N.Y.C.

A GIFT TO THE
PHOTO ARCHIVE
FROM CURT
VALENTIN
MUSEUM OF MODERN ART
LIBRARY

FOR STUDY PURPOSES ONLY. NOT FOR REPRODUCTION.

The Museum of Modern Art Archives, NY	Collection:	Series.Folder:
	Valentin	VIII.C.127



FOR STUDY PURPOSES ONLY. NOT FOR REPRODUCTION.

The Museum of Modern Art Archives, NY	Collection:	Series.Folder:
	Valentin	VIII.C.127

MARC, FRANZ
Cattle in the Jungle. 1914
Detroit Institute of Arts.

DL-43³/₁₀ x 39¹/₂

A GIFT TO THE
PHOTO ARCHIVE
FROM CURT
VALENTIN
MUSEUM OF MODERN ART
LIBRARY

FOR STUDY PURPOSES ONLY. NOT FOR REPRODUCTION.

The Museum of Modern Art Archives, NY

Collection:

Valentin

Series.Folder:

VIII.C.127



MARC, FRANZ
DIE ANGST DES HASEN - 1912
Fot. F. Nitzsche. 012

75 x 135 cm

Coll. WIEGMANN-BERLIN

A GIFT TO THE
PHOTO ARCHIVE
FROM CURT
VALENTIN
MUSEUM OF MODERN ART
LIBRARY

FOR STUDY PURPOSES ONLY. NOT FOR REPRODUCTION.

The Museum of Modern Art Archives, NY	Collection:	Series.Folder:
	Valentin	VIII.C.127



A GIFT TO THE
PHOTO ARCHIVE

FROM CURT
VALENTIN

MUSEUM OF MODERN ART
LIBRARY

MARC, FRANZ, 1880-1916
"Mountains" 1913 (Canvas)
51½ x 39½ inches.
Photo: Gabriel Moulin, 163 Kearny St.,
San Francisco, Cal. 38562
Scheffer Galleries, 1155 California St.,
San Francisco.

FOR STUDY PURPOSES ONLY. NOT FOR REPRODUCTION.

The Museum of Modern Art Archives, NY	Collection:	Series.Folder:
	Valentin	VIII.C.127



A GIFT TO THE
PHOTO ARCHIVE
FROM CURT
VALENTIN
MUSEUM OF MODERN ART
LIBRARY

MARC, FRANZ
ZWEI PFERDE (TEMPERA) 1912

#21
Museum of Art, Rhode Island School
of Design.

FOR STUDY PURPOSES ONLY. NOT FOR REPRODUCTION.

The Museum of Modern Art Archives, NY	Collection:	Series.Folder:
	Valentin	VIII.C.127



A GIFT TO THE
PHOTO ARCHIVE
FROM CURT
VALENTIN
MUSEUM OF MODERN ART
LIBRARY

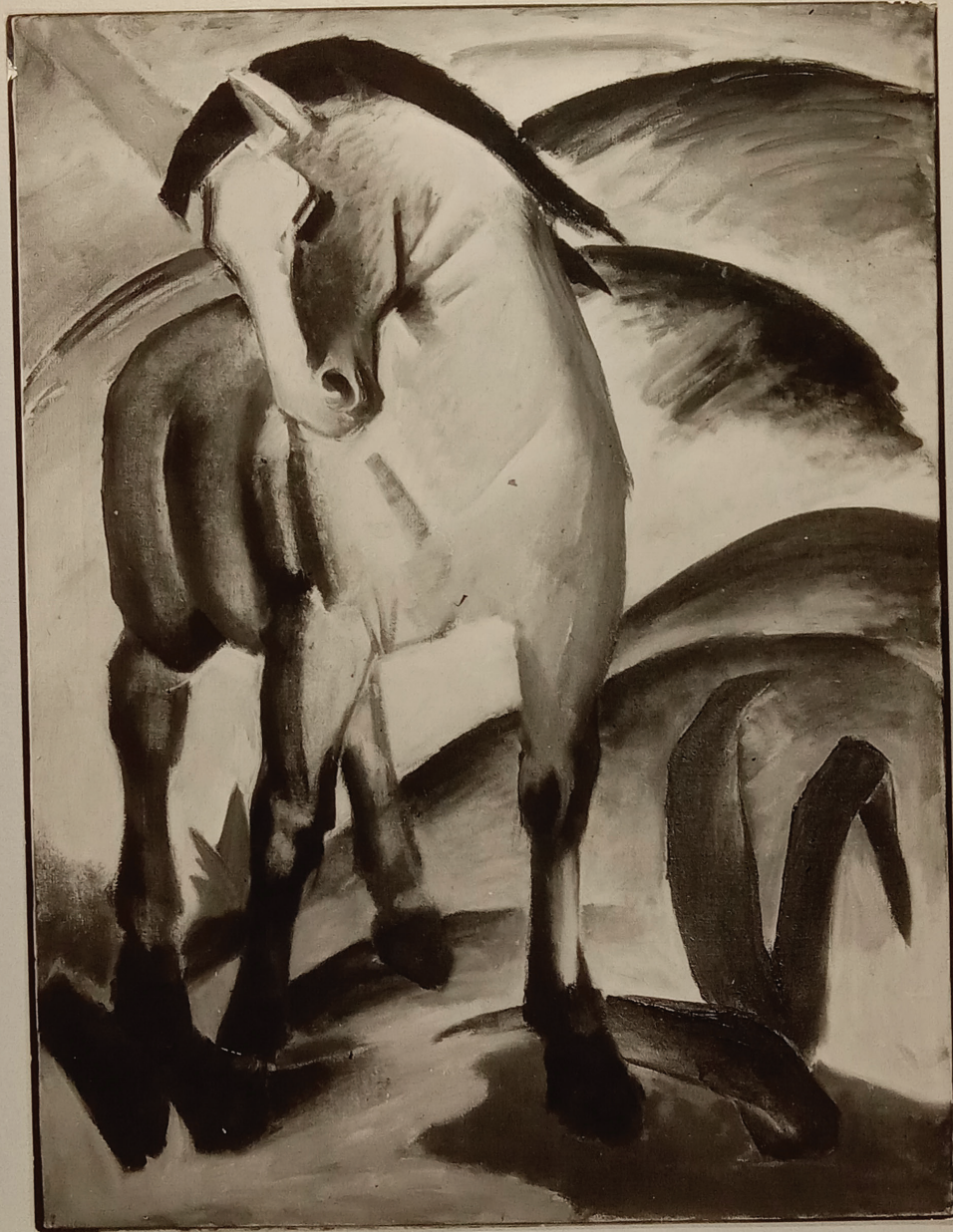
MMA 4466
Copy Neg 3/57

MARC, FRANZ
Turm der blauen Pferde 1913
200 x 130 cm
National Galerie, Berlin Kat. 1304.

(National Galerie, Berlin stamp on back)

FOR STUDY PURPOSES ONLY. NOT FOR REPRODUCTION.

The Museum of Modern Art Archives, NY	Collection:	Series.Folder:
	Valentin	VIII.C.127



A GIFT TO THE
PHOTO ARCHIVE
FROM CURT
VALENTIN
MUSEUM OF MODERN ART
LIBRARY

MARC, FRANZ
Das blaue Pferd 1911
112 x 84,5 cm - OIL
(Stamped on back with National Galerie
Berlin stamp)

Privat Besitz.

FOR STUDY PURPOSES ONLY. NOT FOR REPRODUCTION.

The Museum of Modern Art Archives, NY	Collection:	Series.Folder:
	Valentin	VIII.C.127



A GIFT TO THE
PHOTO ARCHIVE
FROM CURT
VALENTIN
MUSEUM OF MODERN ART
LIBRARY

MARC, FRANZ
TURM DER BLAUEH PFERDE
AQUARELL 1913
ON A POSTCARD
NATIONAL GALERIE - BERLIN

FOR STUDY PURPOSES ONLY. NOT FOR REPRODUCTION.

The Museum of Modern Art Archives, NY	Collection:	Series.Folder:
	Valentin	VIII.C.127



A GIFT TO THE
PHOTO ARCHIVE
FROM CURT
VALENTIN
MUSEUM OF MODERN ART
LIBRARY

MARC, FRANZ
~~Der Gabah ?~~ RUHENDE ANTILOPE
WATER COLOR 1913
15 5/8 x 18 3/4"
MUSEUM OF ART - (R.I. School of
Design) Providence

FOR STUDY PURPOSES ONLY. NOT FOR REPRODUCTION.

The Museum of Modern Art Archives, NY	Collection:	Series.Folder:
	Valentin	VIII.C.127

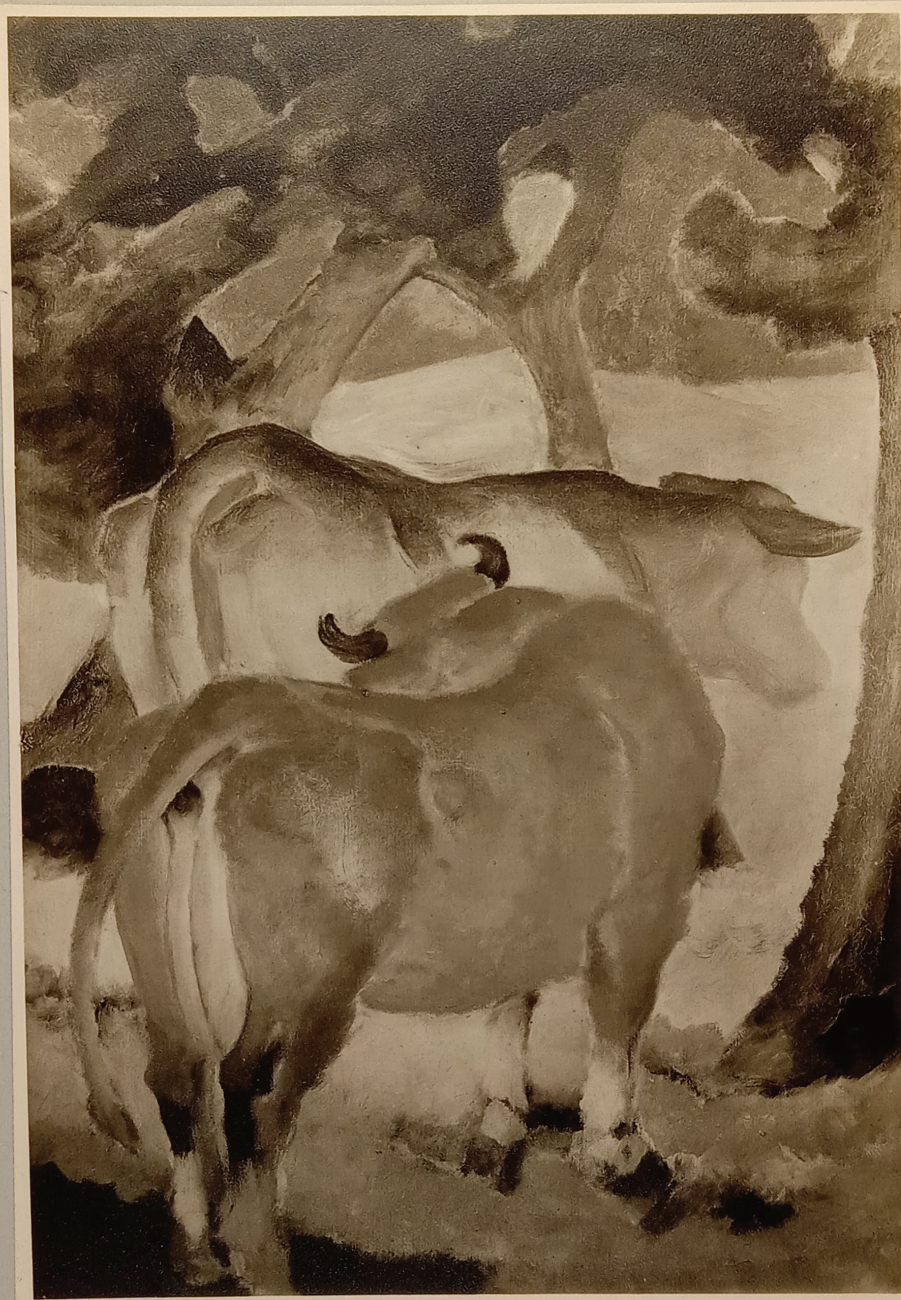


A GIFT TO THE
PHOTO ARCHIVE
FROM CURT
VALENTIN
MUSEUM OF MODERN ART
LIBRARY

MARC, FRANZ
Hund, Katze und Fuchs. 1911
80 x 105 cm.
6047
#52
Mannheim. Cat 19

FOR STUDY PURPOSES ONLY. NOT FOR REPRODUCTION.

The Museum of Modern Art Archives, NY	Collection:	Series.Folder:
	Valentin	VIII.C.127



A GIFT TO THE
PHOTO ARCHIVE
FROM CURT
VALENTIN
MUSEUM OF MODERN ART
LIBRARY

MARC, FRANZ
"Die roten Kühe" oder "Kühe unter
Bäumen". (Öl auf Leinwand) 1911.
100 x 70 cm.

coll. KOEHLER. BERLIN.

FOR STUDY PURPOSES ONLY. NOT FOR REPRODUCTION.

The Museum of Modern Art Archives, NY	Collection:	Series.Folder:
	Valentin	VIII.C.127



A GIFT TO THE
PHOTO ARCHIVE
FROM CURT
VALENTIN
MUSEUM OF MODERN ART
LIBRARY

MARC, FRANZ
BIRDS no.10. 1913-1914
110:99.5 cm.
13683
#90

Made in Germany

FOR STUDY PURPOSES ONLY. NOT FOR REPRODUCTION.

The Museum of Modern Art Archives, NY	Collection:	Series.Folder:
	Valentin	VIII.C.127



A GIFT TO THE
PHOTO ARCHIVE
FROM CURT
VALENTIN
MUSEUM OF MODERN ART
LIBRARY

MARC
TWO HORSES IN A LANDSCAPE
4905
Cat. 92
1911

FOR STUDY PURPOSES ONLY. NOT FOR REPRODUCTION.

The Museum of Modern Art Archives, NY	Collection:	Series.Folder:
	Valentin	VIII.C.127



A GIFT TO THE
PHOTO ARCHIVE
FROM CURT
VALENTIN
MUSEUM OF MODERN ART
LIBRARY

MARC, FRANZ
Pferde in Landschaft. 1912
TEMPERA - 18 3/4 x 14 1/2

Made in Germany