

CONDITIONS OF USE FOR THIS PDF

The images contained within this PDF may be used for private study, scholarship, and research only. They may not be published in print, posted on the internet, or exhibited. They may not be donated, sold, or otherwise transferred to another individual or repository without the written permission of The Museum of Modern Art Archives.

When publication is intended, publication-quality images must be obtained from SCALA Group, the Museum's agent for licensing and distribution of images to outside publishers and researchers.

If you wish to quote any of this material in a publication, an application for permission to publish must be submitted to the MoMA Archives. This stipulation also applies to dissertations and theses. All references to materials should cite the archival collection and folder, and acknowledge "The Museum of Modern Art Archives, New York."

Whether publishing an image or quoting text, you are responsible for obtaining any consents or permissions which may be necessary in connection with any use of the archival materials, including, without limitation, any necessary authorizations from the copyright holder thereof or from any individual depicted therein.

In requesting and accepting this reproduction, you are agreeing to indemnify and hold harmless The Museum of Modern Art, its agents and employees against all claims, demands, costs and expenses incurred by copyright infringement or any other legal or regulatory cause of action arising from the use of this material.

NOTICE: WARNING CONCERNING COPYRIGHT RESTRICTIONS

The copyright law of the United States (Title 17, United States Code) governs the making of photocopies or other reproductions of copyrighted material. Under certain conditions specified in the law, libraries and archives are authorized to furnish a photocopy or other reproduction. One of these specified conditions is that the photocopy or reproduction is not to be "used for any purpose other than private study, scholarship, or research." If a user makes a request for, or later uses, a photocopy or reproduction for purposes in excess of "fair use," that user may be liable for copyright infringement.

FOR STUDY PURPOSES ONLY. NOT FOR REPRODUCTION.

The Museum of Modern Art Archives, NY	Collection:	Series.Folder:
	Valentin	VIII.C.116



FOR STUDY PURPOSES ONLY. NOT FOR REPRODUCTION.

The Museum of Modern Art Archives, NY	Collection:	Series.Folder:
	Valentin	VIII.C.116

LEHMBRUCK, WILHELM
WEIBLICHER TORSO- PARIS 1910-11

Photo: Emil Muench, 617 $\frac{1}{2}$ Olive St.,
Santa Barbara, Calif.

$\frac{3}{4}$ LIFE SIZE

FOLKWAHLE MUSEUM HABEN



FOR STUDY PURPOSES ONLY. NOT FOR REPRODUCTION.

The Museum of Modern Art Archives, NY	Collection:	Series.Folder:
	Valentin	VIII.C.116



LEHMBRUCK, WILHELM
SEATED WOMAN- 1913.14
BRONZE-
(Terracotta in IRA HART PT coll.)

FOR STUDY PURPOSES ONLY. NOT FOR REPRODUCTION.

The Museum of Modern Art Archives, NY	Collection:	Series.Folder:
	Valentin	VIII.C.116



A GIFT TO THE
PHOTO ARCHIVE
FROM CURT
VALENTIN
MUSEUM OF MODERN ART
LIBRARY

LEHMBRUCK, WILHELM
MÄDCHEN KOPF - SINNEHDE - 1912
STADTMUSEUM HALLE

FOR STUDY PURPOSES ONLY. NOT FOR REPRODUCTION.

The Museum of Modern Art Archives, NY	Collection:	Series.Folder:
	Valentin	VIII.C.116



FOR STUDY PURPOSES ONLY. NOT FOR REPRODUCTION.

The Museum of Modern Art Archives, NY	Collection:	Series.Folder:
	Valentin	VIII.C.116

LEHMBRUCK, WILHELM
Bust of a young woman.
19" high.
205

TERACOTTA
H. 28 3/4" - W. 28"
(Pencilled on back "Buffalo ?")

col. John Cowles - MINNEAPOLIS



FOR STUDY PURPOSES ONLY. NOT FOR REPRODUCTION.

The Museum of Modern Art Archives, NY	Collection:	Series.Folder:
	Valentin	VIII.C.116



A GIFT TO THE
PHOTO ARCHIVE
FROM CURT
VALENTIN
MUSEUM OF MODERN ART
LIBRARY

LEHMBRUCK, WILHELM 1913-14
MÄDCHENKOPF, SICH UMWENDEND
F.29
Schwartzkopf, Atelier für techn. Foto-
grafie, Berlin SW 61, Yorckstr., 84 D.
Abdruck nur mit Angabe des Ateliers.
LIFE SIZE

FOR STUDY PURPOSES ONLY. NOT FOR REPRODUCTION.

The Museum of Modern Art Archives, NY	Collection:	Series.Folder:
	Valentin	VIII.C.116



A GIFT TO THE
PHOTO ARCHIVE
FROM CURT
VALENTIN
MUSEUM OF MODERN ART
LIBRARY

LEHMBURCK, WILHELM
BUST OF FRAU LEHMBURCK 1910
C3972
On publication please credit: Carl
Klein Studios, 9 E. 59 St., N.Y.
H. 13 1/4" KUNSTMUSEUM-
C3971 - other side ESSEN

FOR STUDY PURPOSES ONLY. NOT FOR REPRODUCTION.

The Museum of Modern Art Archives, NY	Collection:	Series.Folder:
	Valentin	VIII.C.116



FOR STUDY PURPOSES ONLY. NOT FOR REPRODUCTION.

The Museum of Modern Art Archives, NY	Collection:	Series.Folder:
	Valentin	VIII.C.116



A GIFT TO THE
PHOTO ARCHIVE
FROM CURT
VALENTIN
MUSEUM OF MODERN ART
LIBRARY

LEHMBRUCK, WILHELM
Frauenportrait. Paris 1911. (Bronze)
82 cm.

From Flechtheim.

FOR STUDY PURPOSES ONLY. NOT FOR REPRODUCTION.

The Museum of Modern Art Archives, NY	Collection:	Series.Folder:
	Valentin	VIII.C.116



A GIFT TO THE
PHOTO ARCHIVE
FROM CURT
VALENTIN
MUSEUM OF MODERN ART
LIBRARY

LEHMBRUCK, WILHELM
BATHE RS- 1912
Fot. F. Nitzsche.

DIL -

Buchholz Gal., N.Y.

FOR STUDY PURPOSES ONLY. NOT FOR REPRODUCTION.

The Museum of Modern Art Archives, NY	Collection:	Series.Folder:
	Valentin	VIII.C.116

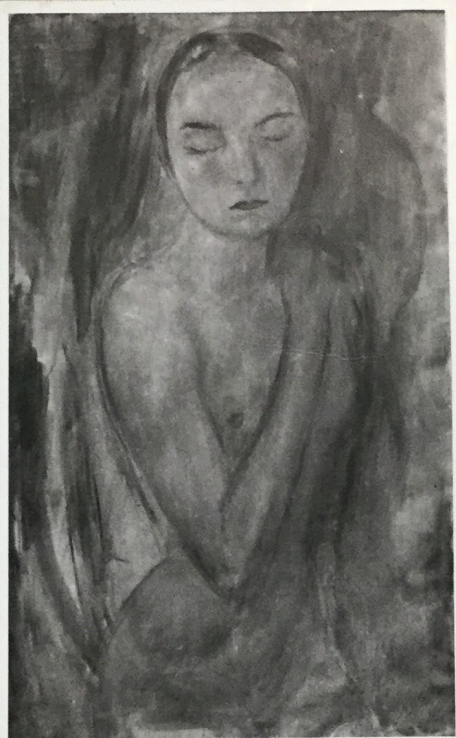


A GIFT TO THE
PHOTO ARCHIVE
FROM CURT
VALENTIN
MUSEUM OF MODERN ART
LIBRARY

LEHMBRUCK, W.
HMDE- 1912 (Sepia)
41.3 x 29.5 cm.
Sign. W. Lehmbruck, 1912.
Widmung: 1914.

FOR STUDY PURPOSES ONLY. NOT FOR REPRODUCTION.

The Museum of Modern Art Archives, NY	Collection:	Series.Folder:
	Valentin	VIII.C.116



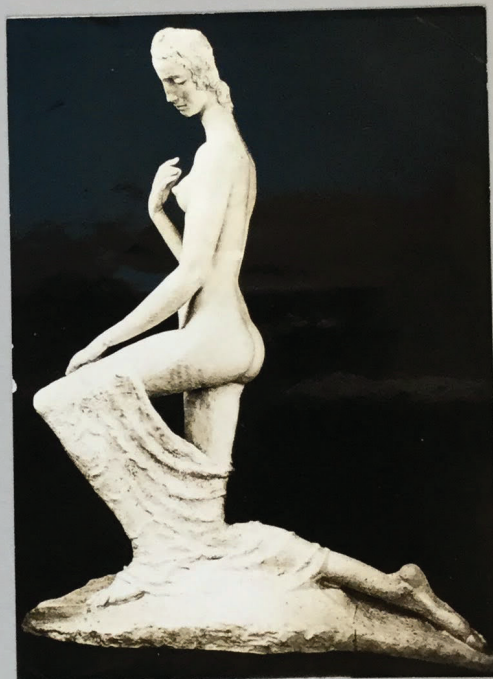
A GIFT TO THE
PHOTO ARCHIVE
FROM CURT
VALENTIN
MUSEUM OF MODERN ART
LIBRARY

LEHMBRUCK
MARTHA - OIL - 1912
KÖLN
6040
#98

Made in Germany

FOR STUDY PURPOSES ONLY. NOT FOR REPRODUCTION.

The Museum of Modern Art Archives, NY	Collection:	Series.Folder:
	Valentin	VIII.C.116



A GIFT TO THE
PHOTO ARCHIVE
FROM CURT
VALENTIN
MUSEUM OF MODERN ART
LIBRARY

LEHMBRUCK, WILHELM
Kneeling woman. 1911.
MAHN HEIM - KUNSTHALLE
MOMA - NY.

FOR STUDY PURPOSES ONLY. NOT FOR REPRODUCTION.

The Museum of Modern Art Archives, NY	Collection:	Series.Folder:
	Valentin	VIII.C.116



A GIFT TO THE
PHOTO ARCHIVE
FROM CURT
VALENTIN
MUSEUM OF MODERN ART
LIBRARY

LEHMBRUCK, WILHELM
Standing youth.

PARIS- 1913

MOMA, N.Y.

FOR STUDY PURPOSES ONLY. NOT FOR REPRODUCTION.

The Museum of Modern Art Archives, NY	Collection:	Series.Folder:
	Valentin	VIII.C.116



A GIFT TO THE
PHOTO ARCHIVE
FROM CURT
VALENTIN
MUSEUM OF MODERN ART
LIBRARY

LEHMBRUCK, WILHELM 1915-16
Stürmender ? RAGING MAN (Bronze)
Höhe 44 cm.
Kramer-Foto. Reproduktion, Vervielfältigung oder Verbreitung ohne ausdrückliche Genehmigung verboten.