

CONDITIONS OF USE FOR THIS PDF

The images contained within this PDF may be used for private study, scholarship, and research only. They may not be published in print, posted on the internet, or exhibited. They may not be donated, sold, or otherwise transferred to another individual or repository without the written permission of The Museum of Modern Art Archives.

When publication is intended, publication-quality images must be obtained from SCALA Group, the Museum's agent for licensing and distribution of images to outside publishers and researchers.

If you wish to quote any of this material in a publication, an application for permission to publish must be submitted to the MoMA Archives. This stipulation also applies to dissertations and theses. All references to materials should cite the archival collection and folder, and acknowledge "The Museum of Modern Art Archives, New York."

Whether publishing an image or quoting text, you are responsible for obtaining any consents or permissions which may be necessary in connection with any use of the archival materials, including, without limitation, any necessary authorizations from the copyright holder thereof or from any individual depicted therein.

In requesting and accepting this reproduction, you are agreeing to indemnify and hold harmless The Museum of Modern Art, its agents and employees against all claims, demands, costs and expenses incurred by copyright infringement or any other legal or regulatory cause of action arising from the use of this material.

NOTICE: WARNING CONCERNING COPYRIGHT RESTRICTIONS

The copyright law of the United States (Title 17, United States Code) governs the making of photocopies or other reproductions of copyrighted material. Under certain conditions specified in the law, libraries and archives are authorized to furnish a photocopy or other reproduction. One of these specified conditions is that the photocopy or reproduction is not to be "used for any purpose other than private study, scholarship, or research." If a user makes a request for, or later uses, a photocopy or reproduction for purposes in excess of "fair use," that user may be liable for copyright infringement.

FOR STUDY PURPOSES ONLY. NOT FOR REPRODUCTION.

The Museum of Modern Art Archives, NY	Collection:	Series.Folder:
	Valentin	VIII.B.168

AAVV



FOR STUDY PURPOSES ONLY. NOT FOR REPRODUCTION.

The Museum of Modern Art Archives, NY	Collection:	Series.Folder:
	Valentin	VIII.B.168

AA22

9303

Reclining Figure
Bronze 5"L, 3"H
Henry Moore

1945

Coll: Perls Gallery, Calif.

FOR STUDY PURPOSES ONLY. NOT FOR REPRODUCTION.

The Museum of Modern Art Archives, NY	Collection:	Series.Folder:
	Valentin	VIII.B.168

✓
W 92



FOR STUDY PURPOSES ONLY. NOT FOR REPRODUCTION.

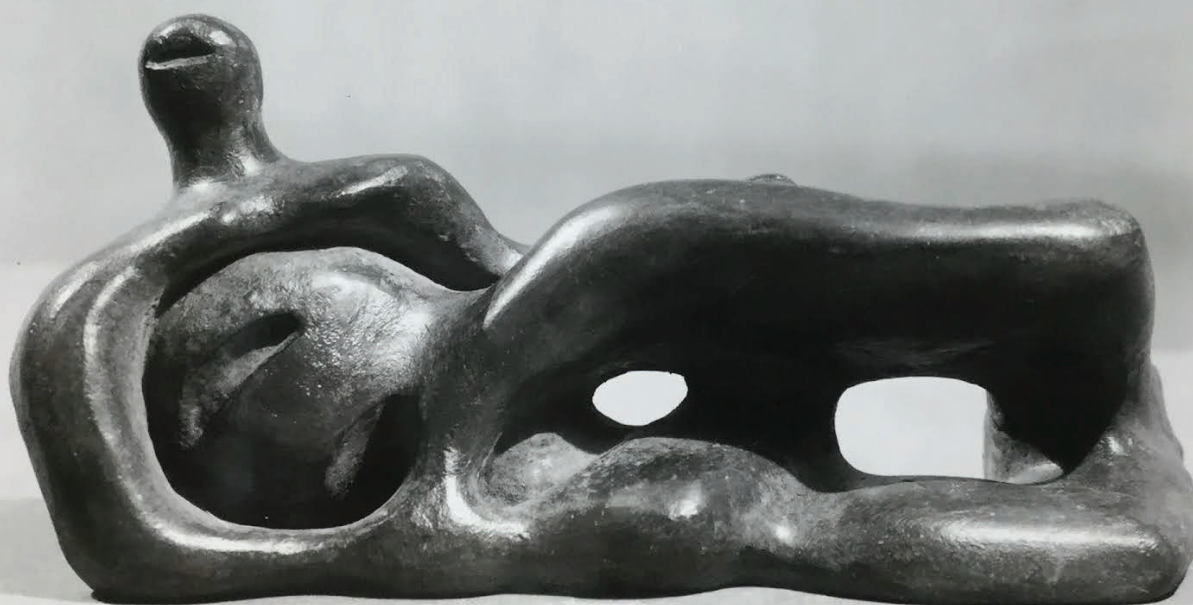
The Museum of Modern Art Archives, NY	Collection:	Series.Folder:
	Valentin	VIII.B.168

W.92
HENRY MOORE
FAMILY GROUP
SMALL VERSION
BRONZE

FOR STUDY PURPOSES ONLY. NOT FOR REPRODUCTION.

The Museum of Modern Art Archives, NY	Collection:	Series.Folder:
	Valentin	VIII.B.168

W 96



FOR STUDY PURPOSES ONLY. NOT FOR REPRODUCTION.

The Museum of Modern Art Archives, NY	Collection:	Series.Folder:
	Valentin	VIII.B.168

Henry Moore 8317 W96

Study for Elmwood Figure - 1945

Bronze 3 $\frac{1}{4}$ inches high
7 " long

Coll: MARION WILLARD

Coll: Downtown Gallery

Mr. Leigh B. Block, Chicago

FOR STUDY PURPOSES ONLY. NOT FOR REPRODUCTION.

The Museum of Modern Art Archives, NY	Collection:	Series.Folder:
	Valentin	VIII.B.168



FOR STUDY PURPOSES ONLY. NOT FOR REPRODUCTION.

The Museum of Modern Art Archives, NY	Collection:	Series.Folder:
	Valentin	VIII.B.168

Henry Moore 7310 U68
Reclining Figure 16 L.
bronze - polished 6 1/4 inches high
1945

Coll: Joseph Hirshhorn, New York City

Henry Moore 7311 U68
Reclining Figure
bronze - polished 6 1/4 " high
(originally black) 16 " long
1945

Coll: Nelson Rockefeller, New York City

San Francisco Museum #7312
Albert List. Conn. - #9931

FOR STUDY PURPOSES ONLY. NOT FOR REPRODUCTION.

The Museum of Modern Art Archives, NY	Collection:	Series.Folder:
	Valentin	VIII.B.168

W97



FOR STUDY PURPOSES ONLY. NOT FOR REPRODUCTION.

The Museum of Modern Art Archives, NY	Collection:	Series.Folder:
	Valentin	VIII.B.168

Henry Moore:

8321

W97

Sketch for Darlington Figure II - 1945

Bronze $4\frac{1}{4}$ inches high
7 " long

Coll: Lee A. Ash

FOR STUDY PURPOSES ONLY. NOT FOR REPRODUCTION.

The Museum of Modern Art Archives, NY	Collection:	Series.Folder:
	Valentin	VIII.B.168



FOR STUDY PURPOSES ONLY. NOT FOR REPRODUCTION.

The Museum of Modern Art Archives, NY	Collection:	Series.Folder:
	Valentin	VIII.B.168

AA56

9378

Two Seated Women and a Child. 1945
Bronze 7" H., 4 $\frac{1}{4}$ " L.

Coll: Lee A. Ault, NYC
(Moore Book, # 106d)

FOR STUDY PURPOSES ONLY. NOT FOR REPRODUCTION.

The Museum of Modern Art Archives, NY	Collection:	Series.Folder:
	Valentin	VIII.B.168



FOR STUDY PURPOSES ONLY. NOT FOR REPRODUCTION.

The Museum of Modern Art Archives, NY	Collection:	Series.Folder:
	Valentin	VIII.B.168

W94

Two Seated Women and a Child. { 10695
1945 8316

Bronze

7" H., 4 $\frac{1}{4}$ "

Henry Moore

(Moore Book # 106d)

Coll: Mrs. Gilbert Chapman, NYC

Mrs. Alice C. Spaulding, Honolulu Academy of Arts

FOR STUDY PURPOSES ONLY. NOT FOR REPRODUCTION.

The Museum of Modern Art Archives, NY	Collection:	Series.Folder:
	Valentin	VIII.B.168



FOR STUDY PURPOSES ONLY. NOT FOR REPRODUCTION.

The Museum of Modern Art Archives, NY	Collection:	Series.Folder:
	Valentin	VIII.B.168

Henry Moore

7266

T70

Family Group with Child
bronze

ca. 1945
4 7/8 inches high

Coll: Mrs. Benjamin Watson, New York City

FOR STUDY PURPOSES ONLY. NOT FOR REPRODUCTION.

The Museum of Modern Art Archives, NY	Collection:	Series.Folder:
	Valentin	VIII.B.168



FOR STUDY PURPOSES ONLY. NOT FOR REPRODUCTION.

The Museum of Modern Art Archives, NY	Collection:	Series.Folder:
	Valentin	VIII.B.168

Y-66

9050

Henry Moore

Family Group

Bronze.

1945

9 $\frac{3}{4}$ "H.

Coll: BILLY WILDER. CALIFORNIA

Wright Ludington, Santa Barbara (7559)

John S. Newberry, Jr. (8323)

M.O.M.A.

John Rood, Minn. (10624)

FOR STUDY PURPOSES ONLY. NOT FOR REPRODUCTION.

The Museum of Modern Art Archives, NY	Collection:	Series.Folder:
	Valentin	VIII.B.168

A09



FOR STUDY PURPOSES ONLY. NOT FOR REPRODUCTION.

The Museum of Modern Art Archives, NY	Collection:	Series.Folder:
	Valentin	VIII.B.168

AO-9

12288

Sketch for Hope Figure. 1945
bronze 8½" long, 3¼" H.
Henry Moore

Coll:

Mrs. Richard Deutsch, Greenwich
Harmon Goldstone, NYC (12774)
W. Selinsky, NYC (13193)

FOR STUDY PURPOSES ONLY. NOT FOR REPRODUCTION.

The Museum of Modern Art Archives, NY	Collection:	Series.Folder:
	Valentin	VIII.B.168



AE79



AE80

FOR STUDY PURPOSES ONLY. NOT FOR REPRODUCTION.

The Museum of Modern Art Archives, NY	Collection:	Series.Folder:
	Valentin	VIII.B.168

AE79

10737

Henry Moore
Family Group.
Bronze. 5 1/8"H.

1946

Coll: Mrs. John Wintersteen, Phil

AE80

10738

Henry Moore
Reclining Figure.
Bronze. 3"H. 6 1/2"L.

1945

Coll: Don Alex Ciorlizza, Peru, S.A.

FOR STUDY PURPOSES ONLY. NOT FOR REPRODUCTION.

The Museum of Modern Art Archives, NY	Collection:	Series.Folder:
	Valentin	VIII.B.168

W.99



FOR STUDY PURPOSES ONLY. NOT FOR REPRODUCTION.

The Museum of Modern Art Archives, NY	Collection:	Series.Folder:
	Valentin	VIII.B.168

AA24



FOR STUDY PURPOSES ONLY. NOT FOR REPRODUCTION.

The Museum of Modern Art Archives, NY	Collection:	Series.Folder:
	Valentin	VIII.B.168

AA24 Sketch for Elmwood 9305
(brown) Bronze 6 $\frac{1}{2}$ " L, 3 $\frac{1}{4}$ " H 1945-46
Henry Moore

Coll: Mrs. Robert Popper, NYC
Harry I. Caesar

FOR STUDY PURPOSES ONLY. NOT FOR REPRODUCTION.

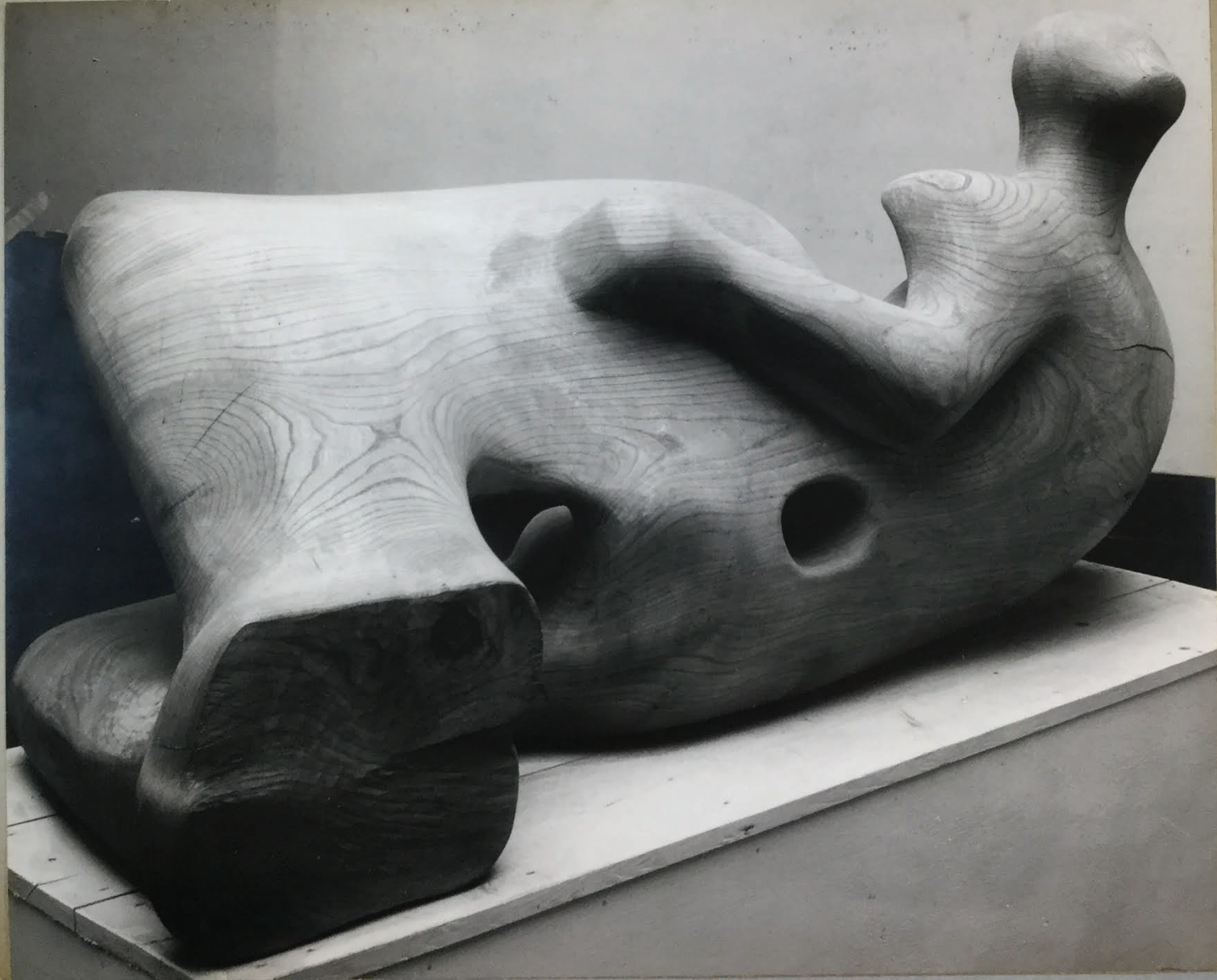
The Museum of Modern Art Archives, NY

Collection:

Valentin

Series.Folder:

VIII.B.168



FOR STUDY PURPOSES ONLY. NOT FOR REPRODUCTION.

The Museum of Modern Art Archives, NY	Collection:	Series.Folder:
	Valentin	VIII.B.168

Henry Moore

(see AC91)

Reclining Figure
elmwood

6 feet 3 inches long
1945-1946

Coll:

w. 22, H. 33"

FOR STUDY PURPOSES ONLY. NOT FOR REPRODUCTION.

The Museum of Modern Art Archives, NY

Collection:

Valentin

Series.Folder:

VIII.B.168



FOR STUDY PURPOSES ONLY. NOT FOR REPRODUCTION.

The Museum of Modern Art Archives, NY	Collection:	Series.Folder:
	Valentin	VIII.B.168

Henry Moore

(see AC 91)

Reclining Figure

elmwood

6 feet 3 inches long
1945-1946

Coll:

FOR STUDY PURPOSES ONLY. NOT FOR REPRODUCTION.

The Museum of Modern Art Archives, NY	Collection:	Series.Folder:
	Valentin	VIII.B.168



FOR STUDY PURPOSES ONLY. NOT FOR REPRODUCTION.

The Museum of Modern Art Archives, NY	Collection:	Series.Folder:
	Valentin	VIII.B.168

Henry Moore

(see AC 91)

Reclining Figure
elmwood

6 feet 3 inches long
1945-1946

Coll:

FOR STUDY PURPOSES ONLY. NOT FOR REPRODUCTION.

The Museum of Modern Art Archives, NY	Collection:	Series.Folder:
	Valentin	VIII.B.168



FOR STUDY PURPOSES ONLY. NOT FOR REPRODUCTION.

The Museum of Modern Art Archives, NY	Collection:	Series.Folder:
	Valentin	VIII.B.168

Henry Moore

(see AC91)

Reclining Figure
elmwood

6 feet 3 inches long

FOR STUDY PURPOSES ONLY. NOT FOR REPRODUCTION.

The Museum of Modern Art Archives, NY	Collection:	Series.Folder:
	Valentin	VIII.B.168

1A23



FOR STUDY PURPOSES ONLY. NOT FOR REPRODUCTION.

The Museum of Modern Art Archives, NY	Collection:	Series.Folder:
	Valentin	VIII.B.168

AA 23 Sketch For Elmwood Figure 9311
(green) Bronze 6"L, 3½"H
Henry Moore 1945.46

Coll: Kleeemann Gallery. N.Y.C.

FOR STUDY PURPOSES ONLY. NOT FOR REPRODUCTION.

The Museum of Modern Art Archives, NY	Collection:	Series.Folder:
	Valentin	VIII.B.168

w 98



FOR STUDY PURPOSES ONLY. NOT FOR REPRODUCTION.

The Museum of Modern Art Archives, NY	Collection:	Series.Folder:
	Valentin	VIII.B.168

Henry Moore 8322 W98

Reclining Figure I (Small Version)

Bronze H. 3 1/2", L. 7"

1946

Coll: Mr. Leigh B. Block, Chicago

Mr. Joseph Hirschhorn

Mr. Mason Lord, Princeton

FOR STUDY PURPOSES ONLY. NOT FOR REPRODUCTION.

The Museum of Modern Art Archives, NY	Collection:	Series.Folder:
	Valentin	VIII.B.168

W 95



FOR STUDY PURPOSES ONLY. NOT FOR REPRODUCTION.

The Museum of Modern Art Archives, NY	Collection:	Series.Folder:
	Valentin	VIII.B.168

Henry Moore

10785

W95

Reclining Figure $3\frac{3}{4}$ inches high
7 " long

1946

green bronze

Coll: Mrs. Alice C. Spaulding (for Honolulu
Academy of Art) -8319

FOR STUDY PURPOSES ONLY. NOT FOR REPRODUCTION.

The Museum of Modern Art Archives, NY	Collection:	Series.Folder:
	Valentin	VIII.B.168



FOR STUDY PURPOSES ONLY. NOT FOR REPRODUCTION.

The Museum of Modern Art Archives, NY	Collection:	Series.Folder:
	Valentin	VIII.B.168

Henry Moore

7968

W47 (W46)

Family Group
bronze

17½ inches high
1946

Coll: Phillips Gallery, Washington
Morton Gallery, Palm Beach (7967)

FOR STUDY PURPOSES ONLY. NOT FOR REPRODUCTION.

The Museum of Modern Art Archives, NY	Collection:	Series.Folder:
	Valentin	VIII.B.168



FOR STUDY PURPOSES ONLY. NOT FOR REPRODUCTION.

The Museum of Modern Art Archives, NY	Collection:	Series.Folder:
	Valentin	VIII.B.168

Henry Moore

7967

W48 (W47)

Family Group
bronze

17½ inches high
1946

Coll: Norton Gallery, Palm Beach

Phillips Gallery, Washington

FOR STUDY PURPOSES ONLY. NOT FOR REPRODUCTION.

The Museum of Modern Art Archives, NY	Collection:	Series.Folder:
	Valentin	VIII.B.168

ALIS



FOR STUDY PURPOSES ONLY. NOT FOR REPRODUCTION.

The Museum of Modern Art Archives, NY	Collection:	Series.Folder:
	Valentin	VIII.B.168

AL15 11367

Study for Reclining Figure. 1946

Bronze 6" long

Henry Moore

Dr. Alfred Hentzen

Coll: ~~Dr. Charlotte M. Moore, San Francisco~~

Sturgis Indersoll (11935)
Walden School, ME (11556)

FOR STUDY PURPOSES ONLY. NOT FOR REPRODUCTION.

The Museum of Modern Art Archives, NY	Collection:	Series.Folder:
	Valentin	VIII.B.168

AL14



FOR STUDY PURPOSES ONLY. NOT FOR REPRODUCTION.

The Museum of Modern Art Archives, NY	Collection:	Series.Folder:
	Valentin	VIII.B.168

AL14

11868

Study for Battersea Park Figures. 1946

Bronze 8 7/8"H.

Henry Moore

Coll: Mrs. Stanley Resor, New York (11544)

Mrs. Charlotte Mack, San Francisco (11553)

Wadsworth Atheneum (11464)

Smith College (11433)

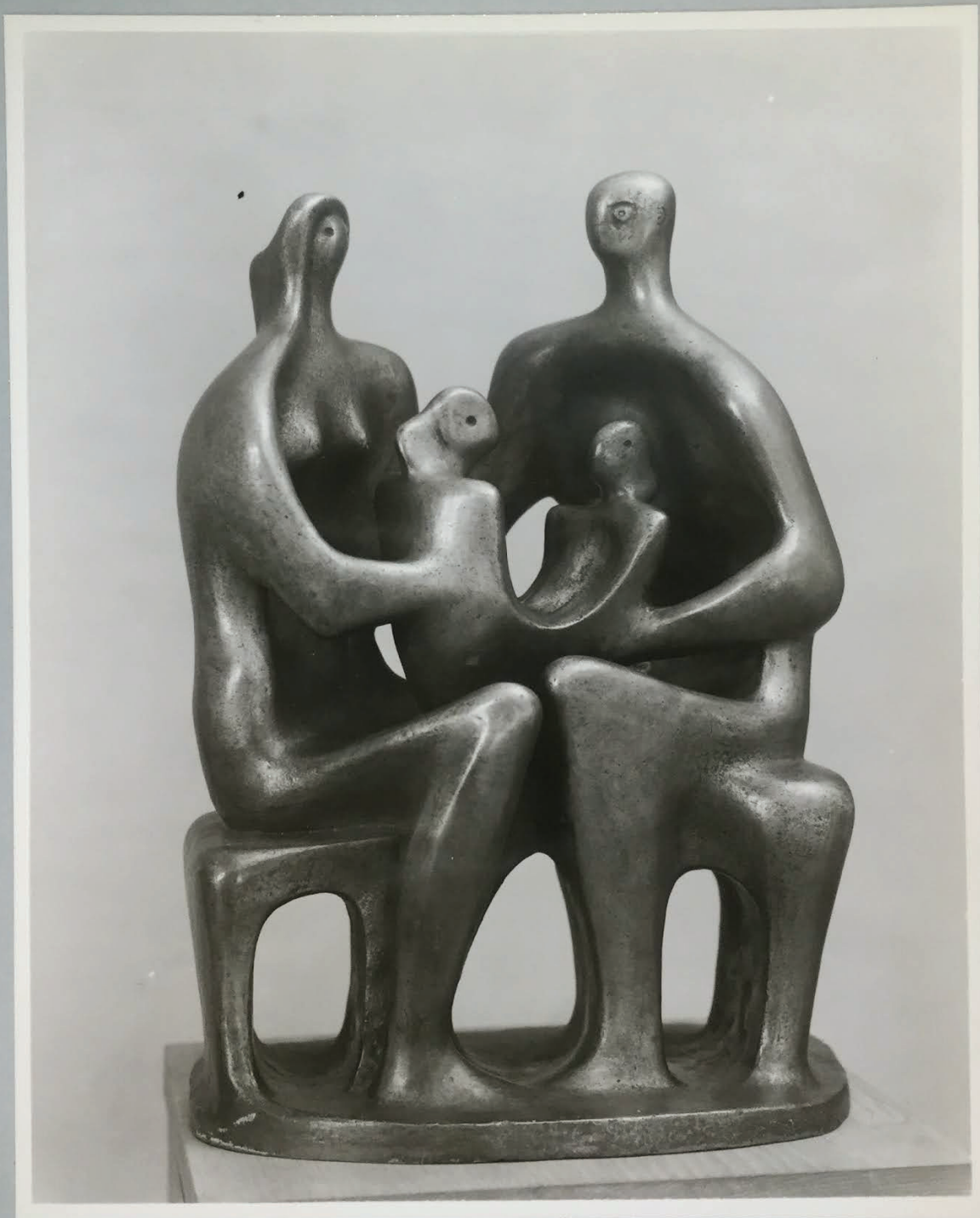
Nelson Rockefeller (11869)

(sr.) Walter Haas, San Francisco (12965)

FOR STUDY PURPOSES ONLY. NOT FOR REPRODUCTION.

The Museum of Modern Art Archives, NY	Collection:	Series.Folder:
	Valentin	VIII.B.168

AE67



FOR STUDY PURPOSES ONLY. NOT FOR REPRODUCTION.

The Museum of Modern Art Archives, NY	Collection:	Series.Folder:
	Valentin	VIII.B.168

AE67

10790

Henry Moore
Family Group. 1946
Bronze. 15½"H.

Coll: University of Nebraska

FOR STUDY PURPOSES ONLY. NOT FOR REPRODUCTION.

The Museum of Modern Art Archives, NY	Collection:	Series.Folder:
	Valentin	VIII.B.168



FOR STUDY PURPOSES ONLY. NOT FOR REPRODUCTION.

The Museum of Modern Art Archives, NY	Collection:	Series.Folder:
	Valentin	VIII.B.168

Henry Moore

7558

V34

Reclining Figure
bronze

7 inches high L.
1946

Coll: DILL ZELL HARTFIELD

FOR STUDY PURPOSES ONLY. NOT FOR REPRODUCTION.

The Museum of Modern Art Archives, NY	Collection:	Series.Folder:
	Valentin	VIII.B.168

AA25



FOR STUDY PURPOSES ONLY. NOT FOR REPRODUCTION.

The Museum of Modern Art Archives, NY	Collection:	Series.Folder:
	Valentin	VIII.B.168

AA 25

99314

Reclining Figure
Brown Hopton Stone 15"H, 27"L
Henry Moore 1947

Coll: Henry Hope

FOR STUDY PURPOSES ONLY. NOT FOR REPRODUCTION.

The Museum of Modern Art Archives, NY	Collection:	Series.Folder:
	Valentin	VIII.B.168



FOR STUDY PURPOSES ONLY. NOT FOR REPRODUCTION.

The Museum of Modern Art Archives, NY	Collection:	Series.Folder:
	Valentin	VIII.B.168

AA26



FOR STUDY PURPOSES ONLY. NOT FOR REPRODUCTION.

The Museum of Modern Art Archives, NY	Collection:	Series.Folder:
	Valentin	VIII.B.168

AA26

9314

Reclining Figure
Brown Hopton Stone 15"H 27"L
Henry Moore 1947

Coll: Mr. Henry Hope

FOR STUDY PURPOSES ONLY. NOT FOR REPRODUCTION.

The Museum of Modern Art Archives, NY	Collection:	Series.Folder:
	Valentin	VIII.B.168



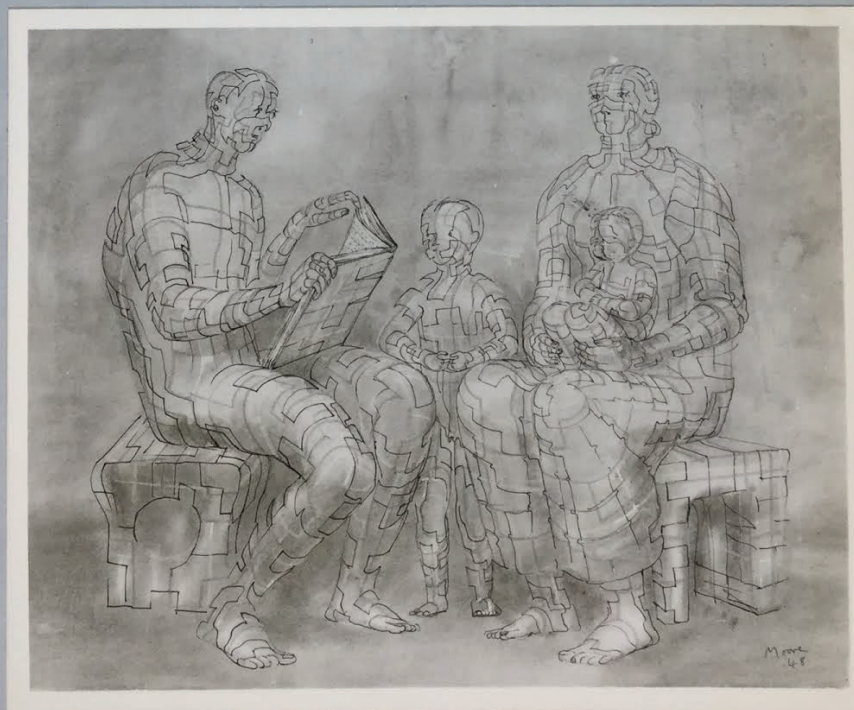
FOR STUDY PURPOSES ONLY. NOT FOR REPRODUCTION.

The Museum of Modern Art Archives, NY	Collection:	Series.Folder:
	Valentin	VIII.B.168



FOR STUDY PURPOSES ONLY. NOT FOR REPRODUCTION.

The Museum of Modern Art Archives, NY	Collection:	Series.Folder:
	Valentin	VIII.B.168



FOR STUDY PURPOSES ONLY. NOT FOR REPRODUCTION.

The Museum of Modern Art Archives, NY	Collection:	Series.Folder:
	Valentin	VIII.B.168

11212

AJ-7

Reclining Figure.
lead 5 1/4" L., 3 3/8" H.
Henry Moore

1948

Coll: William Wilder, Beverly Hills, Calif.

11209

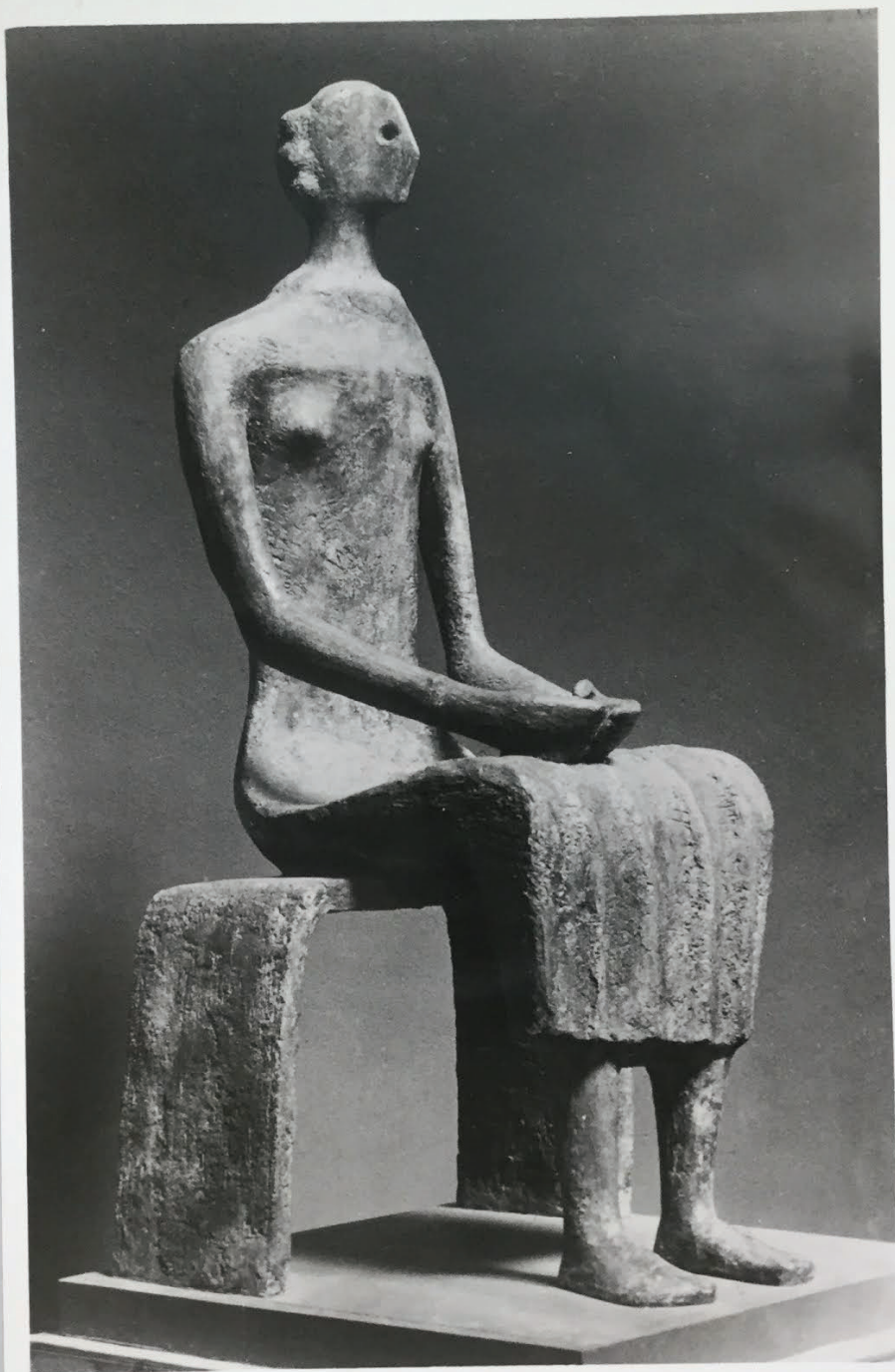
AJ-6

Family Group. 1948
chalk, ink, watercolor 22 x 27"
Henry Moore

Coll: Perls Gallery, Calif.

FOR STUDY PURPOSES ONLY. NOT FOR REPRODUCTION.

The Museum of Modern Art Archives, NY	Collection:	Series.Folder:
	Valentin	VIII.B.168



163B

FOR STUDY PURPOSES ONLY. NOT FOR REPRODUCTION.

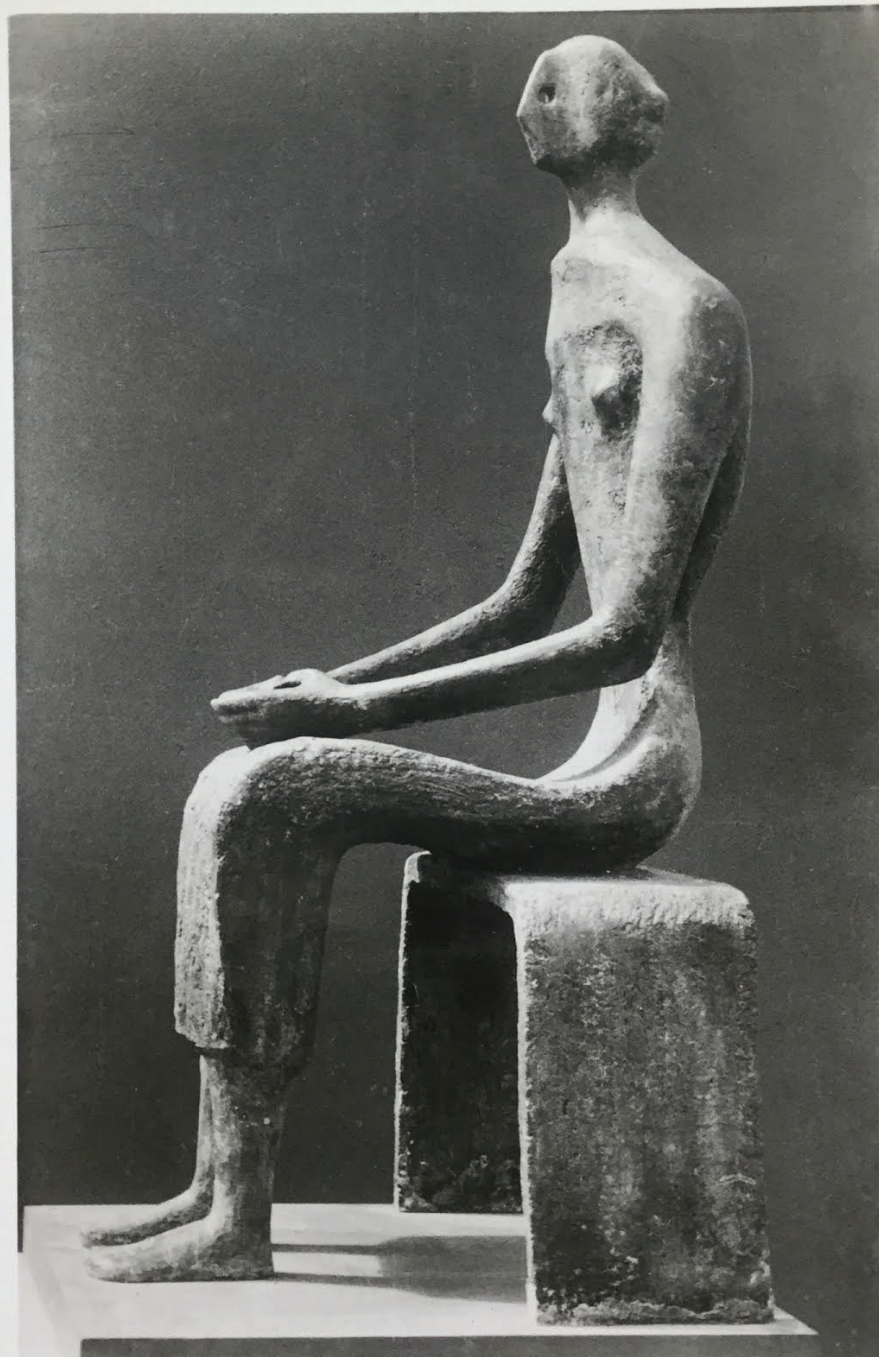
The Museum of Modern Art Archives, NY	Collection:	Series.Folder:
	Valentin	VIII.B.168

183B
B.E.81



FOR STUDY PURPOSES ONLY. NOT FOR REPRODUCTION.

The Museum of Modern Art Archives, NY	Collection:	Series.Folder:
	Valentin	VIII.B.168



3370

FOR STUDY PURPOSES ONLY. NOT FOR REPRODUCTION.

The Museum of Modern Art Archives, NY	Collection:	Series.Folder:
	Valentin	VIII.B.168

BE70, BE71

15785

Queen.

Terracotta H. $40\frac{1}{2}$ W. $18\frac{1}{4}$

Henry Moore 1953 L. $13\frac{1}{2}$ "

Coll: David Thompson