

## CONDITIONS OF USE FOR THIS PDF

The images contained within this PDF may be used for private study, scholarship, and research only. They may not be published in print, posted on the internet, or exhibited. They may not be donated, sold, or otherwise transferred to another individual or repository without the written permission of The Museum of Modern Art Archives.

When publication is intended, publication-quality images must be obtained from SCALA Group, the Museum's agent for licensing and distribution of images to outside publishers and researchers.

If you wish to quote any of this material in a publication, an application for permission to publish must be submitted to the MoMA Archives. This stipulation also applies to dissertations and theses. All references to materials should cite the archival collection and folder, and acknowledge "The Museum of Modern Art Archives, New York."

Whether publishing an image or quoting text, you are responsible for obtaining any consents or permissions which may be necessary in connection with any use of the archival materials, including, without limitation, any necessary authorizations from the copyright holder thereof or from any individual depicted therein.

In requesting and accepting this reproduction, you are agreeing to indemnify and hold harmless The Museum of Modern Art, its agents and employees against all claims, demands, costs and expenses incurred by copyright infringement or any other legal or regulatory cause of action arising from the use of this material.

### **NOTICE: WARNING CONCERNING COPYRIGHT RESTRICTIONS**

The copyright law of the United States (Title 17, United States Code) governs the making of photocopies or other reproductions of copyrighted material. Under certain conditions specified in the law, libraries and archives are authorized to furnish a photocopy or other reproduction. One of these specified conditions is that the photocopy or reproduction is not to be "used for any purpose other than private study, scholarship, or research." If a user makes a request for, or later uses, a photocopy or reproduction for purposes in excess of "fair use," that user may be liable for copyright infringement.

FOR STUDY PURPOSES ONLY. NOT FOR REPRODUCTION.

The Museum of Modern Art Archives, NY	Collection:	Series.Folder:
	Valentin	VIII.B.165



AB97



FOR STUDY PURPOSES ONLY. NOT FOR REPRODUCTION.

The Museum of Modern Art Archives, NY	Collection:	Series.Folder:
	Valentin	VIII.B.165

AB97





FOR STUDY PURPOSES ONLY. NOT FOR REPRODUCTION.

The Museum of Modern Art Archives, NY	Collection:	Series.Folder:
	Valentin	VIII.B.165

AB-97

10175

Henry Moore  
Seated Family with Book.  
Bronze. 7 $\frac{1}{4}$ "H - 5 $\frac{1}{4}$ "L.

1944

Coll: Miss Isabelle Woolford, Georgia



FOR STUDY PURPOSES ONLY. NOT FOR REPRODUCTION.

The Museum of Modern Art Archives, NY	Collection:	Series.Folder:
	Valentin	VIII.B.165





FOR STUDY PURPOSES ONLY. NOT FOR REPRODUCTION.

The Museum of Modern Art Archives, NY	Collection:	Series.Folder:
	Valentin	VIII.B.165

return to Buchholz

Henry Moore 7559 V29

Family Group  
bronze 9 3/4 " high  
1945

Coll: Wright Ludington, Santa Barbara

John S. Newberry, Jr. (8323)  
M.O. M.A.

John Rood, Minn. (10624)  
Bully Wilcox, Calif. (9050)



FOR STUDY PURPOSES ONLY. NOT FOR REPRODUCTION.

The Museum of Modern Art Archives, NY	Collection:	Series.Folder:
	Valentin	VIII.B.165





FOR STUDY PURPOSES ONLY. NOT FOR REPRODUCTION.

The Museum of Modern Art Archives, NY	Collection:	Series.Folder:
	Valentin	VIII.B.165

AC91

13469  
9862  
Reclining Figure. 1945-46  
elmwood 6' 3" L., 22" W., 33" H.  
Henry Moore

Coll: Cranbrook Academy



FOR STUDY PURPOSES ONLY. NOT FOR REPRODUCTION.

The Museum of Modern Art Archives, NY	Collection:	Series.Folder:
	Valentin	VIII.B.165

AM70





FOR STUDY PURPOSES ONLY. NOT FOR REPRODUCTION.

The Museum of Modern Art Archives, NY	Collection:	Series.Folder:
	Valentin	VIII.B.165

AM70

11679

Reclining Figure. 1949-50

Hopton-wood stone 20"H 30"L

Henry Moore

Coll: Sturgis Ingersoll



FOR STUDY PURPOSES ONLY. NOT FOR REPRODUCTION.

The Museum of Modern Art Archives, NY	Collection:	Series.Folder:
	Valentin	VIII.B.165



AM93



FOR STUDY PURPOSES ONLY. NOT FOR REPRODUCTION.

The Museum of Modern Art Archives, NY	Collection:	Series.Folder:
	Valentin	VIII.B.165

AM70

11679

Reclining Figure. 1949-50  
Hopton-wood Stone 20"H.  
Henry Moore

Coll: R. Sturgis Ingersoll



FOR STUDY PURPOSES ONLY. NOT FOR REPRODUCTION.

The Museum of Modern Art Archives, NY	Collection:	Series.Folder:
	Valentin	VIII.B.165

408





FOR STUDY PURPOSES ONLY. NOT FOR REPRODUCTION.

The Museum of Modern Art Archives, NY	Collection:	Series.Folder:
	Valentin	VIII.B.165

A08

12237

Basket Head. 1950  
lead 5 3/4"H.  
Henry Moore

Coll:



FOR STUDY PURPOSES ONLY. NOT FOR REPRODUCTION.

The Museum of Modern Art Archives, NY	Collection:	Series.Folder:
	Valentin	VIII.B.165



8407



FOR STUDY PURPOSES ONLY. NOT FOR REPRODUCTION.

The Museum of Modern Art Archives, NY	Collection:	Series.Folder:
	Valentin	VIII.B.165

A028

11937

Helmet. 1950  
Bronze 4½"H.  
Henry Moore

Coll:



FOR STUDY PURPOSES ONLY. NOT FOR REPRODUCTION.

The Museum of Modern Art Archives, NY	Collection:	Series.Folder:
	Valentin	VIII.B.165



AP6U



FOR STUDY PURPOSES ONLY. NOT FOR REPRODUCTION.

The Museum of Modern Art Archives, NY	Collection:	Series.Folder:
	Valentin	VIII.B.165



3044  
1-1  
EE1

# 26

AP64

12530

Head. 1950  
Bronze 15"H.  
Henry Moore

Coll:



FOR STUDY PURPOSES ONLY. NOT FOR REPRODUCTION.

The Museum of Modern Art Archives, NY	Collection:	Series.Folder:
	Valentin	VIII.B.165

AR76





FOR STUDY PURPOSES ONLY. NOT FOR REPRODUCTION.

The Museum of Modern Art Archives, NY	Collection:	Series.Folder:
	Valentin	VIII.B.165

AR76

12843

Helmet. 1950  
Lead 15½" H.  
Henry Moore

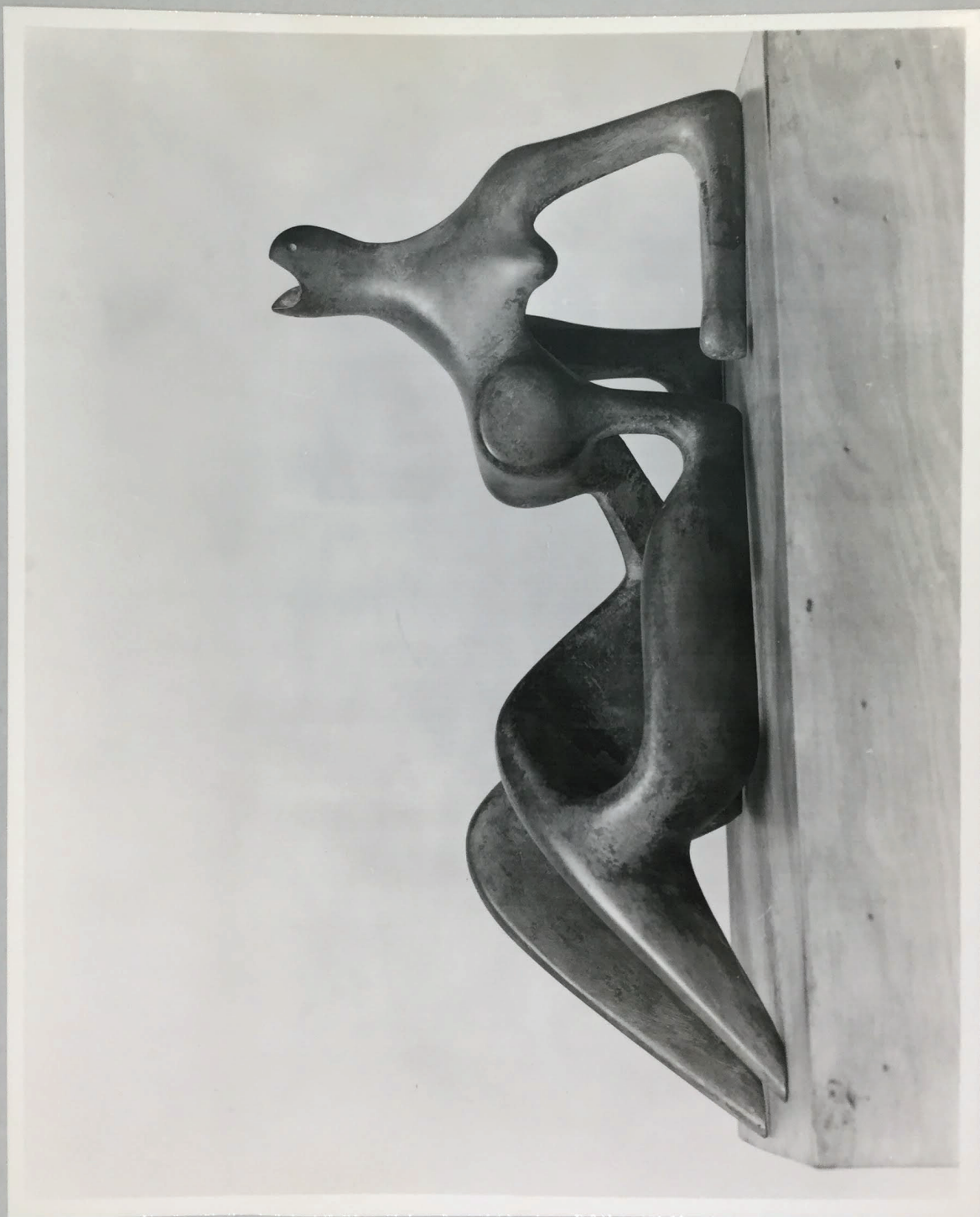
Coll: returned to artist 5/54



FOR STUDY PURPOSES ONLY. NOT FOR REPRODUCTION.

The Museum of Modern Art Archives, NY	Collection:	Series.Folder:
	Valentin	VIII.B.165

AR77





FOR STUDY PURPOSES ONLY. NOT FOR REPRODUCTION.

The Museum of Modern Art Archives, NY	Collection:	Series.Folder:
	Valentin	VIII.B.165

AR77

12844

Reclining Figure. 1950  
Bronze L.17 $\frac{1}{2}$ " H.8 $\frac{1}{4}$ "  
Henry Moore

Coll: J. Steinberg, Chicago

Benjamin Katz, Philadelphia - #12928



FOR STUDY PURPOSES ONLY. NOT FOR REPRODUCTION.

The Museum of Modern Art Archives, NY	Collection:	Series.Folder:
	Valentin	VIII.B.165

*Moore - Sculpture*





FOR STUDY PURPOSES ONLY. NOT FOR REPRODUCTION.

The Museum of Modern Art Archives, NY	Collection:	Series.Folder:
	Valentin	VIII.B.165

V68

Henry Moore

Reclining Figure  
alabaster

18 inches high  
1929

Coll: Mrs. Lucy Wertheim, London



FOR STUDY PURPOSES ONLY. NOT FOR REPRODUCTION.

The Museum of Modern Art Archives, NY	Collection:	Series.Folder:
	Valentin	VIII.B.165





FOR STUDY PURPOSES ONLY. NOT FOR REPRODUCTION.

The Museum of Modern Art Archives, NY	Collection:	Series.Folder:
	Valentin	VIII.B.165

AP40

Figure. 1950  
Bronze H. 7' 3"  
Henry Moore

12474  
(15134)

Coll: J. Satter, North Rose, N.Y.

Edgar Kaufmann



FOR STUDY PURPOSES ONLY. NOT FOR REPRODUCTION.

The Museum of Modern Art Archives, NY	Collection:	Series.Folder:
	Valentin	VIII.B.165

AP39





FOR STUDY PURPOSES ONLY. NOT FOR REPRODUCTION.

The Museum of Modern Art Archives, NY	Collection:	Series.Folder:
	Valentin	VIII.B.165

AP39

Figure. 1950  
Bronze H. 7' 3"  
Henry Moore

12474

(15134)

Coll: J. Salter, North Rose, N.Y.



FOR STUDY PURPOSES ONLY. NOT FOR REPRODUCTION.

The Museum of Modern Art Archives, NY	Collection:	Series.Folder:
	Valentin	VIII.B.165

AP66





FOR STUDY PURPOSES ONLY. NOT FOR REPRODUCTION.

The Museum of Modern Art Archives, NY	Collection:	Series.Folder:
	Valentin	VIII.B.165

AP66

12526

Rocking Chair II. 1950  
Bronze 11"H.  
Henry Moore

Coll: Joseph Hirshhorn, NYC  
Leigh Block, Chicago - #12962  
A.L. Mills, Portland - #12961



FOR STUDY PURPOSES ONLY. NOT FOR REPRODUCTION.

The Museum of Modern Art Archives, NY	Collection:	Series.Folder:
	Valentin	VIII.B.165

AP67





FOR STUDY PURPOSES ONLY. NOT FOR REPRODUCTION.

The Museum of Modern Art Archives, NY	Collection:	Series.Folder:
	Valentin	VIII.B.165

AP67

12525

Rocking Chair I. 1950  
Bronze 12 $\frac{1}{2}$ "H.  
Henry Moore

Coll:

Nelson Rockefeller, NYC  
Frederick Morgan, NYC - #12960  
Marcus Rice, St. Louis - #1295A



FOR STUDY PURPOSES ONLY. NOT FOR REPRODUCTION.

The Museum of Modern Art Archives, NY	Collection:	Series.Folder:
	Valentin	VIII.B.165

AP62





FOR STUDY PURPOSES ONLY. NOT FOR REPRODUCTION.

The Museum of Modern Art Archives, NY	Collection:	Series.Folder:
	Valentin	VIII.B.165

AP62 12527

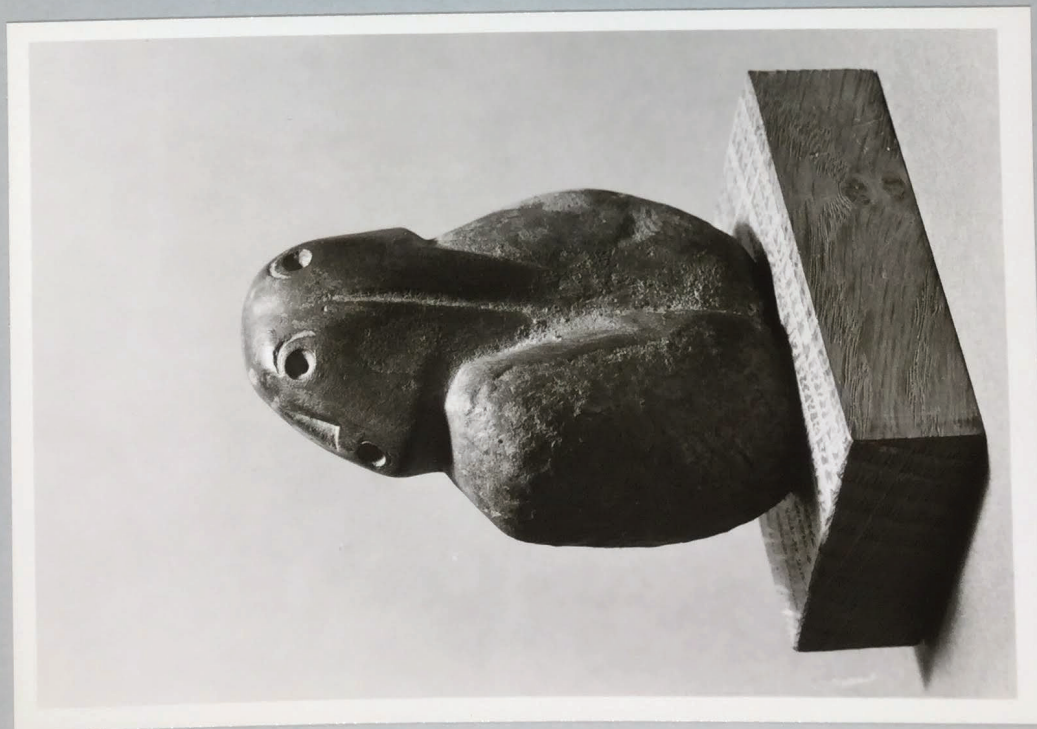
Rocking Chair III. 1950  
Bronze 12 $\frac{1}{2}$ "H.  
Henry Moore

Coll: Morton D. May, St. Louis - #12963  
Mrs. Sidney Brody, Los Angeles - #12964  
A. Blum, Riverdale, N.Y. - #12964



FOR STUDY PURPOSES ONLY. NOT FOR REPRODUCTION.

The Museum of Modern Art Archives, NY	Collection:	Series.Folder:
	Valentin	VIII.B.165





FOR STUDY PURPOSES ONLY. NOT FOR REPRODUCTION.

The Museum of Modern Art Archives, NY	Collection:	Series.Folder:
	Valentin	VIII.B.165

AE-11  
Henry Moore  
Chalk Stone Head of Bronze.  
Bronze.  $4\frac{3}{4}$ "H. 4"W.

10631

1951?

Coll:

AE12  
Henry Moore  
Double Headed Bronze.  
Bronze.  $3\frac{1}{2}$ "H.  $2\frac{1}{2}$ "W.

10630

1951?

Coll:



FOR STUDY PURPOSES ONLY. NOT FOR REPRODUCTION.

The Museum of Modern Art Archives, NY	Collection:	Series.Folder:
	Valentin	VIII.B.165





FOR STUDY PURPOSES ONLY. NOT FOR REPRODUCTION.

The Museum of Modern Art Archives, NY	Collection:	Series.Folder:
	Valentin	VIII.B.165

AS49

12599

Head. 1950  
Bronze H.5 3/4"  
Henry Moore

Coll:



FOR STUDY PURPOSES ONLY. NOT FOR REPRODUCTION.

The Museum of Modern Art Archives, NY	Collection:	Series.Folder:
	Valentin	VIII.B.165



AS3



72  
FOR STUDY PURPOSES ONLY. NOT FOR REPRODUCTION.

The Museum of Modern Art Archives, NY	Collection:	Series.Folder:
	Valentin	VIII.B.165

AS-3 Henry Moore Exhibition, March 1951



FOR STUDY PURPOSES ONLY. NOT FOR REPRODUCTION.

The Museum of Modern Art Archives, NY	Collection:	Series.Folder:
	Valentin	VIII.B.165





FOR STUDY PURPOSES ONLY. NOT FOR REPRODUCTION.

The Museum of Modern Art Archives, NY	Collection:	Series.Folder:
	Valentin	VIII.B.165

AS-2 Henry Moore Exhibition, March 1951



FOR STUDY PURPOSES ONLY. NOT FOR REPRODUCTION.

The Museum of Modern Art Archives, NY	Collection:	Series.Folder:
	Valentin	VIII.B.165



AS 1



FOR STUDY PURPOSES ONLY. NOT FOR REPRODUCTION.

The Museum of Modern Art Archives, NY	Collection:	Series.Folder:
	Valentin	VIII.B.165

AS-1 Henry Moore Exhibition, March 1951



FOR STUDY PURPOSES ONLY. NOT FOR REPRODUCTION.

The Museum of Modern Art Archives, NY	Collection:	Series.Folder:
	Valentin	VIII.B.165



AR100



FOR STUDY PURPOSES ONLY. NOT FOR REPRODUCTION.

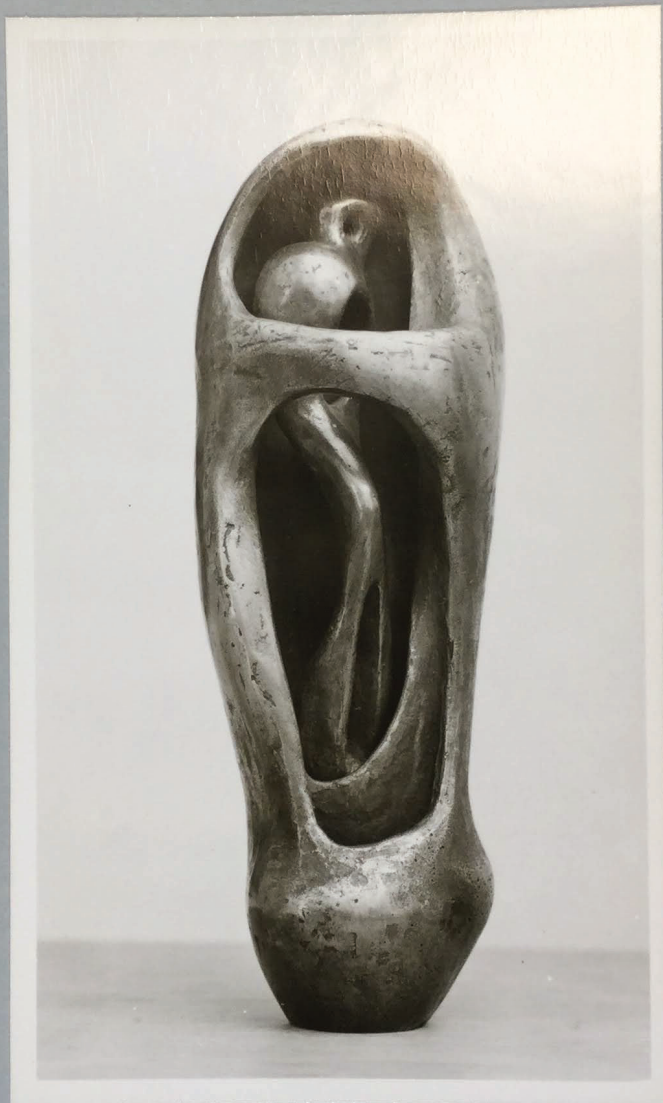
The Museum of Modern Art Archives, NY	Collection:	Series.Folder:
	Valentin	VIII.B.165

AR100 Henry Moore Exhibition, March 1951



FOR STUDY PURPOSES ONLY. NOT FOR REPRODUCTION.

The Museum of Modern Art Archives, NY	Collection:	Series.Folder:
	Valentin	VIII.B.165



AV 32

U



FOR STUDY PURPOSES ONLY. NOT FOR REPRODUCTION.

The Museum of Modern Art Archives, NY	Collection:	Series.Folder:
	Valentin	VIII.B.165

AV32

13514

Study for Interior and Exterior Forms.

1951. Bronze. H.  $8\frac{1}{4}$ "

Henry Moore

Coll: Mrs. Roberta Alford, Providence



FOR STUDY PURPOSES ONLY. NOT FOR REPRODUCTION.

The Museum of Modern Art Archives, NY	Collection:	Series.Folder:
	Valentin	VIII.B.165





FOR STUDY PURPOSES ONLY. NOT FOR REPRODUCTION.

The Museum of Modern Art Archives, NY	Collection:	Series.Folder:
	Valentin	VIII.B.165

AV-6

Interior and Exterior Forms.

1951. Bronze. H.25"

Henry Moore

Coll: R.I. School of Design, Providence

13513



FOR STUDY PURPOSES ONLY. NOT FOR REPRODUCTION.

The Museum of Modern Art Archives, NY	Collection:	Series.Folder:
	Valentin	VIII.B.165

*Moore - Sculpture*





FOR STUDY PURPOSES ONLY. NOT FOR REPRODUCTION.

The Museum of Modern Art Archives, NY	Collection:	Series.Folder:
	Valentin	VIII.B.165

Henry Moore

7614

V52

Horse  
bronze

4 $\frac{1}{4}$  inches high  
1922

Coll: Frederick Zimmermann, New York City



FOR STUDY PURPOSES ONLY. NOT FOR REPRODUCTION.

The Museum of Modern Art Archives, NY	Collection:	Series.Folder:
	Valentin	VIII.B.165



A 035



FOR STUDY PURPOSES ONLY. NOT FOR REPRODUCTION.

The Museum of Modern Art Archives, NY	Collection:	Series.Folder:
	Valentin	VIII.B.165

AW35 13665  
Study for Standing Figure. 1951  
bronze H.10"  
Henry Moore

Coll:



FOR STUDY PURPOSES ONLY. NOT FOR REPRODUCTION.

The Museum of Modern Art Archives, NY	Collection:	Series.Folder:
	Valentin	VIII.B.165

AW31





FOR STUDY PURPOSES ONLY. NOT FOR REPRODUCTION.

The Museum of Modern Art Archives, NY	Collection:	Series.Folder:
	Valentin	VIII.B.165

AW31

Animal Head. 1951  
bronze H. 7 $\frac{1}{2}$ "  
Henry Moore

13664

Coll:



FOR STUDY PURPOSES ONLY. NOT FOR REPRODUCTION.

The Museum of Modern Art Archives, NY	Collection:	Series.Folder:
	Valentin	VIII.B.165

AY-54





FOR STUDY PURPOSES ONLY. NOT FOR REPRODUCTION.

The Museum of Modern Art Archives, NY	Collection:	Series.Folder:
	Valentin	VIII.B.165

AY54 14398  
Interior Exterior Reclining Figure.  
1951 Bronze H.13 $\frac{1}{2}$  L.20"  
Henry Moore

Coll: Earle Ludgin, Chicago

L.T. Salter, North Rose, N. Y. - \*14609

Joseph Hirschhorn



FOR STUDY PURPOSES ONLY. NOT FOR REPRODUCTION.

The Museum of Modern Art Archives, NY	Collection:	Series.Folder:
	Valentin	VIII.B.165

AX19





FOR STUDY PURPOSES ONLY. NOT FOR REPRODUCTION.

The Museum of Modern Art Archives, NY	Collection:	Series.Folder:
	Valentin	VIII.B.165

AX19

14089

Three Standing Figures.

1952 Bronze H.10"

Henry Moore

Coll: Mr. G. David Thompson, Pittsburgh - # 14090

A.D. Emil, New York



FOR STUDY PURPOSES ONLY. NOT FOR REPRODUCTION.

The Museum of Modern Art Archives, NY	Collection:	Series.Folder:
	Valentin	VIII.B.165

AX20





FOR STUDY PURPOSES ONLY. NOT FOR REPRODUCTION.

The Museum of Modern Art Archives, NY	Collection:	Series.Folder:
	Valentin	VIII.B.165

AX20

King and Queen. 1952  
Bronze H.10 $\frac{1}{2}$ "  
Henry Moore

14094

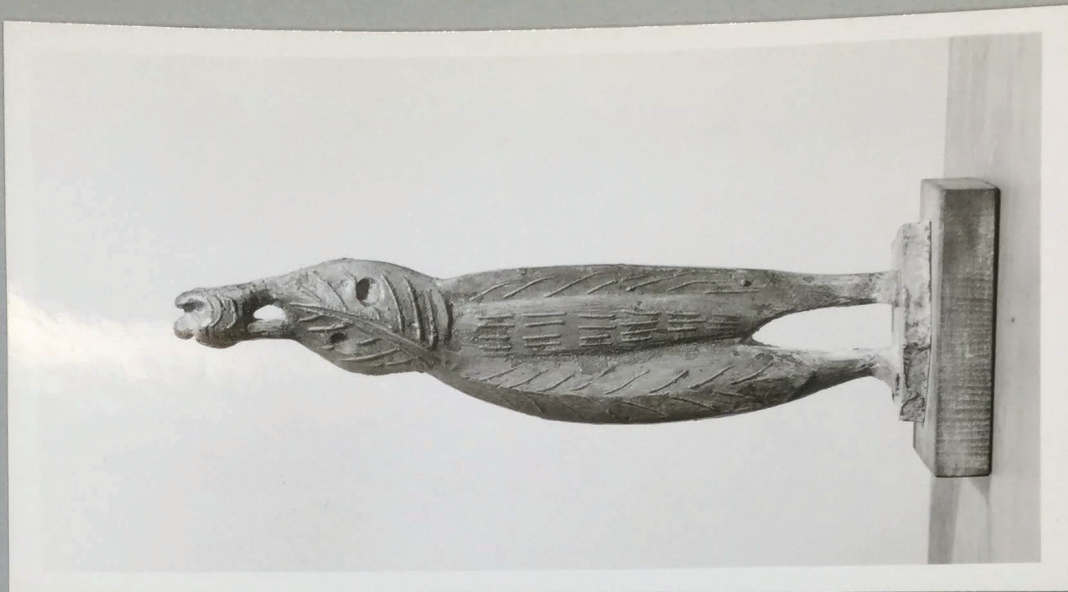
Coll: Mr. John Rood, Minneapolis  
Mr. Nelson Rockefeller, NYC - #14095  
Mr. Robert Haas, NYC - #14393



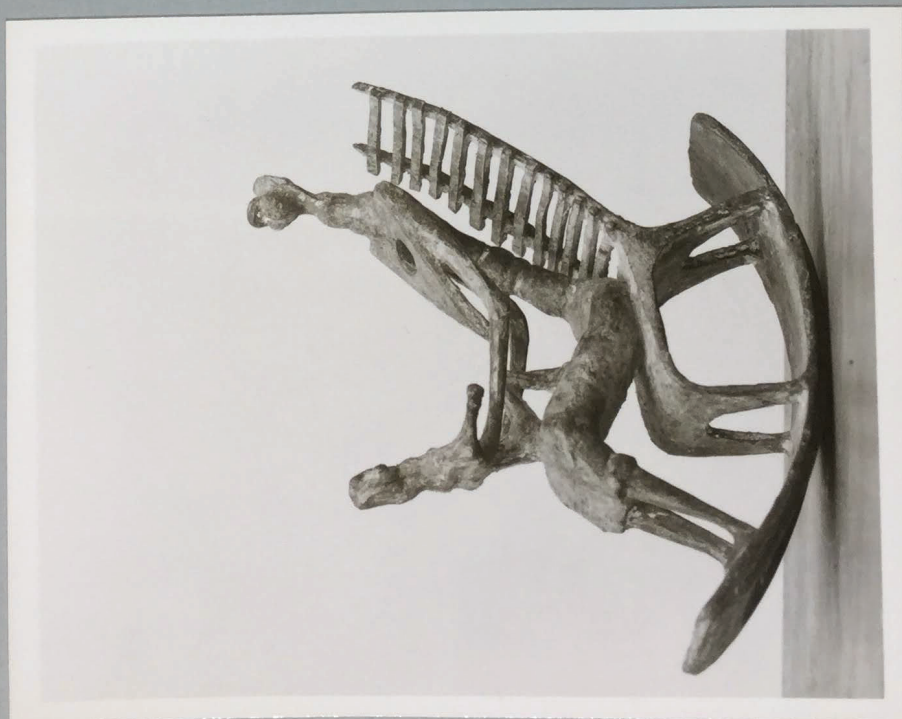
FOR STUDY PURPOSES ONLY. NOT FOR REPRODUCTION.

The Museum of Modern Art Archives, NY	Collection:	Series.Folder:
	Valentin	VIII.B.165

AX22



AX21





FOR STUDY PURPOSES ONLY. NOT FOR REPRODUCTION.

The Museum of Modern Art Archives, NY	Collection:	Series.Folder:
	Valentin	VIII.B.165

AX22 14096  
Leaf Figure. 1952  
Bronze H.9 $\frac{3}{4}$ "  
Henry Moore

Coll:

AX21 14091  
Mother and Child in Ladderback Rocker.  
1952 Bronze H.3"  
Henry Moore

Coll: Saul Rosen, Paterson, N.J.

Peaks Gallery, Calif. - #14092

G. David Thompson - #14392

Albert List, Conn. - #14602

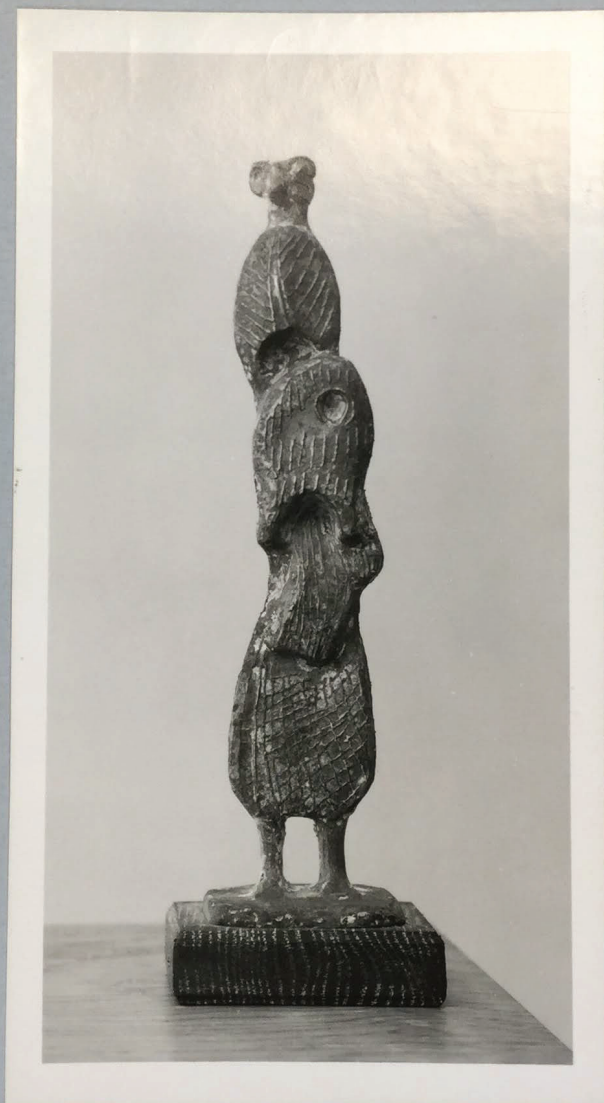
Mrs. H.J. Heinz, Pittsburgh - #15475



FOR STUDY PURPOSES ONLY. NOT FOR REPRODUCTION.

The Museum of Modern Art Archives, NY	Collection:	Series.Folder:
	Valentin	VIII.B.165

AY-58





FOR STUDY PURPOSES ONLY. NOT FOR REPRODUCTION.

The Museum of Modern Art Archives, NY	Collection:	Series.Folder:
	Valentin	VIII.B.165

AY58

Leaf Figure II. 1952  
bronze H.9½"  
Henry Moore

14399

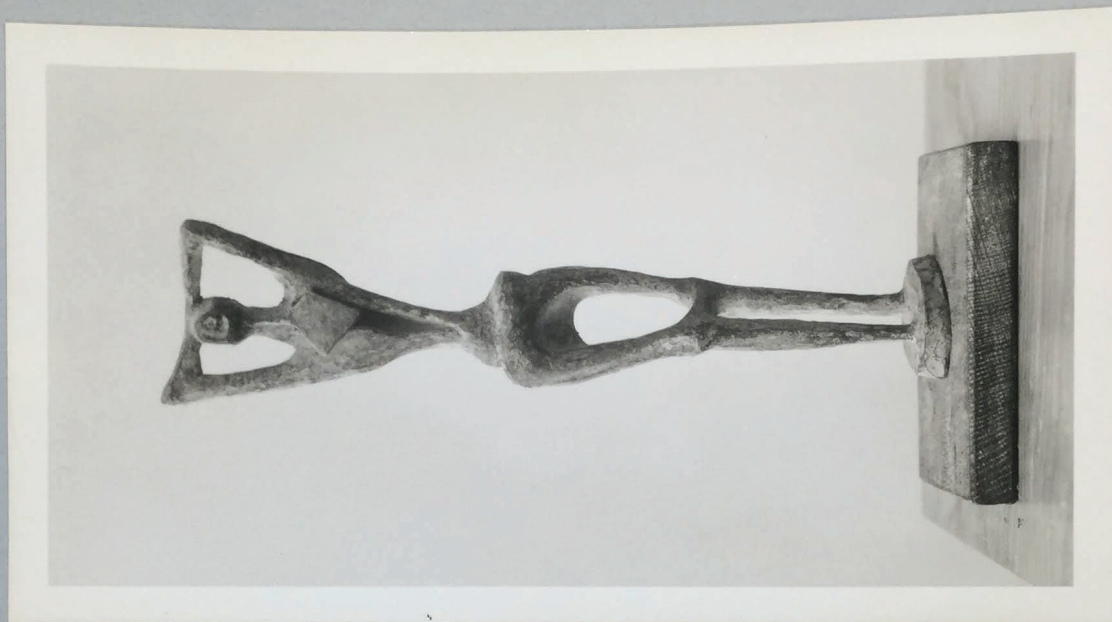
Coll:



FOR STUDY PURPOSES ONLY. NOT FOR REPRODUCTION.

The Museum of Modern Art Archives, NY	Collection:	Series.Folder:
	Valentin	VIII.B.165

AY-59



AY-60





FOR STUDY PURPOSES ONLY. NOT FOR REPRODUCTION.

The Museum of Modern Art Archives, NY	Collection:	Series.Folder:
	Valentin	VIII.B.165

AY59

Bone Standing Figure.  
bronze H.9 3/4"  
Henry Moore

1952

14402

Coll:

AY60

Standing Figure (Bib) 1952  
bronze H.8 1/4"  
Henry Moore

14403

Coll:



FOR STUDY PURPOSES ONLY. NOT FOR REPRODUCTION.

The Museum of Modern Art Archives, NY	Collection:	Series.Folder:
	Valentin	VIII.B.165

AY-56





FOR STUDY PURPOSES ONLY. NOT FOR REPRODUCTION.

The Museum of Modern Art Archives, NY	Collection:	Series.Folder:
	Valentin	VIII.B.165

AY56

Mother and Child. 1952  
bronze H.  $8\frac{1}{4}$ "  
Henry Moore

14394

Coll:



FOR STUDY PURPOSES ONLY. NOT FOR REPRODUCTION.

The Museum of Modern Art Archives, NY	Collection:	Series.Folder:
	Valentin	VIII.B.165

AY-55





FOR STUDY PURPOSES ONLY. NOT FOR REPRODUCTION.

The Museum of Modern Art Archives, NY	Collection:	Series.Folder:
	Valentin	VIII.B.165

AY55 14400  
Mother and Child in Ladderback Chair.  
1952 Bronze H.15 3/4"  
Henry Moore

Coll:



FOR STUDY PURPOSES ONLY. NOT FOR REPRODUCTION.

The Museum of Modern Art Archives, NY	Collection:	Series.Folder:
	Valentin	VIII.B.165

AY-53





FOR STUDY PURPOSES ONLY. NOT FOR REPRODUCTION.

The Museum of Modern Art Archives, NY	Collection:	Series.Folder:
	Valentin	VIII.B.165

AY53

Seated Figure. 1952  
bronze H.8"  
Henry Moore

14397

Coll: Mr. Albert List, Conn.

Mrs. Sydney Shoenberg, St. Louis.



FOR STUDY PURPOSES ONLY. NOT FOR REPRODUCTION.

The Museum of Modern Art Archives, NY	Collection:	Series.Folder:
	Valentin	VIII.B.165

AY-52





FOR STUDY PURPOSES ONLY. NOT FOR REPRODUCTION.

The Museum of Modern Art Archives, NY	Collection:	Series.Folder:
	Valentin	VIII.B.165

AY52

Helmet Head. 1952  
bronze H. 6 $\frac{1}{2}$ "  
Henry Moore

14395

Coll:



FOR STUDY PURPOSES ONLY. NOT FOR REPRODUCTION.

The Museum of Modern Art Archives, NY	Collection:	Series.Folder:
	Valentin	VIII.B.165

BA-18



BA-17





FOR STUDY PURPOSES ONLY. NOT FOR REPRODUCTION.

The Museum of Modern Art Archives, NY	Collection:	Series.Folder:
	Valentin	VIII.B.165

BA18

Reclining Figure (Pearl 1).  
1952. Bronze. L.8"  
Henry Moore

14606

Coll:

BA17

Reclining Figure (Pearl 2). 1952  
Bronze L.9 $\frac{1}{4}$ "  
Henry Moore

14605

Coll: G. David Thompson, Pittsburgh



FOR STUDY PURPOSES ONLY. NOT FOR REPRODUCTION.

The Museum of Modern Art Archives, NY	Collection:	Series.Folder:
	Valentin	VIII.B.165

BA-16



BA-15





FOR STUDY PURPOSES ONLY. NOT FOR REPRODUCTION.

The Museum of Modern Art Archives, NY	Collection:	Series.Folder:
	Valentin	VIII.B.165

BA16

Relief Head. 1952  
bronze 4 x 4 $\frac{1}{2}$ "  
Henry Moore

14603

Coll:

BA15

Relief Head and Neck. 1952  
bronze 4 $\frac{1}{2}$  x 4"  
Henry Moore

14604

Coll:



FOR STUDY PURPOSES ONLY. NOT FOR REPRODUCTION.

The Museum of Modern Art Archives, NY	Collection:	Series.Folder:
	Valentin	VIII.B.165



BDS



FOR STUDY PURPOSES ONLY. NOT FOR REPRODUCTION.

The Museum of Modern Art Archives, NY	Collection:	Series.Folder:
	Valentin	VIII.B.165

BD-5

Hands. 1953  
bronze L.5 $\frac{1}{2}$ "  
Henry Moore

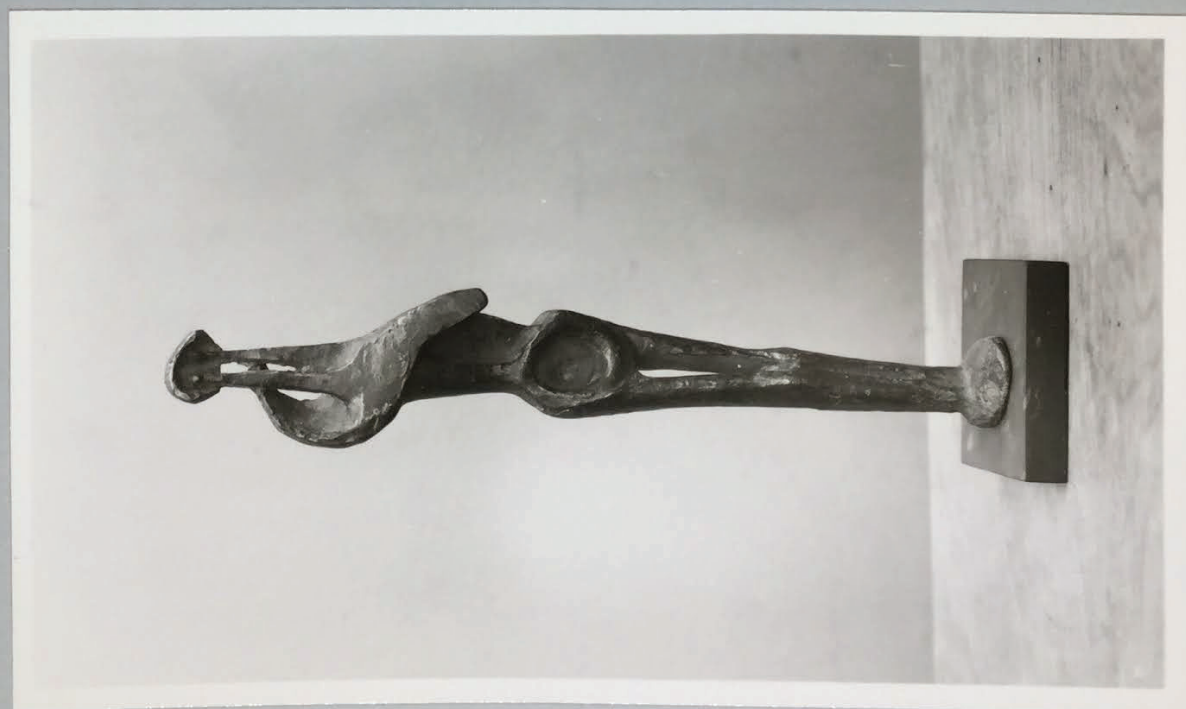
15471

Coll: W. LUDINGTON



FOR STUDY PURPOSES ONLY. NOT FOR REPRODUCTION.

The Museum of Modern Art Archives, NY	Collection:	Series.Folder:
	Valentin	VIII.B.165





FOR STUDY PURPOSES ONLY. NOT FOR REPRODUCTION.

The Museum of Modern Art Archives, NY	Collection:	Series.Folder:
	Valentin	VIII.B.165

BD-2

Warrior with Shield. 1953  
bronze H.7 $\frac{3}{4}$ "  
Henry Moore

15472

Coll: J. W. Alsdorf, Chicago

BD-4

Standing Figure. 1953  
bronze H.10 $\frac{3}{4}$ "  
Henry Moore

15476

Coll: