

## CONDITIONS OF USE FOR THIS PDF

The images contained within this PDF may be used for private study, scholarship, and research only. They may not be published in print, posted on the internet, or exhibited. They may not be donated, sold, or otherwise transferred to another individual or repository without the written permission of The Museum of Modern Art Archives.

When publication is intended, publication-quality images must be obtained from SCALA Group, the Museum's agent for licensing and distribution of images to outside publishers and researchers.

If you wish to quote any of this material in a publication, an application for permission to publish must be submitted to the MoMA Archives. This stipulation also applies to dissertations and theses. All references to materials should cite the archival collection and folder, and acknowledge "The Museum of Modern Art Archives, New York."

Whether publishing an image or quoting text, you are responsible for obtaining any consents or permissions which may be necessary in connection with any use of the archival materials, including, without limitation, any necessary authorizations from the copyright holder thereof or from any individual depicted therein.

In requesting and accepting this reproduction, you are agreeing to indemnify and hold harmless The Museum of Modern Art, its agents and employees against all claims, demands, costs and expenses incurred by copyright infringement or any other legal or regulatory cause of action arising from the use of this material.

### **NOTICE: WARNING CONCERNING COPYRIGHT RESTRICTIONS**

The copyright law of the United States (Title 17, United States Code) governs the making of photocopies or other reproductions of copyrighted material. Under certain conditions specified in the law, libraries and archives are authorized to furnish a photocopy or other reproduction. One of these specified conditions is that the photocopy or reproduction is not to be "used for any purpose other than private study, scholarship, or research." If a user makes a request for, or later uses, a photocopy or reproduction for purposes in excess of "fair use," that user may be liable for copyright infringement.



FOR STUDY PURPOSES ONLY. NOT FOR REPRODUCTION.

The Museum of Modern Art Archives, NY

Collection:

Valentin

Series.Folder:

VIII.B.161

*Moore - drawings*





The Museum of Modern Art Archives, NY	Collection:	Series.Folder:
	Valentin	VIII.B.161

Henry Moore

T97

Three Family Groups. Skb.

wc. cry. ink 6 5/8 x 9  
1943

Coll: Mrs. Benjamin Watson, New York City

Henry Moore

T98

Two Sketches for Family Group. Skb.

wc. cry. ink 6 5/8 x 9  
1944

Coll: Dr. Evans, Chicago



FOR STUDY PURPOSES ONLY. NOT FOR REPRODUCTION.

The Museum of Modern Art Archives, NY	Collection:	Series.Folder:
	Valentin	VIII.B.161





FOR STUDY PURPOSES ONLY. NOT FOR REPRODUCTION.

The Museum of Modern Art Archives, NY	Collection:	Series.Folder:
	Valentin	VIII.B.161

Henry Moore X20  
Study for Family Group  
chalk & wc. 4 3/8 x 7 inches  
1944

Coll: 188 Alice C. Spaulding (Honolulu  
Academy of ART)

Henry Moore X21  
Seated Figures  
ink wc. & chalk 5 1/2 x 8 1/2 inches

Coll:



FOR STUDY PURPOSES ONLY. NOT FOR REPRODUCTION.

The Museum of Modern Art Archives, NY	Collection:	Series.Folder:
	Valentin	VIII.B.161





FOR STUDY PURPOSES ONLY. NOT FOR REPRODUCTION.

The Museum of Modern Art Archives, NY	Collection:	Series.Folder:
	Valentin	VIII.B.161

P52

Henry Moore

Two Women with a Child  
wc. pastel & wash

14 x 22 inches  
1944

Coll: Joseph Hirshhorn, New York City



FOR STUDY PURPOSES ONLY. NOT FOR REPRODUCTION.

The Museum of Modern Art Archives, NY	Collection:	Series.Folder:
	Valentin	VIII.B.161





FOR STUDY PURPOSES ONLY. NOT FOR REPRODUCTION.

The Museum of Modern Art Archives, NY	Collection:	Series.Folder:
	Valentin	VIII.B.161

017

Henry Moore

Reclining Figures  
pastel and gouache

1944

Coll: Maria Martins, New York City



FOR STUDY PURPOSES ONLY. NOT FOR REPRODUCTION.

The Museum of Modern Art Archives, NY	Collection:	Series.Folder:
	Valentin	VIII.B.161





FOR STUDY PURPOSES ONLY. NOT FOR REPRODUCTION.

The Museum of Modern Art Archives, NY	Collection:	Series.Folder:
	Valentin	VIII.B.161

Henry Moore

013

Group of Red Draped Figures  
gouache and pastel

$16\frac{1}{2} \times 12\frac{1}{2}$   
1944

Coll: Lois Orswell, Narragansett



FOR STUDY PURPOSES ONLY. NOT FOR REPRODUCTION.

The Museum of Modern Art Archives, NY	Collection:	Series.Folder:
	Valentin	VIII.B.161





FOR STUDY PURPOSES ONLY. NOT FOR REPRODUCTION.

The Museum of Modern Art Archives, NY	Collection:	Series.Folder:
	Valentin	VIII.B.161

Henry Moore

08

Family Group I  
gouache and pastel

18 $\frac{1}{4}$  x 18  $\frac{3}{4}$   
1944

Coll: Mrs. Stanley Resor, Greenwich



FOR STUDY PURPOSES ONLY. NOT FOR REPRODUCTION.

The Museum of Modern Art Archives, NY	Collection:	Series.Folder:
	Valentin	VIII.B.161





FOR STUDY PURPOSES ONLY. NOT FOR REPRODUCTION.

The Museum of Modern Art Archives, NY	Collection:	Series.Folder:
	Valentin	VIII.B.161

Henry Moore

06

Family Group II  
pastel and gouache

18 1/8 x 14  
1944

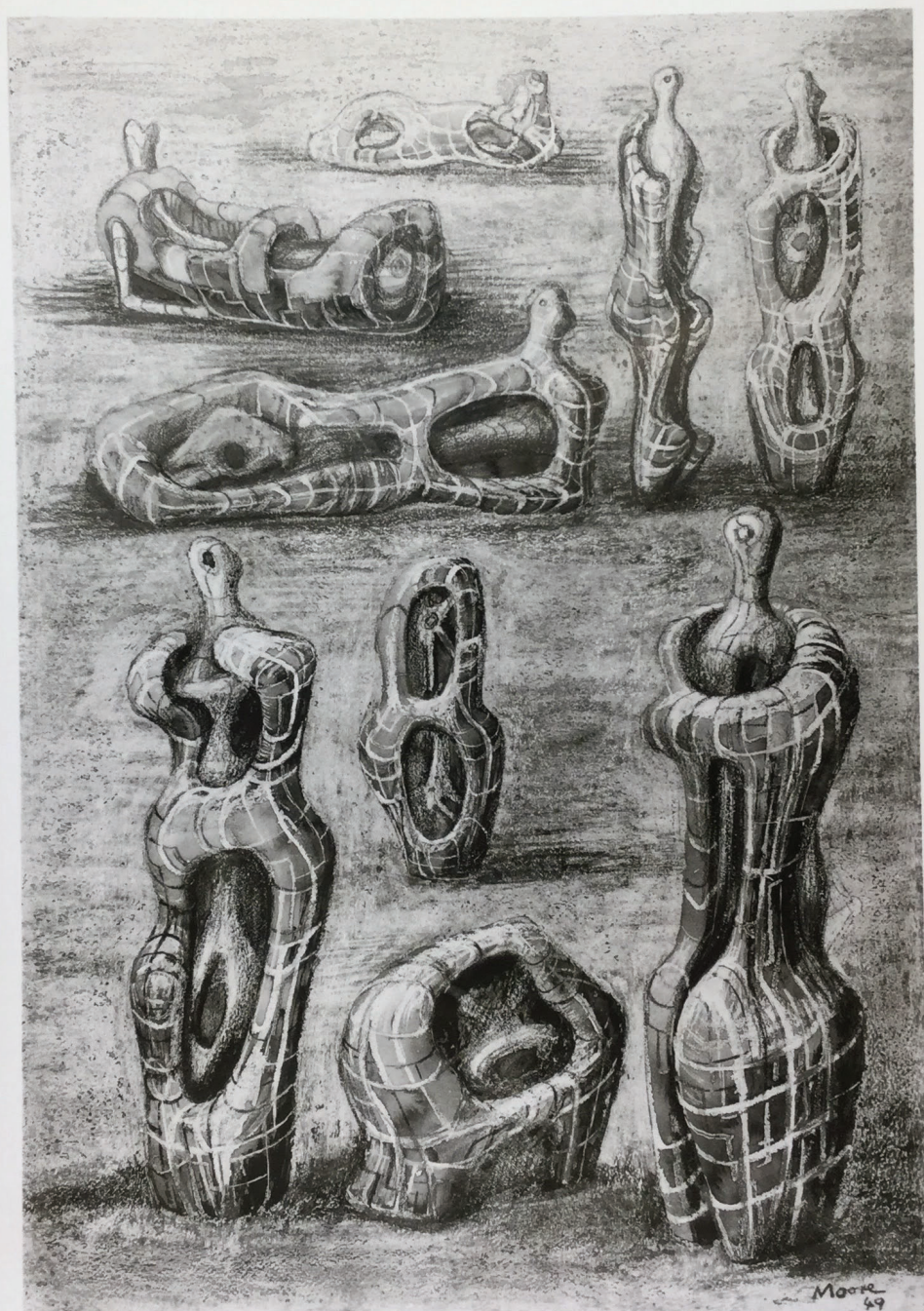
Coll: Robert H. Tannahill, Detroit



FOR STUDY PURPOSES ONLY. NOT FOR REPRODUCTION.

The Museum of Modern Art Archives, NY	Collection:	Series.Folder:
	Valentin	VIII.B.161

4186





FOR STUDY PURPOSES ONLY. NOT FOR REPRODUCTION.

The Museum of Modern Art Archives, NY	Collection:	Series.Folder:
	Valentin	VIII.B.161

AL86

11605

Studies for Sculpture. 1949  
crayon 23 x 15 $\frac{3}{4}$ "  
Henry Moore

Coll:



FOR STUDY PURPOSES ONLY. NOT FOR REPRODUCTION.

The Museum of Modern Art Archives, NY	Collection:	Series.Folder:
	Valentin	VIII.B.161





FOR STUDY PURPOSES ONLY. NOT FOR REPRODUCTION.

The Museum of Modern Art Archives, NY	Collection:	Series.Folder:
	Valentin	VIII.B.161

Henry Moore

L40

3 Seated Women Winding Wool  
crayon

15 3/4 x 22  
1942

Coll: Mr. Janson, St. Louis



FOR STUDY PURPOSES ONLY. NOT FOR REPRODUCTION.

The Museum of Modern Art Archives, NY	Collection:	Series.Folder:
	Valentin	VIII.B.161





FOR STUDY PURPOSES ONLY. NOT FOR REPRODUCTION.

The Museum of Modern Art Archives, NY	Collection:	Series.Folder:
	Valentin	VIII.B.161

Henry Moore

V69

Ideas for Sculpture. Skb.

Sketches on reverse

wc. cry. ink.

8 7/8 x 6 7/8"  
1944

Coll: Miss Ordway, New York City



FOR STUDY PURPOSES ONLY. NOT FOR REPRODUCTION.

The Museum of Modern Art Archives, NY	Collection:	Series.Folder:
	Valentin	VIII.B.161





FOR STUDY PURPOSES ONLY. NOT FOR REPRODUCTION.

The Museum of Modern Art Archives, NY	Collection:	Series.Folder:
	Valentin	VIII.B.161

Henry Moore

V70

Study for Family Group

wc. cry. ink

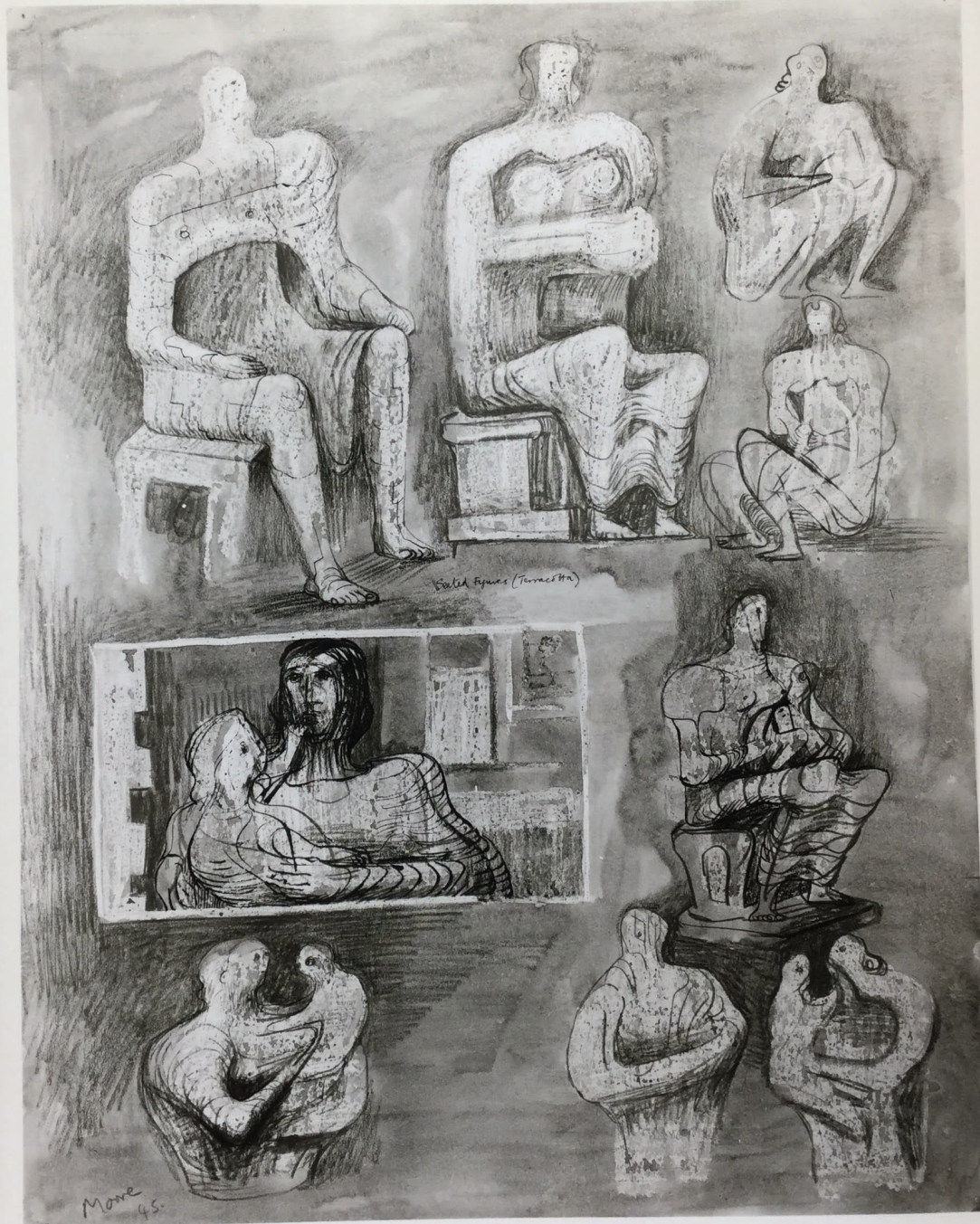
19 $\frac{1}{2}$  x 15  $\frac{3}{8}$  inches  
1945

Coll: George Gallowhury New York City



FOR STUDY PURPOSES ONLY. NOT FOR REPRODUCTION.

The Museum of Modern Art Archives, NY	Collection:	Series.Folder:
	Valentin	VIII.B.161





FOR STUDY PURPOSES ONLY. NOT FOR REPRODUCTION.

The Museum of Modern Art Archives, NY	Collection:	Series.Folder:
	Valentin	VIII.B.161

Henry Moore

U90

Sheet of Sketches  
wc. cry. ink

24 3/4 x 19 inches  
1945

Coll:



FOR STUDY PURPOSES ONLY. NOT FOR REPRODUCTION.

The Museum of Modern Art Archives, NY	Collection:	Series.Folder:
	Valentin	VIII.B.161





FOR STUDY PURPOSES ONLY. NOT FOR REPRODUCTION.

The Museum of Modern Art Archives, NY

Collection:

Valentin

Series.Folder:

VIII.B.161





FOR STUDY PURPOSES ONLY. NOT FOR REPRODUCTION.

The Museum of Modern Art Archives, NY	Collection:	Series.Folder:
	Valentin	VIII.B.161

Henry Moore. U88

Two Women with Children  
wc. cry.

18 x 23  
1945

Coll: ~~Henry Moore, London~~



FOR STUDY PURPOSES ONLY. NOT FOR REPRODUCTION.

The Museum of Modern Art Archives, NY	Collection:	Series.Folder:
	Valentin	VIII.B.161





FOR STUDY PURPOSES ONLY. NOT FOR REPRODUCTION.

The Museum of Modern Art Archives, NY	Collection:	Series.Folder:
	Valentin	VIII.B.161

Henry Moore

U86

Family Group  
wc. cry.

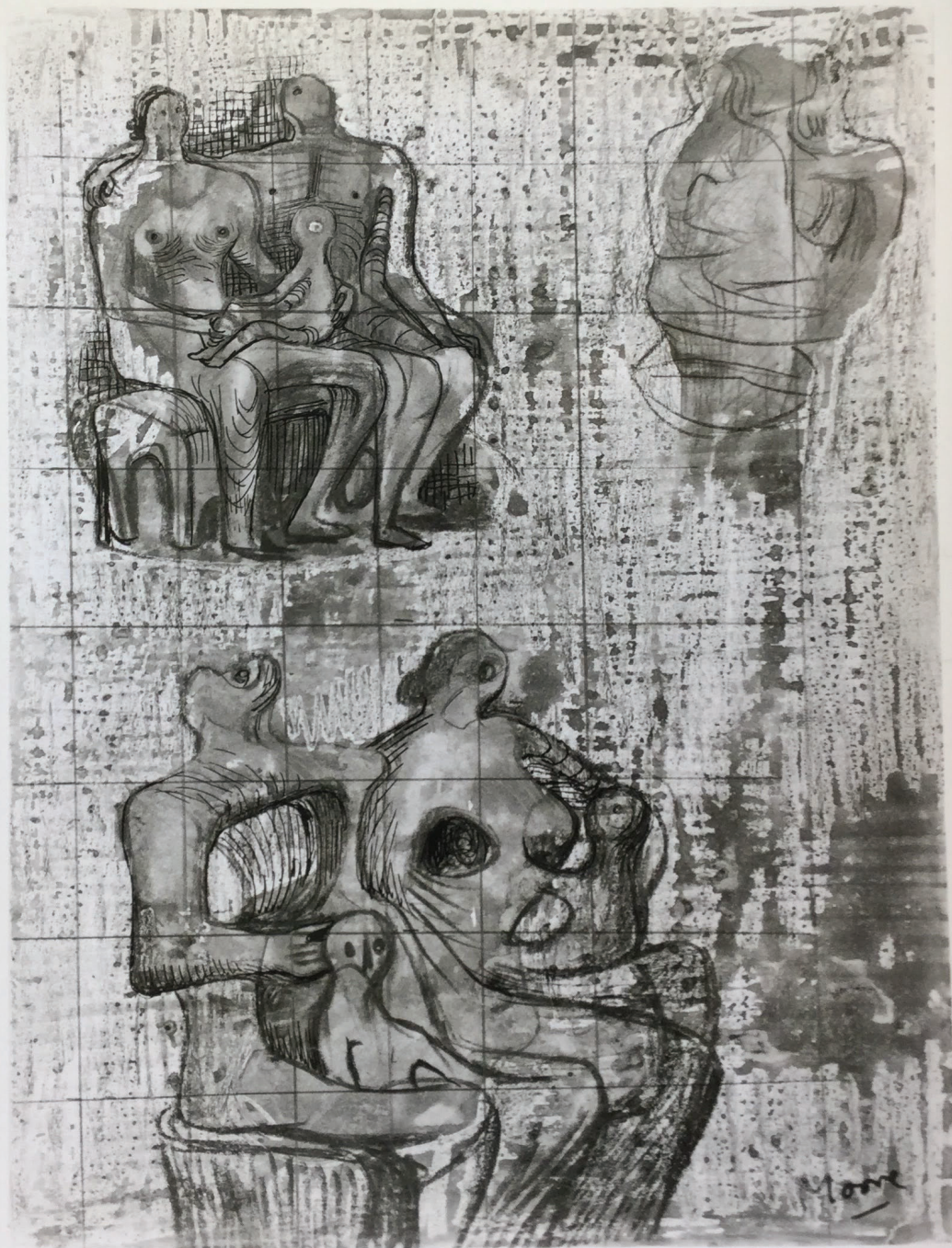
18 3/4 x 19 1/2 inches  
1945

Coll: *City Art Museum, St. Louis*



FOR STUDY PURPOSES ONLY. NOT FOR REPRODUCTION.

The Museum of Modern Art Archives, NY	Collection:	Series.Folder:
	Valentin	VIII.B.161





FOR STUDY PURPOSES ONLY. NOT FOR REPRODUCTION.

The Museum of Modern Art Archives, NY	Collection:	Series.Folder:
	Valentin	VIII.B.161

Henry Moore

V50

Studies for Family Groups. Skb.

wc. ink. cry.

9 x 6 5/8 inches

c. 1945

Coll:



FOR STUDY PURPOSES ONLY. NOT FOR REPRODUCTION.

The Museum of Modern Art Archives, NY	Collection:	Series.Folder:
	Valentin	VIII.B.161





FOR STUDY PURPOSES ONLY. NOT FOR REPRODUCTION.

The Museum of Modern Art Archives, NY	Collection:	Series.Folder:
	Valentin	VIII.B.161

Henry Moore

Two Seated Women  
wc. chalk

Coll:

W8

15 x 21 $\frac{1}{2}$  inches  
undated



FOR STUDY PURPOSES ONLY. NOT FOR REPRODUCTION.

The Museum of Modern Art Archives, NY	Collection:	Series.Folder:
	Valentin	VIII.B.161





FOR STUDY PURPOSES ONLY. NOT FOR REPRODUCTION.

The Museum of Modern Art Archives, NY	Collection:	Series.Folder:
	Valentin	VIII.B.161

Henry Moore

W9

Holes in Sculpture  
wc. cry. ink

8 $\frac{1}{4}$  x 6  $\frac{5}{8}$  inches

Coll:



FOR STUDY PURPOSES ONLY. NOT FOR REPRODUCTION.

The Museum of Modern Art Archives, NY

Collection:

Valentin

Series.Folder:

VIII.B.161





FOR STUDY PURPOSES ONLY. NOT FOR REPRODUCTION.

The Museum of Modern Art Archives, NY	Collection:	Series.Folder:
	Valentin	VIII.B.161

Henry Moore

V79

Sketch for Portfolio Cover

ink  $14\frac{1}{2} \times 10\frac{1}{2}$  inches

1946

Coll: Frederick Zimmermann, New York City



FOR STUDY PURPOSES ONLY. NOT FOR REPRODUCTION.

The Museum of Modern Art Archives, NY	Collection:	Series.Folder:
	Valentin	VIII.B.161





FOR STUDY PURPOSES ONLY. NOT FOR REPRODUCTION.

The Museum of Modern Art Archives, NY	Collection:	Series.Folder:
	Valentin	VIII.B.161

Henry Moore

X1

After the Blitz  
charcoal and chalk

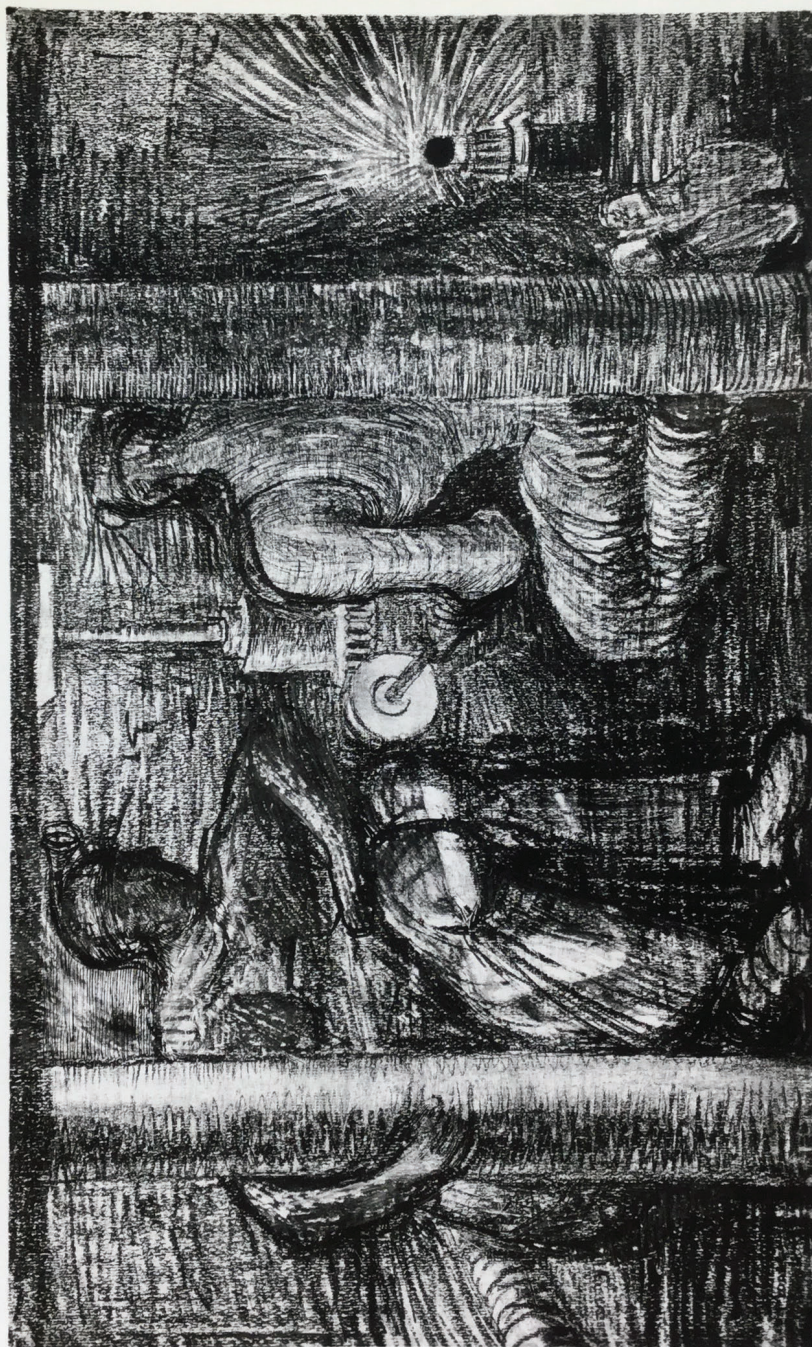
25 x 22 inches

Coll: Wadsworth Atheneum



FOR STUDY PURPOSES ONLY. NOT FOR REPRODUCTION.

The Museum of Modern Art Archives, NY	Collection:	Series.Folder:
	Valentin	VIII.B.161





FOR STUDY PURPOSES ONLY. NOT FOR REPRODUCTION.

The Museum of Modern Art Archives, NY	Collection:	Series.Folder:
	Valentin	VIII.B.161

Henry Moore

X9

Mineers  
charcole

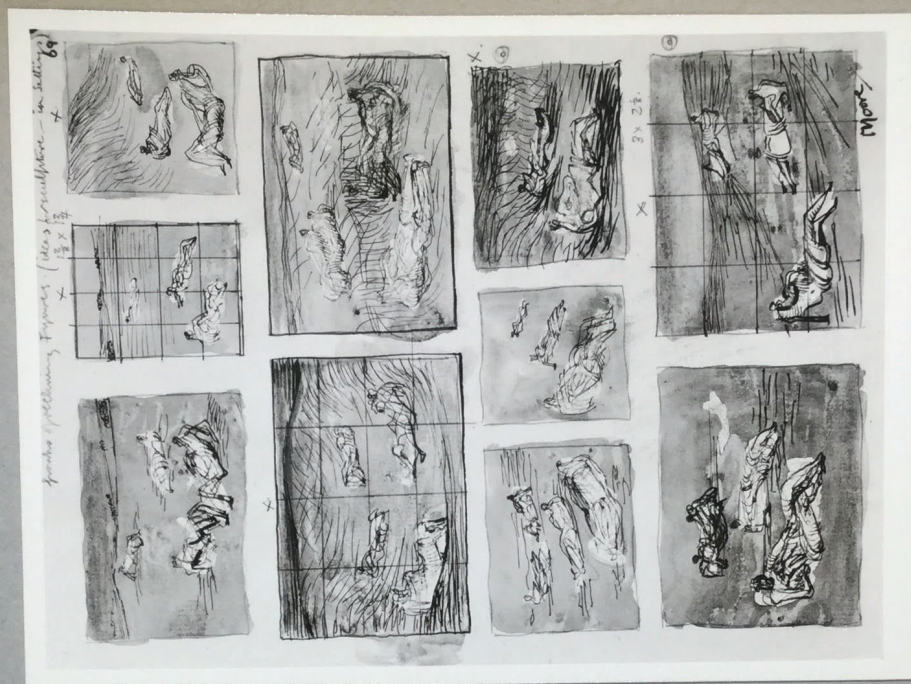
13 x 22 In

Coll:



FOR STUDY PURPOSES ONLY. NOT FOR REPRODUCTION.

The Museum of Modern Art Archives, NY	Collection:	Series.Folder:
	Valentin	VIII.B.161





FOR STUDY PURPOSES ONLY. NOT FOR REPRODUCTION.

The Museum of Modern Art Archives, NY	Collection:	Series.Folder:
	Valentin	VIII.B.161

XL7

Henry Moore

Sheet of Sketches  
ink & wc.

9 x 7 inches

Coll:

XL8

Henry Moore

Study for Northampton Madonna  
ink chalk & wash

9 x 7 inches

Coll: MRS. P. PALMER



FOR STUDY PURPOSES ONLY. NOT FOR REPRODUCTION.

The Museum of Modern Art Archives, NY

Collection:

Valentin

Series.Folder:

VIII.B.161





FOR STUDY PURPOSES ONLY. NOT FOR REPRODUCTION.

The Museum of Modern Art Archives, NY	Collection:	Series.Folder:
	Valentin	VIII.B.161

Henry Moore X22

Seated Figures  
ink wc. & chalk  $8\frac{1}{2} \times 5\frac{3}{8}$  inches

Coll: Cady Wells

Henry Moore X19

Reclining Figures  
ink & chalk  $8\frac{3}{4} \times 7$  inches

Coll:



FOR STUDY PURPOSES ONLY. NOT FOR REPRODUCTION.

The Museum of Modern Art Archives, NY	Collection:	Series.Folder:
	Valentin	VIII.B.161





FOR STUDY PURPOSES ONLY. NOT FOR REPRODUCTION.

The Museum of Modern Art Archives, NY	Collection:	Series.Folder:
	Valentin	VIII.B.161

Henry Moore X23  
Figures  
wc. & chalk  
5 1/2 x 8 1/2 inches

Coll: Dr. Will Grohmann, Berlin

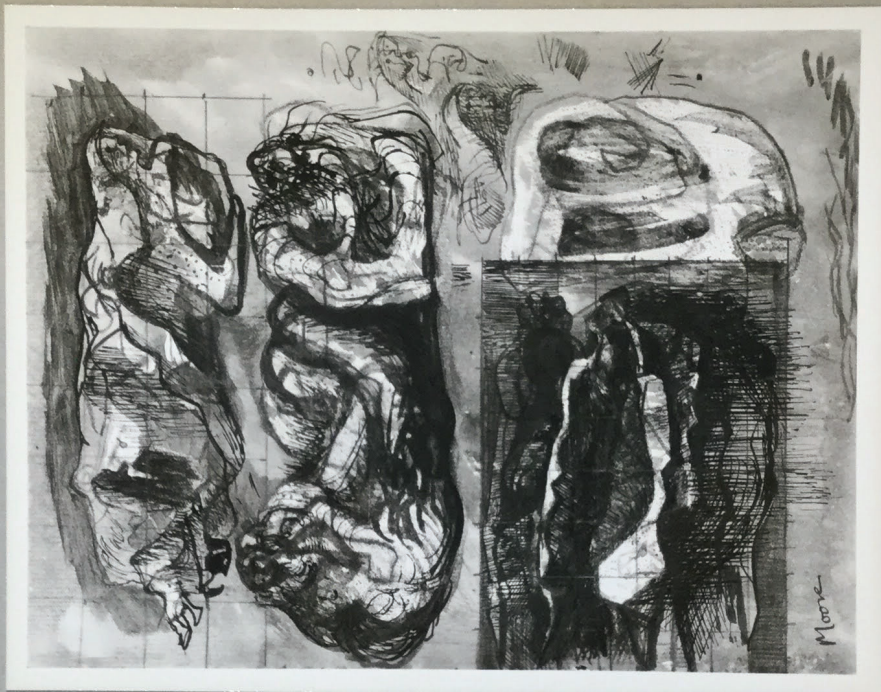
Henry Moore X24  
Studies for Seated Figures  
chalk & wc.  
5 3/8 x 8 1/2 inches

Coll:



FOR STUDY PURPOSES ONLY. NOT FOR REPRODUCTION.

The Museum of Modern Art Archives, NY	Collection:	Series.Folder:
	Valentin	VIII.B.161





FOR STUDY PURPOSES ONLY. NOT FOR REPRODUCTION.

The Museum of Modern Art Archives, NY	Collection:	Series.Folder:
	Valentin	VIII.B.161

AA12 9300  
Sketch Book. Three Reclining  
Figures. Watercolor 9 x 6<sup>3</sup>/<sub>4</sub>"  
Henry Moore

Coll:

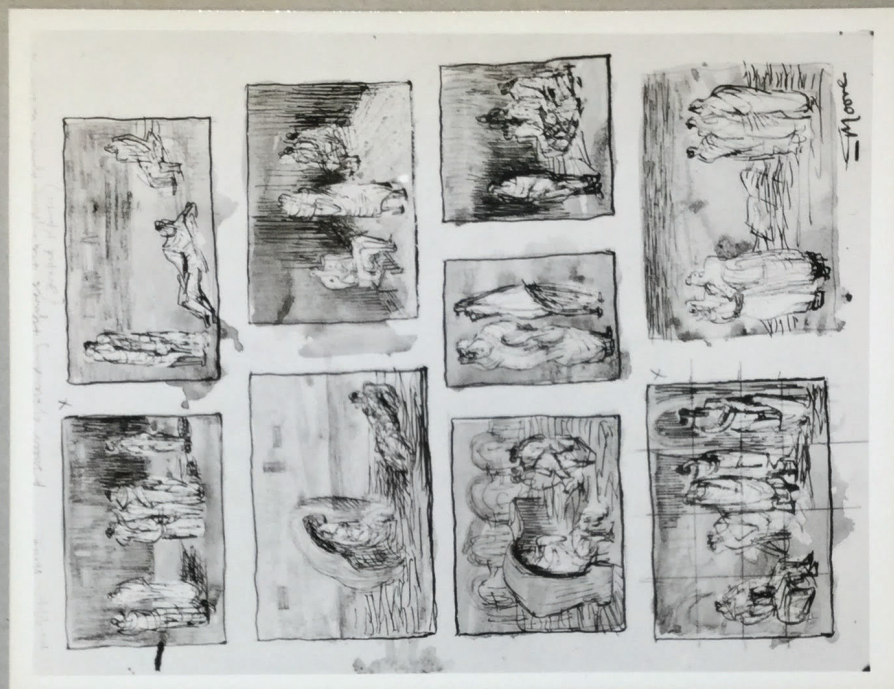
AA 20 9315  
Sketch of Seated Women and Children  
Watercolor 7 x 10"  
Henry Moore

Coll; Kleeman Galleries



FOR STUDY PURPOSES ONLY. NOT FOR REPRODUCTION.

The Museum of Modern Art Archives, NY	Collection:	Series.Folder:
	Valentin	VIII.B.161





FOR STUDY PURPOSES ONLY. NOT FOR REPRODUCTION.

The Museum of Modern Art Archives, NY	Collection:	Series.Folder:
	Valentin	VIII.B.161

AA15

9297

Sketch Book. Nine small drawings  
of Figures in Settings  
Watercolor 9 x 6 $\frac{3}{4}$ "  
Henry Moore

Coll:

AA11

9295

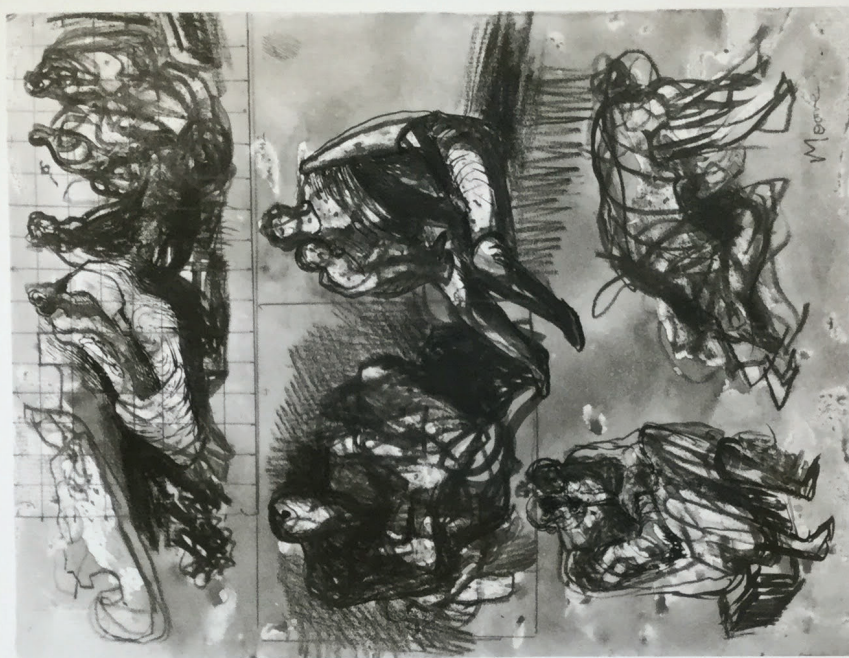
Sketch Book: Studies of a Woman  
on grey background  
Watercolor 9 x 6 $\frac{3}{4}$ "  
Henry Moore

Coll:



FOR STUDY PURPOSES ONLY. NOT FOR REPRODUCTION.

The Museum of Modern Art Archives, NY	Collection:	Series.Folder:
	Valentin	VIII.B.161





FOR STUDY PURPOSES ONLY. NOT FOR REPRODUCTION.

The Museum of Modern Art Archives, NY	Collection:	Series.Folder:
	Valentin	VIII.B.161

AA19

9301

Sketch Book: Figure Studies  
Watercolor 9 x 6 $\frac{3}{4}$ "  
Henry Moore

Coll:

AA13

9299

Sketch Book. Draped Figures  
Watercolor 9 x 6 $\frac{3}{4}$ "  
Henry Moore

Coll: University of Nebraska



FOR STUDY PURPOSES ONLY. NOT FOR REPRODUCTION.

The Museum of Modern Art Archives, NY

Collection:

Valentin

Series.Folder:

VIII.B.161





FOR STUDY PURPOSES ONLY. NOT FOR REPRODUCTION.

The Museum of Modern Art Archives, NY	Collection:	Series.Folder:
	Valentin	VIII.B.161

AA 16

9292

Sketch Book. Two Seated Women  
and Children.

Watercolor 9 x 6 $\frac{3}{4}$ "

Henry Moore

Coll:

AA14

9293

Sketch Book. Studies of Standing  
and Reclining Figures

Watercolor 9 x 6 $\frac{3}{4}$ "

Henry Moore

Coll:



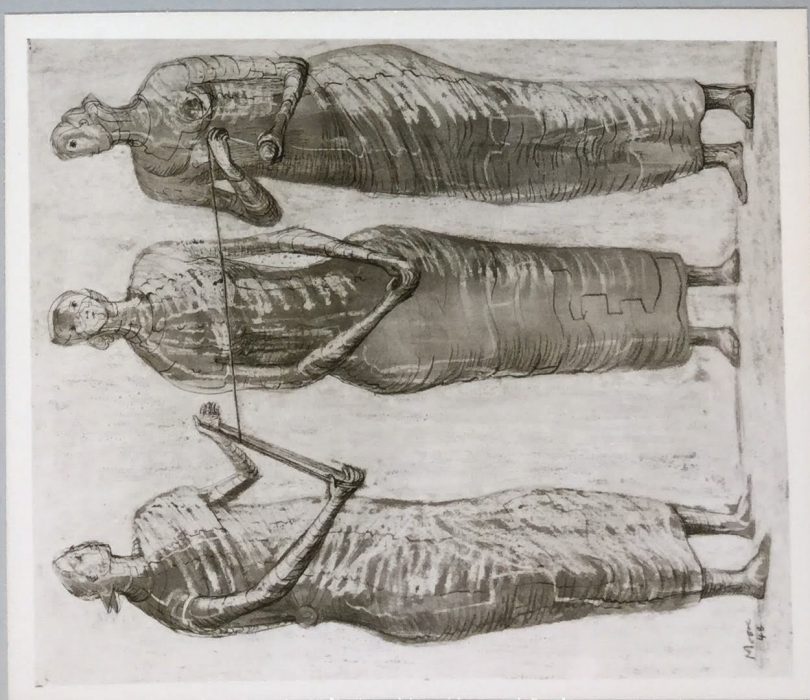
FOR STUDY PURPOSES ONLY. NOT FOR REPRODUCTION.

The Museum of Modern Art Archives, NY	Collection:	Series.Folder:
	Valentin	VIII.B.161

AF22



AF23





FOR STUDY PURPOSES ONLY. NOT FOR REPRODUCTION.

The Museum of Modern Art Archives, NY	Collection:	Series.Folder:
	Valentin	VIII.B.161

AF22

10777

Interior and Exterior Forms  
Drawing for Sculpture  
Watercolor and crayon.  $19\frac{1}{4} \times 19\frac{1}{2}$ "  
Henry Moore. 1948

Coll: Mrs Gates Lloyd

AF23

10776

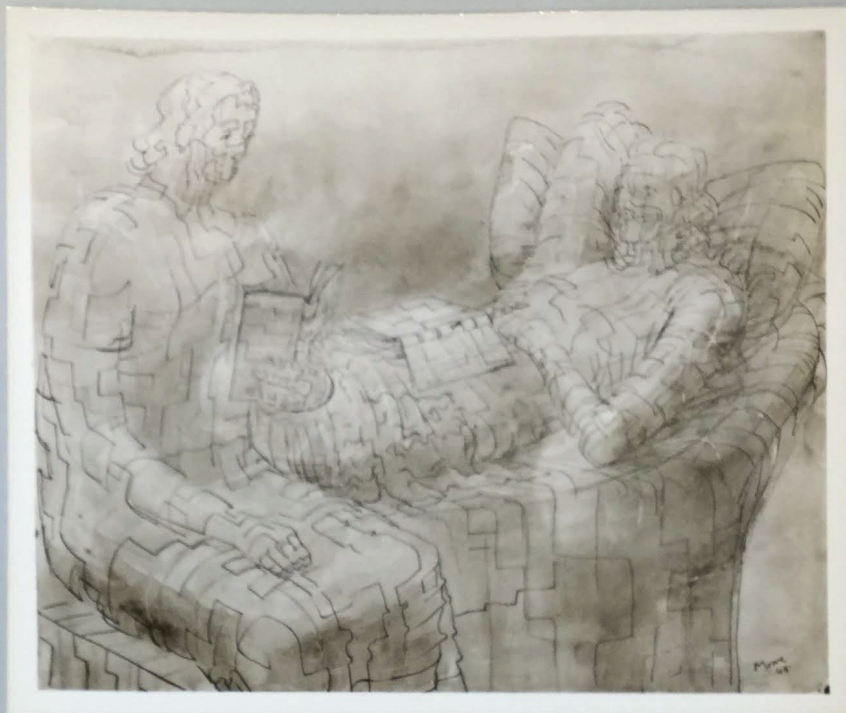
Henry Moore  
The Three Fates. 1948  
Watercolor, ink, and crayon.  
 $21\frac{3}{4} \times 19$ "

Coll: Mrs Charles Gorham, NYC



FOR STUDY PURPOSES ONLY. NOT FOR REPRODUCTION.

The Museum of Modern Art Archives, NY	Collection:	Series.Folder:
	Valentin	VIII.B.161





FOR STUDY PURPOSES ONLY. NOT FOR REPRODUCTION.

The Museum of Modern Art Archives, NY	Collection:	Series.Folder:
	Valentin	VIII.B.161

AF24

10782

Henry Moore  
Women Reading. 1948  
Watercolor and crayon. 22 x 26"

Coll: Mrs Stanley Resor, Greenwich

AF25

10780

Henry Moore  
Two Women. 1948  
Watercolor and crayon. 15 x 22"

Coll:



FOR STUDY PURPOSES ONLY. NOT FOR REPRODUCTION.

The Museum of Modern Art Archives, NY	Collection:	Series.Folder:
	Valentin	VIII.B.161

AF12





FOR STUDY PURPOSES ONLY. NOT FOR REPRODUCTION.

The Museum of Modern Art Archives, NY	Collection:	Series.Folder:
	Valentin	VIII.B.161

AF12

10779

Henry Moore

Two Seated Figures. 1948

Watercolor and crayon.  $23\frac{3}{4}$  x 22"

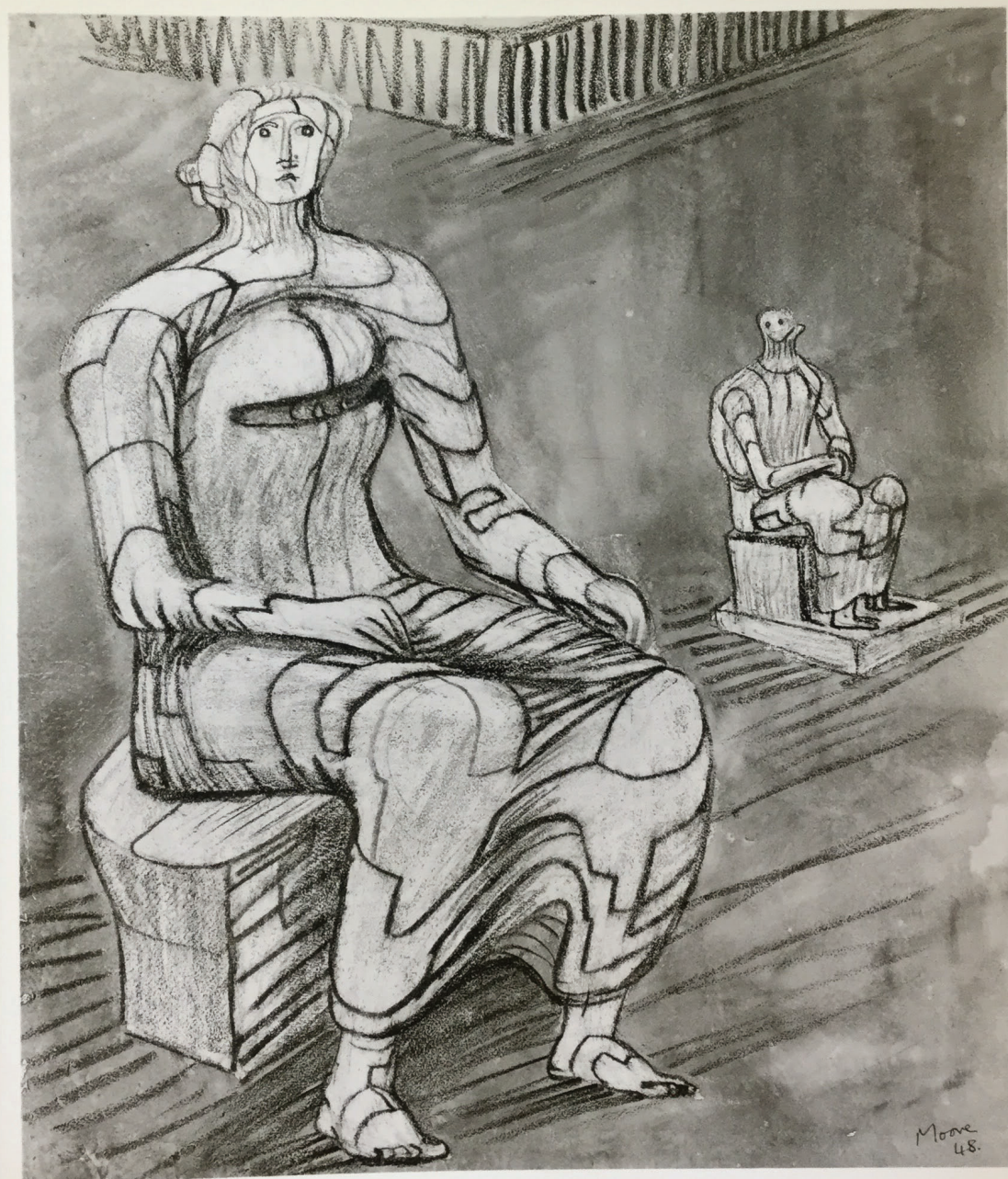
Coll:



FOR STUDY PURPOSES ONLY. NOT FOR REPRODUCTION.

The Museum of Modern Art Archives, NY	Collection:	Series.Folder:
	Valentin	VIII.B.161

AF11





FOR STUDY PURPOSES ONLY. NOT FOR REPRODUCTION.

The Museum of Modern Art Archives, NY	Collection:	Series.Folder:
	Valentin	VIII.B.161

AF11

10778

Henry Moore

Seated Figure. 1948

Watercolor and crayon.  $22\frac{1}{2}$  x  $19\frac{3}{4}$ "

Coll:



FOR STUDY PURPOSES ONLY. NOT FOR REPRODUCTION.

The Museum of Modern Art Archives, NY	Collection:	Series.Folder:
	Valentin	VIII.B.161

AF10





FOR STUDY PURPOSES ONLY. NOT FOR REPRODUCTION.

The Museum of Modern Art Archives, NY	Collection:	Series.Folder:
	Valentin	VIII.B.161

AF10

10781

Henry Moore

Two Seated Figures. 1948

Watercolor and crayon. 22 x 26 $\frac{1}{2}$ "

Coll:



FOR STUDY PURPOSES ONLY. NOT FOR REPRODUCTION.

The Museum of Modern Art Archives, NY	Collection:	Series.Folder:
	Valentin	VIII.B.161





FOR STUDY PURPOSES ONLY. NOT FOR REPRODUCTION.

The Museum of Modern Art Archives, NY	Collection:	Series.Folder:
	Valentin	VIII.B.161

11208

AJ11

Two Women with Pitcher. 1948  
chalk, ink, watercolor 22 x 22<sup>3</sup>/<sub>4</sub>"  
Henry Moore

Coll:

11207

AJ10

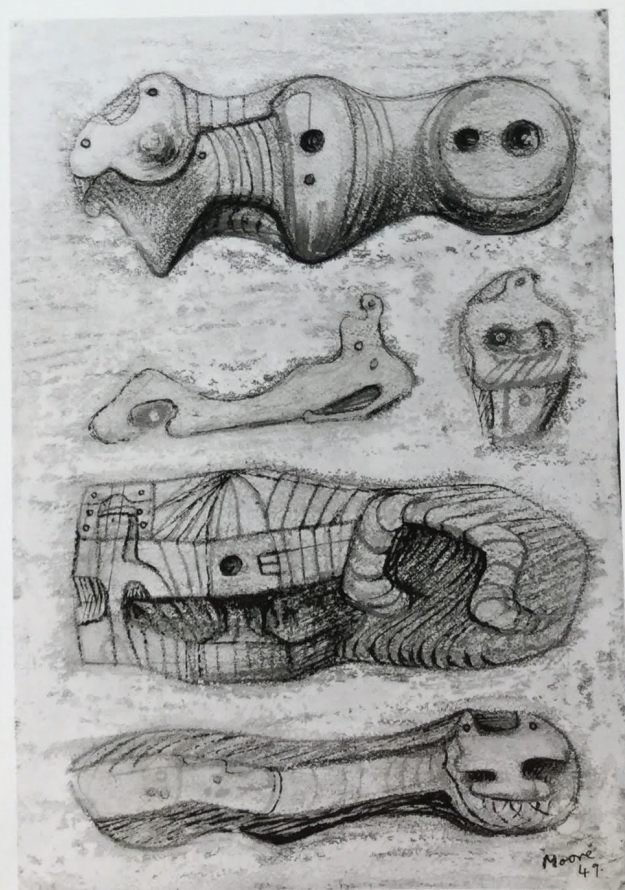
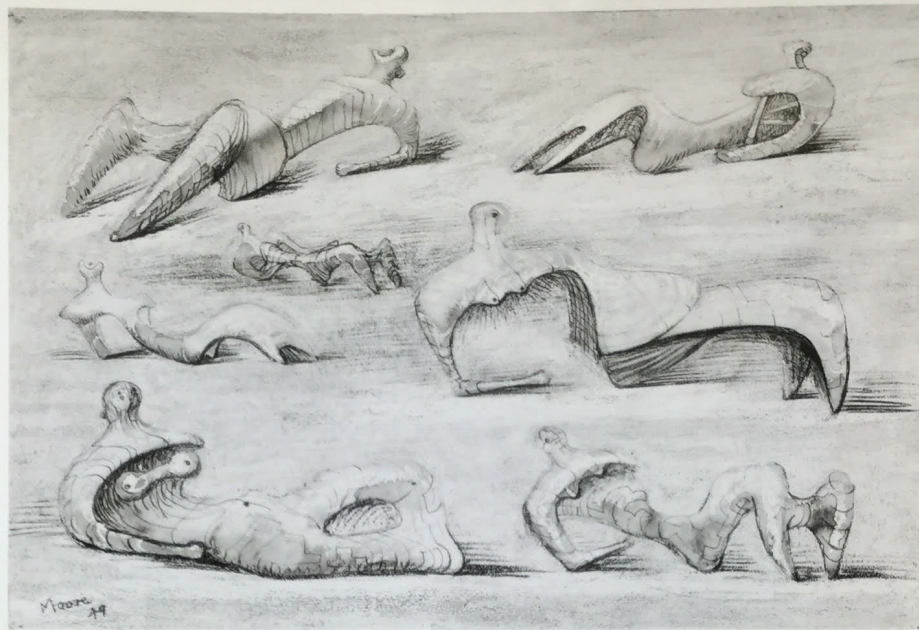
Seated Figure. 1948  
chalk, ink, watercolor 22 x 23"  
Henry Moore

Coll:



FOR STUDY PURPOSES ONLY. NOT FOR REPRODUCTION.

The Museum of Modern Art Archives, NY	Collection:	Series.Folder:
	Valentin	VIII.B.161





FOR STUDY PURPOSES ONLY. NOT FOR REPRODUCTION.

The Museum of Modern Art Archives, NY	Collection:	Series.Folder:
	Valentin	VIII.B.161

11205

AJ-1

Sketches for Reclining Figure.  
chalk, ink, watercolor  $15\frac{1}{2} \times 22\frac{3}{4}$ "  
Henry Moore 1949

Coll: Ervin Richards

11203

AH92

Study for Reclining Figure.  
chalk, ink, watercolor  $15\frac{1}{2} \times 11$ "  
Henry Moore 1949

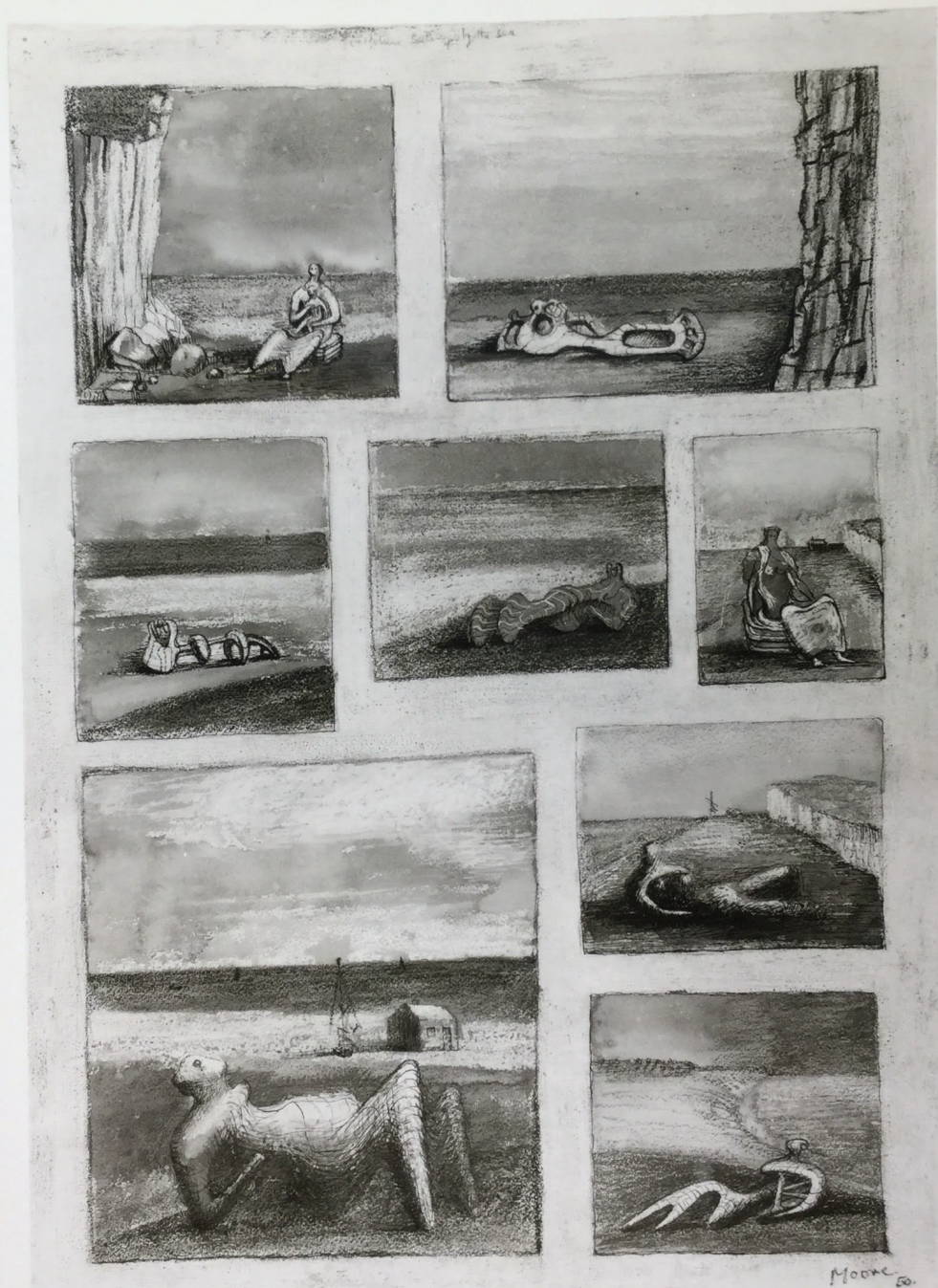
Coll:



FOR STUDY PURPOSES ONLY. NOT FOR REPRODUCTION.

The Museum of Modern Art Archives, NY	Collection:	Series.Folder:
	Valentin	VIII.B.161

A 487





FOR STUDY PURPOSES ONLY. NOT FOR REPRODUCTION.

The Museum of Modern Art Archives, NY	Collection:	Series.Folder:
	Valentin	VIII.B.161

AL87

11604

Sculpture Settings by the Sea.  
crayon 21 5/8 x 15 3/8"  
Henry Moore 1950

Coll:



FOR STUDY PURPOSES ONLY. NOT FOR REPRODUCTION.

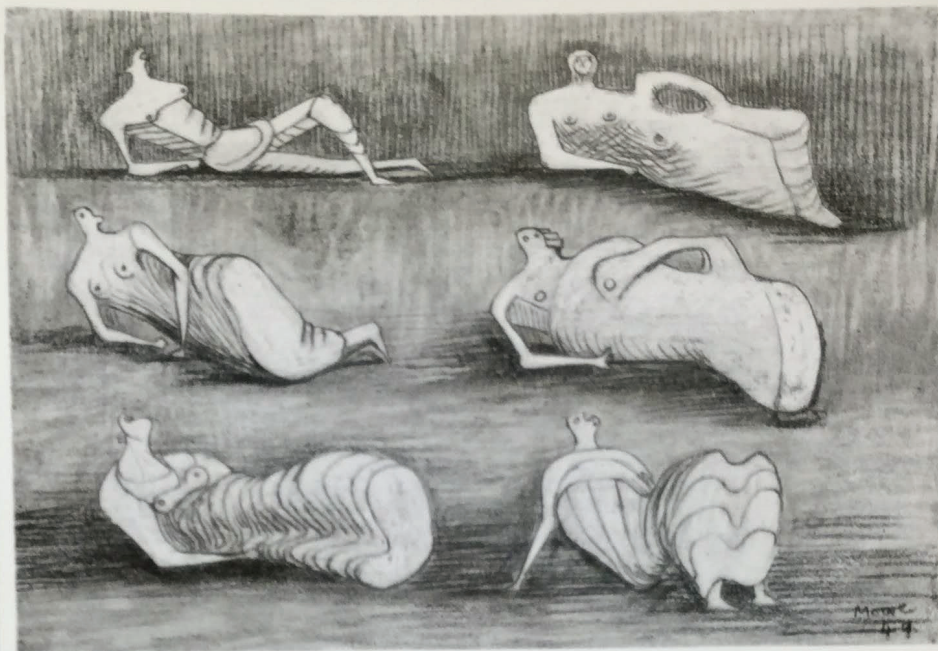
The Museum of Modern Art Archives, NY

Collection:

Valentin

Series.Folder:

VIII.B.161





FOR STUDY PURPOSES ONLY. NOT FOR REPRODUCTION.

The Museum of Modern Art Archives, NY	Collection:	Series.Folder:
	Valentin	VIII.B.161

11204

AJ-9

Sketch for Reclining Figure.

chalk, ink, watercolor  $15\frac{1}{2}$  x  $22\frac{1}{2}$ "

Henry Moore 1949

Coll:

EE1  
5-41  
0984

11206

AJ-8

Mother and Child Sketches.

chalk, ink, watercolor  $22\frac{1}{2}$  x  $15\frac{1}{2}$ "

Henry Moore 1949

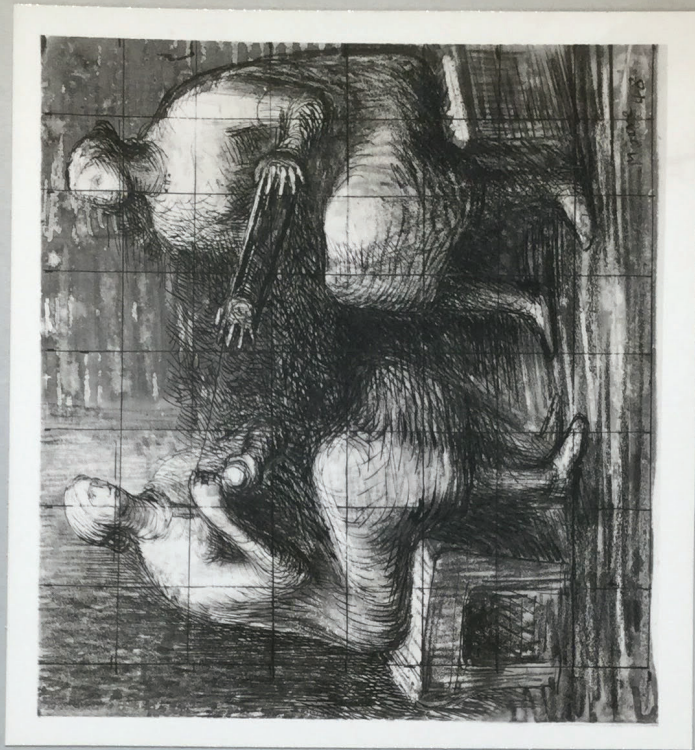
Coll:



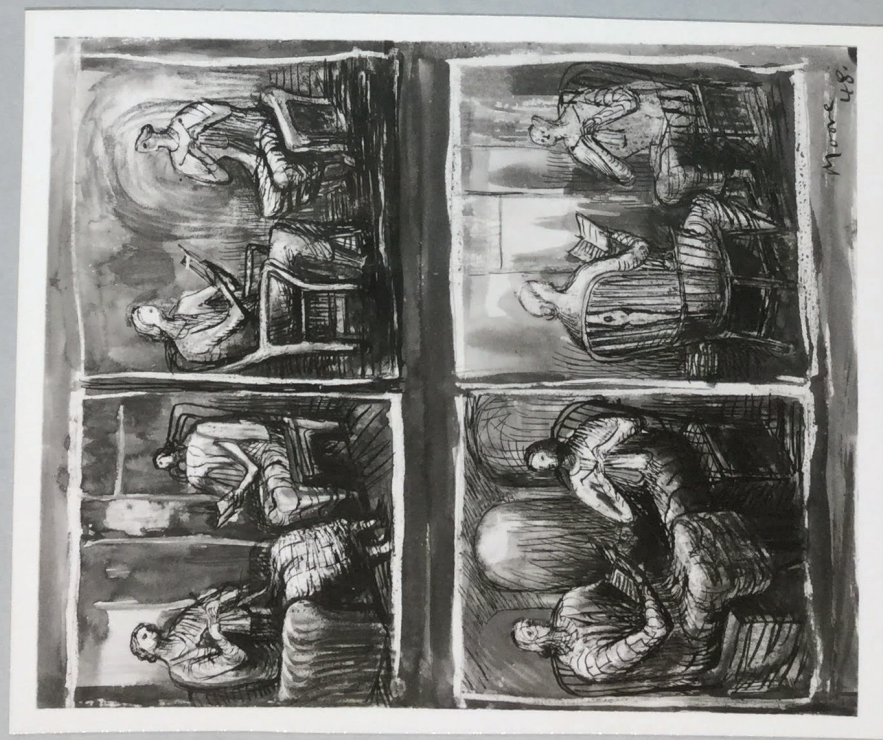
FOR STUDY PURPOSES ONLY. NOT FOR REPRODUCTION.

The Museum of Modern Art Archives, NY	Collection:	Series.Folder:
	Valentin	VIII.B.161

AQ22



AQ21





FOR STUDY PURPOSES ONLY. NOT FOR REPRODUCTION.

The Museum of Modern Art Archives, NY	Collection:	Series.Folder:
	Valentin	VIII.B.161

AQ22 12624  
Skb: Women Winding Wool. 1948  
Watercolor & crayon  $8\frac{1}{2}$  x  $9\frac{1}{4}$ "  
Henry Moore

Coll: Mrs. Alma Morgenthau, NYC

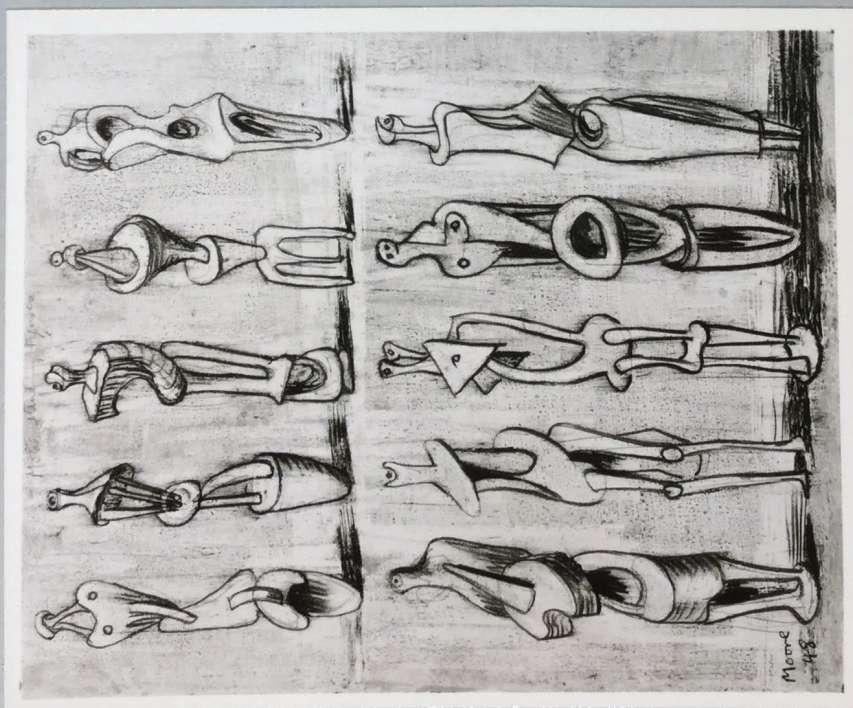
AQ21 12623  
Skb: Women Reading and Knitting.  
1948 Watercolor, crayon  $11\frac{1}{2}$  x  $9\frac{1}{2}$ "  
Henry Moore

Coll:



FOR STUDY PURPOSES ONLY. NOT FOR REPRODUCTION.

The Museum of Modern Art Archives, NY	Collection:	Series.Folder:
	Valentin	VIII.B.161





The Museum of Modern Art Archives, NY	Collection:	Series.Folder:
	Valentin	VIII.B.161

AQ28 12600  
Skb: Three Reclining Figures.  
1948 Watercolor, crayon  $11\frac{1}{2} \times 9\frac{1}{2}$ "  
Henry Moore  
Coll: Mr. Henry Hope, Bloomington, Indiana

AQ27 12601  
Skb: Metal Standing Figures. 1948  
Watercolor, crayon  $11\frac{1}{2} \times 9\frac{1}{2}$ "  
Henry Moore  
Coll:



The Museum of Modern Art Archives, NY	Collection:	Series/Folder:
	Valentin	VIII.B.161

AQ30



AQ29





The Museum of Modern Art Archives, NY	Collection:	Series.Folder:
	Valentin	VIII.B.161

AQ30

12604

Skb: Family Groups. 1949  
Watercolor & crayon  $11\frac{1}{2} \times 9\frac{1}{2}$ "  
Henry Moore

Coll: Mr. Harry Caesar

AQ29

12606

Skb: Rocking Chairs. 1948  
Watercolor & crayon  $11\frac{1}{2} \times 9\frac{1}{2}$ "  
Henry Moore

Coll: Mr. Joseph Hirshhorn, NYC



FOR STUDY PURPOSES ONLY. NOT FOR REPRODUCTION.

The Museum of Modern Art Archives, NY	Collection:	Series.Folder:
	Valentin	VIII.B.161

AQ36



AQ35





The Museum of Modern Art Archives, NY	Collection:	Series.Folder:
	Valentin	VIII.B.161

AQ36

12607

Skb: Three Reclining Figures. 1948  
Watercolor & crayon  $11\frac{1}{2} \times 9\frac{1}{2}$ "  
Henry Moore

Coll:

AQ35

12606

Skb: Reclining Figures. 1948  
Watercolor & crayon  $11\frac{1}{2} \times 9\frac{1}{2}$ "  
Henry Moore

Coll: Mr. Joseph Hirshhorn, NYC



FOR STUDY PURPOSES ONLY. NOT FOR REPRODUCTION.

The Museum of Modern Art Archives, NY	Collection:	Series.Folder:
	Valentin	VIII.B.161

AQ46



AQ45





The Museum of Modern Art Archives, NY	Collection:	Series.Folder:
	Valentin	VIII.B.161

AQ46

12603

Skb: Figures in Settings. 1948  
Watercolor & crayon  $11\frac{1}{2} \times 9\frac{1}{2}$ "  
Henry Moore

Coll:

AQ45

12619

Skb: Standing Figures. 1948  
Watercolor and crayon  $11\frac{1}{2} \times 9\frac{1}{2}$ "  
Henry Moore

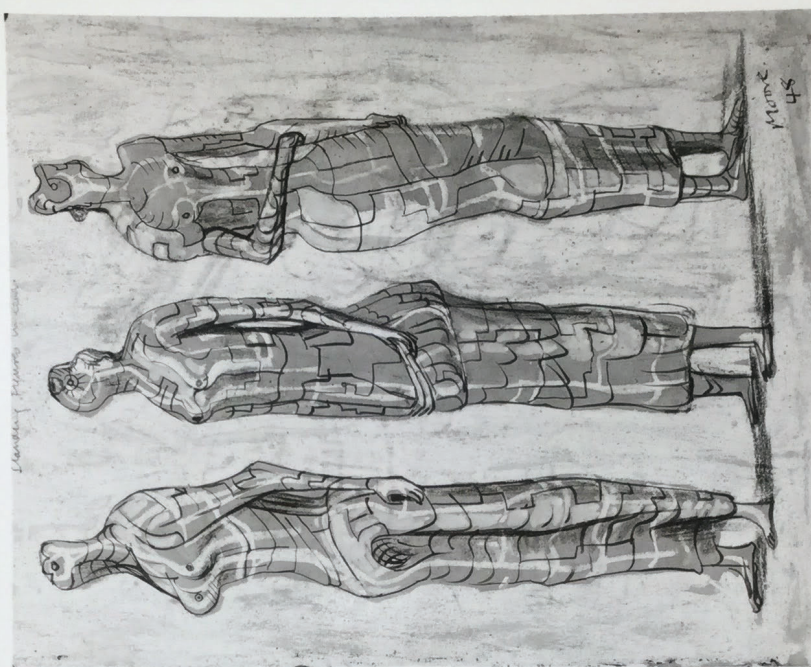
Coll: Mrs. Benjamin P. Watson, NYC



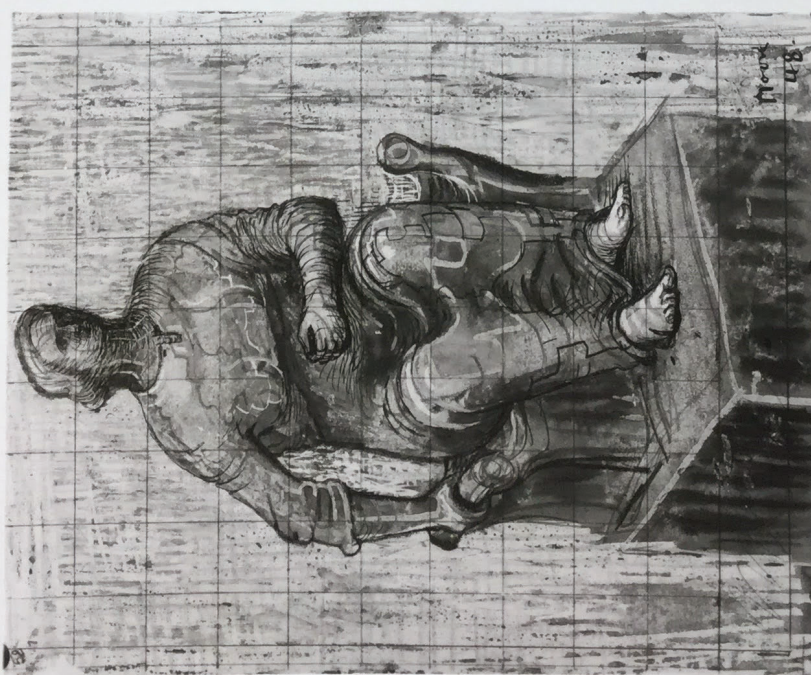
FOR STUDY PURPOSES ONLY. NOT FOR REPRODUCTION.

The Museum of Modern Art Archives, NY	Collection:	Series.Folder:
	Valentin	VIII.B.161

AQ44



AQ43





FOR STUDY PURPOSES ONLY. NOT FOR REPRODUCTION.

The Museum of Modern Art Archives, NY	Collection:	Series.Folder:
	Valentin	VIII.B.161

AQ44

12618

Skb: Three Standing Figures.

1948 Watercolor, crayon  $11\frac{1}{2} \times 9\frac{1}{2}$ "

Henry Moore

Coll:

AQ43

12620

Skb: Seated Woman.

1948

Watercolor & crayon  $11\frac{1}{2} \times 9\frac{1}{2}$ "

Henry Moore

Coll:

Dr. Lillian Malcove, NYC

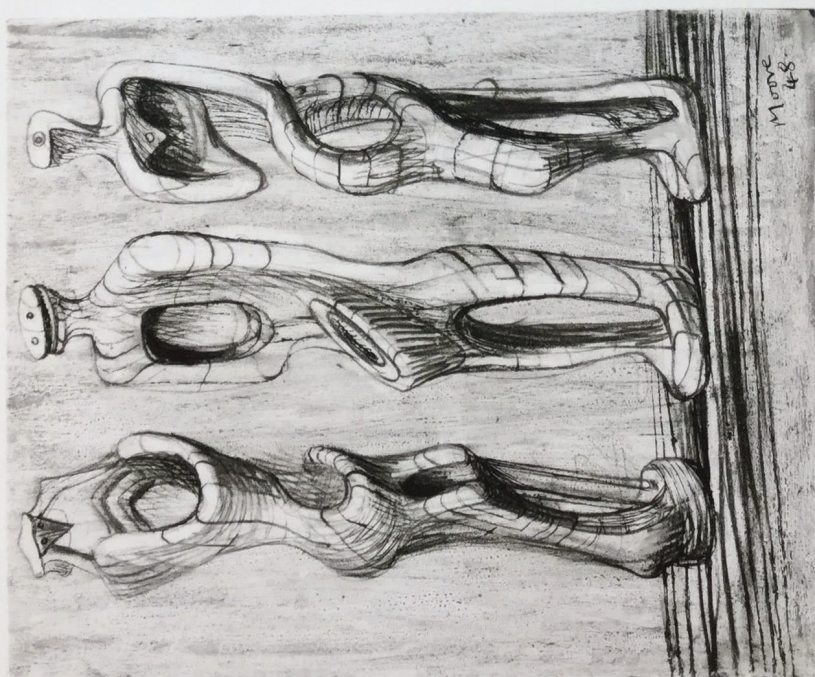


The Museum of Modern Art Archives, NY	Collection:	Series.Folder:
	Valentin	VIII.B.161

AQ42



AQ41





FOR STUDY PURPOSES ONLY. NOT FOR REPRODUCTION.

The Museum of Modern Art Archives, NY	Collection:	Series.Folder:
	Valentin	VIII.B.161

AQ42 12615  
Skb: Standing Women. 1948  
Watercolor & crayon  $11\frac{1}{2} \times 9\frac{1}{2}$ "  
Henry Moore

Coll:

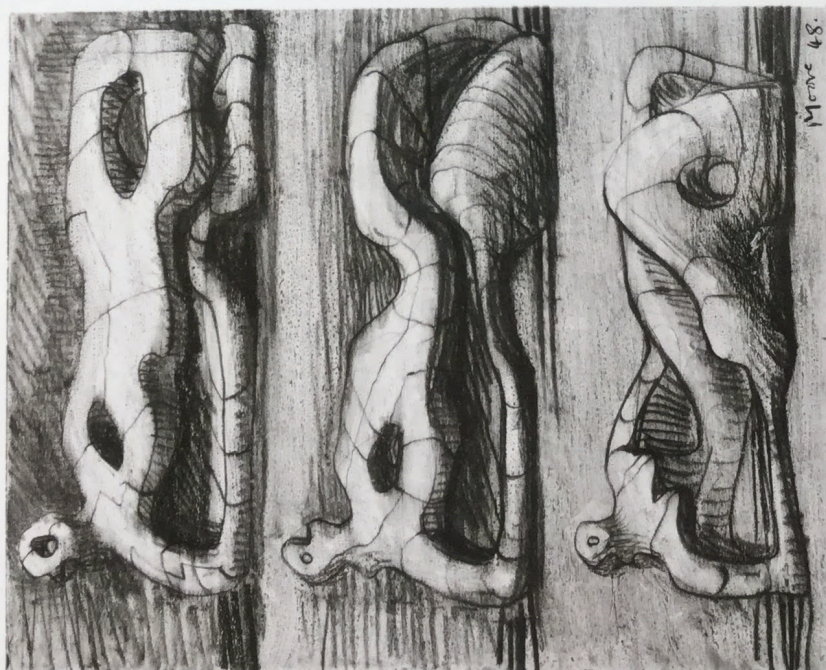
AQ41 12613  
Skb: Three Standing Figures. 1948  
Watercolor & crayon  $11\frac{1}{2} \times 9\frac{1}{2}$ "  
Henry Moore

Coll:



FOR STUDY PURPOSES ONLY. NOT FOR REPRODUCTION.

The Museum of Modern Art Archives, NY	Collection:	Series.Folder:
	Valentin	VIII.B.161





FOR STUDY PURPOSES ONLY. NOT FOR REPRODUCTION.

The Museum of Modern Art Archives, NY	Collection:	Series.Folder:
	Valentin	VIII.B.161

AQ40

12608

Skb: Hands. 1947

Watercolor & crayon  $11\frac{1}{2}$  x  $9\frac{1}{2}$ "

Henry Moore

Coll:

AQ39

12609

Skb: Three Reclining Figures.

1948 Watercolor, crayon  $11\frac{1}{2}$  x  $9\frac{1}{2}$ "

Henry Moore

Coll: