

CONDITIONS OF USE FOR THIS PDF

The images contained within this PDF may be used for private study, scholarship, and research only. They may not be published in print, posted on the internet, or exhibited. They may not be donated, sold, or otherwise transferred to another individual or repository without the written permission of The Museum of Modern Art Archives.

When publication is intended, publication-quality images must be obtained from SCALA Group, the Museum's agent for licensing and distribution of images to outside publishers and researchers.

If you wish to quote any of this material in a publication, an application for permission to publish must be submitted to the MoMA Archives. This stipulation also applies to dissertations and theses. All references to materials should cite the archival collection and folder, and acknowledge "The Museum of Modern Art Archives, New York."

Whether publishing an image or quoting text, you are responsible for obtaining any consents or permissions which may be necessary in connection with any use of the archival materials, including, without limitation, any necessary authorizations from the copyright holder thereof or from any individual depicted therein.

In requesting and accepting this reproduction, you are agreeing to indemnify and hold harmless The Museum of Modern Art, its agents and employees against all claims, demands, costs and expenses incurred by copyright infringement or any other legal or regulatory cause of action arising from the use of this material.

NOTICE: WARNING CONCERNING COPYRIGHT RESTRICTIONS

The copyright law of the United States (Title 17, United States Code) governs the making of photocopies or other reproductions of copyrighted material. Under certain conditions specified in the law, libraries and archives are authorized to furnish a photocopy or other reproduction. One of these specified conditions is that the photocopy or reproduction is not to be "used for any purpose other than private study, scholarship, or research." If a user makes a request for, or later uses, a photocopy or reproduction for purposes in excess of "fair use," that user may be liable for copyright infringement.

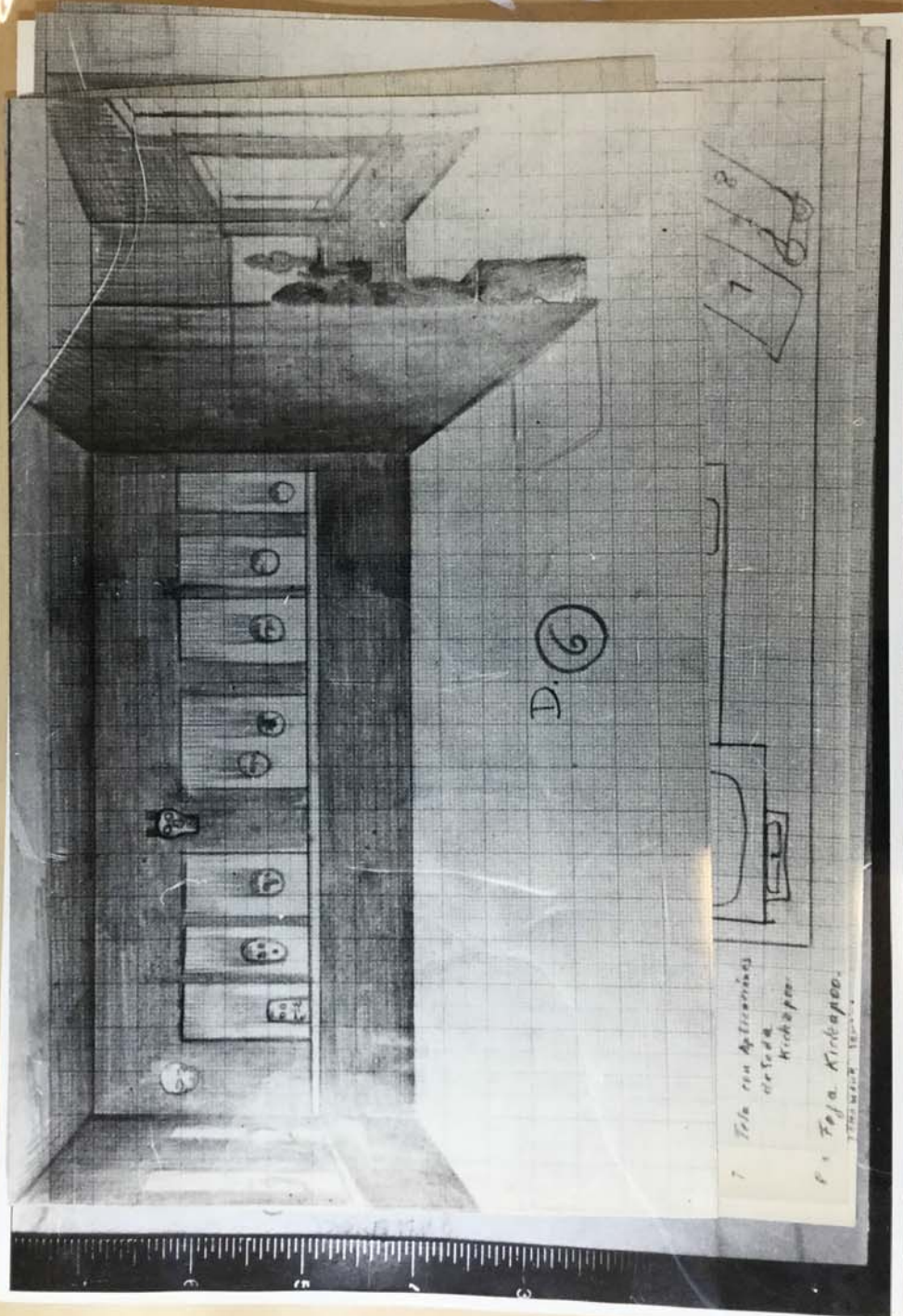
FOR STUDY PURPOSES ONLY. NOT FOR REPRODUCTION.

The Museum of Modern Art Archives, NY	Collection:	Series.Folder:
	RDH	IX.B.1



FOR STUDY PURPOSES ONLY. NOT FOR REPRODUCTION.

The Museum of Modern Art Archives, NY	Collection:	Series.Folder:
	RDH	IX. B. 1

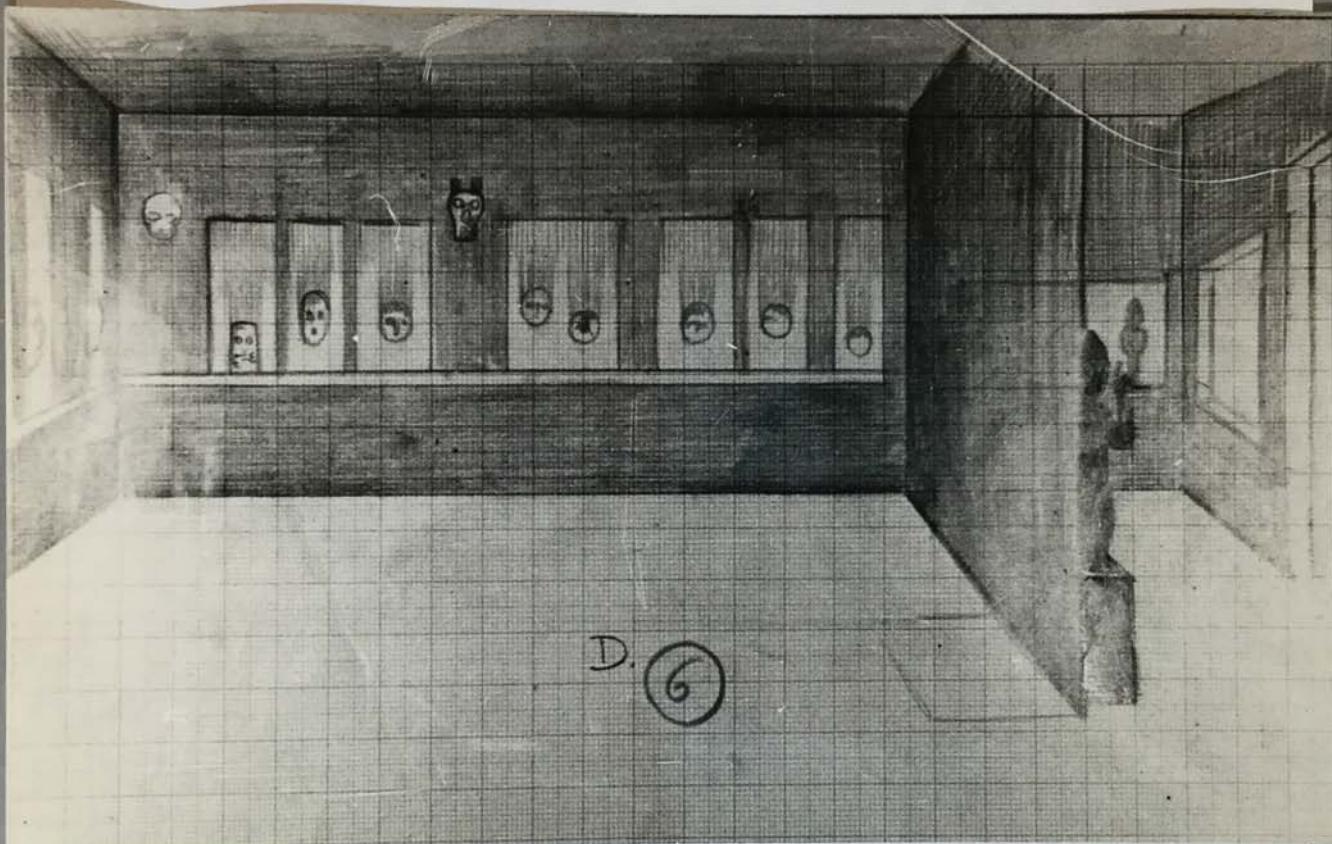


1. Tela em Apicunima
de Tuda
Kichapra

P. Teja. Kichapra.
THE MUSEUM OF MODERN ART

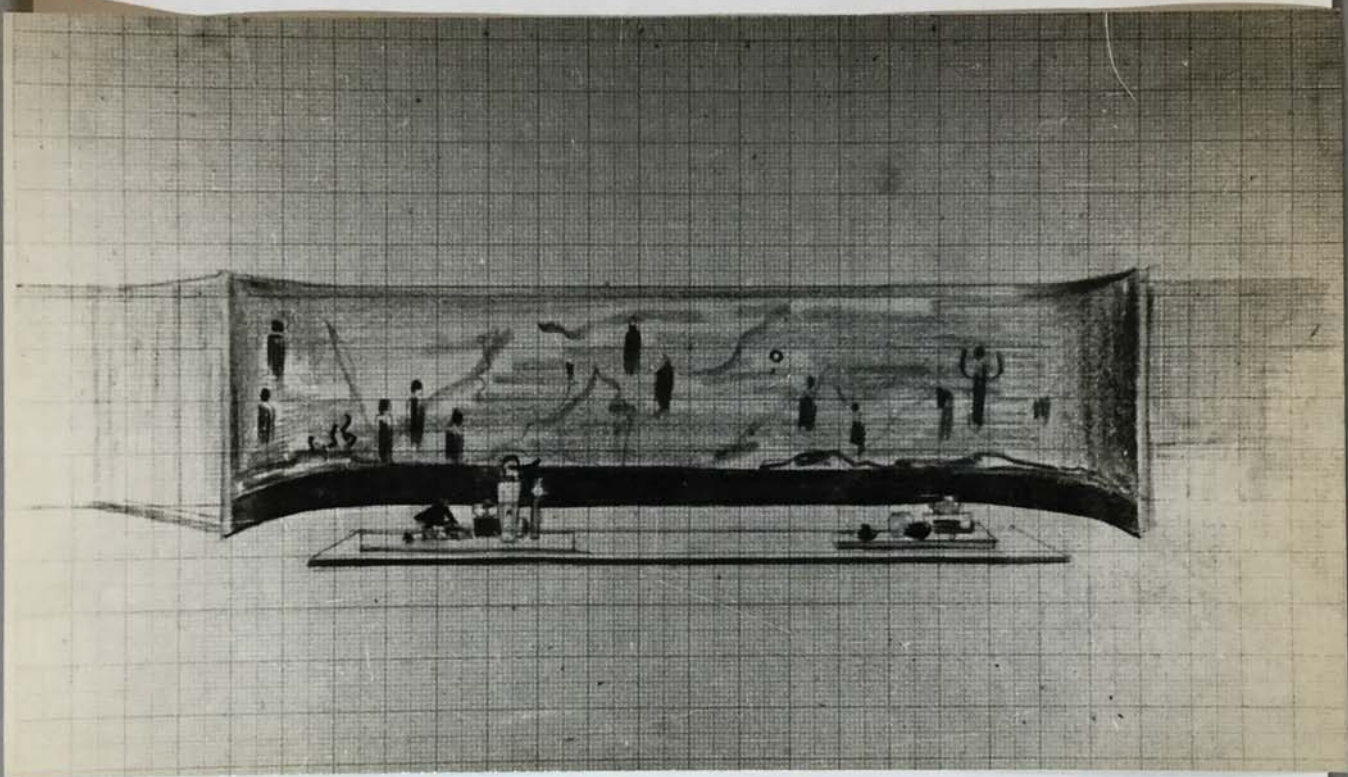
FOR STUDY PURPOSES ONLY. NOT FOR REPRODUCTION.

The Museum of Modern Art Archives, NY	Collection:	Series.Folder:
	RDH	IX. B. 1



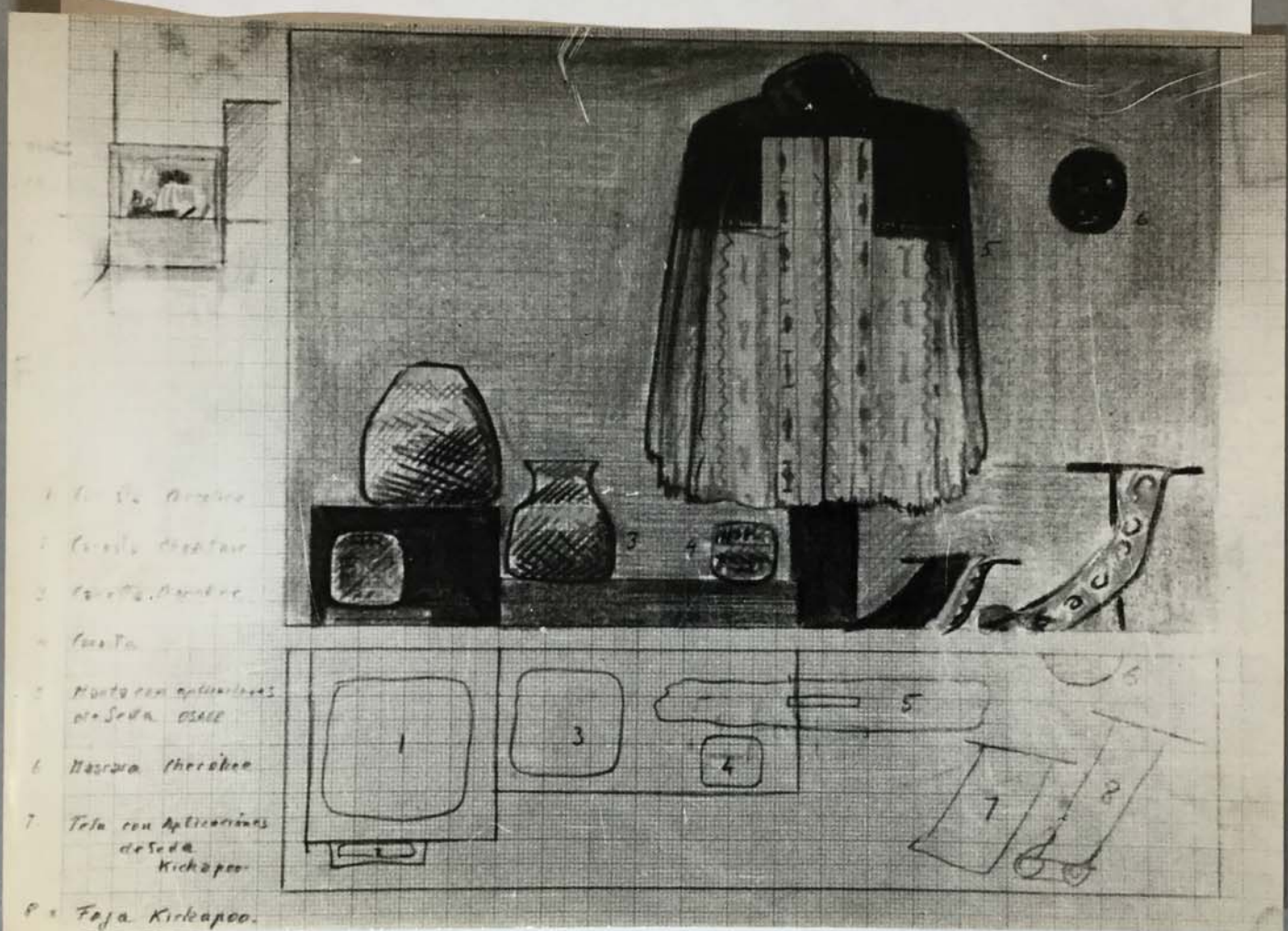
FOR STUDY PURPOSES ONLY. NOT FOR REPRODUCTION.

The Museum of Modern Art Archives, NY	Collection:	Series.Folder:
	RDH	IX. B. 1



FOR STUDY PURPOSES ONLY. NOT FOR REPRODUCTION.

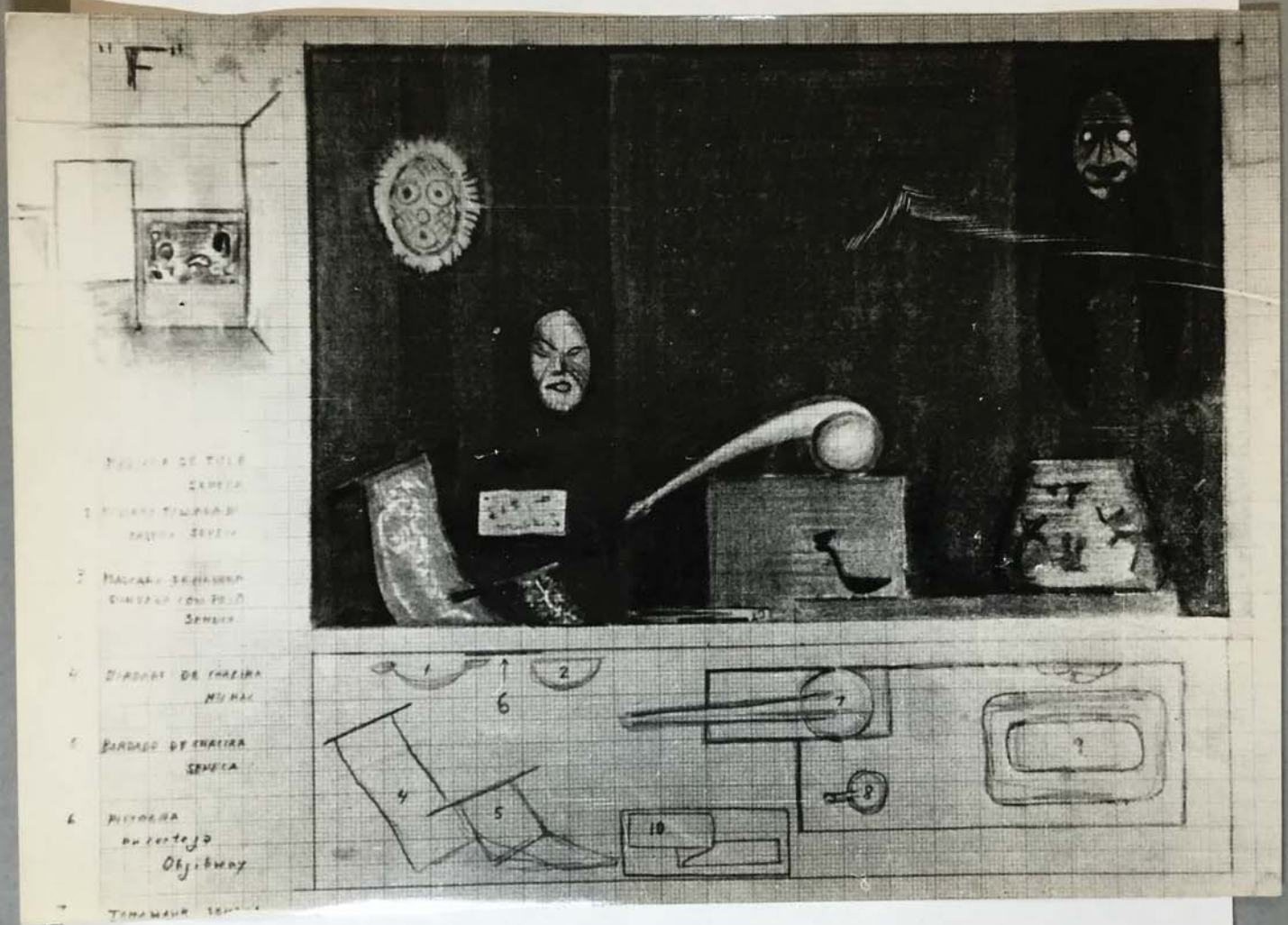
The Museum of Modern Art Archives, NY	Collection:	Series.Folder:
	RDH	IX. B. 1



- 1. Corbata de Algodón
- 2. Cerezo de Algodón
- 3. Cerezo de Algodón
- 4. Corbata
- 5. Manta con aplicaciones de Seda OSAGE
- 6. Mascara de Algodón
- 7. Tela con Aplicaciones de Seda Kichapoo
- 8. Faja Kichapoo

FOR STUDY PURPOSES ONLY. NOT FOR REPRODUCTION.

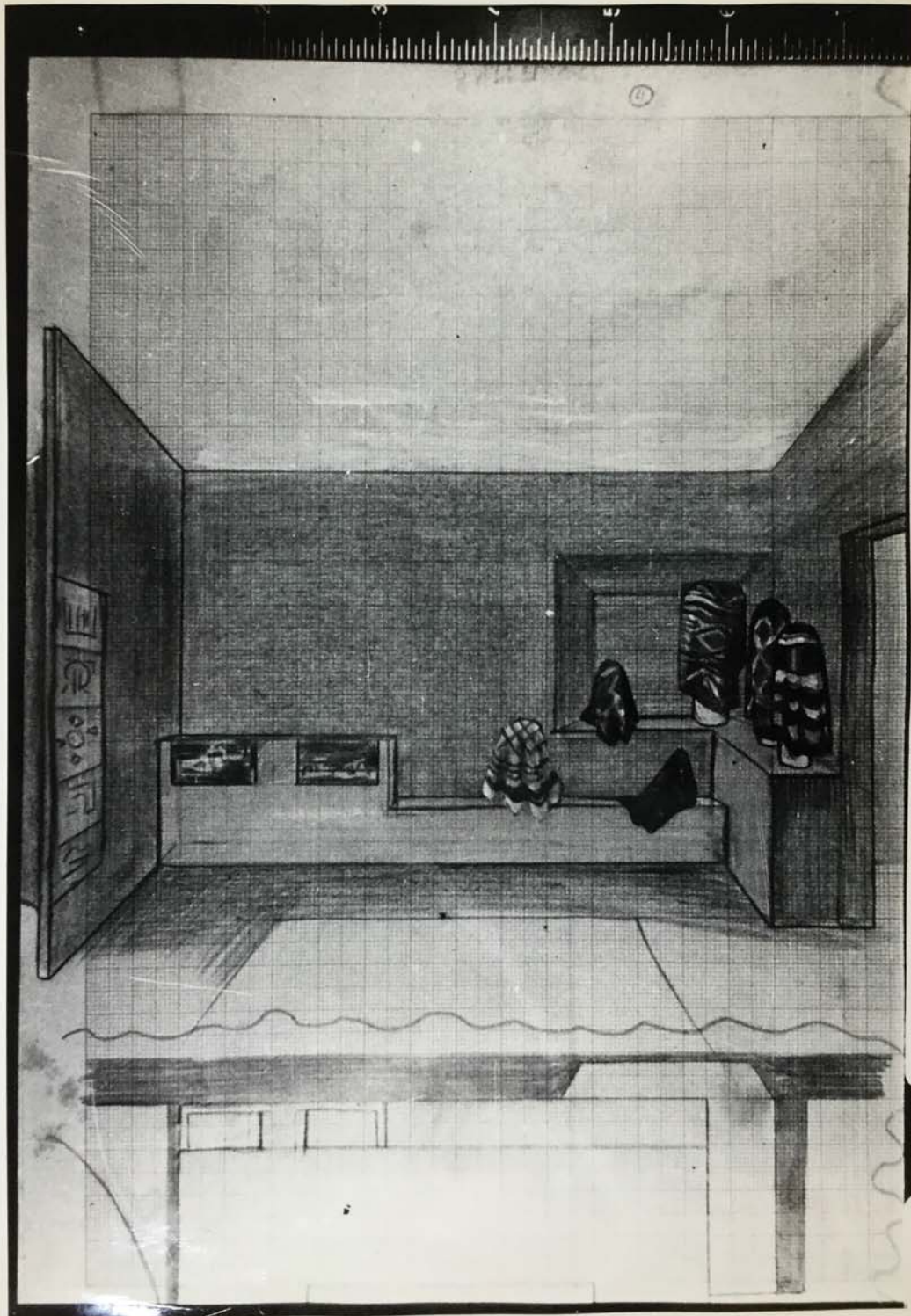
The Museum of Modern Art Archives, NY	Collection:	Series.Folder:
	RDH	IX. B. 1



1. PINTURA DE TELA
 2. PINTURA DE TELA
 3. PINTURA DE TELA
 4. PINTURA DE TELA
 5. PINTURA DE TELA
 6. PINTURA DE TELA
 7. PINTURA DE TELA
 8. PINTURA DE TELA
 9. PINTURA DE TELA
 10. PINTURA DE TELA

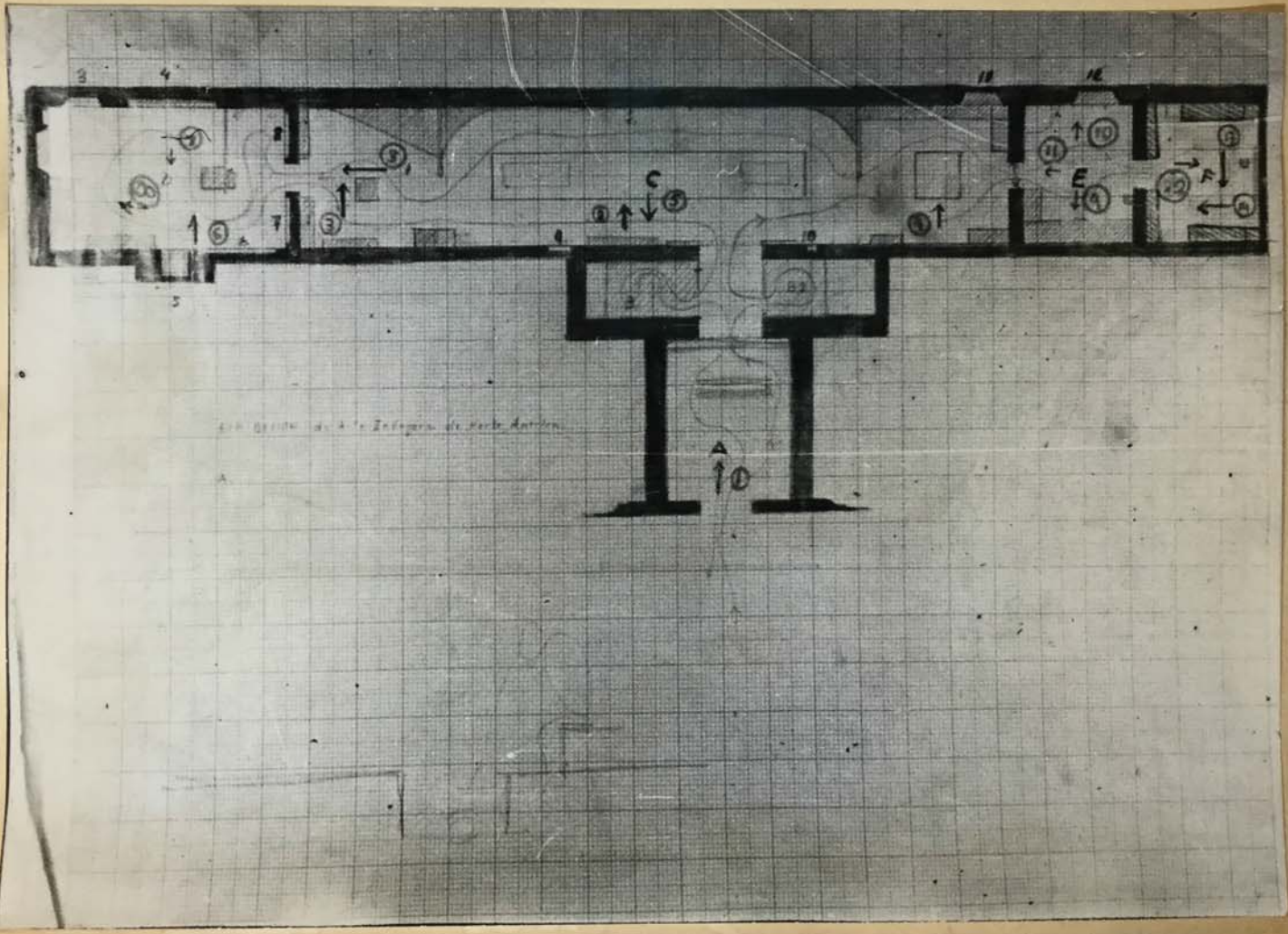
FOR STUDY PURPOSES ONLY. NOT FOR REPRODUCTION.

The Museum of Modern Art Archives, NY	Collection:	Series.Folder:
	RDH	IX. B. 1



FOR STUDY PURPOSES ONLY. NOT FOR REPRODUCTION.

The Museum of Modern Art Archives, NY	Collection:	Series.Folder:
	RDH	IX. B. 1



FOR STUDY PURPOSES ONLY. NOT FOR REPRODUCTION.

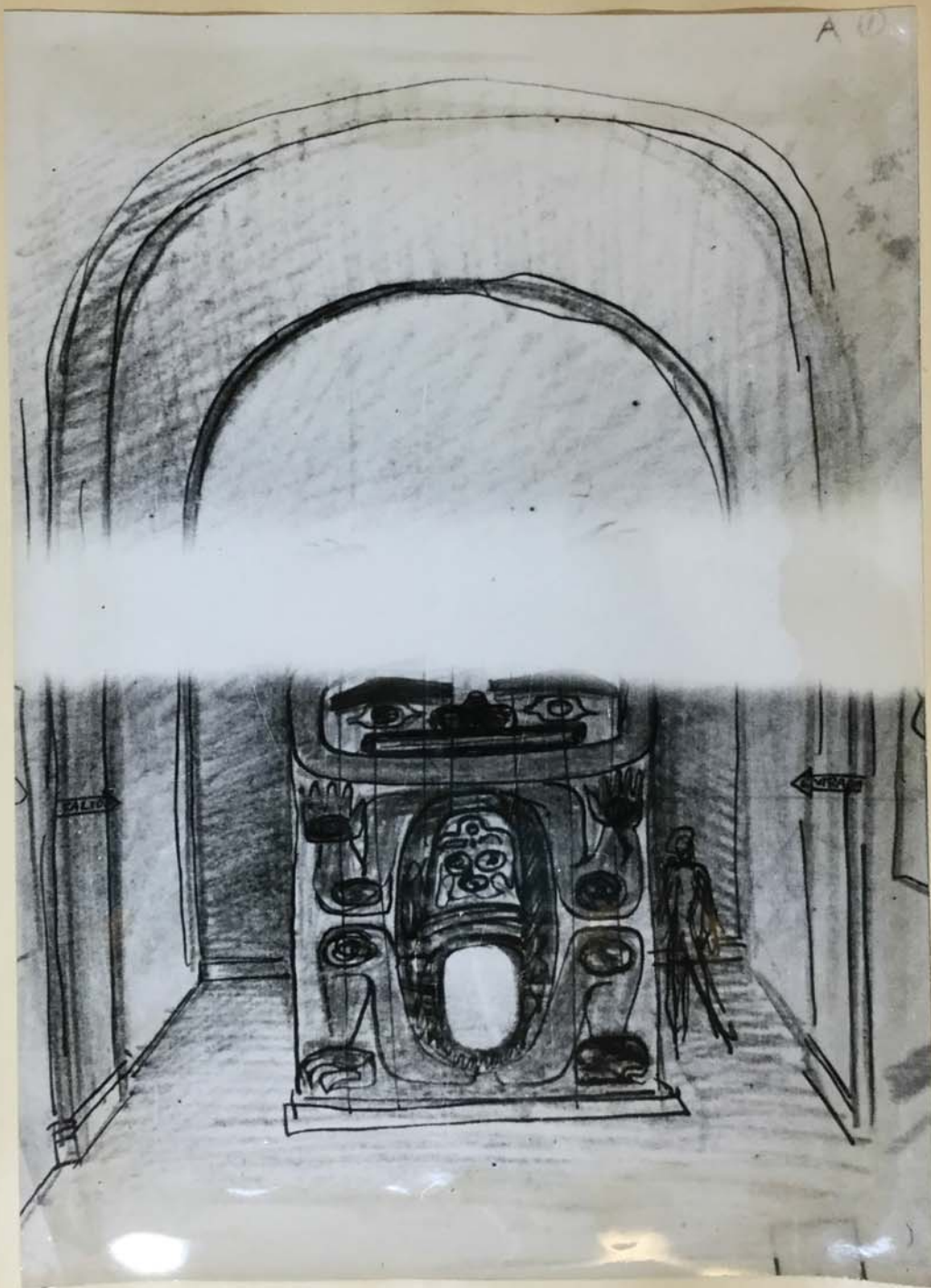
The Museum of Modern Art Archives, NY

Collection:

RDH

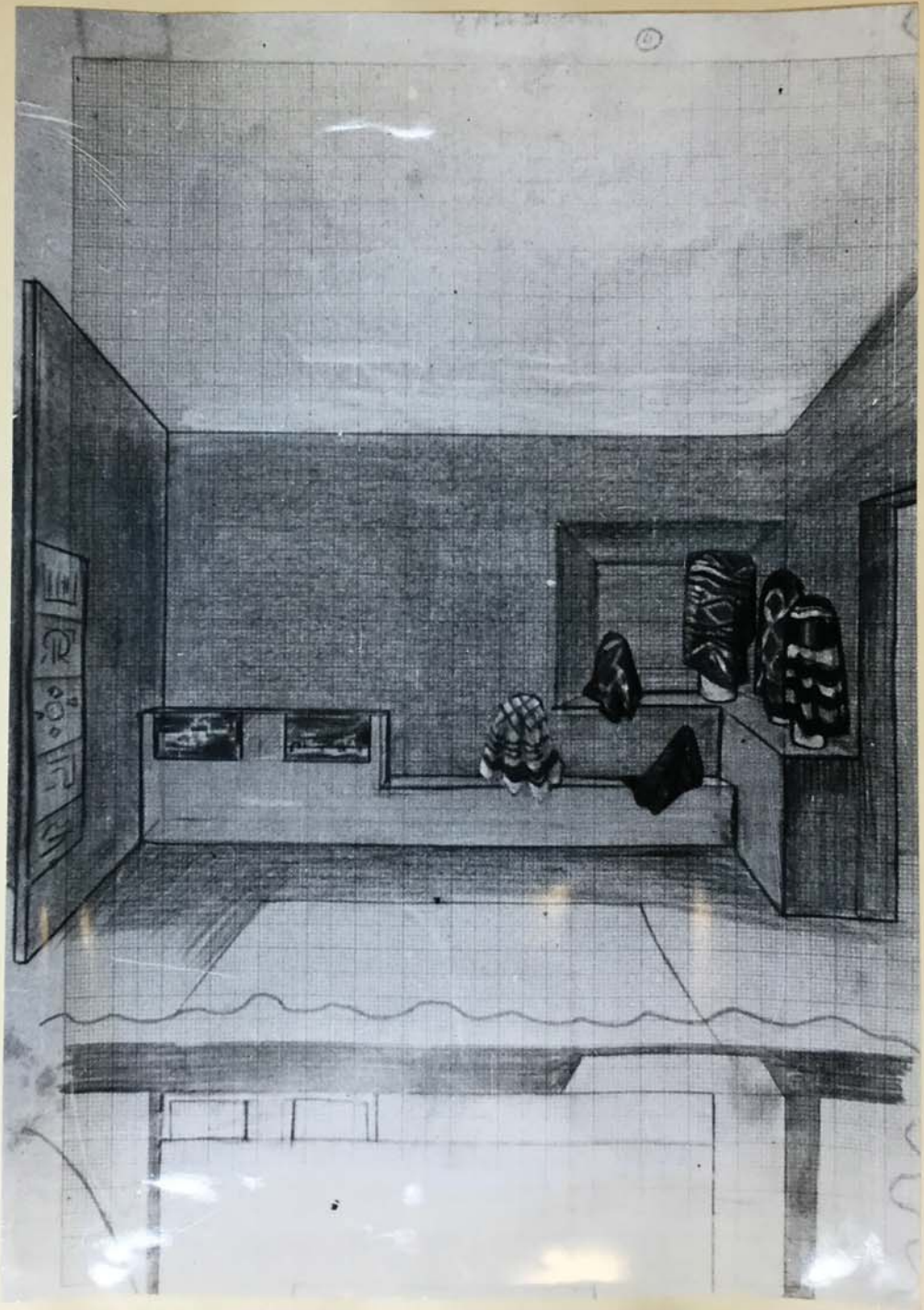
Series.Folder:

IX.B.1



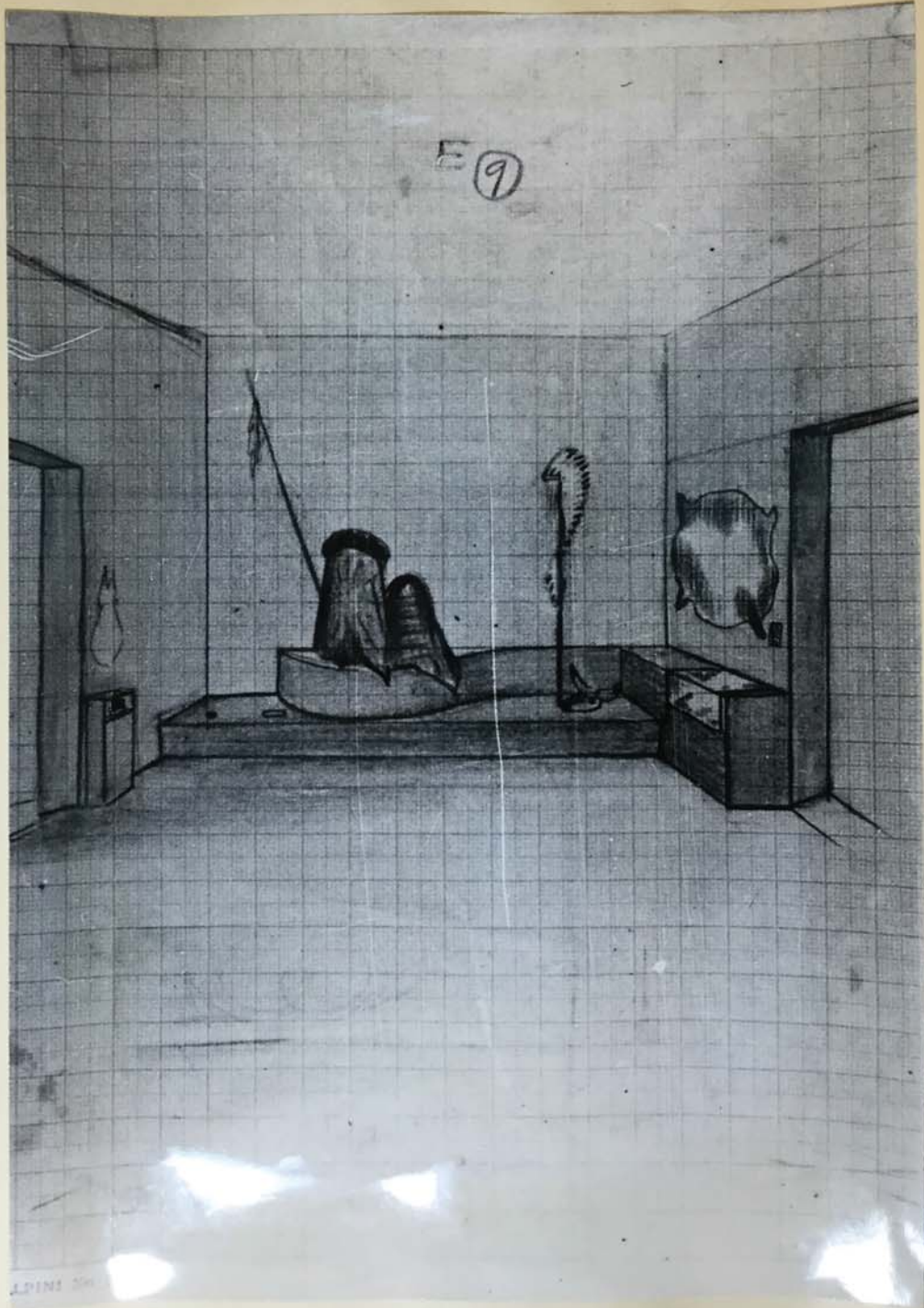
FOR STUDY PURPOSES ONLY. NOT FOR REPRODUCTION.

The Museum of Modern Art Archives, NY	Collection:	Series.Folder:
	RDH	IX. B. 1



FOR STUDY PURPOSES ONLY. NOT FOR REPRODUCTION.

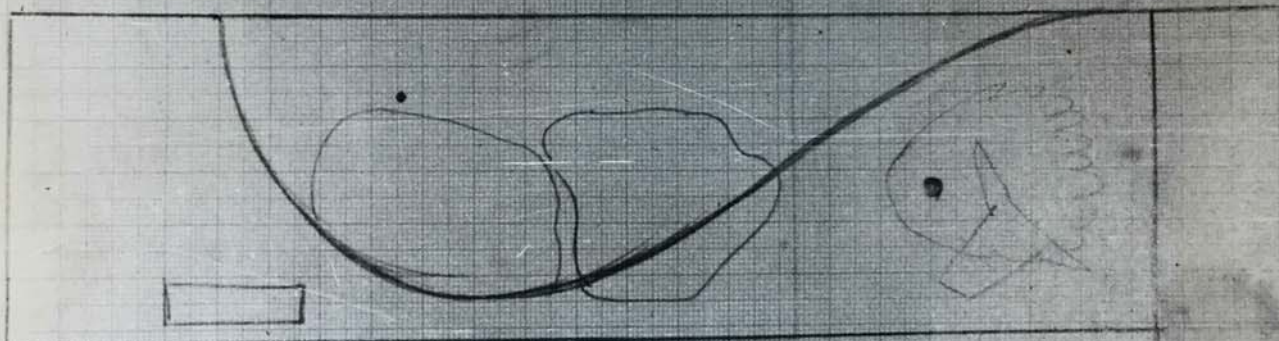
The Museum of Modern Art Archives, NY	Collection:	Series.Folder:
	RDH	IX.B.1



FOR STUDY PURPOSES ONLY. NOT FOR REPRODUCTION.

The Museum of Modern Art Archives, NY	Collection:	Series.Folder:
	RDH	IX. B. 1

GALLERIA E



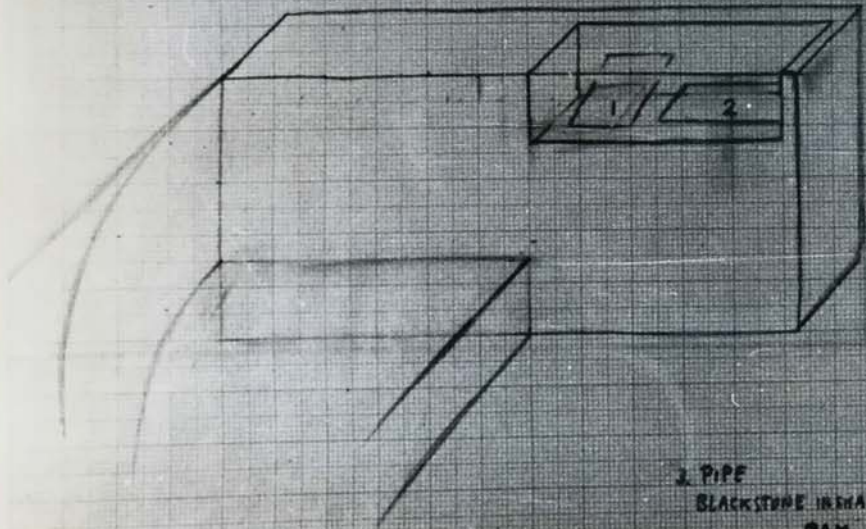
FOR STUDY PURPOSES ONLY. NOT FOR REPRODUCTION.

The Museum of Modern Art Archives, NY	Collection:	Series.Folder:
	RDH	IX.B.1

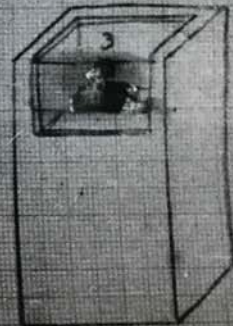
GALLERIA E.

ESCALA 5cm = 1m.

- 1 PORCUPINE QUILL EMBROIDERY
- 2 BEAD WORK

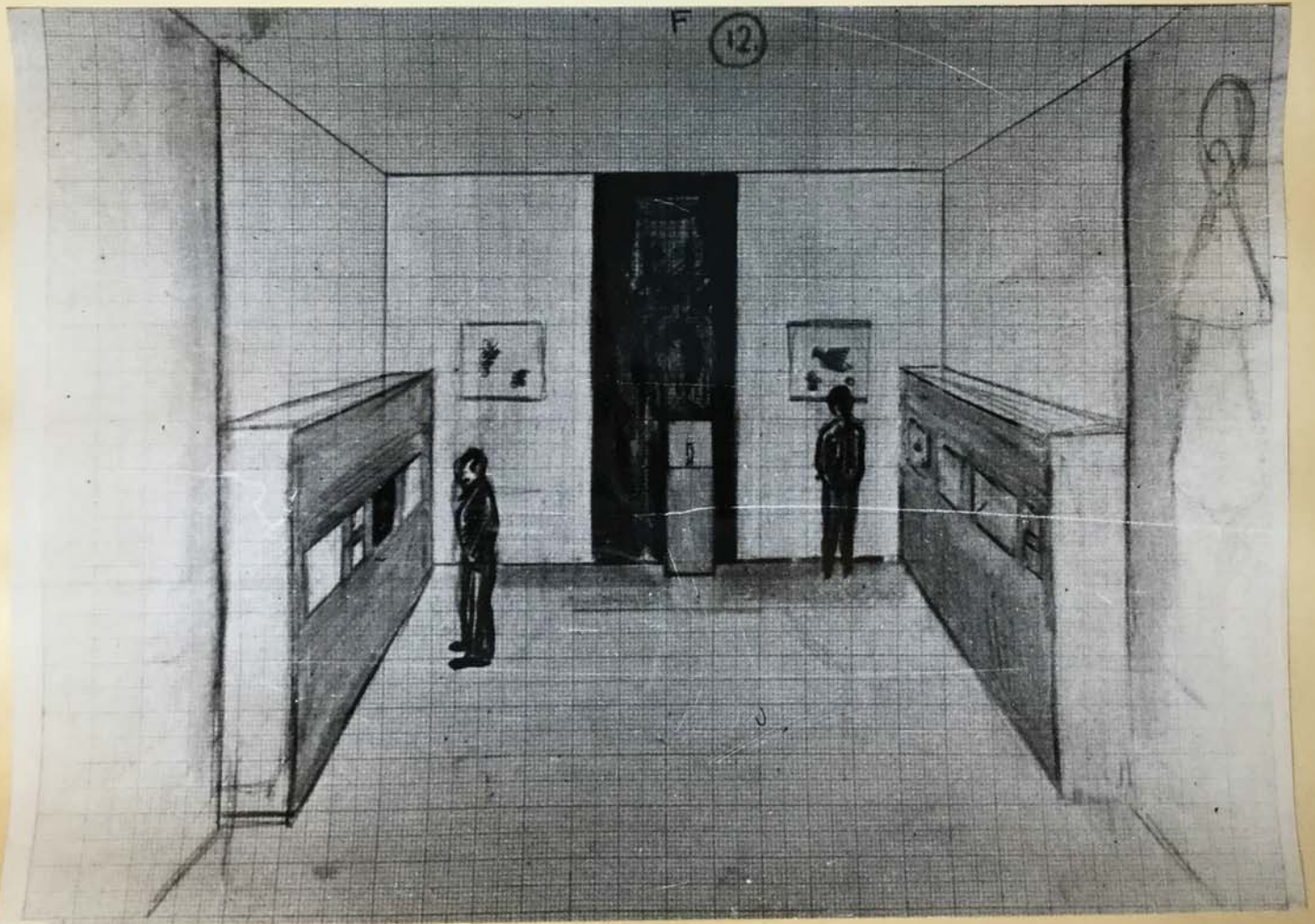


3 PIPE
BLACKSTONE IN SHAPE OF
RAM.



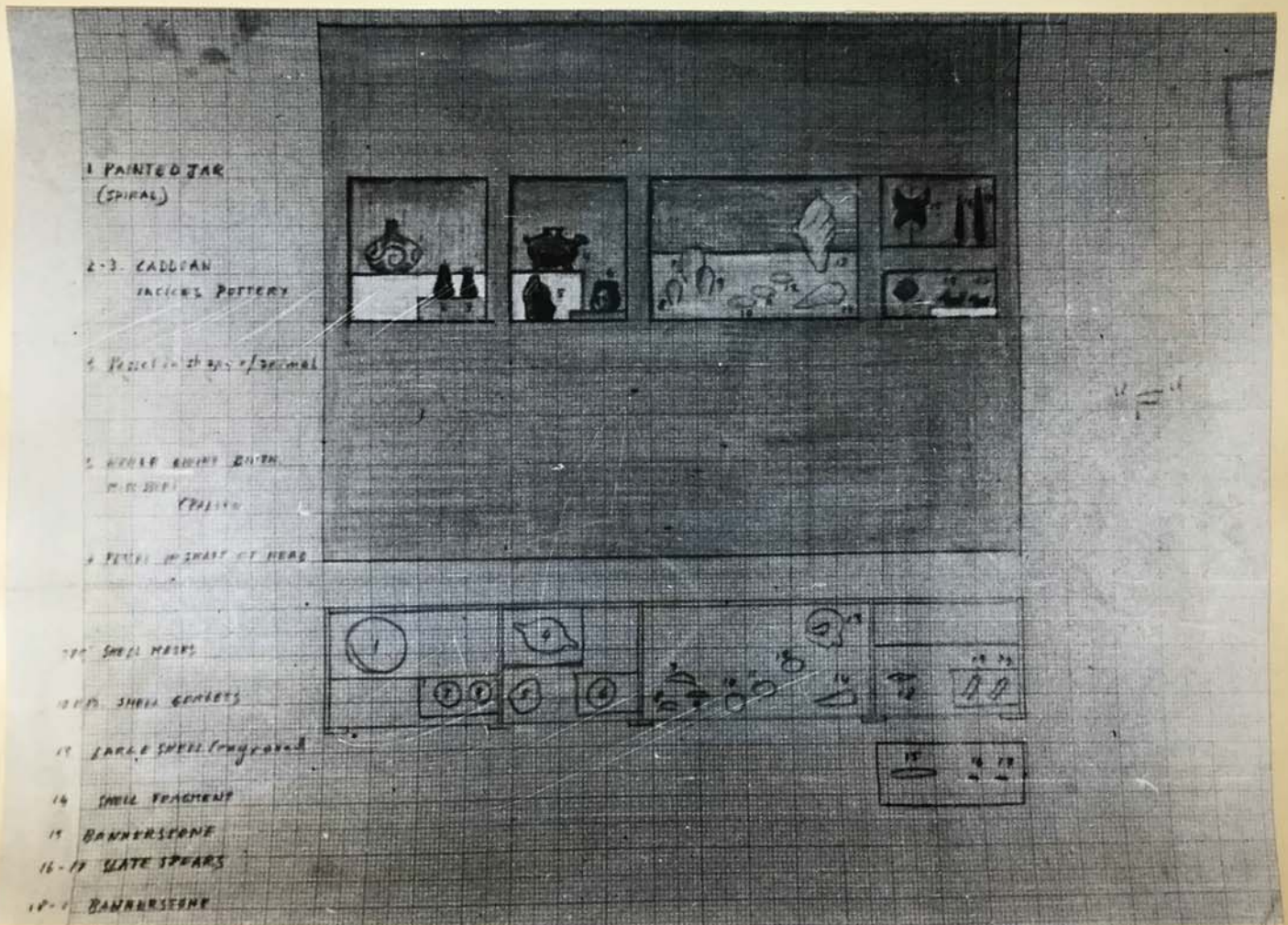
FOR STUDY PURPOSES ONLY. NOT FOR REPRODUCTION.

The Museum of Modern Art Archives, NY	Collection:	Series.Folder:
	RDH	IX.B.1



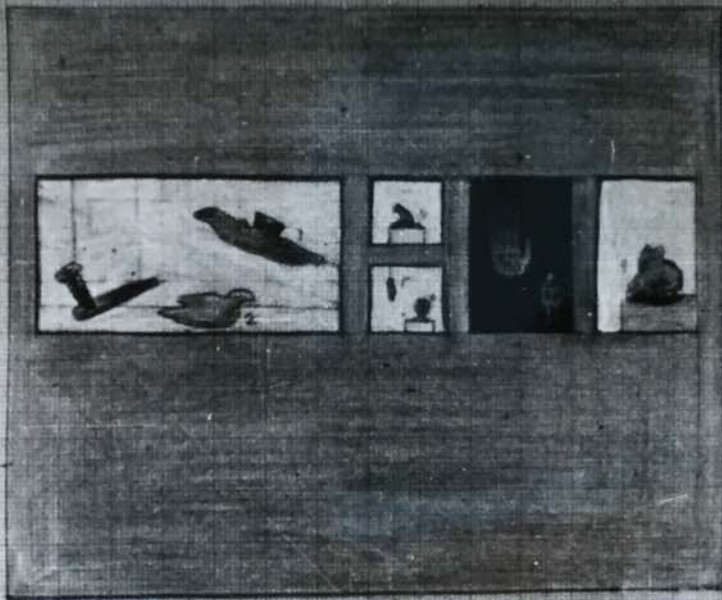
FOR STUDY PURPOSES ONLY. NOT FOR REPRODUCTION.

The Museum of Modern Art Archives, NY	Collection:	Series.Folder:
	RDH	IX. B. 1

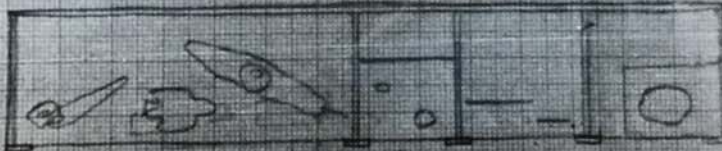


FOR STUDY PURPOSES ONLY. NOT FOR REPRODUCTION.

The Museum of Modern Art Archives, NY	Collection:	Series.Folder:
	RDH	IX.B.1

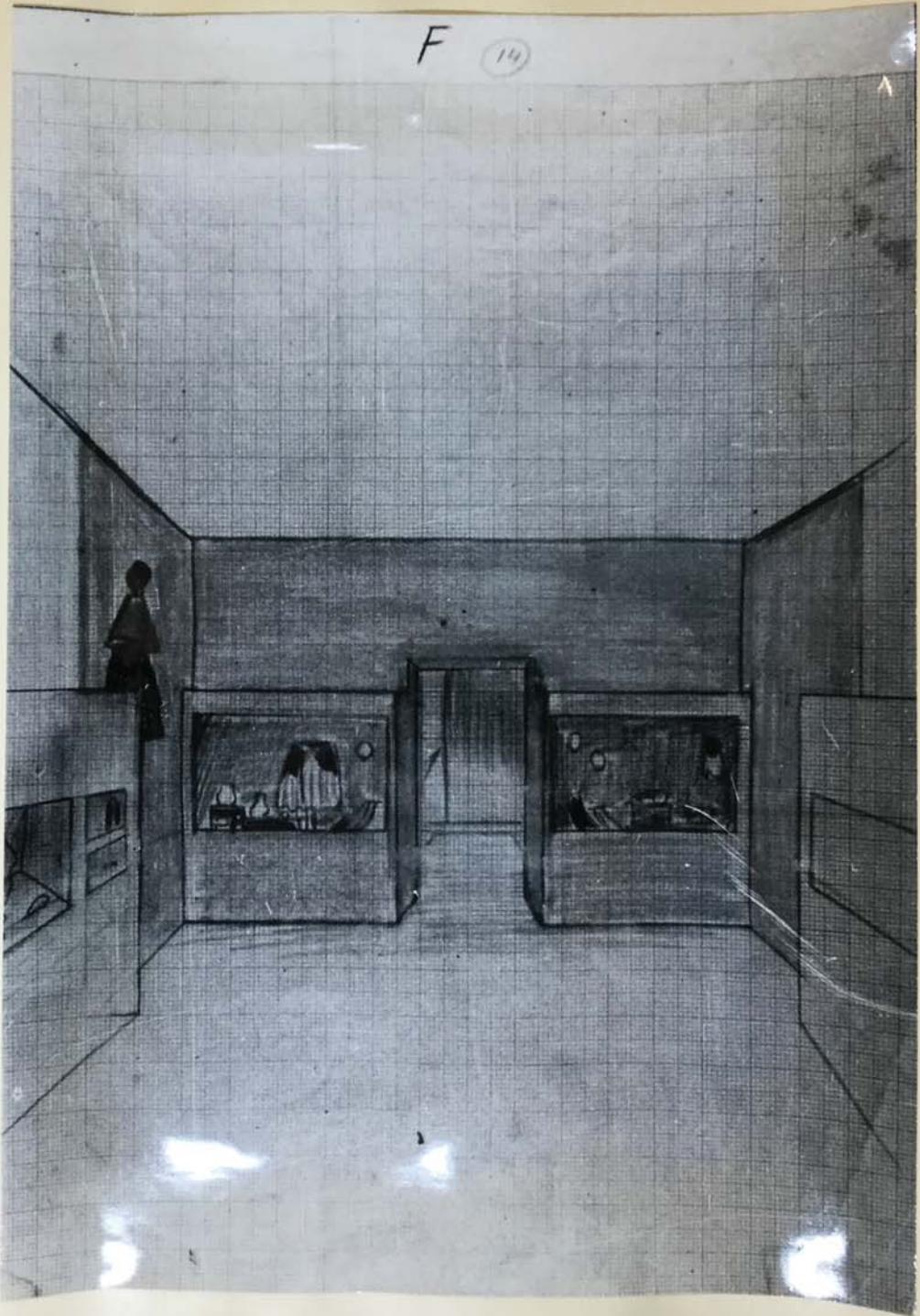


1. WINDOW
2. DIAL PIPE
3. DIAL PIPE
4. PIPING HEAD
5. BRASS PIPE
6. PIPING HEAD
7. DIA. PIPE
8. DIA. PIPE
9. DIA. PIPE



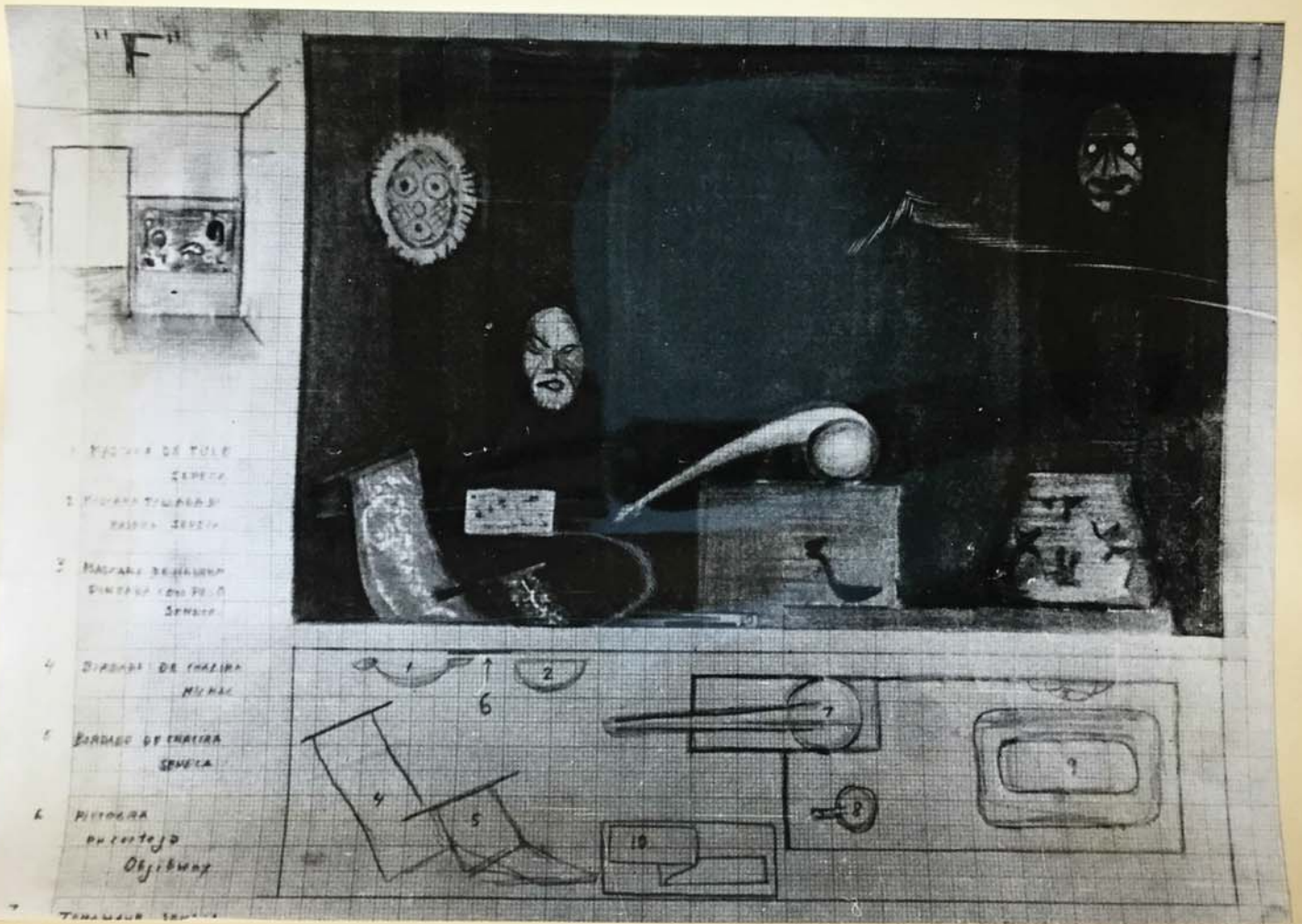
FOR STUDY PURPOSES ONLY. NOT FOR REPRODUCTION.

The Museum of Modern Art Archives, NY	Collection:	Series.Folder:
	RDH	IX.B.1



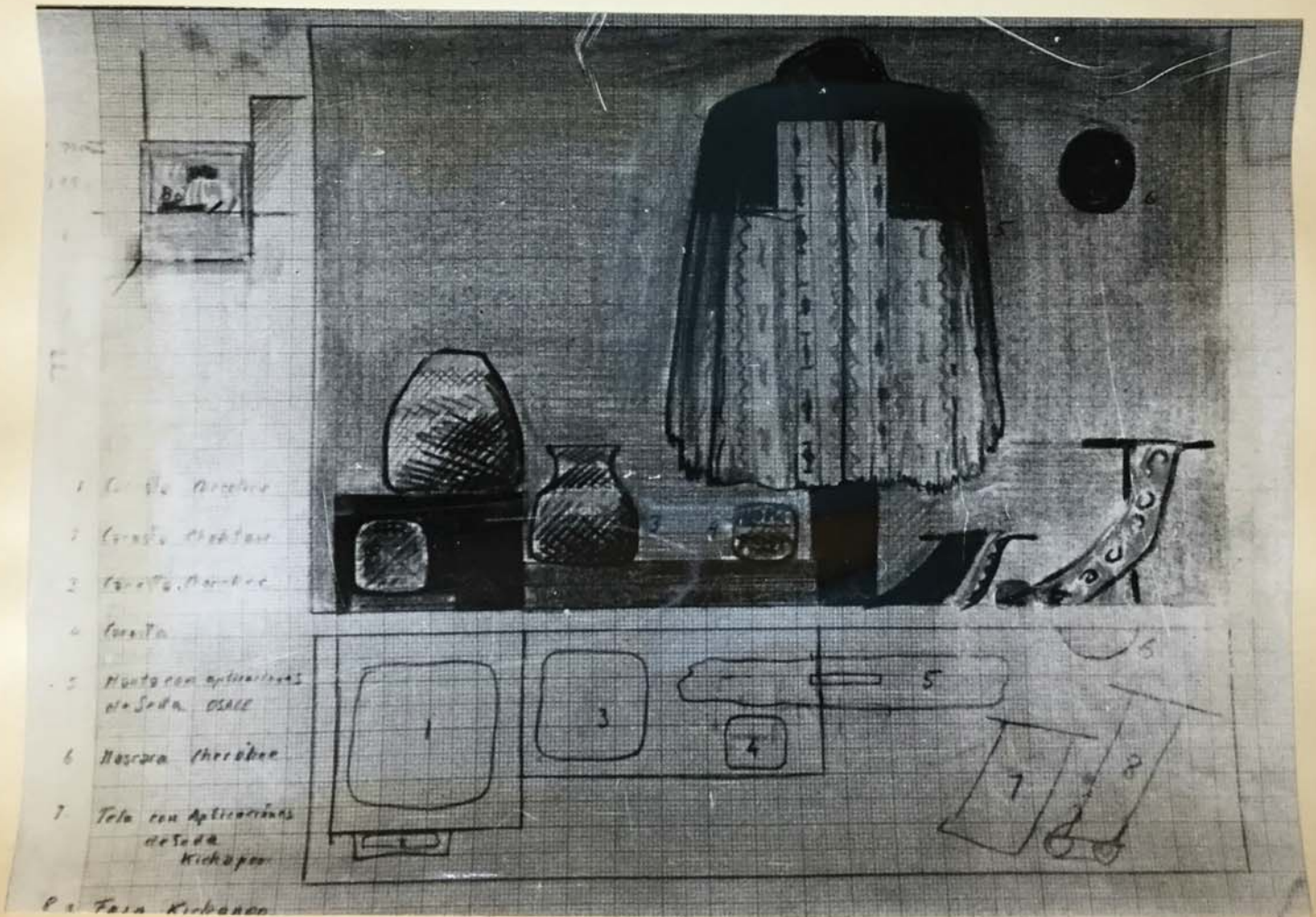
FOR STUDY PURPOSES ONLY. NOT FOR REPRODUCTION.

The Museum of Modern Art Archives, NY	Collection:	Series.Folder:
	RDH	IX. B. 1



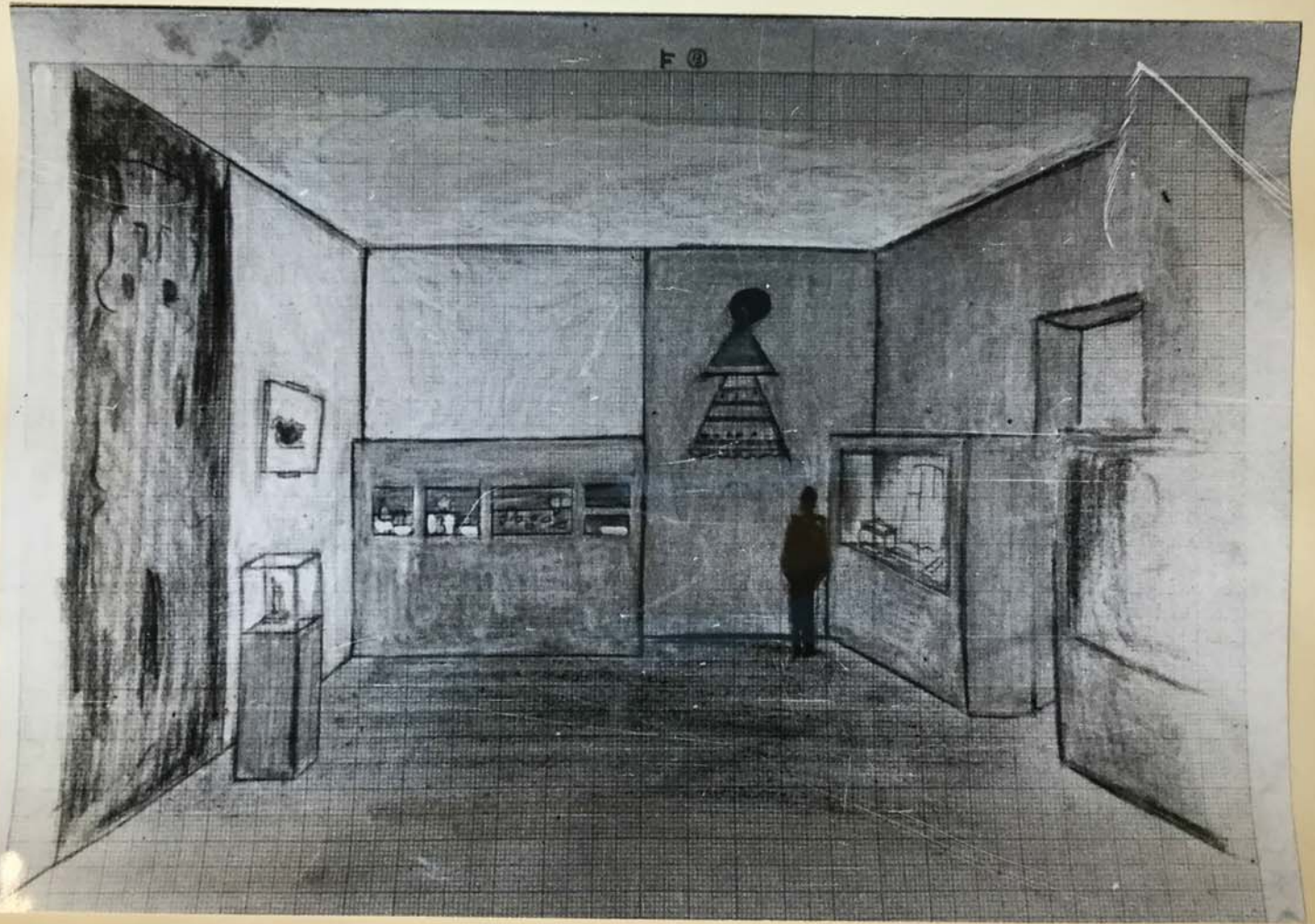
FOR STUDY PURPOSES ONLY. NOT FOR REPRODUCTION.

The Museum of Modern Art Archives, NY	Collection:	Series.Folder:
	RDH	IX. B. 1



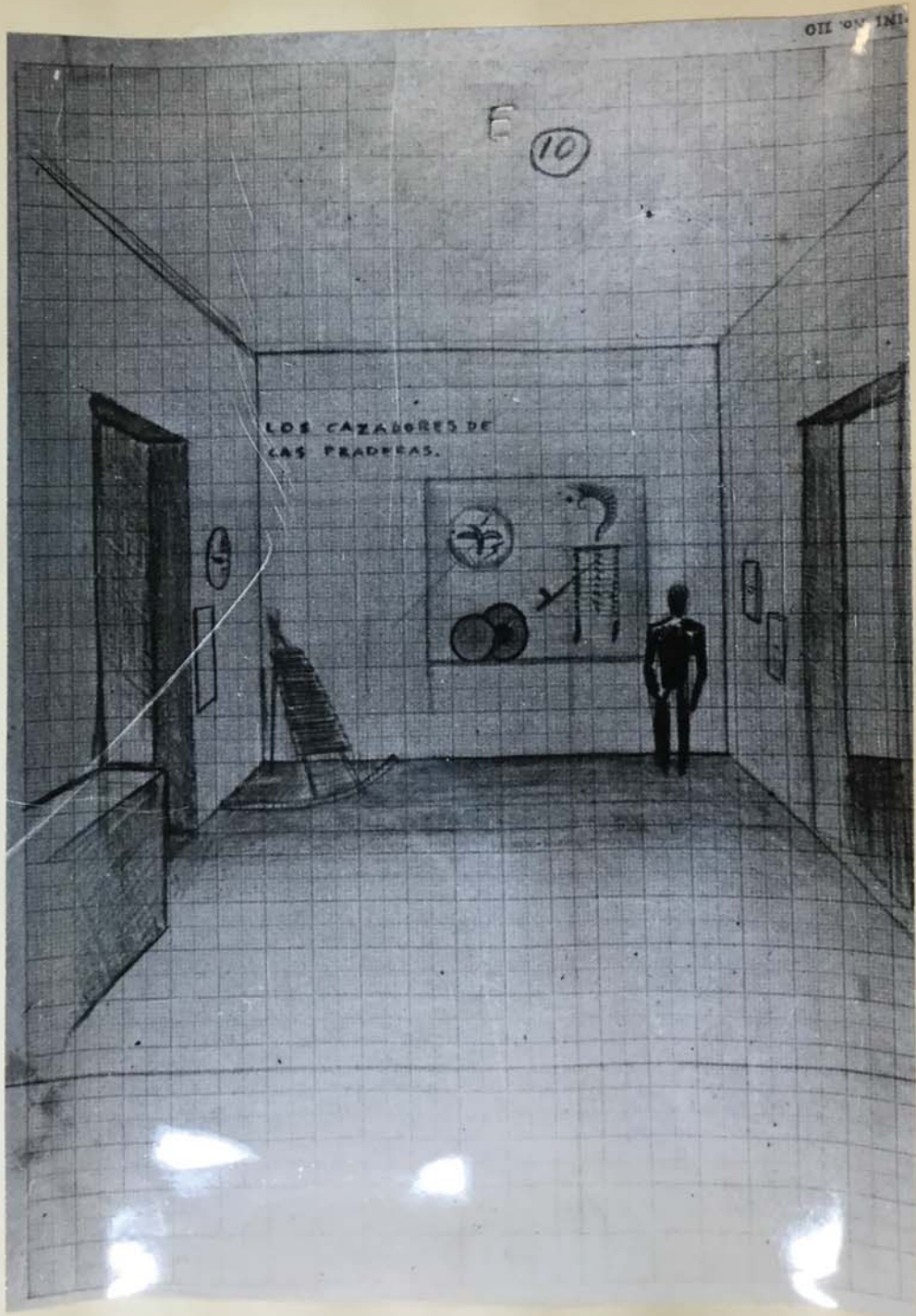
FOR STUDY PURPOSES ONLY. NOT FOR REPRODUCTION.

The Museum of Modern Art Archives, NY	Collection:	Series.Folder:
	RDH	IX.B.1



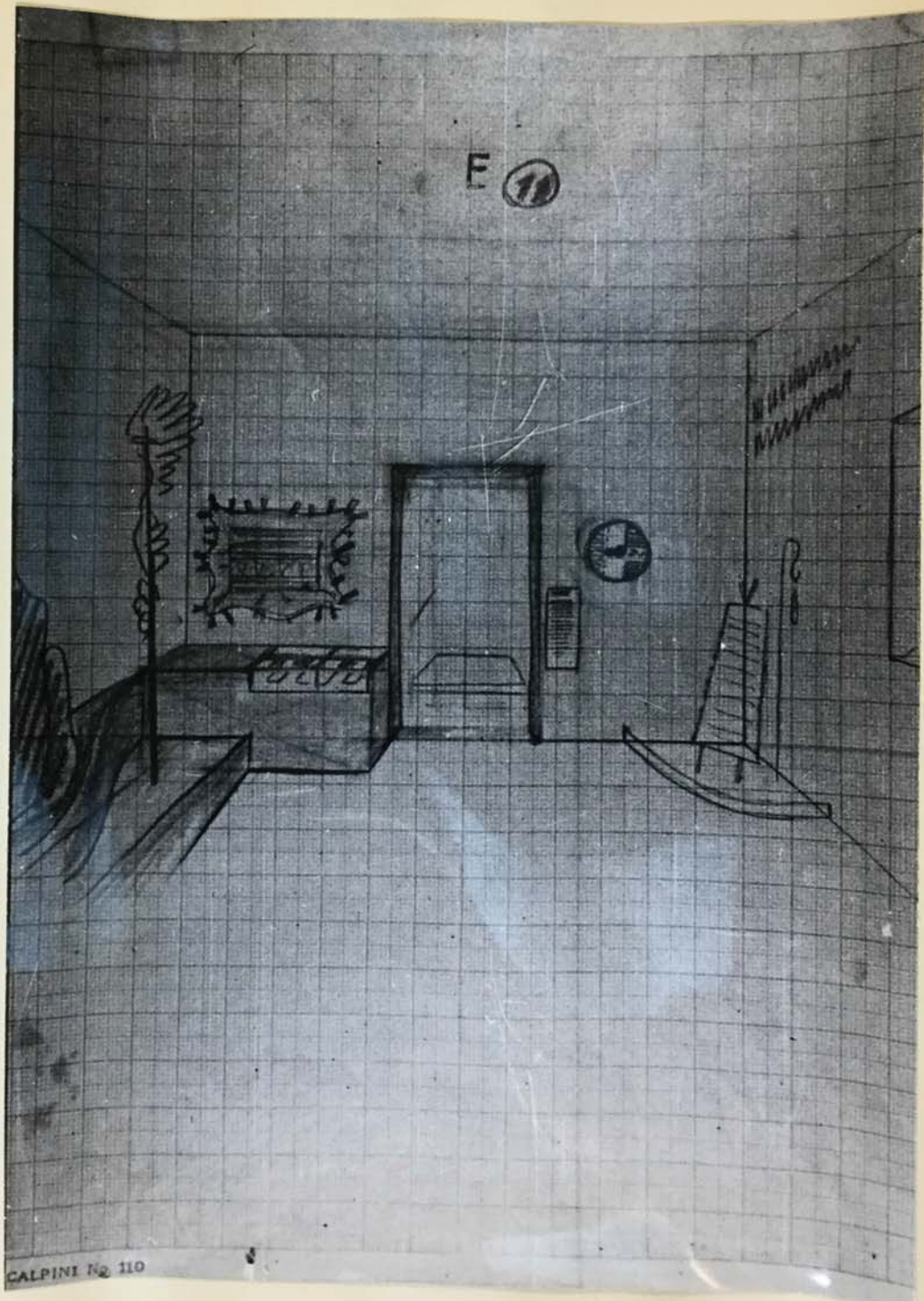
FOR STUDY PURPOSES ONLY. NOT FOR REPRODUCTION.

The Museum of Modern Art Archives, NY	Collection:	Series.Folder:
	RDH	IX. B. 1



FOR STUDY PURPOSES ONLY. NOT FOR REPRODUCTION.

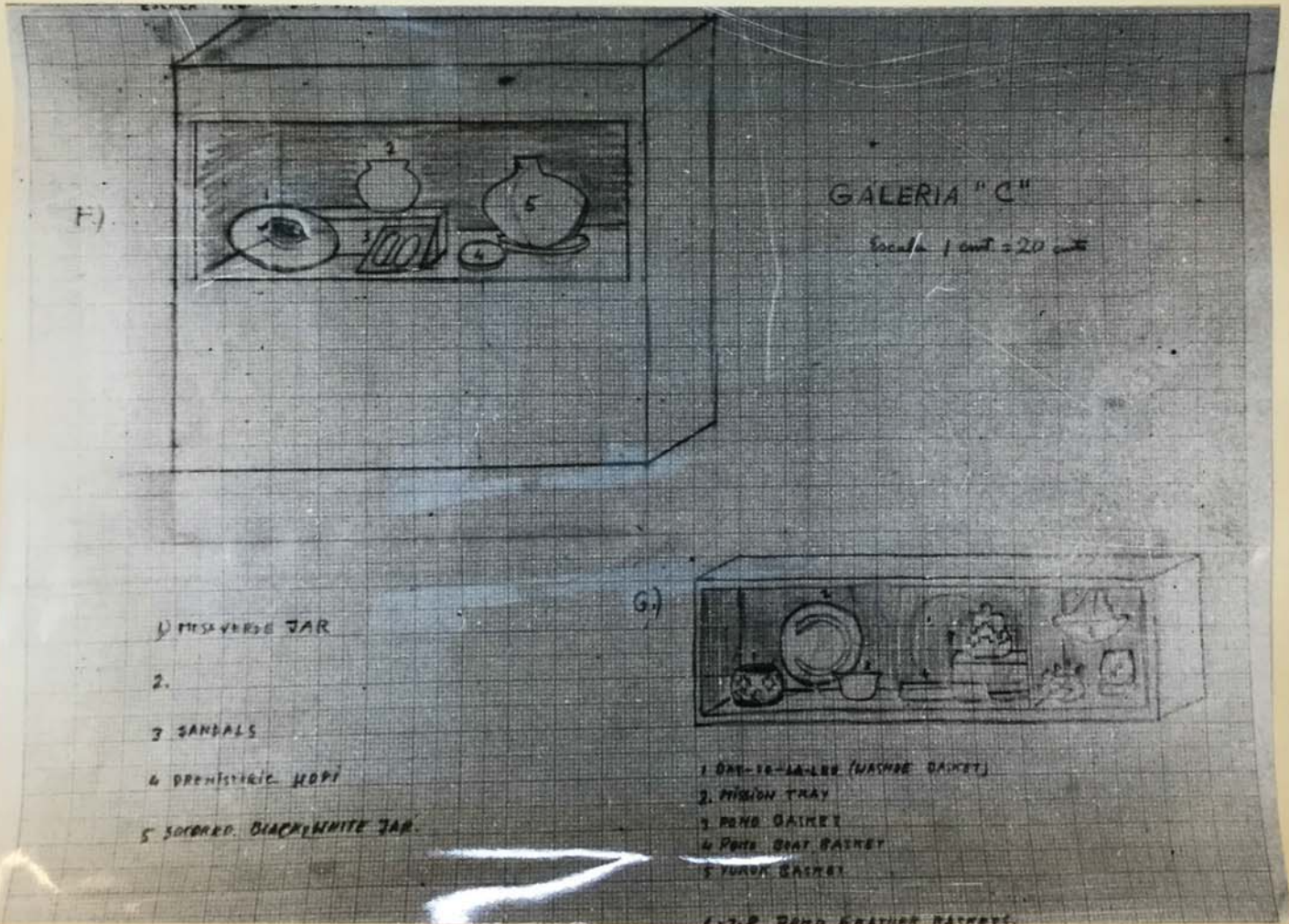
The Museum of Modern Art Archives, NY	Collection:	Series.Folder:
	RDH	IX. B. 1



CALPINI No 110

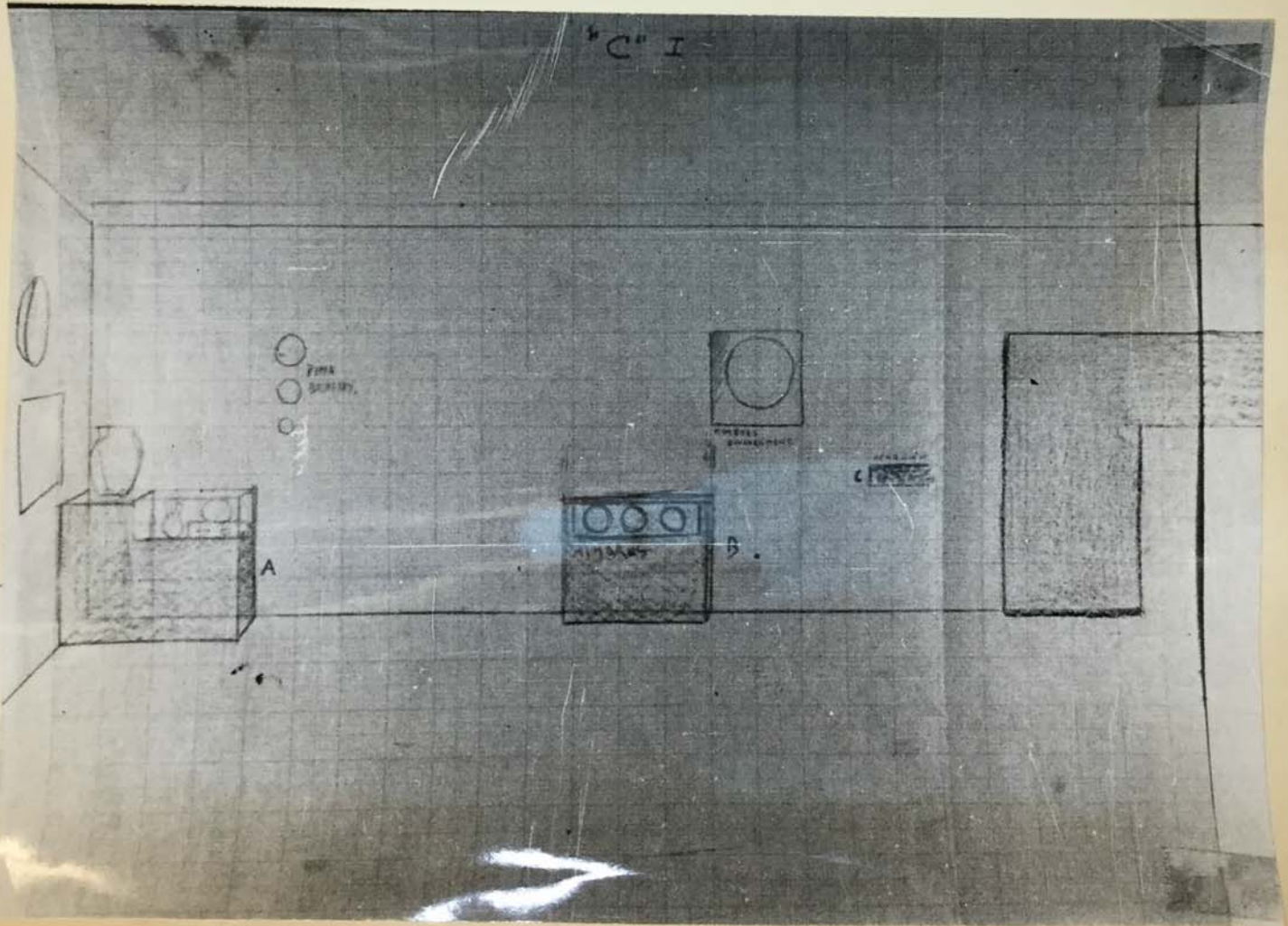
FOR STUDY PURPOSES ONLY. NOT FOR REPRODUCTION.

The Museum of Modern Art Archives, NY	Collection:	Series.Folder:
	RDH	IX. B. 1



FOR STUDY PURPOSES ONLY. NOT FOR REPRODUCTION.

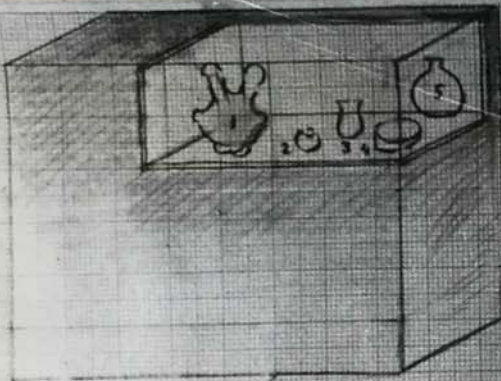
The Museum of Modern Art Archives, NY	Collection:	Series.Folder:
	RDH	IX.B.1



FOR STUDY PURPOSES ONLY. NOT FOR REPRODUCTION.

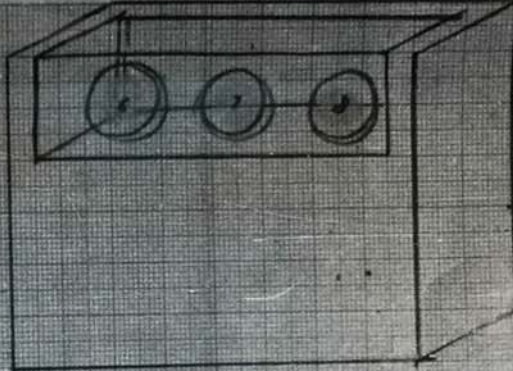
The Museum of Modern Art Archives, NY	Collection:	Series.Folder:
	RDH	IX. B. 1

A.



- 1 MONAVE JAR
- 2 3 4. Red PAPAGO POTTERY
- 5. Buff PAPAGO POTTERY

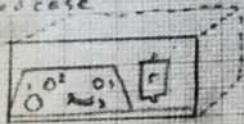
B.



6, 7, 8
MIMBRES BOWLS.

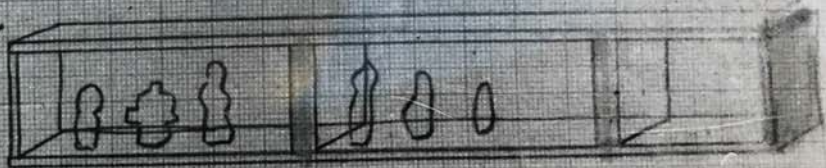
C.

TRAY CASE



- 1-2 SHELL FROGS
- 3. COYOTE SHELL
- 4 Shellring.
- 5 STONE PALETTE

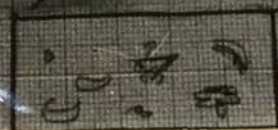
D.



KACHINAS.

GALERIA "C"

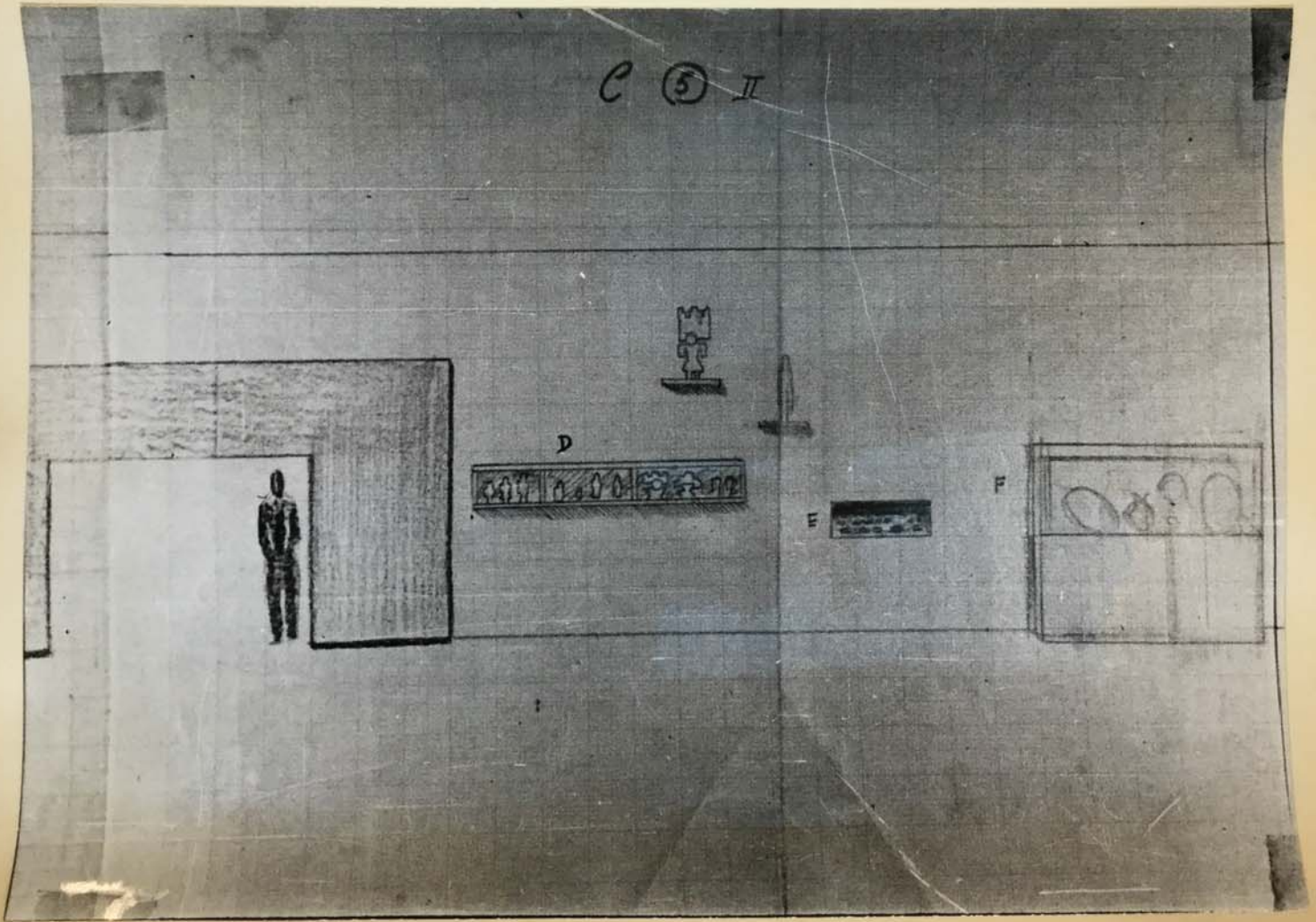
E.



ZUNI JEWELRY

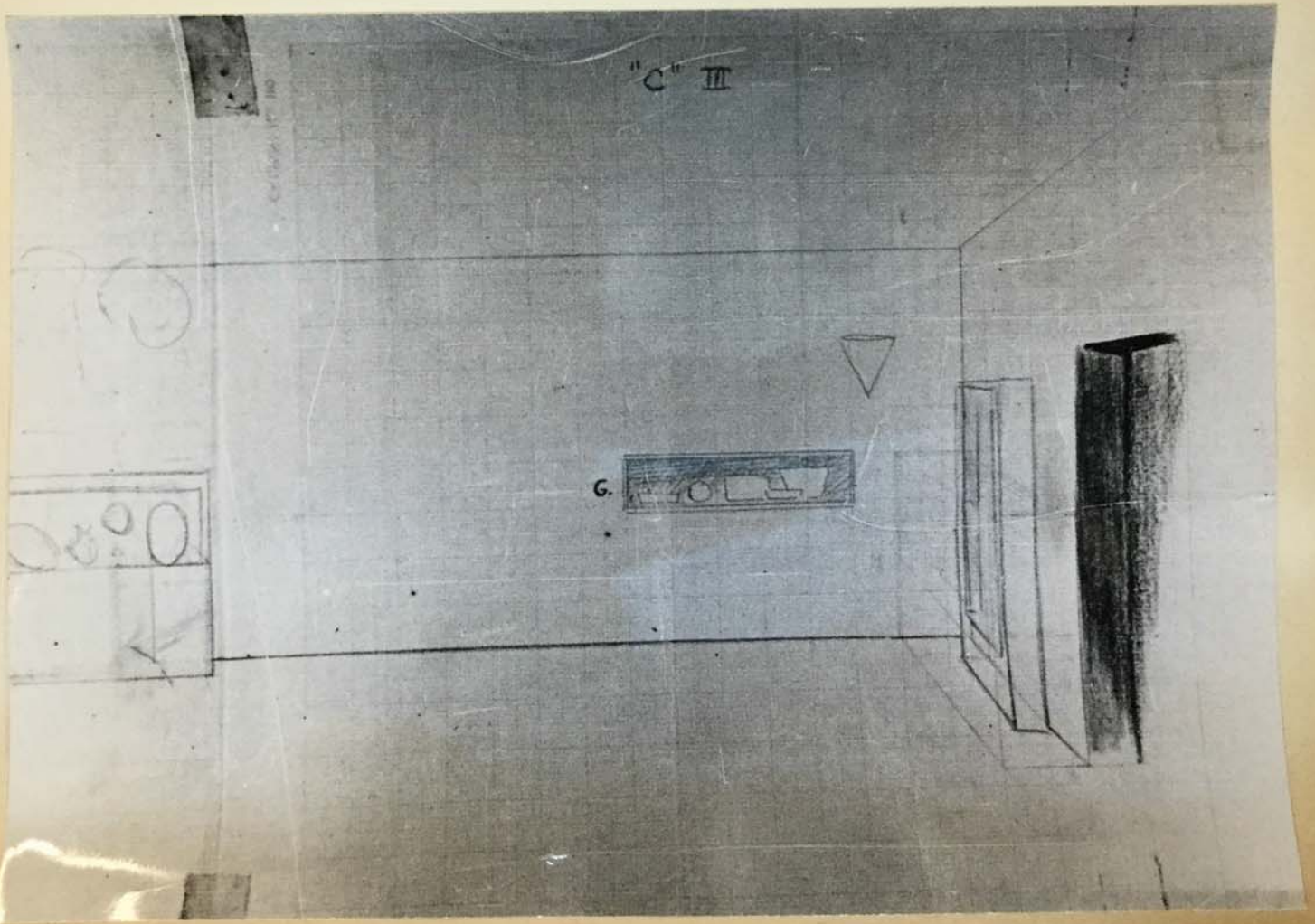
FOR STUDY PURPOSES ONLY. NOT FOR REPRODUCTION.

The Museum of Modern Art Archives, NY	Collection:	Series.Folder:
	RDH	IX. B. 1



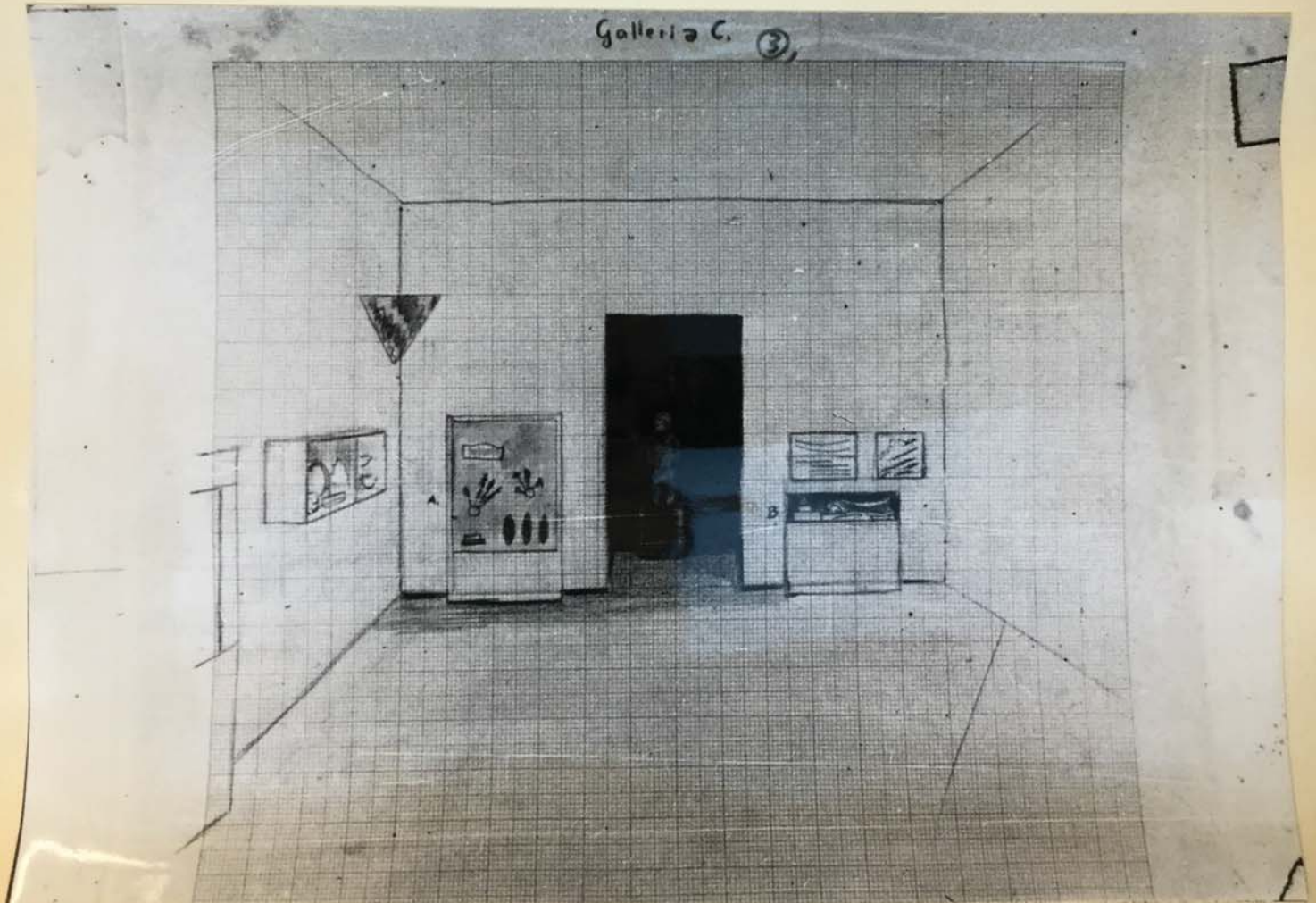
FOR STUDY PURPOSES ONLY. NOT FOR REPRODUCTION.

The Museum of Modern Art Archives, NY	Collection:	Series.Folder:
	RDH	IX. B. 1



FOR STUDY PURPOSES ONLY. NOT FOR REPRODUCTION.

The Museum of Modern Art Archives, NY	Collection:	Series.Folder:
	RDH	IX.B.1



FOR STUDY PURPOSES ONLY. NOT FOR REPRODUCTION.

The Museum of Modern Art Archives, NY

Collection:

RDH

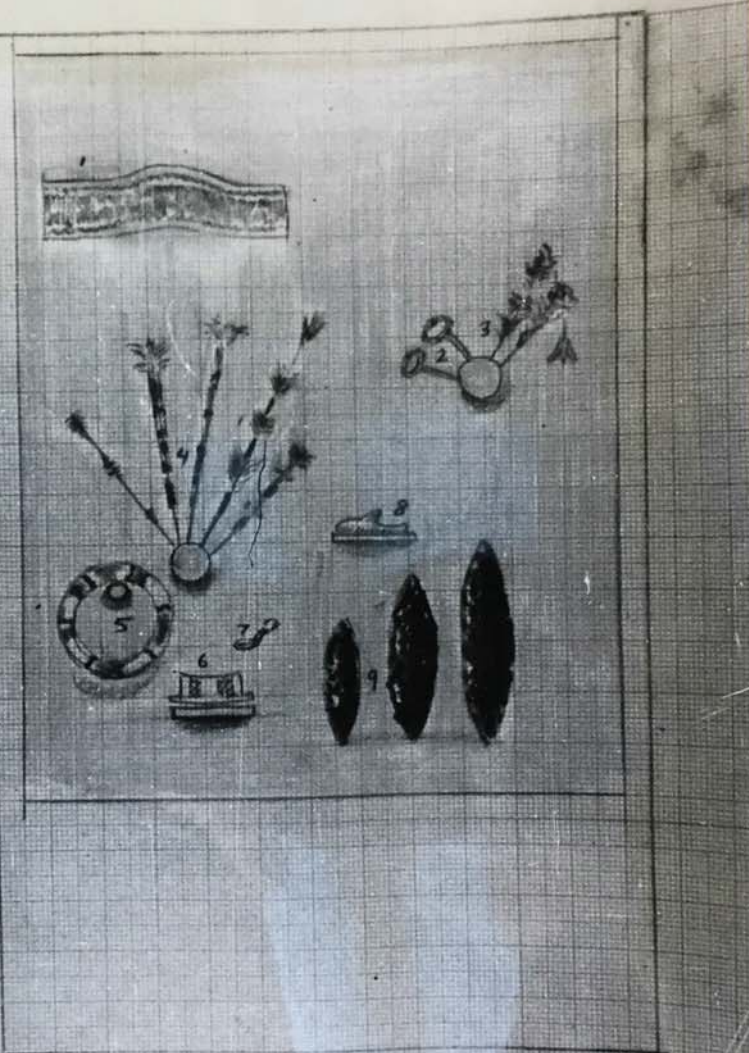
Series.Folder:

IX. B. 1

Collection C

A.)

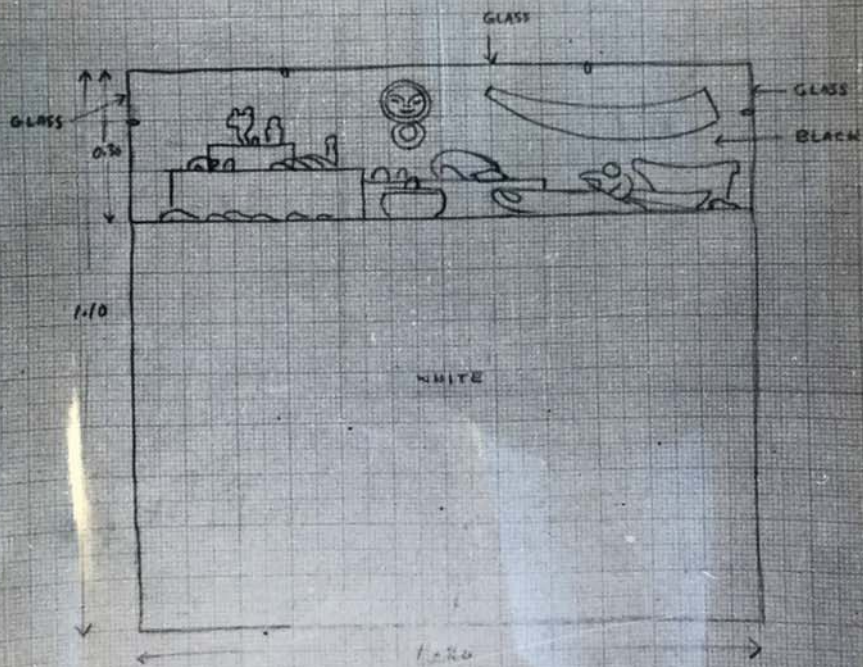
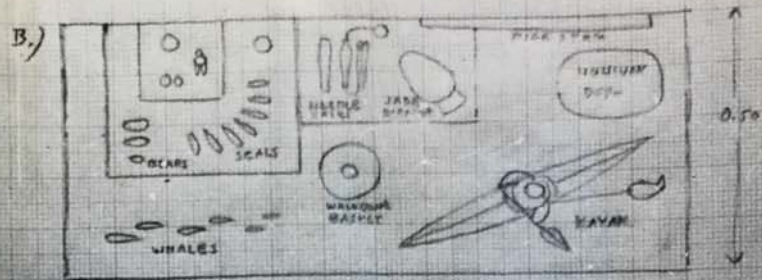
- 1 HOOPA
WOODPECKER
HEAD DRESS
- 2 HOOPA
EAR ORNAMENTS
BONE AND FEATHERS
- 3 YURUK HAIR
ORNAMENTS
- 4 POME
HAIR ORNAMENTS
- 5 HUPA
HEADRESS.
- 6 BONE BOX
- 7 BONE SPOON
- 8 OLD DIECUNO
WHALE
- 9 KAROK
OBSIDIAN
BLADES.



FOR STUDY PURPOSES ONLY. NOT FOR REPRODUCTION.

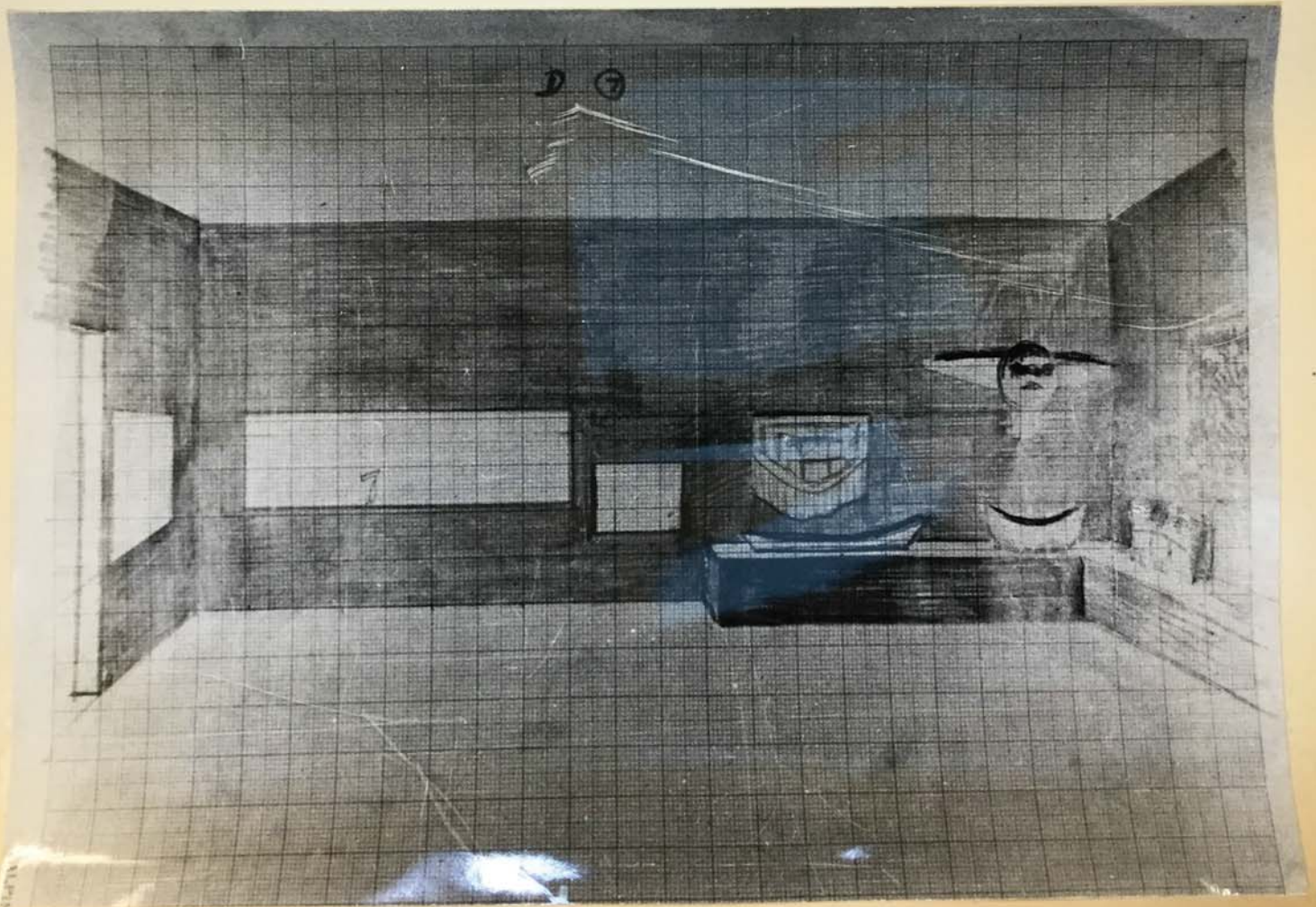
The Museum of Modern Art Archives, NY	Collection:	Series.Folder:
	RDH	IX. B. 1

GALLERY C



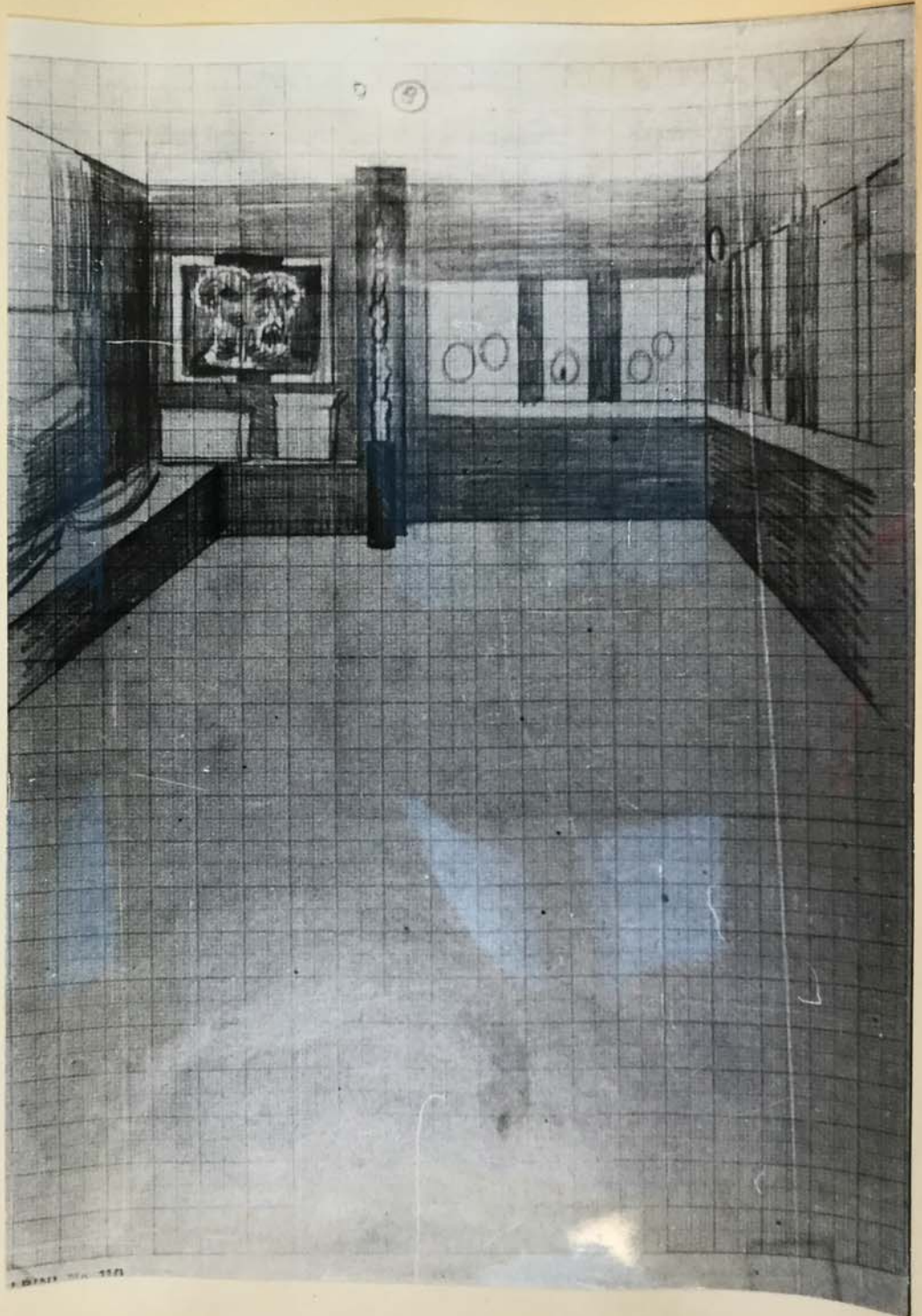
FOR STUDY PURPOSES ONLY. NOT FOR REPRODUCTION.

The Museum of Modern Art Archives, NY	Collection:	Series.Folder:
	RDH	IX.B.1



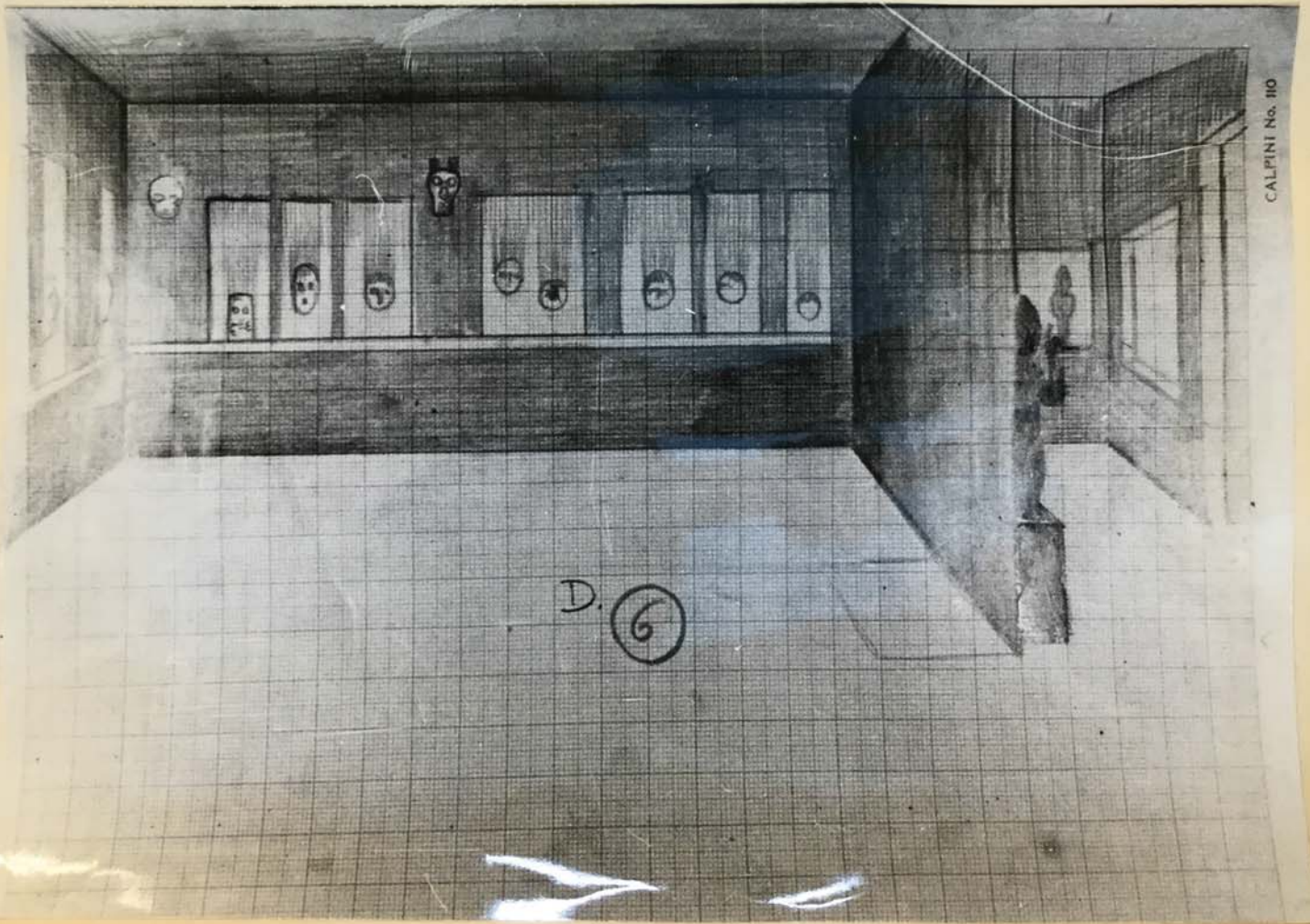
FOR STUDY PURPOSES ONLY. NOT FOR REPRODUCTION.

The Museum of Modern Art Archives, NY	Collection:	Series.Folder:
	RDH	IX.B.1



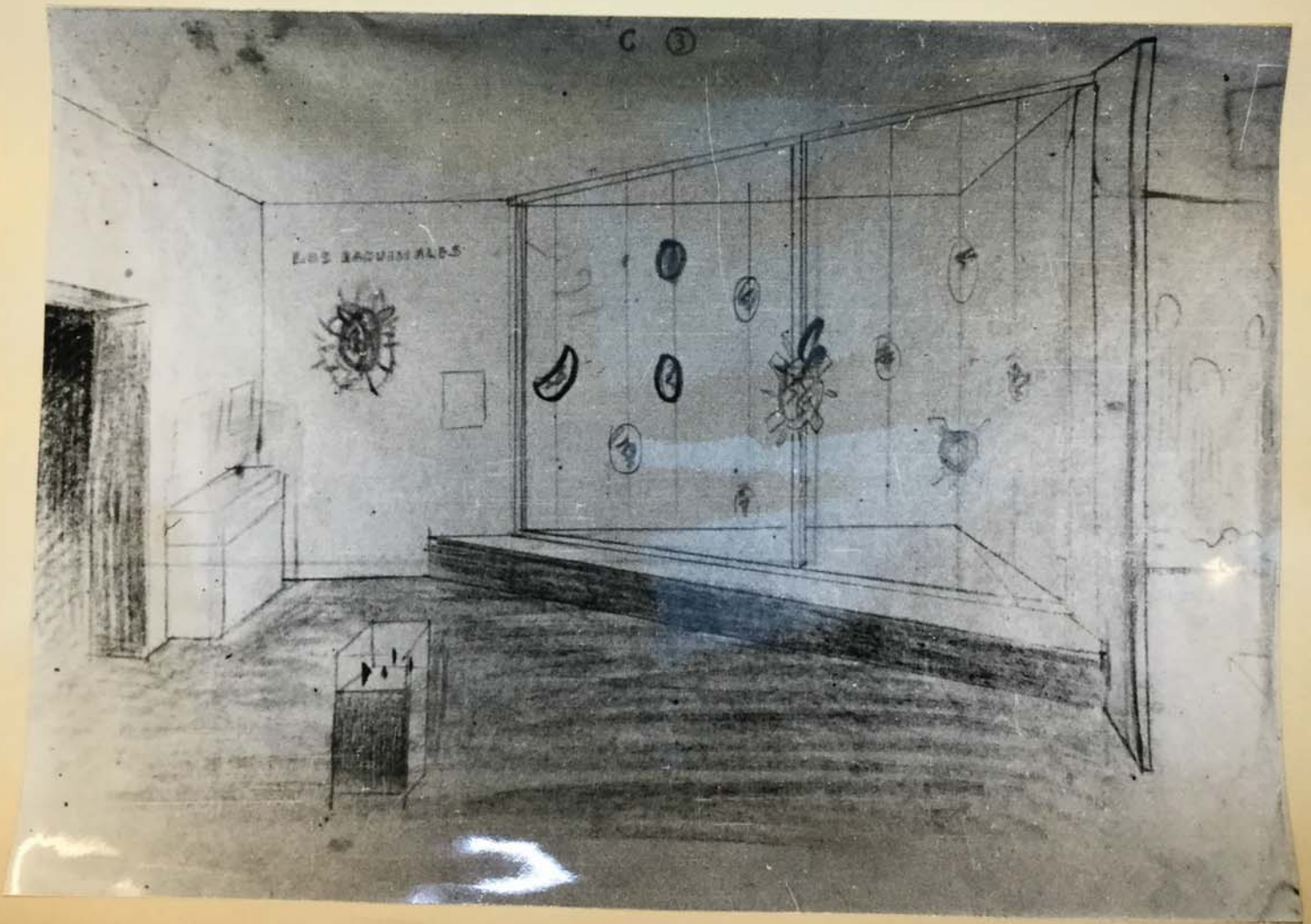
FOR STUDY PURPOSES ONLY. NOT FOR REPRODUCTION.

The Museum of Modern Art Archives, NY	Collection:	Series.Folder:
	RDH	IX. B. 1



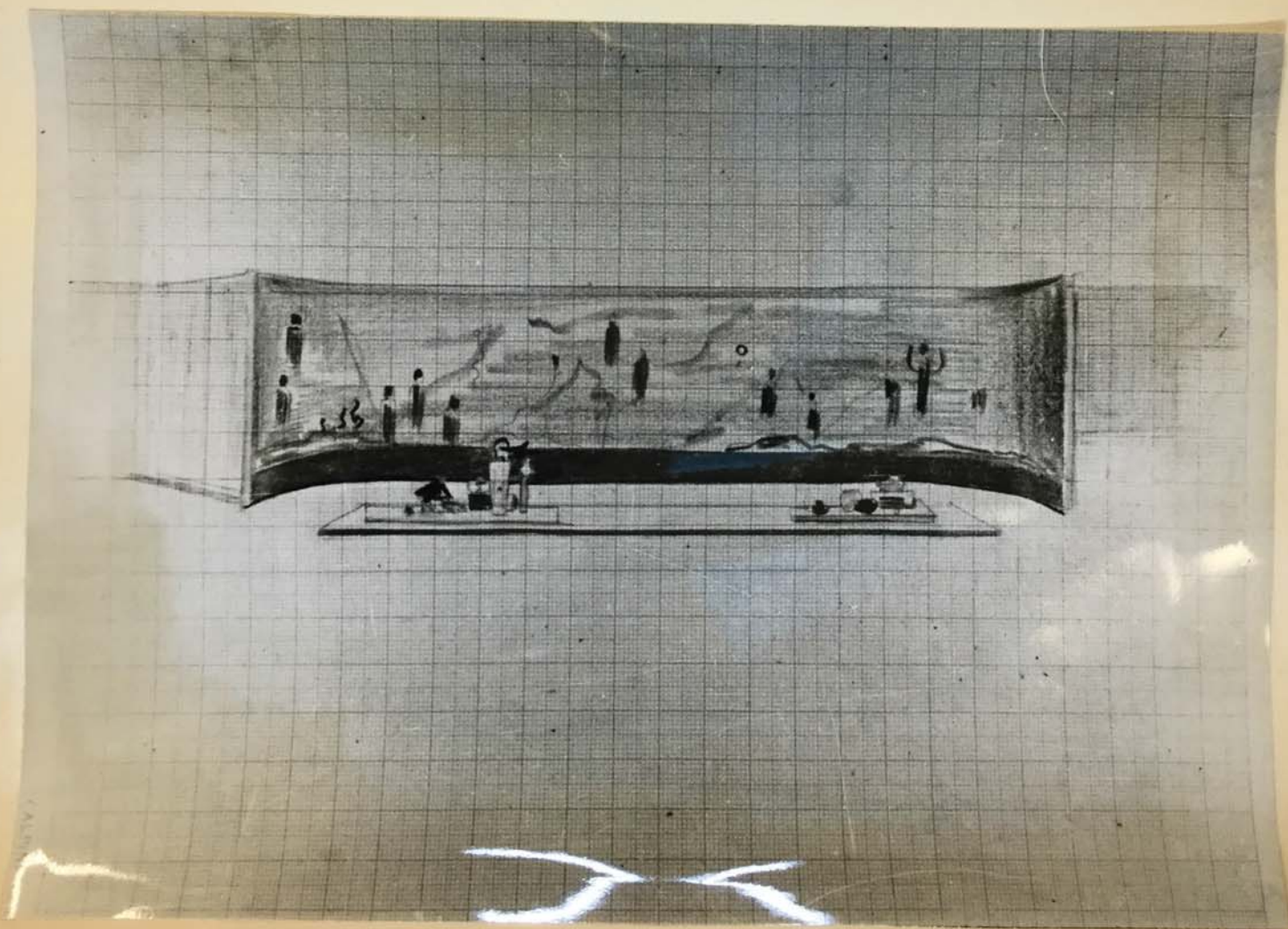
FOR STUDY PURPOSES ONLY. NOT FOR REPRODUCTION.

The Museum of Modern Art Archives, NY	Collection:	Series.Folder:
	RDH	IX. B. 1



FOR STUDY PURPOSES ONLY. NOT FOR REPRODUCTION.

The Museum of Modern Art Archives, NY	Collection:	Series.Folder:
	RDH	IX.B.1



FOR STUDY PURPOSES ONLY. NOT FOR REPRODUCTION.

The Museum of Modern Art Archives, NY	Collection:	Series.Folder:
	RDH	IX.B.1

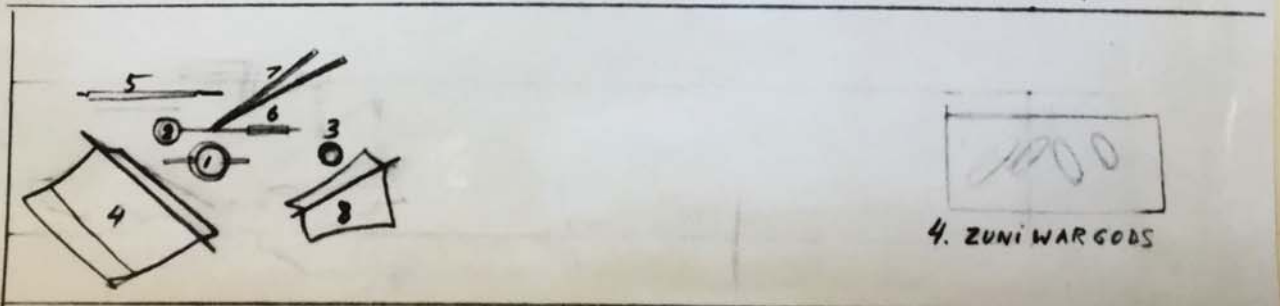
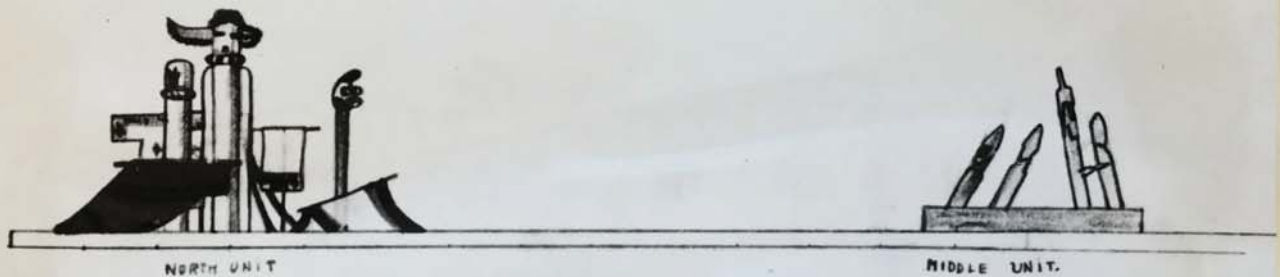
Galleria C.



FOR STUDY PURPOSES ONLY. NOT FOR REPRODUCTION.

The Museum of Modern Art Archives, NY	Collection:	Series.Folder:
	RDH	IX.B.1

North and Middle Unit on Concrete Platform. 02^(A)

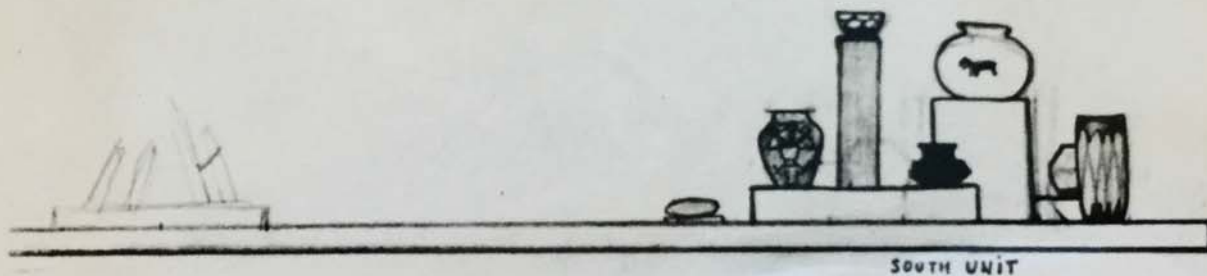


- 1 MASK ZUNI SAIYATASHA 4 DRESS ACOMA 7 SASH HOPI
2 MASK ZUNI ANAHOND 5 SHIRT JEMEZ 8 BLANKET HOPI
3 MASK HOPI (GOURD) 6 KILT HOPI

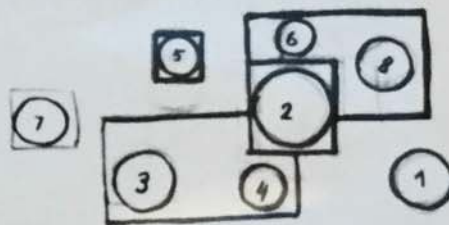
FOR STUDY PURPOSES ONLY. NOT FOR REPRODUCTION.

The Museum of Modern Art Archives, NY	Collection:	Series.Folder:
	RDH	IX. B. 1

South Unit on Concrete Platform. Cz[®]



SOUTH UNIT



- 1 DRUM WITH PAINTED DRUM HEAD 5 BOWL SANTE DEMINGO.
2 DRUM JAR ZUNI 6 ACCHA JAR (PARROT)
3 JAR WITH KACHINA HOPI 7 LOW JAR HOPI
4 WATER JAR STA CLARA 8 JAR ACCHA

1" = 1 meter