

CONDITIONS OF USE FOR THIS PDF

The images contained within this PDF may be used for private study, scholarship, and research only. They may not be published in print, posted on the internet, or exhibited. They may not be donated, sold, or otherwise transferred to another individual or repository without the written permission of The Museum of Modern Art Archives.

When publication is intended, publication-quality images must be obtained from SCALA Group, the Museum's agent for licensing and distribution of images to outside publishers and researchers.

If you wish to quote any of this material in a publication, an application for permission to publish must be submitted to the MoMA Archives. This stipulation also applies to dissertations and theses. All references to materials should cite the archival collection and folder, and acknowledge "The Museum of Modern Art Archives, New York."

Whether publishing an image or quoting text, you are responsible for obtaining any consents or permissions which may be necessary in connection with any use of the archival materials, including, without limitation, any necessary authorizations from the copyright holder thereof or from any individual depicted therein.

In requesting and accepting this reproduction, you are agreeing to indemnify and hold harmless The Museum of Modern Art, its agents and employees against all claims, demands, costs and expenses incurred by copyright infringement or any other legal or regulatory cause of action arising from the use of this material.

NOTICE: WARNING CONCERNING COPYRIGHT RESTRICTIONS

The copyright law of the United States (Title 17, United States Code) governs the making of photocopies or other reproductions of copyrighted material. Under certain conditions specified in the law, libraries and archives are authorized to furnish a photocopy or other reproduction. One of these specified conditions is that the photocopy or reproduction is not to be "used for any purpose other than private study, scholarship, or research." If a user makes a request for, or later uses, a photocopy or reproduction for purposes in excess of "fair use," that user may be liable for copyright infringement.

FOR STUDY PURPOSES ONLY. NOT FOR REPRODUCTION.

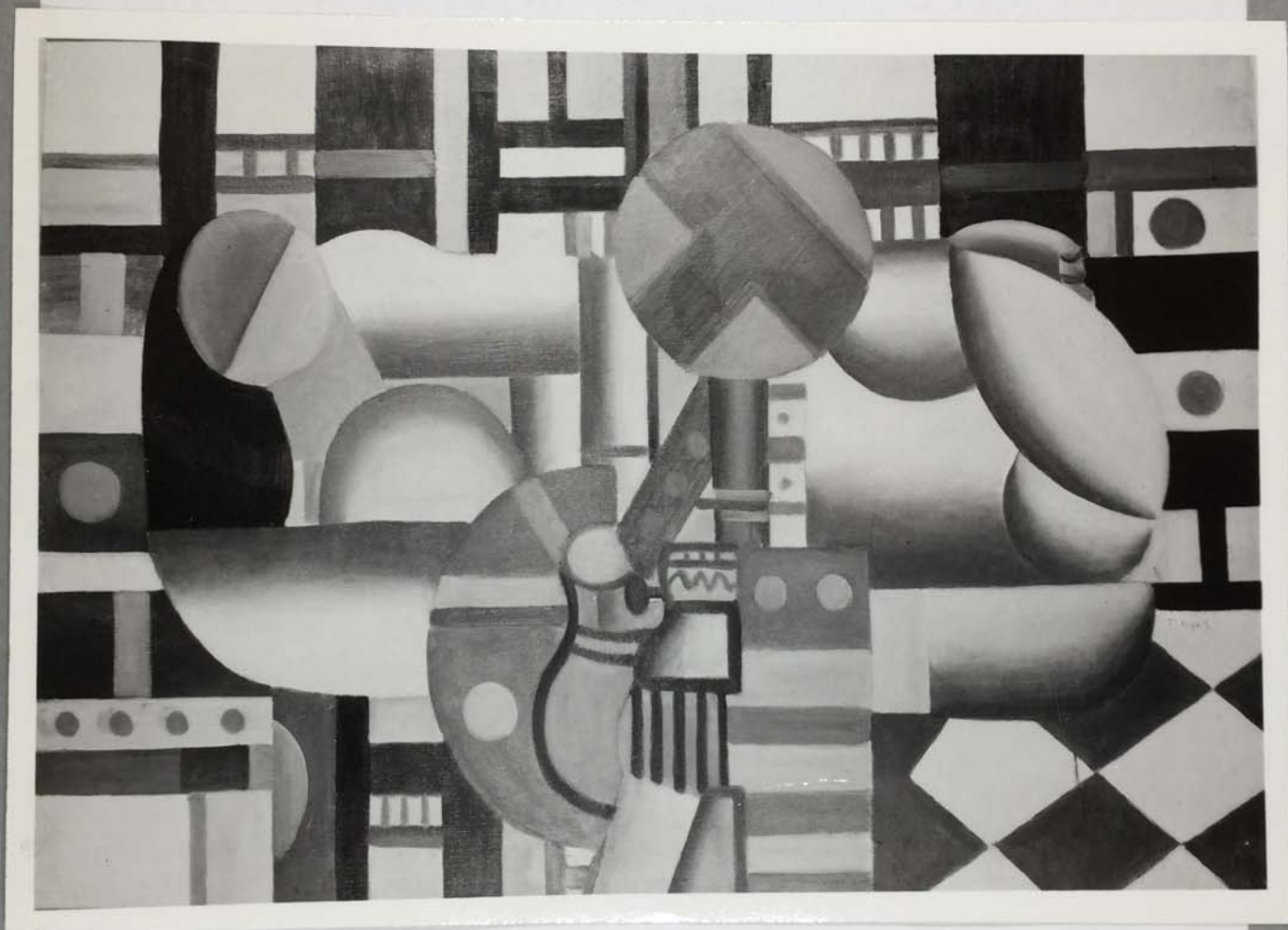
The Museum of Modern Art Archives, NY	Collection:	Series.Folder:
	Paul Rosenberg	III. B.1.216

SOLD

LEGER

FOR STUDY PURPOSES ONLY. NOT FOR REPRODUCTION.

The Museum of Modern Art Archives, NY	Collection:	Series.Folder:
	Paul Rosenberg	III. B.1.216



FOR STUDY PURPOSES ONLY. NOT FOR REPRODUCTION.

The Museum of Modern Art Archives, NY	Collection:	Series.Folder:
	Paul Rosenberg	III. B.1.216

PAUL ROSENBERG & CO.

20 EAST 79th STREET, NEW YORK 21, N. Y.

RHinelander 4-2340

LEGER

"Reclining Woman with Still Life"

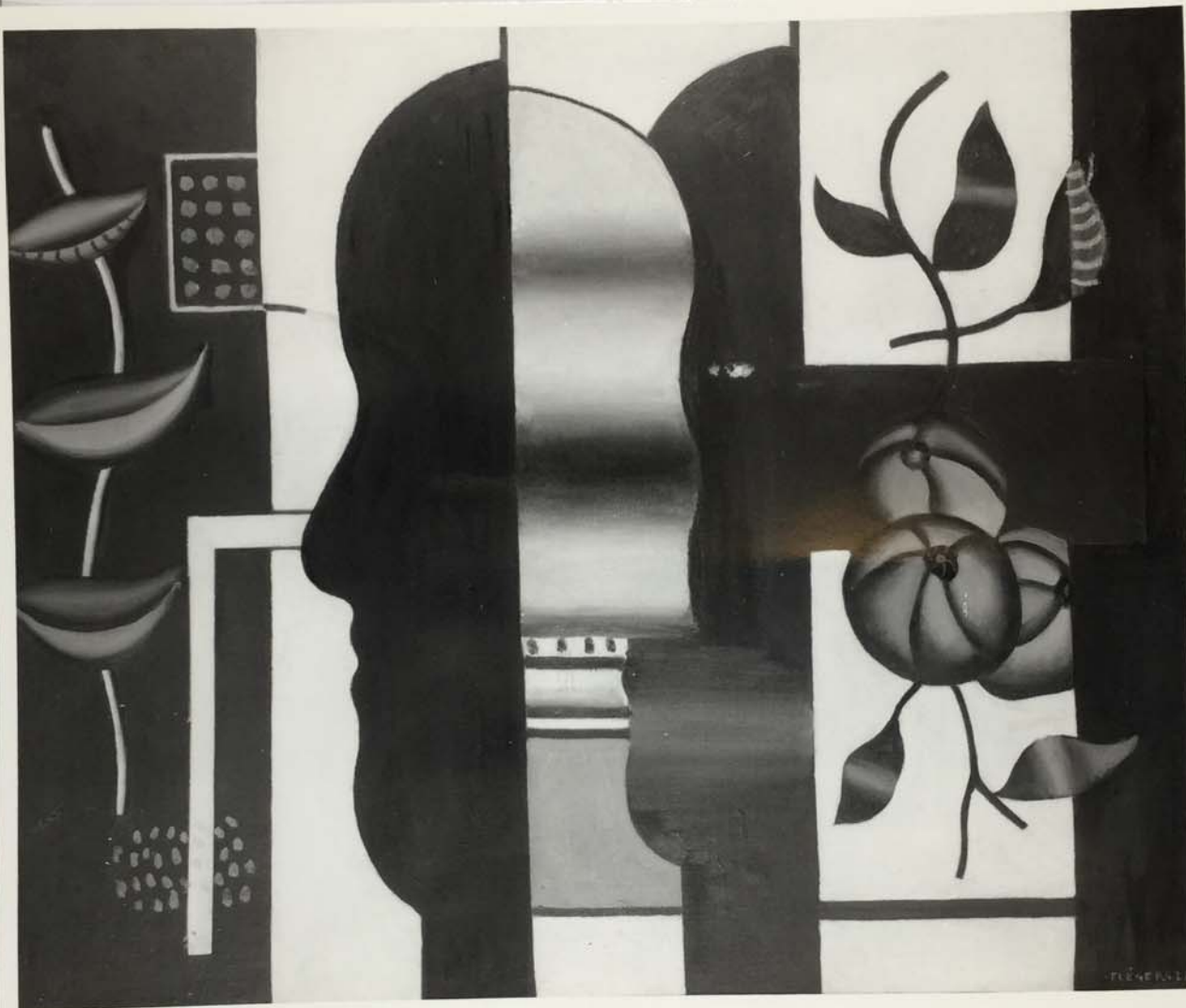
No. 1687-P

1921

26 x 36 inches

FOR STUDY PURPOSES ONLY. NOT FOR REPRODUCTION.

The Museum of Modern Art Archives, NY	Collection:	Series.Folder:
	Paul Rosenberg	III. B. 1. 216



FOR STUDY PURPOSES ONLY. NOT FOR REPRODUCTION.

The Museum of Modern Art Archives, NY	Collection:	Series.Folder:
	Paul Rosenberg	III. B.1.216

PAUL ROSENBERG & CO.

20 EAST 79th STREET, NEW YORK 21, N. Y.

RHinelander 4-2340

LEGER

2443 Still Life, Profile 1928

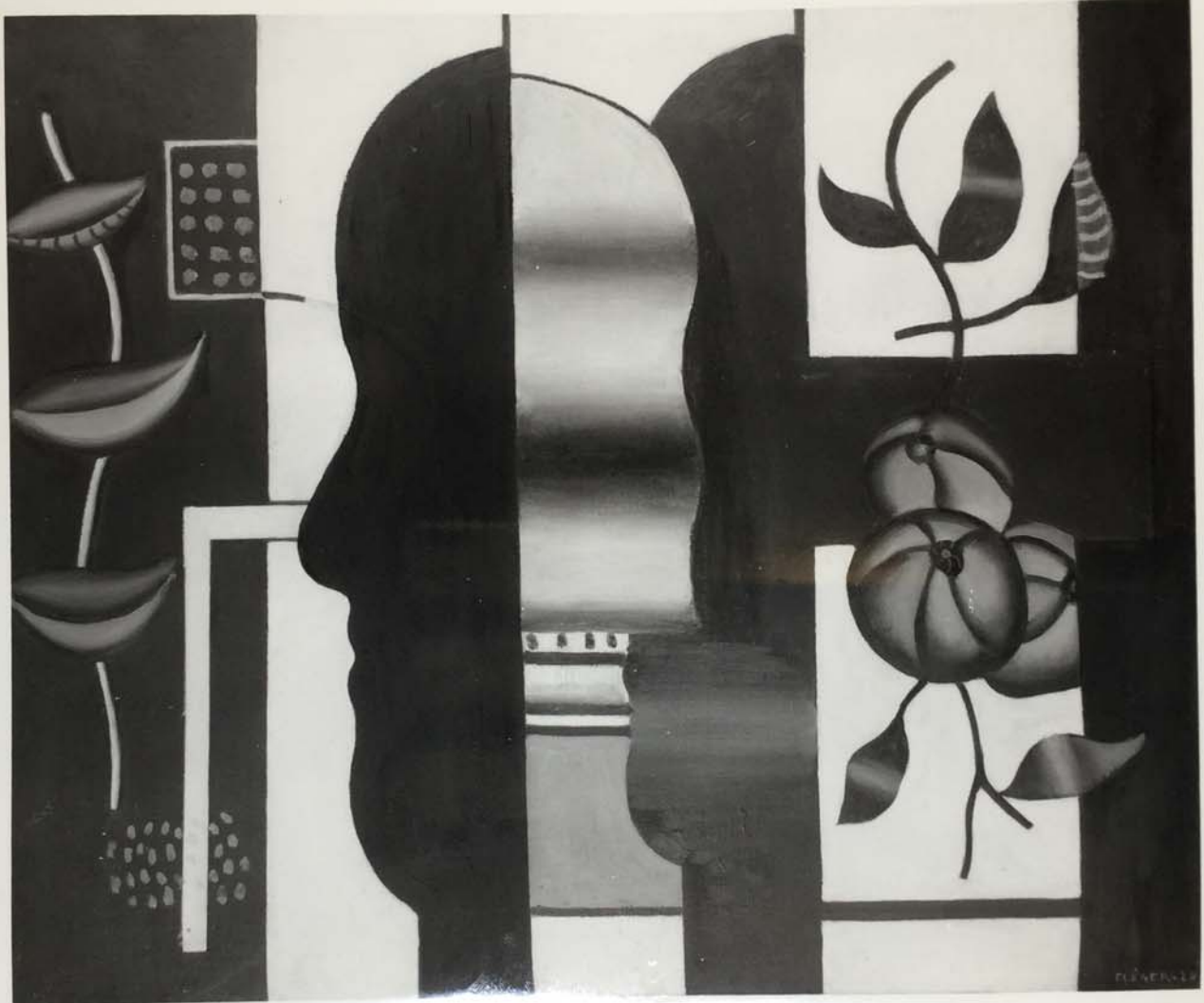
36 x 25 1/4"

Sied

New gallery

FOR STUDY PURPOSES ONLY. NOT FOR REPRODUCTION.

The Museum of Modern Art Archives, NY	Collection:	Series.Folder:
	Paul Rosenberg	III. B.1.216



FOR STUDY PURPOSES ONLY. NOT FOR REPRODUCTION.

The Museum of Modern Art Archives, NY	Collection:	Series.Folder:
	Paul Rosenberg	III. B.1.216

PAUL ROSENBERG & CO.

20 EAST 79th STREET, NEW YORK 21, N. Y.

RHinelander 4-2340

LEGER

2443 Still Life, Profile 1928

36 x 25 1/4"

Soed
New Gallery

FOR STUDY PURPOSES ONLY. NOT FOR REPRODUCTION.

The Museum of Modern Art Archives, NY	Collection:	Series.Folder:
	Paul Rosenberg	III. B.1. 216



FOR STUDY PURPOSES ONLY. NOT FOR REPRODUCTION.

The Museum of Modern Art Archives, NY	Collection:	Series.Folder:
	Paul Rosenberg	III. B.1.216

PAUL ROSENBERG & CO.
20 EAST 79th STREET, NEW YORK 21, N. Y.
RHineland 4-2340

LEGER

"Still Life with Shell"

No. 2464-P 1929

36 1/2 x 26 inches

Sold - Mr James Quinn

FOR STUDY PURPOSES ONLY. NOT FOR REPRODUCTION.

The Museum of Modern Art Archives, NY	Collection:	Series.Folder:
	Paul Rosenberg	III. B. 1. 216



FOR STUDY PURPOSES ONLY. NOT FOR REPRODUCTION.

The Museum of Modern Art Archives, NY	Collection:	Series.Folder:
	Paul Rosenberg	III. B.1.216

PAUL ROSENBERG & CO.
20 EAST 79th STREET, NEW YORK 21, N. Y.
RHineland 4-2340

LEGER

"Still Life with Shell"

No. 2464-P 1929

36 1/2 x 26 inches

Sold to Mrs. Jones Smith

FOR STUDY PURPOSES ONLY. NOT FOR REPRODUCTION.

The Museum of Modern Art Archives, NY	Collection:	Series.Folder:
	Paul Rosenberg	III. B.1.216



FOR STUDY PURPOSES ONLY. NOT FOR REPRODUCTION.

The Museum of Modern Art Archives, NY	Collection:	Series.Folder:
	Paul Rosenberg	III. B.1.216

PAUL ROSENBERG & CO.
20 EAST 79th STREET, NEW YORK 21, N. Y.
RHineland 4-2340

Sold: *Claude Bernard*

LEGER

"Composition with Leaf and Pipe"

No. 2815-P 1930

36 x 25 1/4 inches

FOR STUDY PURPOSES ONLY. NOT FOR REPRODUCTION.

The Museum of Modern Art Archives, NY	Collection:	Series.Folder:
	Paul Rosenberg	III. B.1.216



FOR STUDY PURPOSES ONLY. NOT FOR REPRODUCTION.

The Museum of Modern Art Archives, NY	Collection:	Series.Folder:
	Paul Rosenberg	III. B.1.216

PAUL ROSENBERG & CO.

20 EAST 79th STREET, NEW YORK 21, N. Y.

RHinelande 4-2340

LEGER

1682-P "Cup of Tea" 1921

36 1/2 x 25 1/2"

FOR STUDY PURPOSES ONLY. NOT FOR REPRODUCTION.

The Museum of Modern Art Archives, NY	Collection:	Series.Folder:
	Paul Rosenberg	III. B.1.216



FOR STUDY PURPOSES ONLY. NOT FOR REPRODUCTION.

The Museum of Modern Art Archives, NY	Collection:	Series.Folder:
	Paul Rosenberg	III. B.1.216

LEGER Fernand -

Composition (deux femmes)

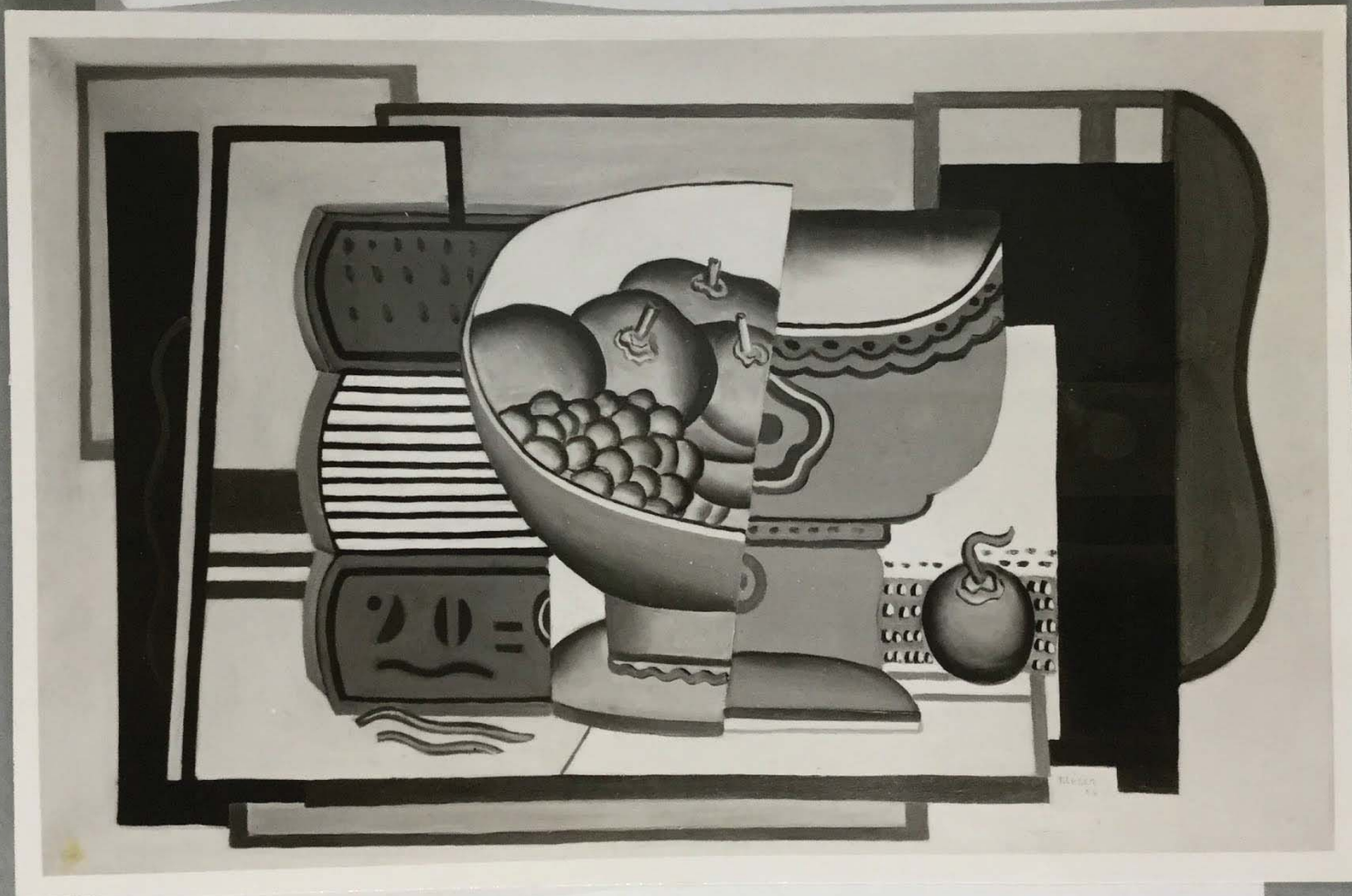
Toile

H. 0,54 x L. 0,61

Signée en bas à droite

FOR STUDY PURPOSES ONLY. NOT FOR REPRODUCTION.

The Museum of Modern Art Archives, NY	Collection:	Series.Folder:
	Paul Rosenberg	III. B.1.216



FOR STUDY PURPOSES ONLY. NOT FOR REPRODUCTION.

The Museum of Modern Art Archives, NY	Collection:	Series.Folder:
	Paul Rosenberg	III. B.1.216

PAUL ROSENBERG & CO.
16 EAST 57th STREET, NEW YORK CITY
PLaza 3-5653

LEGER

1684 Nature Morte 1925

24 x 37 inches

Soed
New gallery

FOR STUDY PURPOSES ONLY. NOT FOR REPRODUCTION.

The Museum of Modern Art Archives, NY	Collection:	Series.Folder:
	Paul Rosenberg	III. B.1.216



FOR STUDY PURPOSES ONLY. NOT FOR REPRODUCTION.

The Museum of Modern Art Archives, NY	Collection:	Series.Folder:
	Paul Rosenberg	III. B.1.216

PAUL ROSENBERG & CO. 16 EAST 57th STREET, NEW YORK CITY PLaza 3-5653		
LEGER		
2704-P	Two Dancers	1929
36 x 29 "		

Mullard Waldheim

FOR STUDY PURPOSES ONLY. NOT FOR REPRODUCTION.

The Museum of Modern Art Archives, NY	Collection:	Series.Folder:
	Paul Rosenberg	III. B.1.216



FOR STUDY PURPOSES ONLY. NOT FOR REPRODUCTION.

The Museum of Modern Art Archives, NY	Collection:	Series.Folder:
	Paul Rosenberg	III. B.1.216

PAUL ROSENBERG & CO.

20 EAST 79th STREET, NEW YORK 21, N. Y.

RHinelander 4-2340

FERNAND LEGER

2733-p "Composition with Keys" 1929

29 x 36 inches

Marcus

Saw

(Chicago)

FOR STUDY PURPOSES ONLY. NOT FOR REPRODUCTION.

The Museum of Modern Art Archives, NY	Collection:	Series.Folder:
	Paul Rosenberg	III. B.1.216



FOR STUDY PURPOSES ONLY. NOT FOR REPRODUCTION.

The Museum of Modern Art Archives, NY	Collection:	Series.Folder:
	Paul Rosenberg	III. B.1.216

PAUL ROSENBERG & CO.
20 EAST 79th STREET, NEW YORK 21, N. Y.
RHineland 4-2340

LEGER

"Composition in Red and Blue"

No. 2814-P 1930

36 1/2 x 29 inches

Sold - Dixie Yarn
4/601

FOR STUDY PURPOSES ONLY. NOT FOR REPRODUCTION.

The Museum of Modern Art Archives, NY

Collection:

Paul Rosenberg

Series.Folder:

III. B.1.216



FOR STUDY PURPOSES ONLY. NOT FOR REPRODUCTION.

The Museum of Modern Art Archives, NY	Collection:	Series.Folder:
	Paul Rosenberg	III. B.1.216

PAUL ROSENBERG & CO.
20 EAST 79th STREET, NEW YORK 21, N. Y.
RHineland 4-2340

LEGER

"Composition in Red and Blue"

No. 281⁴-P 1930

36 1/2 x 29 inches

Sold - Daniel Garenne

4/67

FOR STUDY PURPOSES ONLY. NOT FOR REPRODUCTION.

The Museum of Modern Art Archives, NY	Collection:	Series.Folder:
	Paul Rosenberg	III. B.1.216



FOR STUDY PURPOSES ONLY. NOT FOR REPRODUCTION.

The Museum of Modern Art Archives, NY	Collection:	Series.Folder:
	Paul Rosenberg	III. B.1. 216

PAUL ROSENBERG & CO.

20 EAST 79th STREET, NEW YORK 21, N. Y.

RHinelander 4-2340

leger

2846

Composition With Pipe

1930

25 1/2 x 20"

Sold to Jane Mitchell

FOR STUDY PURPOSES ONLY. NOT FOR REPRODUCTION.

The Museum of Modern Art Archives, NY	Collection:	Series.Folder:
	Paul Rosenberg	III. B.1.216



FOR STUDY PURPOSES ONLY. NOT FOR REPRODUCTION.

The Museum of Modern Art Archives, NY	Collection:	Series.Folder:
	Paul Rosenberg	III. B.1.216

PAUL ROSENBERG & CO.
20 EAST 79th STREET, NEW YORK 21, N. Y.
RHineland 4-2340

LEGER

"Mona Lisa with Keys"

No. 2863-P 1930

25 1/2 x 21 1/2 inches

Sold to David Vessie
1-21-67

FOR STUDY PURPOSES ONLY. NOT FOR REPRODUCTION.

The Museum of Modern Art Archives, NY	Collection:	Series.Folder:
	Paul Rosenberg	III. B.1.216



FOR STUDY PURPOSES ONLY. NOT FOR REPRODUCTION.

The Museum of Modern Art Archives, NY	Collection:	Series.Folder:
	Paul Rosenberg	III. B.1.216

PAUL ROSENBERG & CO.
20 EAST 79th STREET, NEW YORK 21, N. Y.
RHineland 4-2340

LEGER

"Mona Lisa with Keys"

No. 2863-P 1930

25 1/2 x 21 1/2 inches

Sold to Daniel Vassier

1-21-67

FOR STUDY PURPOSES ONLY. NOT FOR REPRODUCTION.

The Museum of Modern Art Archives, NY	Collection:	Series.Folder:
	Paul Rosenberg	III. B.1.216



FOR STUDY PURPOSES ONLY. NOT FOR REPRODUCTION.

The Museum of Modern Art Archives, NY	Collection:	Series.Folder:
	Paul Rosenberg	III. B.1.216

Art Inst. Chic

Photograph Section

Neg. No.

© 21792

FOR STUDY PURPOSES ONLY. NOT FOR REPRODUCTION.

The Museum of Modern Art Archives, NY

Collection:

Paul Rosenberg

Series.Folder:

III. B.1.216



FOR STUDY PURPOSES ONLY. NOT FOR REPRODUCTION.

The Museum of Modern Art Archives, NY	Collection:	Series.Folder:
	Paul Rosenberg	III. B.1.216

20 EAST 79th STREET, NEW YORK 21, N. Y.

RHinelander 4-2340

MARGUERITE & PAUL ROSENBERG
PRIVATE COLLECTION

LEGER

876 Woman with Cat 1921

5097 36 1/2 x 25 3/4

FOR STUDY PURPOSES ONLY. NOT FOR REPRODUCTION.

The Museum of Modern Art Archives, NY	Collection:	Series.Folder:
	Paul Rosenberg	III. B.1.216



FOR STUDY PURPOSES ONLY. NOT FOR REPRODUCTION.

The Museum of Modern Art Archives, NY	Collection:	Series.Folder:
	Paul Rosenberg	III. B.1.216

PAUL ROSENBERG & CO.

20 EAST 79th STREET, NEW YORK 21, N. Y.

RHinelander 4-2340

LEGER

5097

"Woman with Cat"

1921

36 1/2 x 25 3/4"

FOR STUDY PURPOSES ONLY. NOT FOR REPRODUCTION.

The Museum of Modern Art Archives, NY	Collection:	Series.Folder:
	Paul Rosenberg	III. B.1.216



FOR STUDY PURPOSES ONLY. NOT FOR REPRODUCTION.

The Museum of Modern Art Archives, NY	Collection:	Series.Folder:
	Paul Rosenberg	III. B.1.216

20 EAST 79th STREET, NEW YORK 21, N. Y.
RHineland 4-2340

MARGUERITE & PAUL ROSENBERG
PRIVATE COLLECTION

LEGER

876 Woman with Cat 1921

5097 36 1/2 x 25 3/4

FOR STUDY PURPOSES ONLY. NOT FOR REPRODUCTION.

The Museum of Modern Art Archives, NY	Collection:	Series.Folder:
	Paul Rosenberg	III. B.1.216



FOR STUDY PURPOSES ONLY. NOT FOR REPRODUCTION.

The Museum of Modern Art Archives, NY	Collection:	Series.Folder:
	Paul Rosenberg	III. B.1.216

PAUL ROSENBERG & CO.

20 EAST 79th STREET, NEW YORK 21, N. Y.

RHinelander 4-2340

LEGER

5097 "Woman with Cat" 1921

36 1/2 x 25 3/4"

FOR STUDY PURPOSES ONLY. NOT FOR REPRODUCTION.

The Museum of Modern Art Archives, NY	Collection:	Series.Folder:
	Paul Rosenberg	III. B.1.216



FOR STUDY PURPOSES ONLY. NOT FOR REPRODUCTION.

The Museum of Modern Art Archives, NY	Collection:	Series.Folder:
	Paul Rosenberg	III. B.1.216

PAUL ROSENBERG & CO.

20 EAST 79th STREET, NEW YORK 21, N. Y.

RHinelander 4-2340

LEGER

876 "Woman with Cat" 1921

5097 36 1/2 x 25 3/4

FOR STUDY PURPOSES ONLY. NOT FOR REPRODUCTION.

The Museum of Modern Art Archives, NY	Collection:	Series.Folder:
	Paul Rosenberg	III. B.1.216



FOR STUDY PURPOSES ONLY. NOT FOR REPRODUCTION.

The Museum of Modern Art Archives, NY	Collection:	Series.Folder:
	Paul Rosenberg	III. B.1.216

PAUL ROSENBERG & CO.
20 EAST 79th STREET, NEW YORK 21, N. Y.
RHineland 4-2340

LEGER

876 "Woman with Cat" 1921
5097 36 1/2 x 25 3/4

FOR STUDY PURPOSES ONLY. NOT FOR REPRODUCTION.

The Museum of Modern Art Archives, NY	Collection:	Series.Folder:
	Paul Rosenberg	III. B.1.216



FLEGER.30

FOR STUDY PURPOSES ONLY. NOT FOR REPRODUCTION.

The Museum of Modern Art Archives, NY	Collection:	Series.Folder:
	Paul Rosenberg	III. B.1.216

PAUL ROSENBERG & CO.
20 EAST 79th STREET, NEW YORK 21, N. Y.
RHineland 4-2340

LEGER

5099

"Danseuse Rouge"

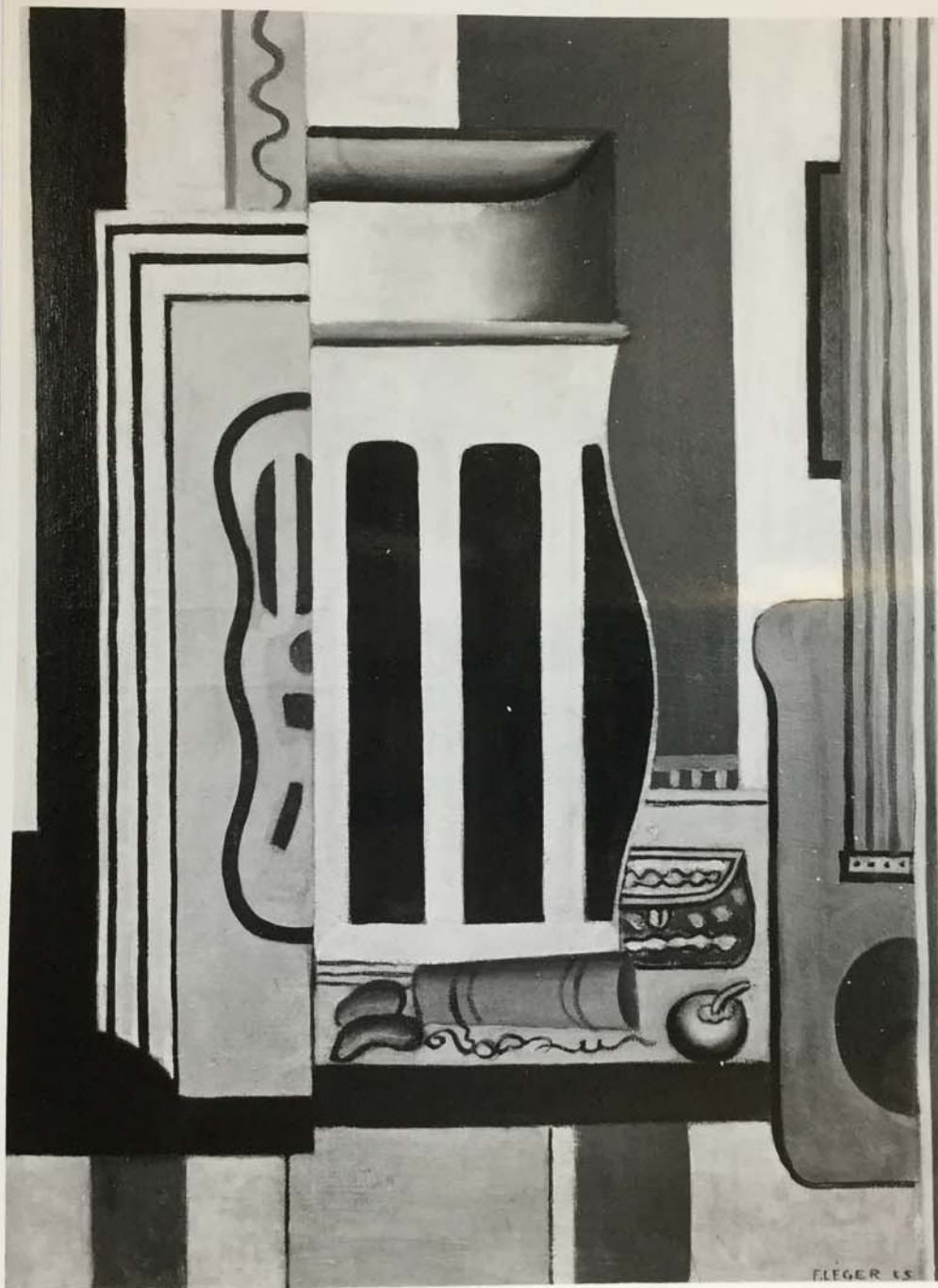
36 x 29

1930

Sold to Jack Schaeffer

FOR STUDY PURPOSES ONLY. NOT FOR REPRODUCTION.

The Museum of Modern Art Archives, NY	Collection:	Series.Folder:
	Paul Rosenberg	III. B.1.216



FOR STUDY PURPOSES ONLY. NOT FOR REPRODUCTION.

The Museum of Modern Art Archives, NY	Collection:	Series.Folder:
	Paul Rosenberg	III. B. 1. 216

PAUL ROSENBERG & CO.

16 EAST 57th STREET, NEW YORK CITY

PLaza 3-5653

LEGER

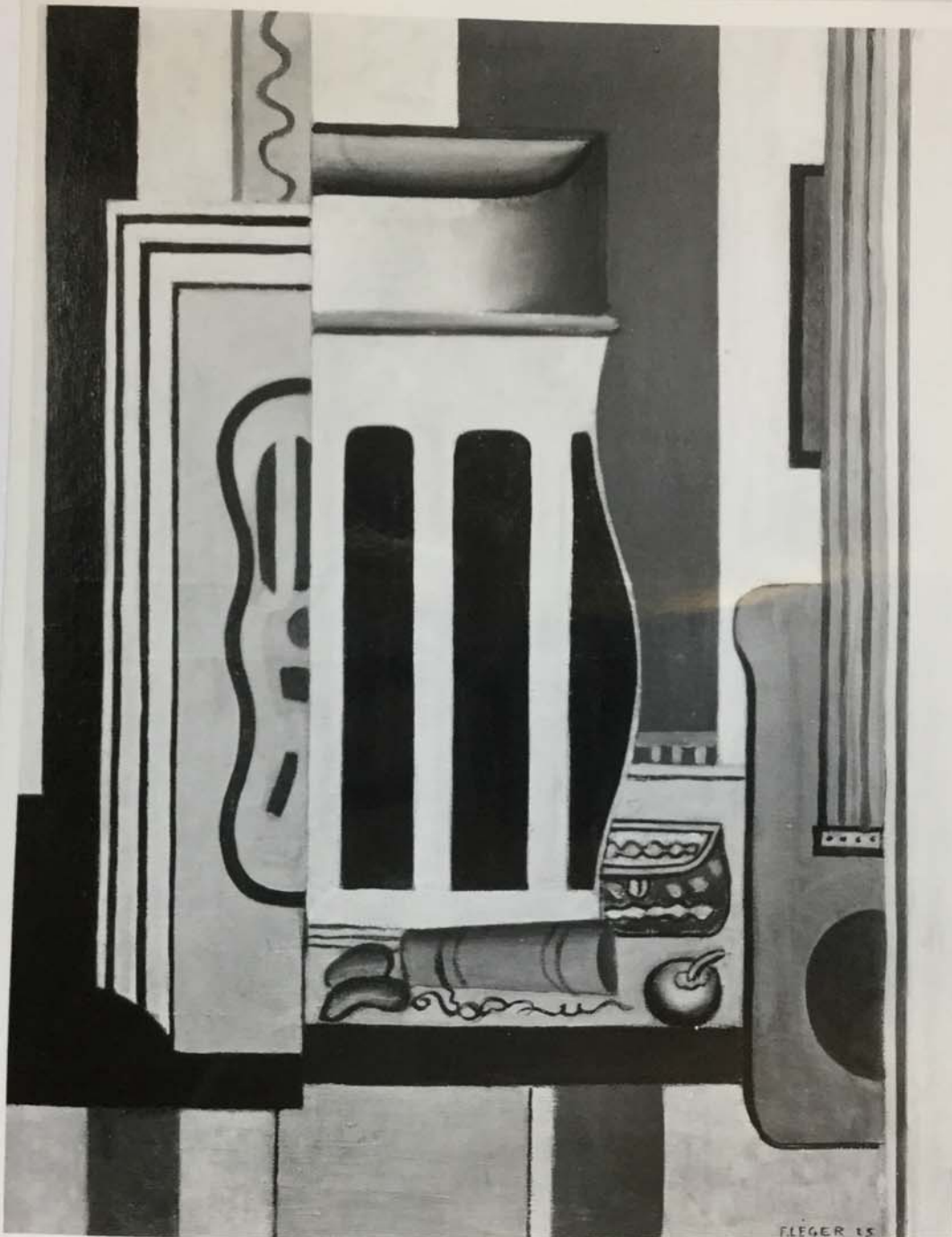
6385 The Thermometer 1925

25 3/4 x 18 1/4 "

William Jaffe

FOR STUDY PURPOSES ONLY. NOT FOR REPRODUCTION.

The Museum of Modern Art Archives, NY	Collection:	Series.Folder:
	Paul Rosenberg	III. B.1.216



FLEGER 15

FOR STUDY PURPOSES ONLY. NOT FOR REPRODUCTION.

The Museum of Modern Art Archives, NY	Collection:	Series.Folder:
	Paul Rosenberg	III. B.1.216

PAUL ROSENBERG & CO.
16 EAST 57th STREET, NEW YORK CITY
PLaza 3-5653

LEGER

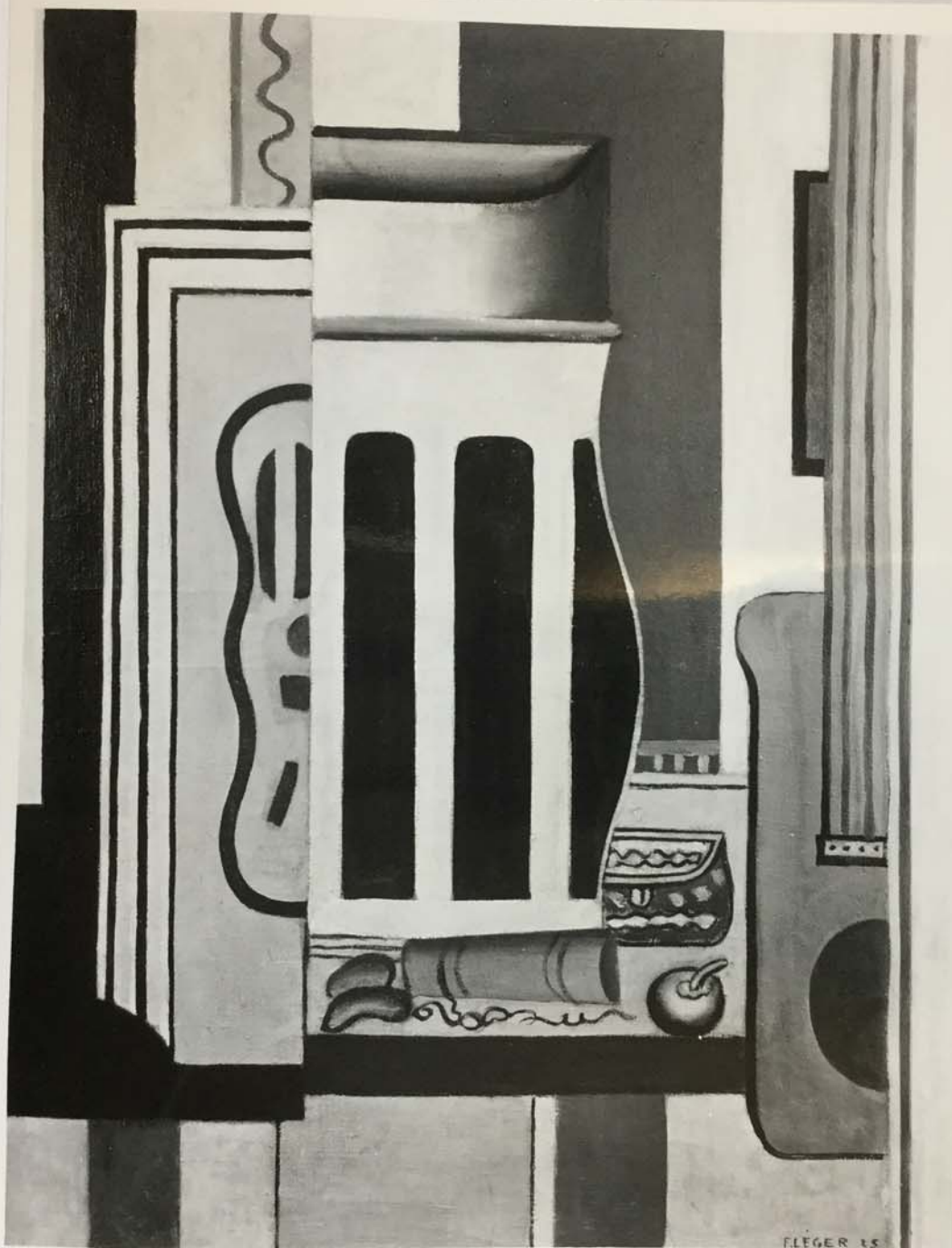
6585 The Thermometer 1925

25 3/4 x 18 1/4 "

William Jaffe

FOR STUDY PURPOSES ONLY. NOT FOR REPRODUCTION.

The Museum of Modern Art Archives, NY	Collection:	Series.Folder:
	Paul Rosenberg	III. B.1.216



FOR STUDY PURPOSES ONLY. NOT FOR REPRODUCTION.

The Museum of Modern Art Archives, NY	Collection:	Series.Folder:
	Paul Rosenberg	III. B.1.216

PAUL ROSENBERG & CO.
16 EAST 57th STREET, NEW YORK CITY
PLaza 3-5653

LEGER

6585 The Thermometer 1925

25 3/4 x 18 1/4 "

William Joffe

FOR STUDY PURPOSES ONLY. NOT FOR REPRODUCTION.

The Museum of Modern Art Archives, NY	Collection:	Series.Folder:
	Paul Rosenberg	III. B.1.216



FOR STUDY PURPOSES ONLY. NOT FOR REPRODUCTION.

The Museum of Modern Art Archives, NY	Collection:	Series.Folder:
	Paul Rosenberg	III. B.1.216

PAUL ROSENBERG & CO.
20 EAST 79TH STREET NEW YORK, N. Y. 10021

LEGER

No. 6434-
2724

"COMPOSITION"

10" x 14" (25 x 36 cm.)

1943

Sold

50054

O. E. NELSON Photographer
20 WEST 77th ST. N. Y. 10024
Telephone TR 4-1266

FOR STUDY PURPOSES ONLY. NOT FOR REPRODUCTION.

The Museum of Modern Art Archives, NY	Collection:	Series.Folder:
	Paul Rosenberg	III. B.1.216



FOR STUDY PURPOSES ONLY. NOT FOR REPRODUCTION.

The Museum of Modern Art Archives, NY	Collection:	Series.Folder:
	Paul Rosenberg	III. B.1.216

COLLECTION Mr. Alexandre Rosenberg
No. 2441+P
LEGER <i>PR. 86</i>
"Still-Life"
36 1/2 x 25 3/4"
1929

Sold
April 3, 1975

FOR STUDY PURPOSES ONLY. NOT FOR REPRODUCTION.

The Museum of Modern Art Archives, NY	Collection:	Series.Folder:
	Paul Rosenberg	III. B.1.216



FOR STUDY PURPOSES ONLY. NOT FOR REPRODUCTION.

The Museum of Modern Art Archives, NY	Collection:	Series.Folder:
	Paul Rosenberg	III. B.1.216

~~COLLECTION MR. Alexandre Rosenberg~~
No. 2441-P
L E G E R
"Still-Life" P.H. & Co
36 1/2 x 25 3/4"
1929

Sold
April 3, 1975

FOR STUDY PURPOSES ONLY. NOT FOR REPRODUCTION.

The Museum of Modern Art Archives, NY	Collection:	Series.Folder:
	Paul Rosenberg	III. B.1.216



FOR STUDY PURPOSES ONLY. NOT FOR REPRODUCTION.

The Museum of Modern Art Archives, NY	Collection:	Series.Folder:
	Paul Rosenberg	III. B.1.216

COLLECTION Mr. ~~Alexandre Rosenberg~~

No. 2441-P

LEGER

"Still-Life"

P.N. 86

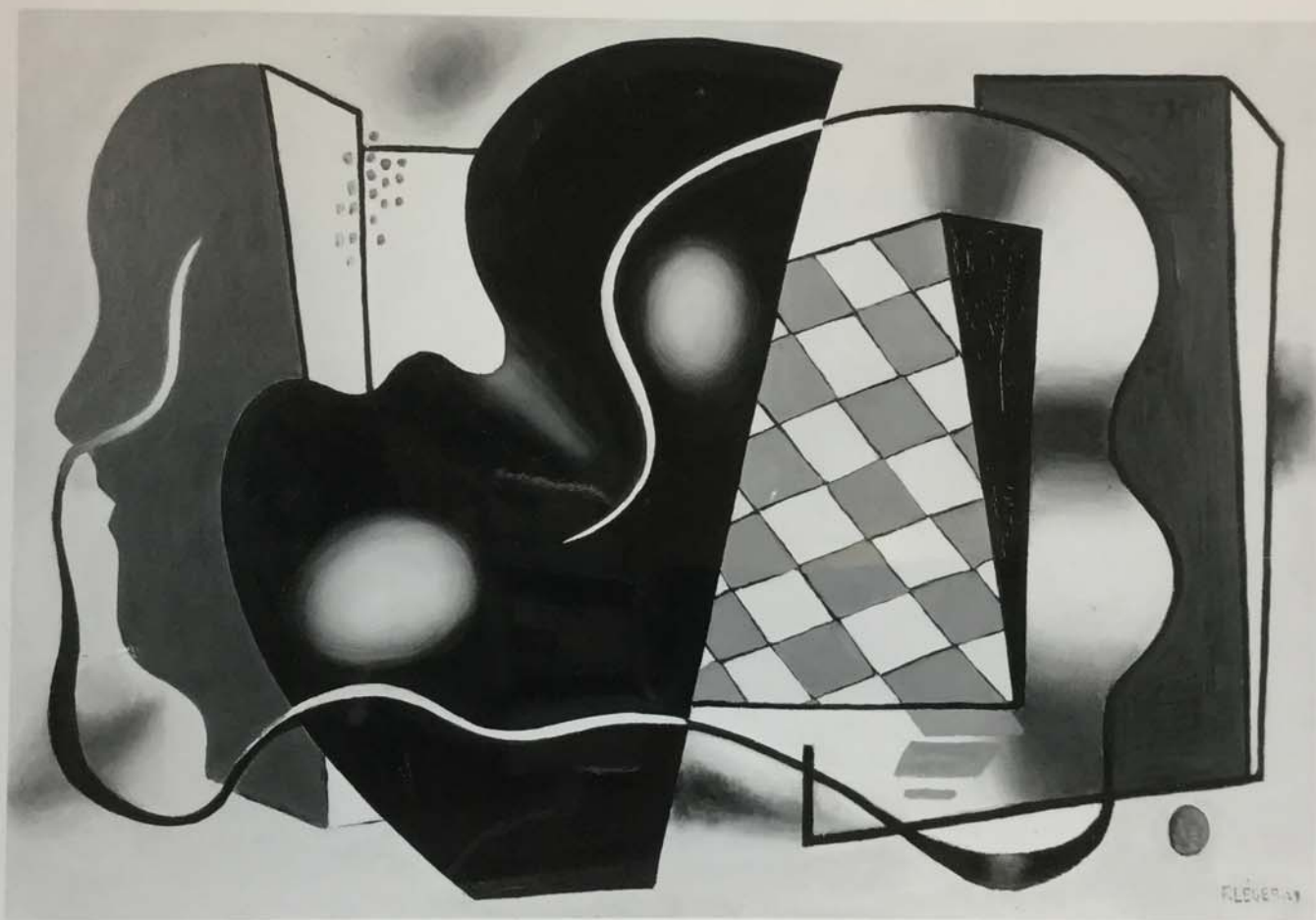
36 1/2 x 25 3/4"

1929

Sold April 3, 1975

FOR STUDY PURPOSES ONLY. NOT FOR REPRODUCTION.

The Museum of Modern Art Archives, NY	Collection:	Series.Folder:
	Paul Rosenberg	III. B.1.216



FOR STUDY PURPOSES ONLY. NOT FOR REPRODUCTION.

The Museum of Modern Art Archives, NY	Collection:	Series.Folder:
	Paul Rosenberg	III. B.1.216

20 EAST 79TH STREET NEW YORK, N. Y. 10021

COLLECTION A. Rosenberg

LEGER

"Composition with Checkerboard,

35 x 51"

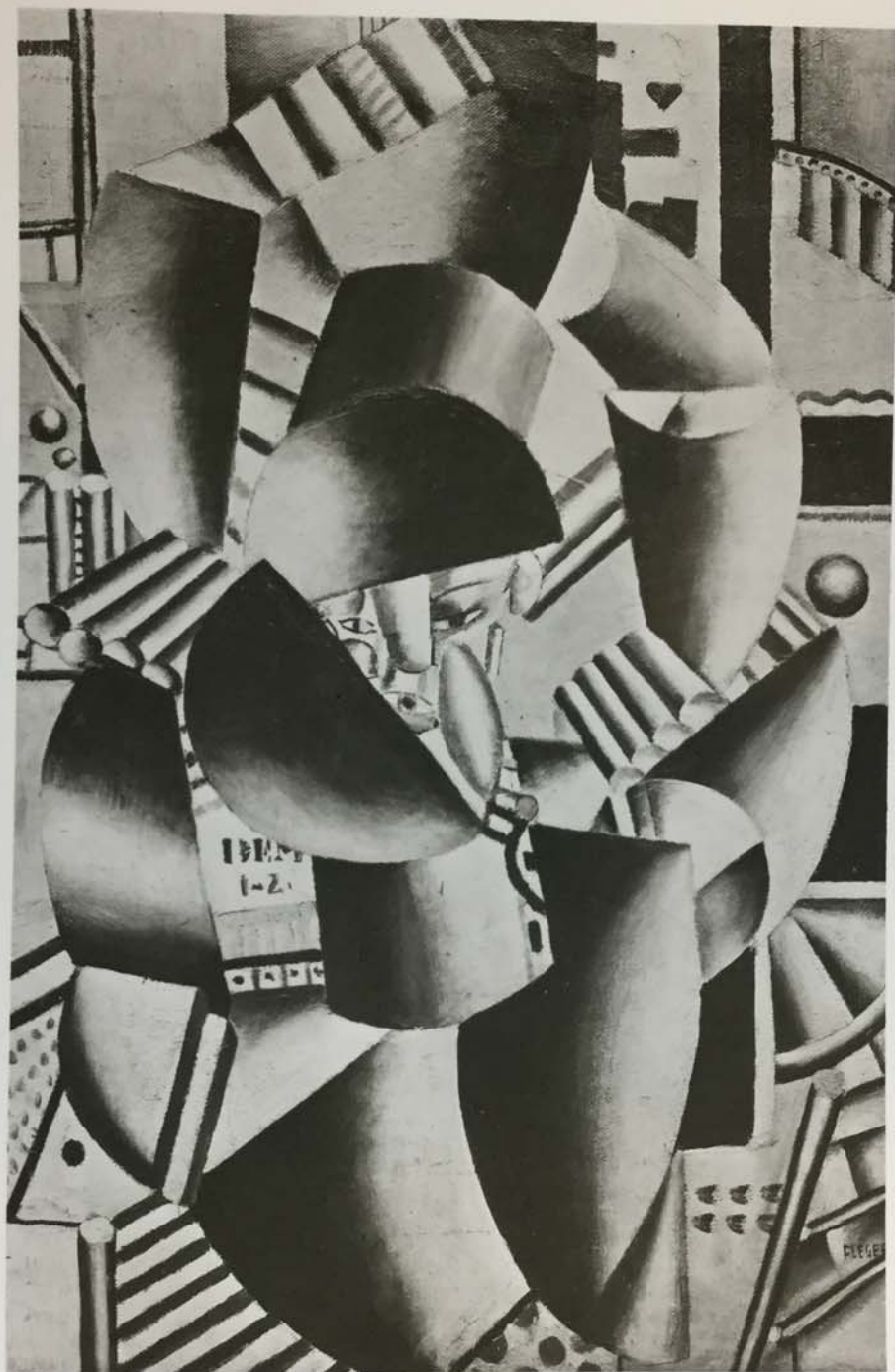
1929

Sold
Contemporary
Art Establishment

TAYLOR & DULL, INC.
45 E. 80th ST.
NEW YORK CITY 10021

FOR STUDY PURPOSES ONLY. NOT FOR REPRODUCTION.

The Museum of Modern Art Archives, NY	Collection:	Series.Folder:
	Paul Rosenberg	III. B.1.216



FOR STUDY PURPOSES ONLY. NOT FOR REPRODUCTION.

The Museum of Modern Art Archives, NY	Collection:	Series.Folder:
	Paul Rosenberg	III. B.1.216

PAUL ROSENBERG & CO.
20 EAST 79th STREET, NEW YORK 21, N. Y.
RHineland 4-2340

LEGER

1683-P "Les Acrobates" 1912

35 1/2 x 23 1/2"



120

LES ACROBATES, 1918
90 x 59 cm.

Solo
New Gallery

48

32 1/4

74

FOR STUDY PURPOSES ONLY. NOT FOR REPRODUCTION.

The Museum of Modern Art Archives, NY	Collection:	Series.Folder:
	Paul Rosenberg	III. B.1.216



FOR STUDY PURPOSES ONLY. NOT FOR REPRODUCTION.

The Museum of Modern Art Archives, NY	Collection:	Series.Folder:
	Paul Rosenberg	III. B.1.216

PAUL ROSENBERG & CO.
20 EAST 79th STREET, NEW YORK 21, N. Y.
RHineland 4-2340

LEGER

876 "Woman with Cat" 1921

5097 36 1/2 x 25 3/4

*W. H. Leger
1921*

LA FEMME AU CHAT, 1921
92 x 65 cm.

(121)

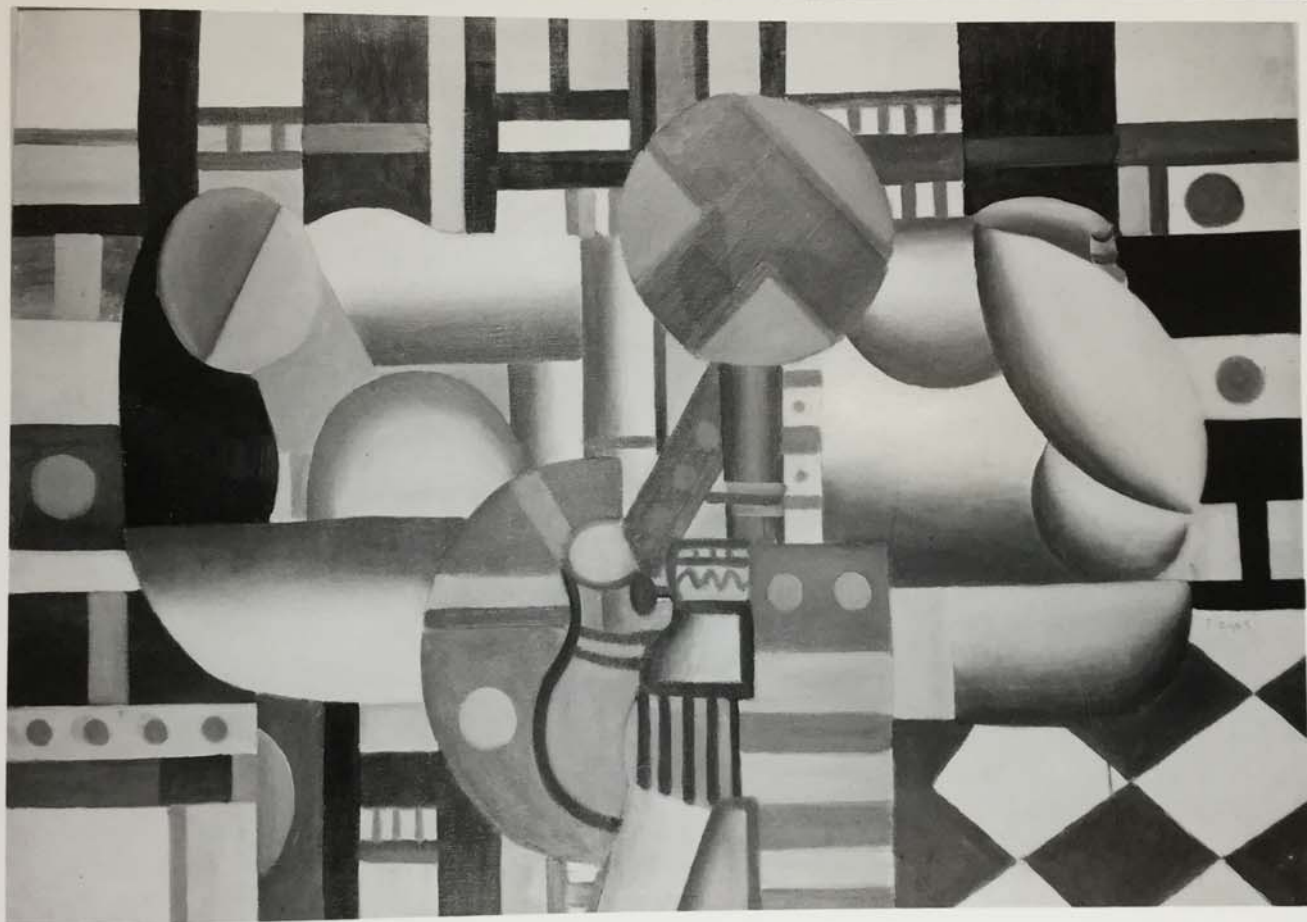
- 75 -

347

- 53

FOR STUDY PURPOSES ONLY. NOT FOR REPRODUCTION.

The Museum of Modern Art Archives, NY	Collection:	Series.Folder:
	Paul Rosenberg	III. B.1.216



FOR STUDY PURPOSES ONLY. NOT FOR REPRODUCTION.

The Museum of Modern Art Archives, NY	Collection:	Series.Folder:
	Paul Rosenberg	III. B.1.216

PAUL ROSENBERG & CO.
20 EAST 79th STREET, NEW YORK 21, N. Y.
RHineland 4-2340

LEGER

"Reclining Woman with Still Life"

No. 1687-P 1921

26 x 36 inches

FEMME ALLONGEE ET NATURE MORTE, 1921
65 x 92 cm.

122

File Lee

53

35/14

- 77 -

FOR STUDY PURPOSES ONLY. NOT FOR REPRODUCTION.

The Museum of Modern Art Archives, NY	Collection:	Series.Folder:
	Paul Rosenberg	III. B.1.216



FOR STUDY PURPOSES ONLY. NOT FOR REPRODUCTION.

The Museum of Modern Art Archives, NY	Collection:	Series.Folder:
	Paul Rosenberg	III. B.1.216

LE GRAND DEJEUNER, 1921
184 x 252 cm.

124

The Museum of Modern Art, New York, N.Y.

- 92 -

- 126 -

59/85

FOR STUDY PURPOSES ONLY. NOT FOR REPRODUCTION.

The Museum of Modern Art Archives, NY	Collection:	Series.Folder:
	Paul Rosenberg	III. B.1.216



FOR STUDY PURPOSES ONLY. NOT FOR REPRODUCTION.

The Museum of Modern Art Archives, NY	Collection:	Series.Folder:
	Paul Rosenberg	III. B.1.216

Sold - E. Bragaline

8750

92+65

Leger

2750-P - Femme levantant fleur

1930 - 36 1/2 + 25 1/2

FOR STUDY PURPOSES ONLY. NOT FOR REPRODUCTION.

The Museum of Modern Art Archives, NY	Collection:	Series.Folder:
	Paul Rosenberg	III. B.1.216



FOR STUDY PURPOSES ONLY. NOT FOR REPRODUCTION.

The Museum of Modern Art Archives, NY	Collection:	Series Folder:
	Paul Rosenberg	III. B.1.216

PAUL ROSENBERG & CO.

20 EAST 79th STREET, NEW YORK 21, N. Y.

RHinelander 4-2340

LEHER

2814 P "Compsotion" (copy) 1930

36 1/2 x 29"

Sack - Daniel Gorenne
4/67

MADE IN FRANCE

FOR STUDY PURPOSES ONLY. NOT FOR REPRODUCTION.

The Museum of Modern Art Archives, NY	Collection:	Series.Folder:
	Paul Rosenberg	III. B.1.216

Removed: 1 large and 7 small color transparencies (L&P)