

CONDITIONS OF USE FOR THIS PDF

The images contained within this PDF may be used for private study, scholarship, and research only. They may not be published in print, posted on the internet, or exhibited. They may not be donated, sold, or otherwise transferred to another individual or repository without the written permission of The Museum of Modern Art Archives.

When publication is intended, publication-quality images must be obtained from SCALA Group, the Museum's agent for licensing and distribution of images to outside publishers and researchers.

If you wish to quote any of this material in a publication, an application for permission to publish must be submitted to the MoMA Archives. This stipulation also applies to dissertations and theses. All references to materials should cite the archival collection and folder, and acknowledge "The Museum of Modern Art Archives, New York."

Whether publishing an image or quoting text, you are responsible for obtaining any consents or permissions which may be necessary in connection with any use of the archival materials, including, without limitation, any necessary authorizations from the copyright holder thereof or from any individual depicted therein.

In requesting and accepting this reproduction, you are agreeing to indemnify and hold harmless The Museum of Modern Art, its agents and employees against all claims, demands, costs and expenses incurred by copyright infringement or any other legal or regulatory cause of action arising from the use of this material.

NOTICE: WARNING CONCERNING COPYRIGHT RESTRICTIONS

The copyright law of the United States (Title 17, United States Code) governs the making of photocopies or other reproductions of copyrighted material. Under certain conditions specified in the law, libraries and archives are authorized to furnish a photocopy or other reproduction. One of these specified conditions is that the photocopy or reproduction is not to be "used for any purpose other than private study, scholarship, or research." If a user makes a request for, or later uses, a photocopy or reproduction for purposes in excess of "fair use," that user may be liable for copyright infringement.

FOR STUDY PURPOSES ONLY. NOT FOR REPRODUCTION.

The Museum of Modern Art Archives, NY	Collection:	Series.Folder:
	Paul Rosenberg	III . A . 1 . 90 . a



Claude Monet Large 81 height 65

FOR STUDY PURPOSES ONLY. NOT FOR REPRODUCTION.

The Museum of Modern Art Archives, NY	Collection:	Series.Folder:
	Paul Rosenberg	III . A . 1 . 90 . a

12652 Dammit 18/22



M^c & Boudin, Greenville 67, large 24 1/2 height 11

FOR STUDY PURPOSES ONLY. NOT FOR REPRODUCTION.

The Museum of Modern Art Archives, NY	Collection:	Series.Folder:
	Paul Rosenberg	III . A . 1 . 90 . a



12581 Cl. Monet large 0,81 haut 0,65.

FOR STUDY PURPOSES ONLY. NOT FOR REPRODUCTION.

The Museum of Modern Art Archives, NY	Collection:	Series.Folder:
	Paul Rosenberg	III . A . 1 . 90 . a



12561 Sisley large om, 93 haut 0.66

FOR STUDY PURPOSES ONLY. NOT FOR REPRODUCTION.

The Museum of Modern Art Archives, NY	Collection:	Series.Folder:
	Paul Rosenberg	III . A . 1 . 90 . a



3416

FOR STUDY PURPOSES ONLY. NOT FOR REPRODUCTION.

The Museum of Modern Art Archives, NY	Collection:	Series.Folder:
	Paul Rosenberg	III . A . 1 . 90 . a

174

FOR STUDY PURPOSES ONLY. NOT FOR REPRODUCTION.

The Museum of Modern Art Archives, NY	Collection:	Series.Folder:
	<i>Paul Rosenberg</i>	<i>III . A . 1 . 90 . a</i>



FOR STUDY PURPOSES ONLY. NOT FOR REPRODUCTION.

The Museum of Modern Art Archives, NY	Collection:	Series.Folder:
	Paul Rosenberg	III . A . 1 . 90 . a

#685



FOR STUDY PURPOSES ONLY. NOT FOR REPRODUCTION.

The Museum of Modern Art Archives, NY	Collection:	Series.Folder:
	Paul Rosenberg	III . A . 1 . 90 . a

6970



FOR STUDY PURPOSES ONLY. NOT FOR REPRODUCTION.

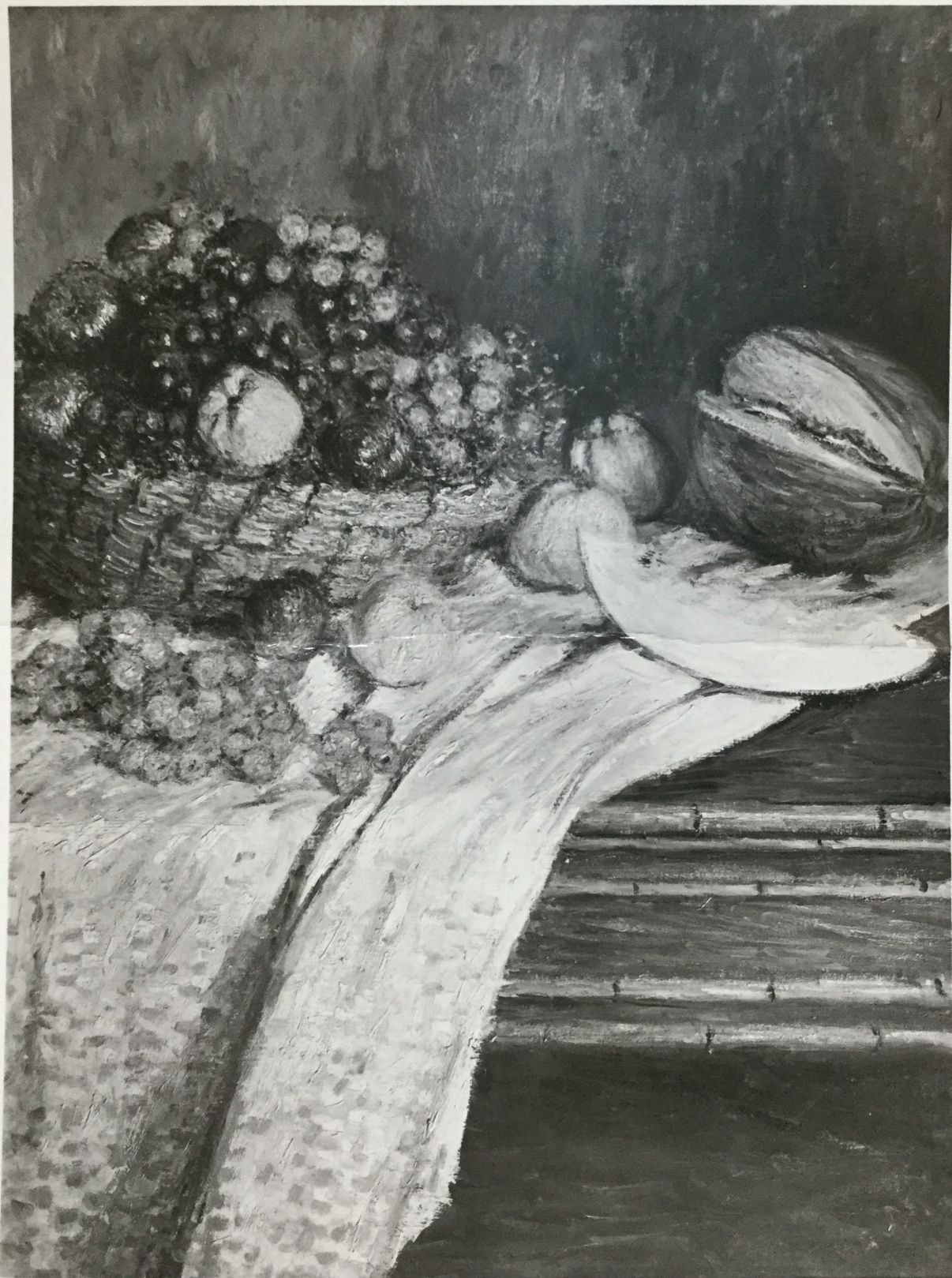
The Museum of Modern Art Archives, NY	Collection:	Series.Folder:
	Paul Rosenberg	III . A . 1 . 90 . a

2970



FOR STUDY PURPOSES ONLY. NOT FOR REPRODUCTION.

The Museum of Modern Art Archives, NY	Collection: <i>Paul Rosenberg</i>	Series.Folder: <i>III . A . 1 . 90 . a</i>
---------------------------------------	--------------------------------------	---



FOR STUDY PURPOSES ONLY. NOT FOR REPRODUCTION.

The Museum of Modern Art Archives, NY	Collection:	Series.Folder:
	Paul Rosenberg	III . A . 1 . 90 . a

3226
90x67



D18 - 33
L 73/1139

A handwritten signature or set of initials in dark ink, located to the right of the circular stamp and below the handwritten numbers.

FOR STUDY PURPOSES ONLY. NOT FOR REPRODUCTION.

The Museum of Modern Art Archives, NY	Collection:	Series.Folder:
	Paul Rosenberg	III . A . 1 . 90 . a

295f

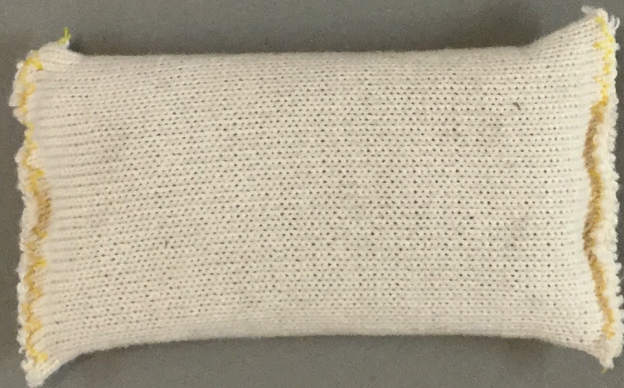


FOR STUDY PURPOSES ONLY. NOT FOR REPRODUCTION.

The Museum of Modern Art Archives, NY	Collection:	Series.Folder:
	Paul Rosenberg	III . A . 1 . 90 . a

Manet

2937



FOR STUDY PURPOSES ONLY. NOT FOR REPRODUCTION.

The Museum of Modern Art Archives, NY	Collection:	Series.Folder:
	Paul Rosenberg	III . A . 1 . 90 . a



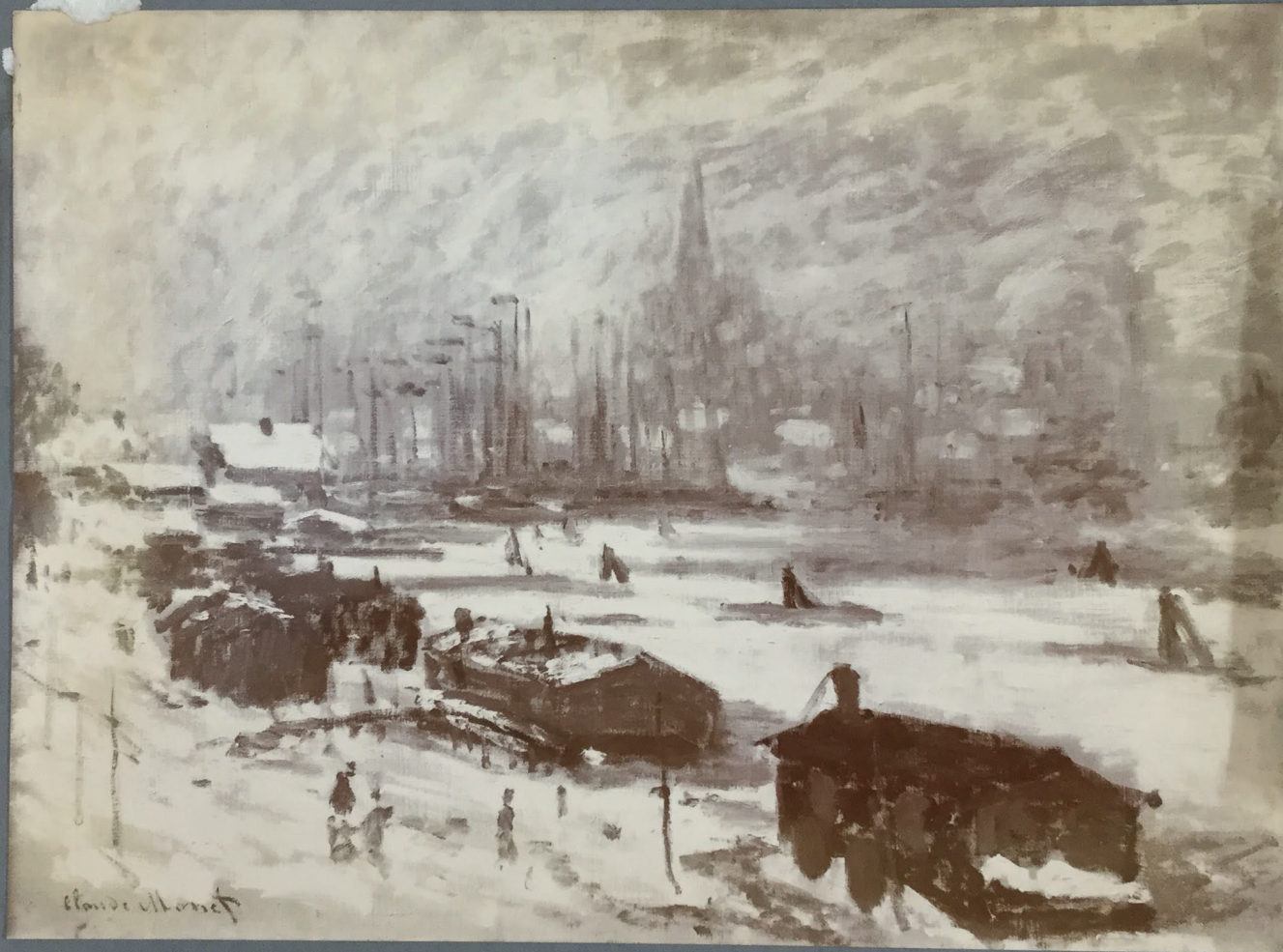
FOR STUDY PURPOSES ONLY. NOT FOR REPRODUCTION.

The Museum of Modern Art Archives, NY	Collection:	Series.Folder:
	Paul Rosenberg	III. A. 1. 90.a

686

FOR STUDY PURPOSES ONLY. NOT FOR REPRODUCTION.

The Museum of Modern Art Archives, NY	Collection:	Series.Folder:
	Paul Rosenberg	III . A . 1 . 90 . a



13156 C Monet 673 h 55

n° 542

FOR STUDY PURPOSES ONLY. NOT FOR REPRODUCTION.

The Museum of Modern Art Archives, NY	Collection:	Series.Folder:
	Paul Rosenberg	III . A . 1 . 90 . a



12599 Cl. Monet 173h 60, n°545

FOR STUDY PURPOSES ONLY. NOT FOR REPRODUCTION.

The Museum of Modern Art Archives, NY	Collection: <i>Paul Rosenberg</i>	Series.Folder: <i>III . A . 1 . 90 . a</i>
---------------------------------------	--------------------------------------	---



FOR STUDY PURPOSES ONLY. NOT FOR REPRODUCTION.

The Museum of Modern Art Archives, NY	Collection:	Series.Folder:
	Paul Rosenberg	III . A . 1 . 90 . a

#675



FOR STUDY PURPOSES ONLY. NOT FOR REPRODUCTION.

The Museum of Modern Art Archives, NY	Collection:	Series.Folder:
	Paul Rosenberg	III . A . 1 . 90 . a



Claude Monet Large Haystack 60

№ 662

FOR STUDY PURPOSES ONLY. NOT FOR REPRODUCTION.

The Museum of Modern Art Archives, NY	Collection:	Series.Folder:
	Paul Rosenberg	III . A . 1 . 90 . a



Cl. Monet Large 93 haut 43

n: 664

FOR STUDY PURPOSES ONLY. NOT FOR REPRODUCTION.

The Museum of Modern Art Archives, NY	Collection:	Series.Folder:
	Paul Rosenberg	III . A . 1 . 90 . a



FOR STUDY PURPOSES ONLY. NOT FOR REPRODUCTION.

The Museum of Modern Art Archives, NY	Collection:	Series.Folder:
	Paul Rosenberg	III . A . 1 . 90 . a

780
60 x 81



FOR STUDY PURPOSES ONLY. NOT FOR REPRODUCTION.

The Museum of Modern Art Archives, NY	Collection:	Series.Folder:
	Paul Rosenberg	III . A . 1 . 90 . a



Claude Monet - Large 92 Haut 72

FOR STUDY PURPOSES ONLY. NOT FOR REPRODUCTION.

The Museum of Modern Art Archives, NY	Collection:	Series.Folder:
	Paul Rosenberg	III . A . 1 . 90 . a



Pissarro large 65 haut 54,

FOR STUDY PURPOSES ONLY. NOT FOR REPRODUCTION.

The Museum of Modern Art Archives, NY	Collection:	Series.Folder:
	Paul Rosenberg	III . A . 1 . 90 . a



FOR STUDY PURPOSES ONLY. NOT FOR REPRODUCTION.

The Museum of Modern Art Archives, NY	Collection:	Series.Folder:
	Paul Rosenberg	III . A . 1 . 90 . a

779
50 x 81



FOR STUDY PURPOSES ONLY. NOT FOR REPRODUCTION.

The Museum of Modern Art Archives, NY	Collection:	Series.Folder:
	Paul Rosenberg	III . A . 1 . 90 . a



FOR STUDY PURPOSES ONLY. NOT FOR REPRODUCTION.

The Museum of Modern Art Archives, NY	Collection: Paul Rosenberg	Series.Folder: III . A . 1 . 90 . a
---------------------------------------	-------------------------------	--

171
68 x 90



FOR STUDY PURPOSES ONLY. NOT FOR REPRODUCTION.

The Museum of Modern Art Archives, NY	Collection:	Series.Folder:
	<i>Paul Rosenberg</i>	<i>III . A . 1 . 90 . a</i>



FOR STUDY PURPOSES ONLY. NOT FOR REPRODUCTION.

The Museum of Modern Art Archives, NY	Collection:	Series.Folder:
	Paul Rosenberg	III . A . 1 . 90 . a

#997



Boldini large 35 haut 40

nl 394

FOR STUDY PURPOSES ONLY. NOT FOR REPRODUCTION.

The Museum of Modern Art Archives, NY	Collection:	Series.Folder:
	Paul Rosenberg	III . A . 1 . 90 . a



13004 Cl. Monet large port, haut 43. n° 589

FOR STUDY PURPOSES ONLY. NOT FOR REPRODUCTION.

The Museum of Modern Art Archives, NY	Collection:	Series.Folder:
	Paul Rosenberg	III. A. 1. 90.a



Swatch Latent Large 46 hand 55

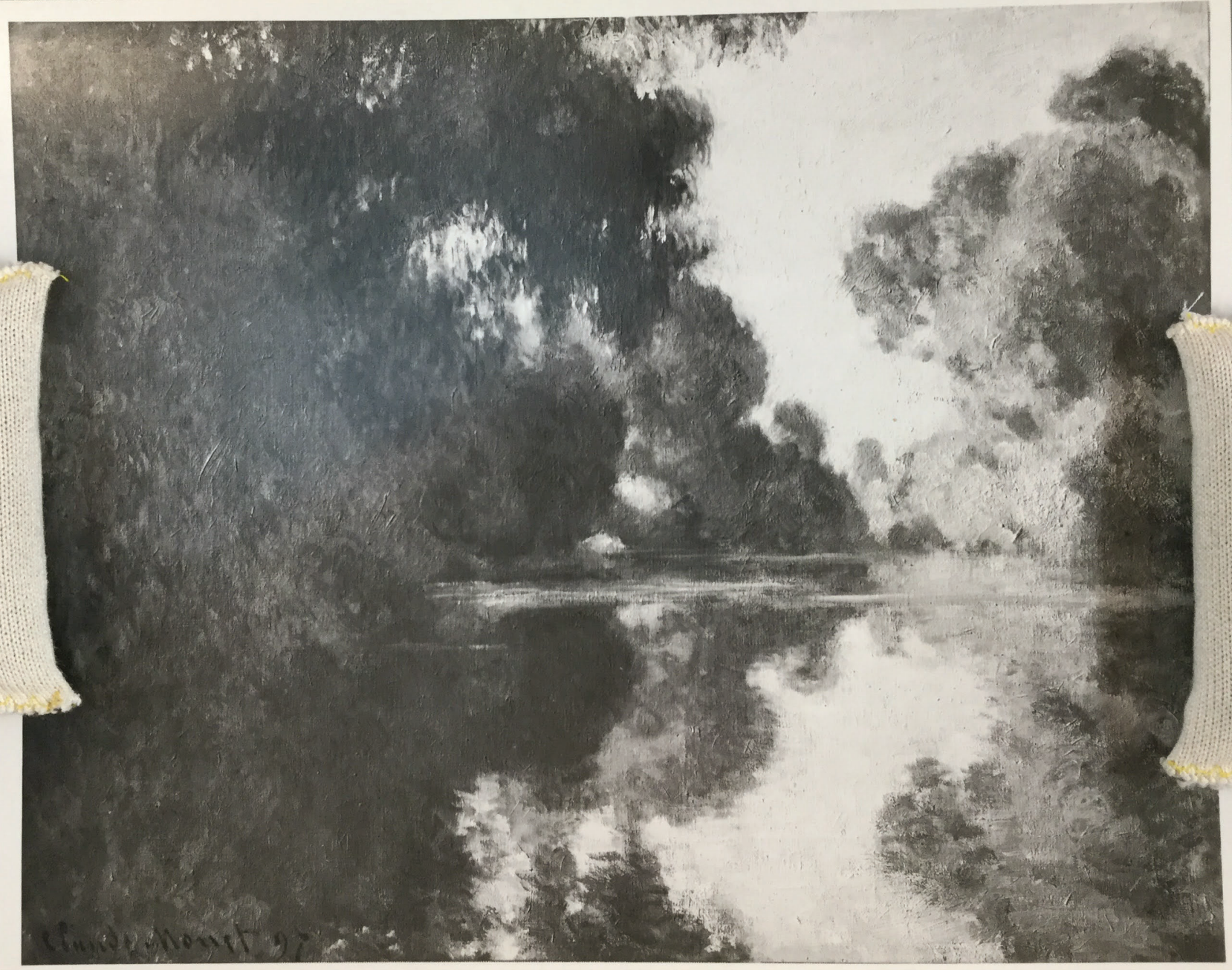
112585

FOR STUDY PURPOSES ONLY. NOT FOR REPRODUCTION.

The Museum of Modern Art Archives, NY	Collection: <i>Paul Rosenberg</i>	Series.Folder: <i>III . A . 1 . 90 . a</i>
---------------------------------------	--------------------------------------	---

13792

170



Paul Rosenberg

FOR STUDY PURPOSES ONLY. NOT FOR REPRODUCTION.

The Museum of Modern Art Archives, NY	Collection:	Series.Folder:
	Paul Rosenberg	III.A.1.90.a

#3556
73+92



FOR STUDY PURPOSES ONLY. NOT FOR REPRODUCTION.

The Museum of Modern Art Archives, NY	Collection:	Series.Folder:
	Paul Rosenberg	III . A . 1 . 90 . a

738



1

FOR STUDY PURPOSES ONLY. NOT FOR REPRODUCTION.

The Museum of Modern Art Archives, NY	Collection: <i>Paul Rosenberg</i>	Series.Folder: <i>III . A . 1 . 90 . a</i>
---------------------------------------	--------------------------------------	---

#738



FOR STUDY PURPOSES ONLY. NOT FOR REPRODUCTION.

The Museum of Modern Art Archives, NY	Collection:	Series.Folder:
	Paul Rosenberg	III . A . 1 . 90 . a



108/901

1884

V

1

FOR STUDY PURPOSES ONLY. NOT FOR REPRODUCTION.

The Museum of Modern Art Archives, NY	Collection:	Series.Folder:
	Paul Rosenberg	III . A . 1 . 90 . a

#1854
100+82cm.



FOR STUDY PURPOSES ONLY. NOT FOR REPRODUCTION.

The Museum of Modern Art Archives, NY	Collection:	Series.Folder:
	Paul Rosenberg	III. A. 1. 90. a



FOR STUDY PURPOSES ONLY. NOT FOR REPRODUCTION.

The Museum of Modern Art Archives, NY	Collection:	Series.Folder:
	Paul Rosenberg	III . A . 1 . 90 . a

#166



FOR STUDY PURPOSES ONLY. NOT FOR REPRODUCTION.

The Museum of Modern Art Archives, NY	Collection: <i>Paul Rosenberg</i>	Series.Folder: <i>III . A . 1 . 90 . a</i>
---------------------------------------	--------------------------------------	---



FOR STUDY PURPOSES ONLY. NOT FOR REPRODUCTION.

The Museum of Modern Art Archives, NY	Collection:	Series.Folder:
	Paul Rosenberg	III . A . 1 . 90 . a

3146



FOR STUDY PURPOSES ONLY. NOT FOR REPRODUCTION.

The Museum of Modern Art Archives, NY	Collection:	Series.Folder:
	Paul Rosenberg	III . A . 1 . 90 . a

798



1

3950

FOR STUDY PURPOSES ONLY. NOT FOR REPRODUCTION.

The Museum of Modern Art Archives, NY	Collection:	Series.Folder:
	Paul Rosenberg	III . A . 1 . 90 . a

#998



The Museum of Modern Art Archives, NY	Collection:	Series.Folder:
	Paul Rosenberg	III . A . 1 . 90 . a



1

104

104

FOR STUDY PURPOSES ONLY. NOT FOR REPRODUCTION.

The Museum of Modern Art Archives, NY	Collection:	Series.Folder:
	Paul Rosenberg	III . A . 1 . 90 . a

#164



FOR STUDY PURPOSES ONLY. NOT FOR REPRODUCTION.

The Museum of Modern Art Archives, NY	Collection:	Series.Folder:
	Paul Rosenberg	III . A . 1 . 90 . a



1879 Claude Monet

FOR STUDY PURPOSES ONLY. NOT FOR REPRODUCTION.

The Museum of Modern Art Archives, NY	Collection:	Series.Folder:
	Paul Rosenberg	III . A . 1 . 90 . a

167



FOR STUDY PURPOSES ONLY. NOT FOR REPRODUCTION.

The Museum of Modern Art Archives, NY	Collection:	Series.Folder:
	Paul Rosenberg	III . A . 1 . 90 . a

6405



FOR STUDY PURPOSES ONLY. NOT FOR REPRODUCTION.

The Museum of Modern Art Archives, NY	Collection:	Series.Folder:
	Paul Rosenberg	III . A . 1 . 90 . a

#2405



FOR STUDY PURPOSES ONLY. NOT FOR REPRODUCTION.

The Museum of Modern Art Archives, NY	Collection:	Series.Folder:
	Paul Rosenberg	III . A . 1 . 90 . a

778



FOR STUDY PURPOSES ONLY. NOT FOR REPRODUCTION.

The Museum of Modern Art Archives, NY	Collection: <i>Paul Rosenberg</i>	Series.Folder: <i>III . A . 1 . 90 . a</i>
---------------------------------------	--------------------------------------	---

#778



FOR STUDY PURPOSES ONLY. NOT FOR REPRODUCTION.

The Museum of Modern Art Archives, NY	Collection:	Series.Folder:
	Paul Rosenberg	III. A.1. 90.a

798



1911 Chas. M. M. M.

3837

FOR STUDY PURPOSES ONLY. NOT FOR REPRODUCTION.

The Museum of Modern Art Archives, NY	Collection:	Series.Folder:
	Paul Rosenberg	III . A . 1 . 90 . a

#798



The Museum of Modern Art Archives, NY	Collection:	Series.Folder:
	Paul Rosenberg	III . A . 1 . 90 . a



FOR STUDY PURPOSES ONLY. NOT FOR REPRODUCTION.

The Museum of Modern Art Archives, NY	Collection:	Series.Folder:
	Paul Rosenberg	III . A . 1 . 90 . a

#175



FOR STUDY PURPOSES ONLY. NOT FOR REPRODUCTION.

The Museum of Modern Art Archives, NY	Collection:	Series.Folder:
	Paul Rosenberg	III . A . 1 . 90 . a



FOR STUDY PURPOSES ONLY. NOT FOR REPRODUCTION.

The Museum of Modern Art Archives, NY	Collection:	Series.Folder:
	Paul Rosenberg	III . A . 1 . 90 . a

#160



FOR STUDY PURPOSES ONLY. NOT FOR REPRODUCTION

The Museum of Modern Art Archives, NY	Collection: <i>Paul Rosenberg</i>	Series.Folder: <i>III . A . 1 . 90 . a</i>
---------------------------------------	--------------------------------------	---

7346



1

FOR STUDY PURPOSES ONLY. NOT FOR REPRODUCTION.

The Museum of Modern Art Archives, NY	Collection:	Series.Folder:
	Paul Rosenberg	III . A . 1 . 90 . a

#1346



FOR STUDY PURPOSES ONLY. NOT FOR REPRODUCTION.

The Museum of Modern Art Archives, NY	Collection:	Series.Folder:
	Paul Rosenberg	III . A . 1 . 90 . a

691



1

3748

FOR STUDY PURPOSES ONLY. NOT FOR REPRODUCTION.

The Museum of Modern Art Archives, NY	Collection: <i>Paul Rosenberg</i>	Series.Folder: <i>III . A . 1 . 90 . a</i>
---------------------------------------	--------------------------------------	---

#691



FOR STUDY PURPOSES ONLY. NOT FOR REPRODUCTION.

The Museum of Modern Art Archives, NY	Collection:	Series.Folder:
	<i>Paul Rosenberg</i>	<i>III. A. 1. 90. a</i>

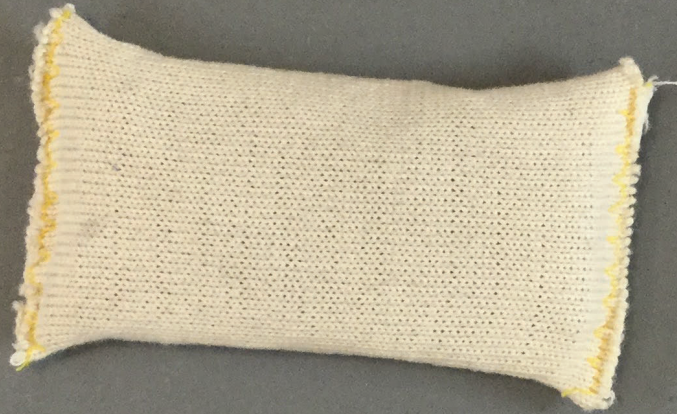


3341

FOR STUDY PURPOSES ONLY. NOT FOR REPRODUCTION.

The Museum of Modern Art Archives, NY	Collection:	Series.Folder:
	Paul Rosenberg	III . A . 1 . 90 . a

#169

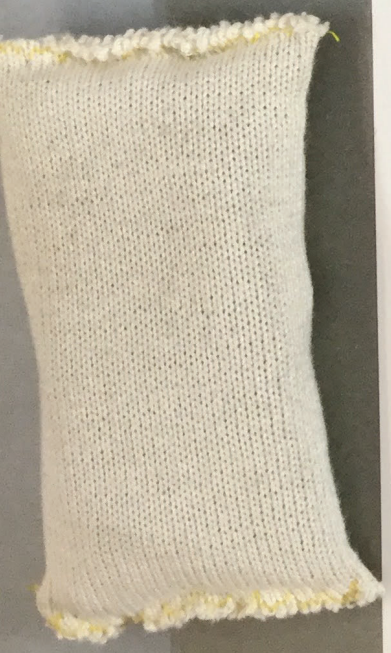


FOR STUDY PURPOSES ONLY. NOT FOR REPRODUCTION.

The Museum of Modern Art Archives, NY	Collection:	Series.Folder:
	<i>Paul Rosenberg</i>	<i>III . A . I . 90 . a</i>

8145

244x
246



FOR STUDY PURPOSES ONLY. NOT FOR REPRODUCTION.

The Museum of Modern Art Archives, NY	Collection: <i>Paul Rosenberg</i>	Series.Folder: <i>III . A . 1 . 90 . a</i>
---------------------------------------	--------------------------------------	---

#3145



FOR STUDY PURPOSES ONLY. NOT FOR REPRODUCTION.

The Museum of Modern Art Archives, NY	Collection:	Series.Folder:
	Paul Rosenberg	III . A . 1 . 90 . a



Claude Monet

FOR STUDY PURPOSES ONLY. NOT FOR REPRODUCTION.

The Museum of Modern Art Archives, NY	Collection:	Series.Folder:
	Paul Rosenberg	III . A . 1 . 90 . a

#781



FOR STUDY PURPOSES ONLY. NOT FOR REPRODUCTION.

The Museum of Modern Art Archives, NY	Collection:	Series.Folder:
	Paul Rosenberg	III . A . 1 . 90 . a



FOR STUDY PURPOSES ONLY. NOT FOR REPRODUCTION.

The Museum of Modern Art Archives, NY	Collection: <i>Paul Rosenberg</i>	Series.Folder: <i>III . A . 1 . 90 . a</i>
---------------------------------------	--------------------------------------	---

165



FOR STUDY PURPOSES ONLY. NOT FOR REPRODUCTION.

The Museum of Modern Art Archives, NY

Collection:

Paul Rosenberg

Series.Folder:

III . A . 1 . 90 . a

804



Claude Monet 1875

FOR STUDY PURPOSES ONLY. NOT FOR REPRODUCTION.

The Museum of Modern Art Archives, NY	Collection:	Series.Folder:
	Paul Rosenberg	III . A . 1 . 90 . a

804

