

CONDITIONS OF USE FOR THIS PDF

The images contained within this PDF may be used for private study, scholarship, and research only. They may not be published in print, posted on the internet, or exhibited. They may not be donated, sold, or otherwise transferred to another individual or repository without the written permission of The Museum of Modern Art Archives.

When publication is intended, publication-quality images must be obtained from SCALA Group, the Museum's agent for licensing and distribution of images to outside publishers and researchers.

If you wish to quote any of this material in a publication, an application for permission to publish must be submitted to the MoMA Archives. This stipulation also applies to dissertations and theses. All references to materials should cite the archival collection and folder, and acknowledge "The Museum of Modern Art Archives, New York."

Whether publishing an image or quoting text, you are responsible for obtaining any consents or permissions which may be necessary in connection with any use of the archival materials, including, without limitation, any necessary authorizations from the copyright holder thereof or from any individual depicted therein.

In requesting and accepting this reproduction, you are agreeing to indemnify and hold harmless The Museum of Modern Art, its agents and employees against all claims, demands, costs and expenses incurred by copyright infringement or any other legal or regulatory cause of action arising from the use of this material.

NOTICE: WARNING CONCERNING COPYRIGHT RESTRICTIONS

The copyright law of the United States (Title 17, United States Code) governs the making of photocopies or other reproductions of copyrighted material. Under certain conditions specified in the law, libraries and archives are authorized to furnish a photocopy or other reproduction. One of these specified conditions is that the photocopy or reproduction is not to be "used for any purpose other than private study, scholarship, or research." If a user makes a request for, or later uses, a photocopy or reproduction for purposes in excess of "fair use," that user may be liable for copyright infringement.

FOR STUDY PURPOSES ONLY. NOT FOR REPRODUCTION.

The Museum of Modern Art Archives, NY	Collection:	Series.Folder:
	Paul Rosenberg	III . A . 1 . 54 . b

1976
17
166



6.1.1976

The Museum of Modern Art Archives, NY	Collection:	Series.Folder:
	Paul Rosenberg	III. A. 1. 54. b

<u>COURBET</u> - 1853	PH:-
LE CHATEAU D'ORNANS	CI:-
38 $\frac{1}{2}$ " x 46 $\frac{1}{4}$ " - 97 x 116	SL:- 87
EMILE BUHRLE, ZURICH	P. :- 3792
	N:- 68
	St:- 5068



FOR STUDY PURPOSES ONLY. NOT FOR REPRODUCTION.

The Museum of Modern Art Archives, NY	Collection:	Series.Folder:
	Paul Rosenberg	III . A . 1 . 54 . 6

8979



G. Courbet

FOR STUDY PURPOSES ONLY. NOT FOR REPRODUCTION.

The Museum of Modern Art Archives, NY	Collection:	Series.Folder:
	Paul Rosenberg	III. A. 1. 54. b

<u>COURBET</u> . 1853 LES LUTTEURS 260 x 196 - 103 $\frac{1}{2}$ " x 78" HATVANY - (DISPANN?) -	PH:- CI:- SL:- P:-2979 N:- St:- S.D.
--	--



FOR STUDY PURPOSES ONLY. NOT FOR REPRODUCTION.

The Museum of Modern Art Archives, NY	Collection:	Series.Folder:
	Paul Rosenberg	III . A . 1 . 54 . 6

1347



FOR STUDY PURPOSES ONLY. NOT FOR REPRODUCTION.

The Museum of Modern Art Archives, NY	Collection:	Series.Folder:
	Paul Rosenberg	III . A . 1 . 54 . b

<u>COURBET</u> - 1867 LA PLAGE DE ST-AUBIN 54 x 65 - 21 $\frac{1}{2}$ " x 25 $\frac{1}{2}$ " GLENWAY WESCOTT -	PH: - CI: - SL: - 722 P: - 1397 N: - St: - S.O.
---	---

FOR STUDY PURPOSES ONLY. NOT FOR REPRODUCTION.

The Museum of Modern Art Archives, NY	Collection:	Series.Folder:
	Paul Rosenberg	III . A . 1 . 54 . 6



Courbet, Carge 1^m 15 Haut 0,89

photo Chas. G.

FOR STUDY PURPOSES ONLY. NOT FOR REPRODUCTION.

The Museum of Modern Art Archives, NY	Collection:	Series.Folder:
	Paul Rosenberg	III. A. 1. 54. 6

COURBET - 1876
LE CHATEAU DE CHILLON

89 x 115 - 35 $\frac{1}{2}$ " x 45 $\frac{3}{4}$ "

PH:-
CI:-
SL:-
P:-
N:-
St:-

S.D.

Manet, pastel; large 0,46, height 0,55

photo Cho 70

FOR STUDY PURPOSES ONLY. NOT FOR REPRODUCTION.

The Museum of Modern Art Archives, NY	Collection:	Series.Folder:
	Paul Rosenberg	III . A . 1 . 54 . b



1698

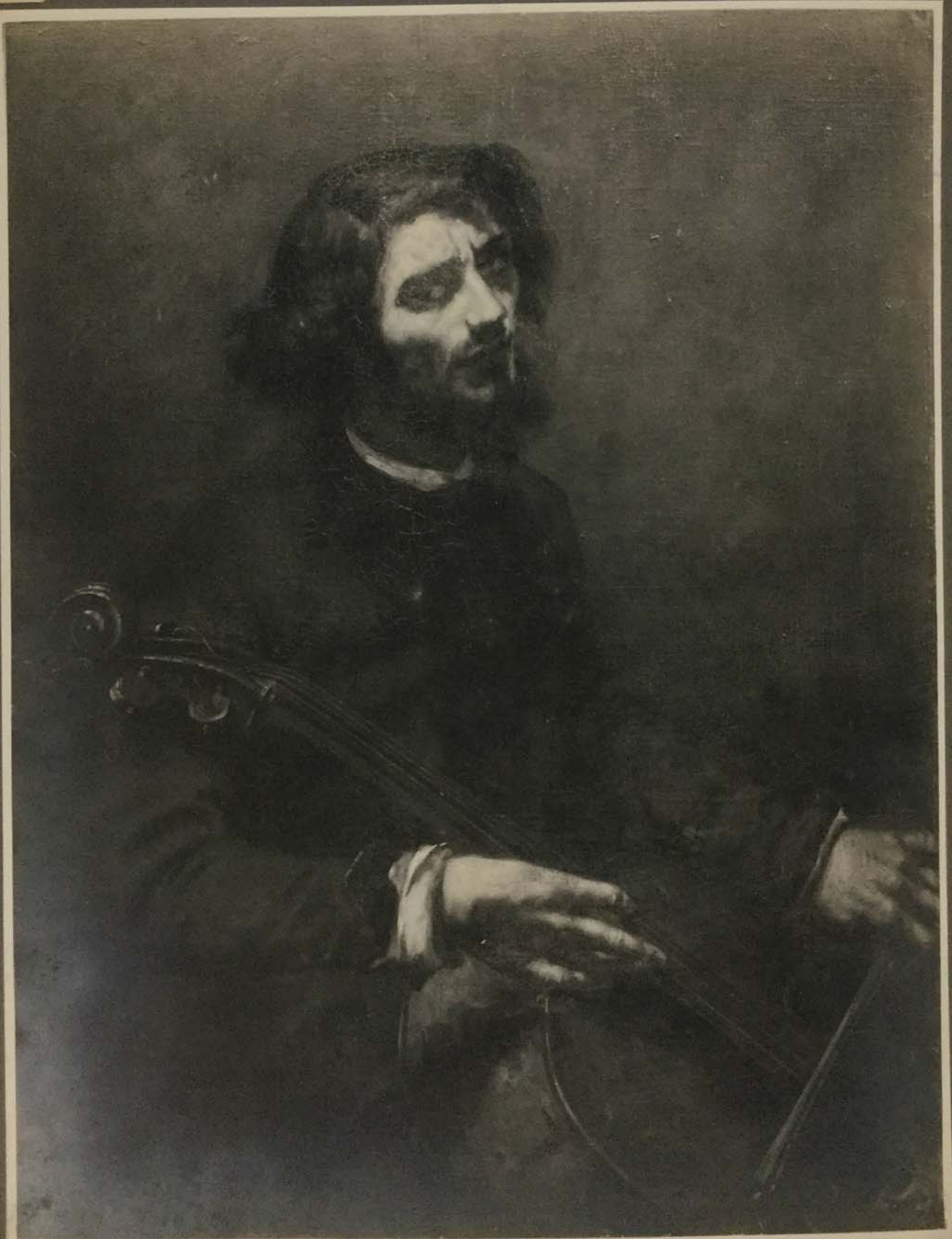
FOR STUDY PURPOSES ONLY. NOT FOR REPRODUCTION.

The Museum of Modern Art Archives, NY	Collection:	Series.Folder:
	Paul Rosenberg	III. A. 1. 54. b

<u>COURBET</u> - 1875	PH:-
PONT DANS UNE GORGE	CI:-
	SL:-
	P. - 1698
73 x 54 - 29" x 21 1/2"	N:-
	ST:-

FOR STUDY PURPOSES ONLY. NOT FOR REPRODUCTION.

The Museum of Modern Art Archives, NY	Collection:	Series.Folder:
	Paul Rosenberg	III . A . 1 . 54 . b



FOR STUDY PURPOSES ONLY. NOT FOR REPRODUCTION.

The Museum of Modern Art Archives, NY	Collection:	Series.Folder:
	Paul Rosenberg	III . A . 1 . 54 . b

COURBET - 1847
LE VIOLONCELLISTE

116 x 89 - 46" x 35½"

PH: -
CI: -
SL: -
P: - 55
N: -
ST: -

FOR STUDY PURPOSES ONLY. NOT FOR REPRODUCTION.

The Museum of Modern Art Archives, NY	Collection:	Series.Folder:
	Paul Rosenberg	III. A. 1. 54. b

1395



FOR STUDY PURPOSES ONLY. NOT FOR REPRODUCTION.

The Museum of Modern Art Archives, NY	Collection:	Series.Folder:
	Paul Rosenberg	III . A . 1 . 54 . 6

<p><u>CORBET</u> - 1862</p> <p>FEMME NUE AU CHIEN</p> <p>65 x 81 - 25 $\frac{3}{4}$" x 32"</p> <p>MASUREL</p>	<p>PH: -</p> <p>CI: -</p> <p>SL: -</p> <p>P: - 1395</p> <p>N: -</p> <p>ST: -</p>
--	--

FOR STUDY PURPOSES ONLY. NOT FOR REPRODUCTION.

The Museum of Modern Art Archives, NY	Collection:	Series.Folder:
	Paul Rosenberg	III . A . 1 . 54 . 6



FOR STUDY PURPOSES ONLY. NOT FOR REPRODUCTION.

The Museum of Modern Art Archives, NY	Collection:	Series.Folder:
	Paul Rosenberg	III . A . 1 . 54 . 6

COURBET - 1860
CHEVREUIL ET CHEVRETTE

90 x 82 - 36" x 32 1/2"

PH:-
CI:-
SL:-
P:-788
N:-
St:-

FOR STUDY PURPOSES ONLY. NOT FOR REPRODUCTION.

The Museum of Modern Art Archives, NY	Collection:	Series.Folder:
	Paul Rosenberg	III . A . 1 . 54 . 6

8963
65
54



FOR STUDY PURPOSES ONLY. NOT FOR REPRODUCTION.

The Museum of Modern Art Archives, NY	Collection:	Series.Folder:
	Paul Rosenberg	III. A. 1. 54. b

COURBET - 1868
FEMME BLONDE ENDORMIE

65x54 - 25 $\frac{3}{4}$ " x 21 $\frac{1}{2}$ "

HENRI-MATISSE

PH:-
CI:-
SL:-
P:-3963
N:-
St:-

FOR STUDY PURPOSES ONLY. NOT FOR REPRODUCTION.

The Museum of Modern Art Archives, NY	Collection:	Series.Folder:
	Paul Rosenberg	III . A . 1 . 54 . b



69

FOR STUDY PURPOSES ONLY. NOT FOR REPRODUCTION.

The Museum of Modern Art Archives, NY	Collection:	Series.Folder:
	Paul Rosenberg	III . A . 1 . 54 . b

COURBET - 1865

PORTRAIT DE FEMME A
L'OMBRELLE -

92x73 - 36 $\frac{1}{2}$ " x 29"

WILLIAM BURELL, SCOTLAND -

PH: -

CI: -

SL: -

P: - 69

N: -

ST: -

FOR STUDY PURPOSES ONLY. NOT FOR REPRODUCTION.

The Museum of Modern Art Archives, NY	Collection:	Series.Folder:
	Paul Rosenberg	III . A . 1 . 54 . 6



S. G. Webb.

FOR STUDY PURPOSES ONLY. NOT FOR REPRODUCTION.

The Museum of Modern Art Archives, NY	Collection:	Series.Folder:
	Paul Rosenberg	III . A . 1 . 54 . b

<p><u>COURBET</u> - 1875</p> <p>PAYSAGE DE NEIGE AVEC PAYSANNE AU FAGOT -</p> <p>44 x 60 - 17$\frac{1}{2}$" x 23$\frac{3}{4}$"</p>	<p>PH: -</p> <p>CI: -</p> <p>SL: -</p> <p>P: - 63</p> <p>N: -</p> <p>ST: -</p>
--	--

FOR STUDY PURPOSES ONLY. NOT FOR REPRODUCTION.

The Museum of Modern Art Archives, NY	Collection:	Series.Folder:
	Paul Rosenberg	III . A . 1 . 54 . 6



The Museum of Modern Art Archives, NY	Collection:	Series.Folder:
	Paul Rosenberg	III . A . 1 . 54 . b

Courbet

3666
60 x 73

<p><u>COURBET - 1856</u> PAYSAGE AUX CONFINS DE L'INDRE - 60 x 73 - 24" x 29" AVERELL HARRIMAN, N.Y.</p>		<p>PH: - CI: - SL: - 727 P: - 3666 N: - 1241 St: -</p>
		S.D.



FOR STUDY PURPOSES ONLY. NOT FOR REPRODUCTION.

The Museum of Modern Art Archives, NY	Collection:	Series.Folder:
	Paul Rosenberg	III . A . 1 . 54 . b



FOR STUDY PURPOSES ONLY. NOT FOR REPRODUCTION.

The Museum of Modern Art Archives, NY	Collection:	Series.Folder:
	Paul Rosenberg	III . A . 1 . 54 . 6

<u>COURBET</u> - 1862	PH:-
FLEURS AU PIED D'UN ARBRE	CI:-
71 x 107 - 28" x 42 1/2"	SL:- 161
SIDNEY BRODY, LOS ANGELES	P.:- 1870
	N:- 779
	St:-
	S.D.



FOR STUDY PURPOSES ONLY. NOT FOR REPRODUCTION.

The Museum of Modern Art Archives, NY	Collection:	Series.Folder:
	Paul Rosenberg	III . A . 1 . 54 . 6

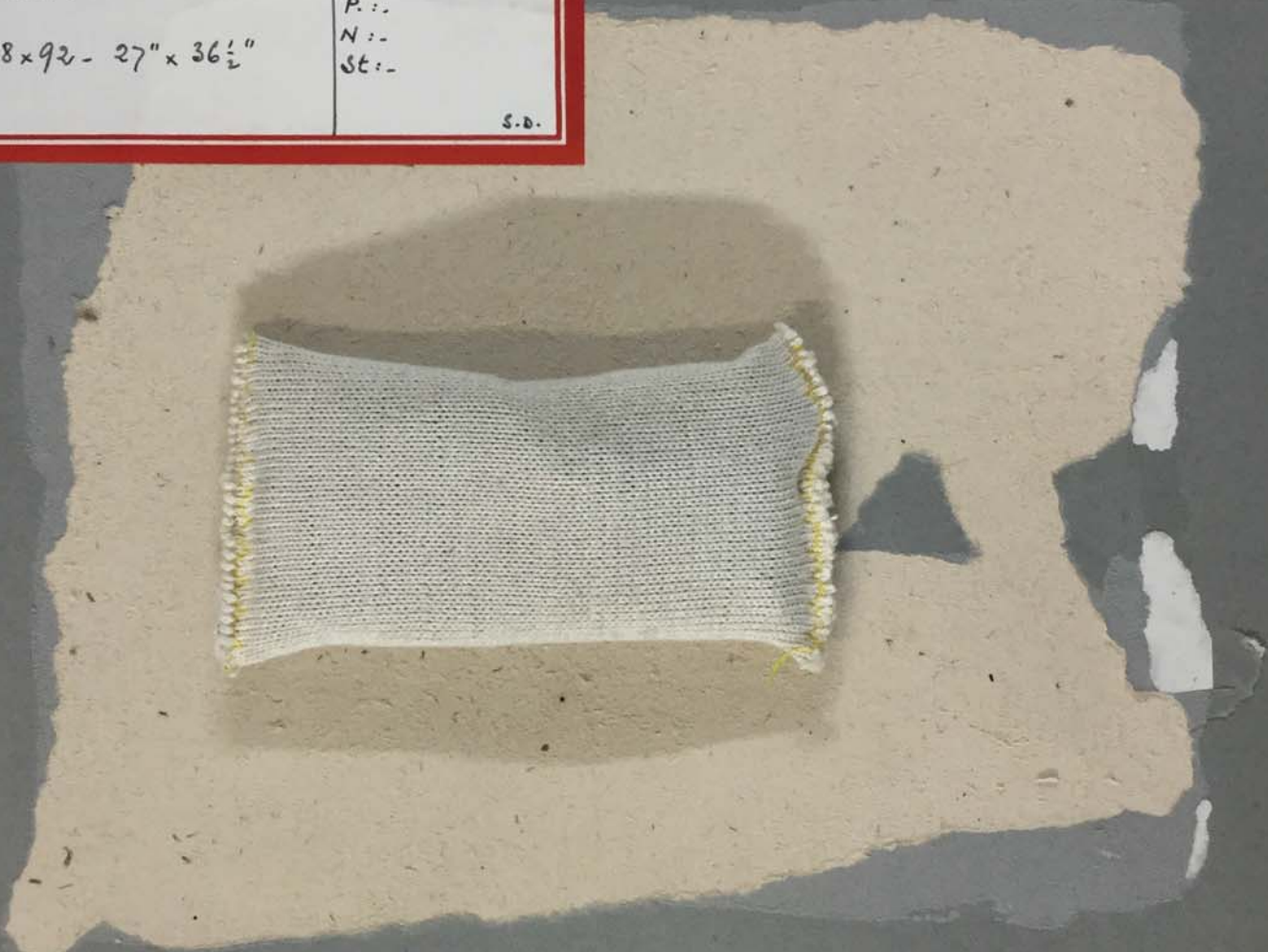


Courbet large 0,92 haut 0,68.

FOR STUDY PURPOSES ONLY. NOT FOR REPRODUCTION.

The Museum of Modern Art Archives, NY	Collection:	Series.Folder:
	Paul Rosenberg	III. A. 1. 54. 6

<p>COURBET - 1862 PAYSAGE AVEC UNE GARDEUSE DE VACHE - 68 x 92 - 27" x 36 1/2"</p>	<p>PH:- CI:- SL:- P:- N:- St:-</p> <p>S.D.</p>
---	--



FOR STUDY PURPOSES ONLY. NOT FOR REPRODUCTION.

The Museum of Modern Art Archives, NY

Collection:

Paul Rosenberg

Series.Folder:

III . A . 1 . 54 . b

3965



George Catlin

FOR STUDY PURPOSES ONLY. NOT FOR REPRODUCTION.

The Museum of Modern Art Archives, NY	Collection:	Series.Folder:
	Paul Rosenberg	III . A . 1 . 54 . b

<p><u>COURBET</u> - 1859 CERF DANS LA NEIGE 93 x 148 - 36$\frac{1}{2}$" x 58$\frac{3}{4}$"</p>	<p>PH:- CI:- SL:- P.:- 3965 N:- SE:-</p>
--	--



FOR STUDY PURPOSES ONLY. NOT FOR REPRODUCTION.

The Museum of Modern Art Archives, NY

Collection:

Paul Rosenberg

Series.Folder:

III . A . 1 . 54 . 6



FOR STUDY PURPOSES ONLY. NOT FOR REPRODUCTION.

The Museum of Modern Art Archives, NY	Collection:	Series.Folder:
	Paul Rosenberg	III . A . 1 . 54 . 6

<u>COURBET</u> - (F.) PAYSAGE AVEC ROCMERS 24 x 34 - 9 $\frac{1}{2}$ " x 13 $\frac{1}{2}$ "	PH:- CI:- SL:- P:- 67 N:- SE:-
---	---

FOR STUDY PURPOSES ONLY. NOT FOR REPRODUCTION.

The Museum of Modern Art Archives, NY	Collection:	Series.Folder:
	Paul Rosenberg	III . A . 1 . 54 . b

58



FOR STUDY PURPOSES ONLY. NOT FOR REPRODUCTION.

The Museum of Modern Art Archives, NY	Collection:	Series.Folder:
	Paul Rosenberg	III. A. 1. 54.6

<u>COURBET</u> - 1852	PH: -
LA TOURMENTE	CI: -
50 x 95 - 20" x 37 $\frac{3}{4}$ "	SL: -
	P: - 58
	N: -
	SE: -

FOR STUDY PURPOSES ONLY. NOT FOR REPRODUCTION.

The Museum of Modern Art Archives, NY	Collection:	Series.Folder:
	Paul Rosenberg	III . A . 1 . 54 . 6



The Museum of Modern Art Archives, NY	Collection:	Series.Folder:
	Paul Rosenberg	III. A. 1. 54. 6

<u>COURBET</u> - 1871 POMMES ET POIRES DANS UNE CORBEILLE. 58x71 - 23" x 28 1/2" HAVEMEYER, N.Y.	PH:- CI:- SL:- P:-54 N:- ST:- S.D.
--	--

FOR STUDY PURPOSES ONLY. NOT FOR REPRODUCTION.

The Museum of Modern Art Archives, NY	Collection:	Series.Folder:
	Paul Rosenberg	III. A. 1. 54. 6



FOR STUDY PURPOSES ONLY. NOT FOR REPRODUCTION.

The Museum of Modern Art Archives, NY	Collection:	Series.Folder:
	Paul Rosenberg	III. A. 1. 54. b

<u>COURBET</u> - 1868	PH:-
NU ALLONGÉ -	CI:-
46x55 - 18" x 22"	SL:- 107
LOUIS STERN, N.Y.	P.:- 3134
	N:- 1250
	St:-
	S.D.



FOR STUDY PURPOSES ONLY. NOT FOR REPRODUCTION.

The Museum of Modern Art Archives, NY	Collection:	Series.Folder:
	Paul Rosenberg	III . A . 1 . 54 . 6

1166



FOR STUDY PURPOSES ONLY. NOT FOR REPRODUCTION.

The Museum of Modern Art Archives, NY	Collection:	Series.Folder:
	Paul Rosenberg	III . A . 1 . 54 . 6

<u>COURBET</u> - 1869 PORTRAIT DE FEMME AUX DOIGTS CROISÉS. 92 x 73 - 36 $\frac{1}{2}$ " x 29"	PH:- CI:- SL:- P. :- N:- St:-
---	--

FOR STUDY PURPOSES ONLY. NOT FOR REPRODUCTION.

The Museum of Modern Art Archives, NY	Collection:	Series.Folder:
	Paul Rosenberg	III . A . 1 . 54 . b



FOR STUDY PURPOSES ONLY. NOT FOR REPRODUCTION.

The Museum of Modern Art Archives, NY	Collection:	Series.Folder:
	Paul Rosenberg	III. A. 1. 54. b

#1394

FOR STUDY PURPOSES ONLY. NOT FOR REPRODUCTION.

The Museum of Modern Art Archives, NY	Collection:	Series.Folder:
	Paul Rosenberg	III . A . 1 . 54 . 6



FOR STUDY PURPOSES ONLY. NOT FOR REPRODUCTION.

The Museum of Modern Art Archives, NY	Collection:	Series.Folder:
	Paul Rosenberg	III. A. 1. 54. b

<p><u>COURBET</u> - 1874 LA VIGNERONNE DE MONTREUX 100 x 81 - 39 $\frac{3}{4}$" x 32" MUSEE DE LAUSANNE -</p>	<p>PH:- CI:- SL:- P:- 1394 N:- St:-</p>
--	---

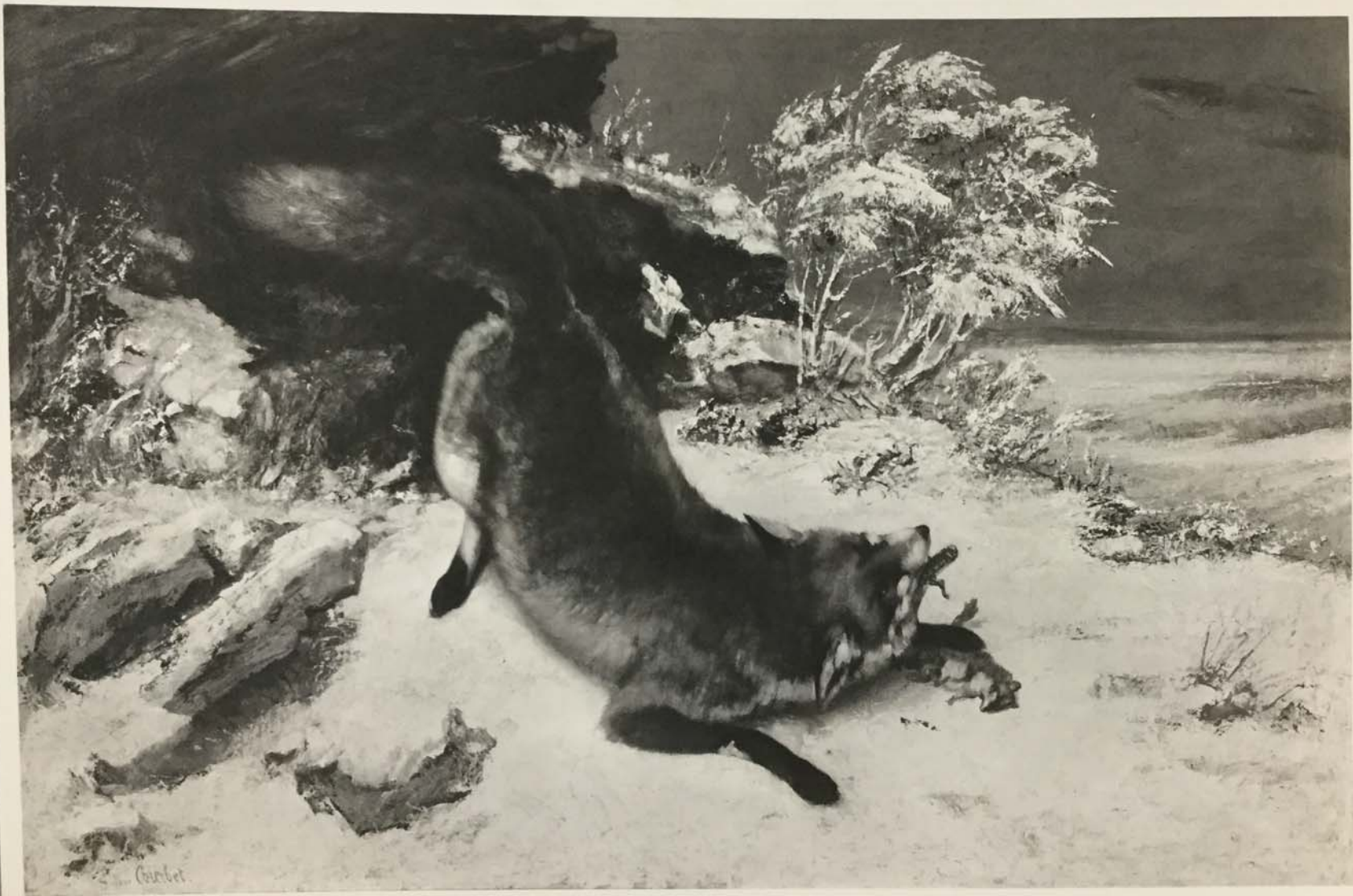


FOR STUDY PURPOSES ONLY. NOT FOR REPRODUCTION.

The Museum of Modern Art Archives, NY	Collection:	Series.Folder:
	Paul Rosenberg	III . A . 1 . 54 . b

1970

86
128



Garber

FOR STUDY PURPOSES ONLY. NOT FOR REPRODUCTION.

The Museum of Modern Art Archives, NY	Collection:	Series.Folder:
	Paul Rosenberg	III . A . 1 . 54 . 6

<u>COURBET</u> - 1861 RENARD DANS LA NEIGE 86x128 - 34"x51"	PH:- CI:- SL:- P:-3970 N:- ST:-
---	--

FOR STUDY PURPOSES ONLY. NOT FOR REPRODUCTION.

The Museum of Modern Art Archives, NY	Collection:	Series.Folder:
	Paul Rosenberg	III. A. 1. 54. b

3745



FOR STUDY PURPOSES ONLY. NOT FOR REPRODUCTION.

The Museum of Modern Art Archives, NY	Collection:	Series.Folder:
	Paul Rosenberg	III. A. 1. 54. 6

<u>COURBET - 1873</u> LE FOND DU LAC DE GENÈVE 65 x 81 - 25 $\frac{3}{4}$ " x 32"	PH:- CI:- SL:- P:-3745 N:- ST:- S.D.
---	--

FOR STUDY PURPOSES ONLY. NOT FOR REPRODUCTION.

The Museum of Modern Art Archives, NY	Collection:	Series.Folder:
	Paul Rosenberg	III . A . 1 . 54 . b



FOR STUDY PURPOSES ONLY. NOT FOR REPRODUCTION.

The Museum of Modern Art Archives, NY	Collection:	Series.Folder:
	Paul Rosenberg	III. A. 1. 54.6

COURBET 1874

LE VIEUX PONT

60x73 - 23 $\frac{3}{4}$ " x 29"

MUSEE D'ALGER

PH:-

CI:-

SL:-

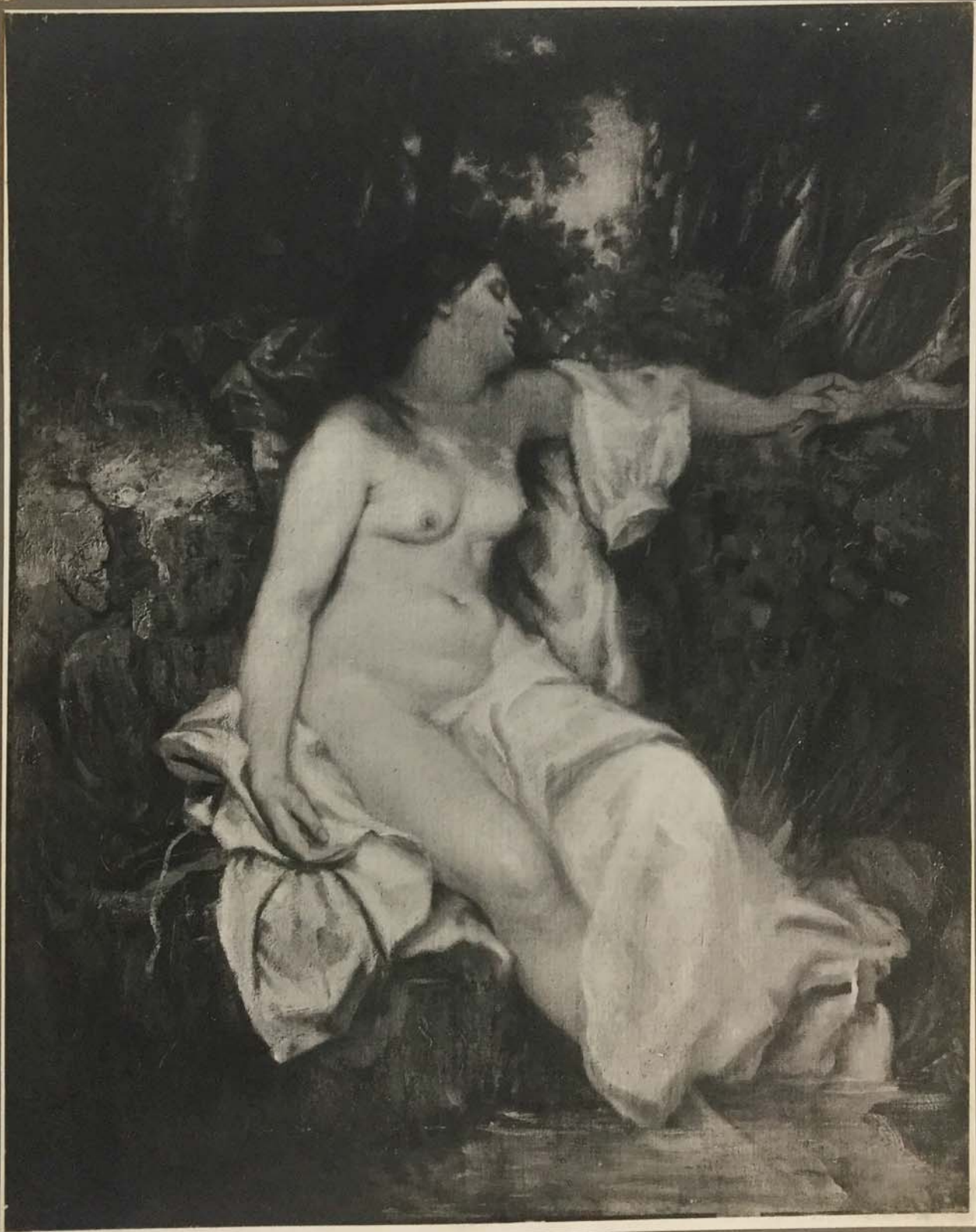
P:-2359

N:-

St:-

FOR STUDY PURPOSES ONLY. NOT FOR REPRODUCTION.

The Museum of Modern Art Archives, NY	Collection:	Series.Folder:
	Paul Rosenberg	III . A . 1 . 54 . 6



FOR STUDY PURPOSES ONLY. NOT FOR REPRODUCTION.

The Museum of Modern Art Archives, NY	Collection:	Series.Folder:
	Paul Rosenberg	III. A. 1. 54. b

<u>CORBET</u> - 1845 FEMME NUE ENDORMIE PRÈS D'UN RUISSEAU - (MIDDAY DREAM) 81 x 65 - 32 $\frac{1}{4}$ " x 25 $\frac{3}{4}$ " DETROIT ART INSTITUTE -	PH:- CI:- SL:- P:-764 N:- St:- S.D.
---	---

FOR STUDY PURPOSES ONLY. NOT FOR REPRODUCTION.

The Museum of Modern Art Archives, NY	Collection:	Series.Folder:
	Paul Rosenberg	III . A . 1 . 54 . b



The Museum of Modern Art Archives, NY	Collection:	Series.Folder:
	Paul Rosenberg	III . A . 1 . 54 . 6

COURBET - 1856
ETUDE POUR LES DEMOISELLES
DES BORDS DE LA SEINE.

65 x 81 - 25 $\frac{3}{4}$ " x 32"

PH. -
CI. -
SL. -
P. - 59
N. -
ST. -

FOR STUDY PURPOSES ONLY. NOT FOR REPRODUCTION.

The Museum of Modern Art Archives, NY	Collection:	Series.Folder:
	Paul Rosenberg	III. A. 1. 54. 6



FOR STUDY PURPOSES ONLY. NOT FOR REPRODUCTION.

The Museum of Modern Art Archives, NY	Collection:	Series.Folder:
	Paul Rosenberg	III. A. 1. 54. b

COURBET - 1872
ROCHES AU BORD DE LA MER

27 x 41 - 10 $\frac{3}{4}$ " x 16 $\frac{1}{4}$ "

PH: -
CI: -
SL: -
P: - 66
N: -
St: -

S.D.

FOR STUDY PURPOSES ONLY. NOT FOR REPRODUCTION.

The Museum of Modern Art Archives, NY	Collection:	Series.Folder:
	Paul Rosenberg	III . A . 1 . 54 . 6



The Museum of Modern Art Archives, NY	Collection:	Series.Folder:
	Paul Rosenberg	III . A . 1 . 54 . b

<p><u>COURBET</u> - 1869 PAYSAGE AVEC BICHES 46 x 56 - 18" x 22"</p>	<p>PH:- CI:- SL:- P:- 64 N:- ST:-</p>
---	---

FOR STUDY PURPOSES ONLY. NOT FOR REPRODUCTION.

The Museum of Modern Art Archives, NY

Collection:

Paul Rosenberg

Series.Folder:

III . A . 1 . 54 . 6



The Museum of Modern Art Archives, NY	Collection:	Series.Folder:
	Paul Rosenberg	III . A . 1 . 54 . b

<p><u>COURBET</u> - 1861 PAYSAGE DE NEIGE 65 x 81 - 25$\frac{3}{4}$" x 32"</p>	<p>PH:- CI:- SL:- P:- 3103 N:- St:-</p>
--	---

FOR STUDY PURPOSES ONLY. NOT FOR REPRODUCTION.

The Museum of Modern Art Archives, NY.	Collection:	Series.Folder:
	Paul Rosenberg	III . A . 1 . 54 . 6



3099

FOR STUDY PURPOSES ONLY. NOT FOR REPRODUCTION.

The Museum of Modern Art Archives, NY.	Collection:	Series.Folder:
	Paul Rosenberg	III. A. 1. 54. b

<u>COURBET</u> - 1866 PORTRAIT DE JEUNE HOMME 92 x 73 - 36 $\frac{1}{2}$ " x 29"	PH:- CI:- SL:- P:- 3099 N:- St:- S.D.
--	---

FOR STUDY PURPOSES ONLY. NOT FOR REPRODUCTION.

The Museum of Modern Art Archives, NY	Collection:	Series.Folder:
	Paul Rosenberg	III . A . 1 . 54 . 6



FOR STUDY PURPOSES ONLY. NOT FOR REPRODUCTION.

The Museum of Modern Art Archives, NY	Collection:	Series.Folder:
	Paul Rosenberg	III . A . 1 . 54 . b

CORBET - 1867
LA FEMME AU LIVRE

60 x 73 - 23 $\frac{3}{8}$ " x 29"

PH: -
CI: -
SL: -
P.: - 789
N: -
SE: -

FOR STUDY PURPOSES ONLY. NOT FOR REPRODUCTION.

The Museum of Modern Art Archives, NY	Collection:	Series.Folder:
	Paul Rosenberg	III . A . 1 . 54 . b



FOR STUDY PURPOSES ONLY. NOT FOR REPRODUCTION.

The Museum of Modern Art Archives, NY	Collection:	Series.Folder:
	Paul Rosenberg	III . A . 1 . 54 . 6

#1710 and 2596

FOR STUDY PURPOSES ONLY. NOT FOR REPRODUCTION.

The Museum of Modern Art Archives, NY	Collection:	Series.Folder:
	Paul Rosenberg	III . A . 1 . 54 . b



The Museum of Modern Art Archives, NY	Collection:	Series.Folder:
	Paul Rosenberg	III . A . 1 . 54 . b

<u>CORBET</u> - 1865-70 LA TOILETTE DE LA MARIÉE 186 x 250 - 74" x 99" SMITH COLLEGE, NORTHAMPTON	PH: - CI: - SL: - P: - 1710 • 2596 N: - SE: -
--	--

FOR STUDY PURPOSES ONLY. NOT FOR REPRODUCTION.

The Museum of Modern Art Archives, NY	Collection:	Series.Folder:
	Paul Rosenberg	III . A . 1 . 54 . b



PHOTO. ERMANN & SCHEINE

FOR STUDY PURPOSES ONLY. NOT FOR REPRODUCTION.

The Museum of Modern Art Archives, NY	Collection:	Series.Folder:
	Paul Rosenberg	III . A . 1 . 54 . b

COURBET - 1866
ETUDE POUR LA FEMME
AU PERROQUET -

PH: -
CI: -
SL: -
P: -
N: -
St: -

FOR STUDY PURPOSES ONLY. NOT FOR REPRODUCTION.

The Museum of Modern Art Archives, NY	Collection:	Series.Folder:
	Paul Rosenberg	III . A . 1 . 54 . 6

411-



S. Couzbrt.

51291

FOR STUDY PURPOSES ONLY. NOT FOR REPRODUCTION.

The Museum of Modern Art Archives, NY	Collection:	Series.Folder:
	Paul Rosenberg	III. A. 1. 54.6

<p><u>COURBET - 1876</u> SCÈNE DE NEIGE AVEC FEMME PORTANT UN FAGOT</p> <p>55 x 65 - 21 $\frac{3}{4}$" x 25 $\frac{3}{4}$"</p>	<p>PH:- CI:- SL:- P:- 411 N:- SE:-</p>
--	--

FOR STUDY PURPOSES ONLY. NOT FOR REPRODUCTION.

The Museum of Modern Art Archives, NY	Collection:	Series.Folder:
	Paul Rosenberg	III . A . 1 . 54 . b



FOR STUDY PURPOSES ONLY. NOT FOR REPRODUCTION.

The Museum of Modern Art Archives, NY	Collection:	Series.Folder:
	Paul Rosenberg	III . A . 1 . 54 . 6

<u>COURBET - 1858</u> PAYSANNE AU MADRAS 59 x 73 - 23 $\frac{1}{2}$ " x 29" H.R. STIRLIN, SI PREX -	PH:- CI:- SL:- P:-1707 N:- St:-
--	--