

## **CONDITIONS OF USE FOR THIS PDF**

The images contained within this PDF may be used for private study, scholarship, and research only. They may not be published in print, posted on the internet, or exhibited. They may not be donated, sold, or otherwise transferred to another individual or repository without the written permission of The Museum of Modern Art Archives.

When publication is intended, publication-quality images must be obtained from SCALA Group, the Museum's agent for licensing and distribution of images to outside publishers and researchers.

If you wish to quote any of this material in a publication, an application for permission to publish must be submitted to the MoMA Archives. This stipulation also applies to dissertations and theses. All references to materials should cite the archival collection and folder, and acknowledge "The Museum of Modern Art Archives, New York."

Whether publishing an image or quoting text, you are responsible for obtaining any consents or permissions which may be necessary in connection with any use of the archival materials, including, without limitation, any necessary authorizations from the copyright holder thereof or from any individual depicted therein.

In requesting and accepting this reproduction, you are agreeing to indemnify and hold harmless The Museum of Modern Art, its agents and employees against all claims, demands, costs and expenses incurred by copyright infringement or any other legal or regulatory cause of action arising from the use of this material.

### **NOTICE: WARNING CONCERNING COPYRIGHT RESTRICTIONS**

The copyright law of the United States (Title 17, United States Code) governs the making of photocopies or other reproductions of copyrighted material. Under certain conditions specified in the law, libraries and archives are authorized to furnish a photocopy or other reproduction. One of these specified conditions is that the photocopy or reproduction is not to be "used for any purpose other than private study, scholarship, or research." If a user makes a request for, or later uses, a photocopy or reproduction for purposes in excess of "fair use," that user may be liable for copyright infringement.

FOR STUDY PURPOSES ONLY. NOT FOR REPRODUCTION.

The Museum of Modern Art Archives, NY	Collection:	Series.Folder:
	Paul Rosenberg	III.A.1.103.a



FOR STUDY PURPOSES ONLY. NOT FOR REPRODUCTION.

The Museum of Modern Art Archives, NY	Collection:	Series.Folder:
	Paul Rosenberg	III.A.1.103.a

1292

115-84



FOR STUDY PURPOSES ONLY. NOT FOR REPRODUCTION.

The Museum of Modern Art Archives, NY	Collection:	Series.Folder:
	Paul Rosenberg	III.A.1.103.a

410  
97 130



Picasso  
24

FOR STUDY PURPOSES ONLY. NOT FOR REPRODUCTION.

The Museum of Modern Art Archives, NY	Collection:	Series.Folder:
	Paul Rosenberg	III.A.1.103.a

#1140  
97/130

FOR STUDY PURPOSES ONLY. NOT FOR REPRODUCTION.

The Museum of Modern Art Archives, NY	Collection:	Series.Folder:
	Paul Rosenberg	III.A.1.103.a



FOR STUDY PURPOSES ONLY. NOT FOR REPRODUCTION.

The Museum of Modern Art Archives, NY	Collection:	Series.Folder:
	Paul Rosenberg	III.A.1.103.a

<u>PICASSO_1932</u> FEMME NUE ALLONGÉE  24 x 35 - 9 1/2" x 14"  BY SIGNATURE SAIDENBERG, N.Y.	PH.: CI.: SL.: P. = 3423 H.: St.:  S.O.
--------------------------------------------------------------------------------------------------------------	--------------------------------------------------------------

FOR STUDY PURPOSES ONLY. NOT FOR REPRODUCTION.

The Museum of Modern Art Archives, NY	Collection:	Series.Folder:
	Paul Rosenberg	III.A.1.103.a



1268

Picasso



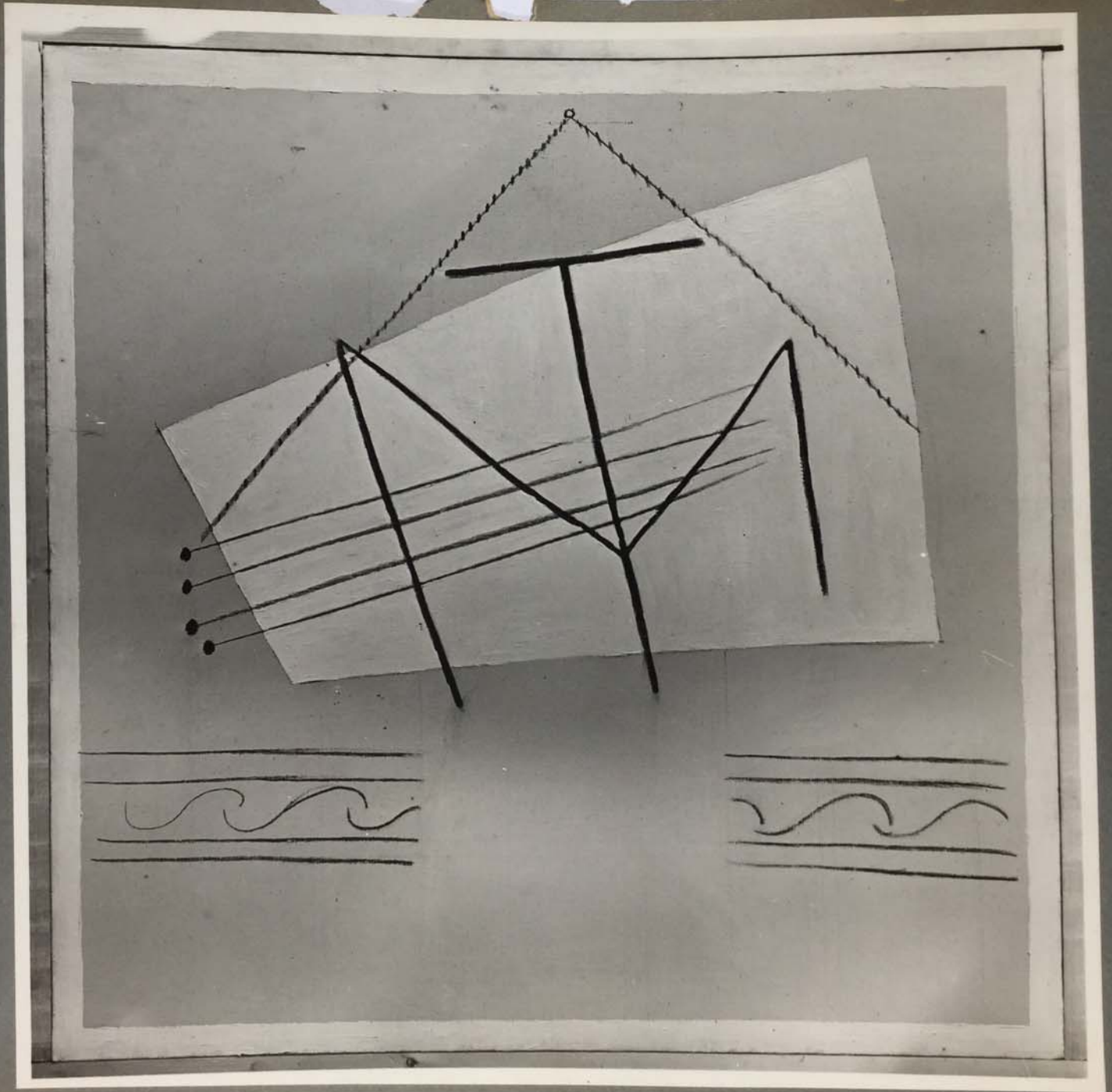
FOR STUDY PURPOSES ONLY. NOT FOR REPRODUCTION.

The Museum of Modern Art Archives, NY	Collection:	Series.Folder:
	Paul Rosenberg	III.A.1.103.a

<u>PICASSO. 1924</u> FEMME ASSISE DANS UN FAUTEUIL ROUGE. 33 x 24 - 13" x 9 1/2" DR. EVANS, CAMBRIDGE	PH. :- Cl. :- SL :- P. :- 1268 N. :- St :- 5239 S.D.
-------------------------------------------------------------------------------------------------------------------	------------------------------------------------------------------------

FOR STUDY PURPOSES ONLY. NOT FOR REPRODUCTION.

The Museum of Modern Art Archives, NY	Collection:	Series.Folder:
	Paul Rosenberg	III.A.1.103.a



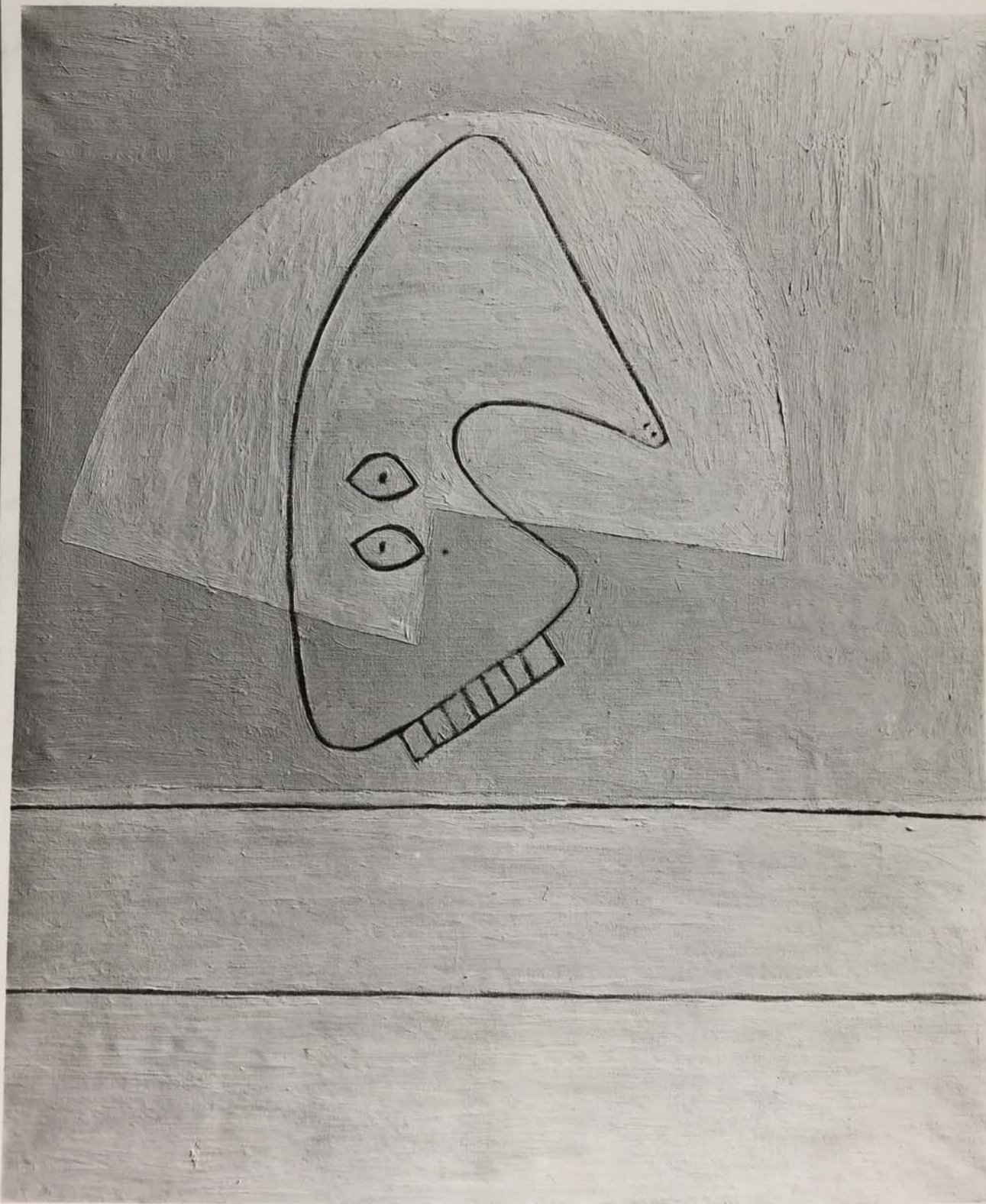
FOR STUDY PURPOSES ONLY. NOT FOR REPRODUCTION.

The Museum of Modern Art Archives, NY	Collection:	Series.Folder:
	Paul Rosenberg	III.A.1.103.a

<p>PICASSO. 1927 GUITARE ACCROCHÉE AU MUR 81 x 81 - 32" x 32"</p>	<p>PH. :- CI. :- SL. :- P. :- 1717 N. :- ST. :-</p>
---------------------------------------------------------------------------	-------------------------------------------------------------------------

FOR STUDY PURPOSES ONLY. NOT FOR REPRODUCTION.

The Museum of Modern Art Archives, NY	Collection:	Series.Folder:
	Paul Rosenberg	III.A.1.103.a



FOR STUDY PURPOSES ONLY. NOT FOR REPRODUCTION.

The Museum of Modern Art Archives, NY	Collection:	Series.Folder:
	Paul Rosenberg	III.A.1.103.a

<u>PICASSO</u> . 1928	PH.:-
TÊTE	CI.:-
	SL.:-
73 x 60 - 29" x 23 $\frac{3}{4}$ "	P. -- 2027
	N.:-
PICASSO	St.:-

FOR STUDY PURPOSES ONLY. NOT FOR REPRODUCTION.

The Museum of Modern Art Archives, NY	Collection:	Series.Folder:
	Paul Rosenberg	III.A.1.103.a



2389

4611

FOR STUDY PURPOSES ONLY. NOT FOR REPRODUCTION.

The Museum of Modern Art Archives, NY	Collection:	Series.Folder:
	Paul Rosenberg	III.A.1.103.a

<u>PICASSO</u> - 1928 OISEAU SUR UNE BRANCHE 35 x 24 - 14" x 9 $\frac{1}{4}$ "	PH. :- CI. :- SL. :- P. :- 2339 M. :- ST. :- S.D.
--------------------------------------------------------------------------------------	---------------------------------------------------------------------

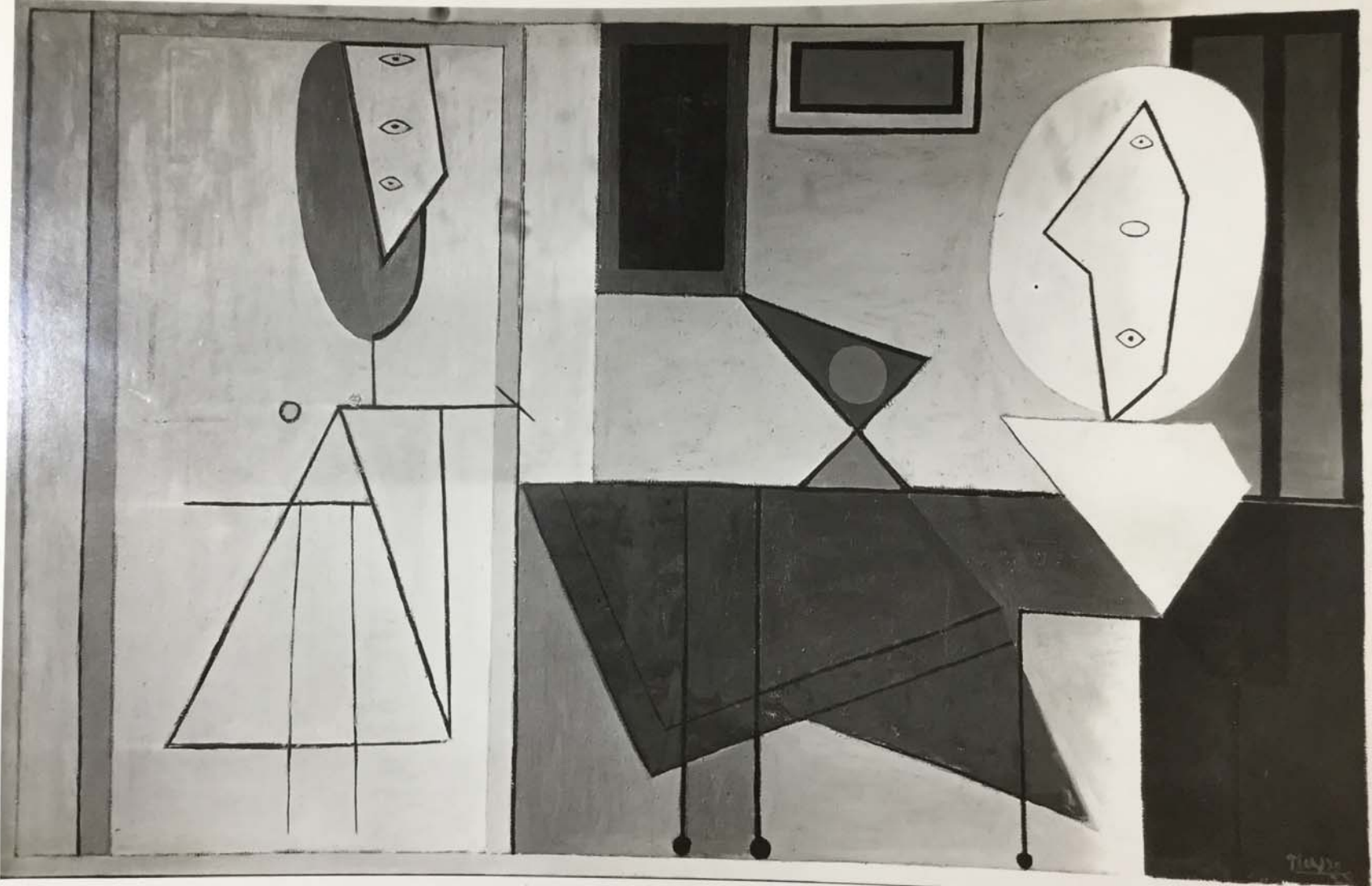
FOR STUDY PURPOSES ONLY. NOT FOR REPRODUCTION.

The Museum of Modern Art Archives, NY

Collection:  
Paul Rosenberg

Series.Folder:  
III.A.1.103.a

LS 72



FOR STUDY PURPOSES ONLY. NOT FOR REPRODUCTION.

The Museum of Modern Art Archives, NY	Collection:	Series.Folder:
	Paul Rosenberg	III.A.1.103.a

<u>PICASSO</u> - 1928	PH. I.
L'ATELIER DU PEINTRE	CI. :-
150 x 230 - 59" x 91"	SL. :-
	P. - 2300 + 2372
	N. :-
	St. :-
MUSEUM OF MODERN ART, N.Y.	S.O.

FOR STUDY PURPOSES ONLY. NOT FOR REPRODUCTION.

The Museum of Modern Art Archives, NY	Collection:	Series.Folder:
	Paul Rosenberg	III.A.1.103.a



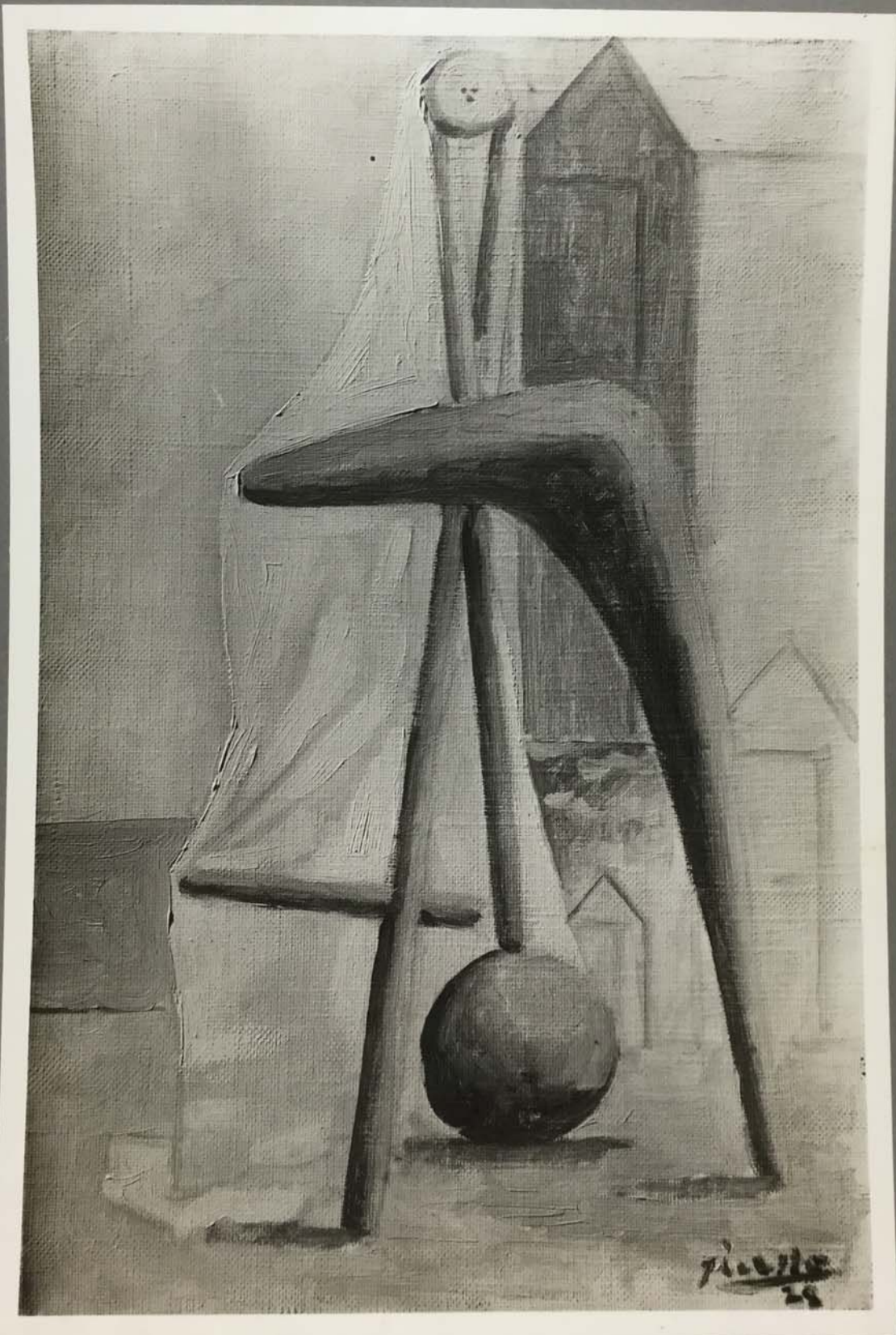
FOR STUDY PURPOSES ONLY. NOT FOR REPRODUCTION.

The Museum of Modern Art Archives, NY	Collection:	Series.Folder:
	Paul Rosenberg	III.A.1.103.a

<u>PICASSO</u> - 1929	PH. :-
BUSTE DE FEMME	CI. :-
	SL :-
73 x 60 - 29" x 23 $\frac{3}{4}$ "	P. :- 2517
	N. :-
	St. :-
	S.O.

FOR STUDY PURPOSES ONLY. NOT FOR REPRODUCTION.

The Museum of Modern Art Archives, NY	Collection:	Series.Folder:
	Paul Rosenberg	III.A.1.103.a



2837



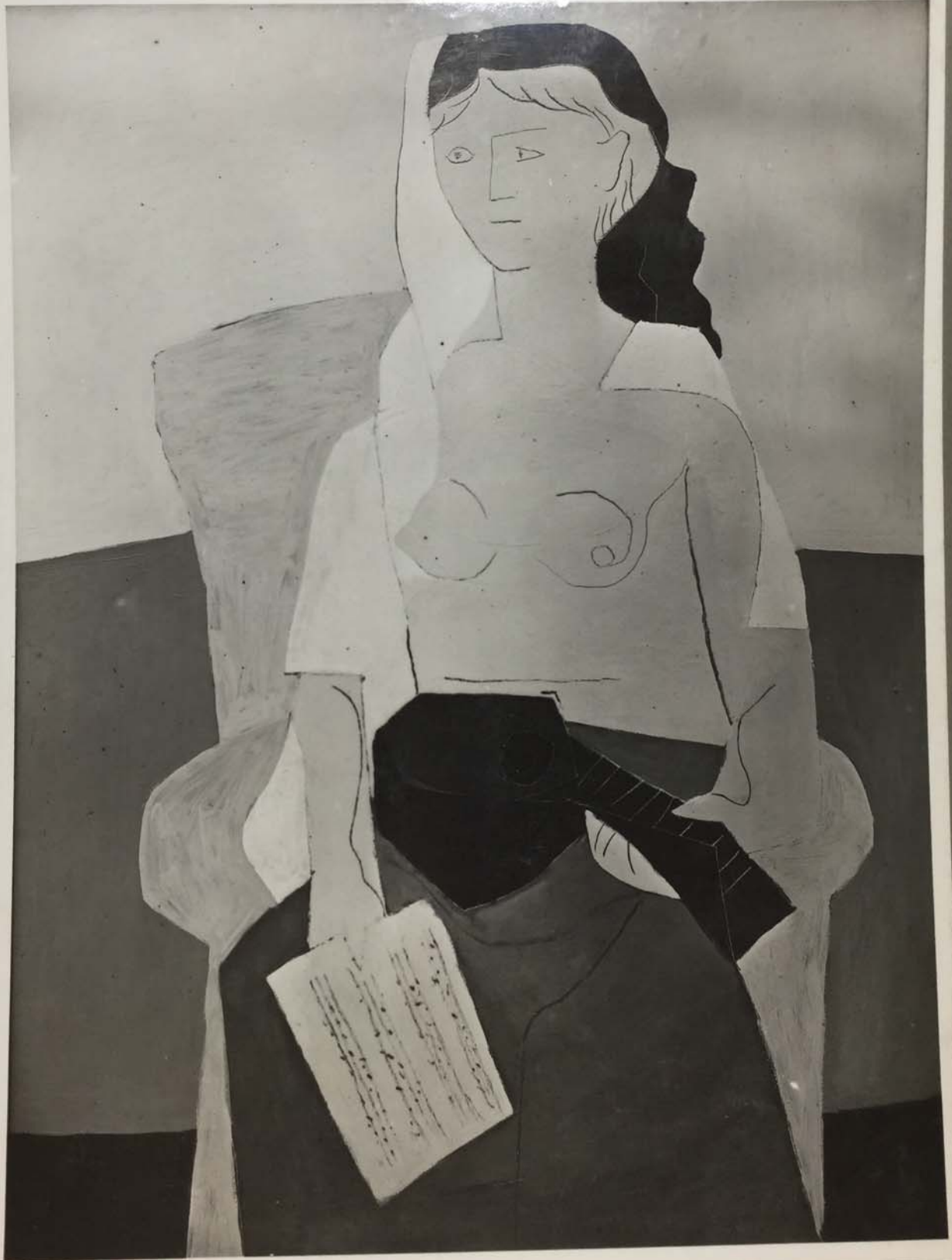
FOR STUDY PURPOSES ONLY. NOT FOR REPRODUCTION.

The Museum of Modern Art Archives, NY	Collection:	Series.Folder:
	Paul Rosenberg	III.A.1.103.a

<u>PICASSO</u> - 1928	PH. :-
BAIGNEUSE à DINARD	CL. :-
	SL. :-
33 x 22 - 13" x 8 $\frac{3}{4}$ "	P. :- 2337
	N. :-
	SE. :-
	S.D.

FOR STUDY PURPOSES ONLY. NOT FOR REPRODUCTION.

The Museum of Modern Art Archives, NY	Collection:	Series.Folder:
	Paul Rosenberg	III.A.1.103.a



FOR STUDY PURPOSES ONLY. NOT FOR REPRODUCTION.

The Museum of Modern Art Archives, NY	Collection:	Series.Folder:
	Paul Rosenberg	III.A.1.103.a

<p>PICASSO - 1925 LA FEMME A LA MANDOLINE 130 x 97 - 51<math>\frac{1}{2}</math>" x 38<math>\frac{1}{2}</math>"</p> <p>P.R.</p>	<p>PH. :- CI. :- SL. :- 277 P. :- 1325 N. :- 157 St. :-</p> <p>S.D.</p>
----------------------------------------------------------------------------------------------------------------------------------------	---------------------------------------------------------------------------------------------

FOR STUDY PURPOSES ONLY. NOT FOR REPRODUCTION.

The Museum of Modern Art Archives, NY	Collection:	Series.Folder:
	Paul Rosenberg	III.A.1.103.a



FOR STUDY PURPOSES ONLY. NOT FOR REPRODUCTION.

The Museum of Modern Art Archives, NY	Collection:	Series.Folder:
	Paul Rosenberg	III.A.1.103.a

<p>PICASSO-1925 LA FEMME SCULPTEUR 130 x 97 - 51<math>\frac{1}{2}</math>" x 38<math>\frac{1}{2}</math>" ELEONORE SAIDENBERG, N.Y.</p>	<p>PH.: CI.: SL.: P. 1.1291 N. 1. St.:</p>
---------------------------------------------------------------------------------------------------------------------------------------------------	----------------------------------------------------------------

S.D.

FOR STUDY PURPOSES ONLY. NOT FOR REPRODUCTION.

The Museum of Modern Art Archives, NY	Collection:	Series.Folder:
	Paul Rosenberg	III.A.1.103.a



The Museum of Modern Art Archives, NY	Collection:	Series.Folder:
	Paul Rosenberg	III.A.1.103.a

<p>PICASSO.1927 COMPOTIER ET GUITARE 73 x 92 - 29" x 36 1/2"</p>	<p>PH.: CI.: SL.: P.: -1714 N.: St.:</p>
--------------------------------------------------------------------------	--------------------------------------------------------------

FOR STUDY PURPOSES ONLY. NOT FOR REPRODUCTION.

The Museum of Modern Art Archives, NY

Collection:  
Paul Rosenberg

Series.Folder:  
III.A.1.103.a



The Museum of Modern Art Archives, NY	Collection:	Series.Folder:
	Paul Rosenberg	III.A.1.103.a

PICASSO. 1927  
COMPOTIER, GUITARE ET VERRE  
SUR UNE TABLE.

65 x 81 - 25  $\frac{1}{2}$ " x 32"

PH. :-  
CI. :-  
SL. :-  
P. :- 1715  
N. :-  
SE. :-

FOR STUDY PURPOSES ONLY. NOT FOR REPRODUCTION.

The Museum of Modern Art Archives, NY	Collection:	Series.Folder:
	Paul Rosenberg	III.A.1.103.a



FOR STUDY PURPOSES ONLY. NOT FOR REPRODUCTION.

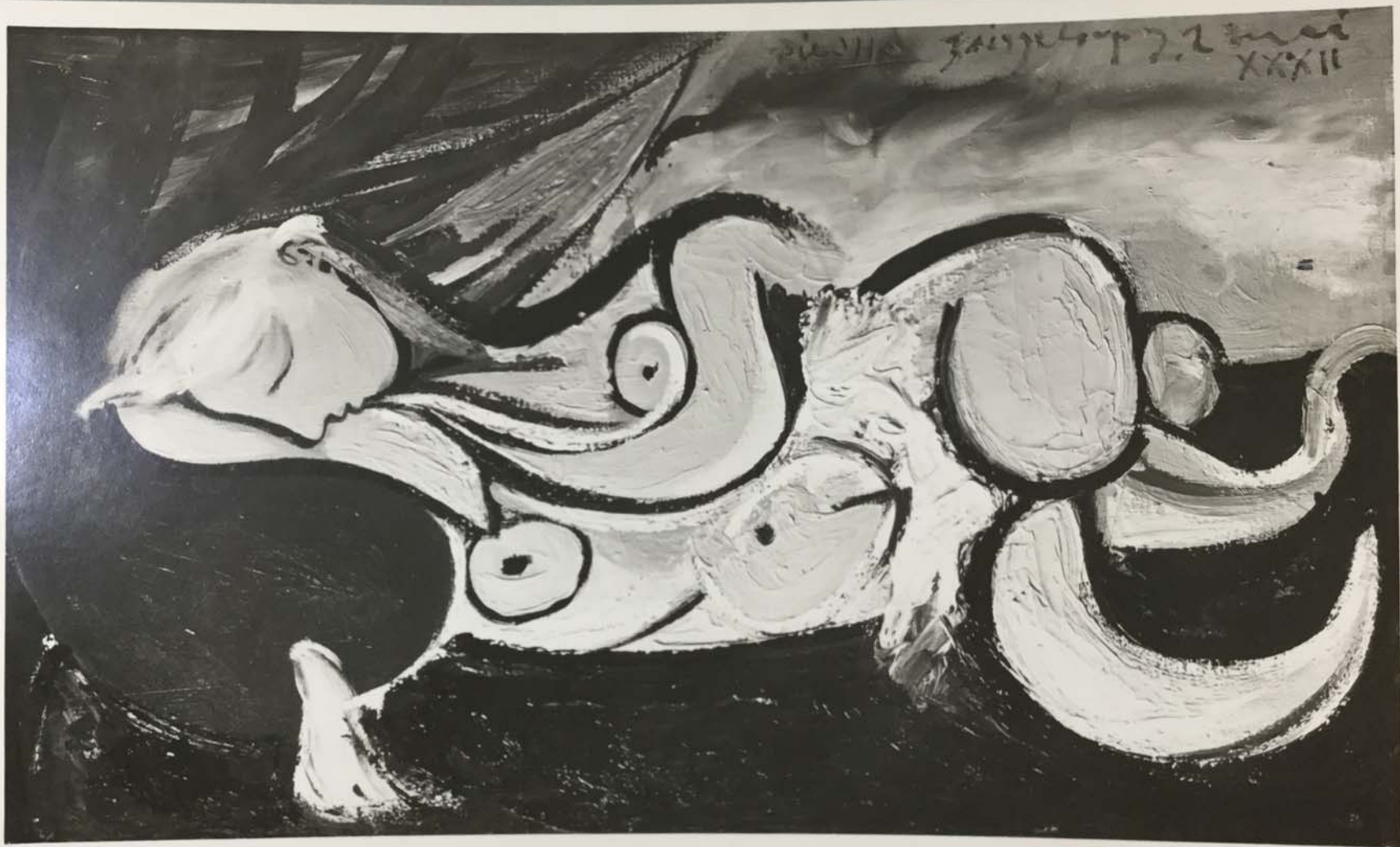
The Museum of Modern Art Archives, NY	Collection:	Series.Folder:
	Paul Rosenberg	III.A.1.103.a

<p>PICASSO. 1931 SCULPTEUR ET MODÈLE</p> <p>22 x 35 - 8<math>\frac{3}{4}</math>" x 13<math>\frac{3}{4}</math>"</p> <p>P.R.</p>	<p>PH.:- CI.:- SL:-307 P.:-3457 N.:- St.:-</p> <p>S.O.</p>
------------------------------------------------------------------------------------------------------------------------------------	--------------------------------------------------------------------------------

FOR STUDY PURPOSES ONLY. NOT FOR REPRODUCTION.

The Museum of Modern Art Archives, NY	Collection:	Series.Folder:
	Paul Rosenberg	III.A.1.103.a

3420



FOR STUDY PURPOSES ONLY. NOT FOR REPRODUCTION.

The Museum of Modern Art Archives, NY	Collection:	Series.Folder:
	Paul Rosenberg	III.A.1.103.a

<p>PICASSO - 1932</p> <p>NU ALLONGÉ AU COUSSIN ROUGE</p> <p>33 x 55 - 13" x 21 <math>\frac{3}{4}</math>"</p> <p>WITK. BARLISS. CONN.</p>	<p>PH. :-</p> <p>CI. :-</p> <p>SL. :-</p> <p>P. :- 3420</p> <p>N. :-</p> <p>St. :-</p> <p>S.O.</p>
------------------------------------------------------------------------------------------------------------------------------------------	----------------------------------------------------------------------------------------------------

FOR STUDY PURPOSES ONLY. NOT FOR REPRODUCTION.

The Museum of Modern Art Archives, NY	Collection:	Series.Folder:
	Paul Rosenberg	III.A.1.103.a



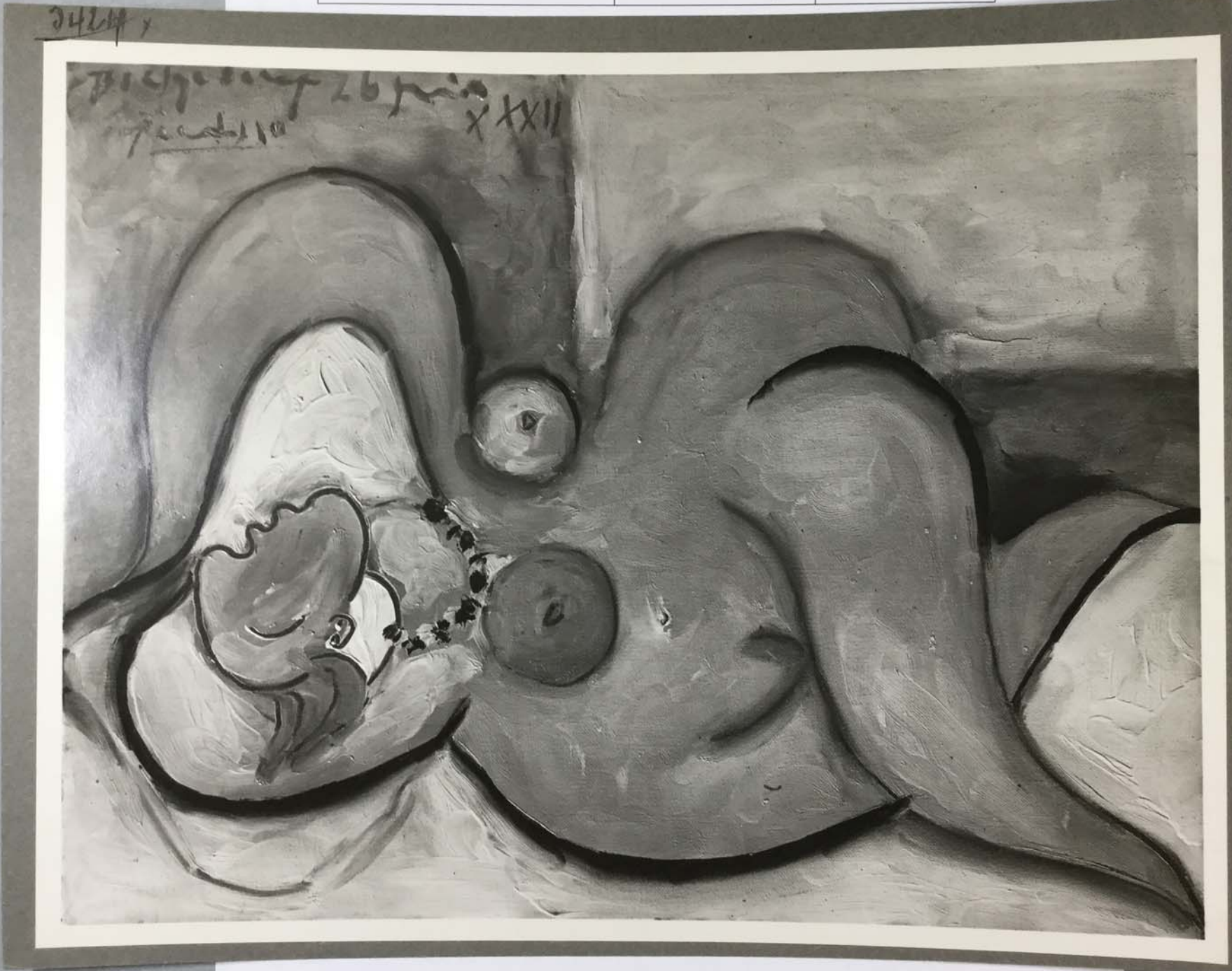
FOR STUDY PURPOSES ONLY. NOT FOR REPRODUCTION.

The Museum of Modern Art Archives, NY	Collection:	Series.Folder:
	Paul Rosenberg	III.A.1.103.a

<p>PICASSO - 1932</p> <p>FEMME NUE DANS UN FAUTEUIL ROUGE -</p> <p>130 x 97 - 51½" x 38½"</p> <p>TATE GALLERY, LONDON -</p>	<p>PH.:-</p> <p>CI.:-</p> <p>SL:-</p> <p>P. 1-3413</p> <p>N.:-</p> <p>SE:-</p> <p>S. D.</p>
---------------------------------------------------------------------------------------------------------------------------------	---------------------------------------------------------------------------------------------

FOR STUDY PURPOSES ONLY. NOT FOR REPRODUCTION.

The Museum of Modern Art Archives, NY	Collection:	Series.Folder:
	Paul Rosenberg	III.A.1.103.a



FOR STUDY PURPOSES ONLY. NOT FOR REPRODUCTION.

The Museum of Modern Art Archives, NY	Collection:	Series.Folder:
	Paul Rosenberg	III.A.1.103.a

<u>PICASSO</u> 1932 NU ALLONGÉ  27 x 35 - 10 $\frac{3}{4}$ " x 14"  HENRY FORD ZILYRLOT	PH. :- CI. :- SL :- 309 P. :- 3424 N. :- ST :-  S.D.
--------------------------------------------------------------------------------------------------------	---------------------------------------------------------------------------

FOR STUDY PURPOSES ONLY. NOT FOR REPRODUCTION.

The Museum of Modern Art Archives, NY	Collection:	Series.Folder:
	Paul Rosenberg	III.A.1.103.a

3455



FOR STUDY PURPOSES ONLY. NOT FOR REPRODUCTION.

The Museum of Modern Art Archives, NY	Collection:	Series.Folder:
	Paul Rosenberg	III.A.1.103.a

<p>PICASSO - 1932 TÊTE DE FEMME  41 x 41 - 16<math>\frac{1}{4}</math>" x 16<math>\frac{1}{4}</math>"</p>	<p>PH. :- CI. :- SL :- P. :- 3455 N. :- St :-</p> <p>S.D.</p>
----------------------------------------------------------------------------------------------------------------------	-----------------------------------------------------------------------------------

FOR STUDY PURPOSES ONLY. NOT FOR REPRODUCTION.

The Museum of Modern Art Archives, NY	Collection:	Series.Folder:
	Paul Rosenberg	III.A.1.103.a



1288  
✓

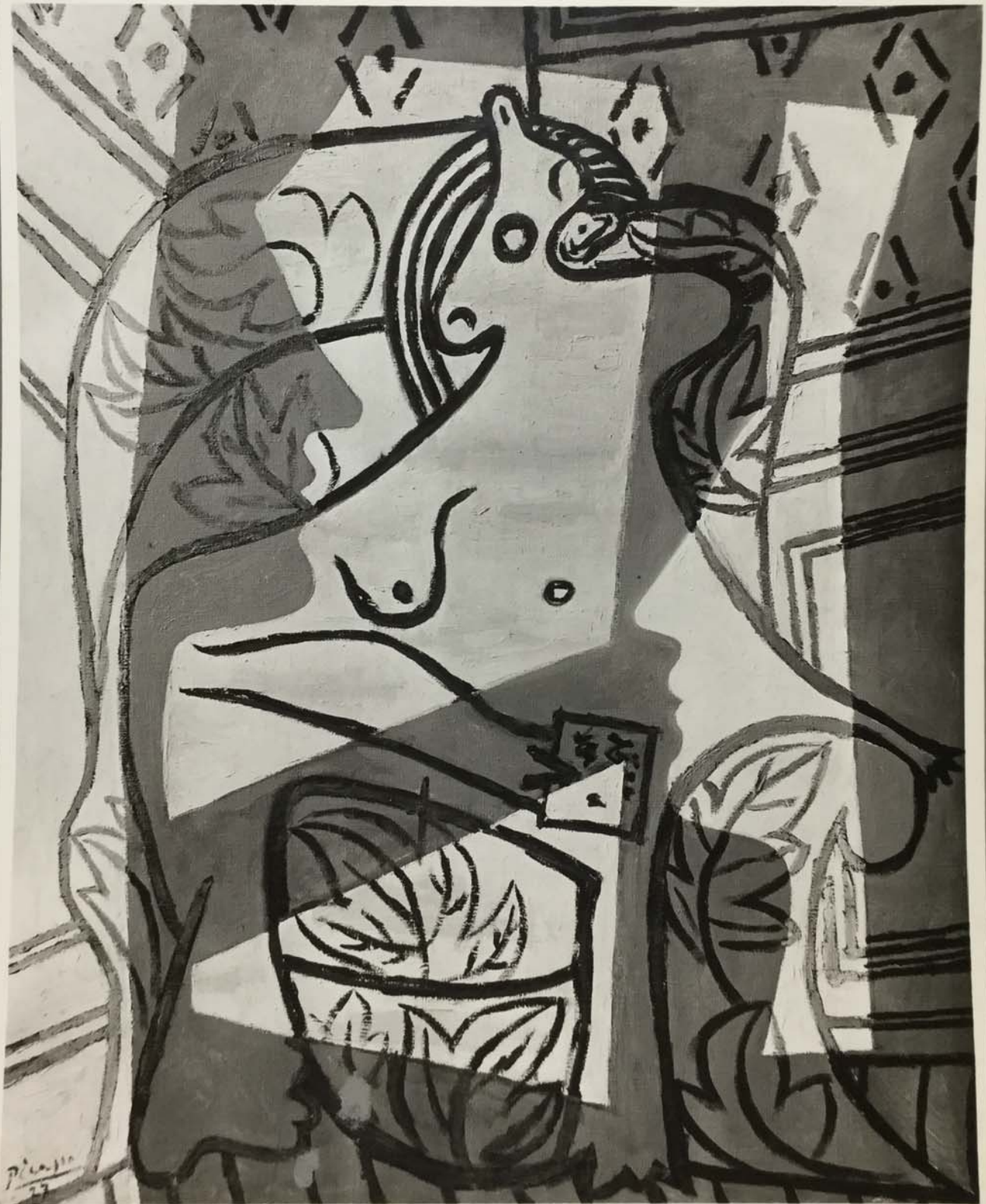
FOR STUDY PURPOSES ONLY. NOT FOR REPRODUCTION.

The Museum of Modern Art Archives, NY	Collection:	Series.Folder:
	Paul Rosenberg	III.A.1.103.a

<u>PICASSO</u> . 1924 FEMME ASSISE  33 x 24 - 13" x 9 1/2"	PH. :- CI. :- SL. :- P. :- 1283 N. :- SE. :-  S.O.
---------------------------------------------------------------------	-------------------------------------------------------------------------

FOR STUDY PURPOSES ONLY. NOT FOR REPRODUCTION.

The Museum of Modern Art Archives, NY	Collection:	Series/ Folder:
	Paul Rosenberg	III.A.1.103.a



FOR STUDY PURPOSES ONLY. NOT FOR REPRODUCTION.

The Museum of Modern Art Archives, NY	Collection:	Series.Folder:
	Paul Rosenberg	III.A.1.103.a

<p>PICASSO - 1927 FEMME DANS UN FAUTEUIL</p> <p>73 x 60 - 29" x 23<math>\frac{3}{4}</math>"</p> <p>PARKE-BERNET (1946) -</p>	<p>PH:- CI:- SL:- P. :- 2519 N. :- St. :- 5171</p> <p>S.B.</p>
----------------------------------------------------------------------------------------------------------------------------------	------------------------------------------------------------------------------------

FOR STUDY PURPOSES ONLY. NOT FOR REPRODUCTION.

The Museum of Modern Art Archives, NY	Collection:	Series.Folder:
	Paul Rosenberg	III.A.1.103.a



FOR STUDY PURPOSES ONLY. NOT FOR REPRODUCTION.

The Museum of Modern Art Archives, NY	Collection:	Series.Folder:
	Paul Rosenberg	III.A.1.103.a

<p>PICASSO_1925 BUSTE ET PALETTE DEVANT UNE FENÊTRE. 54 x 65 - 21<math>\frac{1}{2}</math>" x 25<math>\frac{3}{4}</math>" Galerie Lelong et Buvillier, PARIS</p>	<p>PH. :- Cl. :- SL :- P. :- 1265 N. :- St :-</p>
---------------------------------------------------------------------------------------------------------------------------------------------------------------------------------	-----------------------------------------------------------------------

FOR STUDY PURPOSES ONLY. NOT FOR REPRODUCTION.

The Museum of Modern Art Archives, NY	Collection:	Series.Folder:
	Paul Rosenberg	III.A.1.103.a

22



FOR STUDY PURPOSES ONLY. NOT FOR REPRODUCTION.

The Museum of Modern Art Archives, NY	Collection:	Series.Folder:
	Paul Rosenberg	III.A.1.103.a

<u>PICASSO</u> - 1929 PERSONNAGES -  33 x 41 - 13" x 16"	PH. :- CI. :- SL :- P. :- 2522 N. :- ST :-  S. D.
-------------------------------------------------------------------	------------------------------------------------------------------------

FOR STUDY PURPOSES ONLY. NOT FOR REPRODUCTION.

The Museum of Modern Art Archives, NY	Collection:	Series.Folder:
	Paul Rosenberg	III.A.1.103.a



FOR STUDY PURPOSES ONLY. NOT FOR REPRODUCTION.

The Museum of Modern Art Archives, NY	Collection:	Series.Folder:
	Paul Rosenberg	III.A.1.103.a

<p>PICASSO_1928 LA PLAGE À DINARD</p> <p>41 x 22 - 13" x 8 <math>\frac{3}{4}</math>"</p>	<p>PH.:- CI.:- SL:- P.:-2525 N.:- ST:-</p> <p>S.2</p>
----------------------------------------------------------------------------------------------	---------------------------------------------------------------------------

FOR STUDY PURPOSES ONLY. NOT FOR REPRODUCTION.

The Museum of Modern Art Archives, NY	Collection:	Series.Folder:
	Paul Rosenberg	III.A.1.103.a



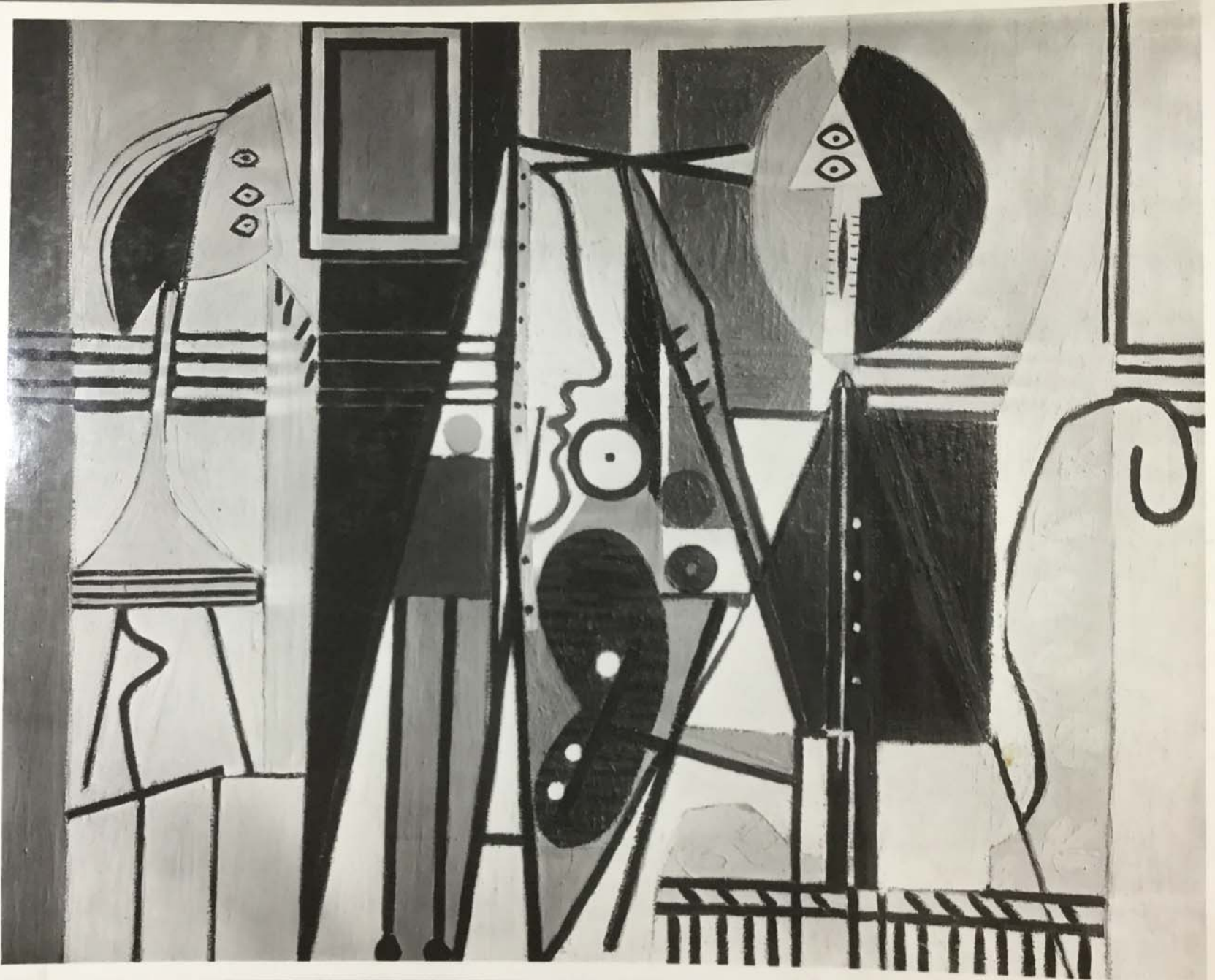
FOR STUDY PURPOSES ONLY. NOT FOR REPRODUCTION.

The Museum of Modern Art Archives, NY	Collection:	Series.Folder:
	Paul Rosenberg	III.A.1.103.a

<u>PICASSO</u> - 1929 FIGURES, LA DANSE  33 x 41 - 13" x 16"  P.R.	PH. :- CI. :- SL. :- 304 P. :- 2521 N. :- 776 St. :-  S.O.
-----------------------------------------------------------------------------------	---------------------------------------------------------------------------------

FOR STUDY PURPOSES ONLY. NOT FOR REPRODUCTION.

The Museum of Modern Art Archives, NY	Collection:	Series.Folder:
	Paul Rosenberg	III.A.1.103.a



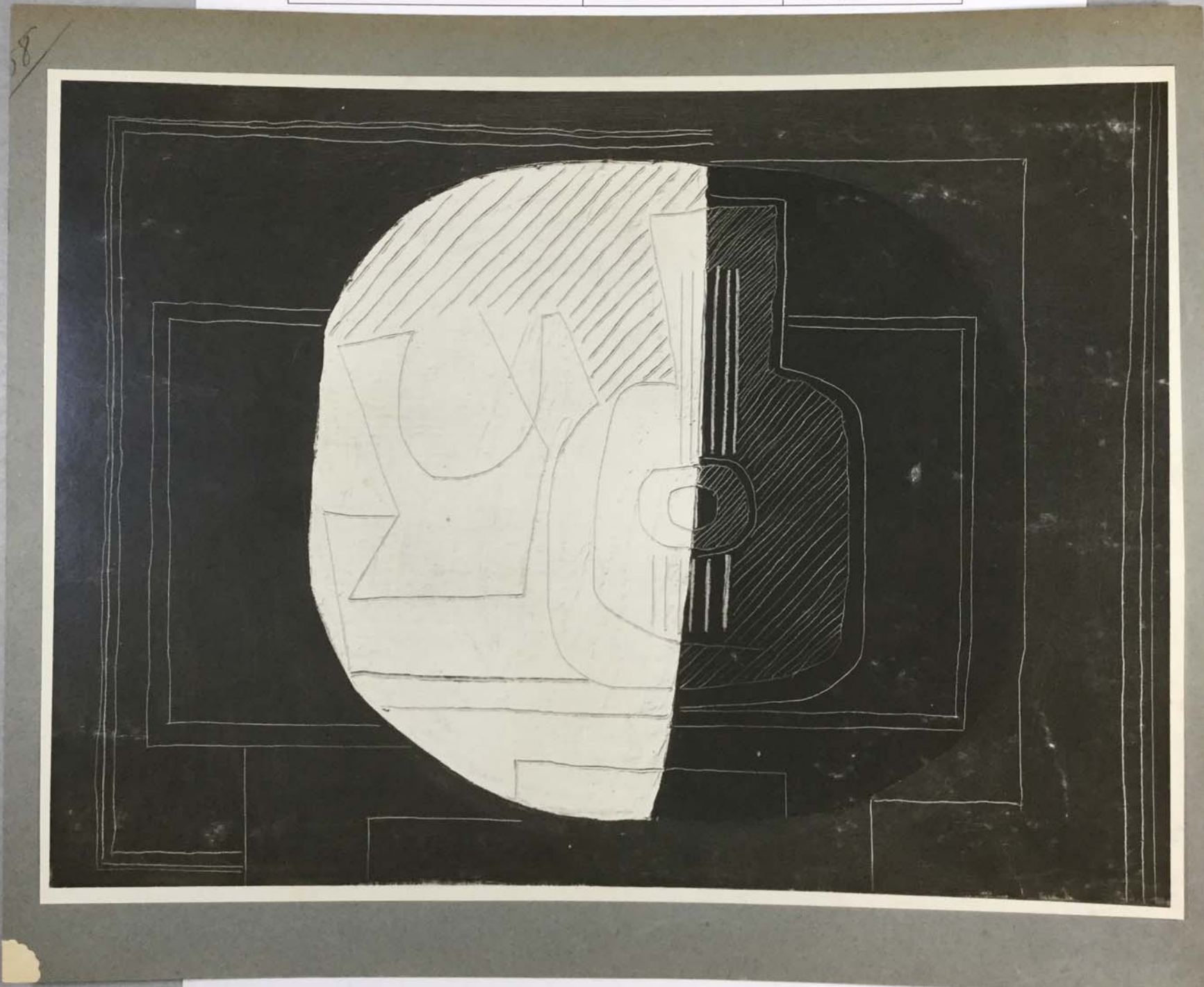
FOR STUDY PURPOSES ONLY. NOT FOR REPRODUCTION.

The Museum of Modern Art Archives, NY	Collection:	Series.Folder:
	Paul Rosenberg	III.A.1.103.a

<u>PICASSO</u> - 1928	PH.:-
LE PEINTRE ET SON MODÈLE	CL.:-
130 x 162 - 51½" x 64"	SL.:-
57 St. James, N.Y.	P. :- 2303
	N. :-
	St.:-

FOR STUDY PURPOSES ONLY. NOT FOR REPRODUCTION.

The Museum of Modern Art Archives, NY	Collection:	Series.Folder:
	Paul Rosenberg	III.A.1.103.a



FOR STUDY PURPOSES ONLY. NOT FOR REPRODUCTION.

The Museum of Modern Art Archives, NY	Collection:	Series.Folder:
	Paul Rosenberg	III.A.1.103.a

<u>PICASSO.1925</u> COMPOTIER ET GUITARE  77 x 106 - 30 $\frac{1}{2}$ " x 42"	PH. :- CI. :- SL :- P. :- 1158 N. :- ST :-
----------------------------------------------------------------------------------------	-----------------------------------------------------------

FOR STUDY PURPOSES ONLY. NOT FOR REPRODUCTION.

The Museum of Modern Art Archives, NY

Collection:  
Paul Rosenberg

Series.Folder:  
III.A.1.103.a

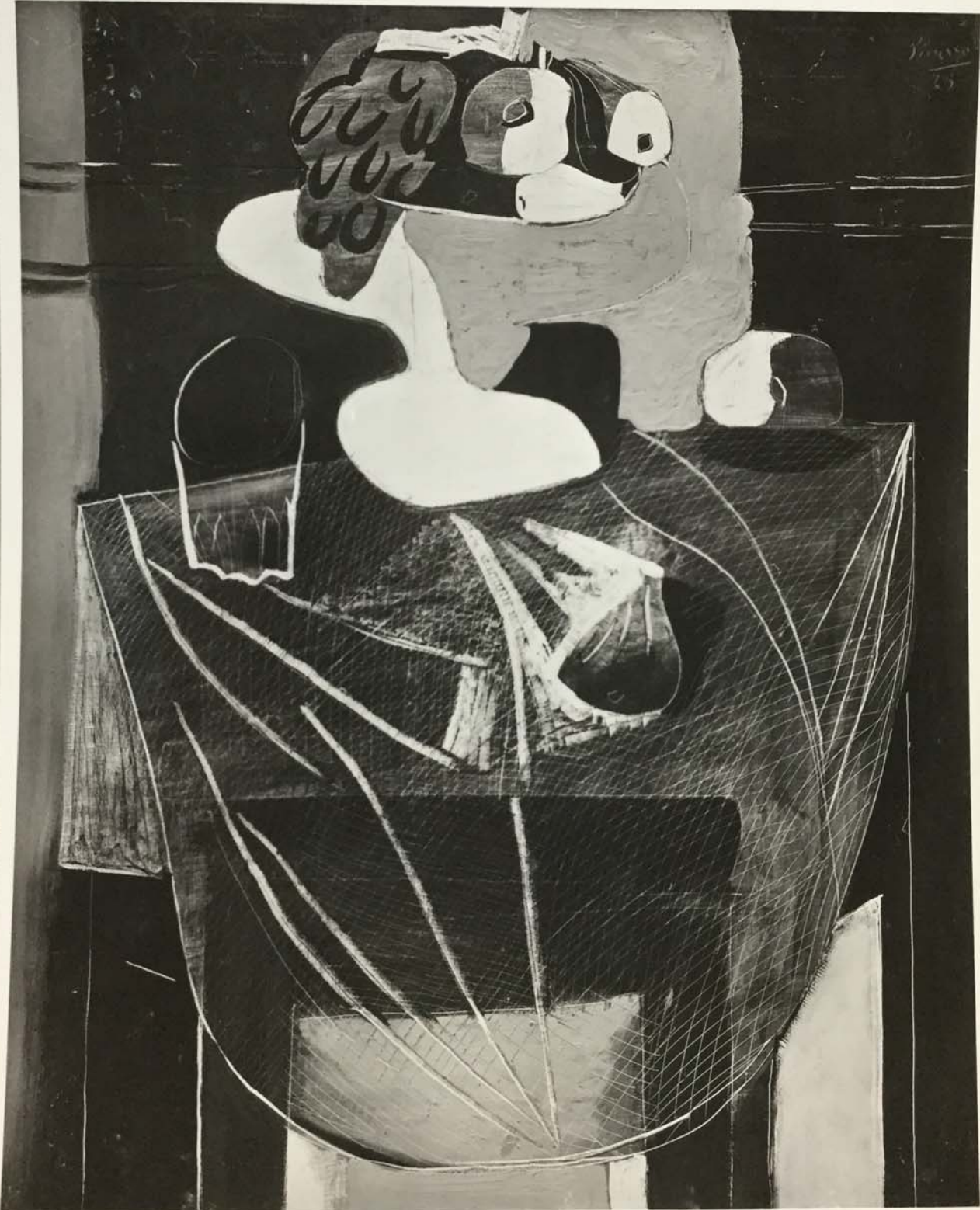


The Museum of Modern Art Archives, NY	Collection:	Series.Folder:
	Paul Rosenberg	III.A.1.103.a

<p>PICASSO. 1925</p> <p>NATURE MORTE A LA CAGE D'OISEAU.</p> <p>81 x 100 - 32" x 39 <math>\frac{3}{4}</math>"</p> <p>ILKISHIYAMA, JAPON.</p>	<p>PH. :-</p> <p>CI. :-</p> <p>SL :-</p> <p>P. :- 1296</p> <p>N. :-</p> <p>St. :-</p> <p>S.D.</p>
--------------------------------------------------------------------------------------------------------------------------------------------------	---------------------------------------------------------------------------------------------------

FOR STUDY PURPOSES ONLY. NOT FOR REPRODUCTION.

The Museum of Modern Art Archives, NY	Collection:	Series.Folder:
	Paul Rosenberg	III.A.1.103.a



FOR STUDY PURPOSES ONLY. NOT FOR REPRODUCTION.

The Museum of Modern Art Archives, NY	Collection:	Series.Folder:
	Paul Rosenberg	III.A.1.103.a

<u>PICASSO</u> - 1925	PH.:-
LE FILET	CI.:-
	SL:- 276
	P. :- 1293
100 x 81 - 39 $\frac{3}{4}$ " x 32"	N. :- 159
	SE:-
P.R.	

1293

FOR STUDY PURPOSES ONLY. NOT FOR REPRODUCTION.

The Museum of Modern Art Archives, NY	Collection:	Series.Folder:
	Paul Rosenberg	III.A.1.103.a



FOR STUDY PURPOSES ONLY. NOT FOR REPRODUCTION.

The Museum of Modern Art Archives, NY	Collection:	Series.Folder:
	Paul Rosenberg	III.A.1.103.a

<p>PICASSO 1925 MÈRE ET ENFANT 24 x 19 - 9½" x 7½"</p>	<p>PH. :- CI. :- SL. :- P. :- 1280 N. :- SE. :-</p> <p>S.O.</p>
----------------------------------------------------------------	-------------------------------------------------------------------------------------

FOR STUDY PURPOSES ONLY. NOT FOR REPRODUCTION.

The Museum of Modern Art Archives, NY	Collection:	Series.Folder:
	Paul Rosenberg	III.A.1.103.a

134



1011

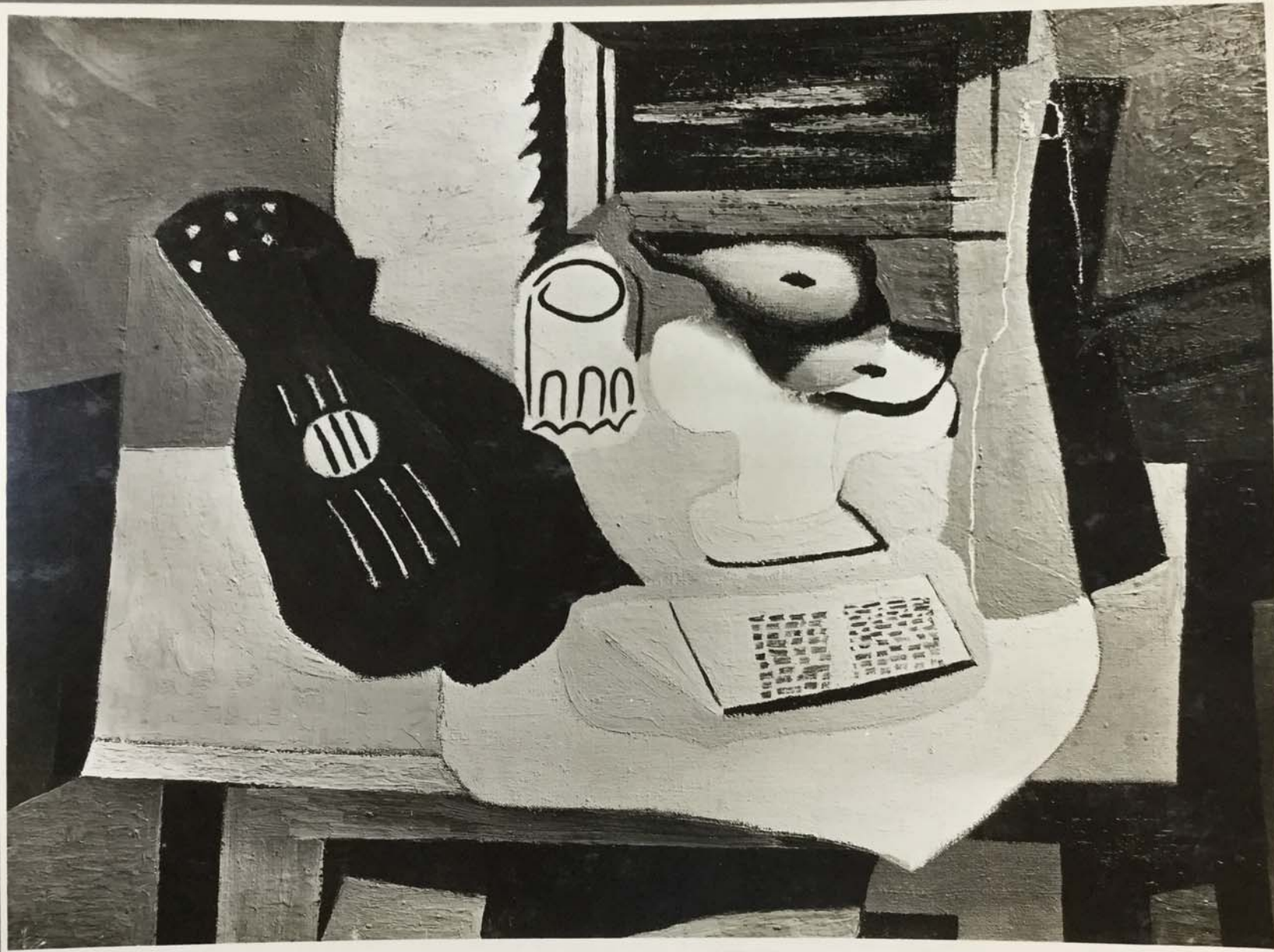
The Museum of Modern Art Archives, NY	Collection:	Series.Folder:
	Paul Rosenberg	III.A.1.103.a

<p>PICASSO - 1924</p> <p>COMPOTIER DE FRUITS SUR UNE TABLE -</p> <p>24 x 35 - 9 <math>\frac{1}{2}</math>" x 13 <math>\frac{3}{4}</math>"</p>	<p>PH. :-</p> <p>CI. :-</p> <p>SL :-</p> <p>P. :- 1134</p> <p>N. :-</p> <p>SE :-</p> <p>S.D.</p>
--------------------------------------------------------------------------------------------------------------------------------------------------	--------------------------------------------------------------------------------------------------

FOR STUDY PURPOSES ONLY. NOT FOR REPRODUCTION.

The Museum of Modern Art Archives, NY	Collection:	Series.Folder:
	Paul Rosenberg	III.A.1.103.a

1102

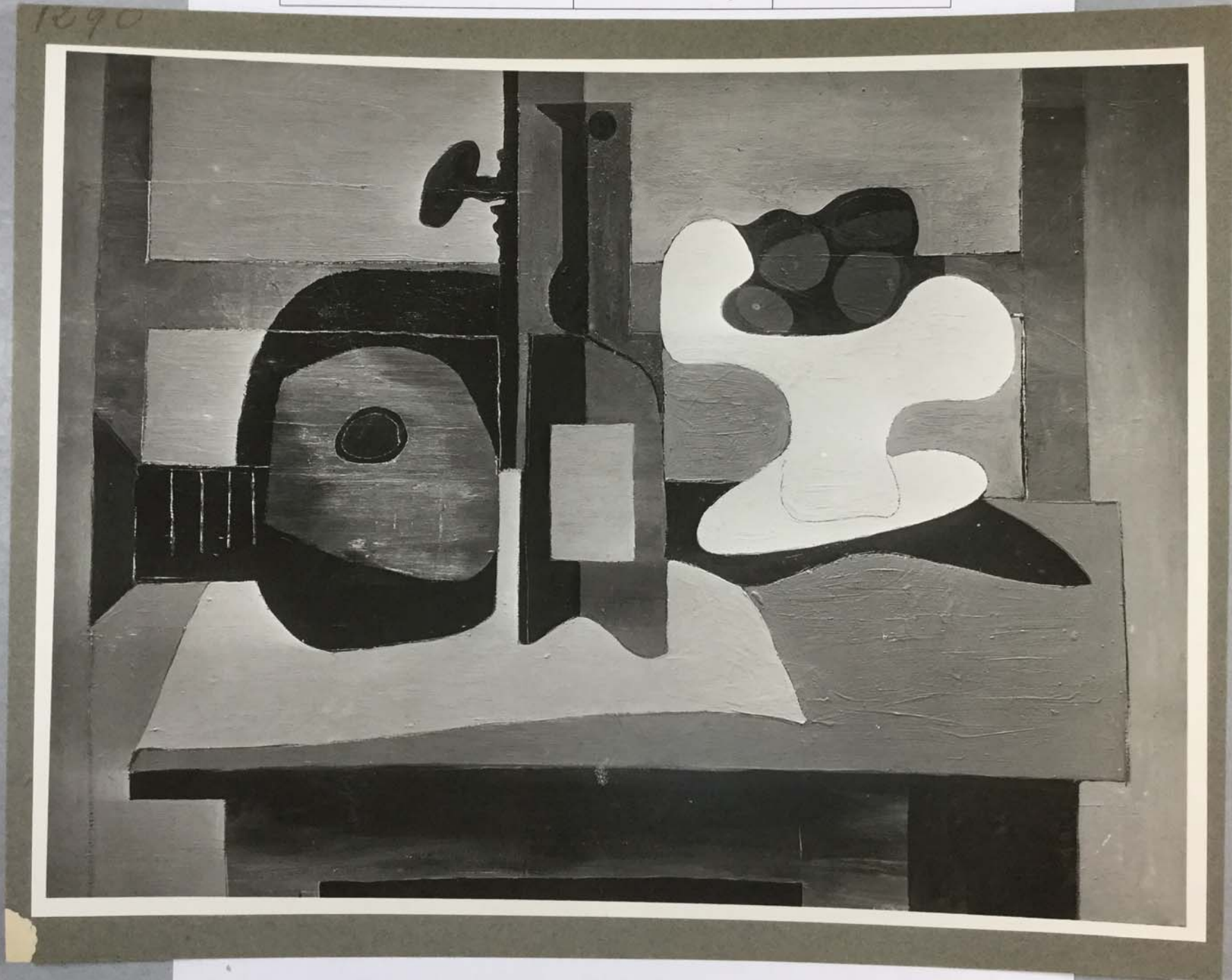


The Museum of Modern Art Archives, NY	Collection:	Series.Folder:
	Paul Rosenberg	III.A.1.103.a

<u>PICASSO</u> - 1924	PH.:-
GUIARE, VERRE ET BOUTEILLE	CI.:-
97 x 130 - 38½" x 51½"	SL:-
	P. :- 1102
	N. :-
	SE:-

FOR STUDY PURPOSES ONLY. NOT FOR REPRODUCTION.

The Museum of Modern Art Archives, NY	Collection:	Series.Folder:
	Paul Rosenberg	III.A.1.103.a



FOR STUDY PURPOSES ONLY. NOT FOR REPRODUCTION.

The Museum of Modern Art Archives, NY	Collection:	Series.Folder:
	Paul Rosenberg	III.A.1.103.a

<p>PICASSO 1924 GUITARE, BOUTEILLE ET COMPOTIER SUR UNE TABLE - 97 x 130 - 38<math>\frac{1}{2}</math>" x 51<math>\frac{1}{2}</math>"</p>	<p>PH. :- CI. :- SL :- P. :- 1290 N. :- SE :-</p>
------------------------------------------------------------------------------------------------------------------------------------------------------	-----------------------------------------------------------------------

FOR STUDY PURPOSES ONLY. NOT FOR REPRODUCTION.

The Museum of Modern Art Archives, NY	Collection:	Series.Folder:
	Paul Rosenberg	III.A.1.103.a



FOR STUDY PURPOSES ONLY. NOT FOR REPRODUCTION.

The Museum of Modern Art Archives, NY	Collection:	Series.Folder:
	Paul Rosenberg	III.A.1.103.a

<p>PICASSO - 1932 NU ALLONGÉ AU BUSTE ET À LA PLANTE DÉCORATIVE. 162 x 130 - 64" x 51½" MR + MRS. SIDNEY BRODY, LOS ANGELES</p>	<p>PH.:- CI.:- SL:- P. - 3681 N. - 632 SE:-</p>
-------------------------------------------------------------------------------------------------------------------------------------------------	---------------------------------------------------------------------

S.O.



FOR STUDY PURPOSES ONLY. NOT FOR REPRODUCTION.

The Museum of Modern Art Archives, NY

Collection:  
Paul Rosenberg

Series.Folder:  
III.A.1.103.a



The Museum of Modern Art Archives, NY	Collection:	Series.Folder:
	Paul Rosenberg	III.A.1.103.a

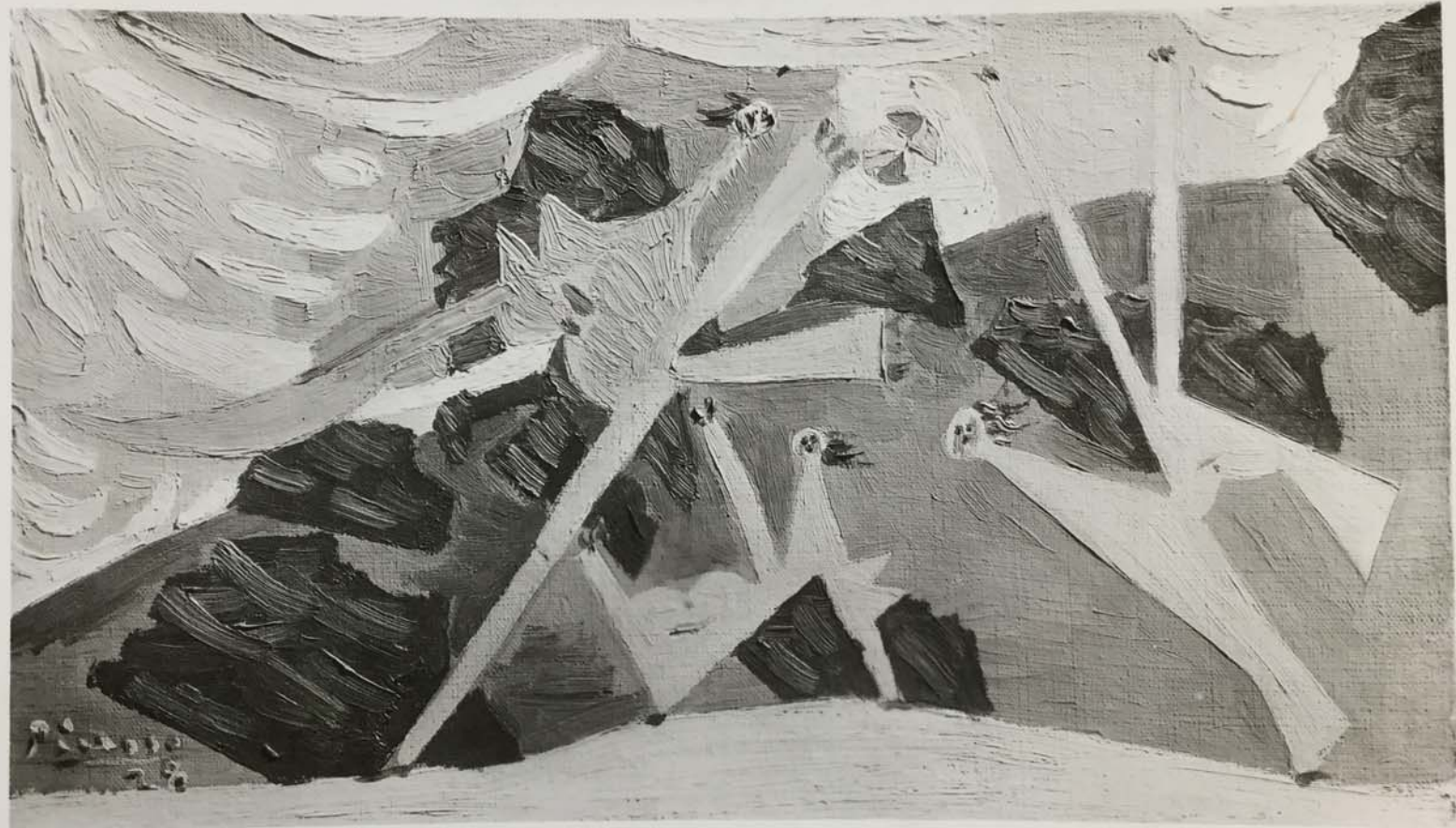
<u>PICASSO - 1934</u>	PH. :-
NU ALLONGÉ AU PARAVENT	CI. :-
	SL :-
33 x 55 - 13" x 21 $\frac{3}{4}$ "	P. :- 3421
	N. :-
	St :-

FOR STUDY PURPOSES ONLY. NOT FOR REPRODUCTION.

The Museum of Modern Art Archives, NY

Collection:  
Paul Rosenberg

Series.Folder:  
III.A.1.103.a



FOR STUDY PURPOSES ONLY. NOT FOR REPRODUCTION.

The Museum of Modern Art Archives, NY	Collection:	Series.Folder:
	Paul Rosenberg	III.A.1.103.a

<u>PICASSO</u> - 1928 JOUEUSES DE BALLON A BIVARD 19 x 32 - 7 $\frac{1}{2}$ " x 12 $\frac{3}{4}$ "	PH. :- CI. :- SL :- P. :- 2340 N. :- St :- S. D.
----------------------------------------------------------------------------------------------------------	--------------------------------------------------------------------

FOR STUDY PURPOSES ONLY. NOT FOR REPRODUCTION.

The Museum of Modern Art Archives, NY	Collection:	Series.Folder:
	Paul Rosenberg	III.A.1.103.a

2332



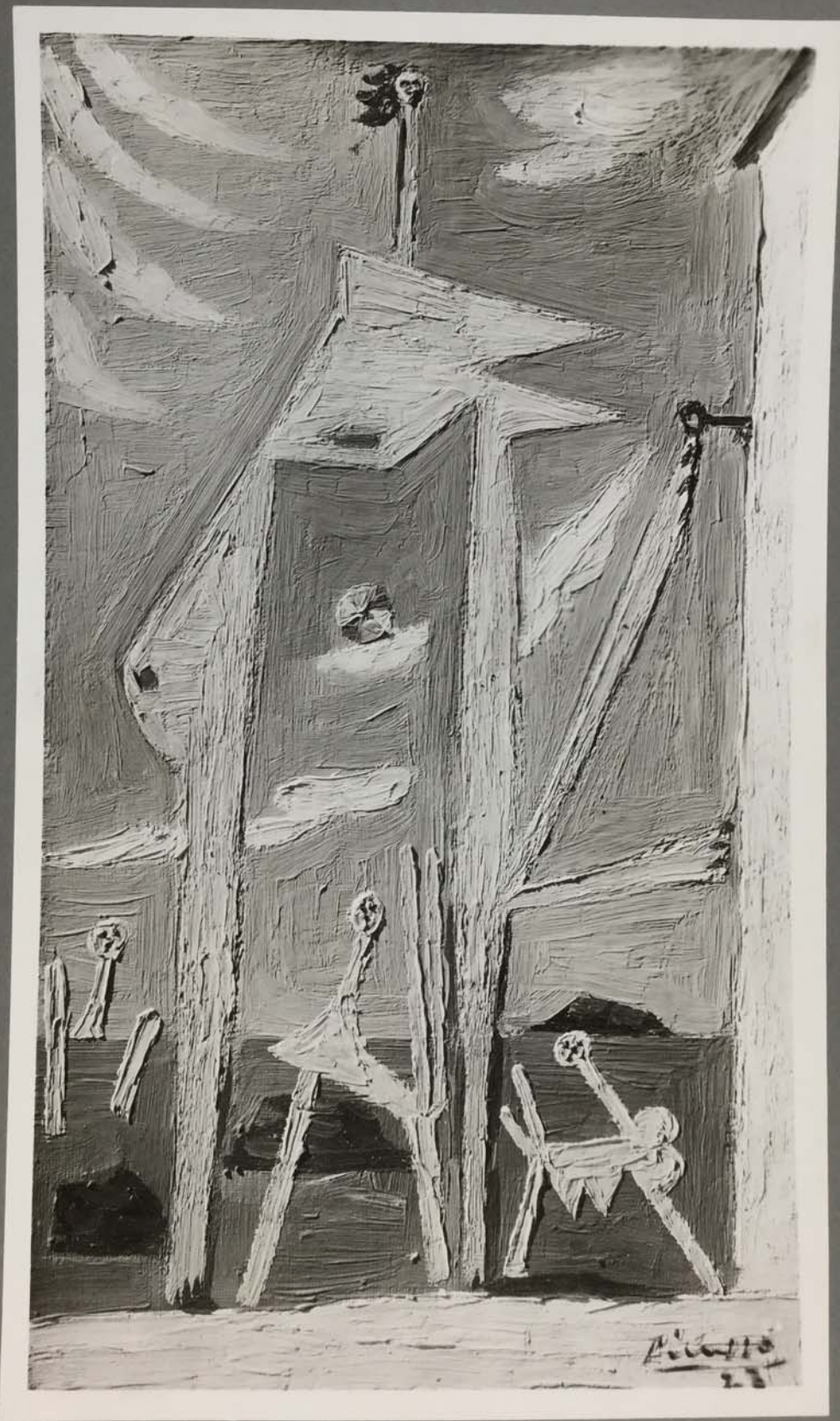
The Museum of Modern Art Archives, NY	Collection:	Series.Folder:
	Paul Rosenberg	III.A.1.103.a

<p>PICASSO. 1928 BAGNEUSES A DINARD 16 x 22 - 6 <math>\frac{1}{4}</math>" x 8 <math>\frac{3}{4}</math>"</p>	<p>PH:- CL:- SL:- P. 1-2332 N. :- St:-</p> <p>S. D.</p>
---------------------------------------------------------------------------------------------------------------------	-----------------------------------------------------------------------------

FOR STUDY PURPOSES ONLY. NOT FOR REPRODUCTION.

The Museum of Modern Art Archives, NY	Collection:	Series.Folder:
	Paul Rosenberg	III.A.1.103.a

2841



Picasso  
28

FOR STUDY PURPOSES ONLY. NOT FOR REPRODUCTION.

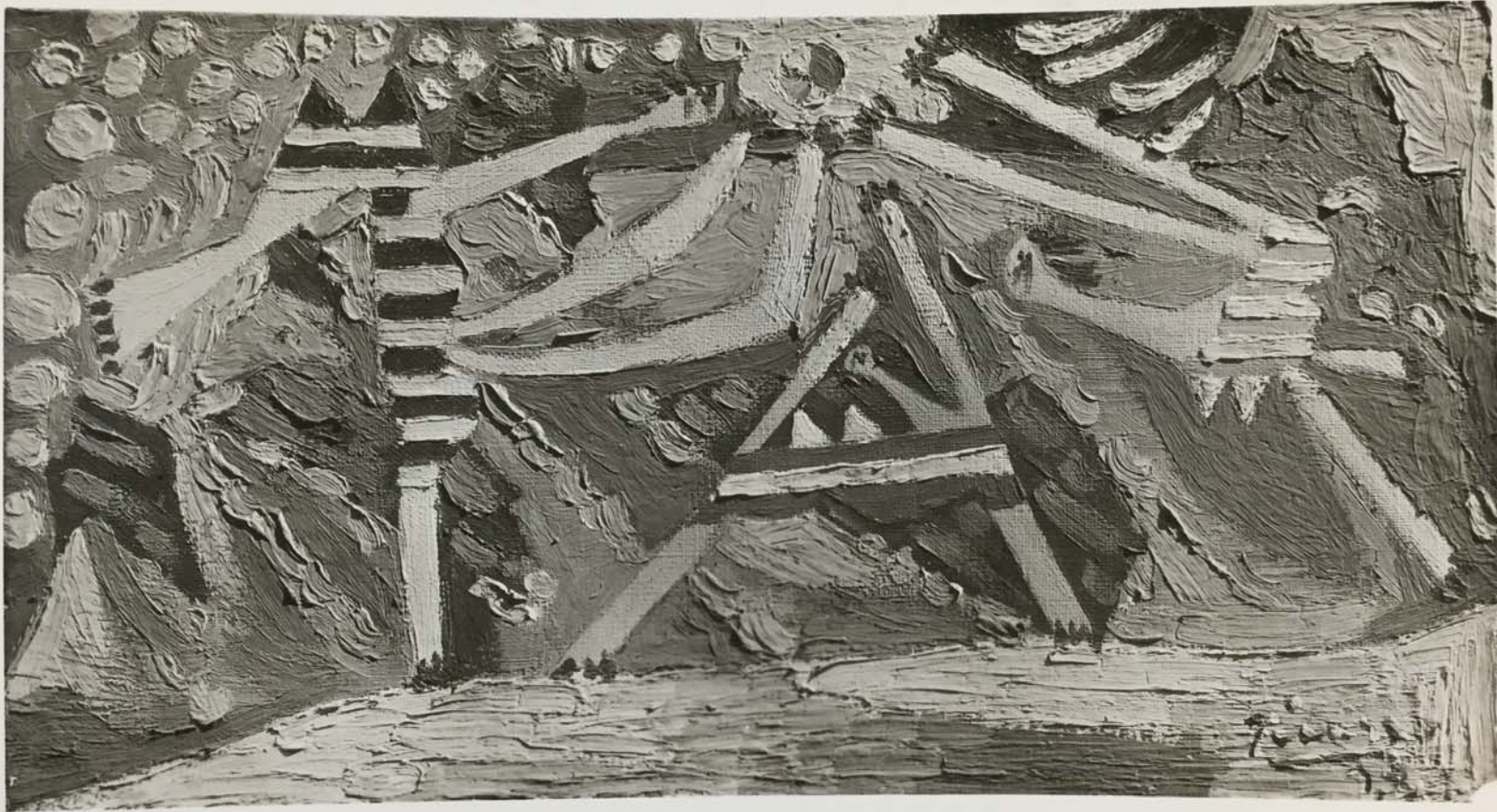
The Museum of Modern Art Archives, NY	Collection:	Series.Folder:
	Paul Rosenberg	III.A.1.103.a

<u>PICASSO</u> 1928 BAIGNEUSES A DINARD  32 x 19 - 12 $\frac{3}{4}$ " x 7 $\frac{1}{2}$ "	PH. :- CI. :- SL. :- P. :- 2341 N. :- ST. :-  S.O.
----------------------------------------------------------------------------------------------------	-------------------------------------------------------------------------

FOR STUDY PURPOSES ONLY. NOT FOR REPRODUCTION.

The Museum of Modern Art Archives, NY	Collection:	Series.Folder:
	Paul Rosenberg	III.A.1.103.a

2343



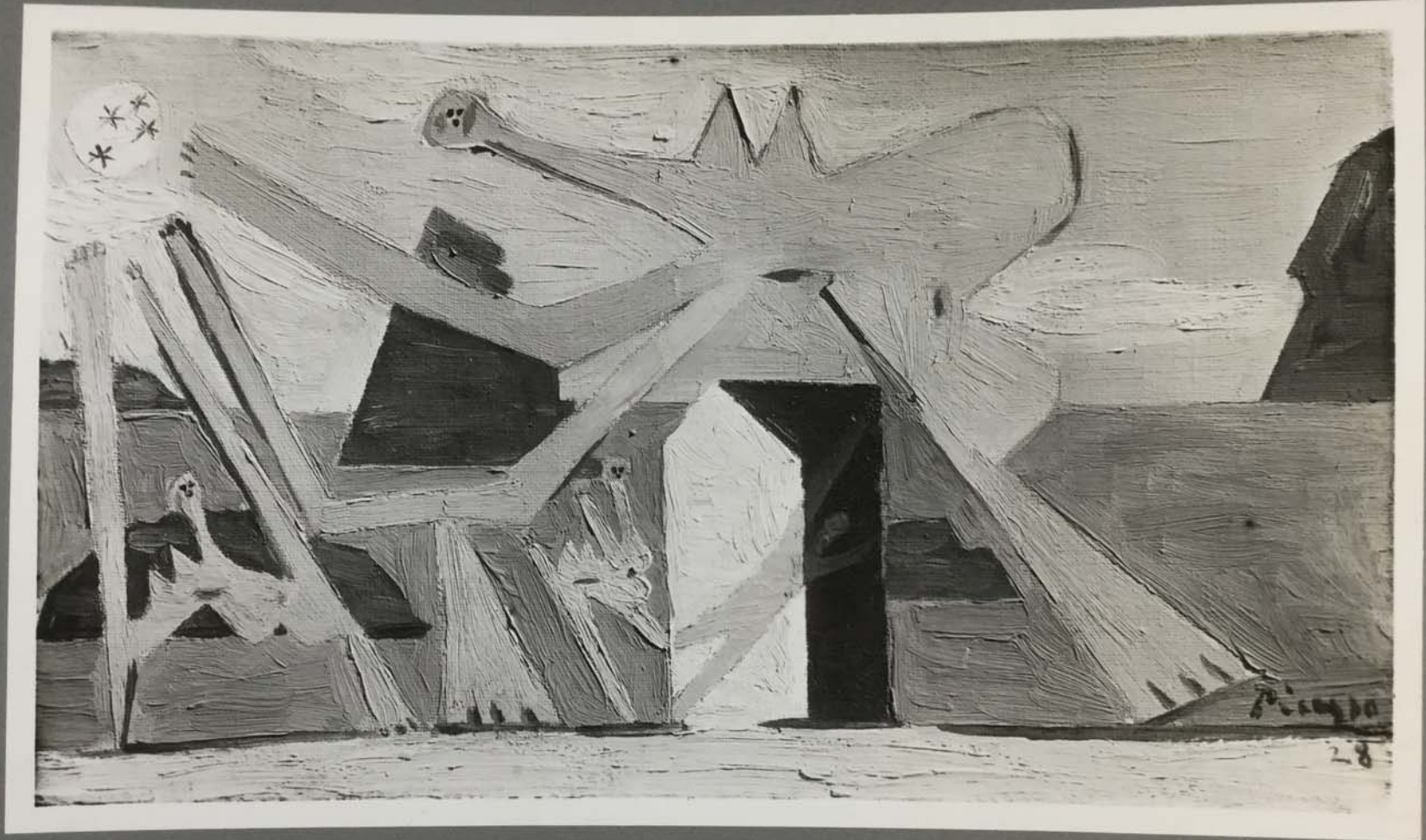
FOR STUDY PURPOSES ONLY. NOT FOR REPRODUCTION.

The Museum of Modern Art Archives, NY

Collection:  
Paul Rosenberg

Series.Folder:  
III.A.1.103.a

2342



FOR STUDY PURPOSES ONLY. NOT FOR REPRODUCTION.

The Museum of Modern Art Archives, NY	Collection:	Series.Folder:
	Paul Rosenberg	III.A.1.103.a

PICASSO - 1928

JOUEUSES DE BALLON à  
DINARD -

19 x 35 - 7 $\frac{1}{2}$ " x 14"

PH. :-

CI. :-

SL :-

P. :- 2342

N. :-

ST :-

S.D.

FOR STUDY PURPOSES ONLY. NOT FOR REPRODUCTION.

The Museum of Modern Art Archives, NY	Collection:	Series.Folder:
	Paul Rosenberg	III.A.1.103.a



FOR STUDY PURPOSES ONLY. NOT FOR REPRODUCTION.

The Museum of Modern Art Archives, NY	Collection:	Series.Folder:
	Paul Rosenberg	III.A.1.103.a

<p>PICASSO. 1932 FEMME DEVANT UN MIROIR 162 x 130 - 64" x 51½" MUSEUM OF MODERN ART, N.Y.</p>	<p>PH. :- Cl. :- SL :- 308 P. :- 3219 N. :- St. :-</p>
-----------------------------------------------------------------------------------------------------------	----------------------------------------------------------------------------

S.D.



FOR STUDY PURPOSES ONLY. NOT FOR REPRODUCTION.

The Museum of Modern Art Archives, NY	Collection:	Series.Folder:
	Paul Rosenberg	III.A.1.103.a

7300



(L) 24

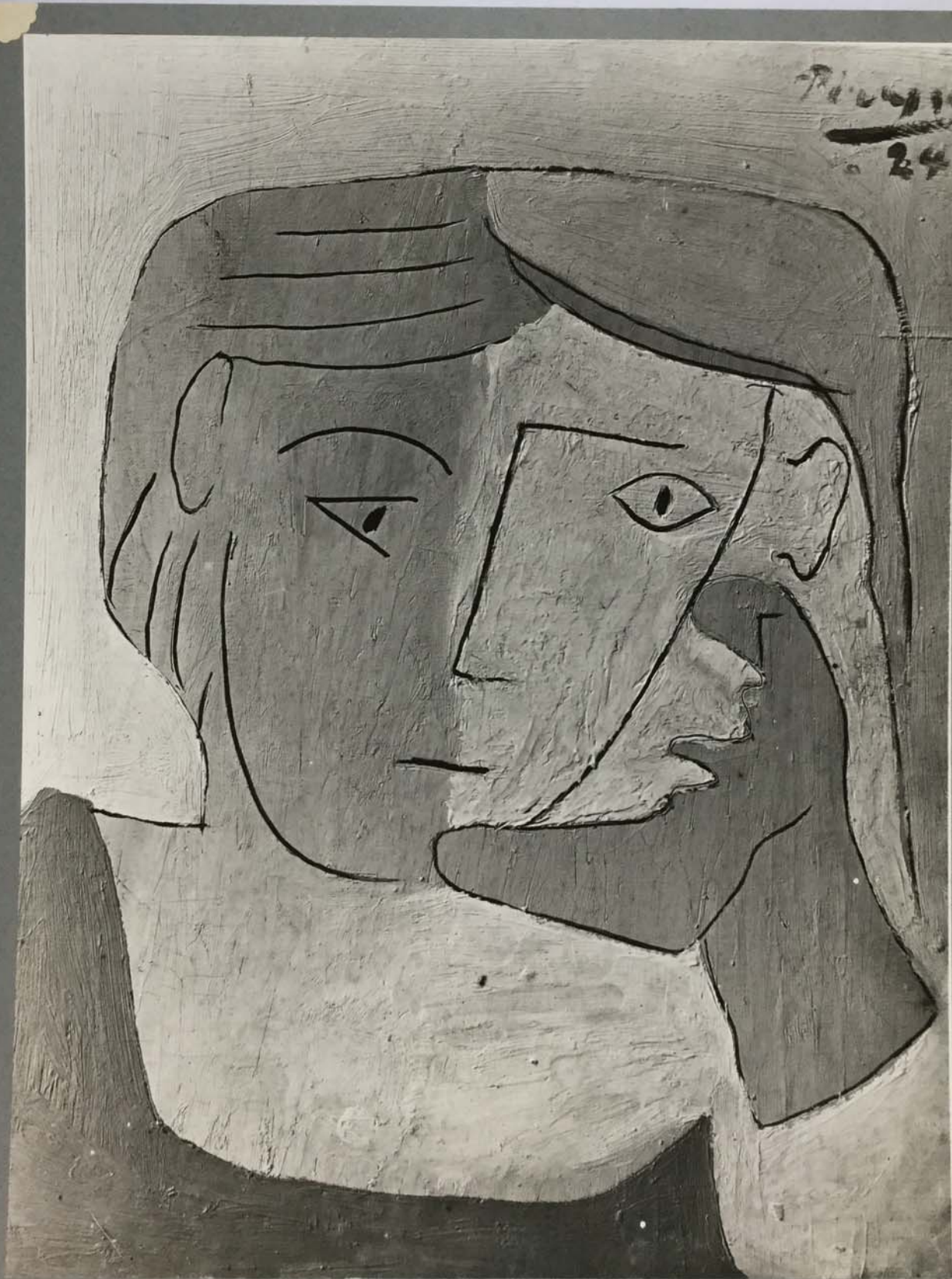
FOR STUDY PURPOSES ONLY. NOT FOR REPRODUCTION.

The Museum of Modern Art Archives, NY	Collection:	Series.Folder:
	Paul Rosenberg	III.A.1.103.a

<p>PICASSO - 1924 LE TAPIS ROUGE</p> <p>97 x 130 - 38½" x 51½"</p> <p>P.R.</p>	<p>PH. :- CI. :- SL :- 271 P. :- 1300 N. :- 172 SE :-</p> <p>S.D.</p>
------------------------------------------------------------------------------------	-------------------------------------------------------------------------------------------

FOR STUDY PURPOSES ONLY. NOT FOR REPRODUCTION.

The Museum of Modern Art Archives, NY	Collection:	Series.Folder:
	Paul Rosenberg	III.A.1.103.a



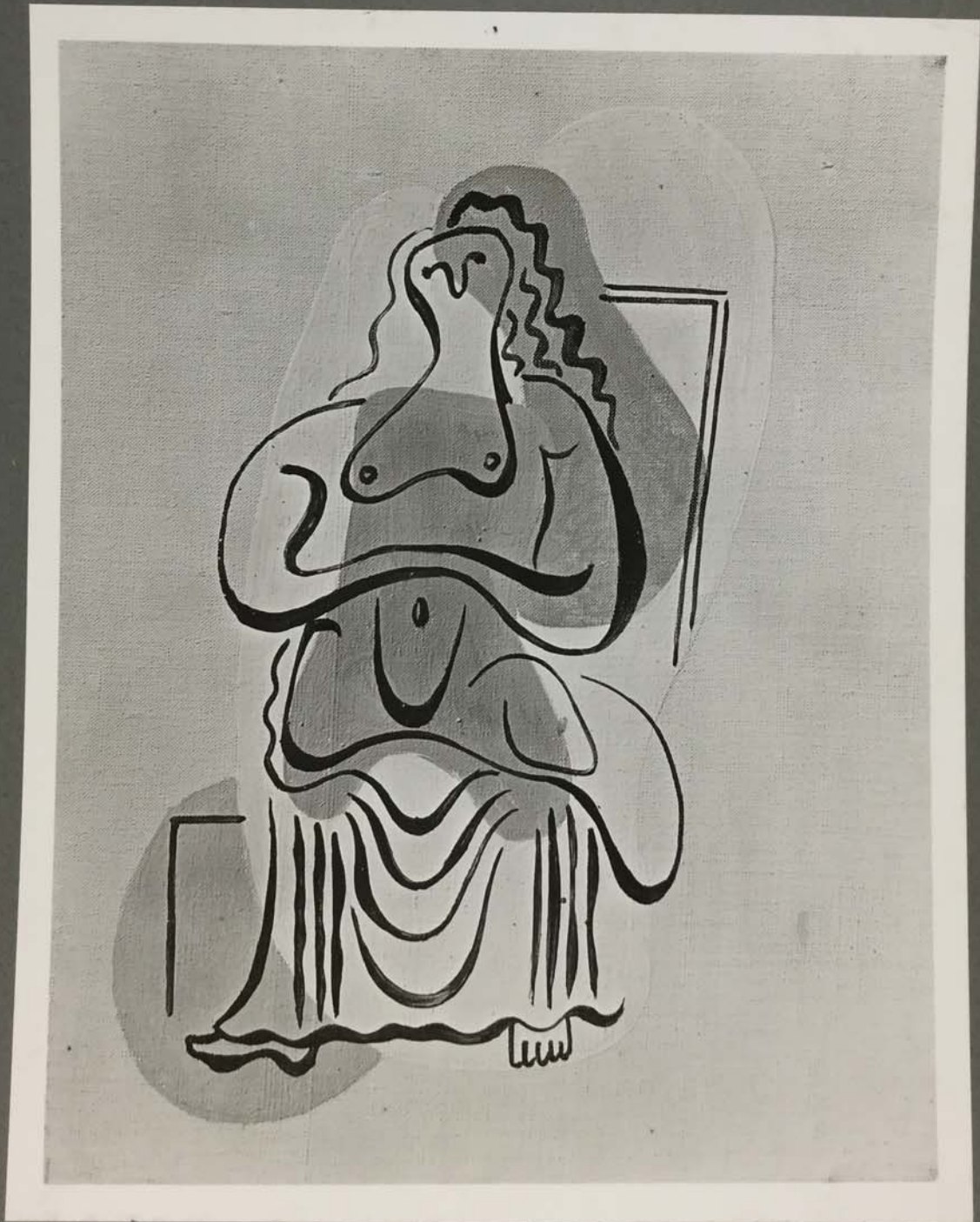
FOR STUDY PURPOSES ONLY. NOT FOR REPRODUCTION.

The Museum of Modern Art Archives, NY	Collection:	Series.Folder:
	Paul Rosenberg	III.A.1.103.a

<p>PICASSO. 1924 TÊTE DE FEMME 33 x 27 - 13" x 10<math>\frac{3}{4}</math>" <i>W. Rosenberg</i></p>	<p>PH. :- CI. :- SL :- P. :- 1135 M. :- St. :-</p> <p>S. 0</p>
----------------------------------------------------------------------------------------------------------------	------------------------------------------------------------------------------------

FOR STUDY PURPOSES ONLY. NOT FOR REPRODUCTION.

The Museum of Modern Art Archives, NY	Collection:	Series.Folder:
	Paul Rosenberg	III.A.1.103.a



1804

FOR STUDY PURPOSES ONLY. NOT FOR REPRODUCTION.

The Museum of Modern Art Archives, NY	Collection:	Series.Folder:
	Paul Rosenberg	III.A.1.103.a

<u>PICASSO</u> 1924 FEMME ASSISE  24 x 20 - 9 $\frac{1}{2}$ " x 8"	PH. :- CI. :- SL. :- P. :- 1304 N. :- St. :-
-----------------------------------------------------------------------------	-------------------------------------------------------------

1304

FOR STUDY PURPOSES ONLY. NOT FOR REPRODUCTION.

The Museum of Modern Art Archives, NY	Collection:	Series.Folder:
	Paul Rosenberg	III.A.1.103.a



1028

FOR STUDY PURPOSES ONLY. NOT FOR REPRODUCTION.

The Museum of Modern Art Archives, NY	Collection:	Series, Folder:
	Paul Rosenberg	III.A.1.103.a

<p>PICASSO - 1925 LES TROIS DANSEURS 215 x 140 - 85<math>\frac{1}{4}</math>" x 55<math>\frac{1}{2}</math>" PICASSO</p>	<p>PH. :- CI. :- SL. :- P. :- 1323 N. :- ST. :-</p>
------------------------------------------------------------------------------------------------------------------------------------	-------------------------------------------------------------------------

FOR STUDY PURPOSES ONLY. NOT FOR REPRODUCTION.

The Museum of Modern Art Archives, NY	Collection:	Series.Folder:
	Paul Rosenberg	III.A.1.103.a



1898

FOR STUDY PURPOSES ONLY. NOT FOR REPRODUCTION.

The Museum of Modern Art Archives, NY	Collection:	Series.Folder:
	Paul Rosenberg	III.A.1.103.a

<u>PICASSO</u> 1925 NATURE MORTE AU BRAS DE MARBRE . 97 x 130 - 38½" x 51½" LIEPKE, WIESBADEN.	PH. :- CI. :- SL :- P. :- 1299 N. :- St :-
------------------------------------------------------------------------------------------------------------	-----------------------------------------------------------

1299