

CONDITIONS OF USE FOR THIS PDF

The images contained within this PDF may be used for private study, scholarship, and research only. They may not be published in print, posted on the internet, or exhibited. They may not be donated, sold, or otherwise transferred to another individual or repository without the written permission of The Museum of Modern Art Archives.

When publication is intended, publication-quality images must be obtained from SCALA Group, the Museum's agent for licensing and distribution of images to outside publishers and researchers.

If you wish to quote any of this material in a publication, an application for permission to publish must be submitted to the MoMA Archives. This stipulation also applies to dissertations and theses. All references to materials should cite the archival collection and folder, and acknowledge "The Museum of Modern Art Archives, New York."

Whether publishing an image or quoting text, you are responsible for obtaining any consents or permissions which may be necessary in connection with any use of the archival materials, including, without limitation, any necessary authorizations from the copyright holder thereof or from any individual depicted therein.

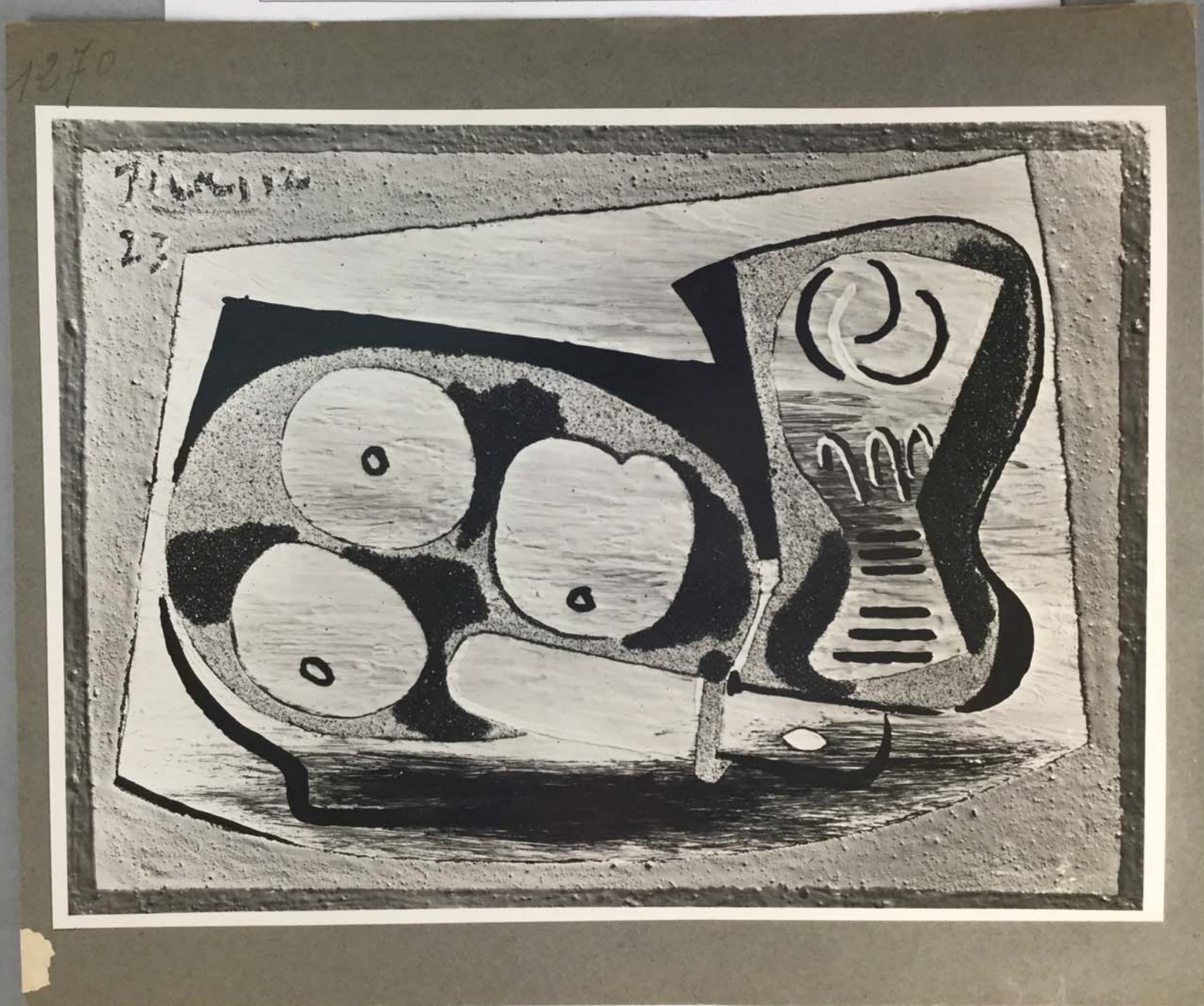
In requesting and accepting this reproduction, you are agreeing to indemnify and hold harmless The Museum of Modern Art, its agents and employees against all claims, demands, costs and expenses incurred by copyright infringement or any other legal or regulatory cause of action arising from the use of this material.

NOTICE: WARNING CONCERNING COPYRIGHT RESTRICTIONS

The copyright law of the United States (Title 17, United States Code) governs the making of photocopies or other reproductions of copyrighted material. Under certain conditions specified in the law, libraries and archives are authorized to furnish a photocopy or other reproduction. One of these specified conditions is that the photocopy or reproduction is not to be "used for any purpose other than private study, scholarship, or research." If a user makes a request for, or later uses, a photocopy or reproduction for purposes in excess of "fair use," that user may be liable for copyright infringement.

FOR STUDY PURPOSES ONLY. NOT FOR REPRODUCTION.

The Museum of Modern Art Archives, NY	Collection:	Series.Folder:
	Paul Rosenberg	III.A.1.101.c



The Museum of Modern Art Archives, NY	Collection:	Series.Folder:
	Paul Rosenberg	III.A.1.101.c

PICASSO - 1923

ASSIETTE DE POMMES ET
VERRE.

24 x 33 - 9 1/2" x 13"

PH. :-

CI. :-

SL. :-

P. :- 1270

N. :-

St. :-

S.D.

FOR STUDY PURPOSES ONLY. NOT FOR REPRODUCTION.

The Museum of Modern Art Archives, NY	Collection:	Series.Folder:
	Paul Rosenberg	III.A.1.101.c

1869



FOR STUDY PURPOSES ONLY. NOT FOR REPRODUCTION.

The Museum of Modern Art Archives, NY	Collection:	Series.Folder:
	Paul Rosenberg	III.A.101.c

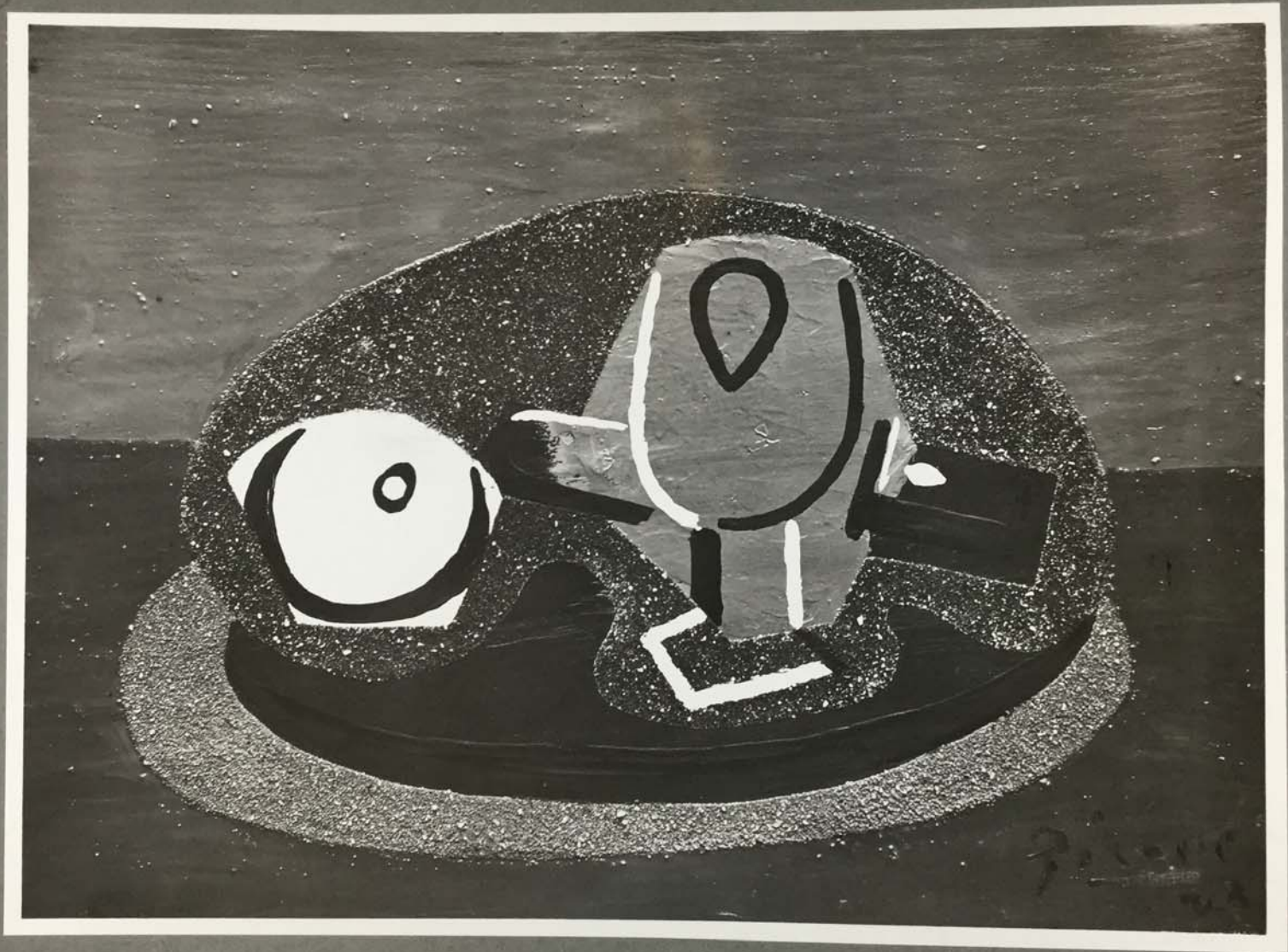
III.A.1.101.c

<u>PICASSO</u> - 1923 POMME, VERRE ET COUTEAU 24 x 33 - 9½" x 13" SAMPSON FIELD, N.Y.	PH. :- CI. :- SL :- 268 P. :- 1269 N. :- 604 St :- S.D.
--	---

FOR STUDY PURPOSES ONLY. NOT FOR REPRODUCTION.

The Museum of Modern Art Archives, NY	Collection:	Series.Folder:
	Paul Rosenberg	III.A.1.101.c

1264



FOR STUDY PURPOSES ONLY. NOT FOR REPRODUCTION.

The Museum of Modern Art Archives, NY	Collection:	Series.Folder:
	Paul Rosenberg	III.A.1.101.c

<p>PICASSO_1923 POMME, VERRE ET COUTEAU 24 x 33 - 9 1/2" x 13"</p>	<p>PH. :- Cl. :- SL :- P. :- 1267 N. :- St :-</p> <p>S. b.</p>
--	--

FOR STUDY PURPOSES ONLY. NOT FOR REPRODUCTION.

The Museum of Modern Art Archives, NY	Collection:	Series.Folder:
	Paul Rosenberg	III.A.1.101.c



FOR STUDY PURPOSES ONLY. NOT FOR REPRODUCTION.

The Museum of Modern Art Archives, NY	Collection:	Series.Folder:
	Paul Rosenberg	III.A.1.101.c

<p>PICASSO - 1923 POIRE ET VERRE 24 x 33 - 9 1/2" x 13"</p>	<p>PH. :- CI. :- SL. :- P. :- 1312 N. :- St. :-</p>
--	---

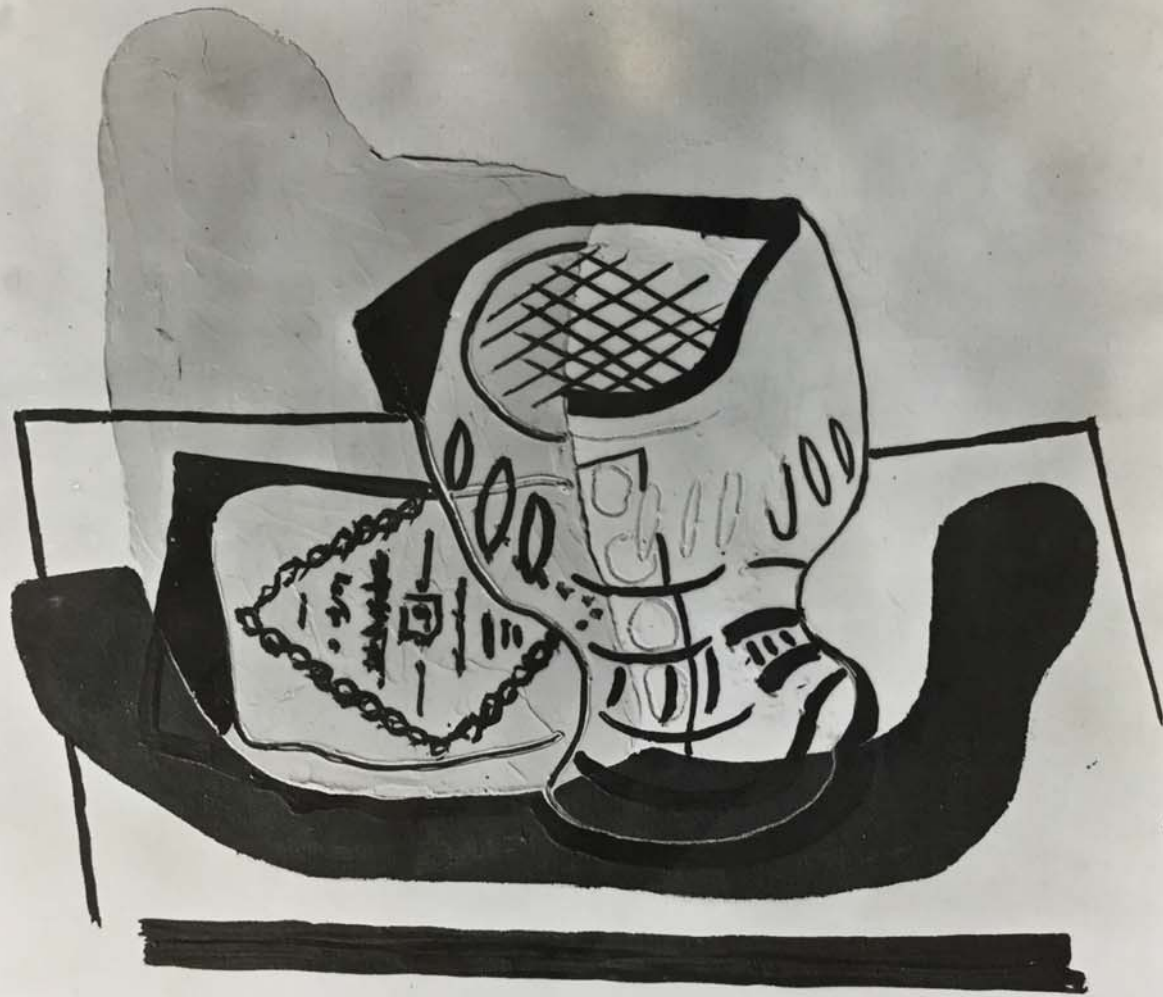
FOR STUDY PURPOSES ONLY. NOT FOR REPRODUCTION.

The Museum of Modern Art Archives, NY

Collection:
Paul Rosenberg

Series.Folder:
III.A.1.101.c

1322



The Museum of Modern Art Archives, NY	Collection:	Series.Folder:
	Paul Rosenberg	III.A.1.101.c

<p>PICASSO - 1923 PAQUET DE TABAC ET VERRE (PREMIER ÉTAT) - 22 x 27 - 8 $\frac{3}{4}$" x 10 $\frac{3}{4}$"</p>	<p>PH. :- Cl. :- SL :- P. :- 1322 N. :- St. :-</p>
--	--

FOR STUDY PURPOSES ONLY. NOT FOR REPRODUCTION.

The Museum of Modern Art Archives, NY	Collection:	Series.Folder:
	Paul Rosenberg	III.A.1.101.c

Blue Hat

1923



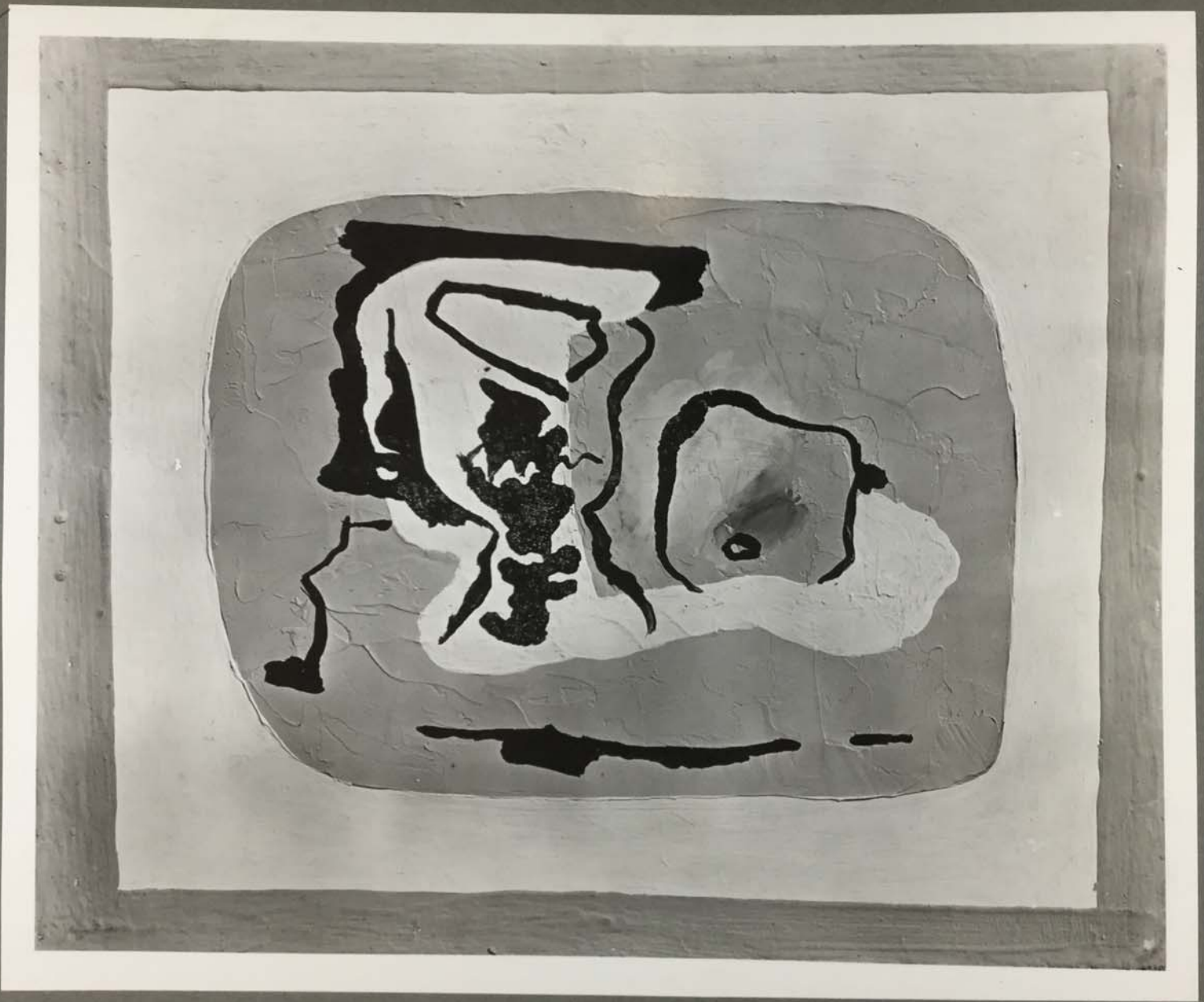
The Museum of Modern Art Archives, NY	Collection:	Series.Folder:
	Paul Rosenberg	III.A.1.101.c

<p>PICASSO - 1923 PAQUET DE TABAC ET VERRE (DÉFINITIF) - 22 x 27 - 8 $\frac{3}{4}$" x 10 $\frac{3}{4}$"</p>	<p>PH :- CI :- SL :- P :- 1322 N :- SE :-</p>
---	---

FOR STUDY PURPOSES ONLY. NOT FOR REPRODUCTION.

The Museum of Modern Art Archives, NY	Collection:	Series.Folder:
	Paul Rosenberg	III.A.1.101.c

303



FOR STUDY PURPOSES ONLY. NOT FOR REPRODUCTION.

The Museum of Modern Art Archives, NY	Collection:	Series.Folder:
	Paul Rosenberg	III.A.1.101.c

<u>PICASSO-1923</u> VERRE ET POMME 22 x 27 - $8\frac{3}{4}$ " x $10\frac{3}{4}$ "	PH. :- CI. :- SL :- P. :- 1303 N. :- ST. :-
---	--

FOR STUDY PURPOSES ONLY. NOT FOR REPRODUCTION.

The Museum of Modern Art Archives, NY	Collection:	Series.Folder:
	Paul Rosenberg	III.A.1.101.c

276



FOR STUDY PURPOSES ONLY. NOT FOR REPRODUCTION.

The Museum of Modern Art Archives, NY	Collection:	Series.Folder:
	Paul Rosenberg	III.A.1.101.c

<p>PICASSO - 1923 POMME ET VERRE 22 x 27 - 8 $\frac{3}{4}$" x 10 $\frac{3}{4}$" PARKE-BERNET - 1950</p>	<p>PH. :- CI. :- SL. :- P. :- 1276 N. :- St. :-</p> <p>S.D.</p>
---	---

FOR STUDY PURPOSES ONLY. NOT FOR REPRODUCTION.

The Museum of Modern Art Archives, NY	Collection:	Series.Folder:
	Paul Rosenberg	III.A.1.101.c



The Museum of Modern Art Archives, NY	Collection:	Series.Folder:
	Paul Rosenberg	III.A.1.101.c

PICASSO. 1923

POMME, VERRE ET COUTEAU

22 x 27 - $8\frac{3}{4}$ " x $10\frac{3}{4}$ "

PH. :-

CI. :-

SL :-

P. :- 1275

N. :-

ST :-

S.D.

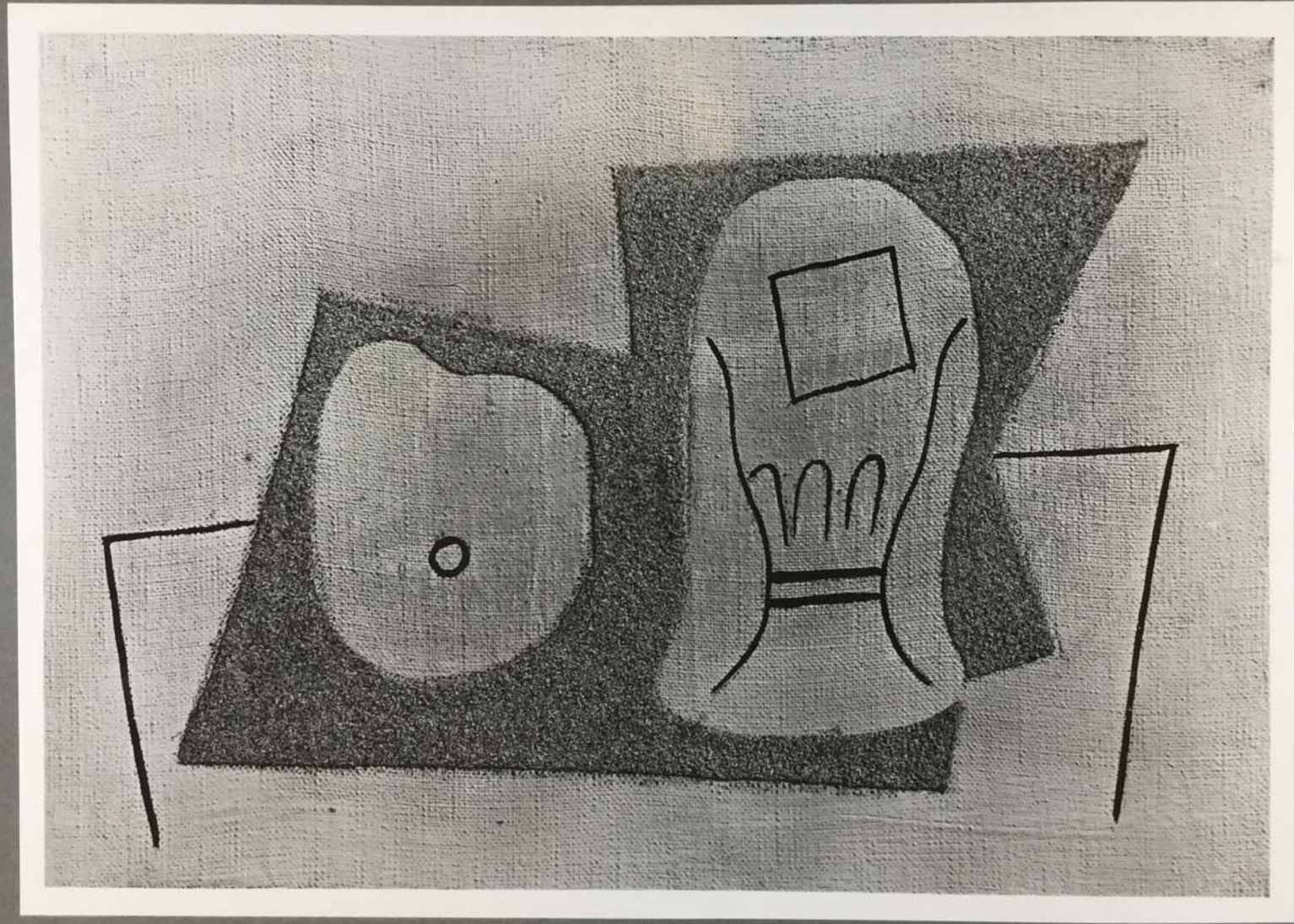
The Museum of Modern Art Archives, NY	Collection:	Series.Folder:
	Paul Rosenberg	III.A.1.101.c

<u>PICASSO, 1923</u> POMME, VERRE ET COUTEAU 22 x 27 - 8 $\frac{3}{4}$ " x 10 $\frac{3}{4}$ "	PH.:- CI.:- SL.:- R. :-1309 + 3470 N.:- ST.:- S.O.
---	--

FOR STUDY PURPOSES ONLY. NOT FOR REPRODUCTION.

The Museum of Modern Art Archives, NY	Collection:	Series.Folder:
	Paul Rosenberg	III.A.1.101.c

1307



FOR STUDY PURPOSES ONLY. NOT FOR REPRODUCTION.

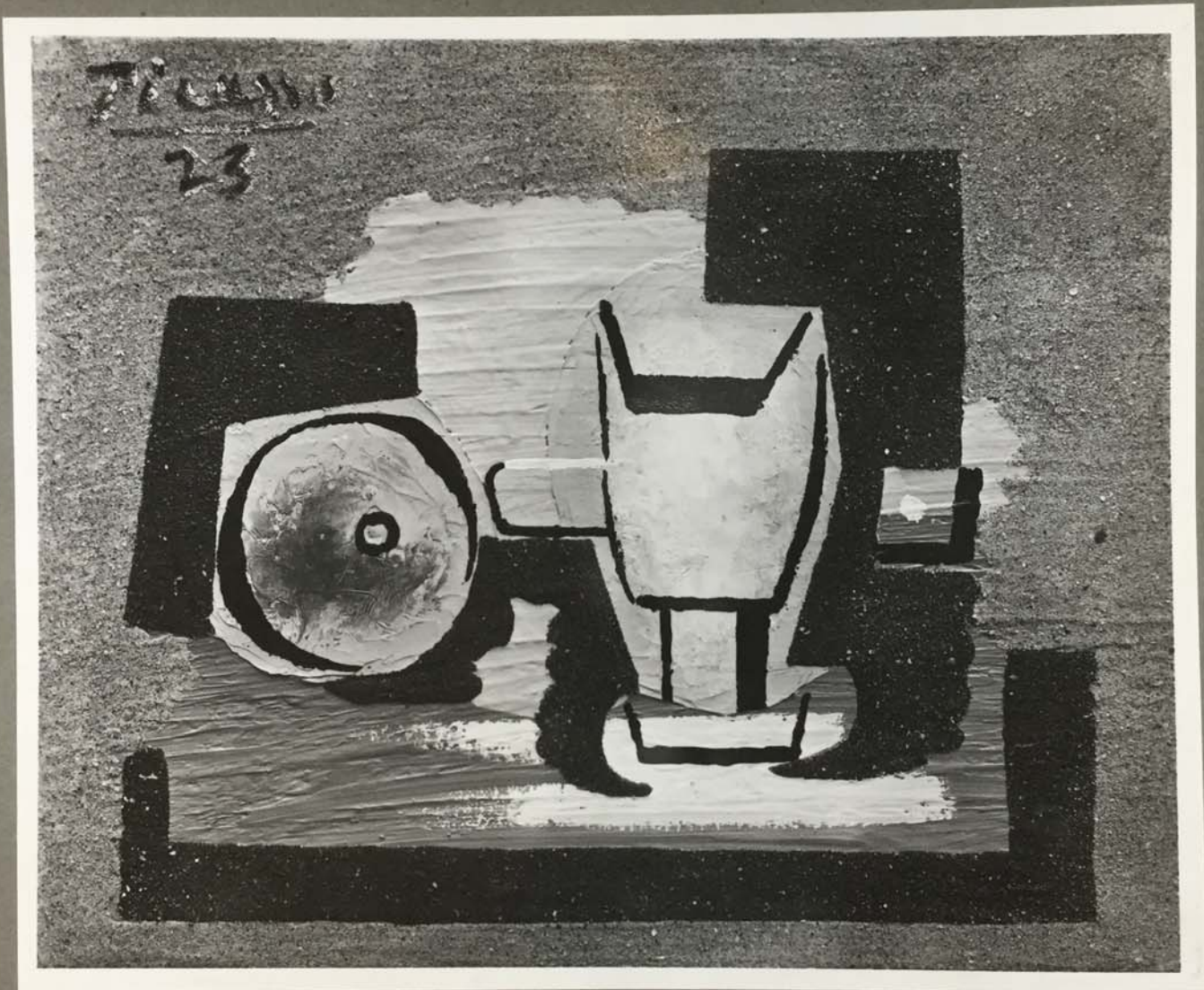
The Museum of Modern Art Archives, NY	Collection:	Series.Folder:
	Paul Rosenberg	III.A.1.101.c

<u>PICASSO</u> . 1923 POMME ET VERRE 19 x 27 - 7 $\frac{1}{2}$ " x 10 $\frac{3}{4}$ "	PH.: CI.: SL.: P.: 1307 N.: St.:
---	---

FOR STUDY PURPOSES ONLY. NOT FOR REPRODUCTION.

The Museum of Modern Art Archives, NY	Collection:	Series.Folder:
	Paul Rosenberg	III.A.1.101.c

1372



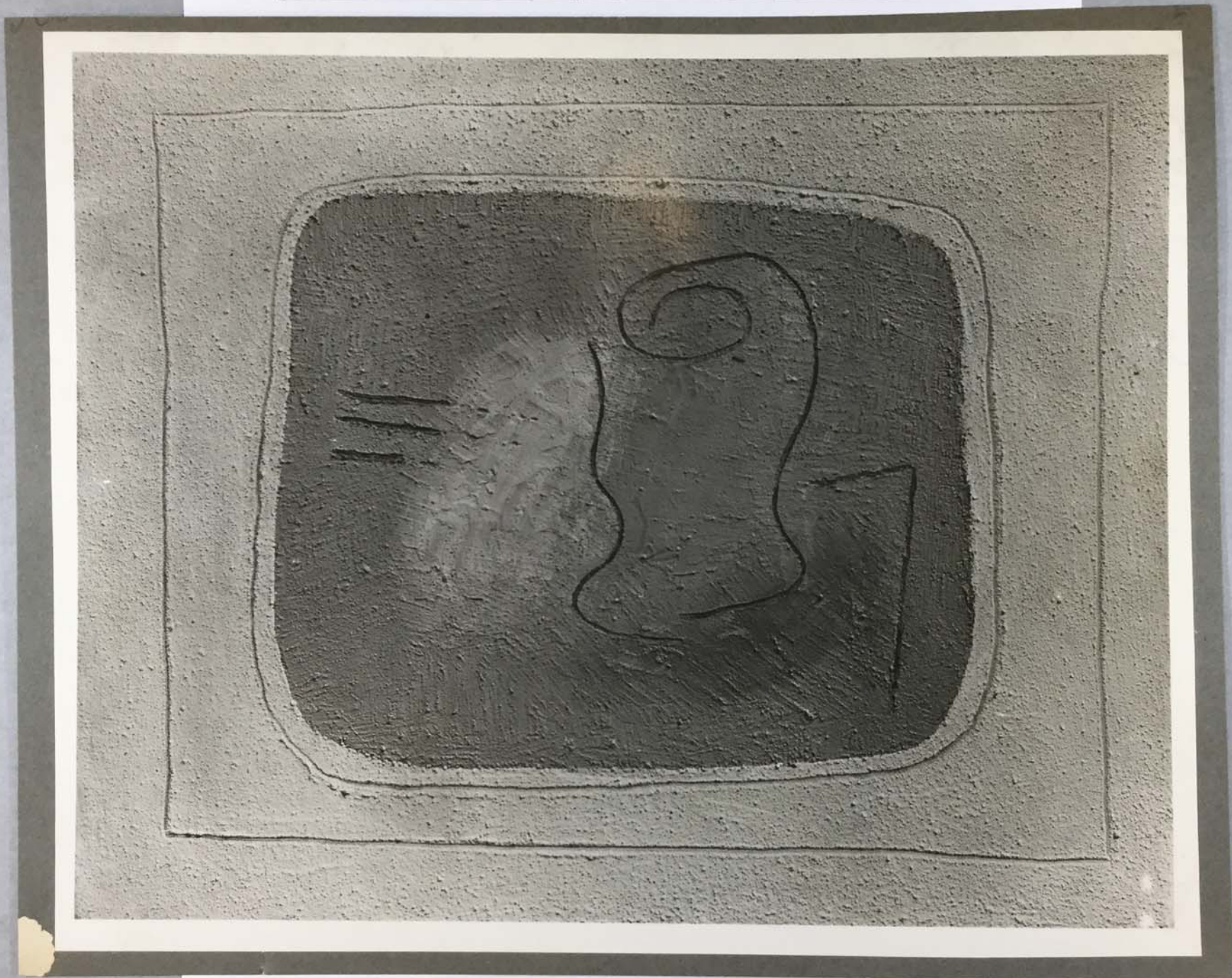
FOR STUDY PURPOSES ONLY. NOT FOR REPRODUCTION.

The Museum of Modern Art Archives, NY	Collection:	Series.Folder:
	Paul Rosenberg	III.A.1.101.c

<p>PICASSO. 1923 POMME. VERRE ET COUTEAU</p> <p>22 x 27 - 8 $\frac{3}{4}$" x 10 $\frac{3}{4}$"</p>	<p>PH. :- CI. :- SL. :- P. :- 1272 N. :- St. :-</p> <p>S.D.</p>
--	---

FOR STUDY PURPOSES ONLY. NOT FOR REPRODUCTION.

The Museum of Modern Art Archives, NY	Collection:	Series.Folder:
	Paul Rosenberg	III.A.1.101.c



FOR STUDY PURPOSES ONLY. NOT FOR REPRODUCTION.

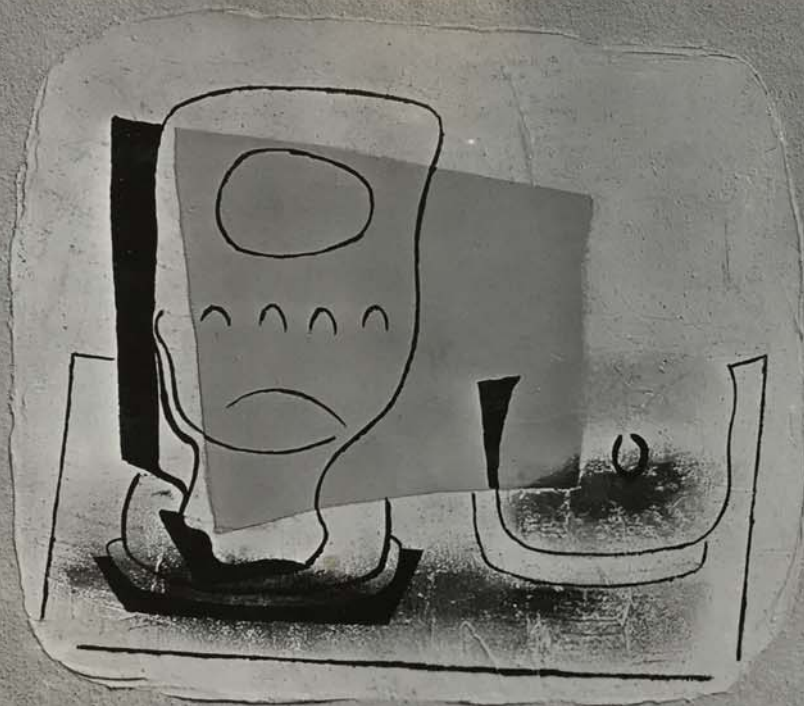
The Museum of Modern Art Archives, NY	Collection:	Series.Folder:
	Paul Rosenberg	III.A.1.101.c

<u>PICASSO</u> .1923 VERRE 33 x 42 - 13" x 16 $\frac{3}{4}$ "	PH. :- CI. :- SL. :- P. :- 1320 N. :- SE. :-
---	---

FOR STUDY PURPOSES ONLY. NOT FOR REPRODUCTION.

The Museum of Modern Art Archives, NY	Collection:	Series.Folder:
	Paul Rosenberg	III.A.1.101.c

1319



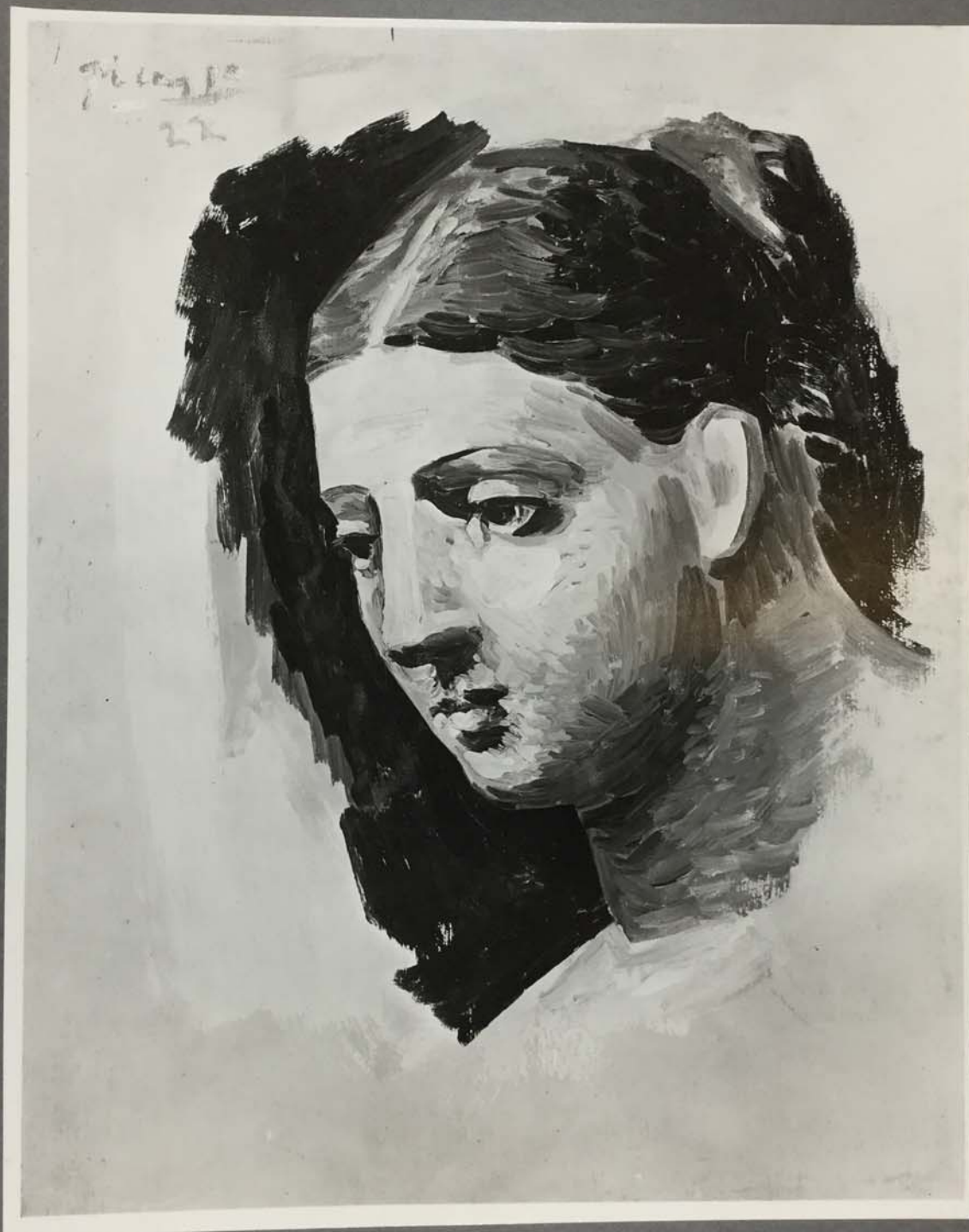
FOR STUDY PURPOSES ONLY. NOT FOR REPRODUCTION.

The Museum of Modern Art Archives, NY	Collection:	Series.Folder:
	Paul Rosenberg	III.A.1.101.c

<p>PICASSO 1923 VERRE ET POMME</p> <p>33 x 42 - 13" x 16 $\frac{3}{4}$"</p>	<p>PH. :- CI. :- SL. :- P. :- 1319 N. :- ST. :-</p>
--	---

FOR STUDY PURPOSES ONLY. NOT FOR REPRODUCTION.

The Museum of Modern Art Archives, NY	Collection:	Series.Folder:
	Paul Rosenberg	III.A.1.101.c



FOR STUDY PURPOSES ONLY. NOT FOR REPRODUCTION.

The Museum of Modern Art Archives, NY	Collection:	Series.Folder:
	Paul Rosenberg	III.A.1.101.c

<p>PICASSO 1922 TÊTE DE FEMME</p> <p>23 x 19 - 9$\frac{1}{2}$" x 7$\frac{1}{2}$"</p>	<p>PH. :- CI. :- SL. :- P. :- 1947 N. :- ST. :-</p> <p>S.D.</p>
--	---

FOR STUDY PURPOSES ONLY. NOT FOR REPRODUCTION.

The Museum of Modern Art Archives, NY	Collection:	Series.Folder:
	Paul Rosenberg	III.A.1.101.c



FOR STUDY PURPOSES ONLY. NOT FOR REPRODUCTION.

The Museum of Modern Art Archives, NY	Collection:	Series.Folder:
	Paul Rosenberg	III.A.1.101.c

<p>PICASSO - 1922 TÊTE CLASSIQUE</p> <p>55 x 46 - 21 $\frac{3}{4}$" x 18 $\frac{1}{4}$"</p> <p>RENÉ GAFFE, BRUXELLES -</p>	<p>PH. :- CI. :- SL :- P. :- 723 N. :- SE :-</p> <p>S.D.</p>
--	--

FOR STUDY PURPOSES ONLY. NOT FOR REPRODUCTION.

The Museum of Modern Art Archives, NY	Collection:	Series.Folder:
	Paul Rosenberg	III.A.1.101.c

1946



FOR STUDY PURPOSES ONLY. NOT FOR REPRODUCTION.

The Museum of Modern Art Archives, NY	Collection:	Series.Folder:
	Paul Rosenberg	III.A.1.101.c

PICASSO - 1929
LA COIFFURE.

18 x 16 - $7\frac{1}{4}$ " x $6\frac{1}{2}$ "

PH. :-
CI. :-
SL. :-
P. :- 1946
N. :-
ST. :-

S.D.
(1946)

FOR STUDY PURPOSES ONLY. NOT FOR REPRODUCTION.

The Museum of Modern Art Archives, NY	Collection:	Series.Folder:
	Paul Rosenberg	III.A.1.101.c

1597



FOR STUDY PURPOSES ONLY. NOT FOR REPRODUCTION.

The Museum of Modern Art Archives, NY	Collection:	Series.Folder:
	Paul Rosenberg	III.A.1.101.c

<p><u>PICASSO</u>. 1922</p> <p>QUATRE POISSONS SUR UN JOURNAL</p> <p>22 x 27 - $8\frac{3}{4}$" x $10\frac{3}{4}$"</p> <p>P.R.</p>	<p>PH.:-</p> <p>CI.:-</p> <p>SL:- 266</p> <p>P.:- 1597</p> <p>N.:-</p> <p>St:-</p> <p>S.D.</p>
---	--

FOR STUDY PURPOSES ONLY. NOT FOR REPRODUCTION.

The Museum of Modern Art Archives, NY	Collection:	Series.Folder:
	Paul Rosenberg	III.A.1.101.c



839

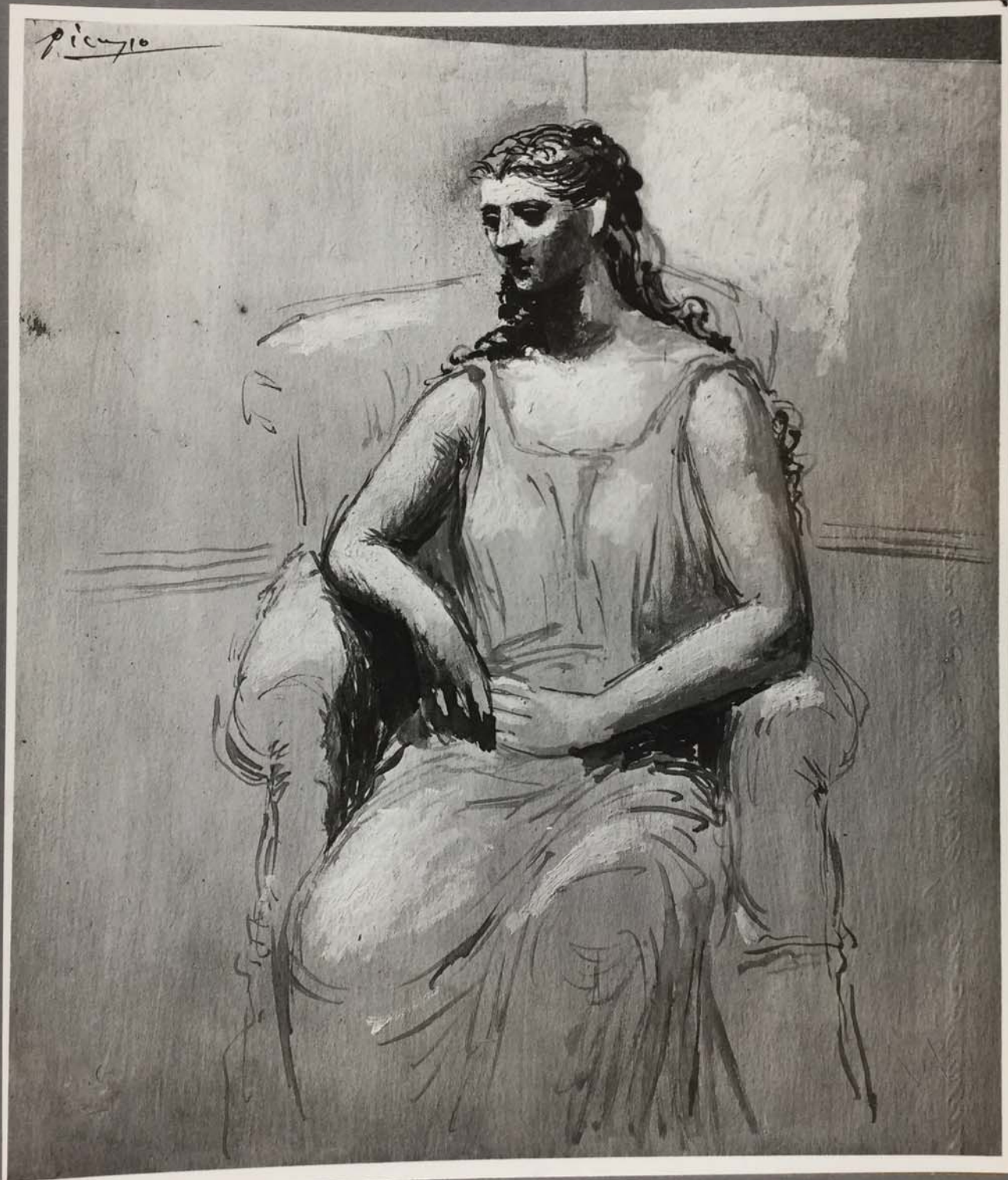
FOR STUDY PURPOSES ONLY. NOT FOR REPRODUCTION.

The Museum of Modern Art Archives, NY	Collection:	Series.Folder:
	Paul Rosenberg	III.A.1.101.c

<p>PICASSO - 1923 LES AMOUREUX</p> <p>130 x 97 - 51$\frac{1}{2}$" x 38$\frac{1}{2}$"</p> <p>CHESTER DALE</p>	<p>PH. :- CI. :- SL :- 448 P. :- 839 N. :- SE :-</p> <p>S.D.</p>
--	--

FOR STUDY PURPOSES ONLY. NOT FOR REPRODUCTION.

The Museum of Modern Art Archives, NY	Collection:	Series.Folder:
	Paul Rosenberg	III.A.1.101.c



FOR STUDY PURPOSES ONLY. NOT FOR REPRODUCTION.

The Museum of Modern Art Archives, NY	Collection:	Series.Folder:
	Paul Rosenberg	III.A.1.101.c

<p><u>PICASSO</u> - 1921</p> <p>FEMME ASSISE DANS UN FAUTEUIL (PEINTURE SUR PAPIER) -</p> <p>27 x 23 - 10$\frac{3}{4}$" x 9"</p> <p>P145-PL 360</p>	<p>PH.:-</p> <p>CI.:-</p> <p>SL.:-</p> <p>P. :-1825</p> <p>M.:-</p> <p>ST.:-</p>
--	--

FOR STUDY PURPOSES ONLY. NOT FOR REPRODUCTION.

The Museum of Modern Art Archives, NY	Collection:	Series.Folder:
	Paul Rosenberg	III.A.1.101.c



FOR STUDY PURPOSES ONLY. NOT FOR REPRODUCTION.

The Museum of Modern Art Archives, NY	Collection:	Series.Folder:
	Paul Rosenberg	III.A.1.101.c

<u>PICASSO</u> 1922 FEMME NUC ASSISE 19 x 14 - 7 $\frac{1}{2}$ " x 5 $\frac{1}{2}$ "	PH. :- CI. :- SL :- P. :- 1600 N. :- St. :-
--	--

FOR STUDY PURPOSES ONLY. NOT FOR REPRODUCTION.

The Museum of Modern Art Archives, NY	Collection:	Series.Folder:
	Paul Rosenberg	III.A.1.101.c



1944
744

FOR STUDY PURPOSES ONLY. NOT FOR REPRODUCTION.

The Museum of Modern Art Archives, NY	Collection:	Series.Folder:
	Paul Rosenberg	III.A.1.101.c

<p>PICASSO - 1921 TROIS FEMMES À LA FONTAINE 203 x 174 - 80 1/2" x 69" MUSEUM OF MODERN ART, N.Y.</p>	<p>PH.: CI.: SL.: P. :-1244 N. :-160 ST.: S.D.</p>
---	--

FOR STUDY PURPOSES ONLY. NOT FOR REPRODUCTION.

The Museum of Modern Art Archives, NY	Collection:	Series.Folder:
	Paul Rosenberg	III.A.1.101.c

1279



FOR STUDY PURPOSES ONLY. NOT FOR REPRODUCTION.

The Museum of Modern Art Archives, NY	Collection:	Series.Folder:
	Paul Rosenberg	III.A.1.101.c

<p><u>PICASSO</u> 1923 CHEVAL BLESSÉ</p> <p>19 x 24 - 7½" x 9½"</p>	<p>PH. :- CI. :- SL. :- P. :- 1279 N. :- ST. :-</p> <p>S.O.</p>
---	---

FOR STUDY PURPOSES ONLY. NOT FOR REPRODUCTION.

The Museum of Modern Art Archives, NY	Collection:	Series.Folder:
	Paul Rosenberg	III.A.1.101.c



FOR STUDY PURPOSES ONLY. NOT FOR REPRODUCTION.

The Museum of Modern Art Archives, NY	Collection:	Series.Folder:
	Paul Rosenberg	III.A.1.101.c

<p>PICASSO_1921 TROIS FEMMES À LA FONTAINE 25x24 - 9$\frac{3}{4}$" x 9$\frac{1}{2}$"</p>	<p>PH:- CI:- SL:- P:-1949 N:- ST:-</p>
--	--

S.O.

FOR STUDY PURPOSES ONLY. NOT FOR REPRODUCTION.

The Museum of Modern Art Archives, NY	Collection:	Series.Folder:
	Paul Rosenberg	III.A.1.101.c



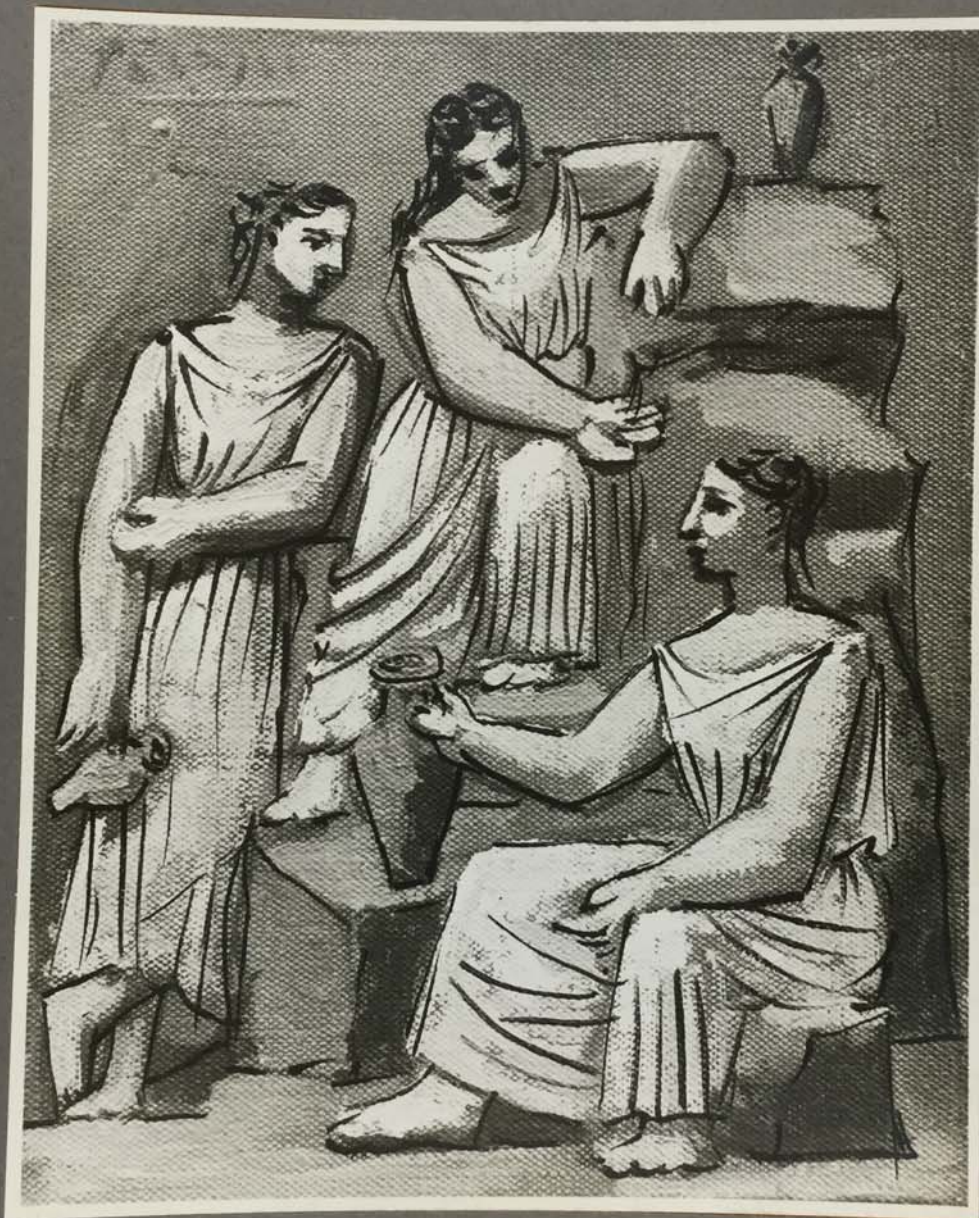
FOR STUDY PURPOSES ONLY. NOT FOR REPRODUCTION.

The Museum of Modern Art Archives, NY	Collection:	Series.Folder:
	Paul Rosenberg	III.A.1.101.c

<p><u>PICASSO</u>. 1921 TROIS FEMMES À LA FONTAINE 48 x 56 - 19" x 22½"</p>	<p>PH. :- CI. :- SL. :- P. :- 2015 N. :- St. :- S.D.</p>
--	---

FOR STUDY PURPOSES ONLY. NOT FOR REPRODUCTION.

The Museum of Modern Art Archives, NY	Collection:	Series.Folder:
	Paul Rosenberg	III.A.1.101.c



1584

FOR STUDY PURPOSES ONLY. NOT FOR REPRODUCTION.

The Museum of Modern Art Archives, NY	Collection:	Series.Folder:
	Paul Rosenberg	III.A.1.101.c

<p><u>PICASSO</u> - 1921 TROIS FEMMES À LA FONTAINE</p> <p>24 x 19 - 9 $\frac{1}{2}$" x 7 $\frac{1}{2}$"</p>	<p>PH.:- Cl. :- SL :- P. :- 1584 N. :- St.:-</p>
--	--

FOR STUDY PURPOSES ONLY. NOT FOR REPRODUCTION.

The Museum of Modern Art Archives, NY	Collection:	Series.Folder:
	Paul Rosenberg	III.A.1.101.c



FOR STUDY PURPOSES ONLY. NOT FOR REPRODUCTION.

The Museum of Modern Art Archives, NY	Collection:	Series.Folder:
	Paul Rosenberg	III.A.1.101.c

<u>PICASSO</u> . 1921 TROIS FEMMES À LA FONTAINE 19 x 24 - 7½" x 9½"	PH. :- CI. :- SL :- P. :- 1581 N. :- SE :-
--	---

FOR STUDY PURPOSES ONLY. NOT FOR REPRODUCTION.

The Museum of Modern Art Archives, NY	Collection:	Series.Folder:
	Paul Rosenberg	III.A.1.101.c

1582



FOR STUDY PURPOSES ONLY. NOT FOR REPRODUCTION.

The Museum of Modern Art Archives, NY	Collection:	Series.Folder:
	Paul Rosenberg	III.A.1.101.c

<u>PICASSO</u> - 1921	PH :-
TROIS FEMMES À LA FONTAINE	CI :-
	SL :-
19 x 24 - 7½" x 9½"	P. :- 1582
	N. :-
	St :-

FOR STUDY PURPOSES ONLY. NOT FOR REPRODUCTION.

The Museum of Modern Art Archives, NY	Collection:	Series.Folder:
	Paul Rosenberg	III.A.1.101.c



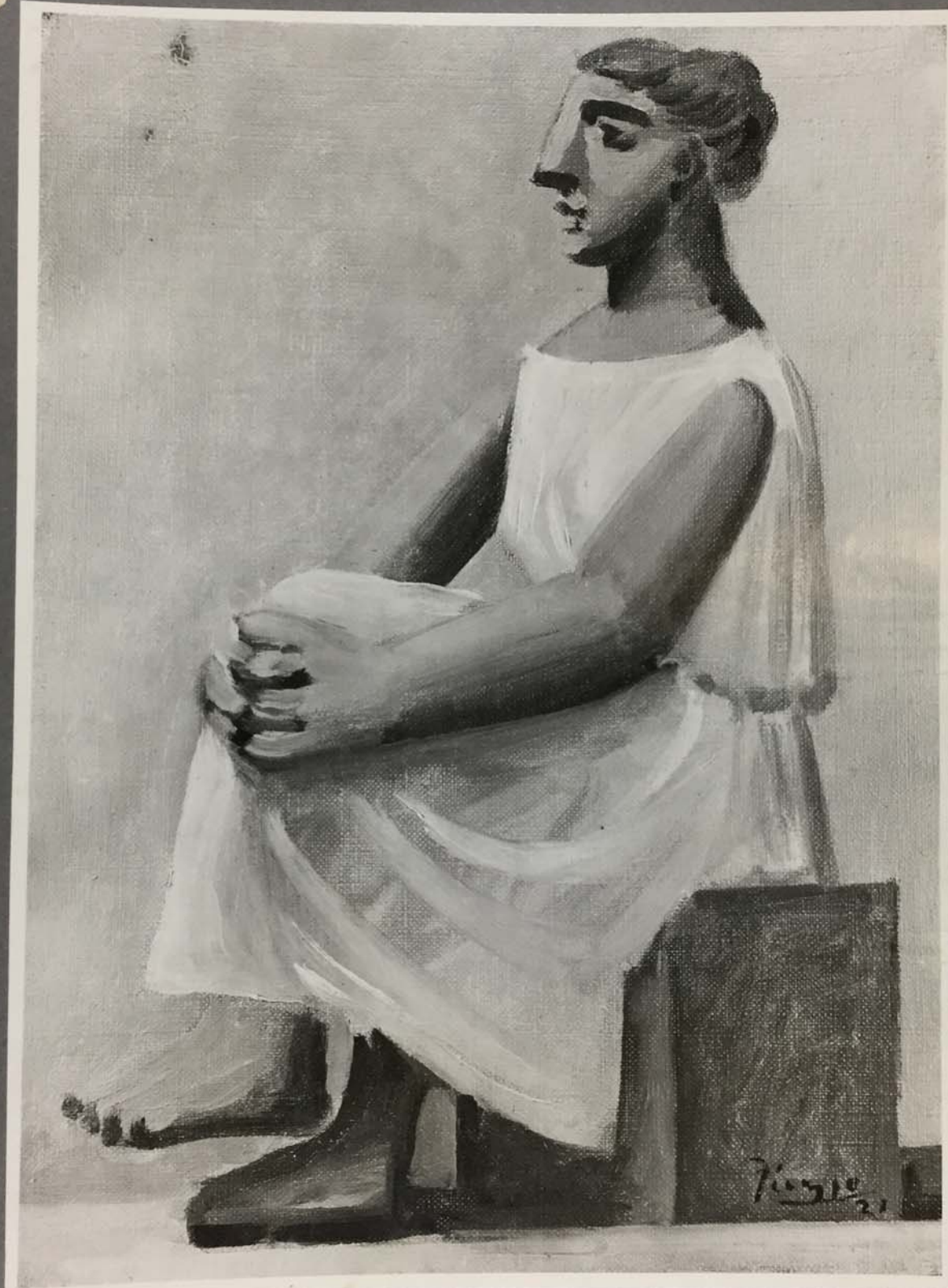
FOR STUDY PURPOSES ONLY. NOT FOR REPRODUCTION.

The Museum of Modern Art Archives, NY	Collection:	Series.Folder:
	Paul Rosenberg	III.A.1.101.c

<p>PICASSO. 1921 MATERNITÉ.</p> <p>27 x 22 - 10 $\frac{3}{4}$" x 8 $\frac{3}{4}$"</p>	<p>PH. :- CI. :- SL :- P. :- 1953 H. :- St :-</p> <p>S.A.</p>
---	---

FOR STUDY PURPOSES ONLY. NOT FOR REPRODUCTION.

The Museum of Modern Art Archives, NY	Collection:	Series.Folder:
	Paul Rosenberg	III.A.1.101.c



FOR STUDY PURPOSES ONLY. NOT FOR REPRODUCTION.

The Museum of Modern Art Archives, NY	Collection:	Series.Folder:
	Paul Rosenberg	III.A.1.101.c

<p>PICASSO - 1921 FEMME ASSISE, TENANT UN GENOU DANS SES MAINS.</p> <p>33 x 24 - 13" x 9 1/2"</p>	<p>PH. :- CI. :- SL :- P. :- 1954 N. :- St. :-</p> <p>S.O.</p>
---	--

FOR STUDY PURPOSES ONLY. NOT FOR REPRODUCTION.

The Museum of Modern Art Archives, NY

Collection:
Paul Rosenberg

Series.Folder:
III.A.1.101.c



FOR STUDY PURPOSES ONLY. NOT FOR REPRODUCTION.

The Museum of Modern Art Archives, NY	Collection:	Series.Folder:
	Paul Rosenberg	III.A.1.101.c

<p>PICASSO - 1923</p> <p>MME. PICASSO ASSISE DANS UN FAUTEUIL.</p> <p>130 x 97 - 51$\frac{1}{4}$" x 38$\frac{1}{2}$"</p> <p>PICASSO</p>	<p>PH. :-</p> <p>CI. :-</p> <p>SL. :-</p> <p>P. :- 934</p> <p>N. :-</p> <p>SE. :-</p>
---	---

FOR STUDY PURPOSES ONLY. NOT FOR REPRODUCTION.

The Museum of Modern Art Archives, NY	Collection:	Series.Folder:
	Paul Rosenberg	III.A.1.101.c



FOR STUDY PURPOSES ONLY. NOT FOR REPRODUCTION.

The Museum of Modern Art Archives, NY	Collection:	Series.Folder:
	Paul Rosenberg	III.A.1.101.c

<p>PICASSO - 1921 FEMME EN CHEMISE 116 x 73 - 46" x 29" G. F. REBER, LAUSANNE.</p>	<p>PH. :- CI. :- SL. :- P. :- 510 N. :- ST. :-</p>
--	--

FOR STUDY PURPOSES ONLY. NOT FOR REPRODUCTION.

The Museum of Modern Art Archives, NY	Collection:	Series.Folder:
	Paul Rosenberg	III.A.1.101.c



FOR STUDY PURPOSES ONLY. NOT FOR REPRODUCTION.

The Museum of Modern Art Archives, NY	Collection:	Series.Folder:
	Paul Rosenberg	III.A.1.101.c

<p><u>PICASSO</u> 1921 FEMME NUE ASSISE AUX DRAPERIES</p> <p>182 x 100 - 72" x 39 $\frac{3}{4}$"</p> <p>MME JEAN WALTER, PARIS</p>	<p>PH.:- CI.:- SL.:- P. :- 645 N. :- ST.:-</p> <p>S.D.</p>
---	--

FOR STUDY PURPOSES ONLY. NOT FOR REPRODUCTION.

The Museum of Modern Art Archives, NY	Collection:	Series.Folder:
	Paul Rosenberg	III.A.1.101.c



FOR STUDY PURPOSES ONLY. NOT FOR REPRODUCTION.

The Museum of Modern Art Archives, NY	Collection:	Series.Folder:
	Paul Rosenberg	III.A.1.101.c

<p>PICASSO - 1922 MÈRE ET ENFANT</p> <p>100 x 81 - 39$\frac{3}{4}$" x 32$\frac{1}{2}$"</p> <p>MRS AVERELL HARRIMAN, N.Y.</p>	<p>PH. :- CI. :- SL :- P. :- 843 N. :- 915 St :-</p> <p>S.D.</p>
--	--

FOR STUDY PURPOSES ONLY. NOT FOR REPRODUCTION.

The Museum of Modern Art Archives, NY	Collection:	Series.Folder:
	Paul Rosenberg	III.A.1.101.c



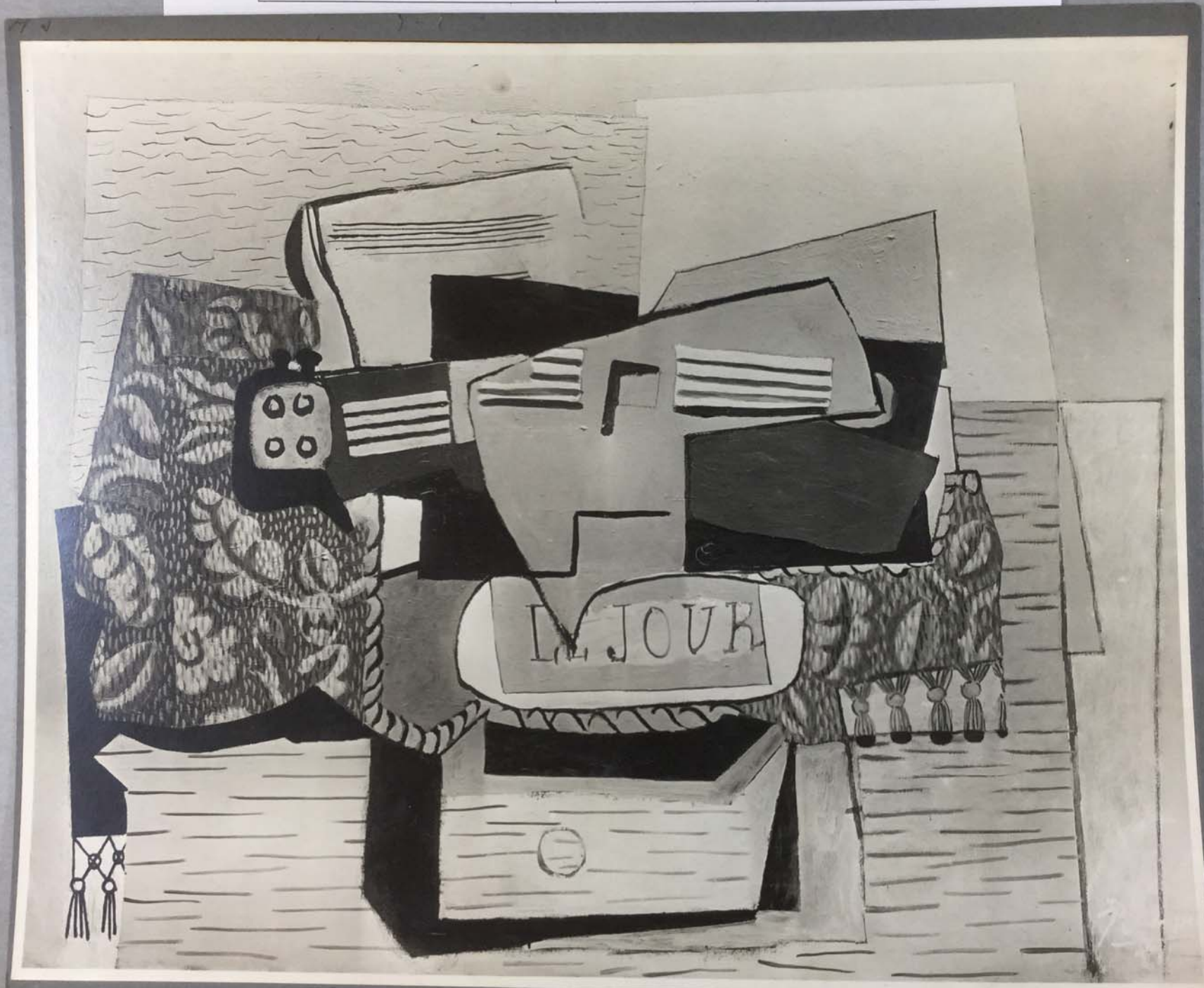
FOR STUDY PURPOSES ONLY. NOT FOR REPRODUCTION.

The Museum of Modern Art Archives, NY	Collection:	Series.Folder:
	Paul Rosenberg	III.A.1.101.c

<p>PICASSO - 1921 BAIGNEUSE ACCOUDÉE</p> <p>132 x 83 - 52 1/2" x 33"</p>	<p>PH. :- CI. :- SL :- P. :- 644 N. :- ST :-</p> <p>S.D.</p>
--	--

FOR STUDY PURPOSES ONLY. NOT FOR REPRODUCTION.

The Museum of Modern Art Archives, NY	Collection:	Series.Folder:
	Paul Rosenberg	III.A.1.101.c



FOR STUDY PURPOSES ONLY. NOT FOR REPRODUCTION.

The Museum of Modern Art Archives, NY	Collection:	Series.Folder:
	Paul Rosenberg	III.A.1.101.c

<p>PICASSO. 1921 "LE JOUR" 73 x 92 - 29" x 36 1/2" JOSEPH HAZEN, N.Y.</p>	<p>PH. :- CI. :- SL :- 683 P. :- 643 N. :- 1156 St :- S.D.</p>
---	---

FOR STUDY PURPOSES ONLY. NOT FOR REPRODUCTION.

The Museum of Modern Art Archives, NY	Collection:	Series.Folder:
	Paul Rosenberg	III.A.1.101.c

1586



3726

The Museum of Modern Art Archives, NY	Collection:	Series.Folder:
	Paul Rosenberg	III.A.1.101.c

<p>PICASSO_1922</p> <p>TASSE et CUILLÈRE</p> <p>22 x 27 - 8$\frac{3}{4}$" x 10$\frac{3}{4}$"</p>	<p>PH.:-</p> <p>CI.:-</p> <p>SL.:-</p> <p>P. :- 1586</p> <p>N.:-</p> <p>St.:-</p>
--	---

FOR STUDY PURPOSES ONLY. NOT FOR REPRODUCTION.

The Museum of Modern Art Archives, NY	Collection:	Series.Folder:
	Paul Rosenberg	III.A.1.101.c



FOR STUDY PURPOSES ONLY. NOT FOR REPRODUCTION.

The Museum of Modern Art Archives, NY	Collection:	Series.Folder:
	Paul Rosenberg	III.A.1.101.c

<p>PICASSO .1923 ARLEQUIN.</p> <p>130 x 97 . 51$\frac{1}{2}$" x 38$\frac{1}{2}$"</p> <p>STRECHLIN MUSEE DE BALE .</p>	<p>PH. :- CI. :- SL. :- P. :- 838 N. :- SE. :-</p> <p>S. D.</p>
---	---

FOR STUDY PURPOSES ONLY. NOT FOR REPRODUCTION.

The Museum of Modern Art Archives, NY	Collection:	Series.Folder:
	Paul Rosenberg	III.A.1.101.c



FOR STUDY PURPOSES ONLY. NOT FOR REPRODUCTION.

The Museum of Modern Art Archives, NY	Collection:	Series.Folder:
	Paul Rosenberg	III.A.1.101.c

<u>PICASSO</u> . 1923	PH. :-
ARLEQUIN -	CI. :-
	SL. :-
130 x 97 - 51½" x 38½"	P. :- 836
	N. :-
	SE. :-
GOURGAUD -	S.D. :-

FOR STUDY PURPOSES ONLY. NOT FOR REPRODUCTION.

The Museum of Modern Art Archives, NY	Collection:	Series.Folder:
	Paul Rosenberg	III.A.1.101.c



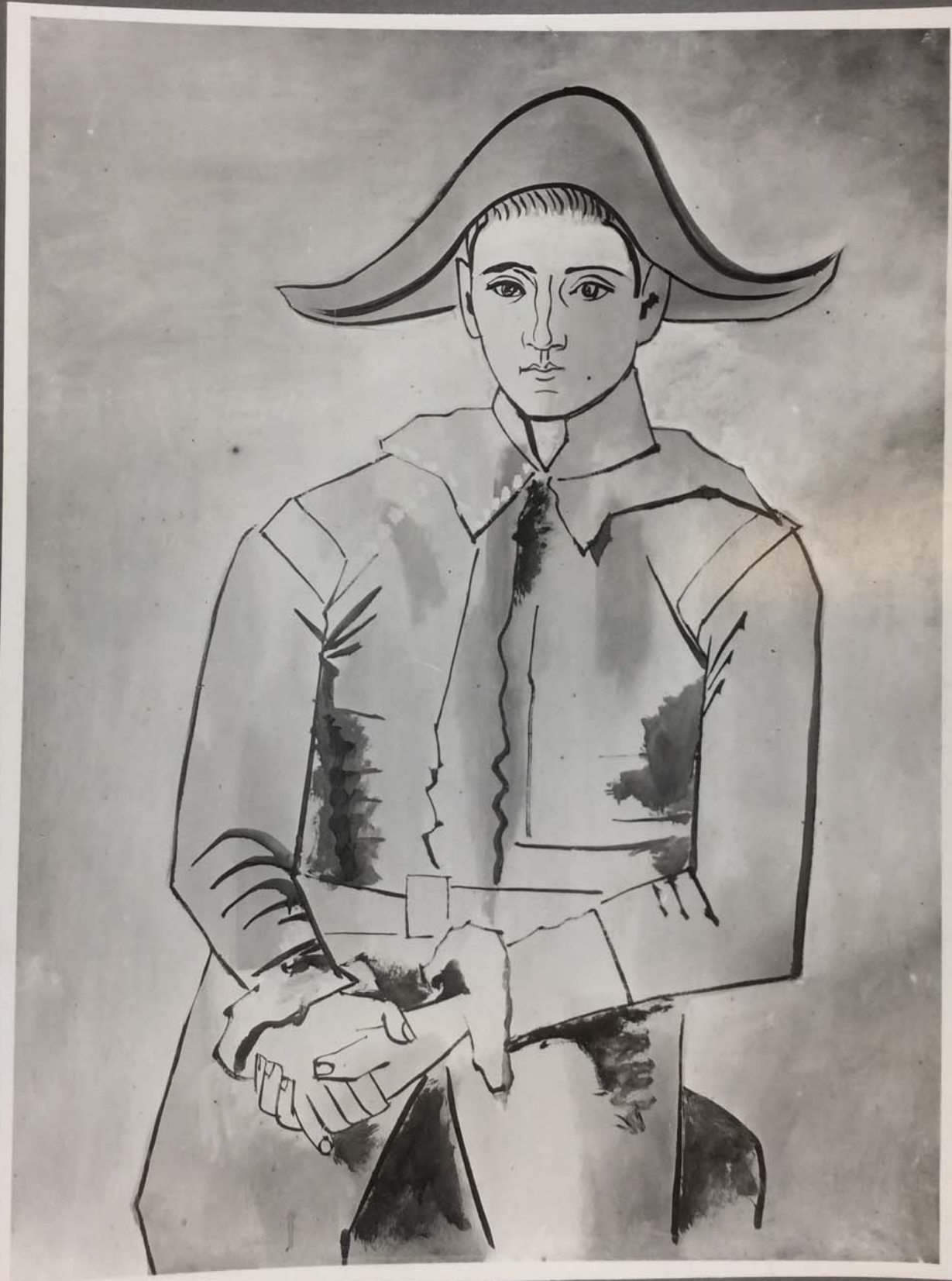
FOR STUDY PURPOSES ONLY. NOT FOR REPRODUCTION.

The Museum of Modern Art Archives, NY	Collection:	Series.Folder:
	Paul Rosenberg	III.A.1.101.c

<u>PICASSO - 1923</u> ARLEQUIN. 130 x 97 - 51½" x 38½" CH - IM OBERSTEG, GENÈVE	PH. :- CI. :- SL :- P. :- 837 N. :- St :- S.D.
--	--

FOR STUDY PURPOSES ONLY. NOT FOR REPRODUCTION.

The Museum of Modern Art Archives, NY	Collection:	Series.Folder:
	Paul Rosenberg	III.A.1.101.c



2009

FOR STUDY PURPOSES ONLY. NOT FOR REPRODUCTION.

The Museum of Modern Art Archives, NY	Collection:	Series.Folder:
	Paul Rosenberg	III.A.1.101.c

<p>PICASSO - 1923 ARLEQUIN. 130 x 97 - 51$\frac{1}{2}$" x 38$\frac{1}{2}$"</p>	<p>PH.: CI.: SL.: P. :- 2307 N. :- St.:</p>
--	---

FOR STUDY PURPOSES ONLY. NOT FOR REPRODUCTION.

The Museum of Modern Art Archives, NY	Collection:	Series.Folder:
	Paul Rosenberg	III.A.1.101.c



FOR STUDY PURPOSES ONLY. NOT FOR REPRODUCTION.

The Museum of Modern Art Archives, NY	Collecti III.A.1.101.c	Series.Folder:
	Paul Rosenberg	III.A.101.c

<p>PICASSO_1923 ARLEQUIN MAUVE AU MIROIR 100 x 81 - 39 $\frac{3}{4}$" x 32" FUKUSHIMA, JAPON-</p>	<p>PH. :- CI. :- SL. :- P. :-1971 N. :- SE. :-</p>
--	--

S.D.