

## **CONDITIONS OF USE FOR THIS PDF**

The images contained within this PDF may be used for private study, scholarship, and research only. They may not be published in print, posted on the internet, or exhibited. They may not be donated, sold, or otherwise transferred to another individual or repository without the written permission of The Museum of Modern Art Archives.

When publication is intended, publication-quality images must be obtained from SCALA Group, the Museum's agent for licensing and distribution of images to outside publishers and researchers.

If you wish to quote any of this material in a publication, an application for permission to publish must be submitted to the MoMA Archives. This stipulation also applies to dissertations and theses. All references to materials should cite the archival collection and folder, and acknowledge "The Museum of Modern Art Archives, New York."

Whether publishing an image or quoting text, you are responsible for obtaining any consents or permissions which may be necessary in connection with any use of the archival materials, including, without limitation, any necessary authorizations from the copyright holder thereof or from any individual depicted therein.

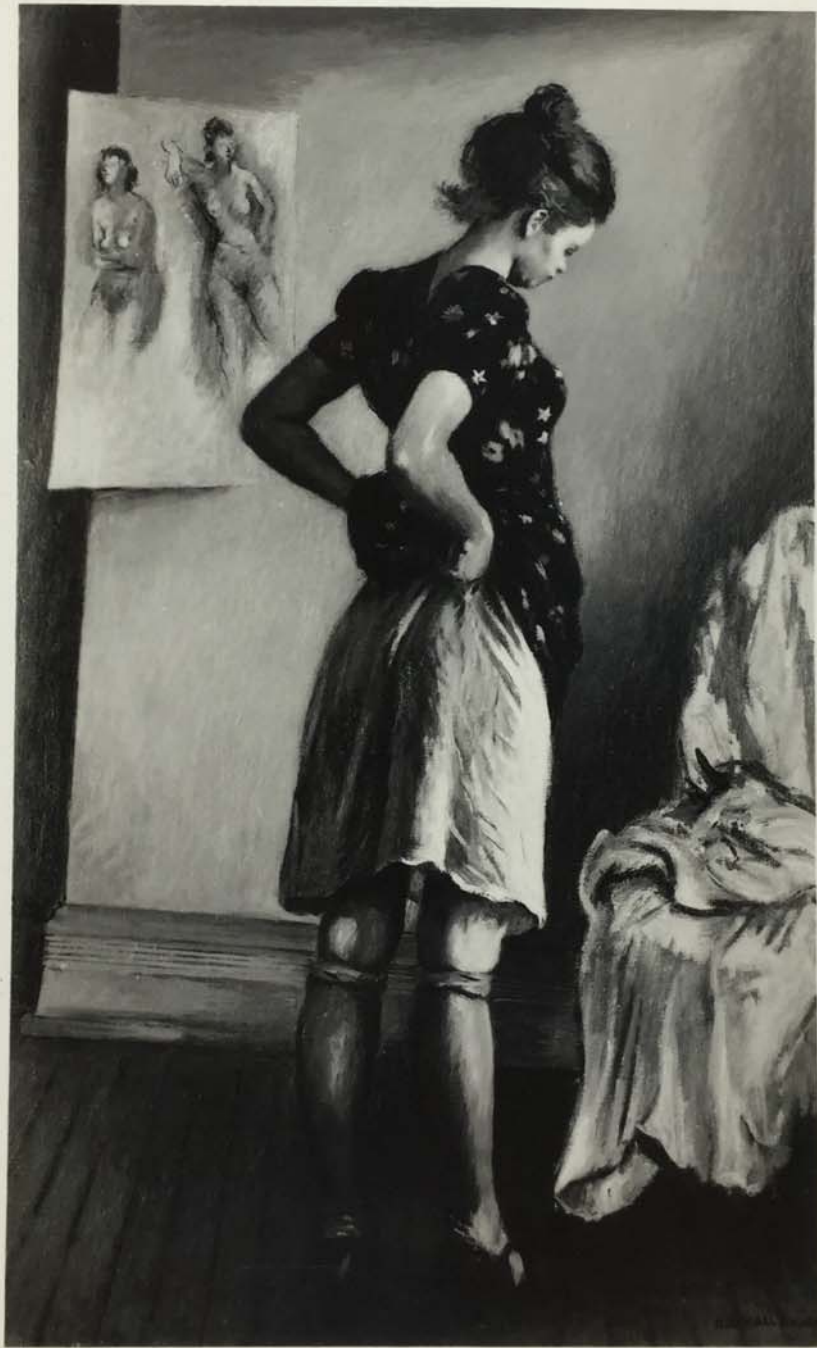
In requesting and accepting this reproduction, you are agreeing to indemnify and hold harmless The Museum of Modern Art, its agents and employees against all claims, demands, costs and expenses incurred by copyright infringement or any other legal or regulatory cause of action arising from the use of this material.

### **NOTICE: WARNING CONCERNING COPYRIGHT RESTRICTIONS**

The copyright law of the United States (Title 17, United States Code) governs the making of photocopies or other reproductions of copyrighted material. Under certain conditions specified in the law, libraries and archives are authorized to furnish a photocopy or other reproduction. One of these specified conditions is that the photocopy or reproduction is not to be "used for any purpose other than private study, scholarship, or research." If a user makes a request for, or later uses, a photocopy or reproduction for purposes in excess of "fair use," that user may be liable for copyright infringement.

FOR STUDY PURPOSES ONLY. NOT FOR REPRODUCTION.

The Museum of Modern Art Archives, NY	Collection:	Series.Folder:
	Paul Rosenberg	III . A . 1 . 10



FOR STUDY PURPOSES ONLY. NOT FOR REPRODUCTION.

The Museum of Modern Art Archives, NY	Collection:	Series.Folder:
	Paul Rosenberg	III . A . 1 . 10

*Barbe* *500*

*from*  
**Wickhaus**  
**2716**  
**W. 75th**  
Phone **FI. 2587**  
Los Angeles

*Raphael Safer 1937*

FOR STUDY PURPOSES ONLY. NOT FOR REPRODUCTION.

The Museum of Modern Art Archives, NY	Collection:	Series.Folder:
	Paul Rosenberg	III . A . 1 . 10



FOR STUDY PURPOSES ONLY. NOT FOR REPRODUCTION.

The Museum of Modern Art Archives, NY	Collection:	Series.Folder:
	Paul Rosenberg	III . A . 1 . 10

350

Judson Binford -  
seen stress & model

Barba

From  
**Luckhaus**  
Studio

2716  
W. 74th

Phone  
FL. 2587 Los Angeles

FOR STUDY PURPOSES ONLY. NOT FOR REPRODUCTION.

The Museum of Modern Art Archives, NY	Collection:	Series.Folder:
	Paul Rosenberg	III . A . 1 . 10



FOR STUDY PURPOSES ONLY. NOT FOR REPRODUCTION.

The Museum of Modern Art Archives, NY	Collection:	Series.Folder:
	Paul Rosenberg	III . A . 1 . 10

Don Chisholm  
"Song Home" 1937

For the

1350

From  
**Luckhaus**  
Studio

2716  
W. 7<sup>th</sup> St  
Phone  
FI. 2587 Los Angeles

FOR STUDY PURPOSES ONLY. NOT FOR REPRODUCTION.

The Museum of Modern Art Archives, NY	Collection:	Series.Folder:
	Paul Rosenberg	III . A . 1 . 10



FOR STUDY PURPOSES ONLY. NOT FOR REPRODUCTION.

The Museum of Modern Art Archives, NY	Collection:	Series.Folder:
	Paul Rosenberg	III . A . 1 . 10

*Barba*

From  
*Luckhaus*  
Studio  
2716  
W. 7<sup>th</sup> St  
Phone  
FI. 2587 Los Angeles

101

FOR STUDY PURPOSES ONLY. NOT FOR REPRODUCTION.

The Museum of Modern Art Archives, NY	Collection:	Series.Folder:
	Paul Rosenberg	III . A . 1 . 10



FOR STUDY PURPOSES ONLY. NOT FOR REPRODUCTION.

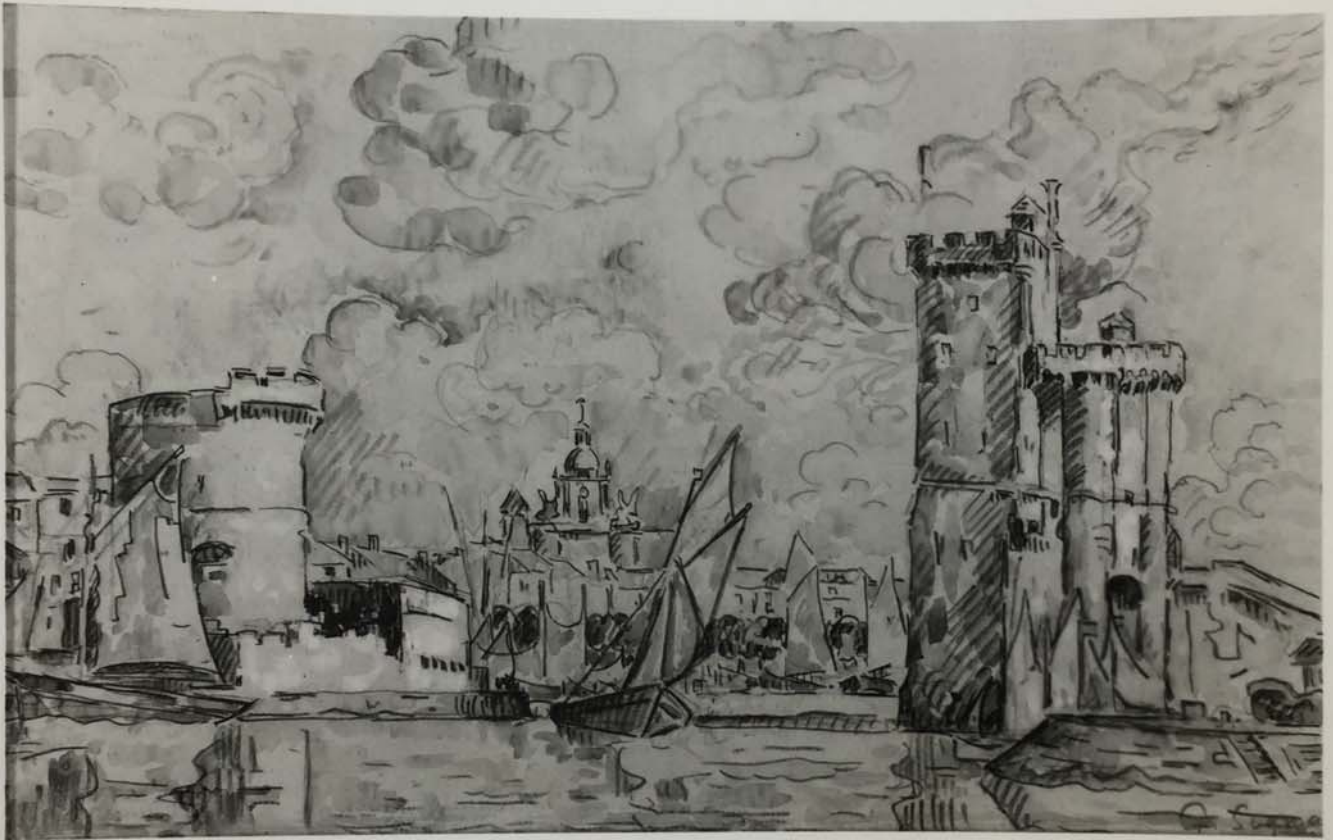
The Museum of Modern Art Archives, NY	Collection:	Series.Folder:
	Paul Rosenberg	III . A . 1 . 10

*Barbara*

120

FOR STUDY PURPOSES ONLY. NOT FOR REPRODUCTION.

The Museum of Modern Art Archives, NY	Collection:	Series.Folder:
	Paul Rosenberg	III . A . 1 . 10



FOR STUDY PURPOSES ONLY. NOT FOR REPRODUCTION.

The Museum of Modern Art Archives, NY	Collection:	Series.Folder:
	Paul Rosenberg	III . A . 1 . 10

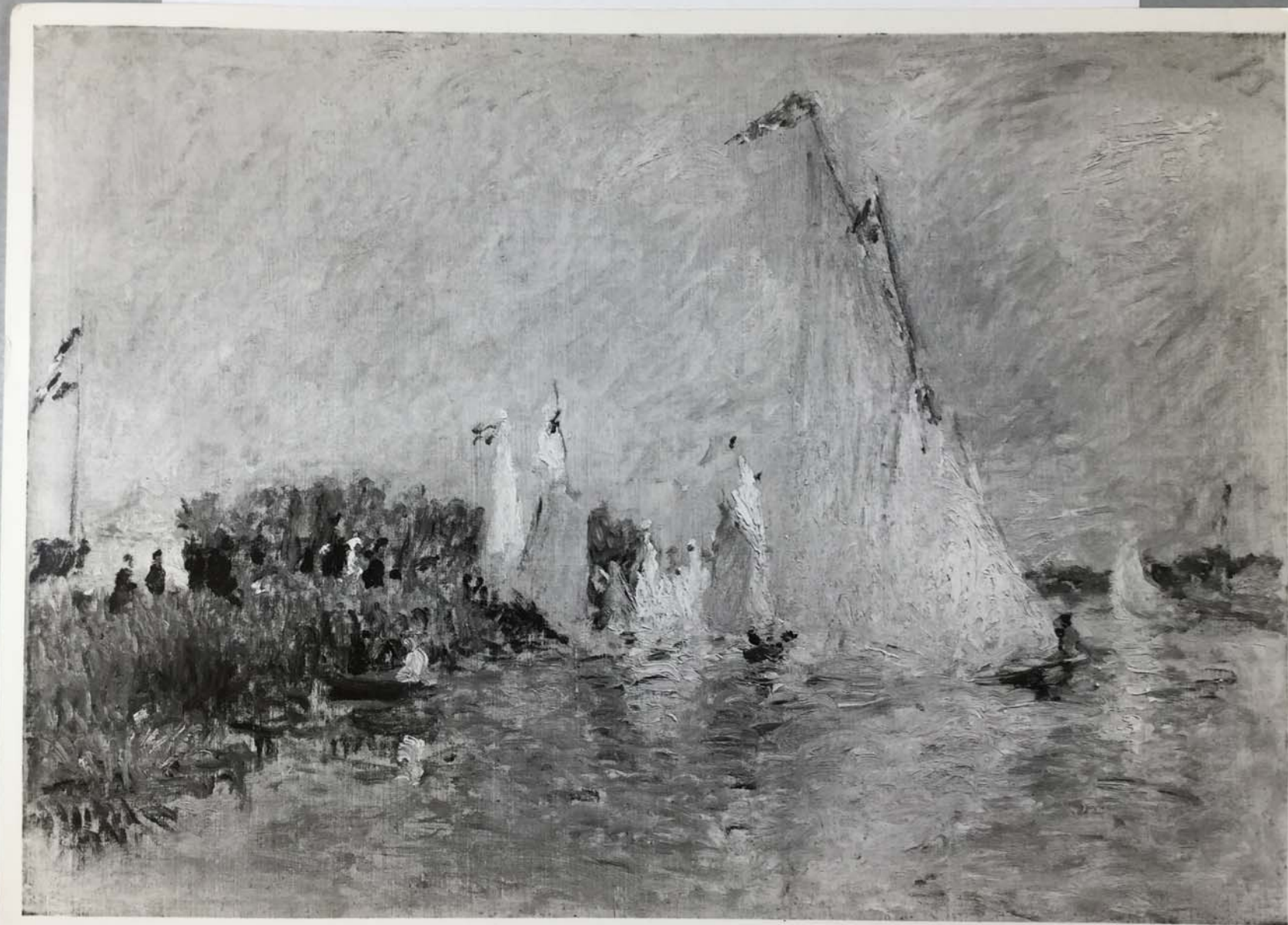
91/250  
Barbue

From  
**Luckhaus**  
Studio  
2716  
W. 7th St  
Phone  
Fl. 2587 Los Angeles

SIGNATURE

FOR STUDY PURPOSES ONLY. NOT FOR REPRODUCTION.

The Museum of Modern Art Archives, NY	Collection:	Series.Folder:
	Paul Rosenberg	III . A . 1 . 10



FOR STUDY PURPOSES ONLY. NOT FOR REPRODUCTION.

The Museum of Modern Art Archives, NY	Collection:	Series.Folder:
	Paul Rosenberg	III . A . 1 . 10

3293

33x46

MADE IN FRANCE

*Sold*

FOR STUDY PURPOSES ONLY. NOT FOR REPRODUCTION.

The Museum of Modern Art Archives, NY	Collection:	Series.Folder:
	Paul Rosenberg	III . A . 1 . 10



FOR STUDY PURPOSES ONLY. NOT FOR REPRODUCTION.

The Museum of Modern Art Archives, NY	Collection:	Series.Folder:
	Paul Rosenberg	III.A.1.10

"PONT DE JOINVILLE"

PAINTING BY A. DUMONIER DE SECONZAC.

Peter A. Juley & Son  
Photographers of Fine Arts  
SINCE 1898  
225 West 57th Street - New York City

C. W. KRAUSHAAR  
730 - 5<sup>TH</sup> AVE -

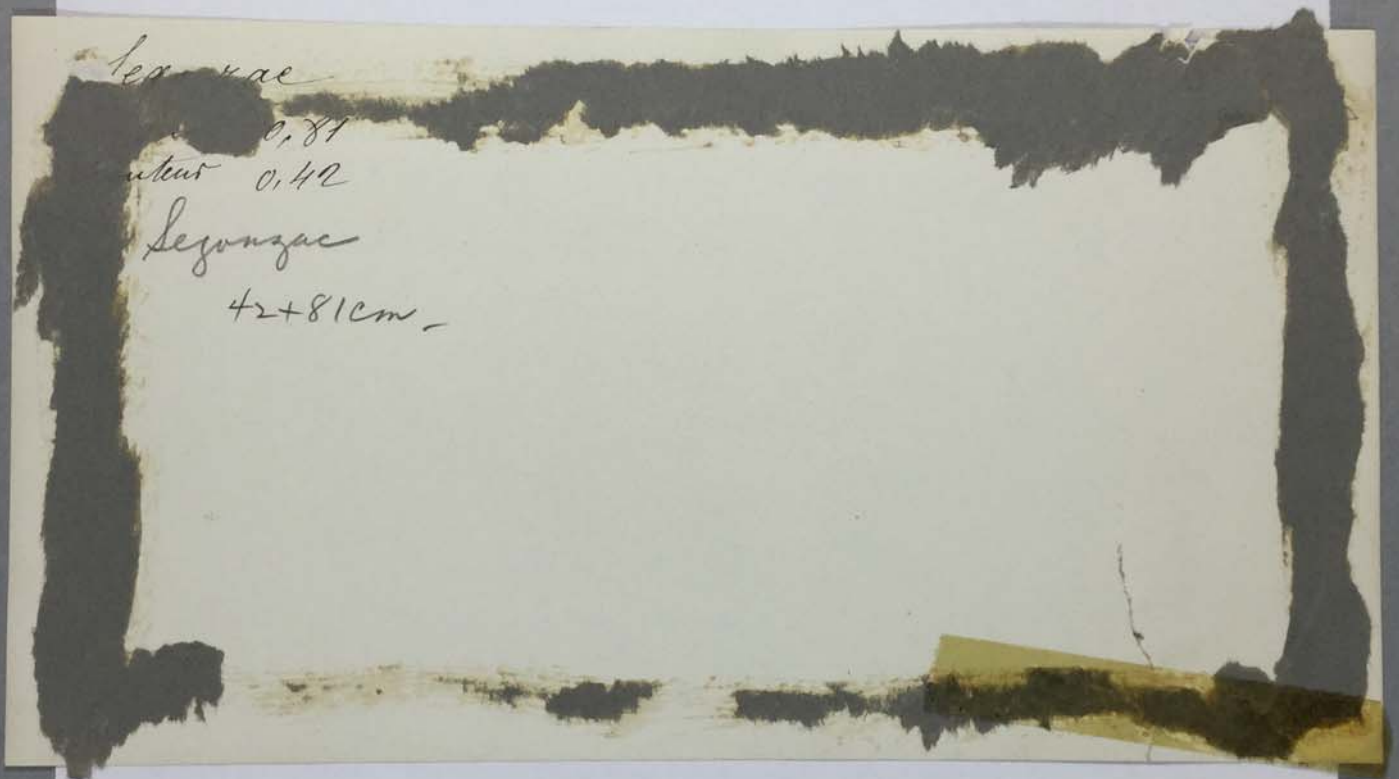
FOR STUDY PURPOSES ONLY. NOT FOR REPRODUCTION.

The Museum of Modern Art Archives, NY	Collection:	Series.Folder:
	Paul Rosenberg	III . A . 1 . 10



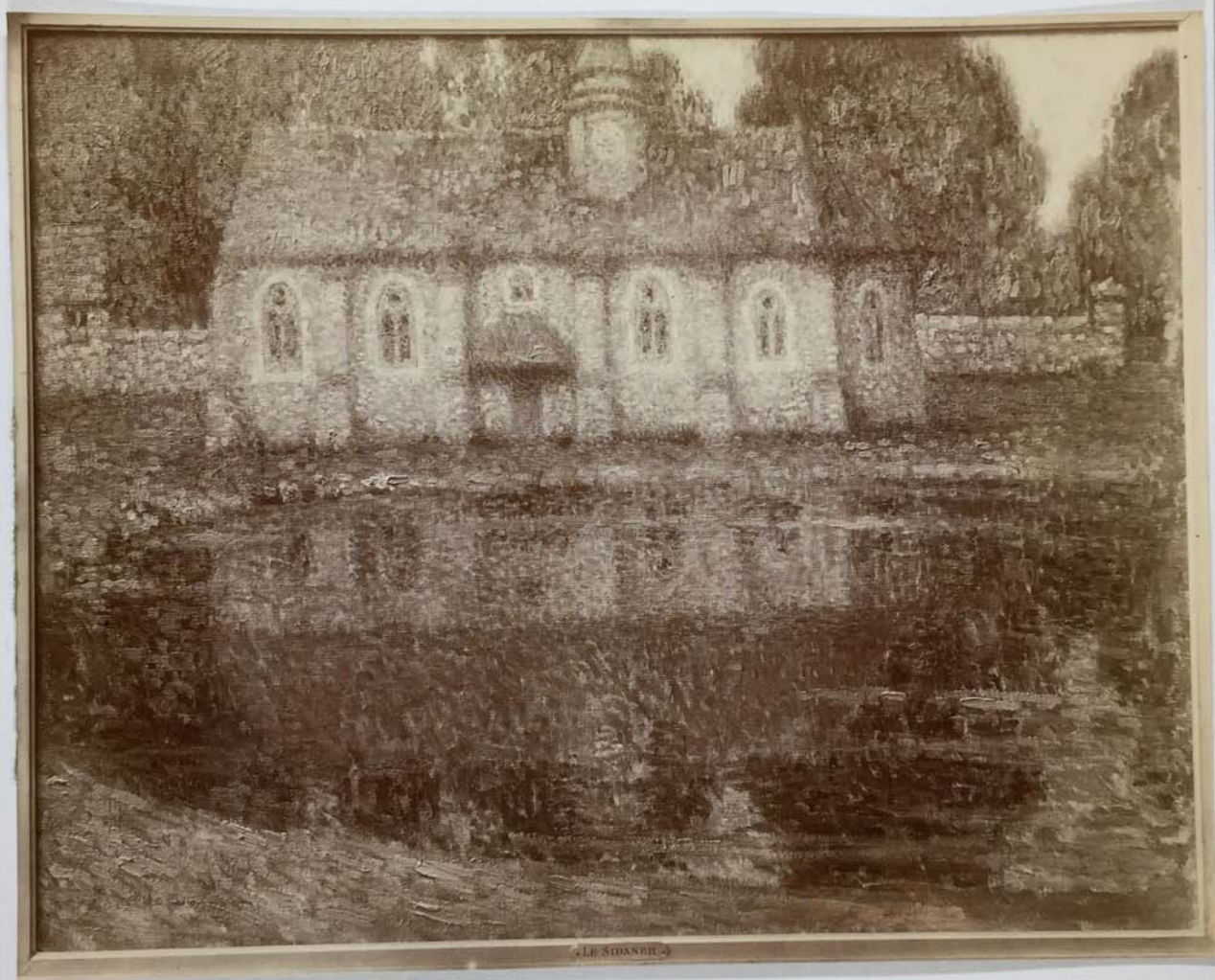
FOR STUDY PURPOSES ONLY. NOT FOR REPRODUCTION.

The Museum of Modern Art Archives, NY	Collection:	Series.Folder:
	Paul Rosenberg	III . A . 1 . 10



FOR STUDY PURPOSES ONLY. NOT FOR REPRODUCTION.

The Museum of Modern Art Archives, NY	Collection:	Series.Folder:
	Paul Rosenberg	III . A . 1 . 10



LE STANDE

FOR STUDY PURPOSES ONLY. NOT FOR REPRODUCTION.

The Museum of Modern Art Archives, NY	Collection:	Series.Folder:
	Paul Rosenberg	III . A . 1 . 10



FOR STUDY PURPOSES ONLY. NOT FOR REPRODUCTION.

The Museum of Modern Art Archives, NY	Collection:	Series.Folder:
	Paul Rosenberg	III . A . 1 . 10

TENIERS (DAVID LE JEUNE)  
Anvers 1610 Braxells 1690

The Gallery of Archduke Leopold

In a room, of which the walls are decorated with famous flemish paintings, the artist, standing on the left, close to a table, designates to the attention of a gentlemen a painting representing a young page.-

To the right, a door decorated with a pediment crowned with busts, introduces in another room, crossed by a rider wearing a wide felt hat. In the rear, a cupboard ornamented with caryatids. In the foreground, a small dog, a sphere, and books spread all over.

Signed to the left (erased signature) painted on metal:

HEIGHT: 39 centimeters  
WIDTH : 50 centimeters

Collection from the Count de schönbron Pommersfeldon, sale in Paris May 18, 1867-No. 225 of the catalogue

Collection A. Hulot, sale in Paris May 9th & 10th, 1892 No. 51 of the catalogue.

Collection De Ridder, sale in Paris, June 2nd, 1924, No. 72 of the catalogue.

Described in W. Bode: The Gallery of paintings, op.cit. and reproduced same work, pl. 84.

( Translated from French )

FOR STUDY PURPOSES ONLY. NOT FOR REPRODUCTION.

The Museum of Modern Art Archives, NY	Collection:	Series.Folder:
	Paul Rosenberg	III . A . 1 . 10



247

FOR STUDY PURPOSES ONLY. NOT FOR REPRODUCTION.

The Museum of Modern Art Archives, NY	Collection:	Series.Folder:
	Paul Rosenberg	III . A . 1 . 10



FOR STUDY PURPOSES ONLY. NOT FOR REPRODUCTION.

The Museum of Modern Art Archives, NY	Collection:	Series.Folder:
	Paul Rosenberg	III . A . 1 . 10

#3834  
60x87



FOR STUDY PURPOSES ONLY. NOT FOR REPRODUCTION.

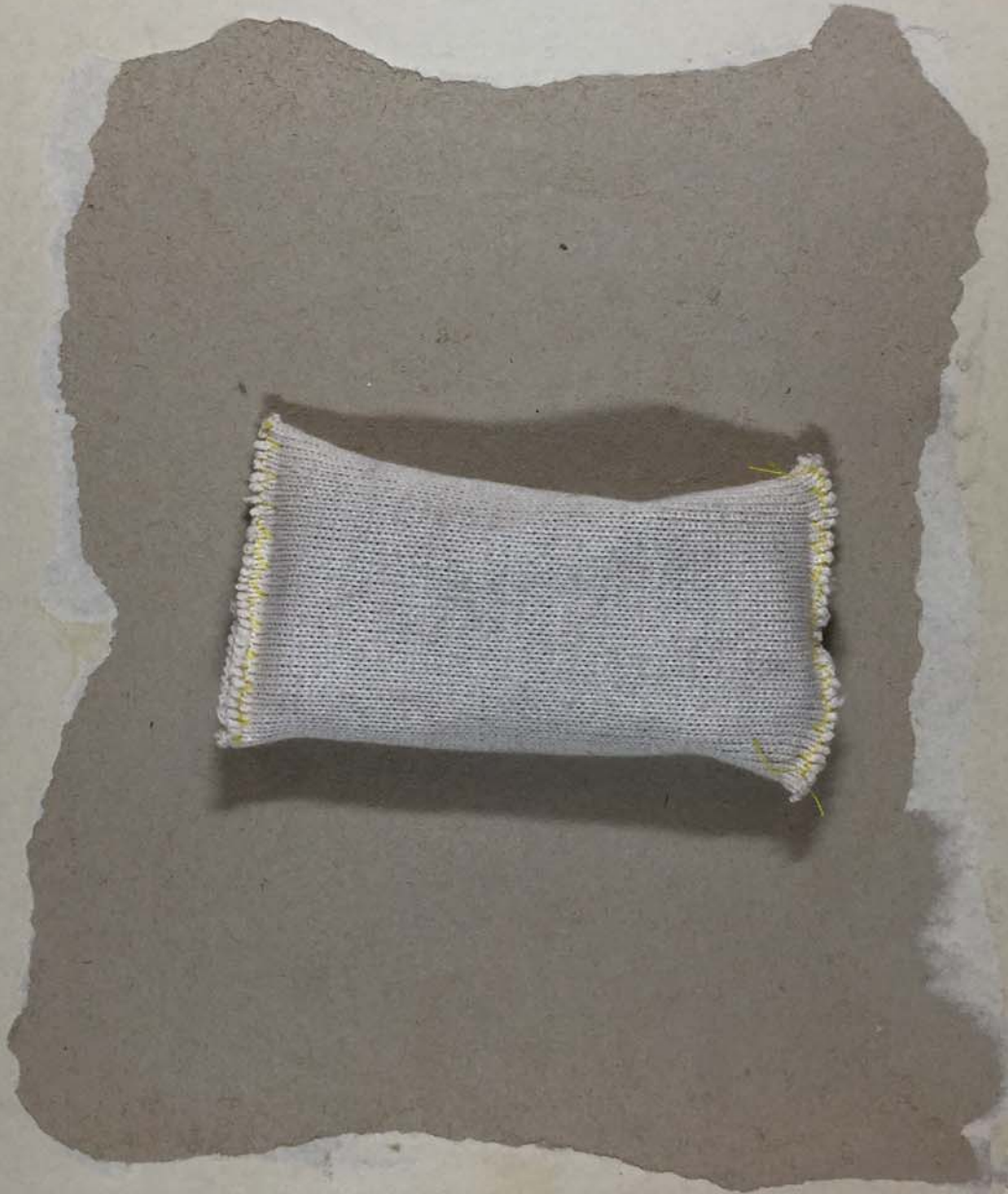
The Museum of Modern Art Archives, NY	Collection:	Series.Folder:
	Paul Rosenberg	III . A . 1 . 10



*De Seyoujiae large 81 haut 64.*

FOR STUDY PURPOSES ONLY. NOT FOR REPRODUCTION.

The Museum of Modern Art Archives, NY	Collection:	Series.Folder:
	Paul Rosenberg	III . A . 1 . 10



12556 Muscovy ... 9,54 baut 0,65 1/2