

CONDITIONS OF USE FOR THIS PDF

The images contained within this PDF may be used for private study, scholarship, and research only. They may not be published in print, posted on the internet, or exhibited. They may not be donated, sold, or otherwise transferred to another individual or repository without the written permission of The Museum of Modern Art Archives.

When publication is intended, publication-quality images must be obtained from SCALA Group, the Museum's agent for licensing and distribution of images to outside publishers and researchers.

If you wish to quote any of this material in a publication, an application for permission to publish must be submitted to the MoMA Archives. This stipulation also applies to dissertations and theses. All references to materials should cite the archival collection and folder, and acknowledge "The Museum of Modern Art Archives, New York."

Whether publishing an image or quoting text, you are responsible for obtaining any consents or permissions which may be necessary in connection with any use of the archival materials, including, without limitation, any necessary authorizations from the copyright holder thereof or from any individual depicted therein.

In requesting and accepting this reproduction, you are agreeing to indemnify and hold harmless The Museum of Modern Art, its agents and employees against all claims, demands, costs and expenses incurred by copyright infringement or any other legal or regulatory cause of action arising from the use of this material.

NOTICE: WARNING CONCERNING COPYRIGHT RESTRICTIONS

The copyright law of the United States (Title 17, United States Code) governs the making of photocopies or other reproductions of copyrighted material. Under certain conditions specified in the law, libraries and archives are authorized to furnish a photocopy or other reproduction. One of these specified conditions is that the photocopy or reproduction is not to be "used for any purpose other than private study, scholarship, or research." If a user makes a request for, or later uses, a photocopy or reproduction for purposes in excess of "fair use," that user may be liable for copyright infringement.

The Museum of Modern Art Archives, NY	Collection:	Series.Folder:
	MoMA PS1	11.A.1031

EXHIBITION PRESS RELEASE

***CRISS CROSS: SOME YOUNG NEW YORKERS III*
FEATURES NEW YORK ARTISTS' COLLABORATIVES**

On view February 7 through April 3, 1999

Long Island City, NY (February 1, 1999) — On February 7, 1999, *Criss Cross: Some Young New Yorkers III* will take over P.S.1's café, transforming it into a reading room/marketplace/combat zone where visitors are invited to explore the overlap of art, commerce, and entertainment. A collaboration between eight artists' groups from the New York area, *Criss Cross* includes: a teenage bedroom/performance space; a dressing room/boutique; a sewing workshop; a magazine reading room; a DJ studio/radio outpost; and a coed performance group ready and willing to guide, influence, mollify and pursue the café visitors. *Criss Cross* also includes live rock and roll, outdoor battle, and good company in the café and throughout the museum.

An investigation of collaborative activity in New York, *Criss Cross* reflects the climate of the city and of the year '99: many of the groups included in the exhibition have a focus that is entrepreneurial and commercial while others critique those impulses; and the majority of the artists participating in the exhibition are women whose practice is interactive and broadly multidisciplinary.

Criss Cross includes:

Actress

Between the sheets one will find a working-class, talented, conceptual art band with flashes of wit, charm, and good looks. Actress experiments with instinctive rhythms, natural powers, and are college-educated. Actress' favorite actress: Gena Rowlands.

(More)

The Museum of Modern Art Archives, NY	Collection:	Series.Folder:
	MoMA PS1	11.A.1031

Criss Cross/Page 2

FAT magazine

Founded by Josephine Meckseper, *FAT magazine* is a truly popular art magazine, a mock-tabloid uncontaminated by critspeak or promotional copy. A mixture of crime, sex, and art makes *FAT* an easy read for the entire family. On view at P.S.1 will be

FAT paraphernalia: *FAT* pantyhose, *FAT* glitter underwear, imagery from all three issues, x-rated posters, and videos by various *FAT* related artists.

On April 3rd, 1999 Josephine Meckseper challenges any or all female magazine editors to fight her in a "New York Gladiators"TM Dirk Westphal combat in P.S.1's courtyard; and *FAT magazine* issues a general challenge to fearless fighters of both sexes to wage all-out battle at P.S.1 (if you are willing to sign a waiver).

The Stand

The Stand, a collaborative work by artists Carissa Rodriguez and Jodi Busby, was first conceived as an urban event in the marketplace of a public park in the Lower East Side neighborhood of New York City. The artists created and inhabited a mobile workshop, hoping to extend the limits of public space to incorporate places for commerce and personal desire. The Stand creates pieces to be worn on the female body, clothing that functions as an agent for new fictions of everyday life in the city, while pioneering a nomadic mode of living.

UP & CO

Spearheaded by founder Uscha Pohl, UP & CO is a collaborative effort that includes:

- ART —an art gallery/project space housing regular exhibits
- photo, design, visual installations, video, and music collaborations
- FASHION —an in-house fashion collection designed by Ellis Kreuger and Uscha Pohl
- menswear/womenswear, underwear, outerwear, daywear, eveningwear, made to measure
- PUBLISHING —VERY Magazine: a quarterly forum for different creative domains internationally. VERY is now in its fifth issue with additional book projects on the way.

UP & CO's project at P.S.1 this spring includes: Uscha Pohl (concept, installation, film, photo, music), Ellis Kreuger (fashion, installation), Angela Hill (VERY), Hugo Tillman (photo/film), and Scars (music).

WFMU

WFMU is an iconoclastic, listener-supported, free-form radio station reaching all five boroughs of New York City and Northern New Jersey (at 91.1 FM); plus much of New York's Orange County and the Hudson Valley (at 90.1 FM). The station can also be heard live world-wide via its internet broadcasts (<http://www.wfmua.org>). WFMU is radio where just about anything goes. WFMU shuns the concept of one-dimensional narrowcasting practiced by most stations; mixing styles, techniques, media, and manners. WFMU encourages air staff to use the medium creatively and spontaneously, drawing on music, spoken word, live guests, listener telephone participation, and all modern technologies. WFMU thanks DJ Lynn Mullins for coordinating the station's participation in *Criss Cross*.

(More)

The Museum of Modern Art Archives, NY	Collection:	Series.Folder:
	MoMA PS1	11.A.1031

Criss Cross/Page 3

zingmagazine

Under the guise of a "curatorial crossing," *zingmagazine* invites curators from various disciplines to create forums of individual, contentual, and graphic fusion that are representative of divergent areas of particular interest. As a critical interface, *zingmagazine* aims to act as elixir of exchange, constantly imbued with a sense of energized contrasts. A special section devoted to *Criss Cross* artists' projects accompanies the exhibition in the magazine's spring 99 issue.

Off and On-Site Performance in the exhibition:

Sincerely Yours Escorts

Under the management of Johanna Burke, Sincerely Yours Escorts is a group of compassionate, intuitive visual and performing artists trained in the art of conversation and hostmanship to accommodate visitors within the multimedia extravaganza at P.S.1. As an escort service "employed" by P.S.1, Sincerely Yours will make guests at home in the museum space, preparing them for content and focusing importance within various interactive pieces. Sincerely Yours draws from etiquette guides by authors such as Emily Post and Judith Martin, as well as Geisha history, pop psychology texts, and past experience in customer service.

Available to the public 12-6 pm at the February 7th opening and every Saturday during the exhibition.

Standard and Poor

Standard and Poor is the collaborative alias for the work of Dominic McGill and David Henry Brown Jr. A play on the name of Standard and Poors, a corporation that rates the performance of Fortune 500 companies, this alias points out how the words "standard" and "poor" have come to represent wealth and success in American culture. Standard and Poor presents challenging scenarios to the public as REAL, combining symbolic and ironic actions that prompt behavioral cues learned via media/consumer culture. The subject of Standard And Poor's projects is the ambiguous nature of what constitutes happiness in a supersaturated "one size fits all" society, and all of the players who don't win the game. Standard And Poor's work is the bastard child of Fine Art, Documentary, and Sociological Process.

For P.S.1, Standard and Poor will be The Red Carpet Rollers—literally rolling out a red carpet off-site for existing and non-existent celebrities, creating and documenting the reactions of the gathered crowd. Standard and Poor operate the red carpet service as a business venture as well as a strategy in art.

Criss Cross is the third installment of the *Some Young New Yorkers* series initiated at P.S.1's reopening last year. *Some Young New Yorkers* showcases the work of talented emerging artists and lesser-known projects from the New York area. *Criss Cross: Some Young New Yorkers III* is co-curated by Alanna Heiss and Klaus Biesenbach with

(More)

The Museum of Modern Art Archives, NY	Collection:	Series.Folder:
	MoMA PS1	11.A.1031

Criss Cross/Page 4

assistance from Larissa Harris. *Criss Cross: Some Young New Yorkers III* is supported in part by a grant from Jerome Foundation.

###

P.S.1 Contemporary Art Center

Background: P.S.1 was founded in 1971 by Alanna Heiss as The Institute of Art and Urban Resources Inc., a non-profit organization dedicated to the transformation of abandoned and underutilized buildings in New York City into exhibition, performance, and studio spaces for artists. The Center now operates two internationally acclaimed spaces for contemporary art: P.S.1 in Long Island City and The Clocktower Gallery in Tribeca, both of which contain museum-quality galleries and extensive studio facilities for the National and International Studio Program.

P.S.1 is one of the largest and oldest arts organization in the United States solely devoted to contemporary art. Recognized as a defining force of the alternative space movement, P.S.1 stands out from major arts institutions in its cutting edge approach to exhibitions and direct involvement of artists within a scholarly framework. P.S.1 acts as an intermediary between the artist and its audience. Functioning as a living and active meeting place for the general public, P.S.1 is a catalyst for ideas, discourses and new trends in contemporary art. With its educational programs, P.S.1 assists the public in understanding art and provides the tools to appreciate contemporary art and its practices.

Funding: P.S.1 receives annual support from the New York City Department of Cultural Affairs towards operating costs. Programs of P.S.1 are supported by the New York City Department of Cultural Affairs, The Office of the President of the Borough of Queens, The Council of New York City, the P.S.1 Board of Directors, the New York State Council of the Arts, and the National Endowment for the Arts. Additional funding is provided by foundations, corporate and individual contributions, and membership and admission donations.

Directions: P.S.1 Contemporary Art Center is located just across the Queensboro Bridge from midtown Manhattan, at the intersection of Jackson and 46th Avenues, in Long Island City. It is easily accessible by bus and subway. Traveling by subway, visitors should take either E or F to 23 Street-Ely Avenue; the 7 to 45 Road-Courthouse Square; or the G to Court Square or 21 Street-Van Alst. They may also take the Q67 bus to Jackson and 46th Avenues or the B61 to Jackson Avenue.

Hours and Admission: P.S.1 is open from Noon to 6:00 p.m., Wednesday through Sunday. Admission is a \$5.00 suggested donation; \$2.00 for students and senior citizens; members free.

For more information, please contact:
Chloe Stromberg, Press Officer
T: (718) 784-2084/F: (718) 482-9454/mail@ps1.org

The Museum of Modern Art Archives, NY	Collection:	Series/Folder:
	MoMA PS1	11.A.1031

P.S.1 Contemporary Art Center
25-26 Jackson Ave at 46th Ave
Long Island City, New York 11101
T: 718.794.2084 F: 718.482.9454
e: mail@ps1.org

PS1

EXHIBITION PRESS RELEASE

CRISS CROSS: SOME YOUNG NEW YORKERS III FEATURES NEW YORK ARTISTS' COLLABORATIVES

On view February 7 through April 3, 1999.

Long Island City, NY (February 1, 1999) — On February 7, 1999, *Criss Cross: Some Young New Yorkers III* will take over P.S.1's café, transforming it into a reading room/marketplace/combat zone where visitors are invited to explore the overlap of art, commerce, and entertainment. A collaboration between eight artists' groups from the New York area, *Criss Cross* includes: a teenage bedroom/performance space; a dressing room/boutique; a sewing workshop; a magazine reading room; a DJ studio/radio outpost; and a coed performance group ready and willing to guide, influence, mollify and pursue the café visitors. *Criss Cross* also includes live rock and roll, outdoor battle, and good company in the café and throughout the museum.

An investigation of collaborative activity in New York, *Criss Cross* reflects the climate of the city and of the year '99: many of the groups included in the exhibition have a focus that is entrepreneurial and commercial while others critique those impulses; and the majority of the artists participating in the exhibition are women whose practice is interactive and broadly multidisciplinary.

Criss Cross includes:

Actress

Between the sheets one will find a working-class, talented, conceptual art band with flashes of wit, charm, and good looks. Actress experiments with instinctive rhythms, natural powers, and are college-educated. Actress' favorite actress: Gena Rowlands.

(More)

The Museum of Modern Art Archives, NY	Collection:	Series.Folder:
	MoMA PS1	11-A.1031

Criss Cross/Page 2

FAT magazine

Founded by Josephine Meckseper, *FAT magazine* is a truly popular art magazine, a mock-tabloid uncontaminated by critspeak or promotional copy. A mixture of crime, sex, and art makes *FAT* an easy read for the entire family. On view at P.S.1 will be *FAT* paraphernalia: *FAT* pantyhose, *FAT* glitter underwear, imagery from all three issues, x-rated posters, and videos by various *FAT* related artists.

On April 3rd, 1999 Josephine Meckseper challenges any or all female magazine editors to fight her in a "New York Gladiators"™ Dirk Westphal combat in P.S.1's courtyard; and *FAT magazine* issues a general challenge to fearless fighters of both sexes to wage all-out battle at P.S.1 (if you are willing to sign a waiver).

The Stand

The Stand, a collaborative work by artists Carissa Rodriguez and Jodi Busby, was first conceived as an urban event in the marketplace of a public park in the Lower East Side neighborhood of New York City. The artists created and inhabited a mobile workshop, hoping to extend the limits of public space to incorporate places for commerce and personal desire. The Stand creates pieces to be worn on the female body, clothing that functions as an agent for new fictions of everyday life in the city, while pioneering a nomadic mode of living.

UP & CO

Spearheaded by founder Uscha Pohl, UP & CO is a collaborative effort that includes:

- ART —an art gallery/project space housing regular exhibits
- photo, design, visual installations, video, and music collaborations
- FASHION —an in-house fashion collection designed by Ellis Kreuger and Uscha Pohl
- menswear/womenswear, underwear, outerwear, daywear, eveningwear, made to measure
- PUBLISHING—VERY Magazine: a quarterly forum for different creative domains internationally. VERY is now in its fifth issue with additional book projects on the way.

UP & CO's project at P.S.1 this spring includes: Uscha Pohl (concept, installation, film, photo, music), Ellis Kreuger (fashion, installation), Angela Hill (VERY), Hugo Tillman (photo/film), and Scars (music).

WFMU

WFMU is an iconoclastic, listener-supported, free-form radio station reaching all five boroughs of New York City and Northern New Jersey (at 91.1 FM); plus much of New York's Orange County and the Hudson Valley (at 90.1 FM). The station can also be heard live world-wide via its internet broadcasts (<http://www.wfm.org>). WFMU is radio where just about anything goes. WFMU shuns the concept of one-dimensional narrowcasting practiced by most stations; mixing styles, techniques, media, and manners. WFMU encourages air staff to use the medium creatively and spontaneously, drawing on music, spoken word, live guests, listener telephone participation, and all modern technologies. WFMU thanks DJ Lynn Mullins for coordinating the station's participation in *Criss Cross*.

(More)

The Museum of Modern Art Archives, NY	Collection:	Series.Folder:
	MoMA PS1	11.A.10.31

Criss Cross/Page 3

zingmagazine

Under the guise of a "curatorial crossing," *zingmagazine* invites curators from various disciplines to create forums of individual, contentual, and graphic fusion that are representative of divergent areas of particular interest. As a critical interface, *zingmagazine* aims to act as elixir of exchange, constantly imbued with a sense of energized contrasts. A special section devoted to *Criss Cross* artists' projects accompanies the exhibition in the magazine's spring 99 issue.

Off and On-Site Performance in the exhibition:

Sincerely Yours Escorts

Under the management of Johanna Burke, *Sincerely Yours Escorts* is a group of compassionate, intuitive visual and performing artists trained in the art of conversation and hostmanship to accommodate visitors within the multimedia extravaganza at P.S.1. As an escort service "employed" by P.S.1, *Sincerely Yours* will make guests at home in the museum space, preparing them for content and focusing importance within various interactive pieces. *Sincerely Yours* draws from etiquette guides by authors such as Emily Post and Judith Martin, as well as Geisha history, pop psychology texts, and past experience in customer service.

Available to the public 12-6 pm at the February 7th opening and every Saturday during the exhibition.

Standard and Poor

Standard and Poor is the collaborative alias for the work of Dominic McGill and David Henry Brown Jr. A play on the name of Standard and Poors, a corporation that rates the performance of Fortune 500 companies, this alias points out how the words "standard" and "poor" have come to represent wealth and success in American culture. *Standard and Poor* presents challenging scenarios to the public as REAL, combining symbolic and ironic actions that prompt behavioral cues learned via media/consumer culture. The subject of *Standard And Poor's* projects is the ambiguous nature of what constitutes happiness in a supersaturated "one size fits all" society, and all of the players who don't win the game. *Standard And Poor's* work is the bastard child of Fine Art, Documentary, and Sociological Process.

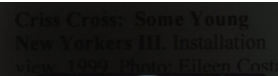
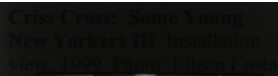
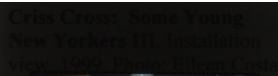
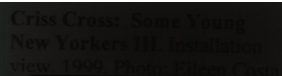
For P.S.1, Standard and Poor will be The Red Carpet Rollers—literally rolling out a red carpet off-site for existing and non-existent celebrities, creating and documenting the reactions of the gathered crowd. Standard and Poor operate the red carpet service as a business venture as well as a strategy in art.

Criss Cross is the third installment of the *Some Young New Yorkers* series initiated at P.S.1's reopening last year. *Some Young New Yorkers* showcases the work of talented emerging artists and lesser-known projects from the New York area. *Criss Cross: Some Young New Yorkers III* is co-curated by Alanna Heiss and Klaus Biesenbach with

(More)

FOR STUDY PURPOSES ONLY. NOT FOR REPRODUCTION.

The Museum of Modern Art Archives, NY	Collection:	Series.Folder:
	MoMA PS1	II.A.1031



The Museum of Modern Art Archives, NY	Collection:	Series.Folder:
	MoMA PS1	II.A.1031

Sincerely Yours Escorts (in front of Stephen Antonakos' *Welcome*). The *Criss Cross: Some Young New Yorkers III* exhibition. Photo: Lauren Krohn.



Please Return to P.S.1
22-25 Jackson Ave
L.I.C., NY 11101

Sincerely Yours Escorts (in front of Stephen Antonakos' *Welcome*). The *Criss Cross: Some Young New Yorkers III* exhibition. Photo: Lauren Krohn.



Please Return to P.S.1
22-25 Jackson Ave
L.I.C., NY 11101

Sincerely Yours Escorts (in front of Stephen Antonakos' *Welcome*). The *Criss Cross: Some Young New Yorkers III* exhibition. Photo: Lauren Krohn.



Please Return to P.S.1
22-25 Jackson Ave
L.I.C., NY 11101

Sincerely Yours Escorts (in front of Stephen Antonakos' *Welcome*). The *Criss Cross: Some Young New Yorkers III* exhibition. Photo: Lauren Krohn.



Please Return to P.S.1
22-25 Jackson Ave
L.I.C., NY 11101

Sincerely Yours Escorts (in front of Stephen Antonakos' *Welcome*). The *Criss Cross: Some Young New Yorkers III* exhibition. Photo: Lauren Krohn.



Please Return to P.S.1
22-25 Jackson Ave
L.I.C., NY 11101

Sincerely Yours Escorts (in front of Stephen Antonakos' *Welcome*). The *Criss Cross: Some Young New Yorkers III* exhibition. Photo: Lauren Krohn.



Please Return to P.S.1
22-25 Jackson Ave
L.I.C., NY 11101

Sincerely Yours Escorts (in front of Stephen Antonakos' *Welcome*). The *Criss Cross: Some Young New Yorkers III* exhibition. Photo: Lauren Krohn.



Please Return to P.S.1
22-25 Jackson Ave
L.I.C., NY 11101

Sincerely Yours Escorts (in front of Stephen Antonakos' *Welcome*). The *Criss Cross: Some Young New Yorkers III* exhibition. Photo: Lauren Krohn.



Please Return to P.S.1
22-25 Jackson Ave
L.I.C., NY 11101

Sincerely Yours Escorts (in front of Stephen Antonakos' *Welcome*). The *Criss Cross: Some Young New Yorkers III* exhibition. Photo: Lauren Krohn.



Please Return to P.S.1
22-25 Jackson Ave
L.I.C., NY 11101

Group photo of the **Sincerely Yours Escorts** (in front of Stephen Antonakos' *Welcome*, 1999), from the *Criss Cross* exhibition. Photo: Lauren Krohn.



Please Return to P.S.1
22-25 Jackson Ave
L.I.C., NY 11101

FOR STUDY PURPOSES ONLY. NOT FOR REPRODUCTION.

The Museum of Modern Art Archives, NY	Collection:	Series.Folder:
	MoMA PS1	II.A.1031

Sincerely Yours Escorts (in front of
Stephen Antonakos' *Welcomes*). The Crisis
Cross: Some Young New Yorkers III
exhibition. Photo: Lauren Krohn.



Please Return to P.S.1
22-25 Jackson Ave
L.I.C., NY 11101

Sincerely Yours Escorts (in front of
Stephen Antonakos' *Welcomes*). The Crisis
Cross: Some Young New Yorkers III
exhibition. Photo: Lauren Krohn.



Please Return to P.S.1
22-25 Jackson Ave
L.I.C., NY 11101

Sincerely Yours Escorts (in front of
Stephen Antonakos' *Welcomes*). The Crisis
Cross: Some Young New Yorkers III
exhibition. Photo: Lauren Krohn.



Please Return to P.S.1
22-25 Jackson Ave
L.I.C., NY 11101

Sincerely Yours Escorts (in front of
Stephen Antonakos' *Welcomes*). The Crisis
Cross: Some Young New Yorkers III
exhibition. Photo: Lauren Krohn.



Please Return to P.S.1
22-25 Jackson Ave
L.I.C., NY 11101

Sincerely Yours Escorts (in front of
Stephen Antonakos' *Welcomes*). The Crisis
Cross: Some Young New Yorkers III
exhibition. Photo: Lauren Krohn.



Please Return to P.S.1
22-25 Jackson Ave
L.I.C., NY 11101

Sincerely Yours Escorts (in front of
Stephen Antonakos' *Welcomes*). The Crisis
Cross: Some Young New Yorkers III
exhibition. Photo: Lauren Krohn.



Please Return to P.S.1
22-25 Jackson Ave
L.I.C., NY 11101

Sincerely Yours Escorts (in front of
Stephen Antonakos' *Welcomes*). The Crisis
Cross: Some Young New Yorkers III
exhibition. Photo: Lauren Krohn.



Please Return to P.S.1
22-25 Jackson Ave
L.I.C., NY 11101

Sincerely Yours Escorts (in front of
Stephen Antonakos' *Welcomes*). The Crisis
Cross: Some Young New Yorkers III
exhibition. Photo: Lauren Krohn.



Please Return to P.S.1
22-25 Jackson Ave
L.I.C., NY 11101

Sincerely Yours Escorts (in front of
Stephen Antonakos' *Welcomes*). The Crisis
Cross: Some Young New Yorkers III
exhibition. Photo: Lauren Krohn.



Please Return to P.S.1
22-25 Jackson Ave
L.I.C., NY 11101

Group photo of the Sincerely Yours Escorts (in
front of Stephen Antonakos' *Welcomes*, 1999),
from the Crisis Cross exhibition. Photo: Lauren
Krohn.



Please Return to P.S.1
22-25 Jackson Ave
L.I.C., NY 11101