

CONDITIONS OF USE FOR THIS PDF

The images contained within this PDF may be used for private study, scholarship, and research only. They may not be published in print, posted on the internet, or exhibited. They may not be donated, sold, or otherwise transferred to another individual or repository without the written permission of The Museum of Modern Art Archives.

When publication is intended, publication-quality images must be obtained from SCALA Group, the Museum's agent for licensing and distribution of images to outside publishers and researchers.

If you wish to quote any of this material in a publication, an application for permission to publish must be submitted to the MoMA Archives. This stipulation also applies to dissertations and theses. All references to materials should cite the archival collection and folder, and acknowledge "The Museum of Modern Art Archives, New York."

Whether publishing an image or quoting text, you are responsible for obtaining any consents or permissions which may be necessary in connection with any use of the archival materials, including, without limitation, any necessary authorizations from the copyright holder thereof or from any individual depicted therein.

In requesting and accepting this reproduction, you are agreeing to indemnify and hold harmless The Museum of Modern Art, its agents and employees against all claims, demands, costs and expenses incurred by copyright infringement or any other legal or regulatory cause of action arising from the use of this material.

NOTICE: WARNING CONCERNING COPYRIGHT RESTRICTIONS

The copyright law of the United States (Title 17, United States Code) governs the making of photocopies or other reproductions of copyrighted material. Under certain conditions specified in the law, libraries and archives are authorized to furnish a photocopy or other reproduction. One of these specified conditions is that the photocopy or reproduction is not to be "used for any purpose other than private study, scholarship, or research." If a user makes a request for, or later uses, a photocopy or reproduction for purposes in excess of "fair use," that user may be liable for copyright infringement.

The Museum of Modern Art Archives, NY	Collection:	Series.Folder:
	MoMA PS1	I.A.364

Artists' Stamps and Stamp Images

An international invitational traveling exhibition
of approximately 3000 stamps and stamp images

Represented in *Artists' Stamps and Stamp Images*
are the works of 35 artists and 7 artists' groups in 9 countries

CANADA
FRANCE
GERMANY
GREAT BRITAIN
HUNGARY
JAPAN
MEXICO
NETHERLANDS
UNITED STATES OF AMERICA

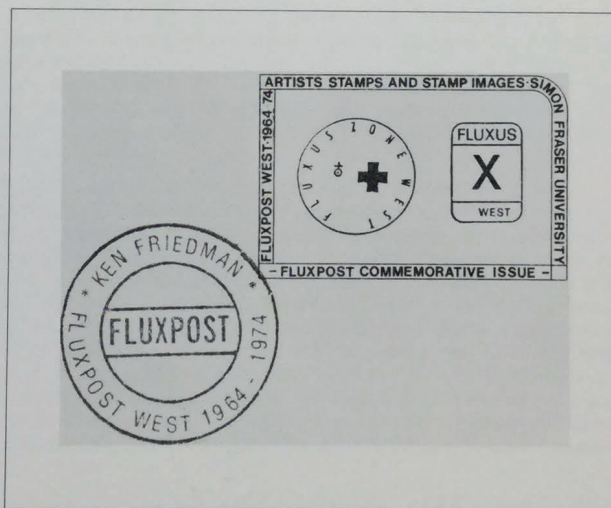
*This catalogue was made possible
by the generous assistance of
THE CANADA COUNCIL*

Artists' Stamps and Stamp Images was created by James Warren Felter,
Curator / Director of Exhibitions at the Centre for Communications & the Arts,
Simon Fraser University, Burnaby, British Columbia, Canada V5A 1S6

The Museum of Modern Art Archives, NY	Collection:	Series.Folder:
	MoMA PS1	I.A.364

Artists' Stamps and Stamp Images

FLUXPOST COMMEMORATIVE ISSUE
FLUXUS WEST 1964 — 1974



37. Gummed perforated stamp; single image 3.3x4.5 cm. each, black on white. Full sheet of twenty-five 25.4x31.8 cm. Signed, numbered 50/50. Cancelled by artist.

The Museum of Modern Art Archives, NY	Collection:	Series.Folder:
	MoMA PS1	I.A.364

INTRODUCTION

The word "stamp" as used in this exhibit refers to what might be termed the pseudo-postage stamp; that is, an alternate stamp opposed to the normal government publications designed for use in the official or government postal services of the world. Indeed, several "artists' stamps" (as opposed to postage stamps) were issued during government postal strikes. Examples are the *Blue Stamp* by Yves Klein of France and the stamps of Allen Jones of England. Others appear so much like postage stamps that they have traveled through the official services, mostly undetected (such as the *10c U.S. Air Mail* by an anonymous American artist), and, I might add, often without the knowledge of the artist. One such stamp, *US XX* by William Farley, was affixed to an envelope mailed by a friend of Farley's to his mother in Phoenix, Arizona. The envelope was delivered by the US Secret Service. The ensuing investigation led to Farley, and he was requested to turn over all remaining copies of the stamp to the Secret Service. He did. His purpose, however, was not to fool the U.S. Government (in Canada it is called stealing from the Queen), but to make a particular artist's statement which only could be made by an "artist's stamp".

Many artists, like Carl Daouset in Canada and Dieter Roth in Germany, have produced Stamp Art as a part of a collection or folio of different works. Others, such as Robert Fried in the United States and Christopher Pratt and Harry Savage in Canada have produced a series of fine print stamp images. A few artists, for example, Donald Evans in the Netherlands and Joel Smith in the United States, have created stamp or "postal" paintings.

Donald Evans makes his stamps for a personal fantasy world. He began in 1957. May Wilson in New York makes her stamps to affix to her hand-sprayed cards. They are, then, not an end or statement in themselves, but personal art material to be used with other material to create something else. There are probably as many reasons why "artists' stamps" have been created as there are artists who have created them. But the Curator, and the public, is often more concerned with the objects than the reasons, and, though the reasons differ, the objects do represent a growing international medium of artistic expression.

The "history" of Stamp Art is contemporary. FLUXUS, an international artists' group devoted to research art, explored in the early 60's not only the medium of Mail Art using the government postal systems, but through FLUXPOST Projects created a para-postal system which from time to time — often with hilarious results — functioned along with regular government postal services in several nations. Ken Friedman, George Maciunas, Daniel Spoerri, Ben Vautier and Bob Watts, all colleagues in FLUXUS in the United States were among the earliest artists to utilize the stamp as an art medium. The contribution of FLUXUS led to my commissioning of the *Fluxpost Commemorative Issue* which appears on the cover page. This stamp serves both as a document of the exhibition and as a commemorative of the work of FLUXUS WEST from 1964 to 1974. This stamp exists as a published multiple in both a signed and un-signed edition. It is the work of Ken Friedman and is based on the logos for FLUXUS WEST designed by Wolfgang Feelisch, Co-ordinator of FLUXUS WEST in Germany, and for FLUXUS ZONE WEST designed by Joseph Beuys, eminent German artist and art activist.

The earliest example of Stamp Art from Canada is the 1967 gummed imperforate *Centennial Project* created by N.E. Thing Co. to commemorate an exhibition at the Douglas Gallery in Vancouver. The Coach House Press in Toronto has printed many of the Canadian artists' stamps, including Michael Hayden's 1972 *Self-Portrait: Hommage to Colonel Sanders*, and the 1971-73 *Johnny Canuck Issue* by Nelvana Ltd. Rick/Simon, Vice-president: Stamps, at Coach House, has himself designed several of The Coach House Press works, including the 1974 *Kings Highway Stamp*.

There are several important stamp artists whose original work could not be obtained for this exhibition. This introduction would not be complete without an acknowledgement of their contribution. They are George Ashley, Niel Felts, Allen Fish, Ray Johnson, Peter Martin, all of the United States; Yves Klein of France, Joe Tilson of England and Sylvia Palchinski of England and Canada. There are, I am sure, many others around the world who have made a contribution to Stamp Art. I have several names of artists in South America, Europe and Asia who are believed to have made Stamp Art, but at the time of publication, their contribution had not been confirmed.

James Warren Felter
22 March 1976

The Museum of Modern Art Archives, NY	Collection:	Series.Folder:
	MoMA PS1	I.A.364

THE ARTISTS

CANADA 1
 Imants Abolins
 Anonymous
 Peter Bell
 Derek Michael Besant
 The Coach House Press
 Carl Daouset
 Marcel Dot
 Jas. W. Felter
 Friends of The Coach House Press
 Michael Hayden
 Susan Hillman
 La Groupe des Beaux Arts
 John Long
 N.E. Thing Co.
 Nelvana Limited
 A. Neumann
 Christopher Pratt
 Art Rat
 Harry Savage
 Unknown
 Vancouver School of Art: Graphic Design Students

FRANCE 13
 George Ashley

GERMANY 14
 Klaus Berkhardt
 Carl Camu
 Bernd Lobach
 Dieter Roth

GREAT BRITAIN 18
 Allen Jones

HUNGARY 19
 Endre Tot

JAPAN 20
 Bernd Lobach

MEXICO 21
 Robert Fried

NETHERLANDS 22
 Donald Evans

UNITED STATES OF AMERICA 24

Anonymous
 Dana Atchley
 David Cook
 William Farley
 Fluxus
 Robert Fried
 Ken Friedman
 M. L. Heivly
 E. F. Higgins III
 Joel Smith
 Pat Tavenner
 Radford Thomas
 May Wilson
 Robert Watts

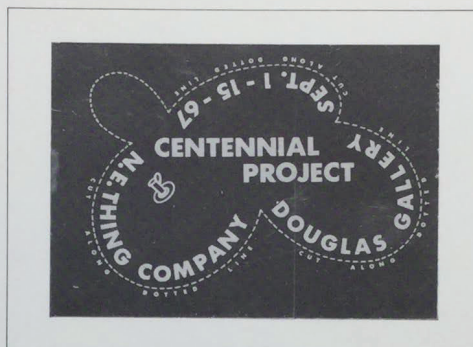
SPECIAL THANKS TO:
 Glenbow-Alberta Institute, Canada
 Image Bank, Canada
 Archiv Sohm, Germany
 The Tait Gallery, Great Britain
 ART WORKERS NEWS, USA
 Museum of Conceptual Art, USA
 Performing Art Services Inc., USA

The Museum of Modern Art Archives, NY	Collection:	Series.Folder:
	MoMA PS1	I.A.364

CANADA

1967

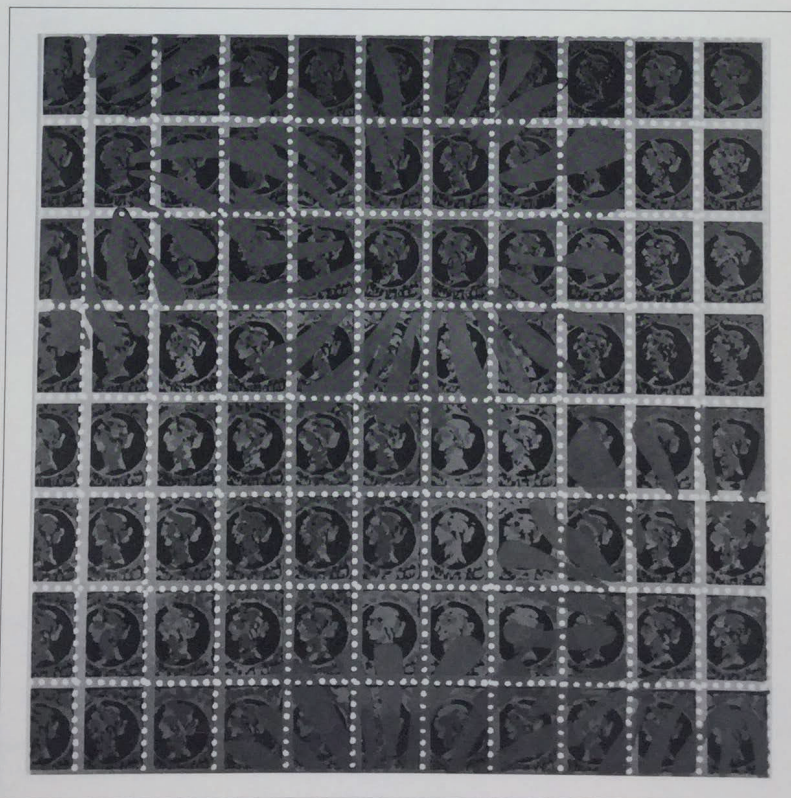
CENTENNIAL PROJECT
by N.E. Thing Co.



1. Gummed imperforate stamp; single image 5.1 x 7.1 cm.
blue on silver.

1968

COLLINGWOOD, ONTARIO 1885
by Peter Bell



53. Stamp sheet image; serigraph 42.7 x 41 cm. (image), multicoloured. Signed, numbered 21/25 and dated.

The Museum of Modern Art Archives, NY	Collection:	Series.Folder:
	MoMA PS1	I.A.364

CANADA

1969

WHICH TWIN HAS THE TONI?

by Marcel Dot and Art Rat

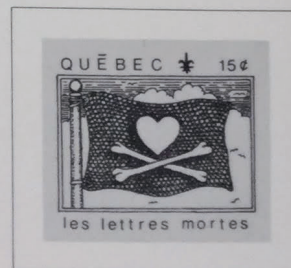
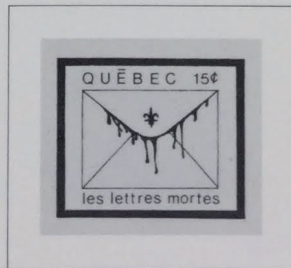
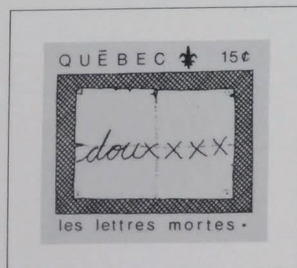


2. Stamp image postcard; single image 10.7 x 13.3 cm., black on white.

1970

LES LETTRES MORTES

by Carl Daouset

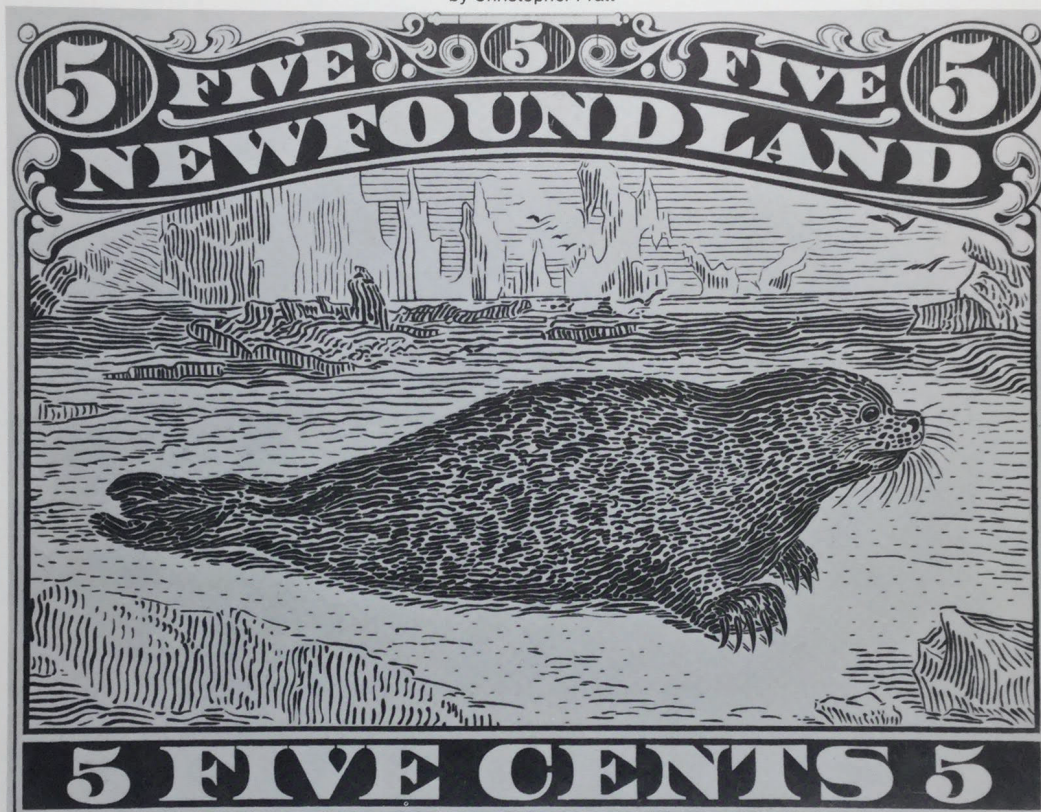


3. Gummed perforated stamps; three images 3.5x4.1 cm. each, black on white. Full sheet of eighteen: 25.3x15.7. Signed and dated.

The Museum of Modern Art Archives, NY	Collection:	Series.Folder:
	MoMA PS1	I.A.364

CANADA
1970

BLUE SEAL
by Christopher Pratt



54. 5c stamp image; serigraph, image 42.7 x 54 cm., blue on white. Signed, numbered 13/15 and dated.

1971

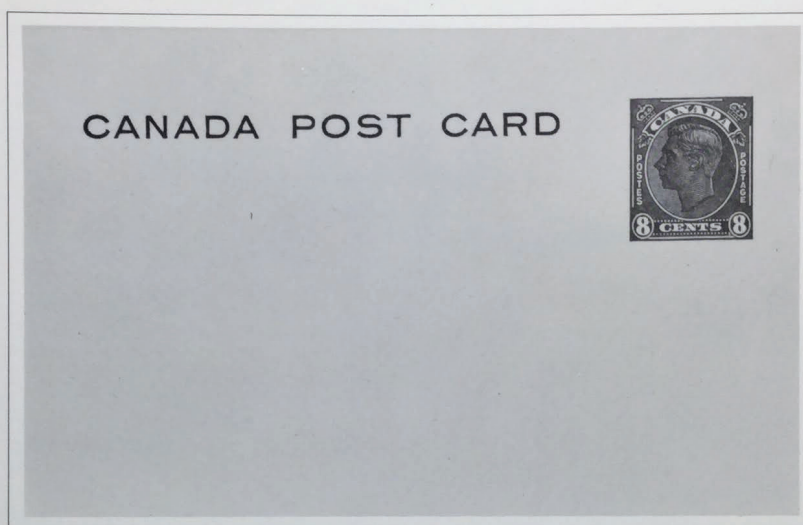
QUEBEC LIBRE
Unknown



21a. 10c stamp image; single image 3.2 x 3.7 cm. on envelope 10.5 x 24 cm., multicoloured. Cancelled by Ottawa Post Office, May 22, 1974.

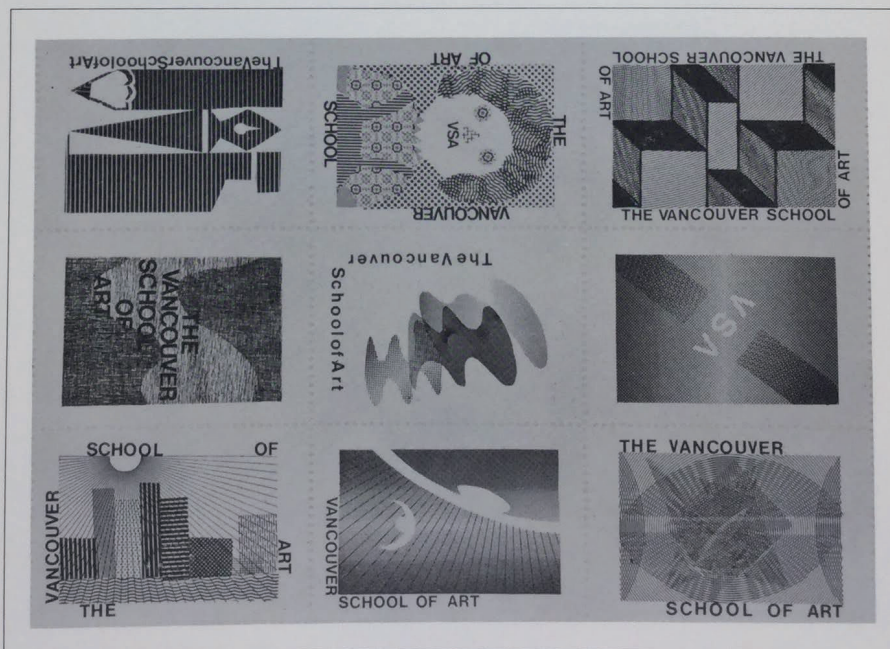
The Museum of Modern Art Archives, NY	Collection:	Series.Folder:
	MoMA PS1	I.A.364

CANADA
1972
KING GEORGE 8c POSTCARD
Anonymous



- 22a. Blue, black on cream card 8.5 x 13.9 cm.
 b. Blue, black on cream card 9 x 13.9 cm., w/ overprint FIRST DAY OF ISSUE, Cancelled by Toronto P.O. April 24, 1972
 c. Blue, black on cream card 9.2 x 13.9 cm. w/ overprint FAKE COLLAGE BY Ray Johnson

CHRISTMAS 1972
by Graphic Design Students, Vancouver School of Art



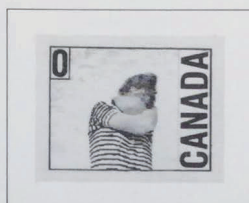
41. Ungummed perforated stamps; forty-eight images 3.6 x 5.1 cm. each, black on white. Full sheet of forty-eight: 43 x 50.6 cm.

The Museum of Modern Art Archives, NY	Collection:	Series.Folder:
	MoMA PS1	I.A.364

CANADA

1972

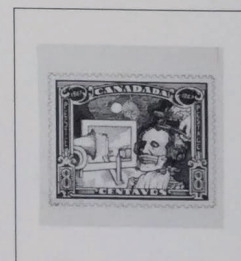
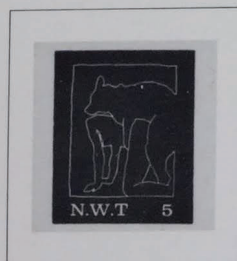
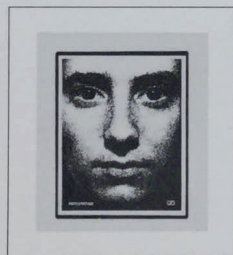
SELF-PORTRAIT: HOMMAGE TO COLONEL SANDERS
by Michael Hayden



4. Gummed perforated stamp; single image 2.5x3.2 cm., black on white. Full sheet of twenty: 28x21.6 cm. Signed and dated.

1973

COACH HOUSE PRESS ISSUE
by Friends of The Coach House Press



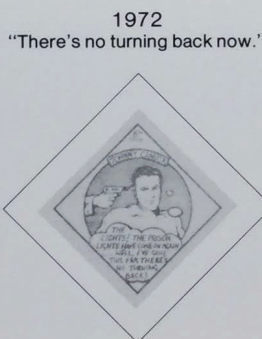
23. Gummed perforated stamps; thirty-eight images on forty-two stamps. Each stamp 3.5 x 3.1 cm. Two full sheets, blue-black on white and scarlet on white: 27.8x21.5 cm. each.

The Museum of Modern Art Archives, NY	Collection:	Series.Folder:
	MoMA PS1	I.A.364

CANADA
1971-1973
JOHNNY CANUCK ISSUE
by Nelvana Limited
1971
"They had better . . ."



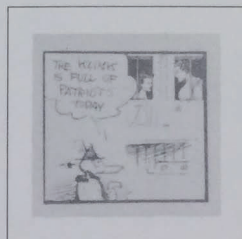
24a. Ungummed perforated stamp; single image 3.7 x 2.5 cm., brown on white. Full sheet of fifty-six: 26.5 x 20 cm.



1972
"There's no turning back now."

24b. Ungummed perforated stamp; single image 2.5 x 2.5 cm. diamond, blue on white. Full sheet of eighty: 26.5 x 20 cm.

1973
"All the patriots . . ."



5. Ungummed perforated stamp; single image 3.1 x 3.3 c., scarlet on white. Full sheet of forty-two: 21.5 x 27.9 cm.

The Museum of Modern Art Archives, NY	Collection:	Series.Folder:
	MoMA PS1	I.A.364

CANADA

1972

ONE FOR HIGHWAY 14

by Harry Savage



56. Stamp image: serigraph 40 x 58.2 cm., multicoloured. Signed, numbered 4/5 and dated.

1973

ONE TO LOOK AT

by Harry Savage



57. Stamp image: serigraph 40 x 58.2 cm., multicoloured. Signed, numbered 4/5 and dated.

26 FOR THE MUNICIPAL DUMP

by Harry Savage

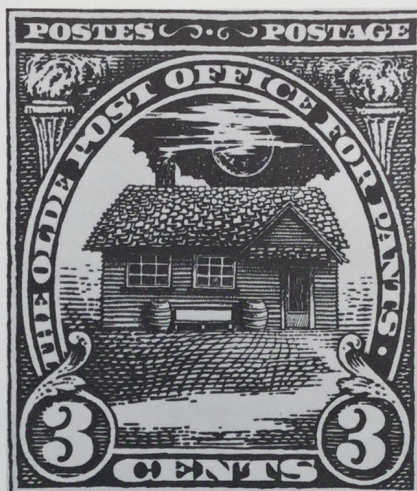


58. Stamp image: serigraph 40 x 58.2 cm., multicoloured. Signed, numbered 3/5 and dated.

The Museum of Modern Art Archives, NY	Collection:	Series.Folder:
	MoMA PS1	I.A.364

CANADA
1973

THE OLDE POST OFFICE FOR PANTS
by John Long



42. Stamp image; serigraph 50 x 43 cm., brown on lime green. Signed, numbered A/P and dated.

CANADA AIR
by The Coach House Press



43. 5c Stamp image; photo-offset 44 x 60 cm., green, black on white.

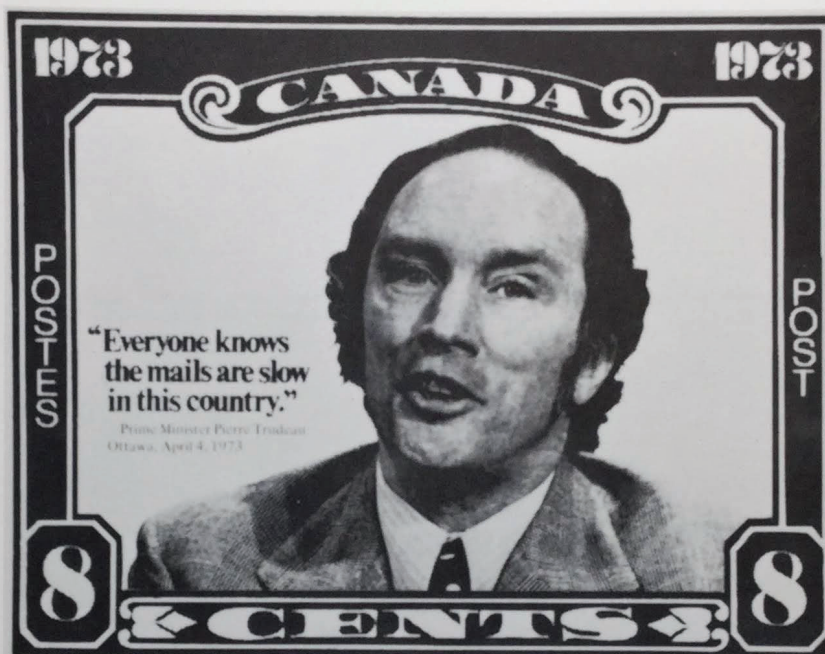
The Museum of Modern Art Archives, NY	Collection:	Series.Folder:
	MoMA PS1	I.A.364

CANADA

1973

1973 TRUDEAU

by Imants Abolins

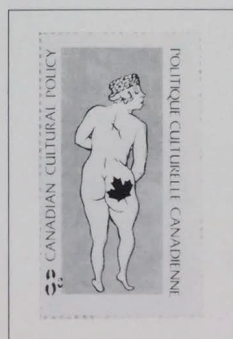


25a. 8c stamp image: magazine cover illustration. Single image 19.4 x 24 cm., black and white.
b. CANADIAN MAGAZINE COVER; black, magenta on white.

1974

CANADIAN CULTURAL POLICY

by La Groupe des Beaux Arts



26. 8c stamp image 5.1 x 3 cm. Full sheet of thirty 26.5 x 18.8 cm; green and black on white.

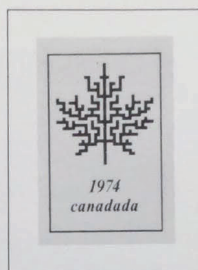
The Museum of Modern Art Archives, NY	Collection:	Series.Folder:
	MoMA PS1	I.A.364

CANADA

1974

CANADADA 1974

by Jas. W. Felter



6. Gummed perforated stamp; single image 3.8x2.5 cm., black on white. Full sheet of twenty-five: 27.8 x 21.5 cm. Signed, numbered 50/50 and dated. Cancelled by the artist.

STAMP # 5

by Derek Michael Besant



27. Stamp image: intaglio 10.2x11.8 cm., black on white. Block of four: 30.5x30.7 cm. Signed and dated.

The Museum of Modern Art Archives, NY	Collection:	Series.Folder:
	MoMA PS1	I.A.364

CANADA

1974

STAMP

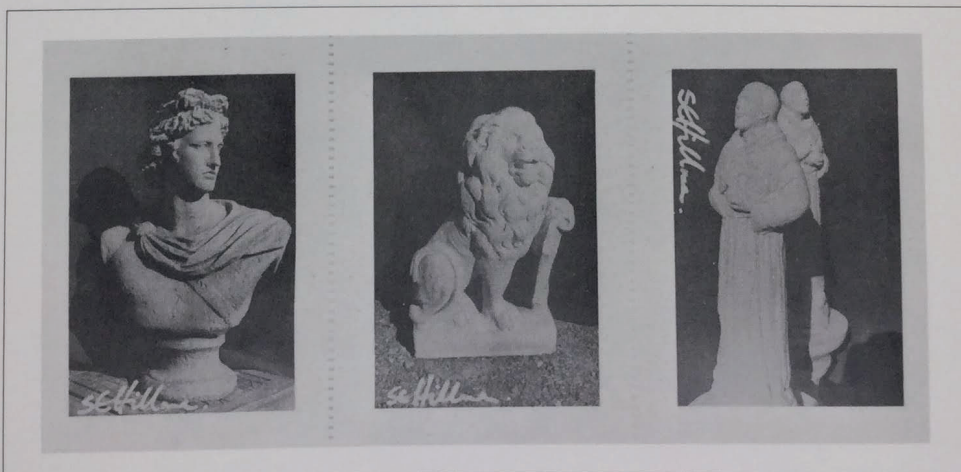
by A. Neumann



7. Stamp image: rubber stamp. Single image 4.9x4.2 cm., black on white. Block of four: 12.2x9.4 cm. Signed and dated.

UNTITLED

by Susan Hillman



28. Gummed perforated photo-stamps; 16 images 6.9x5 cm. each; black on white. Full sheet of sixteen 27.6x20.1 cm.

The Museum of Modern Art Archives, NY	Collection:	Series.Folder:
	MoMA PS1	I.A.364

CANADA
1974

KINGS HIGHWAY STAMP
by The Coach House Press



21b. Gummed stamp image 2.5x3.7 cm. Grey-green, cream on white. On envelope 10.5x24 cm. w/ regular postage stamp. Cancelled by Toronto Post Office.

PRINCE ALBERT
by Christopher Pratt



55. 10c stamp image; serigraph 77.7 x 57.9 cm., black on white. Signed, numbered A/P and dated.

The Museum of Modern Art Archives, NY	Collection:	Series.Folder:
	MoMA PS1	I.A.364

FRANCE

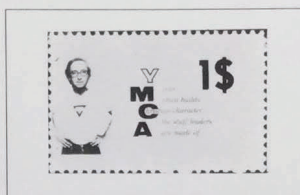
1973

STAMPS
by George Ashley

UNTITLED



YMCA



THREE GRACES



29a. Three gummed perforated photo-stamps 4 x 2.6 cm. each; black on white.

1974

"POSTNIXINPOST Series"
by George Ashley

Return of Columbine 6c



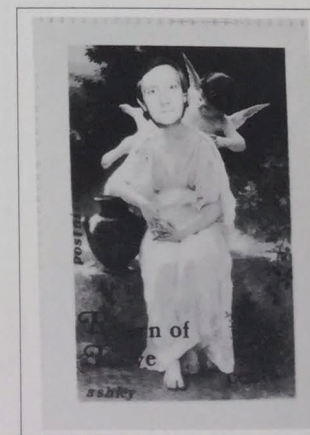
Return of Grandeur 1.00



Return of Serenity 9c



Return of Love



29b. Ungummed perforated photostamps; 4 images 6.2 x 4.5 cm. each, black on white. Block of four 12.2 x 9.5 each.

The Museum of Modern Art Archives, NY	Collection:	Series.Folder:
	MoMA PS1	I.A.364

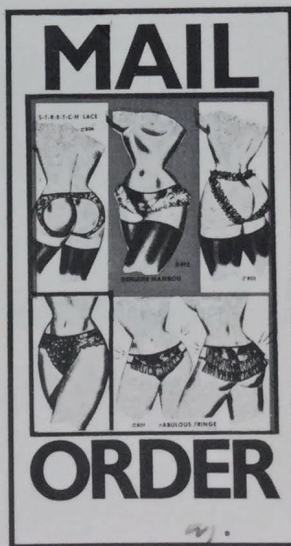
GREAT BRITAIN

STAMP
by Allen Jones



8a. Gummed imperforate stamp 5 x 3.8 cm., grey on white. Initialed.

MAIL ORDER
by Allen Jones



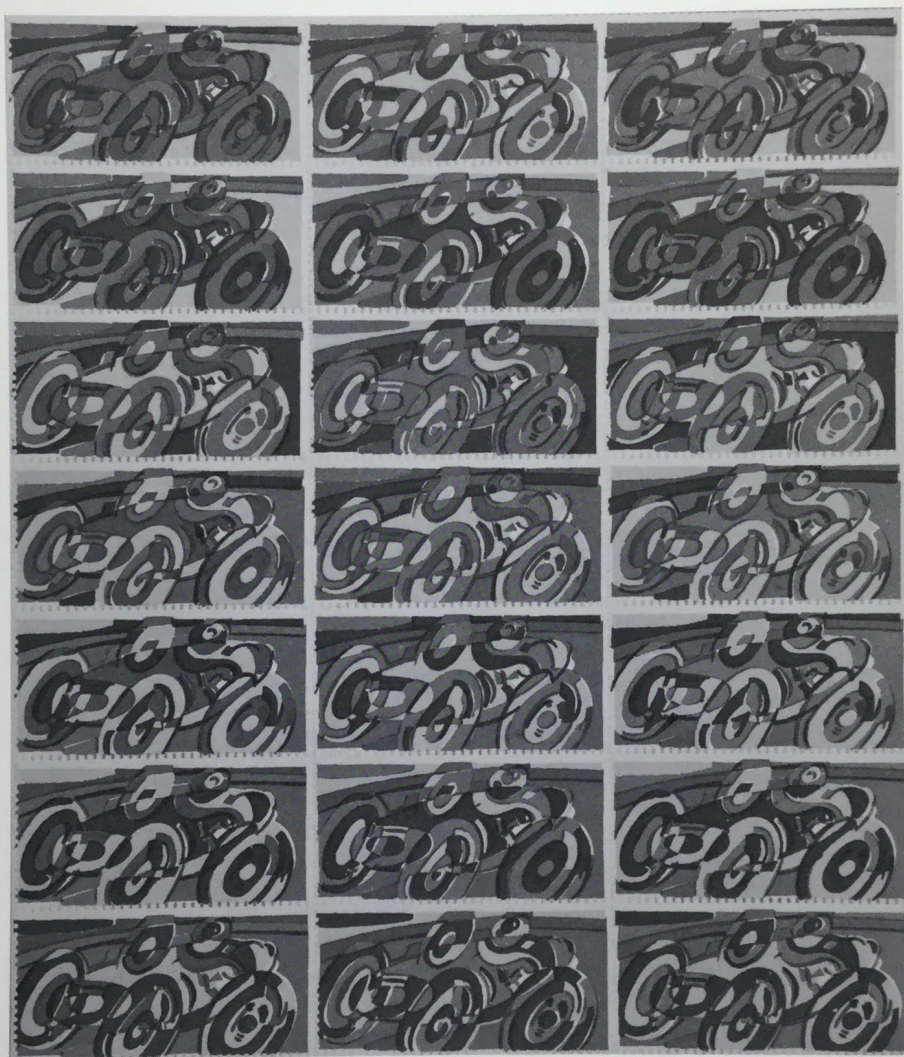
8b. Gummed imperforate stamp 10.2 x 5.9 cm., black, fuschia on white. Initialed.

The Museum of Modern Art Archives, NY	Collection:	Series.Folder:
	MoMA PS1	I.A.364

GERMANY

1972

CAR RACE
by Dieter Roth



64. Gummed perforated stamp; single image 2.5x5.1 cm. multicoloured. Two full sheets 31.4x57.2 cm. of sixty each. Total of one hundred and twenty stamps, each with different colour arrangement.

The Museum of Modern Art Archives, NY	Collection:	Series.Folder:
	MoMA PS1	I.A.364

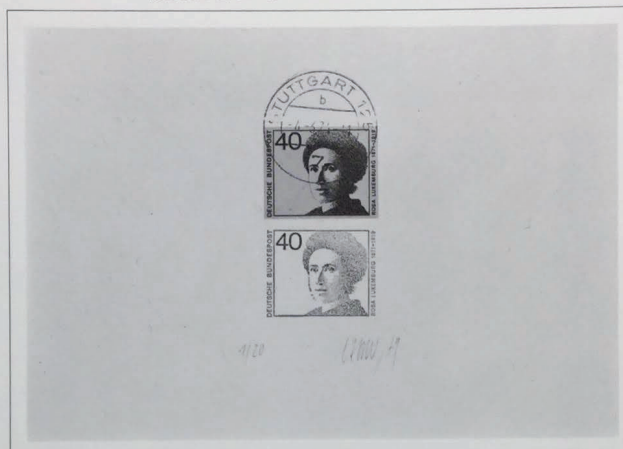
GERMANY

1973 - 74

EDITIONS CAMU

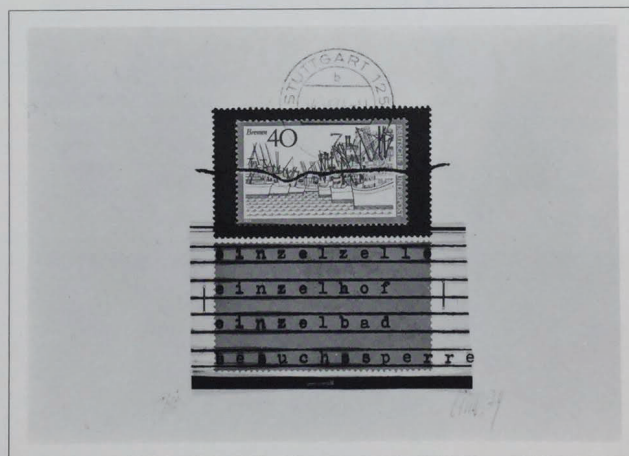
by Carl Camu

MONA LISA OF THE 20th CENTURY



38c. Collage; 10.5 x 14.8 cm. w/postage stamp, stamp image and cancellation mark: orange and black on white. Signed, numbered 1/20 and dated 1974.

CONCEPT AND DRAFT OF A STAMP FROM STUTTGART



38d. Collage; 10 x 14.8 cm. w/two postage stamps, stamp image and cancellation mark; orange and black on white. Signed, numbered 1/10 and dated 1974.

38a. May 1968-73: Next Day Will Come — Definitely

Collage; 10.5 x 14.8 cm. w/two postage stamps, stamp image and two cancellation marks: red, black on white. Signed, numbered 1/80 and dated 1973.

38b. We Fall Permanently — Climb Stairs

Collage; 10.5 x 14.8 cm. w/eight stamp images: black and white. Signed, numbered 1/32,000 and dated 1973.

38e. Camuhingen — Verbal Falisification of a Small Town

Envelope collage; 10.7 x 14.8 cm. w/ hand-coloured postage stamp: red, black on white. Signed, numbered 1/10 and dated 1974.

38f. Tickets and Deer by Marc

Collage; 10.5 x 14.8 cm. w/postage stamp, photo stamp and cancellation mark: multicoloured on white. Signed, numbered 1/100 and dated 1974.

The Museum of Modern Art Archives, NY	Collection:	Series.Folder:
	MoMA PS1	I.A.364

GERMANY

1974

EDITIONS CAMU

by Carl Camu

PAS DES BANDEROLES — DES FLEURS ROUGES



39a. Collage; 10.5x14.7 cm. w./two stamp images: black, grey, tan on white. Signed, numbered 1/15 and dated.

ROSA KAUFEN — ROSA KLEBEN



39b. Collage; 9.2x17.1 cm. w/envelope, two stamps and one stamp image; multicoloured. Signed, numbered 5/15 and dated.

The Museum of Modern Art Archives, NY	Collection:	Series.Folder:
	MoMA PS1	I.A.364

GERMANY

197__

OO SEX

by Klaus Burkhardt

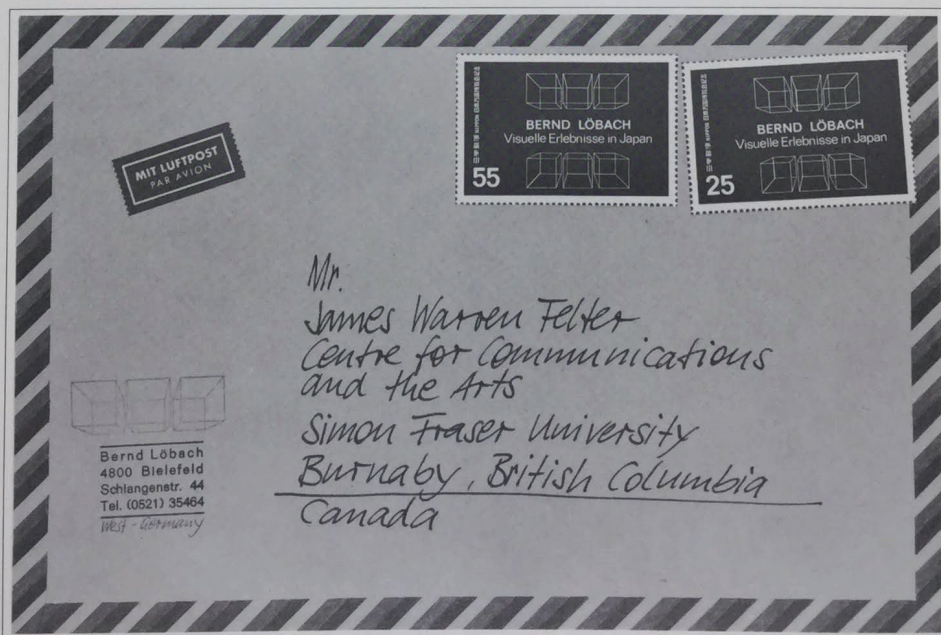


20. Gummed perforated stamp; single image 3.2x2.7 cm., orange, black on white. Full sheet of sixteen 16.4x11.3 cm.

1974

UNTITLED

by Bernd Lobach



40. Collage; 20x29.9 cm. w/envelope drawing and two stamp images, multicoloured.

The Museum of Modern Art Archives, NY	Collection:	Series.Folder:
	MoMA PS1	I.A.364

HUNGARY

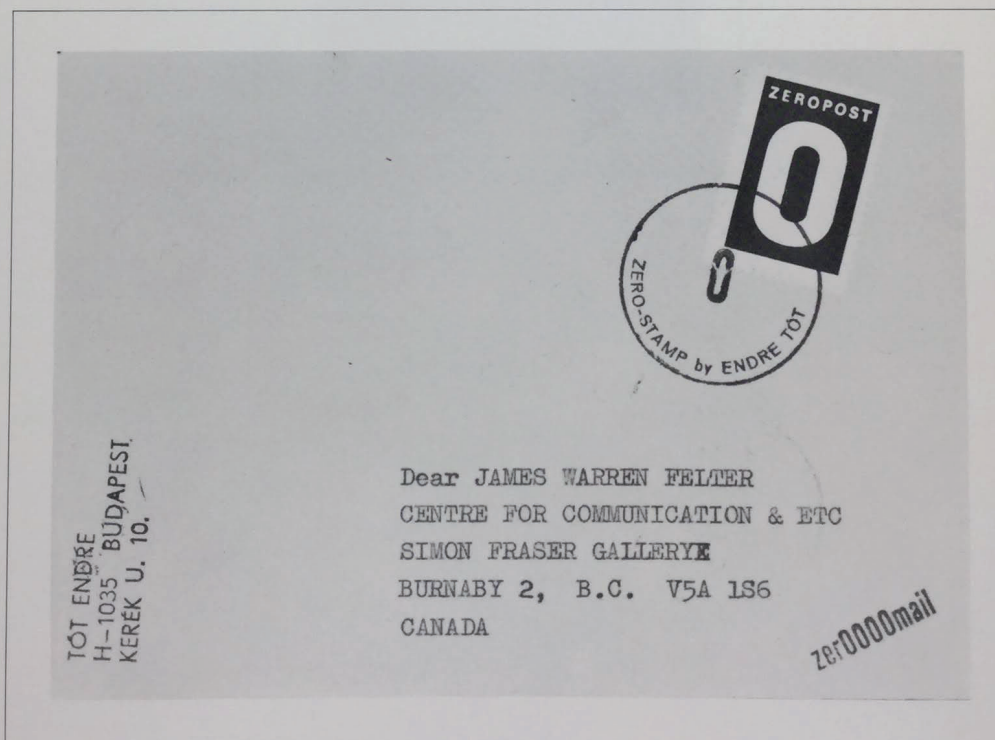
1974

ZEROPOST
by Endre Tot



30a. Gummed perforated stamp; single image 3.6x2.6 cm., black on white. Full sheet of forty-nine, 29.6 x 21 cm. Signed and numbered 52/100.

ZEROPOST — zerOOOOmail
by Endre Tot



30b. Collage w/envelope and Zeropost stamp; 11.5x16.1 cm., black, white on tan.
1. Cancelled by the artist.
2. Cancelled by the Budapest Post Office.

The Museum of Modern Art Archives, NY	Collection:	Series.Folder:
	MoMA PS1	I.A.364

JAPAN

1970

VISUAL EXPERIENCES IN JAPAN
by Bernd Lobach



9. Stamp image; four images 4.9x7.2 cm. each, black on white. Full sheet of block of four 15x19.9 cm.

The Museum of Modern Art Archives, NY	Collection:	Series.Folder:
	MoMA PS1	I.A.364

MEXICO

1974

BAJA
by Robert Fried



44. Gummed perforated 80 cts stamp; single image 3 x 4.9 cm., multicoloured. Full sheet of ninety-eight 55.7 x 43 cm. Signed and dated.

The Museum of Modern Art Archives, NY	Collection:	Series.Folder:
	MoMA PS1	I.A.364

APPROACHING GRAND TROP



A. 1 1/2P (eek) Ultramarine

LULA CLAY TO MICHAEL'S EAR



C. 2P Vermilion

NETHERLANDS

1973

TROPIDES ISLANDS

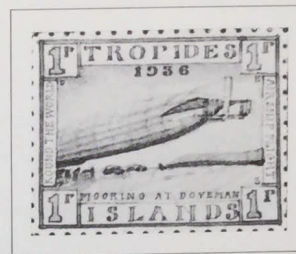
1936

ZEPPELIN VISIT

Donald Evans

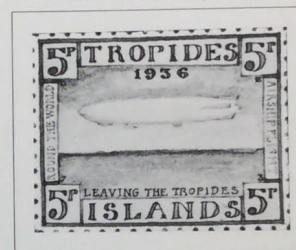
Postal paintings 3.4 x 4.2 cm. from the
Collection of the Artist, Amsterdam.

MOORING AT DOVEMAN



B. 1P Green

LEAVING THE TROPIDES



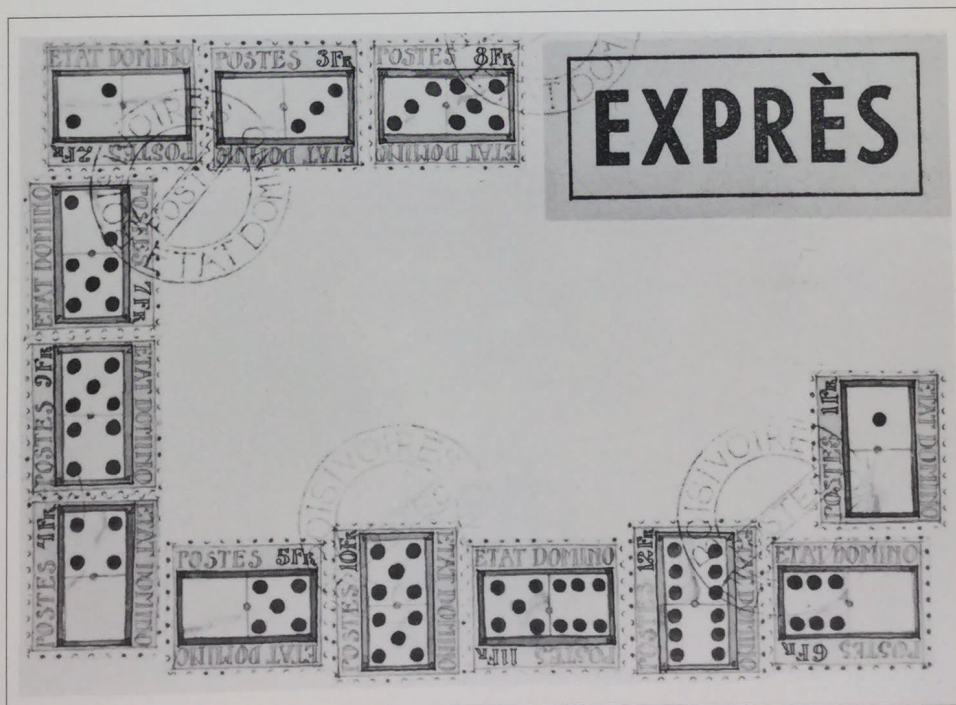
D. 5P Black

DOMINO

1928

DOMINOS

by Donald Evans



11. Envelope collage 10.6 x 15.3 cm. Postal painting series 1f(ranc) — 2f: grey-blue, light brown and black on express cover w/cancellation marks. Postal paintings 2.5 x 2 cm. each. From the Collection of the Artist, Amsterdam.

The Museum of Modern Art Archives, NY	Collection:	Series.Folder:
	MoMA PS1	I.A.364

NETHERLANDS

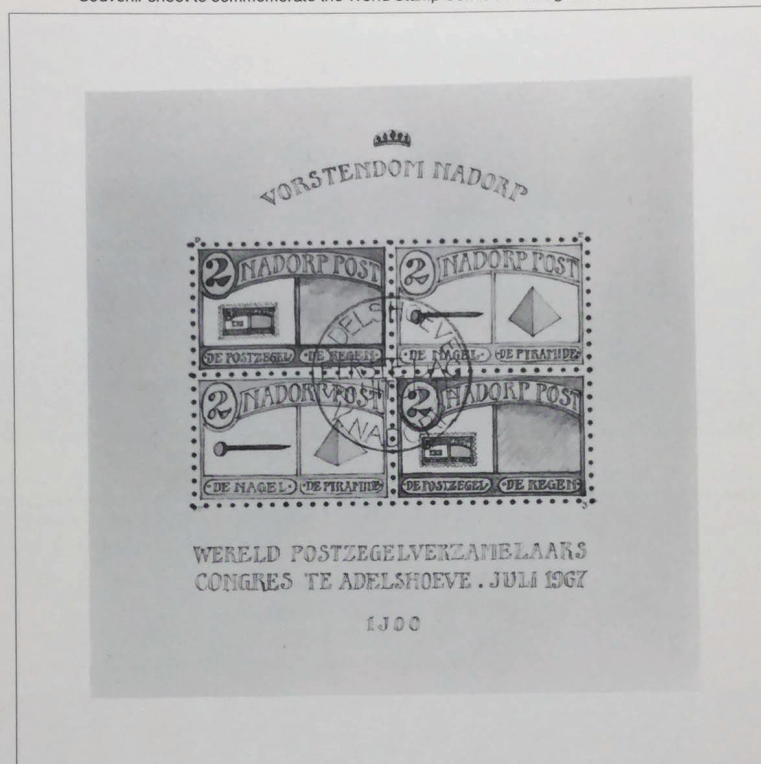
1973

NADORP

1967

by Donald Evans

Souvenir sheet to commemorate the World Stamp Collectors Congress at Adelshoeve



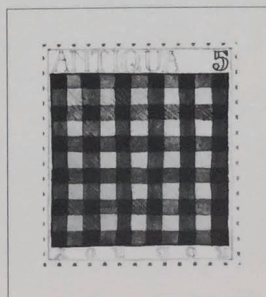
12. Two 2b(uis) postal paintings 2.5x3.7 cm. each. Full sheet of block of four 11.7x11.5 cm. of 1967 Vocabulary Issue: 'The Stamp/The Rain' green and grey alternating with 'The Nail/The Pyramid' yellow, light brown and black w/cancellation mark. From the Collection of the Artist, Amsterdam.

1974

ANTIQUA

1954

by Donald Evans



13. 5p(ence) postal painting. Single image 4x3.3 cm. red and black — Rob Roy tartan. Full sheet of twenty 20.9 x 14.6 cm. From the Collection of the Artist, Amsterdam.

The Museum of Modern Art Archives, NY	Collection:	Series.Folder:
	MoMA PS1	I.A.364

UNITED STATES OF AMERICA

1963

YAMFLUG 25W070630
by Robert Watts



45. Gummed perforated stamp; one hundred images 2.5x2.1 cm. each. Four full sheets of one hundred each: (a) blue on white, (b) green on white, (c) pink on white, (d) red on white; 27.8 x 21.5 cm. each.

1964

FLUXPOST DIY12W70640
by Robert Watts



31. Gummed perforated stamp; one hundred images 2.5x2.2 cm. each. Two full sheets of one hundred each: (a) blue on white, (b) black on white; 27.7 x 21.6 cm. each.

The Museum of Modern Art Archives, NY	Collection:	Series.Folder:
	MoMA PS1	I.A.364

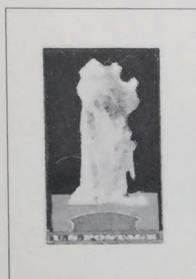
UNITED STATES OF AMERICA

1967

YOSEMITE # 21249

by Dana Atchley

#21279
by Dana Atchley



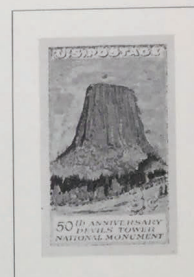
(a) single image 3.6x2.1 cm.
block of six 9.5x7.7 cm.



(b) single image 3.1 x 2.1 cm., block of six 7.5 x 7 cm.

32. Xeroxed stamp images; hand coloured

DEVIL'S TOWER # 25503
by Dana Atchley

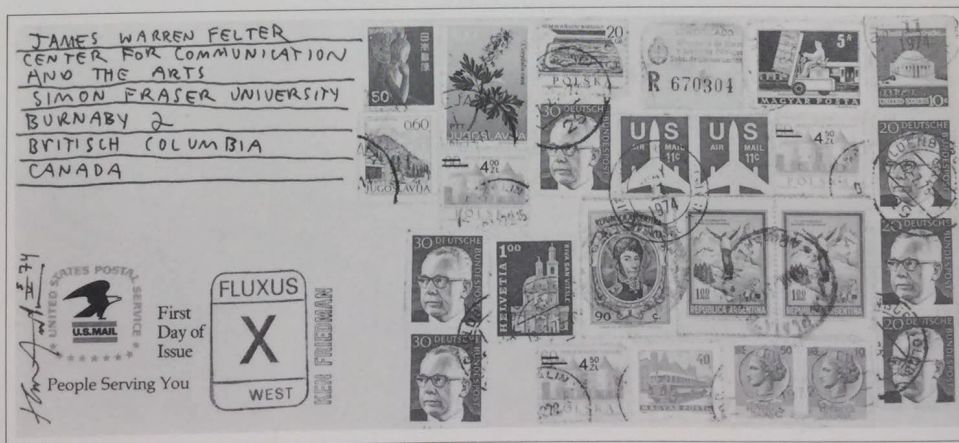


(c) single image 3.8x2.2 cm.
block of four 10.7x5.3 cm.

1968

UNTITLED 1968 RECONSTRUCTION

by Ken Friedman



15. Collage w/envelope and twenty-five stamps and stamp images; 11.5x26.2 cm. multicoloured.
Signed, dated and cancelled by San Diego Post Office.

The Museum of Modern Art Archives, NY	Collection:	Series.Folder:
	MoMA PS1	I.A.364

UNITED STATES OF AMERICA

1970

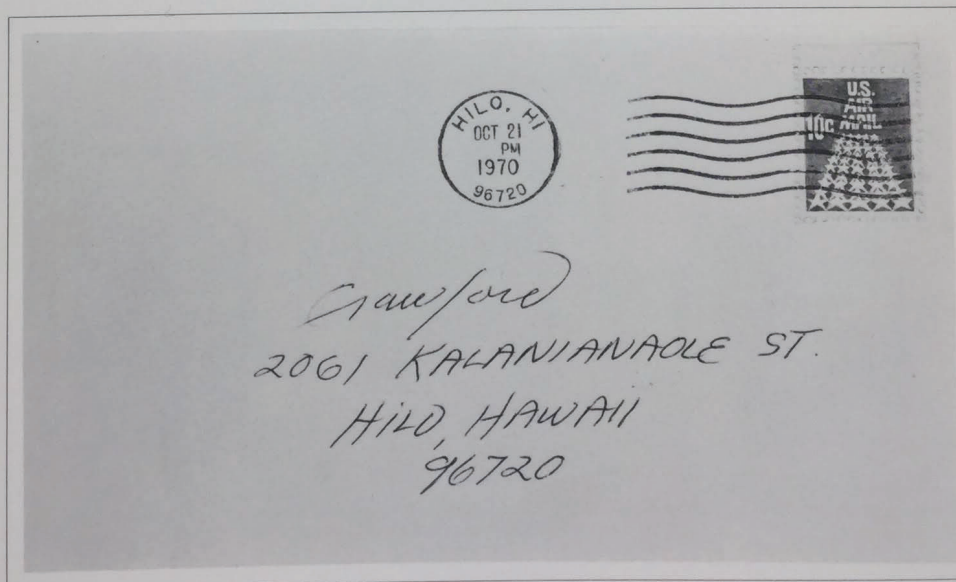
US XX

by William Farley



33. Gummed perforated stamp; single image 2.5 x 3 cm. black on white. Full sheet of sixty-four 27.8 x 21.5 cm. Numbered 1/50 and dated.
63. US XX: ungummed stamp sheet image; single image 6.7 x 5.5 cm. black on white. Full sheet of sixty-four 64 x 56 cm. Numbered 26I200, signed and dated 1970-74.

"10c U.S. AIR MAIL"
Anonymous



16. Postal painting; 3 x 2.2 cm. red and white. On envelope 9.2 x 16.4 cm. Cancelled by Hilo, Hawaii Post Office.

The Museum of Modern Art Archives, NY	Collection:	Series.Folder:
	MoMA PS1	I.A.364

UNITED STATES OF AMERICA

1971

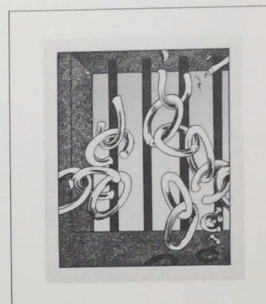
NON-NEGOTIABLE EIGHTS

by Robert Fried

BASEBALL DE BABYLON



SAVAGE SAFRON MEETS CHAIN



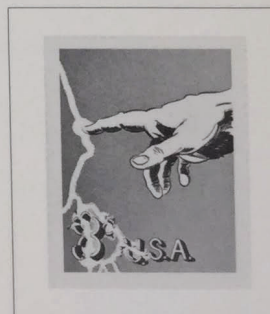
DYLAN'S DRIFTER



8 OF JUST ICE



BLUE PATENT ON ICE



59. Ungummed perforated stamps; five images 4.5x3.6 cm. each, multicoloured. Full sheet 55.8x71 cm. of five groups of ten each image. Signed, numbered 37/50 and dated. Cancelled by the artist.

The Museum of Modern Art Archives, NY	Collection:	Series.Folder:
	MoMA PS1	I.A.364

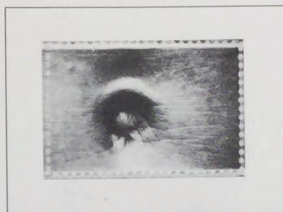
UNITED STATES OF AMERICA

1972

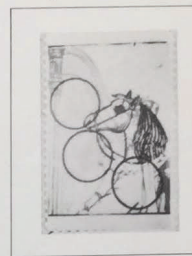
BUTTERFLY
by Pat Tavenner



NAVEL
by Pat Tavenner



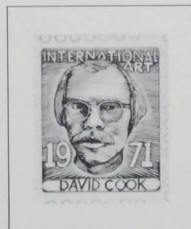
HORSE
by Pat Tavenner



34, 35a & b. Gummed perforated photo-stamp; single image 3.8x2.5 cm. black and white. Full sheet of fifty 19.1x25.1 cm.

1973

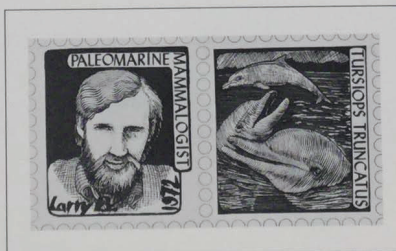
SELF-PORTRAIT
by David Cook



46. Ungummed stamp image 3.2x2.6 cm. Full sheet 44.4x57 cm. of single image in six groups of thirty each; purple to blue on white. Signed and numbered 90/100.

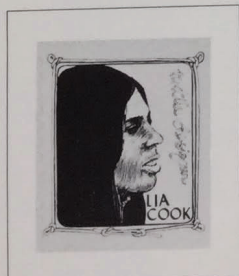
WORLD'S GREATEST PEOPLE SERIES
by David Cook

LARRY



47. Two ungummed stamp images 3.8x3.2 cm. each. Full sheet 44.4x57 cm. of seventy each image; blue to green on white. Signed, numbered 5/100 and dated.

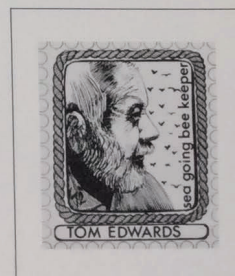
LIA



KRISHA



TOM



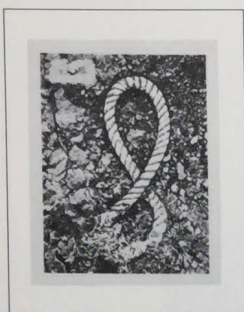
48, 49 & 50. Ungummed stamp images 3.8 x 3.2 cm. each. Three full sheets 44.4 x 57 cm. of one hundred and forty each.

The Museum of Modern Art Archives, NY	Collection:	Series.Folder:
	MoMA PS1	I.A.364

UNITED STATES OF AMERICA
1973

WESTERN EDITION
by Robert Fried

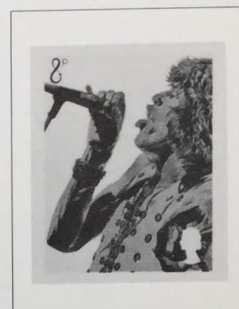
PRE-COLUMBIAN PROFILE



TATOOED MAP & TOURNIQUE

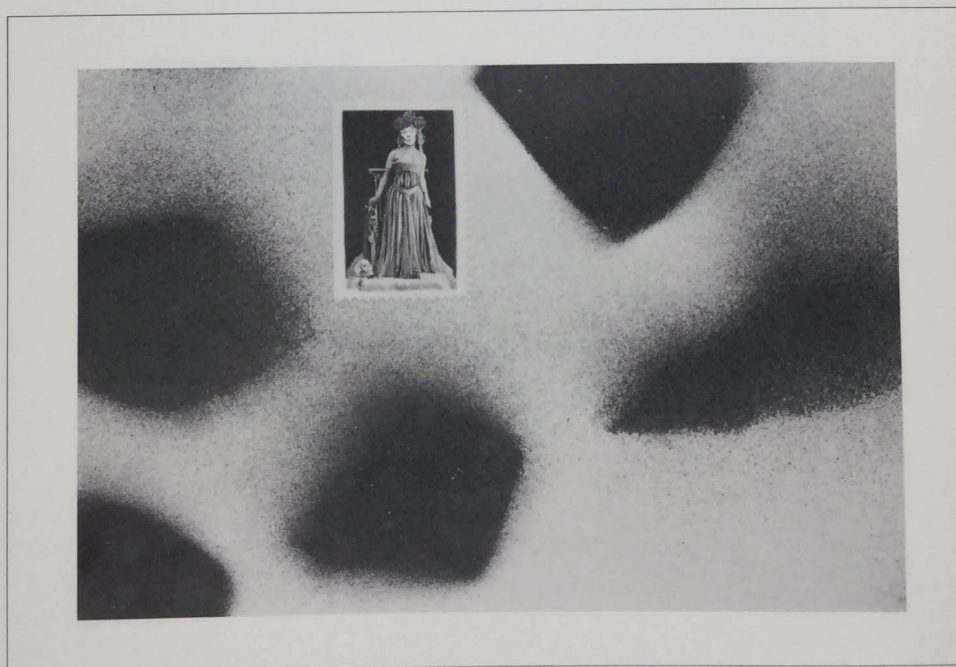


MONARCY MAN



60. Ungummed perforated stamps; three images 4.5x3.6 cm. each, multicoloured. Full sheet 55.2x71 cm. of three groups of forty-five each image. Signed, numbered 15/30 and dated. Cancelled by the artist.

STAMPCARDS
by May Wilson



52. Eight collages; each w/gummed perforated black and white photo-stamp 4 x 2.5 cm. on hand sprayed card 10.1 x 15.1 cm. black on white. Signed on back.

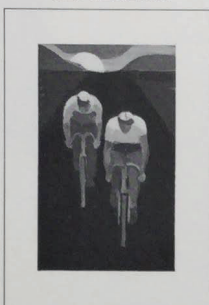
The Museum of Modern Art Archives, NY	Collection:	Series.Folder:
	MoMA PS1	I.A.364

UNITED STATES OF AMERICA

1973

POSTAL PAINTINGS
by Joel Smith

DEPRESSION



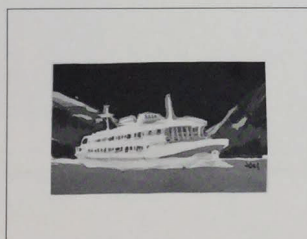
(a) Imperforate 4.3x2.5 cm.

BUCK



(b) Perforated 4x3 cm.

LINER



(c) Imperforate 2.4x4 cm.

SPEED SKATING



(d) Perforated 3.2x4.3 cm.

51. Four stamp images: acrylic on gummed paper, multicoloured. Signed.

The Museum of Modern Art Archives, NY	Collection:	Series.Folder:
	MoMA PS1	I.A.364

UNITED STATES OF AMERICA

1973

NOM DE PLUMES SERIES

by Pat Tavenner

(a) ARTIST



(b) ARTIST OF IDEAS



(c) ARTIST OF MANY MEDIA



(d) ARTIST OF UNKNOWN MEDIA



(e) MAIL QUEEN



(f) CHARM SCHOOL



61. Six gummed perforated photo stamps; single image 3.8x2.5 cm. black and white. Six full sheets 19.1x25.1 cm. of fifty each.

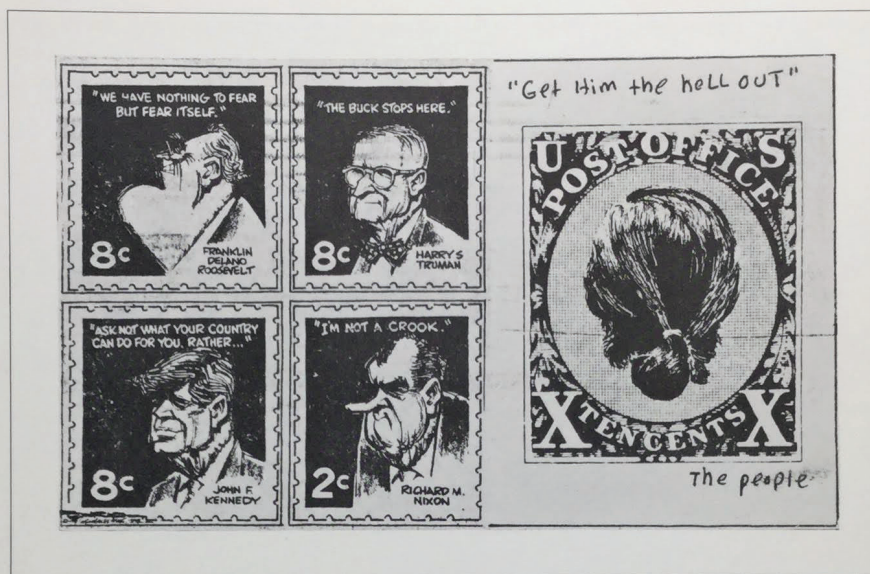
The Museum of Modern Art Archives, NY	Collection:	Series.Folder:
	MoMA PS1	I.A.364

UNITED STATES OF AMERICA

1973

GET HIM THE HELL OUT

by William Farley



17. Postcard 8.5 x 14 cm. w/five stamp images, black on white.

1974

FLUXPOST 1-42



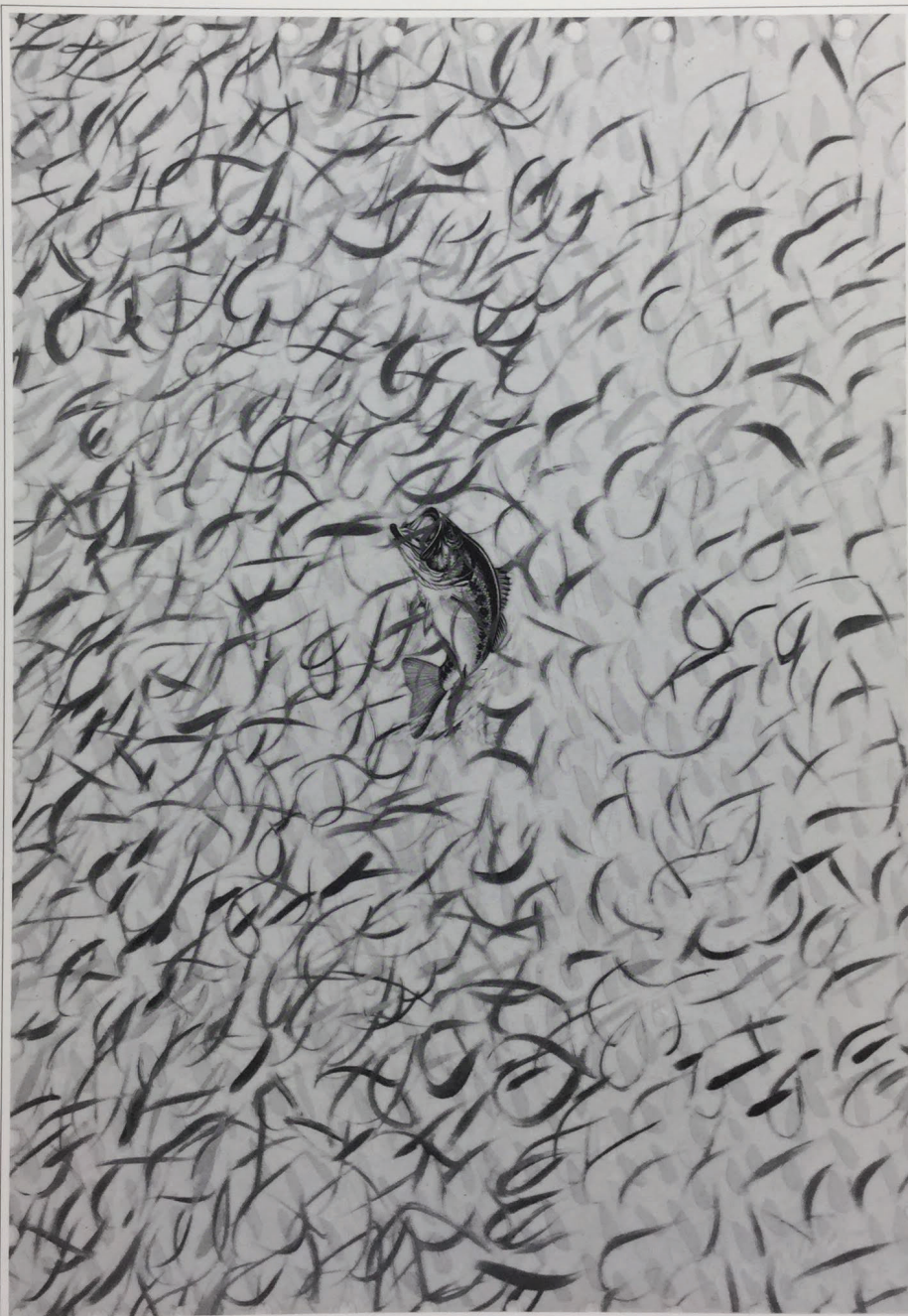
36. Gummed perforated stamp; forty-two images 4.6 x 3.1 cm. each, black on white. Full sheet of forty-two 28 x 21.5 cm.

The Museum of Modern Art Archives, NY	Collection:	Series.Folder:
	MoMA PS1	I.A.364

UNITED STATES OF AMERICA

1974

FISH STAMP
by Radford Thomas



65. Perforated stamp image; acrylic on vinyl w/decals 86x64 cm. Full sheet of block of four 43x32 cm. multicoloured. Signed and dated.

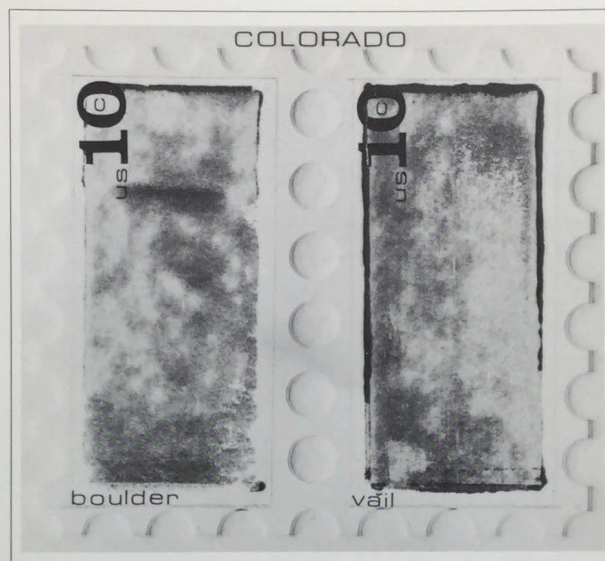
The Museum of Modern Art Archives, NY	Collection:	Series.Folder:
	MoMA PS1	I.A.364

UNITED STATES OF AMERICA

1974

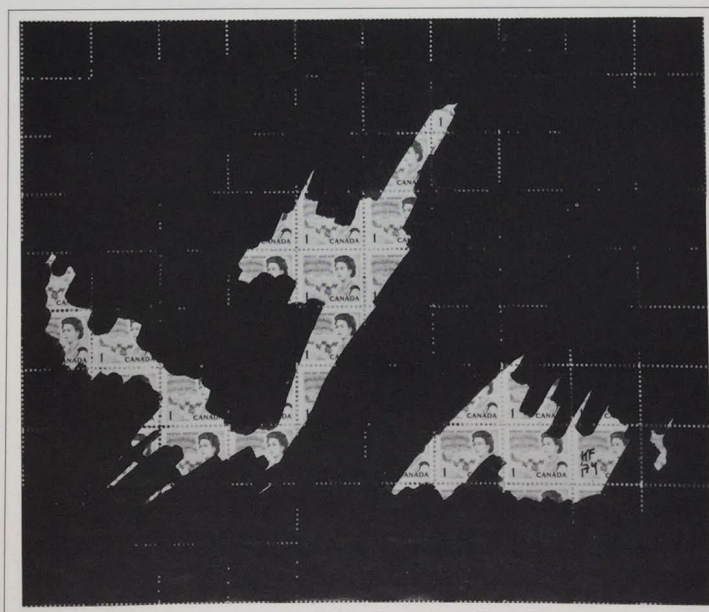
1974 STATE 1

by M. L. Heivly



62. Stamp image sheet with embossed perforation; six images 8.8x5.1 cm. each, brown, black on white. Full sheet of six 56x66 cm. Signed and dated.

"au canada"
by Ken Friedman



18 & 19. Perforated stamp sheets w/paint. Single stamp 2x2.5 cm. Two full sheets 21.6x25.6 cm. each, of 100 stamps each. (18) White on brown and white; (19) black on brown and white. Initialed and dated.

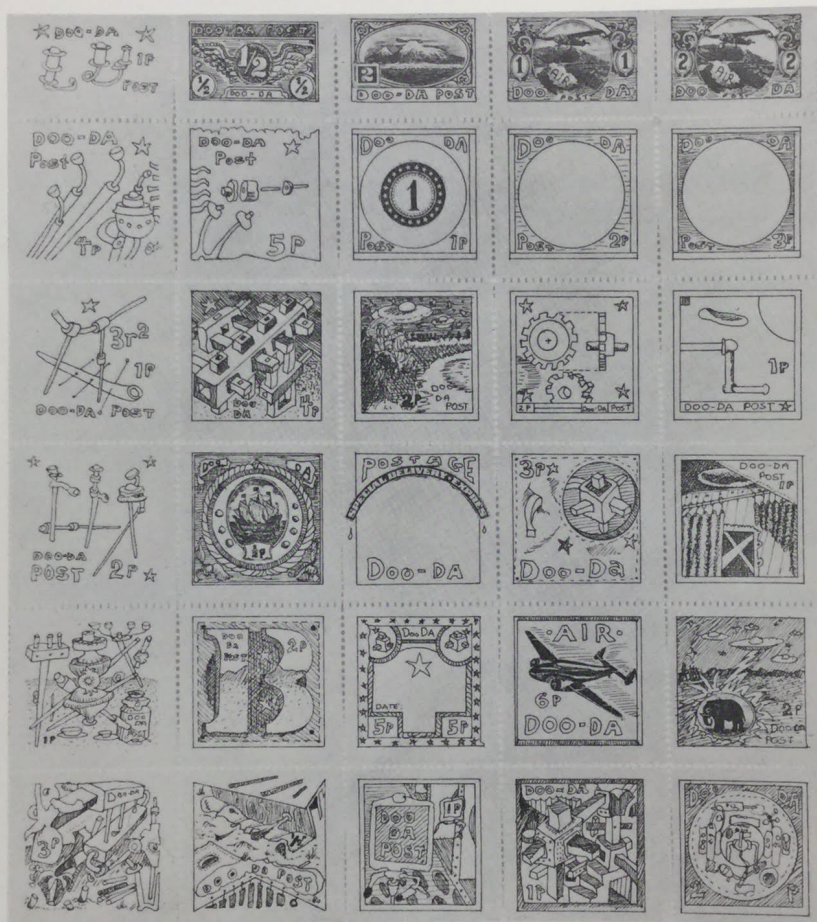
The Museum of Modern Art Archives, NY	Collection:	Series.Folder:
	MoMA PS1	I.A.364

UNITED STATES OF AMERICA

1975

DOO — DA STAMPS

by E. F. Higgins III



14. Ungummed perforated stamps; forty-two images varying from 2.4 x 3.6 cm. to 3.6 x 4.7 cm. black on tan. Full sheet 20.8 x 26.7 cm.

FOR STUDY PURPOSES ONLY. NOT FOR REPRODUCTION.

The Museum of Modern Art Archives, NY	Collection:	Series.Folder:
	MoMA PS1	I.A.364

ARTISTS' STAMPS AND STAMP IMAGES PRINTED IN CANADA © THE SIMON FRASER GALLERY SIMON FRASER UNIVERSITY

Catalogue concept: J. W. Felter
Photography: Audio Visual Department, Simon Fraser University
Typesetting and printing: Hemlock Printers Ltd., Burnaby, B.C.

Printed in Canada