

CONDITIONS OF USE FOR THIS PDF

The images contained within this PDF may be used for private study, scholarship, and research only. They may not be published in print, posted on the internet, or exhibited. They may not be donated, sold, or otherwise transferred to another individual or repository without the written permission of The Museum of Modern Art Archives.

When publication is intended, publication-quality images must be obtained from SCALA Group, the Museum's agent for licensing and distribution of images to outside publishers and researchers.

If you wish to quote any of this material in a publication, an application for permission to publish must be submitted to the MoMA Archives. This stipulation also applies to dissertations and theses. All references to materials should cite the archival collection and folder, and acknowledge "The Museum of Modern Art Archives, New York."

Whether publishing an image or quoting text, you are responsible for obtaining any consents or permissions which may be necessary in connection with any use of the archival materials, including, without limitation, any necessary authorizations from the copyright holder thereof or from any individual depicted therein.

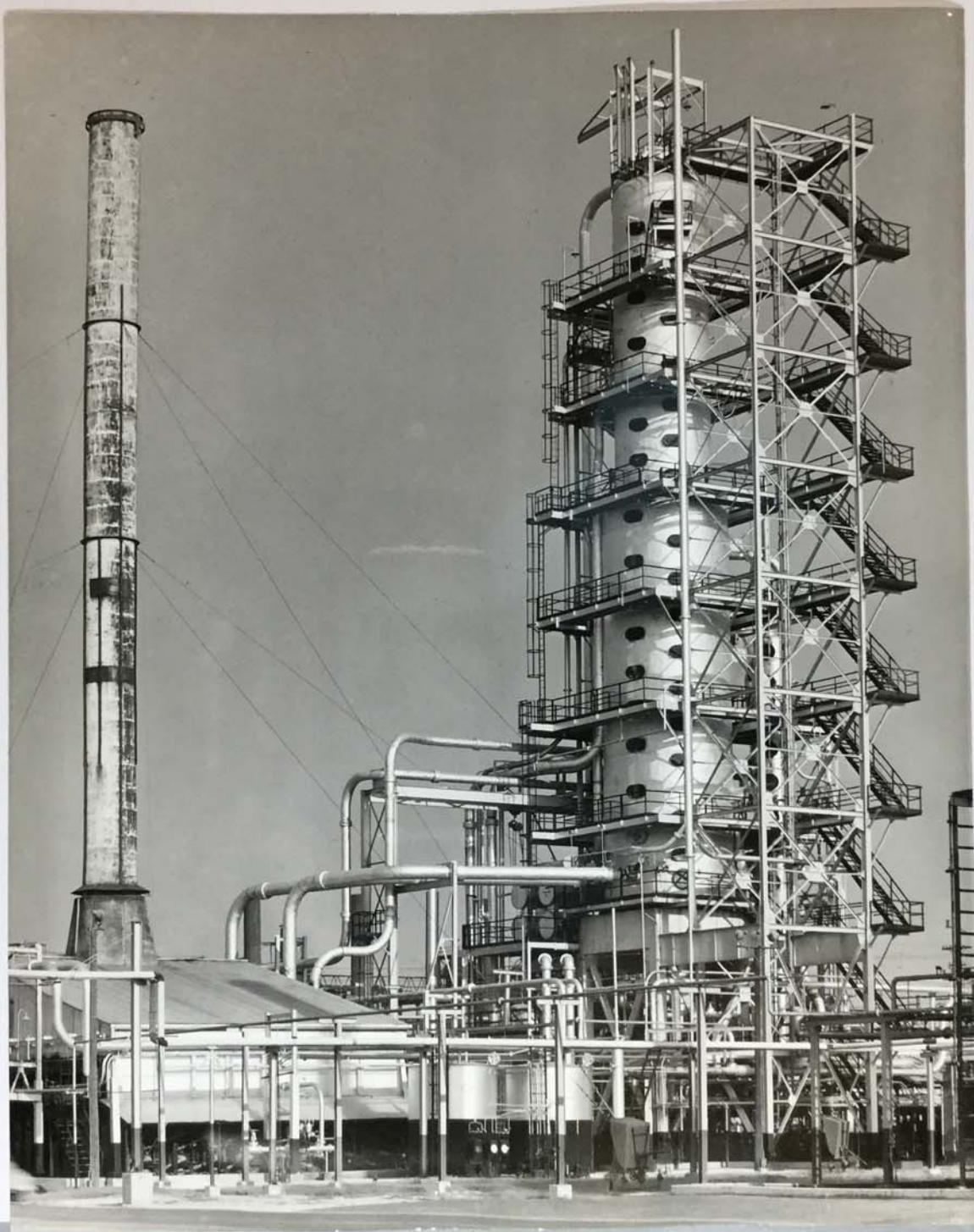
In requesting and accepting this reproduction, you are agreeing to indemnify and hold harmless The Museum of Modern Art, its agents and employees against all claims, demands, costs and expenses incurred by copyright infringement or any other legal or regulatory cause of action arising from the use of this material.

NOTICE: WARNING CONCERNING COPYRIGHT RESTRICTIONS

The copyright law of the United States (Title 17, United States Code) governs the making of photocopies or other reproductions of copyrighted material. Under certain conditions specified in the law, libraries and archives are authorized to furnish a photocopy or other reproduction. One of these specified conditions is that the photocopy or reproduction is not to be "used for any purpose other than private study, scholarship, or research." If a user makes a request for, or later uses, a photocopy or reproduction for purposes in excess of "fair use," that user may be liable for copyright infringement.

FOR STUDY PURPOSES ONLY. NOT FOR REPRODUCTION.

The Museum of Modern Art Archives, NY	Collection:	Series.Folder:
	MoMA Exhs.	744.209



FOR STUDY PURPOSES ONLY. NOT FOR REPRODUCTION.

The Museum of Modern Art Archives, NY	Collection:	Series.Folder:
	MoMA Exhs.	744.209

65631

Louisiana

65631 Atmospheric unit of No. 7 pipe still at the
Baton Rouge refinery of Esso Standard Oil Co.

PLEASE CREDIT
STANDARD OIL CO. (N. J.)

PLEASE RETURN UNUSED PHOTOS TO
STANDARD OIL CO. (N. J.)
PUBLIC RELATIONS DEPT.
30 ROCKEFELLER PLAZA
NEW YORK 20, N. Y.

FOR STUDY PURPOSES ONLY. NOT FOR REPRODUCTION.

The Museum of Modern Art Archives, NY	Collection:	Series.Folder:
	MoMA Exhs.	744.209



FOR STUDY PURPOSES ONLY. NOT FOR REPRODUCTION.

The Museum of Modern Art Archives, NY	Collection:	Series.Folder:
	MoMA Exhs.	744.209

65632

Louisiana

65632

Vacuum unit of #7 pipe still at the Baton Rouge refinery of Esso Standard Oil Co.

PLEASE CREDIT
STANDARD OIL CO. (N. J.)

PLEASE RETURN UNUSED PHOTOS TO
STANDARD OIL CO. (N. J.)
P.O. BOX 4040000000000000
30 JEFFERSON PLAZA
NEW YORK 20, N. Y.

FOR STUDY PURPOSES ONLY. NOT FOR REPRODUCTION.

The Museum of Modern Art Archives, NY	Collection:	Series.Folder:
	MoMA Exhs.	744.209



FOR STUDY PURPOSES ONLY. NOT FOR REPRODUCTION.

The Museum of Modern Art Archives, NY	Collection:	Series.Folder:
	MoMA Exhs.	744.209

65613

Louisiana

65613

Fluid catalytic cracking units at Baton Rouge refinery of Esso Standard Oil Co.

513

PLEASE CREDIT
STANDARD OIL CO. (N. J.)

PLEASE RETURN UNDEVELOPED PHOTOGRAPHS TO:
STANDARD OIL CO. (N. J.)
PUBLIC RELATIONS DEPT.
30 ROCKEFELLER PLACE
NEW YORK 20, N. Y.

FOR STUDY PURPOSES ONLY. NOT FOR REPRODUCTION.

The Museum of Modern Art Archives, NY	Collection:	Series.Folder:
	MoMA Exhs.	744.209



FOR STUDY PURPOSES ONLY. NOT FOR REPRODUCTION.

The Museum of Modern Art Archives, NY	Collection:	Series.Folder:
	MoMA Exhs.	744.209

7700

Plantation Pipeline Co.

7700

Baton Rouge, La. Field motor and field loop.
The field motor is used to empty the tank when
deliveries are made, and the field loop is used
as a by-pass when filling the tank.

00

PLEASE CREDIT
STANDARD OIL CO. (N. J.)

PLEASE RETURN UNUSED PHOTOS TO
STANDARD OIL CO. (N. J.)
PUBLIC RELATIONS DEPT.
30 ROCKAWAY PLACE
NEW YORK 20, N. Y.

FOR STUDY PURPOSES ONLY. NOT FOR REPRODUCTION.

The Museum of Modern Art Archives, NY	Collection:	Series.Folder:
	MoMA Exhs.	744.209



FOR STUDY PURPOSES ONLY. NOT FOR REPRODUCTION.

The Museum of Modern Art Archives, NY	Collection:	Series.Folder:
	MoMA Exhs.	744.209

60154

Esso Standard Oil Refinery
Baton Rouge, Louisiana

60154

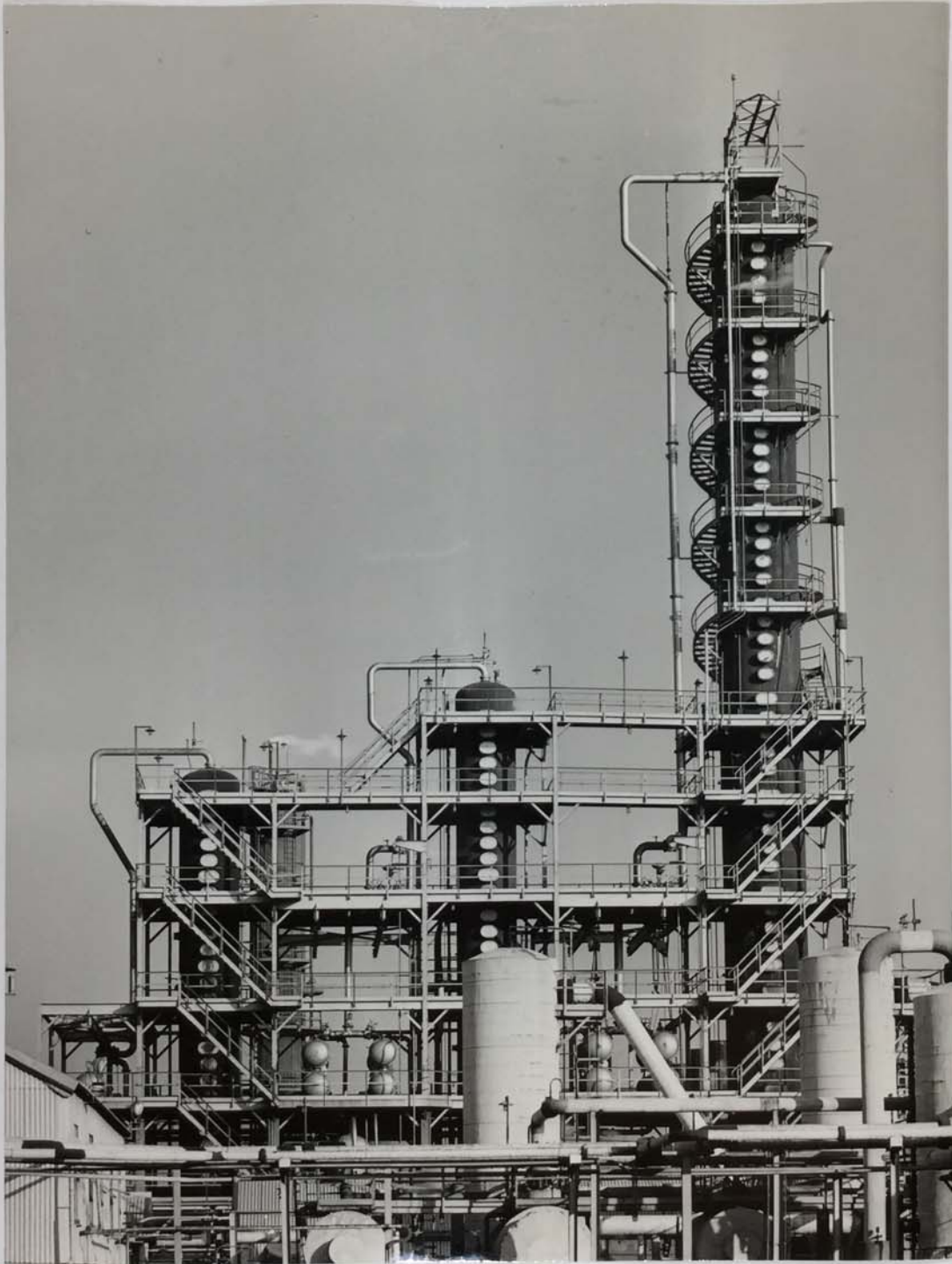
A light end feed stock sphere outlined by the night
lights of the butadiene distillation tower.

PLEASE CREDIT
STANDARD OIL CO. (N. J.)

PLEASE RETURN UNFINISHED PHOTOS TO
STANDARD OIL CO. (N. J.)
PUBLIC RELATIONS DEPT.
30 ROCKEFELLER PLAZA
NEW YORK 20, N. Y.

FOR STUDY PURPOSES ONLY. NOT FOR REPRODUCTION.

The Museum of Modern Art Archives, NY	Collection:	Series.Folder:
	MoMA Exhs.	744.209



FOR STUDY PURPOSES ONLY. NOT FOR REPRODUCTION.

The Museum of Modern Art Archives, NY	Collection:	Series.Folder:
	MoMA Exhs.	744.209

Baton Rouge La.
Baton Rouge Refinery

810

One unit of the alkylation plant.

PLEASE CREDIT
STANDARD OIL CO. (N. J.)

810

PLEASE RETURN UNUSED PHOTOS TO
STANDARD OIL CO. (N. J.)
P.O. BOX 1000
30 HENRIEVILLE ST.
NEW YORK, N. Y.

810

FOR STUDY PURPOSES ONLY. NOT FOR REPRODUCTION.

The Museum of Modern Art Archives, NY	Collection:	Series.Folder:
	MoMA Exhs.	744.209



FOR STUDY PURPOSES ONLY. NOT FOR REPRODUCTION.

The Museum of Modern Art Archives, NY	Collection:	Series.Folder:
	MoMA Exhs.	744.209

37843

Baytown, Texas Refinery
Humble Oil & Refining Co.

37843

Maze of pipes near the phenol treating plant

PLEASE CREDIT
STANDARD OIL CO. (N. J.)

37843

PLEASE RETURN UNMISSED PHOTOS TO
STANDARD OIL CO. (N. J.)
PUBLIC RELATIONS DEPT.
30 ROCKAWAY PLACE
NEW YORK 20, N. Y.

FOR STUDY PURPOSES ONLY. NOT FOR REPRODUCTION.

The Museum of Modern Art Archives, NY	Collection:	Series.Folder:
	MoMA Exhs.	744.209



FOR STUDY PURPOSES ONLY. NOT FOR REPRODUCTION.

The Museum of Modern Art Archives, NY	Collection:	Series.Folder:
	MoMA Exhs.	744.209

67830

Baytown, Texas, refinery of
Humble Oil and Refining Co.

67830 Pipes at one of the reactors on the hydroformer
unit.

67830
PLEASE CREDIT
STANDARD OIL CO. (N. J.)

PLEASE RETURN UNUSED PHOTOS TO
STANDARD OIL CO. (N. J.)
ATTENTION: ARCHIVES DEPT.
300 W. 42ND ST. PLAZA
NEW YORK 36, N. Y.

FOR STUDY PURPOSES ONLY. NOT FOR REPRODUCTION.

The Museum of Modern Art Archives, NY	Collection:	Series.Folder:
	MoMA Exhs.	744.209



FOR STUDY PURPOSES ONLY. NOT FOR REPRODUCTION.

The Museum of Modern Art Archives, NY	Collection:	Series.Folder:
	MoMA Exhs.	744.209

67827

Baytown, Texas, refinery of
Humble Oil and Refining Co.

67827 Butadiene plant. Exchanger on dehydrogenation
unit B.

67827

PLEASE CREDIT
STANDARD OIL CO. (N. J.)

PLEASE RETURN UNUSED PHOTOS TO
STANDARD OIL CO. (N. J.)
PUBLIC RELATIONS DEPT.
30 ROCKEFELLER PLAZA
NEW YORK 20, N. Y.

FOR STUDY PURPOSES ONLY. NOT FOR REPRODUCTION.

The Museum of Modern Art Archives, NY	Collection:	Series.Folder:
	MoMA Exhs.	744.209



FOR STUDY PURPOSES ONLY. NOT FOR REPRODUCTION.

The Museum of Modern Art Archives, NY	Collection:	Series.Folder:
	MoMA Exhs.	744.209

copy set 2277 # 69

PLEASE CREDIT
STANDARD OIL CO. (N. J.)

2277-69

PLEASE RETURN UNUSHD. PHOTOS TO
STANDARD OIL CO. (N. J.)
FURN. DEPARTMENT, 100 E.
40 ST. NEW YORK 17, N. Y.

FOR STUDY PURPOSES ONLY. NOT FOR REPRODUCTION.

The Museum of Modern Art Archives, NY	Collection:	Series.Folder:
	MoMA Exhs.	744.209



FOR STUDY PURPOSES ONLY. NOT FOR REPRODUCTION.

The Museum of Modern Art Archives, NY	Collection:	Series.Folder:
	MoMA Exhs.	744.209

68828

New Jersey Turnpike

68828 Steel beam piles being driven for overpass
supports near Jersey City, N. J.

68828

PLEASE CREDIT
STANDARD OIL CO. (N. J.)

PLEASE RETURN UNFINISHED PHOTOS TO
STANDARD OIL CO. (N. J.)
PUBLIC RELATIONS DEPT.
30 ROCKEFELLER PLAZA
NEW YORK 20, N. Y.

FOR STUDY PURPOSES ONLY. NOT FOR REPRODUCTION.

The Museum of Modern Art Archives, NY	Collection:	Series.Folder:
	MoMA Exhs.	744.209



FOR STUDY PURPOSES ONLY. NOT FOR REPRODUCTION.

The Museum of Modern Art Archives, NY	Collection:	Series.Folder:
	MoMA Exhs.	744.209

32729

Talara, Peru

32729

Filling gasoline drums on scales to insure correct volume. International bulk plant.

PLEASE CREDIT
STANDARD OIL CO. (N. J.)

PLEASE RETURN UNRISKO PHOTOS TO
STANDARD OIL CO. (N. J.)
PUBLIC RELATIONS DEPT.
30 ROCKEFELLER PLAZA
NEW YORK 20, N. Y.