

## CONDITIONS OF USE FOR THIS PDF

The images contained within this PDF may be used for private study, scholarship, and research only. They may not be published in print, posted on the internet, or exhibited. They may not be donated, sold, or otherwise transferred to another individual or repository without the written permission of The Museum of Modern Art Archives.

When publication is intended, publication-quality images must be obtained from SCALA Group, the Museum's agent for licensing and distribution of images to outside publishers and researchers.

If you wish to quote any of this material in a publication, an application for permission to publish must be submitted to the MoMA Archives. This stipulation also applies to dissertations and theses. All references to materials should cite the archival collection and folder, and acknowledge "The Museum of Modern Art Archives, New York."

Whether publishing an image or quoting text, you are responsible for obtaining any consents or permissions which may be necessary in connection with any use of the archival materials, including, without limitation, any necessary authorizations from the copyright holder thereof or from any individual depicted therein.

In requesting and accepting this reproduction, you are agreeing to indemnify and hold harmless The Museum of Modern Art, its agents and employees against all claims, demands, costs and expenses incurred by copyright infringement or any other legal or regulatory cause of action arising from the use of this material.

### **NOTICE: WARNING CONCERNING COPYRIGHT RESTRICTIONS**

The copyright law of the United States (Title 17, United States Code) governs the making of photocopies or other reproductions of copyrighted material. Under certain conditions specified in the law, libraries and archives are authorized to furnish a photocopy or other reproduction. One of these specified conditions is that the photocopy or reproduction is not to be "used for any purpose other than private study, scholarship, or research." If a user makes a request for, or later uses, a photocopy or reproduction for purposes in excess of "fair use," that user may be liable for copyright infringement.

FOR STUDY PURPOSES ONLY. NOT FOR REPRODUCTION.

The Museum of Modern Art Archives, NY	Collection:	Series.Folder:
	MoMA Exhs.	1498.39

Kiefer  
Installation

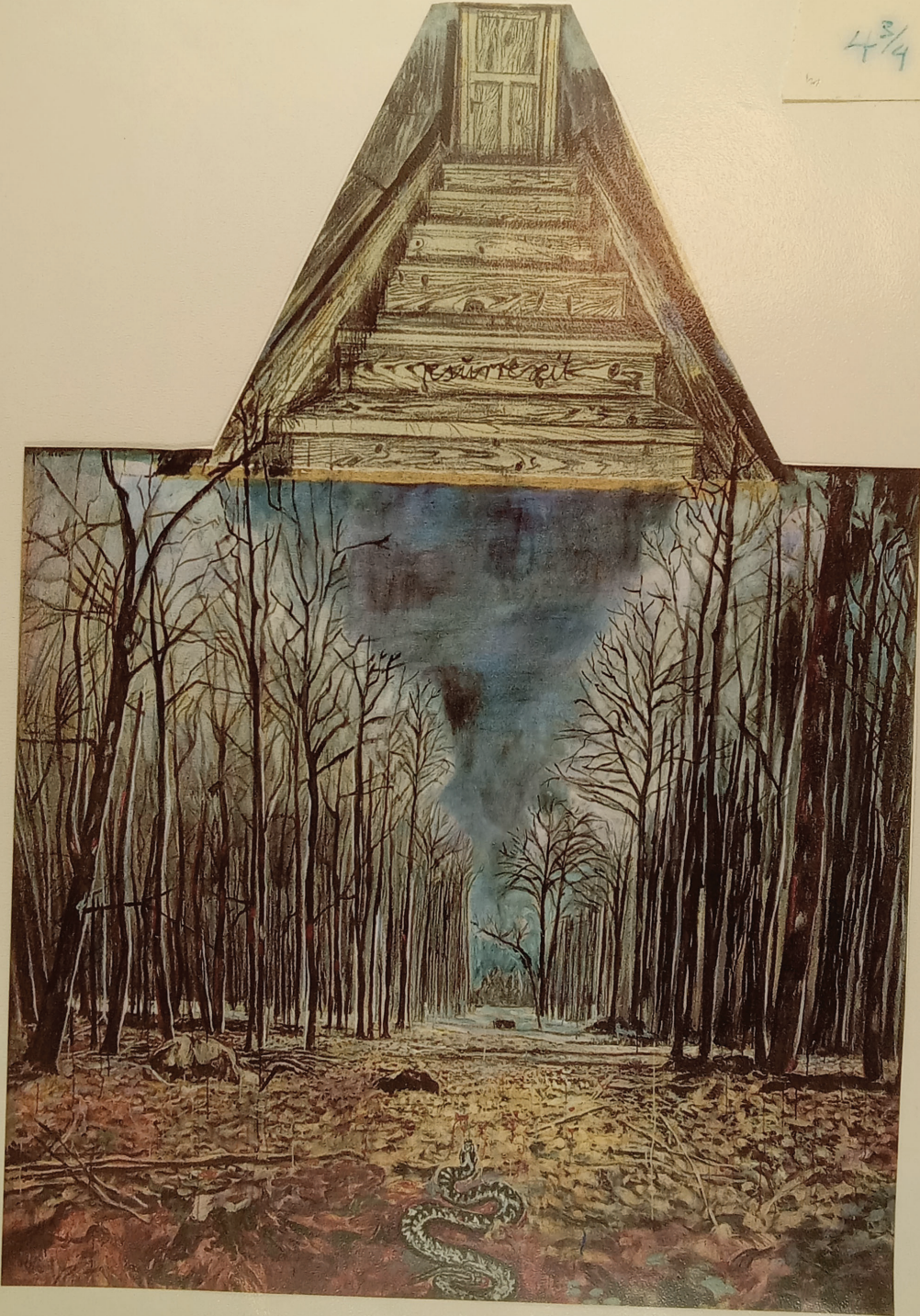
39 1/2  
3 2 1/2  
16



FOR STUDY PURPOSES ONLY. NOT FOR REPRODUCTION.

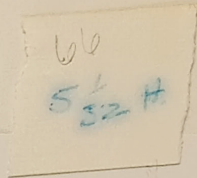
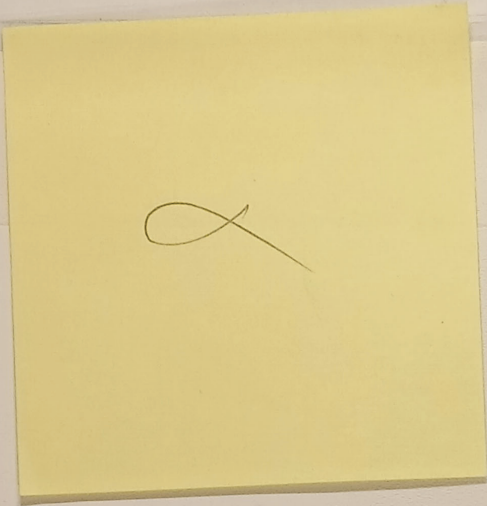
The Museum of Modern Art Archives, NY	Collection:	Series.Folder:
	MoMA Exhs.	1498.39

49  
4 3/4 H.



FOR STUDY PURPOSES ONLY. NOT FOR REPRODUCTION.

The Museum of Modern Art Archives, NY	Collection:	Series.Folder:
	MoMA Exhs.	1498.39



FOR STUDY PURPOSES ONLY. NOT FOR REPRODUCTION.

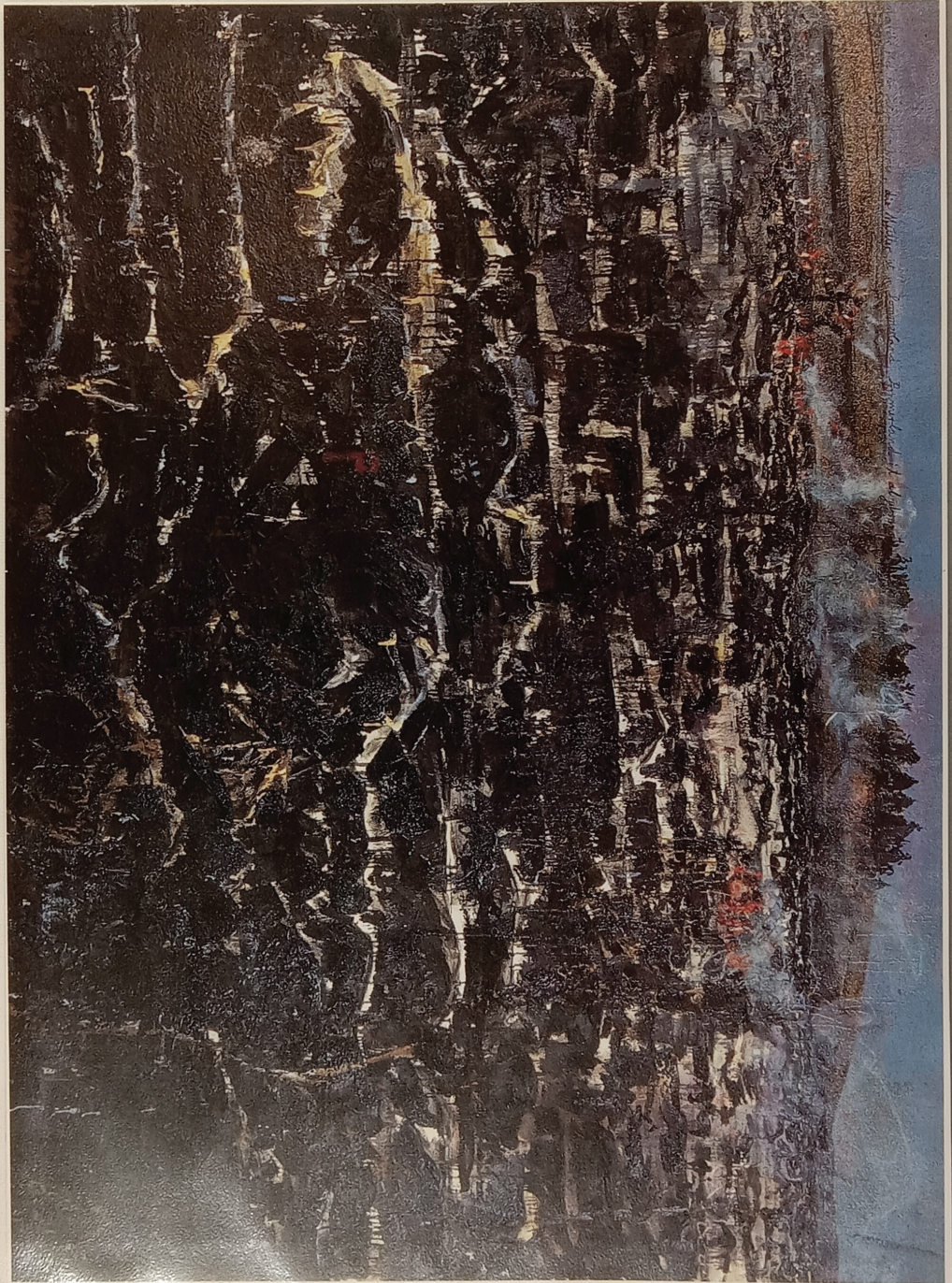
The Museum of Modern Art Archives, NY	Collection:	Series.Folder:
	MoMA Exhs.	1498.39



FOR STUDY PURPOSES ONLY. NOT FOR REPRODUCTION.

The Museum of Modern Art Archives, NY	Collection:	Series.Folder:
	MoMA Exhs.	1498.39

35 56  
2 H



FOR STUDY PURPOSES ONLY. NOT FOR REPRODUCTION.

The Museum of Modern Art Archives, NY	Collection:	Series.Folder:
	MoMA Exhs.	1498.39



46  
1 15  
16 H

FOR STUDY PURPOSES ONLY. NOT FOR REPRODUCTION.

The Museum of Modern Art Archives, NY	Collection:	Series.Folder:
	MoMA Exhs.	1498.39



FOR STUDY PURPOSES ONLY. NOT FOR REPRODUCTION.

The Museum of Modern Art Archives, NY	Collection:	Series.Folder:
	MoMA Exhs.	1498.39

97  
54

2



FOR STUDY PURPOSES ONLY. NOT FOR REPRODUCTION.

The Museum of Modern Art Archives, NY	Collection:	Series.Folder:
	MoMA Exhs.	1498.39

4/2  
4 1/2 A.



FOR STUDY PURPOSES ONLY. NOT FOR REPRODUCTION.

The Museum of Modern Art Archives, NY	Collection:	Series.Folder:
	MoMA Exhs.	1498.39



Willems door Welt weisheit die Kormannij - Schlicht

5/4 H  
102



FOR STUDY PURPOSES ONLY. NOT FOR REPRODUCTION.

The Museum of Modern Art Archives, NY	Collection:	Series.Folder:
	MoMA Exhs.	1498.39



FOR STUDY PURPOSES ONLY. NOT FOR REPRODUCTION.

The Museum of Modern Art Archives, NY	Collection:	Series.Folder:
	MoMA Exhs.	1498.39

66  
4 3/4 H.



FOR STUDY PURPOSES ONLY. NOT FOR REPRODUCTION.

The Museum of Modern Art Archives, NY	Collection:	Series.Folder:
	MoMA Exhs.	1498.39

31.5  
2 1/8 H



FOR STUDY PURPOSES ONLY. NOT FOR REPRODUCTION.

The Museum of Modern Art Archives, NY	Collection:	Series.Folder:
	MoMA Exhs.	1498.39



58  
4 1/2 ft

FOR STUDY PURPOSES ONLY. NOT FOR REPRODUCTION.

The Museum of Modern Art Archives, NY	Collection:	Series.Folder:
	MoMA Exhs.	1498.39



FOR STUDY PURPOSES ONLY. NOT FOR REPRODUCTION.

The Museum of Modern Art Archives, NY	Collection:	Series.Folder:
	MoMA Exhs.	1498.39



FOR STUDY PURPOSES ONLY. NOT FOR REPRODUCTION.

The Museum of Modern Art Archives, NY	Collection:	Series.Folder:
	MoMA Exhs.	1498.39

4 2/10 77



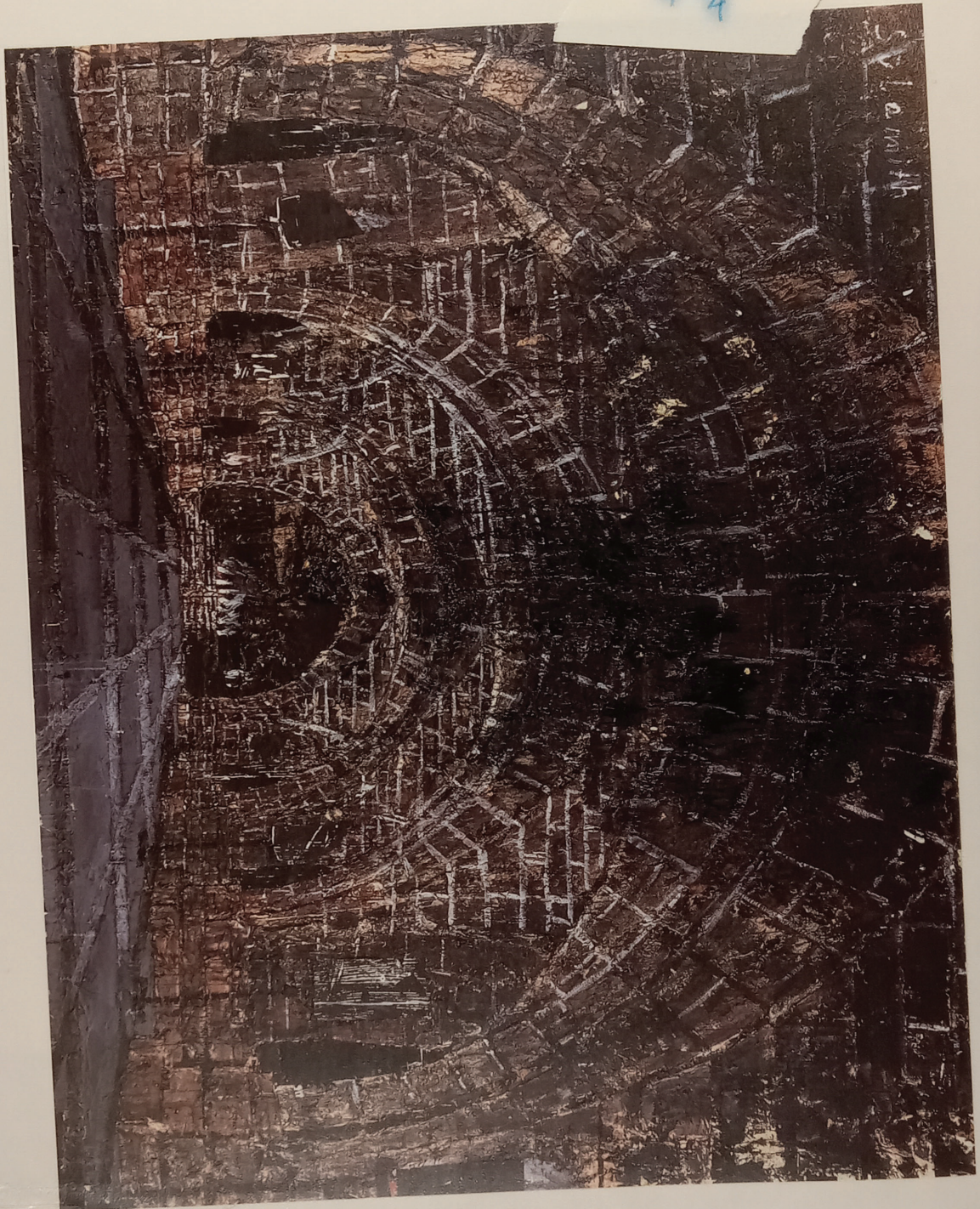
FOR STUDY PURPOSES ONLY. NOT FOR REPRODUCTION.

The Museum of Modern Art Archives, NY	Collection:	Series.Folder:
	MoMA Exhs.	1498.39



FOR STUDY PURPOSES ONLY. NOT FOR REPRODUCTION.

The Museum of Modern Art Archives, NY	Collection:	Series.Folder:
	MoMA Exhs.	1498.39



FOR STUDY PURPOSES ONLY. NOT FOR REPRODUCTION.

The Museum of Modern Art Archives, NY	Collection:	Series.Folder:
	MoMA Exhs.	1498.39

60  
4 9/16 H



FOR STUDY PURPOSES ONLY. NOT FOR REPRODUCTION.

The Museum of Modern Art Archives, NY	Collection:	Series.Folder:
	MoMA Exhs.	1498.39

40  
4 9/16



FOR STUDY PURPOSES ONLY. NOT FOR REPRODUCTION.

The Museum of Modern Art Archives, NY	Collection:	Series.Folder:
	MoMA Exhs.	1498.39



FOR STUDY PURPOSES ONLY. NOT FOR REPRODUCTION.

The Museum of Modern Art Archives, NY	Collection:	Series.Folder:
	MoMA Exhs.	1498.39

22

*[Faint, illegible text on a yellow sticky note]*

FOR STUDY PURPOSES ONLY. NOT FOR REPRODUCTION.

The Museum of Modern Art Archives, NY	Collection:	Series.Folder:
	MoMA Exhs.	1498.39

Plate 73  
*Palette with Wings*, 1985  
*Palette mit Flügeln*  
Lead, steel, and tin  
110<sup>1</sup>/<sub>4</sub> x 137<sup>3</sup>/<sub>4</sub> x 39<sup>3</sup>/<sub>8</sub>" (280 x 350 x  
100 cm) (approximate)  
Private Collection

FOR STUDY PURPOSES ONLY. NOT FOR REPRODUCTION.

The Museum of Modern Art Archives, NY	Collection:	Series.Folder:
	MoMA Exhs.	1498.39



106  
5 2  
16



FOR STUDY PURPOSES ONLY. NOT FOR REPRODUCTION.

The Museum of Modern Art Archives, NY	Collection:	Series.Folder:
	MoMA Exhs.	1498.39

105  
6 1/4 H.



FOR STUDY PURPOSES ONLY. NOT FOR REPRODUCTION.

The Museum of Modern Art Archives, NY	Collection:	Series.Folder:
	MoMA Exhs.	1498.39

71  
3 5/8 11



FOR STUDY PURPOSES ONLY. NOT FOR REPRODUCTION.

The Museum of Modern Art Archives, NY	Collection:	Series.Folder:
	MoMA Exhs.	1498.39



FOR STUDY PURPOSES ONLY. NOT FOR REPRODUCTION.

The Museum of Modern Art Archives, NY	Collection:	Series.Folder:
	MoMA Exhs.	1498.39



FOR STUDY PURPOSES ONLY. NOT FOR REPRODUCTION.

The Museum of Modern Art Archives, NY	Collection:	Series.Folder:
	MoMA Exhs.	1498.39

WORKS ON PAPER

FOR STUDY PURPOSES ONLY. NOT FOR REPRODUCTION.

The Museum of Modern Art Archives, NY	Collection:	Series.Folder:
	MoMA Exhs.	1498.39

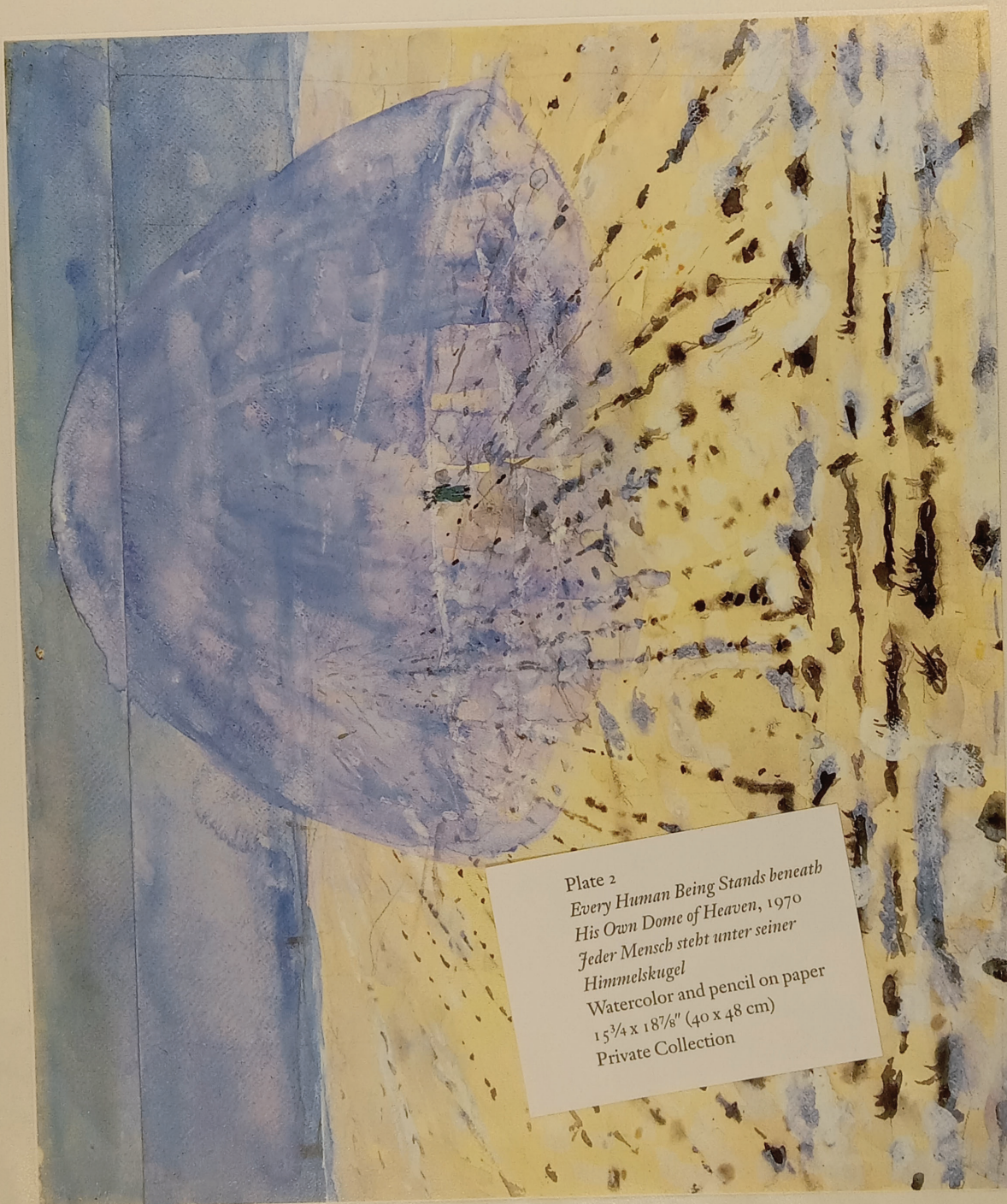


Plate 2  
*Every Human Being Stands beneath  
His Own Dome of Heaven, 1970*  
*Jeder Mensch steht unter seiner  
Himmelskugel*  
Watercolor and pencil on paper  
15<sup>3</sup>/<sub>4</sub> x 18<sup>7</sup>/<sub>8</sub>" (40 x 48 cm)  
Private Collection

FOR STUDY PURPOSES ONLY. NOT FOR REPRODUCTION.

The Museum of Modern Art Archives, NY	Collection:	Series.Folder:
	MoMA Exhs.	1498.39



Plate 3  
*Winter Landscape*, 1970  
*Winterlandschaft*  
Watercolor on paper  
16<sup>5</sup>/<sub>16</sub> x 14<sup>3</sup>/<sub>16</sub>" (43 x 36 cm)  
Private Collection

FOR STUDY PURPOSES ONLY. NOT FOR REPRODUCTION.

The Museum of Modern Art Archives, NY	Collection:	Series.Folder:
	MoMA Exhs.	1498.39

2 3/8 35



FOR STUDY PURPOSES ONLY. NOT FOR REPRODUCTION.

The Museum of Modern Art Archives, NY	Collection:	Series.Folder:
	MoMA Exhs.	1498.39

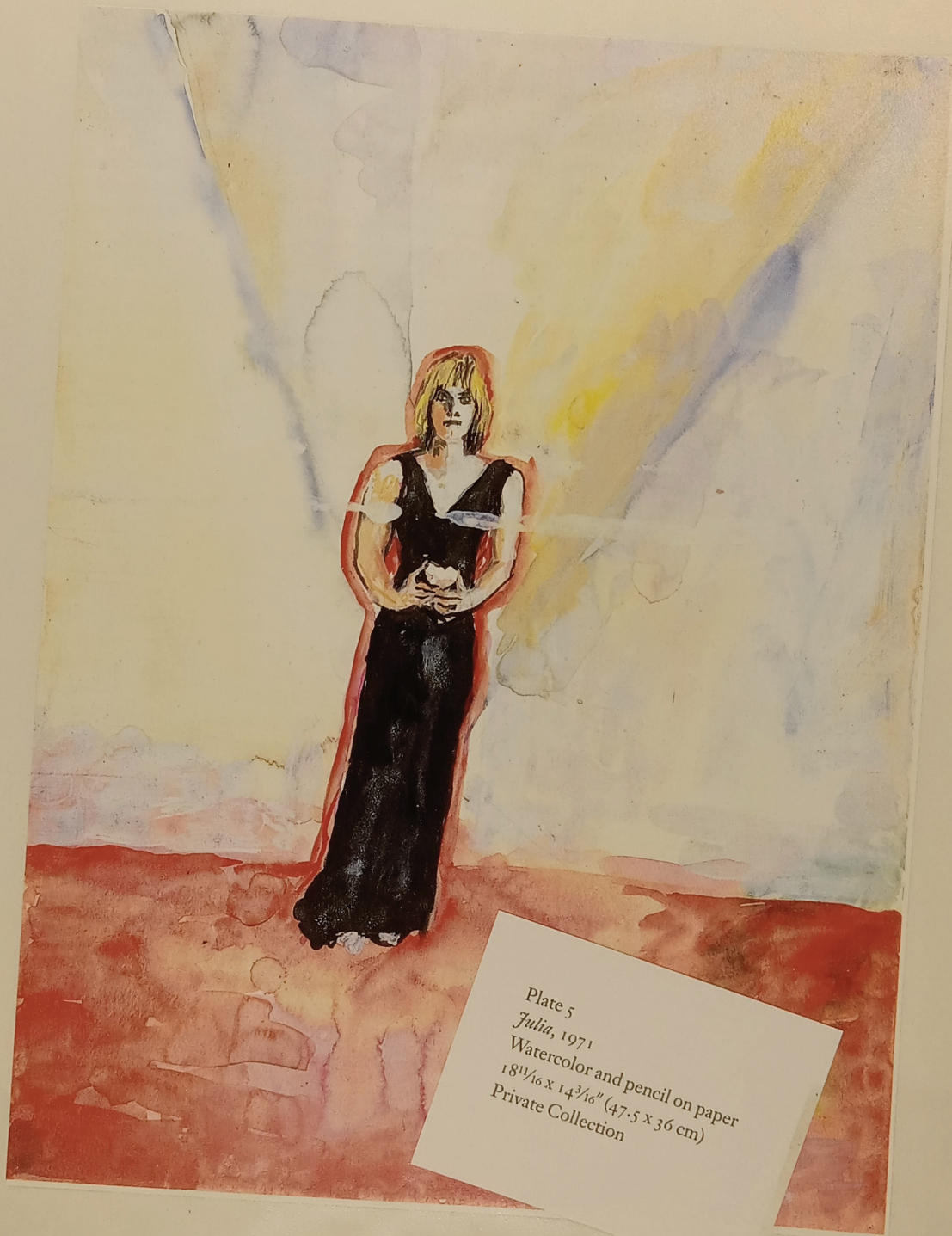
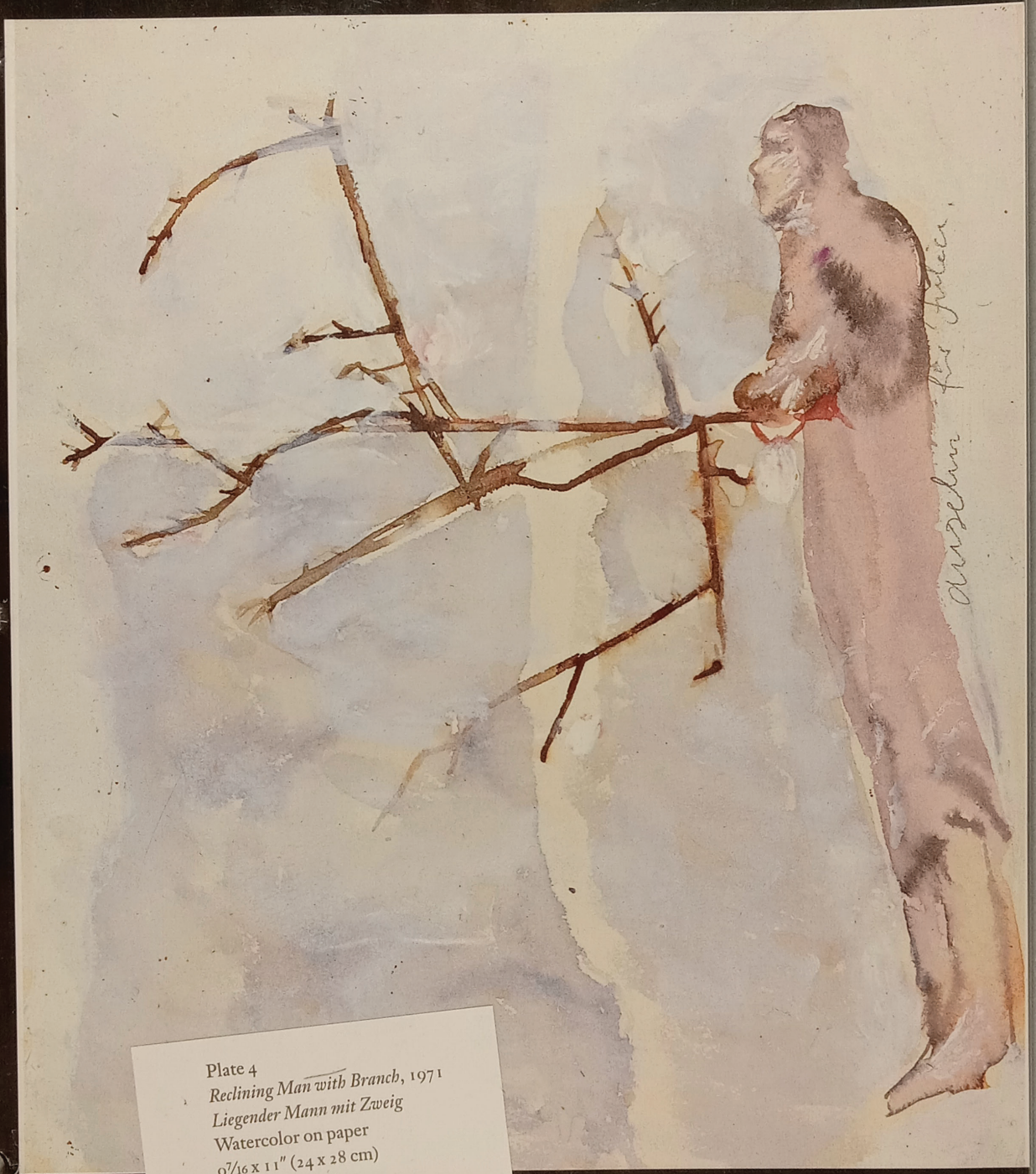


Plate 5  
*Julia*, 1971  
Watercolor and pencil on paper  
18<sup>1</sup>/<sub>16</sub> x 14<sup>3</sup>/<sub>16</sub>" (47.5 x 36 cm)  
Private Collection

FOR STUDY PURPOSES ONLY. NOT FOR REPRODUCTION.

The Museum of Modern Art Archives, NY	Collection:	Series.Folder:
	MoMA Exhs.	1498.39



*Paul Gauguin*

Plate 4  
*Reclining Man with Branch, 1971*  
*Liegender Mann mit Zweig*  
Watercolor on paper  
9 7/16 x 11" (24 x 28 cm)  
Private Collection

FOR STUDY PURPOSES ONLY. NOT FOR REPRODUCTION.

The Museum of Modern Art Archives, NY	Collection:	Series.Folder:
	MoMA Exhs.	1498.39

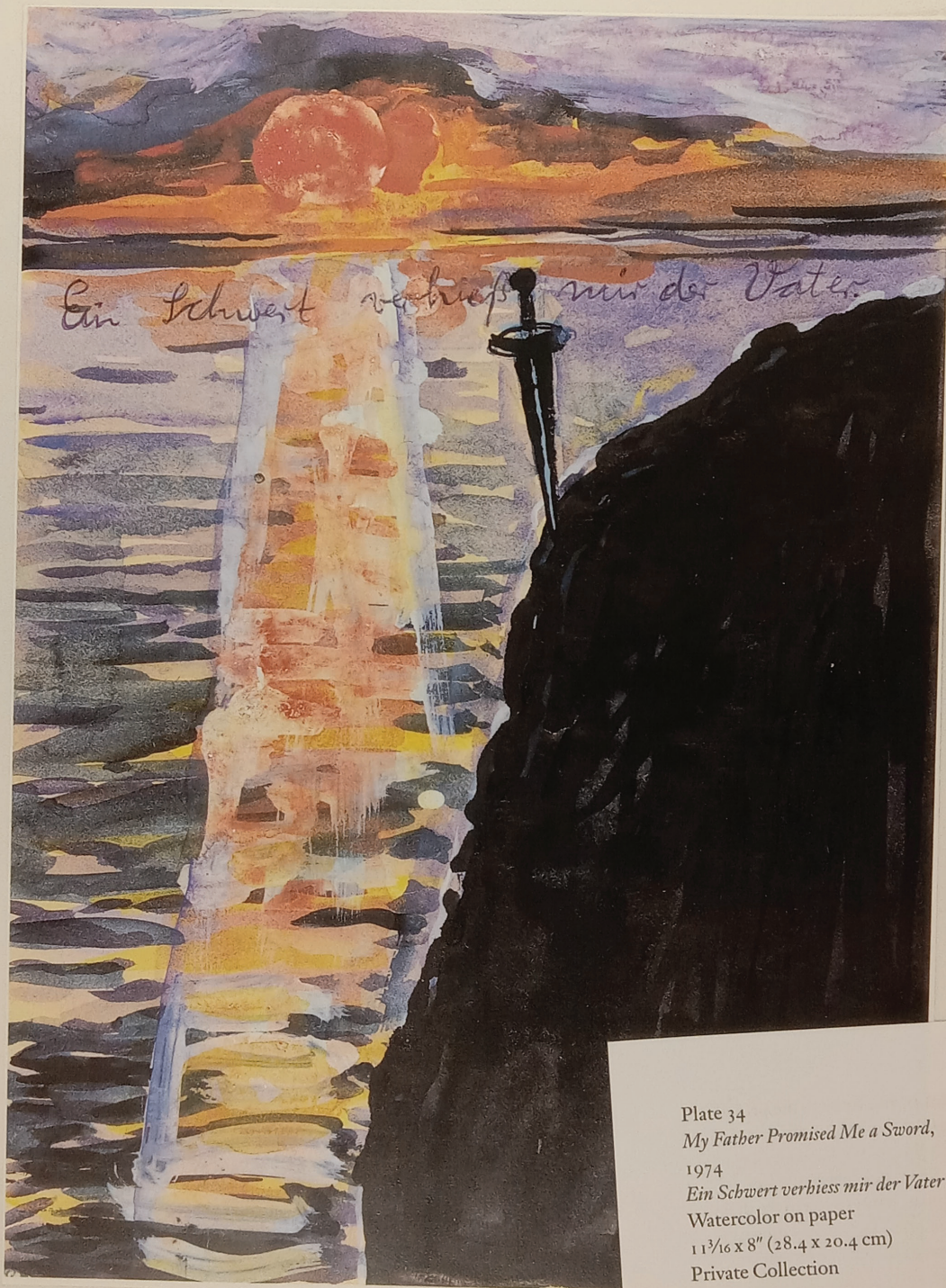


Plate 34  
*My Father Promised Me a Sword*,  
1974  
*Ein Schwert verbiess mir der Vater*  
Watercolor on paper  
11<sup>3</sup>/<sub>16</sub> x 8" (28.4 x 20.4 cm)  
Private Collection

FOR STUDY PURPOSES ONLY. NOT FOR REPRODUCTION.

The Museum of Modern Art Archives, NY	Collection:	Series.Folder:
	MoMA Exhs.	1498.39

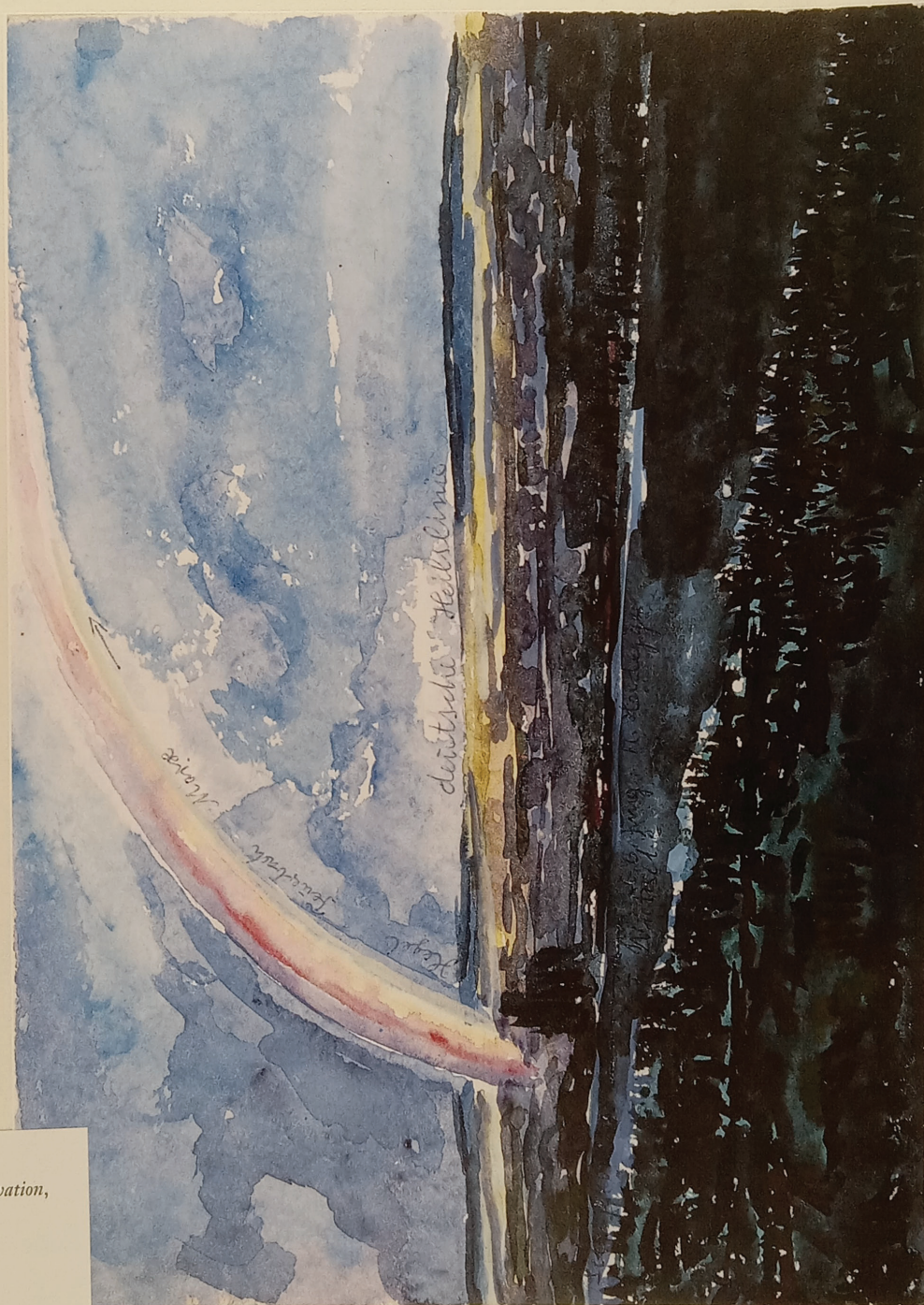
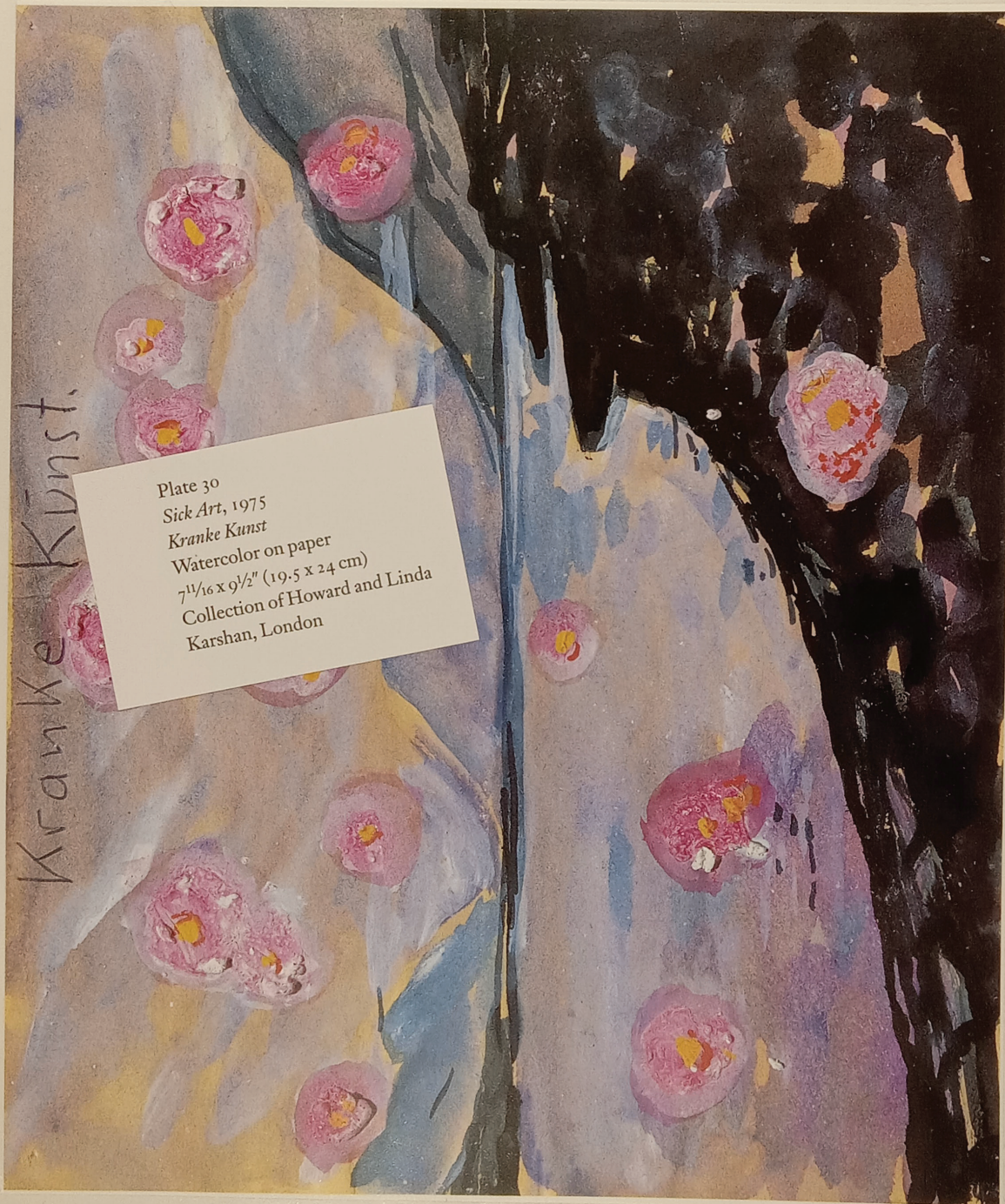


Plate 1  
*German Line of Spiritual Salvation,*  
1975  
*Deutsche Heilslinie*  
Watercolor on paper  
9<sup>7</sup>/<sub>16</sub> x 13<sup>3</sup>/<sub>8</sub>" (24 x 34 cm)  
Private Collection

FOR STUDY PURPOSES ONLY. NOT FOR REPRODUCTION.

The Museum of Modern Art Archives, NY	Collection:	Series.Folder:
	MoMA Exhs.	1498.39



FOR STUDY PURPOSES ONLY. NOT FOR REPRODUCTION.

The Museum of Modern Art Archives, NY	Collection:	Series.Folder:
	MoMA Exhs.	1498.39

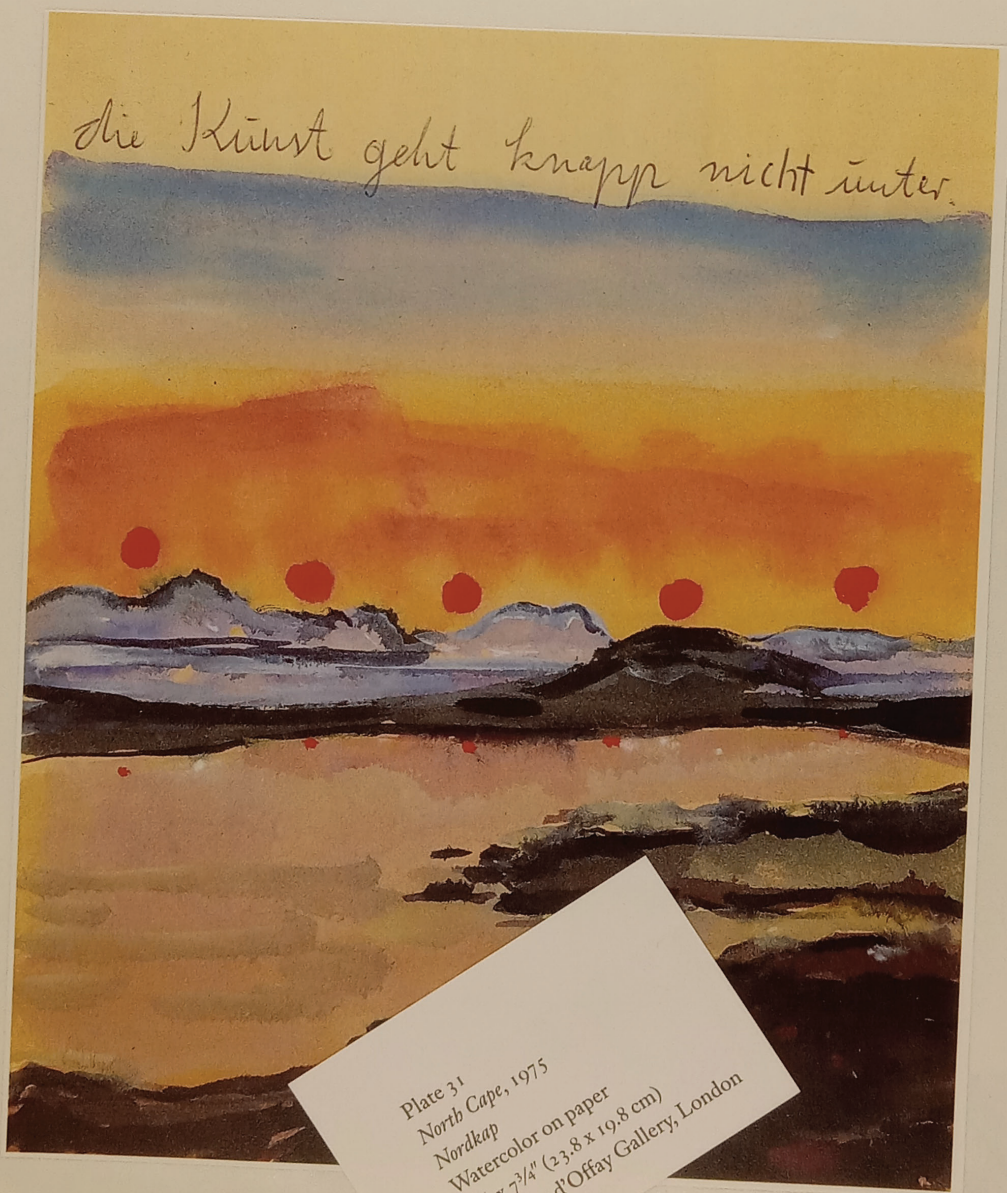


Plate 31  
Nordb Cape, 1975  
Nordkap  
Watercolor on paper  
9 3/8 x 7 3/4" (23,8 x 19,8 cm)  
Anthony d'Offay Gallery, London

FOR STUDY PURPOSES ONLY. NOT FOR REPRODUCTION.

The Museum of Modern Art Archives, NY	Collection:	Series.Folder:
	MoMA Exhs.	1498.39

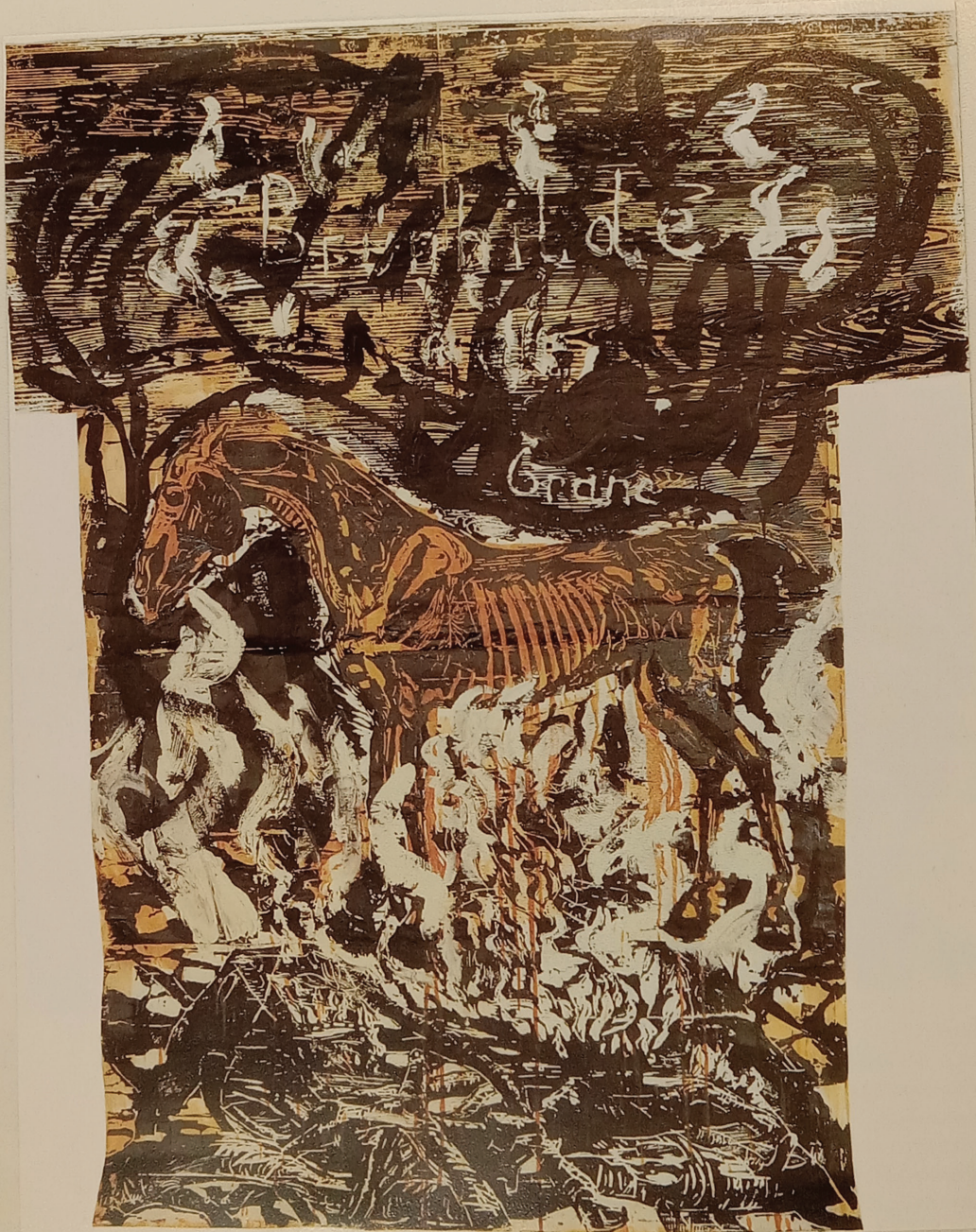


Plate 29  
*Faith, Hope, Love*, 1976  
*Glaube, Hoffnung, Liebe*  
Watercolor and charcoal on paper  
36<sup>5</sup>/<sub>8</sub> x 24<sup>1</sup>/<sub>2</sub>" (93 x 62 cm)  
Private Collection

FOR STUDY PURPOSES ONLY. NOT FOR REPRODUCTION.

The Museum of Modern Art Archives, NY	Collection:	Series.Folder:
	MoMA Exhs.	1498.39

48  
44



FOR STUDY PURPOSES ONLY. NOT FOR REPRODUCTION.

The Museum of Modern Art Archives, NY	Collection:	Series.Folder:
	MoMA Exhs.	1498.39



Plate 27  
*Horror Vacui*, 1979  
Watercolor, gouache, and graphite  
on paper  
16½ x 22" (42 x 56 cm)  
Private Collection

FOR STUDY PURPOSES ONLY. NOT FOR REPRODUCTION.

The Museum of Modern Art Archives, NY	Collection:	Series.Folder:
	MoMA Exhs.	1498.39

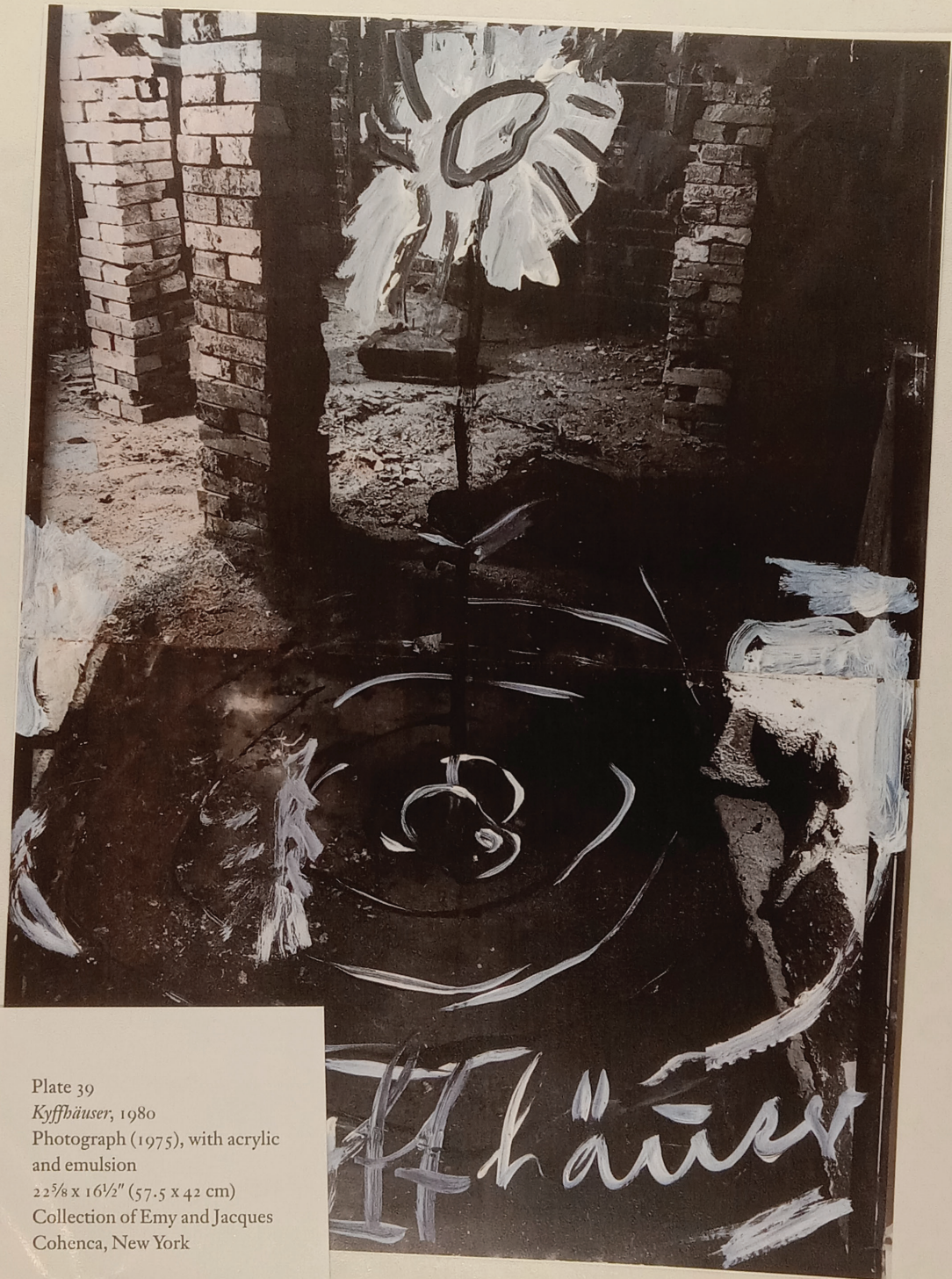


Plate 39  
*Kiffhäuser*, 1980  
Photograph (1975), with acrylic  
and emulsion  
22<sup>5</sup>/<sub>8</sub> x 16<sup>1</sup>/<sub>2</sub>" (57.5 x 42 cm)  
Collection of Emy and Jacques  
Cohenca, New York

FOR STUDY PURPOSES ONLY. NOT FOR REPRODUCTION.

The Museum of Modern Art Archives, NY	Collection:	Series.Folder:
	MoMA Exhs.	1498.39



Plate 53  
*To the Unknown Painter*, 1980  
*Dem unbekanntem Maler*  
Watercolor on paper  
18½ x 19½" (47 x 49.5 cm)  
Collection of Antonio Homem,  
New York

FOR STUDY PURPOSES ONLY. NOT FOR REPRODUCTION.

The Museum of Modern Art Archives, NY	Collection:	Series.Folder:
	MoMA Exhs.	1498.39

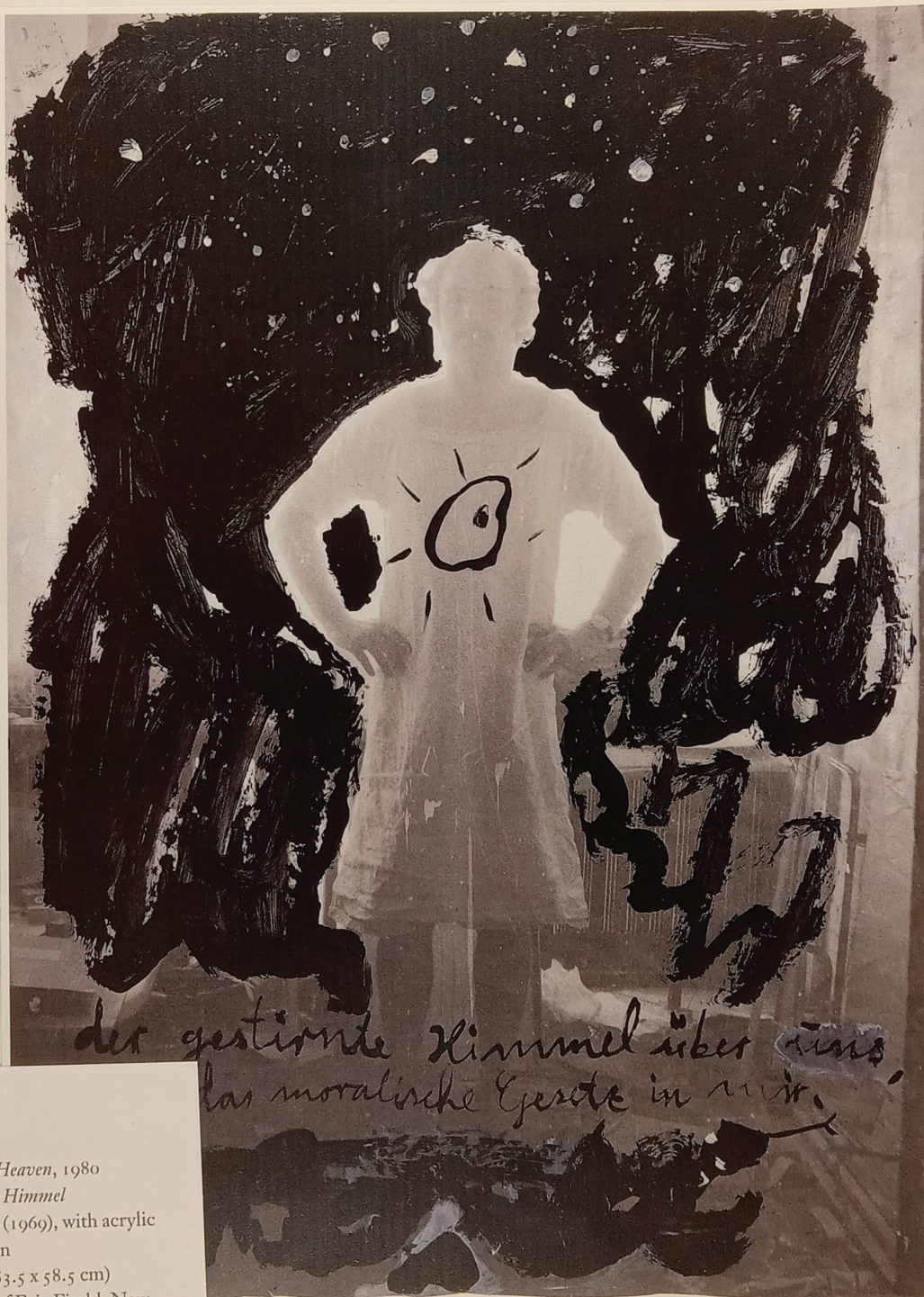


Plate 43  
*The Starred Heaven*, 1980  
*Der gestirnte Himmel*  
Photograph (1969), with acrylic  
and emulsion  
32<sup>7</sup>/<sub>8</sub> x 23" (83.5 x 58.5 cm)  
Collection of Eric Fischl, New  
York

FOR STUDY PURPOSES ONLY. NOT FOR REPRODUCTION.

The Museum of Modern Art Archives, NY	Collection:	Series.Folder:
	MoMA Exhs.	1498.39

FOR STUDY PURPOSES ONLY. NOT FOR REPRODUCTION.

The Museum of Modern Art Archives, NY	Collection:	Series.Folder:
	MoMA Exhs.	1498.39



Plate 44  
*Broken Flowers and Grass*, 1980  
*Gebrochen Blumen und Gras*  
Photograph (1969), with oil,  
acrylic, and emulsion, mounted  
on cardboard  
29 $\frac{1}{8}$  x 22 $\frac{13}{16}$ " (74 x 58 cm)  
Private Collection

FOR STUDY PURPOSES ONLY. NOT FOR REPRODUCTION.

The Museum of Modern Art Archives, NY	Collection:	Series.Folder:
	MoMA Exhs.	1498.39

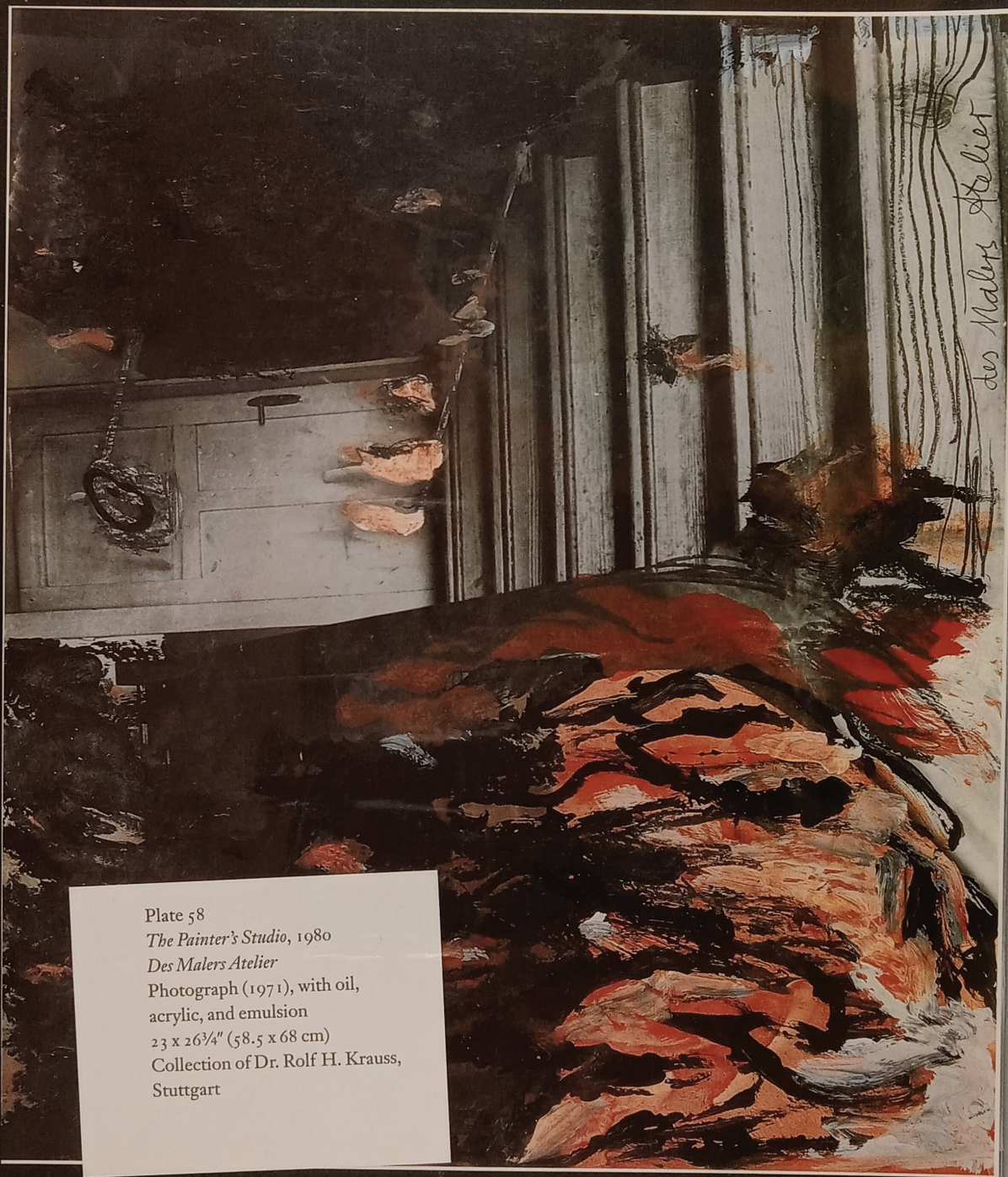


Plate 58  
*The Painter's Studio*, 1980  
*Des Malers Atelier*  
Photograph (1971), with oil,  
acrylic, and emulsion  
23 x 26<sup>3</sup>/<sub>4</sub>" (58.5 x 68 cm)  
Collection of Dr. Rolf H. Krauss,  
Stuttgart

FOR STUDY PURPOSES ONLY. NOT FOR REPRODUCTION.

The Museum of Modern Art Archives, NY	Collection:	Series.Folder:
	MoMA Exhs.	1498.39



Plate 41

*Churwawa/Gilgam*

*Churwawa/Gilgam*

Photograph (1966

and emulsion

31 x 23" (79 x 58.5 cm)

Private Collection (courtesy

Lawrence Oliver Gallery,

Philadelphia)

FOR STUDY PURPOSES ONLY. NOT FOR REPRODUCTION.

The Museum of Modern Art Archives, NY	Collection:	Series.Folder:
	MoMA Exhs.	1498.39

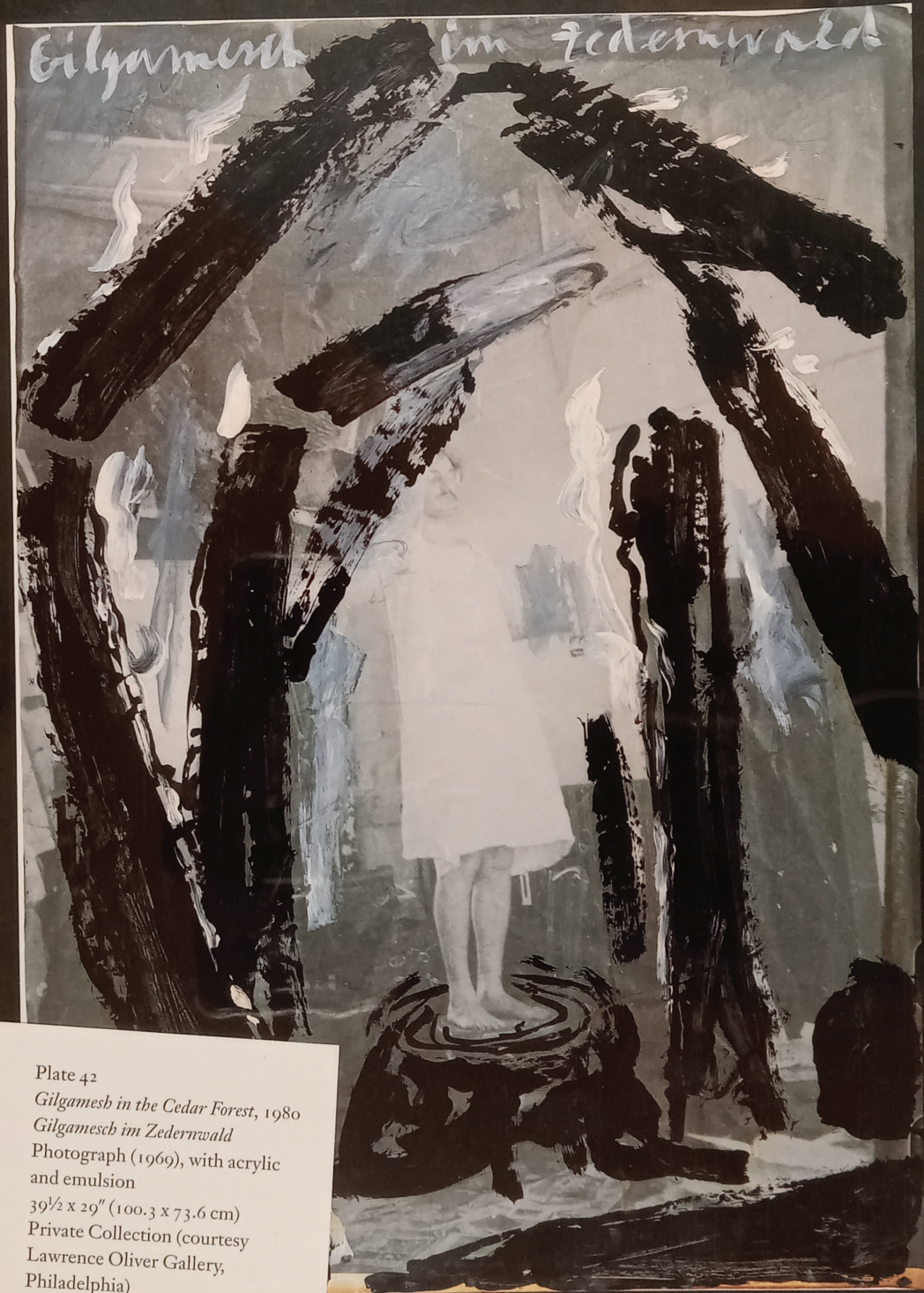


Plate 42  
*Gilgamesh in the Cedar Forest*, 1980  
*Gilgamesch im Zedernwald*  
Photograph (1969), with acrylic  
and emulsion  
39½ x 29" (100.3 x 73.6 cm)  
Private Collection (courtesy  
Lawrence Oliver Gallery,  
Philadelphia)

FOR STUDY PURPOSES ONLY. NOT FOR REPRODUCTION.

The Museum of Modern Art Archives, NY	Collection:	Series.Folder:
	MoMA Exhs.	1498.39



Plate 38  
*Palette with Wings*, 1981  
*Palette mit Flügeln*  
Photograph, with oil  
25<sup>3</sup>/<sub>16</sub> x 28<sup>3</sup>/<sub>4</sub>" (64 x 73 cm)  
Collection of David and Eileen  
Peretz (courtesy Marian  
Goodman Gallery, New York)

FOR STUDY PURPOSES ONLY. NOT FOR REPRODUCTION.

The Museum of Modern Art Archives, NY	Collection:	Series.Folder:
	MoMA Exhs.	1498.39

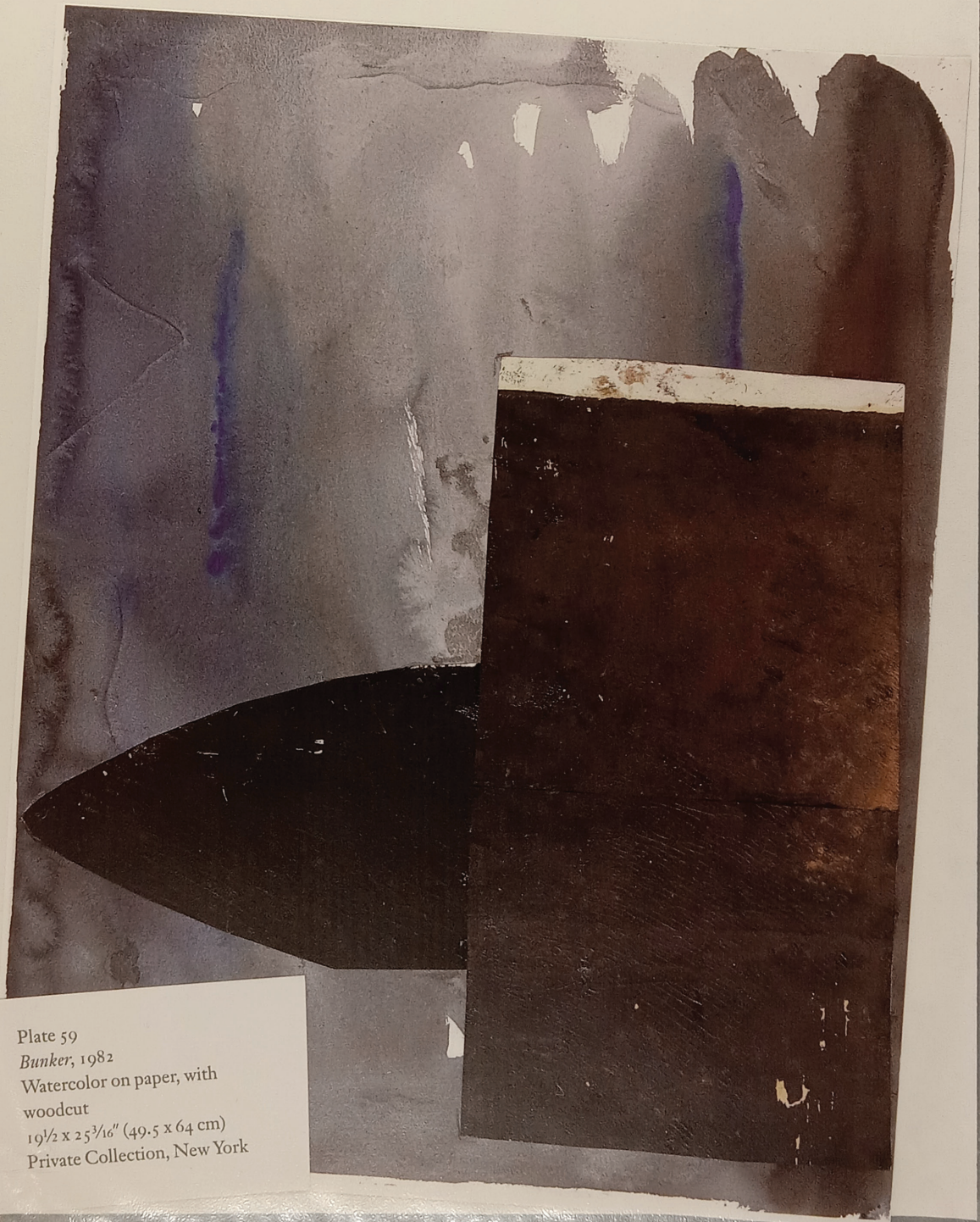


Plate 59  
*Bunker*, 1982  
Watercolor on paper, with  
woodcut  
19 1/2 x 25 3/16" (49.5 x 64 cm)  
Private Collection, New York

FOR STUDY PURPOSES ONLY. NOT FOR REPRODUCTION.

The Museum of Modern Art Archives, NY	Collection:	Series.Folder:
	MoMA Exhs.	1498.39



Plate 54  
*To the Unknown Painter*, 1982  
*Dem unbekanntem Maler*  
Watercolor and pencil on paper  
25<sup>3</sup>/<sub>16</sub> x 52<sup>3</sup>/<sub>8</sub>" (64 x 133 cm)  
Anthony d'Offay Gallery, London

FOR STUDY PURPOSES ONLY. NOT FOR REPRODUCTION.

The Museum of Modern Art Archives, NY	Collection:	Series.Folder:
	MoMA Exhs.	1498.39

Plate 55

*To the Unknown Painter, 1982*

*Dem unbekanntem Maler*

Watercolor and pencil on paper

34<sup>5</sup>/<sub>8</sub> x 21<sup>5</sup>/<sub>8</sub>" (88 x 55 cm)

Collection of Mrs. Mel Morris,  
London



FOR STUDY PURPOSES ONLY. NOT FOR REPRODUCTION.

The Museum of Modern Art Archives, NY	Collection:	Series.Folder:
	MoMA Exhs.	1498.39

Plate 66  
*The Miracle of the Serpents,*  
1984-85  
*Das Schlangenwunder*  
Shellac and photographs on  
projection paper  
22<sup>13</sup>/<sub>16</sub> x 32<sup>11</sup>/<sub>16</sub>" (58 x 83 cm)  
Collection of Dr. and Mrs.  
Konrad M. Weis, Pittsburgh



FOR STUDY PURPOSES ONLY. NOT FOR REPRODUCTION.

The Museum of Modern Art Archives, NY	Collection:	Series.Folder:
	MoMA Exhs.	1498.39

Plate 65

*Departure from Egypt*, 1984-85

*Auszug aus Ägypten*

Acrylic, charcoal, and photograph,  
mounted on cardboard, with  
string

42½ x 33" (108 x 84 cm)

The Museum of Modern Art,  
New York. Gift of the Denise and  
Andrew Saul Fund

134 2/4



FOR STUDY PURPOSES ONLY. NOT FOR REPRODUCTION.

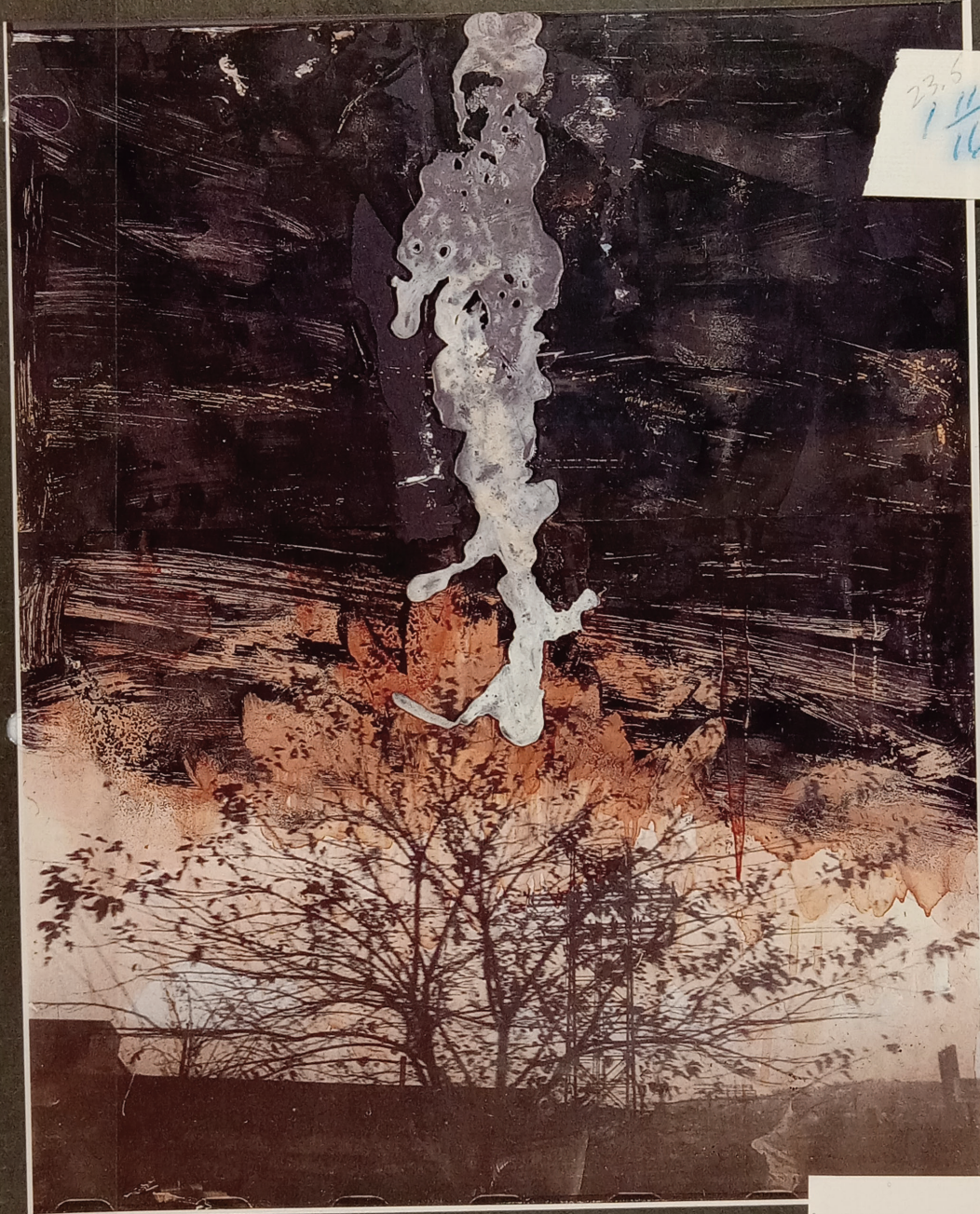
The Museum of Modern Art Archives, NY	Collection:	Series.Folder:
	MoMA Exhs.	1498.39

Plate 77  
*Emanation*, 1984-85  
Shellac on photograph, mounted  
on cardboard, with lead  
22½ x 32" (57 x 81 cm)  
Collection of Jerry and Emily  
Spiegel, Kings Point, New York



FOR STUDY PURPOSES ONLY. NOT FOR REPRODUCTION.

The Museum of Modern Art Archives, NY	Collection:	Series.Folder:
	MoMA Exhs.	1498.39



23.5  
1 1/4 H.

Plate 76  
*Yggdrasil*, 1985  
Acrylic, emulsion, and shellac on  
photograph, with lead  
40 1/2 x 32 7/8" (102.9 x 83.5 cm)  
Collection of Mr. and Mrs.  
Stephen H. Frishberg, Radnor,  
Pennsylvania

FOR STUDY PURPOSES ONLY. NOT FOR REPRODUCTION.

The Museum of Modern Art Archives, NY	Collection:	Series.Folder:
	MoMA Exhs.	1498.39



FOR STUDY PURPOSES ONLY. NOT FOR REPRODUCTION.

The Museum of Modern Art Archives, NY	Collection:	Series.Folder:
	MoMA Exhs.	1498.39

1 1/16 H.



FOR STUDY PURPOSES ONLY. NOT FOR REPRODUCTION.

The Museum of Modern Art Archives, NY	Collection:	Series.Folder:
	MoMA Exhs.	1498.39

27  
1 1/2  
16 H.



FOR STUDY PURPOSES ONLY. NOT FOR REPRODUCTION.

The Museum of Modern Art Archives, NY	Collection:	Series.Folder:
	MoMA Exhs.	1498.39

28 1 3/4 #.



FOR STUDY PURPOSES ONLY. NOT FOR REPRODUCTION.

The Museum of Modern Art Archives, NY	Collection:	Series.Folder:
	MoMA Exhs.	1498.39

27  
1 1/2  
16 H.



FOR STUDY PURPOSES ONLY. NOT FOR REPRODUCTION.

The Museum of Modern Art Archives, NY	Collection:	Series.Folder:
	MoMA Exhs.	1498.39

28 1 3/4 #.

