

CONDITIONS OF USE FOR THIS PDF

The images contained within this PDF may be used for private study, scholarship, and research only. They may not be published in print, posted on the internet, or exhibited. They may not be donated, sold, or otherwise transferred to another individual or repository without the written permission of The Museum of Modern Art Archives.

When publication is intended, publication-quality images must be obtained from SCALA Group, the Museum's agent for licensing and distribution of images to outside publishers and researchers.

If you wish to quote any of this material in a publication, an application for permission to publish must be submitted to the MoMA Archives. This stipulation also applies to dissertations and theses. All references to materials should cite the archival collection and folder, and acknowledge "The Museum of Modern Art Archives, New York."

Whether publishing an image or quoting text, you are responsible for obtaining any consents or permissions which may be necessary in connection with any use of the archival materials, including, without limitation, any necessary authorizations from the copyright holder thereof or from any individual depicted therein.

In requesting and accepting this reproduction, you are agreeing to indemnify and hold harmless The Museum of Modern Art, its agents and employees against all claims, demands, costs and expenses incurred by copyright infringement or any other legal or regulatory cause of action arising from the use of this material.

NOTICE: WARNING CONCERNING COPYRIGHT RESTRICTIONS

The copyright law of the United States (Title 17, United States Code) governs the making of photocopies or other reproductions of copyrighted material. Under certain conditions specified in the law, libraries and archives are authorized to furnish a photocopy or other reproduction. One of these specified conditions is that the photocopy or reproduction is not to be "used for any purpose other than private study, scholarship, or research." If a user makes a request for, or later uses, a photocopy or reproduction for purposes in excess of "fair use," that user may be liable for copyright infringement.

Please note, the following folder, 1498.1 from The Museum of Modern Art Exhibition Records contains the master checklist for *Anselm Kiefer* [MoMA Exh. #1498, October 16, 1988–January 3, 1989], which is in the form of an annotated exhibition catalogue. The catalogue contains a "Checklist of the Exhibition" printed on pgs. 167-169. However, based on the annotations in the catalogue, the archivist has found this checklist to be incomplete. Therefore, "Checklist of the Exhibition" as printed in the back of the catalogue on pgs. 167-169 has been scanned, as well as the annotated pages for any additional works not included in the aforementioned list. This is the most complete record we have for what was exhibited.

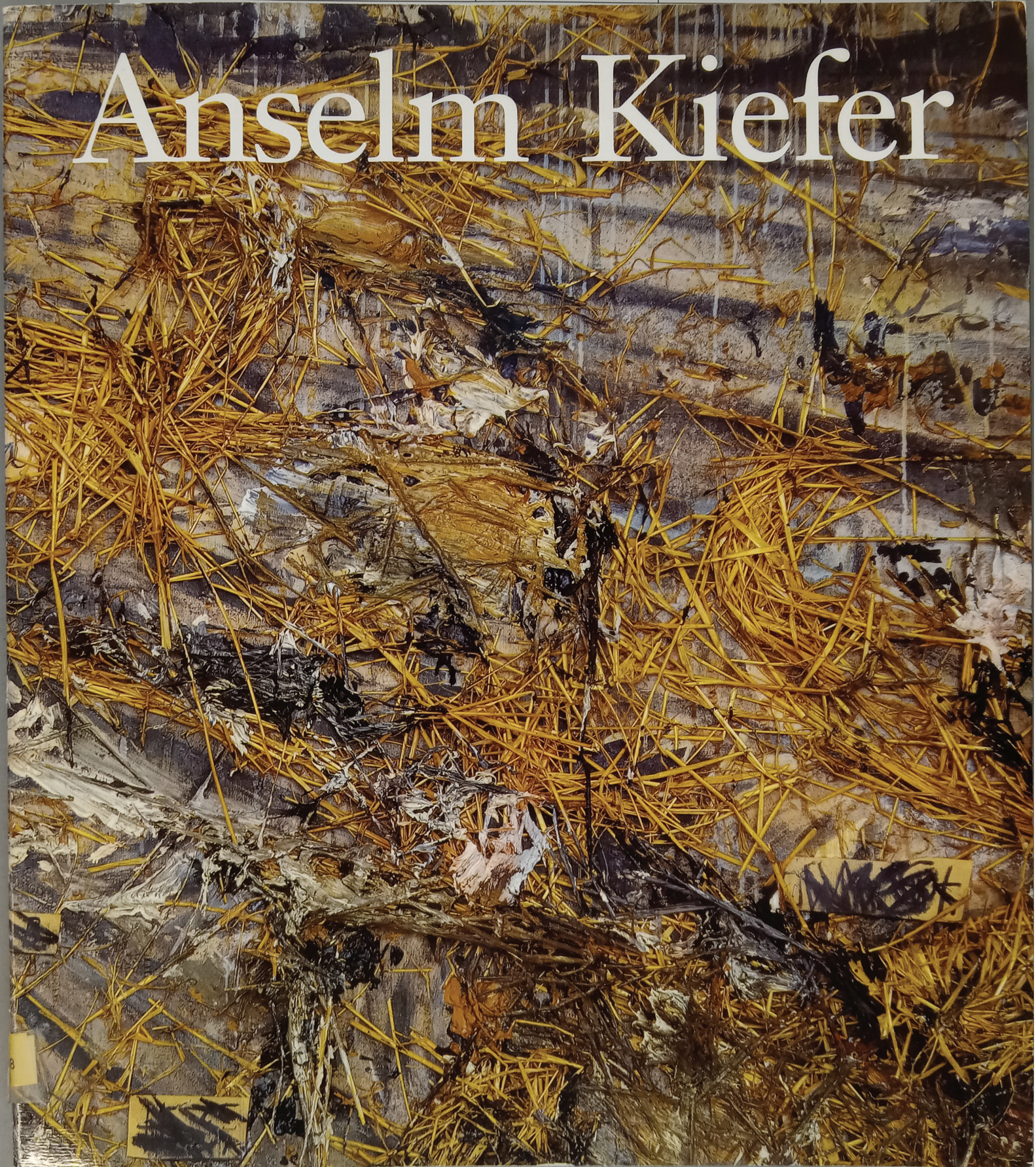
FOR STUDY PURPOSES ONLY. NOT FOR REPRODUCTION.

The Museum of Modern Art Archives, NY

Collection:
MoMA Exhs.

Series.Folder:
1498.1

Anselm Kiefer



FOR STUDY PURPOSES ONLY. NOT FOR REPRODUCTION.

The Museum of Modern Art Archives, NY	Collection:	Series.Folder:
	MoMA Exhs.	1498.1

Anselm Kiefer

by Mark Rosenthal

Organized by

A. James Speyer
The Art Institute of Chicago

Mark Rosenthal
Philadelphia Museum of Art

Chicago and Philadelphia

1987

FOR STUDY PURPOSES ONLY. NOT FOR REPRODUCTION.

The Museum of Modern Art Archives, NY	Collection:	Series.Folder:
	MoMA Exhs.	1498.1

Itinerary of the Exhibition

The Art Institute of Chicago
December 5, 1987—January 31, 1988

Philadelphia Museum of Art
March 6—May 1, 1988

The Museum of Contemporary Art, Los Angeles
June 14—September 11, 1988

The Museum of Modern Art, New York
October 17, 1988—January 3, 1989

Cover: Detail of *Nuremberg* (*Nürnberg*), 1982 (pl. 48)

Museum edition published by The Art Institute of
Chicago and the Philadelphia Museum of Art
ISBN 0-87633-071-5

Trade edition distributed by Prestel-Verlag,
Mandlstrasse 26, D-8000, Munich 40
Distributed in the United States of America and
Canada by the Neues Publishing Company,
15 East 76 Street, New York, N.Y. 10021
ISBN 3-7913-0847-5

© 1987 Philadelphia Museum of Art
All rights reserved
Printed in the United States of America

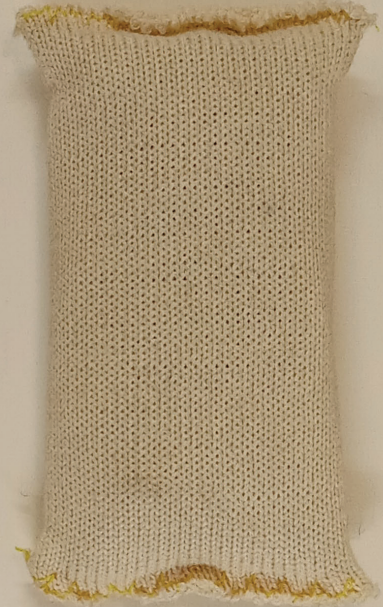
The publishers of "Death Fugue" ("Todesfuge") by Paul Celan
have generously given their permission for the poem to be
reprinted from: *Mohn und Gedächtnis*, © 1952 by Deutsche Verlags-
Anstalt GmbH, Stuttgart; translation from *Paul Celan: Poems*,
Persea Books, New York, © 1980 by Michael Hamburgur

Library of Congress Cataloging-in-Publication Data
Rosenthal, Mark (Mark Lawrence)
Anselm Kiefer / by Mark Rosenthal; organized by A. James
Speyer, Mark Rosenthal.

p. cm.
Itinerary of the exhibition: The Art Institute of Chicago, Dec.
5, 1987—Jan. 31, 1988 and others.
Bibliography: p.
Includes indexes.

ISBN 0-87633-071-5 (Philadelphia Museum of Art)
1. Kiefer, Anselm, 1945—Exhibitions. 2. Painting,
German—Germany (West)—Exhibitions. 3. Painting, Mod-
ern—20th century—Germany (West)—Exhibitions. 4. Artists'
books—Germany (West)—Exhibitions. I. Art Institute of
Chicago. II. Philadelphia Museum of Art. III. Title.
ND588.K464A4 1987a
759.3—dc19

87-29007
CIP



Content

The Museum of Modern Art Archives, NY	Collection:	Series.Folder:
	MoMA Exhs.	1498.1

Contents

Lenders to the Exhibition	6
Foreword	7
Acknowledgments	9
Introduction	10
Developing an Outlook: 1969 to 1973	12
On Being German and an Artist: 1974 to 1980	32
A Formal Breakthrough: 1980 to 1982	76
Visions of a New World: 1980 to 1987	106
Postscript	155
Notes	156
Selected Exhibitions	161
Selected Bibliography	164
Checklist of the Exhibition	167
Index of Names	170
Index of Illustrations	171

The Museum of Modern Art Archives, NY	Collection:	Series.Folder:
	MoMA Exhs.	1498.1

Checklist of the Exhibition

- Every Human Being Stands beneath His Own Dome of Heaven*, 1970
Jeder Mensch steht unter seiner Himmelskugel
Watercolor and pencil on paper
15³/₄ x 18¹/₈" (40 x 48 cm)
Private Collection
Cat. No. 5
- Winter Landscape*, 1970
Winterlandschaft
Watercolor on paper
16³/₁₆ x 14³/₁₆" (43 x 36 cm)
Private Collection
Cat. No. 6
- Man in the Forest*, 1971
Mann im Wald
Oil on muslin
68¹/₂ x 74⁷/₁₆" (174 x 189 cm)
Private Collection
Cat. No. 1
- Julia*, 1971
Watercolor and pencil on paper
18¹/₁₆ x 14³/₁₆" (47.5 x 36 cm)
Private Collection
Cat. No. 7
- Reclining Man with Branch*, 1971
Liegender Mann mit Zweig
Watercolor on paper
9⁷/₁₆ x 11" (24 x 28 cm)
Private Collection
Cat. No. 8
- Landscape with Head*, 1973
Landschaft mit Kopf
Oil, distemper, and charcoal on burlap, with charcoal on cardboard
82¹/₁₆ x 94¹/₂" (210 x 240 cm)
Private Collection
Cat. No. 2
- Resurrexit*, 1973
Oil, acrylic, and charcoal on burlap
114¹/₁₆ x 70⁷/₈" (290 x 180 cm)
Collection Sanders, Amsterdam
Cat. No. 24
- Germany's Spiritual Heroes*, 1973
Deutschlands Geisteshelden
Oil and charcoal on burlap, mounted on canvas
120⁷/₈ x 268¹/₂" (307 x 682 cm)
Collection of Barbara and Eugene Schwartz, New York
Cat. No. 40
- Cockchafer Fly*, 1974
Maikäfer flieg
Oil on burlap
86⁵/₈ x 118¹/₈" (220 x 300 cm)
Saatchi Collection, London
Cat. No. 30
- To Paint*, 1974
Malen
Oil and shellac on burlap
46¹/₂ x 100" (118 x 254 cm)
Family H. de Groot Collection, Groningen, The Netherlands
Cat. No. 29
- My Father Promised Me a Sword*, 1974
Ein Schwert verbiess mir der Vater
Watercolor on paper
11¹/₁₆ x 8" (28.4 x 20.4 cm)
Private Collection
Cat. No. 9
- German Line of Spiritual Salvation*, 1975
Deutsche Heilslinie
Watercolor on paper
9⁷/₁₆ x 13³/₈" (24 x 34 cm)
Private Collection
Cat. No. 10
- Sick Art*, 1975
Kranke Kunst
Watercolor on paper
7¹/₁₆ x 9¹/₂" (19.5 x 24 cm)
Collection of Howard and Linda Karshan, London
Cat. No. 35
- North Cape*, 1975
Nordkap
Watercolor on paper
9³/₈ x 7³/₄" (23.8 x 19.8 cm)
Anthony d'Offay Gallery, London
Cat. No. 38
- Cauterization of the Rural District of Buchen*, 1975
Ausbrennen des Landkreises Buchen
Eight bound volumes, each oil, charcoal, and glue on twenty strips of burlap
23³/₈ x 16¹/₂ x 3¹/₈" (60 x 42 x 8 cm) (each)
Private Collection
Cat. No. 16
- Piet Mondrian—Operation Sea Lion*, 1975
Piet Mondrian—Unternehmen "Seelöwe"
Thirty-four double-page photographic images, mounted on cardboard and bound
22⁷/₁₆ x 16¹/₂ x 2" (57 x 42 x 5 cm)
Collection of Marian Goodman, New York
Cat. No. 51
- Piet Mondrian—Arminius's Battle*, 1976
Piet Mondrian—Hermannschlacht
Oil on canvas
96¹/₂ x 44¹/₄" (245 x 112.5 cm)
Visser Collection, Retie, Belgium
Cat. No. 28
- Faith, Hope, Love*, 1976
Glaube, Hoffnung, Liebe
Watercolor and charcoal on paper
36⁵/₈ x 24¹/₂" (93 x 62 cm)
Private Collection
Cat. No. 12
- Ways of Worldly Wisdom*, 1976-77
Wege der Weltweisheit
Oil, acrylic, and shellac on burlap, mounted on canvas
120 x 196⁵/₈" (305 x 500 cm)
Collection Sanders, Amsterdam
Cat. No. 25
- March Sand V*, 1977
Märkischer Sand V
Twenty-five double-page photographic images, with sand, oil, and glue, mounted on cardboard and bound
24³/₈ x 16⁵/₈ x 3³/₈" (62 x 42 x 8.5 cm)
Collection of Mr. and Mrs. Andrew Saul, New York
Cat. No. 53
- Tree with Palette*, 1978
Baum mit Palette
Oil on canvas, with lead
108¹/₄ x 75³/₈" (275 x 191.5 cm)
Private Collection (courtesy Sonnabend Gallery, New York)
Cat. No. 41
- Brunbilde—Grane*, 1978
Brünbilde—Grane
Woodcut, with oil
95¹/₂ x 76" (242.5 x 193 cm)
Private Collection (courtesy Sonnabend Gallery, New York)
Cat. No. 43
- Horror Vacui*, 1979
Watercolor, gouache, and graphite on paper
16¹/₂ x 22" (42 x 56 cm)
Private Collection
Cat. No. 13
- Ways of Worldly Wisdom—Arminius's Battle*, 1978-80
Wege der Weltweisheit—die Hermanns-Schlacht
Woodcut, with acrylic and shellac, mounted on canvas
126 x 196⁵/₈" (320 x 500 cm)
The Art Institute of Chicago. Wirt D. Walker Fund and Restricted Gift from Mr. and Mrs. Noel Rothman, Mr. and Mrs. Douglas Cohen, Mr. and Mrs. Thomas Dittmer, Mr. and Mrs. Lewis Manilow, Mr. and Mrs. Joseph Shapiro, and Mr. and Mrs. Ralph Goldenberg
Cat. No. 65
- Ways: March Sand*, 1980
Wege: märkischer Sand
Acrylic and sand on photograph, mounted on burlap
100³/₈ x 141³/₄" (255 x 360 cm)
Saatchi Collection, London
Cat. No. 31
- Ride to the Vistula*, 1980
Ritt an die Weichsel
Oil on canvas
51³/₁₆ x 67" (130 x 170 cm)
Collection of Werner and Elaine Dannheisser, New York
Cat. No. 44
- Kyffhäuser*, 1980
Photograph (1975), with acrylic and emulsion
22³/₈ x 16¹/₂" (57.5 x 42 cm)
Collection of Emy and Jacques Cohenca, New York
Cat. No. 48
- To the Unknown Painter*, 1980
Dem unbekanntem Maler
Watercolor on paper
18¹/₂ x 19¹/₂" (47 x 49.5 cm)
Collection of Antonio Homem, New York
Cat. No. 42
- The Starred Heaven*, 1980
Der gestirnte Himmel
Photograph (1969), with acrylic and emulsion
32³/₈ x 23" (83.5 x 58.5 cm)
Collection of Eric Fischl, New York
Cat. No. 50

The Museum of Modern Art Archives, NY	Collection:	Series.Folder:
	MoMA Exhs.	1498.1

- Brunbilde Sleeps*, 1980
Brünbilde schläft
Photograph (1969), with acrylic and emulsion, mounted on cardboard
23 x 32¹¹/₁₆" (58.5 x 83 cm)
Private Collection
Cat. No. 14
- Broken Flowers and Grass*, 1980
Gebrochen Blumen und Gras
Photograph (1969), with oil, acrylic, and emulsion, mounted on cardboard
29¹/₈ x 22¹³/₁₆" (74 x 58 cm)
Private Collection
Cat. No. 15
- The Painter's Studio*, 1980
Des Malers Atelier
Photograph (1971), with oil, acrylic, and emulsion
23 x 26³/₄" (58.5 x 68 cm)
Collection of Dr. Rolf H. Krauss, Stuttgart
Cat. No. 21
- Churwawa / Gilgamesh*, 1980
Churwawa / Gilgamesh
Photograph (1969), with acrylic and emulsion
31 x 23" (79 x 58.5 cm)
Private Collection (courtesy Lawrence Oliver Gallery, Philadelphia)
Cat. No. 56
- Gilgamesh in the Cedar Forest*, 1980
Gilgamesh im Zedernwald
Photograph (1969), with acrylic and emulsion
39¹/₂ x 29" (100.3 x 73.6 cm)
Private Collection (courtesy Lawrence Oliver Gallery, Philadelphia)
Cat. No. 57
- Midsummer Night IV*, 1980
Johannismacht IV
Thirty-two double-page photographic images, with acrylic, emulsion, and graphite, mounted on cardboard and bound
23¹/₈ x 16¹/₂ x 4³/₈" (59 x 42 x 12 cm)
Collection of Marian Goodman, New York
Cat. No. 52
- Kyffhäuser*, 1980-81
Twenty-three double-page photographic images, with oil and emulsion, mounted on cardboard and bound
23³/₄ x 16¹/₂ x 3¹/₄" (60 x 42 x 8 cm)
Collection of Francesco and Alba Clemente, New York
Cat. No. 54
- Icarus—March Sand*, 1981
Ikarus—märkischer Sand
Oil, emulsion, shellac, and sand on photograph, mounted on canvas
114³/₁₆ x 141³/₄" (290 x 360 cm)
Saatchi Collection, London
Cat. No. 32
- Your Golden Hair*, Margarete, 1981
Dein goldenes Haar, Margarethe
Oil, emulsion, and straw on canvas
51³/₁₆ x 67" (130 x 170 cm)
Collection Sanders, Amsterdam
Cat. No. 26
- Interior*, 1981
Innenraum
Oil, acrylic, emulsion, straw, and shellac on canvas, with woodcut
113 x 122⁷/₁₆" (287 x 311 cm)
Stedelijk Museum, Amsterdam
Cat. No. 27
- Palette with Wings*, 1981
Palette mit Flügeln
Photograph, with oil
25³/₁₆ x 28³/₄" (64 x 73 cm)
Collection of David and Eileen Peretz (courtesy Marian Goodman Gallery, New York)
Cat. No. 49
- Iconoclastic Controversy II*, 1981
Bilderstreit II
Twenty double-page photographic images, with oil, mounted on cardboard and bound
22⁷/₈ x 17 x 3¹/₈" (58 x 43 x 8 cm)
Collection of Mr. and Mrs. David Pincus, Wynnewood, Pennsylvania
Cat. No. 63
- The Mastersingers*, 1981-82
Die Meistersinger
Oil, emulsion, and sand on photograph, mounted on canvas
110¹/₄ x 149³/₈" (280 x 380 cm)
Private Collection
Cat. No. 4
- Wayland's Song (with Wing)*, 1982
Wälundlied (mit Flügel)
Oil, emulsion, and straw on photograph, mounted on canvas, with lead
110¹/₄ x 149³/₈" (280 x 380 cm)
Saatchi Collection, London
Cat. No. 33
- Nuremberg*, 1982
Nürnberg
Acrylic, emulsion, and straw on canvas
110¹/₄ x 149³/₈" (280 x 380 cm)
Collection of Eli and Edythe L. Broad, Los Angeles
Cat. No. 70
- Bunker*, 1982
Watercolor on paper, with woodcut
19¹/₂ x 25³/₁₆" (49.5 x 64 cm)
Private Collection, New York
Cat. No. 37
- To the Unknown Painter*, 1982
Dem unbekanntem Maler
Watercolor and pencil on paper
25³/₁₆ x 52³/₈" (64 x 133 cm)
Anthony d'Offay Gallery, London
Cat. No. 39
- To the Unknown Painter*, 1982
Dem unbekanntem Maler
Watercolor and pencil on paper
34³/₈ x 21⁵/₈" (88 x 55 cm)
Collection of Mrs. Mel Morris, London (Los Angeles and New York only)
Cat. No. 36
- The Stairs*, 1982-83
Die Treppe
Oil, emulsion, and straw on photograph, mounted on canvas
130 x 72⁷/₈" (330 x 185 cm)
Private Collection
Cat. No. 3
- Shulamite*, 1983
Sulamith
Oil, acrylic, emulsion, shellac, and straw on canvas, with woodcut
114³/₁₆ x 145¹/₁₆" (290 x 370 cm)
Saatchi Collection, London
Cat. No. 34
- The Rhine*, 1983
Der Rhein
Woodcut, with oil, acrylic, and shellac, mounted on canvas
110¹/₄ x 110¹/₄" (280 x 280 cm)
Collection of Céline and Heiner Bastian, Berlin
Cat. No. 22
- The Rhine*, 1983
Der Rhein
Eighteen double-page woodcuts, with oil, mounted on cardboard and bound
23³/₁₆ x 16⁹/₁₆ x 2¹⁵/₁₆" (59 x 42 x 7.5 cm)
The Carnegie Museum of Art, Pittsburgh.
Leisser Art Fund
Cat. No. 60
- The Rhine I*, 1983
Der Rhein I
Twenty double-page woodcuts, mounted on cardboard and bound
23¹/₂ x 16¹/₂ x 3¹/₂" (60 x 42 x 8.7 cm)
Private Collection
Cat. No. 74
- The Order of the Angels*, 1983-84
Die Ordnung der Engel
Oil, acrylic, emulsion, shellac, and straw on canvas, with cardboard and lead
130 x 218¹/₂" (330 x 555 cm)
The Art Institute of Chicago. Restricted Gift of the Nathan Manilow Foundation and Lewis and Susan Manilow, and Samuel A. Marx Fund
(Chicago only)
- Nigredo*, 1984
Oil, acrylic, emulsion, shellac, and straw on photograph, mounted on canvas, with woodcut
130 x 218¹/₂" (330 x 555 cm)
Philadelphia Museum of Art. Gift of the Friends of the Philadelphia Museum of Art in celebration of their Twentieth Anniversary
(Philadelphia only)

The Museum of Modern Art Archives, NY	Collection:	Series/Folder:
	MoMA Exhs.	1498.1

The Tree of Jesse, 1987

WURZA Jesse

Palm roots on photo on lead
treated with acid.

93" x 50"

(236.3cm x 127.0cm)

Collection of Norman + Irma Berhan
(NEW YORK ONLY)THE MILKY WAY, 1985-7

DIE MILCHSTRASSE

Oil, synthetic polymer paint,
emulsion, + shellac on canvas
with applied wires + lead object.Albright - Knox Art Gallery, Buffalo
(NEW YORK ONLY)The RAFT 1987

DAS FLOSSE

Acrylic, clay wash, wet lead,
fern on photo on lead treated with
acid.PRIVATE COLLECTION
(NEW YORK ONLY)

Departure from Egypt, 1984

Auszug aus Ägypten

Oil, acrylic, emulsion, shellac, and straw
on canvas (in two parts), with lead
149 1/2 x 221" (379.7 x 561.3 cm)The Museum of Contemporary Art, Los
Angeles. Purchased with funds provided
by Douglas S. Cramer, Beatrice and Philip
Gersh, Lenore S. and Bernard A. Green-
berg, Joan and Fred Nicholas, Robert A.
Rowan, Pippa Scott, and an anonymous
donor

(Los Angeles only)

The Book, 1979-85

Das Buch

Acrylic, emulsion, and shellac on canvas
(in two parts), with zinc and lead
130 x 218 1/2" (330 x 555 cm)Hirshhorn Museum and Sculpture Garden,
Smithsonian Institution, Washington, D.C.
Thomas M. Evans, Jerome L. Greene,
Joseph H. Hirshhorn, and Sydney and
Frances Lewis Purchase Fund
Cat. No. 73

The Red Sea, 1984-85

Das Rote Meer

Oil, emulsion, and shellac on photograph,
mounted on canvas, with woodcut and lead
109 1/4 x 167 3/8" (278.8 x 425.1 cm)The Museum of Modern Art, New York.
Enid A. Haupt Fund
Cat. No. 45

The Miracle of the Serpents, 1984-85

Das Schlangenwunder

Shellac and photographs on projection
paper
22 1/16 x 32 1/16" (58 x 83 cm)Collection of Dr. and Mrs. Konrad M.
Weis, Pittsburgh
Cat. No. 59

Departure from Egypt, 1984-85

Auszug aus Ägypten

Acrylic, charcoal, and photograph,
mounted on cardboard, with string
42 1/2 x 33" (108 x 84 cm)The Museum of Modern Art, New York.
Gift of the Denise and Andrew Saul Fund
Cat. No. 46

Emanation, 1984-85

Shellac on photograph, mounted on
cardboard, with lead

22 1/2 x 32" (57 x 81 cm)

Collection of Jerry and Emily Spiegel,
Kings Point, New York
Cat. No. 47

Palette with Wings, 1985

Palette mit Flügeln

Lead, steel, and tin

110 1/4 x 137 3/4 x 39 3/8" (280 x 350 x 100 cm)
(approximate)Private Collection
Cat. No. 11

Yggdrasil, 1985

Acrylic, emulsion, and shellac on
photograph, with lead

40 1/2 x 32 3/8" (102.9 x 83.5 cm)

Collection of Mr. and Mrs. Stephen H.
Frishberg, Radnor, Pennsylvania
Cat. No. 58

Untitled, 1980-86

Ohne Titel

Oil, acrylic, emulsion, shellac, and charcoal
on photograph, mounted on canvas, over
canvas (in three parts), with lead and steel

130 x 218 1/2" (330 x 555 cm)

Collection of Gerald S. Elliott, Chicago
Cat. No. 67

Emanation, 1984-86

Oil, acrylic, and emulsion on canvas (in
three parts), with lead
161 3/8 x 110 1/4" (410 x 280 cm)Collection of Céline and Heiner Bastian,
Berlin
NOT SHOWN N.Y.

Jerusalem, 1986

Acrylic, emulsion, shellac, and gold leaf on
canvas (in two parts), with steel and lead
150 x 220 1/2" (380 x 560 cm)Collection of Susan and Lewis Manilow,
Chicago
Cat. No. 68

Iron Path, 1986

Eisen-Steig

Oil, acrylic, and emulsion on canvas, with
olive branches, iron, and lead
86 3/8 x 149 3/8" (220 x 380 cm)Collection of Mr. and Mrs. David Pincus,
Wynnewood, Pennsylvania
Cat. No. 61

Saturn Time, 1986

Saturnzeit

Oil, acrylic, emulsion, shellac, crayon, and
photographs on canvas, with ferns and lead
110 1/4 x 130" (280 x 330 cm)Private Collection
Cat. No. 17

Fallen Pictures, 1986

Gefallene Bilder

Emulsion and photograph on cardboard,
mounted on lead

40 1/16 x 55 1/2" (102 x 141 cm)

Collection of Mr. and Mrs. David Pincus,
Wynnewood, Pennsylvania
Cat. No. 62

Midsummer Night, 1986

Johannisnacht

Acrylic, emulsion, and shellac on
cardboard, mounted on lead, with fern,
steel, and glass

39 3/8 x 55 1/2" (101 x 141 cm)

Private Collection
Cat. No. 19

Isis and Osiris, 1986

Isis und Osiris

Acrylic, emulsion, crayon, and photograph
on cardboard, mounted on lead, with steel
and glass

39 1/4 x 55 1/2" (101 x 141 cm)

Promised gift of Marion Stroud Swingle
to the Philadelphia Museum of Art
Cat. No. 18

Osiris and Isis, 1985-87

Osiris und Isis

Oil, acrylic, and emulsion on canvas (in
two parts), with clay, porcelain, lead,
copper wire, and circuit board

150 x 220 1/2" (380 x 560 cm)

San Francisco Museum of Modern Art.
Purchased through a gift of Jean Stein, by
exchange, the Mrs. Paul L. Wattis Fund,
and the Doris and Donald Fisher Fund
Cat. No. 71

Thorough-Glow, 1985-87

Durch-Glühen

Twelve double-page photographic images,
with clay, shellac, copper wire, lead, and
porcelain, mounted on cardboard and
bound

27 1/2 x 20 x 3 1/4" (70 x 50.5 x 8.4 cm)

Private Collection
Cat. No. 75

Siegfried Forgets Brunhilde, 1987

Siegfried vergisst Brünhilde

Seven double-page lead sheets, with clay
and graphite, mounted on cardboard and
bound

27 1/2 x 14 3/4 x 1 1/2" (71 x 50 x 4 cm)

Collection of Mr. and Mrs. Stewart
Resnick, Newtown Square, Pennsylvania
Cat. No. 64

The Birth of the Sun, 1987

Die Geburt der Sonne

Nineteen double-page photographic
images, with clay, acrylic, silver, copper,
porcelain, and ink, mounted on cardboard
and bound

27 1/2 x 19 1/4 x 6" (70 x 50 x 15 cm)

Collection of Thomas and Shirley Davis,
Woodside, California
Cat. No. 72

Women of the Revolution, 1986

Die Frauen der Revolution

Emulsion and crayon on lead,
mounted on chipboard,
with lilies of the valley, rose,
lead and glass

130 x 236 1/4" (330 x 600 cm)

Stedelijk museum,
AmsterdamPhiladelphia, Los Angeles and
New York only.

Cat. No. 20

MIDSUMMER NIGHT, 1986

Johannisnacht

Fern + Photograph mounted on
lead treated with acid.

81 3/4" x 38 1/2" (207.8 cm x 97.9 cm)

PRIVATE COLLECTION
(NEW YORK ONLY)

SIEGFRIED FORGETS BRUNHILDE, 1986

Siegfried vergisst Brünhilde

Charcoal, lilies of the valley on lead
treated with acid.

38 1/2" x 81 1/2" (97.9 cm x 207.0 cm)

Private Collection
(NEW YORK ONLY)

The following are the annotated pages with additional information.

The Museum of Modern Art Archives, NY	Collection:	Series.Folder:
	MoMA Exhs.	1498.1

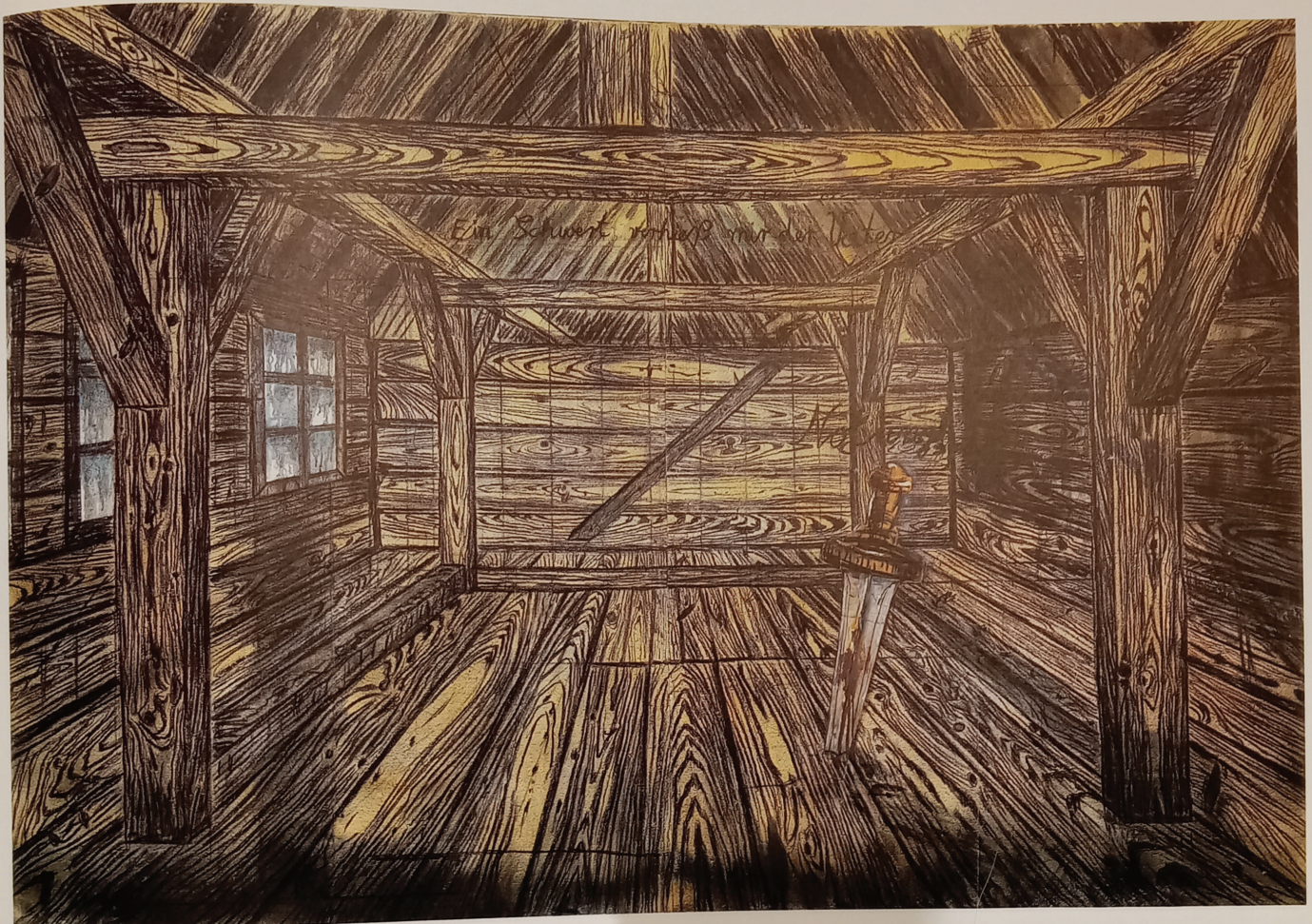


Plate 8

Nothung, 1973

Notung

Oil and charcoal on burlap, with
oil and charcoal on cardboard

118 $\frac{1}{8}$ x 170" (300 x 432 cm)

Museum Boymans-van

Beuningen, Rotterdam

NOT SHOWN N.Y.



The Museum of Modern Art Archives, NY	Collection:	Series.Folder:
	MoMA Exhs.	1498.1

Plate 9

Father, Son, Holy Ghost, 1973.

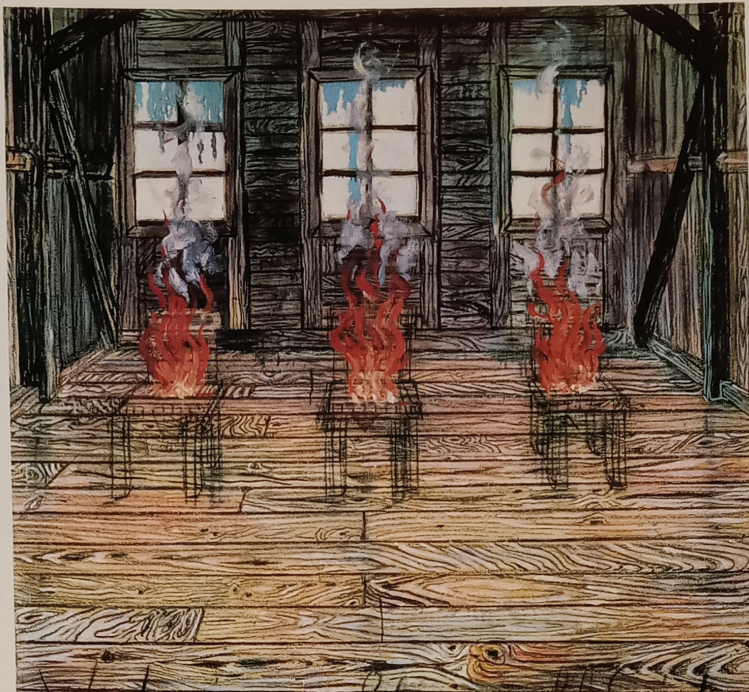
Vater, Sohn, heiliger Geist

Oil and charcoal on burlap

114 x 74³/₄" (290 x 190 cm)

Private Collection, Amsterdam

NOT SHOWN N.Y.



The Museum of Modern Art Archives, NY	Collection:	Series.Folder:
	MoMA Exhs.	1498.1



Plate 13
March Heath, 1974
Märkische Heide
Oil, acrylic, and shellac on burlap
46½ x 100" (118 x 254 cm)
Van Abbemuseum, Eindhoven,
The Netherlands
NOT SHOWN N.Y.

... (French, born Ger-
... (London, 1925; Pencil
... (12.5 x 70.3 cm). Collec-
... Zurich.

... (Kiefer, Operation Wi-
... (Wintergewitter"),
... (120 x 1
... Collection.

The Museum of Modern Art Archives, NY	Collection:	Series.Folder:
	MoMA Exhs.	1498.1



Plate 13
March Heath, 1974
Märkische Heide
Oil, acrylic, and shellac on burlap
46½ x 100" (118 x 254 cm)
Van Abbemuseum, Eindhoven,
The Netherlands

NOT SHOWN N.Y.



Wilhelm Kiefer, *Operation Winter*
(*Operation Wintergewitter*),
1974, 110 x 150 cm
oil on canvas

relationship
for like Go
master of b
summed wit

March Hea
prototype
high hori
a road is c
growth, s
significan
expanse.
ing, "mä
nerve fo
March E
located i
area is h
Theodo
denburg
but the
tance in
century
freque
was los
first K
a Font
to be e
who h
the he
event
Once
territ
Nazi
Addi
that
patr
for

Kie
ing
tali
att
nat
app
ha
at
th
at
pr

The Museum of Modern Art Archives, NY	Collection:	Series.Folder:
	MoMA Exhs.	1498.1



Plate 14
Operation Sea Lion I, 1975
Unternehmen "Seelöwe"
Oil on canvas
86 $\frac{3}{8}$ x 118 $\frac{1}{8}$ " (220 x 300 cm)
Collection of Norman and Irma
Braman, Miami Beach
NOT SHOWN NY

The Museum of Modern Art Archives, NY	Collection:	Series.Folder:
	MoMA Exhs.	1498.1



Plate 17
Varus, 1976
Oil and acrylic on burlap
78³/₄ x 106⁵/₁₆" (200 x 270 cm)
Van Abbemuseum, Eindhoven,
The Netherlands
NOT SHOWN N.Y.

The Museum of Modern Art Archives, NY	Collection:	Series.Folder:
	MoMA Exhs.	1498.1

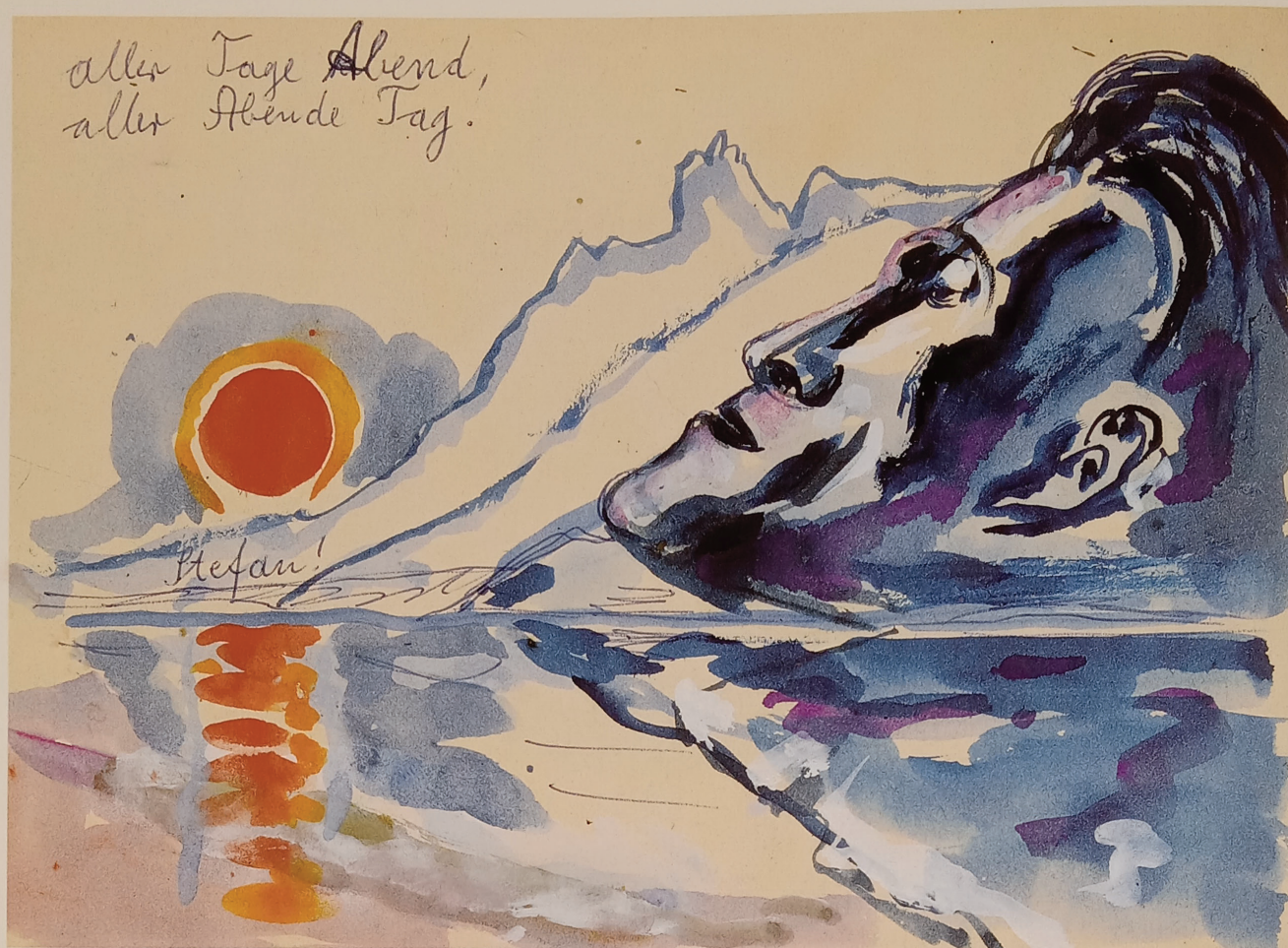


Plate 20

Stefan!, 1975

Watercolor and ball-point pen on
paper

8 $\frac{1}{16}$ x 11 $\frac{1}{4}$ " (20.5 x 28.5 cm)

Collection of Johannes Gachnang,

Bern

NOT SHOWN N.Y.

The Museum of Modern Art Archives, NY	Collection:	Series.Folder:
	MoMA Exhs.	1498.1



Plate 24

Nero Paints, 1974

Nero malt

Oil on canvas

86 $\frac{7}{8}$ x 118 $\frac{1}{8}$ " (220 x 300 cm)

Staatsgalerie Moderner Kunst,

Munich. On loan from the

Wittelsbach Settlement Fund,

Prince Franz von Bayern

Collection

NOT SHOWN N.Y.

The Museum of Modern Art Archives, NY	Collection:	Series.Folder:
	MoMA Exhs.	1498.1



Plate 25
Painting = Burning, 1974
Malen = Verbrennen
Oil on burlap
86 $\frac{3}{8}$ x 118 $\frac{1}{8}$ " (220 x 300 cm)
Collection of Jerry and Emily
Spiegel, Kings Point, New York
NOT SHOWN N.Y.



Plate 25
The Painting, 1974
Malen
Oil and shellac on burlap
86 3/8" x 118 1/8" (220 x 300 cm)
Family H. de Groot Collection
Groningen, The Netherlands
Cat. No. 29

The Museum of Modern Art Archives, NY	Collection:	Series.Folder:
	MoMA Exhs.	1498.1



Plate 35

Iconoclastic Controversy, 1980

Bilder-Streit

Oil, emulsion, shellac, and sand
on photograph, mounted on
canvas, with woodcut

114 $\frac{1}{8}$ x 157 $\frac{1}{2}$ " (290 x 400 cm)

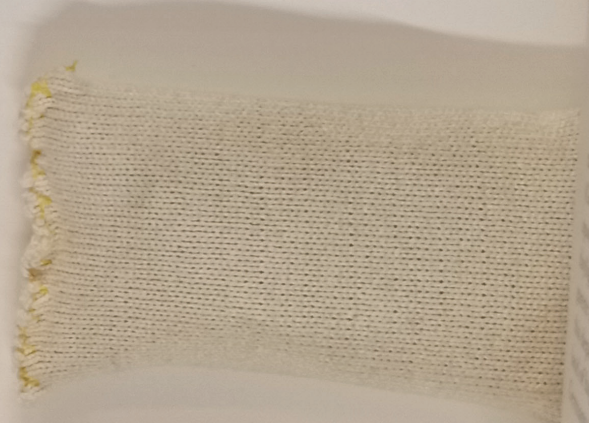
Museum Boymans-van
Beuningen, Rotterdam

NOT SHOWN N.Y.

The Museum of Modern Art Archives, NY	Collection:	Series.Folder:
	MoMA Exhs.	1498.1



Plate 47
Margarete, 1981
Margarete
Oil and straw on canvas
110 x 149⁵/₈" (280 x 380 cm)
Saatchi Collection, London
NOT SHOWN N.Y.



The Museum of Modern Art Archives, NY	Collection:	Series.Folder:
	MoMA Exhs.	1498.1



Plate 50

The Mastersingers, 1981

Die Meistersinger

Oil, acrylic, and straw on canvas

72¹³/₁₆ x 129¹⁵/₁₆" (185 x 330 cm)

Saatchi Collection, London

NOT SHOWN N.Y.

The Museum of Modern Art Archives, NY	Collection:	Series.Folder:
	MoMA Exhs.	1498.1



Plate 51

The Mastersingers, 1981

Die Meistersinger

Oil, acrylic, emulsion, and straw
on canvas

72⁷/₁₆ x 130" (184 x 330 cm)

Collection of Linda and Harry
Macklowe, New York

NOT SHOWN N.Y.

The Museum of Modern Art Archives, NY	Collection:	Series.Folder:
	MoMA Exhs.	1498.1



Plate 52

Your Golden Hair, Margarete—

Midsummer Night, 1981

Dein goldenes Haar, Margarete—

Johannis-Nacht

Oil, acrylic, emulsion, and straw
on canvas

51½ x 63" (130 x 160 cm)

Private Collection, New York

NOT SHOWN N.Y.

The Museum of Modern Art Archives, NY	Collection:	Series.Folder:
	MoMA Exhs.	1498.1



Plate 61

To the Unknown Painter, 1983

Dem unbekanntem Maler

Oil, aquatex, latex, emulsion,
shellac, and straw on canvas

81⁷/₈ x 150" (208 x 381 cm)

Collection of Céline and Heiner

Bastian, Berlin

NOT SHOWN NY

The Museum of Modern Art Archives, NY	Collection:	Series.Folder:
	MoMA Exhs.	1498.1



Plate 62

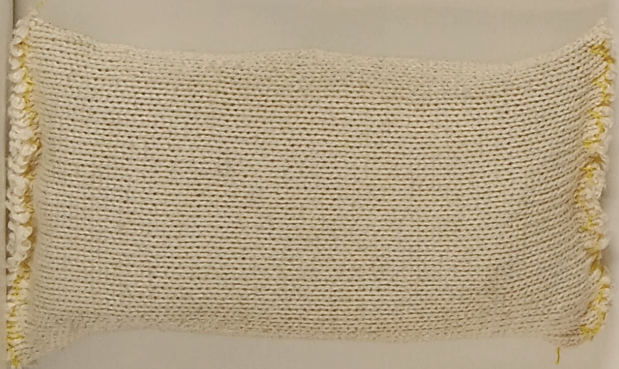
Atbanor, 1983–84

Oil, acrylic, emulsion, shellac,
and straw on photograph,
mounted on canvas

88½ x 149⅝" (225 x 380 cm)

Collection Sanders, Amsterdam

NOT SHOWN NY



The Museum of Modern Art Archives, NY	Collection:	Series.Folder:
	MoMA Exhs.	1498.1



Plate 64

Women of the Revolution, 1986

Die Frauen der Revolution

Emulsion and crayon on lead,
mounted on chipboard, with lilies
of the valley, rose, lead, and glass

110¹/₄ x 185" (280 x 470 cm)

Stedelijk Museum, Amsterdam

ILLUS. ONLY

The Museum of Modern Art Archives, NY	Collection:	Series.Folder:
	MoMA Exhs.	1498.1

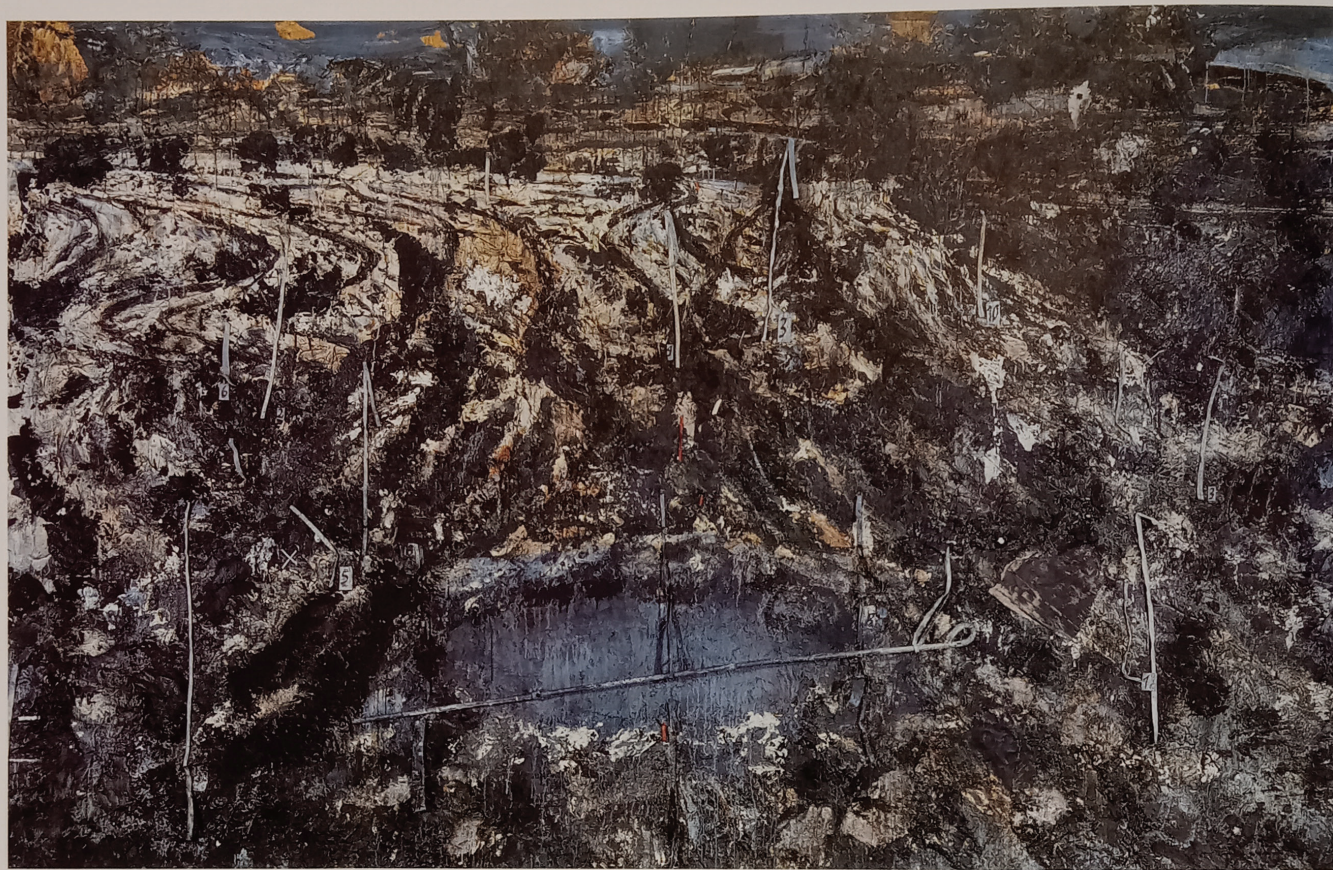


Plate 67

Aaron, 1984-85

Oil, acrylic, emulsion, and shellac
on canvas, with lead, woodcut,
and cardboard

130 x 196⁷/₈" (330 x 500 cm)

Collection of Norman and Irma

Braman, Miami Beach

NOT SHOWN N.Y.

The Museum of Modern Art Archives, NY	Collection:	Series.Folder:
	MoMA Exhs.	1498.1

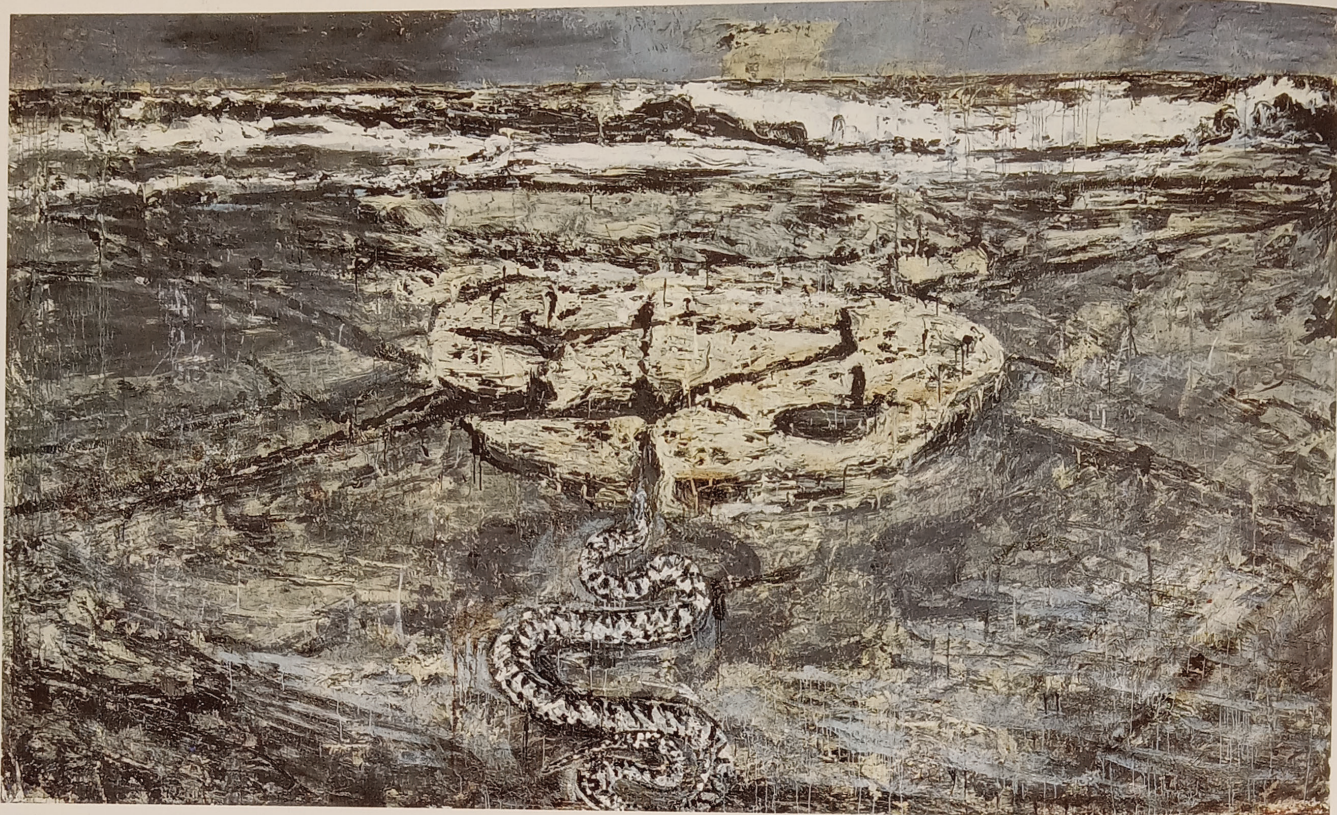


Plate 71

Midgard, 1980-85

Oil, acrylic, emulsion, and shellac
on photograph, mounted on
canvas (in three parts)

14 1/4 x 23 7/4" (360 x 604 cm)

The Carnegie Museum of Art,
Pittsburgh. Museum purchase
with funds from Kaufmann's, the
Women's Committee of the
Museum of Art, and the Fellows
of the Museum of Art

NOT SHOWN N.Y.