

## **CONDITIONS OF USE FOR THIS PDF**

The images contained within this PDF may be used for private study, scholarship, and research only. They may not be published in print, posted on the internet, or exhibited. They may not be donated, sold, or otherwise transferred to another individual or repository without the written permission of The Museum of Modern Art Archives.

When publication is intended, publication-quality images must be obtained from SCALA Group, the Museum's agent for licensing and distribution of images to outside publishers and researchers.

If you wish to quote any of this material in a publication, an application for permission to publish must be submitted to the MoMA Archives. This stipulation also applies to dissertations and theses. All references to materials should cite the archival collection and folder, and acknowledge "The Museum of Modern Art Archives, New York."

Whether publishing an image or quoting text, you are responsible for obtaining any consents or permissions which may be necessary in connection with any use of the archival materials, including, without limitation, any necessary authorizations from the copyright holder thereof or from any individual depicted therein.

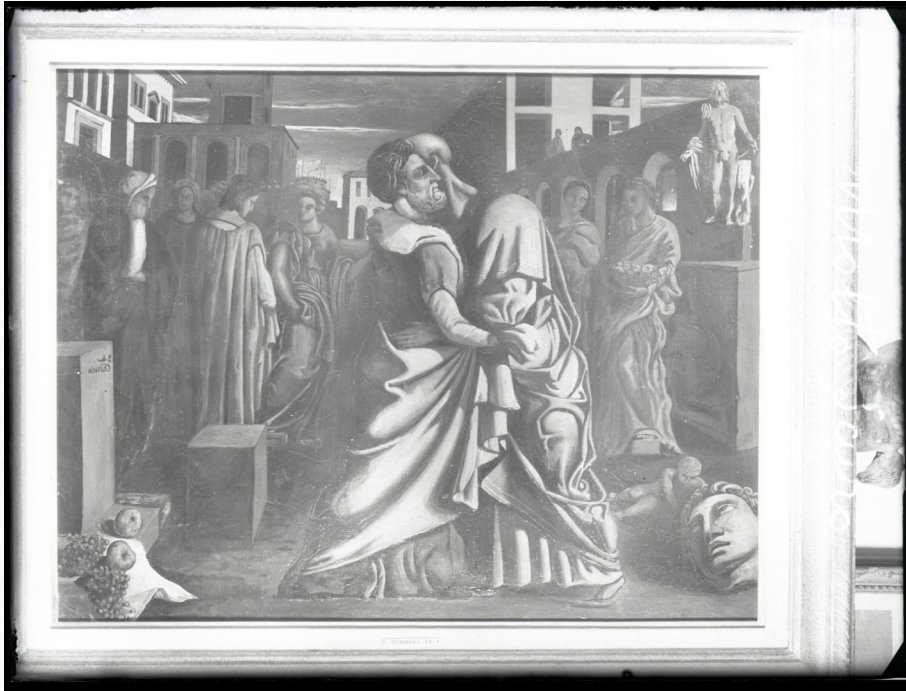
In requesting and accepting this reproduction, you are agreeing to indemnify and hold harmless The Museum of Modern Art, its agents and employees against all claims, demands, costs and expenses incurred by copyright infringement or any other legal or regulatory cause of action arising from the use of this material.

### **NOTICE: WARNING CONCERNING COPYRIGHT RESTRICTIONS**

The copyright law of the United States (Title 17, United States Code) governs the making of photocopies or other reproductions of copyrighted material. Under certain conditions specified in the law, libraries and archives are authorized to furnish a photocopy or other reproduction. One of these specified conditions is that the photocopy or reproduction is not to be "used for any purpose other than private study, scholarship, or research." If a user makes a request for, or later uses, a photocopy or reproduction for purposes in excess of "fair use," that user may be liable for copyright infringement.

FOR STUDY PURPOSES ONLY. NOT FOR REPRODUCTION.

The Museum of Modern Art Archives, NY	Collection:	Series.Folder:
	JTS	II.H.12



FOR STUDY PURPOSES ONLY. NOT FOR REPRODUCTION.

The Museum of Modern Art Archives, NY	Collection:	Series.Folder:
	JTS	II.H.12



FOR STUDY PURPOSES ONLY. NOT FOR REPRODUCTION.

The Museum of Modern Art Archives, NY	Collection:	Series.Folder:
	JTS	II.H.12



FOR STUDY PURPOSES ONLY. NOT FOR REPRODUCTION.

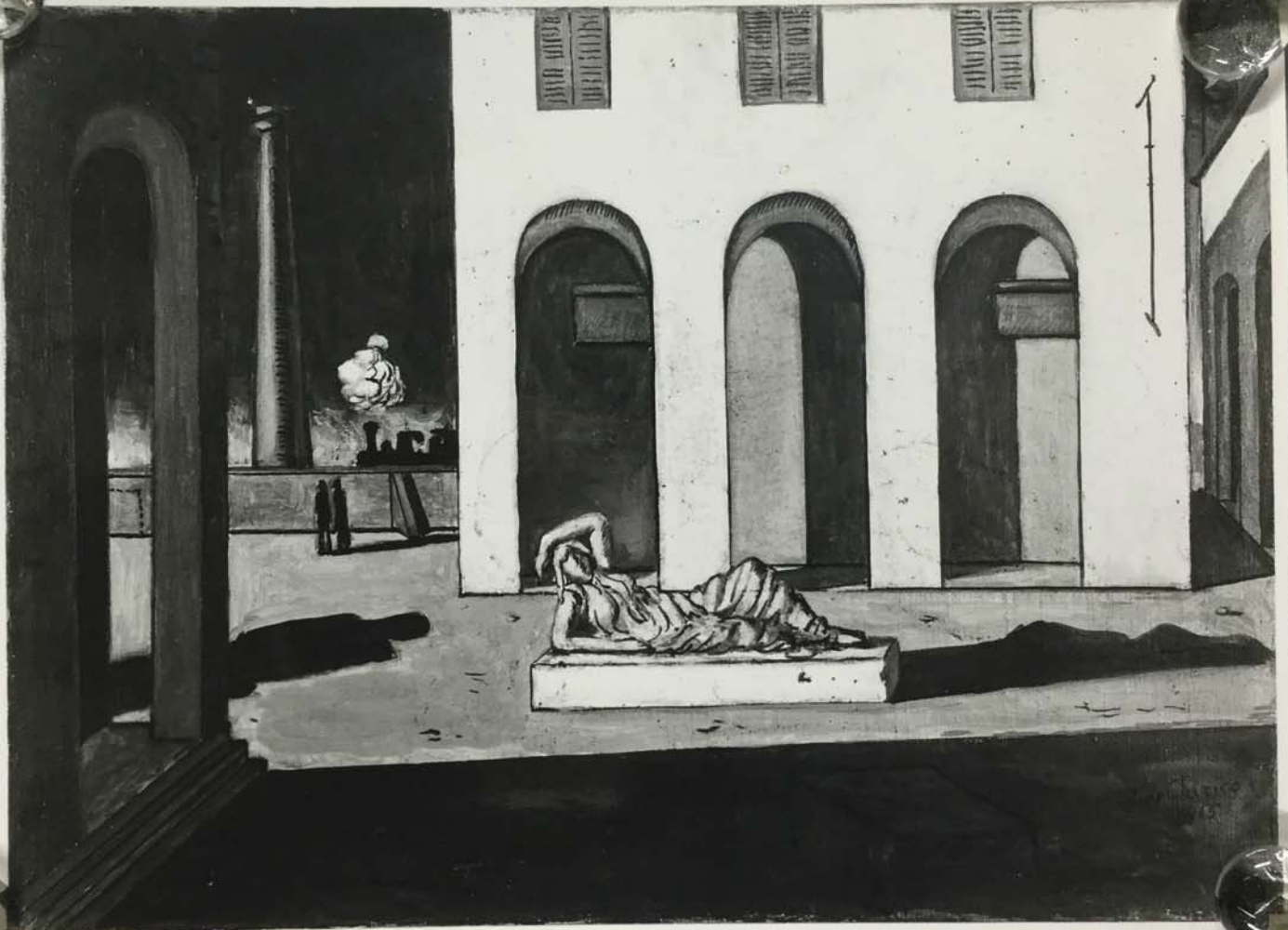
The Museum of Modern Art Archives, NY	Collection:	Series.Folder:
	JTS	II.H.12

*Coll Matla*

Photographed for The Museum of Modern Art  
by Soichi Sunami. If reproduced, credit  
must be given The Museum of Modern Art.

FOR STUDY PURPOSES ONLY. NOT FOR REPRODUCTION.

The Museum of Modern Art Archives, NY	Collection:	Series.Folder:
	JTS	II.H.12



FOR STUDY PURPOSES ONLY. NOT FOR REPRODUCTION.

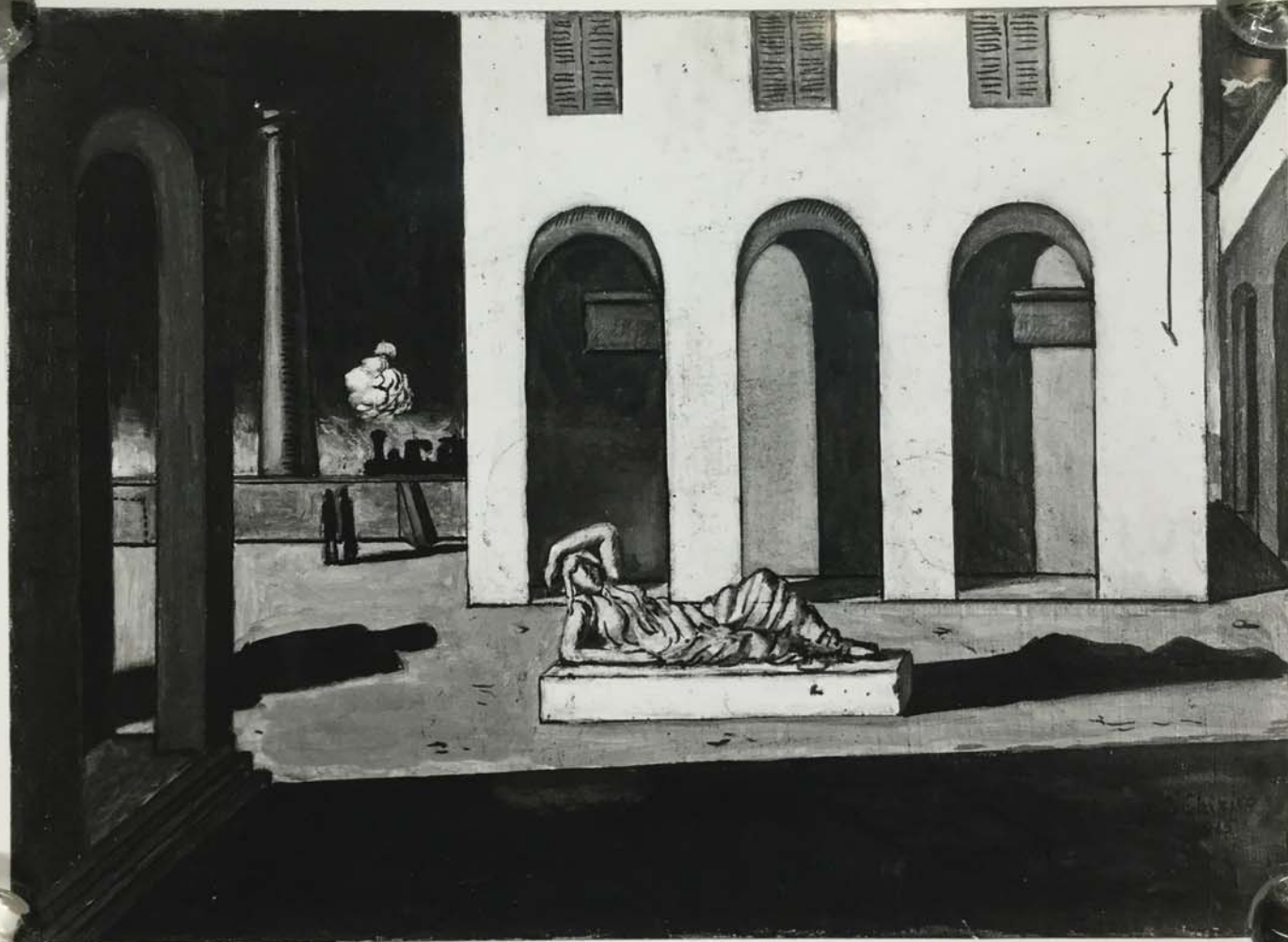
The Museum of Modern Art Archives, NY	Collection:	Series.Folder:
	JTS	II.H.12

S-15.493

Photographed for The Museum of Modern Art  
by Soichi Sunami. If reproduced, credit  
must be given The Museum of Modern Art.

FOR STUDY PURPOSES ONLY. NOT FOR REPRODUCTION.

The Museum of Modern Art Archives, NY	Collection:	Series.Folder:
	JTS	II.H.12



FOR STUDY PURPOSES ONLY. NOT FOR REPRODUCTION.

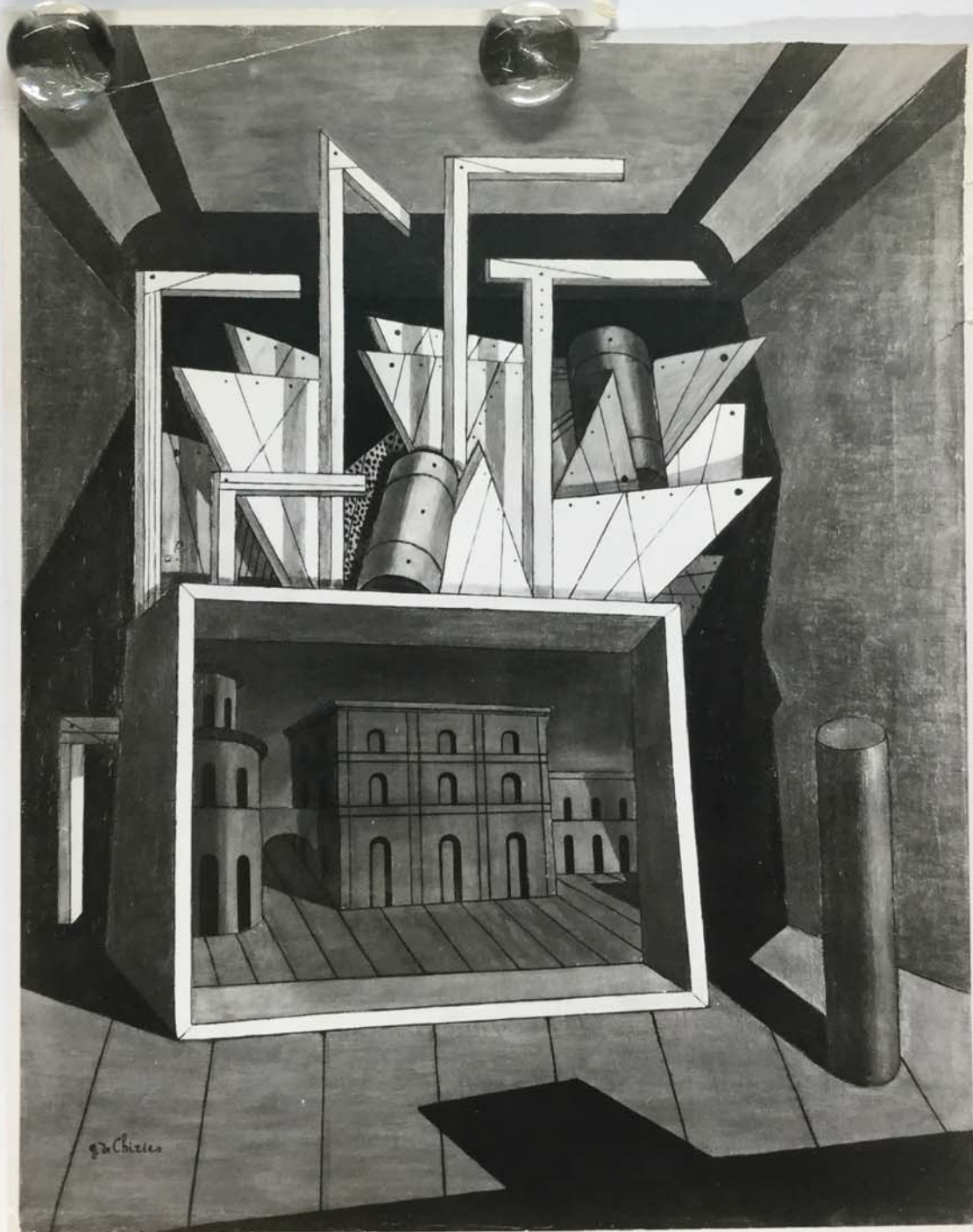
The Museum of Modern Art Archives, NY	Collection:	Series.Folder:
	JTS	II.H.12

S-15.493

Photographed for The Museum of Modern Art  
by Seichi Sunami. If reproduced, credit  
must be given The Museum of Modern Art.

FOR STUDY PURPOSES ONLY. NOT FOR REPRODUCTION.

The Museum of Modern Art Archives, NY	Collection:	Series Folder:
	JTS	II. H. 12



FOR STUDY PURPOSES ONLY. NOT FOR REPRODUCTION.

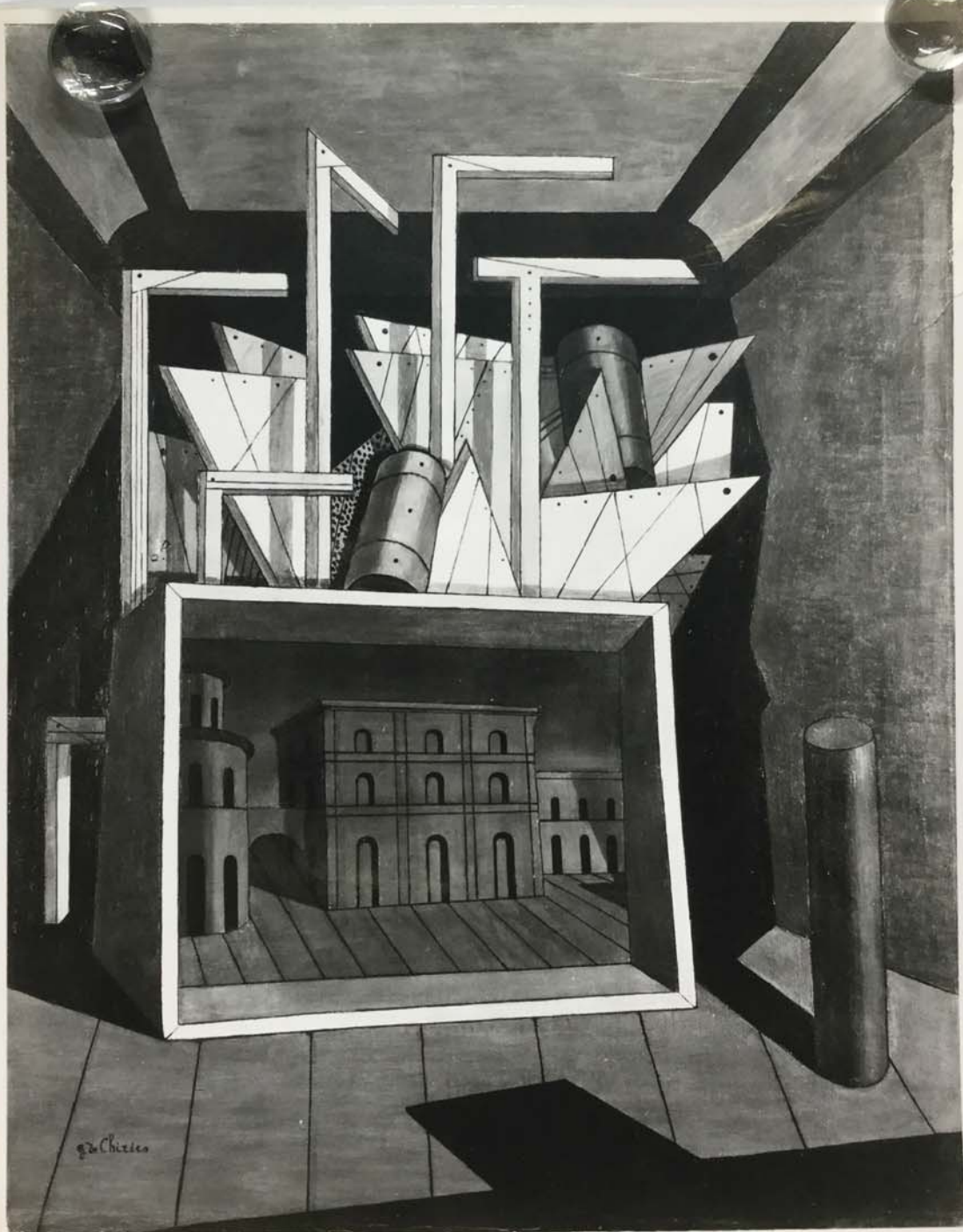
The Museum of Modern Art Archives, NY	Collection:	Series.Folder:
	JTS	II.H.12

S-157491

Photographed for The Museum of Modern Art  
by Soichi Sunami. If reproduced, credit  
must be given The Museum of Modern Art.

FOR STUDY PURPOSES ONLY. NOT FOR REPRODUCTION.

The Museum of Modern Art Archives, NY	Collection:	Series.Folder:
	JTS	II.H.12



FOR STUDY PURPOSES ONLY. NOT FOR REPRODUCTION.

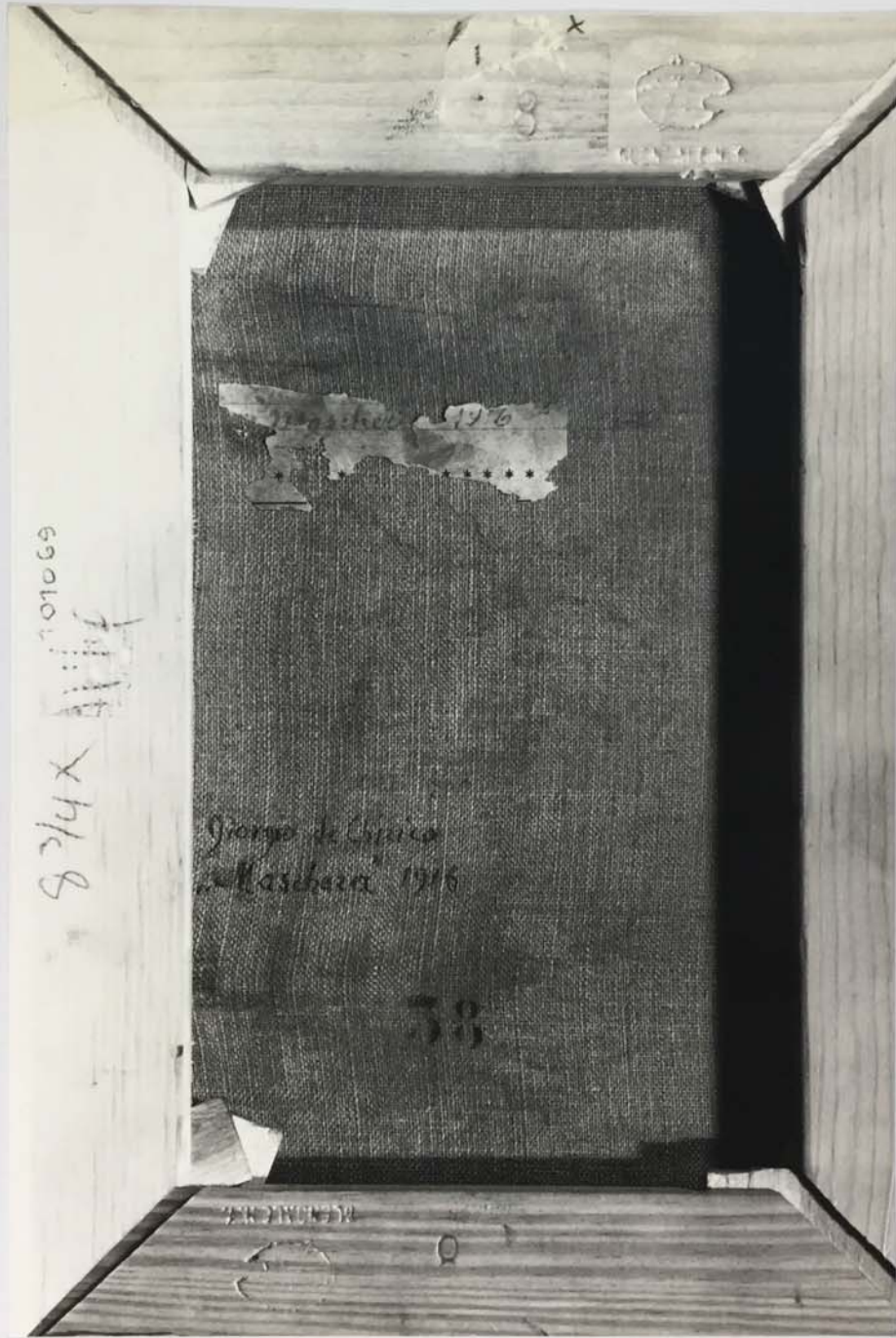
The Museum of Modern Art Archives, NY	Collection:	Series.Folder:
	JTS	II.H.12

S-15.491

Photographed for The Museum of Modern Art  
by Seichi Sunami. If reproduced, credit  
must be given The Museum of Modern Art.

FOR STUDY PURPOSES ONLY. NOT FOR REPRODUCTION.

The Museum of Modern Art Archives, NY	Collection:	Series.Folder:
	JTS	II.H.12



FOR STUDY PURPOSES ONLY. NOT FOR REPRODUCTION.

The Museum of Modern Art Archives, NY	Collection:	Series.Folder:
	JTS	II.H.12



FOR STUDY PURPOSES ONLY. NOT FOR REPRODUCTION.

The Museum of Modern Art Archives, NY	Collection:	Series.Folder:
	JTS	II.H.12

8

S13563

For study purposes only.  
No reproduction without permission

de CHIRICO, Giorgio.  
The Enigma of a Day. 1914.  
Oil on canvas, 72 3/4 x 55 1/2".  
Collection James Thrall Soby.

5 13,563

FOR STUDY PURPOSES ONLY. NOT FOR REPRODUCTION.

The Museum of Modern Art Archives, NY	Collection:	Series.Folder:
	JTS	II.H.12



FOR STUDY PURPOSES ONLY. NOT FOR REPRODUCTION.

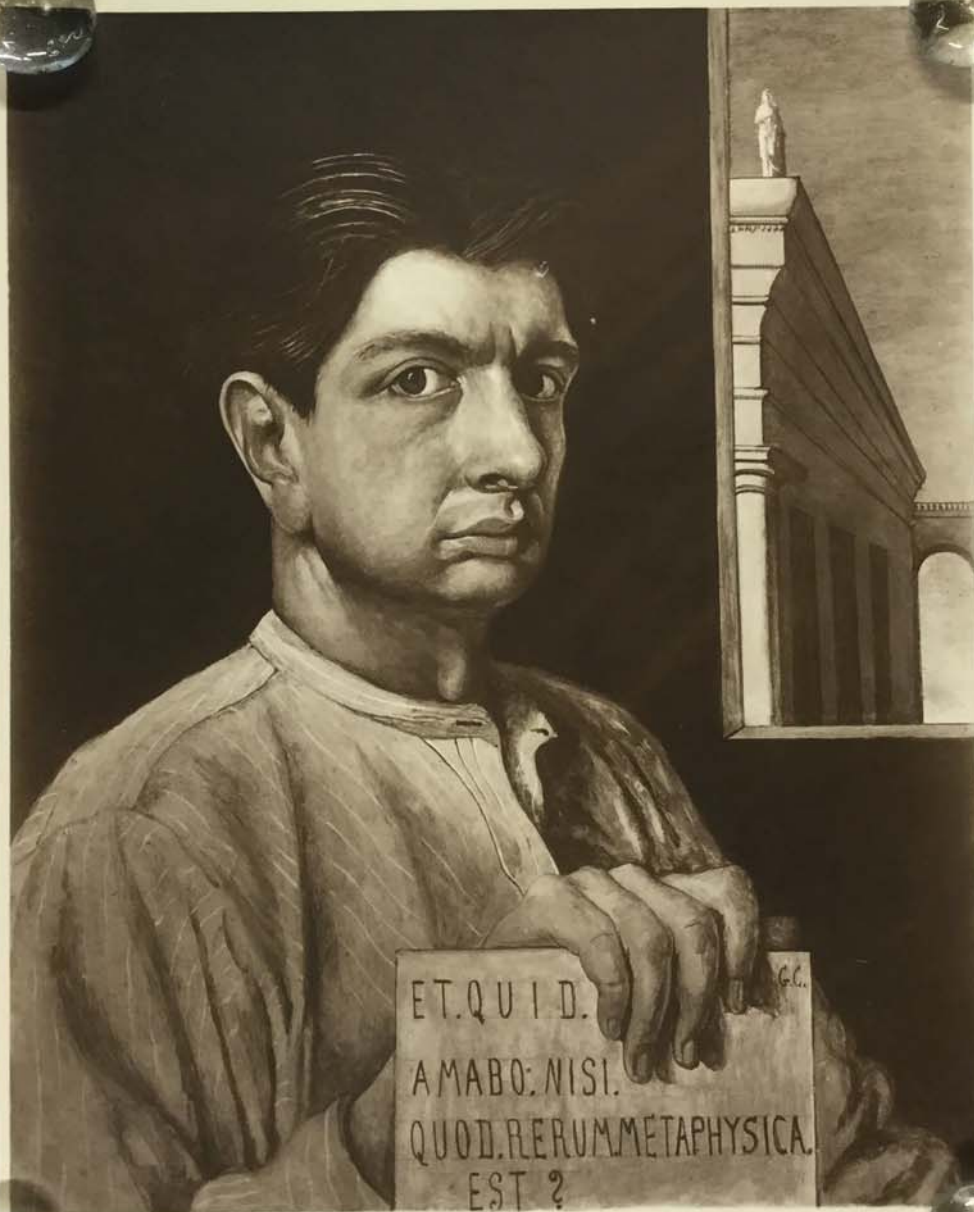
The Museum of Modern Art Archives, NY	Collection:	Series.Folder:
	JTS	II.H.12

(30)

Cosimo Ridolfi  
Piazza San Spirito, Florence  
JTS  
statue d. 1896

FOR STUDY PURPOSES ONLY. NOT FOR REPRODUCTION.

The Museum of Modern Art Archives, NY	Collection:	Series.Folder:
	JTS	II.H.12



FOR STUDY PURPOSES ONLY. NOT FOR REPRODUCTION.

The Museum of Modern Art Archives, NY	Collection:	Series.Folder:
	JTS	II.H.12

*Autoritatto - No 1*

*De Viris -*

*Autoritatto -*

*← Om 13 →*

FOR STUDY PURPOSES ONLY. NOT FOR REPRODUCTION.

The Museum of Modern Art Archives, NY	Collection:	Series.Folder:
	JTS	II.H.12



FOR STUDY PURPOSES ONLY. NOT FOR REPRODUCTION.

The Museum of Modern Art Archives, NY	Collection:	Series.Folder:
	JTS	II.H.12

Giorgio de Chirico

Natura morta

coll. Gualino, Roma

1919

✓

Photography by Studio d'Arte Palma, Roma.

0,29 x 0,46

FOR STUDY PURPOSES ONLY. NOT FOR REPRODUCTION.

The Museum of Modern Art Archives, NY	Collection:	Series.Folder:
	JTS	II.H.12



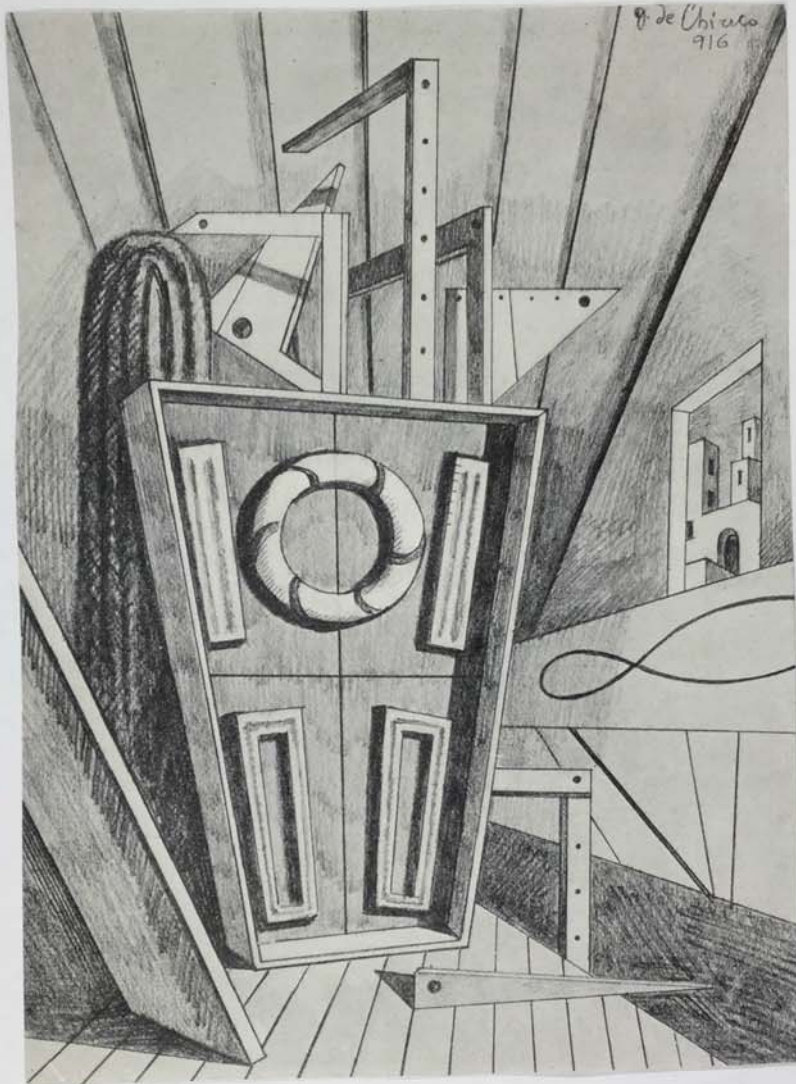
FOR STUDY PURPOSES ONLY. NOT FOR REPRODUCTION.

The Museum of Modern Art Archives, NY	Collection:	Series.Folder:
	JTS	II.H.12

*La Melancolie (1917)*  
*drawing 8 <sup>5</sup>/<sub>8</sub> x 12 <sup>1</sup>/<sub>4</sub>*  
*coll Paul W. Cooley*

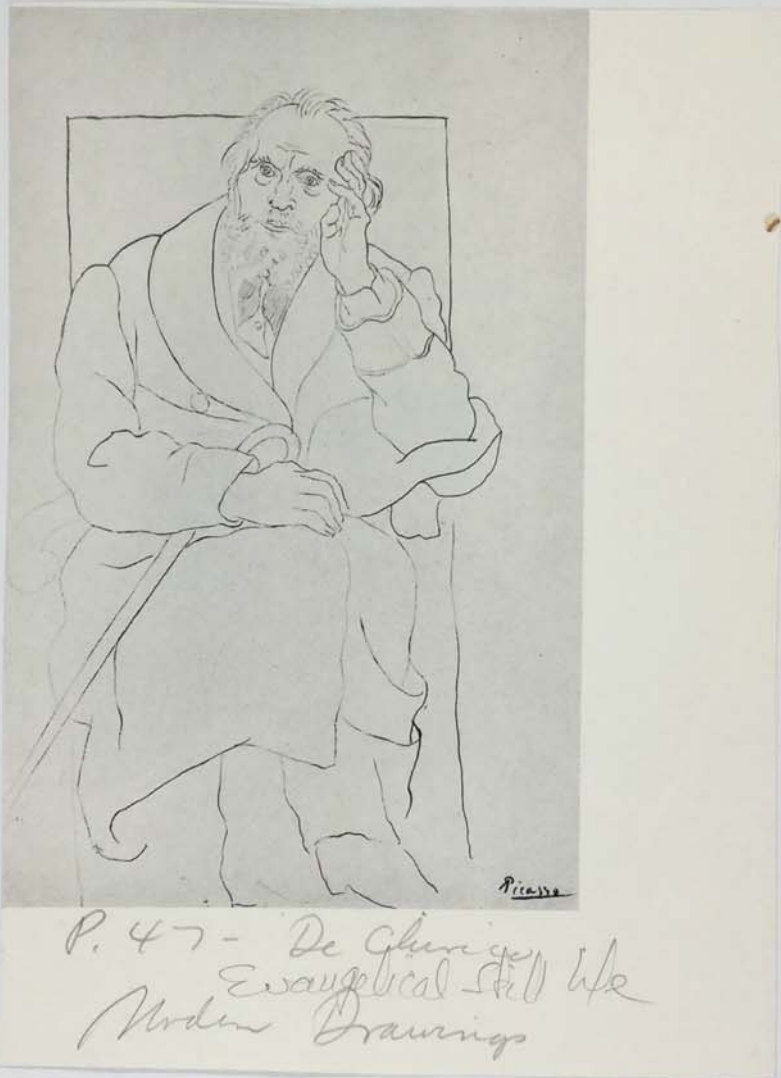
FOR STUDY PURPOSES ONLY. NOT FOR REPRODUCTION.

The Museum of Modern Art Archives, NY	Collection:	Series.Folder:
	JTS	II.H.12



FOR STUDY PURPOSES ONLY. NOT FOR REPRODUCTION.

The Museum of Modern Art Archives, NY	Collection:	Series.Folder:
	JTS	II.H.12



FOR STUDY PURPOSES ONLY. NOT FOR REPRODUCTION.

The Museum of Modern Art Archives, NY	Collection:	Series.Folder:
	JTS	II.H.12



FOR STUDY PURPOSES ONLY. NOT FOR REPRODUCTION.

The Museum of Modern Art Archives, NY	Collection:	Series.Folder:
	JTS	II.H.12

Clivio -

Hoto + Androuse

Galvin - pl 56

FOR STUDY PURPOSES ONLY. NOT FOR REPRODUCTION.

The Museum of Modern Art Archives, NY	Collection:	Series.Folder:
	JTS	II.H.12



FOR STUDY PURPOSES ONLY. NOT FOR REPRODUCTION.

The Museum of Modern Art Archives, NY	Collection:	Series.Folder:
	JTS	II.H.12

Clivio  
Romanella

Wahau - pl 55

FOR STUDY PURPOSES ONLY. NOT FOR REPRODUCTION.

The Museum of Modern Art Archives, NY	Collection:	Series.Folder:
	JTS	II.H.12



FOR STUDY PURPOSES ONLY. NOT FOR REPRODUCTION.

The Museum of Modern Art Archives, NY	Collection:	Series.Folder:
	JTS	II.H.12

Clairice  
Fraud Urologist

Halow - p 36 1/2 2012 (M)

FOR STUDY PURPOSES ONLY. NOT FOR REPRODUCTION.

The Museum of Modern Art Archives, NY	Collection:	Series.Folder:
	JTS	II.H.12





FOR STUDY PURPOSES ONLY. NOT FOR REPRODUCTION.

The Museum of Modern Art Archives, NY	Collection:	Series.Folder:
	JTS	II.H.12



FOR STUDY PURPOSES ONLY. NOT FOR REPRODUCTION.

The Museum of Modern Art Archives, NY	Collection:	Series.Folder:
	JTS	II.H.12

31 x 24<sup>3</sup>/<sub>4</sub> inches

Title: La punition de l'omniscience

date: 1926

Renou et Colle

or

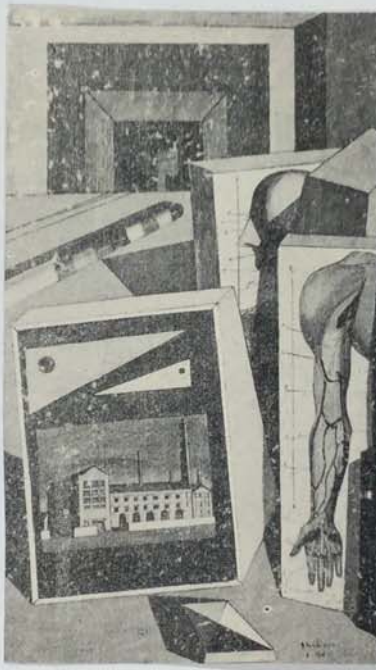
Gallery Roussos  
rue de Seine

n° 1680

PHOTO  
CAUVIN  
46, Rue du Bac, PARIS-7<sup>e</sup>  
Litré 60-41

FOR STUDY PURPOSES ONLY. NOT FOR REPRODUCTION.

The Museum of Modern Art Archives, NY	Collection:	Series.Folder:
	JTS	II.H.12



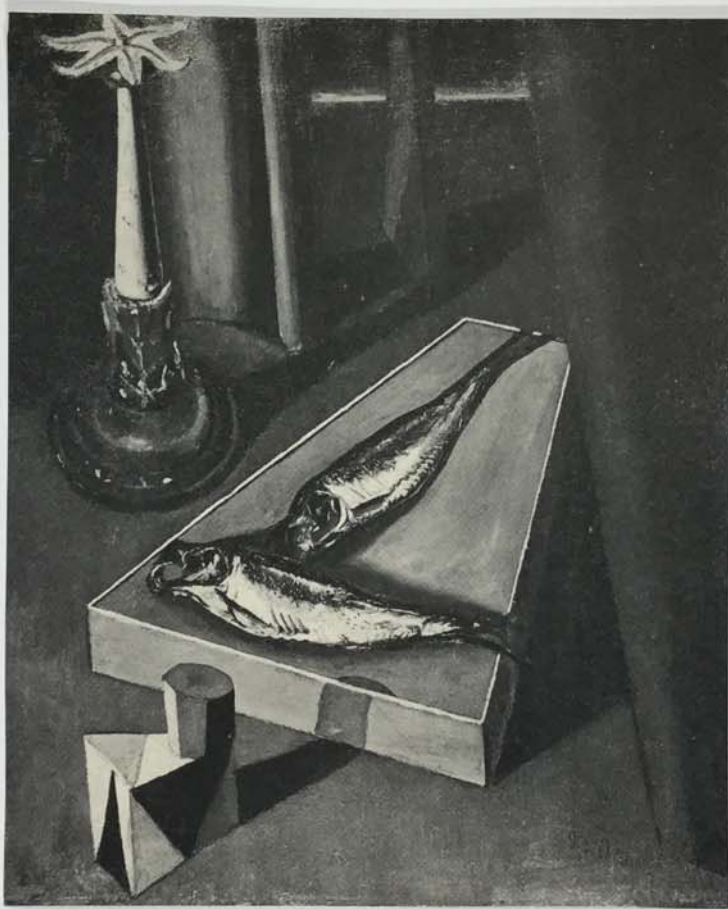
FOR STUDY PURPOSES ONLY. NOT FOR REPRODUCTION.

The Museum of Modern Art Archives, NY	Collection:	Series.Folder:
	JTS	II.H.12

Chirico  
Boys of a  
Philosopher  
  
Faulstich '18 p. 120

FOR STUDY PURPOSES ONLY. NOT FOR REPRODUCTION.

The Museum of Modern Art Archives, NY	Collection:	Series.Folder:
	JTS	II.H.12



FOR STUDY PURPOSES ONLY. NOT FOR REPRODUCTION.

The Museum of Modern Art Archives, NY	Collection:	Series.Folder:
	JTS	II.H.12

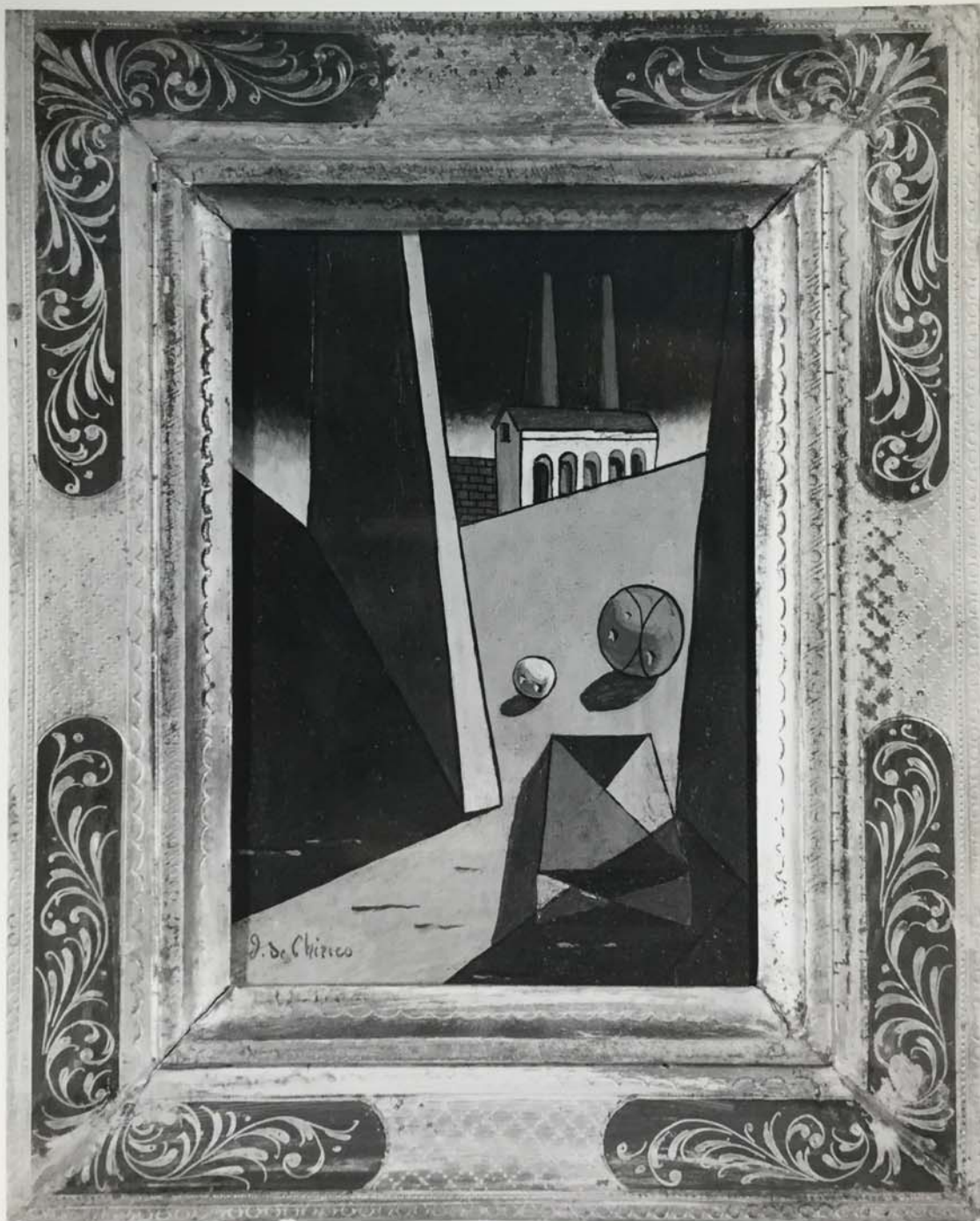
Chirico -

Sacred Fish

Atalbas

FOR STUDY PURPOSES ONLY. NOT FOR REPRODUCTION.

The Museum of Modern Art Archives, NY	Collection:	Series.Folder:
	JTS	II.H.12



FOR STUDY PURPOSES ONLY. NOT FOR REPRODUCTION.

The Museum of Modern Art Archives, NY	Collection:	Series.Folder:
	JTS	II.H.12

Sold Kende Galleries, NY  
Feb 3, 1949

c. 6" x 4"

foreground reddish?

FOR STUDY PURPOSES ONLY. NOT FOR REPRODUCTION.

The Museum of Modern Art Archives, NY	Collection:	Series.Folder:
	JTS	II.H.12



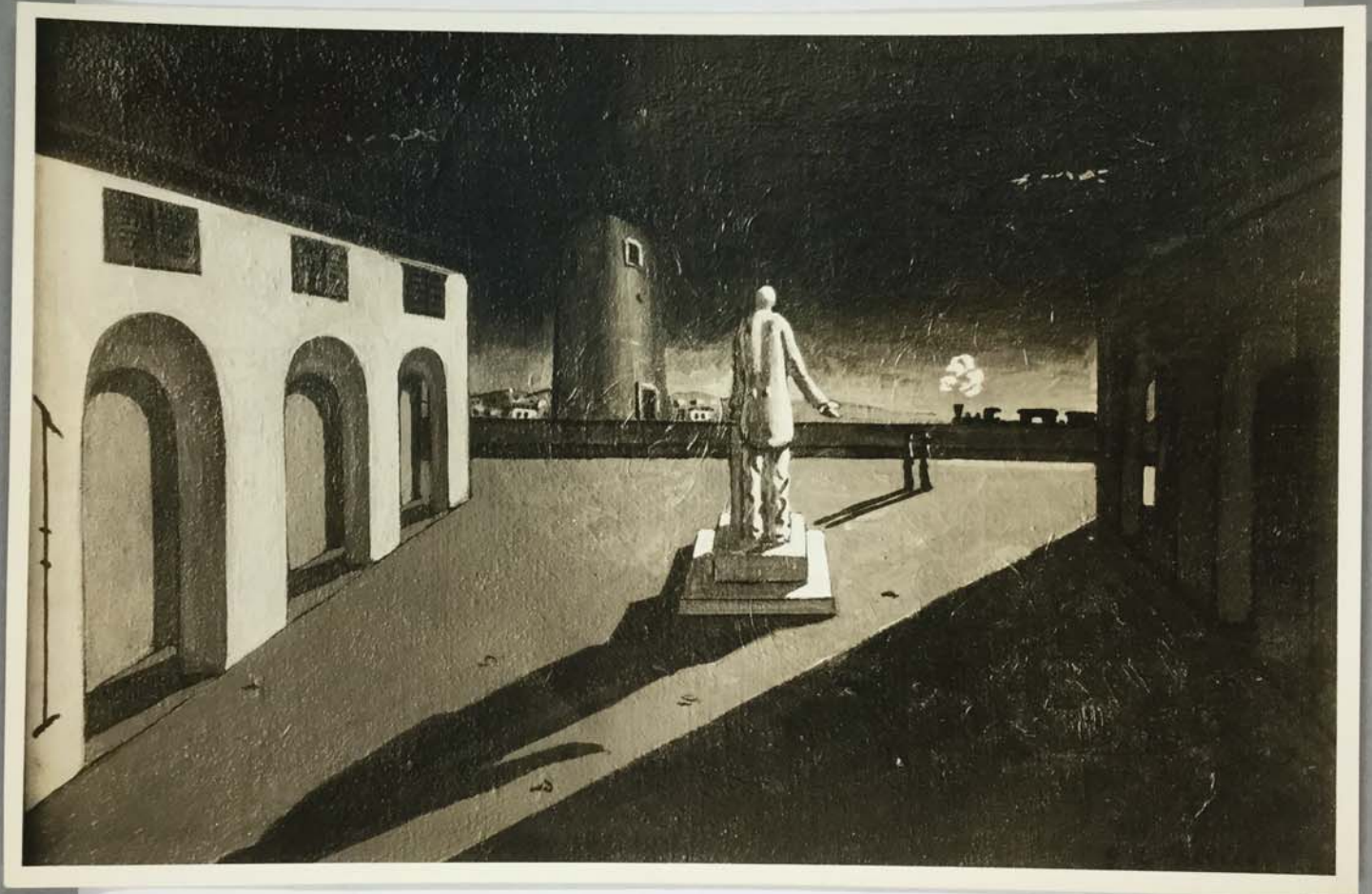
FOR STUDY PURPOSES ONLY. NOT FOR REPRODUCTION.

The Museum of Modern Art Archives, NY	Collection:	Series.Folder:
	JTS	II.H.12

Walsfield Gallery  
sold to Valentine Gallery  
about size of Double Stream of  
Spring (slightly larger)

FOR STUDY PURPOSES ONLY. NOT FOR REPRODUCTION.

The Museum of Modern Art Archives, NY	Collection:	Series.Folder:
	JTS	II.H.12



FOR STUDY PURPOSES ONLY. NOT FOR REPRODUCTION.

The Museum of Modern Art Archives, NY	Collection:	Series.Folder:
	JTS	II.H.12

The Piazza  
oil 1914  
Di Chirico

Seen at Wiesendorf, Jan. 12, 1946  
He had on commission from Amuseon  
who had bought it, was group of  
late drawings, from Calvia Magdalena,  
Rome Price \$7,400

May be late work by di Chirico, pedestal

~~20 1/4~~ x 13 1/4 x

19 3/4

FOR STUDY PURPOSES ONLY. NOT FOR REPRODUCTION.

The Museum of Modern Art Archives, NY	Collection: JTS	Series.Folder: II.H.12
---------------------------------------	--------------------	---------------------------



FOR STUDY PURPOSES ONLY. NOT FOR REPRODUCTION.

The Museum of Modern Art Archives, NY	Collection:	Series Folder:
	JTS	II.H.12

8/6

Grand intérieur métaphysique 1917

(27 - F  
medium)

GRAND METAPHYSICAL  
INTERIOR, 1917

68

6 1/4"

J. T. SOBY  
Farmington  
Connecticut

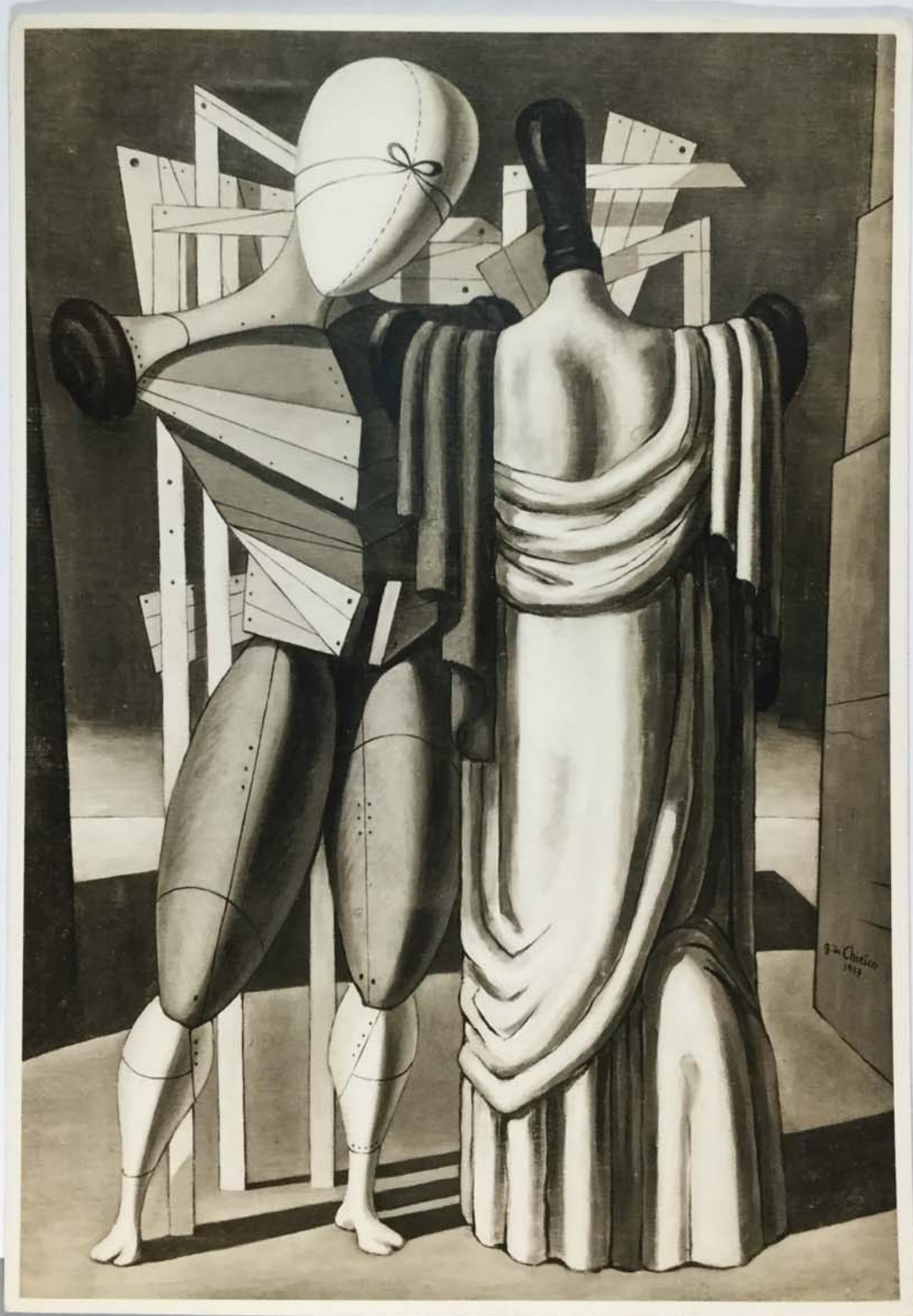
-5 1/2-

9752  
1330

SOICHI SUNAMI  
PHOTOGRAPHER  
ALBONDIN 4-4843  
87 W. 15TH ST. NEW YORK

FOR STUDY PURPOSES ONLY. NOT FOR REPRODUCTION.

The Museum of Modern Art Archives, NY	Collection:	Series.Folder:
	JTS	II.H.12



FOR STUDY PURPOSES ONLY. NOT FOR REPRODUCTION.

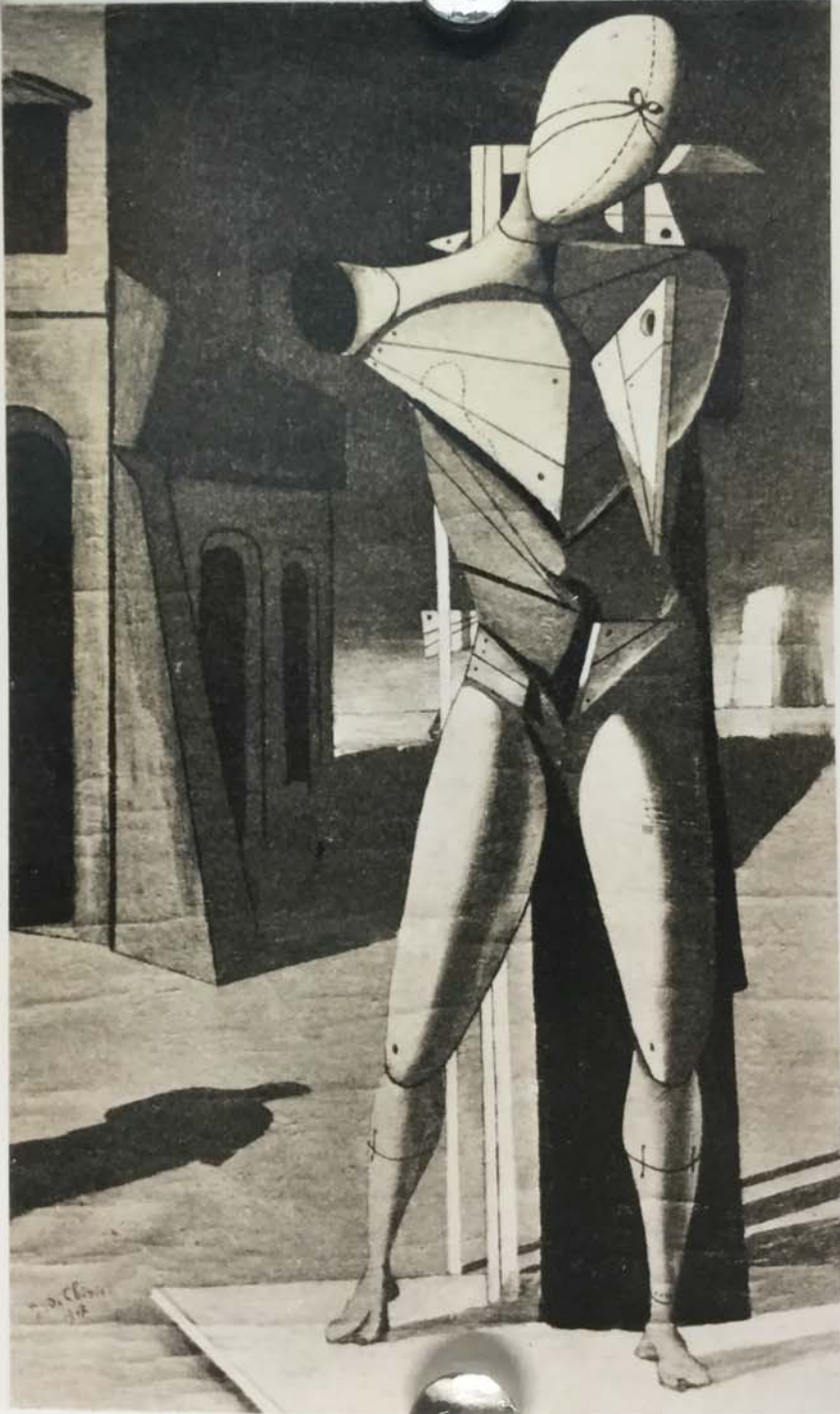
The Museum of Modern Art Archives, NY	Collection:	Series.Folder:
	JTS	II.H.12

La Muse du Poete - Lalse

3019-1

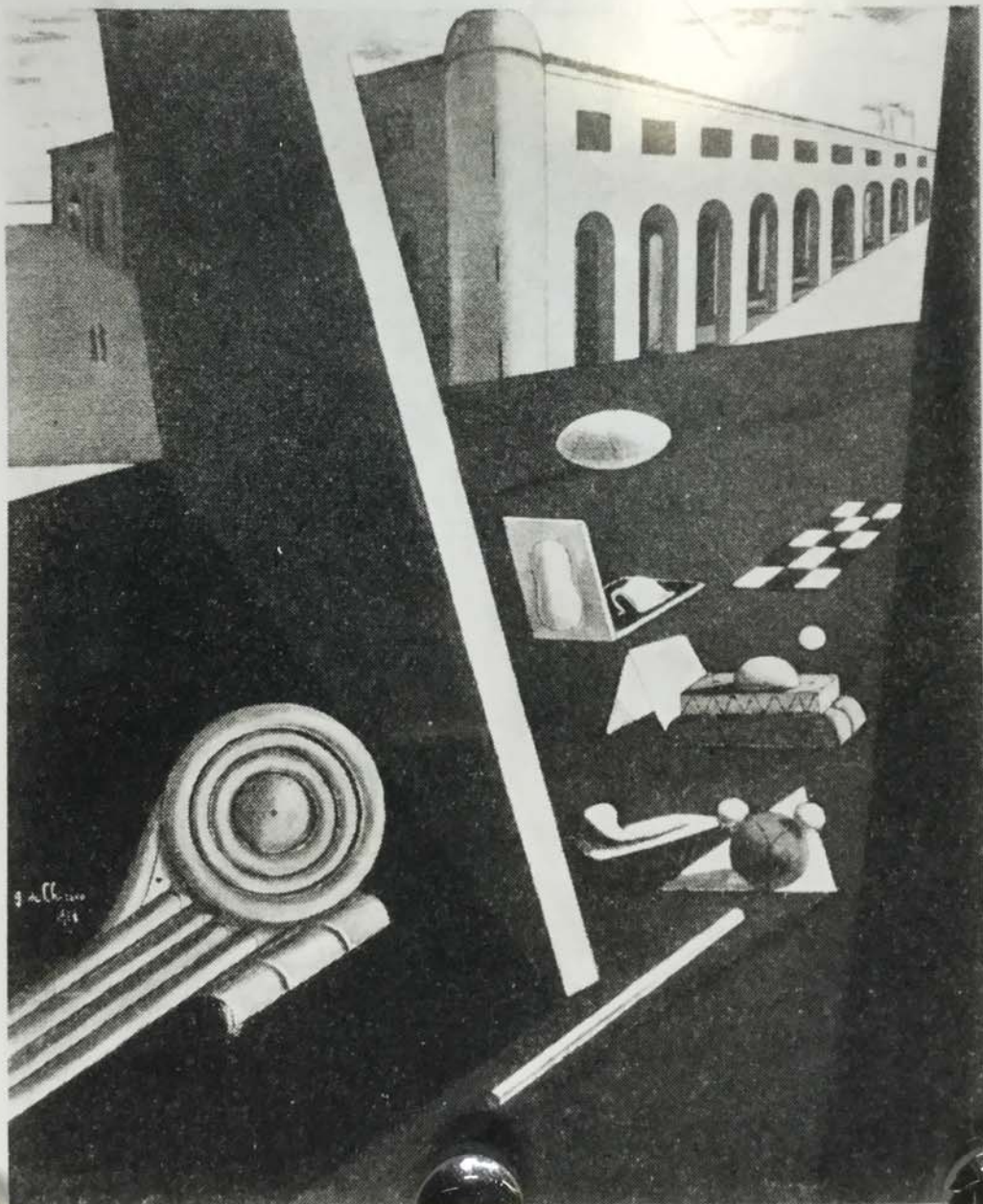
FOR STUDY PURPOSES ONLY. NOT FOR REPRODUCTION.

The Museum of Modern Art Archives, NY	Collection:	Series.Folder:
	JTS	II.H.12



FOR STUDY PURPOSES ONLY. NOT FOR REPRODUCTION.

The Museum of Modern Art Archives, NY	Collection:	Series.Folder:
	JTS	II.H.12



FOR STUDY PURPOSES ONLY. NOT FOR REPRODUCTION.

The Museum of Modern Art Archives, NY	Collection:	Series.Folder:
	JTS	II.H.12

*The sailors' barracks, 1914*

FOR STUDY PURPOSES ONLY. NOT FOR REPRODUCTION.

The Museum of Modern Art Archives, NY	Collection:	Series.Folder:
	JTS	II.H.12



FOR STUDY PURPOSES ONLY. NOT FOR REPRODUCTION.

The Museum of Modern Art Archives, NY	Collection:	Series.Folder:
	JTS	II.H.12

*Le Destin 1915*

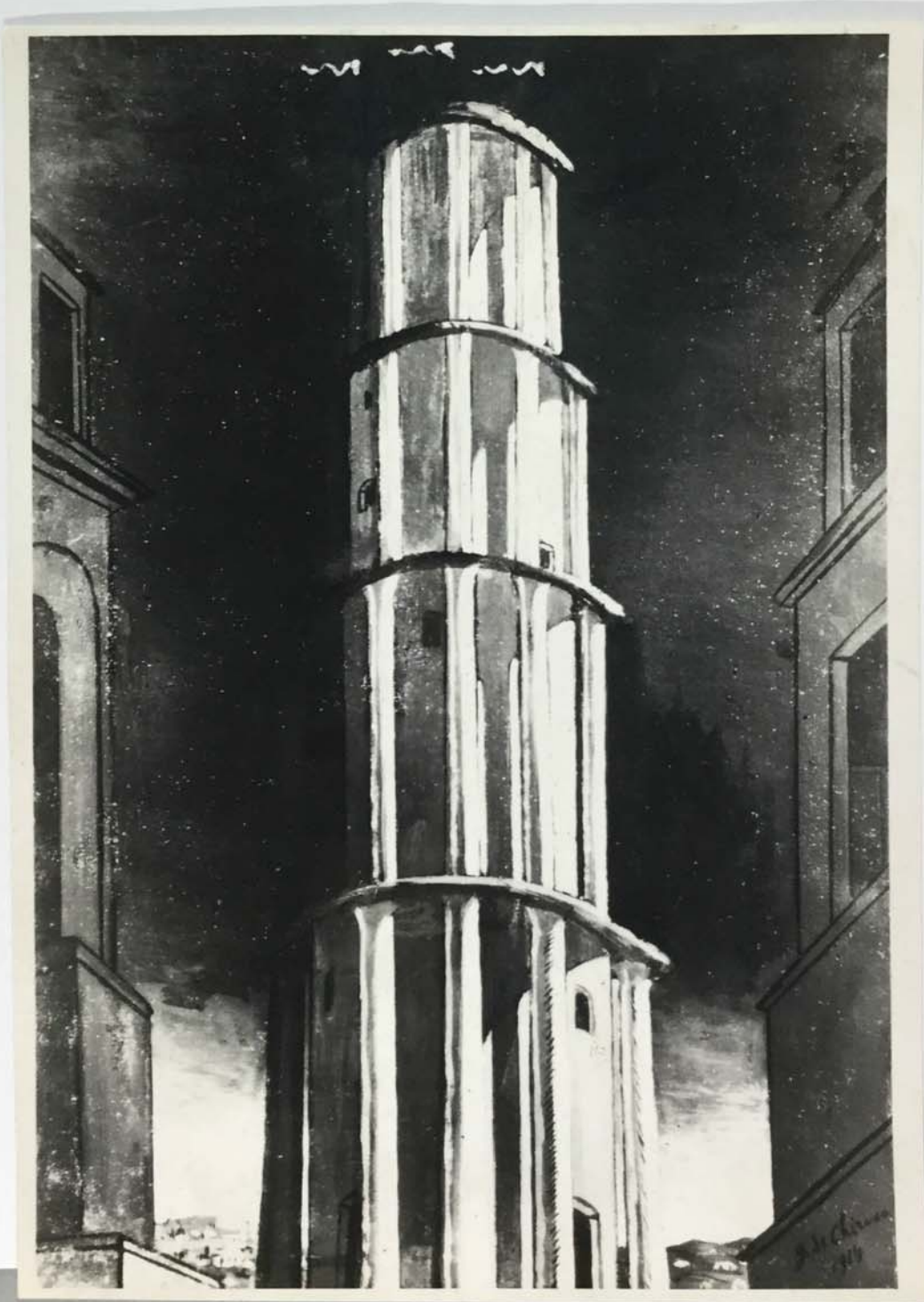
*34½ x 28*

*66*

SOICHI SUNAMI  
PHOTOGRAPHER  
ALGONQUIN 4-4843  
27 W. 15TH ST. NEW YORK

FOR STUDY PURPOSES ONLY. NOT FOR REPRODUCTION.

The Museum of Modern Art Archives, NY	Collection:	Series.Folder:
	JTS	II.H.12



FOR STUDY PURPOSES ONLY. NOT FOR REPRODUCTION.

The Museum of Modern Art Archives, NY	Collection:	Series.Folder:
	JTS	II.H.12

SERVIZIO FOTOGRAFICO  
FOTORIPRODUZIONE DOCUMENTI  
MANOSCRITTI E DISEGNI  
Gr. Uff. G. DE PRETORE  
ROMA - VIA DELLA VITE N.° 23  
TEL. 62.967

FOR STUDY PURPOSES ONLY. NOT FOR REPRODUCTION.

The Museum of Modern Art Archives, NY	Collection:	Series.Folder:
	JTS	II.H.12



FOR STUDY PURPOSES ONLY. NOT FOR REPRODUCTION.

The Museum of Modern Art Archives, NY	Collection:	Series.Folder:
	JTS	II.H.12

*Frances Lee photo*

SELF PORTRAIT, 1913

32 x 21 $\frac{1}{4}$

FOR STUDY PURPOSES ONLY. NOT FOR REPRODUCTION.

The Museum of Modern Art Archives, NY	Collection:	Series.Folder:
	JTS	II.H.12



FOR STUDY PURPOSES ONLY. NOT FOR REPRODUCTION.

The Museum of Modern Art Archives, NY	Collection:	Series.Folder:
	JTS	II.H.12

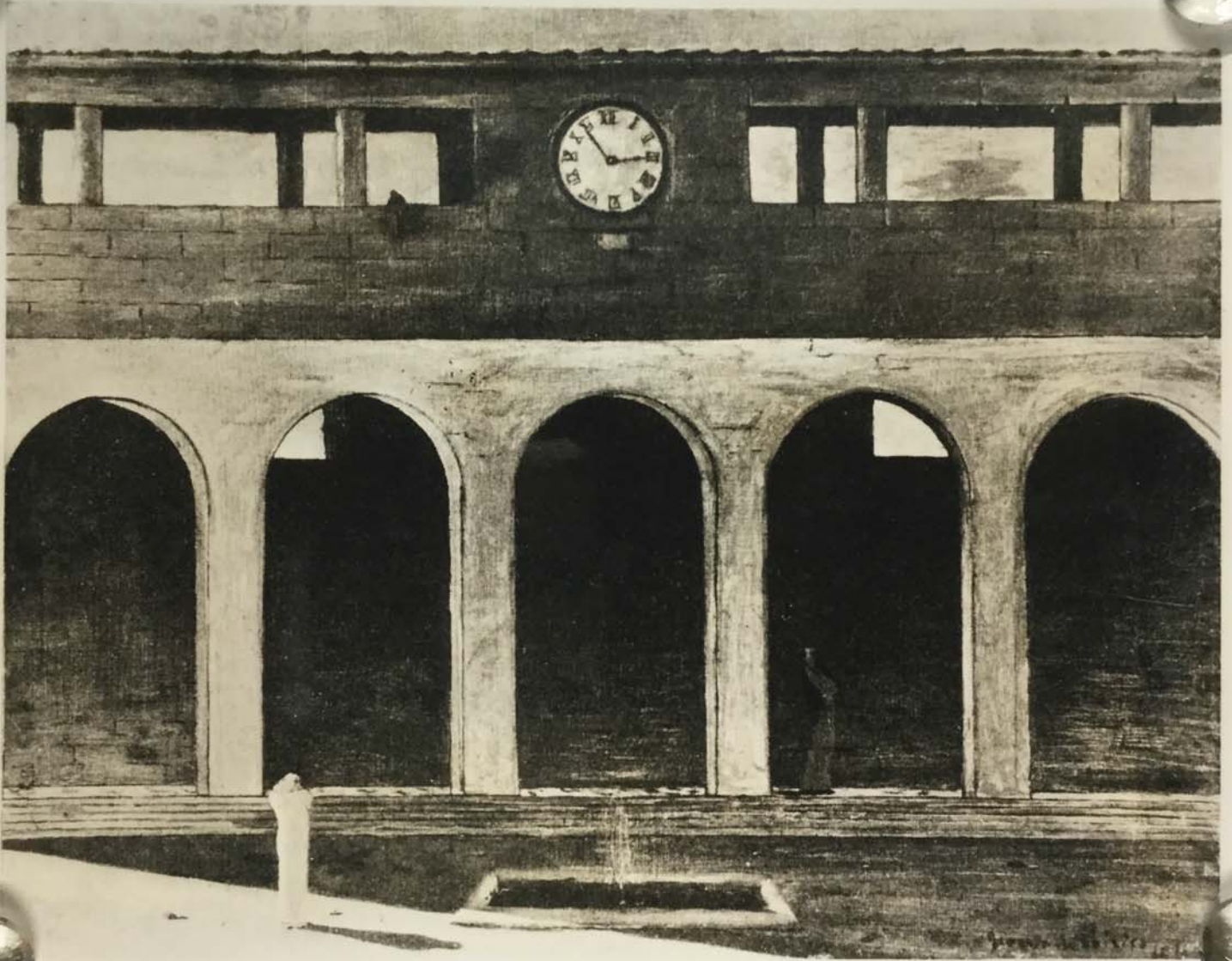
*Francis Lee photo*

*Self portrait, 1913*

*32 x 21 $\frac{1}{4}$*

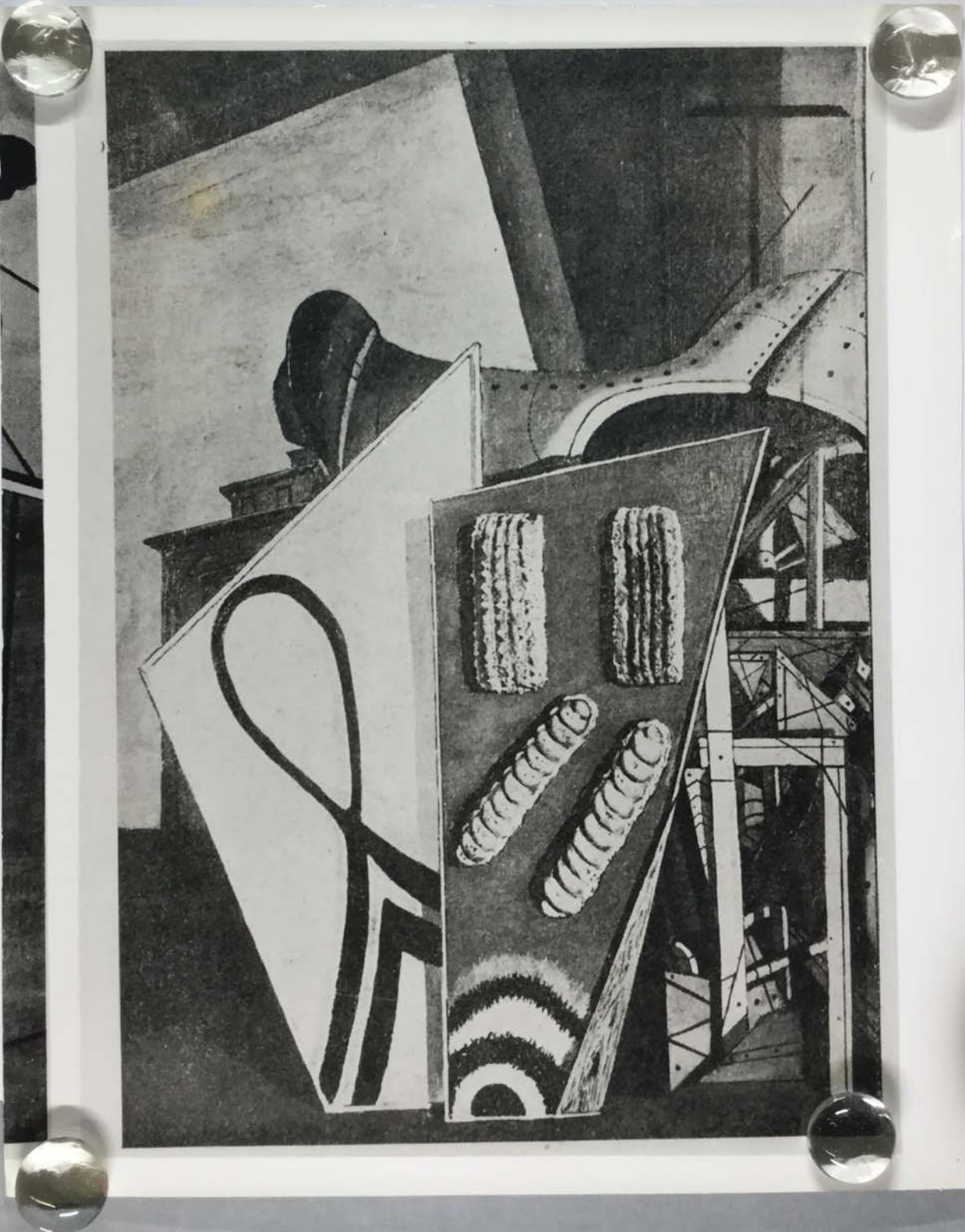
FOR STUDY PURPOSES ONLY. NOT FOR REPRODUCTION.

The Museum of Modern Art Archives, NY	Collection:	Series.Folder:
	JTS	II.H.12



FOR STUDY PURPOSES ONLY. NOT FOR REPRODUCTION.

The Museum of Modern Art Archives, NY	Collection:	Series.Folder:
	JTS	II.H.12



FOR STUDY PURPOSES ONLY. NOT FOR REPRODUCTION.

The Museum of Modern Art Archives, NY	Collection:	Series.Folder:
	JTS	II.H.12

Shell life 19??

Canvas

coll.

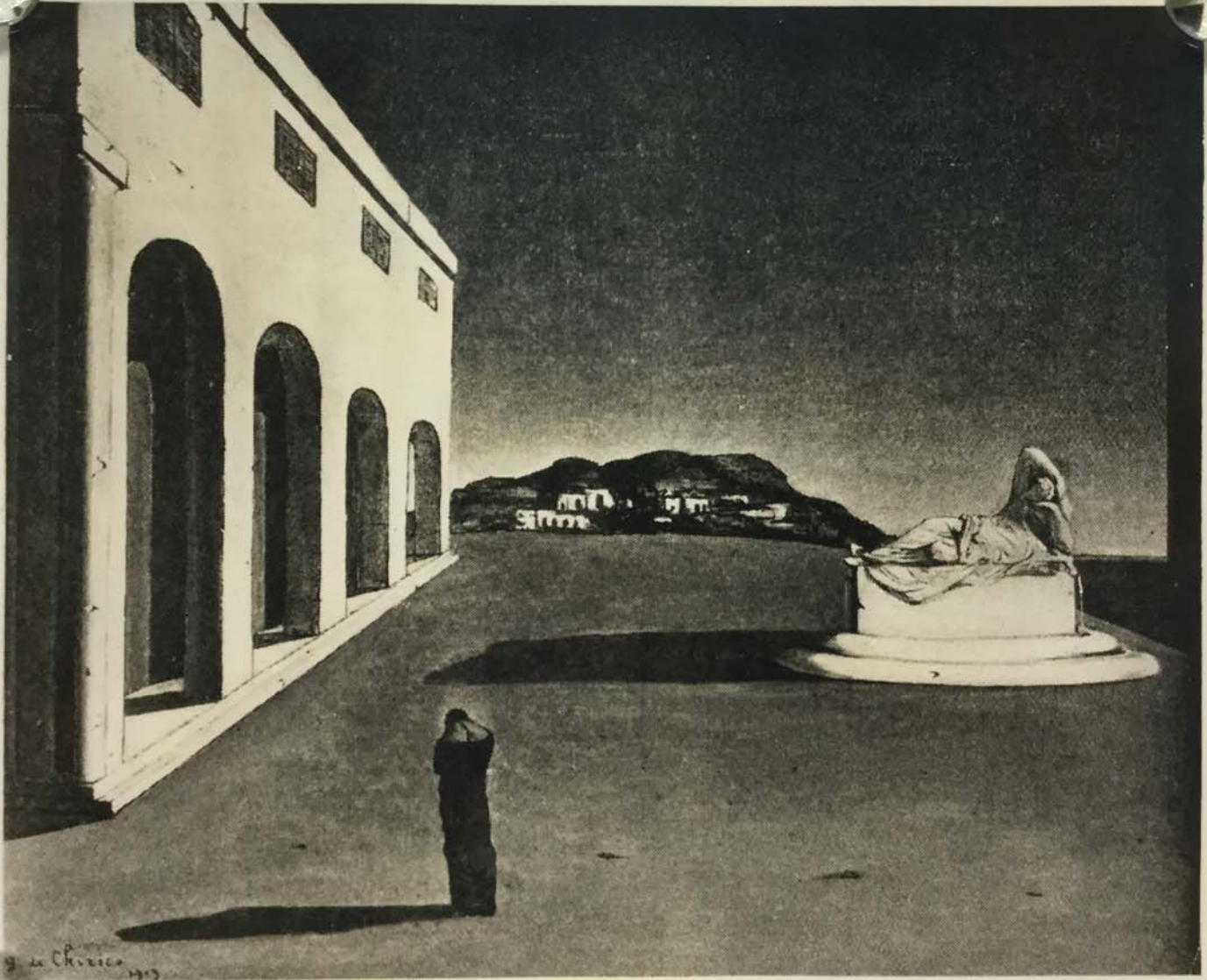
repro Transition, Jan. 1929, no 10 oth.

7-86

[1928]

FOR STUDY PURPOSES ONLY. NOT FOR REPRODUCTION.

The Museum of Modern Art Archives, NY	Collection:	Series.Folder:
	JTS	II.H.12



FOR STUDY PURPOSES ONLY. NOT FOR REPRODUCTION.

The Museum of Modern Art Archives, NY	Collection:	Series.Folder:
	JTS	II.H.12

Melancholy, 1913  
Canvas  
coll Paul Guillaume

FOR STUDY PURPOSES ONLY. NOT FOR REPRODUCTION.

The Museum of Modern Art Archives, NY	Collection:	Series.Folder:
	JTS	II.H.12



*Cliché Paul Gulloume*

FOR STUDY PURPOSES ONLY. NOT FOR REPRODUCTION.

The Museum of Modern Art Archives, NY	Collection:	Series.Folder:
	JTS	II.H.12

Astronomy, 1915  
Canvas  
with Paul Guillaume

out as plate

FOR STUDY PURPOSES ONLY. NOT FOR REPRODUCTION.

The Museum of Modern Art Archives, NY	Collection:	Series.Folder:
	JTS	II.H.12



FOR STUDY PURPOSES ONLY. NOT FOR REPRODUCTION.

The Museum of Modern Art Archives, NY	Collection:	Series.Folder:
	JTS	II.H.12

47

Giorgio DE CHIRICO - "Gladiatori" -1925- 60 x 80

Racc. Indes - Milano -

HMA #2371

FOR STUDY PURPOSES ONLY. NOT FOR REPRODUCTION.

The Museum of Modern Art Archives, NY	Collection:	Series.Folder:
	JTS	II.H.12



FOR STUDY PURPOSES ONLY. NOT FOR REPRODUCTION.

The Museum of Modern Art Archives, NY	Collection:	Series.Folder:
	JTS	II.H.12

ALFRED GARLBACH,  
PHOTOGRAPHIC STUDIO,  
22 QUEEN'S GARDENS,  
LONDON, W.2.

FOR STUDY PURPOSES ONLY. NOT FOR REPRODUCTION.

The Museum of Modern Art Archives, NY	Collection:	Series.Folder:
	JTS	II.H.12



FOR STUDY PURPOSES ONLY. NOT FOR REPRODUCTION.

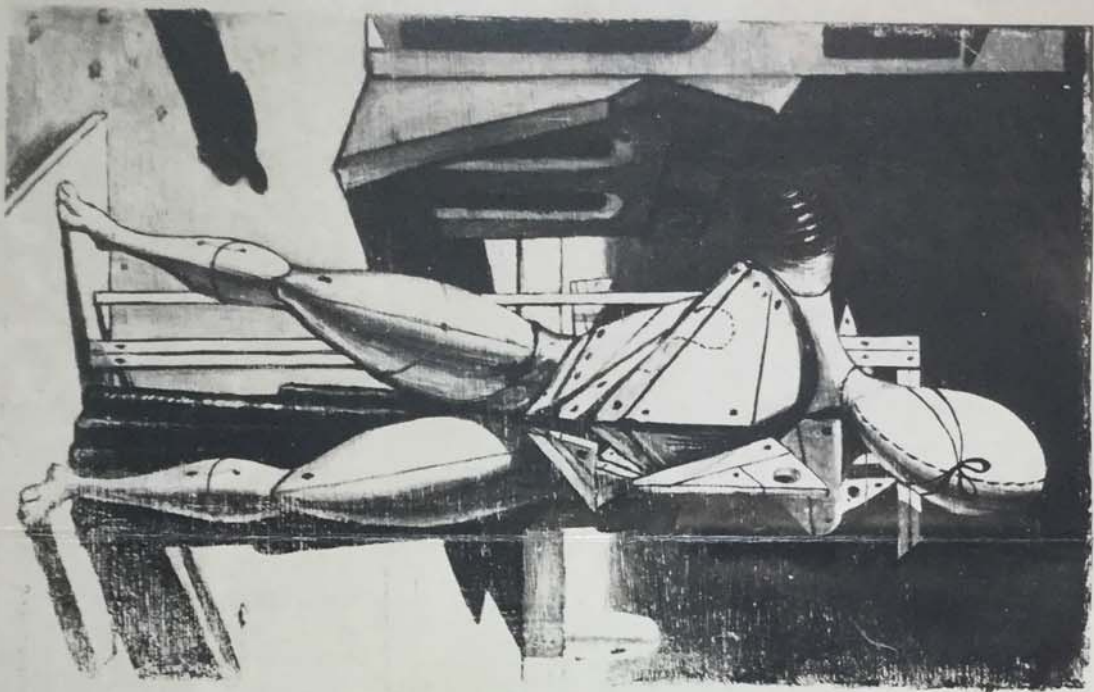
The Museum of Modern Art Archives, NY	Collection:	Series.Folder:
	JTS	II.H.12

copyright by  
fotografie clari  
milano - c. p. vittoria 54  
telefono 706303  
fax numero 4101

The Museum of Modern Art Archives, NY

Collection: JTS

Series/Folder: II.H.12



*Umberto Boccioni*

*Scultura in bronzo  
"Forme uniche e continuità  
nello spazio" di Umberto  
Boccioni  
1911  
Galleria Viti, Smanuele, PiasseScola  
Milano*

M.A.P.  
F. G.  
MILANO

↖  
"ARMI" di MAFFIO PEROTTI  
Riproduzioni quadri e sculture  
Galleria Viti, Smanuele, PiasseScola  
Milano Telefono 870.563

FOR STUDY PURPOSES ONLY. NOT FOR REPRODUCTION.

The Museum of Modern Art Archives, NY	Collection:	Series.Folder:
	JTS	II.H.12

**MEMORANDUM**

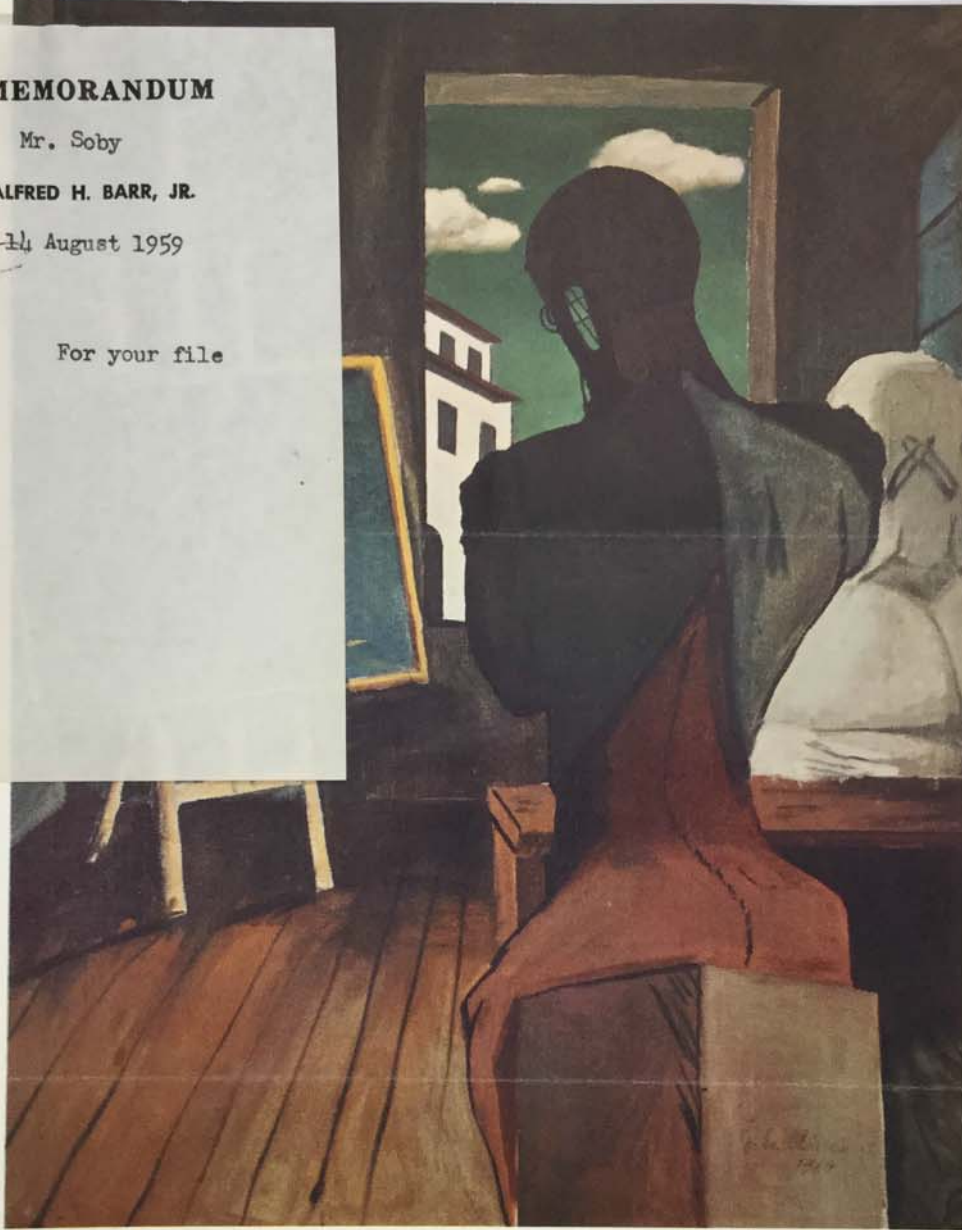
**To:** Mr. Soby

**From:** ALFRED H. BARR, JR.

**Date:** 14 August 1959

**Subject:**

For your file

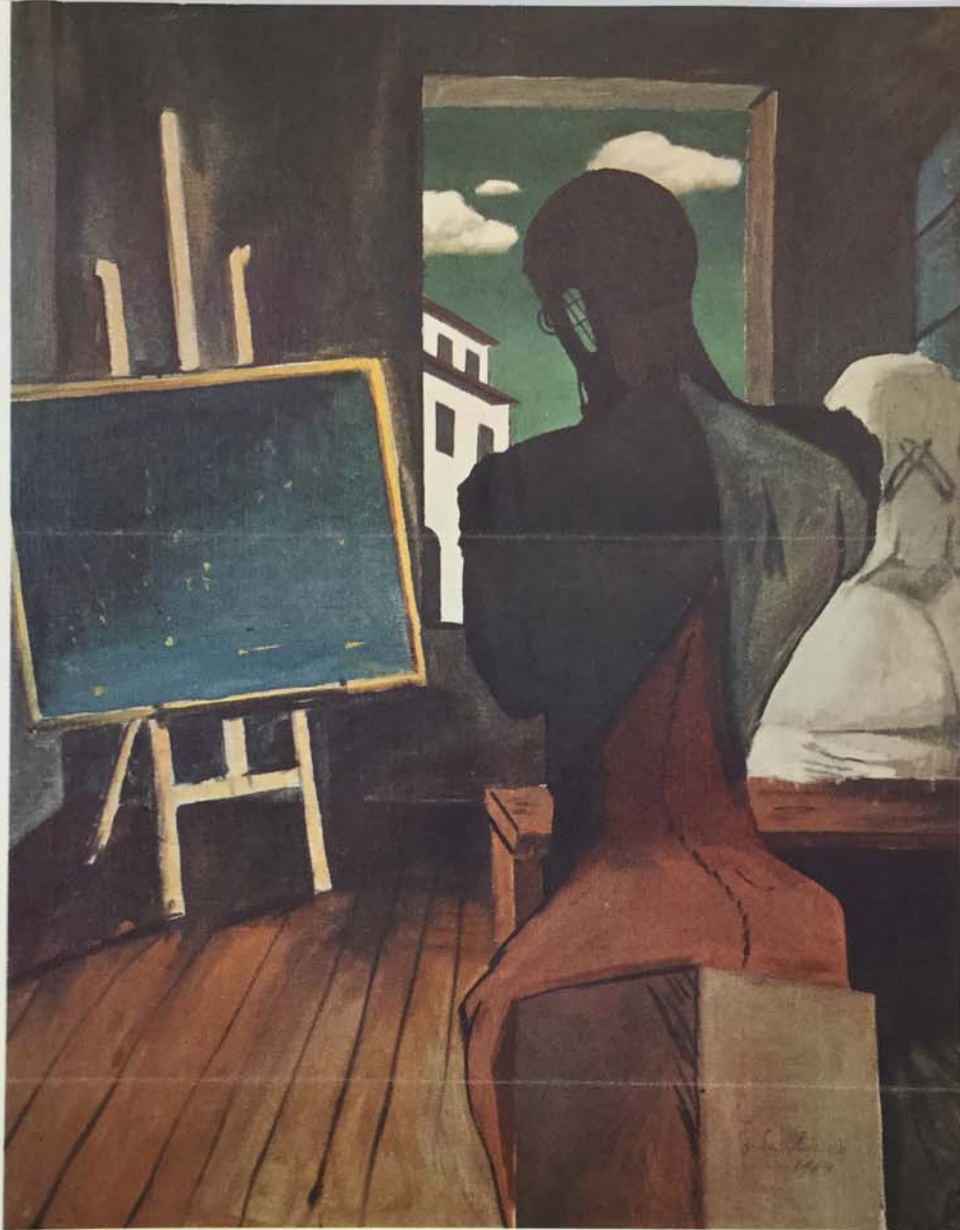


« Poètes et philosophes », de Giorgio de Chirico (1914).  
« Dichters en filosofen », van Giorgio de Chirico (1914).  
« Poets and philosophers », by Giorgio de Chirico (1914).

◀ « La rousse au pendentif », d'Amedeo Modigliani (1917).  
« De roodharige met het medaillon », van Amedeo Modigliani (1917).  
« The red-haired woman with the pendant », by Amedeo Modigliani (1917).

FOR STUDY PURPOSES ONLY. NOT FOR REPRODUCTION.

The Museum of Modern Art Archives, NY	Collection:	Series.Folder:
	JTS	II.H.12



« Poètes et philosophes », de Giorgio de Chirico (1914).  
« Dichters en filosofen », van Giorgio de Chirico (1914).  
« Poets and philosophers », by Giorgio de Chirico (1914).

◀ « La rousse au pendant », d'Amedeo Modigliani (1917).  
« De roodharige met het medaillon », van Amedeo Modigliani (1917).  
« The red-haired woman with the pendant », by Amedeo Modigliani (1917).

FOR STUDY PURPOSES ONLY. NOT FOR REPRODUCTION.

The Museum of Modern Art Archives, NY	Collection:	Series.Folder:
	JTS	II.H.12



FIN DE COMBAT.

1927.

FOR STUDY PURPOSES ONLY. NOT FOR REPRODUCTION.

The Museum of Modern Art Archives, NY	Collection:	Series.Folder:
	JTS	II.H.12

Giorgio de Chirico

g de Chirico



FIN DE COMBAT.

1927.

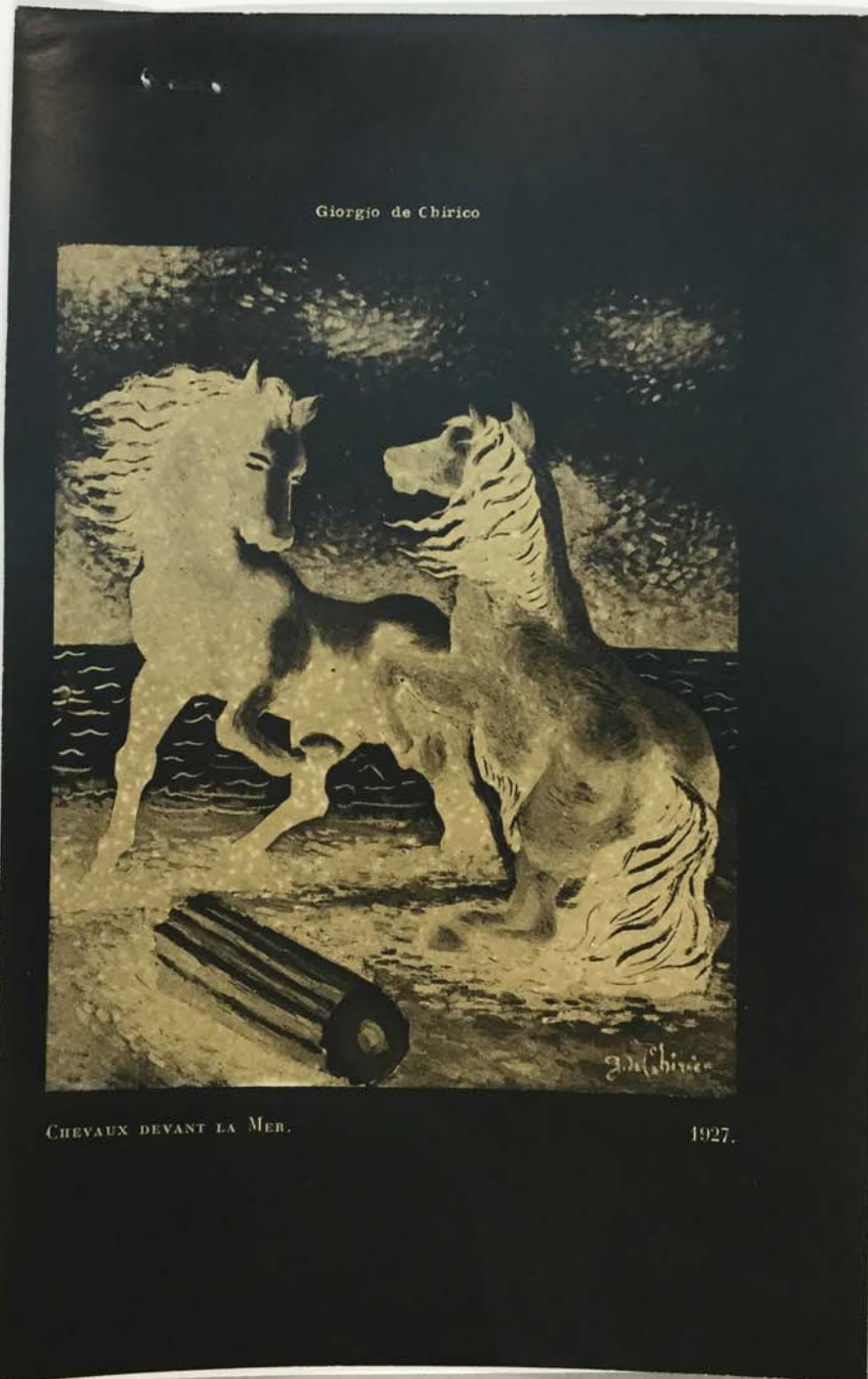
FOR STUDY PURPOSES ONLY. NOT FOR REPRODUCTION.

The Museum of Modern Art Archives, NY	Collection:	Series.Folder:
	JTS	II.H.12

Stat - MMA Library

FOR STUDY PURPOSES ONLY. NOT FOR REPRODUCTION.

The Museum of Modern Art Archives, NY	Collection:	Series.Folder:
	JTS	II.H.12



FOR STUDY PURPOSES ONLY. NOT FOR REPRODUCTION.

The Museum of Modern Art Archives, NY	Collection:	Series.Folder:
	JTS	II. H. 12

Giorgio de Chirico



CHEVAUX DEVANT LA MER.

1927.

FOR STUDY PURPOSES ONLY. NOT FOR REPRODUCTION.

The Museum of Modern Art Archives, NY	Collection:	Series.Folder:
	JTS	II.H.12

Stat - MMA Library.

FOR STUDY PURPOSES ONLY. NOT FOR REPRODUCTION.

The Museum of Modern Art Archives, NY	Collection:	Series.Folder:
	JTS	II.H.12



FOR STUDY PURPOSES ONLY. NOT FOR REPRODUCTION.

The Museum of Modern Art Archives, NY	Collection:	Series.Folder:
	JTS	II.H.12

"Le Rêve de la Thessalie"

by

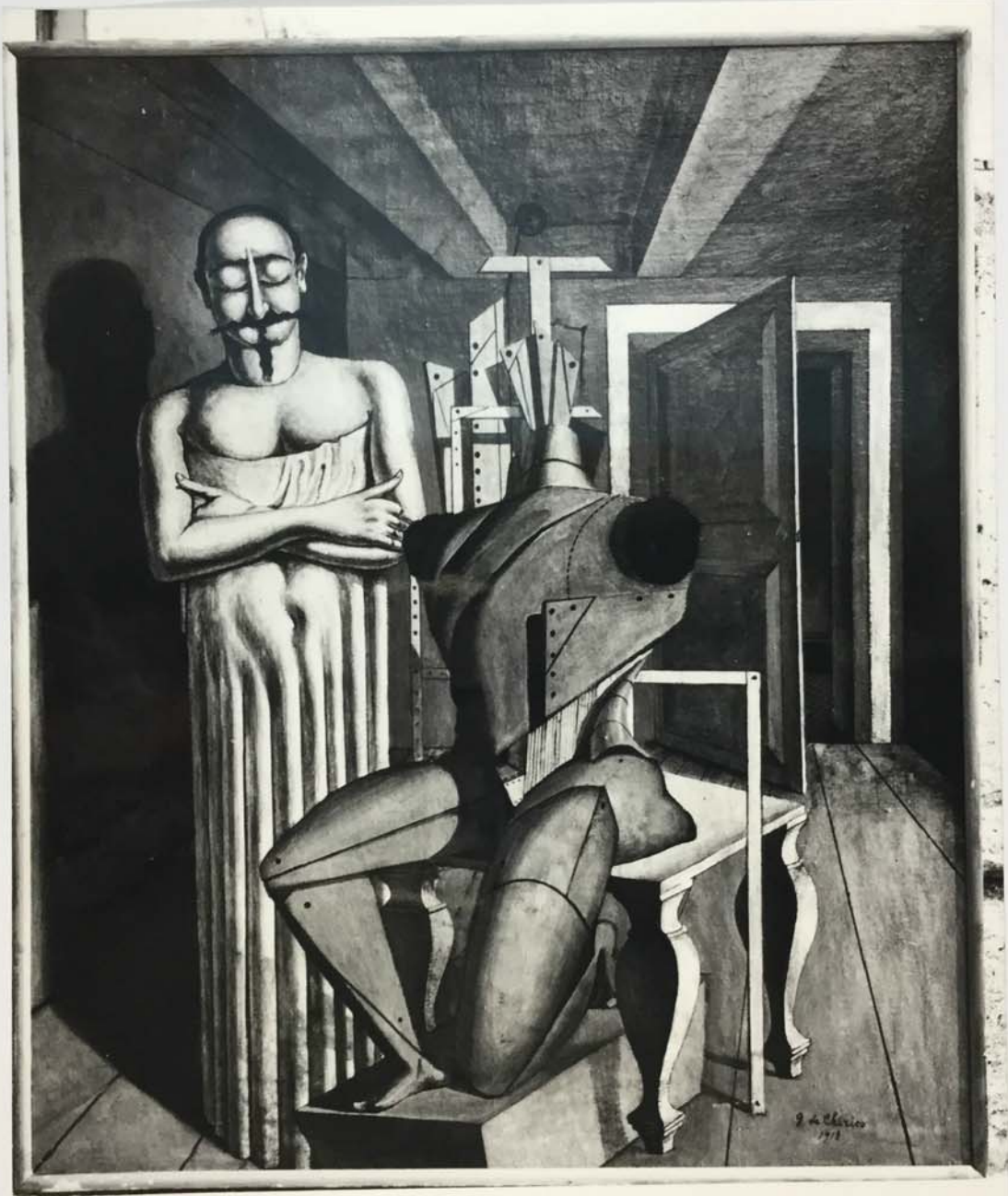
Georges de Chirico

Collection Paul Guillaume, Paris

Dabell Hatfield, Los Angeles

FOR STUDY PURPOSES ONLY. NOT FOR REPRODUCTION.

The Museum of Modern Art Archives, NY	Collection:	Series.Folder:
	JTS	II.H.12



FOR STUDY PURPOSES ONLY. NOT FOR REPRODUCTION.

The Museum of Modern Art Archives, NY	Collection:	Series.Folder:
	JTS	II.H.12

© copyright by  
**dominique darr**  
reporter photographe  
15 quai louis blériot  
paris 16  
tél 288 5186

---

**mention obligatoire**

FOR STUDY PURPOSES ONLY. NOT FOR REPRODUCTION.

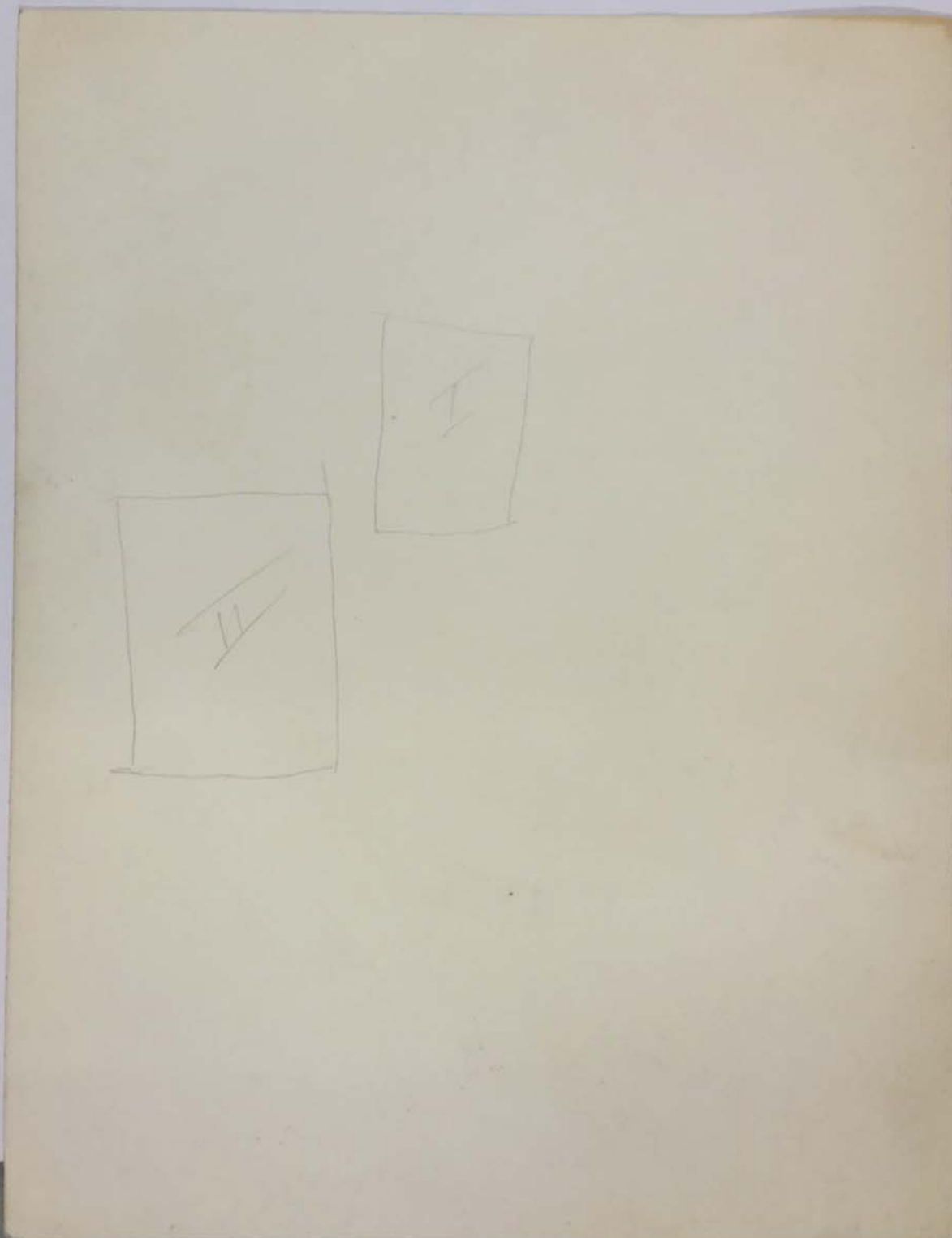
The Museum of Modern Art Archives, NY	Collection:	Series.Folder:
	JTS	II.H.12



Ed. Alinari P.L.N. PADOVA - Monumento al Generale Gattamelata. (Donatello)

FOR STUDY PURPOSES ONLY. NOT FOR REPRODUCTION.

The Museum of Modern Art Archives, NY	Collection:	Series.Folder:
	JTS	II.H.12



FOR STUDY PURPOSES ONLY. NOT FOR REPRODUCTION.

The Museum of Modern Art Archives, NY	Collection:	Series.Folder:
	JTS	II.H.12

79.2



6/8

FOR STUDY PURPOSES ONLY. NOT FOR REPRODUCTION.

The Museum of Modern Art Archives, NY	Collection:	Series/Folder:
	JTS	II.H.12

3190  
Source: Portrait of Guillaume Apollinaire  
Page 31 by de Chirico  
Minotaure - No. 5 - 1934 issue

GIORGIO DE CHIRICO  
PORTRAIT OF GUILLAUME APOLLINAIRE, 1913-14  
(wood engraving by Pierre Roy)

Please return photo to Sobr

3 1/2" ← →

4979  
10 x 1 1/2 inch  
9 lb  
1 HT  
1 sel

4979  
10 x 1 1/2 inch  
9 lb  
1 HT  
1 sel

5-10.286 (taken)

Photographed for The Museum of Modern Art 6/50  
by Soichi Sugami. If reproduced, credit  
must be given The Museum of Modern Art.

FOR STUDY PURPOSES ONLY. NOT FOR REPRODUCTION.

The Museum of Modern Art Archives, NY	Collection:	Series.Folder:
	JTS	II.H.12



(Ed.™ Alinari) P.° I.° N.° I2308. PADOVA - Palazzo della Ragione. Cavallo in legno eseguito da Donatello per Annibale Capedilista.

FOR STUDY PURPOSES ONLY. NOT FOR REPRODUCTION.

The Museum of Modern Art Archives, NY	Collection:	Series.Folder:
	JTS	II.H.12

*near Volo?*



**FALLEN STATUE** of favorite son, Poet Solomos, who wrote Greek anthem, lies headless in Zante.



**FRIGHTENED FUG**  
caïque at the dock in A



FOR STUDY PURPOSES ONLY. NOT FOR REPRODUCTION.

The Museum of Modern Art Archives, NY	Collection:	Series.Folder:
	JTS	II.H.12

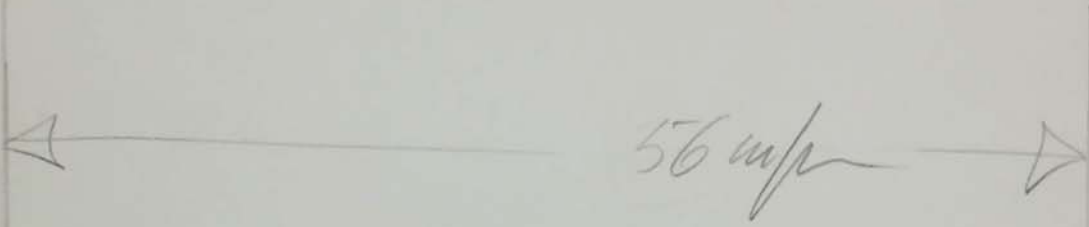


FOR STUDY PURPOSES ONLY. NOT FOR REPRODUCTION.

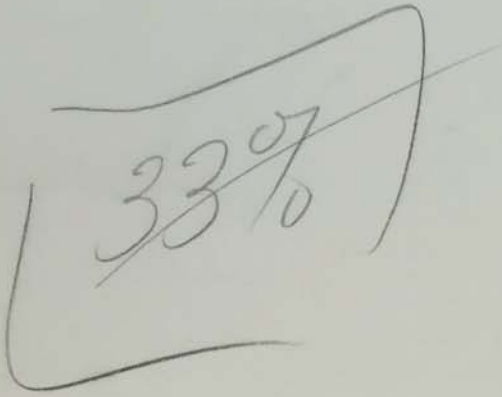
The Museum of Modern Art Archives, NY	Collection:	Series.Folder:
	JTS	II.H.12

the approximation of the nose

reproduced La révolution surréaliste  
N°1 page 8.



22



+

2 3/16" w

16965  
37,2% 54-  
EMMETT E. SMITH