

## CONDITIONS OF USE FOR THIS PDF

The images contained within this PDF may be used for private study, scholarship, and research only. They may not be published in print, posted on the internet, or exhibited. They may not be donated, sold, or otherwise transferred to another individual or repository without the written permission of The Museum of Modern Art Archives.

When publication is intended, publication-quality images must be obtained from SCALA Group, the Museum's agent for licensing and distribution of images to outside publishers and researchers.

If you wish to quote any of this material in a publication, an application for permission to publish must be submitted to the MoMA Archives. This stipulation also applies to dissertations and theses. All references to materials should cite the archival collection and folder, and acknowledge "The Museum of Modern Art Archives, New York."

Whether publishing an image or quoting text, you are responsible for obtaining any consents or permissions which may be necessary in connection with any use of the archival materials, including, without limitation, any necessary authorizations from the copyright holder thereof or from any individual depicted therein.

In requesting and accepting this reproduction, you are agreeing to indemnify and hold harmless The Museum of Modern Art, its agents and employees against all claims, demands, costs and expenses incurred by copyright infringement or any other legal or regulatory cause of action arising from the use of this material.

### **NOTICE: WARNING CONCERNING COPYRIGHT RESTRICTIONS**

The copyright law of the United States (Title 17, United States Code) governs the making of photocopies or other reproductions of copyrighted material. Under certain conditions specified in the law, libraries and archives are authorized to furnish a photocopy or other reproduction. One of these specified conditions is that the photocopy or reproduction is not to be "used for any purpose other than private study, scholarship, or research." If a user makes a request for, or later uses, a photocopy or reproduction for purposes in excess of "fair use," that user may be liable for copyright infringement.

The Museum of Modern Art Archives, NY	Collection:	Series/Folder:
	Silverman Fluxus Archives	I.929

Toshi Ichiyanagi my letter.

Requested: Yoko address, plqs. compositions.  
 Piano pieces of Toshi. + instructions!  
 Takemitsu - Piano Distance & Crossing.  
 Yasunao Tone - Piano sound with magnetic tape.  
 George Yusa - prof. Esemplastic & Topologic.  
 Mizuno, Shiomi, - Ensemble 51,  
 Akiyama - secret method 19.  
 Yoko to come to Europe after Jan. '63.

Toshi Ichiyanagi. his letter. Jan. 21. 62.

Chieko Shiomi: • for piano & paper • ensemble 51 • Happening.  
 Yoriaki Matsudaira: Instr. for piano.  
 Yuji Takahashi: 5 pages.  
 Yasunao Tone: 20 new pieces, tapes, etc.  
 Kuniharu Akiyama: tape.  
 Nobutaka Mizuno:  
 Toshi: (post N.Y. work) Stanzas, Pile, Duet.

Toshi Ichiyanagi.

Acknowledged receipt of tapes.

Requested scores.

Plans for caravan:

Bydapest, Prague, Krakow, Warsaw, Lublin, Vilna, Riga, Tallinn, Leningrad, Minsk,  
 Kiev, Moscow, Voronezh, Saratov, Kazan, Magnitogorsk, Sverdlovsk, Omsk,  
 Tomsk, Krasnoyarsk, Irkutsk, Chita, Vladivostok — Japan.

Same caravan in Japan.

Year boxes: text, records, flip- books, junk, originals, garbages, animals, veg.

Requested Yoko's address.

Toshi's letter: July. 28. 62.

Sending scores, instructions, films, Yoko's plqs. etc. partly by air, part by sea.

also instructions for all piano pieces.

Cage + Tudor in Oct. to Japan. (all over for a month)

Within 1st half of 1963 could come to Europe.

Fluxus fest in Japan 1964. wants to invite Cage, Tudor, Rauschenberg (?) Merce C.

Yoko anxious to go to Europe.

Toshi's letter:

Adds: Yoko Ono (piano) "a piece to see the skies"

Kemuro Ezaki - "moving pulses" for 3 voices + percussion. & "Discretion".

Yoritsune Matsudaira's flute solo.

Yoko Ono "pulse".

Shinichi Matsushita - "Mosaics" for piano solo (2-3 players)

Ichiyanagi - "pile" & "Kaiki"

Take out: Chieko Shiomi's "Ensemble 51", Nobutaka Mizuno "brass piece"

George Yusa "Projection Topologic", T. Kosugi "Anima I", T. Ono "by Akiyama."

XEROX COPY

ARCHIVE JEAN BROWN

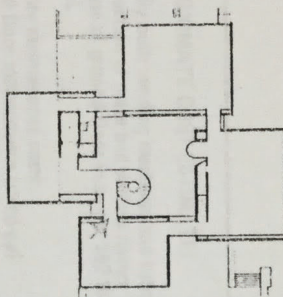
File: George Mavrias  
 notes Ca. 1963



FOR STUDY PURPOSES ONLY. NOT FOR REPRODUCTION.

The Museum of Modern Art Archives, NY	Collection:	Series.Folder:
	Silverman Fluxus Archives	I.929

A 25 x 54 x 18clg. 6TH DIMENSION  
stair blocked at bottom



B 40 x 52 x 24clg. BLUE ROOM

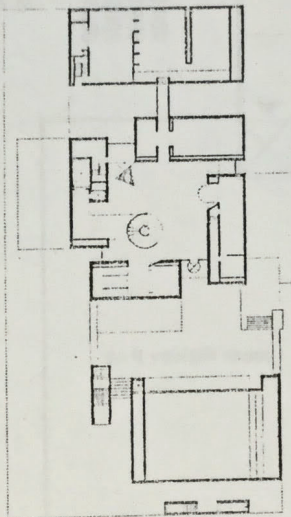
C 38 x 52 x 18clg. WATER EVENT  
sink in closet, balcony over main lobby

A 32 x 43 x 16clg. WEIGHT EVENT

KITCHEN & DINING AREA

MAIN LOBBY  
DO IT YOURSELF  
hat rack from sculpture  
paintings covered with plexiglass  
or white paintings of same size

PORTRAIT OF JOHN LENNON  
AS A YOUNG CLOUD  
2 doors leading to room with cabinets

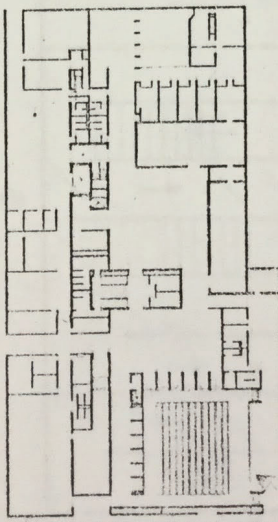


F 19 x 35 OBJECTS

VENDING MACHINE ARCADE

LIBRARY filled with GRAPEFRUIT only

PUBLIC TELEPHONE (INSTANT GURU)  
PUBLIC TOILETS



PLEXIGLAS MAZE, 16 x 16

SOUNDPROOF ROOM

THEATRE



The Museum of Modern Art Archives, NY	Collection:	Series.Folder:
	Silverman Fluxus Archives	I.929

# JOKO JUKE JOINT PRELIMINARY PLAN

## CAPSULE DISPENSERS

- 1 air
- 1 tear
- 1 acorn
- 1 catshit

## 3 STAMP DISPENSERS

- 1 metal slug or short change
- 4 tickets (12 different kinds)
- 3 island (lennonland) post (9 different kinds)

## OBJECT DISPENSERS

- 1 plastic gloves
- 10 rubber stamps
- 1 white chess pocket set
- 1 smile box
- 1 danger box
- 1 listen box
- 2 T shirts
- 8 flux-objects

## POSTCARD-CARD DISPENSERS

- 1 JL satyr
- 1 YO to see the sky
- 5 part paintings
- 10 event cards

## DRINK DISPENSERS

- 1 Lennonade in leaking-disintegrating cup
- 1 fluxdrink (tea with salt)

## VIEWERS

- 2 mutoscopes by JL (distant and near)
- 4 film loop viewers (bottoms, legs, fly, clock)
- 2 speeded up film viewers (Apotheosis, Erection)
- 1 shadow box
- 1 sizes
- 2 reclining nudes
- 1 water clock
- 1 picture clock

## SOUND DISPENSERS

- 1 juke box - wrong selections
- 1 Joe Jones orchestra

## GAMES

- 1 pinball machine
- 2 carousel horses
- 2 ping-pong (against wall) corrugated, racket with hole
- 1 shooting gallery (hitting funny objects)
- 1 driving tester (misaligned wheel)

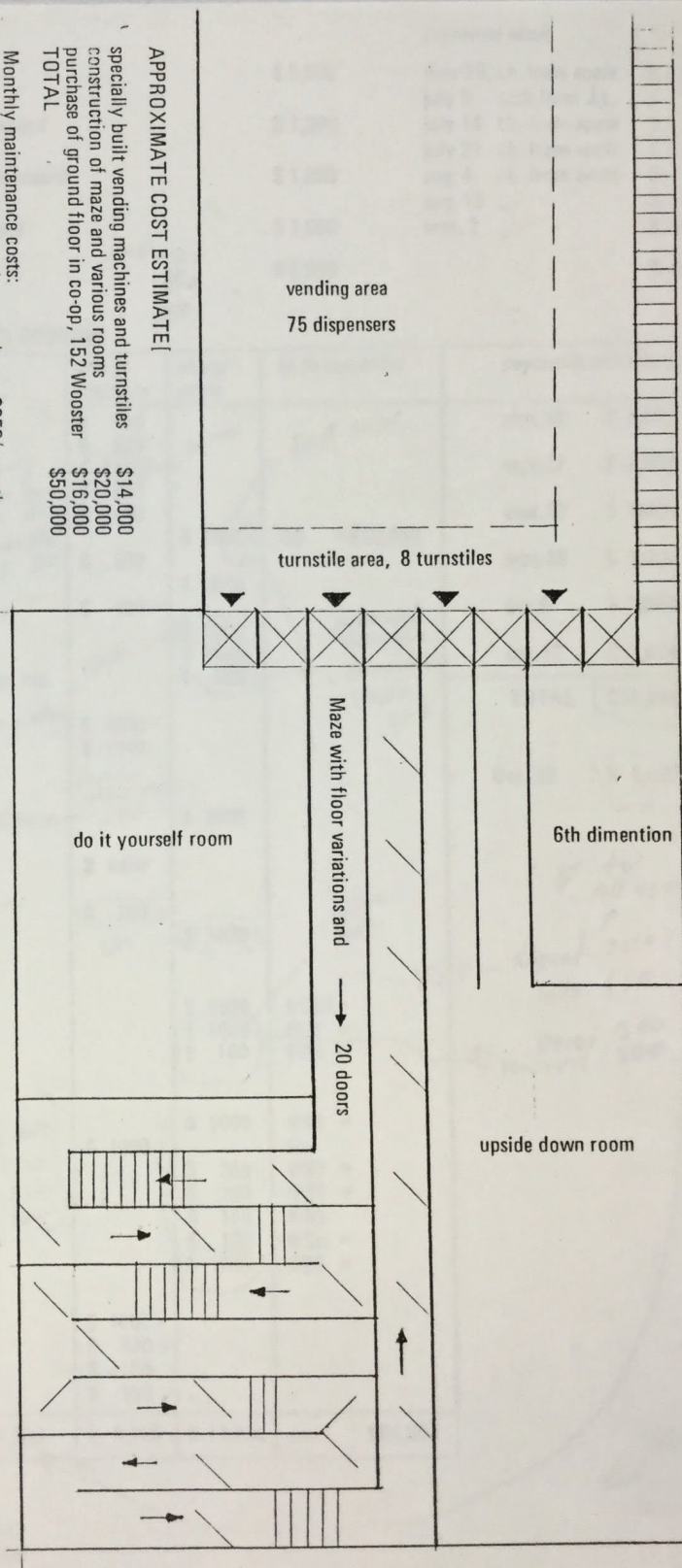
## TURNSTILES TO SEPARATE ROOMS

- 6th dimension - tactile room
- Do It Yourself room
- Corridor of doors - Port of LJ as a young cloud
- maze
- Ayo's floor variations (combine with maze?)
- Weight room
- Upside down room
- Half room

Monthly maintenance costs:  
ground floor maintenance (to co-op)  
maintenance man and guard  
TOTAL MONTHLY MAINT.

\$250/ month  
\$250/ month  
\$500

APPROXIMATE COST ESTIMATE!  
specially built vending machines and turnstiles  
construction of maze and various rooms  
purchase of ground floor in co-op, 152 Wooster  
TOTAL  
\$14,000  
\$20,000  
\$16,000  
\$50,000





FOR STUDY PURPOSES ONLY. NOT FOR REPRODUCTION.

The Museum of Modern Art Archives, NY	Collection:	Series.Folder:
	Silverman Fluxus Archives	I.929

charges and payments determined

july 4	prototype objects, part 1	\$ 5,000
july 19	assisting joe jones, recording session, yoko ono record	\$ 1,000
july 19	typography %& design record sleeve, john lennon record	\$ 1,000
sept. 8	design inside cover & typography, yoko ono record	\$ 1,000
SUBTOTALS		\$ 8,000

payments made

june 28,	ch. from apple	\$ 1,000
july 9	cash from J.L.	\$ 500
july 14	ch. from apple	\$ 1,200
july 21	ch. from apple	\$ 800
aug. 4	ch. from apple	\$ 400
aug. 19	"	\$ 600
sept. 2	"	\$ 3,000
		\$ 7,800

EVERSON MUSEUM SHOW OF YOKO ONO OCT.9 1971 OPENING

item H	charge museum	charge apple	to be resold for	payments made by apple
1 water event invitation, design & production, 700 copies	\$ 500			sept.10 \$ 4,000
1 research for addresses	\$ 200			
2 disappearing announcement, 5000 copies, production	\$ 1000			sept.17 \$ 2,000
3 poster design without production	\$ 400			
4 folding 7 wood box catalogue - design only	\$ 1400			sept.22 \$ 4,000
4 catalogue production, 100 copies @ \$20 ea. *)		\$ 2000	@\$ = \$50,000	
5 unpacking, repacking & shipping objects	\$ -600			sept.28 \$ 3,000
6 new objects, except: 6-b,f,g,j,k,l,m,n		\$ 2000		
6 chocolate chess, one set	\$ 400			oct.5 \$ 6,000
6 n giant guitar		\$ 1000		oct.12 \$ 3,000
7 water event plexiglass stands, tubular with signs		\$ 1500		
7 water event objects: H <sub>2</sub> O, pump, glass ware, drink disp. etc.		\$ 600		
8 weight event (museum produced & paid)				TOTAL \$22,000
9 6th dimension, 200 masks with special lenses	\$ 1200			
9 brush box	\$ none			
10 blue room (old objects & stands used)				Oct. 22 \$ 4,000
11 Do it yourself room (museum produced & paid)				
12 Portrait of John Lennon, 8'x12' wall cabinet with 100 doors	\$ 2000			
13 Plexiglass maze (museum produced & paid)	\$ none			
13 glass bearing balls for floor of maze (not used)				
16 film clock (charge from Steve Gebhardt)	\$ 200			
17 concert of wood piece (charge from Philip Corner)	\$ 3000			
18 edible clothes, for 3 models (to be used later)				
Items not covered in Schedule 2				
19 150 stainless steel smile boxes (by Y.O.) @ \$1 each		\$ 1500	@\$50 =	
20 1000 plastic smile boxes @ \$1 each		\$ 1000	@\$5 =	
21 100 plastic listen boxes (by J.L.) @ \$1 each		\$ 100	@\$5 =	
22 12 different foot print rubber stamps, 20 of each, 12 different blue room rubber stamps, 10 of each		\$ 1000	@\$3 =	
50 colored ink pads,			free	
23 4000 This is not here newspapers	\$ 1600	\$ 200	@\$1 =	
24 1000 atom bomb posters		\$ 100	@\$1 =	
25 1000 fit to die posters		\$ 150	@\$1 =	
26 1000 you are here posters (half price)		\$ 100	@5c. =	
27 2400 tickets for Lennon Tours		\$ 1000	@\$3 =	
28 1000 danger plastic boxes				
29 ice sculpture of Y.O. & J.L. (Ara Derderian charge)				
30 5 workers brought from NYC to help museum staff	\$ 1000			
31 supervisor from NYC to supervise installation	\$ 400			
32 tools and materials stolen in museum proper	\$ 100			
33 air fare for workers without tickets from apple	\$ 100			
TOTALS	TOTAL \$ 26,350	\$ 9,100	\$ 17,250	est. \$84,000

JOKO FILMS CHARGES

Titles for Erection by J.L.	\$ 400
1000 22 x 34 film posters for San Francisco	\$ 200

did not  
check



The Museum of Modern Art Archives, NY	Collection:	Series.Folder:
	Silverman Fluxus Archives	I.929

calligraphy - (printing) rush.

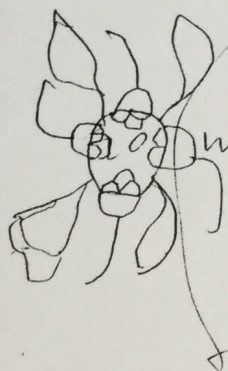
1000 film poster, double charge  
+ half fare (Normal 2.50)

new objects ↓

water - dock ~~150~~ 150

2 jigsaw puzzles pgs. 2 250 + 250 } 500  
100  
1100

4 vending machines +  
(acorn water tear contents. 400 400 -  
air  
cartshit)



miniature

+ photostat,  
paintings 30 ea. 500  
frames + research on text.

corner + wrap around pgs. 150  
150

small guitar - 20

vials for fragments. 30



The Museum of Modern Art Archives, NY	Collection:	Series.Folder:
	Silverman Fluxus Archives	I.929

## A DETAILED, ITEMIZED STATEMENT OF COSTS FOR EVERSON MUSEUM SHOW, PAID THROUGH GEORGE MACIUNAS

A	objects from July 4th schedule, part I, deduct: crying machine, backward signs, remote light switch, instant guru (deductions amounting to \$ 550) original bill was for \$ 5,000, adjusted amount:			\$ 4,450
1	water event invitation, 700 copies	a) design and typesetting b) plastic bags and envelopes c) printing, 2 versions d) labor: wetting, stuffing, sealing	\$ 200 \$ 60 \$ 40 \$ 200	Total \$ 500
1	research for addresses, labor, time to obtain addresses from some 10 different sources			\$ 200
2	disappearing announcement, 5000 copies	a) design and typesetting b) photographic paper, air shipped c) printing on plate maker d) hand scoring and cutting, labor e) envelopes	no charge \$ 300 \$ 500 \$ 150 \$ 50	Total \$ 1,000
3	poster design and mechanical (without printing)			\$ 400
4	box catalogue, design only			\$ 1,400
4	box catalogue production, 100 copies	a) raw boxes, Best Wood Box Co. b) vinyl backing, research & material c) paints and sealers d) foam for drawers e) various cards (400 copies) f) small plastic boxes g) photos of objects (1000 copies) h) calligraphy prints (rush double charge)	\$ 1000 \$ 200 \$ 40 \$ 20 \$ 40 \$ 200 \$ 300 \$ 200	Total \$ 2,000
5	unpacking crates, repacking, loading truck, 2 trips with truck, truck charges, gasoline, tolls, driver etc.			\$ 600
6	new objects:	a) water clock (two balls touching) 4ft. x 4" plexiglass tube b) 4 vending machines: acorn, tears, air, catshit, \$100 each + capsules c) two large jig-saw paintings, canvas on plywood, \$250 each d) corner and wrap around paintings with gold-leaf frame, \$150 each e) 20 miniature paintings, carved frames, texts, photostats, \$30 each f) small guitar \$20 and vials for broken vase fragments: \$30 i) chocolate chess set, and molds n) giant guitar, materials, cabinet-maker, string-maker, draftsman	\$ 150 \$ 400 \$ 500 \$ 300 \$ 600 \$ 50	Total \$ 2,000 \$ 400 \$ 2,000
7	water event plexiglass stands, tubes, plexiglass discs, labels			\$ 500
7	water event glassware: dinner & coffee set for 4, stainless ware, vases, jars, (also vase broken in TV event) binoculars etc.			\$ 400
9	6th dimension, 200 gas masks \$ 700, lenses \$ 200, labor for removing canisters and inserting lenses \$ 300, total:			\$ 1,200
12	portrait of John Lennon, 8' x 12' cabinet	a) raw cabinets without doors b) labor & materials for 100 doors	\$ 1000 \$ 1000	Total \$ 2,000
18	edible clothes for 3 models (at Hala Pietkiewicz, 152 Hawthorne ave. N.J.)			\$ 3,000
19	150 stainless steel <i>smile</i> boxes,	a) materials, stainless steel tubing, cut b) deposit to All Craft, fabricating co.	\$ 450 \$ 300	Total \$ 750
20	1000 plastic <i>smile</i> boxes (with mirrors)	a) stainless steel camera type mirrors b) plastic boxes, with imprinting c) gluing mirrors, labor	\$ 400 \$ 500 \$ 100	Total \$ 1,000
21	200 plastic <i>listen</i> boxes (with shells and labels glued in)			\$ 200
22	rubber stamps	a) 12 different foot print rubber stamps, 20 of ea (+ research for prints) b) 12 different blue room rubber stamps, 10 each (with texts) c) 50 colored ink pads	\$ 600 \$ 250 \$ 150	Total \$ 1,000
23	8000 <i>This is not here</i> newspapers	a) typesetting all text b) drawing plans (Shael Shapiro) c) mechanicals d) printing 8000, rush (double) charge	\$ 200 \$ 100 \$ 200 \$ 1100	Total \$ 1,600
25	1000 <i>fit to die</i> posters			\$ 100
26	1000 <i>you are here</i> posters (+ cost of 17 x 17 halftone)			\$ 150
27	2400 tickets for Lennon Tours, type, mechanicals and printing, cutting			\$ 100
28	1000 <i>danger</i> plastic boxes, boxes with imprint: \$400, inserts with imprint and hole: \$600			\$ 1,000
30	5 workers brought from NYC to help museum staff and air fare for workers without return tickets			\$ 1,100
31	charge by Shael Shapiro to help supervise installation at museum			\$ 400
32	printing 1000 copies of film poster	a) copy negatives, prints and halftones b) printing (rush, double charge)	\$ 150 \$ 350	Total \$ 500
33	many postcards (did not count) on chromkote paper			\$ 200
34	design of titles for film ERECTION			\$ 500
35	design of titles for film IMAGINE (+ set up charge)			\$ 500

TOTAL CHARGED AND PAID



The Museum of Modern Art Archives, NY	Collection: Silverman Fluxus Archives	Series.Folder: I.929
---------------------------------------	--	-------------------------

## A DETAILED, ITEMIZED STATEMENT OF COSTS FOR EVERSON MUSEUM SHOW, PAID THROUGH GEORGE MACIUNAS

A objects from July 4th schedule, part I, deduct: crying machine, backward signs, remote light switch, instant guru (deductions amounting to \$ 550) original bill was for \$ 5,000, adjusted amount:					\$ 4,450
1	water event invitation, 700 copies	a) design and typesetting	\$ 200		
		b) plastic bags and envelopes	\$ 60		
		c) printing, 2 versions	\$ 40		
		d) labor: wetting, stuffing, sealing	\$ 200	Total	\$ 500
1	research for addresses, labor, time to obtain addresses from some 10 different sources				\$ 200
2	disappearing announcement, 5000 copies	a) design and typesetting	no charge		
		b) photographic paper, air shipped	\$ 300		
		c) printing on plate maker	\$ 500		
		d) hand scoring and cutting, labor	\$ 150		
		e) envelopes	\$ 50	Total	\$ 1,000
3	poster design and mechanical (without printing)				\$ 400
4	box catalogue, design only				\$ 1,400
4	box catalogue production, 100 copies	a) raw boxes, Best Wood Box Co.	\$ 1000		
		b) vinyl backing, research & material	\$ 200		
		c) paints and sealers	\$ 40		
		d) foam for drawers	\$ 20		
		e) various cards (400 copies)	\$ 40		
		f) small plastic boxes	\$ 200		
		g) photos of objects (1000 copies)	\$ 300		
		h) calligraphy prints (rush double charge)	\$ 200	Total	\$ 2,000
5	unpacking crates, repacking, loading truck, 2 trips with truck, truck charges, gasoline, tolls, driver etc.				\$ 600
6	new objects:	a) water clock (two balls touching) 4ft. x 4" plexiglass tube	\$ 150		
		b) 4 vending machines: acorn, tears, air, catshit, \$100 each + capsules	\$ 400		
		c) two large jig-saw paintings, canvas on plywood, \$250 each:	\$ 500		
		d) corner and wrap around paintings with gold-leaf frame, \$150 each:	\$ 300		
		e) 20 miniature paintings, carved frames, texts, photostats, \$30 each:	\$ 600		
		f) small guitar \$20 and vials for broken vase fragments: \$30	\$ 50	Total	\$ 2,000
		l) chocolate chess set, and molds			\$ 400
		n) giant guitar, materials, cabinet-maker, string-maker, draftsman			\$ 2,000
7	water event plexiglass stands, tubes, plexiglass discs, labels				\$ 500
7	water event glassware: dinner & coffee set for 4, stainless ware, vases, jars, (also vase broken in TV event) binoculars etc.				\$ 400
9	6th dimension, 200 gas masks \$ 700, lenses \$ 200, labor for removing canisters and inserting lenses \$ 300, total:				\$ 1,200
12	portrait of John Lennon, 8' x 12' cabinet	a) raw cabinets without doors	\$ 1000		
		b) labor & materials for 100 doors	\$ 1000	Total	\$ 2,000
18	edible clothes for 3 models (at Hala Pietkiewicz, 152 Hawthorne ave. N.J.)				\$ 3,000
19	150 stainless steel smile boxes,	a) materials, stainless steel tubing, cut	\$ 450		
		b) deposit to All Craft, fabricating co.	\$ 300	Total	\$ 750
20	1000 plastic smile boxes (with mirrors)	a) stainless steel camera type mirrors	\$ 400		
		b) plastic boxes, with imprinting	\$ 500		
		c) gluing mirrors, labor	\$ 100	Total	\$ 1,000
21	200 plastic listen boxes (with shells and labels glued in)				\$ 200
22	rubber stamps	a) 12 different foot print rubber stamps, 20 of ea (+ research for prints)	\$ 600		
		b) 12 different blue room rubber stamps, 10 each (with texts)	\$ 250		
		c) 50 colored ink pads	\$ 150	Total	\$ 1,000
23	8000 This is not here newspapers	a) typesetting all text	\$ 200		
		b) drawing plans (Shael Shapiro)	\$ 100		
		c) mechanicals	\$ 200		
		d) printing 8000, rush (double) charge	\$ 1100	Total	\$ 1,600
25	1000 fit to die posters				\$ 100
26	1000 you are here posters (+ cost of 17 x 17 halftone)				\$ 150
27	2400 tickets for Lennon Tours, type, mechanicals and printing, cutting				\$ 100
28	1000 danger plastic boxes, boxes with imprint: \$400, inserts with imprint and hole: \$600				\$ 1,000
30	5 workers brought from NYC to help museum staff and air fare for workers without return tickets				\$ 1,100
31	charge by Shael Shapiro to help supervise installation at museum				\$ 400
32	printing 1000 copies of film poster	a) copy negatives, prints and halftones	\$ 150		
		b) printing (rush, double charge)	\$ 350	Total	\$ 500
33	many postcards (did not count) on chromkote paper				\$ 200
34	design of titles for film ERECTION				\$ 500
35	design of titles for film IMAGINE (+ set up charge)				\$ 500

TOTAL CHARGED AND PAID

\$ 31,000



The Museum of Modern Art Archives, NY	Collection:	Series.Folder:
	Silverman Fluxus Archives	I.929

## LENNON AND YOKO ONO PROJECTS BEING HANDLED BY GEORGE MACIUNAS - 1971

## PROTOTYPE OBJECTS

BOX OF SMILE, BY YOKO ONO	6 antique wood boxes with mirrors inside, gold stamped title	completion date July 11
APED ALARM CLOCK BY Y.O.	digital electric clock with tape player playing yokos scream as alarm, hours indicated by color, minute 1st digit by wood veneers, 2nd digit by grey scale micro amp. meter indicating voice amplitude	July 13
ANGER CIGARETTE CASE BY Y.O.	Silver logo and cross-bones on black background, black cigarettes with silver mouth	July 18
FILET TANK TAPE PLAYER, Y.O.	tape player with mercury switch connected to lever, playing <i>Working Class Hero</i> when tank is flushed	July 18
PAINTING TO HAMMER-A-NAIL-IN TRYING MACHINE BY Y.O.	hammer and plaque sets, each made of: ivory, rubber and leather	July 21
SHADOW TRIPTYCH BY Y.O.	coin operated dispenser of tears in containers - <i>explosives</i>	Aug.15
SIZE TRIPTYCH BY Y.O. - <i>Sizes</i>	a) cabinet showing 3 circular shadows on lower shelf and behind 3 doors on upper shelf: a sphere, a cylinder and a cone, with built in light source b) same cabinet with a black, white and color sphere behind 3 doors c) same cabinet with wood, metal and plastic sphere behind 3 doors	Aug.15
RECLINING NUDE BY Y.O. & J.L.	clear plastic box with 3 different enlarging mirrors on the rear (1/1m 1/2 & 1/3) and 3 magnifying lenses on the front (1/1, 1/3 & 1/6), 3 needles suspended inside	Aug.30
BACKWARD SIGNS BY J.L.	small box with 2 keyholes: through one visible only shadow, through another (by J.L.) visible a sign: <i>gone to lunch</i> .	Aug.30
FILM CLOCK BY Y.O. & J.L.	<i>ESAEPL, TEIUQ, ECNELIS, GNIKOMS ON</i> diorama type box with screen: hours indicated by movement of sun and moon on disk, minutes indicated by movement of a ship on the sea, (ship on cylinder, waves, illusion of movement by lights, seconds indicated by movement of aeroplane on cyl.	Sept.15
REMOTE LIGHT SWITCH A PAIR BY Y.O.	radio controlled remote light switch (up to a mile)	Aug.15
KINETOSCOPE BY J.L.	two left shoes in a box	Aug.15
PINBALL MACHINE BY J.L.	tall box with eye pieces on top (with hidden binoculars) and sign: <i>take off your shoes and look</i> . when looked through, binoculars would just show enlarged feet of stander	Sept.15
INSTANT GURU BY J.L.	pin ball machine where the ball after being shot out just disappears	Aug.15
	telephone stand with sign: <i>get your mantra here, put 10c in slot and listen</i> . the only message over the telephone' <i>Mummy, Mummy, Mummy</i>	Sept.15

## TYPOGRAPHY FOR RECORD JACKET OF NEW JOHN LENNON RECORD

1st side with performers information type laid out in spiral, with hpotes of all participants on outer ring.	July 20
2nd side with all the lyrics, type laid out in star.	

## REDECORATING CONFERENCE ROOM, 41ST FLOOR, 1760 BROADWAY

CEILING	photo-transparency of clouds mounted on egg-crate panels 2' x 4', with all the lighting, ventilation and speakers behind the ceiling. Light to be diffused through the clouds only. monochromatic (blue) photo transparency.	Sept.15
FLOOR	brown carpet already purchased	
WALLS	corner fake windows, wood moldings, shelving, wainscotting removed. all walls and column covered with mirrors	Sept.15
TABLE	leather 2 inch 4ft x 12ft slab supported by two pipes and containing built in disappearing: film and slide projector, record and tape player, audio and light controls, typewriter (only keyboard and slot visible) telephone, intercom, only receiver and keyboard visible), electric piano or organ (only keyboard visible), drink dispenser, pens, pads.	Sept.30
CHAIRS	design to be determined	

## FINDING, INVESTIGATING, SURVEYING SMALL ISLAND IN LESSER ANTILLES, LIMIT: 150 ACRES, \$300,000

preliminary inspection of 4 islands available in British Virgins, and one in Bahamas, photosurvey, soil samples, inventory of vegetation	July 24
soil tests, large scale contour map, plan of agricultural development, plan for water and electricity distribution, plan for building	Sept.15
stock, residence, work shop, barn etc.	1972-74
actual realization of plans	

## NEGOTIATION PURCHASING AND RENOVATION OF 132 - 140 GREENE ST. LOFT BUILDING

see attached copy of preliminary analysis

11



The Museum of Modern Art Archives, NY	Collection:	Series.Folder:
	Silverman Fluxus Archives	I.929

## LENNON AND YOKO ONO PROJECTS BEING HANDLED BY GEORGE MACIUNAS - 1971

## PROTOTYPE OBJECTS

BOX OF SMILE, BY YOKO ONO	6 antique wood boxes with mirrors inside, gold stamped title	completion date July 11
APED ALARM CLOCK BY Y.O.	digital electric clock with tape player playing yokos scream as alarm, hours indicated by color, minute 1st digit by wood veneers, 2nd digit by grey scale micro amp. meter indicating voice amplitude	July 13
ANGER CIGARETTE CASE BY Y.O.	Silver logo and cross-bones on black background, black cigarettes with silver mouth	July 18
FILET TANK TAPE PLAYER, Y.O.	tape player with mercury switch connected to lever, playing <i>Working Class Hero</i> when tank is flushed	July 18
PAINTING TO HAMMER-A-NAIL-IN TRYING MACHINE BY Y.O.	hammer and plaque sets, each made of: ivory, rubber and leather	July 21
SHADOW TRIPTYCH BY Y.O.	coin operated dispenser of tears in containers - capsules	Aug.15
SIZE TRIPTYCH BY Y.O. - Sizes	a) cabinet showing 3 circular shadows on lower shelf and behind 3 doors on upper shelf: a sphere, a cylinder and a cone, with built in light source b) same cabinet with a black, white and color sphere behind 3 doors c) same cabinet with wood, metal and plastic sphere behind 3 doors	Aug.15
DECLINING NUDE BY Y.O. & J.L.	clear plastic box with 3 different enlarging mirrors on the rear (1/1m 1/2 & 1/3) and 3 magnifying lenses on the front (1/1, 1/3 & 1/6), 3 needles suspended inside	Aug.30
BACKWARD SIGNS BY J.L.	small box with 2 keyholes: through one visible only shadow, through another (by J.L.) visible a sign: <i>gone to lunch.</i>	Aug.30
FILM CLOCK BY Y.O. & J.L.	ESAEPL, TEIUQ, ECNELIS, GNIKOMS ON diorama type box with screen: hours indicated by movement of sun and moon on disk, minutes indicated by movement of a ship on the sea, (ship on cylinder, waves, illusion of movement by lights, seconds indicated by movement of aeroplane on cyl.	Aug.15
REMOTE LIGHT SWITCH A PAIR BY Y.O.	radio controlled remote light switch (up to a mile)	Sept.15
KINETOSCOPE BY J.L.	two left shoes in a box	Aug.15
PINBALL MACHINE BY J.L.	tall box with eye pieces on top (with hidden binoculars) and sign: <i>take off your shoes and look.</i> when looked through, binoculars would just show enlarged feet of stander	Sept.15
INSTANT GURU BY J.L.	pin ball machine where the ball after being shot out just disappears telephone stand with sign: <i>get your mantra here, put 10c in slot and listen.</i> the only message over the telephone 'Mummy, Mummy, Mummy'	Aug.15

## TYPOGRAPHY FOR RECORD JACKET OF NEW JOHN LENNON RECORD

first side with performers information type laid out in spiral, with hpotes of all participants on outer ring.	July 20
second side with all the lyrics, type laid out in star.	

## REDECORATING CONFERENCE ROOM, 41ST FLOOR, 1700 BROADWAY

CEILING	photo-transparency of clouds mounted on egg-crate panels 2' x 4', with all the lighting, ventilation and speakers behind the ceiling. Light to be diffused through the clouds only. monochromatic (blue) photo transparency.	Sept.15
FLOOR	brown carpet already purchased	Sept.15
WALLS	corner fake windows, wood moldings, shelving, wainscotting removed. all walls and column covered with mirrors	Sept.30
TABLE	leather 2 inch 4ft x 12ft slab supported by two pipes and containing built in disappearing: film and slide projector, record and tape player, audio and light controls, typewriter (only keyboard and slot visible) telephone, intercom, only receiver and keyboard visible), electric piano or organ (only keyboard visible), drink dispenser, pens, pads.	
CHAIRS	design to be determined	

## FINDING, INVESTIGATING, SURVEYING SMALL ISLAND IN LESSER ANTILLES, LIMIT: 150 ACRES, \$300,000

preliminary inspection of 4 islands available in British Virgins, and one in Bahamas, photosurvey, soil samples, inventory of vegetation	July 24
soil tests, large scale contour map, plan of agricultural development, plan for water and electricity distribution, plan for building dock, residence, work shop, barn etc.	Sept.15
actual realization of plans	1972-74

## NEGOTIATION PURCHASING AND RENOVATION OF 132 - 140 GREENE ST. LOFT BUILDING

see attached copy of preliminary analysis



The Museum of Modern Art Archives, NY	Collection:	Series.Folder:
	Silverman Fluxus Archives	I.929

## JOHN LENNON AND YOKO ONO PROJECTS BEING HANDLED BY GEORGE MACIUNAS - 1971

## A. PROTOTYPE OBJECTS

		completion date
1. A BOX OF SMILE, BY YOKO ONO	6 antique wood boxes with mirrors inside, gold stamped title	July 11
2. TAPED ALARM CLOCK BY Y.O.	digital electric clock with tape player playing yokos scream as alarm, hours indicated by color, minute 1st digit by wood veneers, 2nd digit by grey scale micro amp. meter indicating voice amplitude	July 13
3. DANGER CIGARETTE CASE BY Y.O.	Silver logo and cross-bones on black background, black cigarettes with silver mouth	July 18
4. TOILET TANK TAPE PLAYER, Y.O.	tape player with mercury switch connected to lever, playing <i>Working Class Hero</i> when tank is flushed	July 18
5. PAINTING TO HAMMER A NAIL IN	hammer and plaque sets, each made of: ivory, rubber and leather	July 21
6. CRYING MACHINE BY Y.O.	coin operated dispenser of tears in containers	Aug.15
7. SHADOW TRIPTYCH BY Y.O.	a) cabinet showing 3 circular shadows on lower shelf and behind 3 doors on upper shelf: a sphere, a cylinder and a cone, with built in light source b) same cabinet with a black, white and color sphere behind 3 doors c) same cabinet with wood, metal and plastic sphere behind 3 doors	Aug.15
8. SIZE TRIPTYCH BY Y.O.	clear plastic box with 3 different enlarging mirrors on the rear (1/1m 1/2 & 1/3) and 3 magnifying lenses on the front (1/1, 1/3 & 1/6), 3 needles suspended inside	Aug.30
9. RECLINING NUDE BY Y.O. & J.L.	small box with 2 keyholes: through one visible only shadow, through another (by J.L.) visible a sign: <i>gone to lunch</i> .	Aug.30
10. BACKWARD SIGNS BY J.L.	ESAEPL, TEIUQ, ECNELIS, GNIKOMS ON	Aug.15
11. FILM CLOCK BY Y.O. & J.L.	diorama type box with screen: hours indicated by movement of sun and moon on disk, minutes indicated by movement of a ship on the sea, (ship on cylinder, waves, illusion of movement by lights, seconds indicated by movement of aeroplane on cyl.	Sept.15
12. REMOTE LIGHT SWITCH	radio controlled remote light switch (up to a mile)	Aug.15
13. A PAIR BY Y.O.	two left shoes in a box	Aug.15
14. KINETOSCOPE BY J.L.	tall box with eye pieces on top (with hidden binoculars) and sign: <i>take off your shoes and look</i> , when looked through, binoculars would just show enlarged feet of stander	Sept.15
15. PINBALL MACHINE BY J.L.	pin ball machine where the ball after being shot out just disappears	Aug.15
16. INSTANT GURU BY J.L.	telephone stand with sign: <i>get your mantra here, put 10c in slot and listen</i> , the only message over the telephone 'Mummy, Mummy, Mummy'	Sept.15

## B. TYPOGRAPHY FOR RECORD JACKET OF NEW JOHN LENNON RECORD

First side with performers information type laid out in spiral, with photos of all participants on outer ring.  
Second side with all the lyrics, type laid out in star.

July 20

## C. REDECORATING CONFERENCE ROOM, 41ST FLOOR, 1700 BROADWAY

7. CEILING	photo-transparency of clouds mounted on egg-crate panels 2' x 4', with all the lighting, ventilation and speakers behind the ceiling. Light to be diffused through the clouds only, monochromatic (blue) photo transparency.	Sept.15
2. FLOOR	brown carpet already purchased	
3. WALLS	corner fake windows, wood moldings, shelving, wainscoting removed, all walls and column covered with mirrors	Sept.15
4. TABLE	leather 2 inch 4ft x 12ft slab supported by two pipes and containing built in disappearing: film and slide projector, record and tape player, audio and light controls, typewriter (only keyboard and slot visible) telephone, intercom, only receiver and keyboard visible), electric piano or organ (only keyboard visible), drink dispenser, pens, pads.	Sept.30
5. CHAIRS	design to be determined	

## D. FINDING, INVESTIGATING, SURVEYING SMALL ISLAND IN LESSER ANTILLES, LIMIT: 150 ACRES, \$300,000

Preliminary inspection of 4 islands available in British Virgins, and one in Bahamas, photosurvey, soil samples, inventory of vegetation  
soil tests, large scale contour map, plan of agricultural development, plan for water and electricity distribution, plan for building  
dock, residence, work shop, barn etc.

Sept.15  
1972-74

## E. NEGOTIATION' PURCHASING AND RENOVATION OF 132 - 140 GREENE ST, LOFT BUILDING

See attached copy of preliminary analysis



The Museum of Modern Art Archives, NY	Collection:	Series.Folder:
	Silverman Fluxus Archives	I.929

## YOKO ONO AND JOHN LENNON PROJECTS BEING HANDLED BY GEORGE MACIUNAS -- 1971 PART 2

F. DESIGN OF INSIDE COVER SPREAD AND JACKET TYPOGRAPHY OF *FLY*, RECORD BY YOKO ONO

Double record inside cover spread with composite photograph collage of a) Joe Jones instruments playing on the sea shore (photo by Iain Macmillan) b) photo of Hungarian gypsies playing for a wedding superimposed on the beach photo and c) faces of performers superimposed on faces of gypsies. First record jacket with typography only. Second record jacket with Yoko's drawings and superimposed typography.

Sept.3

G. TITLE DESIGN FOR *ERECTION*, FILM BY JOHN LENNON

At end of the film all the titles appear in sequence of single letters till they fill the space occupied by completed fascade.

Sept.18

H. *THIS IS NOT HERE* SHOW AT EVERSON MUSEUM, SYRACUSE, OCT.9, 1971

1. Invitation to participants in water event, typography in form of bottle, wet paper in waterproof envelope. Sept. 3
2. Announcement card on photographic paper totally fading away in few days except for the telephone number Sept. 16
3. Poster saying *This is not here*, possibly with John's and Yoko's faces within type fading away Sept. 9
4. Catalogue, design to be determined Sept. 16
5. Retrospective of past objects shipped from Ascot on tubular (seamless) plexiglass stands of various diameters and heights Sept. 30
6. Exhibit of new objects described in Part 1, item A, with the addition of the following:
  - a) two plastic cubes stacked, top one leaking into the lower one water. A floating object in each cube would touch each other when all the water leaks from top to bottom cube.
  - b) two plastic cubes as above, instead bottom cube contains object that expands when becoming wet.
  - c) automatic dispenser, dispensing acorns
  - d) automatic dispenser dispensing metal slugs (counterfeit coins) for a dime
  - e) automatic dispenser dispensing capsules filled with air
  - f) automatic dispenser dispensing drink in cup made of water soluble paper (melting in water)
  - g) juke box playing wrong selections
  - h) corner painting (paintings to wrap around chair edge, corners etc.)
  - i) cut up paintings: white painting cut up into various jig saw shapes, little black square titled: *1/100th of Mona Lisa smile*, little white squares, one titled *clouds* (with detailed history of background material) another titled *flower* (also with history)
  - j) glass shoe, one whole, another shattered and in jewelry box (to be returned in 10 years)
  - k) wood hollow panel with small circular compartment, filled with various items and locked, wrong key hanging nearby
  - l) edible chess
  - m) variable sand timer, possibly filled with gas that reacts in various temperatures by affecting flow of sand
  - n) giant guitar, the size of grand piano, playable
7. Water event, invited participants providing the containers, Yoko Ono providing the water Sept. 30
8. Weight event, lead filled feather, pillow, pin-pong ball, basketball, shoe, hat, handkerchief, jacket, fountain pen, telephone etc. "
9. 6th dimension, largest room, all white, the only entry being through a telephone booth. All visitors are offered to wear masks, one to see the room from inside, mask with opaque eye glasses; another to see the room from outside, mask with clear glasses. 300 masks or hoods to be designed and made in black canvas, cloth, felt or soft vinyl. Visitors to be offered chocolate in response to a choice of mineral, vegetable or animal food.
10. Blue room: white room with the following: soft rubber ball with sign: *This sphere will be sharp point when it gets to the far side of the room in your mind*. an upright needle with sign: *Forget it*. Another needle with sign: *Needle*. A cup with sign: *Not to be appreciated until it's broken*. Another one with sign: *Mend*. A very large object with sign: *This is not here*. Long straight line with sign: *This line is a part of a large sphere, a straight line exists only in your mind*. Interior signs: *Stay until the room is blue*. *Do not disturb*. *Use ashtray for ashes*. Display of 4 spoons: *3 spoons*. Display of 4 spoons: *4 spoons*. A ladder leading to a small ceiling painting with very small word: *yes*, readable only with help of magnifying glass. Soundproof closet for listening to own heart beat.
11. Do it yourself room. white canvases, framed in baroque frames for *Draw Circle painting*, *Do It Yourself Painting*, *Painting to be stepped on*, *Kitchen Piece*, *Painting to hammer a nail* (3 versions: in ivory, rubber and leather)
12. Portrait of John Lennon as a young cloud. One wall covered with various chests opening in different ways, doors, fake doors, photographic doors, 3-D projected doors (by Ken Jacobs). Also all entries into rooms to have various doors, opening in various ways, hinged at floor, ceiling, center, doors cut in half etc.
13. Human maze. 16'x 16' maze with 2ft wide passages made from 1/4" plexiglass. Last compartment to be of one way mirror. Mirror facing out. Toilet inside (preferably usable)
14. Toilet. Toilet with boiling water, toilet playing *Working Class Hero* when flushed, toilet with foam instead of water, toilet stall doors opening in different ways or opening when not wanted, etc.
15. Exits: grille gate (by J.L.) small box (by Y.O.) "
16. Film environment, (wall paper) from 4 projected film loops, film program in auditorium "
17. Concert in Auditorium, program to be determined.
18. Fashion show of edible clothes (by J.L.) if not ready, to be held in N.Y.C. Jackets, skirts made from rice paper, sea weeds, bread loaf shoes, steak sandals, long train carrying soup, salad hats, spaghetti skirt, whipped cream hats, banana gloves, grapefruit bra, cheese tie, shirt front, sugar swim suit, salami bermuda shorts etc.

Oct.9

## I. CATALOG FOR IMAGINARY SHOW AT MUSEUM OF MODERN ART

Famous mostly modern masterpieces (paintings and sculpture) turned into household goods and furniture  
Detailed outline to follow in Part 3 report, mid September

Nov. 1971



The Museum of Modern Art Archives, NY	Collection:	Series.Folder:
	Silverman Fluxus Archives	I.929

MEMORANDUM ON THE MEETING OF NOVEMBER 20, 1971, 2-4PM. BETWEEN GEORGE MACIUNAS AND YOKO ONO, JOHN LENNON AND GENE SHERMAN. Also present were: Pete Bendry, Tom Basalari, Sara Seagull, Jan Penovich, Shael Shapiro.

1. Statement of account was discussed and the following items deducted: backward signs, remote light switch and instant guru from from the objects of schedule I. \$200 from new objects of schedule II, \$200 from water objects, contributions of G.Maciunas of H<sub>2</sub>O tanks, Max Neuhaus of pump whistle and Shael Shapiro of drink dispenser (these contributions to be charged to the contributors), Philip Corners concert of Yoko's Wood Piece, the \$200 would be paid by Yo ko directly to Philip; 1/2 of the cost of stainless steel smile boxes amounting to \$750, the other half having been already paid for materials and fabricator deposit; atom bomb poster unaccepted (\$200) and tools stolen at the museum to be compensated by the museum ( \$100). The total deductions were to cancel October bills of \$1700. The bill of Peter Moore for \$500 was going to be settled by Yoko Ono directly with Peter Moore.
2. Various materials were picked up such as: 4 completed catalogues, various contents for the catalogues, chocolate chess molds, toilet tape player, glassware, dinnerware etc., disappearing announcement left overs, 1000 plastic smile boxes, small plastic boxes for catalogue, 200 plastic listen boxes with shells but without labels, left over rubber stamps, left over T-shirts, towels, etc. soft cover Grapefruit books. The following items were kept by G.M. for completion: 1000 danger boxes, water+ball clock, picture clock, To be picked from the printer or G.M: 1000 fit to die posters, you are here posters, labels for listen boxes, postcards with holes; To be picked up from Best Wood box, 500 wood boxes for catalogue for the balance due of \$4000, 100 box sets having been paid by G.M with \$1000. (G.M. received from Yoko \$2000 for the first 100 catalogues, which instead of getting completed ones, she is getting 4 completed ones, \$1000 worth of raw wood box sets (paid by GM) and various miscellaneous parts such as vinyl fabric for backing, miniature white plastic boxes, foot prints, various cards, printed calligraphy, foam for drawers, catches, paint, glue etc. (so we are more or less even)
3. G. Maciunas notes that he not only did not charge for his own 500 hours of work (except for designing the catalogue) in arranging the show, nor did he charge setting hammering event or giant canvas for the TV show, nor for the various ideas and suggestions given and used by Iain Macmillan (for MOMA fly series catalogue) etc., but may end up losing money on account of mistakes made by factories & printers due to rushing or cancellations after purchases (glass balls, sugar frosting machine etc), in response to which Yoko insisted on being provided with bills from various factories, suppliers etc. and threatened to report or complain on G. Maciunas to the U.S. Internal Revenue if he failed to produce these bills. (I) G.M. noted however that many manufacturers or subcontractors did not submit bills and were paid in cash in order to obtain a better price by not having their income reported. Requirement of formal bills would have increased the cost by 20% (for instance the cost of wood box sets for catalogue originally would have cost \$6000 for 500 instead of \$5000)
4. Yoko Ono noted her regret to having allowed George M. to credit himself for realization and design of the show, not realizing perhaps that George provided precise specifications and plans for construction of: maze, weight objects, 2 jig saw puzzle part paintings, all miniature paintings (their text), portrait of John cabinets, size box, shadow boxes, 6th dimension masks and objects, many tour tickets, plus design (ideas) for water wet invitation, disappearing announcement, disappearing face poster, unfolding spiral catalog, etc.
5. John Lennon requested George to provide him with prints or negatives of Yoko's show at AG gallery in 1961 plus any documentation such as programs of the series at Yoko's loft, concerts at Village Gate, Carnegie Recital Hall, Living theater etc.



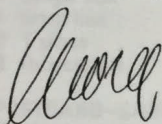
The Museum of Modern Art Archives, NY	Collection:	Series.Folder:
	Silverman Fluxus Archives	I.929

Dear Yoko;

5 reasons why you should avoid me:

1. No self righteous person should associate with a thief (*where did the money go ?*), a liar (*Your memorandum of the Nov. 20th meeting sent to us was full of such contradictions and mistakes which could be called lies*) and convicted criminal (*you are a second offender in many ways*). Italics are descriptions of me quoted from your letter.
2. I am too expensive to you.
3. You are too expensive to me. (I will be busy this winter making up for lost time and money)
4. Being anti-Stalinist, you should not ignore advise of *Everybody* (*forget about him*)
5. My Composition 1971 was semantically clear! .... *participants in this festival until the next one comes along*, rather than ... *until another comes along*.  
*"denoting a particular thing — often in antithesis to another, other"* (Webster's definition of *one*)  
 particular thing in this case being Charlottes ego-centric avant-garde festival. Therefore it is meant *until the next Charlottes festival comes along*.

best regards and wishes for your new ventures





The Museum of Modern Art Archives, NY	Collection:	Series.Folder:
	Silverman Fluxus Archives	I.929

# JOKO JUKE JOINT PRELIMINARY PLAN

## CAPSULE DISPENSERS

- 1 air
- 1 tear
- 1 acorn
- 1 catshit

## 3 STAMP DISPENSERS

- 1 metal slug or short change
- 4 tickets (12 different kinds)
- 3 island (lennonland) post (9 different kinds)

## OBJECT DISPENSERS

- 1 plastic gloves
- 10 rubber stamps
- 1 white chess pocket set
- 1 smile box
- 1 danger box
- 1 listen box
- 2 T shirts
- 8 flux-objects

## POSTCARD-CARD DISPENSERS

- 1 JL satyr
- 1 YO to see the sky
- 5 part paintings
- 10 event cards

## DRINK DISPENSERS

- 1 Lennonade in leaking-disintegrating cup
- 1 fluxdrink (tea with salt)

## VIEWERS

- 2 mutoscopes by JL (distant and near)
- 4 film loop viewers (bottoms, legs, fly, clock)
- 2 speeded up film viewers (Apotheosis, Erection)
- 1 shadow box
- 1 sizes
- 2 reclining nudes
- 1 water clock
- 1 picture clock

## SOUND DISPENSERS

- 1 juke box - wrong selections
- 1 Joe Jones orchestra

## GAMES

- 1 pinball machine
- 2 carousel horses
- 2 ping-pong (against wall) corrugated, racket with hole
- 1 shooting gallery (hitting funny objects)
- 1 driving tester (misaligned wheel)

## TURNSTILES TO SEPARATE ROOMS

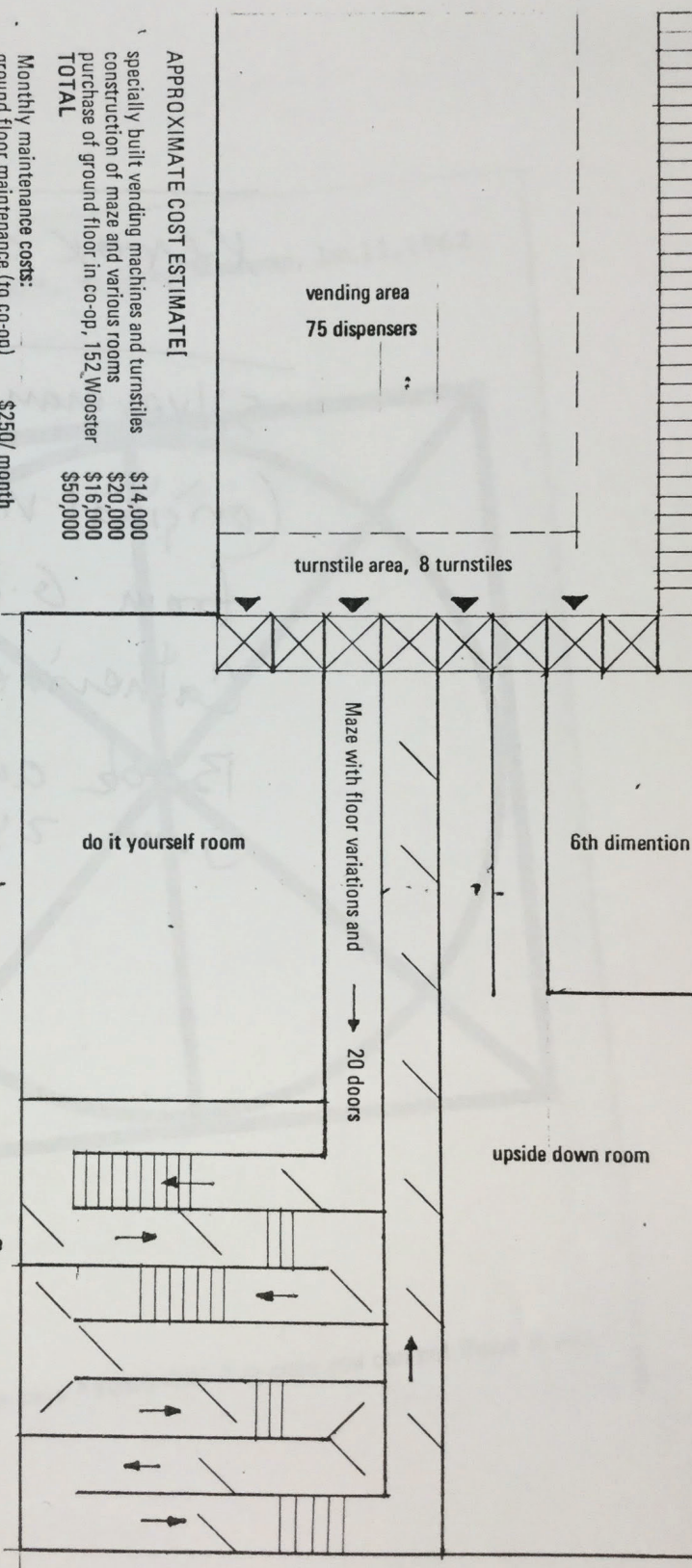
- 6th dimention - tactile room
- Do It Yourself room
- Corridor of doors - Port of LJ as a young cloud maze
- Ayo's floor variations (combine with maze?)
- Weight room
- Upside down room
- Half room

Monthly maintenance costs:  
ground floor maintenance (to co-op)  
maintenance man and guard  
TOTAL MONTHLY MAINT.

\$250/ month  
\$250/ month  
\$500

APPROXIMATE COST ESTIMATE!  
specially built vending machines and turnstiles  
construction of maze and various rooms  
purchase of ground floor in co-op, 152, Wooster  
TOTAL

\$14,000  
\$20,000  
\$16,000  
\$50,000





The Museum of Modern Art Archives, NY	Collection:	Series.Folder:
	Silverman Fluxus Archives	I.929

Xerox copy

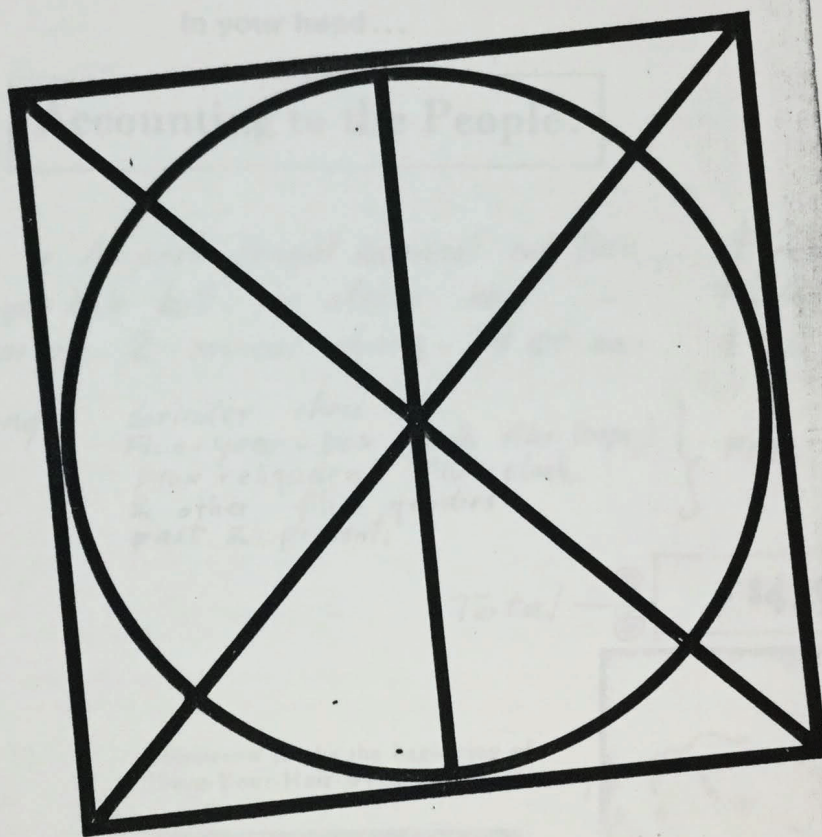
Silverman Fluxus Collection  
(original vintage photo copy,  
from G.M. Estate, to  
Catherine Morris for  
Book on Fluxhouse Coop.  
June 24, 2004)



FOR STUDY PURPOSES ONLY. NOT FOR REPRODUCTION.

The Museum of Modern Art Archives, NY	Collection:	Series.Folder:
	Silverman Fluxus Archives	I.929

HOMAGE TO YOKO ONO \*, by George Maciunas, Jan.11,1962



\* the diagram says "YOKO ONO " in case you can not figure it out.



The Museum of Modern Art Archives, NY	Collection:	Series.Folder:
	Silverman Fluxus Archives	I.929

# Wines Internationale..

the world's largest wine club

**No boiling. No risk.**

When those bells  
start ringing  
in your head...

## Accounting to the People:

Round trip to Airport Freight terminal cab fare \$ 20  
 Ayo's finger hole kit - in attache case - \$ 300  
 Takako Saito, 2 musical chairs - \$ 80 ea: \$ 160 } + postal \$ 9

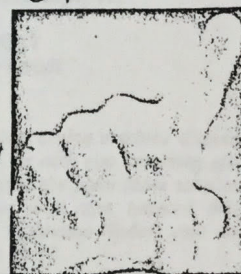
Also mailing: Grinder chess set  
 Flux-year-box (with film loops) } Free  
 Flux reliquary, Flux clock  
 & other flux goodies  
 past & present.

mailed from Archiv Sohn

Total → **\$489**

Tomorrow marks the beginning of  
 "Save-Your-Hair-Week"

**Guarantee:** If you are not satisfied within  
 30 days, the money you have paid for treatment will be  
 refunded on request. You are the sole judge.





The Museum of Modern Art Archives, NY	Collection:	Series.Folder:
	Silverman Fluxus Archives	I.929

PRESS RELEASE - APRIL 1, 1970

JOINT YOKO ONO, JOHN LENNON, & FLUXGROUP PROJECT

FLUXFEST PRESENTS YOKO ONO +\*, 1 TO 8PM, AT JOE JONES STORE, 18 N.MOORE ST. CANAL IND STATION.

**OPENING: APR.11,4PM. COME IMPERSONATING JOHN LENNON & YOKO ONO, GRAPEFRUIT BANQUET**

*Banquet will feature: grapefruit wine, grapefruit hors d'oeuvre, marinated grapefruit, grapefruit soup, grapefruit pancakes, grapefruit dumplings, grapefruit mashed potatoes, various grapefruit deserts; (by G.Maciunas, Yoshimasa Wada, Bici & Geoff Hendricks, Bob Watts.)*

**APR.11-17: DO IT YOURSELF, BY YOKO + EVERYBODY**

*Cutting paintings of other artists, braking & restoring objects, producing paintings by walking on them, wearing them, washing floor with them, throwing food, garbage on them; shadow painting, driving nails into various objects & materials, watering, burning, various objects, making objects and events from various Flux-kits (suicide kit, jewelry kit, medical kit, etc.)*

**APR.18-24: TICKETS BY JOHN LENNON + FLUXAGENTS**

*Selling to the public various tickets to desolate places, miserable shows, distant places via difficult passage, to street corners, buildings, tickets to visit famous people (by Y.Wada), many tickets to same seat, same day show (Ben Vautier), Outdated tickets (G.Maciunas)*

**APR.25-MAY 1: CLINIC BY YOKO ONO + HI RED CENTER**

*Various measurments are taken of each visitor by white coated attendants. Measurments of head volume, mouth, palm, between fingers or pocket capacity; shoe & foot difference, extended tongue length, inflated cheek width, hair strength, forefinger punch strength, kick strength, hand grip strength (crushing egg etc.), distance to blow out candle, hair strength; vision above forehead, X-ray vision, saliva or tear production, vision with wrong spectacles, smell sensitivity, pain sensitivity, electrical conductivity, temperature inside shoe, pocket; number of hairs in nostril, weight of pocket fuzz, weight with one foot off the scale, maximum and minimum kick, minimum sway, blind finger aim, stomach elasticity, capacity to shrink or expand, etc. etc.*

**MAY 2-8: BLUE ROOM BY YOKO + FLUXMASTERLIARS**

*Room, windows, doors, sidewalk etc. to be imagined to be something other than what they are; absent objects to be imagined as present, imaginary entertainment: food, music and company, etc.*

**MAY 9-15: WEIGHT & WATER BY YOKO + FLUXFIREMEN**

*Objects characterized by weight rather than shape (very large & light, very small & heavy etc)  
Water supplied to flux-participants giving it variety of shapes and movements.*

**MAY 16-22: CAPSULE BY YOKO + FLUX SPACE CENTER**

*A 3'x 3' x 3' enclosure (capsule) having various film loops projected on its walls and ceiling to a single viewer inside: fall, carousel (G.Maciunas); screen transition, single frame exposures (Paul Sharits); transition from white to black (George Brecht) transition through chromatic color scale (Ayo); crowding-in, compressing (Yoko Ono); flight, swim etc. (Bob Watts); slide projection of diffusion in liquid (Maciunas); projection of moving cockroaches; flicker (J.Cavanaugh) etc.*

**MAY 23-29: PORTRAIT OF JOHN LENNON AS A YOUNG CLOUD BY YOKO + EVERYBODY**

*A wall of many drawers and doors, all empty inside except one with a microscope titled: "John's smile"*

**MAY 30-JUNE 5: THE STORE BY YOKO + FLUXFACTORY**

*Vending machines (coin operated): machine receiving deposited objects and making them disappear, crying machine dispensing tears, machine dispensing sky, air (by Yoko Ono); drink dispenser dispensing frink with cup missing, or with cup comming after drink, with water soluble cup, change machine dispensing penny for a dime, nut dispenser dispensing into the palm loose sand or glue, dispenser of an endless string (by G.Maciunas); Cigarette dispenser dispensing prepared cigarettes, with rope, tobacco, dried fruit skins etc. mixed in the tobacco, machine dispensing incence and smoke of various mixtures (by Yoshimasa Wada); rain machine (Ayo). Sale of body accessories: halos, horns, 3rd eyes, tails, hoofs, skin blemishes, scars, etc. (by Yoko Ono) Sale of Flux-shop products: games, puzzles, kits, jokes, gags, events, relics, foods, drugs, sports, clocks, playing cards, furniture, etc.etc. films, music boxes, music machines, postage stamps, maps, atlases, tattoos etc.*

**JUNE 6-12: EXAMINATION BY YOKO + FLUXSCHOOL**

*Various questions and other tasks submitted to participants in a classroom environment. (Yoko Ono, Geoff Hendricks, Bob Watts, Mieko Shiomi, Robert Filliou).*

For further information contact: George Maciunas, 349 W.Broadway apt.11, New York 10013, tel.: (212) 966-6986



The Museum of Modern Art Archives, NY	Collection:	Series.Folder:
	Silverman Fluxus Archives	I.929

Dear Yoko;

To avoid endless oscillating and fruitless arguments for which neither of us have time, I will answer only important questions:  
1) enclosed is a very detailed accounting of expences. I was informed by 80% of the sources that you have not inquired them to check the accuracy of the costs, although you are welcome to do so. Furthermore, you will note that I have not charged you for any retainer as you have mistakenly assumed. (please check this with Gene Sherman). Should you have any questions please refer to the attached statement and not to some rumours or fictitious *investigations*. I Can't reply with facts to abstract questions.

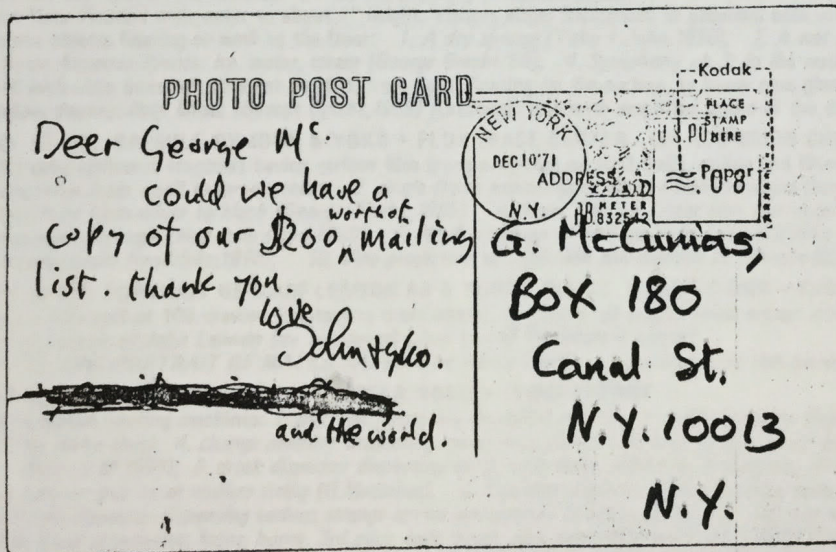
2) Regarding the chart I am working on, attached is a self explanatory note. You are welcome to submit any documents you think I may not have in support of any claims.

3) Also enclosed is a box with cards I printed when we did your *do it yourself dance festival* in Feb. 1966.

Seasons greetings to you and John,

george

PS: You asked for the mailing list, but I gave Sara some 20 pages of it.



#### NOTE ON CHART

This chart is a graphic summary of documents relating to the development of *Event, Happening, Action music, Concept art, Ready-made-event, Earth work, Chance operations, Multi-media, inter-media*, etc.

To insure historical authenticity, information in this chart (especially dates) has been compiled from sources substantiated either by

- 1) public record of dated performance (library held program) or
- 2) description by more than one witness, or
- 3) review in a periodical, or



The Museum of Modern Art Archives, NY	Collection: Silverman Fluxus Archives	Series.Folder: I.929
---------------------------------------	--	-------------------------

Dear Yoko;

To avoid endless oscillating and fruitless arguments for which neither of us have time, I will answer only important questions:  
1) enclosed is a very detailed accounting of expences. I was informed by 80% of the sources that you have not inquired them to check the accuracy of the costs, although you are welcome to do so. Furthermore, you will note that I have not charged you for any retainer as you have mistakenly assumed. (please check this with Gene Sherman). Should you have any questions please refer to the attached statement and not to some rumours or fictitious investigations. I Can't reply with facts to abstract questions.

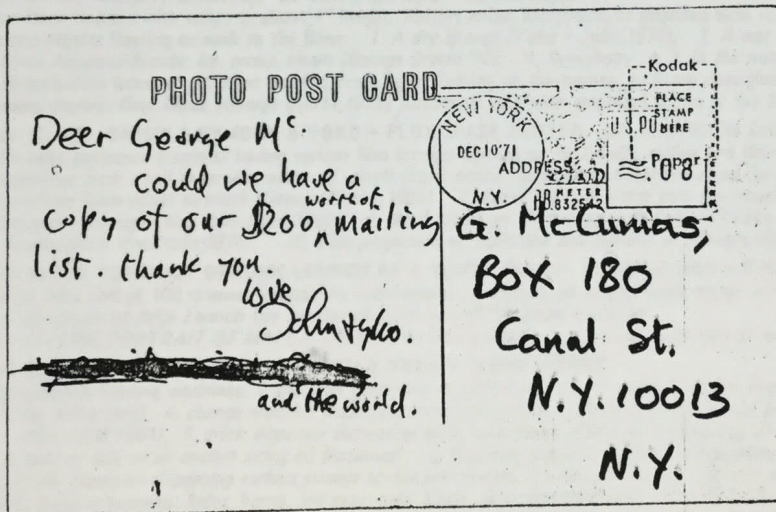
2) Regarding the chart I am working on, attached is a self explanatory note. You are welcome to submit any documents you think I may not have in support of any claims.

3) Also enclosed is a box with cards I printed when we did your *do it yourself dance festival* in Feb. 1966.

Seasons greetings to you and John,

george

PS: You asked for the mailing list, but I gave Sara some 20 pages of it.



#### NOTE ON CHART

This chart is a graphic summary of documents relating to the development of *Event, Happening, Action music, Concept art, Ready-made-event, Earth work, Chance operations, Multi-media, inter-media*, etc.

To insure historical authenticity, information in this chart (especially dates) has been compiled from sources substantiated either by

- 1) public record of dated performance (library held program) or
- 2) description by more than one witness, or
- 3) review in a periodical, or

4) copyrighted publication dated within few years of the composition date.

Any information derived from opinions, vague memories, unsubstantiated claims and forgeries have been omitted.

Generally, the chart records only contributions of composers-artists. Performers have been omitted unless they contributed significantly to a realization other than, or beyond that of one intended by the composer. (Tudor, Paik etc.)



The Museum of Modern Art Archives, NY	Collection:	Series.Folder:
	Silverman Fluxus Archives	I.929

FLUXFEST PRESENTATION OF JOHN LENNON & YOKO ONO + \* 1 TO 8PM, AT JOE JONES STORE, 18 N. MOORE ST. (AT CANAL.

OPENING: APR. 11, 4PM. GRAPEFRUIT FLUX-BANQUET: *grapefruit hors d'oeuvre, grapefruit soup, grapefruit dumplings, grapefruit mashed potatoes, grapefruit rice stuffing, grapefruit pancakes, grapefruit icecream, grapefruit wine, grapefruit cocktail, etc.* (by Flux-chefs)

APR. 11-17: DO IT YOURSELF. BY JOHN & YOKO + EVERYBODY

1. *Painting to be stepped on*, (Yoko Ono '61) ink pad as door mat.
2. *Painting to hammer a nail* (Yoko Ono '61)
3. *2 Eggs* (John Lennon '70)
4. *Flux-eggs* (G.M.) eggs filled with paint & to be thrown against wall.
5. *Draw Circle painting* (Yoko Ono '64)
6. *Graffiti wall*
7. *Kitchen Piece* (Yoko Ono '60) painting to wipe hands and floor with.
8. *Osmosis* (G.M. '60) india ink onto puddle of water.

APR. 18-24: TICKETS BY JOHN LENNON + FLUXTOURS

Selling to the public various tickets: *desolate, unknown, funny 7 distant places* (\$1 to \$300 [for Siberia]), *Chinese theatre, sky tours, abandon buildings & narrow streets* (10¢) (John Lennon); *tickets to visit famous people* (Y. Wada); *100 tickets to same seat, same day show* (10¢) (Ben Vautier); *tickets to locked up theatre* (Ben Vautier); *outdated tickets* (10¢) (G.M.). Also available will be lottery tickets to win tickets.

APR. 25-MAY 1: MEASURE BY JOHN & YOKO + HI RED CLINIC + FLUXDOCTORS (by Hi Red Center unless noted otherwise)

Various measurements are taken of each visitor by white coated attendants in a clinic environment: *head volume, mouth, palm, pocket capacity, extended tongue length, hair strength, maximum kick*; by Bob Watts: *shoe/foot difference, inflated cheek width, temperature inside shoe or pocket, weight of pocket fuzz*; by G. Maciunas: *forefinger punch strength, kick strength, hand grip strength (crushing egg), vision above forehead, saliva or tear production, vision with wrong spectacles, smell, pain sensitivity, number of hairs in nostril, weight with one foot off the scale, minimum sway, stomach elasticity, capacity to shrink or expand*; by Brian Lane: *distance to blow out candle, X-ray vision*; by Joe Jones: *electric chair to measure electric conductivity and sound sensitivity (in window)*; by Yoko Ono: *distance from the store to the nearest water*; by John Lennon: *distance from the nearest water to the store.* (\$1 ADMISSION CHARGE)

MAY 2-8: BLUE ROOM BY JOHN & YOKO + FLUXLIARS (visitors should be dressed in white)

Entire room (floor, walls, ceiling), exterior (door & window), and interior furnishings are to be white.

1. soft rubber ball with sign: *This sphere will be a sharp point when it gets to the far side of the room in your mind.* (Yoko Ono '64)
2. an upright needle with sign: *Forget it.* (Yoko Ono) another one with sign: *Needle* (John Lennon, 1970)
3. A cup on a table with sign: *Not to be appreciated until it's broken,* (Yoko Ono '66). another one with sign: *Mend,* (Yoko Ono '66)
4. A very large box with sign: *This is not here* (Yoko Ono '67)
5. window sign: *This window is 2000ft wide* (Yoko Ono '67), also *This window is 5ft wide* (John Lennon '70)
6. Long straight line with sign: *This line is a part of a large sphere, a straight line exists only in your mind,* (Yoko Ono, 1966 & 70)
7. Other interior signs: *Stay until the room is blue* (Yoko Ono '66); *Do not disturb* (John Lennon '70); *Use ashtray for ashes* (Yoko Ono '66)
8. Signs by George Brecht (1961): *No Smoking, Exit (on blank wall), Entry (on exit), forget this, listen, location, silence (at exit), middle (at edge of room), day/night (at night/day).*
9. Exterior signs: *spring, rain, sky, wind, etc. (according to weather)* (Yoko Ono '67)
- Window display: 2 sets of 4 spoons, one set with sign: *3 spoons* (Yoko Ono '67), and another with sign: *4 spoons* (John Lennon, 1970)

MAY 9-15: WEIGHT & WATER BY JOHN & YOKO + FLUXFAUCET

Store floor flooded with water to about 1" height. Visitors either barefooted or provided with rubber boots with weights (Yoko + Maciunas)

- Various objects floating or sunk to the floor:
1. *A dry sponge* (Yoko + John, 1970);
  2. *A wet sponge* (Yoko + John, 1970)
  3. *Three Aqueous Events: ice, water, steam* (George Brecht '60);
  4. *Symphony no. 3: in the water* (George Brecht, 1964)
  5. 10 look-alike boxes of different weights, from light, floating on the surface, to heavy ones glued to the floor. (Yoko + Takako Saito)
- Window display: *Drip Music* (George Brecht, 1959) Automatic drip with amplified sound of the drip, (realized by Joe Jones)

MAY 16-22: CAPSULE BY JOHN & YOKO + FLUX SPACE CENTER (\$1 ADMISSION CHARGE)

A 3ft cube enclosure (capsule) having various film loops projected on its 3 walls, ceiling and floor to a single viewer inside, about 8 minutes.

1. *transition from small to large screens*;
2. *single frame exposures of Sears Catalogue pages* (both by Paul Sharits, 1966)
3. *transition from white to black* (George Brecht, 1965)
4. *linear fall*;
5. *linear turn (carousel fashion)* (both by G. Maciunas, 1966)
6. *transition through color scale* (Ayo, 1969);
7. *No. 4 (close up of walking nude buttock)* (Yoko Ono, 1966)
8. *Flicker* (J. Cavanaugh, 1965)
9. *clouds* (Geoff Hendricks, 1970);
10. *slide projection of: diffusion and osmosis of solvents* (G. Maciunas, 1969)

MAY 23-29: PORTRAIT OF JOHN LENNON AS A YOUNG CLOUD BY YOKO ONO + EVERYPARTICIPANT

A 6ft x 10ft wall of 100 drawers (containing more boxes), and doors, all empty inside except one with a microscope entitled: *John's smile.*

*Musical portrait of John Lennon* (by Joe Jones) when one of the doors is opened.

MAY 23, 7PM. PORTRAIT OF MALKA SAFRO, by Henry Flynt, performed by him on violin.

MAY 30-JUNE 5: THE STORE BY JOHN & YOKO + FLUXFACTORY

Coin operated vending machines:

1. *machine devouring deposited objects*,
2. *crying machine dispensing tears*,
3. *machine dispensing sky* (air, all 3 by Yoko Ono),
4. *change machine dispensing metal slugs (fake coins for a penny)* (John Lennon),
5. *change machine dispensing pen for a dime* (G.M. 1951),
6. *drink dispenser dispensing drink with water soluble or leaking cup* (G.M.),
7. *nut dispenser dispensing into palm loose sand or glue or an endless string* (G. Maciunas),
8. *Cigarette dispenser dispensing cigarettes with rope, dried fruit, sawdust & other fillin*
9. *perfume dispenser dispensing various strange scents and smokes* (Yoshimasa Wada),
10. *rain machine* (Ayo)

Sale of body accessories: *halos, horns, 3rd eyes, tails, hoofs, skin blemishes, scars, etc.* (Yoko Ono)

Sale of Flux-shop products: *games, puzzles, jokes, gags, relics, foods, drinks, drugs, sports, playing cards, furniture, films, music boxes and machines, postage stamps, envelopes, maps, atlases, tattoos, posters, boxes, books, clocks, etc.*

JUNE 6-12: EXAMINATION BY JOHN & YOKO + FLUXSCHOOL

Various questions, lectures and other possible and impossible tasks submitted to participants in a classroom environment.

(George Brecht, Robert Filliou, Bici Hendricks, Geoff Hendricks, Henry Flynt, John Lennon, George Maciunas, Yoko Ono, Ben Patterson, Mieko Shiomi, Ben Vautier, Bob Watts.)

FOR FURTHER INFORMATION CALL: 966 6986 OR 925 7360



The Museum of Modern Art Archives, NY	Collection:	Series.Folder:
	Silverman Fluxus Archives	I.929

UXFEST PRESENTATION OF JOHN LENNON & YOKO ONO + \* 1 TO 8PM, AT JOE JONES STORE, 18 N. MOORE ST. (AT CANAL)

ENING: APR. 11, 4PM. GRAPEFRUIT FLUX-BANQUET: grapefruit hors d'oeuvre, grapefruit soup, grapefruit dumplings, grapefruit  
shed potatoes, grapefruit rice stuffing, grapefruit pancakes, grapefruit icecream, grapefruit wine, grapefruit cocktail, etc. (by Flux-chefs)

R. 11-17: DO IT YOURSELF. BY JOHN & YOKO + EVERYBODY

Painting to be stepped on, (Yoko Ono '61) ink pad as door mat. 2. Painting to hammer a nail (Yoko Ono '61) 3. 2 Eggs (John Lennon '70)  
Flux-eggs (G.M.) eggs filled with paint & to be thrown against wall. 5. Draw Circle painting (Yoko Ono '64) 6. Graffiti wall  
Kitchen Piece (Yoko Ono '60) painting to wipe hands and floor with. 8. Osmosis (G.M. '60) india ink onto puddle of water.

R. 18-24: TICKETS BY JOHN LENNON + FLUXTOURS

ing to the public various tickets: desolate, unknown, funny 7 distant places (\$1 to \$300 [for Siberia]), Chinese theatre, sky tours, abandoned  
dings & narrow streets (10¢) (John Lennon); tickets to visit famous people (Y. Wada); 100 tickets to same seat, same day show (10¢)  
n Vautier); tickets to locked up theatre (Ben Vautier); outdated tickets (10¢) (G.M.). Also available will be lottery tickets to win tickets.

R. 25-MAY 1: MEASURE BY JOHN & YOKO + HI RED CLINIC + FLUXDOCTORS (by Hi Red Center unless noted otherwise)

ious measurements are taken of each visitor by white coated attendants in a clinic environment: head volume, mouth, palm, pocket  
acity, extended tongue length, hair strength, maximum kick; by Bob Watts: shoe/foot difference, inflated cheek width, temperature inside  
9 or pocket, weight of pocket fuzz; by G. Maciunas: forefinger punch strength, kick strength, hand grip strength (crushing egg), vision  
ve forehead, saliva or tear production, vision with wrong spectacles, smell, pain sensitivity, number of hairs in nostril, weight with one foot  
the scale, minimum sway, stomach elasticity, capacity to shrink or expand; by Brian Lane: distance to blow out candle, X-ray vision;  
Joe Jones: electric chair to measure electric conductivity and sound sensitivity (in window); by Yoko Ono: distance from the store to  
nearest water; by John Lennon: distance from the nearest water to the store. (\$1 ADMISSION CHARGE)

Y 2-8: BLUE ROOM BY JOHN & YOKO + FLUXLIARS (visitors should be dressed in white)

ire room (floor, walls, ceiling), exterior (door & window), and interior furnishings are to be white.  
oft rubber ball with sign: This sphere will be a sharp point when it gets to the far side of the room in your mind. (Yoko Ono '64)  
n upright needle with sign: Forget it. (Yoko Ono) another one with sign: Needle (John Lennon, 1970) 3. A cup on a table with sign:  
to be appreciated until it's broken, (Yoko Ono '66). another one with sign: Mend, (Yoko Ono '66) 4. A very large box with sign:  
s is not here (Yoko Ono '67) 5. window sign: This window is 2000ft wide (Yoko Ono '67), also This window is 5ft wide (John Lennon '70)  
ong straight line with sign: This line is a part of a large sphere, a straight line exists only in your mind, (Yoko Ono, 1966 & 70)  
ther interior signs: Stay until the room is blue (Yoko Ono '66); Do not disturb (John Lennon '70); Use ashtray for ashes (Yoko Ono '66)  
igns by George Brecht (1961): No Smoking, Exit (on blank wall), Entry (on exit), forget this, listen, location, silence (at exit),  
dle (at edge of room), day/night (at night/day). 9. Exterior signs: spring, rain, sky, wind, etc. (according to weather) (Yoko Ono '67)  
dow display: 2 sets of 4 spoons, one set with sign: 3 spoons (Yoko Ono '67), and another with sign: 4 spoons (John Lennon, 1970)

Y 9-15: WEIGHT & WATER BY JOHN & YOKO + FLUXFAUCET

re floor flooded with water to about 1" height. Visitors either barefooted or provided with rubber boots with weights (Yoko + Maciunas)  
ious objects floating or sunk to the floor: 1. A dry sponge (Yoko + John, 1970); 2. A wet sponge (Yoko + John, 1970)  
Three Aqueous Events: ice, water, steam (George Brecht '60); 4. Symphony no. 3: in the water (George Brecht, 1964)  
10 look-alike boxes of different weights, from light, floating on the surface, to heavy ones glued to the floor. (Yoko + Takako Saito)  
dow display: Drip Music (George Brecht, 1959) Automatic drip with amplified sound of the drip, (realized by Joe Jones)

Y 16-22: CAPSULE BY JOHN & YOKO + FLUX SPACE CENTER (\$1 ADMISSION CHARGE)

ft cube enclosure (capsule) having various film loops projected on its 3 walls, ceiling and floor to a single viewer inside, about 8 minutes.  
ransition from small to large screens; 2. single frame exposures of Sears Catalogue pages (both by Paul Sharits, 1966)  
ransition from white to black (George Brecht, 1965) 4. linear fall; 5. linear turn (carrousel fashion) (both by G. Maciunas, 1966)  
ransition through color scale (Ayo, 1969); 7. No. 4 (close up of walking nude buttock) (Yoko Ono, 1966) 8. Flicker (J. Cavanaugh, 1965)  
louds (Geoff Hendricks, 1970); 10. slide projection of: diffusion and osmosis of solvents (G. Maciunas, 1969)

Y 23-29: PORTRAIT OF JOHN LENNON AS A YOUNG CLOUD BY YOKO ONO + EVERYPARTICIPANT

ft x 10ft wall of 100 drawers (containing more boxes), and doors, all empty inside except one with a microscope entitled: John's smile.  
ical portrait of John Lennon (by Joe Jones) when one of the doors is opened.

Y 23, 7PM. PORTRAIT OF MALKA SAFRO, by Henry Flynt, performed by him on violin.

Y 30-JUNE 5: THE STORE BY JOHN & YOKO + FLUXFACTORY

n operated vending machines: 1. machine devouring deposited objects, 2. crying machine dispensing tears, 3. machine dispensing sky (air)  
3 by Yoko Ono), 4. change machine dispensing metal slugs (fake coins for a penny) (John Lennon), 5. change machine dispensing penny  
a dime (G.M. 1951), 6. drink dispenser dispensing drink with water soluble or leaking cup (G.M.), 7. nut dispenser dispensing into palm  
e sand or glue or an endless string (G. Maciunas), 8. Cigarette dispenser dispensing cigarettes with rope, dried fruit, sawdust & other filling,  
erfume dispenser dispensing various strange scents and smokes (Yoshimasa Wada), 10. rain machine (Ayo)  
e of body accessories: halos, horns, 3rd eyes, tails, hoofs, skin blemishes, scars, etc. (Yoko Ono)  
e of Flux-shop products: games, puzzles, jokes, gags, relics, foods, drinks, drugs, sports, playing cards, furniture, films, music boxes and  
chines, postage stamps, envelopes, maps, atlases, tattoos, posters, boxes, books, clocks, etc.

VE 6-12: EXAMINATION BY JOHN & YOKO + FLUXSCHOOL

ious questions, lectures and other possible and impossible tasks submitted to participants in a classroom environment.  
orge Brecht, Robert Filliou, Bici Hendricks, Geoff Hendricks, Henry Flynt, John Lennon, George Maciunas, Yoko Ono, Ben Patterson,  
ko Shiomii, Ben Vautier, Bob Watts.)

R FURTHER INFORMATION CALL: 966 6986 OR 925 7360



The Museum of Modern Art Archives, NY	Collection:	Series.Folder:
	Silverman Fluxus Archives	I.929

FLUXFEST PRESENTATION OF JOHN LENNON & YOKO ONO + \* 1 TO 8PM, AT JOE JONES STORE, 18 N. MOORE ST. (AT CANAL  
OPENING: APR.11, 4PM. GRAPEFRUIT FLUX-BANQUET: grapefruit hors d'oeuvre, grapefruit soup, grapefruit dumplings, grapefruit  
mashed potatoes, grapefruit rice stuffing, grapefruit pancakes, grapefruit icecream, grapefruit wine, grapefruit cocktail, etc. (by Flux-chefs)

APR.11-17: DO IT YOURSELF. BY JOHN & YOKO + EVERYBODY

1. Painting to be stepped on, (Yoko Ono '61) ink pad as door mat.
2. Painting to hammer a nail (Yoko Ono '61)
3. 2 Eggs (John Lennon '70)
4. Flux-eggs (G.M.) eggs filled with paint & to be thrown against wall.
5. Draw Circle painting (Yoko Ono '64)
6. Graffiti wall
7. Kitchen Piece (Yoko Ono '60) painting to wipe hands and floor with.
8. Osmosis (G.M. '60) india ink onto puddle of water.

APR.18-24: TICKETS BY JOHN LENNON + FLUXTOURS

Selling to the public various tickets: desolate, unknown, funny 7 distant places (\$1 to \$300 [for Siberia]), Chinese theatre, sky tours, abandon  
buildings & narrow streets (10¢) (John Lennon); tickets to visit famous people (Y. Wada); 100 tickets to same seat, same day show (10¢)  
(Ben Vautier); tickets to locked up theatre (ben Vautier); outdated tickets (10¢) (G.M.). Also available will be lottery tickets to win tickets.

APR.25-MAY 1: MEASURE BY JOHN & YOKO + HI RED CLINIC + FLUXDOCTORS (by Hi Red Center unless noted otherwise)

Various measurements are taken of each visitor by white coated attendants in a clinic environment: head volume, mouth, palm, pocket  
capacity, extended tongue length, hair strength, maximum kick; by Bob Watts: shoe/foot difference, inflated cheek width, temperature inside  
shoe or pocket, weight of pocket fuzz; by G. Maciunas: forefinger punch strength, kick strength, hand grip strength (crushing egg), vision  
above forehead, saliva or tear production, vision with wrong spectacles, smell, pain sensitivity, number of hairs in nostril, weight with one foot  
off the scale, minimum sway, stomach elasticity, capacity to shrink or expand; by Brian Lane: distance to blow out candle, X-ray vision;  
by Joe Jones: electric chair to measure electric conductivity and sound sensitivity (in window); by Yoko Ono: distance from the store to  
the nearest water; by John Lennon: distance from the nearest water to the store. (\$1 ADMISSION CHARGE)

MAY 2-8: BLUE ROOM BY JOHN & YOKO + FLUXLIARS (visitors should be dressed in white)

Entire room (floor, walls, ceiling), exterior (door & window), and interior furnishings are to be white.

1. soft rubber ball with sign: This sphere will be a sharp point when it gets to the far side of the room in your mind. (Yoko Ono '64)
2. an upright needle with sign: Forget it. (Yoko Ono) another one with sign: Needle (John Lennon, 1970)
3. A cup on a table with sign: Not to be appreciated until it's broken, (Yoko Ono '66). another one with sign: Mend, (Yoko Ono '66)
4. A very large box with sign: This is not here (Yoko Ono '67)
5. window sign: This window is 2000ft wide (Yoko Ono '67), also This window is 5ft wide (John Lennon)
6. Long straight line with sign: This line is a part of a large sphere, a straight line exists only in your mind, (Yoko Ono, 1966 & 70)
7. Other interior signs: Stay until the room is blue (Yoko Ono '66); Do not disturb (John Lennon '70); Use ashtray for ashes (Yoko Ono '64)
8. Signs by George Brecht (1961): No Smoking, Exit (on blank wall), Entry (on exit), forget this, listen, location, silence (at exit), middle (at edge of room), day/night (at night/day).
9. Exterior signs: spring, rain, sky, wind, etc. (according to weather) (Yoko Ono '67)

Window display: 2 sets of 4 spoons, one set with sign: 3 spoons (Yoko Ono '67), and another with sign: 4 spoons (John Lennon, 1970)

MAY 9-15: WEIGHT & WATER BY JOHN & YOKO + FLUXFAUCET

Store floor flooded with water to about 1" height. Visitors either barefooted or provided with rubber boots with weights (Yoko + Maciunas)

Various objects floating or sunk to the floor: 1. A dry sponge (Yoko + John, 1970); 2. A wet sponge (Yoko + John, 1970)

3. Three Aqueous Events: ice, water, steam (George Brecht '60); 4. Symphony no.3: in the water (George Brecht, 1964)

5. 10 look-alike boxes of different weights, from light, floating on the surface, to heavy ones glued to the floor. (Yoko + Takako Saito)

Window display: Drip Music (George Brecht, 1959) Automatic drip with amplified sound of the drip, (realized by Joe Jones)

MAY 16-22: CAPSULE BY JOHN & YOKO + FLUX SPACE CENTER (\$1 ADMISSION CHARGE)

A 3ft cube enclosure (capsule) having various film loops projected on its 3 walls, ceiling and floor to a single viewer inside, about 8 minutes.

1. transition from small to large screens; 2. single frame exposures of Sears Catalogue pages (both by Paul Sharits, 1966)

3. transition from white to black (George Brecht, 1965) 4. linear fall; 5. linear turn (carrousel fashion) (both by G.Maciunas, 1966)

6. transition through color scale (Ayo, 1969); 7. No.4 (close up of walking nude buttock)(Yoko Ono, 1966) 8. Flicker (J. Cavanaugh, 1965)

9. clouds (Geoff Hendricks, 1970); 10. slide projection of: diffusion and osmosis of solvents (G.Maciunas, 1969)

MAY 23-29: PORTRAIT OF JOHN LENNON AS A YOUNG CLOUD BY YOKO ONO + EVERYPARTICIPANT

A 6ft x 10ft wall of 100 drawers (containing more boxes), and doors, all empty inside except one with a microscope entitled: John's smile.

Musical portrait of John Lennon (by Joe Jones) when one of the doors is opened.

MAY 23, 7PM. PORTRAIT OF MALKA SAFRO, by Henry Flynt, performed by him on violin.

MAY 30-JUNE 5: THE STORE BY JOHN & YOKO + FLUXFACTORY

Coin operated vending machines: 1. machine devouring deposited objects, 2. crying machine dispensing tears, 3. machine dispensing sky (air  
fall 3 by Yoko Ono), 4. change machine dispensing metal slugs (fake coins for a penny) (John Lennon), 5. change machine dispensing penny  
for a dime (G.M. 1951), 6. drink dispenser dispensing drink with water soluble or leaking cup (G.M.), 7. nut dispenser dispensing into palm  
loose sand or glue or an endless string (G.Maciunas), 8. Cigarette dispenser dispensing cigarettes with rope, dried fruit, sawdust & other fillin  
9. perfume dispenser dispensing various strange scents and smokes (Yoshimasa Wada), 10. rain machine (Ayo)

Sale of body accessories: halos, horns, 3rd eyes, tails, hoofs, skin blemishes, scars, etc. (Yoko Ono)

Sale of Flux-shop products: games, puzzles, jokes, gags, relics, foods, drinks, drugs, sports, playing cards, furniture, films, music boxes and  
machines, postage stamps, envelopes, maps, atlases, tattoos, posters, boxes, books, clocks, etc.

JUNE 6-12: EXAMINATION BY JOHN & YOKO + FLUXSCHOOL

Various questions, lectures and other possible and impossible tasks submitted to participants in a classroom environment.

(George Brecht, Robert Filliou, Bici Hendricks, Geoff Hendricks, Henry Flynt, John Lennon, George Maciunas, Yoko Ono, Ben Patterson,  
Mieko Shiomi, Ben Vautier, Bob Watts.)

FOR FURTHER INFORMATION CALL: 966 6986 OR 925 7360



The Museum of Modern Art Archives, NY	Collection:	Series.Folder:
	Silverman Fluxus Archives	I.929

FLUXFEST PRESENTATION OF JOHN LENNON & YOKO ONO + \* 1 TO 8PM, AT JOE JONES STORE, 18 N. MOORE ST. (AT CANAL

OPENING: APR. 11, 4PM. GRAPEFRUIT FLUX-BANQUET: grapefruit hors d'oeuvre, grapefruit soup, grapefruit dumplings, grapefruit mashed potatoes, grapefruit rice stuffing, grapefruit pancakes, grapefruit icecream, grapefruit wine, grapefruit cocktail, etc. (by Flux-chefs)

APR. 11-17: DO IT YOURSELF. BY JOHN & YOKO + EVERYBODY

1. Painting to be stepped on, (Yoko Ono '61) ink pad as door mat. 2. Painting to hammer a nail (Yoko Ono '61) 3. 2 Eggs (John Lennon '70)
4. Flux-eggs (G.M.) eggs filled with paint & to be thrown against wall. 5. Draw Circle painting (Yoko Ono '64) 6. Graffiti wall
7. Kitchen Piece (Yoko Ono '60) painting to wipe hands and floor with. 8. Osmosis (G.M. '60) india ink onto puddle of water.

APR. 18-24: TICKETS BY JOHN LENNON + FLUXTOURS

Selling to the public various tickets: desolate, unknown, funny 7 distant places (\$1 to \$300 [for Siberia]), Chinese theatre, sky tours, abandon buildings & narrow streets (10¢) (John Lennon); tickets to visit famous people (Y. Wada); 100 tickets to same seat, same day show (10¢) (Ben Vautier); tickets to locked up theatre (ben Vautier); outdated tickets (10¢) (G.M.). Also available will be lottery tickets to win tickets.

APR. 25-MAY 1: MEASURE BY JOHN & YOKO + HI RED CLINIC + FLUXDOCTORS (by Hi Red Center unless noted otherwise)

Various measurements are taken of each visitor by white coated attendants in a clinic environment: head volume, mouth, palm, pocket capacity, extended tongue length, hair strength, maximum kick; by Bob Watts: shoe/foot difference, inflated cheek width, temperature inside shoe or pocket, weight of pocket fuzz; by G. Maciunas: forefinger punch strength, kick strength, hand grip strength (crushing egg), vision above forehead, saliva or tear production, vision with wrong spectacles, smell, pain sensitivity, number of hairs in nostril, weight with one foot off the scale, minimum sway, stomach elasticity, capacity to shrink or expand; by Brian Lane: distance to blow out candle, X-ray vision; by Joe Jones: electric chair to measure electric conductivity and sound sensitivity (in window); by Yoko Ono: distance from the store to the nearest water; by John Lennon: distance from the nearest water to the store. (\$1 ADMISSION CHARGE)

MAY 2-8: BLUE ROOM BY JOHN & YOKO + FLUXLIARS (visitors should be dressed in white)

Entire room (floor, walls, ceiling), exterior (door & window), and interior furnishings are to be white.

1. soft rubber ball with sign: This sphere will be a sharp point when it gets to the far side of the room in your mind. (Yoko Ono '64)
2. an upright needle with sign: Forget it. (Yoko Ono) another one with sign: Needle (John Lennon, 1970) 3. A cup on a table with sign: Not to be appreciated until it's broken, (Yoko Ono '66). another one with sign: Mend, (Yoko Ono '66) 4. A very large box with sign: This is not here (Yoko Ono '67) 5. window sign: This window is 2000ft wide (Yoko Ono '67), also This window is 5ft wide (John Lennon)
6. Long straight line with sign: This line is a part of a large sphere, a straight line exists only in your mind, (Yoko Ono, 1966 & 70)
7. Other interior signs: Stay until the room is blue (Yoko Ono '66); Do not disturb (John Lennon '70); Use ashtray for ashes (Yoko Ono '66)
8. Signs by George Brecht (1961): No Smoking, Exit (on blank wall), Entry (on exit), forget this, listen, location, silence (at exit), middle (at edge of room), day/night (at night/day).
9. Exterior signs: spring, rain, sky, wind, etc. (according to weather) (Yoko Ono '67)
- Window display: 2 sets of 4 spoons, one set with sign: 3 spoons (Yoko Ono '67), and another with sign: 4 spoons (John Lennon, 1970)

MAY 9-15: WEIGHT & WATER BY JOHN & YOKO + FLUXFAUCET

Store floor flooded with water to about 1" height. Visitors either barefooted or provided with rubber boots with weights (Yoko + Maciunas)

Various objects floating or sunk to the floor: 1. A dry sponge (Yoko + John, 1970); 2. A wet sponge (Yoko + John, 1970)

3. Three Aqueous Events: ice, water, steam (George Brecht '60); 4. Symphony no. 3: in the water (George Brecht, 1964)

5. 10 look-alike boxes of different weights, from light, floating on the surface, to heavy ones glued to the floor. (Yoko + Takako Saito)

Window display: Drip Music (George Brecht, 1959) Automatic drip with amplified sound of the drip, (realized by Joe Jones)

MAY 16-22: CAPSULE BY JOHN & YOKO + FLUX SPACE CENTER (\$1 ADMISSION CHARGE)

A 3ft cube enclosure (capsule) having various film loops projected on its 3 walls, ceiling and floor to a single viewer inside, about 8 minutes.

1. transition from small to large screens; 2. single frame exposures of Sears Catalogue pages (both by Paul Sharits, 1966)

3. transition from white to black (George Brecht, 1965) 4. linear fall; 5. linear turn (carrousel fashion) (both by G. Maciunas, 1966)

6. transition through color scale (Ayo, 1969); 7. No. 4 (close up of walking nude buttock) (Yoko Ono, 1966) 8. Flicker (J. Cavanaugh, 1965)

9. clouds (Geoff Hendricks, 1970); 10. slide projection of: diffusion and osmosis of solvents (G. Maciunas, 1969)

MAY 23-29: PORTRAIT OF JOHN LENNON AS A YOUNG CLOUD BY YOKO ONO + EVERYPARTICIPANT

A 6ft x 10ft wall of 100 drawers (containing more boxes), and doors, all empty inside except one with a microscope entitled: John's smile.

Musical portrait of John Lennon (by Joe Jones) when one of the doors is opened.

MAY 23, 7PM. PORTRAIT OF MALKA SAFRO, by Henry Flynt, performed by him on violin.

MAY 30-JUNE 5: THE STORE BY JOHN & YOKO + FLUXFACTORY

Coin operated vending machines: 1. machine devouring deposited objects, 2. crying machine dispensing tears, 3. machine dispensing sky (air all 3 by Yoko Ono), 4. change machine dispensing metal slugs (fake coins for a penny) (John Lennon), 5. change machine dispensing penny for a dime (G.M. 1951), 6. drink dispenser dispensing drink with water soluble or leaking cup (G.M.), 7. nut dispenser dispensing into palm loose sand or glue or an endless string (G. Maciunas), 8. Cigarette dispenser dispensing cigarettes with rope, dried fruit, sawdust & other fillin

9. perfume dispenser dispensing various strange scents and smokes (Yoshimasa Wada), 10. rain machine (Ayo)

Sale of body accessories: halos, horns, 3rd eyes, tails, hoofs, skin blemishes, scars, etc. (Yoko Ono)

Sale of Flux-shop products: games, puzzles, jokes, gags, relics, foods, drinks, drugs, sports, playing cards, furniture, films, music boxes and machines, postage stamps, envelopes, maps, atlases, tattoos, posters, boxes, books, clocks, etc.

JUNE 6-12: EXAMINATION BY JOHN & YOKO + FLUXSCHOOL

Various questions, lectures and other possible and impossible tasks submitted to participants in a classroom environment.

(George Brecht, Robert Filliou, Bici Hendricks, Geoff Hendricks, Henry Flynt, John Lennon, George Maciunas, Yoko Ono, Ben Patterson, Mieko Shiomi, Ben Vautier, Bob Watts.)

FOR FURTHER INFORMATION CALL: 966 6986 OR 925 7360



The Museum of Modern Art Archives, NY	Collection:	Series.Folder:
	Silverman Fluxus Archives	I.929

FLUXFEST PRESENTATION OF JOHN LENNON & YOKO ONO + \* 1 TO 8PM, AT JOE JONES STORE, 18 N. MOORE ST. (AT CANAL

OPENING: APR. 11, 4PM. GRAPEFRUIT FLUX-BANQUET: grapefruit hors d'oeuvre, grapefruit soup, grapefruit dumplings, grapefruit  
mashed potatoes, grapefruit rice stuffing, grapefruit pancakes, grapefruit icecream, grapefruit wine, grapefruit cocktail, etc. (by Flux-chefs)

APR. 11-17: DO IT YOURSELF. BY JOHN & YOKO + EVERYBODY

1. Painting to be stepped on, (Yoko Ono '61) ink pad as door mat.
2. Painting to hammer a nail (Yoko Ono '61)
3. 2 Eggs (John Lennon '70)
4. Flux-eggs (G.M.) eggs filled with paint & to be thrown against wall.
5. Draw Circle painting (Yoko Ono '64)
6. Graffiti wall
7. Kitchen Piece (Yoko Ono '60) painting to wipe hands and floor with.
8. Osmosis (G.M. '60) india ink onto puddle of water.

APR. 18-24: TICKETS BY JOHN LENNON + FLUXTOURS

Selling to the public various tickets: desolate, unknown, funny 7 distant places (\$1 to \$300 [for Siberia]), Chinese theatre, sky tours, abandon  
buildings & narrow streets (10¢) (John Lennon); tickets to visit famous people (Y. Wada); 100 tickets to same seat, same day show (10¢)  
(Ben Vautier); tickets to locked up theatre (ben Vautier); outdated tickets (10¢) (G.M.). Also available will be lottery tickets to win tickets.

APR. 25-MAY 1: MEASURE BY JOHN & YOKO + HI RED CLINIC + FLUXDOCTORS (by Hi Red Center unless noted otherwise)

Various measurements are taken of each visitor by white coated attendants in a clinic environment: head volume, mouth, palm, pocket  
capacity, extended tongue length, hair strength, maximum kick; by Bob Watts: shoe/foot difference, inflated cheek width, temperature inside  
shoe or pocket, weight of pocket fuzz; by G. Maciunas: forefinger punch strength, kick strength, hand grip strength (crushing egg), vision  
above forehead, saliva or tear production, vision with wrong spectacles, smell, pain sensitivity, number of hairs in nostril, weight with one foot  
off the scale, minimum sway, stomach elasticity, capacity to shrink or expand; by Brian Lane: distance to blow out candle, X-ray vision;  
by Joe Jones: electric chair to measure electric conductivity and sound sensitivity (in window); by Yoko Ono: distance from the store to  
the nearest water; by John Lennon: distance from the nearest water to the store. (\$1 ADMISSION CHARGE)

MAY 2-8: BLUE ROOM BY JOHN & YOKO + FLUXLIARS (visitors should be dressed in white)

Entire room (floor, walls, ceiling), exterior (door & window), and interior furnishings are to be white.

1. soft rubber ball with sign: This sphere will be a sharp point when it gets to the far side of the room in your mind. (Yoko Ono '64)
2. an upright needle with sign: Forget it. (Yoko Ono) another one with sign: Needle (John Lennon, 1970)
3. A cup on a table with sign:  
Not to be appreciated until it's broken, (Yoko Ono '66). another one with sign: Mend, (Yoko Ono '66)
4. A very large box with sign:  
This is not here (Yoko Ono '67)
5. window sign: This window is 2000ft wide (Yoko Ono '67), also This window is 5ft wide (John Lennon)
6. Long straight line with sign: This line is a part of a large sphere, a straight line exists only in your mind, (Yoko Ono, 1966 & 70)
7. Other interior signs: Stay until the room is blue (Yoko Ono '66); Do not disturb (John Lennon '70); Use ashtray for ashes (Yoko Ono '66)
8. Signs by George Brecht (1961): No Smoking, Exit (on blank wall), Entry (on exit), forget this, listen, location, silence (at exit),  
middle (at edge of room), day/night (at night/day).
9. Exterior signs: spring, rain, sky, wind, etc. (according to weather) (Yoko Ono '67)

Window display: 2 sets of 4 spoons, one set with sign: 3 spoons (Yoko Ono '67), and another with sign: 4 spoons (John Lennon, 1970)

MAY 9-15: WEIGHT & WATER BY JOHN & YOKO + FLUXFAUCET

Store floor flooded with water to about 1" height. Visitors either barefooted or provided with rubber boots with weights (Yoko + Maciunas)

Various objects floating or sunk to the floor: 1. A dry sponge (Yoko + John, 1970); 2. A wet sponge (Yoko + John, 1970)

3. Three Aqueous Events: ice, water, steam (George Brecht '60); 4. Symphony no. 3: in the water (George Brecht, 1964)

5. 10 look-alike boxes of different weights, from light, floating on the surface, to heavy ones glued to the floor. (Yoko + Takako Saito)

Window display: Drip Music (George Brecht, 1959) Automatic drip with amplified sound of the drip, (realized by Joe Jones)

MAY 16-22: CAPSULE BY JOHN & YOKO + FLUX SPACE CENTER (\$1 ADMISSION CHARGE)

A 3ft cube enclosure (capsule) having various film loops projected on its 3 walls, ceiling and floor to a single viewer inside, about 8 minutes.

1. transition from small to large screens;
2. single frame exposures of Sears Catalogue pages (both by Paul Sharits, 1966)
3. transition from white to black (George Brecht, 1965)
4. linear fall;
5. linear turn (carousel fashion) (both by G. Maciunas, 1966)
6. transition through color scale (Ayo, 1969);
7. No. 4 (close up of walking nude buttock) (Yoko Ono, 1966)
8. Flicker (J. Cavanaugh, 1965)
9. clouds (Geoff Hendricks, 1970);
10. slide projection of: diffusion and osmosis of solvents (G. Maciunas, 1969)

MAY 23-29: PORTRAIT OF JOHN LENNON AS A YOUNG CLOUD BY YOKO ONO + EVERY PARTICIPANT

A 6ft x 10ft wall of 100 drawers (containing more boxes), and doors, all empty inside except one with a microscope entitled: John's smile.

Musical portrait of John Lennon (by Joe Jones) when one of the doors is opened.

MAY 23, 7PM. PORTRAIT OF MALKA SAFRO, by Henry Flynt, performed by him on violin.

MAY 30-JUNE 5: THE STORE BY JOHN & YOKO + FLUXFACTORY

Coin operated vending machines: 1. machine devouring deposited objects, 2. crying machine dispensing tears, 3. machine dispensing sky (air  
all 3 by Yoko Ono), 4. change machine dispensing metal slugs (fake coins for a penny) (John Lennon), 5. change machine dispensing pen  
for a dime (G.M. 1951), 6. drink dispenser dispensing drink with water soluble or leaking cup (G.M.), 7. nut dispenser dispensing into palm  
loose sand or glue or an endless string (G. Maciunas), 8. Cigarette dispenser dispensing cigarettes with rope, dried fruit, sawdust & other fillin  
9. perfume dispenser dispensing various strange scents and smokes (Yoshimasa Wada), 10. rain machine (Ayo)

Sale of body accessories: halos, horns, 3rd eyes, tails, hoofs, skin blemishes, scars, etc. (Yoko Ono)

Sale of Flux-shop products: games, puzzles, jokes, gags, relics, foods, drinks, drugs, sports, playing cards, furniture, films, music boxes and  
machines, postage stamps, envelopes, maps, atlases, tattoos, posters, boxes, books, clocks, etc.

JUNE 6-12: EXAMINATION BY JOHN & YOKO + FLUXSCHOOL

Various questions, lectures and other possible and impossible tasks submitted to participants in a classroom environment.

(George Brecht, Robert Filliou, Bici Hendricks, Geoff Hendricks, Henry Flynt, John Lennon, George Maciunas, Yoko Ono, Ben Patterson,  
Mieko Shiomi, Ben Vautier, Bob Watts.)

FOR FURTHER INFORMATION CALL: 966 6986 OR 925 7360



The Museum of Modern Art Archives, NY	Collection:	Series.Folder:
	Silverman Fluxus Archives	I.929

FLUXFEST PRESENTATION OF JOHN LENNON & YOKO ONO + \* 1 TO 8PM, AT JOE JONES STORE, 18 N. MOORE ST. (AT CANAL  
OPENING: APR. 11, 4PM. GRAPEFRUIT FLUX-BANQUET: grapefruit hors d'oeuvre, grapefruit soup, grapefruit dumplings, grapefruit  
mashed potatoes, grapefruit rice stuffing, grapefruit pancakes, grapefruit icecream, grapefruit wine, grapefruit cocktail, etc. (by Flux-chefs)

APR. 11-17: DO IT YOURSELF. BY JOHN & YOKO + EVERYBODY

1. Painting to be stepped on, (Yoko Ono '67) ink pad as door mat. 2. Painting to hammer a nail (Yoko Ono '67) 3. 2 Eggs (John Lennon '70)
4. Flux-eggs (G.M.) eggs filled with paint & to be thrown against wall. 5. Draw Circle painting (Yoko Ono '64) 6. Graffiti wall
7. Kitchen Piece (Yoko Ono '60) painting to wipe hands and floor with. 8. Osmosis (G.M. '60) india ink onto puddle of water.

APR. 18-24: TICKETS BY JOHN LENNON + FLUXTOURS

Selling to the public various tickets: desolate, unknown, funny 7 distant places (\$1 to \$300 [for Siberia]), Chinese theatre, sky tours, abandon  
buildings & narrow streets (10¢) (John Lennon); tickets to visit famous people (Y. Wada); 100 tickets to same seat, same day show (10¢)  
(Ben Vautier); tickets to locked up theatre (ben Vautier); outdated tickets (10¢) (G.M.). Also available will be lottery tickets to win tickets.

APR. 25-MAY 1: MEASURE BY JOHN & YOKO + HI RED CLINIC + FLUXDOCTORS (by Hi Red Center unless noted otherwise)

Various measurements are taken of each visitor by white coated attendants in a clinic environment: head volume, mouth, palm, pocket  
capacity, extended tongue length, hair strength, maximum kick; by Bob Watts: shoe/foot difference, inflated cheek width, temperature inside  
shoe or pocket, weight of pocket fuzz; by G. Maciunas: forefinger punch strength, kick strength, hand grip strength (crushing egg), vision  
above forehead, saliva or tear production, vision with wrong spectacles, smell, pain sensitivity, number of hairs in nostril, weight with one foot  
off the scale, minimum sway, stomach elasticity, capacity to shrink or expand; by Brian Lane: distance to blow out candle, X-ray vision;  
by Joe Jones: electric chair to measure electric conductivity and sound sensitivity (in window); by Yoko Ono: distance from the store to  
the nearest water; by John Lennon: distance from the nearest water to the store. (\$1 ADMISSION CHARGE)

MAY 2-8: BLUE ROOM BY JOHN & YOKO + FLUXLIARS (visitors should be dressed in white)

- Entire room (floor, walls, ceiling), exterior (door & window), and interior furnishings are to be white.
1. soft rubber ball with sign: *This sphere will be a sharp point when it gets to the far side of the room in your mind.* (Yoko Ono '64)
  2. an upright needle with sign: *Forget it.* (Yoko Ono) another one with sign: *Needle* (John Lennon, 1970) 3. A cup on a table with sign:  
*Not to be appreciated until it's broken,* (Yoko Ono '66). another one with sign: *Mend,* (Yoko Ono '66) 4. A very large box with sign:  
*This is not here* (Yoko Ono '67) 5. window sign: *This window is 2000ft wide* (Yoko Ono '67), also *This window is 5ft wide* (John Lennon '64)
  6. Long straight line with sign: *This line is a part of a large sphere, a straight line exists only in your mind,* (Yoko Ono, 1966 & 70)
  7. Other interior signs: *Stay until the room is blue* (Yoko Ono '66); *Do not disturb* (John Lennon '70); *Use ashtray for ashes* (Yoko Ono '64)
  8. Signs by George Brecht (1961): *No Smoking, Exit* (on blank wall), *Entry* (on exit), *forget this, listen, location, silence* (at exit),  
*middle* (at edge of room), *day/night* (at night/day). 9. Exterior signs: *spring, rain, sky, wind, etc. (according to weather)* (Yoko Ono '67)
  - Window display: 2 sets of 4 spoons, one set with sign: *3 spoons* (Yoko Ono '67), and another with sign: *4 spoons* (John Lennon, 1970)

MAY 9-15: WEIGHT & WATER BY JOHN & YOKO + FLUXFAUCET

Store floor flooded with water to about 1" height. Visitors either barefooted or provided with rubber boots with weights (Yoko + Maciunas)  
Various objects floating or sunk to the floor: 1. *A dry sponge* (Yoko + John, 1970); 2. *A wet sponge* (Yoko + John, 1970)  
3. *Three Aqueous Events: ice, water, steam* (George Brecht '60); 4. *Symphony no. 3: in the water* (George Brecht, 1964)  
5. 10 look-alike boxes of different weights, from light, floating on the surface, to heavy ones glued to the floor. (Yoko + Takako Saito)  
Window display: *Drip Music* (George Brecht, 1959) Automatic drip with amplified sound of the drip, (realized by Joe Jones)

MAY 16-22: CAPSULE BY JOHN & YOKO + FLUX SPACE CENTER (\$1 ADMISSION CHARGE)

- A 3ft cube enclosure (capsule) having various film loops projected on its 3 walls, ceiling and floor to a single viewer inside, about 8 minutes.
1. transition from small to large screens; 2. single frame exposures of Sears Catalogue pages (both by Paul Sharits, 1966)
  3. transition from white to black (George Brecht, 1965) 4. linear fall; 5. linear turn (carousel fashion) (both by G. Maciunas, 1966)
  6. transition through color scale (Ayo, 1969); 7. No. 4 (close up of walking nude buttock) (Yoko Ono, 1966) 8. Flicker (J. Cavanaugh, 1965)
  9. clouds (Geoff Hendricks, 1970); 10. slide projection of: diffusion and osmosis of solvents (G. Maciunas, 1969)

MAY 23-29: PORTRAIT OF JOHN LENNON AS A YOUNG CLOUD BY YOKO ONO + EVERYPARTICIPANT

A 6ft x 10ft wall of 100 drawers (containing more boxes), and doors, all empty inside except one with a microscope entitled: *John's smile.*  
*Musical portrait of John Lennon* (by Joe Jones) when one of the doors is opened.

MAY 23, 7PM. PORTRAIT OF MALKA SAFRO, by Henry Flynt, performed by him on violin.

MAY 30-JUNE 5: THE STORE BY JOHN & YOKO + FLUXFACTORY

Coin operated vending machines: 1. machine devouring deposited objects, 2. crying machine dispensing tears, 3. machine dispensing sky (air  
fall 3 by Yoko Ono), 4. change machine dispensing metal slugs (fake coins for a penny) (John Lennon), 5. change machine dispensing penny  
for a dime (G.M. 1951), 6. drink dispenser dispensing drink with water soluble or leaking cup (G.M.), 7. nut dispenser dispensing into palm  
loose sand or glue or an endless string (G. Maciunas), 8. Cigarette dispenser dispensing cigarettes with rope, dried fruit, sawdust & other fillin  
9. perfume dispenser dispensing various strange scents and smokes (Yoshimasa Wada), 10. rain machine (Ayo)  
Sale of body accessories: halos, horns, 3rd eyes, tails, hoofs, skin blemishes, scars, etc. (Yoko Ono)  
Sale of Flux-shop products: games, puzzles, jokes, gags, relics, foods, drinks, drugs, sports, playing cards, furniture, films, music boxes and  
machines, postage stamps, envelopes, maps, atlases, tattoos, posters, boxes, books, clocks, etc.

JUNE 6-12: EXAMINATION BY JOHN & YOKO + FLUXSCHOOL

Various questions, lectures and other possible and impossible tasks submitted to participants in a classroom environment.  
(George Brecht, Robert Filliou, Bici Hendricks, Geoff Hendricks, Henry Flynt, John Lennon, George Maciunas, Yoko Ono, Ben Patterson,  
Mieko Shiomi, Ben Vautier, Bob Watts.)

FOR FURTHER INFORMATION CALL: 966 6986 OR 925 7360



The Museum of Modern Art Archives, NY	Collection:	Series.Folder:
	Silverman Fluxus Archives	I.929

FLUXFEST PRESENTATION OF JOHN LENNON & YOKO ONO + \* 1 TO 8PM, AT JOE JONES STORE, 18 N. MOORE ST. (AT CANAL  
OPENING: APR. 11, 4PM. GRAPEFRUIT FLUX-BANQUET: grapefruit hors d'oeuvre, grapefruit soup, grapefruit dumplings, grapefruit  
mashed potatoes, grapefruit rice stuffing, grapefruit pancakes, grapefruit icecream, grapefruit wine, grapefruit cocktail, etc. (by Flux-chefs)

APR. 11-17: DO IT YOURSELF. BY JOHN & YOKO + EVERYBODY

1. Painting to be stepped on, (Yoko Ono '61) ink pad as door mat.
2. Painting to hammer a nail (Yoko Ono '61)
3. 2 Eggs (John Lennon '70)
4. Flux-eggs (G.M.) eggs filled with paint & to be thrown against wall.
5. Draw Circle painting (Yoko Ono '64)
6. Graffiti wall
7. Kitchen Piece (Yoko Ono '60) painting to wipe hands and floor with.
8. Osmosis (G.M. '60) india ink onto puddle of water.

APR. 18-24: TICKETS BY JOHN LENNON + FLUXTOURS

Selling to the public various tickets: desolate, unknown, funny 7 distant places (\$1 to \$300 [for Siberia]), Chinese theatre, sky tours, abandon  
buildings & narrow streets (10¢) (John Lennon); tickets to visit famous people (Y. Wada); 100 tickets to same seat, same day show (10¢)  
(Ben Vautier); tickets to locked up theatre (ben Vautier); outdated tickets (10¢) (G.M.). Also available will be lottery tickets to win tickets.

APR. 25-MAY 1: MEASURE BY JOHN & YOKO + HI RED CLINIC + FLUXDOCTORS (by Hi Red Center unless noted otherwise)

Various measurements are taken of each visitor by white coated attendants in a clinic environment: head volume, mouth, palm, pocket  
capacity, extended tongue length, hair strength, maximum kick; by Bob Watts: shoe/foot difference, inflated cheek width, temperature inside  
shoe or pocket, weight of pocket fuzz; by G. Maciunas: forefinger punch strength, kick strength, hand grip strength (crushing egg), vision  
above forehead, saliva or tear production, vision with wrong spectacles, smell, pain sensitivity, number of hairs in nostril, weight with one foot  
off the scale, minimum sway, stomach elasticity, capacity to shrink or expand; by Brian Lane: distance to blow out candle, X-ray vision;  
by Joe Jones: electric chair to measure electric conductivity and sound sensitivity (in window); by Yoko Ono: distance from the store to  
the nearest water; by John Lennon: distance from the nearest water to the store. (\$1 ADMISSION CHARGE)

MAY 2-8: BLUE ROOM BY JOHN & YOKO + FLUXLIARS (visitors should be dressed in white)

Entire room (floor, walls, ceiling), exterior (door & window), and interior furnishings are to be white.  
1. soft rubber ball with sign: This sphere will be a sharp point when it gets to the far side of the room in your mind. (Yoko Ono '64)  
2. an upright needle with sign: Forget it. (Yoko Ono) another one with sign: Needle (John Lennon, 1970) 3. A cup on a table with sign:  
Not to be appreciated until it's broken, (Yoko Ono '66). another one with sign: Mend, (Yoko Ono '66) 4. A very large box with sign:  
This is not here (Yoko Ono '67) 5. window sign: This window is 2000ft wide (Yoko Ono '67), also This window is 5ft wide (John Lennon '67)  
6. Long straight line with sign: This line is a part of a large sphere, a straight line exists only in your mind, (Yoko Ono, 1966 & 70)  
7. Other interior signs: Stay until the room is blue (Yoko Ono '66); Do not disturb (John Lennon '70); Use ashtray for ashes (Yoko Ono '66)  
8. Signs by George Brecht (1961): No Smoking, Exit (on blank wall), Entry (on exit), forget this, listen, location, silence (at exit),  
middle (at edge of room), day/night (at night/day). 9. Exterior signs: spring, rain, sky, wind, etc. (according to weather) (Yoko Ono '67)  
Window display: 2 sets of 4 spoons, one set with sign: 3 spoons (Yoko Ono '67), and another with sign: 4 spoons (John Lennon, 1970)

MAY 9-15: WEIGHT & WATER BY JOHN & YOKO + FLUXFAUCET

Store floor flooded with water to about 1" height. Visitors either barefooted or provided with rubber boots with weights (Yoko + Maciunas)

Various objects floating or sunk to the floor: 1. A dry sponge (Yoko + John, 1970); 2. A wet sponge (Yoko + John, 1970)  
3. Three Aqueous Events: ice, water, steam (George Brecht '60); 4. Symphony no. 3: in the water (George Brecht, 1964)  
5. 10 look-alike boxes of different weights, from light, floating on the surface, to heavy ones glued to the floor. (Yoko + Takako Saito)  
Window display: Drip Music (George Brecht, 1959) Automatic drip with amplified sound of the drip, (realized by Joe Jones)

MAY 16-22: CAPSULE BY JOHN & YOKO + FLUX SPACE CENTER (\$1 ADMISSION CHARGE)

A 3ft cube enclosure (capsule) having various film loops projected on its 3 walls, ceiling and floor to a single viewer inside, about 8 minutes.  
1. transition from small to large screens; 2. single frame exposures of Sears Catalogue pages (both by Paul Sharits, 1966)  
3. transition from white to black (George Brecht, 1965) 4. linear fall; 5. linear turn (carrousel fashion) (both by G. Maciunas, 1966)  
6. transition through color scale (Ayo, 1969); 7. No. 4 (close up of walking nude buttock) (Yoko Ono, 1966) 8. Flicker (J. Cavanaugh, 1965)  
9. clouds (Geoff Hendricks, 1970); 10. slide projection of: diffusion and osmosis of solvents (G. Maciunas, 1969)

MAY 23-29: PORTRAIT OF JOHN LENNON AS A YOUNG CLOUD BY YOKO ONO + EVERYPARTICIPANT

A 6ft x 10ft wall of 100 drawers (containing more boxes), and doors, all empty inside except one with a microscope entitled: John's smile.  
Musical portrait of John Lennon (by Joe Jones) when one of the doors is opened.

MAY 23, 7PM. PORTRAIT OF MALKA SAFRO, by Henry Flynt, performed by him on violin.

MAY 30-JUNE 5: THE STORE BY JOHN & YOKO + FLUXFACTORY

Coin operated vending machines: 1. machine devouring deposited objects, 2. crying machine dispensing tears, 3. machine dispensing sky (air  
[all 3 by Yoko Ono]), 4. change machine dispensing metal slugs (fake coins for a penny) (John Lennon), 5. change machine dispensing pen  
for a dime (G.M. 1951), 6. drink dispenser dispensing drink with water soluble or leaking cup (G.M.), 7. nut dispenser dispensing into palm  
loose sand or glue or an endless string (G. Maciunas), 8. Cigarette dispenser dispensing cigarettes with rope, dried fruit, sawdust & other fillin  
9. perfume dispenser dispensing various strange scents and smokes (Yoshimasa Wada), 10. rain machine (Ayo)  
Sale of body accessories: halos, horns, 3rd eyes, tails, hoofs, skin blemishes, scars, etc. (Yoko Ono)  
Sale of Flux-shop products: games, puzzles, jokes, gags, relics, foods, drinks, drugs, sports, playing cards, furniture, films, music boxes and  
machines, postage stamps, envelopes, maps, atlases, tattoos, posters, boxes, books, clocks, etc.

JUNE 6-12: EXAMINATION BY JOHN & YOKO + FLUXSCHOOL

Various questions, lectures and other possible and impossible tasks submitted to participants in a classroom environment.  
(George Brecht, Robert Filliou, Bici Hendricks, Geoff Hendricks, Henry Flynt, John Lennon, George Maciunas, Yoko Ono, Ben Patterson,  
Mieko Shiomi, Ben Vautier, Bob Watts.)

FOR FURTHER INFORMATION CALL: 966 6986 OR 925 7360



The Museum of Modern Art Archives, NY	Collection:	Series.Folder:
	Silverman Fluxus Archives	I.929

FLUXFEST PRESENTATION OF JOHN LENNON & YOKO ONO + \* 1 TO 8PM, AT JOE JONES STORE, 18 N. MOORE ST. (AT CANAL  
OPENING: APR. 11, 4PM. GRAPEFRUIT FLUX-BANQUET: grapefruit hors d'oeuvre, grapefruit soup, grapefruit dumplings, grapefruit  
mashed potatoes, grapefruit rice stuffing, grapefruit pancakes, grapefruit icecream, grapefruit wine, grapefruit cocktail, etc. (by Flux-chefs)

APR. 11-17: DO IT YOURSELF. BY JOHN & YOKO + EVERYBODY

1. Painting to be stepped on, (Yoko Ono '61) ink pad as door mat.
2. Painting to hammer a nail (Yoko Ono '61)
3. 2 Eggs (John Lennon '70)
4. Flux-eggs (G.M.) eggs filled with paint & to be thrown against wall.
5. Draw Circle painting (Yoko Ono '64)
6. Graffiti wall
7. Kitchen Piece (Yoko Ono '60) painting to wipe hands and floor with.
8. Osmosis (G.M. '60) india ink onto puddle of water.

APR. 18-24: TICKETS BY JOHN LENNON + FLUXTOURS

Selling to the public various tickets: *desolate, unknown, funny 7 distant places (\$1 to \$300 [for Siberia]), Chinese theatre, sky tours, abandon buildings & narrow streets (10¢) (John Lennon); tickets to visit famous people (Y. Wada); 100 tickets to same seat, same day show (10¢) (Ben Vautier); tickets to locked up theatre (ben Vautier); outdated tickets (10¢) (G.M.).* Also available will be lottery tickets to win tickets.

APR. 25-MAY 1: MEASURE BY JOHN & YOKO + HI RED CLINIC + FLUXDOCTORS (by Hi Red Center unless noted otherwise)

Various measurements are taken of each visitor by white coated attendants in a clinic environment: *head volume, mouth, palm, pocket capacity, extended tongue length, hair strength, maximum kick;* by Bob Watts: *shoe/foot difference, inflated cheek width, temperature inside shoe or pocket, weight of pocket fuzz;* by G. Maciunas: *forefinger punch strength, kick strength, hand grip strength (crushing egg), vision above forehead, saliva or tear production, vision with wrong spectacles, smell, pain sensitivity, number of hairs in nostril, weight with one foot off the scale, minimum sway, stomach elasticity, capacity to shrink or expand;* by Brian Lane: *distance to blow out candle, X-ray vision;* by Joe Jones: *electric chair to measure electric conductivity and sound sensitivity (in window);* by Yoko Ono: *distance from the store to the nearest water;* by John Lennon: *distance from the nearest water to the store.* (\$1 ADMISSION CHARGE)

MAY 2-8: BLUE ROOM BY JOHN & YOKO + FLUXLIARS (visitors should be dressed in white)

Entire room (floor, walls, ceiling), exterior (door & window), and interior furnishings are to be white.

1. soft rubber ball with sign: *This sphere will be a sharp point when it gets to the far side of the room in your mind.* (Yoko Ono '64)
2. an upright needle with sign: *Forget it.* (Yoko Ono) another one with sign: *Needle* (John Lennon, 1970)
3. A cup on a table with sign: *Not to be appreciated until it's broken.* (Yoko Ono '66)
4. A very large box with sign: *This is not here* (Yoko Ono '67)
5. window sign: *This window is 2000ft wide* (Yoko Ono '67), also *This window is 5ft wide* (John Lennon '67)
6. Long straight line with sign: *This line is a part of a large sphere, a straight line exists only in your mind.* (Yoko Ono, 1966 & 70)
7. Other interior signs: *Stay until the room is blue* (Yoko Ono '66); *Do not disturb* (John Lennon '70); *Use ashtray for ashes* (Yoko Ono '66)
8. Signs by George Brecht (1961): *No Smoking, Exit (on blank wall), Entry (on exit), forget this, listen, location, silence (at exit), middle (at edge of room), day/night (at night/day).*
9. Exterior signs: *spring, rain, sky, wind, etc. (according to weather)* (Yoko Ono '67)
- Window display: 2 sets of 4 spoons, one set with sign: *3 spoons* (Yoko Ono '67), and another with sign: *4 spoons* (John Lennon, 1970)

MAY 9-15: WEIGHT & WATER BY JOHN & YOKO + FLUXFAUCET

Store floor flooded with water to about 1" height. Visitors either barefooted or provided with rubber boots with weights (Yoko + Maciunas)

1. A dry sponge (Yoko + John, 1970);
2. A wet sponge (Yoko + John, 1970)
3. Three Aqueous Events: *ice, water, steam* (George Brecht '60);
4. *Symphony no. 3: in the water* (George Brecht, 1964)
5. 10 look-alike boxes of different weights, from light, floating on the surface, to heavy ones glued to the floor. (Yoko + Takako Saito)
- Window display: *Drip Music* (George Brecht, 1959) Automatic drip with amplified sound of the drip, (realized by Joe Jones)

MAY 16-22: CAPSULE BY JOHN & YOKO + FLUX SPACE CENTER (\$1 ADMISSION CHARGE)

A 3ft cube enclosure (capsule) having various film loops projected on its 3 walls, ceiling and floor to a single viewer inside, about 8 minutes.

1. transition from small to large screens;
2. single frame exposures of Sears Catalogue pages (both by Paul Sharits, 1966)
3. transition from white to black (George Brecht, 1965)
4. linear fall;
5. linear turn (carrousel fashion) (both by G. Maciunas, 1966)
6. transition through color scale (Ayo, 1969);
7. No. 4 (close up of walking nude buttock) (Yoko Ono, 1966)
8. Flicker (J. Cavanaugh, 1965)
9. clouds (Geoff Hendricks, 1970);
10. slide projection of: *diffusion and osmosis of solvents* (G. Maciunas, 1969)

MAY 23-29: PORTRAIT OF JOHN LENNON AS A YOUNG CLOUD BY YOKO ONO + EVERYPARTICIPANT

A 6ft x 10ft wall of 100 drawers (containing more boxes), and doors, all empty inside except one with a microscope entitled: *John's smile.* Musical portrait of John Lennon (by Joe Jones) when one of the doors is opened.

MAY 23, 7PM. PORTRAIT OF MALKA SAFRO, by Henry Flynt, performed by him on violin.

MAY 30-JUNE 5: THE STORE BY JOHN & YOKO + FLUXFACTORY

Coin operated vending machines: 1. machine devouring deposited objects, 2. crying machine dispensing tears, 3. machine dispensing sky (air all 3 by Yoko Ono), 4. change machine dispensing metal slugs (fake coins for a penny) (John Lennon), 5. change machine dispensing pen for a dime (G.M. 1951), 6. drink dispenser dispensing drink with water soluble or leaking cup (G.M.), 7. nut dispenser dispensing into palm loose sand or glue or an endless string (G. Maciunas), 8. Cigarette dispenser dispensing cigarettes with rope, dried fruit, sawdust & other fillin 9. perfume dispenser dispensing various strange scents and smokes (Yoshimasa Wada), 10. rain machine (Ayo)

Sale of body accessories: *halos, horns, 3rd eyes, tails, hoofs, skin blemishes, scars, etc.* (Yoko Ono)

Sale of Flux-shop products: *games, puzzles, jokes, gags, relics, foods, drinks, drugs, sports, playing cards, furniture, films, music boxes and machines, postage stamps, envelopes, maps, atlases, tattoos, posters, boxes, books, clocks, etc.*

JUNE 6-12: EXAMINATION BY JOHN & YOKO + FLUXSCHOOL

Various questions, lectures and other possible and impossible tasks submitted to participants in a classroom environment. (George Brecht, Robert Filliou, Bici Hendricks, Geoff Hendricks, Henry Flynt, John Lennon, George Maciunas, Yoko Ono, Ben Patterson, Mieko Shiomi, Ben Vautier, Bob Watts.)

FOR FURTHER INFORMATION CALL: 966 6986 OR 925 7360



The Museum of Modern Art Archives, NY	Collection:	Series.Folder:
	Silverman Fluxus Archives	I.929

FLUXFEST PRESENTATION OF JOHN LENNON & YOKO ONO + \* 1 TO 8PM, AT JOE JONES STORE, 18 N. MOORE ST. (AT CANAL  
OPENING: APR. 11, 4PM. GRAPEFRUIT FLUX-BANQUET: *grapefruit hors d'oeuvre, grapefruit soup, grapefruit dumplings, grapefruit  
mashed potatoes, grapefruit rice stuffing, grapefruit pancakes, grapefruit icecream, grapefruit wine, grapefruit cocktail, etc. (by Flux-chefs)*

APR. 11-17: DO IT YOURSELF. BY JOHN & YOKO + EVERYBODY

1. *Painting to be stepped on, (Yoko Ono '61)* ink pad as door mat.
2. *Painting to hammer a nail (Yoko Ono '61)*
3. *Eggs (John Lennon '70)*
4. *Flux-eggs (G.M.)* eggs filled with paint & to be thrown against wall.
5. *Draw Circle painting (Yoko Ono '64)*
6. *Graffiti wall*
7. *Kitchen Piece (Yoko Ono '60)* painting to wipe hands and floor with.
8. *Osmosis (G.M. '60)* india ink onto puddle of water.

APR. 18-24: TICKETS BY JOHN LENNON + FLUXTOURS

Selling to the public various tickets: *desolate, unknown, funny 7 distant places (\$1 to \$300 (for Siberia)), Chinese theatre, sky tours, abandon  
buildings & narrow streets (10¢) (John Lennon); tickets to visit famous people (Y. Wada); 100 tickets to same seat, same day show (10¢)  
(Ben Vautier); tickets to locked up theatre (ben Vautier); outdated tickets (10¢) (G.M.).* Also available will be lottery tickets to win tickets.

APR. 25-MAY 1: MEASURE BY JOHN & YOKO + HI RED CLINIC + FLUXDOCTORS (by Hi Red Center unless noted otherwise)

Various measurements are taken of each visitor by white coated attendants in a clinic environment: *head volume, mouth, palm, pocket  
capacity, extended tongue length, hair strength, maximum kick;* by Bob Watts: *shoe/foot difference, inflated cheek width, temperature inside  
shoe or pocket, weight of pocket fuzz;* by G. Maciunas: *forefinger punch strength, kick strength, hand grip strength (crushing egg), vision  
above forehead, saliva or tear production, vision with wrong spectacles, smell, pain sensitivity, number of hairs in nostril, weight with one foot  
off the scale, minimum sway, stomach elasticity, capacity to shrink or expand;* by Brian Lane: *distance to blow out candle, X-ray vision;*  
by Joe Jones: *electric chair to measure electric conductivity and sound sensitivity (in window);* by Yoko Ono: *distance from the store to  
the nearest water;* by John Lennon: *distance from the nearest water to the store. (\$! ADMISSION CHARGE)*

MAY 2-8: BLUE ROOM BY JOHN & YOKO + FLUXLIARS (visitors should be dressed in white)

Entire room (floor, walls, ceiling), exterior (door & window), and interior furnishings are to be white.  
1. soft rubber ball with sign: *This sphere will be a sharp point when it gets to the far side of the room in your mind. (Yoko Ono '64)*  
2. an upright needle with sign: *Forget it. (Yoko Ono)* another one with sign: *Needle (John Lennon, 1970)* 3. A cup on a table with sign:  
*Not to be appreciated until it's broken, (Yoko Ono '66).* another one with sign: *Mend, (Yoko Ono '66)* 4. A very large box with sign:  
*This is not here (Yoko Ono '67)* 5. window sign: *This window is 2000ft wide (Yoko Ono '67), also This window is 5ft wide (John Lennon '67)*  
6. Long straight line with sign: *This line is a part of a large sphere, a straight line exists only in your mind, (Yoko Ono, 1966 & 70)*  
7. Other interior signs: *Stay until the room is blue (Yoko Ono '66); Do not disturb (John Lennon '70); Use ashtray for ashes (Yoko Ono '66)*  
8. Signs by George Brecht (1961): *No Smoking, Exit (on blank wall), Entry (on exit), forget this, listen, location, silence (at exit),  
middle (at edge of room), day/night (at night/day).* 9. Exterior signs: *spring, rain, sky, wind, etc. (according to weather) (Yoko Ono '67)*  
Window display: 2 sets of 4 spoons, one set with sign: *3 spoons (Yoko Ono '67),* and another with sign: *4 spoons (John Lennon, 1970)*

MAY 9-15: WEIGHT & WATER BY JOHN & YOKO + FLUXFAUCET

Store floor flooded with water to about 1" height. Visitors either barefooted or provided with rubber boots with weights (Yoko + Maciunas)  
Various objects floating or sunk to the floor: 1. *A dry sponge (Yoko + John, 1970);* 2. *A wet sponge (Yoko + John, 1970)*  
3. *Three Aqueous Events: ice, water, steam (George Brecht '60);* 4. *Symphony no. 3: in the water (George Brecht, 1964)*  
5. 10 look-alike boxes of different weights, from light, floating on the surface, to heavy ones glued to the floor. (Yoko + Takako Saito)  
Window display: *Drip Music (George Brecht, 1959)* Automatic drip with amplified sound of the drip, (realized by Joe Jones)

MAY 16-22: CAPSULE BY JOHN & YOKO + FLUX SPACE CENTER (\$1 ADMISSION CHARGE)

A 3ft cube enclosure (capsule) having various film loops projected on its 3 walls, ceiling and floor to a single viewer inside, about 8 minutes.  
1. *transition from small to large screens;* 2. *single frame exposures of Sears Catalogue pages (both by Paul Sharits, 1966)*  
3. *transition from white to black (George Brecht, 1965)* 4. *linear fall;* 5. *linear turn (carrousel fashion) (both by G. Maciunas, 1966)*  
6. *transition through color scale (Ayo, 1969);* 7. *No. 4 (close up of walking nude buttock) (Yoko Ono, 1966)* 8. *Flicker (J. Cavanaugh, 1965)*  
9. *clouds (Geoff Hendricks, 1970);* 10. *slide projection of: diffusion and osmosis of solvents (G. Maciunas, 1969)*

MAY 23-29: PORTRAIT OF JOHN LENNON AS A YOUNG CLOUD BY YOKO ONO + EVERYPARTICIPANT

A 6ft x 10ft wall of 100 drawers (containing more boxes), and doors, all empty inside except one with a microscope entitled: *John's smile.*  
*Musical portrait of John Lennon (by Joe Jones)* when one of the doors is opened.

MAY 23, 7PM. PORTRAIT OF MALKA SAFRO, by Henry Flynt, performed by him on violin.

MAY 30-JUNE 5: THE STORE BY JOHN & YOKO + FLUXFACTORY

Coin operated vending machines: 1. *machine devouring deposited objects,* 2. *crying machine dispensing tears,* 3. *machine dispensing sky (air  
all 3 by Yoko Ono),* 4. *change machine dispensing metal slugs (fake coins for a penny) (John Lennon),* 5. *change machine dispensing peni  
for a dime (G.M. 1951),* 6. *drink dispenser dispensing drink with water soluble or leaking cup (G.M.),* 7. *nut dispenser dispensing into palm  
loose sand or glue or an endless string (G. Maciunas),* 8. *Cigarette dispenser dispensing cigarettes with rope, dried fruit, sawdust & other fillin*  
9. *perfume dispenser dispensing various strange scents and smokes (Yoshimasa Wada),* 10. *rain machine (Ayo)*  
Sale of body accessories: *halos, horns, 3rd eyes, tails, hoofs, skin blemishes, scars, etc. (Yoko Ono)*  
Sale of Flux-shop products: *games, puzzles, jokes, gags, relics, foods, drinks, drugs, sports, playing cards, furniture, films, music boxes and  
machines, postage stamps, envelopes, maps, atlases, tattoos, posters, boxes, books, clocks, etc.*

JUNE 6-12: EXAMINATION BY JOHN & YOKO + FLUXSCHOOL

Various questions, lectures and other possible and impossible tasks submitted to participants in a classroom environment.  
(George Brecht, Robert Filliou, Bici Hendricks, Geoff Hendricks, Henry Flynt, John Lennon, George Maciunas, Yoko Ono, Ben Patterson,  
Mieko Shiomi, Ben Vautier, Bob Watts.)

FOR FURTHER INFORMATION CALL: 966 6986 OR 925 7360



The Museum of Modern Art Archives, NY	Collection:	Series.Folder:
	Silverman Fluxus Archives	I.929

FLUXFEST PRESENTATION OF JOHN LENNON & YOKO ONO + \* 1 TO 8PM, AT JOE JONES STORE, 18 N. MOORE ST. (AT CANAL  
OPENING: APR. 11, 4PM. GRAPEFRUIT FLUX-BANQUET: grapefruit hors d'oeuvre, grapefruit soup, grapefruit dumplings, grapefruit  
mashed potatoes, grapefruit rice stuffing, grapefruit pancakes, grapefruit icecream, grapefruit wine, grapefruit cocktail, etc. (by Flux-chefs)

APR. 11-17: DO IT YOURSELF. BY JOHN & YOKO + EVERYBODY

1. Painting to be stepped on, (Yoko Ono '61) ink pad as door mat.
2. Painting to hammer a nail (Yoko Ono '61)
3. 2 Eggs (John Lennon '70)
4. Flux-eggs (G.M.) eggs filled with paint & to be thrown against wall.
5. Draw Circle painting (Yoko Ono '64)
6. Graffiti wall
7. Kitchen Piece (Yoko Ono '60) painting to wipe hands and floor with.
8. Osmosis (G.M. '60) india ink onto puddle of water.

APR. 18-24: TICKETS BY JOHN LENNON + FLUXTOURS

(Selling to the public various tickets: desolate, unknown, funny 7 distant places (\$1 to \$300 (for Siberia)), Chinese theatre, sky tours, abandon  
buildings & narrow streets (10¢) (John Lennon); tickets to visit famous people (Y. Wada); 100 tickets to same seat, same day show (10¢)  
(Ben Vautier); tickets to locked up theatre (ben Vautier); outdated tickets (10¢) (G.M.). Also available will be lottery tickets to win tickets.

APR. 25-MAY 1: MEASURE BY JOHN & YOKO + HI RED CLINIC + FLUXDOCTORS (by Hi Red Center unless noted otherwise)

Various measurements are taken of each visitor by white coated attendants in a clinic environment: head volume, mouth, palm, pocket  
capacity, extended tongue length, hair strength, maximum kick; by Bob Watts: shoe/foot difference, inflated cheek width, temperature inside  
shoe or pocket, weight of pocket fuzz; by G. Maciunas: forefinger punch strength, kick strength, hand grip strength (crushing egg), vision  
above forehead, saliva or tear production, vision with wrong spectacles, smell, pain sensitivity, number of hairs in nostril, weight with one foot  
off the scale, minimum sway, stomach elasticity, capacity to shrink or expand; by Brian Lane: distance to blow out candle, X-ray vision;  
by Joe Jones: electric chair to measure electric conductivity and sound sensitivity (in window); by Yoko Ono: distance from the store to  
the nearest water; by John Lennon: distance from the nearest water to the store. (\$1 ADMISSION CHARGE)

MAY 2-8: BLUE ROOM BY JOHN & YOKO + FLUXLIARS (visitors should be dressed in white)

- Entire room (floor, walls, ceiling), exterior (door & window), and interior furnishings are to be white.
1. soft rubber ball with sign: This sphere will be a sharp point when it gets to the far side of the room in your mind. (Yoko Ono '64)
  2. an upright needle with sign: Forget it. (Yoko Ono) another one with sign: Needle (John Lennon, 1970)
  3. A cup on a table with sign:  
Not to be appreciated until it's broken, (Yoko Ono '66). another one with sign: Mend, (Yoko Ono '66)
  4. A very large box with sign:  
This is not here (Yoko Ono '67)
  5. window sign: This window is 2000ft wide (Yoko Ono '67), also This window is 5ft wide (John Lennon '67)
  6. Long straight line with sign: This line is a part of a large sphere, a straight line exists only in your mind, (Yoko Ono, 1966 & 70)
  7. Other interior signs: Stay until the room is blue (Yoko Ono '66); Do not disturb (John Lennon '70); Use ashtray for ashes (Yoko Ono '66)
  8. Signs by George Brecht (1961): No Smoking, Exit (on blank wall), Entry (on exit), forget this, listen, location, silence (at exit),  
middle (at edge of room), day/night (at night/day).
  9. Exterior signs: spring, rain, sky, wind, etc. (according to weather) (Yoko Ono '67)
  - Window display: 2 sets of 4 spoons, one set with sign: 3 spoons (Yoko Ono '67), and another with sign: 4 spoons (John Lennon, 1970)

MAY 9-15: WEIGHT & WATER BY JOHN & YOKO + FLUXFAUCET

Store floor flooded with water to about 1" height. Visitors either barefooted or provided with rubber boots with weights (Yoko + Maciunas)

- Various objects floating or sunk to the floor: 1. A dry sponge (Yoko + John, 1970); 2. A wet sponge (Yoko + John, 1970)  
3. Three Aqueous Events: ice, water, steam (George Brecht '60); 4. Symphony no. 3: in the water (George Brecht, 1964)  
5. 10 look-alike boxes of different weights, from light, floating on the surface, to heavy ones glued to the floor. (Yoko + Takako Saito)  
Window display: Drip Music (George Brecht, 1959) Automatic drip with amplified sound of the drip, (realized by Joe Jones)

MAY 16-22: CAPSULE BY JOHN & YOKO + FLUX SPACE CENTER (\$1 ADMISSION CHARGE)

- A 3ft cube enclosure (capsule) having various film loops projected on its 3 walls, ceiling and floor to a single viewer inside, about 8 minutes.  
1. transition from small to large screens; 2. single frame exposures of Sears Catalogue pages (both by Paul Sharits, 1966)  
3. transition from white to black (George Brecht, 1965) 4. linear fall; 5. linear turn (carrousel fashion) (both by G. Maciunas, 1966)  
6. transition through color scale (Ayo, 1969); 7. No. 4 (close up of walking nude buttock) (Yoko Ono, 1966) 8. Flicker (J. Cavanaugh, 1965)  
9. clouds (Geoff Hendricks, 1970); 10. slide projection of: diffusion and osmosis of solvents (G. Maciunas, 1969)

MAY 23-29: PORTRAIT OF JOHN LENNON AS A YOUNG CLOUD BY YOKO ONO + EVERYPARTICIPANT

A 6ft x 10ft wall of 100 drawers (containing more boxes), and doors, all empty inside except one with a microscope entitled: John's smile.  
Musical portrait of John Lennon (by Joe Jones) when one of the doors is opened.

MAY 23, 7PM. PORTRAIT OF MALKA SAFRO, by Henry Flynt, performed by him on violin.

MAY 30-JUNE 5: THE STORE BY JOHN & YOKO + FLUXFACTORY

Coin operated vending machines: 1. machine devouring deposited objects, 2. crying machine dispensing tears, 3. machine dispensing sky (air  
fall 3 by Yoko Ono), 4. change machine dispensing metal slugs (fake coins for a penny) (John Lennon), 5. change machine dispensing peni  
for a dime (G.M. 1951), 6. drink dispenser dispensing drink with water soluble or leaking cup (G.M.), 7. nut dispenser dispensing into palm  
loose sand or glue or an endless string (G. Maciunas), 8. Cigarette dispenser dispensing cigarettes with rope, dried fruit, sawdust & other fillin  
9. perfume dispenser dispensing various strange scents and smokes (Yoshimasa Wada), 10. rain machine (Ayo)  
Sale of body accessories: halos, horns, 3rd eyes, tails, hoofs, skin blemishes, scars, etc. (Yoko Ono)  
Sale of Flux-shop products: games, puzzles, jokes, gags, relics, foods, drinks, drugs, sports, playing cards, furniture, films, music boxes and  
machines, postage stamps, envelopes, maps, atlases, tattoos, posters, boxes, books, clocks, etc.

JUNE 6-12: EXAMINATION BY JOHN & YOKO + FLUXSCHOOL

Various questions, lectures and other possible and impossible tasks submitted to participants in a classroom environment.  
(George Brecht, Robert Filliou, Bici Hendricks, Geoff Hendricks, Henry Flynt, John Lennon, George Maciunas, Yoko Ono, Ben Patterson,  
Mieko Shiomi, Ben Vautier, Bob Watts.)

FOR FURTHER INFORMATION CALL: 966 6986 OR 925 7360



The Museum of Modern Art Archives, NY	Collection:	Series.Folder:
	Silverman Fluxus Archives	I.929

FLUXFEST PRESENTATION OF JOHN LENNON & YOKO ONO + \* 1 TO 8PM, AT JOE JONES STORE, 18 N. MOORE ST. (AT CANAL  
OPENING: APR. 11, 4PM. GRAPEFRUIT FLUX-BANQUET: grapefruit hors d'oeuvre, grapefruit soup, grapefruit dumplings, grapefruit  
mashed potatoes, grapefruit rice stuffing, grapefruit pancakes, grapefruit icecream, grapefruit wine, grapefruit cocktail, etc. (by Flux-chefs)

APR. 11-17: DO IT YOURSELF. BY JOHN & YOKO + EVERYBODY

1. Painting to be stepped on, (Yoko Ono '61) ink pad as door mat. 2. Painting to hammer a nail (Yoko Ono '61) 3. 2 Eggs (John Lennon '70)
4. Flux-eggs (G.M.) eggs filled with paint & to be thrown against wall. 5. Draw Circle painting (Yoko Ono '64) 6. Graffiti wall
7. Kitchen Piece (Yoko Ono '60) painting to wipe hands and floor with. 8. Osmosis (G.M. '60) india ink onto puddle of water.

APR. 18-24: TICKETS BY JOHN LENNON + FLUXTOURS

(Selling to the public various tickets: desolate, unknown, funny 7 distant places (\$1 to \$300 [for Siberia]), Chinese theatre, sky tours, abandon  
buildings & narrow streets (10¢) (John Lennon); tickets to visit famous people (Y. Wada); 100 tickets to same seat, same day show (10¢)  
(Ben Vautier); tickets to locked up theatre (ben Vautier); outdated tickets (10¢) (G.M.). Also available will be lottery tickets to win tickets.

APR. 25-MAY 1: MEASURE BY JOHN & YOKO + HI RED CLINIC + FLUXDOCTORS (by Hi Red Center unless noted otherwise)

Various measurements are taken of each visitor by white coated attendants in a clinic environment: head volume, mouth, palm, pocket  
capacity, extended tongue length, hair strength, maximum kick; by Bob Watts: shoe/foot difference, inflated cheek width, temperature inside  
shoe or pocket, weight of pocket fuzz; by G. Maciunas: forefinger punch strength, kick strength, hand grip strength (crushing egg), vision  
above forehead, saliva or tear production, vision with wrong spectacles, smell, pain sensitivity, number of hairs in nostril, weight with one foot  
off the scale, minimum sway, stomach elasticity, capacity to shrink or expand; by Brian Lane: distance to blow out candle, X-ray vision;  
by Joe Jones: electric chair to measure electric conductivity and sound sensitivity (in window); by Yoko Ono: distance from the store to  
the nearest water; by John Lennon: distance from the nearest water to the store. (\$1 ADMISSION CHARGE)

MAY 2-8: BLUE ROOM BY JOHN & YOKO + FLUXLIARS (visitors should be dressed in white)

Entire room (floor, walls, ceiling), exterior (door & window), and interior furnishings are to be white.  
1. soft rubber ball with sign: This sphere will be a sharp point when it gets to the far side of the room in your mind. (Yoko Ono '64)  
2. an upright needle with sign: Forget it. (Yoko Ono) another one with sign: Needle (John Lennon, 1970) 3. A cup on a table with sign:  
Not to be appreciated until it's broken, (Yoko Ono '66). another one with sign: Mend, (Yoko Ono '66) 4. A very large box with sign:  
This is not here (Yoko Ono '67) 5. window sign: This window is 2000ft wide (Yoko Ono '67), also This window is 5ft wide (John Lennon)  
6. Long straight line with sign: This line is a part of a large sphere, a straight line exists only in your mind, (Yoko Ono, 1966 & 70)  
7. Other interior signs: Stay until the room is blue (Yoko Ono '66); Do not disturb (John Lennon '70); Use ashtray for ashes (Yoko Ono '66)  
8. Signs by George Brecht (1961): No Smoking, Exit (on blank wall), Entry (on exit), forget this, listen, location, silence (at exit),  
middle (at edge of room), day/night (at night/day). 9. Exterior signs: spring, rain, sky, wind, etc. (according to weather) (Yoko Ono '67)  
Window display: 2 sets of 4 spoons, one set with sign: 3 spoons (Yoko Ono '67), and another with sign: 4 spoons (John Lennon, 1970)

MAY 9-15: WEIGHT & WATER BY JOHN & YOKO + FLUXFAUCET

Store floor flooded with water to about 1" height. Visitors either barefooted or provided with rubber boots with weights (Yoko + Maciunas)  
Various objects floating or sunk to the floor: 1. A dry sponge (Yoko + John, 1970); 2. A wet sponge (Yoko + John, 1970)  
3. Three Aqueous Events: ice, water, steam (George Brecht '60); 4. Symphony no. 3: in the water (George Brecht, 1964)  
5. 10 look-alike boxes of different weights, from light, floating on the surface, to heavy ones glued to the floor. (Yoko + Takako Saito)  
Window display: Drip Music (George Brecht, 1959) Automatic drip with amplified sound of the drip, (realized by Joe Jones)

MAY 16-22: CAPSULE BY JOHN & YOKO + FLUX SPACE CENTER (\$1 ADMISSION CHARGE)

A 3ft cube enclosure (capsule) having various film loops projected on its 3 walls, ceiling and floor to a single viewer inside, about 8 minutes.  
1. transition from small to large screens; 2. single frame exposures of Sears Catalogue pages (both by Paul Sharits, 1966)  
3. transition from white to black (George Brecht, 1965) 4. linear fall; 5. linear turn (carrousel fashion) (both by G. Maciunas, 1966)  
6. transition through color scale (Ayo, 1969); 7. No. 4 (close up of walking nude buttock) (Yoko Ono, 1966) 8. Flicker (J. Cavanaugh, 1965)  
9. clouds (Geoff Hendricks, 1970); 10. slide projection of: diffusion and osmosis of solvents (G. Maciunas, 1969)

MAY 23-29: PORTRAIT OF JOHN LENNON AS A YOUNG CLOUD BY YOKO ONO + EVERYPARTICIPANT

A 6ft x 10ft wall of 100 drawers (containing more boxes), and doors, all empty inside except one with a microscope entitled: John's smile.  
Musical portrait of John Lennon (by Joe Jones) when one of the doors is opened.

MAY 23, 7PM. PORTRAIT OF MALKA SAFRO, by Henry Flynt, performed by him on violin.

MAY 30-JUNE 5: THE STORE BY JOHN & YOKO + FLUXFACTORY

Coin operated vending machines: 1. machine devouring deposited objects, 2. crying machine dispensing tears, 3. machine dispensing sky (air  
all 3 by Yoko Ono), 4. change machine dispensing metal slugs (fake coins for a penny) (John Lennon), 5. change machine dispensing peni  
for a dime (G.M. 1951), 6. drink dispenser dispensing drink with water soluble or leaking cup (G.M.), 7. nut dispenser dispensing into palm  
loose sand or glue or an endless string (G. Maciunas), 8. Cigarette dispenser dispensing cigarettes with rope, dried fruit, sawdust & other fillin  
9. perfume dispenser dispensing various strange scents and smokes (Yoshimasa Wada), 10. rain machine (Ayo)

Sale of body accessories: halos, horns, 3rd eyes, tails, hoofs, skin blemishes, scars, etc. (Yoko Ono)

Sale of Flux-shop products: games, puzzles, jokes, gags, relics, foods, drinks, drugs, sports, playing cards, furniture, films, music boxes and  
machines, postage stamps, envelopes, maps, atlases, tattoos, posters, boxes, books, clocks, etc.

JUNE 6-12: EXAMINATION BY JOHN & YOKO + FLUXSCHQOL

Various questions, lectures and other possible and impossible tasks submitted to participants in a classroom environment.  
(George Brecht, Robert Filliou, Bici Hendricks, Geoff Hendricks, Henry Flynt, John Lennon, George Maciunas, Yoko Ono, Ben Patterson,  
Mieko Shiomi, Ben Vautier, Bob Watts.)

FOR FURTHER INFORMATION CALL: 966 6986 OR 925 7360



The Museum of Modern Art Archives, NY	Collection:	Series.Folder:
	Silverman Fluxus Archives	I.929

FLUXFEST PRESENTATION OF JOHN LENNON & YOKO ONO + \* 1 TO 8PM, AT JOE JONES STORE, 18 N. MOORE ST. (AT CANAL

OPENING: APR. 11, 4PM. GRAPEFRUIT FLUX-BANQUET: grapefruit hors d'oeuvre, grapefruit soup, grapefruit dumplings, grapefruit mashed potatoes, grapefruit rice stuffing, grapefruit pancakes, grapefruit icecream, grapefruit wine, grapefruit cocktail, etc. (by Flux-chefs)

APR. 11-17: DO IT YOURSELF. BY JOHN & YOKO + EVERYBODY

1. Painting to be stepped on, (Yoko Ono '61) ink pad as door mat.
2. Painting to hammer a nail (Yoko Ono '61)
3. 2 Eggs (John Lennon '70)
4. Flux-eggs (G.M.) eggs filled with paint & to be thrown against wall.
5. Draw Circle painting (Yoko Ono '64)
6. Graffiti wall
7. Kitchen Piece (Yoko Ono '60) painting to wipe hands and floor with.
8. Osmosis (G.M. '60) india ink onto puddle of water.

APR. 18-24: TICKETS BY JOHN LENNON + FLUXTOURS

Selling to the public various tickets: desolate, unknown, funny 7 distant places (\$1 to \$300 [for Siberia]), Chinese theatre, sky tours, abandon buildings & narrow streets (10¢) (John Lennon); tickets to visit famous people (Y. Wada); 100 tickets to same seat, same day show (10¢) (Ben Vautier); tickets to locked up theatre (ben Vautier); outdated tickets (10¢) (G.M.). Also available will be lottery tickets to win tickets.

APR. 25-MAY 1: MEASURE BY JOHN & YOKO + HI RED CLINIC + FLUXDOCTORS (by Hi Red Center unless noted otherwise)

Various measurements are taken of each visitor by white coated attendants in a clinic environment: head volume, mouth, palm, pocket capacity, extended tongue length, hair strength, maximum kick; by Bob Watts: shoe/foot difference, inflated cheek width, temperature inside shoe or pocket, weight of pocket fuzz; by G. Maciunas: forefinger punch strength, kick strength, hand grip strength (crushing egg), vision above forehead, saliva or tear production, vision with wrong spectacles, smell, pain sensitivity, number of hairs in nostril, weight with one foot off the scale, minimum sway, stomach elasticity, capacity to shrink or expand; by Brian Lane: distance to blow out candle, X-ray vision; by Joe Jones: electric chair to measure electric conductivity and sound sensitivity (in window); by Yoko Ono: distance from the store to the nearest water; by John Lennon: distance from the nearest water to the store. (\$1 ADMISSION CHARGE)

MAY 2-8: BLUE ROOM BY JOHN & YOKO + FLUXLIARS (visitors should be dressed in white)

Entire room (floor, walls, ceiling), exterior (door & window), and interior furnishings are to be white.

1. soft rubber ball with sign: *This sphere will be a sharp point when it gets to the far side of the room in your mind.* (Yoko Ono '64)
2. an upright needle with sign: *Forget it.* (Yoko Ono) another one with sign: *Needle* (John Lennon, 1970)
3. A cup on a table with sign: *Not to be appreciated until it's broken,* (Yoko Ono '66).
4. A very large box with sign: *This is not here* (Yoko Ono '67)
5. window sign: *This window is 2000ft wide* (Yoko Ono '67), also *This window is 5ft wide* (John Lennon '70)
6. Long straight line with sign: *This line is a part of a large sphere, a straight line exists only in your mind,* (Yoko Ono, 1966 & 70)
7. Other interior signs: *Stay until the room is blue* (Yoko Ono '66); *Do not disturb* (John Lennon '70); *Use ashtray for ashes* (Yoko Ono '66)
8. Signs by George Brecht (1961): *No Smoking*, *Exit* (on blank wall), *Entry* (on exit), *forget this*, *listen*, *location*, *silence* (at exit), *middle* (at edge of room), *day/night* (at night/day).
9. Exterior signs: *spring*, *rain*, *sky*, *wind*, etc. (according to weather) (Yoko Ono '67)
- Window display: 2 sets of 4 spoons, one set with sign: *3 spoons* (Yoko Ono '67), and another with sign: *4 spoons* (John Lennon, 1970)

MAY 9-15: WEIGHT & WATER BY JOHN & YOKO + FLUXFAUCET

Store floor flooded with water to about 1" height. Visitors either barefooted or provided with rubber boots with weights (Yoko + Maciunas)

1. A dry sponge (Yoko + John, 1970);
2. A wet sponge (Yoko + John, 1970)
3. Three Aqueous Events: *ice*, *water*, *steam* (George Brecht '60);
4. *Symphony no. 3: in the water* (George Brecht, 1964)
5. 10 look-alike boxes of different weights, from light, floating on the surface, to heavy ones glued to the floor. (Yoko + Takako Saito)
- Window display: *Drip Music* (George Brecht, 1959) Automatic drip with amplified sound of the drip, (realized by Joe Jones)

MAY 16-22: CAPSULE BY JOHN & YOKO + FLUX SPACE CENTER (\$1 ADMISSION CHARGE)

A 3ft cube enclosure (capsule) having various film loops projected on its 3 walls, ceiling and floor to a single viewer inside, about 8 minutes.

1. transition from small to large screens;
2. single frame exposures of Sears Catalogue pages (both by Paul Sharits, 1966)
3. transition from white to black (George Brecht, 1965)
4. linear fall;
5. linear turn (carousel fashion) (both by G. Maciunas, 1966)
6. transition through color scale (Ayo, 1969);
7. No. 4 (close up of walking nude buttock) (Yoko Ono, 1966)
8. Flicker (J. Cavanaugh, 1965)
9. clouds (Geoff Hendricks, 1970);
10. slide projection of: diffusion and osmosis of solvents (G. Maciunas, 1969)

MAY 23-29: PORTRAIT OF JOHN LENNON AS A YOUNG CLOUD BY YOKO ONO + EVERYPARTICIPANT

A 6ft x 10ft wall of 100 drawers (containing more boxes), and doors, all empty inside except one with a microscope entitled: *John's smile*. Musical portrait of John Lennon (by Joe Jones) when one of the doors is opened.

MAY 23, 7PM. PORTRAIT OF MALKA SAFRO, by Henry Flynt, performed by him on violin.

MAY 30-JUNE 5: THE STORE BY JOHN & YOKO + FLUXFACTORY

Coin operated vending machines: 1. machine devouring deposited objects, 2. crying machine dispensing tears, 3. machine dispensing sky (air, all 3 by Yoko Ono), 4. change machine dispensing metal slugs (fake coins for a penny) (John Lennon), 5. change machine dispensing pen for a dime (G.M. 1951), 6. drink dispenser dispensing drink with water soluble or leaking cup (G.M.), 7. nut dispenser dispensing into palm. Loose sand or glue or an endless string (G. Maciunas), 8. Cigarette dispenser dispensing cigarettes with rope, dried fruit, sawdust & other fillin 9. perfume dispenser dispensing various strange scents and smokes (Yoshimasa Wada), 10. rain machine (Ayo)

Sale of body accessories: halos, horns, 3rd eyes, tails, hoofs, skin blemishes, scars, etc. (Yoko Ono)

Sale of Flux-shop products: games, puzzles, jokes, gags, relics, foods, drinks, drugs, sports, playing cards, furniture, films, music boxes and machines, postage stamps, envelopes, maps, atlases, tattoos, posters, boxes, books, clocks, etc.

JUNE 6-12: EXAMINATION BY JOHN & YOKO + FLUXSCHOOL

Various questions, lectures and other possible and impossible tasks submitted to participants in a classroom environment. (George Brecht, Robert Filliou, Bici Hendricks, Geoff Hendricks, Henry Flynt, John Lennon, George Maciunas, Yoko Ono, Ben Patterson, Miekko Shiomi, Ben Vautier, Bob Watts.)

FOR FURTHER INFORMATION CALL: 966 6986 OR 925 7360



The Museum of Modern Art Archives, NY	Collection:	Series.Folder:
	Silverman Fluxus Archives	I.929

FLUXFEST PRESENTATION OF JOHN LENNON & YOKO ONO + \* 1 TO 8PM, AT JOE JONES STORE, 18 N. MOORE ST. (AT CANAL

OPENING: APR. 11, 4PM. GRAPEFRUIT FLUX-BANQUET: grapefruit hors d'oeuvre, grapefruit soup, grapefruit dumplings, grapefruit  
mashed potatoes, grapefruit rice stuffing, grapefruit pancakes, grapefruit icecream, grapefruit wine, grapefruit cocktail, etc. (by Flux-chefs)

APR. 11-17: DO IT YOURSELF. BY JOHN & YOKO + EVERYBODY

1. Painting to be stepped on, (Yoko Ono '61) ink pad as door mat.
2. Painting to hammer a nail (Yoko Ono '61)
3. 2 Eggs (John Lennon '70,
4. Flux-eggs (G.M.) eggs filled with paint & to be thrown against wall.
5. Draw Circle painting (Yoko Ono '64)
6. Graffiti wall
7. Kitchen Piece (Yoko Ono '60) painting to wipe hands and floor with.
8. Osmosis (G.M. '60) india ink onto puddle of water.

APR. 18-24: TICKETS BY JOHN LENNON + FLUXTOURS

Selling to the public various tickets: desolate, unknown, funny 7 distant places (\$1 to \$300 [for Siberia]), Chinese theatre, sky tours, abandon  
buildings & narrow streets (10¢) (John Lennon); tickets to visit famous people (Y. Wada); 100 tickets to same seat, same day show (10¢)  
(Ben Vautier); tickets to locked up theatre (ben Vautier); outdated tickets (10¢) (G.M.). Also available will be lottery tickets to win tickets.

APR. 25-MAY 1: MEASURE BY JOHN & YOKO + HI RED CLINIC + FLUXDOCTORS (by Hi Red Center unless noted otherwise)

Various measurements are taken of each visitor by white coated attendants in a clinic environment: head volume, mouth, palm, pocket  
capacity, extended tongue length, hair strength, maximum kick; by Bob Watts: shoe/foot difference, inflated cheek width, temperature insic  
shoe or pocket, weight of pocket fuzz; by G. Maciunas: forefinger punch strength, kick strength, hand grip strength (crushing egg), vision  
above forehead, saliva or tear production, vision with wrong spectacles, smell, pain sensitivity, number of hairs in nostril, weight with one foc  
off the scale, minimum sway, stomach elasticity, capacity to shrink or expand; by Brian Lane: distance to blow out candle, X-ray vision;  
by Joe Jones: electric chair to measure electric conductivity and sound sensitivity (in window); by Yoko Ono: distance from the store to  
the nearest water; by John Lennon: distance from the nearest water to the store. (\$1 ADMISSION CHARGE)

MAY 2-8: BLUE ROOM BY JOHN & YOKO + FLUXLIARS (visitors should be dressed in white)

Entire room (floor, walls, ceiling), exterior (door & window), and interior furnishings are to be white.

1. soft rubber ball with sign: This sphere will be a sharp point when it gets to the far side of the room in your mind. (Yoko Ono '64)
2. an upright needle with sign: Forget it. (Yoko Ono) another one with sign: Needle (John Lennon, 1970)
3. A cup on a table with sign:  
Not to be appreciated until it's broken, (Yoko Ono '66). another one with sign: Mend, (Yoko Ono '66)
4. A very large box with sign:  
This is not here (Yoko Ono '67)
5. window sign: This window is 2000ft wide (Yoko Ono '67), also This window is 5ft wide (John Lennon  
6. Long straight line with sign: This line is a part of a large sphere, a straight line exists only in your mind, (Yoko Ono, 1966 & 70)
7. Other interior signs: Stay until the room is blue (Yoko Ono '66); Do not disturb (John Lennon '70); Use ashtray for ashes (Yoko Ono '6)
8. Signs by George Brecht (1961): No Smoking, Exit (on blank wall), Entry (on exit), forget this, listen, location, silence (at exit),  
middle (at edge of room), day/night (at night/day).
9. Exterior signs: spring, rain, sky, wind, etc. (according to weather) (Yoko Ono '67)
- Window display: 2 sets of 4 spoons, one set with sign: 3 spoons (Yoko Ono '67), and another with sign: 4 spoons (John Lennon, 1970)

MAY 9-15: WEIGHT & WATER BY JOHN & YOKO + FLUXFAUCET

Store floor flooded with water to about 1" height. Visitors either barefooted or provided with rubber boots with weights (Yoko + Maciunas);  
Various objects floating or sunk to the floor: 1. A dry sponge (Yoko + John, 1970); 2. A wet sponge (Yoko + John, 1970)

3. Three Aqueous Events: ice, water, steam (George Brecht '60); 4. Symphony no. 3: in the water (George Brecht, 1964)
5. 10 look-alike boxes of different weights, from light, floating on the surface, to heavy ones glued to the floor. (Yoko + Takako Saito)
- Window display: Drip Music (George Brecht, 1959) Automatic drip with amplified sound of the drip, (realized by Joe Jones)

MAY 16-22: CAPSULE BY JOHN & YOKO + FLUX SPACE CENTER (\$1 ADMISSION CHARGE)

A 3ft cube enclosure (capsule) having various film loops projected on its 3 walls, ceiling and floor to a single viewer inside, about 8 minutes

1. transition from small to large screens;
2. single frame exposures of Sears Catalogue pages (both by Paul Sharits, 1966)
3. transition from white to black (George Brecht, 1965)
4. linear fall;
5. linear turn (carousel fashion) (both by G. Maciunas, 1966)
6. transition through color scale (Ayo, 1969);
7. No. 4 (close up of walking nude buttock) (Yoko Ono, 1966)
8. Flicker (J. Cavanaugh, 1965,
9. clouds (Geoff Hendricks, 1970);
10. slide projection of: diffusion and osmosis of solvents (G. Maciunas, 1969)

MAY 23-29: PORTRAIT OF JOHN LENNON AS A YOUNG CLOUD BY YOKO ONO + EVERYPARTICIPANT

A 6ft x 10ft wall of 100 drawers (containing more boxes), and doors, all empty inside except one with a microscope entitled: John's smile.  
Musical portrait of John Lennon (by Joe Jones) when one of the doors is opened.

MAY 23, 7PM. PORTRAIT OF MALKA SAFRO, by Henry Flynt, performed by him on violin.

MAY 30-JUNE 5: THE STORE BY JOHN & YOKO + FLUXFACTORY

Coin operated vending machines: 1. machine devouring deposited objects, 2. crying machine dispensing tears, 3. machine dispensing sky (ai  
all 3 by Yoko Ono), 4. change machine dispensing metal slugs (fake coins for a penny) (John Lennon), 5. change machine dispensing per  
for a dime (G.M. 1951), 6. drink dispenser dispensing drink with water soluble or leaking cup (G.M.), 7. nut dispenser dispensing into palm  
loose sand or glue or an endless string (G. Maciunas), 8. Cigarette dispenser dispensing cigarettes with rope, dried fruit, sawdust & other filli.  
9. perfume dispenser dispensing various strange scents and smokes (Yoshimasa Wada), 10. rain machine (Ayo)

Sale of body accessories: halos, horns, 3rd eyes, tails, hoofs, skin blemishes, scars, etc. (Yoko Ono)

Sale of Flux-shop products: games, puzzles, jokes, gags, relics, foods, drinks, drugs, sports, playing cards, furniture, films, music boxes and  
machines, postage stamps, envelopes, maps, atlases, tattoos, posters, boxes, books, clocks, etc.

JUNE 6-12: EXAMINATION BY JOHN & YOKO + FLUXSCHOOL

Various questions, lectures and other possible and impossible tasks submitted to participants in a classroom environment.

(George Brecht, Robert Filiou, Bici Hendricks, Geoff Hendricks, Henry Flynt, John Lennon, George Maciunas, Yoko Ono, Ben Patterson,  
Mieko Shiomi, Ben Vautier, Bob Watts.)

FOR FURTHER INFORMATION CALL: 966 6986 OR 925 7360



The Museum of Modern Art Archives, NY	Collection:	Series.Folder:
	Silverman Fluxus Archives	I.929

FLUXFEST PRESENTATION OF JOHN LENNON & YOKO ONO + \* 1 TO 8PM, AT JOE JONES STORE, 18 N. MOORE ST. (AT CANAL

OPENING: APR. 11, 4PM. GRAPEFRUIT FLUX-BANQUET: grapefruit hors d'oeuvre, grapefruit soup, grapefruit dumplings, grapefruit mashed potatoes, grapefruit rice stuffing, grapefruit pancakes, grapefruit icecream, grapefruit wine, grapefruit cocktail, etc. (by Flux-chefs)

APR. 11-17: DO IT YOURSELF. BY JOHN & YOKO + EVERYBODY

1. Painting to be stepped on, (Yoko Ono '61) ink pad as door mat. 2. Painting to hammer a nail (Yoko Ono '61) 3. 2 Eggs (John Lennon '70)
4. Flux-eggs (G.M.) eggs filled with paint & to be thrown against wall. 5. Draw Circle painting (Yoko Ono '64) 6. Graffiti wall
7. Kitchen Piece (Yoko Ono '60) painting to wipe hands and floor with. 8. Osmosis (G.M. '60) india ink onto puddle of water.

APR. 18-24: TICKETS BY JOHN LENNON + FLUXTOURS

Selling to the public various tickets: *desolate, unknown, funny 7 distant places (\$1 to \$300 [for Siberia]), Chinese theatre, sky tours, abandon buildings & narrow streets (10¢) (John Lennon); tickets to visit famous people (Y. Wada); 100 tickets to same seat, same day show (10¢) (Ben Vautier); tickets to locked up theatre (ben Vautier); outdated tickets (10¢) (G.M.).* Also available will be lottery tickets to win tickets.

APR. 25-MAY 1: MEASURE BY JOHN & YOKO + HI RED CLINIC + FLUXDOCTORS (by Hi Red Center unless noted otherwise)

Various measurements are taken of each visitor by white coated attendants in a clinic environment: *head volume, mouth, palm, pocket capacity, extended tongue length, hair strength, maximum kick;* by Bob Watts: *shoe/foot difference, inflated cheek width, temperature inside shoe or pocket, weight of pocket fuzz;* by G. Maciunas: *forefinger punch strength, kick strength, hand grip strength (crushing egg), vision above forehead, saliva or tear production, vision with wrong spectacles, smell, pain sensitivity, number of hairs in nostril, weight with one foot off the scale, minimum sway, stomach elasticity, capacity to shrink or expand;* by Brian Lane: *distance to blow out candle, X-ray vision;* by Joe Jones: *electric chair to measure electric conductivity and sound sensitivity (in window);* by Yoko Ono: *distance from the store to the nearest water;* by John Lennon: *distance from the nearest water to the store. (\$1 ADMISSION CHARGE)*

MAY 2-8: BLUE ROOM BY JOHN & YOKO + FLUXLIARS (visitors should be dressed in white)

Entire room (floor, walls, ceiling), exterior (door & window), and interior furnishings are to be white.

1. soft rubber ball with sign: *This sphere will be a sharp point when it gets to the far side of the room in your mind. (Yoko Ono '64)*
2. an upright needle with sign: *Forget it. (Yoko Ono)* another one with sign: *Needle (John Lennon, 1970)* 3. A cup on a table with sign: *Not to be appreciated until it's broken, (Yoko Ono '66).* another one with sign: *Mend, (Yoko Ono '66)* 4. A very large box with sign: *This is not here (Yoko Ono '67)* 5. window sign: *This window is 2000ft wide (Yoko Ono '67),* also *This window is 5ft wide (John Lennon '67)*
6. Long straight line with sign: *This line is a part of a large sphere, a straight line exists only in your mind, (Yoko Ono, 1966 & 70)*
7. Other interior signs: *Stay until the room is blue (Yoko Ono '66); Do not disturb (John Lennon '70); Use ashtray for ashes (Yoko Ono '66)*
8. Signs by George Brecht (1961): *No Smoking, Exit (on blank wall), Entry (on exit), forget this, listen, location, silence (at exit), middle (at edge of room), day/night (at night/day).* 9. Exterior signs: *spring, rain, sky, wind, etc. (according to weather) (Yoko Ono '67)*
- Window display: 2 sets of 4 spoons, one set with sign: *3 spoons (Yoko Ono '67),* and another with sign: *4 spoons (John Lennon, 1970)*

MAY 9-15: WEIGHT & WATER BY JOHN & YOKO + FLUXFAUCET

Store floor flooded with water to about 1" height. Visitors either barefooted or provided with rubber boots with weights (Yoko + Maciunas)

1. Various objects floating or sunk to the floor: 1. *A dry sponge (Yoko + John, 1970);* 2. *A wet sponge (Yoko + John, 1970)*
3. *Three Aqueous Events: ice, water, steam (George Brecht '60);* 4. *Symphony n°3: in the water (George Brecht, 1964)*
5. 10 look-alike boxes of different weights, from light, floating on the surface, to heavy ones glued to the floor. (Yoko + Takako Saito)
- Window display: *Drip Music (George Brecht, 1959)* Automatic drip with amplified sound of the drip, (realized by Joe Jones)

MAY 16-22: CAPSULE BY JOHN & YOKO + FLUX SPACE CENTER (\$1 ADMISSION CHARGE)

1. A 3ft cube enclosure (capsule) having various film loops projected on its 3 walls, ceiling and floor to a single viewer inside, about 8 minutes.
2. *transition from small to large screens;* 3. *single frame exposures of Sears Catalogue pages (both by Paul Sharits, 1966)*
4. *transition from white to black (George Brecht, 1965)* 5. *linear fall;* 6. *linear turn (carrousel fashion) (both by G.Maciunas, 1966)*
7. *No. 4 (close up of walking nude buttock) (Yoko Ono, 1966)* 8. *Flicker (J. Cavanaugh, 1965)*
9. *clouds (Geoff Hendricks, 1970);* 10. *slide projection of: diffusion and osmosis of solvents (G.Maciunas, 1969)*

MAY 23-29: PORTRAIT OF JOHN LENNON AS A YOUNG CLOUD BY YOKO ONO + EVERYPARTICIPANT

A 6ft x 10ft wall of 100 drawers (containing more boxes), and doors, all empty inside except one with a microscope entitled: *John's smile.*

*Musical portrait of John Lennon* (by Joe Jones) when one of the doors is opened.

MAY 23, 7PM. PORTRAIT OF MALKA SAFRO, by Henry Flynt, performed by him on violin.

MAY 30-JUNE 5: THE STORE BY JOHN & YOKO + FLUXFACTORY

1. Coin operated vending machines: 1. *machine devouring deposited objects,* 2. *crying machine dispensing tears,* 3. *machine dispensing sky (air all 3 by Yoko Ono),* 4. *change machine dispensing metal slugs (fake coins for a penny) (John Lennon),* 5. *change machine dispensing peni for a dime (G.M. 1951),* 6. *drink dispenser dispensing drink with water soluble or leaking cup (G.M.),* 7. *nut dispenser dispensing into palm loose sand or glue or an endless string (G.Maciunas),* 8. *Cigarette dispenser dispensing cigarettes with rope, dried fruit, sawdust & other fillin*
9. *perfume dispenser dispensing various strange scents and smokes (Yoshimasa Wada),* 10. *rain machine (Ayo)*
11. Sale of body accessories: *halos, horns, 3rd eyes, tails, hoofs, skin blemishes, scars, etc. (Yoko Ono)*
12. Sale of Flux-shop products: *games, puzzles, jokes, gags, relics, foods, drinks, drugs, sports, playing cards, furniture, films, music boxes and machines, postage stamps, envelopes, maps, atlases, tattoos, posters, boxes, books, clocks, etc.*

JUNE 6-12: EXAMINATION BY JOHN & YOKO + FLUXSCHOOL

Various questions, lectures and other possible and impossible tasks submitted to participants in a classroom environment.  
(George Brecht, Robert Filliou, Bici Hendricks, Geoff Hendricks, Henry Flynt, John Lennon, George Maciunas, Yoko Ono, Ben Patterson, Mieko Shiomi, Ben Vautier, Bob Watts.)

FOR FURTHER INFORMATION CALL: 966 6986 OR 925 7360



The Museum of Modern Art Archives, NY	Collection:	Series.Folder:
	Silverman Fluxus Archives	I.929

FLUXFEST PRESENTATION OF JOHN LENNON & YOKO ONO + \* 1 TO 8PM, AT JOE JONES STORE, 18 N. MOORE ST. (AT CANAL

OPENING: APR. 11, 4PM. GRAPEFRUIT FLUX-BANQUET: grapefruit hors d'oeuvre, grapefruit soup, grapefruit dumplings, grapefruit mashed potatoes, grapefruit rice stuffing, grapefruit pancakes, grapefruit icecream, grapefruit wine, grapefruit cocktail, etc. (by Flux-chefs)

APR. 11-17: DO IT YOURSELF. BY JOHN & YOKO + EVERYBODY

1. Painting to be stepped on, (Yoko Ono '61) ink pad as door mat.
2. Painting to hammer a nail (Yoko Ono '61)
3. 2 Eggs (John Lennon '70)
4. Flux-eggs (G.M.) eggs filled with paint & to be thrown against wall.
5. Draw Circle painting (Yoko Ono '64)
6. Graffiti wall
7. Kitchen Piece (Yoko Ono '60) painting to wipe hands and floor with.
8. Osmosis (G.M. '60) india ink onto puddle of water.

APR. 18-24: TICKETS BY JOHN LENNON + FLUXTOURS

Selling to the public various tickets: *desolate, unknown, funny 7 distant places (\$1 to \$300 [for Siberia]), Chinese theatre, sky tours, abandoned buildings & narrow streets (10¢) (John Lennon); tickets to visit famous people (Y. Wada); 100 tickets to same seat, same day show (10¢) (Ben Vautier); tickets to locked up theatre (ben Vautier); outdated tickets (10¢) (G.M.).* Also available will be lottery tickets to win tickets.

APR. 25-MAY 1: MEASURE BY JOHN & YOKO + HI RED CLINIC + FLUXDOCTORS (by Hi Red Center unless noted otherwise)

Various measurements are taken of each visitor by white coated attendants in a clinic environment: *head volume, mouth, palm, pocket capacity, extended tongue length, hair strength, maximum kick;* by Bob Watts: *shoe/foot difference, inflated cheek width, temperature inside shoe or pocket, weight of pocket fuzz;* by G. Maciunas: *forefinger punch strength, kick strength, hand grip strength (crushing egg), vision above forehead, saliva or tear production, vision with wrong spectacles, smell, pain sensitivity, number of hairs in nostril, weight with one foot off the scale, minimum sway, stomach elasticity, capacity to shrink or expand;* by Brian Lane: *distance to blow out candle, X-ray vision;* by Joe Jones: *electric chair to measure electric conductivity and sound sensitivity (in window);* by Yoko Ono: *distance from the store to the nearest water;* by John Lennon: *distance from the nearest water to the store.* (\$1 ADMISSION CHARGE)

MAY 2-8: BLUE ROOM BY JOHN & YOKO + FLUXLIARS (visitors should be dressed in white)

Entire room (floor, walls, ceiling), exterior (door & window), and interior furnishings are to be white.

1. soft rubber ball with sign: *This sphere will be a sharp point when it gets to the far side of the room in your mind. (Yoko Ono '64)*
2. an upright needle with sign: *Forget it. (Yoko Ono)* another one with sign: *Needle (John Lennon, 1970)*
3. A cup on a table with sign: *Not to be appreciated until it's broken, (Yoko Ono '66).* another one with sign: *Mend, (Yoko Ono '66)*
4. A very large box with sign: *This is not here (Yoko Ono '67)*
5. window sign: *This window is 2000ft wide (Yoko Ono '67),* also *This window is 5ft wide (John Lennon '67)*
6. Long straight line with sign: *This line is a part of a large sphere, a straight line exists only in your mind, (Yoko Ono, 1966 & 70)*
7. Other interior signs: *Stay until the room is blue (Yoko Ono '66); Do not disturb (John Lennon '70); Use ashtray for ashes (Yoko Ono '66)*
8. Signs by George Brecht (1961): *No Smoking, Exit (on blank wall), Entry (on exit), forget this, listen, location, silence (at exit), middle (at edge of room), day/night (at night/day).*
9. Exterior signs: *spring, rain, sky, wind, etc. (according to weather) (Yoko Ono '67)*
- Window display: 2 sets of 4 spoons, one set with sign: *3 spoons (Yoko Ono '67),* and another with sign: *4 spoons (John Lennon, 1970)*

MAY 9-15: WEIGHT & WATER BY JOHN & YOKO + FLUXFAUCET

Store floor flooded with water to about 1" height. Visitors either barefooted or provided with rubber boots with weights (Yoko + Maciunas)

Various objects floating or sunk to the floor: 1. A dry sponge (Yoko + John, 1970); 2. A wet sponge (Yoko + John, 1970)

3. Three Aqueous Events: *ice, water, steam (George Brecht '60);* 4. *Symphony no. 3: in the water (George Brecht, 1964)*

5. 10 look-alike boxes of different weights, from light, floating on the surface, to heavy ones glued to the floor. (Yoko + Takako Saito)

Window display: *Drip Music (George Brecht, 1959)* Automatic drip with amplified sound of the drip, (realized by Joe Jones)

MAY 16-22: CAPSULE BY JOHN & YOKO + FLUX SPACE CENTER (\$1 ADMISSION CHARGE)

A 3ft cube enclosure (capsule) having various film loops projected on its 3 walls, ceiling and floor to a single viewer inside, about 8 minutes.

1. transition from small to large screens;
2. single frame exposures of Sears Catalogue pages (both by Paul Sharits, 1966)
3. transition from white to black (George Brecht, 1965)
4. linear fall;
5. linear turn (carousel fashion) (both by G. Maciunas, 1966)
6. transition through color scale (Ayo, 1969);
7. No. 4 (close up of walking nude buttock) (Yoko Ono, 1966)
8. Flicker (J. Cavanaugh, 1965)
9. clouds (Geoff Hendricks, 1970);
10. slide projection of: *diffusion and osmosis of solvents (G. Maciunas, 1969)*

MAY 23-29: PORTRAIT OF JOHN LENNON AS A YOUNG CLOUD BY YOKO ONO + EVERY PARTICIPANT

A 6ft x 10ft wall of 100 drawers (containing more boxes), and doors, all empty inside except one with a microscope entitled: *John's smile.*

Musical portrait of John Lennon (by Joe Jones) when one of the doors is opened.

MAY 23, 7PM. PORTRAIT OF MALKA SAFRO, by Henry Flynt, performed by him on violin.

MAY 30-JUNE 5: THE STORE BY JOHN & YOKO + FLUXFACTORY

1. machine devouring deposited objects,
2. crying machine dispensing tears,
3. machine dispensing sky (air (all 3 by Yoko Ono),
4. change machine dispensing metal slugs (fake coins for a penny) (John Lennon),
5. change machine dispensing pen for a dime (G.M. 1951),
6. drink dispenser dispensing drink with water soluble or leaking cup (G.M.),
7. nut dispenser dispensing into palm
8. loose sand or glue or an endless string (G. Maciunas),
8. Cigarette dispenser dispensing cigarettes with rope, dried fruit, sawdust & other fillin
9. perfume dispenser dispensing various strange scents and smokes (Yoshimasa Wada),
10. rain machine (Ayo)

Sale of body accessories: *halos, horns, 3rd eyes, tails, hoofs, skin blemishes, scars, etc. (Yoko Ono)*

Sale of Flux-shop products: *games, puzzles, jokes, gags, relics, foods, drinks, drugs, sports, playing cards, furniture, films, music boxes and machines, postage stamps, envelopes, maps, atlases, tattoos, posters, boxes, books, clocks, etc.*

JUNE 6-12: EXAMINATION BY JOHN & YOKO + FLUXSCHOOL

Various questions, lectures and other possible and impossible tasks submitted to participants in a classroom environment.

(George Brecht, Robert Filliou, Bici Hendricks, Geoff Hendricks, Henry Flynt, John Lennon, George Maciunas, Yoko Ono, Ben Patterson, Mieke Shiomi, Ben Vautier, Bob Watts.)

FOR FURTHER INFORMATION CALL: 966 6986 OR 925 7360



The Museum of Modern Art Archives, NY	Collection:	Series.Folder:
	Silverman Fluxus Archives	I.929

FLUXFEST PRESENTATION OF JOHN LENNON & YOKO ONO + \* 1 TO 8PM, AT JOE JONES STORE, 18 N. MOORE ST. (AT CANAL  
OPENING: APR. 11, 4PM. GRAPEFRUIT FLUX-BANQUET: grapefruit hors d'oeuvre, grapefruit soup, grapefruit dumplings, grapefruit  
mashed potatoes, grapefruit rice stuffing, grapefruit pancakes, grapefruit icecream, grapefruit wine, grapefruit cocktail, etc. (by Flux-chefs)

APR. 11-17: DO IT YOURSELF. BY JOHN & YOKO + EVERYBODY

1. Painting to be stepped on, (Yoko Ono '61) ink pad as door mat.
2. Painting to hammer a nail (Yoko Ono '61)
3. 2 Eggs (John Lennon '70,
4. Flux-eggs (G.M.) eggs filled with paint & to be thrown against wall.
5. Draw Circle painting (Yoko Ono '64)
6. Graffiti wall
7. Kitchen Piece (Yoko Ono '60) painting to wipe hands and floor with.
8. Osmosis (G.M. '60) india ink onto puddle of water.

APR. 18-24: TICKETS BY JOHN LENNON + FLUXTOURS

Selling to the public various tickets: desolate, unknown, funny 7 distant places (\$1 to \$300 [for Siberia]), Chinese theatre, sky tours, abandon  
buildings & narrow streets (10¢) (John Lennon); tickets to visit famous people (Y. Wada); 100 tickets to same seat, same day show (10¢)  
(Ben Vautier); tickets to locked up theatre (ben Vautier); outdated tickets (10¢) (G.M.). Also available will be lottery tickets to win tickets.

APR. 25-MAY 1: MEASURE BY JOHN & YOKO + HI RED CLINIC + FLUXDOCTORS (by Hi Red Center unless noted otherwise)

Various measurements are taken of each visitor by white coated attendants in a clinic environment: head volume, mouth, palm, pocket  
capacity, extended tongue length, hair strength, maximum kick; by Bob Watts: shoe/foot difference, inflated cheek width, temperature inside  
shoe or pocket, weight of pocket fuzz; by G. Maciunas: forefinger punch strength, kick strength, hand grip strength (crushing egg), vision  
above forehead, saliva or tear production, vision with wrong spectacles, smell, pain sensitivity, number of hairs in nostril, weight with one foot  
off the scale, minimum sway, stomach elasticity, capacity to shrink or expand; by Brian Lane: distance to blow out candle, X-ray vision;  
by Joe Jones: electric chair to measure electric conductivity and sound sensitivity (in window); by Yoko Ono: distance from the store to  
the nearest water; by John Lennon: distance from the nearest water to the store. (\$1 ADMISSION CHARGE)

MAY 2-8: BLUE ROOM BY JOHN & YOKO + FLUXLIARS (visitors should be dressed in white)

- Entire room (floor, walls, ceiling), exterior (door & window), and interior furnishings are to be white.
1. soft rubber ball with sign: This sphere will be a sharp point when it gets to the far side of the room in your mind. (Yoko Ono '64)
  2. an upright needle with sign: Forget it. (Yoko Ono) another one with sign: Needle (John Lennon, 1970)
  3. A cup on a table with sign:  
Not to be appreciated until it's broken, (Yoko Ono '66). another one with sign: Mend, (Yoko Ono '66)
  4. A very large box with sign:  
This is not here (Yoko Ono '67)
  5. window sign: This window is 2000ft wide (Yoko Ono '67), also This window is 5ft wide (John Lennon '67)
  6. Long straight line with sign: This line is a part of a large sphere, a straight line exists only in your mind, (Yoko Ono, 1966 & 70)
  7. Other interior signs: Stay until the room is blue (Yoko Ono '66); Do not disturb (John Lennon '70); Use ashtray for ashes (Yoko Ono '66)
  8. Signs by George Brecht (1961): No Smoking, Exit (on blank wall), Entry (on exit), forget this, listen, location, silence (at exit),  
middle (at edge of room), day/night (at night/day).
  9. Exterior signs: spring, rain, sky, wind, etc. (according to weather) (Yoko Ono '67)
- Window display: 2 sets of 4 spoons, one set with sign: 3 spoons (Yoko Ono '67), and another with sign: 4 spoons (John Lennon, 1970)

MAY 9-15: WEIGHT & WATER BY JOHN & YOKO + FLUXFAUCET

Store floor flooded with water to about 1" height. Visitors either barefooted or provided with rubber boots with weights (Yoko + Maciunas)

- Various objects floating or sunk to the floor: 1. A dry sponge (Yoko + John, 1970); 2. A wet sponge (Yoko + John, 1970)  
3. Three Aqueous Events: ice, water, steam (George Brecht '60); 4. Symphony no. 3: in the water (George Brecht, 1964)  
5. 10 look-alike boxes of different weights, from light, floating on the surface, to heavy ones glued to the floor. (Yoko + Takako Saito)

Window display: Drip Music (George Brecht, 1959) Automatic drip with amplified sound of the drip, (realized by Joe Jones)

MAY 16-22: CAPSULE BY JOHN & YOKO + FLUX SPACE CENTER (\$1 ADMISSION CHARGE)

- A 3ft cube enclosure (capsule) having various film loops projected on its 3 walls, ceiling and floor to a single viewer inside, about 8 minutes.
1. transition from small to large screens;
  2. single frame exposures of Sears Catalogue pages (both by Paul Sharits, 1966)
  3. transition from white to black (George Brecht, 1965)
  4. linear fall;
  5. linear turn (carrousel fashion) (both by G. Maciunas, 1966)
  6. transition through color scale (Ayo, 1969);
  7. No. 4 (close up of walking nude buttock) (Yoko Ono, 1966)
  8. Flicker (J. Cavanaugh, 1965)
  9. clouds (Geoff Hendricks, 1970);
  10. slide projection of: diffusion and osmosis of solvents (G. Maciunas, 1969)

MAY 23-29: PORTRAIT OF JOHN LENNON AS A YOUNG CLOUD BY YOKO ONO + EVERYPARTICIPANT

A 6ft x 10ft wall of 100 drawers (containing more boxes), and doors, all empty inside except one with a microscope entitled: John's smile.  
Musical portrait of John Lennon (by Joe Jones) when one of the doors is opened.

MAY 23, 7PM. PORTRAIT OF MALKA SAFRO, by Henry Flynt, performed by him on violin.

MAY 30-JUNE 5: THE STORE BY JOHN & YOKO + FLUXFACTORY

Coin operated vending machines: 1. machine devouring deposited objects, 2. crying machine dispensing tears, 3. machine dispensing sky (air  
all 3 by Yoko Ono), 4. change machine dispensing metal slugs (fake coins for a penny) (John Lennon), 5. change machine dispensing penny  
for a dime (G.M. 1951), 6. drink dispenser dispensing drink with water soluble or leaking cup (G.M.), 7. nut dispenser dispensing into palm  
loose sand or glue or an endless string (G. Maciunas), 8. Cigarette dispenser dispensing cigarettes with rope, dried fruit, sawdust & other fillin.  
9. perfume dispenser dispensing various strange scents and smokes (Yoshimasa Wada), 10. rain machine (Ayo)  
Sale of body accessories: halos, horns, 3rd eyes, tails, hooft, skin blemishes, scars, etc. (Yoko Ono)  
Sale of Flux-shop products: games, puzzles, jokes, gags, relics, foods, drinks, drugs, sports, playing cards, furniture, films, music boxes and  
machines, postage stamps, envelopes, maps, atlases, tattoos, posters, boxes, books, clocks, etc.

JUNE 6-12: EXAMINATION BY JOHN & YOKO + FLUXSCHOOL

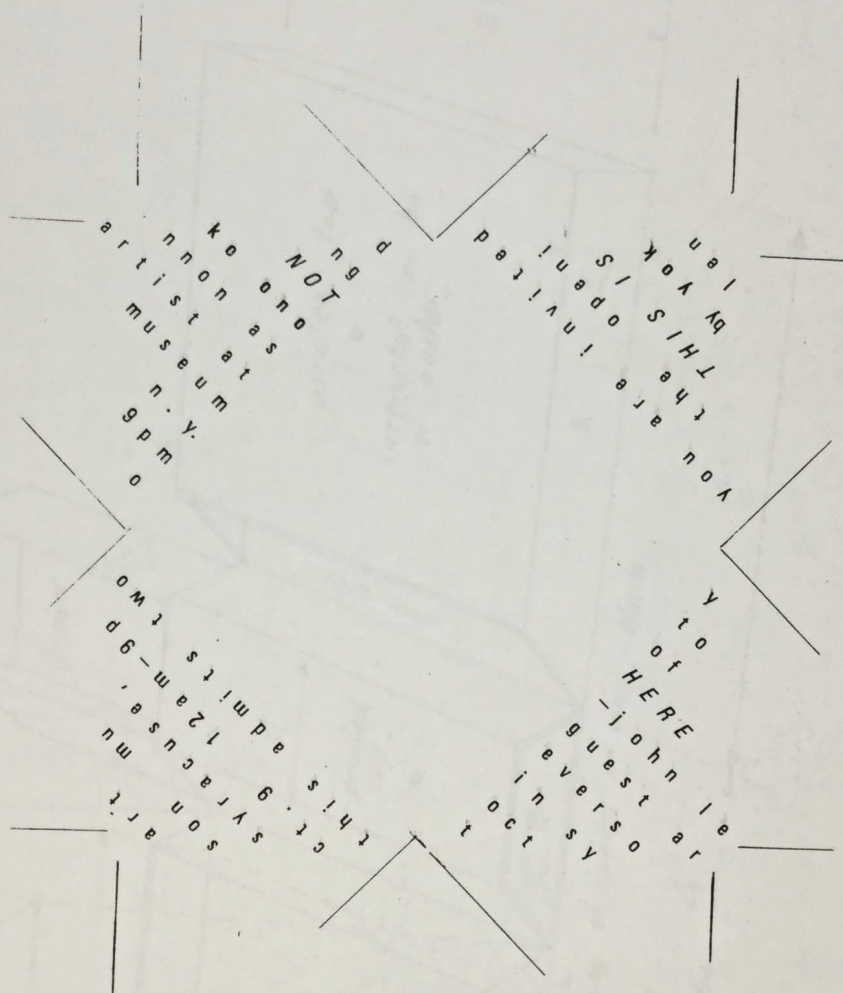
Various questions, lectures and other possible and impossible tasks submitted to participants in a classroom environment.  
(George Brecht, Robert Filliou, Bici Hendricks, Geoff Hendricks, Henry Flynt, John Lennon, George Maciunas, Yoko Ono, Ben Patterson,  
Mieko Shiomi, Ben Vautier, Bob Watts.)

FOR FURTHER INFORMATION CALL: 966 6986 OR 925 7360



FOR STUDY PURPOSES ONLY. NOT FOR REPRODUCTION.

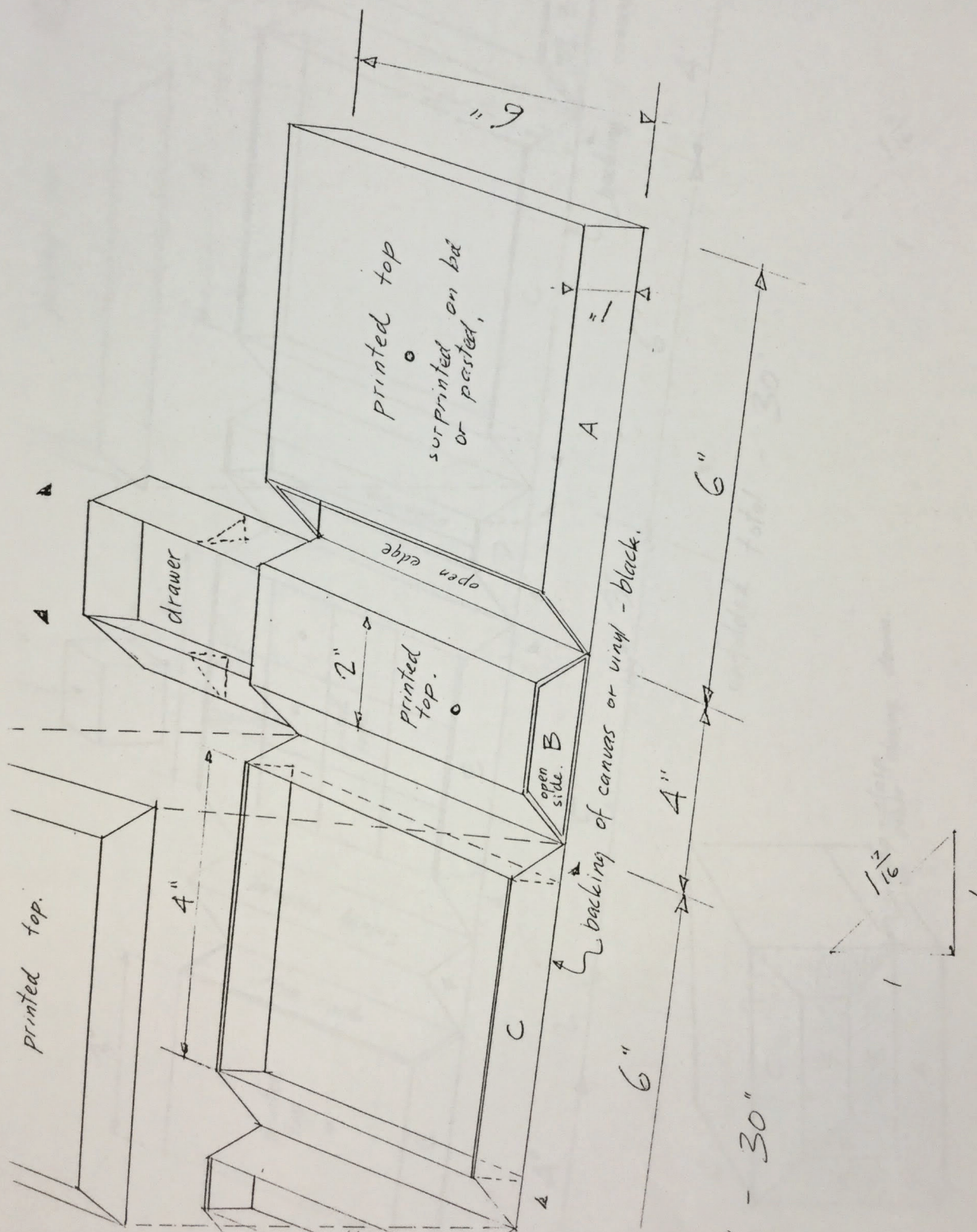
The Museum of Modern Art Archives, NY	Collection:	Series.Folder:
	Silverman Fluxus Archives	I.929





FOR STUDY PURPOSES ONLY. NOT FOR REPRODUCTION.

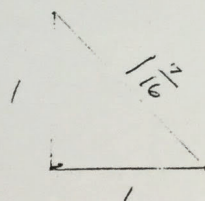
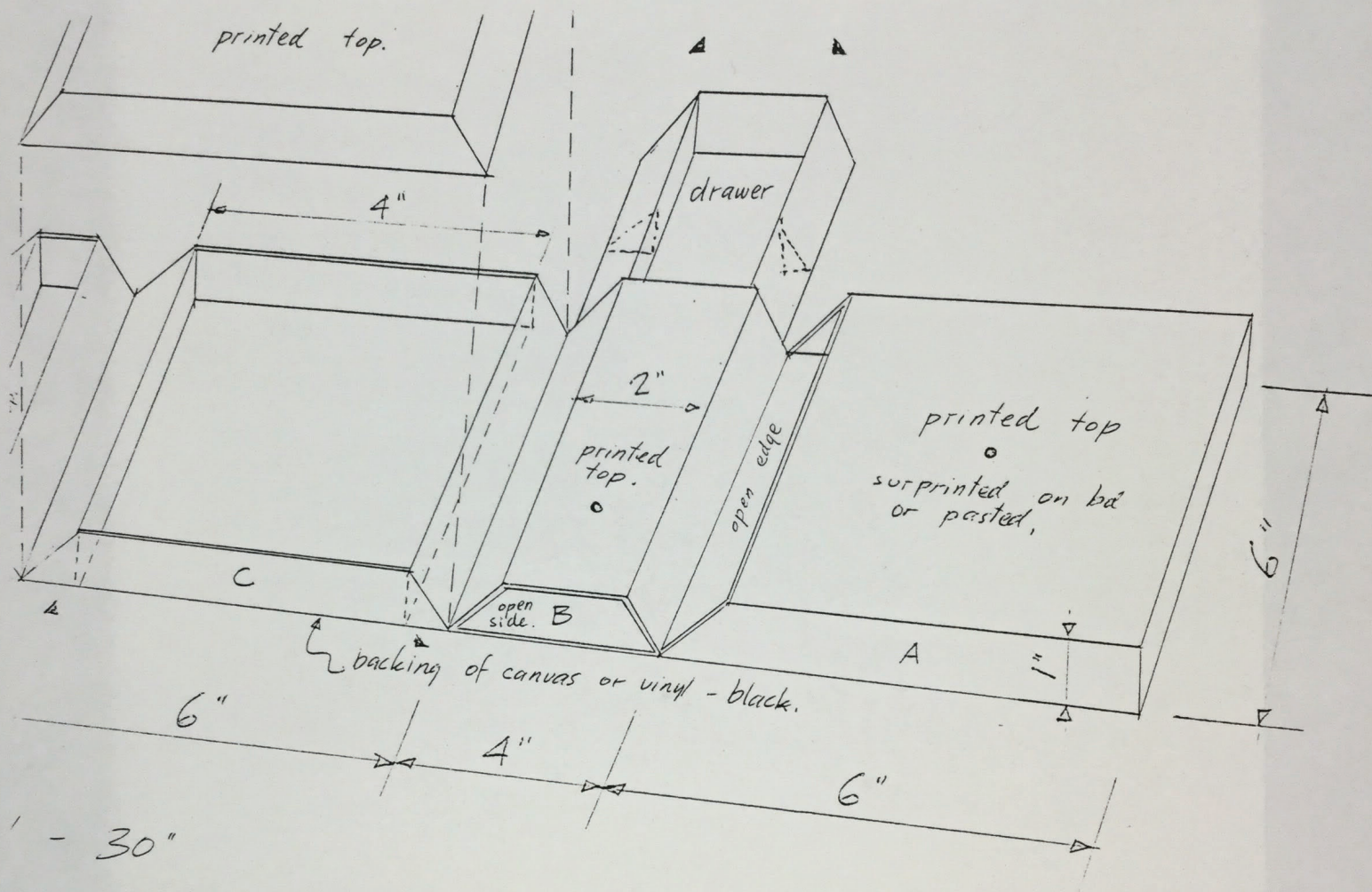
The Museum of Modern Art Archives, NY	Collection:	Series.Folder:
	Silverman Fluxus Archives	I.929





FOR STUDY PURPOSES ONLY. NOT FOR REPRODUCTION.

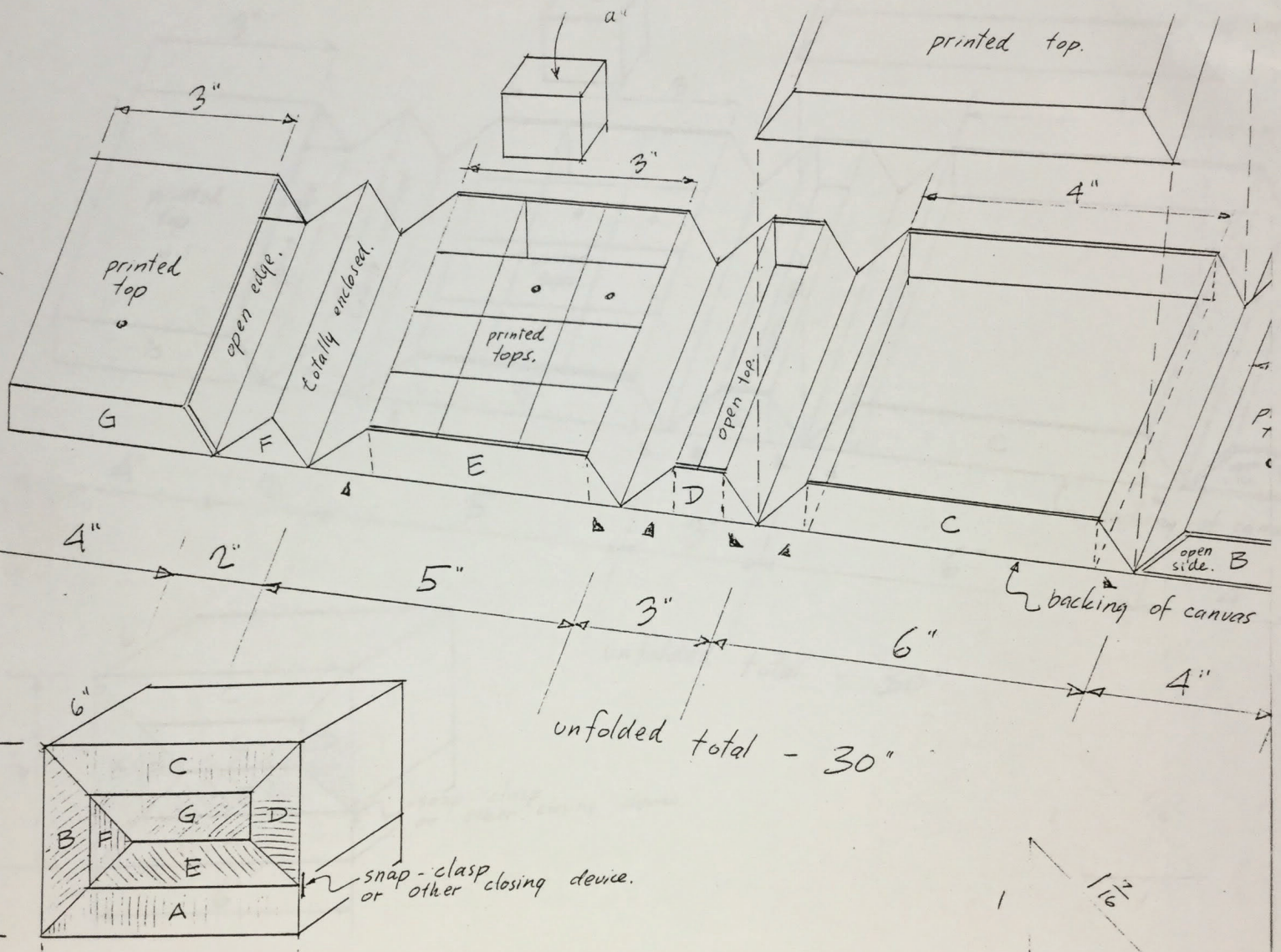
The Museum of Modern Art Archives, NY	Collection:	Series.Folder:
	Silverman Fluxus Archives	I.929





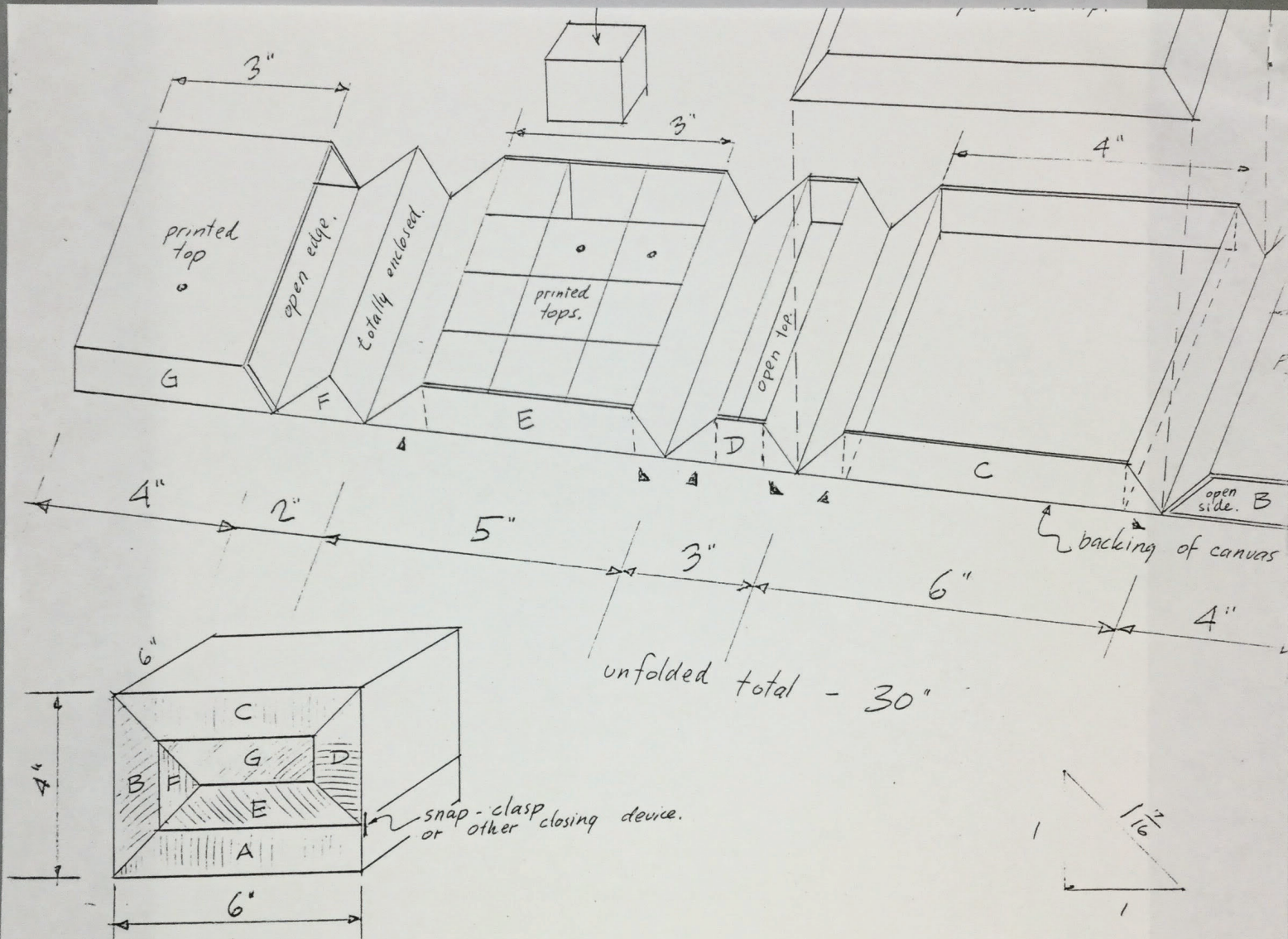
FOR STUDY PURPOSES ONLY. NOT FOR REPRODUCTION.

The Museum of Modern Art Archives, NY	Collection:	Series.Folder:
	Silverman Fluxus Archives	I.929





The Museum of Modern Art Archives, NY	Collection:	Series.Folder:
	Silverman Fluxus Archives	I.929





The Museum of Modern Art Archives, NY	Collection:	Series.Folder:
	Silverman Fluxus Archives	I.929

# JOKO JUKE JOINT PRELIMINARY PLAN

## CAPSULE DISPENSERS

- 1 air
- 1 tear
- 1 acorn
- 1 catshit

## 3 STAMP DISPENSERS

- 1 metal slug or short change
- 4 tickets (12 different kinds)
- 3 island (lennonland) post (9 different kinds)

## OBJECT DISPENSERS

- 1 plastic gloves
- 10 rubber stamps
- 1 white chess pocket set
- 1 smile box
- 1 danger box
- 1 listen box
- 2 T shirts
- 8 flux-objects

## POSTCARD-CARD DISPENSERS

- 1 JL satyr
- 1 YO to see the sky
- 5 part paintings
- 10 event cards

## DRINK DISPENSERS

- 1 Lennonade in leaking-disintegrating cup
- 1 fluxdrink (tea with salt)

## VIEWERS

- 2 mutoscopes by JL (distant and near)
- 4 film loop viewers (bottoms, legs, fly, clock)
- 2 speeded up film viewers (Apotheosis, Erection)
- 1 shadow box
- 1 sizes
- 2 reclining nudes
- 1 water clock
- 1 picture clock

## SOUND DISPENSERS

- 1 juke box - wrong selections
- 1 Joe Jones orchestra

## GAMES

- 1 pinball machine
- 2 carousel horses
- 2 ping-pong (against wall) corrugated, racket with hole
- 1 shooting gallery (hitting funny objects)
- 1 driving tester (misalligned wheel)

## TURNSTILES TO SEPARATE ROOMS

- 6th dimention - tactile room
- Do It Yourself room
- Corridor of doors - Port of LJ as a young cloud maze
- Ayo's floor variations (combine with maze?)
- Weight room
- Upside down room
- Half room

APPROXIMATE COST ESTIMATE

Monthly maintenance costs:

ground floor maintenance (to co-op) \$250/ month

maintenance man and guard \$250/ month

TOTAL MONTHLY MAINT. \$500

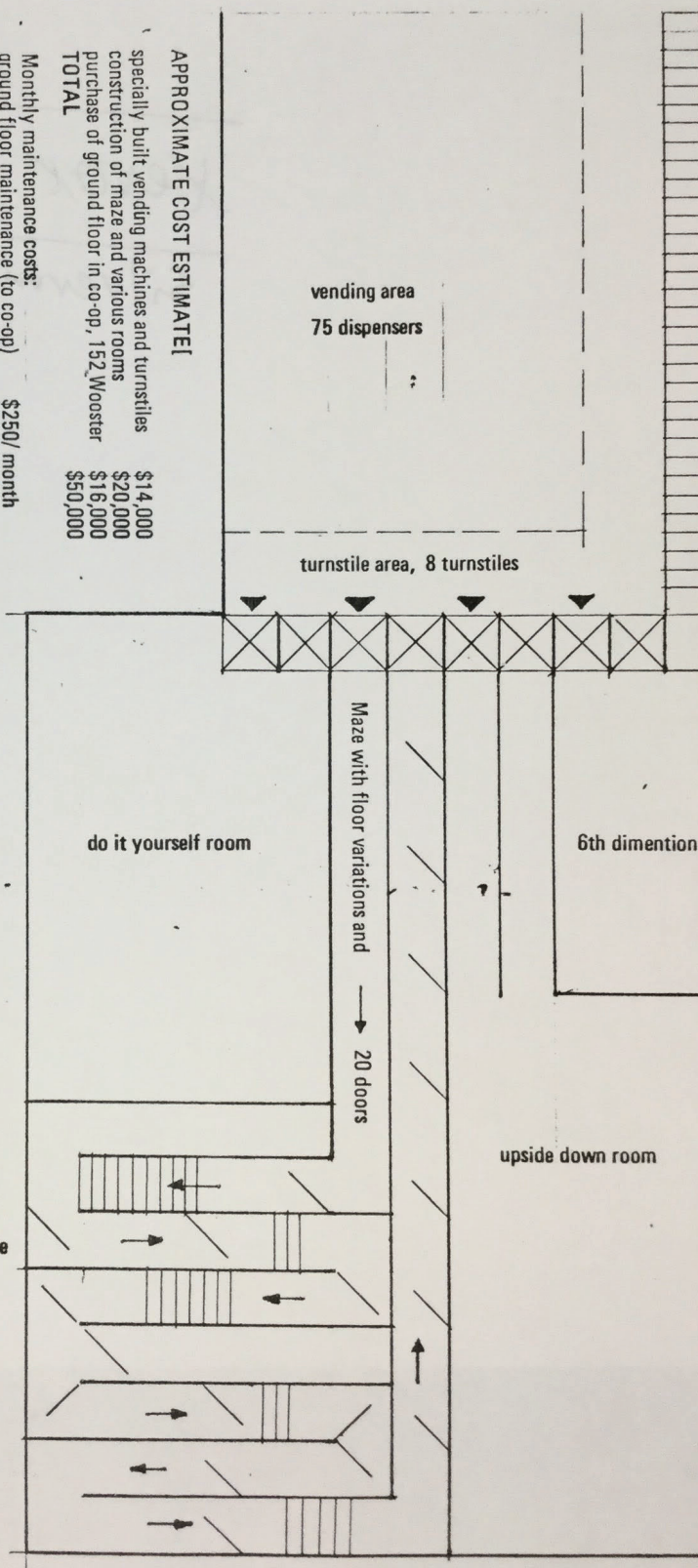
Monthly maintenance costs:

specialty built vending machines and turnstiles \$14,000

construction of maze and various rooms \$20,000

purchase of ground floor in co-op, 152 Wooster \$16,000

TOTAL \$50,000





FOR STUDY PURPOSES ONLY. NOT FOR REPRODUCTION.

The Museum of Modern Art Archives, NY	Collection:	Series.Folder:
	Silverman Fluxus Archives	I.929

XEROX COPY

Silverman Fluxus Collection