

## **CONDITIONS OF USE FOR THIS PDF**

The images contained within this PDF may be used for private study, scholarship, and research only. They may not be published in print, posted on the internet, or exhibited. They may not be donated, sold, or otherwise transferred to another individual or repository without the written permission of The Museum of Modern Art Archives.

When publication is intended, publication-quality images must be obtained from SCALA Group, the Museum's agent for licensing and distribution of images to outside publishers and researchers.

If you wish to quote any of this material in a publication, an application for permission to publish must be submitted to the MoMA Archives. This stipulation also applies to dissertations and theses. All references to materials should cite the archival collection and folder, and acknowledge "The Museum of Modern Art Archives, New York."

Whether publishing an image or quoting text, you are responsible for obtaining any consents or permissions which may be necessary in connection with any use of the archival materials, including, without limitation, any necessary authorizations from the copyright holder thereof or from any individual depicted therein.

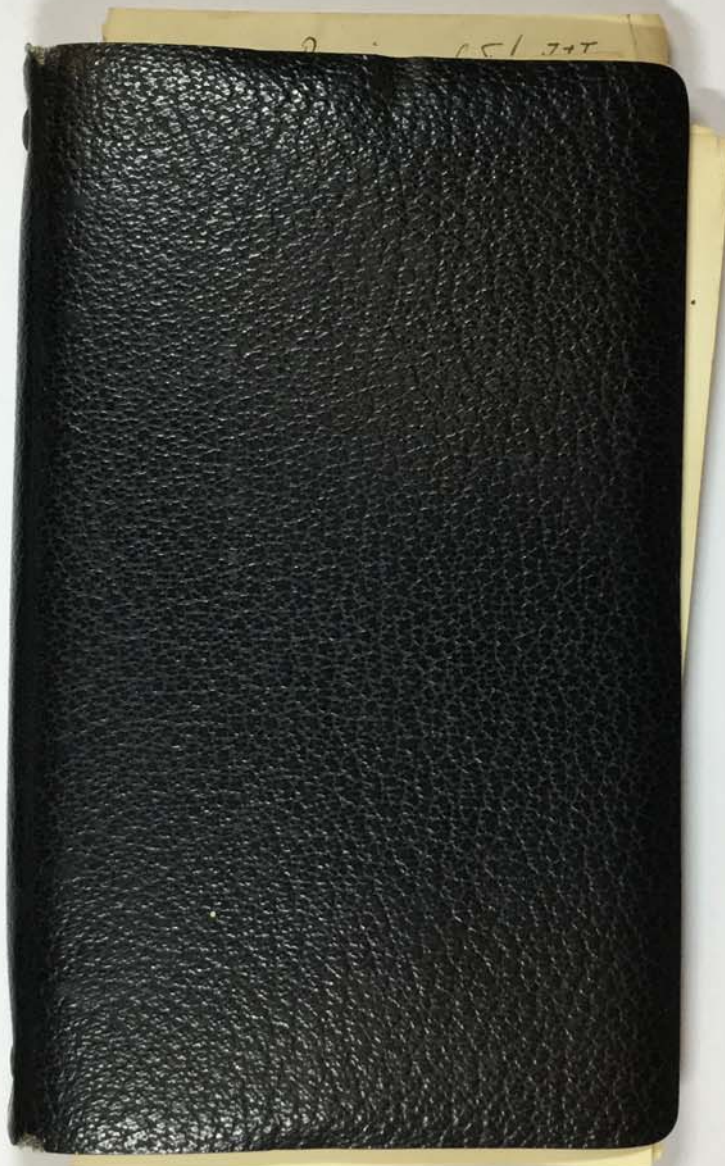
In requesting and accepting this reproduction, you are agreeing to indemnify and hold harmless The Museum of Modern Art, its agents and employees against all claims, demands, costs and expenses incurred by copyright infringement or any other legal or regulatory cause of action arising from the use of this material.

### **NOTICE: WARNING CONCERNING COPYRIGHT RESTRICTIONS**

The copyright law of the United States (Title 17, United States Code) governs the making of photocopies or other reproductions of copyrighted material. Under certain conditions specified in the law, libraries and archives are authorized to furnish a photocopy or other reproduction. One of these specified conditions is that the photocopy or reproduction is not to be "used for any purpose other than private study, scholarship, or research." If a user makes a request for, or later uses, a photocopy or reproduction for purposes in excess of "fair use," that user may be liable for copyright infringement.

FOR STUDY PURPOSES ONLY. NOT FOR REPRODUCTION.

The Museum of Modern Art Archives, NY	Collection:	Series.Folder:
	AHB	XIII.38



FOR STUDY PURPOSES ONLY. NOT FOR REPRODUCTION.

The Museum of Modern Art Archives, NY	Collection:	Series.Folder:
	AMB	XIII.38



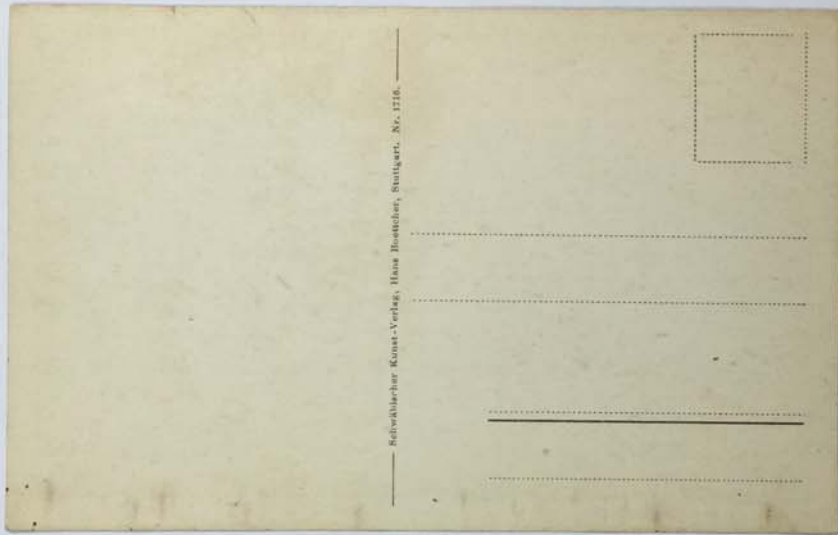
FOR STUDY PURPOSES ONLY. NOT FOR REPRODUCTION.

The Museum of Modern Art Archives, NY	Collection:	Series.Folder:
	AHB	XIII.38



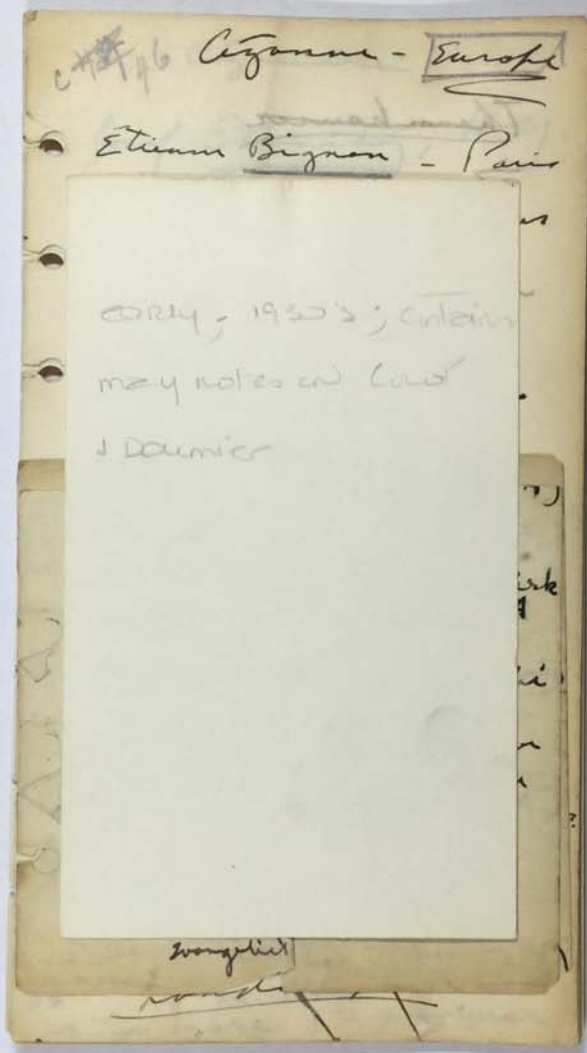
FOR STUDY PURPOSES ONLY. NOT FOR REPRODUCTION.

The Museum of Modern Art Archives, NY	Collection:	Series.Folder:
	AMB	XIII.38



FOR STUDY PURPOSES ONLY. NOT FOR REPRODUCTION.

The Museum of Modern Art Archives, NY	Collection:	Series.Folder:
	AMB	XIII.38



FOR STUDY PURPOSES ONLY. NOT FOR REPRODUCTION.

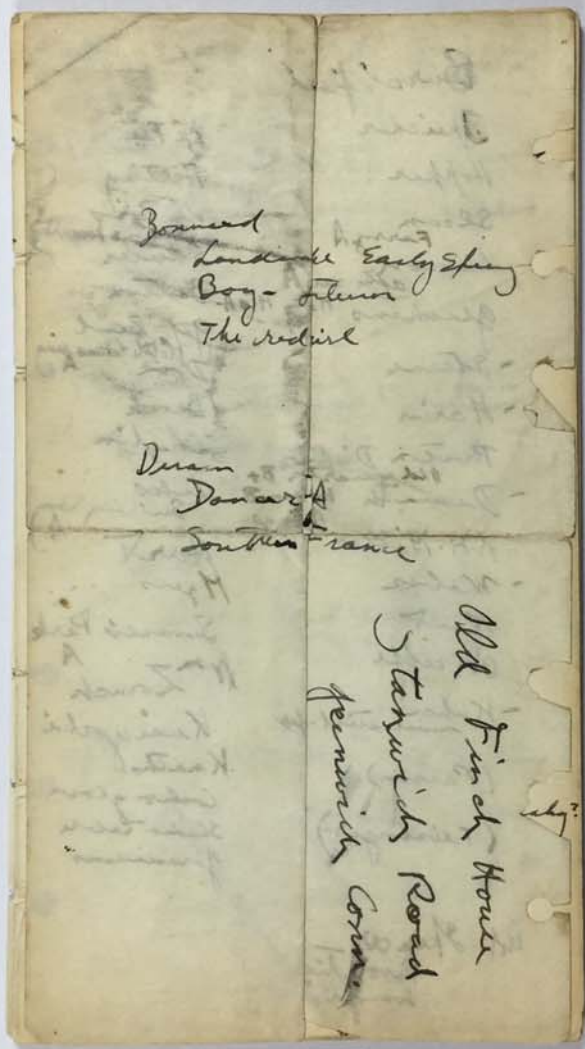
The Museum of Modern Art Archives, NY	Collection:	Series.Folder:
	AMB	XIII.38

Burchfield  
Speicher  
Hopper  
Sloan  
Ferry A  
Lawson  
after rain A  
glaciers Hain H10A  
- Sterne  
- Harris  
Princeton Dickson  
old quarter B+  
- Demuth Haines B  
K.H. Miller  
- Weber  
Kand  
O'Keeffe  
- Kuhn  
matt still - 44  
(Pascin)  
(Feininger)  
Ed. Spencer -  
Revolution  
Zwergelint

Mc Fee  
Hartley  
du Bois  
Feyen + Macca  
Schuler  
Benton  
G. Paul  
Little Circus painting  
Dove  
Brook  
Chapin  
Lukas  
Sullivan (boy A)  
Hart  
Myers  
Seward's Park  
A  
Zorach  
Kuniyoshi  
Knaths  
Cocher glow  
Studio Lake  
germanicus

FOR STUDY PURPOSES ONLY. NOT FOR REPRODUCTION.

The Museum of Modern Art Archives, NY	Collection:	Series.Folder:
	AMB	XIII.38



FOR STUDY PURPOSES ONLY. NOT FOR REPRODUCTION.

The Museum of Modern Art Archives, NY	Collection:	Series.Folder:
	AHB	XIII.38

c. 1876 Ceyenne - Europe

- Etienne Bignou - Paris  
Nature morte apples  
✓
- Paul Roubery - Paris  
Reliquin  
✓  
St. Victoire  
✓  
Self + Paul Alexis
- Private Coll. Paris  
~~Nature morte Strandy?~~  
~~landscape with ♂~~  
~~landscape~~

FOR STUDY PURPOSES ONLY. NOT FOR REPRODUCTION.

The Museum of Modern Art Archives, NY	Collection:	Series.Folder:
	AHB	XIII.38

Thannbauer  
Thannbauer  
3 Gunguiser pro. coll.  
in Berlin.  
Churchill  
Self with Hat  
Barrade

FOR STUDY PURPOSES ONLY. NOT FOR REPRODUCTION.

The Museum of Modern Art Archives, NY	Collection:	Series.Folder:
	AHB	XIII.3B

Cézanne

Josef Stronach, N.Y.

Man under tree A  
✓

Still life (Monet's) A  
✓

Landscape B+  
✓

h. Lewinsohn

L'Oncle Dominique  
early C+

L'Estaque B+

Mme. Cézanne B

vr ph. Rein.  
→ Two more! - good year

FOR STUDY PURPOSES ONLY. NOT FOR REPRODUCTION.

The Museum of Modern Art Archives, NY	Collection:	Series.Folder:
	AHB	XIII.38

Cézanne

Mrs Lizzie Bliss N.Y.

Blue landscape ✓ A-

Chopard in study ✓ A-

Self - early ✓ B

Standing nude (✓) A-

Kelkian  
Large still life ✓ A

Landscape early ✓ A-

Smaller still life ✓ B+

Home Cézanne ✓ A-

Dark oranges ✓

FOR STUDY PURPOSES ONLY. NOT FOR REPRODUCTION.

The Museum of Modern Art Archives, NY	Collection:	Series.Folder:
	A113	X111.38

Cézanne  
Conger Goodyear N.Y.  
Man in Blue B+  
Nature/Note A  
Retrospective B  
John Spaulding Boston  
Rix C+  
Still-life B+  
Duncan Phillips  
Mont St-Victoire A  
Sally

FOR STUDY PURPOSES ONLY. NOT FOR REPRODUCTION.

The Museum of Modern Art Archives, NY	Collection:	Series.Folder:
	AHB	XIII.38

Cézanne

Chutes Dale N.Y.

Louis Guillaume B -

Nature Morte A  
✓

Estaque B

Jeune homme B

John Nicholas Brown Boston

Landscape B -

Foggy Sea

FOR STUDY PURPOSES ONLY. NOT FOR REPRODUCTION.

The Museum of Modern Art Archives, NY	Collection:	Series.Folder:
	AHB	XIII.38

Cyganer  
Corn. J Sullivan N.Y.  
Mme Cyganer Quim B+  
✓  
Self B  
✓  
Two Sisters  
↳ Wintertown Burlington  
Apples A-  
Mde Cyganer  
Wilderness N.Y.  
(Environ de Paris  
Fogg 5a  
?  
.

FOR STUDY PURPOSES ONLY. NOT FOR REPRODUCTION.

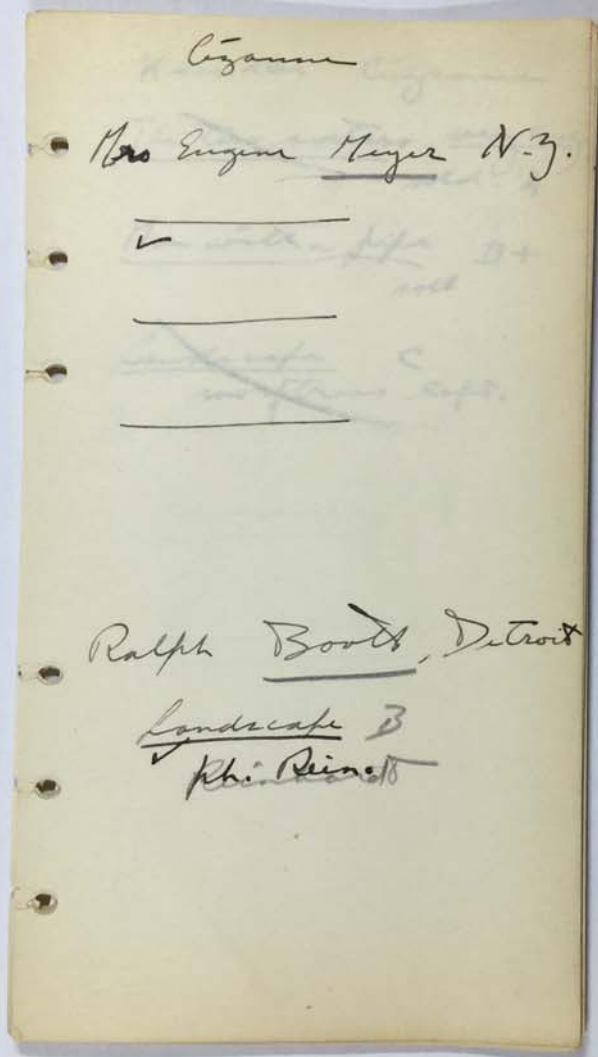
The Museum of Modern Art Archives, NY	Collection:	Series.Folder:
	AHB	XIII.38

Chicago  
Art Institute Chicago  
Ryerson's landscape A  
  
Still-life. Burtin A-  
  
Etha  
Miss Clairibel Cone Baltimore  
Mr St. Victoire  
  
Ralph Bond Detroit  
Wm Van Horn Montreal  
Heady Women  

---

FOR STUDY PURPOSES ONLY. NOT FOR REPRODUCTION.

The Museum of Modern Art Archives, NY	Collection:	Series.Folder:
	AHB	XIII.38



FOR STUDY PURPOSES ONLY. NOT FOR REPRODUCTION.

The Museum of Modern Art Archives, NY	Collection:	Series.Folder:
	AHB	XIII.38

Knoedler Cigarettes  
~~The two sisters very early~~ sold: A  
Man with a pipe B+  
roll  
~~Landscape C~~  
row of trees left:  
Landscape  
Landscape of gold

FOR STUDY PURPOSES ONLY. NOT FOR REPRODUCTION.

The Museum of Modern Art Archives, NY	Collection:	Series.Folder:
	A113	X111.38

Cyprus  
F.H. Hirschland  
Garden 1886 A  
Dr Harry Bakwin  
Landscape  
Figure 1 girl

FOR STUDY PURPOSES ONLY. NOT FOR REPRODUCTION.

The Museum of Modern Art Archives, NY	Collection:	Series.Folder:
	A113	X111.38

Guizelin  
Chester H Johnson Chicago  
Still-life - Tahiti B  
La femme en blanc A -  
Nature morte A -  
Bathers B

FOR STUDY PURPOSES ONLY. NOT FOR REPRODUCTION.

The Museum of Modern Art Archives, NY	Collection:	Series.Folder:
	AHB	XIII.38

*Janguin*

• *Adolph Lewisohn N.J.*

• *Breton? Landscape B-*

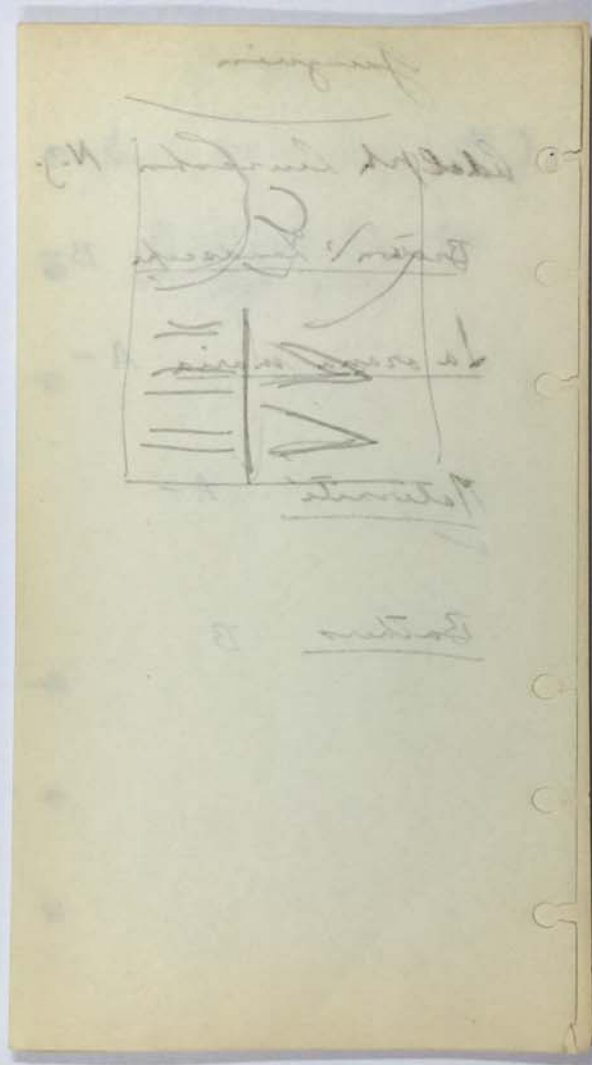
• *La orana maria A-*

✓ *Maternité A-*

• *Bathers B*

FOR STUDY PURPOSES ONLY. NOT FOR REPRODUCTION.

The Museum of Modern Art Archives, NY	Collection:	Series.Folder:
	AHB	XIII.38



FOR STUDY PURPOSES ONLY. NOT FOR REPRODUCTION.

The Museum of Modern Art Archives, NY	Collection:	Series.Folder:
	AHB	XIII.38

Gauguin.

James W. Barney N 3.

Women of Arles A-

✓ de H.

William Holton,

Butter landscape

Duncan Phillips

Washington

Tahiti

FOR STUDY PURPOSES ONLY. NOT FOR REPRODUCTION.

The Museum of Modern Art Archives, NY	Collection:	Series.Folder:
	A113	X111.38

Gauguin  
Martin Ryerson, Chicago  
Devant la case B+  
(~~Portrait~~)  
Dog & jungle  
William Holston, Chicago  
Breton landscape  
Walter & Susan, N.J.  
Duncan Phillips  
Washington  
Tahiti (water color)  
Tahiti?  
Self portrait

FOR STUDY PURPOSES ONLY. NOT FOR REPRODUCTION.

The Museum of Modern Art Archives, NY	Collection:	Series.Folder:
	A113	XIII.38

Gauguin

Ralph Coe, Cleveland

Landscape A

Paul Rosenberg N.Y.

St. Christ Janner A

✓

Walter E Sachs, N.Y.

Still-life B-

Zouave (water color)

Self-portrait

FOR STUDY PURPOSES ONLY. NOT FOR REPRODUCTION.

The Museum of Modern Art Archives, NY	Collection:	Series.Folder:
	AMB	XIII.38

ganguein

Birch-Bartlett, Chicago

Mekana na Atua A

✓ Ph. Wn.

Museum Chicago

Women with ~~Eligance~~ Still life  
B

Worcester Museum

Emma Accroupie A-

✓ Ph. Wn.

Corneilus J Sullivan N.Y.

Dutton land C

Martinique land C+

FOR STUDY PURPOSES ONLY. NOT FOR REPRODUCTION.

The Museum of Modern Art Archives, NY	Collection:	Series.Folder:
	A113	X111.38

Junguis  
John Spaulding, Boston  
Still-life, flowers B  
✓  
  
Conger Goodyear N.J.  
Tahiti 99 A-  
made on wood  
Tahiti A  
✓  
  
Tahiti idyllic A-  
✓ Poem Barbara  
The L.L. Brown thing

FOR STUDY PURPOSES ONLY. NOT FOR REPRODUCTION.

The Museum of Modern Art Archives, NY	Collection:	Series.Folder:
	AMB	XIII.38

Jauguis

Mrs Q A Shew McKean  
Boston  
✓ Meyer & Hahn '89 A  
~~Self - A~~

Gilbert E. Fuller, Boston  
Autrefois B+ D+  
Sous les Pendans A

Mrs L.L. Coburn Chicago  
Self A  
Ph. D.

FOR STUDY PURPOSES ONLY. NOT FOR REPRODUCTION.

The Museum of Modern Art Archives, NY	Collection:	Series.Folder:
	AHB	XIII.38

Gauguin

Frank Jinn, Iceland

Te raa rahi '91 B

ph. ~~Rein.~~ Rein.

Joseph Winterbottom Burlington Vt

Portrait of Clovis early B-

Ph. Rein + Ka.

W.S. Stimmel, Pittsburgh

Self A-

ph. Rein.

✓

FOR STUDY PURPOSES ONLY. NOT FOR REPRODUCTION.

The Museum of Modern Art Archives, NY	Collection:	Series.Folder:
	AHB	XIII.38

45 Janguin Europe  
Paul Rosenberg.  
Les Mangoes ✓  
Peter Lind, '83 C  
Private collection, Paris  
Flowers  
Private collection, Berlin  
Flechtheim  
La Fille Bretonne ✓  
V

FOR STUDY PURPOSES ONLY. NOT FOR REPRODUCTION.

The Museum of Modern Art Archives, NY	Collection:	Series.Folder:
	AHB	XIII.38

Janguin

• Chester Dale N.Y.

• Breton land. '83 C

• Self '89 A interest  
✓ Portrait A

Fatale te mite '92 A

• Still-life '89 C

• Marie de Pouldu C+

FOR STUDY PURPOSES ONLY. NOT FOR REPRODUCTION.

The Museum of Modern Art Archives, NY	Collection:	Series.Folder:
	AHB	XIII.38

Jauguin  
Josef Stranek N.Y.  
Monlight in Sea '74  
Buton land. '88 B  
(clair de lune)  
Reverie A  
  
Drawing of Women A  
Somerset Maugham's door  
(Flowers) B-

FOR STUDY PURPOSES ONLY. NOT FOR REPRODUCTION.

The Museum of Modern Art Archives, NY	Collection:	Series.Folder:
	A113	X111.38

Jauguin

Josef Stranicky N.Y.

Monlight on sea '77  
Buton land. '88 B  
(Chairs de bois)

Reverie A

Drawing of Women A

Flowers B-

FOR STUDY PURPOSES ONLY. NOT FOR REPRODUCTION.

The Museum of Modern Art Archives, NY	Collection:	Series.Folder:
	AHB	XIII.38

August  
Minneapolis  
Moonlight on Sea '74  
ph. Kn.  
(Clair de lune)  
North End - 1917  
New York  
Somerset Maugham's door  
(glass painting) A-  
ph. Kn.  
Hawaii  
1916

FOR STUDY PURPOSES ONLY. NOT FOR REPRODUCTION.

The Museum of Modern Art Archives, NY	Collection:	Series.Folder:
	AMB	XIII.38

Knoc der Gauguin

Landscape - skating  
(early 80s)

Clavis - head - font  
partes.

Table head - Emile Gauguin

Martinique '87? Sullivan

Clair de Lune - '1874 ✓  
Minneapolis

Head of a Span D?

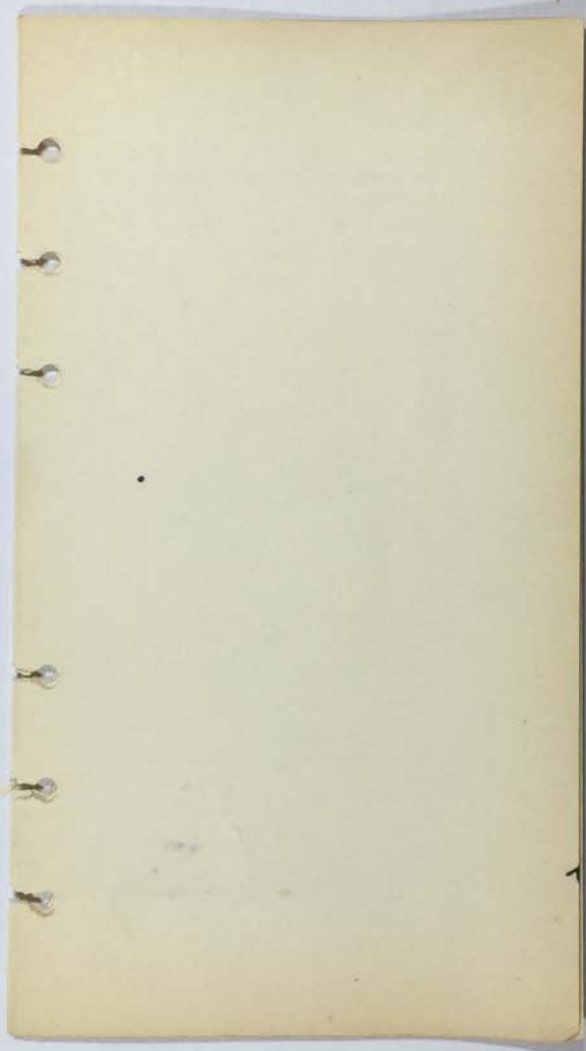
Somerset Maugham ✓

door - shell Maugham  
Stephen Hewes' doors

Abistonia Starke 206 W 13  
Chil. 1426

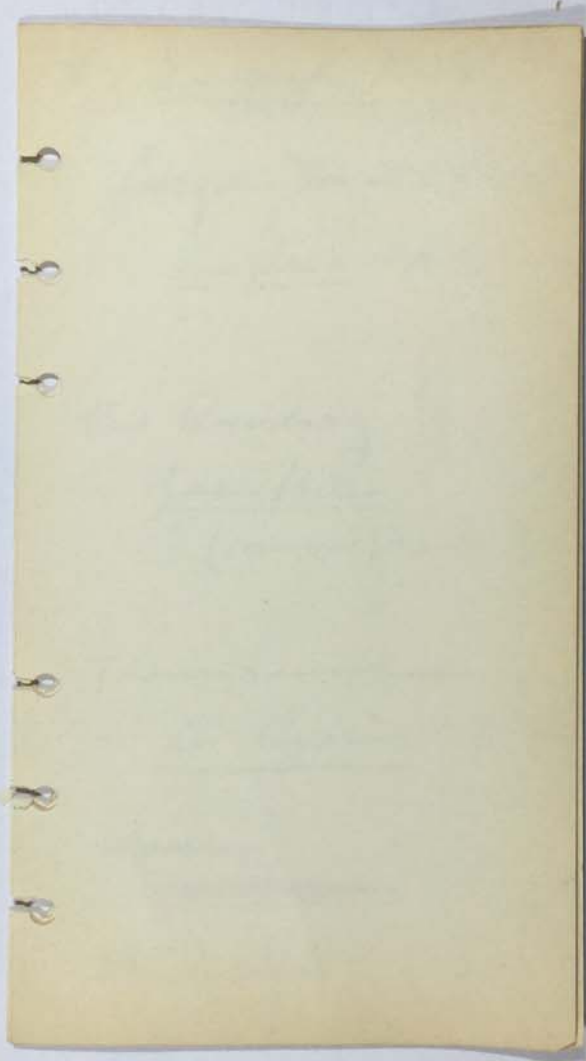
FOR STUDY PURPOSES ONLY. NOT FOR REPRODUCTION.

The Museum of Modern Art Archives, NY	Collection:	Series.Folder:
	AMB	XIII.38



FOR STUDY PURPOSES ONLY. NOT FOR REPRODUCTION.

The Museum of Modern Art Archives, NY	Collection:	Series.Folder:
	AMB	XIII.38



FOR STUDY PURPOSES ONLY. NOT FOR REPRODUCTION.

The Museum of Modern Art Archives, NY	Collection:	Series.Folder:
	AMB	XIII.38

Van Gogh 2  
Jacques Tardieu 1  
Les Deux A  
✓  
Paul Rosenberg  
Jacques Tardieu  
(Howard Chandler Christy)  
Therese Hansen  
Les Deux A  
✓  
Les Deux 2  
Les Deux 2  
André Coiffet 2  
et al.

FOR STUDY PURPOSES ONLY. NOT FOR REPRODUCTION.

The Museum of Modern Art Archives, NY	Collection:	Series.Folder:
	AHB	XIII.38

#21 Van Gogh Europe  
✓  
Jacques Doucet, Paris  
les Iris A  
✓  
Paul Rosenberg  
Jardin d'Arles  
✓ (Howard? Dachs?)  
Thannhauser  
les Cyprien A ?  
✓  
~~Kochler~~ ?  
~~Paul Simon~~ ?  
André  
les Iris ?

FOR STUDY PURPOSES ONLY. NOT FOR REPRODUCTION.

The Museum of Modern Art Archives, NY	Collection:	Series.Folder:
	AHB	XIII.38

de la Faillle ?  
H. van der Vegt  
Collection  
  
The Drawing  
of  
van der Vegt  
(H. van der Vegt)  
  
The Drawing  
of  
van der Vegt  
A. O.  
  
The Drawing  
of  
van der Vegt  
  
The Drawing  
of  
van der Vegt

FOR STUDY PURPOSES ONLY. NOT FOR REPRODUCTION.

The Museum of Modern Art Archives, NY	Collection:	Series.Folder:
	AHB	XIII.38

Van Gogh  
R. T. Paine II, Boston  
Le Postier B+  
✓  
Mrs William Clark N.Y.  
Still-life  
Chester Dale N.Y.  
Le Bébé de Roulin B1888  
~~Le Bébé de Roulin~~  
La Mousée A  
✓

FOR STUDY PURPOSES ONLY. NOT FOR REPRODUCTION.

The Museum of Modern Art Archives, NY	Collection:	Series.Folder:
	AHB	XIII.38

Van Gogh  
Boston  
John Spaulding ✓ NY  
~~La Berceuse B~~  
~~Street in Amoy B+~~  
Gilbert E. Fuller, Boston  
~~Sous Bois B~~  
~~Les Peccurs C~~  
~~Man with Pipe C~~

FOR STUDY PURPOSES ONLY. NOT FOR REPRODUCTION.

The Museum of Modern Art Archives, NY	Collection:	Series.Folder:
	AHB	X111.38

Beckmann  
Feininger  
Klee  
Nold  
Schmidt-R.  
Kirchner  
Dix  
Hofmann  
Koborscha  
Bauhaus  
Jan Tschichold

FOR STUDY PURPOSES ONLY. NOT FOR REPRODUCTION.

The Museum of Modern Art Archives, NY	Collection:	Series.Folder:
	AHB	XIII.38

Van Gogh

Cornelius J. Sullivan N.Y.  
Head of girl B  
✓

Keith McCleod, Boston  
The Ravine B+

Walter S. Brewster, Chicago  
Still-life B+  
✓ (restoration)

FOR STUDY PURPOSES ONLY. NOT FOR REPRODUCTION.

The Museum of Modern Art Archives, NY	Collection:	Series.Folder:
	AHB	XIII.38

Van Gogh

Prof. Stranahan N.Y.

Head of Boy c

Miss Edith Wetmore

Boats

Van Gogh  
Chester H. Johnson, Chi.

Sunset.

FOR STUDY PURPOSES ONLY. NOT FOR REPRODUCTION.

The Museum of Modern Art Archives, NY	Collection:	Series.Folder:
	AHB	XIII.38

Van Gogh

F.H. Hirschland N.Y.

Pond à la Casières A-

Tête à gazon

A.W. Barney, New York

Flowers B

Mrs Senator Wm A Clarke

Bull life

FOR STUDY PURPOSES ONLY. NOT FOR REPRODUCTION.

The Museum of Modern Art Archives, NY	Collection:	Series.Folder:
	AHB	XIII.38

Van Gogh.

Adolphe Lewinsohn N.Y.

L'Artésienne A-

Tête de garçon

~~Museum Buffalo~~

~~Paysage des environs~~

~~de St-Remy~~

Goodyer

<sup>Wm</sup>  
Dr Herman, Boston

Le champ de blé

de la F. 310 bis

Hitchcock

Alexander Smith

FOR STUDY PURPOSES ONLY. NOT FOR REPRODUCTION.

The Museum of Modern Art Archives, NY	Collection:	Series.Folder:
	AHB	X111.38

Van gogh

Conger Goodyear, N.J.

Maison de Craon A

~~The Mill B~~

Small landscape B

Flowers popping A

Birch-Barklee, Chicago

Van Gogh's room A

La Berceuse D

~~Montmartre~~ B

Drawings:

Miss Wetmore A

de Haan - 2 A, B

FOR STUDY PURPOSES ONLY. NOT FOR REPRODUCTION.

The Museum of Modern Art Archives, NY	Collection:	Series.Folder:
	AHB	XIII.38

Van Gogh  
A. P. Barnes Phila  
L'usine  
Le postier (poids fleurs)  
Le lupanar  
Nude (small)  
Le joueur  
Chauves au soleil

FOR STUDY PURPOSES ONLY. NOT FOR REPRODUCTION.

The Museum of Modern Art Archives, NY	Collection:	Series.Folder:
	AHB	XIII.38

Van Gogh.  
de la Faïence nos.  
not yet placed.

236 Bouquet des fleurs  
Berthelin to Knorrer  
to Scott & Fowles  
Barney

280 Fleurs des champs  
Goodyear ~~Barney~~

310 bis Le champ de blé  
Dr. Herman Borison

668 Les premiers pas  
Vieltoin to private American

769 Mlle. Ravoux (Mortiers exhibit)  
Van Gogh to Bongers to priv. Amer.  
Mrs Messers

FOR STUDY PURPOSES ONLY. NOT FOR REPRODUCTION.

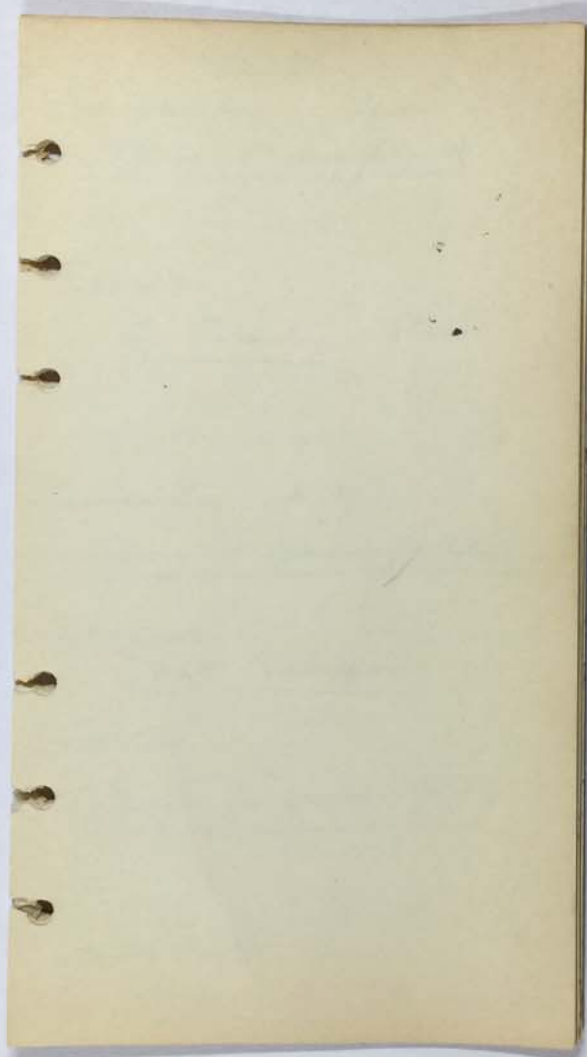
The Museum of Modern Art Archives, NY	Collection:	Series.Folder:
	AHB	XIII.38

Knorrer  
Van Gogh.  
Zinnias (sold?)  
Paysage (with dense clouds)  
✓ En Montmartre to Buisson  
Flowers in jug sold  
Landscape - sold  
Paysage aux bords d'Arles  
plowed field  
Flowers in vase  
Le Laboureur  
(plowman) sold  
Les Roses Knorrer  
Masterpieces XIX c. 1929  
No 3 Reid 1929



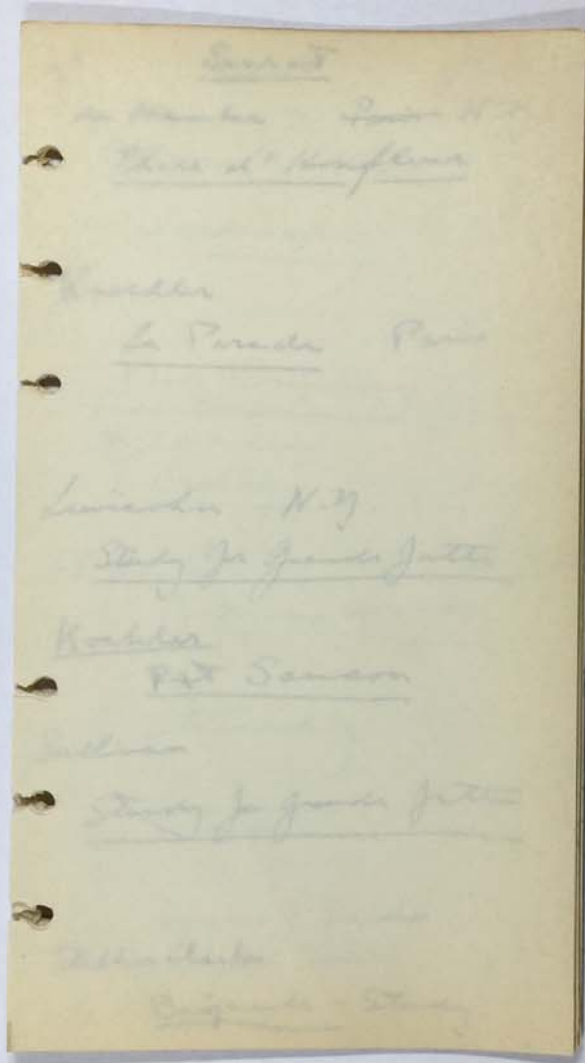
FOR STUDY PURPOSES ONLY. NOT FOR REPRODUCTION.

The Museum of Modern Art Archives, NY	Collection:	Series.Folder:
	AHB	XIII.38



FOR STUDY PURPOSES ONLY. NOT FOR REPRODUCTION.

The Museum of Modern Art Archives, NY	Collection:	Series.Folder:
	AHB	XIII.38



FOR STUDY PURPOSES ONLY. NOT FOR REPRODUCTION.

The Museum of Modern Art Archives, NY	Collection:	Series.Folder:
	AHB	XIII.38

5x Seurat  
de Hauke Paris N.Y.  
Phare d' Honfleur  
Landscapes  
Knodler  
La Parade Paris  
Paris  
Walden  
Lewisohn N.Y.  
Study for Grande Jatte  
Kochler  
Fox Sanson  
Sullivan  
Study for Grande Jatte  
Study for Grande Jatte  
Stephen Clark  
Baignade - Study

FOR STUDY PURPOSES ONLY. NOT FOR REPRODUCTION.

The Museum of Modern Art Archives, NY	Collection:	Series.Folder:
	AHB	XIII.38

*Surat*

1. *Duncan Phillips*  
Landscape

2. *Paul Rosenberg*  
*Private Collection (Paris?)*  
*Wildenstein*  
Crotoy

3. *Mrs Bliss*  
*Port-en-Bessin*

4. *J. Stankov*  
Plouzaner

5. *Mrs Howard Sachs*  
*2 cigar boxes.*  
*de Haanbe "* 3

FOR STUDY PURPOSES ONLY. NOT FOR REPRODUCTION.

The Museum of Modern Art Archives, NY	Collection:	Series.Folder:
	AHB	XIII.38

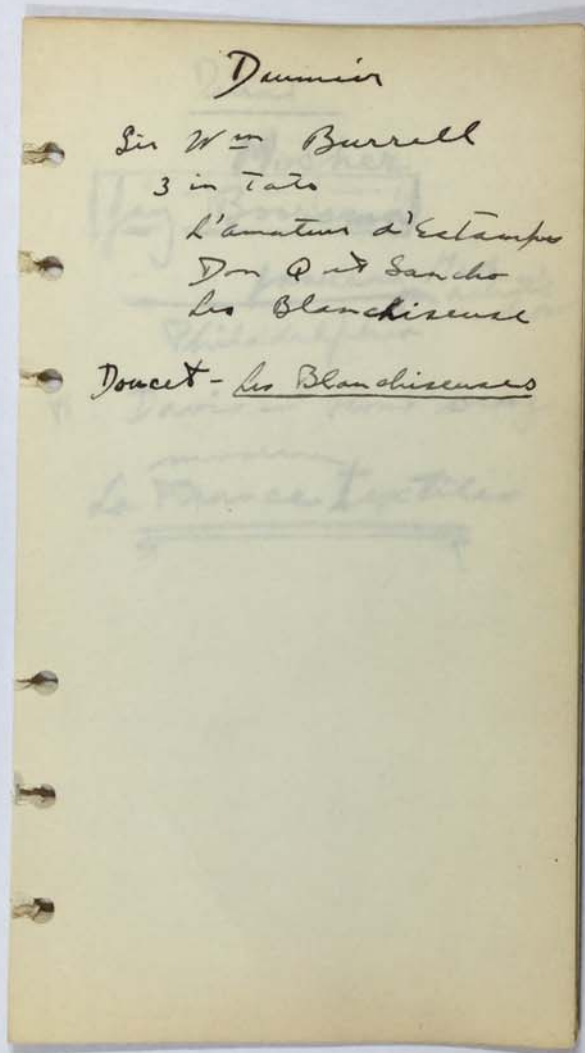
Knudler Seward

1. Grande Jatte - study A   
Sullivan V
2. Paysage - sketch (tiny)
3. Port-en-bassin mere basse A  
just Knudler Stock
4. Study for Grande Jatte  
man & ♀ pigeons
5. Le St. Cyrien
6. Study for Le Baigneur A  
Stephen Clark
7. Le Cassur de ferre B
8. Pêcheur B sold
9. Port-en-bassin ditout saills.  
B sold? Bliss
10. L'Île de la Grande Jatte A  
sold long study for landscape

4

FOR STUDY PURPOSES ONLY. NOT FOR REPRODUCTION.

The Museum of Modern Art Archives, NY	Collection:	Series.Folder:
	AHB	XIII.38



FOR STUDY PURPOSES ONLY. NOT FOR REPRODUCTION.

The Museum of Modern Art Archives, NY	Collection:	Series.Folder:
	AHB	XIII.38

Detroit  
Mosher  
Jay - Booromal  
January Mid <sup>at</sup> <sup>show</sup>  
Philadelphia  
W Davis - owns very  
modern  
La France Textiles

FOR STUDY PURPOSES ONLY. NOT FOR REPRODUCTION.

The Museum of Modern Art Archives, NY	Collection:	Series.Folder:
	AHB	XIII.38

Handwritten notes on a yellowed page, including a diagram and a list of items with associated numbers.

*Handwritten notes:*  
 2nd  
 1st  
 2nd  
 3rd  
 4th  
 5th  
 6th  
 7th  
 8th  
 9th  
 10th  
 11th  
 12th  
 13th  
 14th  
 15th  
 16th  
 17th  
 18th  
 19th  
 20th

**Diagram:** A 3x3 grid with various markings. The top row contains 'B' and 'A'. The middle row contains 'E', 'D', and 'C'. The bottom row contains 'F' and '9'. There are 'X' marks in the top-left, middle-right, and bottom-right cells. Dimensions '4' and '9' are written below the grid.

**List of items:**

- A 4
- B 10 (5-70)
- C 15
- D 13 + 4 - 2' 12
- E 11 4
- F 23
- G 12 1/2

**Summary:**

F	23
	<hr/>
	16

FOR STUDY PURPOSES ONLY. NOT FOR REPRODUCTION.

The Museum of Modern Art Archives, NY	Collection:	Series.Folder:
	AHB	XIII.38

Detroit      Maillol bust A

Koller - Assunta A  
- Nelly Singer-Nandi B  
Matisse - large interior B+

Pundergüt - Promenade  
Vlamende Merins E+ long.  
Friesy - Toulon D  
" - composition A

Derain - young girl A  
Rodgwanis - lady B

Rolon - 4  
Dante & Beat B+  
Dream of Psalms A  
Evocation B  
composition D  
Mascud - sailor - B  
Chirico - gladiators B (small)  
" - A large  
Two horses B

~~Stene~~  
Stene - Blackbirds B+  
(girl - tree)  
Passin - C  
Boorsma, Jay - Waterfalls B

FOR STUDY PURPOSES ONLY. NOT FOR REPRODUCTION.

The Museum of Modern Art Archives, NY	Collection:	Series.Folder:
	AHB	XIII.38

Booth

Cyrene - Landscape B+

Renoir - girl at gate B+

~~Nude~~ Nude A

Fruit A

Picasso - little girl B  
1901?

Kleinck - water color

Segozac - Still life B+

Landscape A-

Gauguin - Apples - C-

Flower 1884 B-

Tahiti prayer A-

Van Gogh - Shoes (red sun)

Degas - Danseuse girls A-  
color cont. Studio Nov 1928

FOR STUDY PURPOSES ONLY. NOT FOR REPRODUCTION.

The Museum of Modern Art Archives, NY	Collection:	Series.Folder:
	AHB	XIII.38

Chicago - American  
Art Institute  
Gifford Beal - Spotlight R1201/4  
A Ryerson.  
Sargent. Victorian Glass Workers  
A- Ryerson 1201/90  
Samuel Coleman <sup>1871</sup> Cavignoni  
Innes A 597 - <sup>597.5</sup> Interior in garden - Study.  
Vedder - Landscape (long)  
00.605 A  
Sargent - Mrs Charles Gifford Dyer  
15.592 A  
Davies - Youth A 26.1030  
Eakins - Music (violinist) B  
27.993  
Meis Greg Bodice B- 11.836  
Glackens Chry Mouquin '05 A  
Bellows Love of Winter 14.1018  
Henri - Woman in Black early B  
John Sloan 10.317  
Rengasuechi 26.1580 A

FOR STUDY PURPOSES ONLY. NOT FOR REPRODUCTION.

The Museum of Modern Art Archives, NY	Collection:	Series.Folder:
	AHB	XIII.38

Chicago French pty.  
etc.

Bonnard Vestibule A  
lent by Charles A Worcester

Conture Head of Boy B+  
lent by Max Hill 1447.24

Hodler Stockholm B-  
27.306

Goerg Le Gouverneur B+  
D.B.

Segonzac - Still life - red parrot  
B.D. B+

Dufrene - Flowers B+ D.B.

Jean Marchand - Landscap C. D.B.

Braque - Still life C. D.B.

Daumier - Lawyers Head C-  
Mrs Hanson Bros.

Bondin - Seaport - B+ Ryerson  
Seaport - B "

Rapin - Young Woman B+ "  
Rose B "  
Andromeda B+ " "  
Poppies D "

FOR STUDY PURPOSES ONLY. NOT FOR REPRODUCTION.

The Museum of Modern Art Archives, NY	Collection:	Series.Folder:
	AHB	XIII.38

Signees - 10 or 12 w.c. Ryman  
Vlamincx - 5 w.c. ..  
Czanne - w.c.B. ..  
Matisse - By the window B+  
Frisz - ~~Frisz~~ Toulon 28.208 B-  
Gauguin Wife 25.753 A  
1890  
Degas Niece & Niece 1014.28  
lent by M.H. Coburn. B+  
Dumier - Don Quixote 25.296 B  
Van Gogh - Garden at Arles C+ 1015.28  
lent by Mrs H. Coburn  
Gauguin La Burao '92 B  
Calligraphy.  
~~Toulon~~ Messalina  
Fouin Tight rope walker #11 A-  
E.C. Chadbourn 92.25  
Toulon Messalina BX  
lent by Charles H. Worcester 1086.28  
Toulon An Moulin Rouge 25.510  
A- Birch-B.  
Gauguin Women & Child '01 A-  
27.460 Birch-B  
" Mahana Noctua '94 26.198 A

FOR STUDY PURPOSES ONLY. NOT FOR REPRODUCTION.

The Museum of Modern Art Archives, NY	Collection:	Series.Folder:
	AHB	XIII.38

Ralph Audney Chicago  
42 A- Skeletons - Vadder  
40 C Night on Sea Ryder  
41 C- Ambush. Blacklock  
-39 A Diana's Hunt Ryder  
38 C+  Pirates cave "  
37 C Huntman "  
-36 B+ Tragedy of the Sea "  
-35 B Smuggler's love "  
-34 B The clergy "  
33 C Hero + Lander "  

---

32 A- Portrait of Jim Duvineck  
23 A- Blacklock Fairy sealon  

---

22- B+ Signal of Distress/Homer  

---

George Harding loan  
Morales - 0  
...

FOR STUDY PURPOSES ONLY. NOT FOR REPRODUCTION.

The Museum of Modern Art Archives, NY	Collection:	Series.Folder:
	AHB	XIII.38

Mrs Mary Jenkins - A 54  
Hopper A New York Restaurant  
11 C - ... - 19  
12 A - ... - 20  
13 C - ... - 21  
14 B - ... - 22  
15 A - ... - 23  
16 C - ... - 24  
17 B - ... - 25  
18 A - ... - 26  
19 C - ... - 27  
20 A - ... - 28  
21 B - ... - 29  
22 C - ... - 30  
23 A - ... - 31  
24 B - ... - 32  
25 C - ... - 33  
26 A - ... - 34  
27 B - ... - 35  
28 C - ... - 36  
29 A - ... - 37  
30 B - ... - 38  
31 C - ... - 39  
32 A - ... - 40  
33 B - ... - 41  
34 C - ... - 42  
35 A - ... - 43  
36 B - ... - 44  
37 C - ... - 45  
38 A - ... - 46  
39 B - ... - 47  
40 C - ... - 48  
41 A - ... - 49  
42 B - ... - 50  
43 C - ... - 51  
44 A - ... - 52  
45 B - ... - 53  
46 C - ... - 54  
47 A - ... - 55  
48 B - ... - 56  
49 C - ... - 57  
50 A - ... - 58  
51 B - ... - 59  
52 C - ... - 60  
53 A - ... - 61  
54 B - ... - 62  
55 C - ... - 63  
56 A - ... - 64  
57 B - ... - 65  
58 C - ... - 66  
59 A - ... - 67  
60 B - ... - 68  
61 C - ... - 69  
62 A - ... - 70  
63 B - ... - 71  
64 C - ... - 72  
65 A - ... - 73  
66 B - ... - 74  
67 C - ... - 75  
68 A - ... - 76  
69 B - ... - 77  
70 C - ... - 78  
71 A - ... - 79  
72 B - ... - 80  
73 C - ... - 81  
74 A - ... - 82  
75 B - ... - 83  
76 C - ... - 84  
77 A - ... - 85  
78 B - ... - 86  
79 C - ... - 87  
80 A - ... - 88  
81 B - ... - 89  
82 C - ... - 90  
83 A - ... - 91  
84 B - ... - 92  
85 C - ... - 93  
86 A - ... - 94  
87 B - ... - 95  
88 C - ... - 96  
89 A - ... - 97  
90 B - ... - 98  
91 C - ... - 99  
92 A - ... - 100

FOR STUDY PURPOSES ONLY. NOT FOR REPRODUCTION.

The Museum of Modern Art Archives, NY	Collection:	Series.Folder:
	AHB	XIII.38

Reynolds House  
Homer A - Herring Net  
Renoir B x Female dans les fleurs  
Renoir A Lady at Picnic -  
Renoir B Girl in pink dress late  
Cézanne - Road B  
Corot - early 26 B -  
Manet - girl in riding habit? B x  
Degas - painted dancer B -  
Renoir B - girl seated  
Manet - Bull fight B  
Degas - Dancers Park A -  
Renoir, little girl sewing A -  
Degas A painted. drying hair □  
Cézanne WC B +

FOR STUDY PURPOSES ONLY. NOT FOR REPRODUCTION.

The Museum of Modern Art Archives, NY	Collection:	Series.Folder:
	AHB	XIII.38

Art Center lists  
of names. Helen  
✓ Sargent Hitchcock  
offers them to Mod. Mus.  
ask Miss Byerley.

---

Ralph H Booth  
2500 Buhl Building  
Detroit

---

Frank Hardman and  
1388 6 electric

---

Violet King - collector  
J. N. Brown

---

FOR STUDY PURPOSES ONLY. NOT FOR REPRODUCTION.

The Museum of Modern Art Archives, NY	Collection:	Series.Folder:
	AHB	XIII.38

James W Barney

Van gogh - drawing  
flowers piece

Cézanne - water color

Toulouse - Floulin de la  
galette

de Hauke

Van gogh - drawing of Bridge

Stephen Clarke

✓ Baignade study  
Surret

✓ Edith Weston  
Van gogh boats

FOR STUDY PURPOSES ONLY. NOT FOR REPRODUCTION.

The Museum of Modern Art Archives, NY	Collection:	Series.Folder:
	AHB	XIII.38

Cézanne - Lavie

L'Île Dominique  
very early

R'Estaque - B+

Mme. Cézanne late B

Gauguin

Early landscape B

La orane maria B  
photo Kandler

Meteorology B+

Bathers B? photo Kandler

1524 + 2  
photo Kandler

FOR STUDY PURPOSES ONLY. NOT FOR REPRODUCTION.

The Museum of Modern Art Archives, NY	Collection:	Series.Folder:
	AHB	XIII.38

1913  
1914  
1915  
1916  
1917  
1918  
1919  
1920  
1921  
1922  
1923  
1924  
1925  
1926  
1927  
1928  
1929  
1930  
1931  
1932  
1933  
1934  
1935  
1936  
1937  
1938  
1939  
1940  
1941  
1942  
1943  
1944  
1945  
1946  
1947  
1948  
1949  
1950  
1951  
1952  
1953  
1954  
1955  
1956  
1957  
1958  
1959  
1960  
1961  
1962  
1963  
1964  
1965  
1966  
1967  
1968  
1969  
1970  
1971  
1972  
1973  
1974  
1975  
1976  
1977  
1978  
1979  
1980  
1981  
1982  
1983  
1984  
1985  
1986  
1987  
1988  
1989  
1990  
1991  
1992  
1993  
1994  
1995  
1996  
1997  
1998  
1999  
2000  
2001  
2002  
2003  
2004  
2005  
2006  
2007  
2008  
2009  
2010  
2011  
2012  
2013  
2014  
2015  
2016  
2017  
2018  
2019  
2020  
2021  
2022  
2023  
2024  
2025  
2026  
2027  
2028  
2029  
2030  
2031  
2032  
2033  
2034  
2035  
2036  
2037  
2038  
2039  
2040  
2041  
2042  
2043  
2044  
2045  
2046  
2047  
2048  
2049  
2050  
2051  
2052  
2053  
2054  
2055  
2056  
2057  
2058  
2059  
2060  
2061  
2062  
2063  
2064  
2065  
2066  
2067  
2068  
2069  
2070  
2071  
2072  
2073  
2074  
2075  
2076  
2077  
2078  
2079  
2080  
2081  
2082  
2083  
2084  
2085  
2086  
2087  
2088  
2089  
2090  
2091  
2092  
2093  
2094  
2095  
2096  
2097  
2098  
2099  
2100  
2101  
2102  
2103  
2104  
2105  
2106  
2107  
2108  
2109  
2110  
2111  
2112  
2113  
2114  
2115  
2116  
2117  
2118  
2119  
2120  
2121  
2122  
2123  
2124  
2125  
2126  
2127  
2128  
2129  
2130  
2131  
2132  
2133  
2134  
2135  
2136  
2137  
2138  
2139  
2140  
2141  
2142  
2143  
2144  
2145  
2146  
2147  
2148  
2149  
2150  
2151  
2152  
2153  
2154  
2155  
2156  
2157  
2158  
2159  
2160  
2161  
2162  
2163  
2164  
2165  
2166  
2167  
2168  
2169  
2170  
2171  
2172  
2173  
2174  
2175  
2176  
2177  
2178  
2179  
2180  
2181  
2182  
2183  
2184  
2185  
2186  
2187  
2188  
2189  
2190  
2191  
2192  
2193  
2194  
2195  
2196  
2197  
2198  
2199  
2200  
2201  
2202  
2203  
2204  
2205  
2206  
2207  
2208  
2209  
2210  
2211  
2212  
2213  
2214  
2215  
2216  
2217  
2218  
2219  
2220  
2221  
2222  
2223  
2224  
2225  
2226  
2227  
2228  
2229  
2230  
2231  
2232  
2233  
2234  
2235  
2236  
2237  
2238  
2239  
2240  
2241  
2242  
2243  
2244  
2245  
2246  
2247  
2248  
2249  
2250  
2251  
2252  
2253  
2254  
2255  
2256  
2257  
2258  
2259  
2260  
2261  
2262  
2263  
2264  
2265  
2266  
2267  
2268  
2269  
2270  
2271  
2272  
2273  
2274  
2275  
2276  
2277  
2278  
2279  
2280  
2281  
2282  
2283  
2284  
2285  
2286  
2287  
2288  
2289  
2290  
2291  
2292  
2293  
2294  
2295  
2296  
2297  
2298  
2299  
2300  
2301  
2302  
2303  
2304  
2305  
2306  
2307  
2308  
2309  
2310  
2311  
2312  
2313  
2314  
2315  
2316  
2317  
2318  
2319  
2320  
2321  
2322  
2323  
2324  
2325  
2326  
2327  
2328  
2329  
2330  
2331  
2332  
2333  
2334  
2335  
2336  
2337  
2338  
2339  
2340  
2341  
2342  
2343  
2344  
2345  
2346  
2347  
2348  
2349  
2350  
2351  
2352  
2353  
2354  
2355  
2356  
2357  
2358  
2359  
2360  
2361  
2362  
2363  
2364  
2365  
2366  
2367  
2368  
2369  
2370  
2371  
2372  
2373  
2374  
2375  
2376  
2377  
2378  
2379  
2380  
2381  
2382  
2383  
2384  
2385  
2386  
2387  
2388  
2389  
2390  
2391  
2392  
2393  
2394  
2395  
2396  
2397  
2398  
2399  
2400  
2401  
2402  
2403  
2404  
2405  
2406  
2407  
2408  
2409  
2410  
2411  
2412  
2413  
2414  
2415  
2416  
2417  
2418  
2419  
2420  
2421  
2422  
2423  
2424  
2425  
2426  
2427  
2428  
2429  
2430  
2431  
2432  
2433  
2434  
2435  
2436  
2437  
2438  
2439  
2440  
2441  
2442  
2443  
2444  
2445  
2446  
2447  
2448  
2449  
2450  
2451  
2452  
2453  
2454  
2455  
2456  
2457  
2458  
2459  
2460  
2461  
2462  
2463  
2464  
2465  
2466  
2467  
2468  
2469  
2470  
2471  
2472  
2473  
2474  
2475  
2476  
2477  
2478  
2479  
2480  
2481  
2482  
2483  
2484  
2485  
2486  
2487  
2488  
2489  
2490  
2491  
2492  
2493  
2494  
2495  
2496  
2497  
2498  
2499  
2500  
2501  
2502  
2503  
2504  
2505  
2506  
2507  
2508  
2509  
2510  
2511  
2512  
2513  
2514  
2515  
2516  
2517  
2518  
2519  
2520  
2521  
2522  
2523  
2524  
2525  
2526  
2527  
2528  
2529  
2530  
2531  
2532  
2533  
2534  
2535  
2536  
2537  
2538  
2539  
2540  
2541  
2542  
2543  
2544  
2545  
2546  
2547  
2548  
2549  
2550  
2551  
2552  
2553  
2554  
2555  
2556  
2557  
2558  
2559  
2560  
2561  
2562  
2563  
2564  
2565  
2566  
2567  
2568  
2569  
2570  
2571  
2572  
2573  
2574  
2575  
2576  
2577  
2578  
2579  
2580  
2581  
2582  
2583  
2584  
2585  
2586  
2587  
2588  
2589  
2590  
2591  
2592  
2593  
2594  
2595  
2596  
2597  
2598  
2599  
2600  
2601  
2602  
2603  
2604  
2605  
2606  
2607  
2608  
2609  
2610  
2611  
2612  
2613  
2614  
2615  
2616  
2617  
2618  
2619  
2620  
2621  
2622  
2623  
2624  
2625  
2626  
2627  
2628  
2629  
2630  
2631  
2632  
2633  
2634  
2635  
2636  
2637  
2638  
2639  
2640  
2641  
2642  
2643  
2644  
2645  
2646  
2647  
2648  
2649  
2650  
2651  
2652  
2653  
2654  
2655  
2656  
2657  
2658  
2659  
2660  
2661  
2662  
2663  
2664  
2665  
2666  
2667  
2668  
2669  
2670  
2671  
2672  
2673  
2674  
2675  
2676  
2677  
2678  
2679  
2680  
2681  
2682  
2683  
2684  
2685  
2686  
2687  
2688  
2689  
2690  
2691  
2692  
2693  
2694  
2695  
2696  
2697  
2698  
2699  
2700  
2701  
2702  
2703  
2704  
2705  
2706  
2707  
2708  
2709  
2710  
2711  
2712  
2713  
2714  
2715  
2716  
2717  
2718  
2719  
2720  
2721  
2722  
2723  
2724  
2725  
2726  
2727  
2728  
2729  
2730  
2731  
2732  
2733  
2734  
2735  
2736  
2737  
2738  
2739  
2740  
2741  
2742  
2743  
2744  
2745  
2746  
2747  
2748  
2749  
2750  
2751  
2752  
2753  
2754  
2755  
2756  
2757  
2758  
2759  
2760  
2761  
2762  
2763  
2764  
2765  
2766  
2767  
2768  
2769  
2770  
2771  
2772  
2773  
2774  
2775  
2776  
2777  
2778  
2779  
2780  
2781  
2782  
2783  
2784  
2785  
2786  
2787  
2788  
2789  
2790  
2791  
2792  
2793  
2794  
2795  
2796  
2797  
2798  
2799  
2800  
2801  
2802  
2803  
2804  
2805  
2806  
2807  
2808  
2809  
2810  
2811  
2812  
2813  
2814  
2815  
2816  
2817  
2818  
2819  
2820  
2821  
2822  
2823  
2824  
2825  
2826  
2827  
2828  
2829  
2830  
2831  
2832  
2833  
2834  
2835  
2836  
2837  
2838  
2839  
2840  
2841  
2842  
2843  
2844  
2845  
2846  
2847  
2848  
2849  
2850  
2851  
2852  
2853  
2854  
2855  
2856  
2857  
2858  
2859  
2860  
2861  
2862  
2863  
2864  
2865  
2866  
2867  
2868  
2869  
2870  
2871  
2872  
2873  
2874  
2875  
2876  
2877  
2878  
2879  
2880  
2881  
2882  
2883  
2884  
2885  
2886  
2887  
2888  
2889  
2890  
2891  
2892  
2893  
2894  
2895  
2896  
2897  
2898  
2899  
2900  
2901  
2902  
2903  
2904  
2905  
2906  
2907  
2908  
2909  
2910  
2911  
2912  
2913  
2914  
2915  
2916  
2917  
2918  
2919  
2920  
2921  
2922  
2923  
2924  
2925  
2926  
2927  
2928  
2929  
2930  
2931  
2932  
2933  
2934  
2935  
2936  
2937  
2938  
2939  
2940  
2941  
2942  
2943  
2944  
2945  
2946  
2947  
2948  
2949  
2950  
2951  
2952  
2953  
2954  
2955  
2956  
2957  
2958  
2959  
2960  
2961  
2962  
2963  
2964  
2965  
2966  
2967  
2968  
2969  
2970  
2971  
2972  
2973  
2974  
2975  
2976  
2977  
2978  
2979  
2980  
2981  
2982  
2983  
2984  
2985  
2986  
2987  
2988  
2989  
2990  
2991  
2992  
2993  
2994  
2995  
2996  
2997  
2998  
2999  
3000  
3001  
3002  
3003  
3004  
3005  
3006  
3007  
3008  
3009  
3010  
3011  
3012  
3013  
3014  
3015  
3016  
3017  
3018  
3019  
3020  
3021  
3022  
3023<

FOR STUDY PURPOSES ONLY. NOT FOR REPRODUCTION.

The Museum of Modern Art Archives, NY	Collection:	Series.Folder:
	AHB	XIII.38

Stunday  
Gauguin 3 Briton 88  
Seated? seated.  
1 drawing of ♀  
3 Cezanne - Landscape  
Man under tree  
Monti Still life  
Van Gogh 1. Boy  
Dematt  
2 - 1. Study for Grandfather  
2. Laborer

FOR STUDY PURPOSES ONLY. NOT FOR REPRODUCTION.

The Museum of Modern Art Archives, NY	Collection:	Series.Folder:
	AHB	XIII.38

*Patrons* 5000 and above  
1000 to 5000  
~~500 to 1000~~  
-----  
*Sustaining.* 100.  
*Contributing M.* 25.  
*Member* 10.  
*Junior Member* 5.  
  
*Memorial*  
*Benefactor*  
*Life*  
*Contrib.*

FOR STUDY PURPOSES ONLY. NOT FOR REPRODUCTION.

The Museum of Modern Art Archives, NY	Collection:	Series.Folder:
	AHB	XIII.38

1. Personnel
2. Reconstruction of gallery (M.C.)
3. First exhibition
  1. Mr. Goodyear
  2. Mr. Barr
4. ~~Publicity~~ 2nd exhibition
  - a. Atlantic city lists.
5. 3rd exhibition
  - a. Eatons
6. Publicity
  - ~~a. London~~
  - ~~b. Success in past~~
  - ~~c. Look of New York Press~~  
~~New Yorker~~
  - d. Future

FOR STUDY PURPOSES ONLY. NOT FOR REPRODUCTION.

The Museum of Modern Art Archives, NY	Collection:	Series.Folder:
	AHB	XIII.38

7. letters ✓

8. gifts ✓

1. Sachs
2. Flechtlin Schmeling
3. Water colors Kemiggen

to be returned.  
Maillet Bronze

9. Offered for sale ✓

1. Stand ✓
2. Hart ✓

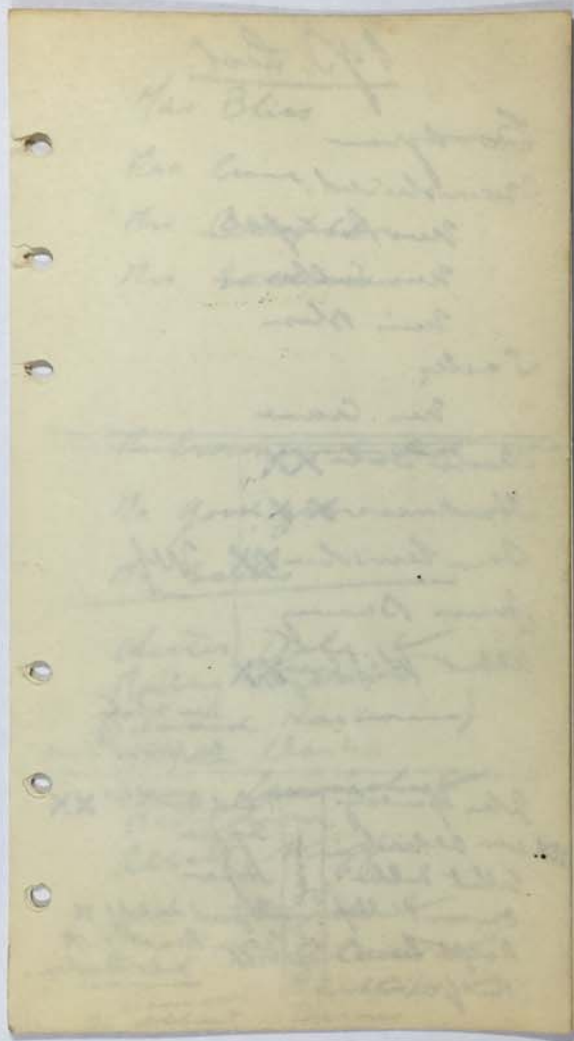
10. Tunes ✓

11. Visiting committee ✓

12. Stationery ✓

FOR STUDY PURPOSES ONLY. NOT FOR REPRODUCTION.

The Museum of Modern Art Archives, NY	Collection:	Series.Folder:
	AHB	XIII.38



FOR STUDY PURPOSES ONLY. NOT FOR REPRODUCTION.

The Museum of Modern Art Archives, NY	Collection:	Series.Folder:
	AHB	XIII.38

P.P. List.

Goodyear  
Cromwell  
Mrs Rockwell  
Mrs Sullivan  
Miss Stein  
Sack  
Mrs. Crane

---

Charles Oule XX  
Harkness. XX  
Sam Lewis XX Wf.  
James Barney  
Albert Wiggins XX  
Mrs Whitney  
Mrs Howard Smith

---

John Spence  
Mrs Aldrich  
Edith Miller  
Dorothy Phillips  
Ralph Booth  
Rueph Cole

Hand Barthol XX  
Susan  
Hope  
Margaret Child X  
Gaye Knott X  
Mrs. Keenan

FOR STUDY PURPOSES ONLY. NOT FOR REPRODUCTION.

The Museum of Modern Art Archives, NY	Collection:	Series.Folder:
	AHB	XIII.38

Mrs Bliss

Mrs Crane

Mrs Rockefeller

Mrs Sullivan

Mr Crowninshield

Mr Good year

Mr Sachs

Chester Dale ✓

Martin Ryerson

(Edward Harlan)

Stephen Clark

Sam Leavich ✓

Mrs Coburn

Albert Wiggin

Wm Aldrich ✓

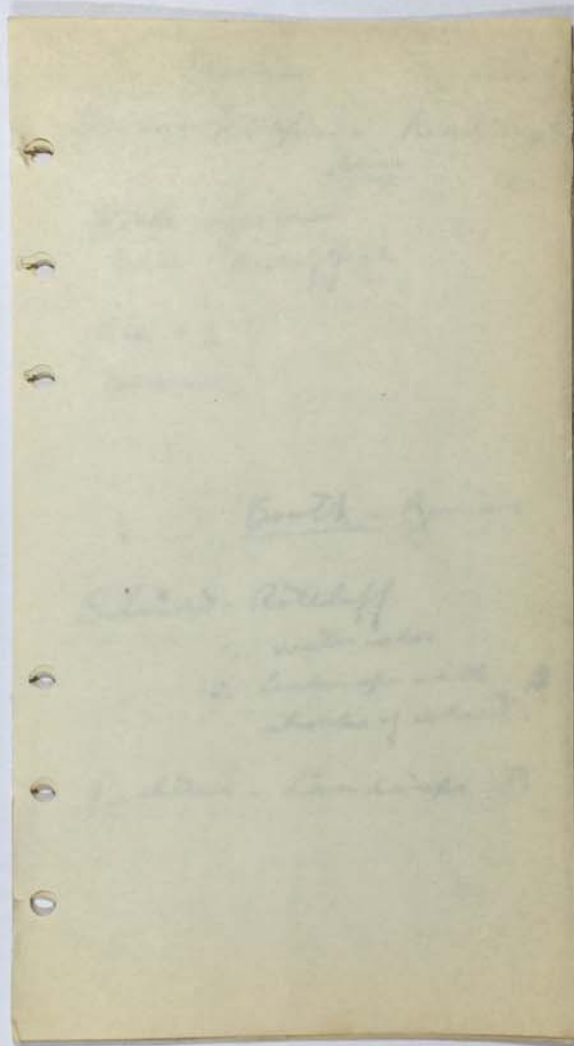
Fred Bartlett ✓

Duncan Phillips ✓

Dr Albert Barnes

FOR STUDY PURPOSES ONLY. NOT FOR REPRODUCTION.

The Museum of Modern Art Archives, NY	Collection:	Series.Folder:
	AHB	XIII.38



FOR STUDY PURPOSES ONLY. NOT FOR REPRODUCTION.

The Museum of Modern Art Archives, NY	Collection:	Series.Folder:
	AHB	XIII.38

Valentiner  
Kuchel Alpine landscape  
large  
Nolde - flowers  
Nolde head of girl  
Klee - 2  
Boorema  
  
Booth - German  
Schmidt - Rottbluff  
1. water color  
2. landscape with  
shocks of wheat.  
Pechstein - Landscape B

FOR STUDY PURPOSES ONLY. NOT FOR REPRODUCTION.

The Museum of Modern Art Archives, NY	Collection:	Series.Folder:
	AHB	XIII.38

German

Heddel Boats A-  
Drawing girl B  
Woman B+  
Pechstein ~~Still life B~~  
Portraits study A  
Under the Trees B  
Calle lilies A-  
Schmidt-R. On the Sea w.c. A-  
St. L. (flowers) B  
Waldmüll Evening on the Sea A  
w.c. B+ The Boats B+  
Still life (vases) B+  
Cactus B+  
Kiefer - Madonna A  
Hordner Dunes B  
Müller Brothers  large A  
2 more B  
Hoyer - Head of girl C  
Seewald - Galvanic B-  
Finnigst F. Side wheel A  
Village - B+  
Klee - 2 - with grass

FOR STUDY PURPOSES ONLY. NOT FOR REPRODUCTION.

The Museum of Modern Art Archives, NY	Collection:	Series.Folder:
	AHB	XIII.38

Nolde W.C.

Farm in Holsten A-

Hodler - Head

Nolde oils Portrait head B

Oriental B+

Indian Dancers A

Still life - Stack B

Byström Still life A

Kocher

Elbe - Dresden B+1921

Moschen - late B+

Rohlf W.C.

Lehmkuhl - bust

Mallat - Bust B

Nolde Tur small figures 0

FOR STUDY PURPOSES ONLY. NOT FOR REPRODUCTION.

The Museum of Modern Art Archives, NY	Collection:	Series.Folder:
	AHB	XIII.38

Worcester Chicago  
Mond - 55 A  
Renoir - middle - B+  
" late - many A.  
Gauguin Breton c. 87 A/fortune  
" Martiny 87 - B-  
Bonnard C+ small  
Innes' 87 good B+  
Degas - Daner [ ] B  
Ryder [ ] leather  
B+  
or gilded group of  
Chinese landscape  
of Ryder in Coe coll.

FOR STUDY PURPOSES ONLY. NOT FOR REPRODUCTION.

The Museum of Modern Art Archives, NY	Collection:	Series.Folder:
	AHB	XIII.38

Chicago - Drawings

Van Gogh - Cypresses A-

Picasso - Arlequin cubist

Redon - drawing  
25.757



Toulouse - La Blaise

FOR STUDY PURPOSES ONLY. NOT FOR REPRODUCTION.

The Museum of Modern Art Archives, NY	Collection:	Series.Folder:
	AHB	XIII.38

*[Faint handwritten notes on a yellowed, spiral-bound page. The text is mostly illegible due to fading and bleed-through from the reverse side. Some words like "Brentwood" and "1911" are faintly visible.]*

FOR STUDY PURPOSES ONLY. NOT FOR REPRODUCTION.

The Museum of Modern Art Archives, NY	Collection:	Series.Folder:
	AHB	XIII.38

~~Mr. Barr~~  
~~Mr. Brewster is not~~  
~~here?~~  
~~Ruch will be~~  
~~here shortly~~  
~~Thank you~~

FOR STUDY PURPOSES ONLY. NOT FOR REPRODUCTION.

The Museum of Modern Art Archives, NY	Collection:	Series.Folder:
	AHB	XIII.38

Brewster

- Van Gogh - Still-life A !  
grapes
- Cezanne - Road B-
- Roussin - Small landscape B+
- G. Broekmans - girl B
- Derain - crayon still life B  
minor interesting C
- Bondin - portrait C
- Marcoussis - winter Still life B+  
1926
- g Valmier Cubist Comp.
- Ozenfant landscape 1918 D
- Van Gogh - Drawing landscape B
- Curtis '25 landscape C
- Léger c 20 winter Still B+
- Guyot - gull on water A-
- Jaquin - Te rana rahi 91 C+
- Degas Mary Cassatt in the house A  
small portrait
- Morvan - Portrait portrait B+
- Renoir Portrait Study for teachers  
Ingres portrait A.

FOR STUDY PURPOSES ONLY. NOT FOR REPRODUCTION.

The Museum of Modern Art Archives, NY	Collection:	Series.Folder:
	AHB	XIII.38

Robert Arturson C+

Bonnard - Bualipud(?) A

John 9107 Study of reading

Bonnard - Landscape small B

Degas portrait Danvers B-

Manet portrait - man C

Picasso - Portrait of daughter B+

---

Vaillat Delatorchi 1927 D

Penna - two women 1926

- A group - landscape - group

- 3 if other view at - group

A sketch of a hand with cap

other view

FOR STUDY PURPOSES ONLY. NOT FOR REPRODUCTION.

The Museum of Modern Art Archives, NY	Collection:	Series.Folder:
	AHB	XIII.38

Johnson - Chicago  
Supper  
Picasso - ~~Head~~ Party B  
large unfinished sketch  
very Toulouse - ~~pic.~~ 1912 ?  
book 1903 - interesting  
Head - Blue 1904 B  
Flowers C  
Matisse - Head of Officer of Crown B+  
Head of girl  
Self - C  
two drawings A + B  
Gauguin - Still life B-  
Drawing  
\*Derain - Head of Boy - A - head  
girl D fine sketch  
Van Gogh - Sea in Orchard  
olive trees A  
Toulouse - Clown + Black pig B+  
8000  
Vuillard - head - B-

FOR STUDY PURPOSES ONLY. NOT FOR REPRODUCTION.

The Museum of Modern Art Archives, NY	Collection:	Series.Folder:
	AHB	XIII.38

Robert R. Mc Cormick  
Chicago  
Cezanne Bathers B  
small  
Rudon Venus on a shell B  
" Flowers D  
Renoir - girl's bust A-  
D  
Gauguin - Still-life A  
flowers  
important.  
Medigliani - W.C. Peacock  
made A!  
Degas - dancers part C

FOR STUDY PURPOSES ONLY. NOT FOR REPRODUCTION.

The Museum of Modern Art Archives, NY	Collection:	Series/Folder:
	AHB	XIII.38

Mrs L.L. Colburn  
Bladwin Hotel

Van Gogh Self A.  
" Garden at Arles B-  
(see in Museum)

Kopfer - 4 w.c.

Matisse Le journal bleu et  
from Howard Young M.-N. II p. 249  
" George Moore painted fair

Renoir - the Arabian girl - head A-  
" In the Terrain green-B.  
" Sisley portrait - fine

Cezanne Flowers early fair  
" Round table roof side B+

" " "small"

Renoir Woman Sewing fine A-  
" 2 girls on bridge large A  
" Flowers Chrysanthemum fine



FOR STUDY PURPOSES ONLY. NOT FOR REPRODUCTION.

The Museum of Modern Art Archives, NY	Collection:	Series.Folder:
	AHB	XIII.38

Ralph Coe  
Cézanne 81 - La Maison abandonnée B  
" '88 Les arbres Pruniers etc  
" La Tour à Pigeons  
'95 en Mont Briand  
Renoir La Baigneuse de Bouzon  
L'ère 1888 B+" La Promenade la bord  
de la mer 92 A  
" La Baigneuse 92 97  
" Jeanne Samary '78 B  
" Vie au Pont d'Or '72 A  
" M. Edwards 1904 A  
" glass & shell  
" Flowers c  
Van Gogh - Parc de St Remy  
Montross show  
Matisse - Nice B -

FOR STUDY PURPOSES ONLY. NOT FOR REPRODUCTION.

The Museum of Modern Art Archives, NY	Collection:	Series.Folder:
	AHB	XIII.38

Tombour - De la Cité Gilbert  
'87 early strong B+

Degas - la Danse grecque  
B+

Rouault - Palais des Rois  
A

Gauguin - Femme d'honneur in  
chaise of Palais B  
above door

Jankarunin B+

Sixty C

Monet 2 fair

Modigliani A - Boy

Juro  
Roussan flowers B

Redon - Plante

FOR STUDY PURPOSES ONLY. NOT FOR REPRODUCTION.

The Museum of Modern Art Archives, NY	Collection:	Series.Folder:
	AHB	XIII.38

Franklin  
Gates M. Kelly  
O. M. S.  
17m - Woman with 2 boys B  
Renoir - 2 girls with hats B  
" - small lady in grass B  
" - portrait - M. of child A  
" - head of girl from B  
X Gauguin - Te raan B  
S. S.  
Pissarro B -  
Redon - myelin head & color  
paint A -  
  
Carl Anderson  
Toulouse - Miller B  
X Gauguin - Noire - ~~W~~  
Woman in wave  

---

Cot Lomb  
Louisiana large landscape  
John Sloan  
Pascin - Negroes  
Dreyfus -  
Pascin nude - B



FOR STUDY PURPOSES ONLY. NOT FOR REPRODUCTION.

The Museum of Modern Art Archives, NY	Collection:	Series.Folder:
	AHB	XIII.38

Frank - <sup>3007 Euclid</sup> ~~Frank~~ <sup>Henry</sup> ~~Henry~~  
Noddy - head of girl with  
red hair - B  
Derain - head of girl - B  
Toulouze - small head - B  
Vlaminck - Flowers - B  
Favory sketch  
Favory - figure, in green  
landscape B  
Coubine - landscape in red  
Kistling - landscape B  
Utrillo - A  
Vlaminck landscape A -  
Karpis - nude !  
Margaret - landscape B  
Renoir - Bronze relief  
two small bronzes Smith  
and Waterhouse



FOR STUDY PURPOSES ONLY. NOT FOR REPRODUCTION.

The Museum of Modern Art Archives, NY	Collection:	Series.Folder:
	AHB	XIII.38

Cleveland Museum  
Redon - A  
Picasso - <sup>Violette H</sup> Leonard C. Hanna jr A  
non period - fine ♀  
and ~~Albert~~ large  
good. A  
Degas B  
Toulouse ~~Dau~~ cafe  
Boudin - A+  
Dickinson A still  
Home San Pierre B+  
Eakins  
Mc Fee  
Miller & young girls B

FOR STUDY PURPOSES ONLY. NOT FOR REPRODUCTION.

The Museum of Modern Art Archives, NY	Collection:	Series.Folder:
	AHB	XIII.38

Mrs Richard L. McLeanham  
Dellwood  
Mt. Kisco  
N.Y.  
née Hammond

from Helen Sargent Hitchcock  
of Bird Center then  
Mrs R.

---

Mrs Emily Hammond  
same address  
as above.

---

Mrs Meredith Ware 230 E 79

---

Mrs John W. Olyphant  
103 E 72

or née Hammond

Helen S. Hitchcock

FOR STUDY PURPOSES ONLY. NOT FOR REPRODUCTION.

The Museum of Modern Art Archives, NY	Collection:	Series.Folder:
	AHB	XIII.38

Renoir - Cat Institute  
Peyerson

Renoir 602.18 Still life - A  
" 183.15 Chrysanthemum A-  
" 586.13 Le Fleur au chapeau B  
" 455.13 Child in White Dress  
" 1201.98 L'éventail C+

Cyrene  
Monet 22.427 Argenteuil A!  
Renoir 22.437 Breakfast by River B+

" 22.438 Mairie de Van A-  
" Two young girls A

Pissarro 22.433 Café au lait A  
" 22.439 Near Lake Shore A  
Monet 22.428 Colloge d'Étretat A  
Sisley 22.441 Mont, Street in A

FOR STUDY PURPOSES ONLY. NOT FOR REPRODUCTION.

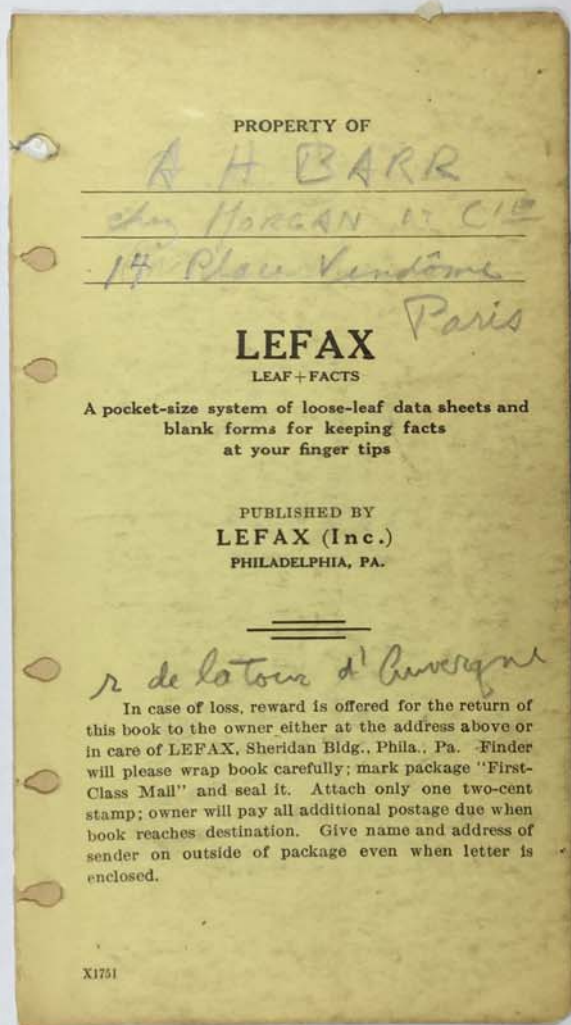
The Museum of Modern Art Archives, NY	Collection:	Series.Folder:
	AHB	XIII.38

Handwritten notes on a yellowed, spiral-bound page. The text is written in cursive and includes several lines of numbers and names. The most legible parts are:

20.50 - 21.50  
A - 22.50 21.50  
+A - 23.50 21.50  
Simpson  
Seascape  
+B 24.50 21.50  
! A 25.50 21.50  
+C 26.50 21.50  
A 27.50 21.50  
A 28.50 21.50  
A 29.50 21.50  
A 30.50 21.50  
A 31.50 21.50  
A 32.50 21.50  
A 33.50 21.50

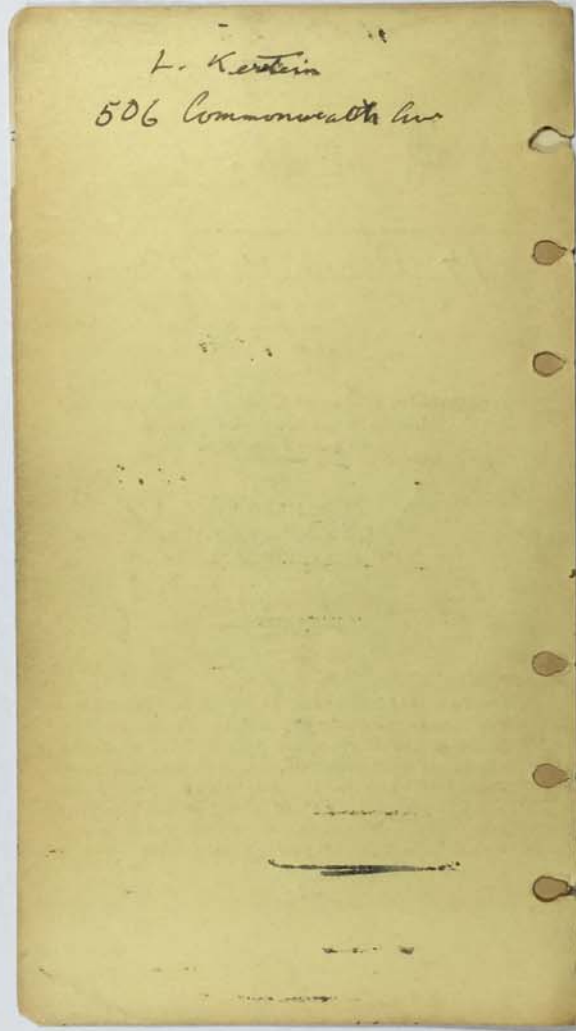
FOR STUDY PURPOSES ONLY. NOT FOR REPRODUCTION.

The Museum of Modern Art Archives, NY	Collection:	Series.Folder:
	AHB	XIII.38



FOR STUDY PURPOSES ONLY. NOT FOR REPRODUCTION.

The Museum of Modern Art Archives, NY	Collection:	Series.Folder:
	AHB	XIII.38



FOR STUDY PURPOSES ONLY. NOT FOR REPRODUCTION.

The Museum of Modern Art Archives, NY	Collection:	Series.Folder:
	AHB	XIII.38

Hôtel Hatingnan  
Cours Hatingnan  
Baumeister 2  
Beckmann 5 1 Hrs Rv 1 R

W 1457	1742
Z 1522	1807
Z 1537	1902
L 1934	2306

Simplon Moderne

Slevogt

FOR STUDY PURPOSES ONLY. NOT FOR REPRODUCTION.

The Museum of Modern Art Archives, NY	Collection:	Series.Folder:
	AHB	XIII.38

Hotel Hattigren  
Borne Hattigren  
Baumeister 2.  
Beckmann 5 | H. R. | 12

~~Törestalstr. #42~~

Slevogt

FOR STUDY PURPOSES ONLY. NOT FOR REPRODUCTION.

The Museum of Modern Art Archives, NY	Collection:	Series.Folder:
	AHB	XIII.38

NORDDDEUTSCHER LLOYD BREMEN

\*

München - Stuttgart  
 9:20 AM - 12:53  
 12 422 ✓  
 3:44 - 7:00 18

St - W. 19 Schellau  
 7:52 AM - Schaffhausen 12:11 20  
 10:45-10:45 36

Sch 1. PH Tr Winterthur 1:52 PM  
 4:53 20

---

Winterthur - Zurich 21  
 10:15 50 10:54  
 11 11:26

Zurich 4:53 Langsam 440  
 13:05 3:55  
 16:37 - 19:34

\*

---

Berufsorganisationen, die Studienfahrten nach Nordamerika unternehmen wollen,  
 wenden sich an den NORDDDEUTSCHEN LLOYD IN BREMEN. Den Berufs-  
 + interessen entsprechende Reiseprogramme werden hier ausgearbeitet. +

FOR STUDY PURPOSES ONLY. NOT FOR REPRODUCTION.

The Museum of Modern Art Archives, NY	Collection:	Series.Folder:
	AHB	XIII.38

Hotel Hatingham  
Worms Hatingham

Baummeister 2		
Beckmann 5	1 Hr. R.	12
Camperdown 2		
Corinth		
Dix 4		10
Groag 4		10
Heckel 2		
Hoyer 3		
Polchstein 3		
Kandinsky 2		10
Kirchner 5	1	10
Klee 5		
Feininger		
Kokoschka 5		12
Liebermann		
Macke 2		
Nolde, Emil 5		12
Marc 5		12
Hüller, Otto 2		
Schlesinger 2		
Schmidt-Rottluff 5		10
Slevogt		

FOR STUDY PURPOSES ONLY. NOT FOR REPRODUCTION.

The Museum of Modern Art Archives, NY	Collection:	Series.Folder:
	AHB	XIII.38

Rohlf 2  
Javlenky 2  
(Seewald 2)  
(Munch)  
Grossmann 2  
(Livy, Rodolph 2)  
Mime 2  
Schrimpf 3  
(Scholz, Peter)  
Scholz, Georg 2  
Kensoldt 2  
Mörscher - Becker 2  
Schmidt - paintings  
Klingenschmidt  
- Adler, Jankel  
Felix, Hüller  
Katzwill  
Rudolf Probenauer 2  
(Tentsl.) Witter  
Herbig  
Kaus, Max  
Kerschbaum, Anton

FOR STUDY PURPOSES ONLY. NOT FOR REPRODUCTION.

The Museum of Modern Art Archives, NY	Collection:	Series.Folder:
	AHB	XIII.38

*Joseph Sternberg portrait*

- Bellamy
- Gerhard Marcks
- Ernesto di Tini
- Scharf
- Kolbe 2
- Gurland
- Sintonis
- Steiner
- Kogon

0	0	22
0	0	23
0	0	24
0	0	25
0	0	26
0	0	27
0	0	4
		7

M  
T  
W  
T

FOR STUDY PURPOSES ONLY. NOT FOR REPRODUCTION.

The Museum of Modern Art Archives, NY	Collection:	Series.Folder:
	AHB	XIII.38

National Gallery

Klee - Angler

Zwitzer-Maschine

Goldener Fisch

- Kirschner - 1. Strasse 1913

2. Wohnraum des Künstlers

- 3 Rhein-Brücke 1922

4 Tanagerinnen von 1914

Heidel - Bildnis 1919

Frühling 1918

Kohonen - Adolf Loos 1909

Dix - Sohn des Künstlers

Macke -

Macke unter Baumen

1914

FOR STUDY PURPOSES ONLY. NOT FOR REPRODUCTION.

The Museum of Modern Art Archives, NY	Collection:	Series.Folder:
	AHB	XIII.38

Paris Damian  
Drawings

• Bignon  
Henri Robert  
~~Lamine~~  
• Cl. Roger-Farx  
• George Aubry re de B.2  
Durand-Paul  
Max Esnault-Pelterie  
Rosenberg popare  
• Max Lapauze Renaissance  
George Bernheim 1 ←  
Louvre  
A. Alexandre  
de la Roche Baron Gourgeaud  
~~Georges Barbier~~  
Dore - de qui Voltaire  
→ Gobin - rue Lafitte 1

Charpentier

Sculpture

Paris  
16 busts Paul Philippson  
Woman + Child - 174a - Rosenberg  
père aboyer - Haguen  
write Bourgeois

FOR STUDY PURPOSES ONLY. NOT FOR REPRODUCTION.

The Museum of Modern Art Archives, NY	Collection:	Series.Folder:
	AHB	XIII.38

~~Proutie~~  
Proutie  
in Tourson

E Joseph-Rignault  
42 rue Caulaincourt 18<sup>e</sup>  
Kochler  
KOEHLER  
Bernd Kochler 34 Brandeburg St  
Kolonchka - Womowick 10-53  
Pechelin 121 river + Kühle  
Marc Ruhende Tier 1913  
Wasserfall 1914  
Afen 1910  
Grosse Tier ? 1911  
Water color 1914  
Maler Dame vor Fenster  
Klee MA entladen 1913

Compendio Rotes Pferd  
1919

FOR STUDY PURPOSES ONLY. NOT FOR REPRODUCTION.

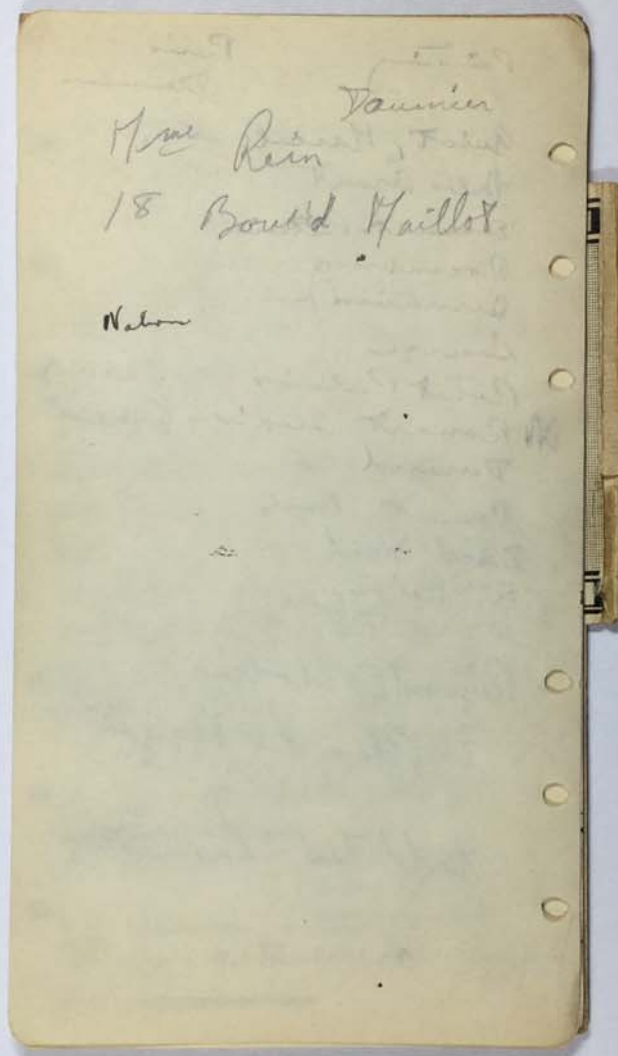
The Museum of Modern Art Archives, NY	Collection:	Series.Folder:
	AHB	XIII.38

Painting Paris  
Dauvin

- Quiot, Marcel. des  
Jules Braut
- Esnault-Pelterie
- Rozembly  
Bernheim
- Louvre
- Petit Palais grand hall W.S.
- Rouart Alexis - Ernest  
Durand
- Doucet Mme
- David-Weil
- Mme Rein Owen
- Raymond Escholier  
Plan des Voages
- Gatteton - Lancaster

FOR STUDY PURPOSES ONLY. NOT FOR REPRODUCTION.

The Museum of Modern Art Archives, NY	Collection:	Series.Folder:
	AHB	XIII.38



FOR STUDY PURPOSES ONLY. NOT FOR REPRODUCTION.

The Museum of Modern Art Archives, NY	Collection:	Series.Folder:
	AHB	XIII.38

America

Brooklyn Mus - Head B  
Washington - Philip - 1 Lawyers B  
2 Revolt A  
3 Sculptor B  
4 F. Woods C  
5 Don Quixote  
6 The Mountbatts 300  
7 Landress A  
8

N.Y. Lewisohn - Drinkers A-  
N.Y. Bliss - Landress A  
NY Goodyear - " B  
NY " - Dealers B-  
N.Y. Rainey Rogers - Fugitives  
NY. Kurriger - The Escape  
N.Y. Hirschland - Don Q  
~~Arthur Sachs~~  
Boston - Paine - Don Q  
" - Spaulding - Lawyer  
" - Museum - Hores  
Chicago - Art Inst - Don Q  
~~Shawmut - C~~  
N.Y. Metropol - Havenmeyer  
" - Don Q  
N.Y. Lewisohn - III class  
Chicago - Matthiolhorn - Minatule  
279  
N.Y. Lewisohn

FOR STUDY PURPOSES ONLY. NOT FOR REPRODUCTION.

The Museum of Modern Art Archives, NY	Collection:	Series.Folder:
	AHB	XIII.38

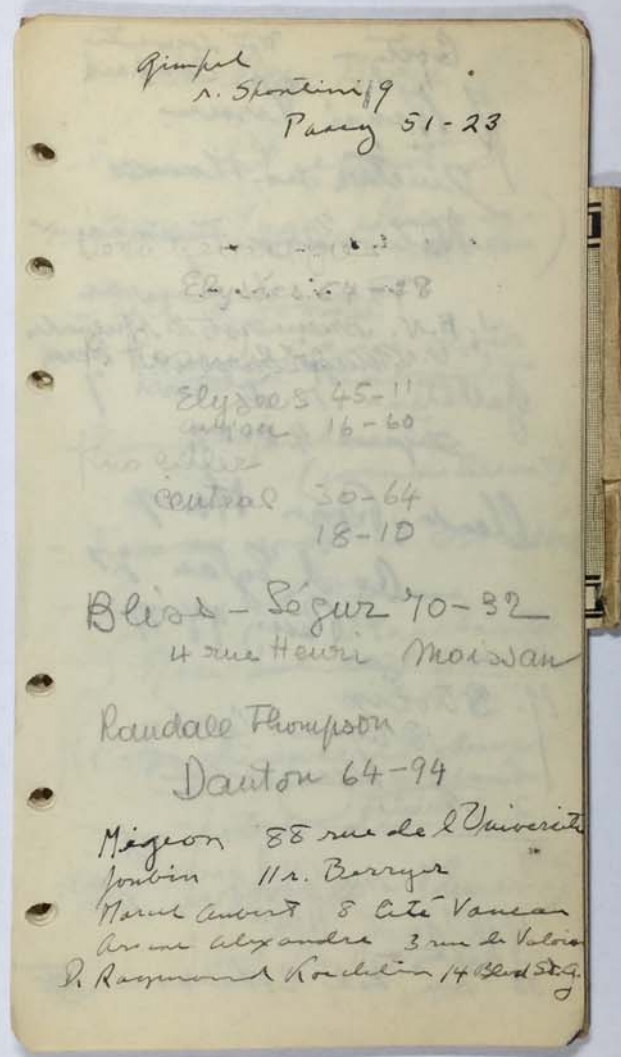
Handwritten notes on a yellowed, spiral-bound notebook page. The text is written in cursive and includes the following legible entries:

- Mrs. Clark - Corcoran - fine
- Walters - Baltimore
- Stranley
- Philip Lehmann
- or Friedman
- Mrs. Vanderbilt ? (old friend)

The rest of the page contains very faint, mostly illegible handwriting.

FOR STUDY PURPOSES ONLY. NOT FOR REPRODUCTION.

The Museum of Modern Art Archives, NY	Collection:	Series.Folder:
	AHB	XIII.38



FOR STUDY PURPOSES ONLY. NOT FOR REPRODUCTION.

The Museum of Modern Art Archives, NY	Collection:	Series.Folder:
	AHB	XIII.38

Goety - N<sup>o</sup> Louventin  
Compart  
H. Henri Verne  
Direction des Musées  
Nationaux Français  
Palais du Louvre  
J. B. N. Briemerstr 10 Munich  
J. S. N. Magdeburgerstr 5 Berh  
Gallatin - R. de Berré 7  
Expens 40.22  
Claude-Rogn Marx  
Bo d'Eylan 27  
Paris 99-77  
M. Strolin  
18 Avenue Cuchy  
Rauzanne  
2 Dammier  
33 rue St James <sup>11<sup>e</sup></sup> de  
Yvet  
17 de Yvet Neilly  
35 rue del'Esperance XIII

FOR STUDY PURPOSES ONLY. NOT FOR REPRODUCTION.

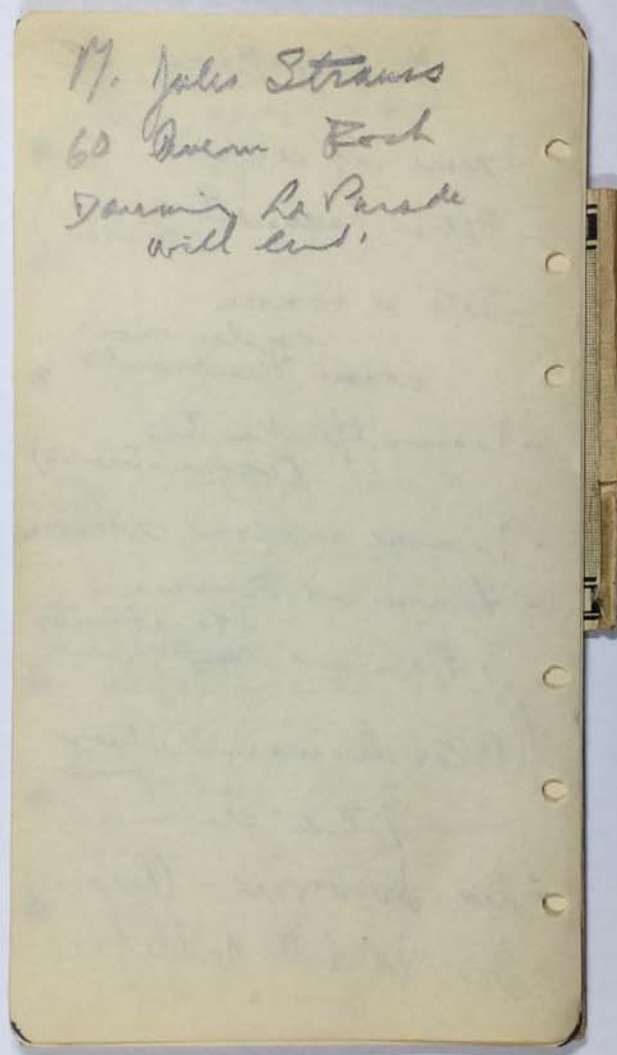
The Museum of Modern Art Archives, NY	Collection:	Series.Folder:
	AHB	XIII.38

Van Ryzee Mary

- Femme et enfant
- Petrus (aquarelle rouge et bleu)
- Tête d'Homme  
cabe noir  
comme Rembrandt
- Femme Marchandes  
(comme Secret)
- Femme aux bras croisés
- Homme et Femme  
Marchandes
- Main sur l'épaule  
ou la main
- Blancheur et deux  
enfants  
petit dessin
- Les Ivrognes - (Remarie)
- For. qui ditte double face  
(dans à l'œuvre)

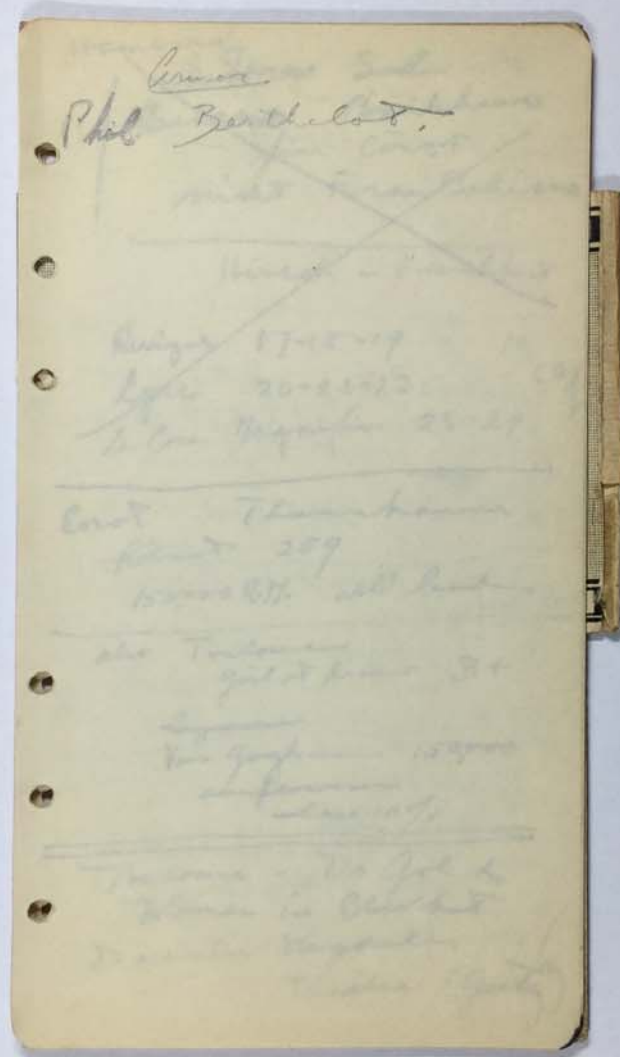
FOR STUDY PURPOSES ONLY. NOT FOR REPRODUCTION.

The Museum of Modern Art Archives, NY	Collection:	Series.Folder:
	AHB	XIII.38



FOR STUDY PURPOSES ONLY. NOT FOR REPRODUCTION.

The Museum of Modern Art Archives, NY	Collection:	Series.Folder:
	AHB	XIII.38



FOR STUDY PURPOSES ONLY. NOT FOR REPRODUCTION.

The Museum of Modern Art Archives, NY	Collection:	Series.Folder:
	AHB	XIII.38

~~Hamburg  
Behrens Sohn  
Behrens Bankhaus  
für Corot  
nicht Frau Behrens~~

~~Hirsch in Frankfurt~~

~~Rivier 17-18-19 19/60  
Lyon 20-21-22  
La Cour Magnifique 23-24~~

---

Corot - Thannhauser  
Robert 259  
150,000 R.M. will send

---

also Toulouse  
girl at piano B+

~~Cyprus~~  
Van Gogh — 150,000  
sunflowers  
less 10%

---

Toulouse - Dr Gold  
Woman in Blue hat  
Dammier Haystack  
" Theatre (Goetz)

FOR STUDY PURPOSES ONLY. NOT FOR REPRODUCTION.

The Museum of Modern Art Archives, NY	Collection:	Series.Folder:
	AHB	XIII.38

Matthien  
will send photo of  
Darius Hess. Bettleren

---

C

---

Dunder  
Yellow Dog Blues  
Hofer. Fleckheim  
Verein

---

H. Borst Stallgut  
für Schlemmer  
Schlemmer  
Fünf Männer von Raum  
" Vorübergehender

---

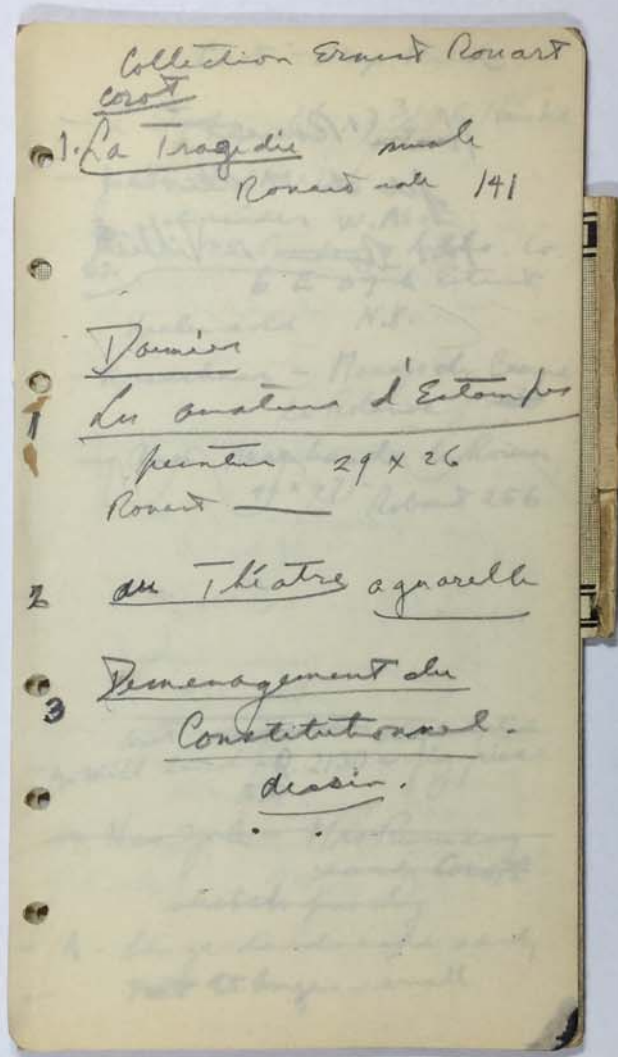
Johann Meises  
Burg Giebichenstein  
bei Halle

---

Schnuff in Wänden

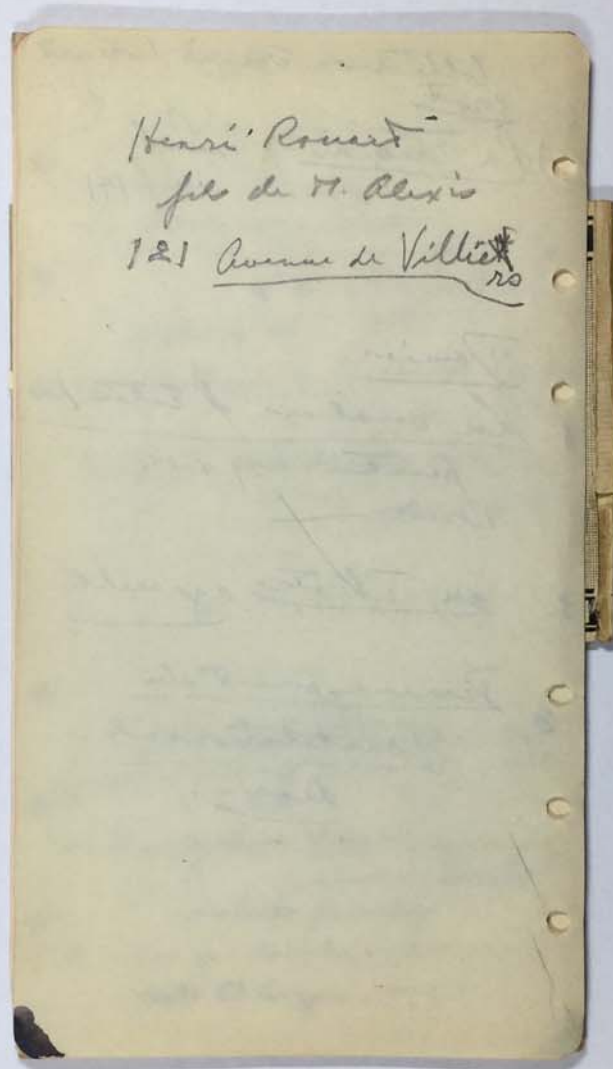
FOR STUDY PURPOSES ONLY. NOT FOR REPRODUCTION.

The Museum of Modern Art Archives, NY	Collection:	Series.Folder:
	AHB	XIII.38



FOR STUDY PURPOSES ONLY. NOT FOR REPRODUCTION.

The Museum of Modern Art Archives, NY	Collection:	Series.Folder:
	AHB	XIII.38



Henri Rouart  
fils de H. Alexis  
121 Avenue de Villiers <sup>rs</sup>

FOR STUDY PURPOSES ONLY. NOT FOR REPRODUCTION.

The Museum of Modern Art Archives, NY	Collection:	Series.Folder:
	AHB	XIII.38

Coart - Alex. Reid

- L'Etang  $6\frac{1}{2} \times 7\frac{3}{4}$  del Hauke
- Judith -  $40\frac{1}{2} \times 24\frac{1}{2}$  1  
Schneider W.A.  
75 Bunting & Litho. Co.  
6 E 39th Street  
dealer-sold N.Y.
- Kraushaar - Monois de Beane  
La Rolande ~~1874~~
- Quai Marchands de Rouen  
 $42 \times 67$  - Robaut 256

---

Coart ~~Kraushaar~~ Wildenstein  
- A - Will Lind - R. 2130 - fig piece  
1874  
in New York - Mrs Rumsey  
early Coart  
sketch first by  
- A - large landscape early  
- Fort St. Ange - small

FOR STUDY PURPOSES ONLY. NOT FOR REPRODUCTION.

The Museum of Modern Art Archives, NY	Collection:	Series.Folder:
	AHB	XIII.38

Dumier + Reid  
- L'Amateur d'Estampes  
small - Stankov  
- Au Theatre Francais  
K. Soudler  
Ottawa  
- Colonel Woods, Canada  
Wagon de Troisième Classe  
~~Les deux Gavaises + Scotland~~  
La Boignade + Scotland  
9 3/4 x 12 1/2  
Philadelphia - Sessler  
Dumier before Esch  
See v = Burrell 13 1/4 x 12 1/4  
Hutton Castle Berwick-on-Tweed  
Dumier Tate  
1 Burrell - good Samaritan  
Burr. Amateur d'Estampes v = A  
Bon Quisette Western 6371  
Corot 2. Portrait de Femme Burrell  
1. Arignon Prof. Palace  
3. Italian Peasant Monas

FOR STUDY PURPOSES ONLY. NOT FOR REPRODUCTION.

The Museum of Modern Art Archives, NY	Collection:	Series.Folder:
	AHB	XIII.38

Corot - America  
The Runney - fine landscape  
early panorama  
Otto Dix  
Beyratherstr. 32  
Dresden  
#28 Kind.  
Kind mit Puppe.

---

FOR STUDY PURPOSES ONLY. NOT FOR REPRODUCTION.

The Museum of Modern Art Archives, NY	Collection:	Series.Folder:
	AHB	XIII.38

Coast  
107 n. Kevin Garton  
M. Jossel & Garton  
Berkshire - four  
with inscribed over picture  
  
Hortley his name the  

---

Kilbr  
Buffalo - Middle  
Ridgely -  
Detroit -  
Wright -

FOR STUDY PURPOSES ONLY. NOT FOR REPRODUCTION.

The Museum of Modern Art Archives, NY	Collection:	Series.Folder:
	AHB	XIII.38

Belling

Dreilang - Belling <sup>Missig</sup>  
Sculptor 1923 - write to cast in brass  
Kopf in Holz 1921 von Sternberg  
~~Flakke 1922~~  
Sternberg 1929 "  
~~Kleiniker~~ Paramount, Hollywood

Montag bis neun Uhr

---

Kolbe

Buffalo - Weibliche Figur  
Rockefeller - "  
Detroit - "  
Weyher - "

FOR STUDY PURPOSES ONLY. NOT FOR REPRODUCTION.

The Museum of Modern Art Archives, NY	Collection:	Series.Folder:
	AHB	XIII.38

Neue Kunst Fides

Pinak. aq.

1. Scheunen 20 9 26
2. Der Pulverturm I 28 8 25
3. Scheunen II 22 9 26
4. Barque 5 8 29
5. Sonnenuntergang I 10-9-26

Öl

1. Lüneburg II '29
2. Possendorf '29

---

• Kondensat  
Zwei Zeichzack 197

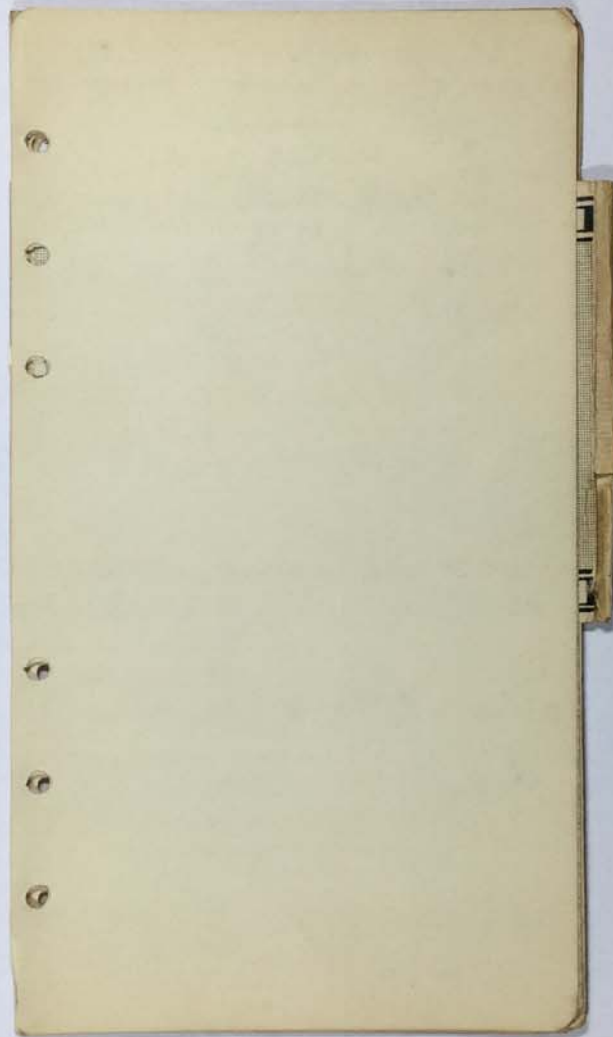
---

• Dix <sup>as</sup> Rotblonde Frauenhoff

•

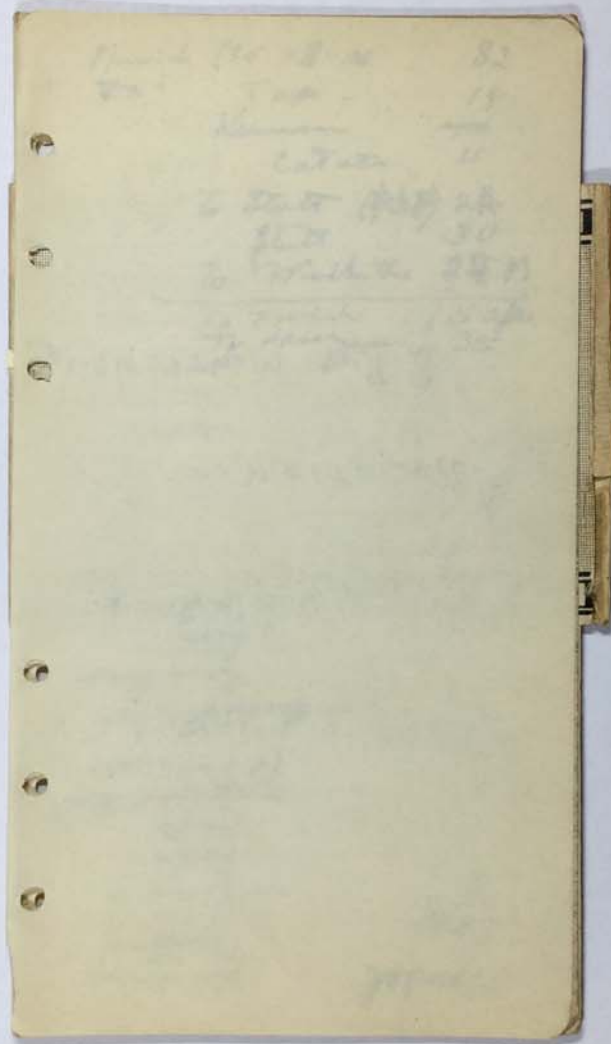
FOR STUDY PURPOSES ONLY. NOT FOR REPRODUCTION.

The Museum of Modern Art Archives, NY	Collection:	Series.Folder:
	AHB	XIII.38



FOR STUDY PURPOSES ONLY. NOT FOR REPRODUCTION.

The Museum of Modern Art Archives, NY	Collection:	Series.Folder:
	AHB	XIII.38



FOR STUDY PURPOSES ONLY. NOT FOR REPRODUCTION.

The Museum of Modern Art Archives, NY	Collection:	Series.Folder:
	AHB	XIII.38

Munich (35 x 3 = 105) 82  
" " - 14  
Neuman 400  
Cat etc 15  
to Stuet (4.12) 24  
Stuet 30  
to Walthers 28 M  

---

To Zurich 15 apr.  
To Darmstadt 35  
8 Rue MONTPELIER

ASSOCIATION

Berout  
Aron  
Command  
D. W. Wilson  
R. P. ...  
D. W. ...  
R. ...  
L. ...  
Quiffing  
K. ...

28 Apr  
Pawdel

FOR STUDY PURPOSES ONLY. NOT FOR REPRODUCTION.

The Museum of Modern Art Archives, NY	Collection:	Series.Folder:
	AHB	XIII.38

18  
18th Fri 11  
12  
Stutt -  
422

19  
Stutt  
10-45  
12-2  
Winthun  
4:53  
1:52

20  
Sund  
Winthun  
11  
1050  
(126)  
1.  
Langanne  
~~355~~  
448

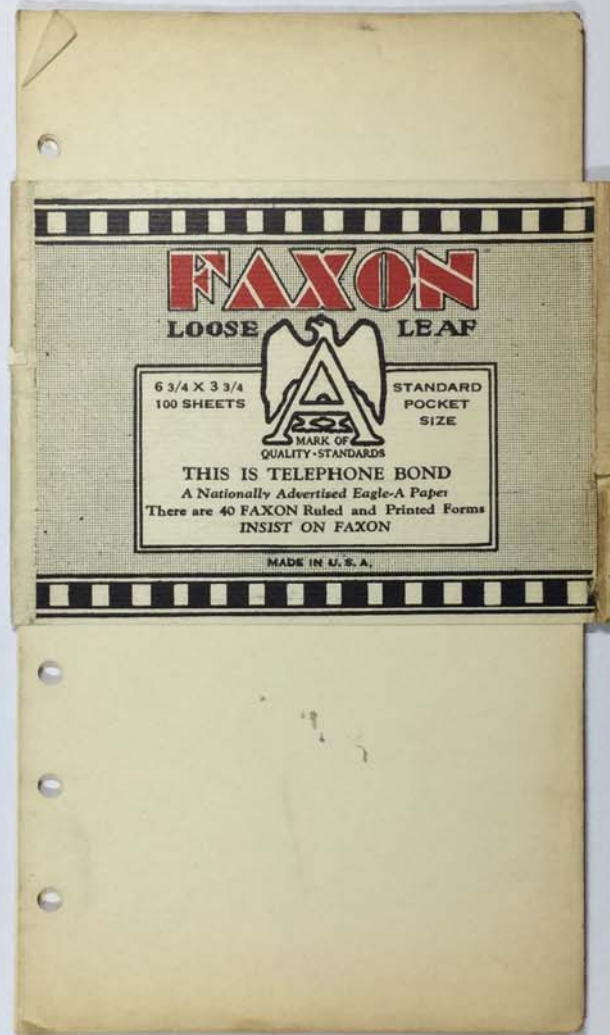
---

Langanne - Paris  
140:10  
~~11:58 PM~~ 22:18  
11:11 PM 7:18

March 1900  
Stutt  
11

FOR STUDY PURPOSES ONLY. NOT FOR REPRODUCTION.

The Museum of Modern Art Archives, NY	Collection:	Series.Folder:
	AHB	XIII.38



FOR STUDY PURPOSES ONLY. NOT FOR REPRODUCTION.

The Museum of Modern Art Archives, NY	Collection:	Series.Folder:
	AHB	XIII.38

