

CONDITIONS OF USE FOR THIS PDF

The images contained within this PDF may be used for private study, scholarship, and research only. They may not be published in print, posted on the internet, or exhibited. They may not be donated, sold, or otherwise transferred to another individual or repository without the written permission of The Museum of Modern Art Archives.

When publication is intended, publication-quality images must be obtained from SCALA Group, the Museum's agent for licensing and distribution of images to outside publishers and researchers.

If you wish to quote any of this material in a publication, an application for permission to publish must be submitted to the MoMA Archives. This stipulation also applies to dissertations and theses. All references to materials should cite the archival collection and folder, and acknowledge "The Museum of Modern Art Archives, New York."

Whether publishing an image or quoting text, you are responsible for obtaining any consents or permissions which may be necessary in connection with any use of the archival materials, including, without limitation, any necessary authorizations from the copyright holder thereof or from any individual depicted therein.

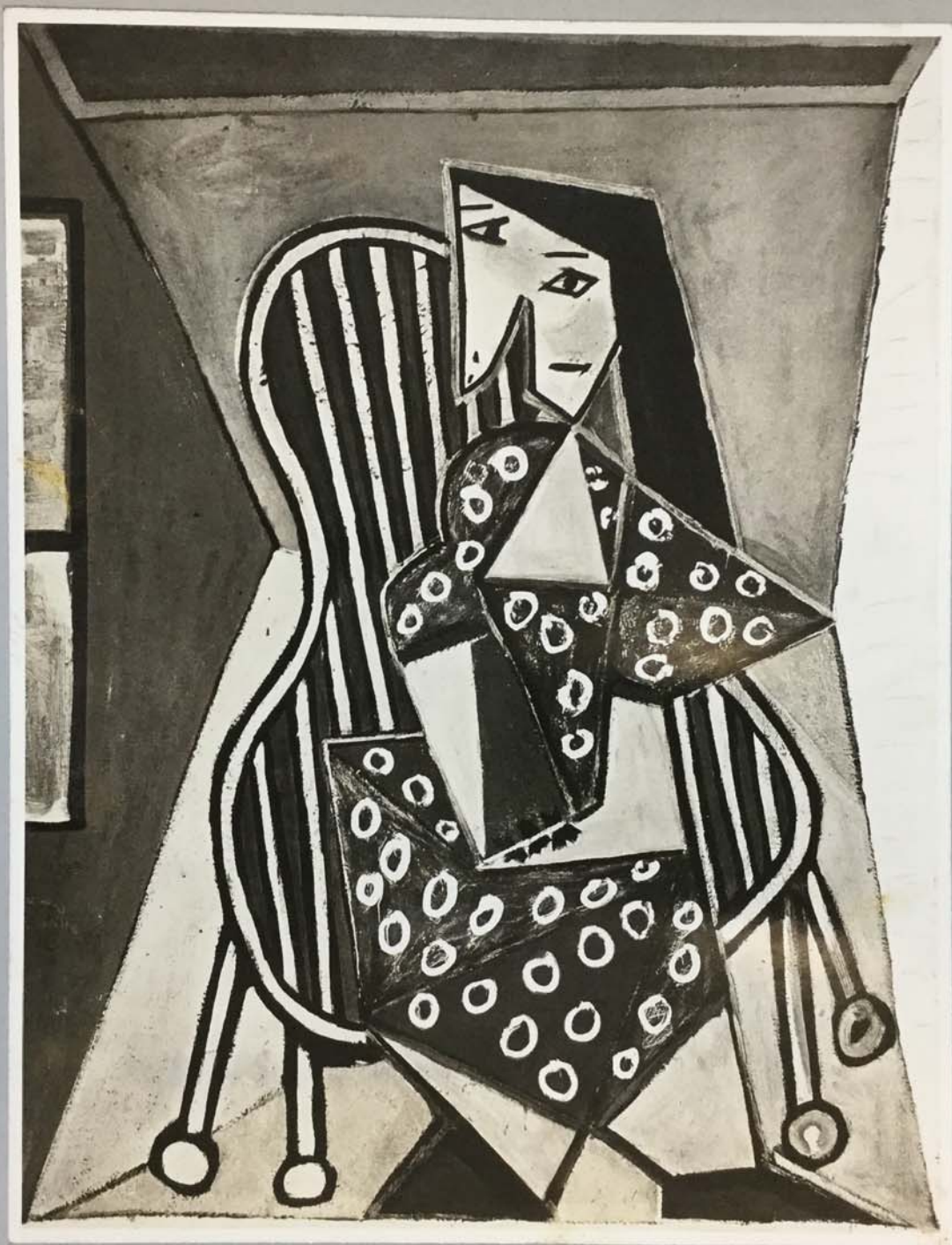
In requesting and accepting this reproduction, you are agreeing to indemnify and hold harmless The Museum of Modern Art, its agents and employees against all claims, demands, costs and expenses incurred by copyright infringement or any other legal or regulatory cause of action arising from the use of this material.

NOTICE: WARNING CONCERNING COPYRIGHT RESTRICTIONS

The copyright law of the United States (Title 17, United States Code) governs the making of photocopies or other reproductions of copyrighted material. Under certain conditions specified in the law, libraries and archives are authorized to furnish a photocopy or other reproduction. One of these specified conditions is that the photocopy or reproduction is not to be "used for any purpose other than private study, scholarship, or research." If a user makes a request for, or later uses, a photocopy or reproduction for purposes in excess of "fair use," that user may be liable for copyright infringement.

FOR STUDY PURPOSES ONLY. NOT FOR REPRODUCTION.

The Museum of Modern Art Archives, NY	Collection:	Series.Folder:
	AHB	XI.G.15



227. SEATED WOMAN September 1941
Oil, 51 1/8 x 38 1/4 inches
Owned by the artist

~~55683~~
Susami Neg.

FOR STUDY PURPOSES ONLY. NOT FOR REPRODUCTION.

The Museum of Modern Art Archives, NY	Collection:	Series.Folder:
	AHB	XI.G.15



228. HEAD OF A WOMAN July 16, 1941
Ink, 10 5/8 x 8 1/4 inches
Museum of Modern Art, New York

S-5544

FOR STUDY PURPOSES ONLY. NOT FOR REPRODUCTION.

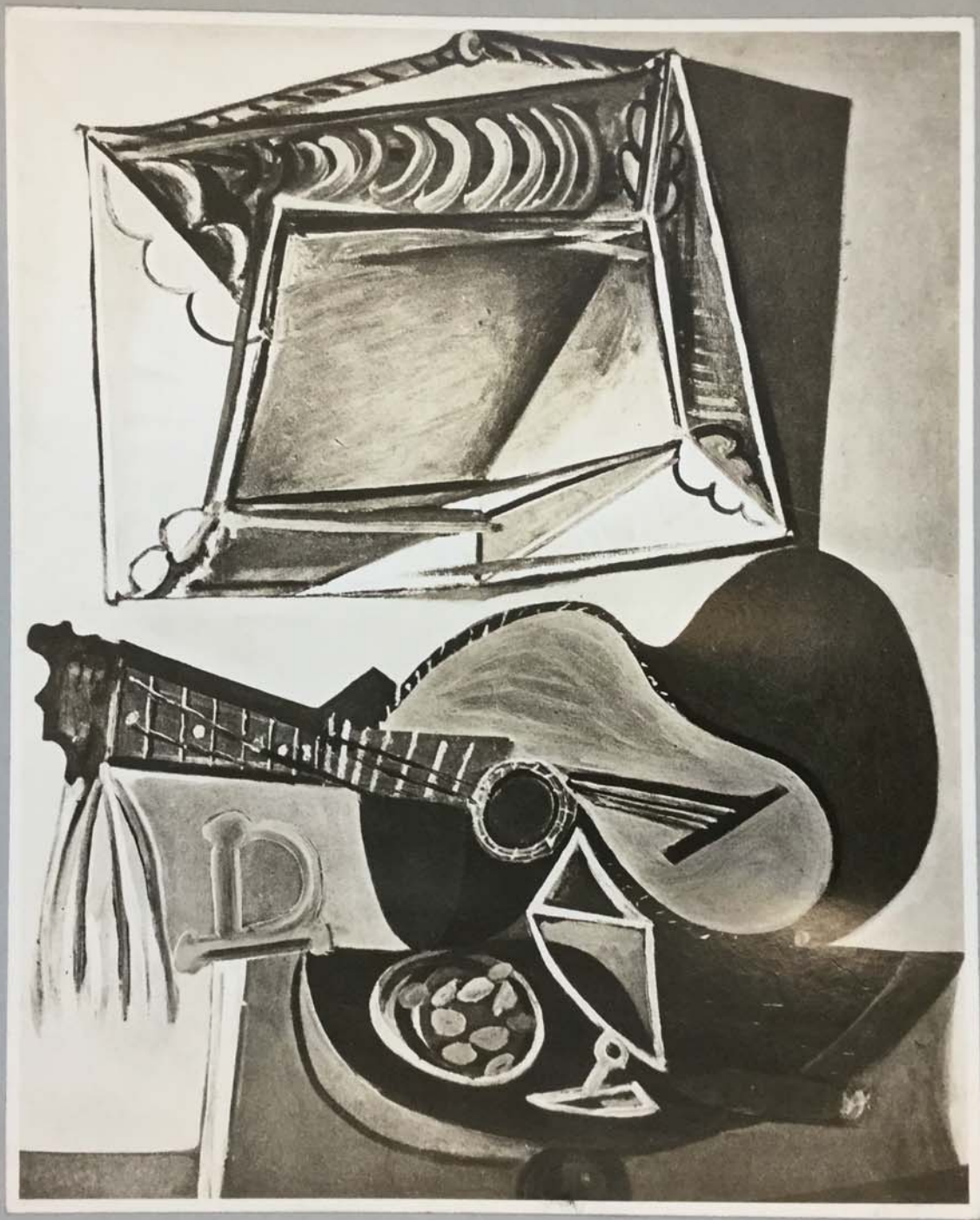
The Museum of Modern Art Archives, NY	Collection:	Series.Folder:
	AHB	XI.G.15



228. GIRL'S HEAD April 29, 1941
Gouache, 15 3/4 x 10 1/4 inches
Collection Pierre Loeb

FOR STUDY PURPOSES ONLY. NOT FOR REPRODUCTION.

The Museum of Modern Art Archives, NY	Collection:	Series.Folder:
	AHB	XI.G.15



231. STILL LIFE WITH A GUITAR 1942
Oil, 39 3/8 x 31 7/8 inches
Louise Léiris Gallery, Paris

S-5688

FOR STUDY PURPOSES ONLY. NOT FOR REPRODUCTION.

The Museum of Modern Art Archives, NY	Collection:	Series.Folder:
	AHB	XI. G. 15



236. CHAIR WITH GLADIOLAS September 17, 1943
Oil, 58 1/2 x 46 inches
Owned by the artist

*Photo Marc Vaux
Paris*

FOR STUDY PURPOSES ONLY. NOT FOR REPRODUCTION.

The Museum of Modern Art Archives, NY	Collection:	Series.Folder:
	AHB	XI.G.15



236. SKULL AND JUG August 15, 1943
Oil, 20 x 24 1/2 inches
Louise Léiris Gallery, Paris

Photo: Louise Léiris
Gallery
Paris.

FOR STUDY PURPOSES ONLY. NOT FOR REPRODUCTION.

The Museum of Modern Art Archives, NY	Collection:	Series.Folder:
	AHB	XI.G.15

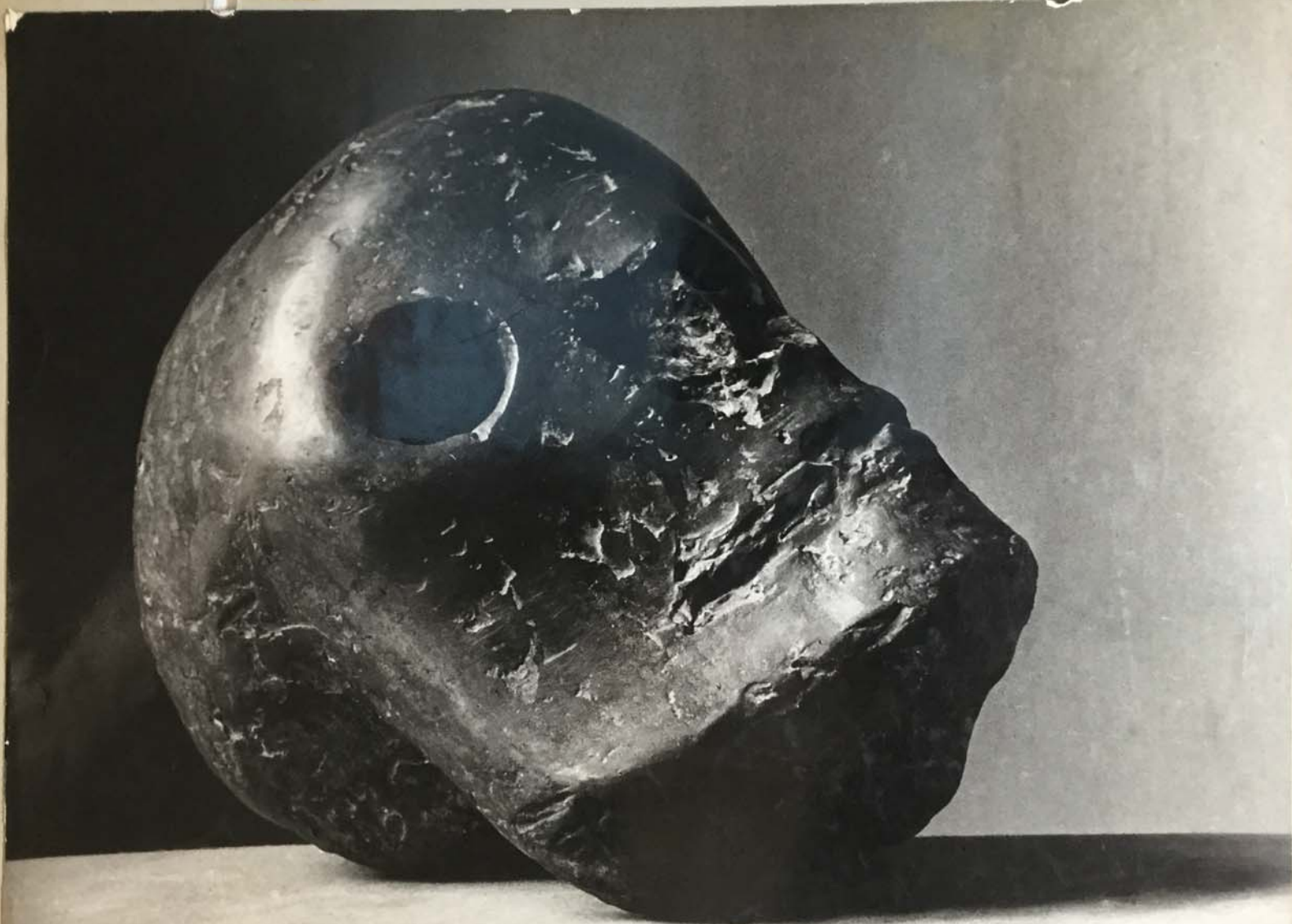


237. STILL LIFE WITH CANDLE April 4, 1944
Oil, 23 5/8 x 36 1/4 inches
Louise Léiris Gallery, Paris

*Photo: Louise Léiris
Gallery*

FOR STUDY PURPOSES ONLY. NOT FOR REPRODUCTION.

The Museum of Modern Art Archives, NY	Collection:	Series.Folder:
	AHB	XI.G.15



238. DEATH'S HEAD 1941
Bronze
Owned by the artist

BRASSTI
photo-

← No reproduction without copy neg MMA #1515
permission.

FOR STUDY PURPOSES ONLY. NOT FOR REPRODUCTION.

The Museum of Modern Art Archives, NY	Collection:	Series.Folder:
	AHB	XI.G.15



photo: Francis Lee.

242. DAUGHTER OF THE ARTIST August 1944
Watercolor
Owned by the artist
Photographed by Pfc. Francis Lee

FOR STUDY PURPOSES ONLY. NOT FOR REPRODUCTION.

The Museum of Modern Art Archives, NY	Collection:	Series.Folder:
	AHB	XI.G.15



Snapshot of Picasso.
Secured by Bill Lieberman
Museum staff.

MMA 13723

FOR STUDY PURPOSES ONLY. NOT FOR REPRODUCTION.

The Museum of Modern Art Archives, NY	Collection:	Series.Folder:
	AHB	XI. G. 15



244. PICASSO IN HIS STUDIO, September 1944
Photography by Lee Miller
Courtesy Vogue

FOR STUDY PURPOSES ONLY. NOT FOR REPRODUCTION.

The Museum of Modern Art Archives, NY	Collection:	Series.Folder:
	AHB	XI.G.15



248. PITCHER AND CANDLE February 16, 1945
Oil, 33 1/4 x 43 inches
Louis Carré Gallery, Paris

photo: Louis Carré
Paris:

FOR STUDY PURPOSES ONLY. NOT FOR REPRODUCTION.

The Museum of Modern Art Archives, NY	Collection:	Series.Folder:
	AHB	XI.G.15



249. PARIS February 26, 1945
Oil, 32 x 48 inches
Louis Carré Gallery, Paris

photo: Louis Carré Galerie
Paris.

The Museum of Modern Art Archives, NY	Collection:	Series.Folder:
	AHB	XI. G. 15



SER Ó NO SER

Ser ó no ser: aquesta es 'la qüestió.

SHAKESPEARE: *Hamlet*.

Ser ó no ser, amichs: la gran qüestió es aquesta;
ser ó no ser del tot: mostremnos francament.
Enrera aquell que fuig davant de la tempesta!
Enrera qui no té per tot un cor valent!

Enrera'l trovador qu'enfront la hipocresia,
ab ánima d'infant, tremola esporuguit!
Enrera aquell que tem la clara llum del día!
Enrera aquell que tem las ombas de la nit!

Enrera aquell cobart que'l pensament amaga
é hipòcrita, ab anhel, sols cerca'l benestar,
y ab cants de goig suprem tot lo mesquí amanyaga
y al raquistisme trist enlayra sens parar.

Enrera'l que poruch s'humilia á la presencia
dels ídols aixecats per la ignorancia arréu.
Enrera'l que afanyós el crit de la conciencia
ofega ab prechs sagrats resats á mitja veu.

Enrera'l vell ruí qu'assedegat sospira
per convertir en or la sanch dels sers humils.
Enrera'l bard novell si de la jove lira
tan sols arrenca planys y no cansons virils.

Avant, mos bonx amichs! Las ombas del misteri
aclarirém potents ab la sagrada llum
ab la sagrada llum qu'en un y altre hemisferi
de la rutina vil destrihi'l negre fum.

Mostremnos tal com som, mostrém l'ánima nostra;
els vicis y virtuts mesquinas aborrím;
reflecti'l pensament, sense temor, el rostre;
llegesca en ell tothóm el nou món que sentím.

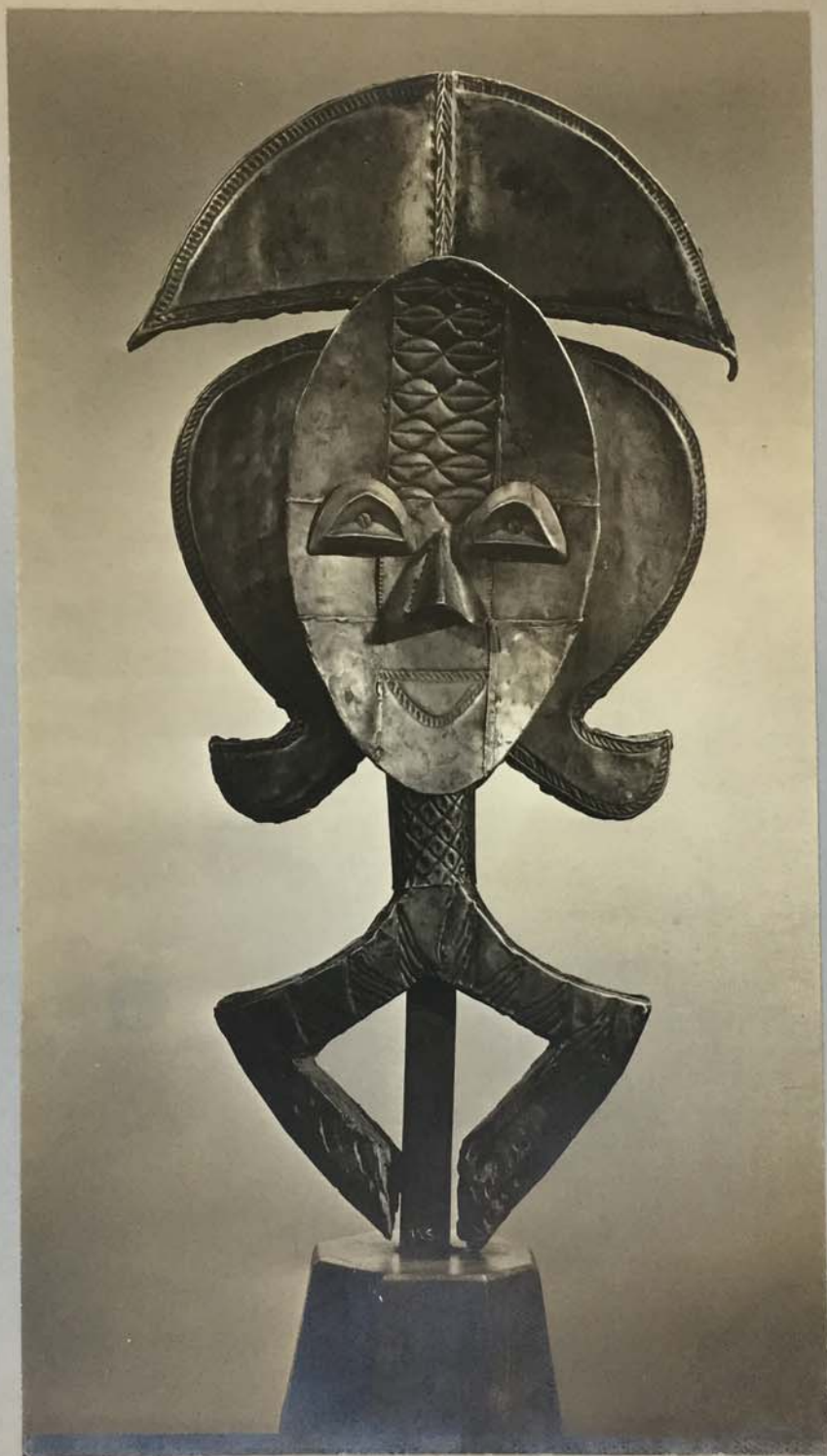
Ser ó no ser, amichs: la gran qüestió es aquesta;
ser ó no ser del tot: mostremnos francament.
Enrera aquell que fuig davant de la tempesta!
Enrera qui no té per tot un cor valent!

JOAN OLIVA BRIDGMAN.

Dibujó de Ruiz Picasso.

FOR STUDY PURPOSES ONLY. NOT FOR REPRODUCTION.

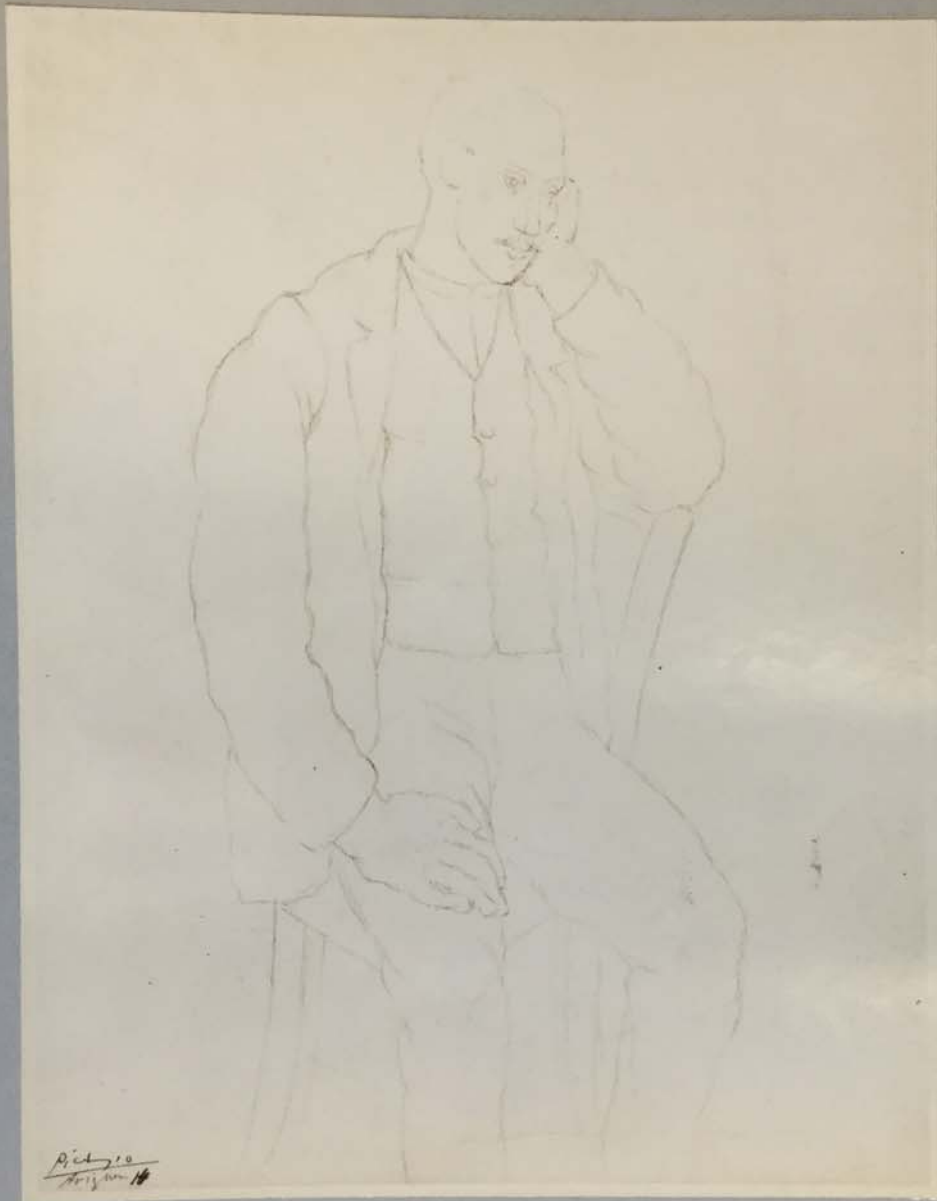
The Museum of Modern Art Archives, NY	Collection:	Series.Folder:
	AHB	XI.G.15



259. ANCESTRAL FIGURE
Gabun, Bakota
copper over wood, 22 3/4" high

FOR STUDY PURPOSES ONLY. NOT FOR REPRODUCTION.

The Museum of Modern Art Archives, NY	Collection:	Series.Folder:
	AHB	XI.G.15



261. SEATED MAN 1914
Pencil, 12 3/4 x 9 3/4 inches
Private collection

photo from Parke Bernet
Galleries.

FOR STUDY PURPOSES ONLY. NOT FOR REPRODUCTION.

The Museum of Modern Art Archives, NY	Collection:	Series.Folder:
	AHB	XI.G.15

Wooden
Mask
Itemba African

S-2547

S-2548

Borrowed 4/19/62
by Puccinotti
for TV ^{to be} returned.

FOR STUDY PURPOSES ONLY. NOT FOR REPRODUCTION.

The Museum of Modern Art Archives, NY	Collection:	Series.Folder:
	AHB	XI.G.15



266. BOY ON ROCKS, Henri Rousseau 1895-97
Oil, 21 1/2 x 17 3/4 inches
The Chester Dale Collection

July photo.

FOR STUDY PURPOSES ONLY. NOT FOR REPRODUCTION.

The Museum of Modern Art Archives, NY	Collection:	Series.Folder:
	AHB	XI.G.15



269. STILL LIFE WITH SHEEP'S SKULL
October 6, 1939
Oil
Louise Leiris Gallery, Paris

Galerie Louise Leiris, Paris.
photo source

FOR STUDY PURPOSES ONLY. NOT FOR REPRODUCTION.

The Museum of Modern Art Archives, NY	Collection:	Series.Folder:
	AHB	XI.G.15



309. NIGHT FISHING AT ANTIBES August 1939
Oil, 6 ft. 9 inches x 11 ft. 4 inches
Private collection

Photo from
Victoria & Albert
Museum, 1945.