

## **CONDITIONS OF USE FOR THIS PDF**

The images contained within this PDF may be used for private study, scholarship, and research only. They may not be published in print, posted on the internet, or exhibited. They may not be donated, sold, or otherwise transferred to another individual or repository without the written permission of The Museum of Modern Art Archives.

When publication is intended, publication-quality images must be obtained from SCALA Group, the Museum's agent for licensing and distribution of images to outside publishers and researchers.

If you wish to quote any of this material in a publication, an application for permission to publish must be submitted to the MoMA Archives. This stipulation also applies to dissertations and theses. All references to materials should cite the archival collection and folder, and acknowledge "The Museum of Modern Art Archives, New York."

Whether publishing an image or quoting text, you are responsible for obtaining any consents or permissions which may be necessary in connection with any use of the archival materials, including, without limitation, any necessary authorizations from the copyright holder thereof or from any individual depicted therein.

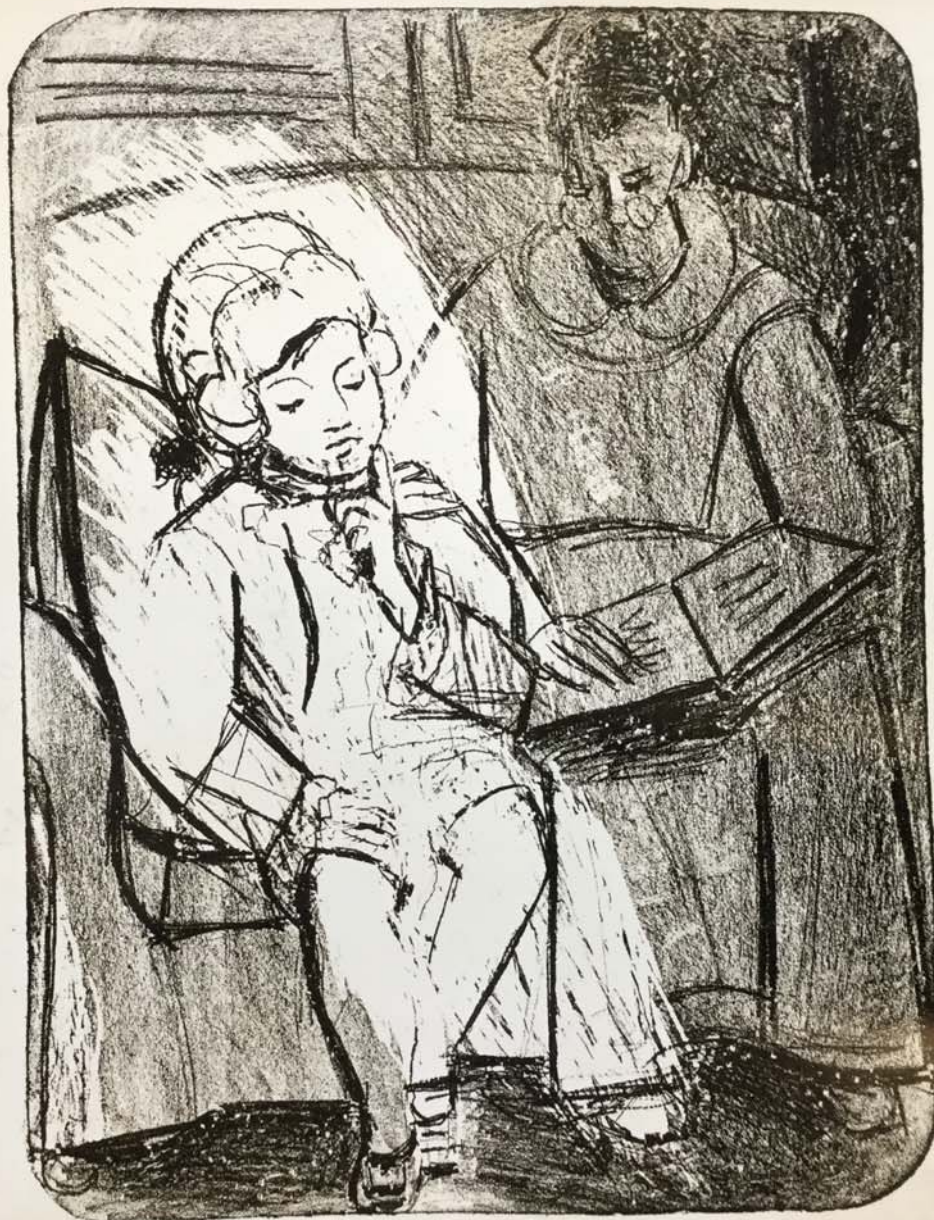
In requesting and accepting this reproduction, you are agreeing to indemnify and hold harmless The Museum of Modern Art, its agents and employees against all claims, demands, costs and expenses incurred by copyright infringement or any other legal or regulatory cause of action arising from the use of this material.

### **NOTICE: WARNING CONCERNING COPYRIGHT RESTRICTIONS**

The copyright law of the United States (Title 17, United States Code) governs the making of photocopies or other reproductions of copyrighted material. Under certain conditions specified in the law, libraries and archives are authorized to furnish a photocopy or other reproduction. One of these specified conditions is that the photocopy or reproduction is not to be "used for any purpose other than private study, scholarship, or research." If a user makes a request for, or later uses, a photocopy or reproduction for purposes in excess of "fair use," that user may be liable for copyright infringement.

FOR STUDY PURPOSES ONLY. NOT FOR REPRODUCTION.

The Museum of Modern Art Archives, NY	Collection:	Series Folder:
	AHB	XL.G.14



*Picasso*

141. READING (LA LECTURE) 1926  
Lithograph, 13 x 9 7/8 inches  
Museum of Modern Art, New York  
Gift of Mrs. John D. Rockefeller, Jr.

S-6235

FOR STUDY PURPOSES ONLY. NOT FOR REPRODUCTION.

The Museum of Modern Art Archives, NY	Collection:	Series.Folder:
	AHB	XI. G. 14



548

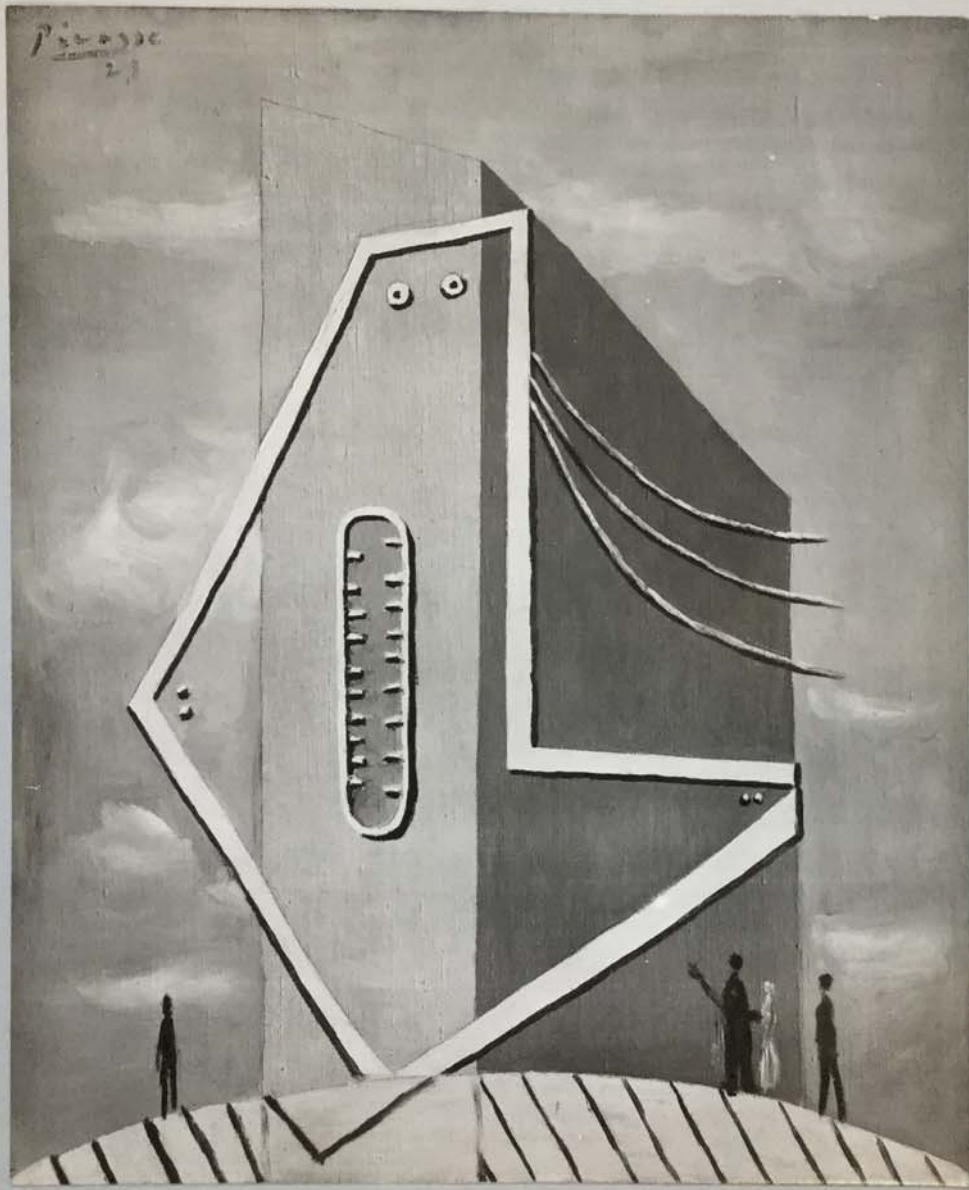
*P. Picasso*

158. FACE 1928  
Lithograph, 8 x 5 1/2"  
Museum of Modern Art, New York  
Gift of Mrs. John D. Rockefeller, Jr.

S-6668

FOR STUDY PURPOSES ONLY. NOT FOR REPRODUCTION.

The Museum of Modern Art Archives, NY	Collection:	Series.Folder:
	AHB	ΣC.G.14

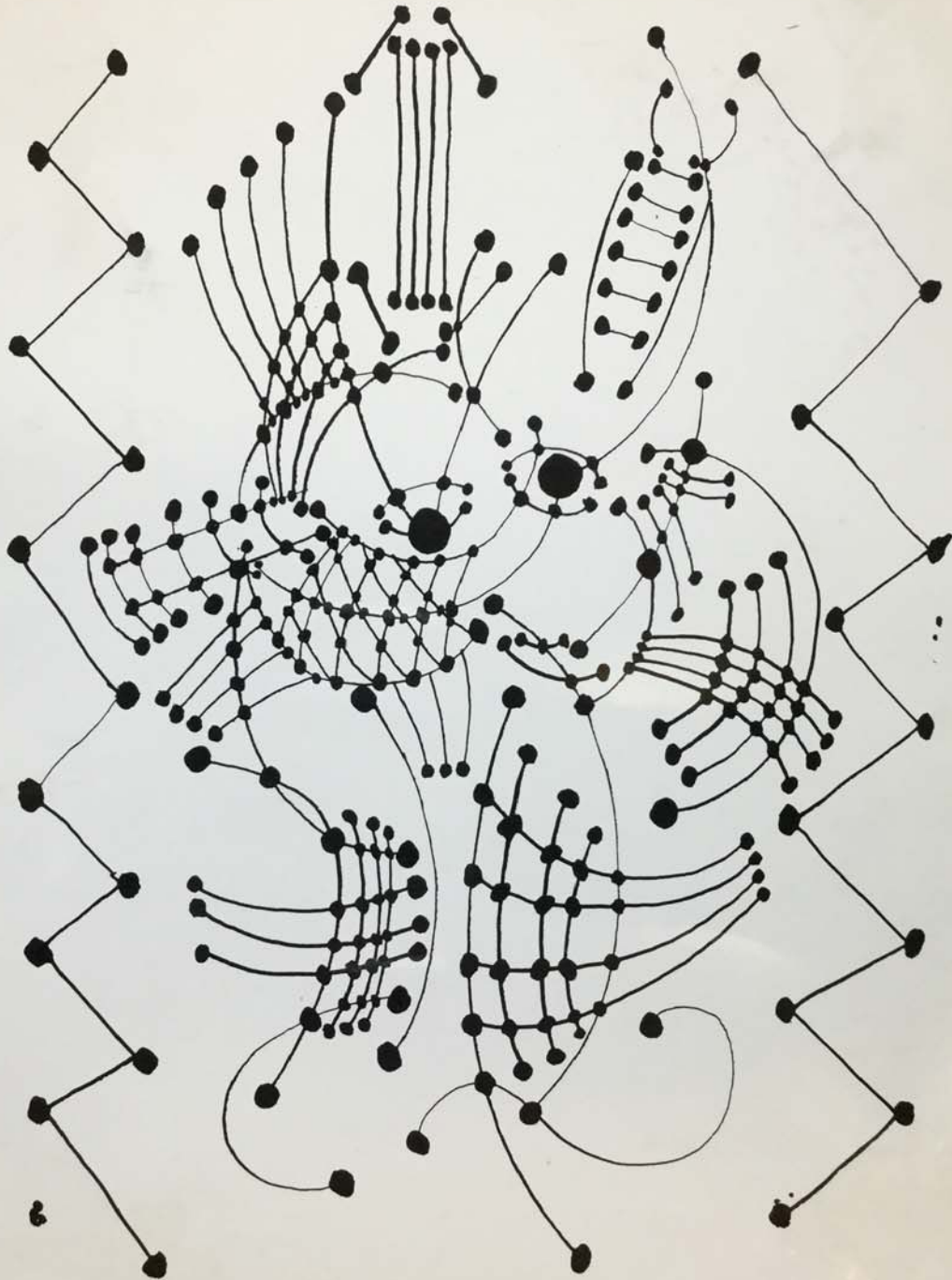


165. PROJECT FOR A MONUMENT (WOMAN'S HEAD)  
1929  
Oil

photo: Galerie Simon  
Paris.

FOR STUDY PURPOSES ONLY. NOT FOR REPRODUCTION.

The Museum of Modern Art Archives, NY	Collection:	Series.Folder:
	AHB	ΣC. G. 14



PICASSO, PABLO

Copy neg. from Le Chef d'Oeuvre Inconnu, 1931  
edition.  
Cover of 50 Years Book - Barr.

LENSCRAFT COPY  
NEG. #5974

FOR STUDY PURPOSES ONLY. NOT FOR REPRODUCTION.

The Museum of Modern Art Archives, NY	Collection:	Series.Folder:
	AHB	ΣC . G. 14



171. CONSTRUCTION c. 1931  
Wrought iron, 82 3/4 inches high  
Owned by the artist

photo source  
not known.  
#  
(copy neg MHA 4/22)  
(made 10/55)

FOR STUDY PURPOSES ONLY. NOT FOR REPRODUCTION.

The Museum of Modern Art Archives, NY	Collection:	Series.Folder:
	AHB	ΣC . G. 14

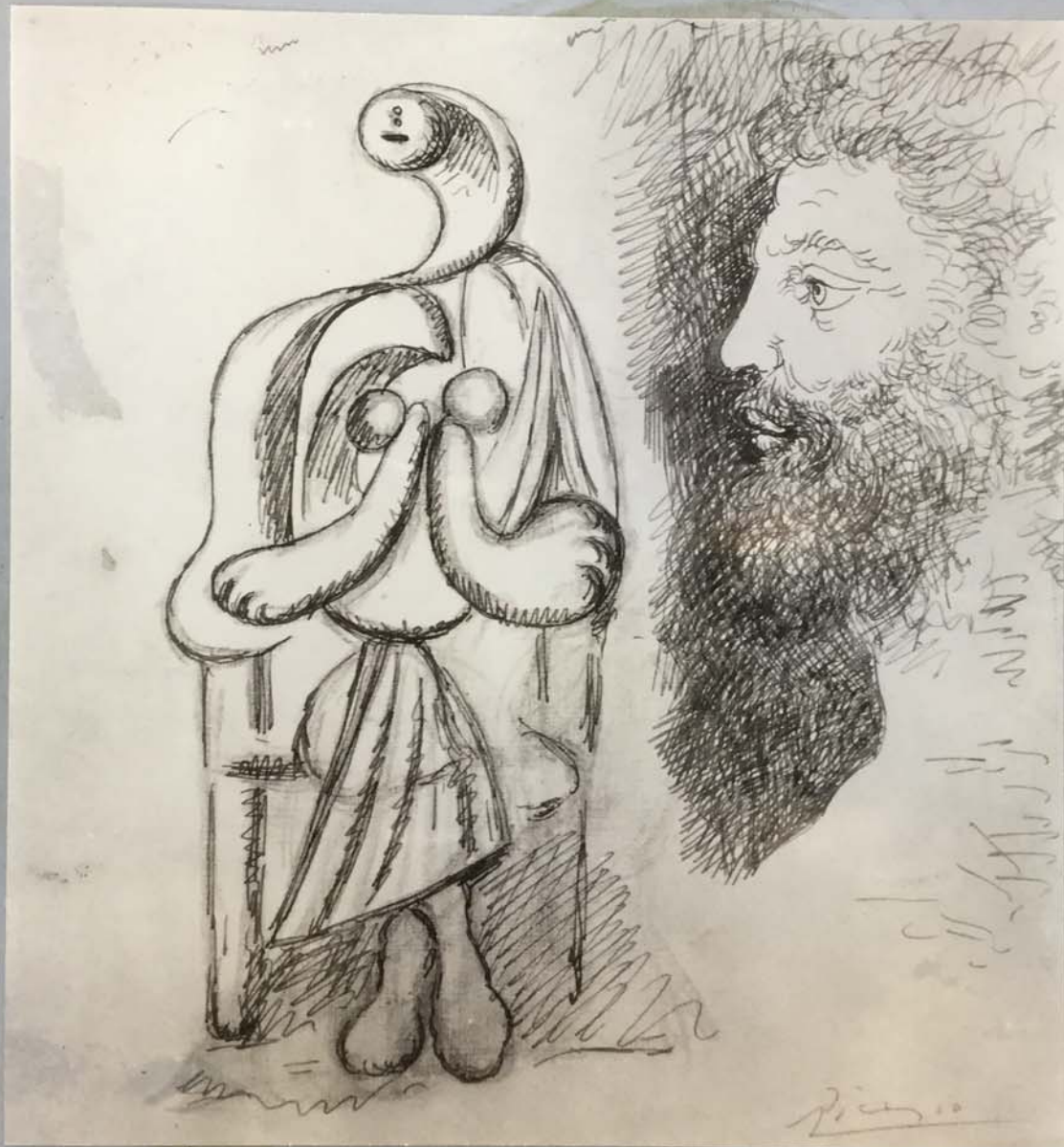


172. FIGURE 1931  
Bronze, 21 1/2 inches high  
Collection Mrs. Meric Gallery

photo: Studley photo  
N.Y.

FOR STUDY PURPOSES ONLY. NOT FOR REPRODUCTION.

The Museum of Modern Art Archives, NY	Collection:	Series Folder:
	AHB	XI . G. 14

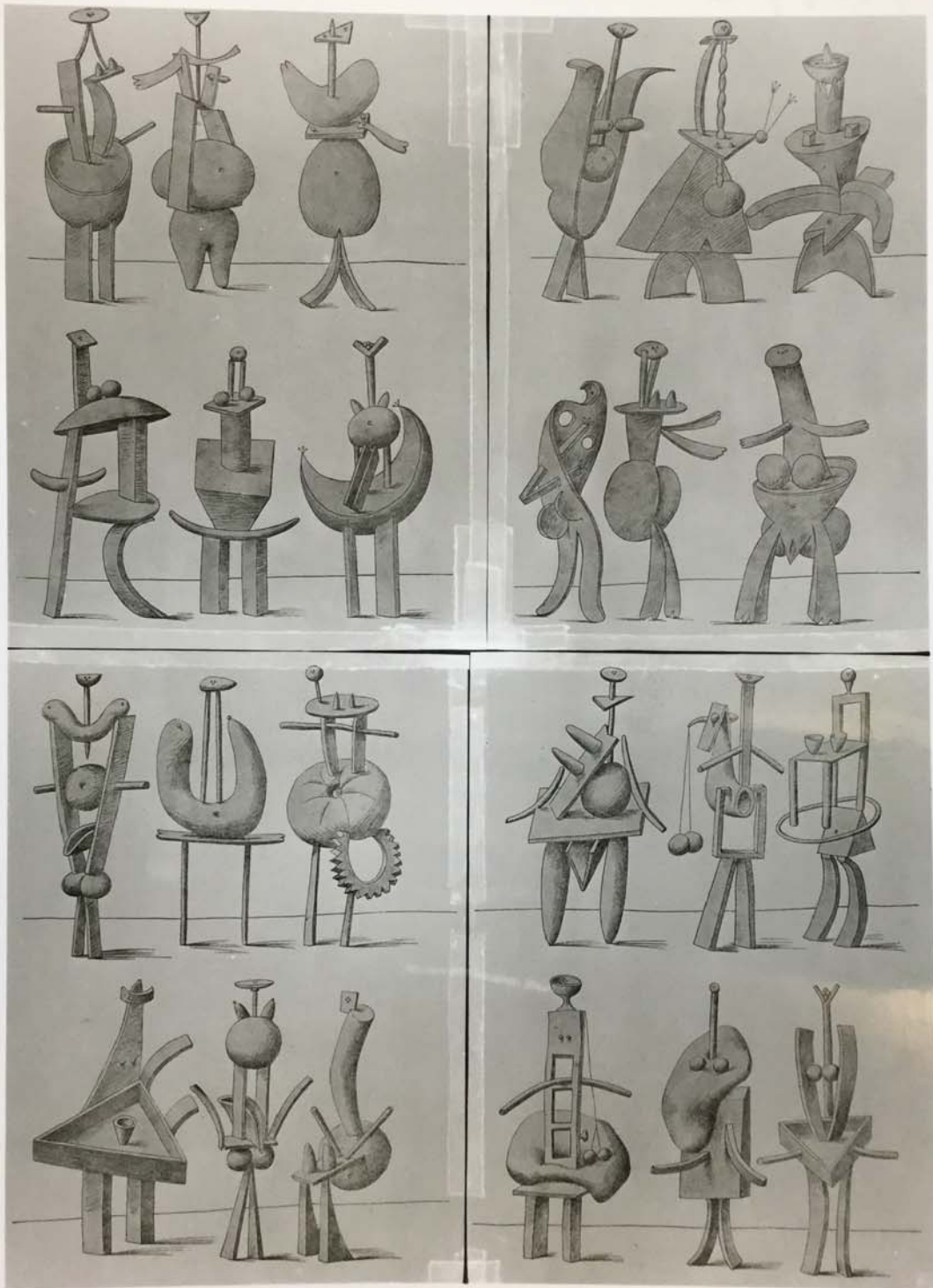


Chrysler photo.

172. SEATED WOMAN AND BEARDED HEAD 1932  
Ink and pencil, 11 1/8 x 10 1/8"  
Collection Walter P. Chrysler, Jr.

FOR STUDY PURPOSES ONLY. NOT FOR REPRODUCTION.

The Museum of Modern Art Archives, NY	Collection:	Series.Folder:
	AHB	ΣC. G. 14



MMA 1463

183. AN ANATOMY February 22, 1933  
Pencil  
Reproduced from Minotaure, bibl. 183

MMA 1463

FOR STUDY PURPOSES ONLY. NOT FOR REPRODUCTION.

The Museum of Modern Art Archives, NY	Collection:	Series.Folder:
	AHB	XL.G.14



*Small handwritten text, possibly a signature or date, located in the bottom right corner of the drawing.*

Senami Neg.

S-2510

184. TWO FIGURES ON THE BEACH July 28, 1935  
Ink, 15 3/4 x 19 5/8 inches  
Museum of Modern Art, New York

FOR STUDY PURPOSES ONLY. NOT FOR REPRODUCTION.

The Museum of Modern Art Archives, NY	Collection:	Series.Folder:
	AHB	XC.G.14



185. THE BALCONY. August 1, 1933  
Gouache, 16 x 19 7/8 inches

FOR STUDY PURPOSES ONLY. NOT FOR REPRODUCTION.

The Museum of Modern Art Archives, NY	Collection:	Series.Folder:
	AHB	XI.G.14



187. THE BULL July 16, 1934  
Oil, 13 1/4 x 21 3/4 inches  
Collection Keith Warner

*Biglow Gallery  
photo.*

FOR STUDY PURPOSES ONLY. NOT FOR REPRODUCTION.

The Museum of Modern Art Archives, NY	Collection:	Series.Folder:
	AHB	XI . G. 14



189. GIRL WRITING 1934  
Oil, 63 7/8 x 51 3/8 inches  
Collection Peter Watson

S-2590

FOR STUDY PURPOSES ONLY. NOT FOR REPRODUCTION.

The Museum of Modern Art Archives, NY	Collection:	Series.Folder:
	AHB	XI. G. 14

PICASSO: FIFTY YEARS OF HIS ART  
by Alfred H. Barr, Jr.

The Museum of Modern Art, N.Y.

Note: These photographs correspond with the  
plates in the book. Numbers on the label  
correspond to page numbers in the book.

VOLUME II

This was not an exhibition, but a book  
See also Exhibition 91: PICASSO, 1939-40.

FOR STUDY PURPOSES ONLY. NOT FOR REPRODUCTION.

The Museum of Modern Art Archives, NY	Collection:	Series Folder:
	AHB	XI. G. 14



191. HARLEQUIN (PROJECT FOR A MONUMENT)  
March 10, 1935  
Oil, 24 1/2 x 20 inches  
Albright Art Gallery, Buffalo, N. Y.

Albright Art  
Gallery photo.

FOR STUDY PURPOSES ONLY. NOT FOR REPRODUCTION.

The Museum of Modern Art Archives, NY	Collection:	Series, Folder:
	AHB	XL. G. 14



194. ILLUSTRATIONS FOR ELUARD, La Barre  
d'appui 1936  
Etching, plate for four designs,  
12 1/2 x 8 1/2 inches  
Collection Miss Caroline C. Coudert

5-6227

FOR STUDY PURPOSES ONLY. NOT FOR REPRODUCTION.

The Museum of Modern Art Archives, NY	Collection:	Series.Folder:
	AHB	XC.G.14



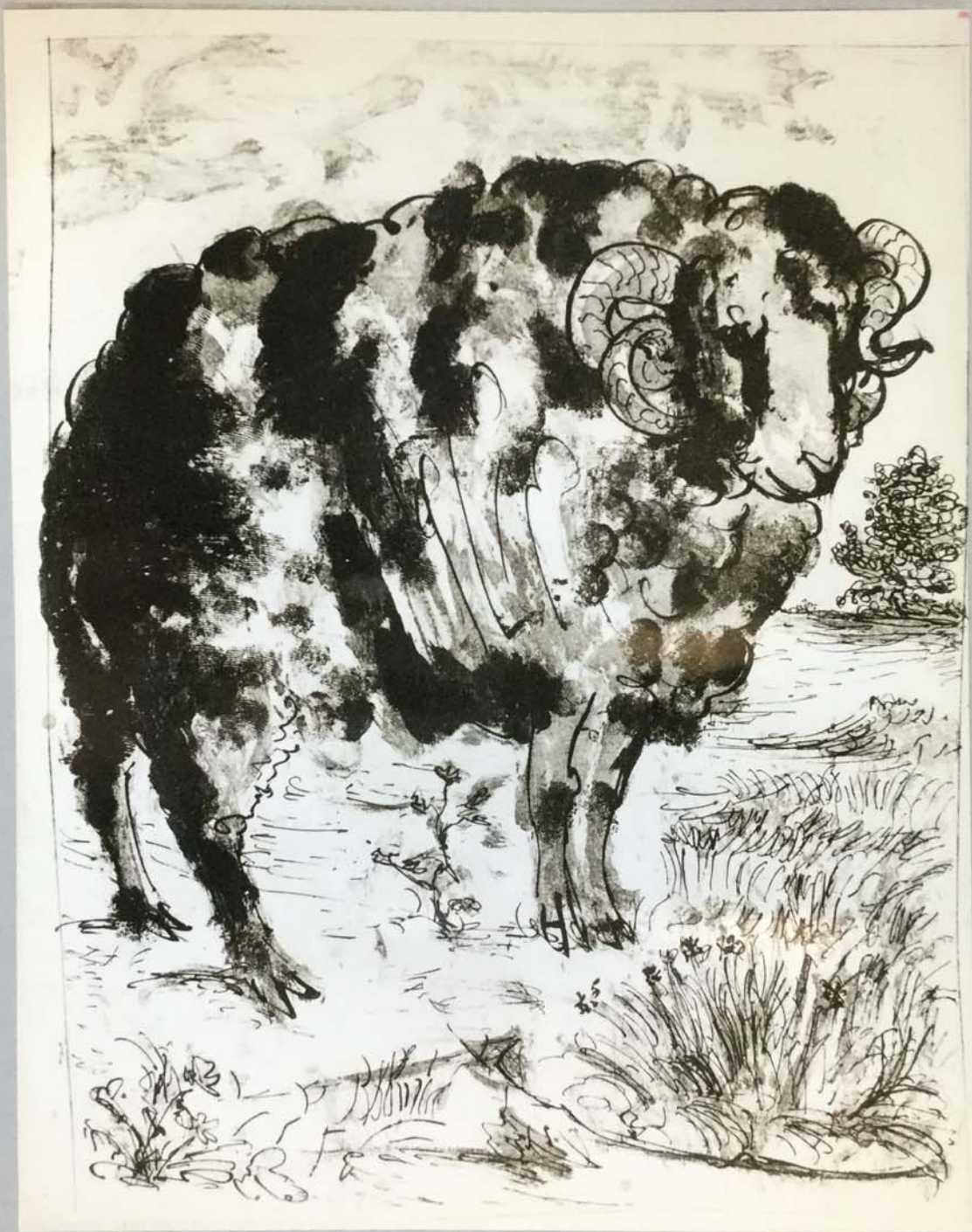
204. HORSE AND WOMAN WITH DEAD CHILD  
May 8, 1937  
Pencil on white paper, 9 1/2 x 17 7/8"  
Owned by the artist

S-5913

Sketch for *Guernica mural*.

FOR STUDY PURPOSES ONLY. NOT FOR REPRODUCTION.

The Museum of Modern Art Archives, NY	Collection:	Series.Folder:
	AHB	XC.G.14



210. RHM 1937-38  
Aquatint  
Illustration for biffon, Histoire  
naturelle

Photo from  
Una Johnson

FOR STUDY PURPOSES ONLY. NOT FOR REPRODUCTION.

The Museum of Modern Art Archives, NY	Collection:	Series.Folder:
	AHB	XI . G. 14



216. BUTTERFLY HUNTER 1938  
Oil  
Owned by the artist

Photo: Marc Vaux  
Paris.

FOR STUDY PURPOSES ONLY. NOT FOR REPRODUCTION.

The Museum of Modern Art Archives, NY	Collection:	Series.Folder:
	AHB	XI . G. 14



219. DANCER WITH A TAMBOURINE 1938  
Etching with aquatint, 26 1/4 x 20 1/8"  
Museum of Modern Art, New York

Perr's Galleries  
photo.  
also S-6452

FOR STUDY PURPOSES ONLY. NOT FOR REPRODUCTION.

The Museum of Modern Art Archives, NY	Collection:	Series.Folder:
	AHB	XI.G.14



S-6360

223. PORTRAIT OF D. M. December 30, 1939  
Oil  
Repro. from Eluard, bibl. 142

FOR STUDY PURPOSES ONLY. NOT FOR REPRODUCTION.

The Museum of Modern Art Archives, NY	Collection:	Series.Folder:
	AHB	XI . G. 14



224. STILL LIFE WITH EELS March 27, 1940  
Oil, 29 1/2 x 37 inches  
Louise Léiris Gallery, Paris

photo: Galerie Simon  
Paris.

FOR STUDY PURPOSES ONLY. NOT FOR REPRODUCTION.

The Museum of Modern Art Archives, NY	Collection:	Series.Folder:
	AHB	ΣC . G. 14



224. HEAD March 3, 1940  
Oil on paper, 25 1/2 x 18 1/2 inches  
Collection Pierre Loeb