

## **CONDITIONS OF USE FOR THIS PDF**

The images contained within this PDF may be used for private study, scholarship, and research only. They may not be published in print, posted on the internet, or exhibited. They may not be donated, sold, or otherwise transferred to another individual or repository without the written permission of The Museum of Modern Art Archives.

When publication is intended, publication-quality images must be obtained from SCALA Group, the Museum's agent for licensing and distribution of images to outside publishers and researchers.

If you wish to quote any of this material in a publication, an application for permission to publish must be submitted to the MoMA Archives. This stipulation also applies to dissertations and theses. All references to materials should cite the archival collection and folder, and acknowledge "The Museum of Modern Art Archives, New York."

Whether publishing an image or quoting text, you are responsible for obtaining any consents or permissions which may be necessary in connection with any use of the archival materials, including, without limitation, any necessary authorizations from the copyright holder thereof or from any individual depicted therein.

In requesting and accepting this reproduction, you are agreeing to indemnify and hold harmless The Museum of Modern Art, its agents and employees against all claims, demands, costs and expenses incurred by copyright infringement or any other legal or regulatory cause of action arising from the use of this material.

### **NOTICE: WARNING CONCERNING COPYRIGHT RESTRICTIONS**

The copyright law of the United States (Title 17, United States Code) governs the making of photocopies or other reproductions of copyrighted material. Under certain conditions specified in the law, libraries and archives are authorized to furnish a photocopy or other reproduction. One of these specified conditions is that the photocopy or reproduction is not to be "used for any purpose other than private study, scholarship, or research." If a user makes a request for, or later uses, a photocopy or reproduction for purposes in excess of "fair use," that user may be liable for copyright infringement.

FOR STUDY PURPOSES ONLY. NOT FOR REPRODUCTION.

The Museum of Modern Art Archives, NY	Collection:	Series.Folder:
	AHB	XI. G. 13

PICASSO: FIFTY YEARS OF HIS  
ART

By Alfred H. Barr, Jr.

The Museum of Modern Art,  
New York, 1946

Note: These are the photographs  
corresponding with the  
plates in the book. The  
numbers referred to on each  
label are the page numbers  
in the book.

Note: This was not an exhibition  
but a book; although many  
of the photographs herewith  
also appeared in the  
1939-40 Picasso exhibition.

See Exhibition book No. 91.

FOR STUDY PURPOSES ONLY. NOT FOR REPRODUCTION.

The Museum of Modern Art Archives, NY	Collection:	Series.Folder:
	AHB	XI. G. 13



PICASSO, Pablo  
Mother and Child. 1922.  
Collection Mrs. Nelson Rockefeller

S-8001

not in book - but used as Christmas card,

FOR STUDY PURPOSES ONLY. NOT FOR REPRODUCTION.

The Museum of Modern Art Archives, NY	Collection:	Series.Folder:
	AHB	XI. G. 13



17. HEADS AND FIGURES 1900  
Conté crayon, 5 1/8 x 8 1/4 inches  
Collection Ivan L. Best

Chrysler Neg.  
NOT available

FOR STUDY PURPOSES ONLY. NOT FOR REPRODUCTION.

The Museum of Modern Art Archives, NY	Collection:	Series.Folder:
	AHB	XI. G. 13



40. PICASSO, Pablo  
AT THE CIRCUS, 1905  
Drypoint, 8 5/8 x 5 1/2"

Collection of the Museum of Modern  
Art, New York.

Leuscraft Neg.  
# 5645.

FOR STUDY PURPOSES ONLY. NOT FOR REPRODUCTION.

The Museum of Modern Art Archives, NY	Collection:	Series.Folder:
	AHB	XI. G. 13

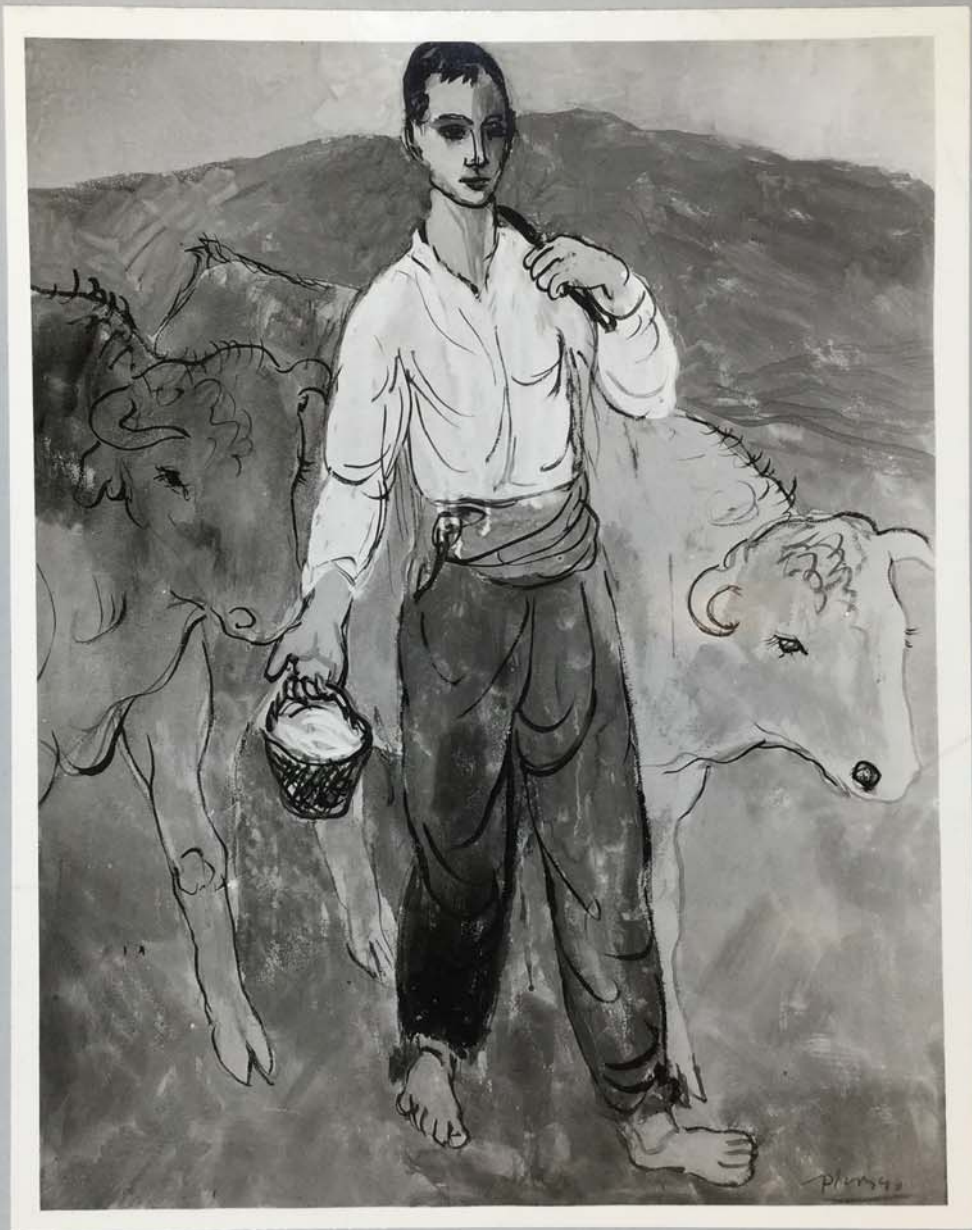


43. LA COIFFURE 1905-06?  
Oil 68 7/8 x 39 1/4 inches  
Museum of Modern Art, New York

Sunami Neg.  
# 2035

FOR STUDY PURPOSES ONLY. NOT FOR REPRODUCTION.

The Museum of Modern Art Archives, NY	Collection:	Series.Folder:
	AHB	XI. G. 13



48. BOY WITH CATTLE 1906  
Gouache, 23 1/2 x 18 1/2 inches  
Columbus Gallery of Fine Arts,  
Columbus, Ohio

Columbus Gallery  
Negative.

FOR STUDY PURPOSES ONLY. NOT FOR REPRODUCTION.

The Museum of Modern Art Archives, NY	Collection:	Series.Folder:
	AHB	XI. G. 13



Photo:  
Galeric Simon  
Paris.

61. FRIENDSHIP 1908  
Oil, 59 3/4 x 39 3/4 inches  
Museum of Modern Western Art, Moscow

FOR STUDY PURPOSES ONLY. NOT FOR REPRODUCTION.

The Museum of Modern Art Archives, NY	Collection:	Series.Folder:
	AHB	XI. G. 13

D

letter in Zeuos IIa #60

FOR STUDY PURPOSES ONLY. NOT FOR REPRODUCTION.

The Museum of Modern Art Archives, NY	Collection:	Series.Folder:
	AHB	XI. G. 13



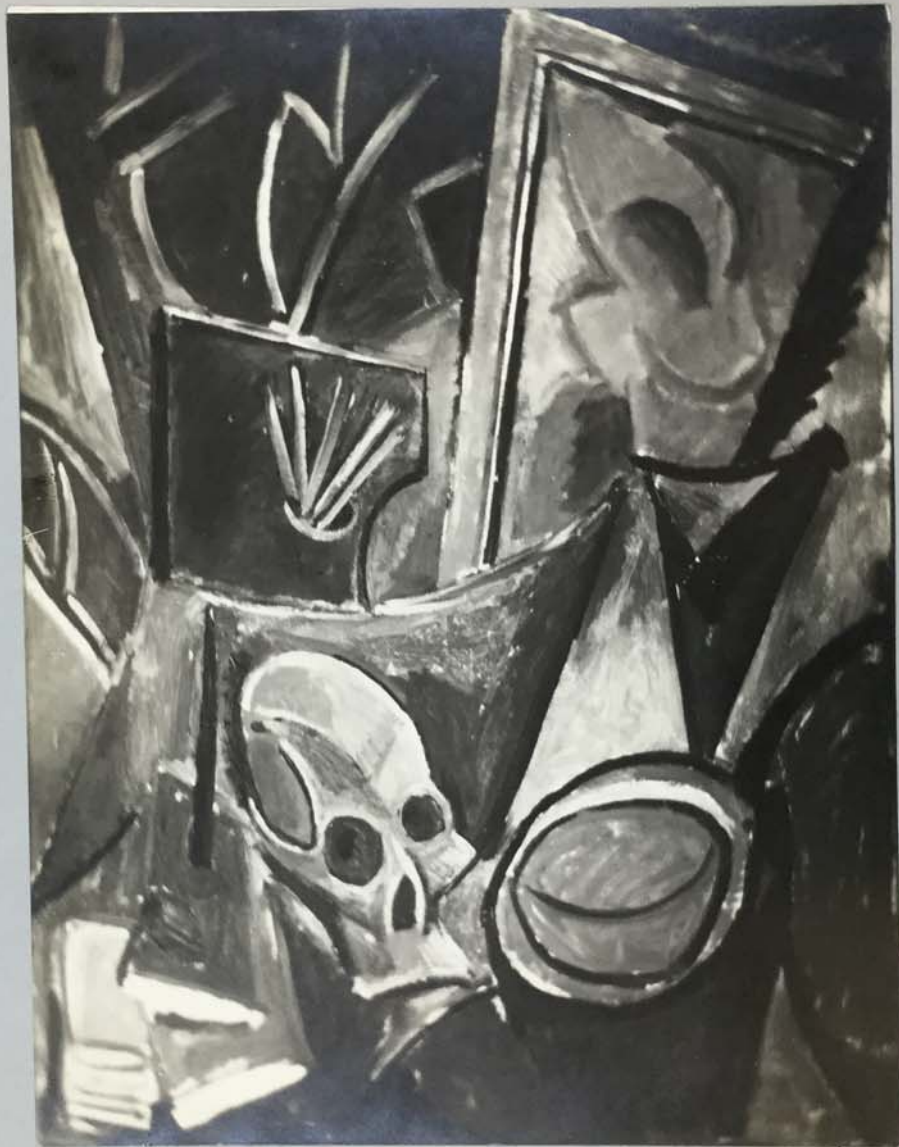
62. PEASANT WOMAN 1908  
Oil, 32 1/4 x 25 5/8 inches  
Museum of Modern Western Art, Moscow

MMA 12041

photo: Valerie Simon  
Paris.

FOR STUDY PURPOSES ONLY. NOT FOR REPRODUCTION.

The Museum of Modern Art Archives, NY	Collection:	Series.Folder:
	AHB	XI. G. 13



64. COMPOSITION WITH A SKULL 1907  
Oil, 45 1/4 x 34 5/8 inches  
Museum of Modern Western Art, Moscow

photo:  
Galerie Simon  
Paris

FOR STUDY PURPOSES ONLY. NOT FOR REPRODUCTION.

The Museum of Modern Art Archives, NY	Collection:	Series.Folder:
	AHB	XI. G. 13



66. HEAD 1909  
Gouache, 24 x 18 inches  
Museum of Modern Art, New York  
Gift of Mrs. Saidie A. May

Juley photo:  
249

FOR STUDY PURPOSES ONLY. NOT FOR REPRODUCTION.

The Museum of Modern Art Archives, NY	Collection:	Series.Folder:
	AHB	XI. G. 13



68. FERNANDE 1909  
Oil, 24 1/4 x 16 3/4 inches  
Museum of Modern Art, New York  
Extended loan from Henry Church

Senami Neg.  
9-8170

FOR STUDY PURPOSES ONLY. NOT FOR REPRODUCTION.

The Museum of Modern Art Archives, NY	Collection:	Series.Folder:
	AHB	XI. G. 13



S-4167

69. WOMAN'S HEAD 1909  
Bronze, 16 1/4 inches high  
Museum of Modern Art, New York

FOR STUDY PURPOSES ONLY. NOT FOR REPRODUCTION.

The Museum of Modern Art Archives, NY	Collection:	Series.Folder:
	AHB	XI. G. 13



12. PICASSO 1901  
Drawing by Ramón Casas  
Published in Pèl & Ploma, Barcelona

~~XXXXXXXXXX~~  
Sunami Neg.

FOR STUDY PURPOSES ONLY. NOT FOR REPRODUCTION.

The Museum of Modern Art Archives, NY	Collection:	Series.Folder:
	AHB	XI. G. 13

①

Franklin

⊗ 75<sup>1</sup>/<sub>2</sub>

FOR STUDY PURPOSES ONLY. NOT FOR REPRODUCTION.

The Museum of Modern Art Archives, NY	Collection:	Series.Folder:
	AHB	XI. G. 13



S-4365

69. PORTRAIT OF BRAQUE 1909  
Oil, 24 1/4 x 19 3/4 inches  
Collection Edward A. Bragaline

FOR STUDY PURPOSES ONLY. NOT FOR REPRODUCTION.

The Museum of Modern Art Archives, NY	Collection:	Series.Folder:
	AHB	XI. G. 13



14. ROSES 1898  
Oil, 14 1/4 x 16 3/4 inches  
Bignou Gallery, New York

P. R. Picasso  
pp 10, 11

Bignou Gallery  
Negative

FOR STUDY PURPOSES ONLY. NOT FOR REPRODUCTION.

The Museum of Modern Art Archives, NY	Collection:	Series.Folder:
	AHB	XI. G. 13

09 ⊗

○

○

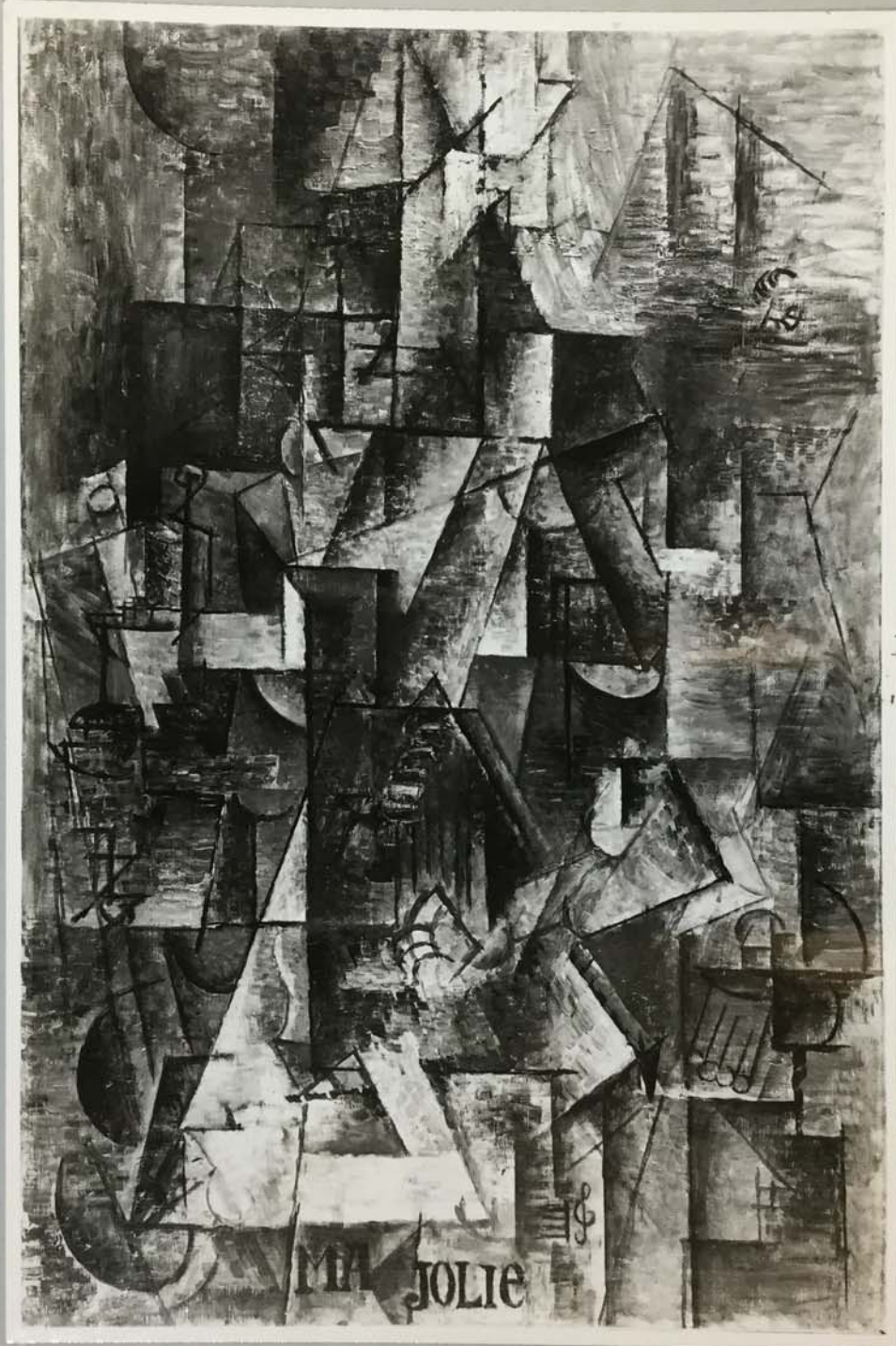
④

D-5

8/81

FOR STUDY PURPOSES ONLY. NOT FOR REPRODUCTION.

The Museum of Modern Art Archives, NY	Collection:	Series.Folder:
	AHB	XI. G. 13

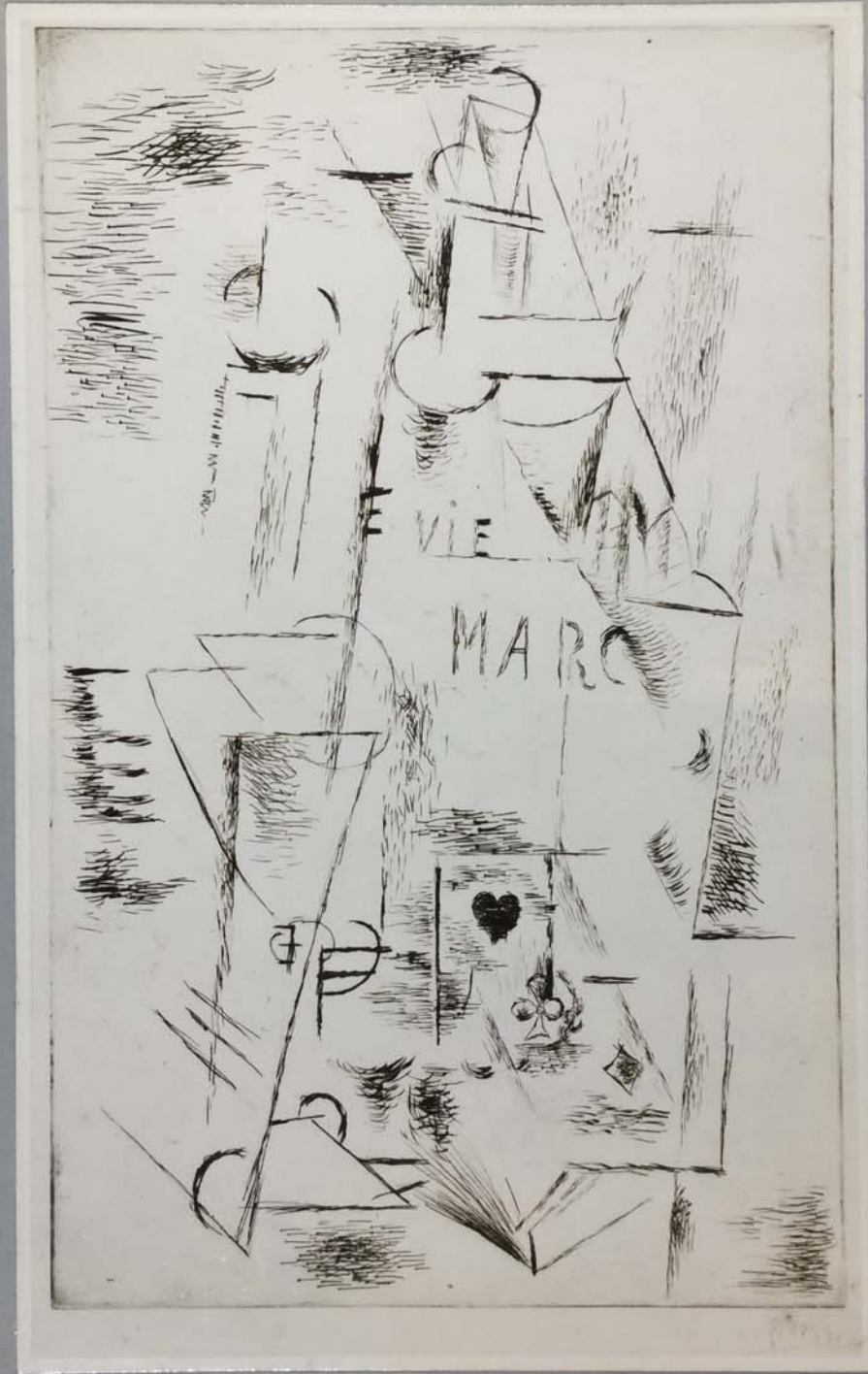


76. "MA JOLIE" (WOMAN WITH A GUITAR) 1911-12  
Oil, 39 3/8 x 25 3/4 inches  
Museum of Modern Art, New York

*Sunami Neg.*  
S-6516

FOR STUDY PURPOSES ONLY. NOT FOR REPRODUCTION.

The Museum of Modern Art Archives, NY	Collection:	Series.Folder:
	AHB	XI. G. 13

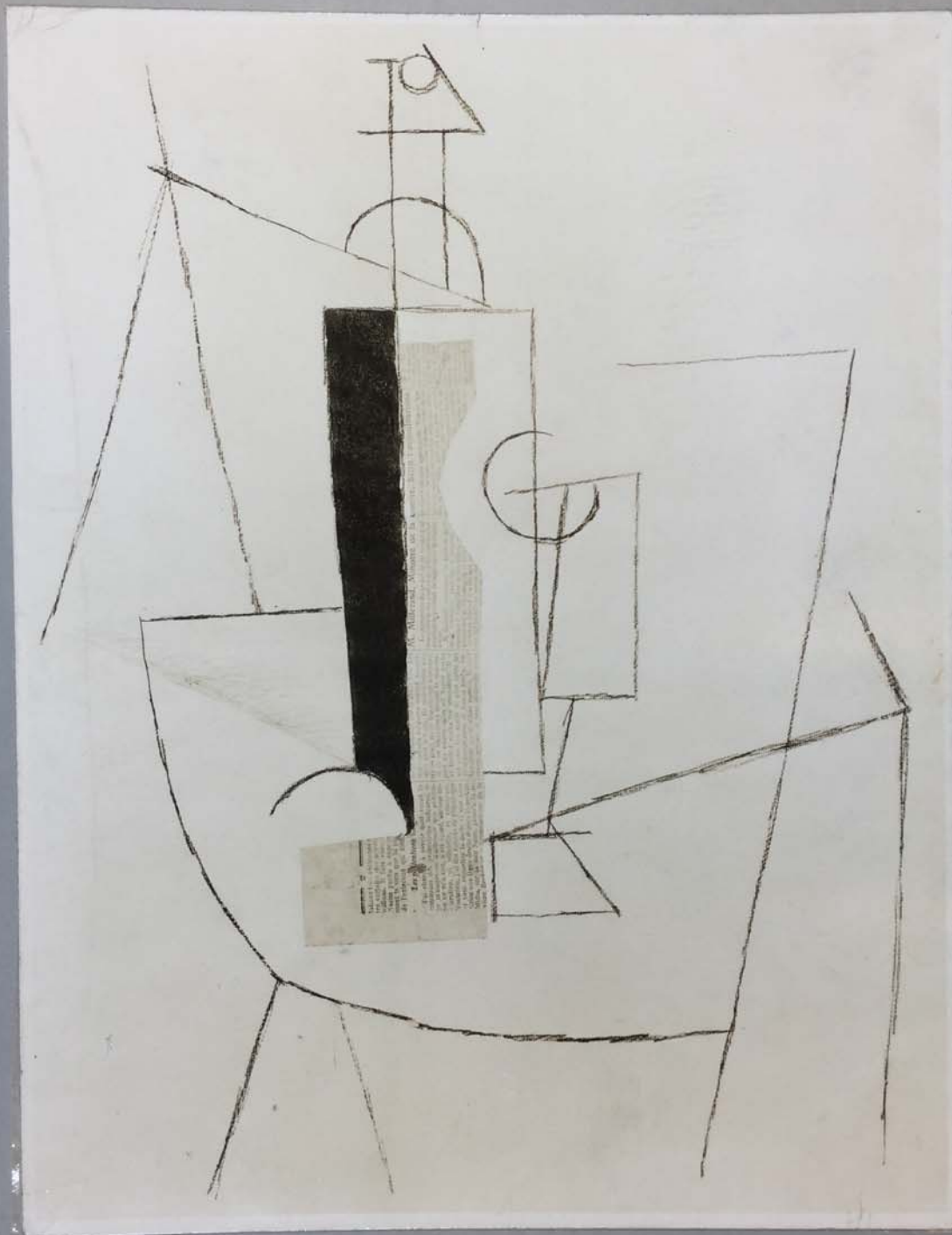


S-6289

78. STILL LIFE 1912  
Drypoint, 19 5/8 x 12 1/8 inches  
Buchholz Gallery, New York

FOR STUDY PURPOSES ONLY. NOT FOR REPRODUCTION.

The Museum of Modern Art Archives, NY	Collection:	Series.Folder:
	AHB	XI. G. 13

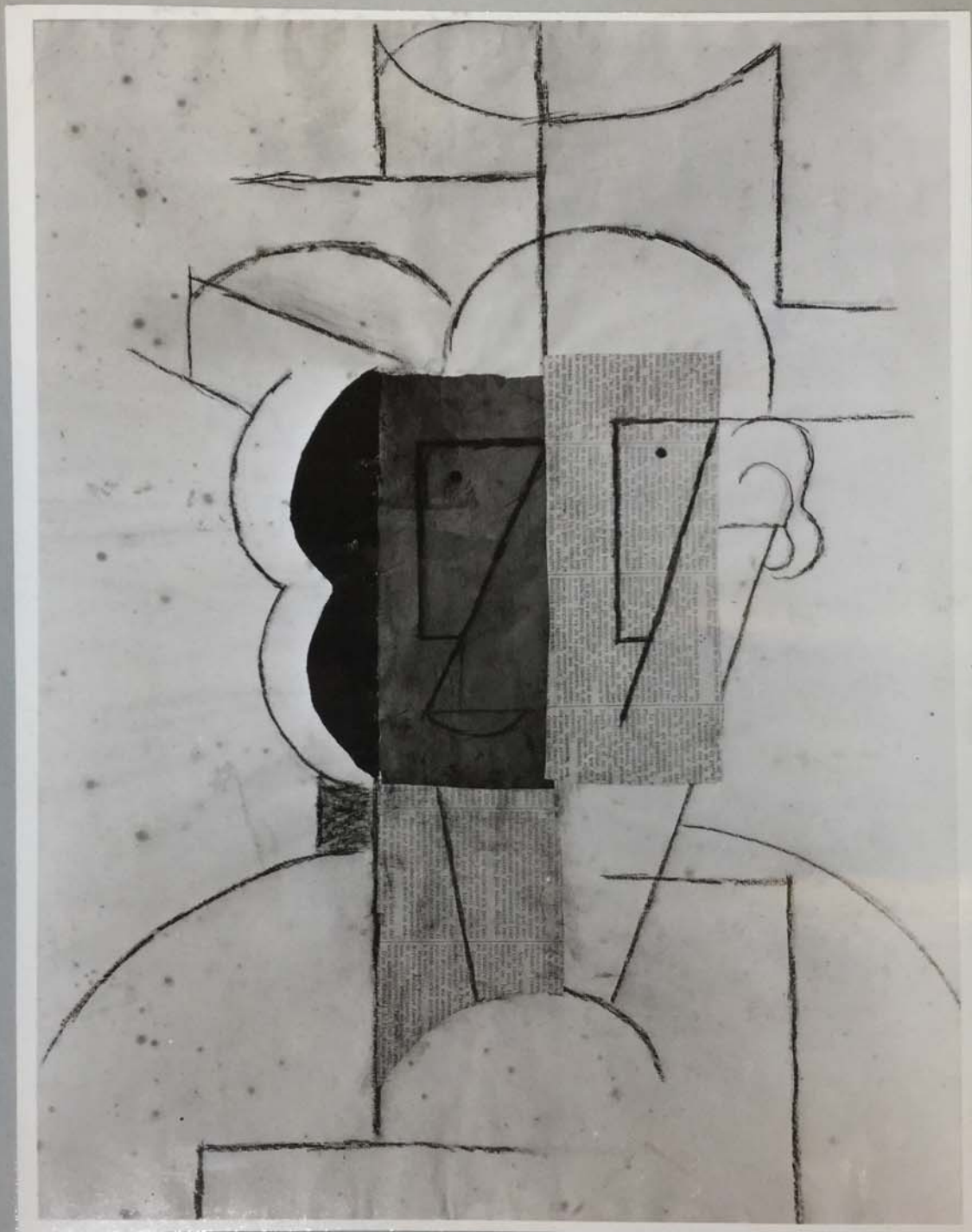


*Senami Neg.*  
*(5-1316)*

80. STILL LIFE 1912-13  
Pasted paper and charcoal, 24 $\frac{1}{4}$  x 18 $\frac{1}{2}$ "  
Collection Alfred Stieglitz

FOR STUDY PURPOSES ONLY. NOT FOR REPRODUCTION.

The Museum of Modern Art Archives, NY	Collection:	Series.Folder:
	AHB	XI. G. 13



80. MAN WITH A HAT 1913  
Pasted paper, charcoal, ink,  
24 1/2 x 18 1/4 inches  
Museum of Modern Art, New York

S-1629

FOR STUDY PURPOSES ONLY. NOT FOR REPRODUCTION.

The Museum of Modern Art Archives, NY	Collection:	Series.Folder:
	AHB	XI. G. 13



85. STUDENT WITH A PIPE 1914  
Oil and pasted paper, 28 3/4 x 23 1/4"  
Collection Miss Gertrude Stein

photo: Galerie Simon  
Paris.

FOR STUDY PURPOSES ONLY. NOT FOR REPRODUCTION.

The Museum of Modern Art Archives, NY	Collection:	Series.Folder:
	AHB	XI. G. 13

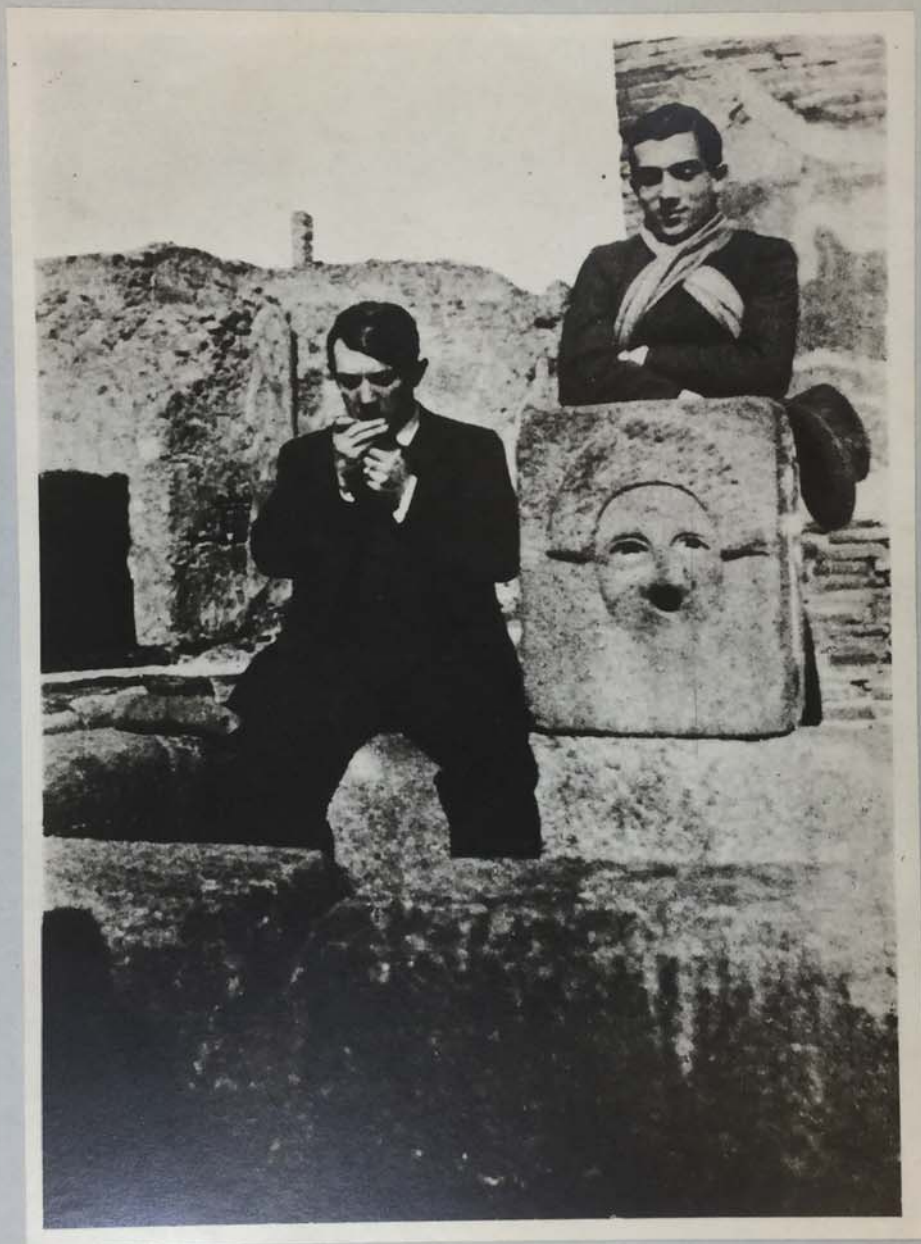


86. STUDY FOR A CONSTRUCTION 1912  
Ink, 6 3/4 x 4 7/8 inches  
Museum of Modern Art, New York

*Suzuki Neg.*  
S-4958

FOR STUDY PURPOSES ONLY. NOT FOR REPRODUCTION.

The Museum of Modern Art Archives, NY	Collection:	Series.Folder:
	AHB	XI. G. 13



96. PICASSO AND MASSINE AT POMPEII 1917  
Snapshot.

Photos: Dance Archive  
MMA - has neg.

FOR STUDY PURPOSES ONLY. NOT FOR REPRODUCTION.

The Museum of Modern Art Archives, NY	Collection:	Series.Folder:
	AHB	XI. G. 13



photo source  
not known.

106. SLEEPING PEASANTS. 1919  
Colored ink or crayon, 12 1/4x18 7/8"

FOR STUDY PURPOSES ONLY. NOT FOR REPRODUCTION.

The Museum of Modern Art Archives, NY	Collection:	Series Folder:
	AHB	XI. G. 13



107. TWO PRESENTS 1919  
Pencil, 18 1/2 x 23 1/2 inches  
Collection Wright Ludington

photo: Santa Barbara  
Museum of Art.

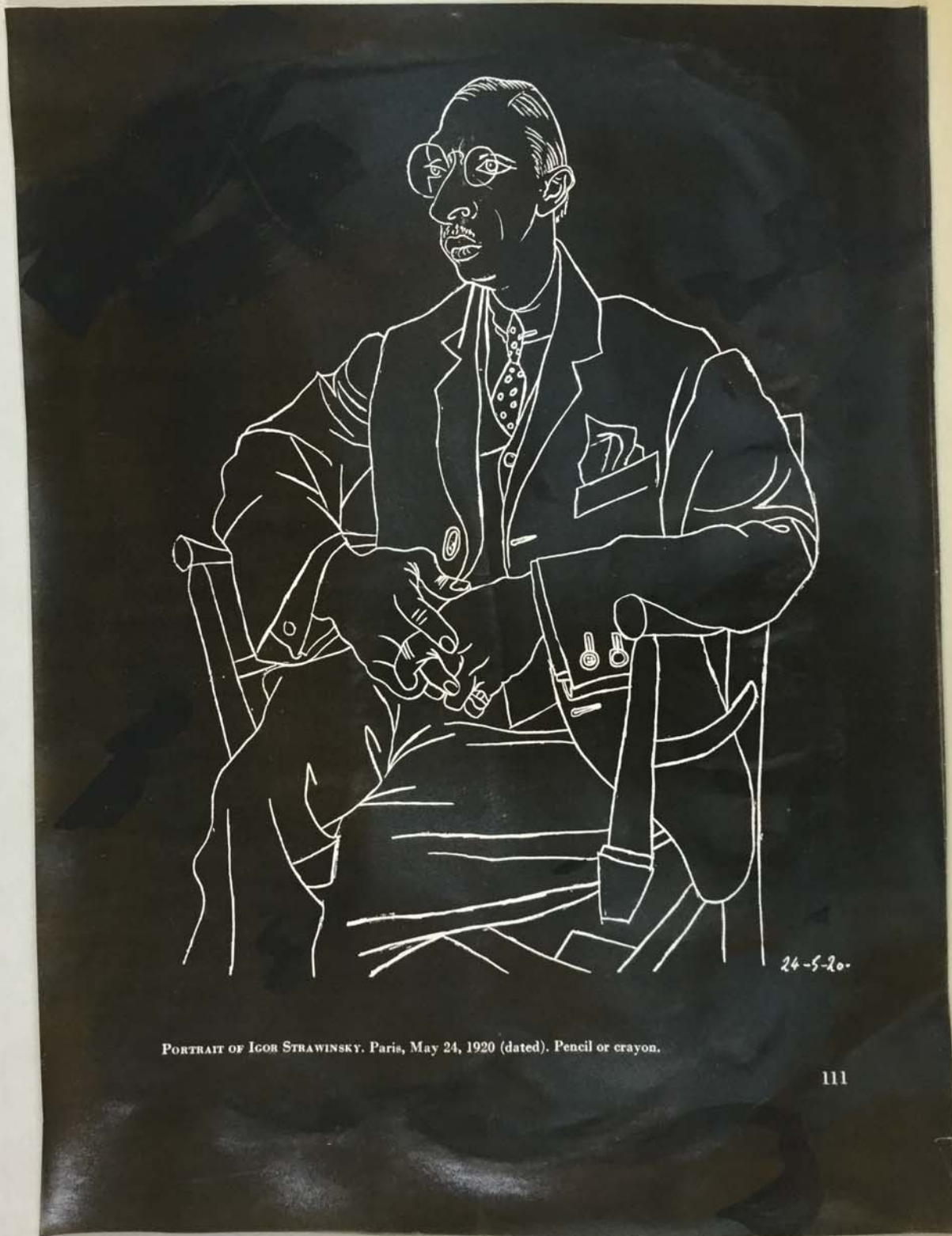
FOR STUDY PURPOSES ONLY. NOT FOR REPRODUCTION.

The Museum of Modern Art Archives, NY	Collection:	Series.Folder:
	AHB	XI. G. 13



PORTRAIT OF IGOR STRAVINSKY. Paris, May 24, 1920 (dated). Pencil or crayon.

The Museum of Modern Art Archives, NY	Collection:	Series.Folder:
	AHB	XI. G. 13



PORTRAIT OF IGOR STRAVINSKY. Paris, May 24, 1920 (dated). Pencil or crayon.

FOR STUDY PURPOSES ONLY. NOT FOR REPRODUCTION.

The Museum of Modern Art Archives, NY	Collection:	Series.Folder:
	AHB	XI. G. 13



Photo: Rosenberg.

124. MOTHER AND CHILD 1921  
Oil, 55 7/8 x 63 3/4 inches