

CONDITIONS OF USE FOR THIS PDF

The images contained within this PDF may be used for private study, scholarship, and research only. They may not be published in print, posted on the internet, or exhibited. They may not be donated, sold, or otherwise transferred to another individual or repository without the written permission of The Museum of Modern Art Archives.

When publication is intended, publication-quality images must be obtained from SCALA Group, the Museum's agent for licensing and distribution of images to outside publishers and researchers.

If you wish to quote any of this material in a publication, an application for permission to publish must be submitted to the MoMA Archives. This stipulation also applies to dissertations and theses. All references to materials should cite the archival collection and folder, and acknowledge "The Museum of Modern Art Archives, New York."

Whether publishing an image or quoting text, you are responsible for obtaining any consents or permissions which may be necessary in connection with any use of the archival materials, including, without limitation, any necessary authorizations from the copyright holder thereof or from any individual depicted therein.

In requesting and accepting this reproduction, you are agreeing to indemnify and hold harmless The Museum of Modern Art, its agents and employees against all claims, demands, costs and expenses incurred by copyright infringement or any other legal or regulatory cause of action arising from the use of this material.

NOTICE: WARNING CONCERNING COPYRIGHT RESTRICTIONS

The copyright law of the United States (Title 17, United States Code) governs the making of photocopies or other reproductions of copyrighted material. Under certain conditions specified in the law, libraries and archives are authorized to furnish a photocopy or other reproduction. One of these specified conditions is that the photocopy or reproduction is not to be "used for any purpose other than private study, scholarship, or research." If a user makes a request for, or later uses, a photocopy or reproduction for purposes in excess of "fair use," that user may be liable for copyright infringement.

FOR STUDY PURPOSES ONLY. NOT FOR REPRODUCTION.

The Museum of Modern Art Archives, NY	Collection:	Series.Folder:
	AHB	SI . C . 32



FOR STUDY PURPOSES ONLY. NOT FOR REPRODUCTION.

The Museum of Modern Art Archives, NY	Collection:	Series.Folder:
	AHB	SI. C. 32

Pablo Picasso
"Femmes et enfants au bord de la mer" - Boisgeloup, 1934
Oil on canvas, 81 x 100 cm.

white
violet
violet black
violet
red
gray
light gray
light green
white
black
light green
violet
light blue
black
light green
violet
yellow
violet
orange
violet
orange
violet
green
violet
white
black
violet
green
orange
violet
white
orange

FOR STUDY PURPOSES ONLY. NOT FOR REPRODUCTION.

The Museum of Modern Art Archives, NY	Collection:	Series.Folder:
	AHB	XI. C. 32



FOR STUDY PURPOSES ONLY. NOT FOR REPRODUCTION.

The Museum of Modern Art Archives, NY	Collection:	Series.Folder:
	AKB	SI. C. 32

GALERIE LOUIS LEIRIS
29^{me}, Rue d'Assolvi
PARIS-VIII^e

808

40 1/2 x 57

Oicans
Têtes de chevaux

40 1/2 x 57

1933 (Deux au rayon)

FOR STUDY PURPOSES ONLY. NOT FOR REPRODUCTION.

The Museum of Modern Art Archives, NY	Collection:	Series.Folder:
	A4B	SI.C.32



FOR STUDY PURPOSES ONLY. NOT FOR REPRODUCTION.

The Museum of Modern Art Archives, NY	Collection:	Series.Folder:
	AKB	XI.C.32

Return to
BUCHHOLZ GALLERY #1831
Curt Valentin
32 EAST 57th ST., NEW YORK CITY

Title BATHERS
Medium and Date INK 1934
Artist PICASSO
Size 9 1/4" X 13 1/4"

ADOLPH STUDLY
Photographer
114 east 28th St New York
LEx - 2 8061

C96

PLEASE RETURN PHOTOGRAPH

Handwritten notes:
ef
W
Phot

FOR STUDY PURPOSES ONLY. NOT FOR REPRODUCTION.

The Museum of Modern Art Archives, NY	Collection:	Series.Folder:
	AKB	SI. C. 32



FOR STUDY PURPOSES ONLY. NOT FOR REPRODUCTION.

The Museum of Modern Art Archives, NY	Collection:	Series.Folder:
	AHB	VI.C.32

PAUL ROSENBERG & CO.

16 EAST 57th STREET, NEW YORK CITY

PLaza 3-5653

PICASSO

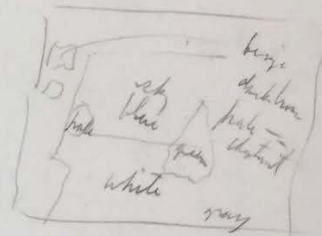
"Fleurs et Fruits devant la Fenêtre"

#5281 - 32-1/4" x 40"

7 April 1934 (Boris de Loup)

Included in the exhibition of
PAINTINGS by PICASSO
February 10th - March 1st, 1947
at Paul Rosenberg & Co.
16 East 57th Street, New York 22, N.Y.

Zwos VIII, #195 pl. 86



10 44

FOR STUDY PURPOSES ONLY. NOT FOR REPRODUCTION.

The Museum of Modern Art Archives, NY	Collection:	Series.Folder:
	AHB	SI. C. 32



P. Picasso
M. 32

FOR STUDY PURPOSES ONLY. NOT FOR REPRODUCTION.

The Museum of Modern Art Archives, NY	Collection:	Series.Folder:
	A#B	SI. C. 32

4071
130x195

1937

PRINTED IN FRANCE

FOR STUDY PURPOSES ONLY. NOT FOR REPRODUCTION.

The Museum of Modern Art Archives, NY	Collection:	Series.Folder:
	A4B	XI . C . 32



FOR STUDY PURPOSES ONLY. NOT FOR REPRODUCTION.

The Museum of Modern Art Archives, NY	Collection:	Series.Folder:
	AHB	SI.C.32

PAUL ROSENBERG & CO.

20 EAST 79th STREET, NEW YORK 21, N. Y.

RHinelander 4-2340

PICASSO

3848 P "Girl from Nice" 1937

32 X 25 3/4

Nice

Picasso file

FOR STUDY PURPOSES ONLY. NOT FOR REPRODUCTION.

The Museum of Modern Art Archives, NY	Collection:	Series.Folder:
	A4B	XI. C. 32



FOR STUDY PURPOSES ONLY. NOT FOR REPRODUCTION.

The Museum of Modern Art Archives, NY	Collection:	Series.Folder:
	AHB	SI. C. 32

P888
#3626

Artist Pablo Picasso

Subject Portrait de Oora Maar 2200

Medium Charcoal (1938)

Size 30 x 22 1/4 "

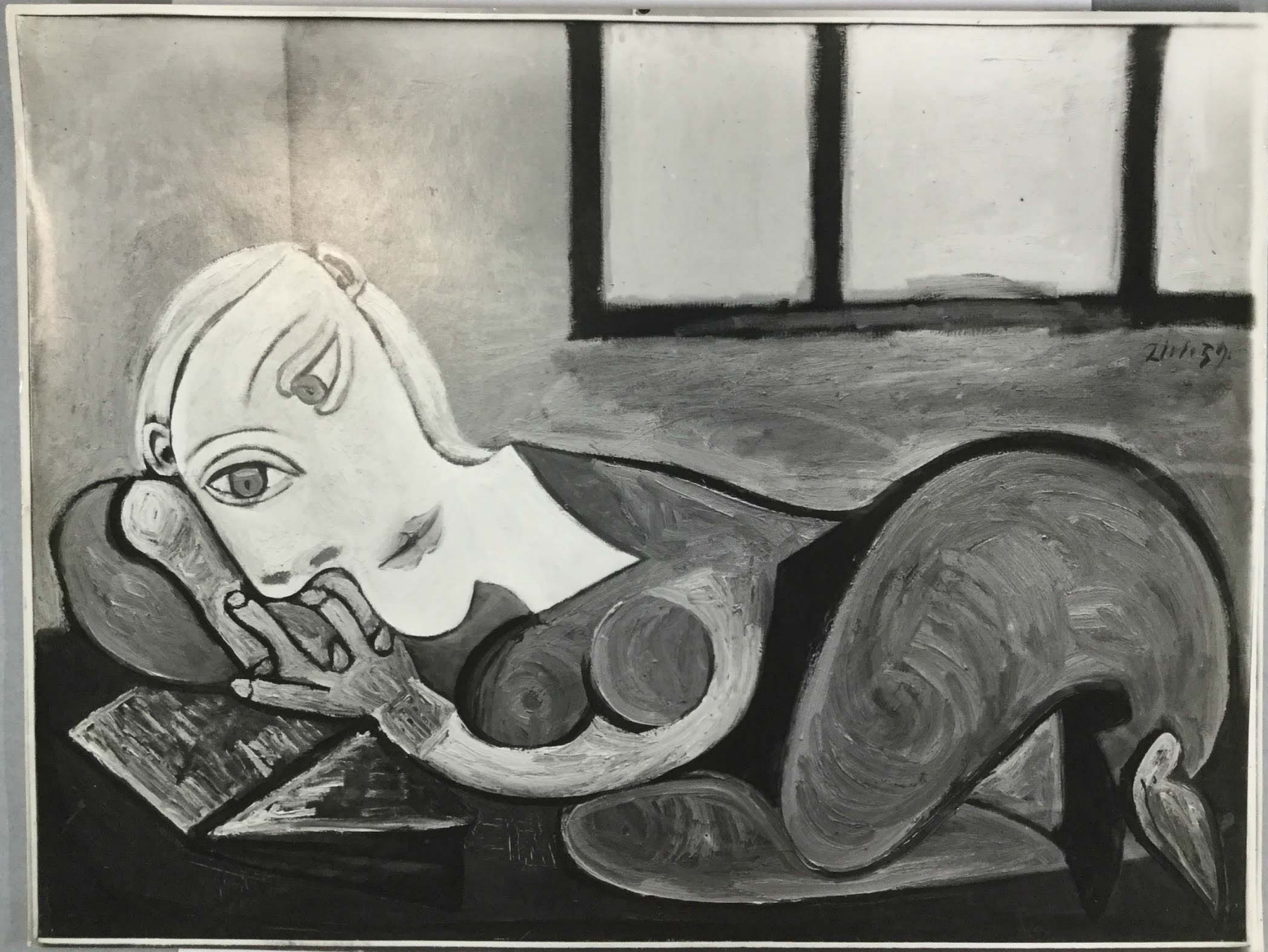
PERLS GALLERIES

~~3 - EAST 58TH STREET~~
~~1016 MADISON AVENUE~~
~~NEW YORK 21, N. Y.~~
~~NEW YORK, N. Y.~~

888

FOR STUDY PURPOSES ONLY. NOT FOR REPRODUCTION.

The Museum of Modern Art Archives, NY	Collection:	Series.Folder:
	AHB	XI. C. 32



FOR STUDY PURPOSES ONLY. NOT FOR REPRODUCTION.

The Museum of Modern Art Archives, NY	Collection:	Series.Folder:
	AHB	SI. C. 32

1939

PHOTO Marc VAUX
114^{bis}, Rue de Vaugirard
PARIS VI^e Tél. LITRE 90-91

FOR STUDY PURPOSES ONLY. NOT FOR REPRODUCTION.

The Museum of Modern Art Archives, NY	Collection:	Series.Folder:
	AHB	XI. C. 32



FOR STUDY PURPOSES ONLY. NOT FOR REPRODUCTION.

The Museum of Modern Art Archives, NY	Collection:	Series.Folder:
	AfB	SI.C.32

PHOTO MADE BY
111 W. 57th Street
New York 19, N.Y.

1939

FOR STUDY PURPOSES ONLY. NOT FOR REPRODUCTION.

The Museum of Modern Art Archives, NY	Collection:	Series.Folder:
	AHB	XI . C . 32



FOR STUDY PURPOSES ONLY. NOT FOR REPRODUCTION.

The Museum of Modern Art Archives, NY	Collection:	Series.Folder:
	AHB	SI.C.32



FOR STUDY PURPOSES ONLY. NOT FOR REPRODUCTION.

The Museum of Modern Art Archives, NY	Collection:	Series.Folder:
	AHB	SI. C. 32

Artist Pablo Picasso P 1255
4999
Subject Tête de Pêcheur
Medium Pen and ink and wash (1939)
Size 25 x 18 2200

PERLS GALLERIES

~~32 EAST 58TH STREET~~
1016 MADISON AVENUE
NEW YORK 21, N. Y.
NEW YORK, N. Y.

~~\$1800~~

1255

FOR STUDY PURPOSES ONLY. NOT FOR REPRODUCTION.

The Museum of Modern Art Archives, NY	Collection:	Series Folder:
	AHB	SI. C. 32



FOR STUDY PURPOSES ONLY. NOT FOR REPRODUCTION.

The Museum of Modern Art Archives, NY	Collection:	Series.Folder:
	AKB	SI . C . 32

1939

FOR STUDY PURPOSES ONLY. NOT FOR REPRODUCTION.

The Museum of Modern Art Archives, NY	Collection:	Series.Folder:
	A4B	XI. C. 32



FOR STUDY PURPOSES ONLY. NOT FOR REPRODUCTION.

The Museum of Modern Art Archives, NY	Collection:	Series.Folder:
	AHB	XI. C. 32

PAUL ROSENBERG & CO.

20 EAST 79th STREET, NEW YORK 21, N. Y.

RHinelander 4-2340

PICASSO

4225P "Enfant Assis" 1939

28 3/4 x 23 1/2

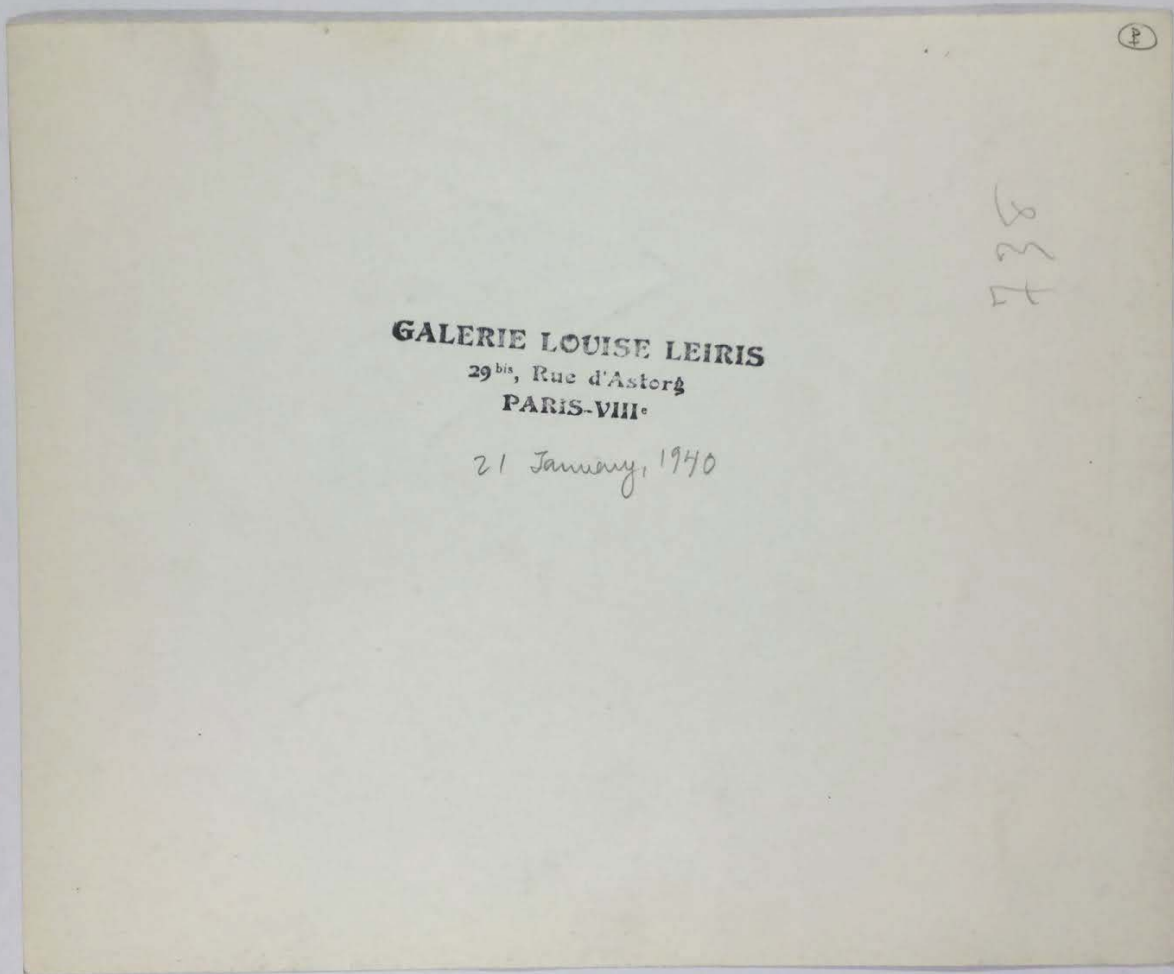
FOR STUDY PURPOSES ONLY. NOT FOR REPRODUCTION.

The Museum of Modern Art Archives, NY	Collection:	Series.Folder:
	A4B	XI. C. 32



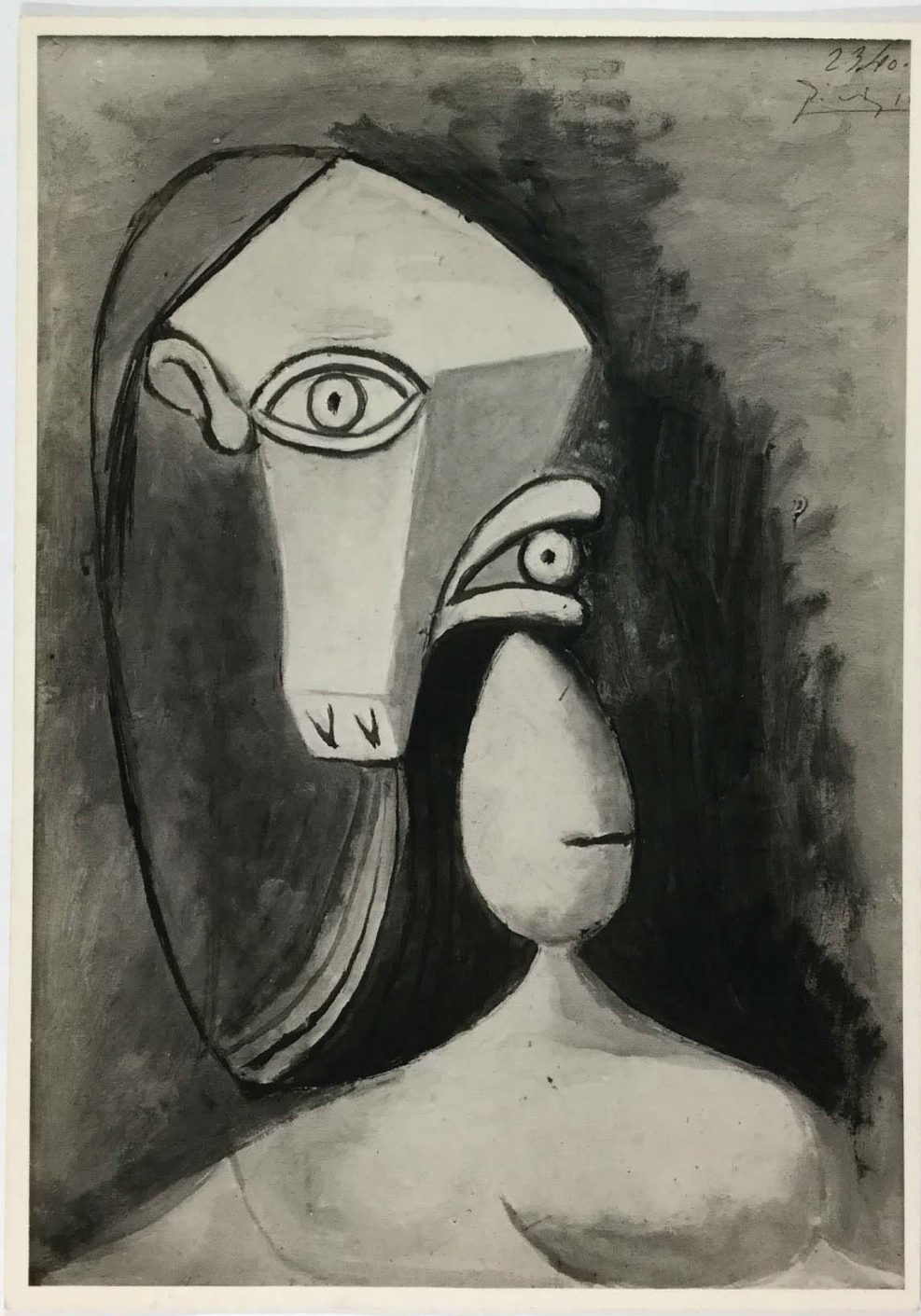
FOR STUDY PURPOSES ONLY. NOT FOR REPRODUCTION.

The Museum of Modern Art Archives, NY	Collection:	Series.Folder:
	AHB	XI. C. 32



FOR STUDY PURPOSES ONLY. NOT FOR REPRODUCTION.

The Museum of Modern Art Archives, NY	Collection:	Series.Folder:
	A4B	XI.C.32



FOR STUDY PURPOSES ONLY. NOT FOR REPRODUCTION.

The Museum of Modern Art Archives, NY	Collection:	Series.Folder:
	AHB	XI. C. 32

March 2, 1940

If reproduced, credit;
Courtesy, Museum of
Modern Art, New York

If reproduced, credit;
Courtesy, Museum of
Modern Art, New York

If reproduced, credit;
Courtesy, Museum of
Modern Art, New York

PHOTO Marc VAUX
114^{bis}, Rue de Vaugirard
PARIS VI - Tél. LITre 90-91

FOR STUDY PURPOSES ONLY. NOT FOR REPRODUCTION.

The Museum of Modern Art Archives, NY	Collection:	Series.Folder:
	AHB	XI.C.32



FOR STUDY PURPOSES ONLY. NOT FOR REPRODUCTION.

The Museum of Modern Art Archives, NY	Collection:	Series.Folder:
	AHB	XI. C. 32

PICASSO

Figure, November 3, 1941

130 cm. x 97 cm.

51 1/4 x 38 1/4 "

11,000

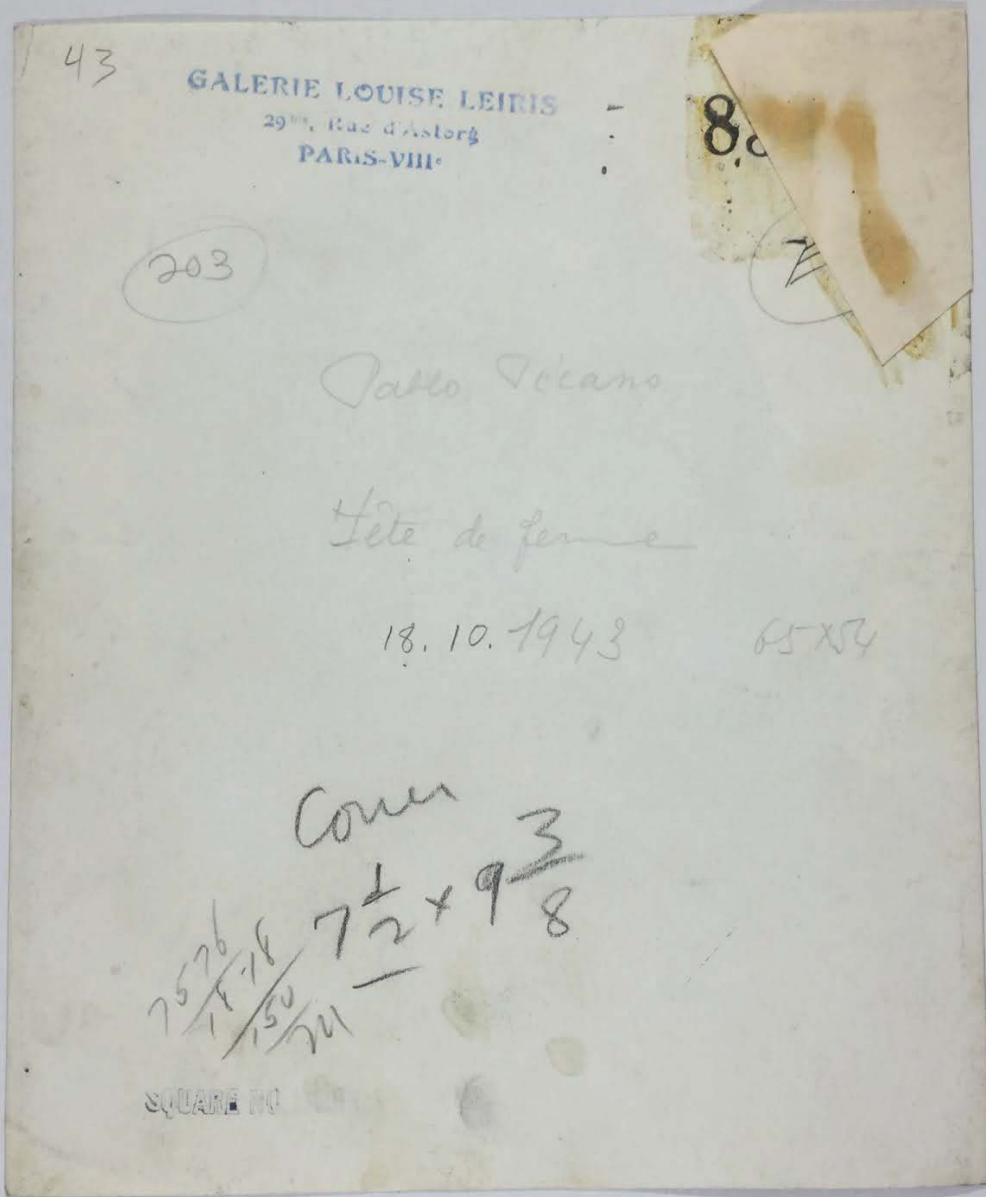
FOR STUDY PURPOSES ONLY. NOT FOR REPRODUCTION.

The Museum of Modern Art Archives, NY	Collection:	Series.Folder:
	A4B	VI. C. 32



FOR STUDY PURPOSES ONLY. NOT FOR REPRODUCTION.

The Museum of Modern Art Archives, NY	Collection:	Series.Folder:
	AHB	SI.C.32



FOR STUDY PURPOSES ONLY. NOT FOR REPRODUCTION.

The Museum of Modern Art Archives, NY	Collection:	Series.Folder:
	AHB	XI.C.32



FOR STUDY PURPOSES ONLY. NOT FOR REPRODUCTION.

The Museum of Modern Art Archives, NY	Collection:	Series.Folder:
	AHB	XI.C.32

Picasso file

PICASSO

1943

"DORA MAAR"

panel: $25\frac{5}{8} \times 21\frac{1}{4}$ in.

signed

COPYRIGHT.

SOLD 1956 by MARLBOROUGH FINE ART LTD.

17-18, OLD BOND ST., LONDON, W.1.

REG: 6195/4751

NOT TO BE REPRODUCED WITHOUT PERMISSION.

FOR STUDY PURPOSES ONLY. NOT FOR REPRODUCTION.

The Museum of Modern Art Archives, NY	Collection:	Series.Folder:
	AHB	SI. C. 32

⑨ Photos by James Thrall
Soby - 1937: Spanish
Pavilion at Paris Expo.

Alfred we tried to
throw these snapshots
away several times but
maybe they show things like
Sandy Calder's nursery
fountain in a different
light. Maybe still there
in the old Howard & Pierson
files? Or are we out of
room. Best, Jim

FOR STUDY PURPOSES ONLY. NOT FOR REPRODUCTION.

The Museum of Modern Art Archives, NY	Collection:	Series.Folder:
	AHB	XI. C. 32

Alfred: I've tried to
throw these snapshots
away several times but
maybe they show things like
Sandy Calder's mercury
fountain in a different
light. Maybe still there
in the Old Howard's Pease
fiber room? I'm all out of
room. Best, Jim

FOR STUDY PURPOSES ONLY. NOT FOR REPRODUCTION.

The Museum of Modern Art Archives, NY	Collection:	Series.Folder:
	AHB	SI.C.32



FOR STUDY PURPOSES ONLY. NOT FOR REPRODUCTION.

The Museum of Modern Art Archives, NY	Collection:	Series.Folder:
	AKB	SI.C.32

Calder Fountain

Spanish Bldg

Paris 1937

FOR STUDY PURPOSES ONLY. NOT FOR REPRODUCTION.

The Museum of Modern Art Archives, NY	Collection:	Series.Folder:
	AKB	SI.C.32



FOR STUDY PURPOSES ONLY. NOT FOR REPRODUCTION.

The Museum of Modern Art Archives, NY	Collection:	Series.Folder:
	AKB	SI.C.32

Spanish Bldg.
Paris 1937

FOR STUDY PURPOSES ONLY. NOT FOR REPRODUCTION.

The Museum of Modern Art Archives, NY	Collection:	Series.Folder:
	AKB	XI. C. 32



FOR STUDY PURPOSES ONLY. NOT FOR REPRODUCTION.

The Museum of Modern Art Archives, NY	Collection:	Series.Folder:
	AKB	XI. C. 32

Spanish Bldg.

Paris Expos. - 1937

FOR STUDY PURPOSES ONLY. NOT FOR REPRODUCTION.

The Museum of Modern Art Archives, NY	Collection:	Series.Folder:
	AKB	XI. C. 32



FOR STUDY PURPOSES ONLY. NOT FOR REPRODUCTION.

The Museum of Modern Art Archives, NY	Collection:	Series.Folder:
	AKB	XI.C.32

photo by James Thrall Soby

Spanish Bldg.

Paris Supos. - 1937

FOR STUDY PURPOSES ONLY. NOT FOR REPRODUCTION.

The Museum of Modern Art Archives, NY	Collection:	Series.Folder:
	AKB	SI.C.32



FOR STUDY PURPOSES ONLY. NOT FOR REPRODUCTION.

The Museum of Modern Art Archives, NY	Collection:	Series.Folder:
	A#B	SI.C.32

Spanish Parline

Paris Expos. - 1937

Photo by J.T. Soby

FOR STUDY PURPOSES ONLY. NOT FOR REPRODUCTION.

The Museum of Modern Art Archives, NY	Collection:	Series.Folder:
	AKB	XI. C. 32



FOR STUDY PURPOSES ONLY. NOT FOR REPRODUCTION.

The Museum of Modern Art Archives, NY	Collection:	Series.Folder:
	AKB	XI. C. 32

Spanish Bldg.

Paris Expos. - 1937

FOR STUDY PURPOSES ONLY. NOT FOR REPRODUCTION.

The Museum of Modern Art Archives, NY	Collection:	Series.Folder:
	AHB	SI. C. 32



FOR STUDY PURPOSES ONLY. NOT FOR REPRODUCTION.

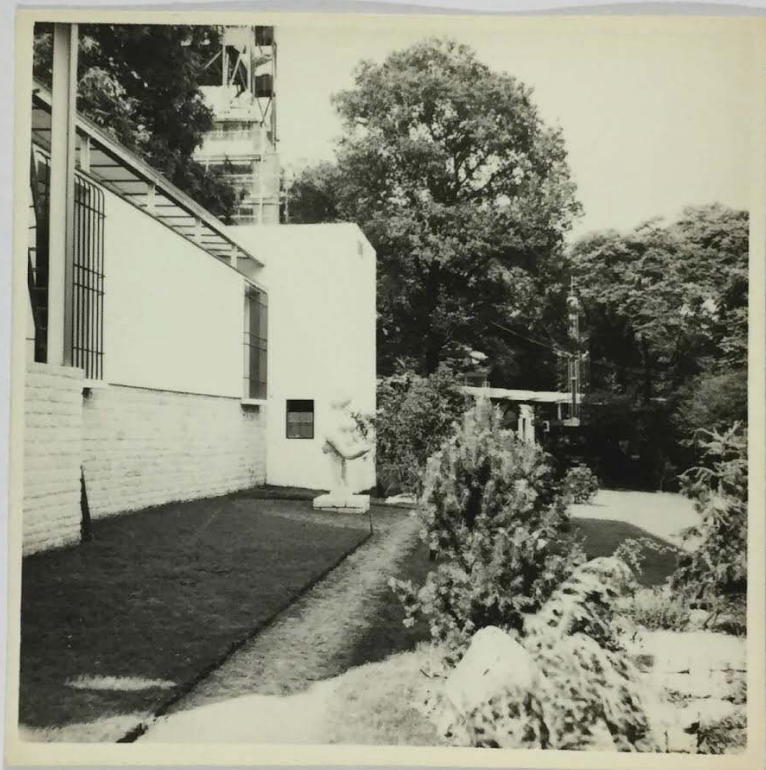
The Museum of Modern Art Archives, NY	Collection:	Series.Folder:
	AHB	SI.C.32

Spanish Bldg.
Paris Expos. - 1937

photo by J.T. Soby

FOR STUDY PURPOSES ONLY. NOT FOR REPRODUCTION.

The Museum of Modern Art Archives, NY	Collection:	Series.Folder:
	AHB	SI.C.32



FOR STUDY PURPOSES ONLY. NOT FOR REPRODUCTION.

The Museum of Modern Art Archives, NY	Collection:	Series.Folder:
	AHB	VI.C.32

Spanish building

Paris Expos. 1937

FOR STUDY PURPOSES ONLY. NOT FOR REPRODUCTION.

The Museum of Modern Art Archives, NY	Collection:	Series.Folder:
	AHB	SI.C.32



FOR STUDY PURPOSES ONLY. NOT FOR REPRODUCTION.

The Museum of Modern Art Archives, NY	Collection:	Series.Folder:
	AHB	XI.C.32

Spanish Bldg.

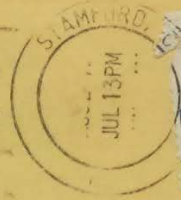
Paris Expos. - 1937

Photo by J.T. SoBy

FOR STUDY PURPOSES ONLY. NOT FOR REPRODUCTION.

The Museum of Modern Art Archives, NY	Collection:	Series.Folder:
	AHB	SI.C.32

J. J. Solby
Brusky Ridge Rd
New Canaan Conn 06840



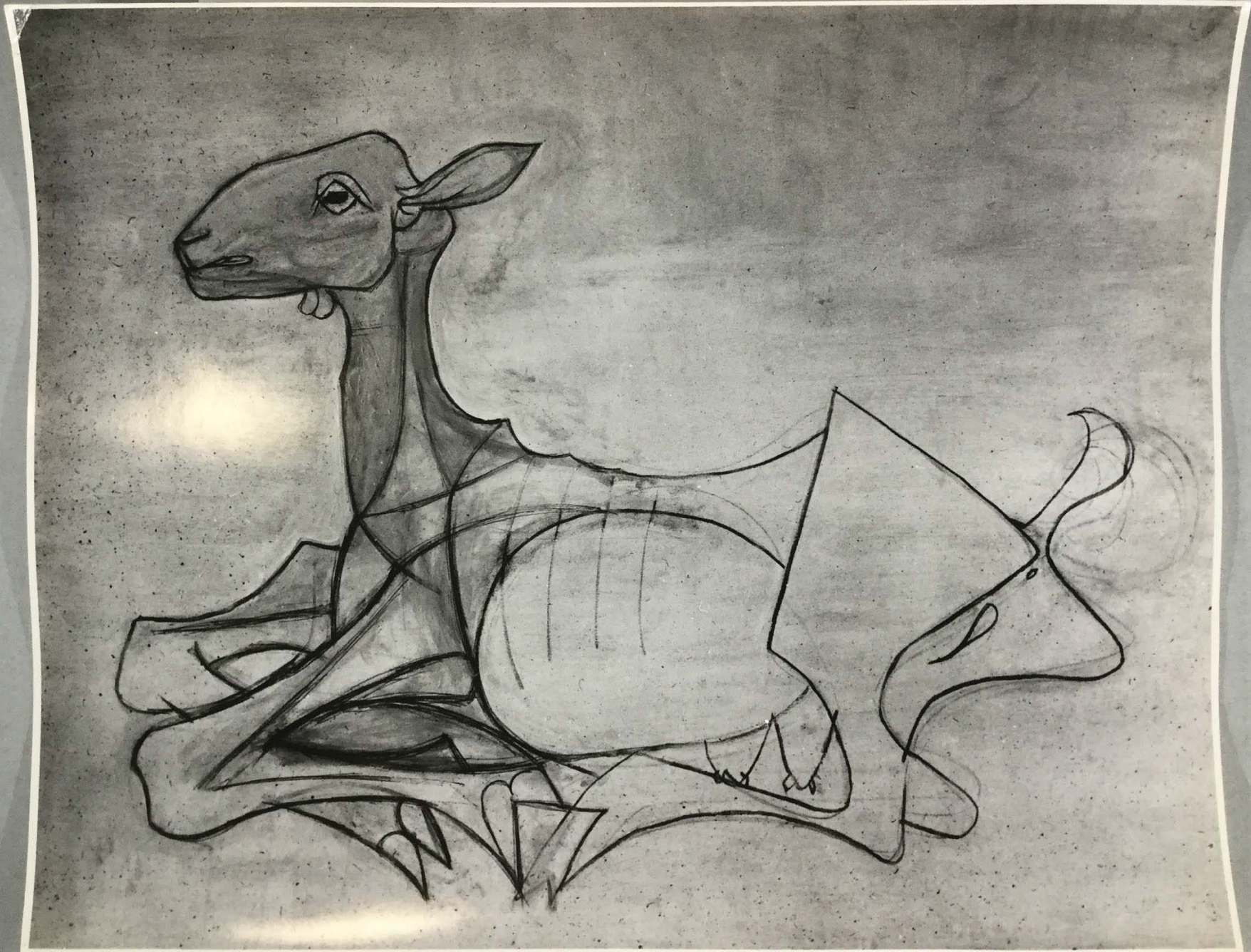
FIRST CLASS

~~file~~ Picasso file

Mr. A. H. Barr, Jr.
Museum of Modern Art
11 West 53rd St
New York, NY 10019

FOR STUDY PURPOSES ONLY. NOT FOR REPRODUCTION.

The Museum of Modern Art Archives, NY	Collection:	Series.Folder:
	AHB	XI. C. 32



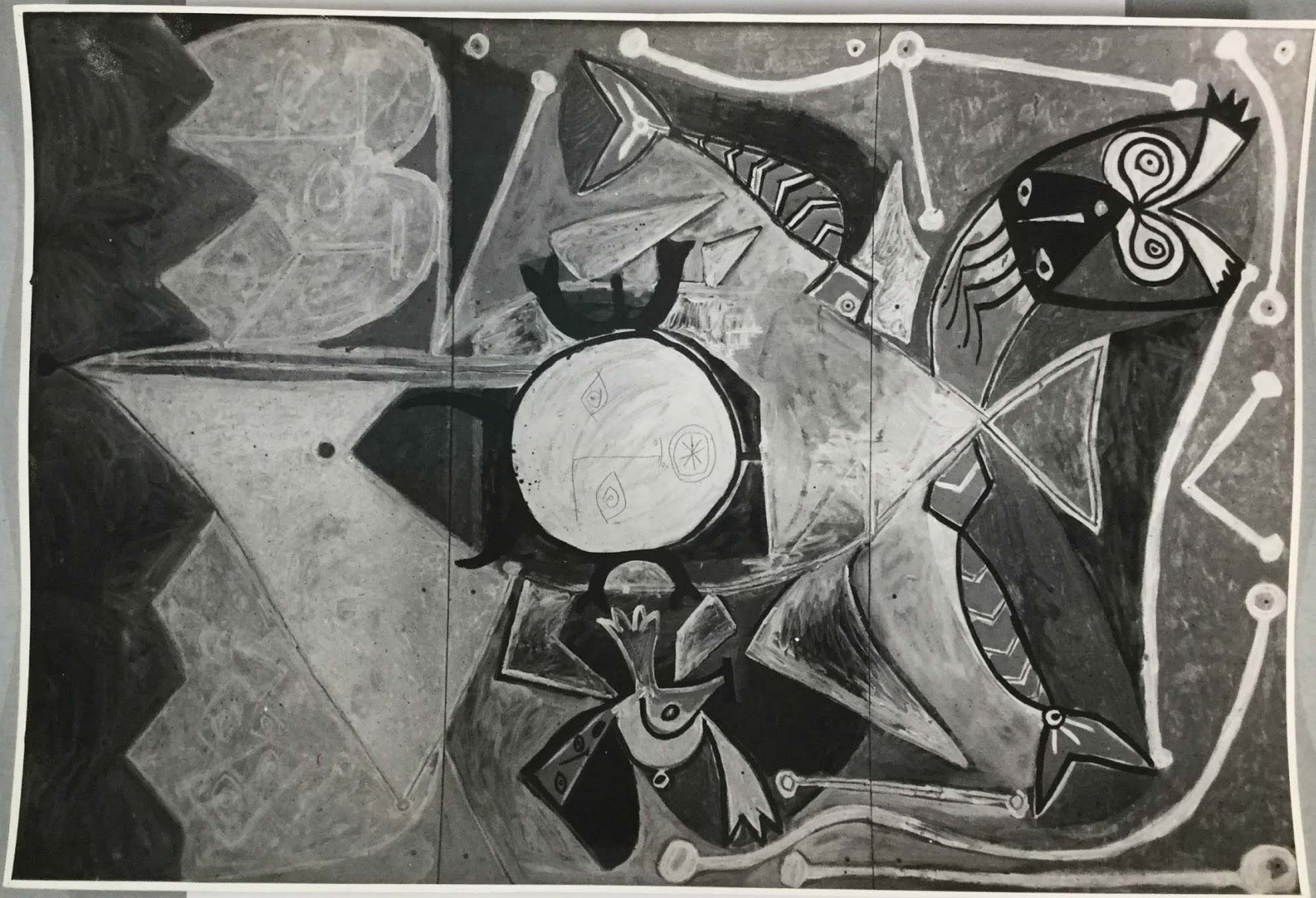
FOR STUDY PURPOSES ONLY. NOT FOR REPRODUCTION.

The Museum of Modern Art Archives, NY	Collection:	Series.Folder:
	AKB	SI. C. 32



FOR STUDY PURPOSES ONLY. NOT FOR REPRODUCTION.

The Museum of Modern Art Archives, NY	Collection:	Series.Folder:
	A4B	XI. C. 32



FOR STUDY PURPOSES ONLY. NOT FOR REPRODUCTION.

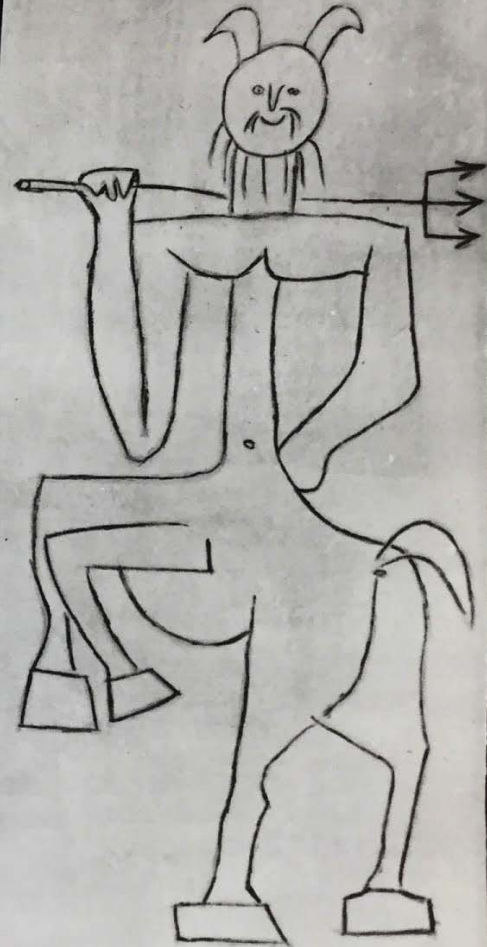
The Museum of Modern Art Archives, NY	Collection:	Series.Folder:
	AKB	SI. C. 32

ca. 1948 ?



FOR STUDY PURPOSES ONLY. NOT FOR REPRODUCTION.

The Museum of Modern Art Archives, NY	Collection:	Series.Folder:
	AKB	XI.C.32



FOR STUDY PURPOSES ONLY. NOT FOR REPRODUCTION.

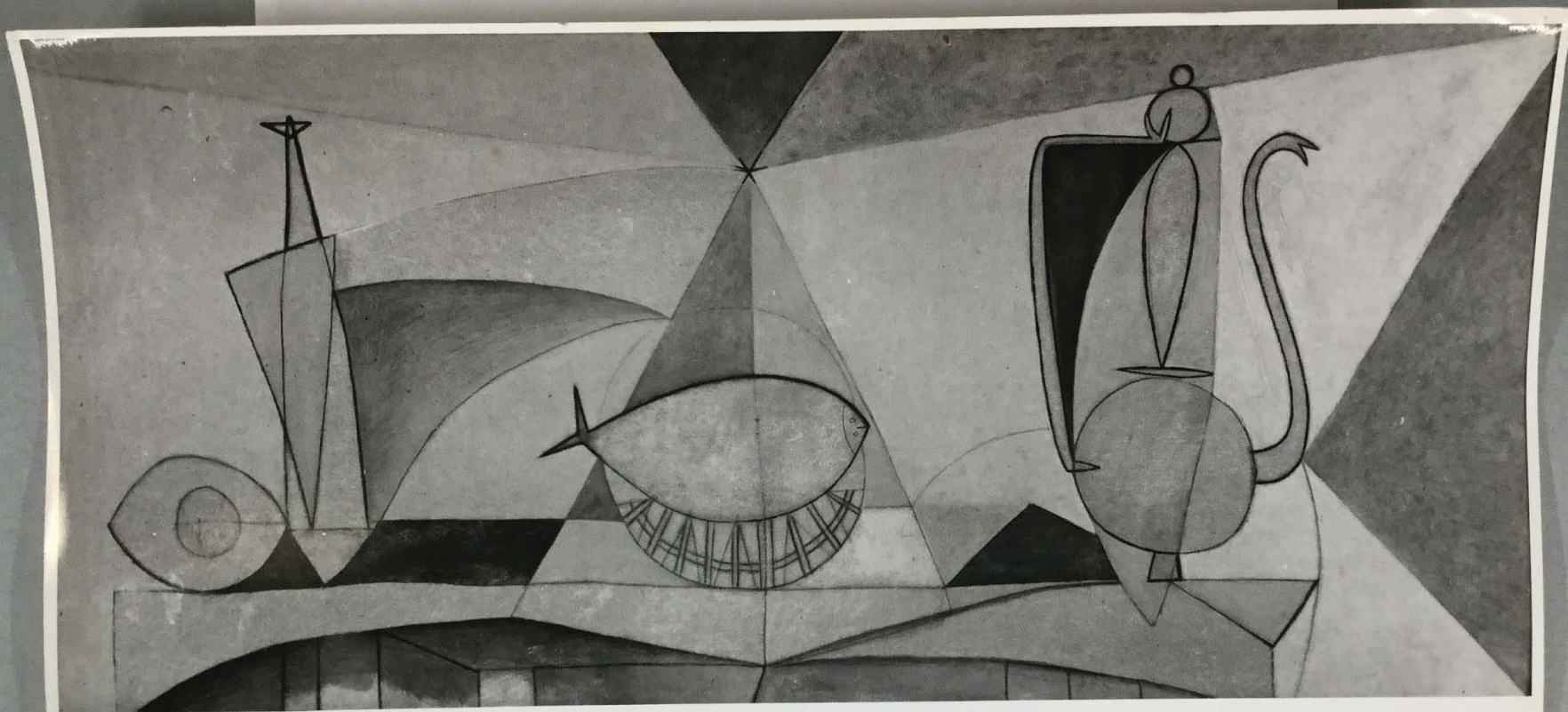
The Museum of Modern Art Archives, NY	Collection:	Series.Folder:
	AHB	SI. C. 32

p. 23.-25



FOR STUDY PURPOSES ONLY. NOT FOR REPRODUCTION.

The Museum of Modern Art Archives, NY	Collection:	Series.Folder:
	AHB	SI.C.32



FOR STUDY PURPOSES ONLY. NOT FOR REPRODUCTION.

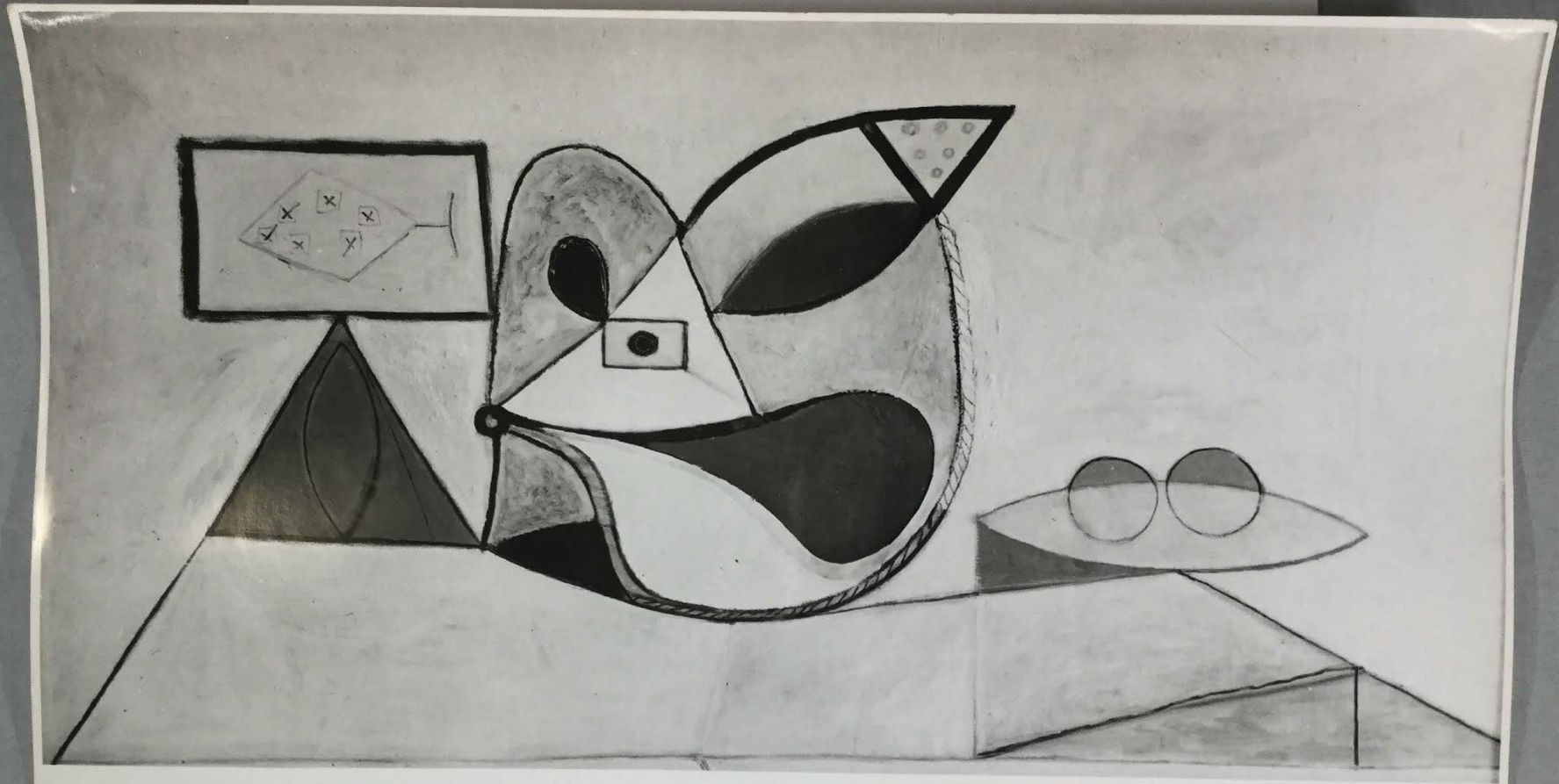
The Museum of Modern Art Archives, NY	Collection:	Series.Folder:
	AKB	SI. C. 32

p-20 -



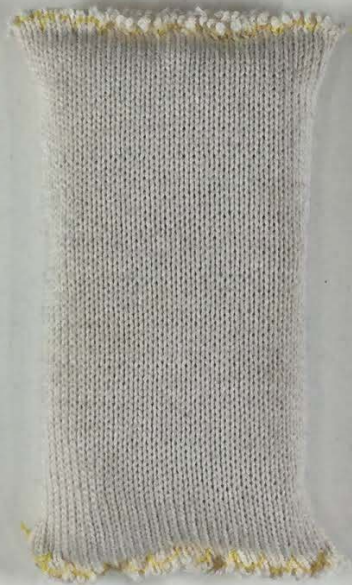
FOR STUDY PURPOSES ONLY. NOT FOR REPRODUCTION.

The Museum of Modern Art Archives, NY	Collection:	Series.Folder:
	A4B	SI. C. 32



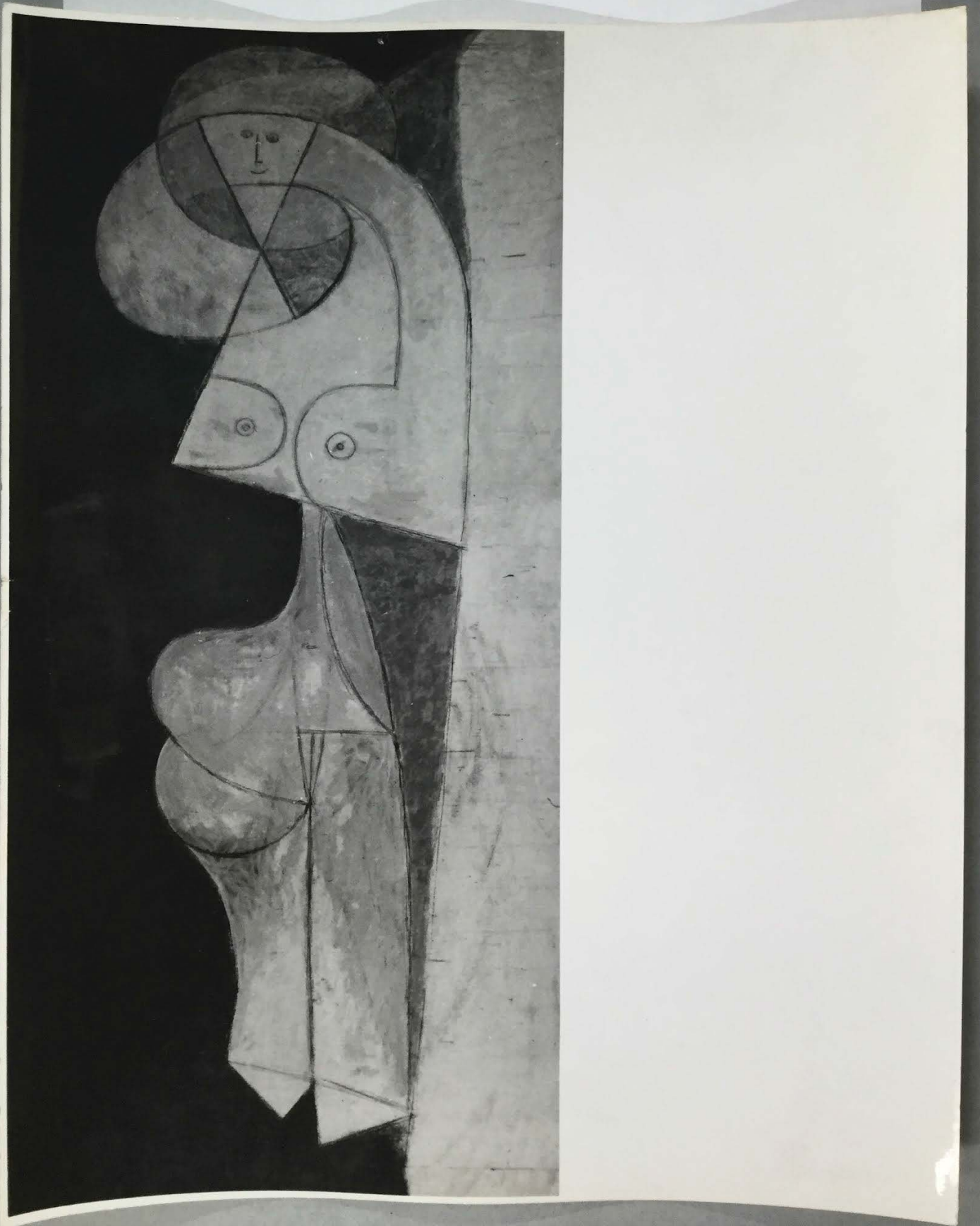
FOR STUDY PURPOSES ONLY. NOT FOR REPRODUCTION.

The Museum of Modern Art Archives, NY	Collection:	Series.Folder:
	AKB	SI. C. 32



FOR STUDY PURPOSES ONLY. NOT FOR REPRODUCTION.

The Museum of Modern Art Archives, NY	Collection:	Series.Folder:
	AHB	SI. C. 32



FOR STUDY PURPOSES ONLY. NOT FOR REPRODUCTION.

The Museum of Modern Art Archives, NY	Collection:	Series.Folder:
	AHB	SI. C. 32

