

CONDITIONS OF USE FOR THIS PDF

The images contained within this PDF may be used for private study, scholarship, and research only. They may not be published in print, posted on the internet, or exhibited. They may not be donated, sold, or otherwise transferred to another individual or repository without the written permission of The Museum of Modern Art Archives.

When publication is intended, publication-quality images must be obtained from SCALA Group, the Museum's agent for licensing and distribution of images to outside publishers and researchers.

If you wish to quote any of this material in a publication, an application for permission to publish must be submitted to the MoMA Archives. This stipulation also applies to dissertations and theses. All references to materials should cite the archival collection and folder, and acknowledge "The Museum of Modern Art Archives, New York."

Whether publishing an image or quoting text, you are responsible for obtaining any consents or permissions which may be necessary in connection with any use of the archival materials, including, without limitation, any necessary authorizations from the copyright holder thereof or from any individual depicted therein.

In requesting and accepting this reproduction, you are agreeing to indemnify and hold harmless The Museum of Modern Art, its agents and employees against all claims, demands, costs and expenses incurred by copyright infringement or any other legal or regulatory cause of action arising from the use of this material.

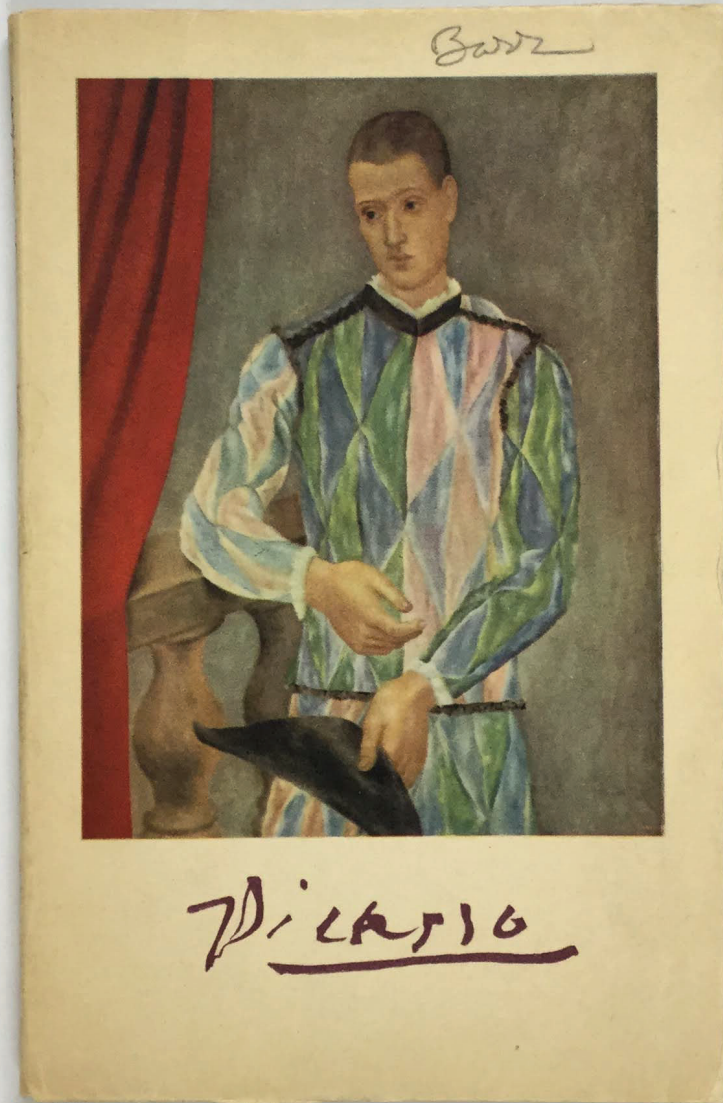
NOTICE: WARNING CONCERNING COPYRIGHT RESTRICTIONS

The copyright law of the United States (Title 17, United States Code) governs the making of photocopies or other reproductions of copyrighted material. Under certain conditions specified in the law, libraries and archives are authorized to furnish a photocopy or other reproduction. One of these specified conditions is that the photocopy or reproduction is not to be "used for any purpose other than private study, scholarship, or research." If a user makes a request for, or later uses, a photocopy or reproduction for purposes in excess of "fair use," that user may be liable for copyright infringement.

**ONLY THE ANNOTATED PAGES OF THE FOLLOWING PUBLICATION
HAVE BEEN SCANNED. PLEASE REFER TO THE ORIGINAL FOR THE
REMAINING, UNANNOTATED PAGES.**

FOR STUDY PURPOSES ONLY. NOT FOR REPRODUCTION.

The Museum of Modern Art Archives, NY	Collection:	Series.Folder:
	AHB	XI.B.46



FOR STUDY PURPOSES ONLY. NOT FOR REPRODUCTION.

The Museum of Modern Art Archives, NY	Collection:	Series.Folder:
	AHB	XI.B.46



CE
HUITIÈME VOLUME
DE LA
BIBLIOTHÈQUE ALDINE
DES ARTS

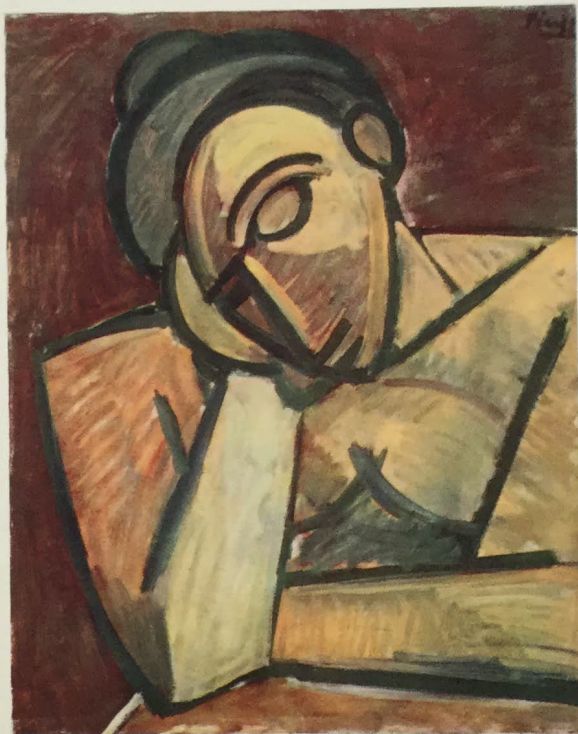
PUBLIÉE SOUS LA DIRECTION DE
RENÉ BEN SUSSAN
A ÉTÉ ACHÉVÉ D'IMPRIMER
EN JUILLET 1949
LES PLANCHES ONT ÉTÉ TIRÉES
SUR LES PRESSES OFFSET DE
L. DELAPORTE
LA TYPOGRAPHIE EST DE
L'IMPRIMERIE UNION
A PARIS
ET LES CLICHÉS DES
CLICHÉS UNION

PRINTED IN FRANCE

Picasso

FOR STUDY PURPOSES ONLY. NOT FOR REPRODUCTION.

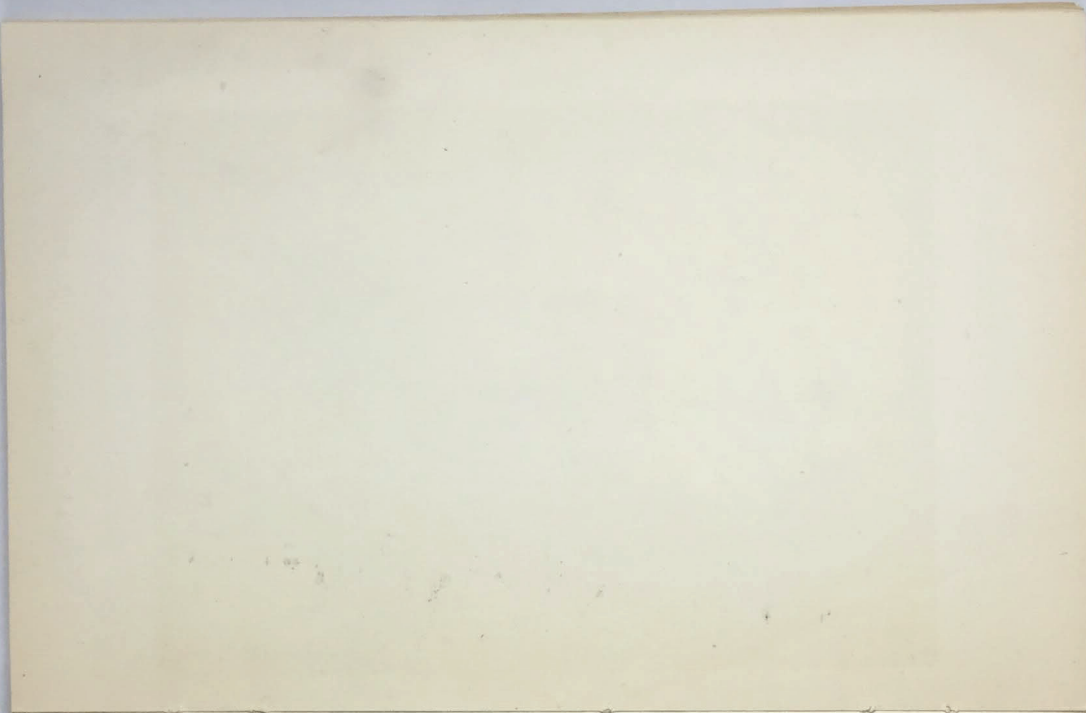
The Museum of Modern Art Archives, NY	Collection:	Series.Folder:
	AHB	XI.B.46



too pale overall

FOR STUDY PURPOSES ONLY. NOT FOR REPRODUCTION.

The Museum of Modern Art Archives, NY	Collection:	Series.Folder:
	AHB	XI.B.46



20

