

# Hey kids!

**This guide is for you. Look inside for fun stuff to see and do at the Museum.**

**Pencils only, please.**



# MoMA

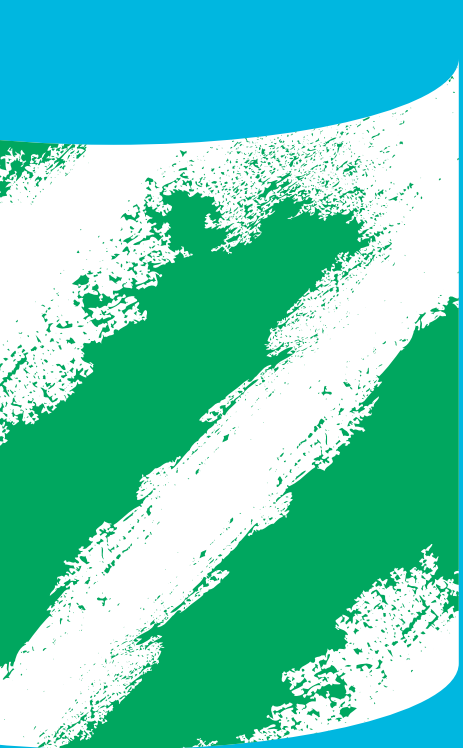
# **Help protect the art!**

**Please do not touch artworks  
(even in the Sculpture Garden)  
or get too close—three giant  
steps away is a safe distance.**

# **Welcome to The Museum of Modern Art**

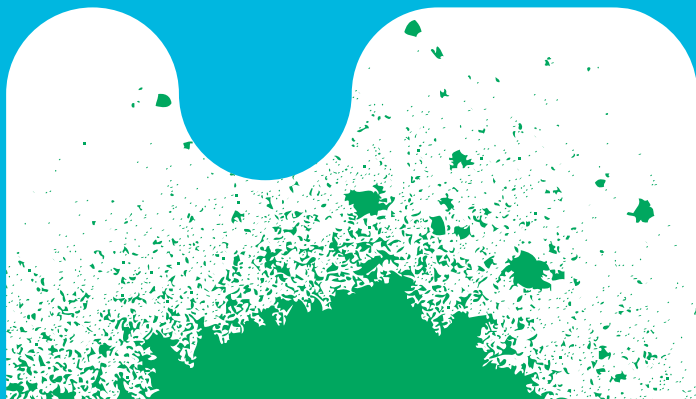
**Modern and contemporary artists have continually reimagined what art can be. At MoMA you can explore paintings, photographs, sculptures, films, design objects, performances, drawings, prints, and architecture. As you move through the galleries, think about what surprises you.**

**Use this guide to explore artworks on Floors 2, 4, and 5. Each activity has a suggested gallery or galleries. Look for gallery numbers in the doorframes between galleries.**



# 2

**On this floor:**  
**focus on photography**  
**go on a material hunt**  
**explore installations**  
**imagine interiors**



## Floor 2, Gallery 201

**Choose** a photograph.

**Write** a journal entry from the character's point of view. **Describe** your day and how you were feeling.

---

---

---

---

---

---

---

---

### Art fact

Cindy Sherman creates photographs of herself dressed as different characters. In every artwork she is both in front of and behind the camera, acting as the model and the photographer.

---

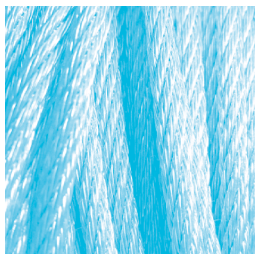
---

---

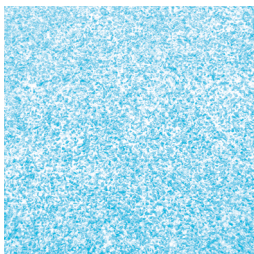
## Floor 2, Gallery 203–207

**Search** for these materials in works of art.  
**How did the artist use each material?**

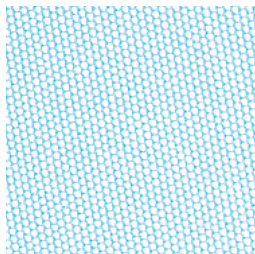
**metal wire**



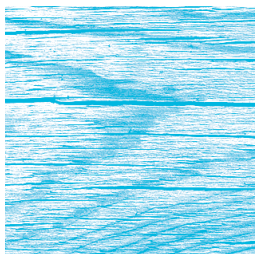
**sand**



**nylon mesh**



**wood**



**rope**



**List** other surprising materials you find  
on this floor.

---

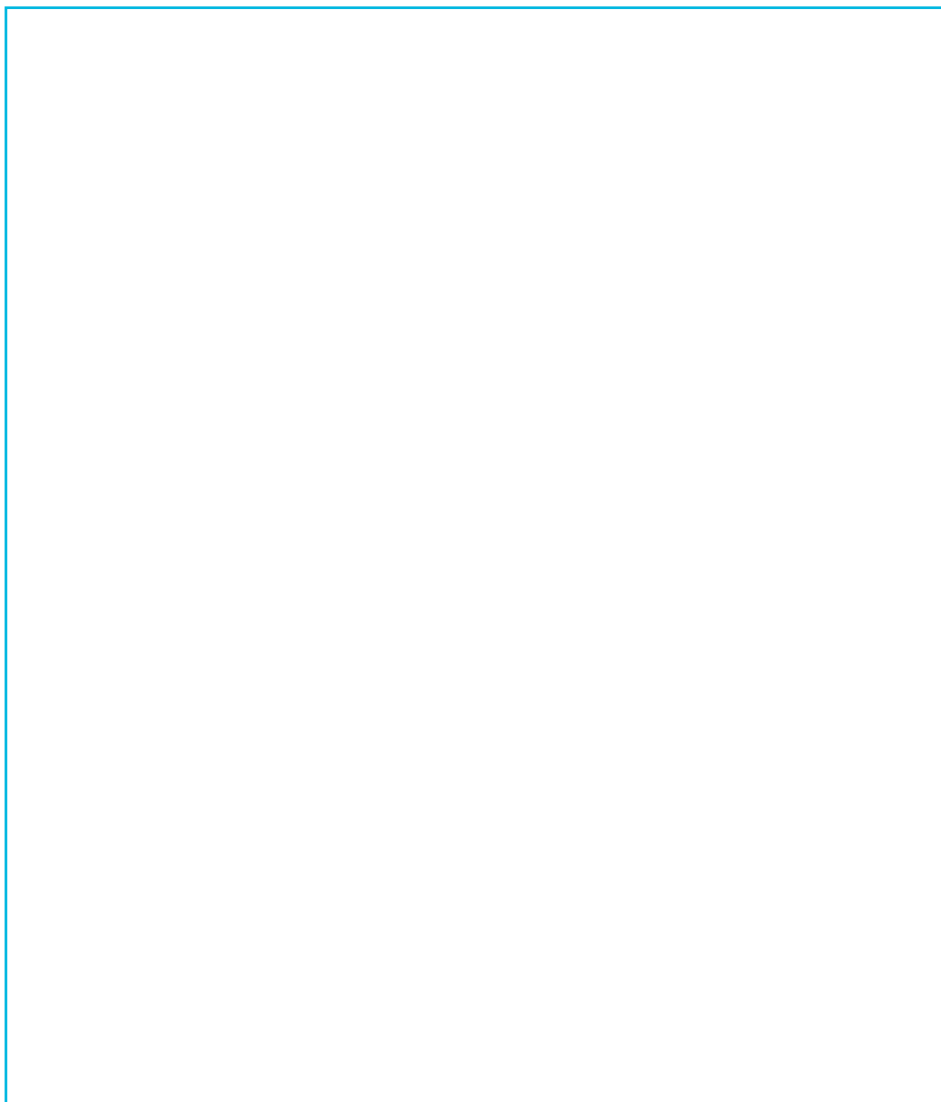
---

---

## Floor 2, Gallery 210

**Walk around** the installation *Equal* by Richard Serra.

**Sketch** it from two different places.





## Floor 2, Gallery 210

**What details do you notice that you didn't see before? How are your drawings different?**

### Art fact

Richard Serra makes us think about something that is normally invisible—space. His steel sculptures and installations are so large that we need to move in and around them in order to experience them.

## Floor 2, Gallery 216

**Choose** a model of a building.

**Imagine** what people might do in and around this building.

**Draw** or **write** your ideas below.

# 4

**On this floor:  
draw the details  
strike a pose  
make some marks  
play with words  
get into shape  
say what you see**



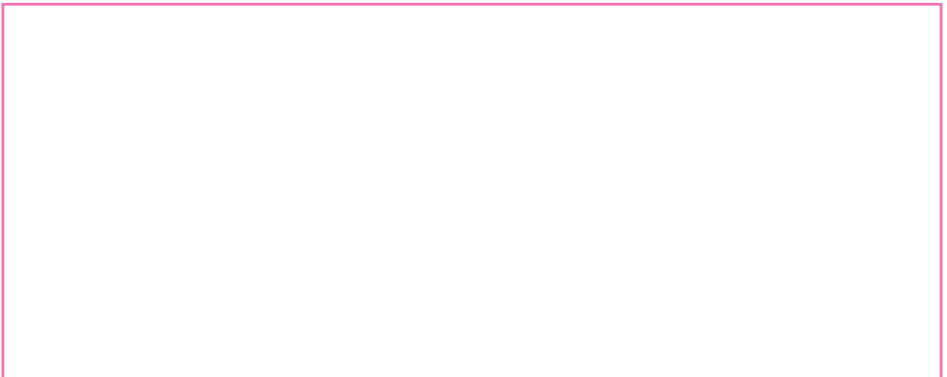
## Floor 4, Gallery 400

**Choose** a sculpture.

**Zoom in** and draw a detail of that sculpture.



Next, **move** around it and draw it from a different side or angle.



**What do you notice that you didn't see before?**

## Floor 4, Gallery 402

**Find** *Migration Series* by Jacob Lawrence.

**Search** the paintings for people who are:

**reading**

**working**

**traveling**

**writing**

**Pose** like each of the people.

**Discuss** what they might be thinking or feeling.

### Art fact

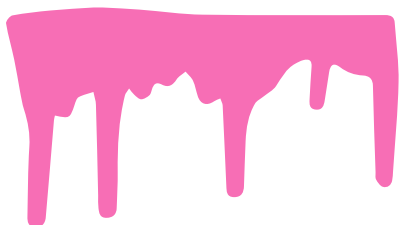
During and after World War I, nearly two million African Americans moved from the rural South to the urban North seeking jobs, respect, and safety from racist violence. In *Migration Series*, Jacob Lawrence told their story using shapes, colors, and words.

**What do you see that makes you say that? You can look at Lawrence's description for ideas, too.**

## Floor 4, Galleries 403–405

**Search** for the following types of marks in paintings in these galleries:

**drip**



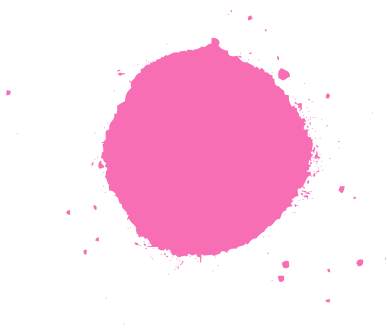
**smear**



**squiggle**



**dot**



**scratch**



## Floor 4, Galleries 403–405

**Draw** three more marks you find in these galleries.

## Floor 4, Gallery 406

**Find** *Poem* by Saloua Raouda Choucair.

**Write** words or phrases inspired by different parts of the sculpture:

---

---

---

---

---

---

---

---

### Art fact

Saloua Raouda Choucair was inspired by Arabic poetry to create sculptures with rhythm, structure, and individual parts that can be rearranged in different formations.

**Read** all of your words aloud. Try reading from top to bottom, bottom to top, or in a different order.



Turn the page

## Floor 4, Gallery 406

**Find** *The Swimming Pool* by Henri Matisse.

**Tear** two large shapes from this page.

**Arrange** your two shapes on the following page. Look at some of Matisse's shapes for inspiration.

## Floor 4, Gallery 406

**Experiment** with placing your shapes close together, far apart, overlapping, and in different directions.

## Floor 4, Galleries 413

**Match** each word below to a work of art.

**Discuss** why you think each word fits with the artwork you chose.

confusing

shiny

bright

funny

straight

repetitive

# 5

**On this floor:**  
**sketch sculptures**  
**picture places**  
**consider form and function**  
**write a poem**  
**tell a story**  
**express yourself**



## Floor 5, Gallery 500

**Draw** a sculpture by Constantin Brancusi. Sketch the outline, zoom in on a detail, or try to draw without looking at your paper.

### Art fact

In his sculptures, Brancusi simplified shapes, trying to capture the essence, or spirit, of the animals, people, and objects that inspired him. Discover what inspired each sculpture by reading its title on the wall label.

**What did you notice?**

## Floor 5, Gallery 501

**Choose** an artwork that shows a place you'd like to visit and share why. Make sure each person in your group has a turn!

## Floor 5, Gallery 513

**Find** chairs, tables, lamps, or other objects that you imagine you could use to:

☐ **read**

☐ **do homework**

☐ **eat**

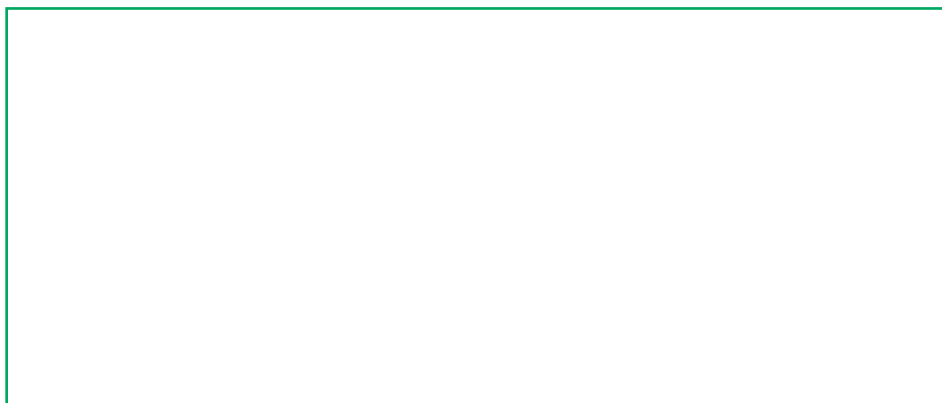
☐ **add your own idea:**

☐ **draw**

☐ **watch tv**

\_\_\_\_\_

**Sketch** your favorite object.



## Floor 5, Gallery 515

**Choose** one of the paintings by Claude Monet in this gallery.

**Write** down as many words as you can think of to describe it. Work together to combine your words into a poem about the painting.


### Art fact

Monet made many paintings of his garden, capturing it at different times of day, in all four seasons. Through his paintings, he hoped to share the beauty and peace of this place that was so special to him.



## Floor 5, Galleries 517–518

**Search** for a mysterious or puzzling artwork.

**Tell a story** about what you see. Take turns adding to the story.

**What's going on? What might happen next?**

## Floor 5, Gallery 520

**Choose** an artwork with a person or group of people.

**Notice** their expressions and poses.

**Write** what one person might be thinking or saying.



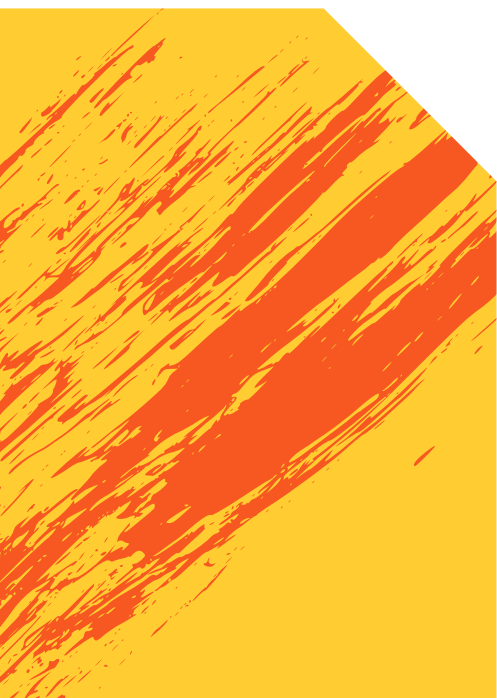


Volkswagen

**Volkswagen of America is proud to be MoMA's lead partner of education.**

**Family Programs are made possible by The Samuel and Ronnie Heyman Family Endowment Fund.**

**Generous funding is provided by The William Randolph Hearst Endowment Fund and Brett and Daniel Sundheim. Additional support is provided by the Annual Education Fund.**



**The Museum of Modern Art**  
**11 West 53 Street**  
**New York, NY 10019**  
**[moma.org](http://moma.org)**