

Abstract Generation: Now in Print

The Museum of Modern Art, New York March 15, 2013-June 24, 2013
2nd Floor, Prints Galleries



CORY ARCANGEL (American, born 1978)
Monoprint 1
2008
Screenprint on watermarked paper
composition (irreg.): 34 5/8 x 26" (88 x 66 cm); sheet (irreg.): 39 15/16 x 30 1/16" (101.5 x 76.3 cm)
The Museum of Modern Art, New York. Fund for the Twenty-First Century



CORY ARCANGEL (American, born 1978)
Monoprint 2
2008
Screenprint on watermarked paper
composition (irreg.): 36 7/16 x 26" (92.5 x 66 cm); sheet (irreg.): 39 7/8 x 30 1/8" (101.3 x 76.5 cm)
The Museum of Modern Art, New York. Fund for the Twenty-First Century



CORY ARCANGEL (American, born 1978)
Monoprint 6
2008
Screenprint on watermarked paper
composition (irreg.): 35 13/16 x 26 3/4" (91 x 68 cm); sheet (irreg.): 39 15/16 x 29 15/16" (101.5 x 76 cm)
The Museum of Modern Art, New York. Fund for the Twenty-First Century



JOHN ARMLEDER (Swiss, born 1948)

Untitled

1992

One from a portfolio of sixteen relief prints

composition: 3 3/16 x 7 7/16" (8.1 x 18.9 cm); sheet: 25 7/16 x 19 5/8" (64.6 x 49.8 cm)

The Museum of Modern Art, New York. Deborah Wye Endowment Fund



JOHN ARMLEDER (Swiss, born 1948)

Untitled

1992

One from a portfolio of sixteen relief prints

composition: 10 1/8 x 8 9/16" (25.7 x 21.7 cm); sheet: 25 7/16 x 19 5/8" (64.6 x 49.8 cm)

The Museum of Modern Art, New York. Deborah Wye Endowment Fund



JOHN ARMLEDER (Swiss, born 1948)

Untitled

1992

One from a portfolio of sixteen relief prints

composition: 10 13/16 x 7 13/16" (27.5 x 19.8 cm); sheet: 25 1/2 x 19 5/8" (64.7 x 49.8 cm)

The Museum of Modern Art, New York. Deborah Wye Endowment Fund



JOHN ARMLEDER (Swiss, born 1948)

Untitled

1992

One from a portfolio of sixteen relief prints

composition: 10 1/8 x 8 1/2" (25.7 x 21.6 cm); sheet: 25 1/2 x 19 5/8" (64.7 x 49.8 cm)

The Museum of Modern Art, New York. Deborah Wye Endowment Fund



JOHN ARMLEDER (Swiss, born 1948)

Untitled

1992

One from a portfolio of sixteen relief prints

composition: 10 1/4 x 8 9/16" (26.1 x 21.7 cm); sheet: 25 1/2 x 19 5/8" (64.7 x 49.8 cm)

The Museum of Modern Art, New York. Deborah Wye Endowment Fund



JOHN ARMLEDER (Swiss, born 1948)

Untitled

1992

One from a portfolio of sixteen relief prints

composition: 10 13/16 x 5 5/16" (27.5 x 13.5 cm); sheet: 25 1/2 x 19 5/8" (64.7 x 49.8 cm)

The Museum of Modern Art, New York. Deborah Wye Endowment Fund



JOHN ARMLEDER (Swiss, born 1948)

Untitled

1992

One from a portfolio of sixteen relief prints

composition: 10 1/4 x 8 1/2" (26.1 x 21.6 cm); sheet: 25 1/2 x 19 5/8" (64.7 x 49.8 cm)

The Museum of Modern Art, New York. Deborah Wye Endowment Fund



JOHN ARMLEDER (Swiss, born 1948)

Untitled

1992

One from a portfolio of sixteen relief prints

composition: 9 7/16 x 7 15/16" (23.9 x 20.2 cm); sheet: 26 5/8 x 19 5/8" (67.7 x 49.8 cm)

The Museum of Modern Art, New York. Deborah Wye Endowment Fund



JOHN ARMLEDER (Swiss, born 1948)

Untitled

1992

One from a portfolio of sixteen relief prints

composition: 10 5/8 x 8 7/8" (27 x 22.5 cm); sheet: 25 1/2 x 19 5/8" (64.7 x 49.8 cm)

The Museum of Modern Art, New York. Deborah Wye Endowment Fund



JOHN ARMLEDER (Swiss, born 1948)

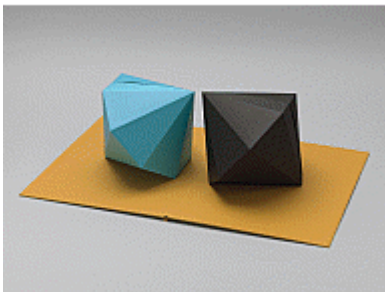
Untitled

1992

One from a portfolio of sixteen relief prints

composition: 10 1/16 x 7 13/16" (25.6 x 19.8 cm); sheet: 25 1/2 x 19 5/8" (64.7 x 49.8 cm)

The Museum of Modern Art, New York. Deborah Wye Endowment Fund



TAUBA AUERBACH (American, born 1981)

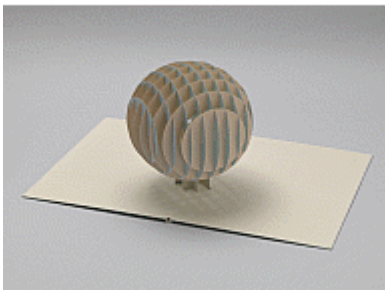
Gem from [2,3]

2011

One from a boxed set of six die-cut folios

overall (open): 20 1/4 x 32 5/16 x 9 7/16" (51.5 x 82 x 24 cm); overall (closed): 20 1/4 x 16 5/16 x 3/8" (51.5 x 41.5 x 1 cm)

The Museum of Modern Art, New York. Committee on Prints and Illustrated Books Fund



TAUBA AUERBACH (American, born 1981)

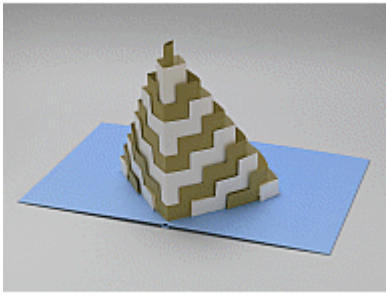
Sphere from [2,3]

2011

One from a boxed set of six die-cut folios

overall (open): 20 1/4 x 32 5/16 x 13 3/8" (51.5 x 82 x 34 cm); overall (closed): 20 1/4 x 16 1/8 x 11/16" (51.5 x 41 x 1.8 cm)

The Museum of Modern Art, New York. Committee on Prints and Illustrated Books Fund



TAUBA AUERBACH (American, born 1981)

Ziggurat from [2,3]

2011

One from a boxed set of six die-cut folios

overall (open): 20 1/4 x 32 5/16 x 9 7/16" (51.5 x 82 x 24 cm); overall (closed):

20 1/4 x 16 1/8 x 9/16" (51.5 x 41 x 1.5 cm)

The Museum of Modern Art, New York. Committee on Prints and Illustrated Books Fund



FIONA BANNER (British, born 1966)

Table Stops

2000

Series of seven glazed ceramic multiples

overall (each): various dimensions

The Museum of Modern Art, New York. Mary Ellen Oldenburg Fund



SARAH CROWNER (American, born 1974)

Selective Geometries

2009

Artist's book

Cover: 8 1/2 x 8 5/8" (21.6 x 21.9 cm)

The Museum of Modern Art Library



SARAH CROWNER (American, born 1974)

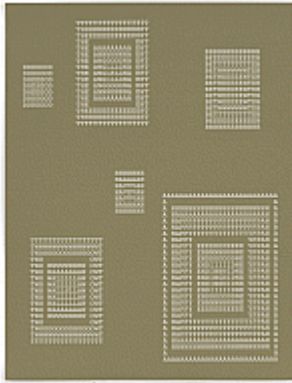
Selective Geometries

2009

Artist's book

Cover: 8 1/2 x 8 5/8" (21.6 x 21.9 cm)

Collection the artist



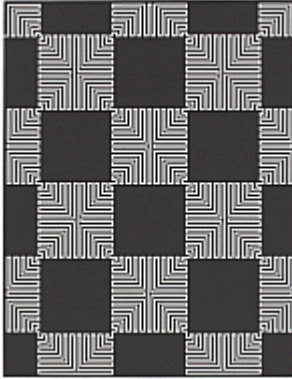
PHILIPPE DECRAUZAT (Swiss, born 1974)

Untitled from D.T.A.B.T.W.H.A.H.E.

2010

One from a portfolio of four screenprints, three double-sided composition and sheet (each): 37 x 28 3/4" (94 x 73 cm)

The Museum of Modern Art, New York. General Print Fund



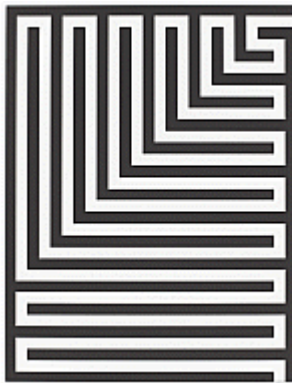
PHILIPPE DECRAUZAT (Swiss, born 1974)

Untitled from D.T.A.B.T.W.H.A.H.E.

2010

One from a portfolio of four screenprints, three double-sided composition and sheet (each): 37 x 28 3/4" (94 x 73 cm)

The Museum of Modern Art, New York. General Print Fund



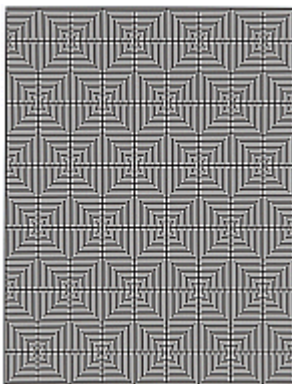
PHILIPPE DECRAUZAT (Swiss, born 1974)

Untitled from D.T.A.B.T.W.H.A.H.E.

2010

One from a portfolio of four screenprints, three double-sided composition and sheet (each): 37 x 28 3/4" (94 x 73 cm)

The Museum of Modern Art, New York. General Print Fund



PHILIPPE DECRAUZAT (Swiss, born 1974)

Untitled from D.T.A.B.T.W.H.A.H.E.

2010

One from a portfolio of four screenprints, three double-sided composition and sheet (each): 37 x 28 3/4" (94 x 73 cm)

The Museum of Modern Art, New York. General Print Fund



HANS-PETER FELDMANN (German, born 1941)
Abstrakte Kunst from the series Ex Libris
2005 (originally published 1954)
Artist's book with offset bookplate
overall (closed): 10 9/16 x 8 1/4 x 3/8" (26.8 x 21 x 1 cm)
The Museum of Modern Art, New York. Acquired through the generosity of an anonymous donor in honor of Glenn D. Lowry



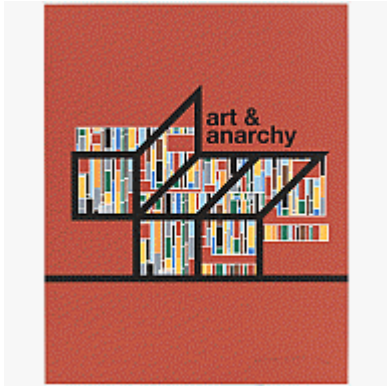
RYAN GANDER (British, born 1976)
I've got the money if you've got the time
2011
Set of eighteen lithographs
composition and sheet (each): 27 x 18 3/4" (68.6 x 47.6 cm)
The Museum of Modern Art, New York. Fund for the Twenty-First Century



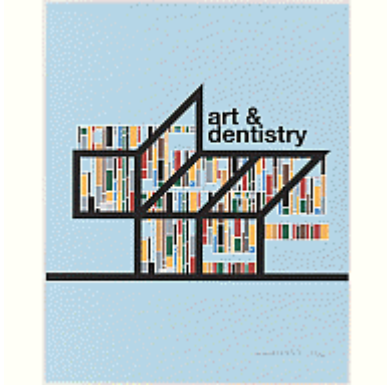
LIAM GILLICK (British, born 1964)
Literally No Place (for Parkett no. 61)
2001
Multiple of Plexiglas and aluminum
Overall (each): 9 15/16 x 8 1/4" (25.3 x 20.9 cm)
Overall (Eye on Europe config.): 22 7/16 x 10 x 10" (57 x 25.4 x 25.4 cm)
Overall (As Shown): 22 7/16 x 10 x 10" (57 x 25.4 x 25.4 cm)
The Museum of Modern Art, New York. Alexandra Herzan Fund



LIAM GILLICK (British, born 1964)
Agriculture
2011
One from a portfolio of six screenprints
composition: 16 9/16 x 25 9/16" (42 x 64.9 cm); sheet: 31 15/16 x 25 9/16" (81.2 x 64.9 cm)
The Museum of Modern Art, New York. Committee on Prints and Illustrated Books Fund



LIAM GILLICK (British, born 1964)
Anarchy
2011
One from a portfolio of six screenprints
composition: 16 9/16 x 25 9/16" (42 x 64.9 cm); sheet: 31 15/16 x 25 9/16" (81.2 x 64.9 cm)
The Museum of Modern Art, New York. Committee on Prints and Illustrated Books Fund



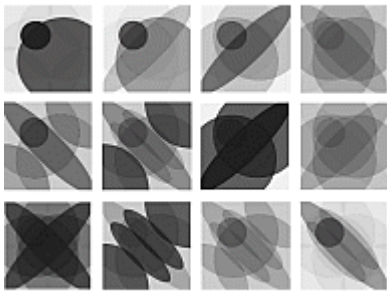
LIAM GILLICK (British, born 1964)
Dentistry
2011
One from a portfolio of six screenprints
composition: 16 9/16 x 25 9/16" (42 x 64.9 cm); sheet: 31 15/16 x 25 9/16" (81.2 x 64.9 cm)
The Museum of Modern Art, New York. Committee on Prints and Illustrated Books Fund



WADE GUYTON (American, born 1972)
Untitled
2009
Digital print on plywood
overall: 96 x 48 x 3/4" (243.8 x 121.9 x 1.9 cm)
The Museum of Modern Art, New York. Acquired through the generosity of Peter H. Friedland



NADIA KAABI-LINKE (Tunisian, born 1978)
Berlin à fleur de peau
2010
Eleven transfer prints of forensic fingerprint powder on acrylic, with nails
each: 17 11/16 x 25 9/16 x 1/4" (45 x 65 x 0.6 cm); installation variable
The Museum of Modern Art, New York. Fund for the Twenty-First Century



JANICE KERBEL (Canadian, born 1969)

Cue (Act 2)

2012

Series of twelve screenprints

composition (each): 17 15/16 x 17 15/16" (45.5 x 45.5 cm); sheet (each): 21 15/16 x 21 15/16" (55.7 x 55.7 cm)

The Museum of Modern Art, New York. Committee on Prints and Illustrated Books Fund



SHERRIE LEVINE (American, born 1947)

After Duchamp from Meltdown

1989

One from a portfolio of four woodcuts

composition 23 5/8 x 18" (60 x 45.8 cm); sheet 36 3/4 x 25 3/4" (93 x 65.4 cm)

The Museum of Modern Art, New York. Brook and Roger S. Berling Fund



SHERRIE LEVINE (American, born 1947)

After Kirchner from Meltdown

1989

One from a portfolio of four woodcuts

composition: 24 x 18 1/16" (61 x 45.8 cm); sheet: 36 5/8 x 25 3/4" (93 x 65.4 cm)

The Museum of Modern Art, New York. Brook and Roger S. Berling Fund



SHERRIE LEVINE (American, born 1947)

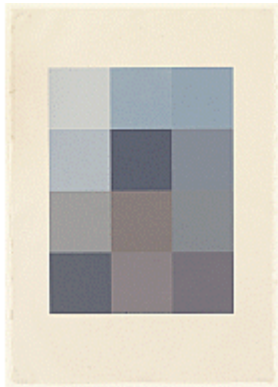
After Mondrian from Meltdown

1989

One from a portfolio of four woodcuts

composition: 24 x 18 1/16" (61 x 45.8 cm); sheet: 36 5/8 x 25 3/4" (93 x 65.4 cm)

The Museum of Modern Art, New York. Brook and Roger S. Berling Fund



SHERRIE LEVINE (American, born 1947)

After Monet from Meltdown

1989

One from a portfolio of four woodcuts

composition: 24 x 18 1/16" (61 x 45.8 cm); sheet: 36 5/8 x 25 3/4" (93 x 65.4 cm)

The Museum of Modern Art, New York. Brook and Roger S. Berlind Fund



JORGE PARDO (American, born 1963)

Program

2012

Portfolio of fifteen screenprints

sheet (each): 39 3/8 x 27 9/16" (100 x 70 cm)

The Museum of Modern Art, New York. Sue and Edgar Wachenheim III Endowment Fund



STEPHEN PRINA (American, born 1954)

Exquisite Corpse: The Complete Paintings of Manet, 41 of 556, Nymphes Surprise (The Startled Nymph), 1861, Nasjonalgalleriet, Oslo

1988

Ink wash and offset lithograph

sheet (.a): 13 3/4 x 18 1/8" (34.9 x 46 cm); sheet (.b): 25 3/4 x 32 3/4" (65.4 x 83.2 cm)

The Museum of Modern Art, New York. Sarah C. Epstein Fund



R. H. QUAYTMAN (American, born 1961)

Orchard Spreadsheet

2009

Digital print

composition: 77 15/16 x 44 5/16" (198 x 112.6 cm); sheet: 80 3/4 x 49 7/8" (205.1 x 126.7 cm)

The Museum of Modern Art, New York. Committee on Prints and Illustrated Books Fund

JAMES SIENA (American, born 1957)

Sequence One

2009-10

Illustrated book with 36 woodcuts

page (each): 16 15/16 x 13 7/16" (43 x 34.1 cm); overall (closed): 17 x 13 7/16 x 1 1/8" (43.2 x 34.2 x 2.8 cm)

The Museum of Modern Art, New York. General Print Fund



JOSH SMITH (American, born 1976)

Untitled

2007

Bookcase containing a set of 28 artist's books

Overall: 10 x 24 x 6" (25.4 x 61 cm)

The Museum of Modern Art, New York. Monroe Wheeler Fund



CHEYNEY THOMPSON (American, born 1975)

Sets of Color from Robho to Storage

2006

Series of twenty-five offset lithographs

sheet (each, approx.): 16 3/8 x 11" (41.6 x 28 cm); frame (each): 19 1/2 x 14 5/16 x 1" (49.5 x 36.3 x 2.5 cm)

The Museum of Modern Art, New York. Gift of Martin and Rebecca Eisenberg



CHARLINE VON HEYL (German, born 1960)

Untitled

2007

Series of ten monoprints with lithograph, woodcut, screenprint, and digital print, with ink, acrylic, and collage additions

sheet (each, approx.): 30 1/8 x 22 1/2" (76.5 x 57.2 cm)

The Museum of Modern Art, New York. Fund for the Twenty-First Century





KELLEY WALKER (American, born 1969)
 Untitled from the series Andy Warhol and Sonny Liston fly on Braniff. (When you got it - flaunt it.)
 2005-08
 Offset lithograph
 composition: 36 1/4 x 25 1/2" (92 x 64.8 cm); sheet: 40 1/16 x 28 1/16" (101.8 x 71.2 cm)
 The Museum of Modern Art, New York. Gift of the artist



KELLEY WALKER (American, born 1969)
 Untitled from the series Andy Warhol and Sonny Liston fly on Braniff. (When you got it - flaunt it.)
 2005-08
 Offset lithograph
 composition: 36 1/4 x 25 1/2" (92 x 64.8 cm); sheet: 40 1/16 x 27 15/16" (101.8 x 71 cm)
 The Museum of Modern Art, New York. Gift of the artist



KELLEY WALKER (American, born 1969)
 Untitled from the series Andy Warhol and Sonny Liston fly on Braniff. (When you got it - flaunt it.)
 2005-08
 Offset lithograph
 composition: 27 1/8 x 38 7/8" (68.9 x 98.8 cm); sheet: 27 7/16 x 39 1/16" (69.7 x 99.2 cm)
 The Museum of Modern Art, New York. Gift of the artist



DAN WALSH (American, born 1960)
 OGV-Blackgreen from Untitled (OGV-Blackviolet, OGV-Blackgreen, and OGV-Blackorange)
 2007
 One from a set of three woodcuts
 composition: 21 1/2 x 47 1/2" (54.6 x 120.7 cm); sheet: 23 x 49" (58.4 x 124.5 cm)
 The Museum of Modern Art, New York. Fund for the Twenty-First Century



DAN WALSH (American, born 1960)
OGV-Blackorange from Untitled (OGV-Blackviolet, OGV-Blackgreen, and OGV-Blackorange)
2007
One from a set of three woodcuts
composition: 21 1/2 x 47 1/2" (54.6 x 120.7 cm); sheet: 23 x 49" (58.4 x 124.5 cm)
The Museum of Modern Art, New York. Fund for the Twenty-First Century



DAN WALSH (American, born 1960)
OGV-Blackviolet from Untitled (OGV-Blackviolet, OGV-Blackgreen, and OGV-Blackorange)
2007
One from a set of three woodcuts
composition: 21 1/2 x 47 1/2" (54.6 x 120.7 cm); sheet: 23 x 49" (58.4 x 124.5 cm)
The Museum of Modern Art, New York. Fund for the Twenty-First Century



JAMES WELLING (American, born 1951)
Frolic Architecture
2009
Illustrated book with ten photograms, and one supplementary photogram with poem
page: 10 15/16 x 8 3/8" (27.8 x 21.2 cm); overall: 11 x 8 11/16 x 13/16" (28 x 22 x 2 cm); sheet (separate signed print): 10 15/16 x 16 15/16" (27.8 x 43 cm)
The Museum of Modern Art, New York. Monroe Wheeler Fund