

***New to the Print Collection: Matisse to Bourgeois***

**The Paul J. Sachs Prints and Illustrated Books Galleries, 2nd floor**

**The Museum of Modern Art, New York**

**June 13, 2012–January 7, 2013**



**Thomas Bayrle, German, born 1937**

*VW Red*

1969

Screenprint

Composition and sheet: 22 7/8 x 32 1/2" (58.1 x 82.5 cm)

Publisher and printer: the artist, Frankfurt

Edition: 25

Gertrud A. Mellon Fund

404.1970



**Thomas Bayrle, German, born 1937**

*Chairs Up*

1970

Screenprint

Composition and sheet: 23 7/16 x 16 9/16" (59.5 x 42 cm)

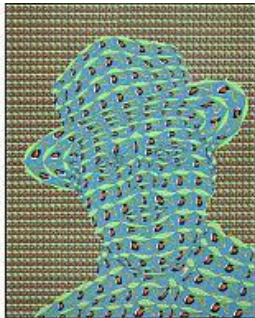
Publisher: the artist, Frankfurt

Printer: Klaus Menzel, Wiesbaden, Germany

Edition: proof before the edition of 100

Mary Ellen Oldenburg Fund

98.2010



**Thomas Bayrle, German, born 1937**

*Orson Welles*

1971

Screenprint

Composition: 29 15/16 x 23 13/16" (76 x 60.5 cm); sheet: 29 15/16 x 23 13/16" (76 x 60.5 cm)

Publisher: the artist, Frankfurt

Printer: Klaus Menzel, Wiesbaden, Germany

Edition: proof before the edition of 50

Mary Ellen Oldenburg Fund

99.2010



**Thomas Bayrle, German, born 1937**

*Lufthansa*

1982

Offset lithograph

Composition: 17 15/16 x 26 1/8" (45.5 x 66.4 cm); sheet: 19 3/16 x 27 1/4" (48.8 x 69.2 cm)

Publisher: the artist, Frankfurt

Printer: Wilk Print, Friedberg, Germany

Edition: proof before the edition of 100

Maud and Jeffrey Welles Fund

100.2010



**Mel Bochner, American, born 1940**

*Surface Dis/Tension: Offset (RB)*

1968

Offset lithograph

Sheet: 18 3/4 x 17 11/16" (47.6 x 45 cm)

Publisher: unpublished

Printer: Amalgamated Lithographers of America, New York

Edition: unique trial proof

Acquired through the generosity of Charles M. Diker in honor of Ann Temkin  
4.2012



**Louise Bourgeois, American, born France. 1911–2010**

*The Fragile*

2007

Series of twenty-nine digital prints and seven screenprints, thirty with dye additions

Sheet (each approx.): 11 1/2 x 9 1/2" (29.2 x 24.1 cm)

Publisher: Carolina Nitsch Editions and Lison Editions, New York

Printer: Dye-Namix, New York

Edition: 7

Gift of the artist

1353.2009.1-36

**On view in public space outside entrance to Print Galleries, 2nd floor**



**Louise Bourgeois, American, born France. 1911–2010**

*Just Like Me*

2007

Etching

Plate: 59 3/8 x 21 1/2" (150.8 x 54.6 cm); sheet: 59 3/8 x 21 1/2" (150.8 x 54.6 cm)

Publisher: Osiris Editions, New York

Printer: Wingate Studio, Hinsdale, New Hampshire

Edition: 17

Gift of the Louise Bourgeois Trust

258.2011



**Louise Bourgeois, American, born France. 1911–2010**

*I See You!!*

2008

Etching

Plate: 55 1/2 x 21 5/8" (141 x 55 cm); sheet: 59 1/8 x 24 1/8" (150.2 x 61.3 cm)

Publisher: Osiris Editions, New York

Printer: Wingate Studio, Hinsdale, New Hampshire

Edition: 9

Gift of the Louise Bourgeois Trust

265.2011



**Marcel Broodthaers, Belgian, 1924–1976**

*At your supplier (Vinegar of Eagles) (Chez votre fournisseur [Le Vinaigre des Aigles])*

1968

Screenprinted vacuum-formed plastic

Overall: 32 3/16 x 47 1/16 x 1 9/16" (81.8 x 119.5 x 4 cm)

Publisher: the artist, Brussels

Fabricator: unknown, Brussels

Edition: 7

Partial gift of the Daled Collection and partial purchase through the generosity of Maja Oeri and Hans Bodenmann, Sue and Edgar Wachenheim III, Marlene Hess and James D. Zirin, Agnes Gund, Marie-Josée and Henry R. Kravis, and Jerry I. Speyer and Katherine G. Farley

653.2011



**Marcel Broodthaers, Belgian, 1924–1976**

*At your supplier (Vinegar of Eagles) (Chez votre fournisseur [Le Vinaigre des Aigles])*

1968

Screenprinted vacuum-formed plastic

Overall: 32 3/16 x 46 7/8 x 1 9/16" (81.8 x 119 x 4 cm)

Publisher: the artist, Brussels

Fabricator: unknown, Brussels

Edition: 7

Partial gift of the Daled Collection and partial purchase through the generosity of Maja Oeri and Hans Bodenmann, Sue and Edgar Wachenheim III, Marlene Hess and James D. Zirin, Agnes Gund, Marie-Josée and Henry R. Kravis, and Jerry I. Speyer and Katherine G. Farley

654.2011



**Marcel Broodthaers, Belgian, 1924–1976**

*Un Coup de dés jamais n'abolira le hasard*

1969

Illustrated book with twenty photolithographs, based on the poem

by Stéphane Mallarmé (two copies)

Page (each): 12 3/4 x 9 13/16" (32.4 x 24.9 cm); book: 12 3/4 x 9 13/16 x 1/8" (32.4 x 24.9 x 0.3 cm)

Publisher: Wide White Space Gallery, Antwerp, and Galerie Michael Werner, Cologne

Printer: unknown, Antwerp

Edition: 100

Purchase

17.1982.x1-x2



**Marcel Broodthaers, Belgian, 1924–1976**

*Puzzle*

1969

Screenprinted vacuum-formed plastic

Overall: 32 15/16 x 23 7/16 x 3/8" (83.6 x 59.5 x 1 cm)

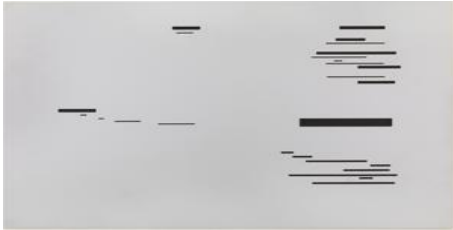
Publisher: the artist, Brussels

Printer: unknown, Brussels

Edition: probably 7

Partial gift of the Daled Collection and partial purchase through the generosity of Maja Oeri and Hans Bodenmann, Sue and Edgar Wachenheim III, Marlene Hess and James D. Zirin, Agnes Gund, Marie-Josée and Henry R. Kravis, and Jerry I. Speyer and Katherine G. Farley

673.2011



**Marcel Broodthaers, Belgian, 1924–1976**

*Un Coup de dés jamais n'abolira le hazard*

1969

Artist's book on twelve aluminum plates, based on the poem by Stéphane Mallarmé

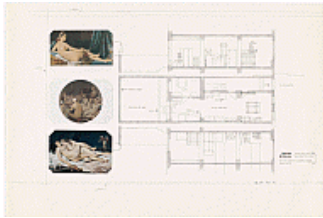
Plate (each): 12 3/4 x 19 9/16 x 1/8" (32.4 x 49.7 x 0.3 cm)

Publisher: Wide White Space Gallery, Antwerp, and Galerie Michael Werner, Cologne

Edition: 10

Partial gift of the Daled Collection and partial purchase through the generosity of Maja Oeri and Hans Bodenmann, Sue and Edgar Wachenheim III, Marlene Hess and James D. Zirin, Agnes Gund, Marie-Josée and Henry R. Kravis, and Jerry I. Speyer and Katherine G. Farley

674.2011.a-1



**Marcel Broodthaers, Belgian, 1924–1976**

*Musée-Museum*

1972

Two offset lithographs with postcards

Composition (each, irreg.): 17 x 29 1/16" (43.2 x 73.8 cm); sheet

(each): 19 7/8 x 29 1/2" (50.5 x 75 cm)

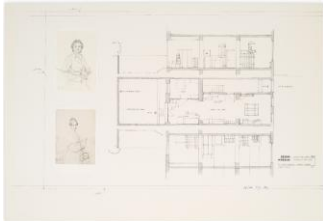
Publisher: Museumsvereins, Mönchengladbach, Germany

Printer: unknown

Edition: 100

Partial gift of the Daled Collection and partial purchase through the generosity of Maja Oeri and Hans Bodenmann, Sue and Edgar Wachenheim III, Marlene Hess and James D. Zirin, Agnes Gund, Marie-Josée and Henry R. Kravis, and Jerry I. Speyer and Katherine G. Farley

679.2011.1-2



**Alberto Burri, Italian, 1915–1995**

*17 variazioni su temi proposti per una pura ideologia fonetica* by Emilio Villa

1955

Illustrated book with cover (ink and gold leaf on canvas), scorched fabric, and ink and gold leaf on paper

Page (each approx.): 10 1/16 x 6 11/16" (25.5 x 17 cm); overall (closed):

10 1/8 x 6 3/4 x 1/2" (25.7 x 17.2 x 1.3 cm)

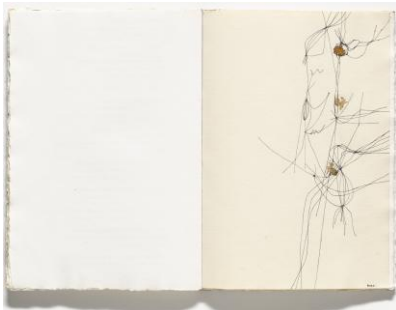
Publisher: Origine, Rome

Printer of Text: Scuola Industriale per le Arti Grafiche, Castello, Italy

Edition: one known intact set from an edition of approximately 29 variants

General Print Fund in honor of Deborah Wye

83.2011.1-3



**Luis Camnitzer, Uruguayan, born 1937**

*Living Room (Living-Comedor)*

1968

Artist's book

Overall: 14 5/8 x 12 x 5/8" (37.1 x 30.5 x 1.6 cm); constructed: 14 5/8 x 22 3/8

x 5 1/8" (37.1 x 56.8 x 13 cm)

Publisher: New York Graphic Workshop, New York

Printer: Colonial Press, Cedar Knolls, New Jersey

Edition: artist's proof before the edition of 100

Latin American and Caribbean Fund through gift of Estrellita B. Brodsky

917.2010





**Vija Celmins, American, born Latvia 1938**

*Amérique*

2009-10

Aquatint with engraving, etching, and drypoint, with pencil additions, in artist's frame

Overall (with frame): 25 5/16 x 18 15/16 x 7/8" (64.3 x 48.1 x 2.2cm)

Publisher: the artist, New York, and Simmelink/Sukimoto Editions, Olympia, Washington

Printer: Simmelink/Sukimoto Editions, Olympia, Washington

Edition: 22

Committee on Prints and Illustrated Books Fund

1000.2011



**Vija Celmins, American, born Latvia 1938**

*Starfield*

2010

Mezzotint and drypoint

Composition: 22 15/16 x 32 3/4" (58.3 x 83.2 cm); plate: 23 11/16 x 33 7/16" (60.2 x 85 cm); sheet: 26 1/4 x 35 3/4" (66.7 x 90.8 cm)

Publisher: the artist, New York, and Simmelink/Sukimoto Editions, Olympia, Washington

Printer: Simmelink/Sukimoto Editions, Olympia, Washington

Edition: 30

The Lily Auchincloss Fund

1001.2011



**James Ensor, Belgian, 1860–1949**

*The Deadly Sins (Les Péchés capitaux)*

1904 (prints executed 1888-1904)

Portfolio of eight etchings with colored pencil and watercolor additions

Dimensions vary

Publisher: the artist, Ostend, Belgium

Printer: possibly Jean-Baptiste Van Campenhout, Brussels

Edition: approx. 50-100 (approx. 20 with hand coloring)

Riva Castleman Endowment Fund and The Print Associates Fund

1007.2011.1-8



**James Ensor, Belgian, 1860–1949**

*The Deadly Sins Dominated by Death (Les Péchés capitaux dominés par la mort)* from *The Deadly Sins (Les Péchés capitaux)*

1904 (portfolio published 1904)

One from a portfolio of eight etchings with colored pencil and watercolor additions

Composition: 3 1/4 x 5 1/4" (8.2 x 13.3 cm); plate: 3 1/2 x 5 1/4" (8.9 x 13.3 cm); sheet: 6 5/16 x 9 3/4" (16 x 24.7 cm)

Publisher: the artist, Ostend, Belgium

Printer: possibly Jean-Baptiste Van Campenhout, Brussels

Edition: approx. 50-100 (approx. 20 with hand coloring)

Riva Castleman Endowment Fund and The Print Associates Fund

1007.2011.1





**James Ensor, Belgian, 1860–1949**

*Gluttony (La Gourmandise)* from *The Deadly Sins (Les Péchés capitaux)*

1904 (portfolio published 1904)

One from a portfolio of eight etchings with colored pencil and watercolor additions

Composition: 3 5/8 x 5 11/16" (9.2 x 14.4 cm); plate: 3 13/16 x 5 7/8" (9.7 x 14.9 cm); sheet: 6 1/4 x 9 13/16" (15.8 x 25 cm)

Publisher: the artist, Ostend, Belgium

Printer: possibly Jean-Baptiste Van Campenhout, Brussels

Edition: approx. 50-100 (approx. 20 with hand coloring)

Riva Castleman Endowment Fund and The Print Associates Fund  
1007.2011.2



**James Ensor, Belgian, 1860–1949**

*Sloth (La Paresse)* from *The Deadly Sins (Les Péchés capitaux)*

1902 (portfolio published 1904)

One from a portfolio of eight etchings with colored pencil and watercolor additions

Composition: 3 11/16 x 5 1/4" (9.4 x 13.4 cm); plate: 3 7/8 x 5 7/16" (9.8 x 13.8 cm); sheet: 6 1/4 x 9 13/16" (15.8 x 24.9 cm)

Publisher: the artist, Ostend, Belgium

Printer: possibly Jean-Baptiste Van Campenhout, Brussels

Edition: approx. 50-100 (approx. 20 with hand coloring)

Riva Castleman Endowment Fund and The Print Associates Fund  
1007.2011.3



**James Ensor, Belgian, 1860–1949**

*Pride (L'Orgueil)* from *The Deadly Sins (Les Péchés capitaux)*

1904 (portfolio published 1904)

One from a portfolio of eight etchings with colored pencil and watercolor additions

Composition: 3 11/16 x 5 11/16" (9.3 x 14.4 cm); plate: 3 13/16 x 5 13/16" (9.7 x 14.8 cm); sheet: 5 15/16 x 9 3/4" (15.1 x 24.7 cm)

Publisher: the artist, Ostend, Belgium

Printer: possibly Jean-Baptiste Van Campenhout, Brussels

Edition: approx. 50-100 (approx. 20 with hand coloring)

Riva Castleman Endowment Fund and The Print Associates Fund  
1007.2011.4



**James Ensor, Belgian, 1860–1949**

*Anger (La Colère)* from *The Deadly Sins (Les Péchés capitaux)*

1904 (portfolio published 1904)

One from a portfolio of eight etchings with colored pencil and watercolor additions

Composition: 3 11/16 x 5 11/16" (9.3 x 14.4 cm); plate: 3 13/16 x 5 13/16" (9.7 x 14.8 cm); sheet: 6 3/16 x 9 13/16" (15.7 x 25 cm)

Publisher: the artist, Ostend, Belgium

Printer: possibly Jean-Baptiste Van Campenhout, Brussels

Edition: approx. 50-100 (approx. 20 with hand coloring)

Riva Castleman Endowment Fund and The Print Associates Fund  
1007.2011.5

**James Ensor, Belgian, 1860–1949**

*Avarice (L'Avarice)* from *The Deadly Sins (Les Péchés capitaux)*

1904 (portfolio published 1904)

One from a portfolio of eight etchings with colored pencil and watercolor additions

Composition: 3 11/16 x 5 5/8" (9.3 x 14.3 cm); plate: 3 13/16 x 5 13/16" (9.7 x 14.8 cm); sheet: 6 5/16 x 9 13/16" (16 x 24.9 cm)

Publisher: the artist, Ostend, Belgium

Printer: possibly Jean-Baptiste Van Campenhout, Brussels

Edition: approx. 50-100 (approx. 20 with hand coloring)

Riva Castleman Endowment Fund and The Print Associates Fund

1007.2011.6



**James Ensor, Belgian, 1860–1949**

*Envy (L'Envie)* from *The Deadly Sins (Les Péchés capitaux)*

1904 (portfolio published 1904)

One from a portfolio of eight etchings with colored pencil and watercolor additions

Composition: 3 5/8 x 5 11/16" (9.2 x 14.4 cm); plate: 3 13/16 x 5 13/16" (9.7 x 14.8 cm); sheet: 6 1/4 x 9 13/16" (15.8 x 24.9 cm)

Publisher: the artist, Ostend, Belgium

Printer: possibly Jean-Baptiste Van Campenhout, Brussels

Edition: approx. 50-100 (approx. 20 with hand coloring)

Riva Castleman Endowment Fund and The Print Associates Fund

1007.2011.7



**James Ensor, Belgian, 1860–1949**

*Lust (La Luxure)* from *The Deadly Sins (Les Péchés capitaux)*

1888 (portfolio published 1904)

One from a portfolio of eight etchings with colored pencil and watercolor additions

Composition: 3 9/16 x 5 1/8" (9.1 x 13 cm); plate: 4 3/16 x 5 3/8" (10.7 x 13.6 cm); sheet: 6 1/4 x 9 3/4" (15.9 x 24.8 cm)

Publisher: the artist, Ostend, Belgium

Printer: possibly Jean-Baptiste Van Campenhout, Brussels

Edition: approx. 50-100 (approx. 20 with hand coloring)

Riva Castleman Endowment Fund and The Print Associates Fund

1007.2011.8



**James Ensor, Belgian, 1860–1949**

*Hop-Frog's Revenge (La Vengeance de Hop-Frog)*

1898

Etching and drypoint

Plate: 14 1/2 x 9 13/16" (36.9 x 24.9 cm); sheet: 19 11/16 x 12 13/16" (50 x 32.5 cm)

Publisher: the artist, Ostend, Belgium

Printer: possibly Jean-Baptiste Van Campenhout, Brussels

Edition: approx. 50-100

Gift of Victor S. Riesenfeld

322.1958





**James Ensor, Belgian, 1860–1949**

*Hop-Frog's Revenge (La Vengeance de Hop-Frog)*

1898

Etching and drypoint with colored pencil and watercolor additions

Plate: 13 3/4 x 9 5/8" (35 x 24.5 cm); sheet: 15 1/2 x 11 3/16" (39.4 x 28.4 cm)

Publisher: the artist, Ostend, Belgium

Printer: possibly Jean-Baptiste Van Campenhout, Brussels

Edition: approx. 50-100 (approx. 20 with hand coloring)

The Sue and Edgar Wachenheim III Endowment for Prints and Illustrated Books

1006.2011



**Jean Fautrier, French, 1898–1964**

*La Femme de ma vie* by André Frénaud

1947

Illustrated book with five etching and aquatints, relief printed; one etching and

aquatint, relief printed, folded and mounted on lace; and heliogravure text

Page (each): 11 5/16 x 7 3/16" (28.8 x 18.3 cm); overall (closed): 11 7/8 x 7

5/8 x 1 1/8" (30.2 x 19.3 x 2.8 cm)

Publisher: Librairie Auguste Blaizot, Paris

Printer: the artist, Chatenay, France

Edition: 21

Monroe Wheeler Fund

279.2011



**Jasper Johns, American, born 1930**

*Flags I*

1973

Screenprint

Composition (irreg.): 26 9/16 x 33 7/16" (67.5 x 85 cm); sheet: 27 3/8 x 35 1/4" (69.5 x 89.5 cm)

Publisher: the artist, New York, and Simca Print Artists, New York

Printer: Simca Print Artists, New York

Edition: artist's proof before the edition of 65

Gift of Barbara Bertozzi Castelli

1012.2011



**Jasper Johns, American, born 1930**

*Untitled*

2011

Aquatint

Plate: 35 13/16 x 26 3/4" (91 x 68 cm); sheet: 43 5/8 x 33 11/16" (110.8 x 85.5 cm)

Publisher and printer: Universal Limited Art Editions, Bay Shore, New York

Edition: 60

Acquired through the generosity of Mary M. and Sash A. Spencer

729.2012





**Käthe Kollwitz, German, 1867–1945**

*Self-Portrait, Hand at the Forehead (Selbstbildnis mit der Hand an der Stirn)*

1910, published c. 1946

Etching and drypoint

Plate: 6 1/16 x 5 1/2" (15.4 x 13.9 cm); sheet: 13 1/8 x 9 13/16"  
(33.3 x 24.9 cm)

Publisher: Alexander von der Becke, Verlag des graphischen Werkes von Käthe Kollwitz, Berlin

Printer: Otto Felsing, Berlin

Edition: unknown, from the posthumous edition

Gift of Mrs. Milton Weill

246.1982



**Käthe Kollwitz, German, 1867–1945**

*Frontal Self-Portrait (Selbstbildnis von vorn)*

1922–23

Woodcut

Composition: 5 7/8 x 6 1/8" (15 x 15.6 cm); sheet: 10 11/16 x 8 7/16"  
(27.1 x 21.4 cm)

Publisher: Emil Richter, Dresden

Printer: possibly Fritz Voigt, Berlin

Edition: 275

Modern Women's Fund

730.2012



**Käthe Kollwitz, German, 1867–1945**

*Self-Portrait (Selbstbildnis)*

1934

Lithograph

Composition (irreg.): 8 1/8 x 7 3/8" (20.6 x 18.7 cm); sheet: 14 3/4 x 10 5/8"  
(37.5 x 27 cm)

Publisher: Alexander von der Becke, Verlag des graphischen Werkes von Käthe Kollwitz, Berlin

Printer: unknown

Edition: approximately 80

Modern Women's Fund

731.2012



**Glenn Ligon, American, born 1960**

*Untitled (Four Etchings)*

1992

Series of four etching and aquatints

Plate (each): 23 9/16 x 15 3/4" (59.8 x 40 cm); sheet (each): 25 1/8 x 17 3/8"  
(63.8 x 44.2 cm)

Publisher: Max Protetch Gallery, New York

Printer: Burnet Editions, New York

Edition: 45

Gift of Gwen and Peter Norton

1131.2011.a-d





**Glenn Ligon, American, born 1960**

*Self-Portrait at Eleven Years Old*

2004

Stenciled linen pulp

Sheet: 35 5/8 x 29 15/16" (90.5 x 76 cm)

Publisher and printer: Dieu Donn  Papermill, New York

Edition: 20

Gift of Gwen and Peter Norton

1133.2011

**On view in public space near Print Galleries, 2nd floor**

**Christian Marclay, American, born 1955**

*Allover (Genesis, Travis Tritt, and others)*

2008

Cyanotype

Sheet: 51 1/2 x 97 3/4" (130.8 x 248.3 cm)

Publisher and printer: Graphicstudio, University of South Florida, Tampa

Edition: unique

Acquired through the generosity of Steven A. and Alexandra M. Cohen

123.2012



**Henri Matisse, French, 1869–1954**

*Bell Flower (Campanule)*

1913

Drypoint

Plate: 5 13/16 x 3 7/8" (14.8 x 9.8 cm); sheet: 12 13/16 x 9 1/2" (32.5 x 24.2 cm)

Publisher: the artist, Paris

Printer: unknown, Paris

Edition: 12

William Kelly Simpson (in memory of Abby Aldrich Rockefeller) and Jeanne C. Thayer Funds

678.1993



**Henri Matisse, French, 1869–1954**

*Outamaro*

1914

Etching on chine coll 

Plate: 7 1/16 x 5 1/8" (17.9 x 13 cm); sheet: 14 3/16 x 10 13/16" (36 x 27.5 cm)

Publisher: the artist, Paris

Printer: unknown, Paris

Edition: proof before the edition of 15

Gift of Abby Aldrich Rockefeller

424.1940



**Henri Matisse, French, 1869–1954**

*Portrait of Walter Pach (Portrait de Walter Pach)*

1914

Etching on chine collé

Plate: 6 5/16 x 2 3/8" (16.1 x 6 cm); sheet: 11 x 7 1/2" (27.9 x 19cm)

Publisher: the artist, Paris

Printer: unknown, Paris

Edition: 15

Stephen C. Clark Fund

43.1951



**Henri Matisse, French, 1869–1954**

*Loulou, Face from Front (Loulou, visage de face)*

1914-15

Etching on chine collé

Plate: 6 5/16 x 2 3/8" (16 x 6.1cm); sheet: 10 7/8 x 7 3/8" (27.7 x 18.8 cm)

Publisher: the artist, Paris

Printer: unknown, Paris

Edition: proof before the edition of 15

Stephen C. Clark Fund

61.1951



**Henri Matisse, French, 1869–1954**

*Fruits on a Moroccan Plate (Fruits sur plat marocain)*

1914-15

Monotype

Plate: 2 1/4 x 6 3/16" (5.7 x 15.7 cm); sheet: 7 x 10 13/16" (17.8 x 27.5 cm)

Publisher: unpublished

Printer: the artist, Paris

Edition: unique

Abby Aldrich Rockefeller Fund

615.1954



**Henri Matisse, French, 1869–1954**

*Interior: Young Woman Drawing Fruit (Interieur: jeune femme dessinant des fruits)*

1914-15

Monotype on chine collé

Plate: 3 13/16 x 5 7/8" (9.7 x 15 cm); sheet: 10 15/16 x 14 1/2" (27.8 x 36.9 cm)

Publisher: unpublished

Printer: the artist, Paris

Edition: unique

Gift of Abby Aldrich Rockefeller (by exchange)

113.1956



**Henri Matisse, French, 1869–1954**

*Standing Nude, Arms Folded (Nu debout, les bras croisés)*

1915

Monotype on chine collé

Plate: 6 15/16 x 5 1/16" (17.6 x 12.8 cm); sheet: 14 3/4 x 11" (37.5 x 27.9 cm)

Publisher: unpublished

Printer: the artist, Paris

Edition: unique

Frank Crowninshield Fund

5.1945



**Henri Matisse, French, 1869–1954**

*Double Portrait of Josette Gris (Double portrait de Josette Gris)*

1915

Etching on chine collé

Plate: 5 1/16 x 7 1/16" (12.9 x 17.9 cm); sheet: 9 13/16 x 12 13/16"  
(25 x 32.5 cm)

Publisher: the artist, Paris

Printer: unknown, Paris

Edition: proof before the edition of 15

Abby Aldrich Rockefeller Fund

504.1949



**Henri Matisse, French, 1869–1954**

*Emma's Face Turned to the Left I (Visage d'Emma tourné à gauche I)*

1915

Monotype on chine collé

Plate: 7 11/16 x 5 13/16" (19.6 x 14.8 cm); sheet: 14 3/4 x 10 5/8"  
(37.4 x 27 cm)

Publisher: unpublished

Printer: the artist, Paris

Edition: unique

Acquired through the generosity of Jerry I. Speyer

1015.2011



**Henri Matisse, French, 1869–1954**

*Emma with Long Neck I (Emma au long cou I)*

1915

Monotype on chine collé

Plate: 6 1/4 x 2 5/16" (15.9 x 5.9 cm); sheet: 12 1/2 x 7 15/16" (31.8 x 20.2 cm)

Publisher: unpublished

Printer: the artist, Paris

Edition: unique

Gift of The International Council of The Museum of Modern Art and Alexandra

A. Herzan in memory of Joanne M. Stern

734.2012



**Pablo Picasso, Spanish, 1881–1973**

*The Weeping Woman, I (La Femme qui pleure, I) State III*

1937

Drypoint, aquatint, etching, and scraper

Plate: 27 1/8 x 19 1/2" (68.9 x 49.5 cm); sheet: 30 5/16 x 22 5/16"  
(77 x 56.7 cm)

Publisher: the artist, Paris

Printer: Lacourière, Paris

Edition: 15

Acquired through the generosity of the Katsko Suzuki Memorial Fund, the Riva

Castleman Endowment Fund, David Rockefeller, The Philip and Lynn Straus

Foundation Fund, and Agnes Gund and Daniel Shapiro; Linda and Bill

Goldstein, Mr. and Mrs. Herbert D. Schimmel, the Edward John Noble

Foundation, and the Associates of the Department of Prints and Illustrated

Books; The Cowles Charitable Trust, Nelson Blitz, Jr. with Catherine Woodard

and Perri and Allison Blitz, Mary Ellen Meehan, and Anna Marie and Robert F.

Shapiro; and Ruth and Louis Aledort, Carol and Bert Freidus, David S.

Orentreich, M.D., and Susan and Peter Ralston

445.1999





**Pablo Picasso, Spanish, 1881–1973**

*The Weeping Woman, I (La Femme qui pleure, I)* State VII  
1937

Drypoint, aquatint, etching and scraper

Plate: 27 3/16 x 19 1/2" (69 x 49.5 cm); sheet: 30 1/2 x 22 9/16"  
(77.4 x 57.3 cm)

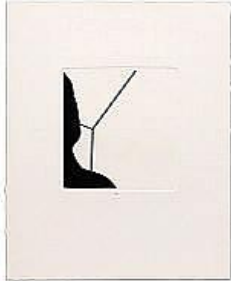
Publisher: the artist, Paris

Printer: Lacourière, Paris

Edition: 15

Acquired through the generosity of David Rockefeller, Steven A. and Alexandra M. Cohen, Debra and Leon Black, Jo Carole and Ronald S. Lauder, Sue and Edgar Wachenheim III, Joan H. Tisch, Alice and Tom Tisch, Marlene Hess and James D. Zirin, Marie-Josée and Henry Kravis, Katherine Farley and Jerry Speyer, Mary M. Spencer, Donald B. Marron, and Agnes Gund in memory of Joanne M. Stern.

1153.2011



**Liliana Porter, Argentine, born 1941**

*Man*

1967

Portfolio of ten etchings

Plate (each approx.): 7 1/16 x 7 1/16" (18 x 18 cm); sheet (each approx.):  
16 x 13 1/2" (40.6 x 34.3 cm)

Publisher: New York Graphic Workshop, New York

Printer: the artist, at the New York Graphic Workshop, New York

Edition: 2 known sets

Latin American and Caribbean Fund

128.2012.1-10



**Thomas Schütte, German, born 1954**

Untitled from *United Enemies, A Play in Ten Scenes*

1994

Offset lithograph with ink additions from a portfolio of ten offset lithographs,  
eight with ink additions

Composition: 25 3/16 x 37 1/4" (63.9 x 94.6 cm); sheet: 27 1/16 x 38 3/4"  
(68.8 x 98.4 cm)

Publisher: Yves Gevaert Éditeur, Brussels

Printer: Photogravure Steurs, Antwerp

Edition: 35

Committee on Prints and Illustrated Books Fund

130.2012.1



**Thomas Schütte, German, born 1954**

Untitled from *United Enemies, A Play in Ten Scenes*

1994

Offset lithograph with ink additions from a portfolio of ten offset lithographs,  
eight with ink additions

Composition: 25 3/16 x 37 1/4" (63.9 x 94.6 cm); sheet: 27 1/16 x 38 3/4"  
(68.8 x 98.4 cm)

Publisher: Yves Gevaert Éditeur, Brussels

Printer: Photogravure Steurs, Antwerp

Edition: 35

Committee on Prints and Illustrated Books Fund

130.2012.5



**Thomas Schütte, German, born 1954**

Untitled from *United Enemies, A Play in Ten Scenes*

1994

Offset lithograph from a portfolio of ten offset lithographs, eight with ink additions

Composition: 25 3/16 x 37 1/4" (63.9 x 94.6 cm); sheet: 27 1/16 x 38 3/4" (68.8 x 98.4 cm)

Publisher: Yves Gevaert Éditeur, Brussels

Printer: Photogravure Steurs, Antwerp

Edition: 35

Committee on Prints and Illustrated Books Fund

130.2012.6



**James Turrell, American, born 1943**

*Shanta* from *First Light*

1989-90

One from a portfolio of twenty aquatints

Plate: 39 1/8 x 27 1/4" (99.3 x 69.2 cm); sheet: 42 3/8 x 29 3/4" (107.7 x 75.5 cm)

Publisher: Peter Blum Edition, New York

Printer: Peter Kneubühler, Zurich

Edition: artist's proof before the edition of 30

Committee on Prints and Illustrated Books Fund and The Contemporary Arts Council

752.2012.2



**James Turrell, American, born 1943**

*Catso* from *First Light*

1989-90

One from a portfolio of twenty aquatints

Plate: 39 1/8 x 27 1/4" (99.4 x 69.2 cm); sheet: 42 1/2 x 29 5/8" (107.9 x 75.3 cm)

Publisher: Peter Blum Edition, New York

Printer: Peter Kneubühler, Zurich

Edition: artist's proof before the edition of 30

Committee on Prints and Illustrated Books Fund and The Contemporary Arts Council

752.2012.3



**James Turrell, American, born 1943**

*Afrum* from *First Light*

1989-90

One from a portfolio of twenty aquatints

Plate: 39 1/8 x 27 1/4" (99.4 x 69.2 cm); sheet: 42 1/2 x 29 5/8" (108 x 75.3 cm)

Publisher: Peter Blum Edition, New York

Printer: Peter Kneubühler, Zurich

Edition: artist's proof before the edition of 30

Committee on Prints and Illustrated Books Fund and The Contemporary Arts Council

752.2012.4



**James Turrell, American, born 1943**

*Munson from First Light*

1989-90

One from a portfolio of twenty aquatints

Plate: 39 1/8 x 27 5/16" (99.4 x 69.4 cm); sheet: 42 5/16 x 29 3/4" (107.5 x 75.5 cm)

Publisher: Peter Blum Edition, New York

Printer: Peter Kneubühler, Zurich

Edition: artist's proof before the edition of 30

Committee on Prints and Illustrated Books Fund and The Contemporary Arts Council

752.2012.5



**James Turrell, American, born 1943**

*Squat from First Light*

1989-90

One from a portfolio of twenty aquatints

Plate: 39 1/8 x 27 3/16" (99.4 x 69.1 cm); sheet: 42 7/16 x 29 3/4" (107.8 x 75.5 cm)

Publisher: Peter Blum Edition, New York

Printer: Peter Kneubühler, Zurich

Edition: artist's proof before the edition of 30

Committee on Prints and Illustrated Books Fund and The Contemporary Arts Council

752.2012.6



**Andy Warhol, American, 1928–1987**

Untitled from *Sunset*

1972

One from a portfolio of four screenprints

Composition and sheet: 34 1/16 x 34" (86.5 x 86.4 cm)

Publisher: David Whitney, New York

Printer: Salvatore Silkscreen Co., Inc., New York

Edition: 632 variants (including 40 portfolios of 4 unique prints each)

Promised gift of Stephen F. Dull

PG139.2012.1



**Andy Warhol, American, 1928–1987**

Untitled from *Sunset*

1972

One from a portfolio of four screenprints

Composition and sheet: 34 1/16 x 34" (86.5 x 86.4 cm)

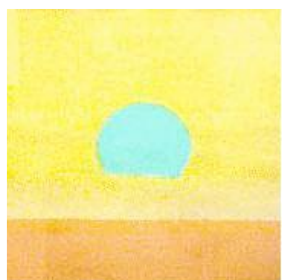
Publisher: David Whitney, New York

Printer: Salvatore Silkscreen Co., Inc., New York

Edition: 632 variants (including 40 portfolios of 4 unique prints each)

Promised gift of Stephen F. Dull

PG139.2012.2



**Andy Warhol, American, 1928–1987**

Untitled from *Sunset*

1972

One from a portfolio of four screenprints

Composition and sheet: 34 1/16 x 34" (86.5 x 86.4 cm)

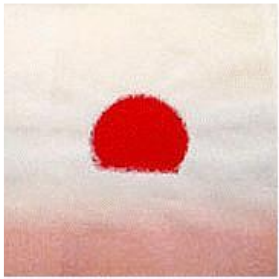
Publisher: David Whitney, New York

Printer: Salvatore Silkscreen Co., Inc., New York

Edition: 632 variants (including 40 portfolios of 4 unique prints each)

Promised gift of Stephen F. Dull

PG139.2012.3



**Andy Warhol, American, 1928–1987**

Untitled from *Sunset*

1972

One from a portfolio of four screenprints

Composition and sheet: 34 1/16 x 34" (86.5 x 86.4 cm)

Publisher: David Whitney, New York

Printer: Salvatore Silkscreen Co., Inc., New York

Edition: 632 variants (including 40 portfolios of 4 unique prints each)

Promised gift of Stephen F. Dull

PG139.2012.4



**Charles White, American, 1918–1979**

*Solid as a Rock (My God is Rock)*

1958

Linoleum cut

Composition: 38 3/16 x 14 15/16" (97 x 38 cm); sheet: 41 1/8 x 17 13/16" (104.5 x 45.2 cm)

Publisher: unpublished

Printer: the artist, Los Angeles

Edition: 5 known examples

John B. Turner Fund with additional support from Linda Barth Goldstein and Stephen F. Dull

112.2010



**Charles White, American, 1918–1979**

Untitled from *Wanted Poster Series*

1970

Lithograph

Composition and sheet: 25 x 37" (63.5 x 94 cm)

Publisher and printer: Tamarind Lithography Workshop, Los Angeles

Edition: 20

Gift of Kleiner, Bell & Co.

373.1970



**Lisa Yuskavage, American, born 1962**

*Outliers*

2011

Offset lithograph and digital print with pastel additions

Sheet: 50 x 74" (127 x 188 cm)

Publisher and printer: Universal Limited Art Editions, Bay Shore, NY

Edition: unique

Acquired through the generosity of Agnes Gund and Mary M. and Sash A. Spencer

141.2012