

James Ensor

The Museum of Modern Art, New York

June 28, 2009-September 21, 2009

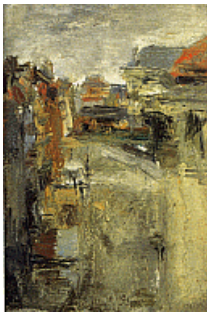
6th Floor, Special Exhibitions South The Joan and Preston Robert Tisch Gallery

1.



JAMES ENSOR Belgian, 1860-1949
A Colorist
1880
Oil on canvas
40 3/16 x 32 5/16" (102 x 82 cm)
Musées royaux des Beaux-Arts de Belgique, Brussels
2009.546

2.



JAMES ENSOR Belgian, 1860-1949
Boulevard Van Iseghem in the Rain
1880
Oil on cardboard
9 1/4 x 6 1/2" (23.5 x 16.5 cm)
Private collection
2009.551

3.



JAMES ENSOR Belgian, 1860-1949
Chinoiseries with Fans
1880
Oil on canvas
31 1/2 x 39 3/8" (80 x 100 cm)
Musées royaux des Beaux-Arts de Belgique, Brussels
2009.547

4.



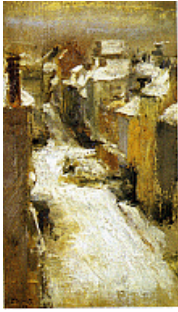
JAMES ENSOR Belgian, 1860-1949
Hippogriff
1880-83/1886-88
Black chalk on two sheets of paper, mounted on board
6 1/8 x 6 11/16" (15.5 x 17 cm)
Museum voor Schone Kunsten, Ghent
2009.604

5.



JAMES ENSOR Belgian, 1860-1949
Nude with Curtain
1880-85/1886-88
Pencil and black chalk on paper, mounted on board
8 7/8 x 6 7/16" (22.5 x 16.4 cm)
museum kunst palast, Düsseldorf.
Graphische Sammlung
2009.599

6.



JAMES ENSOR Belgian, 1860-1949
Rue de Flandre in the Snow
1880
Oil on canvas
18 1/8 x 10 1/16" (46 x 25.5 cm)
Fondation Socindec
2009.554

7.



JAMES ENSOR Belgian, 1860-1949
The Lamp-Lighter
1880
Oil on canvas
59 7/16 x 35 13/16" (151 x 91 cm)
Musées royaux des Beaux-Arts de Belgique, Brussels
2009.550

8.



JAMES ENSOR Belgian, 1860-1949
The Mystic Death of a Theologian (Elated Monks Claim the Body of the Theologian Sus Ovis, in Spite of the Resisting Bishop Friton or Friston)
1880/1885-86?
Pencil, charcoal, and black crayon on paper, mounted on canvas
38 3/16 x 32 11/16" (97 x 83 cm)
Koninklijk Museum voor Schone Kunsten, Antwerp
2009.600

9.



JAMES ENSOR Belgian, 1860-1949
The Rainbow (After the Storm)
1880
Oil on canvas
20 11/16 x 24 5/8" (52.5 x 62.5 cm)
Kunstmuseum aan zee, Ostend
2009.549

10.



JAMES ENSOR Belgian, 1860-1949
Afternoon in Ostend
1881
Oil on canvas
43 9/16 x 52 15/16" (110.7 x 134.5 cm)
Koninklijk Museum voor Schone Kunsten, Antwerp
2009.553

11.



JAMES ENSOR Belgian, 1860-1949
Portrait of the Artist's Father
1881
Oil on canvas
39 3/8 x 31 1/2" (100 x 80 cm)
Musées royaux des Beaux-Arts Belgique, Brussels
2009.552

12.



JAMES ENSOR Belgian, 1860-1949
Portrait of the Artist's Sister, Marie
1881
Charcoal on wove paper mounted on board, on stretcher
29 3/4 x 23 7/16" (75.5 x 59.5 cm)
The Art Institute of Chicago. Margaret Day Blake Collection
2009.607

13.



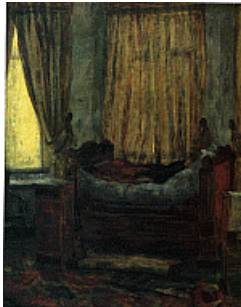
JAMES ENSOR Belgian, 1860-1949
Portrait of Willy Finch
1882
Oil on canvas
43 5/16 x 37 3/8" (110 x 95 cm)
Kunstmuseum aan zee, Ostend
2009.557

14.



JAMES ENSOR Belgian, 1860-1949
Still Life with Vegetables
1882
Oil on canvas
31 1/2 x 39 3/8" (80 x 100 cm)
Musée d'Art moderne et d'Art contemporain de la Ville de Liège
2009.613

15.



JAMES ENSOR Belgian, 1860-1949
The Lady in Distress
1882
Oil on canvas
39 9/16 x 31 1/2" (100.5 x 80 cm)
Musée d'Orsay, Paris
2009.556

16.



JAMES ENSOR Belgian, 1860-1949
The Oyster Eater
1882
Oil on canvas
81 1/2 x 59 1/16" (207 x 150 cm)
Koninklijk Museum voor Schone Kunsten, Antwerp
2009.555

17.



JAMES ENSOR Belgian, 1860-1949
Self-Portrait with a Flowered Hat
1883/1888
Oil on canvas
30 1/8 x 24 3/16" (76.5 x 61.5 cm)
Kunstmuseum aan zee, Ostend
2009.586

18.



JAMES ENSOR Belgian, 1860-1949
Sketchbook
1883-96
Conte crayon, graphite, and black chalk on paper
11 5/16 x 16 3/16" (28.7 x 41.1 cm)
Musées royaux des Beaux-Arts de Belgique, Brussels
2009.618

19.



JAMES ENSOR Belgian, 1860-1949
The Drunkards
1883
Oil on canvas
45 1/4 x 64 15/16" (115 x 165 cm)
Dexia Collection, Brussels
2009.558

20.



JAMES ENSOR Belgian, 1860-1949
The Red Apples
1883
Oil on canvas
23 5/8 x 29 1/2" (60 x 75 cm)
Group Verbaet, Belgium
2009.637

21.



JAMES ENSOR Belgian, 1860-1949
The Scandalized Masks
1883
Oil on canvas
53 1/8 x 44 1/8" (135 x 112 cm)
Musées royaux des Beaux-Arts de Belgique, Brussels
2009.559

22.



JAMES ENSOR Belgian, 1860-1949
Child with Doll
1884/1886-89 (?)
Oil on canvas
58 11/16 x 35 13/16" (149 x 91 cm)
Wallraf-Richartz-Museum & Fondation Corboud, Cologne
2009.560

23.



JAMES ENSOR Belgian, 1860-1949
My Portrait
1884
Charcoal and white chalk on paper
29 3/4 x 22 3/4" (75.5 x 57.8 cm)
Musées royaux des Beaux-Arts de Belgique, Brussels
2009.605

24.



JAMES ENSOR Belgian, 1860-1949
Rooftops of Ostend (Grand View of Ostend)
1884
Oil on canvas
58 11/16 x 81 1/8" (149 x 206 cm)
Koninklijk Museum voor Schone Kunsten, Antwerp
2009.561

25.



JAMES ENSOR Belgian, 1860-1949
Brussels Town Hall
1885
Oil on canvas
39 3/8 x 31 7/8" (100 x 81 cm)
Musée d'Art moderne et d'Art contemporain de la Ville de Liège
2009.563

26.



JAMES ENSOR Belgian, 1860-1949
Christ's Entry into Jerusalem (recto). Christ Bearing the Cross (verso)
1885
Graphite and Conté crayon on wove paper
8 7/8 x 6 1/2" (22.5 x 16.5 cm)
The J. Paul Getty Museum, Los Angeles
2009.610

27.



JAMES ENSOR Belgian, 1860-1949
Skeleton Looking at Chinoiserie
1885/1888
Oil on canvas
39 3/8 x 23 5/8" (100 x 60 cm)
Museum voor Schone Kunsten, Ghent. On long-term loan from the Koning Boudewijnstichting, Brussels
2009.562

28.



JAMES ENSOR Belgian, 1860-1949
The Lively and Radiant: The Entry of Christ into Jerusalem
1885
Black and brown crayon, with collaged paper, mounted on canvas
81 1/8 x 59 3/16" (206 x 150.3 cm)
Museum voor Schone Kunsten, Ghent
2009.589

29.



JAMES ENSOR Belgian, 1860-1949
The Rising: Christ Shown to the People
1885
Black crayon and watercolor on paper, mounted on canvas
61 x 40 3/16" (155 x 102 cm)
Museum voor Schone Kunsten, Ghent
2009.590

30.



JAMES ENSOR Belgian, 1860-1949
Calvary
1886
Pencil, crayon, and oil on paper
6 3/4 x 8 3/4" (17.2 x 22.2 cm)
Private collection, Belgium
2009.591

31.



JAMES ENSOR Belgian, 1860-1949
Children Dressing
1886
Oil on canvas
53 1/8 x 39 3/8" (136 x 100 cm)
Museum voor Schone Kunsten, Ghent. On long-term loan from the Flemish Community
2009.564

32.



JAMES ENSOR Belgian, 1860-1949
Christ Mocked. State II
1886
Etching on simili-Japan paper
Plate: 9 1/16 x 6 1/8" (23 x 15.5 cm)
Sheet: 12 9/16 x 8 7/8" (31.9 x 22.5 cm)
Collection Thomas and Lore Firman
2009.643

33.



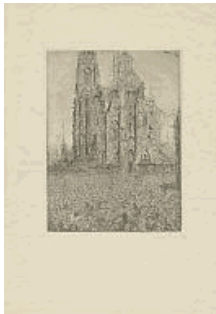
JAMES ENSOR Belgian, 1860-1949
Christ Watched Over by Angels
1886
Black chalk on panel
6 1/2 x 8 7/16" (16.5 x 21.4 cm)
Private collection
2009.595

34.



JAMES ENSOR Belgian, 1860-1949
Iston, Pouffmatus, Cracozie, and Transmouffe, Famous Persian Physicians, Examining the Stool of King Darius after the Battle of Arbela (Persian Physicians). State III
1886
Etching on simili-Japan paper
Plate: 9 5/16 x 7" (23.7 x 17.8 cm)
Sheet: 12 3/8 x 8 3/4" (31.5 x 22.2 cm)
Collection Thomas and Lore Firman
2009.653

35.



JAMES ENSOR Belgian, 1860-1949
The Cathedral. Plate I, state III
1886
Etching on Japan paper
Plate: 9 5/16 x 7" (23.6 x 17.7 cm); Sheet: 11 1/4 x 8 5/8" (28.5 x 22.7 cm)
Collection Thomas and Lore Firman
2009.639

36.



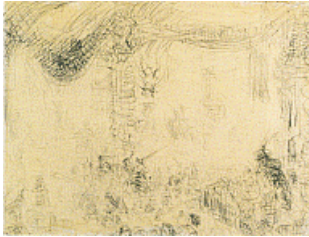
JAMES ENSOR Belgian, 1860-1949
The Devils Dzitts and Hihahox, Led by Crazon, Riding a Wild Cat, Leading Christ into Hell
1886
Pencil, Conté crayon, black chalk, brown India ink, pen, and white gouache on paper, mounted on panel
6 13/16 x 8 15/16" (17.3 x 22.7 cm)
Musées royaux des Beaux-Arts de Belgique, Brussels
2009.601

37.



JAMES ENSOR Belgian, 1860-1949
Adam and Eve Expelled from Paradise
1887
Oil on canvas
80 11/16 x 96 7/16" (205 x 245 cm)
Koninklijk Museum voor Schone Kunsten, Antwerp
2009.565

38.



JAMES ENSOR Belgian, 1860-1949
Christ Shown to the People and the Entry of Christ into Jerusalem
1887
Black chalk on paper
6 7/8 x 7 7/8" (17.5 x 20 cm)
Museum voor Schone Kunsten, Ghent
2009.611

39.



JAMES ENSOR Belgian, 1860-1949
Death Pursuing the Human Flock (Triumph of Death)
1887
Black crayon, ink, and colored pencil on paper, mounted on board
8 7/8 x 6 11/16" (22.5 x 17 cm)
Koninklijk Museum voor Schone Kunsten, Antwerp
2009.598

40.



JAMES ENSOR Belgian, 1860-1949
Fight of the Down-and-Outs
1887
Black pencil on paper, mounted on board
13 9/16 x 8 7/8" (34.5 x 22.5 cm)
Fondation Challenges, The Netherlands
2009.606

41.



JAMES ENSOR Belgian, 1860-1949
Fireworks
1887
Oil and encaustic on canvas
40 1/4 x 44 1/4" (102.2 x 112.4 cm)
Albright-Knox Art Gallery, Buffalo. George B. and Jenny R. Mathews Fund, 1970
2009.629

42.



JAMES ENSOR Belgian, 1860-1949
My Father in Death
1887
Pencil and gouache on paper
6 3/4 x 8 15/16" (17.1 x 22.7 cm)
Collection Thomas and Lore Firman
2009.664

43.



JAMES ENSOR Belgian, 1860-1949
Portrait of Ernest Rousseau. State III
1887
Drypoint on Japan paper
Plate: 9 x 6 5/8" (22.8 x 16.8 cm)
Sheet: 12 5/8 x 8 13/16" (32 x 22.4 cm)
Collection Thomas and Lore Firman
2009.658

44.



JAMES ENSOR Belgian, 1860-1949
The Pisser. Only state
1887
Etching on simili-Japan paper
Plate: 5 11/16 x 4 1/8" (14.5 x 10.5 cm); Sheet: 11 3/4 x 9 1/2" (29.8 x 24.0 cm)
Collection Thomas and Lore Firman
2009.667

45.



JAMES ENSOR Belgian, 1860-1949
Tribulations of Saint Anthony
1887
Oil on canvas
46 3/8 x 66" (117.8 x 167.6 cm)
Purchase
1642.1940

46.

JAMES ENSOR Belgian, 1860-1949
View of Mariakerke
c. 1887
Print with hand-colored additions
Private collection
2009.843

47.



JAMES ENSOR Belgian, 1860-1949
Boats Aground (The Stranded Boats). State I
1888
Etching on Chine
Plate: 7 x 9 3/8" (17.8 x 23.8 cm)
Sheet: 9 1/2 x 11 5/8" (24.1 x 29.5 cm)
Collection Thomas and Lore Firman
2009.642

48.



JAMES ENSOR Belgian, 1860-1949
Demons Tormenting Me
1888
Graphite and black chalk on wove paper
8 9/16 x 11 3/4" (21.8 x 29.8 cm)
The Art Institute of Chicago. Ada Turnbull Hertle Fund
2009.603

49.



JAMES ENSOR Belgian, 1860-1949
Devils Thrashing Angels and Archangels. Only state
1888
Etching on simili-Japan paper
Plate: 9 13/16 x 11 9/16" (25 x 29.3 cm)
Sheet: 14 3/8 x 18 13/16" (36.5 x 47.8 cm)
Collection Thomas and Lore Firman
2009.647

50.



JAMES ENSOR Belgian, 1860-1949
House on the Boulevard Anspach. State II
1888
Drypoint with hand-coloring on simili-Japan paper
Plate: 5 1/2 x 3 3/8" (14 x 8.5 cm)
Sheet: 9 13/16 x 6 5/16" (25 x 16 cm)
Collection Thomas and Lore Firman
2009.652

51.



JAMES ENSOR Belgian, 1860-1949
Lust. State II
1888
Etching heightened with gouache on Japan paper
Plate: 3 5/8 x 5 3/16" (9.2 x 13.1 cm)
Sheet: 9 5/16 x 11 9/16" (23.7 x 29.3 cm)
Collection Thomas and Lore Firman
2009.654

52.



JAMES ENSOR Belgian, 1860-1949
Masks Confronting Death
1888
Oil on canvas
32 x 39 1/2" (81.3 x 100.3 cm)
Mrs. Simon Guggenheim Fund
505.1951

53.



JAMES ENSOR Belgian, 1860-1949
My Aunt Asleep Dreaming of Monsters
c. 1888
Pencil, Conté crayon, and colored pencil on paper
8 5/8 x 11 13/16" (21.9 x 30 cm)
Musées royaux des Beaux-Arts de Belgique, Brussels. Alla Goldschmidt-Safieva
Bequest
2009.596

54.



JAMES ENSOR Belgian, 1860-1949
My Portrait in 1960. State II
1888
Etching on wove paper
Plate: 2 3/4 x 4 11/16" (7.0 x 11.9 cm); Sheet: 6.3 x 9.9" (16 x 25.1 cm)
The Art Institute of Chicago. Charles Deering Collection Fund
2009.630

55.



JAMES ENSOR Belgian, 1860-1949
Peculiar Insects. State III, proof no. 8
1888
Drypoint on laid Japan paper
Plate: 4 1/2 x 6 1/8" (11.4 x 15.4 cm); Sheet: 5 1/2 x 7 3/8" (13.8 x 18.7 cm)
Collection Thomas and Lore Firman
2009.668

56.



JAMES ENSOR Belgian, 1860-1949
Plague Above, Plague Below, Plague All Around!
 1888
 Conté crayon and colored pencil on paper
 8 7/8 x 11 13/16" (22.5 x 30 cm)
 Koninklijk Museum voor Schone Kunsten, Antwerp
 2009.597

57.



JAMES ENSOR Belgian, 1860-1949
Self-Portrait
 c. 1888
 Pencil on panel
 6 3/8 x 4 1/4" (16.3 x 10.8 cm)
 Gallery Ronny Van de Velde, Antwerp
 2009.615

58.



JAMES ENSOR Belgian, 1860-1949
Skeleton Musicians
 1888
 Black pencil and brown chalk on paper, mounted on panel
 8 1/4 x 6 5/16" (21 x 16 cm)
 Private collection
 2009.609

59.



JAMES ENSOR Belgian, 1860-1949
The Elephant's Joke. Only state
 1888
 Etching with hand-coloring on Japan paper
 Plate: 7 1/16 x 9 5/16" (18 x 23.7 cm)
 Sheet: 14 1/8 x 18 7/8" (35.8 x 47.9 cm)
 Collection Thomas and Lore Firman
 2009.648

60.



JAMES ENSOR Belgian, 1860-1949
The Fight of the Angels and the Demons
 1888
 Colored crayon on paper
 10 7/16 x 17 5/16" (26.5 x 44 cm)
 Staatsgalerie Stuttgart. Graphische Sammlung
 2009.602

61.



JAMES ENSOR Belgian, 1860-1949
The Fight of the Down-and-Outs Désir and Rissolé. State II
 1888
 Etching heightened with gouache and colored pencil on Japan paper
 Plate: 9 x 11" (22.9 x 28 cm)
 Sheet: 13 3/8 x 15" (33.9 x 38.1 cm)
 Collection Thomas and Lore Firman
 2009.649

62.



JAMES ENSOR Belgian, 1860-1949
The Flea
1888
Black crayon on paper, mounted on board
8 7/8 x 6 5/8" (22.6 x 16.8 cm)
Private collection
2009.622

63.



JAMES ENSOR Belgian, 1860-1949
The Haunted Fireplace
1888
Crayon and colored pencil on panel
9 7/16 x 6 5/16" (24 x 16 cm)
Private collection
2009.623

64.



JAMES ENSOR Belgian, 1860-1949
The Stars in the Cemetery. Only state
1888
Etching with drypoint on simili-Japan paper
Plate: 5 3/16 x 6 13/16" (13.2 x 17.3 cm)
Sheet: 9 7/16 x 12 1/16" (23.9 x 30.7 cm)
Collection Thomas and Lore Firman
2009.661

65.



JAMES ENSOR Belgian, 1860-1949
The Strike (The Slaughter of the Ostend Fisherman [August 1887])
1888
Pencil and colored pencil on paper, mounted on board
13 3/8 x 26 9/16" (34 x 67.5 cm)
Koninklijk Museum voor Schone Kunsten, Antwerp
2009.608

66.



JAMES ENSOR Belgian, 1860-1949
Belgium in the Nineteenth Century
1889
Pencil and colored pencil on paper, mounted on panel
8 9/16 x 11 11/16" (16.3 x 21.4 cm)
Bibliothèque royale de Belgique, Brussels. Cabinet des Estampes
2009.594

67.



JAMES ENSOR Belgian, 1860-1949
Doctrinaire Nourishment
1889
Etching on Japan paper
Sheet: 7 x 9 3/4" (17.8 x 24.8 cm)
2009.665

68.



JAMES ENSOR Belgian, 1860-1949
Doctrinaire Nourishment. Plate I, state II
 1889
 Etching heightened with watercolor and gouache on Japan paper
 Plate: 7 1/16 x 9 3/8" (18 x 23.8 cm); Sheet: 9 1/4 x 11 5/8 (23.5 x 29.53 cm)
 Museum voor Schone Kunsten, Ghent
 2009.624

69.



JAMES ENSOR Belgian, 1860-1949
My Skeletonized Portrait. State I, unique impression
 1889
 Etching on wove paper
 Plate: 4 9/16 x 2 15/16" (11.6 x 7.5 cm); Sheet: 11 3/8 x 9 3/8" (28.8 x 23.8 cm)
 Kunstmuseum aan zee, Ostend
 2009.616

70.



JAMES ENSOR Belgian, 1860-1949
My Skeletonized Portrait. State II
 1889
 Etching and drypoint on wove paper
 Plate: 4 9/16 x 2 15/16" (11.6 x 7.5 cm); Sheet: 11 3/8 x 9 3/8" (28.8 x 23.8 cm)
 Kunstmuseum aan zee, Ostend
 2009.617

71.



JAMES ENSOR Belgian, 1860-1949
Skeleton Drawing Fine Pranks
 c. 1889
 Black chalk, colored pencil, and gold paint on paper
 8 1/2 x 11 5/8" (21.6 x 29.6 cm)
 Musée d'Orsay, Paris. On deposit with the Département des Arts graphiques du Musée du Louvre. Gift of the artist, 1932
 2009.621

72.



JAMES ENSOR Belgian, 1860-1949
Skeletons Trying to Warm Themselves
 1889
 Oil on canvas
 29 1/2 x 23 5/8" (75 x 60 cm)
 Kimbell Art Museum, Fort Worth
 2009.566

73.



JAMES ENSOR Belgian, 1860-1949
The Astonishment of the Mask Wouse
 1889
 Oil on canvas
 42 15/16 x 51 9/16" (109 x 131 cm)
 Koninklijk Museum voor Schone Kunsten, Antwerp
 2009.631

74.



JAMES ENSOR Belgian, 1860-1949
The Pool of the Poplars. Only state
1889
Etching on Japan paper
Plate: 6 1/8 x 9 3/16" (15.5 x 23.3 cm)
Sheet: 7 x 10 1/8" (17.8 x 25.7 cm)
Collection Thomas and Lore Firman
2009.657

75.



JAMES ENSOR Belgian, 1860-1949
The Thunderstorm. State II
1889
Etching on simili-Japan paper
Plate: 2 15/16 x 4 9/16" (7.5 x 11.6 cm)
Sheet: 5 1/4 x 7 13/16" (13.3 x 19.9 cm)
Collection Thomas and Lore Firman
2009.662

76.



JAMES ENSOR Belgian, 1860-1949
Village Fair at the Windmill. Only state
1889
Etching on satin
Plate: 5 5/16 x 6 7/8" (13.5 x 17.4 cm)
Sheet: 6 15/16 x 8 3/8" (17.6 x 21.3 cm)
Collection Thomas and Lore Firman
2009.663

77.



JAMES ENSOR Belgian, 1860-1949
Ensor and Leman Discussing Painting
1890
Oil on panel
4 3/4 x 6 5/16" (12 x 16 cm)
Private collection
2009.568

78.



JAMES ENSOR Belgian, 1860-1949
Self-Portrait at the Easel
1890
Oil on canvas
23 7/16 x 16 1/8" (59.5 x 41 cm)
Koninklijk Museum voor Schone Kunsten, Antwerp
2009.619

79.



JAMES ENSOR Belgian, 1860-1949
Series of Small Masks
1890(?)
Conté crayon on paper
8 13/16 x 6 7/8" (22.4 x 17.5 cm)
Koninklijk Museum voor Schone Kunsten, Antwerp
2009.593

80.



JAMES ENSOR Belgian, 1860-1949
Skeleton in the Mirror
1890
Black crayon on paper
11 13/16 x 8 11/16" (30 x 22 cm)
Private collection
2009.626

81.



JAMES ENSOR Belgian, 1860-1949
Surly Countenance
1890
Oil on panel
9 5/8 x 7 1/2" (24.5 x 19 cm)
Private collection
2009.569

82.



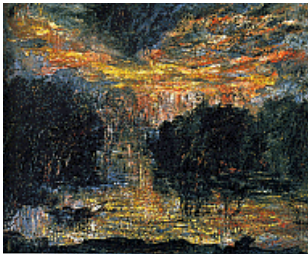
JAMES ENSOR Belgian, 1860-1949
The Assassination
1890
Oil on canvas
23 13/16 x 30 3/8" (60.5 x 77.2 cm)
Columbus Museum of Art, Ohio: Gift of Howard D. and Babette L. Sirak, the Donors to the Campaign for Enduring Excellence, and the Derby Fund
2009.627

83.



JAMES ENSOR Belgian, 1860-1949
The Baths at Ostend
1890
Black crayon, colored pencil, and oil on panel
14 3/4 x 17 15/16" (37.5 x 45.5 cm)
Fondation Challenges, The Netherlands
2009.592

84.



JAMES ENSOR Belgian, 1860-1949
The Domain of Arnheim
1890
Oil on canvas
31 1/2 x 39 3/8" (80 x 100 cm)
Private collection. On long-term loan to Musées royaux des Beaux-Arts de Belgique, Brussels
2009.570

85.



JAMES ENSOR Belgian, 1860-1949
The Intrigue
1890
Oil on canvas
35 7/16 x 59 1/16" (90 x 150 cm)
Koninklijk Museum voor Schone Kunsten, Antwerp
2009.567



JAMES ENSOR Belgian, 1860-1949
The Tower of Lissewege
1890
Oil on canvas
23 1/4 x 29 1/8" (59 x 74 cm)
Fondation Socindec
2009.638



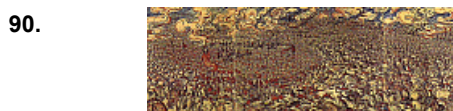
JAMES ENSOR Belgian, 1860-1949
White and Red Clowns Evolving
1890
Pencil, ink and gouache on paper
9 1/2 x 11 11/16" (24.1 x 29.7 cm)
Musées royaux des Beaux-Arts de Belgique, Brussels. Alla Goldschmidt-Safieva Bequest
2009.612



JAMES ENSOR Belgian, 1860-1949
Christ Calming the Storm
1891
Oil on canvas
31 1/2 x 39 3/8" (80 x 100 cm)
Kunstmuseum aan zee, Ostend
2009.575



JAMES ENSOR Belgian, 1860-1949
Skeletons Fighting Over a Pickled Herring
1891
Oil on panel
6 5/16 x 8 7/16" (16 x 21.5 cm)
Musées royaux des Beaux-Arts de Belgique, Brussels
2009.572



JAMES ENSOR Belgian, 1860-1949
The Cuirassiers at Waterloo
1891
India ink, crayon, colored pencil, and pastel on three sheets of paper, mounted on board
8 7/8 x 24 5/8" (22.5 x 62.5 cm)
Koninklijk Museum voor Schone Kunsten, Antwerp
2009.620

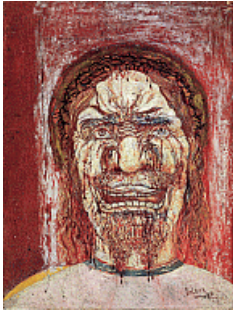


JAMES ENSOR Belgian, 1860-1949
The Frightful Musicians
1891
Oil on panel
6 5/16 x 8 1/4" (16 x 21 cm)
Courtesy Patrick Derom Gallery, Brussels
2009.574



JAMES ENSOR Belgian, 1860-1949
The Grotesque Singers
1891
Oil on panel
6 5/16 x 8 11/16" (16 x 22 cm)
Private collection
2009.571

93.



JAMES ENSOR Belgian, 1860-1949

The Man of Sorrows

1891

Oil on panel

8 5/8 x 6 5/16" (21.9 x 16 cm)

Koninklijk Museum voor Schone Kunsten, Antwerp

2009.580

94.



JAMES ENSOR Belgian, 1860-1949

The Wise Judges

1891

Oil on panel

14 15/16 x 18 1/8" (38 x 46 cm)

Private collection

2009.573

95.



JAMES ENSOR Belgian, 1860-1949

Monsieur and Madame Rousseau Speaking with Sophie Yoteko

1892

Oil on panel

4 3/4 x 6 5/16" (12 x 16 cm)

Private collection, Belgium

2009.625

96.



JAMES ENSOR Belgian, 1860-1949

The Bad Doctors

1892

Oil on panel

19 11/16 x 24" (50 x 61 cm)

Université libre de Bruxelles

2009.578

97.



JAMES ENSOR Belgian, 1860-1949

The Despair of Pierrot

1892

Oil on canvas

56 7/8 x 76 9/16" (144.5 x 194.5 cm)

Courtesy Christie's, Inc.

2009.576

98.



JAMES ENSOR Belgian, 1860-1949

The Melancholy Fishwives

1892

Oil on canvas

39 3/8 x 31 1/2" (100 x 80 cm)

Fondation Socindec. Courtesy Fondation Pierre Gianadda, Martigny

2009.634

99.



JAMES ENSOR Belgian, 1860-1949
The Skate
1892
Oil on canvas
31 1/2 x 39 3/8" (80 x 100 cm)
Musées royaux des Beaux-Arts de Belgique, Brussels
2009.577

100.



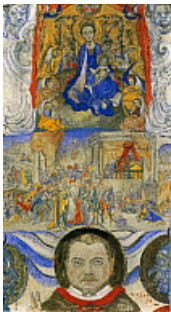
JAMES ENSOR Belgian, 1860-1949
The Strange Masks
1892
Oil on canvas
39 3/8 x 31 1/2" (100 x 80 cm)
Musées royaux des Beaux-Arts de Belgique, Brussels
2009.581

101.



JAMES ENSOR Belgian, 1860-1949
The Virgin of Consolation
1892
Oil on panel
15 3/4 x 14 15/16" (40 x 38 cm)
Private collection
2009.579

102.



JAMES ENSOR Belgian, 1860-1949
Icon (Portrait of Eugène Demolder)
1893
Oil, pencil, and gouache on panel
14 3/16 x 8 1/4" (36 x 21 cm)
Groeningemuseum, Bruges
2009.583

103.



JAMES ENSOR Belgian, 1860-1949
Pierrot and Skeleton in a Yellow Robe
1893
Oil on panel
14 15/16 x 18 7/8" (38 x 48 cm)
Museum voor Schone Kunsten, Ghent. On long-term loan from the Flemish Community
2009.632

104.



JAMES ENSOR Belgian, 1860-1949
The Small Boats. Only state, proof no. 4
1894
Etching on Chine
Plate: 3 1/4 x 4 9/16" (8.3 x 11.6 cm)
Sheet: 5 1/2 x 7 5/16" (13.9 x 18.5 cm)
Collection Thomas and Lore Firman
2009.660

105.



JAMES ENSOR Belgian, 1860-1949
Battle of the Golden Spurs. Only state
1895
Etching with hand-coloring on simili-Japan paper
Plate: 9 1/2 x 11" (24.1 x 27.9 cm)
Sheet: 11 5/16 x 14 11/16" (28.8 x 37.3 cm)
Collection Thomas and Lore Firman
2009.641

106.



JAMES ENSOR Belgian, 1860-1949
Skeletons Trying to Warm Themselves. State I
1895
Etching heightened with ink, colored chalk, and wash on wove paper, used as proff envelope
Plate: 5 1/4 x 3 13/16" (13.3 x 9.7 cm)
Sheet: 5 11/16 x 4 1/2" (14.5 x 11.4 cm)
Collection Thomas and Lore Firman
2009.659

107.



JAMES ENSOR Belgian, 1860-1949
The Bad Doctors. Only state
1895
Etching heightened with chalk and watercolor on simili-Japan paper
Plate: 7 x 10" (17.2 x 24.6 cm)
Sheet: 13 11/16 x 17 5/16" (34.8 x 43.9 cm)
Collection Thomas and Lore Firman
2009.640

108.



JAMES ENSOR Belgian, 1860-1949
The Devils Dzitts and Hihahox, Led by Crazon, Riding a Wild Cat, Leading Christ into Hell. Only state, proof no. 6
1895
Etching on Japan paper
Plate: 5 1/2 x 7" (14 x 17.8 cm)
Sheet: 6 11/16 x 7 7/8" (17 x 20 cm)
Collection Thomas and Lore Firman
2009.646

109.



JAMES ENSOR Belgian, 1860-1949
The Skeleton Painter
1895 or 1896(?)
Oil on panel
14 13/16 x 18 1/8" (37.7 x 46 cm)
Koninklijk Museum voor Schone Kunsten, Antwerp
2009.587

110.



JAMES ENSOR Belgian, 1860-1949
Death Pursuing the Human Flock. State II
1896
Etching on laid paper
plate: 9 1/2 x 7 1/8" (23.5 x 17.5 cm), sheet: 19 x 13 1/8" (48.3 x 33.3 cm)
Collection Thomas and Lore Firman
2009.645

111.



JAMES ENSOR Belgian, 1860-1949
The Dangerous Cooks
1896
Pencil, gouache, and oil on board
7 7/8 x 9 13/16" (20 x 25 cm)
Private collection
2009.633

112.



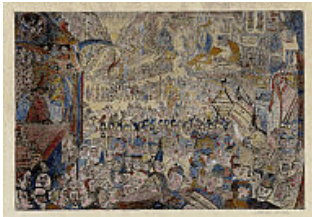
JAMES ENSOR Belgian, 1860-1949
Hop-Frog's Revenge. State II
1898
Etching with hand-coloring on Japan paper
Plate: 13 3/4 x 9 1/2" (35 x 24.2 cm)
Sheet: 20 13/16 x 15 13/16" (52.8 x 40.1 cm)
Collection Thomas and Lore Firman
2009.651

113.



JAMES ENSOR Belgian, 1860-1949
Poster for La Plume
(1898)
Lithograph with watercolor additions
composition: 22 1/4 x 14 11/16" (56.5 x 37.3 cm); sheet: 25 9/16 x 17 11/16" (64.9 x 44.9 cm)
Gift of Ludwig Charell
155.1956

114.



JAMES ENSOR Belgian, 1860-1949
The Entry of Christ into Brussels. State III
1898
Etching heightened with watercolor on Arches laid paper
Plate: 9 3/4 x 14" (24.8 x 35.5 cm); Sheet: 13 7/8 x 17 5/6" (35 x 45.5 cm)
Collection Thomas and Lore Firman
2009.666

115.



JAMES ENSOR Belgian, 1860-1949
Self-Portrait with Masks
1899
Oil on canvas
47 1/4 x 31 1/2" (120 x 80 cm)
Menard Art Museum, Komaki City
2009.584

116.



JAMES ENSOR Belgian, 1860-1949
Skeletons in the Studio
1900
Oil on canvas
43 11/16 x 31 5/16" (111 x 79.5 cm)
National Gallery of Canada, Ottawa. Purchased 1981
2009.585

117.



JAMES ENSOR Belgian, 1860-1949
View of Mariakerke
 1901
 Oil on canvas
 21 1/4 x 26 3/8" (54 x 67 cm)
 Kunstmuseum aan zee, Ostend
 2009.614

118.



JAMES ENSOR Belgian, 1860-1949
At the Conservatory
 1902
 Oil on canvas, mounted on panel
 22 1/16 x 28 1/8" (56 x 71.5 cm)
 Musée d'Orsay, Paris
 2009.636

119.



JAMES ENSOR Belgian, 1860-1949
Perplexed Masks. Only state
 1904
 Etching on laid paper
 Plate: 2 15/16 x 4 1/2" (7.4 x 11.4 cm)
 Sheet: 8 7/8 x 11 13/16" (22.5 x 30 cm)
 Collection Thomas and Lore Firman
 2009.655

120.



JAMES ENSOR Belgian, 1860-1949
Plague Above, Plague Below, Plague All Around! Only state
 1904
 Etching on Japan paper
 Plate: 33 1/16 x 5 1/4" (84 x 13.4 cm)
 Sheet: 10 5/16 x 15 7/16" (26.2 x 39.2 cm)
 Collection Thomas and Lore Firman
 2009.656

121.



JAMES ENSOR Belgian, 1860-1949
The Deadly Sins Dominated by Death. Only state
 1904
 Etching with hand-coloring on Japan paper
 plate: 3 1/2 x 5 1/4" (8.4 x 13.4 cm), sheet: 8 7/8 x 11 1/8" (22.5 x 28.3 cm)
 Collection Thomas and Lore Firman
 2009.644

122.

JAMES ENSOR Belgian, 1860-1949
Décor from La Gamme d'Amour
 1929. (Play produced and reproduced drawings executed 1907).
 One from an illustrated book with one four-color relief halftone reproduction after drawing of stage set and 21 photolithographic reproductions after drawings of costume designs
 page 9 7/8 x 12 7/8" (25 x 32.7 cm)
 The Louis E. Stern Collection
 825.1964.A1

123.

JAMES ENSOR Belgian, 1860-1949
Fifrelin from La Gamme d'Amour
1929. (Play produced and reproduced drawings executed 1907).
One photolithographic reproduction from an illustrated book with one four-color relief halftone reproduction after drawing of stage set and 21 photolithographic reproductions after drawings of costume designs
page 9 7/8 x 12 7/8" (25 x 32.7 cm)
The Louis E. Stern Collection
825.1964.A6

124.

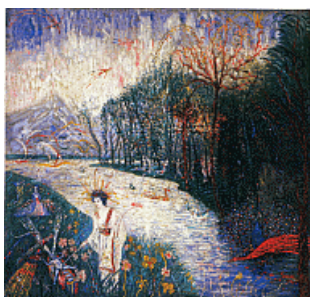
JAMES ENSOR Belgian, 1860-1949
Miamia from La Gamme d'Amour
1929. (Play produced and reproduced drawings executed 1907).
One photolithographic reproduction from an illustrated book with one four-color relief halftone reproduction after drawing of stage set and 21 photolithographic reproductions after drawings of costume designs
page 9 7/8 x 12 7/8" (25 x 32.7 cm)
The Louis E. Stern Collection
825.1964.A4

125.



JAMES ENSOR Belgian, 1860-1949
The Banquet of the Starved
1915
Oil on canvas
45 1/2 x 57 1/4" (115.6 x 145.4 cm)
The Metropolitan Museum of Art, New York. Bequest of Miss Adelaide Milton de Groot, 1967
2009.635

126.



JAMES ENSOR Belgian, 1860-1949
Moses and the Birds (The Finding of Moses)
1924
Oil on canvas
47 x 50 1/2" (119.4 x 128.3 cm)
University of California, Berkeley Art Museum and Pacific Film Archive. Gift of Joachim Jean Aberbach.
2009.588

127.



JAMES ENSOR Belgian, 1860-1949
Poster for Carnival at Ostende
(1931)
Lithograph
composition: 16 5/16 x 11 7/16" (41.5 x 29.1cm); sheet: 18 5/8 x 12 15/16" (47.3 x 32.8cm)
Mr. and Mrs. E. Powis Jones Fund
349.1962

128.



JAMES ENSOR Belgian, 1860-1949
Self-Portrait with Masks
1937
Oil on canvas
12 1/4 x 9 5/8" (31.1 x 24.4 cm)
Philadelphia Museum of Art. The Louis E. Stern Collection, 1963
2009.628