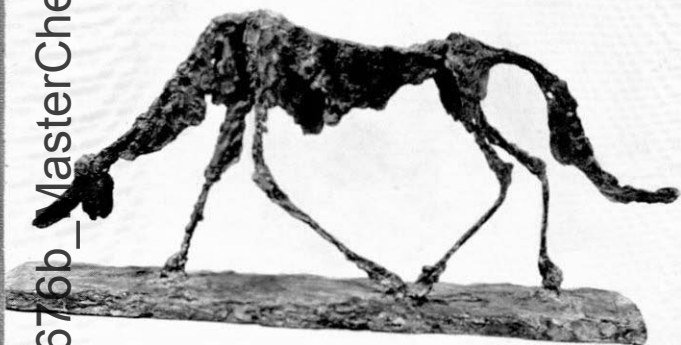


NoMAExh_0676b_MasterChecklist



**birds and beasts
from the museum of modern art**

exhibition for the benefit of the Museum's
th Anniversary Drive

Country Art Gallery, Belmont Avenue, Westbury, Long Island



catalogue of the exhibition

- 41.53 Bacon: Dog. 1952. Oil
- 32.41 Calder: Horse. 1928. Walnut
- 43 Calder: Cow. 1929. Wire
- 44 Calder: Sow. 1928. Wire
- 35.50 Calder: Whale. 1937. Steel
- 21.44 Callery: Horse. 1942. Bronze
- 59 César: Galactic Insect. 1956. Iron
- 55 Cremonini: Enamored Tomcat. 1952. Oil
- 48 van Doesburg: Composition (The Cow). 1916. Gouache
- 225.48 van Doesburg: Composition (The Cow). 1916-17. Oil
- 256 Dubuffet: The Cow with the Subtile Nose. 1954. Oil
- 38 Flannagan: Triumph of the Egg, I. 1937. Granite
- 58 Giacometti: Dog. 1956. Bronze (cover, top)
- 42 Graves: Bird Singing in the Moonlight. 1938. Gouache
- 72 Graves: Snake and Moon. 1938-39. Gouache
- 136.71 Hare: Crab. 1951. Bronze
- 44 Hirshfield: Tiger. 1940. Oil
- 42 Lipchitz: The Rape of Europa, II. 1938. Bronze
- 41 Mariano: The Cock. 1941. Oil
- 53 Minguzzi: Dog among Reeds. 1951. Bronze
- 31 Miró: Mongoose. 1938. Wool rug
- 47 Nadelman: Standing Bull. 1915. Bronze
- 47 Nadelman: Wounded Bull. 1915. Bronze
- 53 Nagwaraba: Two Snakes. 1955. Clay on bark
- 271.35 Nakian: Young Calf. 1929. Marble
- 196.54 Picasso: Baboon and Young. 1951. Bronze
- 412.35 Roy: Danger on the Stairs. 1927-28. Oil
- 142.58 Shemi: Bird. 1955. Iron
- 165.42 Tamayo: Animals. 1941. Oil
- 1.55 Walters: Baby Hippo. 1936. Ceramic (cover, bottom)
- 29.57 Zajac: Easter Goat. 1957. Bronze
- 331.55 *Jouglades-Goyrie. Wolf's Head, bronze*

The Museum of Modern Art is in the midst of a 30th Anniversary Drive for 25 million dollars for additional building, endowment and program funds.

The drive is necessary because the Museum's Collections, activities and demands for its services have all grown phenomenally; its physical plant and endowment have failed to keep pace with this growth.

The wide base of the Museum's support has always been a source of great strength as well as of pride. Hundreds of thousands of individuals contribute almost three-fourths of the Museum's total annual income. Their enthusiastic response to what the Museum has to offer has made it the great institution it is today. Your contribution through this benefit exhibition will help it become a still greater institution tomorrow.

Country Art Gallery December 3 - January 8

Saturday, Sunday, Monday 10 a.m.-5 p.m.

Tuesday through Friday 1-5 p.m.

Closed December 25, 26 and January 1, 2

Admission 1.00 Students .50

for the benefit of the 30th Anniversary Drive