

**RICO LEBRUN**

**PAINTINGS AND DRAWINGS OF**

**THE CRUCIFIXION**

**JANUARY 27 to FEBRUARY 28, 1951**

**M. H. DE YOUNG MEMORIAL MUSEUM • GOLDEN GATE PARK**

**SAN FRANCISCO**

## CORRIGENDA

- Page 8 Last line change "unanimously" to read  
"anonymously."
- Page 12 54a. Woman of the Crucifixion  
Change "casein, masonite 64 x 48" to read  
"Duco on Upson board 96 x 48"
- Item 31 change "30 x 70" to read "17 x 30"
- Page 16 After 54 insert  
54a. Woman of the Crucifixion 96 x 48  
Duco on Upson board
- Page 19 Item 91 change "purple" to read "casein on board"
- Page 26 After item 172 insert  
172a. Massacre of the Innocents 30 x 40  
ink wash
- Insert "Drawings" after item 173
- Page 28 Item 184 change "ink wash, tan paper 25 x 19"  
to read "black conte on white paper 38 x 19"
- Item 187 add "30 x 40"
- Page 30 After 205 insert  
205a. Shroud on the Cross 36 x 120  
Duco on Upson board
- Before item 206 change "Paintings" to read  
"Drawing"
- Page 33 Line 7 change "Los Angeles, Calif.," to read  
"Dayton, Ohio"

This catalog lists all of the works in the Crucifixion cycle. During the installation of the exhibition, the artist decided that in the interest of effective presentation some items were not to be included.

✓ SHOWN IN L.A. EXHIBIT

## SCENES OF THE CRUCIFIXION

### PAINTINGS

- |  |           |
|--|-----------|
| 1. The Crucifixion<br><i>Triptych, Duco on Upson board</i> | 192 x 312 |
| 2. Descent from the Cross<br><i>Duco on Upson board</i>    | 96 x 120  |

### DRAWINGS

- |   |          |
|---|----------|
| 3. Scene of the Crucifixion<br><i>Ink wash</i>                        | 25 x 19  |
| 4. Scene of the Crucifixion<br><i>Ink wash</i>                        | 25 x 19  |
| 5. Scene of the Crucifixion<br><i>Ink wash</i>                        | 19 x 25  |
| 6. Scene of the Crucifixion<br><i>Ink wash</i>                        | 19 x 25  |
| 7. Scene of the Crucifixion<br><i>Ink wash</i>                        | 19 x 25  |
| 8. Scene of the Crucifixion<br><i>Ink wash</i>                        | 19 x 25  |
| 9. Scene of the Crucifixion<br><i>Ink wash</i>                        | 19 x 25  |
| 10. Scene of the Crucifixion<br><i>Ink wash</i>                       | 19 x 25  |
| 11. Scene of the Crucifixion<br><i>Ink wash</i>                       | 12½ x 19 |
| 12. Scene of the Crucifixion<br><i>Ink wash</i>                       | 13 x 24½ |
| 13. Scene of the Crucifixion<br><i>Ink wash</i>                       | 12½ x 19 |
| 14. Scene of the Crucifixion<br><i>Ink wash on illustration board</i> | 8½ x 12½ |
| 15. Scene of the Crucifixion<br><i>Pen and ink and wash</i>           | 30 x 31  |

**All works in this catalog are for sale. Inquiries regarding purchases should be directed to the art division office or to the curator of contemporary art.**



54. Woman of the Crucifixion  
*Casein, masonite*

64 x 48

- ✓ 17. Scene of the Crucifixion  
*Photostat*

60 x 40

18. Scene of the Crucifixion  
*Photostat*

60 x 40

- ✓ 19. Scene of the Crucifixion  
*Ink wash and pen and ink*  
Lent by Mr. Leslie Johnson

20. Scene of the Crucifixion  
*Ink wash and pen and ink*

7½ x 12

21. Scene of the Crucifixion  
*Ink wash and pen and ink on illustration board*

6 x 17¼

22. Scene of the Crucifixion  
*Ink wash and pen and ink on illustration board*

10 x 12

23. Scene of the Crucifixion  
*Ink wash and casein on illustration board*

12½ x 14½

24. Scene of the Crucifixion  
*Ink wash and pen and ink*

17¼ x 21

- ✓ 25. Scene of the Crucifixion  
*Ink wash and casein on illustration board*

11 x 23

26. Scene of the Crucifixion 19 x 26  
*Ink wash and casein on illustration board*

• 27. Scene of the Crucifixion 14½ x 27½  
*Ink wash and pen and ink on illustration board*

## CARPENTERS

### PAINTING

28. Carpenter on the Cross 48 x 96  
*Casein on brown paper*

### DRAWINGS

29. Carpenter on the Cross 30 x 22  
*Ink wash and pen and ink*

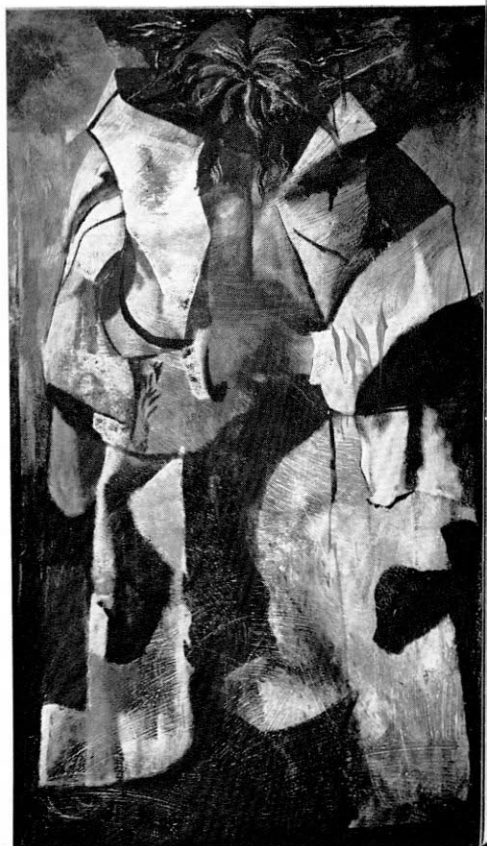
30. Carpenter on the Cross 17½ x 25  
*Ink wash, pen and ink on illustration board*

31. Carpenter on the Cross 30 x 70  
*Ink wash, pen and ink on illustration board*

32. Carpenter on the Cross 19 x 25  
*Charcoal and pen and ink*

55. Shell of Mary  
*Casein*

70 x 40



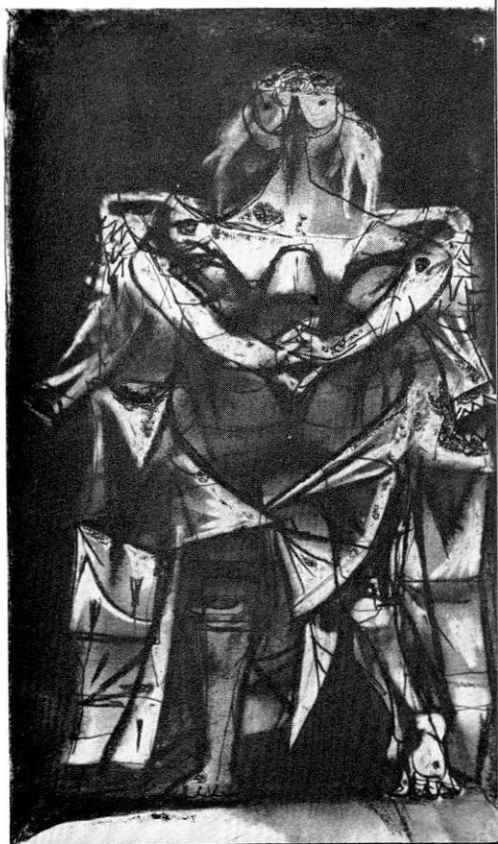


65. Woman of the Crucifixion  $11\frac{1}{2} \times 6\frac{3}{4}$   
 [Profile]  
 Pen and ink, black and brown conté

- |   |         |
|---|---------|
| 32. Carpenter on the Cross<br><i>Brown conté and pen and ink</i>  | 25 x 19 |
| 34. Carpenter on the Cross<br><i>Black conté and pen and ink</i>  | 20 x 26 |
| 35. Carpenter on the Cross<br><i>Ink wash and pen and ink</i>     | 12 x 20 |
| 36. Carpenter on the Cross<br><i>Ink wash and pen and ink</i>     | 25 x 19 |
| 37. Carpenter on the Cross<br><i>Ink wash and pen and ink</i>     | 25 x 19 |
| 38. Carpenter on the Cross<br><i>Ink wash and pen and ink</i>     | 19 x 25 |
| 39. Carpenter on the Cross (INRI)<br><i>Light blue ink, brush</i> | 24 x 19 |
| 40. Hands of the Cross (INRI)<br><i>Light blue ink, brush</i>     | 24 x 19 |
| 41. Carpenter on the Cross<br><i>Light blue ink, brush</i>        | 24 x 19 |

- |   |          |
|---|----------|
| 42. Carpenter on the Cross<br><i>Light blue ink, brush</i>    | 24 x 19  |
| 43. Carpenter on the Cross<br><i>Light blue ink, brush</i>    | 24 x 19  |
| 44. Carpenter on the Cross<br><i>Light blue ink, brush</i>    | 24 x 19  |
| 45. Carpenter on the Cross<br><i>Light blue ink, brush</i>    | 19 x 24  |
| 46. Carpenter on the Cross<br><i>Ink wash and pen and ink</i> | 30 x 40  |
| 47. Carpenter on the Cross<br><i>Charcoal</i>                 | 30 x 40  |
| 48. Carpenter on the Cross<br><i>Charcoal</i>                 | 60 x 40  |
| 49. Carpenter on the Cross<br><i>Charcoal</i>                 | 60 x 40  |
| 50. Carpenter on the Cross<br><i>Charcoal on brown paper</i>  | 96 x 48  |
| 51. Carpenter on the Cross<br><i>Ink wash and pen and ink</i> | 19 x 24  |
| 52. Carpenter on the Cross<br><i>Ink wash</i>                 | 15 x 27½ |

66. Woman of the Crucifixion 12 x 7¼  
[Front]  
*Pen and ink, black-and-brown conté*



# WOMEN OF THE CRUCIFIXION

## PAINTINGS

- |  |                                     |
|--|-------------------------------------|
| 53. Woman of the Crucifixion<br><i>Duco on Upson board</i>           | 48 x 35                             |
| • <del>54.</del> Woman of the Crucifixion<br><i>Casein, masonite</i> | 64 x 48                             |
| • <del>55.</del> Shell of Mary<br><i>Casein</i>                      | 70 x 40                             |
| <del>56.</del> Woman of the Crucifixion<br><i>Casein and oil</i>     | 71 $\frac{7}{8}$ x 41 $\frac{1}{4}$ |

*54-a Woman of the Crucifixion*

## DRAWINGS

- |  |                       |
|--|-----------------------|
| 57. Woman of the Crucifixion<br><i>Brown conté and ink line</i>    | 18 x 10               |
| 58. Woman of the Crucifixion<br><i>Black conté and pen and ink</i> | 14 x 9 $\frac{1}{2}$  |
| • <del>59.</del> Woman in the Rain<br><i>Ink wash and line</i>     | 30 x 24 $\frac{1}{2}$ |
| 60. Woman in the Rain<br><i>Brown conté and pen and ink</i>        | 40 x 30               |
| • <del>61.</del> Woman of the Crucifixion<br><i>Charcoal</i>       | 40 x 30               |
| 62. Woman of the Crucifixion<br><i>Photostat</i>                   | 30 x 19               |
| 63. Woman of the Crucifixion<br><i>Photostat</i>                   | 30 x 18               |
| 89. Head of Screaming Soldier<br><i>Casein</i>                     | 20 x 48               |







Woman of the Crucifixion  
24 x 19  
*Brown conté and ink line*  
Lent by Mr. Reginald Johnson

- |  |          |
|--|----------|
| 64. Woman of the Crucifixion<br>[Lace headdress, clasped hands]<br><i>Pen and ink wash</i> | 25 x 19  |
| • 65. Woman of the Crucifixion<br>[Profile]<br><i>Pen and ink, black and brown conté</i>   | 11½ x 6¾ |
| • 66. Woman of the Crucifixion<br>[Front]<br><i>Pen and ink, black and brown conté</i>     | 12 x 7¼  |
| 67. Woman of the Crucifixion<br>[Raised arms]<br><i>Brown conté, ink wash</i>              | 12 x 6   |
| 68. Woman of the Crucifixion<br>[Crying]<br><i>Pen and ink</i>                             | 20 x 13  |
| 69. Woman of the Crucifixion<br><i>Pen and ink on tracing paper</i>                        | 10½ x 5½ |
| • 70. War Memorial<br>[Woman's figure with writing]<br><i>Pen and ink wash</i>             | 24 x 19  |

71. Two Women of the Crucifixion <i>Ink line</i>	30 x 40
72. Two Women of the Crucifixion <i>Pen and ink and black conté</i>	15 x 8
73. Woman of the Crucifixion <i>Ink wash</i> Lent by Mr. and Mrs. Vincent Price	29 x 20
• 74. Woman of the Crucifixion <i>Brown conté and ink line</i> Lent by Mr. Reginald Johnson	24 x 19
75. Woman of the Crucifixion Lent by Mr. Ross Devean	40 x 30
76. Study for back of woman's figure <i>Black conté and ink line</i>	24 x 19
77. Woman of the Crucifixion <i>Charcoal black conté</i>	30 x 40
78. Woman of the Crucifixion <i>Conté</i> Lent by Mr. Ross Devean	30 x 20

## SOLDIERS AND MOB

### PAINTINGS

79. Armored Soldier <i>Duco on Upson board</i>	60 x 40
80. Waking Soldier <i>Casein on canvas</i>	36 x 60
81. Two Sleeping Soldiers <i>Duco</i>	61 x 96
82. Sleeping Soldiers in the Moonlight <i>Duco on Upson board</i>	30 x 50
83. Study for Sleeping Soldier <i>Duco</i>	60 x 40
84. Study for Sleeping Soldier <i>Duco</i>	48 x 36
85. Soldiers under the Cross <i>Duco on Upson board</i>	84 x 120
86. Flares and Signs <i>Duco</i>	48 x 96



119. Soldiers with Flares  
*Ink wash canvas*

38 x 51

~~87.~~ Mob with Flares  
*Duco on Upson board*

19½ x 47

~~88.~~ Waking Soldier  
*Casein, oil on canvas*

46½ x 58

• ~~89.~~ Head of Screaming Soldier  
*Casein*

20 x 48

#### DRAWINGS

90. Two Soldiers with Flares  
*Ink wash*

22 x 30

~~91.~~ Mob with Flares  
*Purple*

40 x 76

92. Soldier with Flares  
*Pen and ink, ink wash on illustration board*

16¼ x 8½

93. Standing Soldier <i>Pen and ink on illustration board</i>	15 x 9½
94. Soldier with Flares <i>Pen and ink, ink wash on illustration board</i>	26½ x 30
95. Soldier with Flares <i>Ink wash on illustration board</i>	17½ x 40
96. Study of Armor <i>Duco</i>	26 x 40
97. Soldier with Flares <i>Ink wash on illustration board</i>	40 x 13½
98. Soldier with Flares <i>Ink wash on illustration board</i>	40 x 13½
99. Soldier with Flares <i>Ink wash and pen and ink</i>	30 x 40
100. Soldier with Flares <i>Charcoal</i>	40 x 30
101. Waking Soldier <i>Ink wash, charcoal</i>	30 x 40
102. Soldier with Flares <i>Ink wash</i>	30 x 40
103. Waking Soldier <i>Ink wash</i>	30 x 40
104. Soldier with Flares <i>Ink wash</i>	30 x 40
105. Sleeping Soldier <i>Pen and ink, ink wash on illustration board</i>	60 x 40
106. Waking Soldier <i>Brown conté, charcoal on canvas</i>	40 x 70
107. Witness of the Resurrection <i>Brown-and-black conté, pen and ink</i>	19 x 24
108. Kneeling Soldier <i>Pen and ink, ink wash, yellow paper</i>	25 x 19
109. Mocking Soldier <i>Pen and ink, tan paper</i>	22 x 17
110. Mocking Soldier <i>Pen and ink, tan paper</i>	22 x 17

111. Waking Soldier <i>Pen and ink on tracing paper</i>	3½ x 7
112. Sleeping Soldier <i>Pen and ink, brown conté</i>	25 x 19
113. Waking Soldier <i>Ink wash, pen and ink</i>	7¼ x 15¾
114. Soldier with Flares <i>Ink wash and pen and ink</i>	10 x 12½
115. Soldier with Flares <i>Ink wash and pen and ink</i>	25 x 19
116. Soldier with Flare <i>Ink wash and pen and ink</i>	13 x 8
117. Soldier with Flares <i>Ink wash and pen and ink</i>	25 x 19
<del>118.</del> Waking Soldier <i>Black-and-white drawing</i>	40 x 70
• <del>119.</del> Soldiers with Flares <i>Ink wash on canvas</i>	38 x 51
<del>120.</del> Soldiers with Flares <i>Ink wash on board</i>	41 x 78
<del>121.</del> Soldiers with Flares <i>Duco, wash</i>	32 x 96
<del>122.</del> Sleeping Soldier <i>Ink wash on canvas</i>	42 x 50
<del>123.</del> Waking Soldier <i>Ink wash</i>	40 x 60
<del>124.</del> Soldiers with Flares <i>Ink wash</i>	61 x 48
125. Soldier with Lantern <i>Pen and ink, charcoal</i>	13 x 8
126. Waking Soldier <i>Brown conté, pen and ink</i>	30 x 40
<del>127.</del> Mocking Soldier <i>Ink wash</i> Lent by Mr. and Mrs. Vincent Price	38 x 19
128. Women and Flares <i>Black conté</i>	10 x 12½

191. Caterpillar

*Duco*

63½ x 122

129. Waking Soldier

*Black conté*

12 x 16

130. Soldiers with Flares

*Ink wash on illustration board*

20 x 30

131. Soldiers with Flares

*Ink wash and pen and ink*

12 x 19

132. Soldiers with Flares

*Ink wash on illustration board*

11 x 30

133. Soldiers with Flares

*Ink wash on illustration board*

10½ x 40

134. Soldiers with Flares

*Ink wash, casein*

19½ x 40

135. Waking Soldier

*Ink wash, casein on illustration board*

20 x 30

136. Waking Soldier

*Black conté*

11 x 13

137. Soldiers with Flares

*Ink wash, casein*

9 x 13

138. Mocking Soldier

*Ink wash and pen and ink*

25 x 15

139. Waking Soldier <i>Ink wash on illustration board</i>	14½ x 27
140. Soldiers with Flares <i>Ink wash</i>	12½ x 30
141. Sleeping Soldier <i>Charcoal</i>	60 x 40
142. Soldier with Lantern <i>Brown conté, pen and ink</i> Lent by Master David Hovey	10½ x 7¼
143. Sleeping Soldiers <i>Ink wash</i>	40 x 60
143a. Soldier with Flares <i>Photostat</i>	48 x 87
143b. Soldier with Flares <i>Photostat</i>	48 x 92
144. Sleeping Soldier <i>Brown conté, pen and ink</i>	23½ x 17½

## FIGURES ON THE CROSS

### PAINTINGS

141. Man on the Cross with Lantern <i>Duco on Upson board</i>	36 x 72
145. Figures at the Cross <i>Casein</i>	120 x 48
146. Figures on Cross with Lantern	96 x 48

### DRAWINGS

147. Figures at the Cross <i>Ink wash and pen and ink</i>	15¼ x 27½
148. Two Figures with Lantern on Cross <i>Pen and ink, black conté</i>	26 x 20
149. Figures on the Ladder of the Cross <i>Ink wash and pen and ink</i>	26 x 12
150. Two Figures on the Cross with Lanterns <i>Pen and ink, black conté</i>	26 x 30
• 151. Figures at the Cross <i>Charcoal</i>	60 x 40
152. Figure Leaning over the Cross holding Shroud <i>Ink wash</i>	40 x 60

- |  |           |
|--|-----------|
| 153. Discesa della Croce<br><i>Ink wash and pen and ink</i>        | 16½ x 22  |
| ✓ 154. Woman at the Cross<br><i>Ink wash and pen and ink</i>       | 10½ x 13½ |
| 155. Three Figures at the Cross<br><i>Ink wash and pen and ink</i> | 10½ x 19  |
| 156. Figures at the Cross<br><i>Ink and casein</i>                 | 40 x 60   |

## ROOSTER

### PAINTING

- |  |         |
|--|---------|
| ✓ 157. Rooster on the Arm of the Cross<br><i>Duco on Upson board</i> | 96 x 48 |
|--|---------|

### DRAWINGS

- |  |         |
|--|---------|
| ✓ 158. Rooster<br><i>Ink wash</i>                          | 40 x 30 |
| ✓ 159. Rooster<br><i>Black conté on illustration board</i> | 30 x 40 |
| ✓ 160. Rooster<br><i>Ink wash on illustration board</i>    | 15 x 40 |

## RUNNING FIGURES

### DRAWINGS

- |  |         |
|--|---------|
| 161. Two Running Figures<br><i>Ink wash, black conté</i>       | 10 x 15 |
| 202. Arm on the Arm of the Cross<br><i>Duco on upson board</i> | 24 x 96 |





- |   |          |
|---|----------|
| 162. Three Running Figures<br><i>Ink wash</i>                           | 9 x 12½  |
| 163. Running Figures on Crutches<br><i>Black conté</i>                  | 9½ x 14½ |
| 164. Two Running Figures on Crutches<br><i>Ink wash and pen and ink</i> | 11 x 15  |

## MASSACRE OF THE INNOCENTS

### DRAWINGS

- |  |          |
|--|----------|
| 165. Massacre of the Innocents<br><i>Charcoal on illustration board</i>      | 30 x 40  |
| 166. Massacre of the Innocents<br><i>Ink wash, pen and ink, yellow paper</i> | 19 x 24  |
| 167. Massacre of the Innocents<br><i>Charcoal</i>                            | 80 x 120 |
| 168. Massacre of the Innocents<br><i>Ink wash</i>                            | 60 x 80  |
| 169. Massacre of the Innocents<br>[Cartoon]<br><i>Ink wash</i>               | 30 x 40  |
| 170. Massacre of the Innocents<br>Lent by Mr. Ross Deveau                    |          |
| 171. Massacre of the Innocents<br><i>Pen and ink, tan paper</i>              | 17 x 22  |
| 172. Massacre of the Innocents<br><i>Pen and ink, tan paper</i>              | 22 x 17  |

✓ 172-a Massacre of the Innocents

## SOLDIER AND WOMEN HEADS

### PAINTINGS

- |   |         |
|---|---------|
| 173. Golgotha Head<br><i>Casein</i>             | 20 x 24 |
| 174. Three Soldiers Heads<br><i>Pen and ink</i> | 25 x 19 |

175. Soldier Head	25 x 19 $\frac{3}{4}$
<i>Pen and ink, brown conté, green paper</i>	
176. Soldier Head	26 x 20
<i>Black conté</i>	
177. Woman's Head	15 x 19
<i>Brown conté</i>	
178. Woman's Head	9 x 11 $\frac{1}{4}$
<i>Pen and ink, brown conté</i>	
179. Woman's Head	25 x 19
<i>Ink wash</i>	
180. Woman's Head	25 x 19
<i>Ink wash</i>	
181. Woman's Head with Clenched Hands	24 x 19
<i>Pen and ink, yellow paper</i>	
182. Soldier Head	7 $\frac{3}{4}$ x 9
<i>Pen and ink, brown conté</i>	
183. Soldier Head	25 x 19
<i>Black conté, charcoal, grey paper</i>	
184. Woman's Head	25 x 19
<i>Ink wash, tan paper</i>	
185. Woman's Head	26 x 20
<i>Brown-and-black conté, pen and ink</i>	
186. Woman's Head	25 x 19
<i>Black conté</i>	
187. Two Soldiers' Heads	
<i>Ink wash</i>	

## LADDER

### PAINTINGS

188. Ladder of the Cross	120 x 22
<i>Duco</i>	
189. Ladder of the Cross	65 $\frac{3}{4}$ x 26
<i>Duco</i>	

### DRAWING

190. Ladder and Cross	40 x 30
<i>Brown, black-and-white-casein on illustration board</i>	

**TANK, WHEEL, WALL****PAINTINGS**

- ✓ 191. Caterpillar 63½ x 122  
*Duco*
- ✓ 192. Fragment of Tank 36 x 81  
*Duco*
- ✓ 193. Fragment of Tank 36 x 96  
*Duco*
- ✓ 194. Burning Wheel 36 x 72  
*Duco*
- ✓ 195. Burnt Passage 46 x 58  
*Casein*
- ✓ 196. Burning Tank 35 x 50  
*Casein*
- ✓ 197. Machine Gun 11 x 60  
*Casein*
- ✓ 198. Burning Tank 38 x 54  
*Duco*

**ANIMAL STUDIES (for use in soldiers' armors)****PAINTINGS**

- ✓ 199. Mata-mata 24½ x 29½  
*Casein*  
Lent by Mrs. Rico Lebrun
- ✓ 200. Armadillo 12 x 36  
*Duco*

**DRAWING**

- ✓ 201. Mata-mata 20 x 30  
*Black-and-brown conté, pen and ink*

# CROSS

## PAINTINGS

- 202. Arm on the Arm of the Cross 24 x 96  
*Duco on Upson board*
- 203. Cross 144 x 120  
*Duco*
- 204. Wood of the Holy Cross  
*Casein*
- 205. Study for the Arm of the Cross 30 x 48  
*Duco*  
Lent by Mr. William Moore

## PAINTINGS

- 206. Cross with Heads and Flares 12 x 18½  
*Ink wash and pen and ink*

*205-a Shroud on the Cross*