

Exhibition URL

[www.moma.org/calendar/exhibitions/3355](http://www.moma.org/calendar/exhibitions/3355)

The Museum of Modern Art's exhibition history—  
from our founding in 1929 to the present—is  
available online. It includes exhibition catalogues,  
primary documents, installation views, and an  
index of participating artists.



**NEW TALENT**

*in the Penthouse*

*April 1 – April 30, 1959*

*The Museum of Modern Art*

*11 West 53 Street, New York*

5

**DAVID V. HAYES**

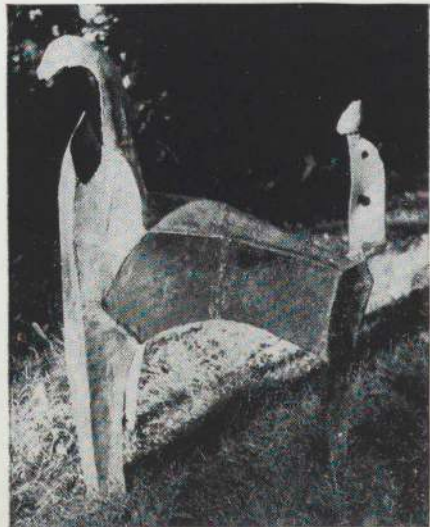
Archive  
MoMA  
642

The Museum of Modern Art Library

**DAVID V. HAYES**

David V. Hayes was born in Hartford, Connecticut in 1931. In 1953 he graduated from the University of Notre Dame where he studied sculpture with the Rev. Antony Lauck, C.S.C. He did his graduate work with Robert Laurent and David Smith at Indiana University, and received his Master of Fine Arts degree there in 1955. From 1955-57 he was in the U. S. Navy, spending one year in the Mediterranean area. He has had one-man shows at Indiana University, Bloomington, Indiana in 1955, Wesleyan University, Middletown, Conn. in 1958 and Lyman Allyn Museum, New London, Conn. in February, 1959. Work by him has been included in exhibitions at the Swetznoff Gallery, Boston in 1956; the New Haven, Conn. Festival of Arts and the Solomon R. Guggenheim Museum, New York in 1958. He will participate in the exhibition *Recent Sculpture U.S.A.* to be held at the Museum of Modern Art, opening on May 13, 1959. Hayes is represented in the collection of the Solomon R. Guggenheim Museum, New York and private collections in New York City and Bloomington, Indiana. He has received several commissions for sculpture for churches and private homes in Connecticut and Arizona. He is married, with one child, and lives in Manchester, Connecticut. His workshop is located at the Fuller Welding Company, Hartford.

2



3



6



SCULPTURE

- 1 *Torso*. 1957.  
Welded steel, 36½" high. \$700
- 2 *Lion*. 1957.  
Welded steel, 41½" high. \$800
- 3 *Pregnant Woman*. 1957.  
Welded steel, 6' high. \$1200

- 4 *Bull's Head*. 1958.  
Welded steel, 64¼" high. \$850
- 5 *Woman Dressing*. 1958.  
Welded steel, 67⅞" high. \$900
- 6 *Animal Totem*. 1958.  
Welded steel, 7' high. \$1500
- 7 *Dog*. 1959.  
Welded steel, 25½" high. \$500



## DRAWINGS

- 8 *Groups of Animals*. 1957.  
Pencil, 19 x 25". \$50
- 9 *Figure Study I*. 1957.  
Ink, 19 $\frac{1}{8}$  x 24". \$50
- 10 *Figure Study II*. 1957.  
Ink, 20 $\frac{1}{8}$  x 26 $\frac{1}{4}$ ". \$50
- 11 *Study for Bull's Head I*. 1957.  
Watercolor and ink, 13 $\frac{7}{8}$  x 9 $\frac{7}{8}$ ". \$40
- 12 *Study for Bull's Head II*. 1957.  
Watercolor and ink, 13 $\frac{7}{8}$  x 9 $\frac{7}{8}$ ". \$40
- 13 *Sheep*. 1957.  
Watercolor and ink, 18 x 24". \$70
- 14 *Cows*. 1957.  
Watercolor and ink, 27 $\frac{1}{8}$  x 19 $\frac{7}{8}$ ". \$80
- 15 *Cows*. 1957.  
Watercolor and ink, 19 $\frac{3}{4}$  x 27". \$80
- 16 *Cows*. 1957.  
Gouache, 22 $\frac{1}{4}$  x 29 $\frac{1}{8}$ ". \$60
- 17 *Goats*. 1957.  
Ink, 21 $\frac{3}{8}$  x 29". \$55
- 18 *Horses*. 1957.  
Ink, 19 $\frac{7}{8}$  x 26". \$50
- 19 *Study for Group Sculpture*. 1958.  
Watercolor and ink, 18 $\frac{7}{8}$  x 25". \$60
- 20 *Study for Sculpture*. 1958.  
Watercolor and ink, 19 x 12 $\frac{1}{2}$ ". \$45
- 21 *Umbrella Figures*. 1958.  
Ink. Four studies, 10 x 14" each. \$80

*All works lent by the artist*

*After an interval of two years, the Museum is resuming its New Talent exhibitions. Since the inauguration of these shows in 1950 exhibition opportunities for young and relatively unknown artists in New York have increased many times. The artists' cooperatives on 10th Street, for instance, are rendering especially important services to both artist and public. Nevertheless, the Museum again wishes to place before its members the work of lesser-known painters and sculptors who merit being introduced to the public. In its New Talent exhibitions, the Museum is sponsoring artists who have not had a major one-man show in New York City. "New Talent" does not exclude artists whose work is well-known elsewhere. It does not imply an age limit.*

*The eleventh New Talent exhibition is again held in the informal surroundings of the Museum's Penthouse. However, it differs from previous shows in concentrating on work of a single artist. In this way we can do greater justice to the work within the available space. We have chosen the work of DAVID V. HAYES, a 28-year-old sculptor from Connecticut. Miss Alicia Legg, Assistant Curator of the Department of Painting and Sculpture Exhibitions, has collaborated in the selection.*

*All the works in the exhibition are for sale to the members of the Museum. The Museum takes no commission on these sales.*

*In order that all who wish may see it, the exhibition will be open to the public on Mondays, Tuesdays and Wednesdays from 3:00 to 6:00 P.M. Visitors are reminded that they are invited to become members of the Museum at any time.*

Peter Selz, Curator  
Department of Painting and  
Sculpture Exhibitions