

32 masterworks of Andean art from the exhibition Ancient arts of the Andes

Author

Museum of Modern Art (New York, N.Y.)

Date

1955

Publisher

[publisher not identified]

Exhibition URL

www.moma.org/calendar/exhibitions/3317

The Museum of Modern Art's exhibition history—from our founding in 1929 to the present—is available online. It includes exhibition catalogues, primary documents, installation views, and an index of participating artists.

32

MASTERWORKS OF ANDEAN ART



THE MUSEUM OF MODERN ART



Cover: Fig. 1. Pendant with two animals. Veraguas. Gold. 3" high x 3½" wide. Collection: Nelson A. Rockefeller, New York

Archive

55.2.24



Fig. 2. Nose ornament. Peru. Gold. $2\frac{1}{8}$ " high x $5\frac{3}{4}$ " long. Collection: Norbert Mayrock, Santiago, Chile

32 MASTERWORKS OF ANDEAN ART

from the exhibition **ANCIENT ARTS OF THE ANDES**

THE MUSEUM OF MODERN ART

PREFACE

The objects included in this supplement to the volume *Ancient Arts of the Andes* (published March, 1954) were lent to the exhibition at the Museum of Modern Art from four great collections: the Robert Woods Bliss Collection of Washington, D. C.; the Rafael Larco Hoyle Collection of Chiclin, Peru; the Norbert Mayrock Collection of Santiago, Chile; and the Nelson A. Rockefeller Collection of New York. Those from Chile and Peru were shown in the United States for the first time in the exhibition *Ancient Arts of the Andes* (January 26-March 21, 1954) but arrived in this country too late to be included in the original publication. A few of the pieces included in the first volume are being republished here because it was felt that the first photographs did not adequately reproduce their esthetic qualities.

The 32 objects included in this supplement represent many styles and many periods of Andean art. They are tied together by their esthetic and technical excellence, and by sensitive handling of material.

In non-western and new world archeology, the emphasis on artistic merit is relatively recent. While there is now an awakening recognition of the esthetic value of individual objects, most publications are still using them to illustrate trends in technique and design characteristic of a phase of civilization.

In preparing this supplement, the Museum was fortunate in obtaining the services of Nickolas Muray whose sensitive photography reveals the plastic qualities of the objects and allows opportunities for the study of details as well as of the whole.

This supplement has been produced under a grant from the Wenner-Gren Foundation for Anthropological Research, Inc.

RENÉ D'HARNONCOURT



Fig. 3. Disk. Chavin style. Gold. $4\frac{7}{8}$ " diameter. Collection: Robert Woods Bliss, courtesy of the National Gallery of Art, Washington, D. C.



Fig. 4. Pendant, Chavín de Huantár. Black stone inlaid with turquoise. $2\frac{5}{8}$ " high x $1\frac{7}{8}$ " wide. Collection: Rafael Larco Hoyle, Chiclin, Peru

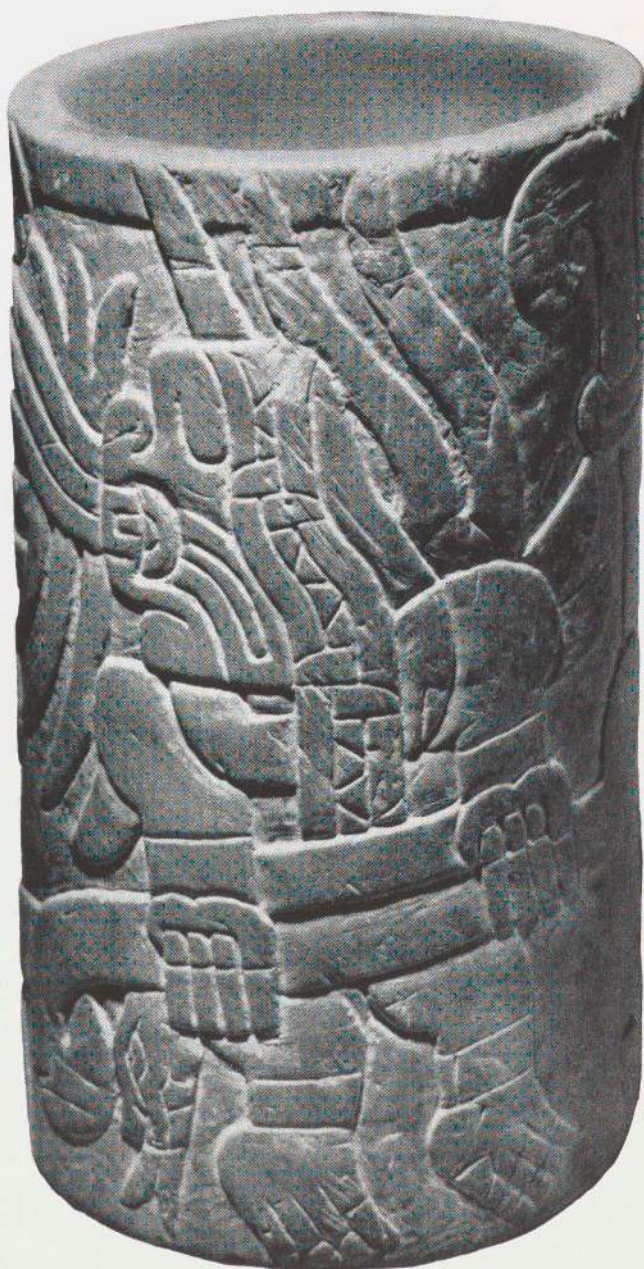


Fig. 5. Cup, Chavín de Huantár. Carved soapstone. $4\frac{1}{8}$ " high. Collection: Robert Woods Bliss, courtesy of the National Gallery of Art, Washington, D. C.

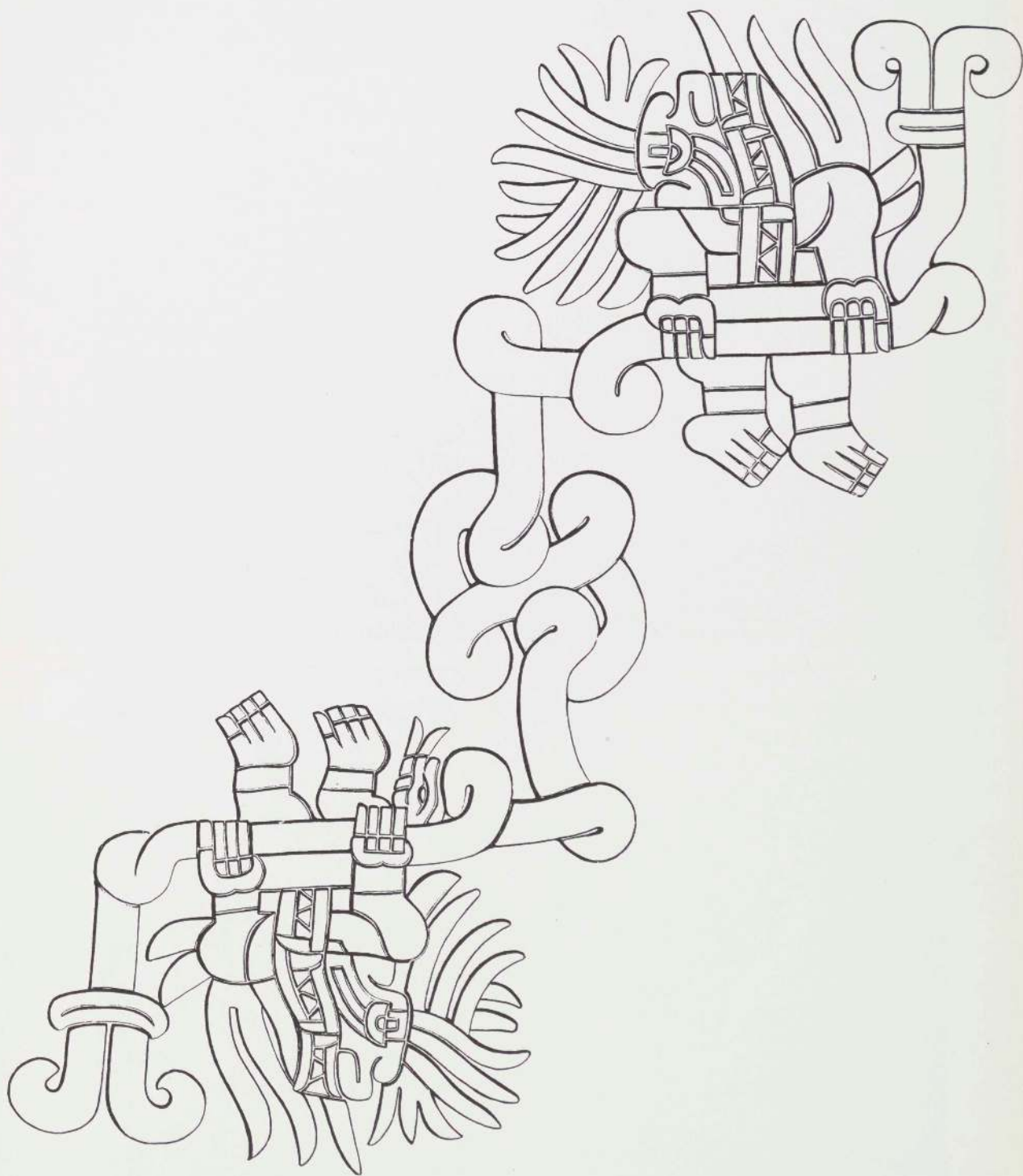
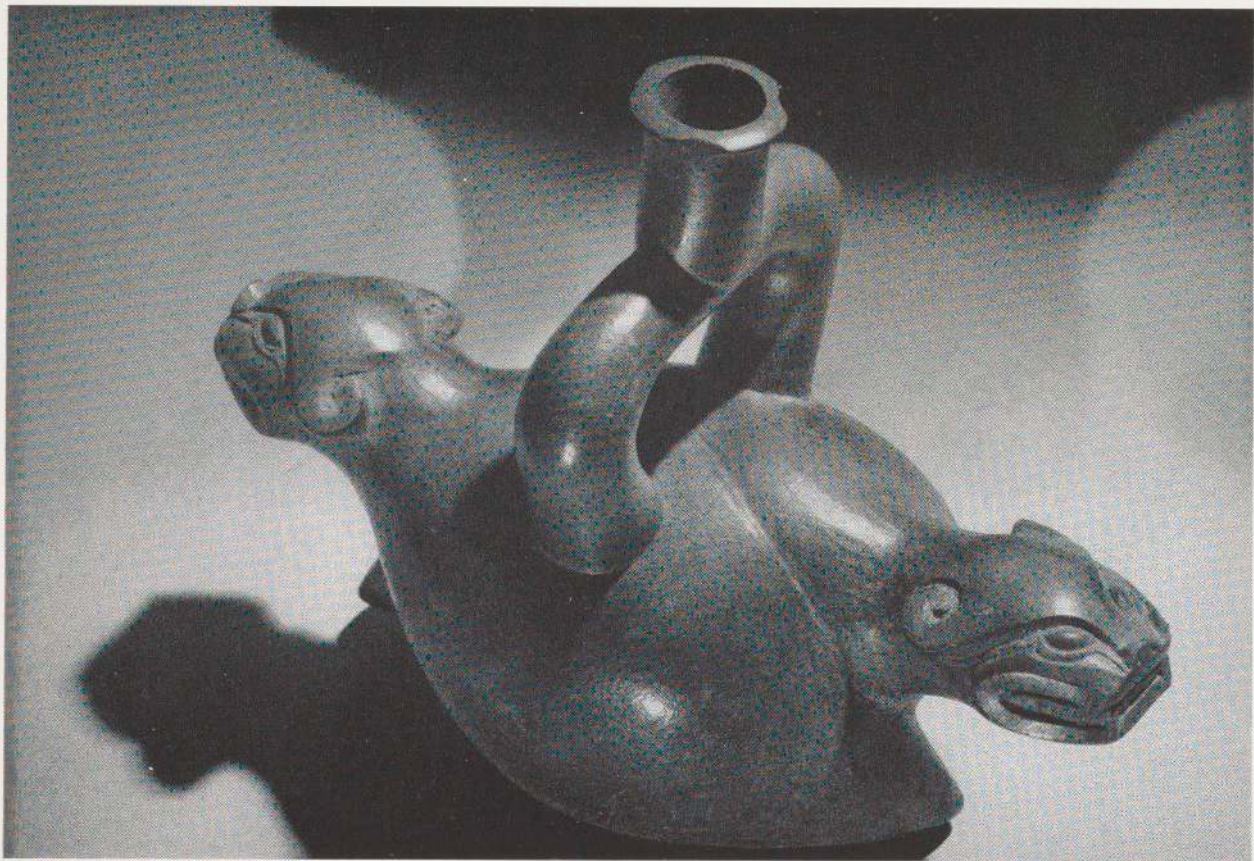


Fig. 5a. "Roll-out" drawing of feline design on Fig. 5.



Above: Fig. 6. Single-spout vessel representing two snakes with feline heads. Cupisnique. Clay. $7\frac{7}{8}$ " high x $10\frac{1}{4}$ " long. Collection: Rafael Larco Hoyle, Chiclin, Peru

Right: Fig. 7. Single-spout vessel in shape of seated woman. Cupisnique. Clay. $9\frac{1}{2}$ " high. Collection: Rafael Larco Hoyle, Chiclin, Peru

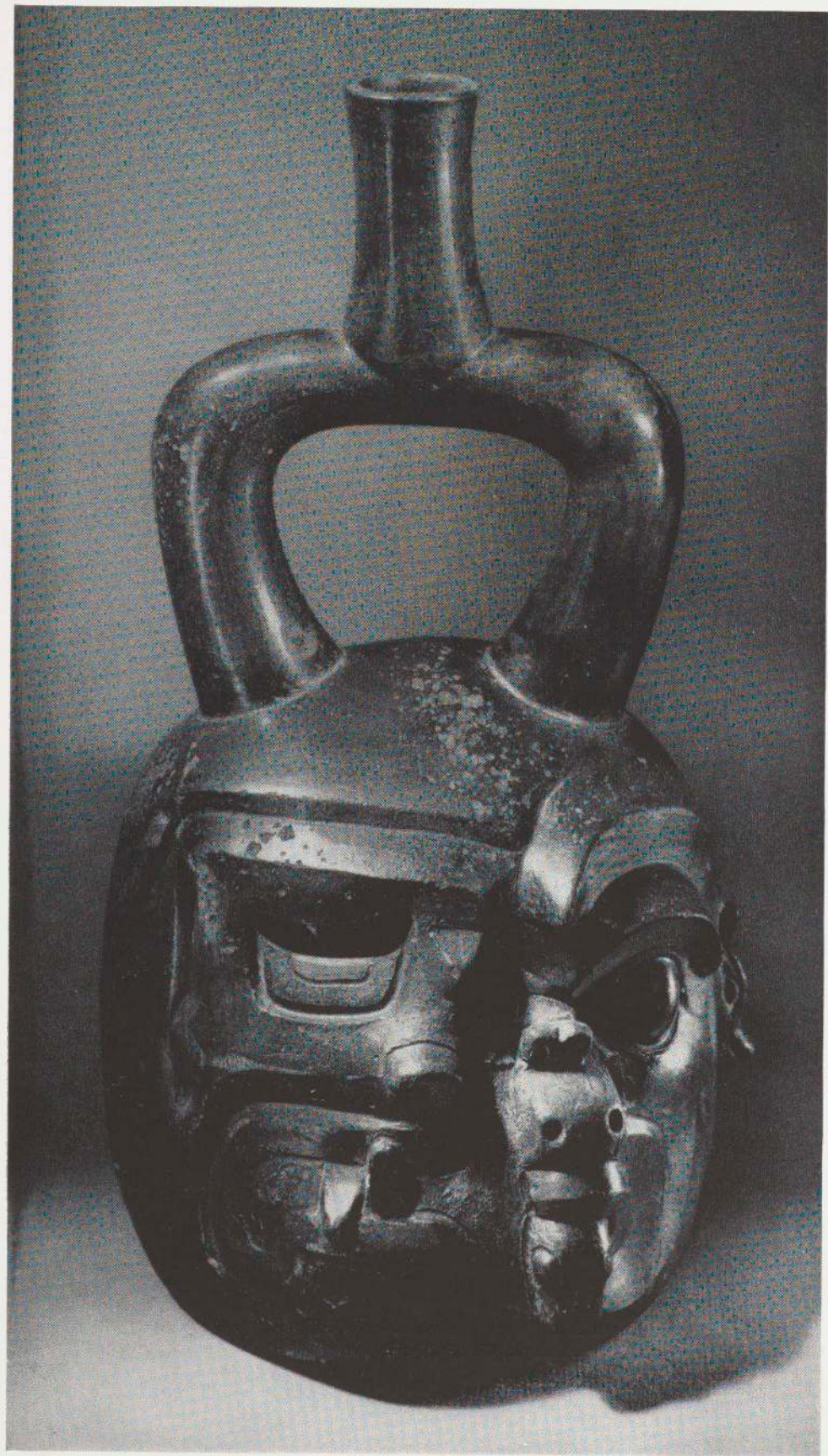


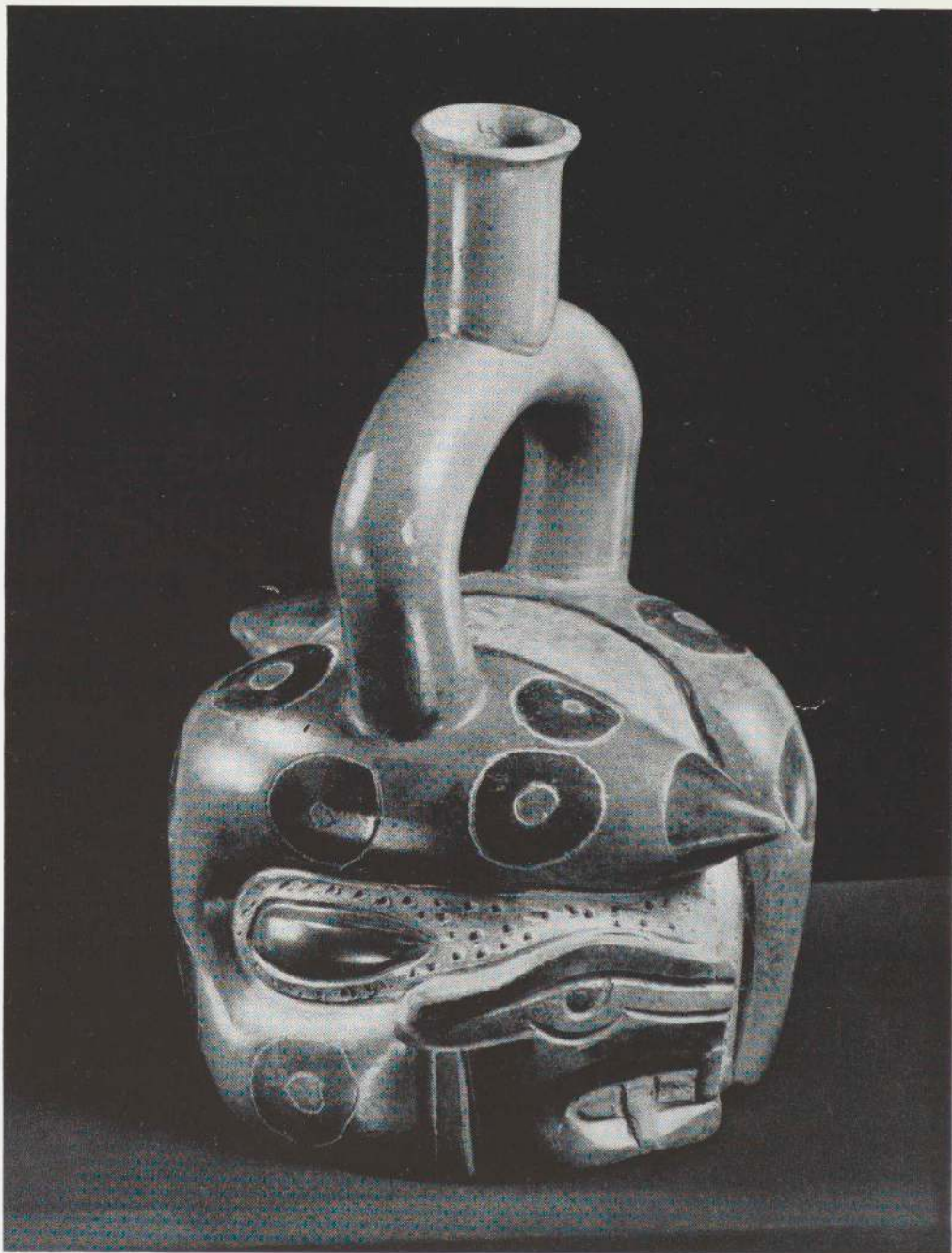




Above: Fig. 8. Single-spout jar with engraved representation of feline deity. Cupisnique. Clay. 8 $\frac{3}{8}$ " high. Collection: Rafael Larco Hoyle, Chiclin, Peru

Left: Fig. 9. Bottle in geometric shape. Cupisnique. Clay. 10 $\frac{1}{8}$ " high. Collection: Rafael Larco Hoyle, Chiclin, Peru





MMA 6614

Above: Fig. 10. Single-spout vessel representing two intertwined snakes. Cupisnique. Clay. $9\frac{1}{8}$ " high. Collection: Rafael Larco Hoyle, Chiclin, Peru

Left: Fig. 11. Single-spout vessel with composite image representing a half human, half feline head. Cupisnique. Clay. $9\frac{3}{4}$ " high. Collection: Rafael Larco Hoyle, Chiclin, Peru

Fig. 12. Figure of animal with protruding vertebrae. Peru. Bronze. $1\frac{7}{8}$ "
high. Collection: Norbert Mayrock, Santiago, Chile



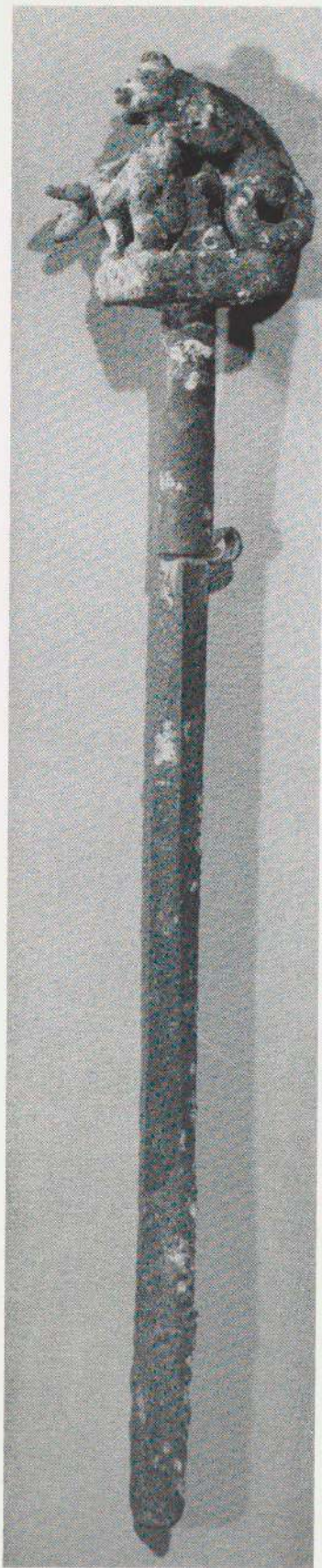


Fig. 13. Pin surmounted by jaguar killing deer. Peru. Bronze inlaid with turquoise. 8½" long. Full view and enlarged detail above. Collection: Norbert Mayrock, Santiago, Chile

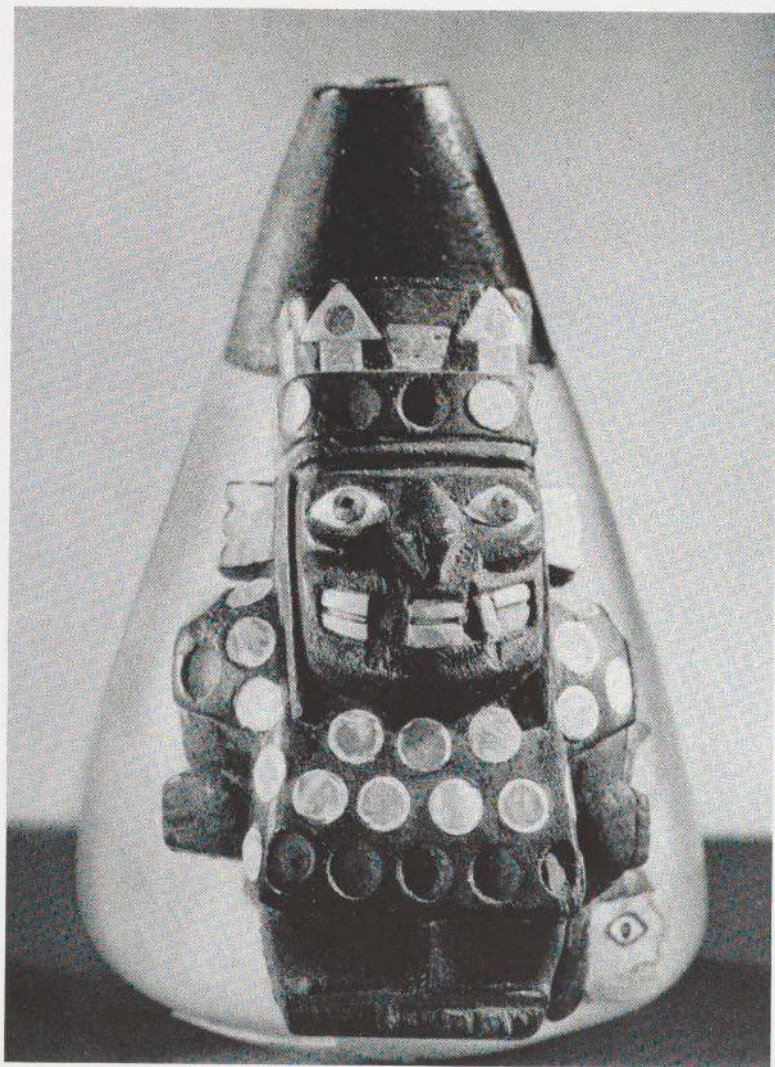


Fig. 14. Lime container with jaguar god, Peru. Shell, carved and inlaid with turquoise, $2\frac{3}{4}$ " high. Collection: Norbert Mayrock, Santiago, Chile



Left: Fig. 15. Figurine. Peru. Blue stone. $2\frac{7}{8}$ " high.
Collection: Norbert Mayrock, Santiago, Chile

Below: Fig. 16. Openwork shell ornament with jaguar motif.
Peru. Turquoise inlay. $2\frac{1}{4}$ " high. Collection: Norbert Mayrock, Santiago, Chile

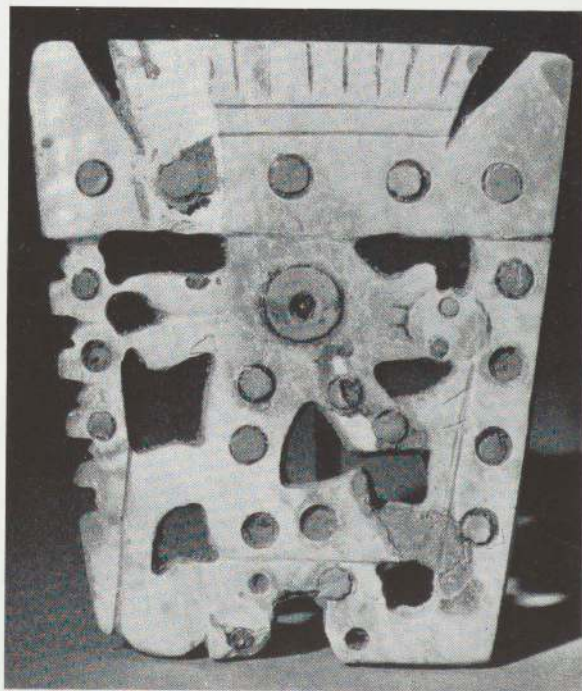




Fig. 17. Pin surmounted by animal group. Peru. Bronze. $8\frac{1}{2}$ " long.
Collection: Norbert Mayrock, Santiago, Chile



Left: Fig. 18. Handle of sceptre with man and jaguar. Peru. Wood. 4 $\frac{7}{8}$ " high. Collection: Norbert Mayrock, Santiago, Chile

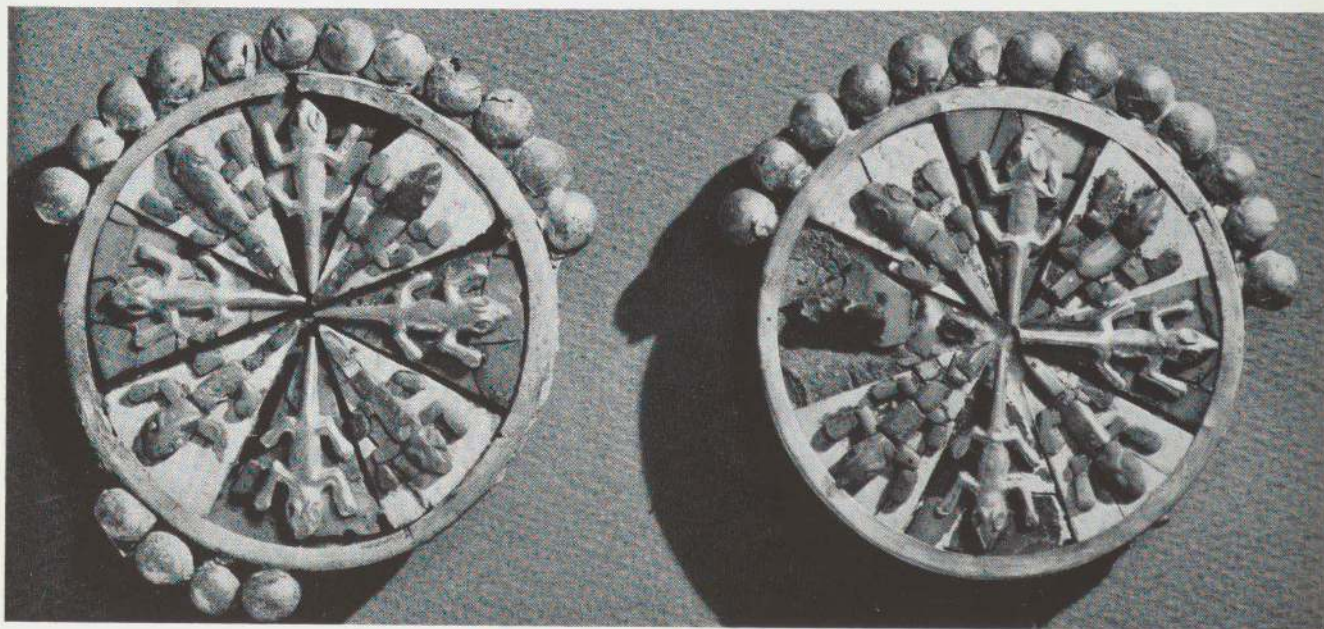
Fig. 19. Spade with sculptured inset of two jaguar cubs. Mochica. Bronze. 6 $\frac{1}{8}$ " high. Collection: Norbert Mayrock, courtesy of the Museum für Völkerkunde, Munich, Germany

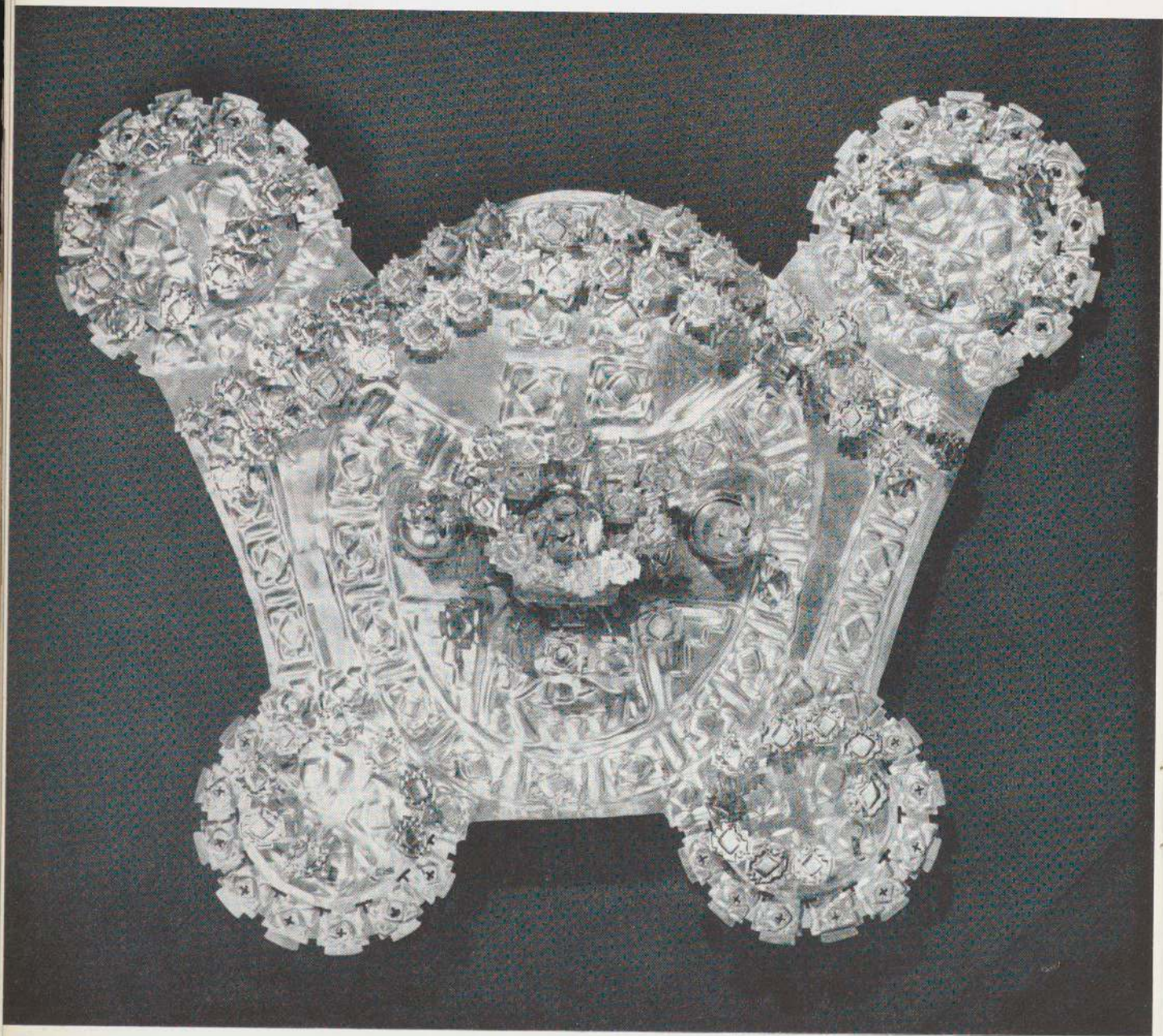




Fig. 20. Ear plugs decorated with representations of a warrior. Mochica. Turquoise, gold and shell. 4" diameter, c. 3 $\frac{3}{4}$ " high. Collection: Rafael Larco Hoyle, Chiclin, Peru

Fig. 21. Ear plugs decorated with lizards. Mochica, Turquoise, gold and shell. 3" diameter, $\frac{3}{4}$ " high. Collection: Rafael Larco Hoyle, Chiclin, Peru





Left: Fig. 22. Pectoral, Lambayeque. Repoussé gold. 15" high. Collection: Robert Woods Bliss, courtesy of the National Gallery of Art, Washington, D. C.

Right: Fig. 23. Ear plug, Lambayeque. Repoussé gold. 9 $\frac{3}{4}$ " long. Collection: Robert Woods Bliss, courtesy of the National Gallery of Art, Washington, D. C.

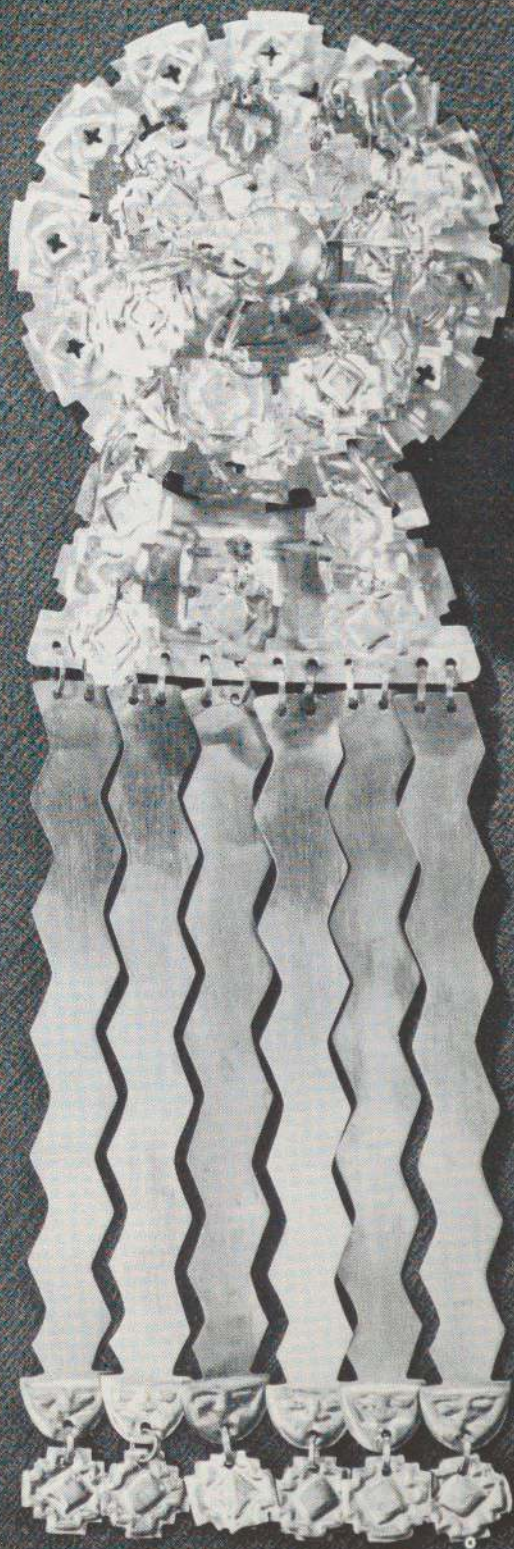




Fig. 24. Head ornament with feline face and condors. Mochica. Repoussé gold. 9" high x 10 $\frac{1}{8}$ " wide. Collection: Rafael Larco Hoyle, Chiclin, Peru



Fig. 25. Head ornament with human face and jaguars. Mochica. Repoussé gold. $10\frac{3}{4}$ " high x $11\frac{3}{4}$ " wide. Collection: Rafael Larco Hoyle, Chiclin, Peru



Fig. 26. Head ornament with central figure standing out from flat repoussé sheet. Mochica. Gold. $9\frac{3}{4}$ " high x 12" wide. Collection: Rafael Larco Hoyle, Chiclin, Peru

Fig. 27. Head ornament with face of feline deity and eagle plumes. Mochica. Repoussé gold. 11" high x 14½" wide.
Collection: Rafael Larco Hoyle, Chiclin, Peru



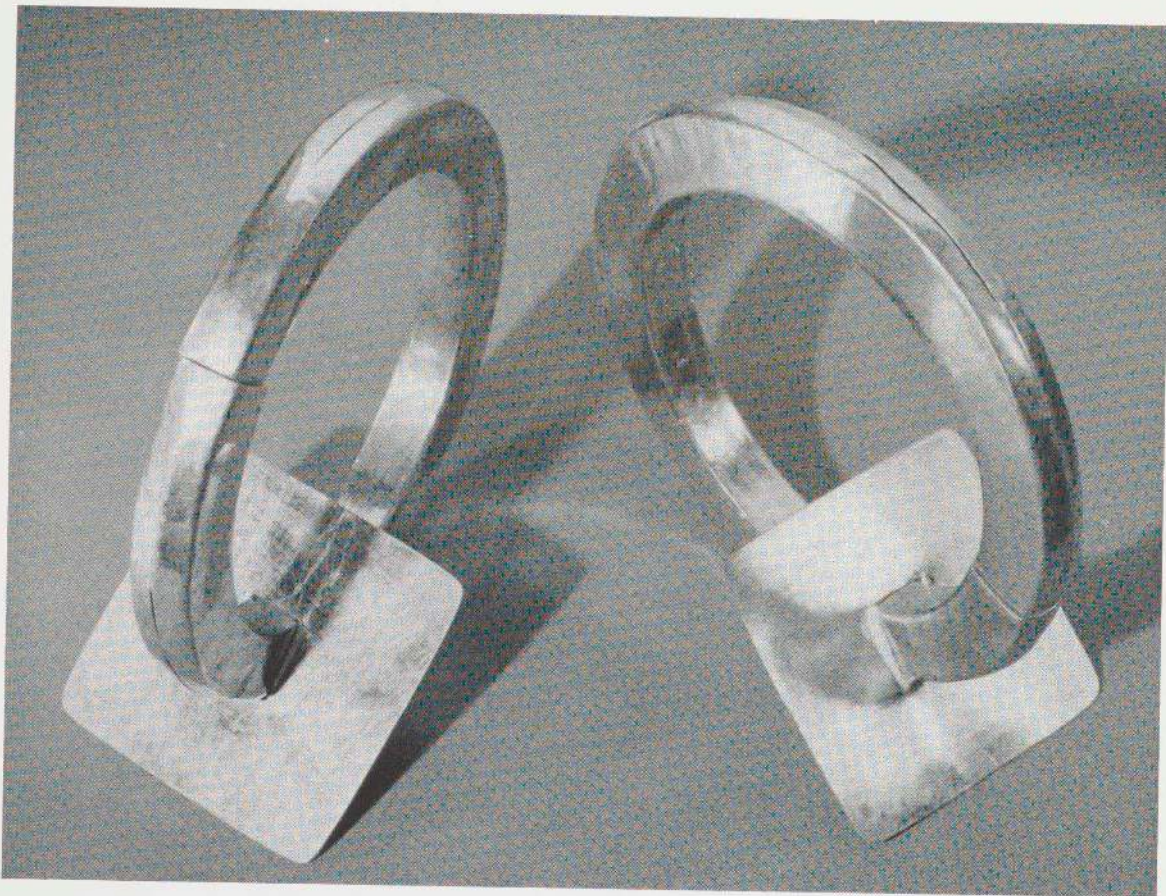


Fig. 28. Two ear ornaments with perforated square dangles. Peru. Gold. $5\frac{1}{8}$ " diameter. Collection: Robert Woods Bliss, courtesy of the National Gallery of Art, Washington, D. C.

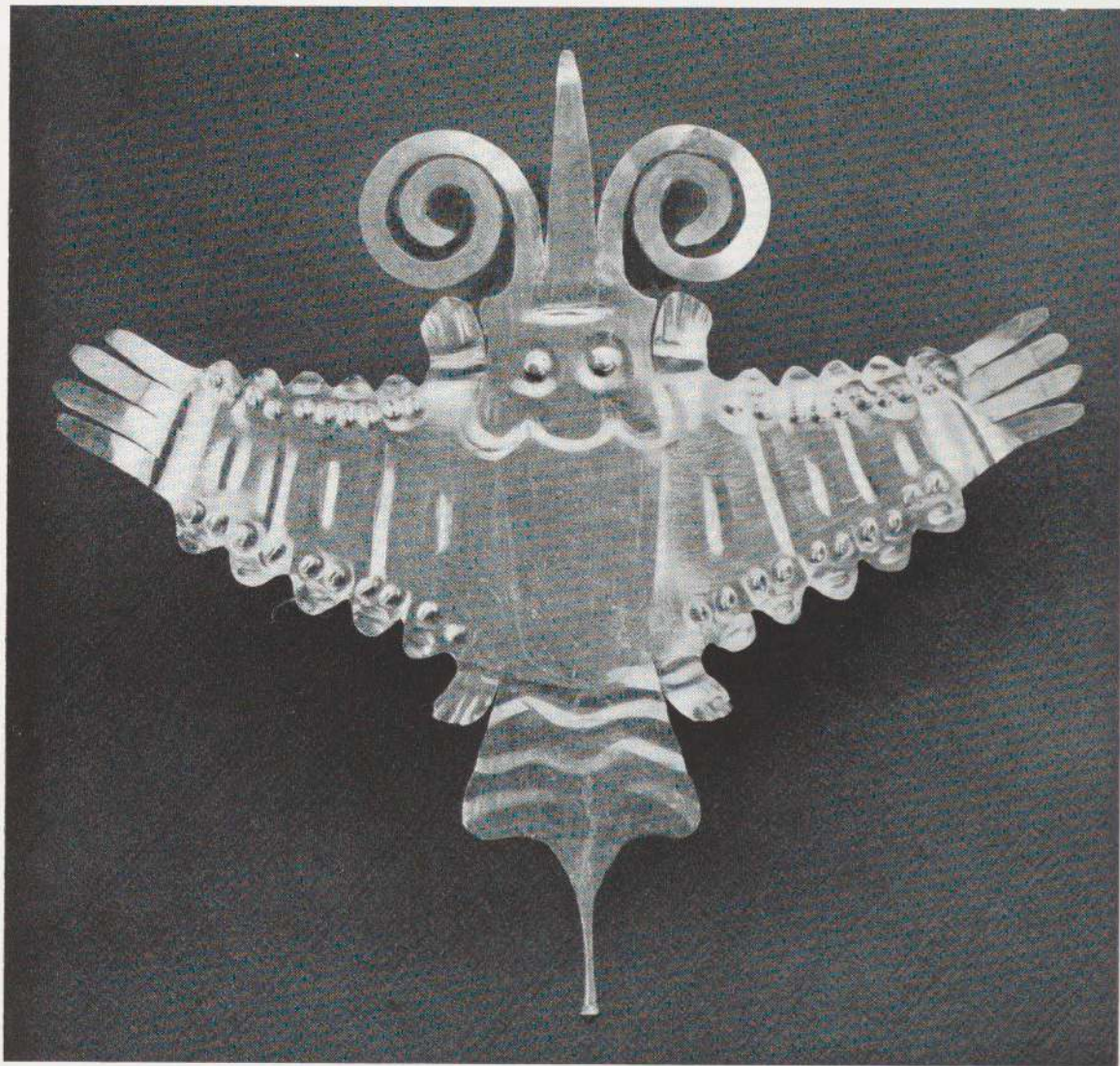
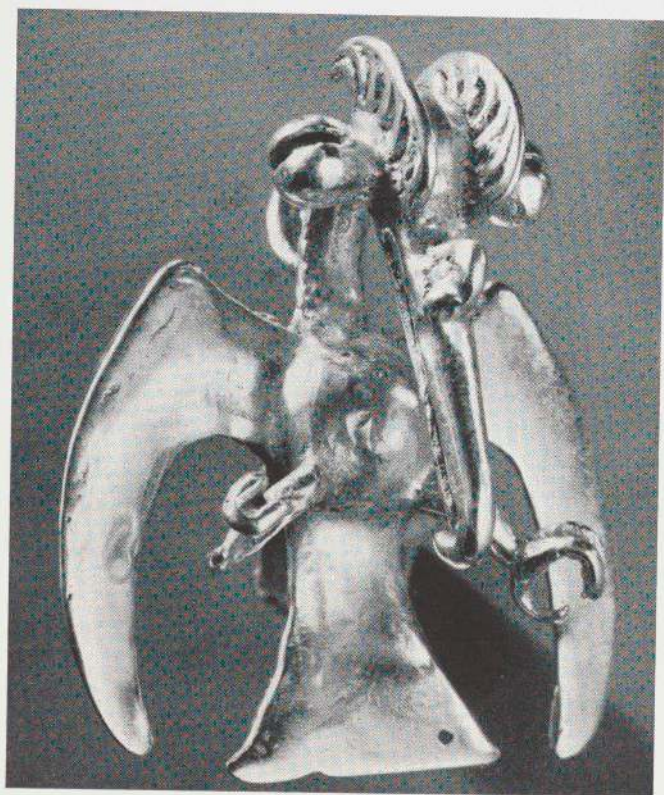
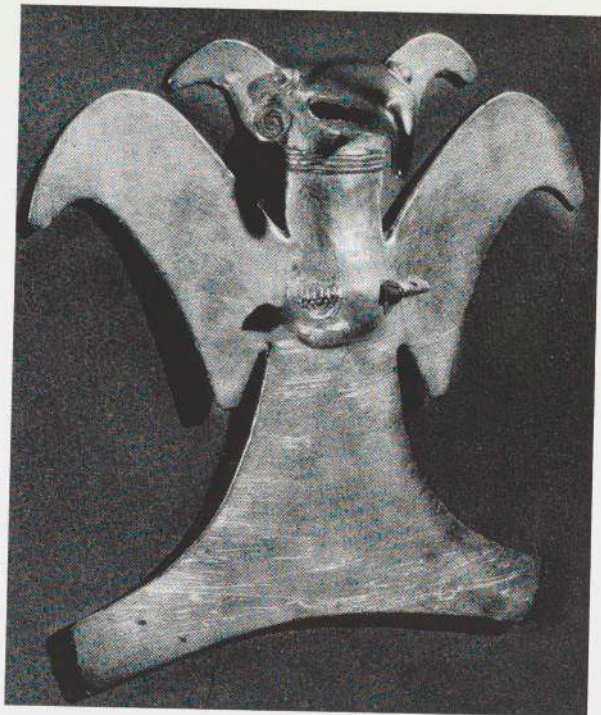


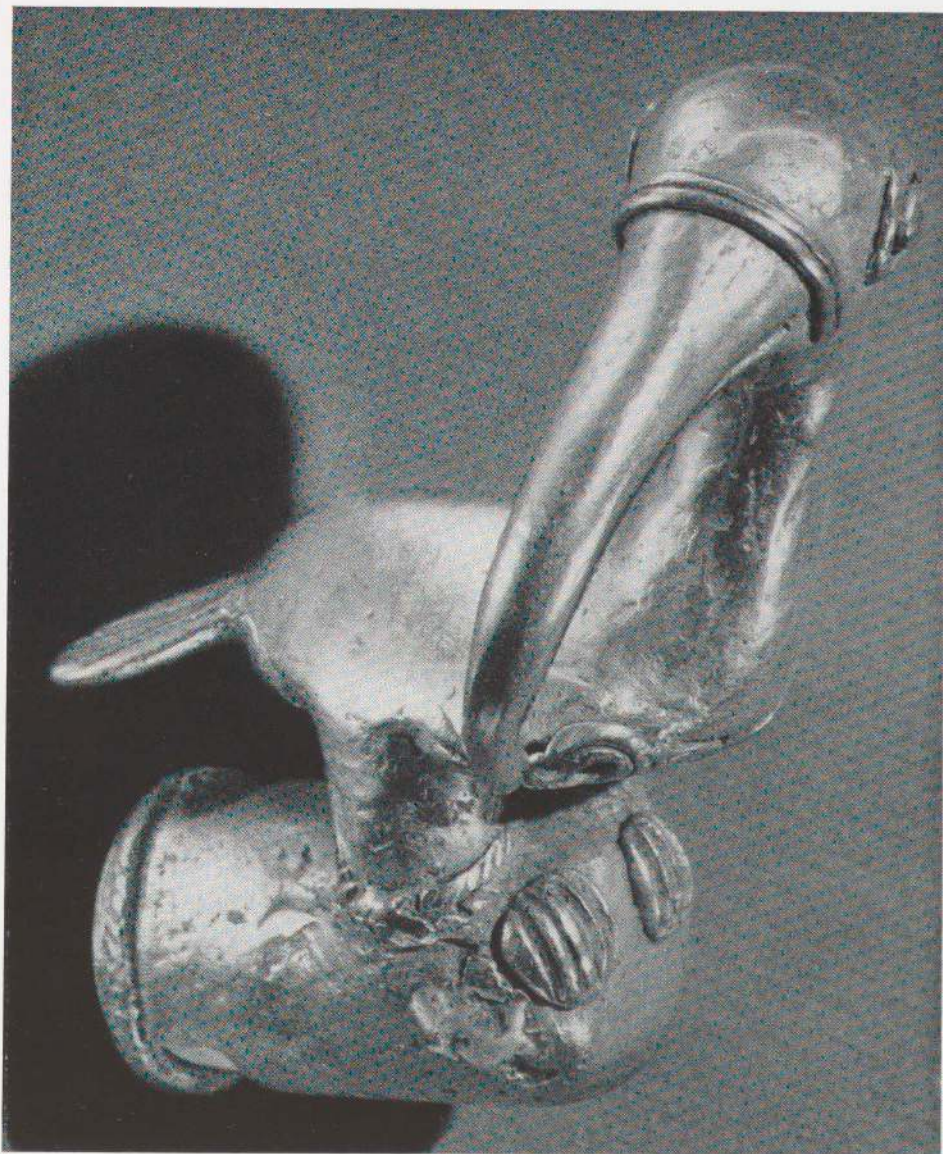
Fig. 29. Bat. Peru. Repoussé gold. $9\frac{3}{4}$ " high x $10\frac{3}{8}$ " wide. Collection: Robert Woods Bliss, courtesy of the National Gallery of Art, Washington, D. C.



Above: Fig. 30. Cormorant. Quimbaya. Gold. $2\frac{3}{8}$ " high. Collection: Robert Woods Bliss, courtesy of the National Gallery of Art, Washington, D. C.

Left: Fig. 31. Eagle. Veraguas. Gold. 6" high. Collection: Robert Woods Bliss, courtesy of the National Gallery of Art, Washington, D. C.

Fig. 32. Finial of staff surmounted by bird. Quimbaya. Gold. $3\frac{3}{4}$ " high. Collection: Robert Woods Bliss, courtesy of the National Gallery of Art, Washington, D. C.



TRUSTEES OF THE MUSEUM OF MODERN ART

ALFRED H. BARR, JR., MRS. ROBERT WOODS BLISS, WILLIAM A. M. BURDEN, STEPHEN C. CLARK, RALPH F. COLIN, *MRS. W. MURRAY CRANE, RENÉ D'HARNONCOURT, MRS. EDSSEL B. FORD, PHILIP L. GOODWIN, A. CONGER GOODYEAR, *MRS. SIMON GUGGENHEIM, WALLACE K. HARRISON, *JAMES W. HUSTED, MRS. ALBERT D. LASKER, MRS. DAVID M. LEVY, MRS. CLARE BOOTHE LUCE, RANALD H. MACDONALD, MRS. SAMUEL A. MARX, MRS. G. MACCULLOCH MILLER, HENRY ALLEN MOE, WILLIAM S. PALEY, MRS. BLISS PARKINSON, MRS. CHARLES S. PAYSON, *DUNCAN PHILLIPS, ANDREW CARNDUFF RITCHIE, DAVID ROCKEFELLER, MRS. JOHN D. ROCKEFELLER 3RD, NELSON A. ROCKEFELLER, BEARDSLEY RUMMLER, *PAUL J. SACHS, JOHN L. SENIOR, JR., JAMES THRALL SOBY, EDWARD M. M. WARBURG, MONROE WHEELER, JOHN HAY WHITNEY.

* HONORARY TRUSTEE FOR LIFE

*Supplement designed by Mildred Constantine
Copyright 1955, The Museum of Modern Art, New York
Printed in the United States of America
Library of Congress Catalogue Card No. 55-7849*

