

# **Painting and sculpture by living Americans : ninth loan exhibition, December 2, 1930 to January 20, 1931**

Author

Museum of Modern Art (New York, N.Y.)

Date

1930

Publisher

The Museum of Modern Art

Exhibition URL

[www.moma.org/calendar/exhibitions/1916](http://www.moma.org/calendar/exhibitions/1916)

The Museum of Modern Art's exhibition history—  
from our founding in 1929 to the present—is  
available online. It includes exhibition catalogues,  
primary documents, installation views, and an  
index of participating artists.

**PAINTING  
SCULPTURE**

**BY LIVING  
AMERICANS**

**MUSEUM OF MODERN ART**

**LIBRARY**  
**THE MUSEUM  
OF MODERN ART**  
Received:

PAINTING AND SCULPTURE  
BY LIVING AMERICANS

NINTH LOAN EXHIBITION

DECEMBER 2, 1930 TO JANUARY 20, 1931

MUSEUM OF MODERN ART

NEW YORK



Archive  
MMA  
9

55 12 8



## ACKNOWLEDGMENTS

The exhibition has been selected from the following collections

AN AMERICAN PLACE, NEW YORK  
EDWARD DUFF BALKEN, PITTSBURGH  
JAY H. BARNUM, NORWALK, CONNECTICUT  
MISS L. P. BLISS, NEW YORK  
MRS. W. MURRAY CRANE, NEW YORK  
FRANK CROWNINSHIELD, NEW YORK  
THE CHESTER DALE COLLECTION, NEW YORK  
THE DANIEL GALLERY, NEW YORK  
THE DOWNTOWN GALLERY, NEW YORK  
MRS. MURIEL DRAPER, NEW YORK  
JOHN A. DUNBAR, NEW YORK  
MRS. JULIANA R. FORCE, NEW YORK  
A. CONGER GOODYEAR, NEW YORK  
EDWARDS. GREENBAUM, NEW YORK  
DR. F. H. HIRSCHLAND, NEW YORK  
EARL HORTER, PHILADELPHIA  
JOEL T. HOWARD, DALLAS, TEXAS  
SIDNEY JANOWITZ, NEW YORK  
KRAUSHAAR GALLERIES, NEW YORK  
MR. AND MRS. SAMUEL A. LEWISOHN, NEW YORK  
MRS. CHARLES J. LIEBMAN, NEW YORK  
THE MACBETH GALLERIES, NEW YORK  
MRS. MALCOLM L. McBRIDE, CLEVELAND, OHIO  
GLENN FORD McKINNEY, NEW YORK  
DR. AND MRS. JAMES B. MURPHY, NEW YORK  
GUSTAVE NASSAUER, NEW YORK  
J. B. NEUMANN, NEW YORK  
MISS MARJORIE PATTERSON, NEW YORK  
MURDOCK PEMBERTON, NEW YORK  
THE PHILLIPS MEMORIAL GALLERY, WASHINGTON  
GEORGE D. PRATT, JR., BRIDGEWATER, CONNECTICUT  
RALPH PULITZER, NEW YORK  
THE FRANK K. M. REHN GALLERY, NEW YORK  
MRS. JOHN D. ROCKEFELLER, JR., NEW YORK

EDWARD W. ROOT, CLINTON, NEW YORK  
 PAUL ROSENFELD, NEW YORK  
 EUGENE SCHOEN, INC., NEW YORK  
 JACQUES SELIGMANN & COMPANY, NEW YORK AND PARIS  
 MRS. ELEANOR C. SHEPARDSON, NEW YORK  
 MRS. M. DE SILVER, BROOKLYN  
 HERBERT A. SPEISER, PHILADELPHIA  
 MAURICE J. SPEISER, PHILADELPHIA  
 ALFRED STIEGLITZ, NEW YORK  
 HARRY SUNDHEIM, PHILADELPHIA  
 WEYHE GALLERY, NEW YORK  
 DR. NATHAN WOLF, NEW YORK  
 THE ALBRIGHT ART GALLERY, BUFFALO  
 THE MUSEUM OF THE BROOKLYN INSTITUTE OF ARTS AND SCIENCES,  
 BROOKLYN

In addition to those who have lent pictures the Trustees and the Staff of the Museum wish to thank for their generous co-operation in assembling the exhibition:

Mr. Edward Duff Balken, Mrs. Mary T. Bullard, Mr. John Clancy, Mr. John O'Connor, Jr., Mr. Charles Daniel, Mrs. Muriel Draper, Mrs. Edith Gregor Halpert, Mr. William M. Hekking, Mr. E. C. Holston, Mr. Samuel M. Kootz, Miss A. M. Kraushaar, Mr. Julien Levy, Mr. Robert W. Macbeth, Mr. Robert C. McIntyre, Mr. J. B. Neumann, Miss M. L. Nourse, Mr. Frank K. M. Rehn, Mr. Maurice Speiser, Mr. Alfred Stieglitz, Mr. James St. L. O'Toole, Mr. Herbert B. Tschudy, Dr. Carl Ziggrosser.

## TRUSTEES

A. CONGER GOODYEAR, <i>President</i>	DUNCAN PHILLIPS
MISS L. P. BLISS, <i>Vice-President</i>	MRS. RAINEY ROGERS
MRS. JOHN D. ROCKEFELLER, JR., <i>Treasurer</i>	MRS. CHARLES C. RUMSEY
SAMUEL A. LEWISOHN, <i>Secretary</i>	PAUL J. SACHS
WILLIAM T. ALDRICH	ARTHUR SACHS
JAMES W. BARNEY	JOHN T. SPAULDING
FREDERIC C. BARTLETT	MRS. CORNELIUS J. SULLIVAN
STEPHEN C. CLARK	JOHN HAY WHITNEY
MRS. W. MURRAY CRANE	ALFRED H. BARR, JR. <i>Director</i>
FRANK CROWNINSHIELD	JERE ABBOTT <i>Associate Director</i>
CHESTER DALE	

## FOREWORD

In its Ninth Loan Exhibition the Museum of Modern Art presents the work of thirty American painters and seven sculptors none of whose work has previously been exhibited either in the Museum's Second Exhibition, "Paintings by Nineteen Living Americans," or in its Fifth Exhibition, "46 Painters and Sculptors under 35".

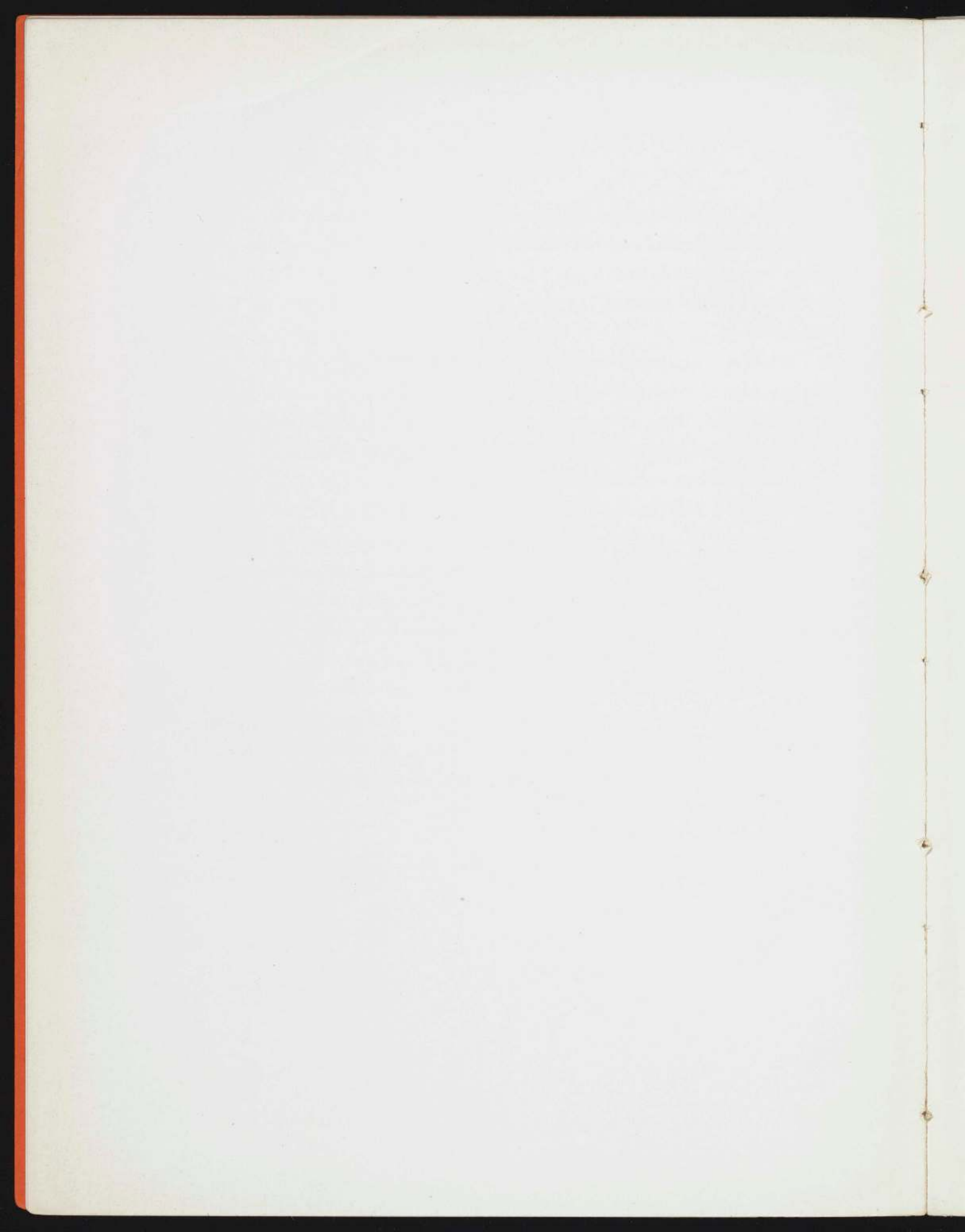
While in a sense supplementary to these two earlier exhibitions it is believed that the present exhibition may even exceed them in interest because it includes not only many of the best-known American painters and sculptors but also several who have hitherto been practically unrecognized in New York.

The Exhibition was selected by a Committee formed by four of the Trustees in conjunction with the two directors. The Museum's policy of choosing artists regardless of school is continued. As a result painters are included who are followers of the Impressionists as well as others who paint in more recent manners.

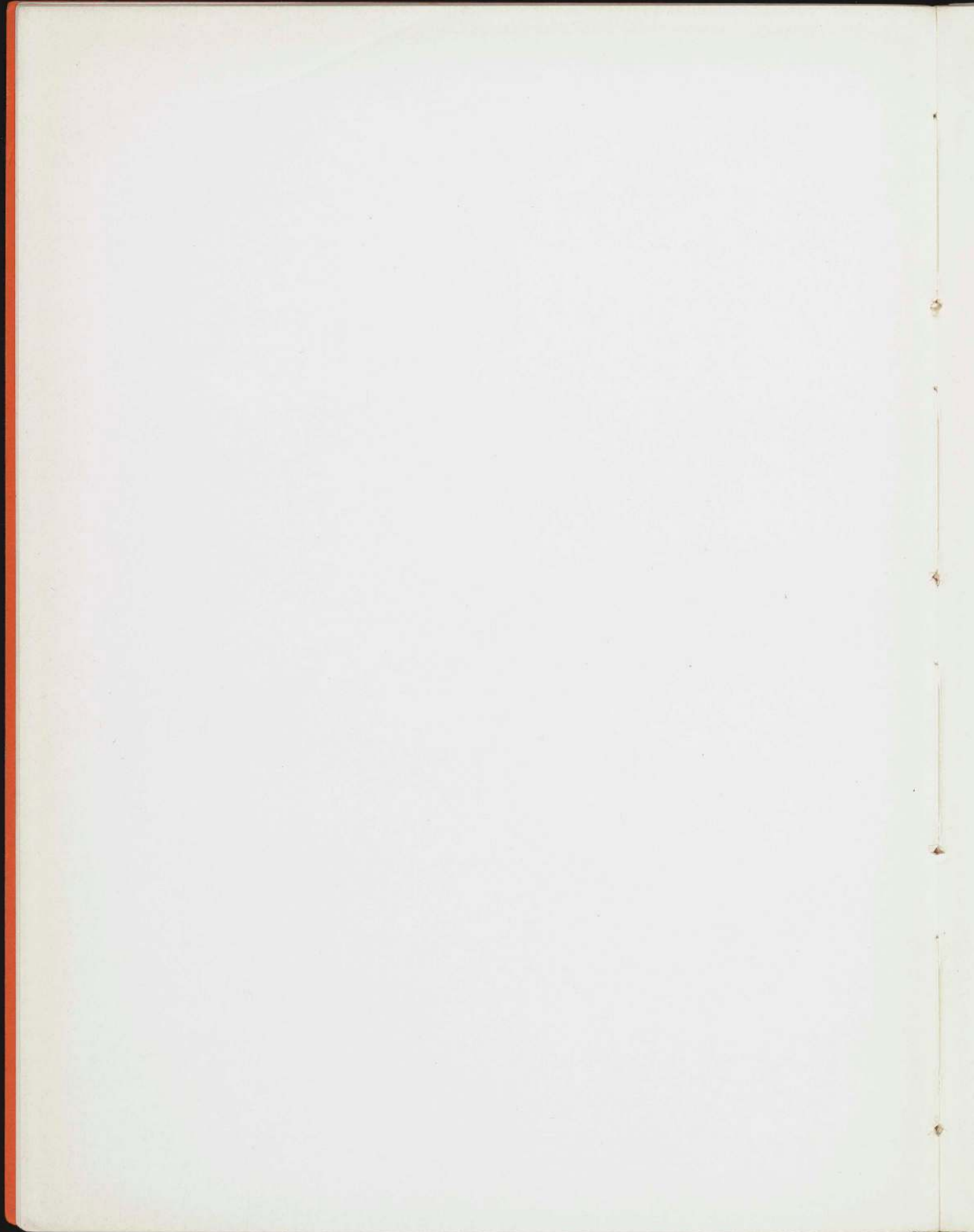
American sculpture except by younger artists has up till now been somewhat neglected by the Museum. The present Exhibition will therefore be of especial importance to those interested in the work of American sculptors.

It was originally intended to include work by Thomas Benton and Maurice Sterne. Mr. Benton, however, is devoting himself to mural painting and prefers not to exhibit his canvases while Mr. Sterne's recent sculpture is in Italy and could not be secured in time for the present exhibition. It is hoped that their work will be exhibited in the future.

A. H. B., JR.



CATALOG



## PAINTINGS

An asterisk before a number indicates that the work is illustrated by a plate bearing the same number.

### GIFFORD BEAL

*Born in New York in 1879. Pupil of Chase at Shinnecock and of Ranger at the Art Students' League. Lives in New York City*

- \*<sub>1</sub> FISHERMAN'S DAUGHTER, 1930  
Collection Kraushaar Galleries, New York
- 2 THE POLKA FROM *DIE FLEDERMAUS*, 1930  
Collection Kraushaar Galleries, New York
- 3 ROCKPORT QUARRY, 1930  
Collection Kraushaar Galleries, New York

### PAUL BURLIN

*Born in New York in 1886. Studied in England and Paris. Spent much time in the South West of the United States. Has lived since 1921 in Paris*

- 4 FLOWERS, 1927  
Collection Dr. F. H. Hirschland, New York
- \*<sub>5</sub> HORSES IN STABLE, about 1928  
Collection Mrs. M. deSilver, New York
- 6 HILLS AND HOUSES  
Collection Jacques Seligmann and Company, New York and Paris

### VINCENT CANADÉ

*Born in Alvenese, Italy, in 1879. Largely self taught. Lives in New York*

- 7 DOUBLE SELF-PORTRAIT, about 1919  
Private Collection E. Weyhe, New York
- \*<sub>8</sub> THE ARTIST'S FAMILY, about 1924  
Collection Weyhe Gallery, New York

- 9 ROOF TOPS, 1927  
Collection Weyhe Gallery, New York

### ARTHUR CARLES

*Born in Philadelphia in 1882. Studied at Pennsylvania Academy of Fine Arts. Lives in Philadelphia*

- 10 LANDSCAPE, 1912  
Collection Maurice J. Speiser, Philadelphia
- 11 NUDE, 1922  
Collection Herbert A. Speiser, Philadelphia
- \*12 CALLA LILIES, 1927  
Collection Harry Sundheim, Philadelphia

### JAMES CHAPIN

*Born in West Orange, New Jersey, in 1887. Studied at Cooper Union and Art Students' League. Lives in New Jersey*

- 13 ALINE McMAHON  
Private Collection Frank K. M. Rehn, New York
- 14 THE PRETZEL MAN, 1929  
Collection the Artist
- \*15 BOXER AND HIS MANAGER, 1930  
Collection Frank K. M. Rehn Gallery, New York

### MERTON CLIVETTE

*Born on the S.S. Enterprise in the Indian Ocean in 1848. Studied at the Art Students' League. Formerly professional acrobat, magician, and publicity agent. Lives in New York*

- \*16 JUNGLE ARGUMENT  
Collection Gustave Nassauer, New York
- 17 THE BARONESS  
Collection Gustave Nassauer, New York

18 SEATTLE SQUAW

Collection Gustave Nassauer, New York

ANDREW DASBURG

*Born of American Parents in Paris in 1887. Pupil of Cox, Harrison and Henri in New York. Lives in Santa Fe, New Mexico*

19 LANDSCAPE, LAMY, NEW MEXICO, 1927

Collection Frank K. M. Rehn Gallery, New York

\*20 POPPIES

Collection Mr. and Mrs. Jay H. Barnum, Norwalk, Connecticut

21 MERGANSER, 1930

Private Collection, New York

STUART DAVIS

*Born in Philadelphia in 1894. Studied with Henri. Lived for a time in Paris but now lives in New York*

22 TABLE, about 1925

Collection Downtown Gallery New York

23 PLACE DES VOSGES, 1929

Private Collection, New York

\*24 SUMMER LANDSCAPE, 1930

Collection Downtown Gallery, New York

PAUL DOUGHERTY

*Born in Brooklyn in 1877. Studied alone, Paris, London, Florence, Venice, and Munich. Lives at present in California*

25 FLOWERS, about 1925

Private Collection, New York

26 CAÑON AFTER RAIN, 1930

Collection the Artist

\*27 SHADOWED MESA, 1930

Collection the Artist

## ARTHUR G. DOVE

*Born in Canandaigua, New York, in 1880. Worked at first as an illustrator. Lives at Halesite, Long Island*

- \*28 DISTRACTION, 1929  
Collection An American Place, New York
- 29 COLORED BARGEMAN, 1929  
Collection An American Place, New York
- 30 HARBOR IN LIGHT, 1929  
Collection An American Place, New York

## GUY PENE DUBOIS

*Born in Brooklyn in 1884. Pupil of Chase, DuMond, and Henri. Has lived in Paris recently; at present in New York*

- 31 RESTAURANT (1), 1924  
The Chester Dale Collection, New York
- 32 RESTAURANT (2), 1924  
The Chester Dale Collection, New York
- \*33 CAFÉ BREAKFAST, 1929  
Collection Kraushaar Galleries, New York

## ERNEST FIENE

*Born in the Rhineland, Germany, in 1894. Studied at the National Academy of Design. Lives in Woodstock, N. Y.*

- 34 HUDSON RIVER BOAT, 1929  
Collection Frank K. M. Rehn Gallery, New York
- \*35 RAZING BUILDINGS, 49TH STREET, 1930  
Collection Frank K. M. Rehn Gallery, New York
- 36 SHOW GIRL, No. 2, 1930  
Collection Frank K. M. Rehn Gallery, New York

## ARNOLD FRIEDMAN

*Born in New York in 1879. Studied at the Art Students' League and under Robert Henri. Lives at Corona, Long Island, N. Y.*

- 37 FATHER X, 1927  
Collection Dr. Nathan Wolf, New York
- \*38 WHITE PONY, 1928  
Collection Mrs. Charles J. Liebman, New York
- 39 STILL LIFE, 1929  
Collection Downtown Gallery, New York

## WILLIAM GLACKENS

*Born in Philadelphia in 1870. Studied at Pennsylvania Academy of Art. Lives in New York*

- \*40 DREAM RIDE, 1923  
Collection Kraushaar Galleries, New York
- 41 FLOWERS, 1930  
Collection Kraushaar Galleries, New York

## MARSDEN HARTLEY

*Born in Lewiston, Maine, in 1878. Studied at Cleveland School of Fine Arts and at the Chase School in New York. Studied at the National Academy of Design under Cox, Chase, DuMond, and F. Luis Mora. Has worked in Germany and France. Lives in New York*

- 42 PORTRAIT OF MY FRIEND, 1914  
Collection An American Place, New York
- 43 RUBBER PLANT, 1922  
Collection Paul Rosenfeld, New York
- \*44 GRAPES, 1927  
Collection Phillips Memorial Gallery, Washington

## CHILDE HASSAM

*Born in Boston in 1859. Studied in Paris with Boulangier and Lefèvre. Lives in New York*

- 45 VAL DE GRACE, 1888  
Collection Joel T. Howard, Dallas, Texas

\*46 SPRING IN WEST 78TH STREET, 1905  
Private Collection, New York

47 FLAGS ON 57TH STREET, WINTER, 1918  
Collection the Artist

### JOHN KANE

*Born of Irish Parents in West Calder, Scotland, in 1859. Came to America in 1880. No formal art training. Earns his living as a house-painter. Lives in Pittsburgh*

\*48 HOMESTEAD  
Collection the Artist

49 ESCAPE  
Collection the Artist

50 SQUIRREL HILL FARM  
Collection Edward Duff Balken, Pittsburgh

### MORRIS KANTOR

*Born in Russia in 1896. Came to United States when thirteen years old. Pupil of Homer Boss in New York. Lives in New York*

51 ODE TO THE ANTIQUE, 1929  
Collection Frank K. M. Rehn Gallery, New York

\*52 OUT THE WINDOW, 1930  
Collection Frank K. M. Rehn Gallery, New York

53 OFF SHORE, 1930  
Collection Frank K. M. Rehn Gallery, New York

### CARL KNATHS

*Born in Eau Claire, Wisconsin, in 1891. Studied at the Art Institute of Chicago. Lives in Provincetown, Massachusetts*

\*54 COCK AND GLOVE, 1927  
Collection Phillips Memorial Gallery, Washington

55 THE POND, 1930. *Watercolor*  
Collection Daniel Gallery, New York

56 HOUSES, 1930. *Watercolor*  
Collection Daniel Gallery, New York

### BENJAMIN KOPMAN

*Born in Russia in 1887. Studied under Jones, Maynard and Ward at the National Academy of Design*

57 PORTRAIT  
Collection Alfred Stieglitz, New York

58 HEAD, 1929  
Collection Sidney Janowitz, New York

\*59 LANDSCAPE, 1930  
Collection J. B. Neumann, New York

### LEON KROLL

*Born in New York in 1884. Studied at the Art Students' League, the National Academy of Design, and under Laurens in Paris. Lives in New York*

60 CENTRAL PARK, 1923  
Collection Ralph Pulitzer, New York

61 SERENA, 1930  
Collection Frank K. M. Rehn Gallery, New York

\*62 FOLLY COVE, 1930  
Collection Frank K. M. Rehn Gallery, New York

### SIDNEY LAUFMAN

*Born in Cleveland in 1891. Studied at the Art Institute of Chicago, 1912-1916; Art Students' League, 1916-1918; Paris 1920-1930*

\*63 LANDSCAPE, 1930  
Collection the Artist

- 64 STILL LIFE, 1930  
Collection the Artist

### GEORGE BENJAMIN LUKS

*Born in Williamsport, Pennsylvania, in 1867. Studied at Pennsylvania Academy and later in Düsseldorf, Paris, and London*

- 65 OTIS SKINNER AS COLONEL PHILIPPE BRIDAU IN "THE HONOR OF THE FAMILY"  
Collection Phillips Memorial Gallery, Washington
- 66 SATURDAY NIGHT, 1925  
Collection Frank K. M. Rehn Gallery, New York
- \*67 ELEANOR, 1927  
Collection Frank K. M. Rehn Gallery, New York

### HENRY LEE McFEE

*Born in St. Louis in 1886. Studied at the Art Students' League School in Woodstock, N. Y. Lives in Woodstock, N. Y.*

- 68 MAN IN HIGH HAT, SELF PORTRAIT, 1925  
Collection Albright Art Gallery, Buffalo
- \*69 LEAVES, 1927  
Collection Edward W. Root, Clinton, New York
- 70 STILL-LIFE WITH A BLUE BOWL, 1928  
Collection Frank K. M. Rehn Gallery, New York

### BOARDMAN ROBINSON

*Born in Somerset, Nova Scotia, in 1876. Studied at Massachusetts Normal Art School, and in Paris at the Academie Colarossi, and the École des Beaux-Arts. Lives in New York*

- 71 "SERBIA, MY DEAR MOTHER," 1916. Watercolor  
Illustration for John Reed's *The War in Eastern Europe*  
Collection Mrs. Malcolm L. McBride, Cleveland

72 THE WOMAN OF SAMARIA, 1921

Private Collection, New York

\*73 SERMON ON THE MOUNT, 1926. *Oil over tempera on plaster*

Collection Eugene Schoen, Inc., New York

### HENRY SCHNAKENBERG

*Born in New Brighton, New York, in 1892. Studied with Kenneth Hayes Miller. Lives in New York*

\*74 STILL-LIFE WITH A RED BANDANA, 1929

Collection Kraushaar Galleries, New York

75 WHEATFIELD

Collection Kraushaar Galleries, New York

### CHARLES SHEELER

*Born in Philadelphia in 1883. Studied at the Pennsylvania Academy of Fine Arts, and under Chase in New York. Lives in New York*

76 PENNSYLVANIA BARN, 1922. *Tempera and crayon*

Collection Mrs. Juliana R. Force, New York

77 PERTAINING TO YACHTS AND YACHTING, 1923

Collection Earl Horter, Philadelphia

78 PEARSON A PINK PLATE, 1924. *Crayon*

Collection Daniel Gallery, New York

79 UPPER DECK, 1929

Collection Downtown Gallery, New York

\*80 AMERICAN LANDSCAPE, 1930

Collection the Artist

### NILES SPENCER

*Born in Pawtucket, Rhode Island, in 1893. Studied at Rhode Island School of Design, and in New York under Henri and Bellows. Lives in New York*

81 INTERIOR, 1925

Collection Edward S. Greenbaum, New York

82 ORDNANCE DOCK, BERMUDA, 1928  
Collection Mr. and Mrs. Samuel A. Lewisohn, New York

\*83 WHITE FACTORY, 1929  
Collection Daniel Gallery, New York

### AUGUSTUS VINCENT TACK

*Born in Pittsburgh in 1870. Studied with Merson in Paris, and with Mowbray and LaFarge in New York*

\*84 LARGO, 1928  
Collection Phillips Memorial Gallery, Washington

85 FLIGHT, 1930  
Collection Phillips Memorial Gallery, Washington

86 FAR REACHES, 1930  
Collection Phillips Memorial Gallery, Washington

### MARK TOBEY

*Born in Wisconsin. Has worked in Chicago, New York, and Seattle where he now lives*

\*87 AMERICAN LANDSCAPE, 1928  
Collection the Artist

88 PORTRAIT OF A POET, 1928  
Collection the Artist

89 VICTORY, 1928  
Collection the Artist

## SCULPTORS

*Note:* In order to facilitate the arrangement of the sculpture more has been borrowed than can actually be shown.

### ALEXANDER CALDER

*Born in Philadelphia in 1899. Studied at the Art Students' League, New York. Lives in Paris*

- \*90 COW. *Wood*  
Collection George D. Pratt, Jr., Bridgewater, Connecticut
- 91 STOOPING GIRL. *Wood*  
Collection the Artist, New York
- 92 MAN. *Wood*  
Collection J. B. Neumann, New York
- 93 ACROBATS. *Wood*  
Collection J. B. Neumann, New York

### HUNT DIEDERICH

*Born in Nuremberg in 1884. Studied in Europe. Lives in New York*

- \*94 WRESTLERS. *Stone*  
Collection Downtown Gallery, New York
- 95 SPANISH HORSEMAN. *Bronze*  
Collection Dr. and Mrs. James B. Murphy, New York

### ANNA GLENNY

*Born in Buffalo in 1888. Studied with Bela Pratt at the Boston Museum of Fine Arts, 1908, and with Bourdelle in Paris, 1909-11. Lives in Buffalo*

- 96 ABANDONED, 1927. *Bronze*  
Private Collection, New York
- 97 TORSO, 1927. *Bronze*  
Private Collection, New York

- 98 HEAD OF CHINESE WOMAN, 1928. *Bronze*  
Private Collection, New York
- 99 HALLELUJAH, 1929. *Bronze*  
Private Collection, New York
- 100 NEGRESS, 1930. *Bronze*  
Private Collection, New York
- 101 PORTRAIT OF MRS. WOLCOTT, 1930. *Bronze*  
Private Collection, New York
- \*102 HEAD OF KATHARINE CORNELL, 1930. *Bronze*  
Private Collection, New York
- 103 PORTRAIT OF FRANCIS BANGS, 1930. *Bronze*  
Private Collection, New York

#### GASTON LACHAISE

*Born in Paris in 1882. Studied at Ecole des Beaux-Arts under Gabriel Jules Thomas. Lives in New York*

- 104 WOMAN, 1912. *Bronze*  
Collection John A. Dunbar, New York
- \*105 HEAD, 1922. *Bronze*  
Collection Mrs. Charles J. Liebman, New York
- 106 WOMAN WALKING, 1922. *Bronze*  
Private Collection, New York
- 107 SEATED WOMAN, 1924. *Bronze*  
Collection Miss Marjorie Patterson, New York
- 107A TORSO. *Bronze*  
Collection Weyhe Gallery, New York
- 108 HEAD, 1925. *Nickel*  
Collection Kraushaar Galleries, New York

- 109 SLEEPING SEA GULL, 1925. *Alabaster*  
Collection Kraushaar Galleries, New York
- 110 DOLPHIN FOUNTAIN, 1925. *Bronze*  
Collection Kraushaar Galleries, New York
- 111 MASK, 1925. *Nickel*  
Collection John F. Kraushaar, New York
- 112 PENGUIN, 1925. *Bronze*  
Collection Mrs. W. Murray Crane, New York
- 113 LA MONTAGNE. *Bronze*  
Collection Weyhe Gallery, New York
- 113A WOMAN, 1926. *Bronze*  
Collection Paul Rosenfeld, New York
- 114 JOHN MARIN, 1927. *Bronze*  
Collection Weyhe Gallery, New York
- 115 MAN, 1930  
Collection the Artist

## ROBERT LAURENT

*Born in Concarneau, France, in 1890. Studied with Hamilton Easter Field and Maurice Sterne. Lives in New York*

- 116 HEAD, 1926. *Alabaster*  
Collection Downtown Gallery, New York
- 117 HEAD OF MIMI, 1927. *Plaster*  
Collection the Artist
- 118 STANDING FIGURE, 1927. *Wood*  
Collection Downtown Gallery, New York
- 119 RECLINING NUDE, 1927. *Alabaster*  
Collection The Brooklyn Museum of Art, Brooklyn
- \*120 SEATED FIGURE, 1928. *Alabaster*  
Collection John A. Dunbar, New York

- 121 STANDING FIGURE, 1930. *Bronze*  
Collection Downtown Gallery, New York

### DUDLEY VAIL TALCOTT

*Born in Hartford, Connecticut, in 1899. Studied very briefly at Yale School of Fine Arts, 1919. Paris, 1921-25. Scandinavia and subartic regions, 1924-29. Lives at present in New York*

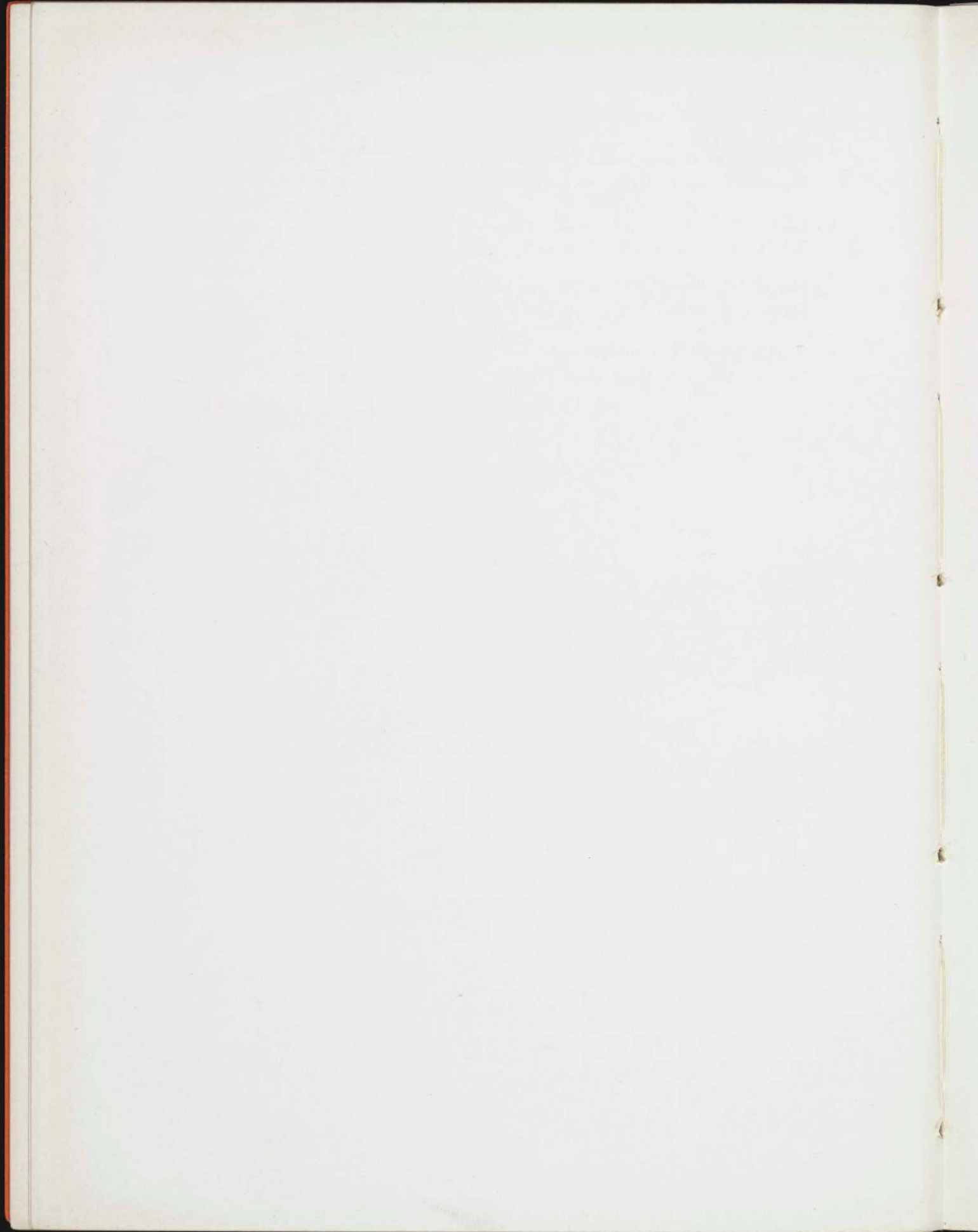
- 122 SIX-DAY CYCLIST, 1926. *Bronze*  
Collection the Artist
- 123 CHILD'S RESTAURANT WAITRESS, 1928. *Wood*  
Collection the Artist
- \*124 WRESTLER, 1929. *Aluminum*  
Collection the Artist
- 125 WOMAN WITH A WOODEN SPOON, 1929. *Tin*  
Collection the Artist
- 126 GENEROUS GIRL, 1930. *Plaster*  
Collection Murdock Pemberton, New York

### WILLIAM ZORACH

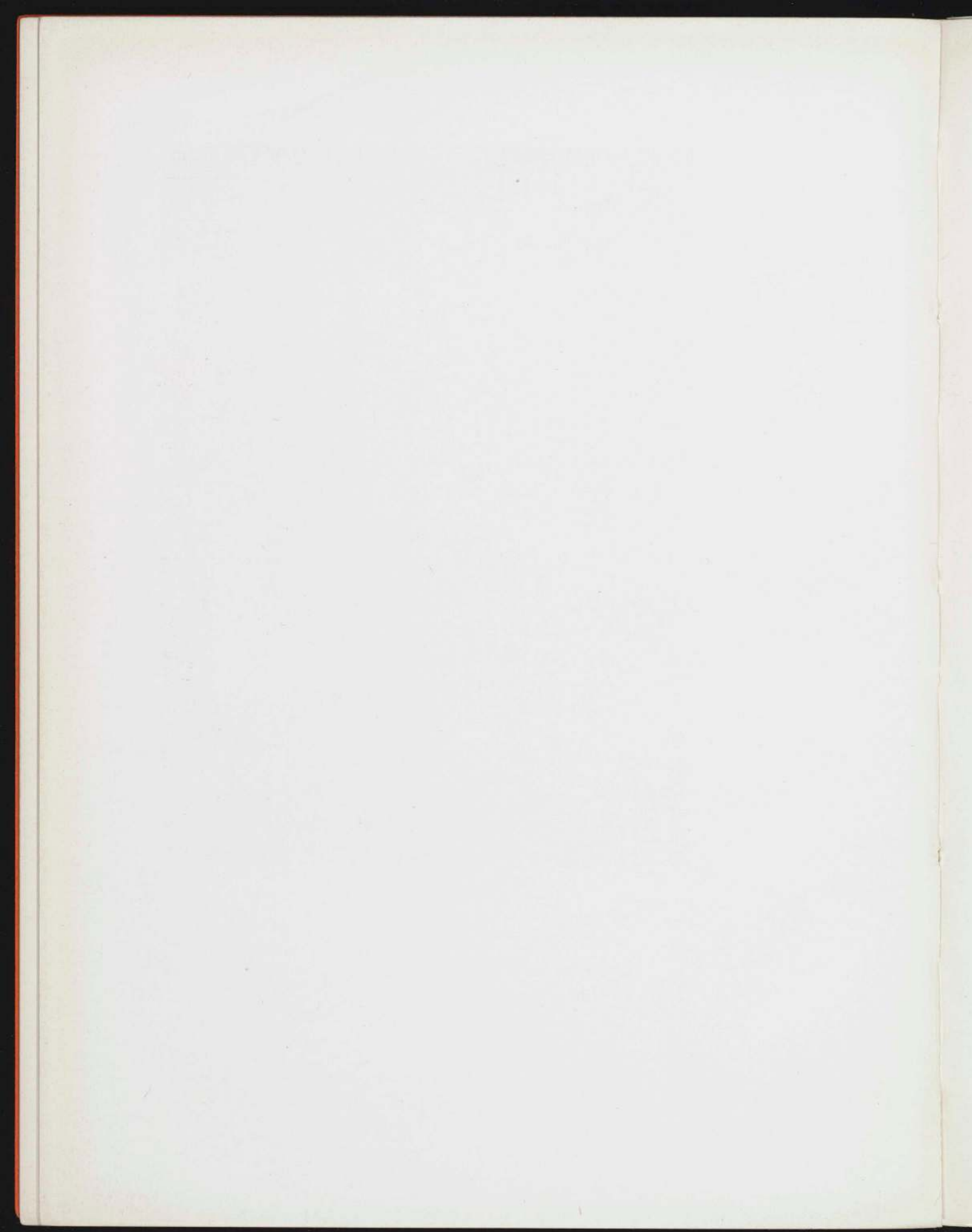
*Born in Russia in 1887. Studied at the National Academy of Design in New York, and in Paris. Lives in New York*

- 127 BABY, 1918. *Bronze*  
Collection Downtown Gallery, New York
- 128 KIDDY KAR, 1923. *Rosewood*  
Collection Downtown Gallery, New York
- \*129 WOMAN, about 1924. *Lignum vitae*.  
Collection Frank Crowninshield, New York
- 130 HEAD OF A CHILD, 1924. *Brass*  
Collection Downtown Gallery, New York

- 131 PANELS, 1925. *Brazilian walnut*  
Collection Downtown Gallery, New York
- 132 CHILD AND CAT, 1926. *Tennessee marble*  
Collection Downtown Gallery, New York
- 133 PORTRAIT OF ARTIST'S WIFE, 1926. *Tennessee marble*  
Collection Downtown Gallery, New York
- 134 SEATED FIGURE, 1930. *Bluestone*  
Collection Downtown Gallery, New York



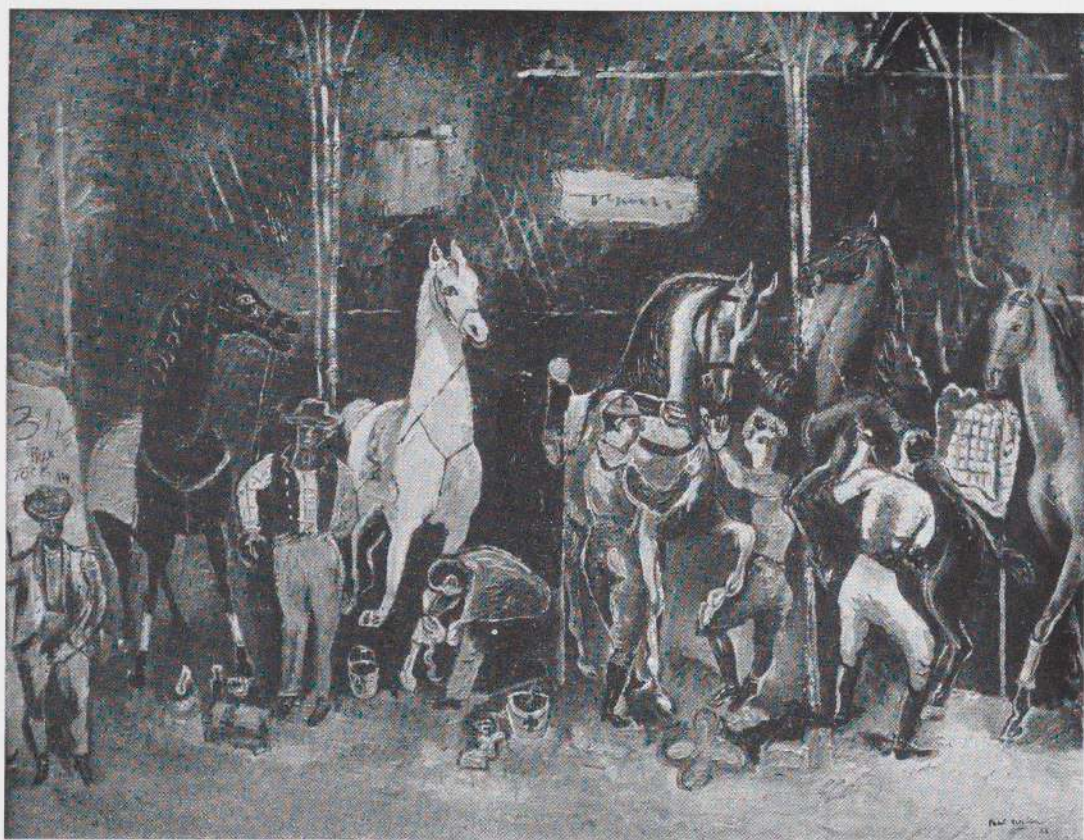
ILLUSTRATIONS





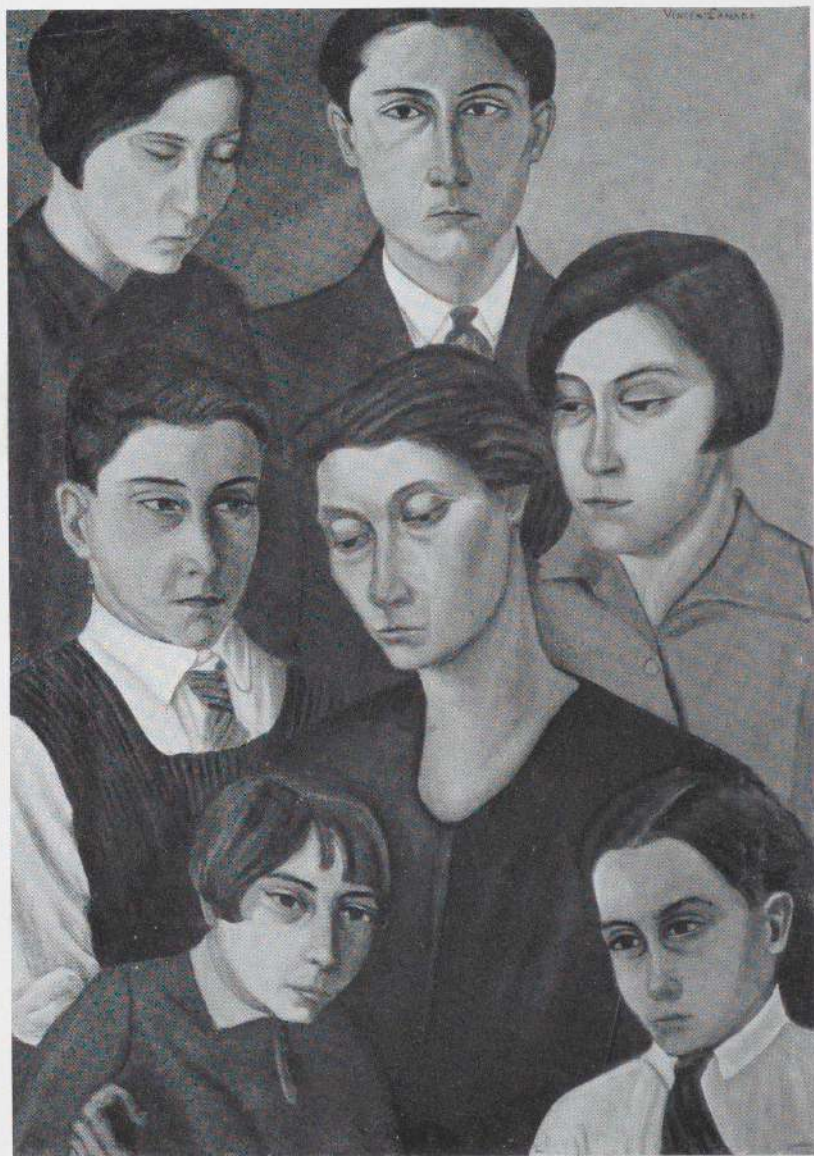
BEAL 1

FISHERMAN'S DAUGHTER, 1930. 24 x 18 inches  
Collection Kraushaar Galleries, New York



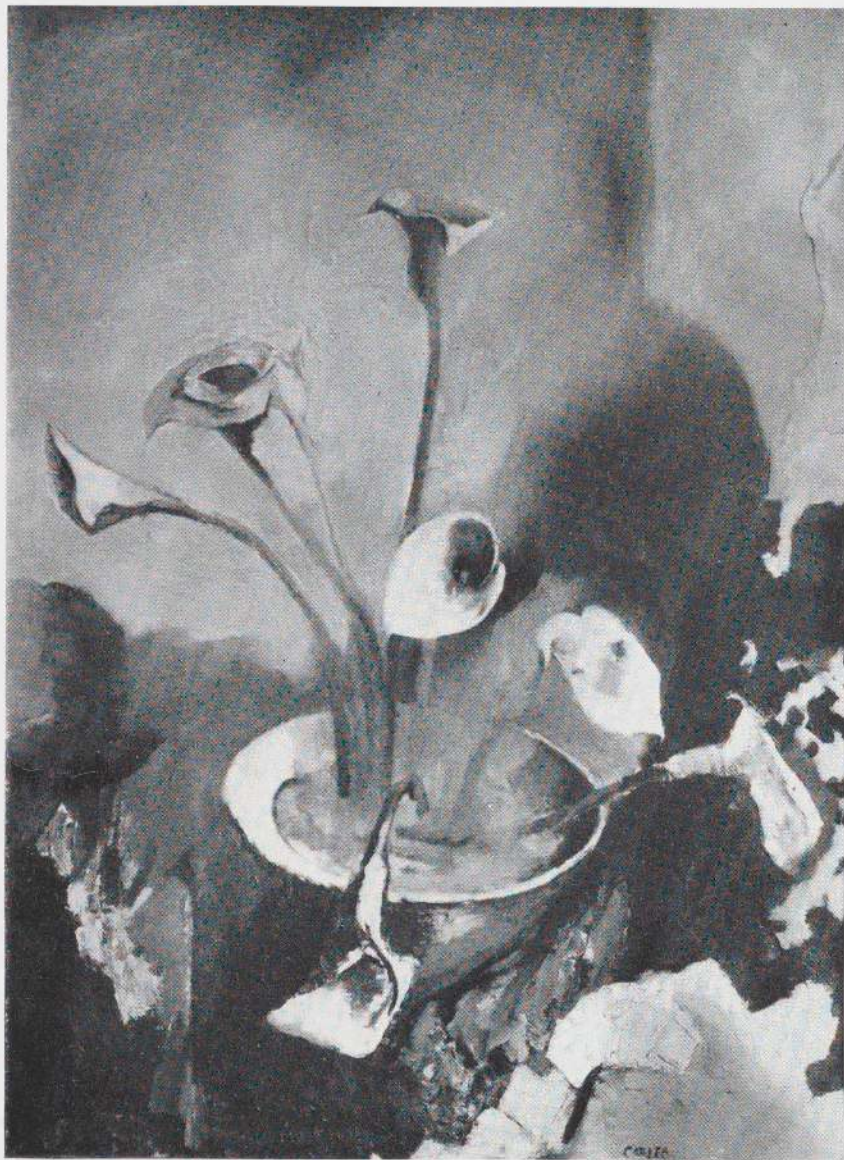
5 BURLIN

HORSES IN STABLE, about 1928. 30 x 38½ inches  
Collection Mrs. M. deSilver, New York



CANADÉ 8

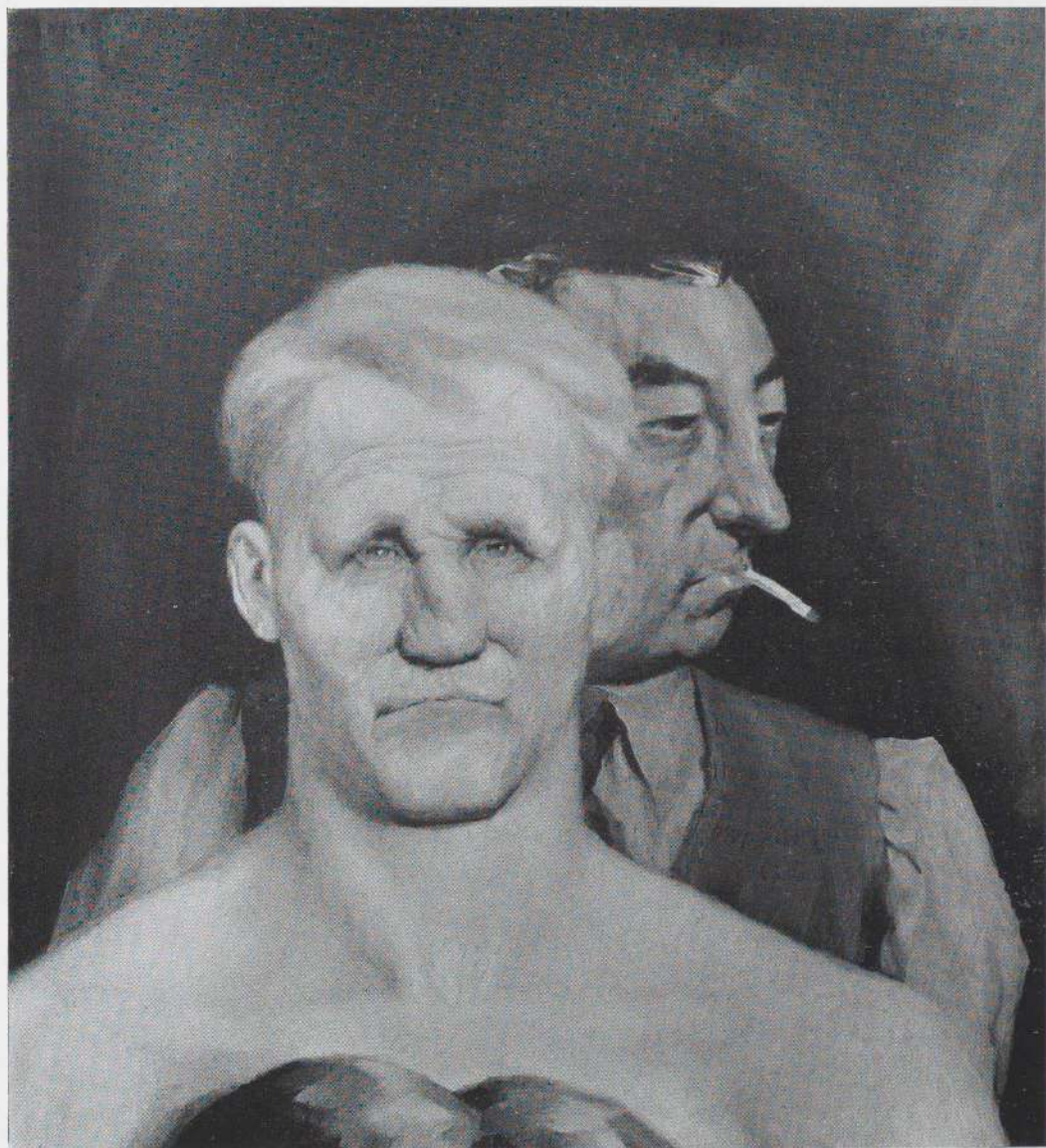
THE ARTIST'S FAMILY, about 1924. 29½ x 21½ inches  
Collection Weyhe Gallery, New York



12 CARLES

CALLA LILIES, 1927

Collection Harry Sundheim, Philadelphia



CHAPIN 15

BOXER AND HIS MANAGER, 1930. 21 x 91 inches  
Collection Frank K. M. Rehn Gallery, New York



16 CLIVETTE

JUNGLE ARGUMENT, 46 x 36 inches

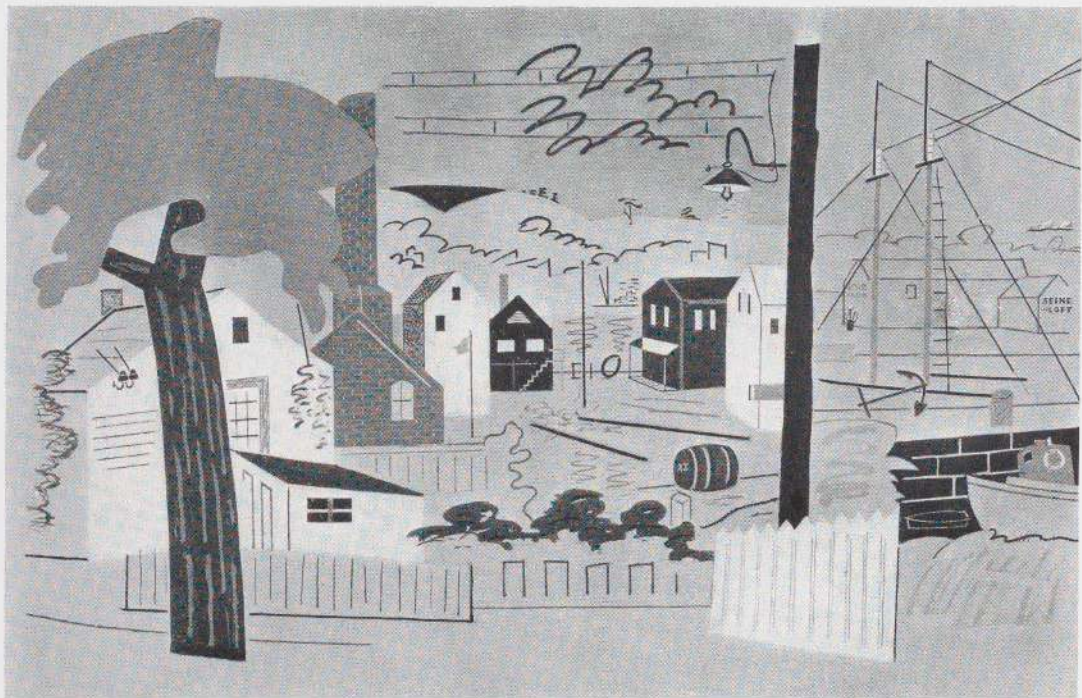
Collection Gustave Nassauer, New York



DASBURG 20

POPPIES. 40 x 26 inches

Collection Mr. and Mrs. Jay H. Barnum, Norwalk, Connecticut



24 DAVIS

SUMMER LANDSCAPE, 1930. 42 x 29½ inches  
Collection Downtown Gallery, New York



DOUGHERTY 27  
SHADOWED MESA, 1930. 36 x 48 inches  
Collection the Artist



28 DOVE

DISTRACTION, 1929. 22 x 30 inches

Collection An American Place, New York



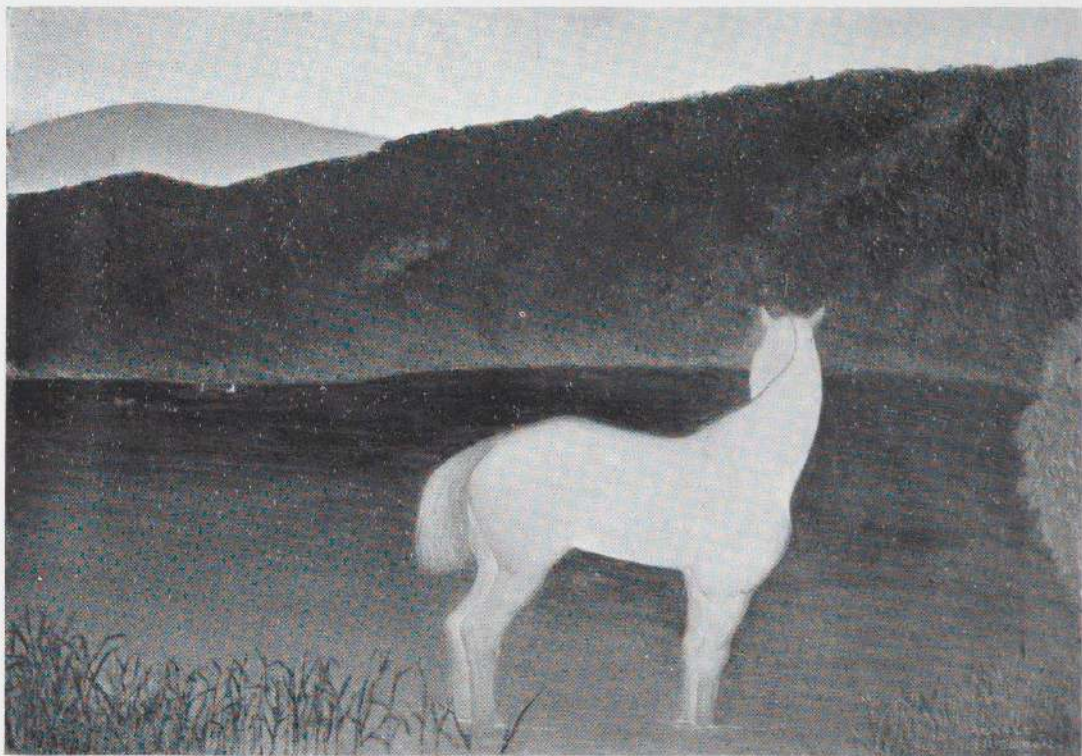
DUBOIS 33

CAFÉ BREAKFAST, 1929. 36 $\frac{1}{8}$  x 32 inches  
Collection Kraushaar Galleries, New York



35 FIENE

RAZING BUILDINGS, 49TH STREET, 1930. 26 x 36 inches  
Collection Frank K. M. Rehn Gallery, New York



FRIEDMAN 38  
WHITE PONY, 1928. 14 x 19½ inches  
Collection Mrs. Charles J. Liebman, New York



40 GLACKENS

DREAM RIDE, 1923. 48 x 54 inches

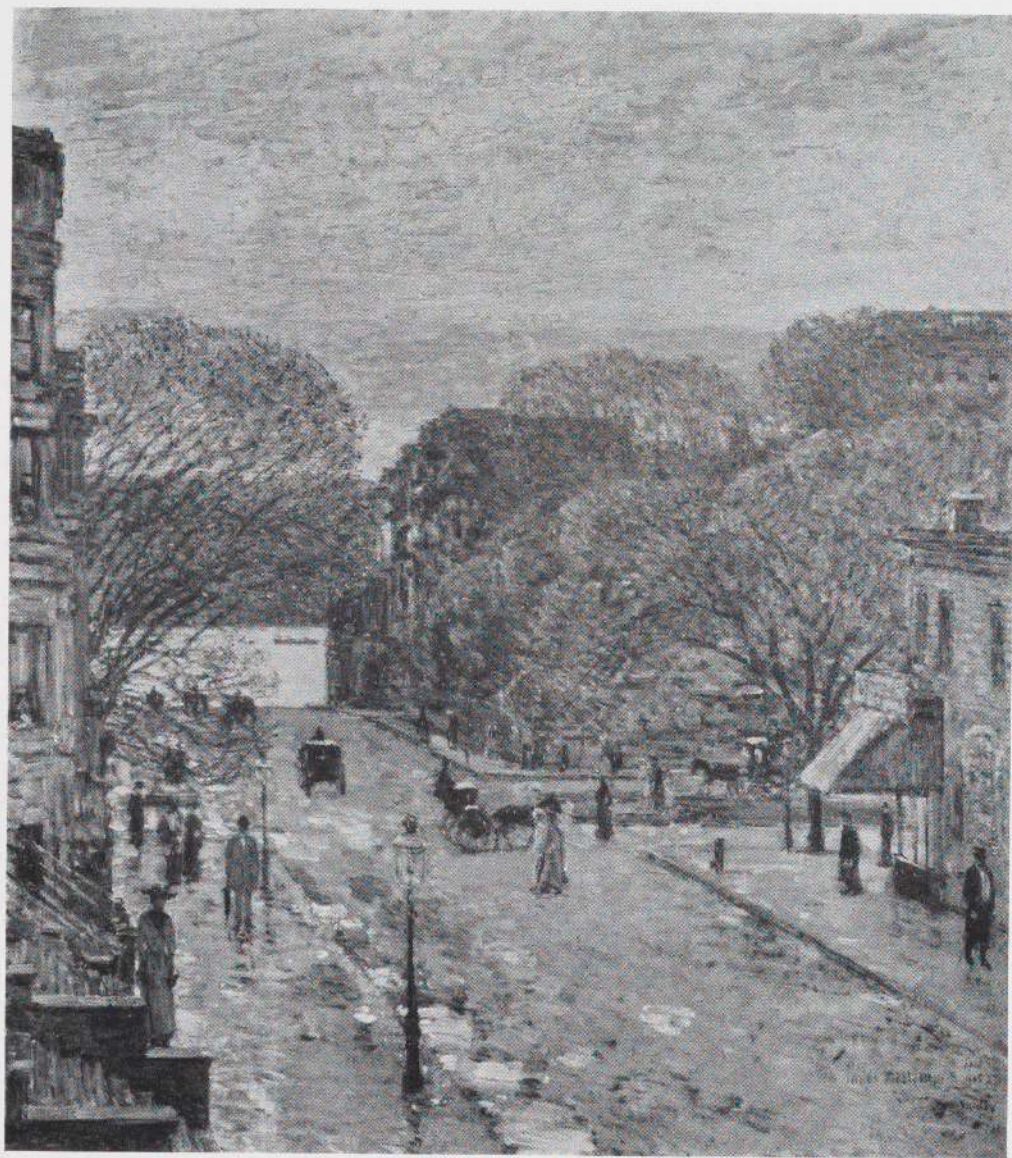
Collection Kraushaar Galleries, New York



HARTLEY 44

GRAPES, 1927. 20 x 23 $\frac{3}{4}$  inches

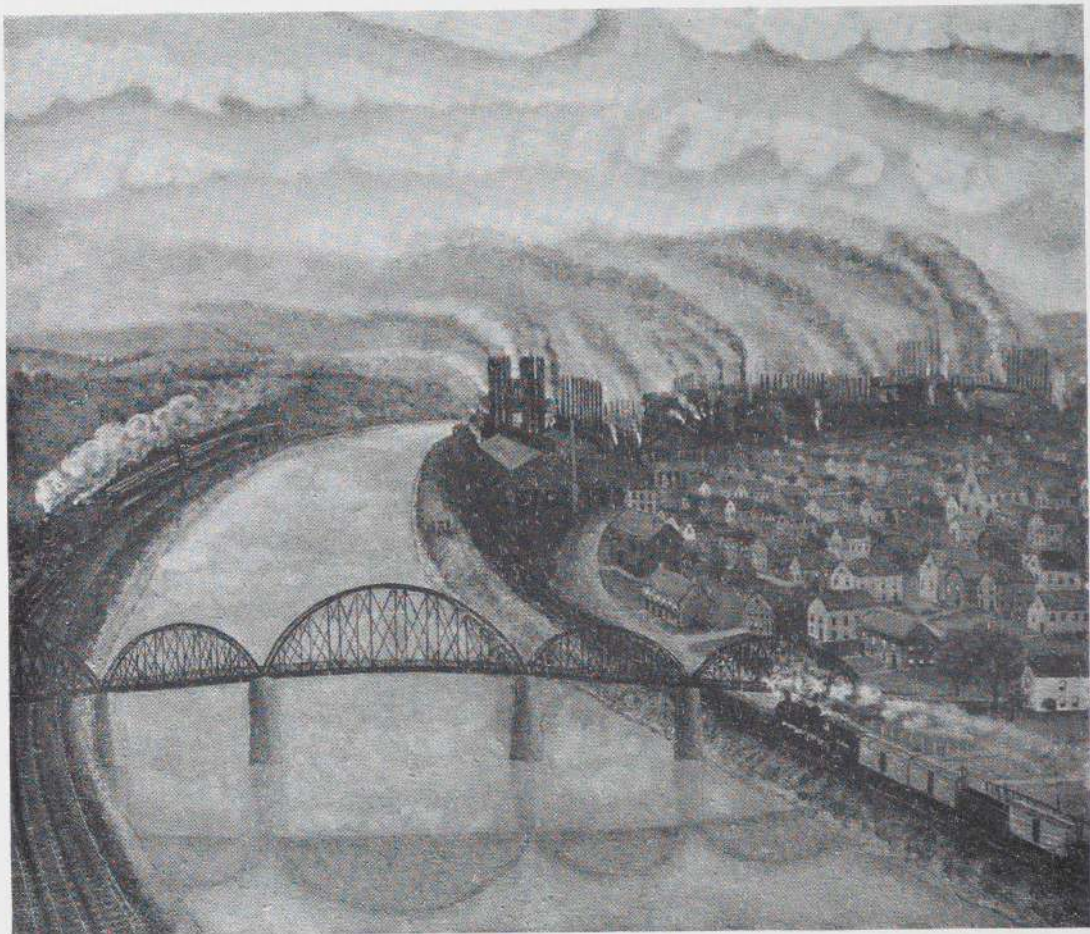
Collection Phillips Memorial Gallery, Washington



46 HASSAM

SPRING IN WEST 78TH STREET, 1905

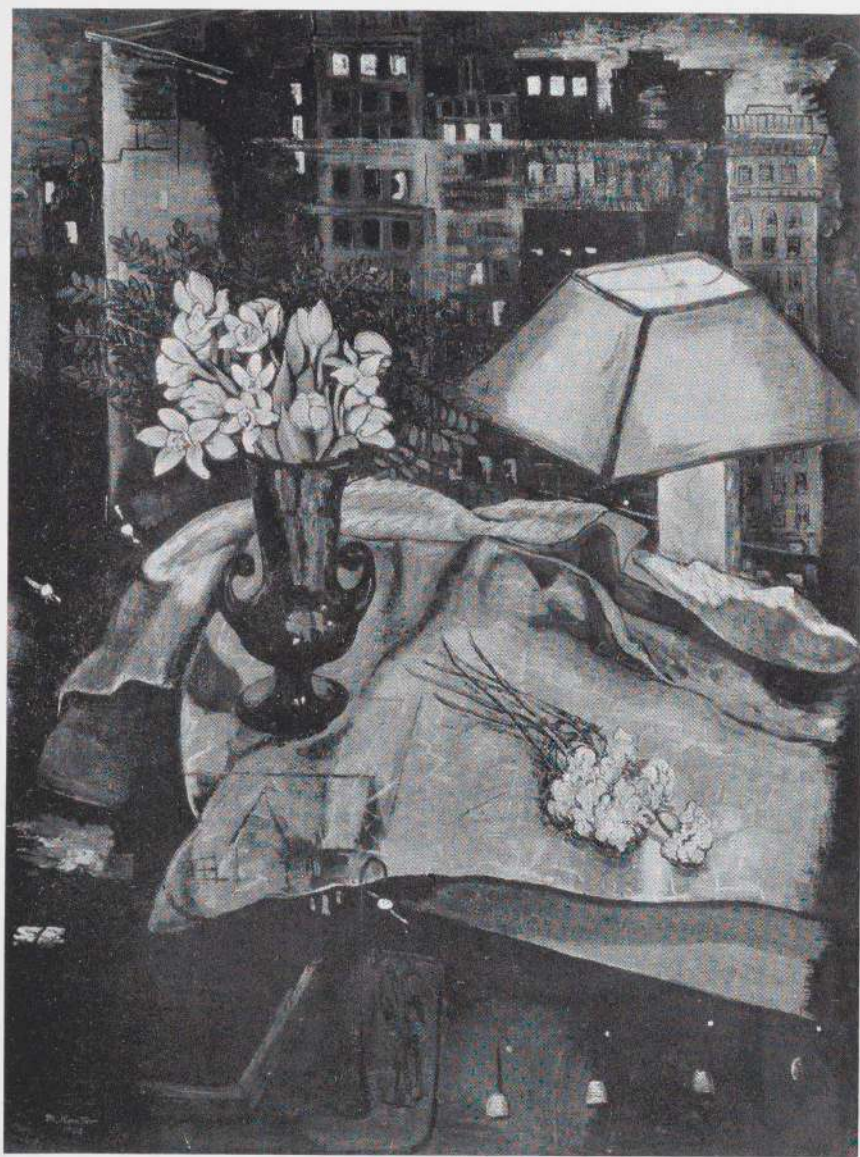
Private Collection, New York



KANE 48

HOMESTEAD. 24 x 27 inches

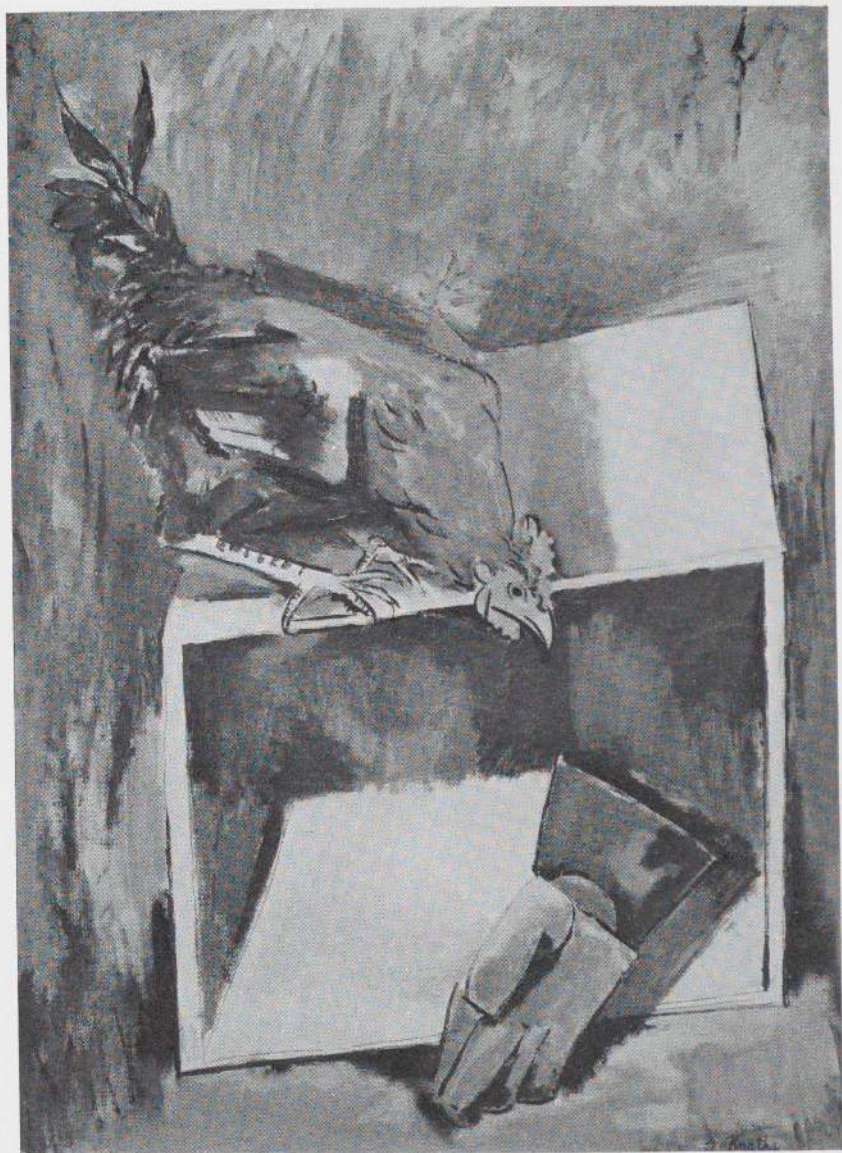
Collection the Artist



52 KANTOR

OUT OF THE WINDOW, 1930. 42 x 32 inches

Collection Frank K. M. Rehn Gallery, New York



KNATHS 54

COCK AND GLOVE, 1927. 35 x 26 inches  
Collection Phillips Memorial Gallery, Washington



59 KOPMAN

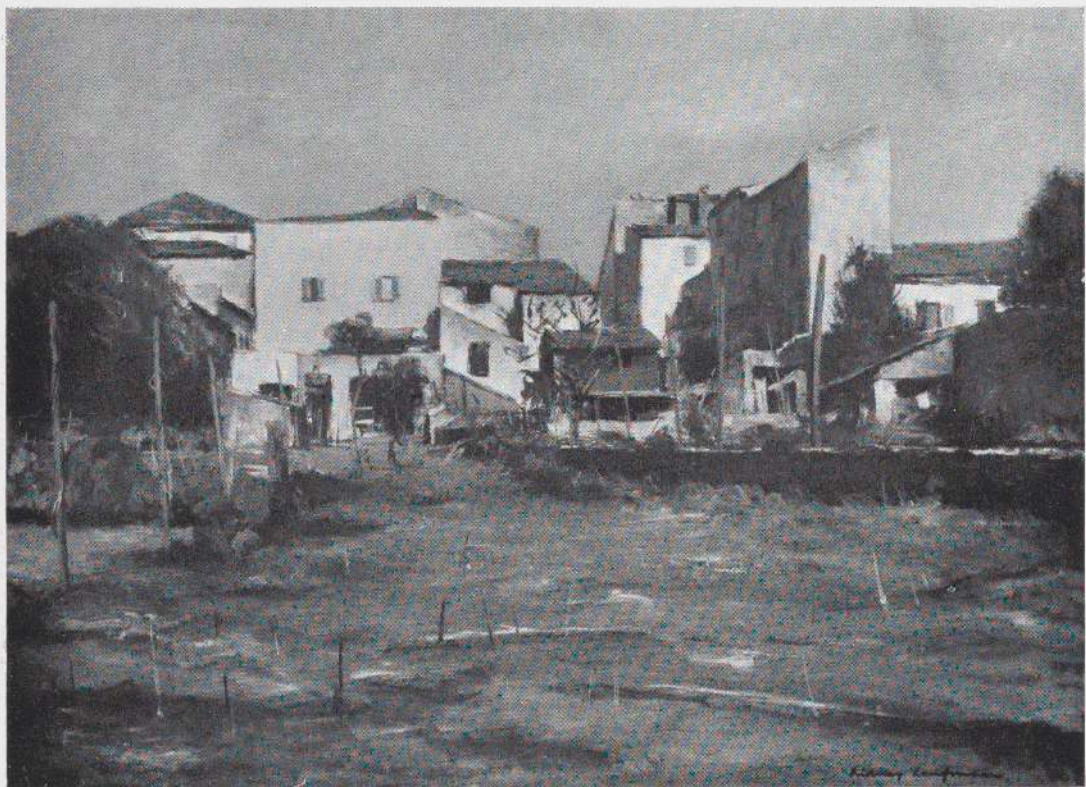
LANDSCAPE, 1930. 23 x 36 inches

Collection J. B. Neumann, New York



KROLL 62

FOLLY COVE, 1930. 26 x 42 inches  
Collection Frank K. M. Rehn Gallery, New York



63 LAUFMAN

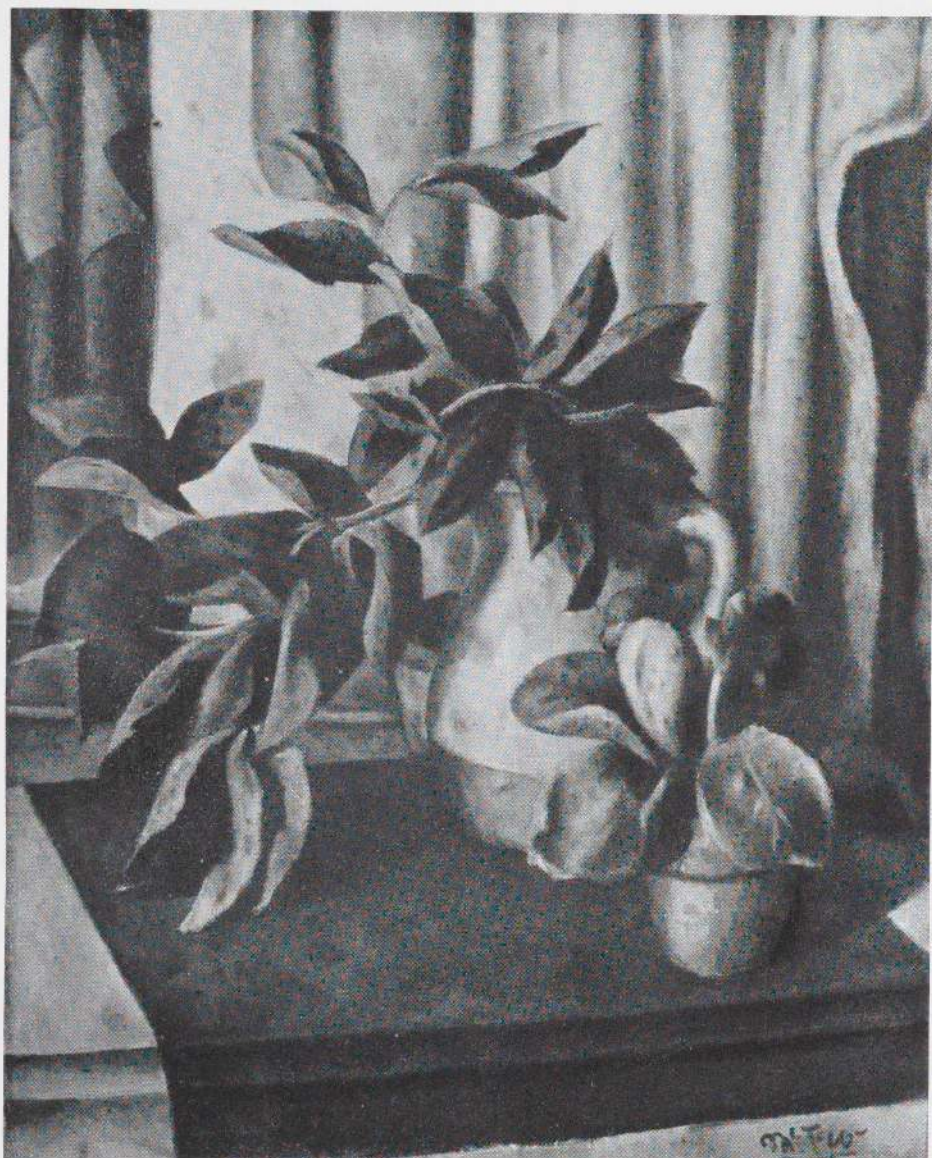
LANDSCAPE, 1930. 28½ x 39¼ inches

Collection the Artist



LUKS 67

ELEANOR, 1927. 30 x 25 inches  
Collection Frank K. M. Rehn Gallery, New York



69 McFEE

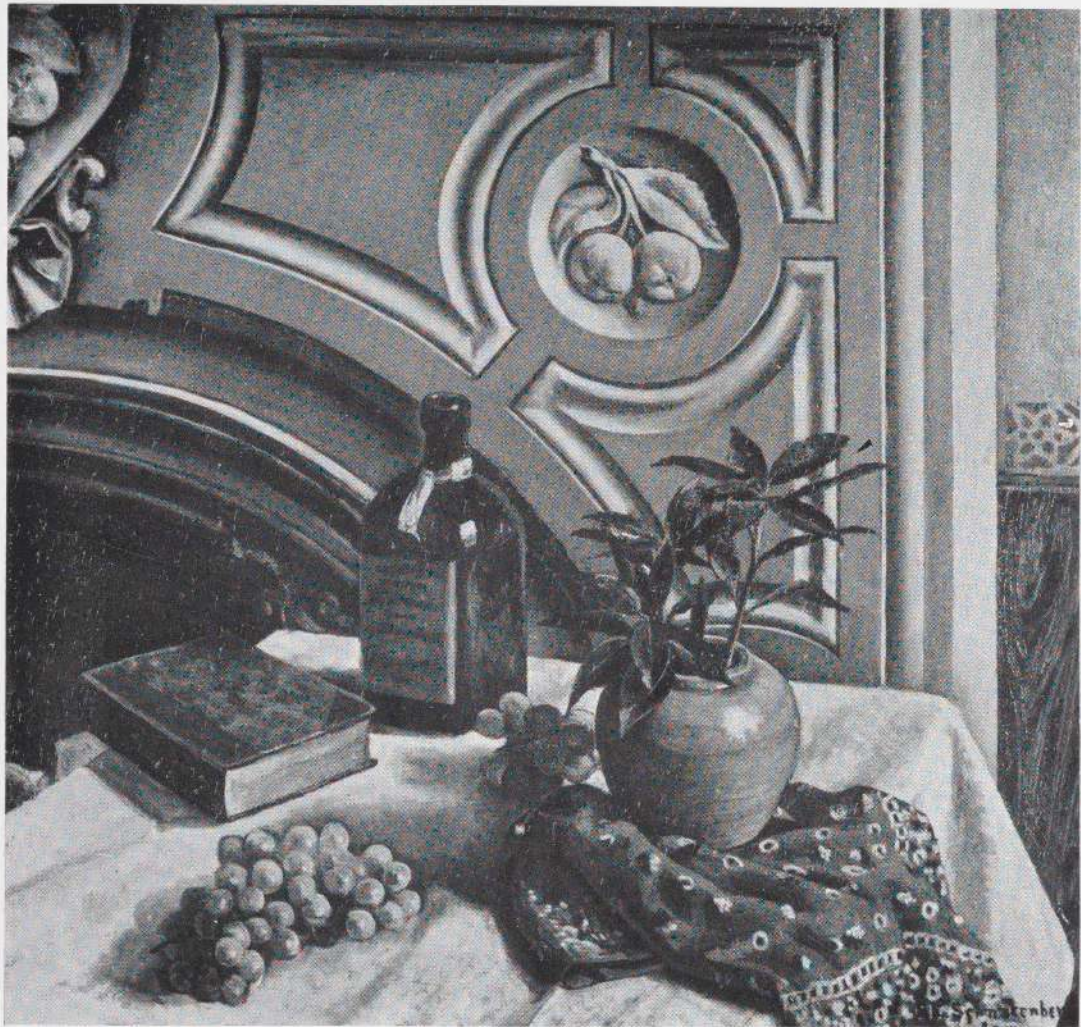
LEAVES, 1927. 30 x 30 inches

Collection Edward W. Root, Clinton, New York



ROBINSON 73

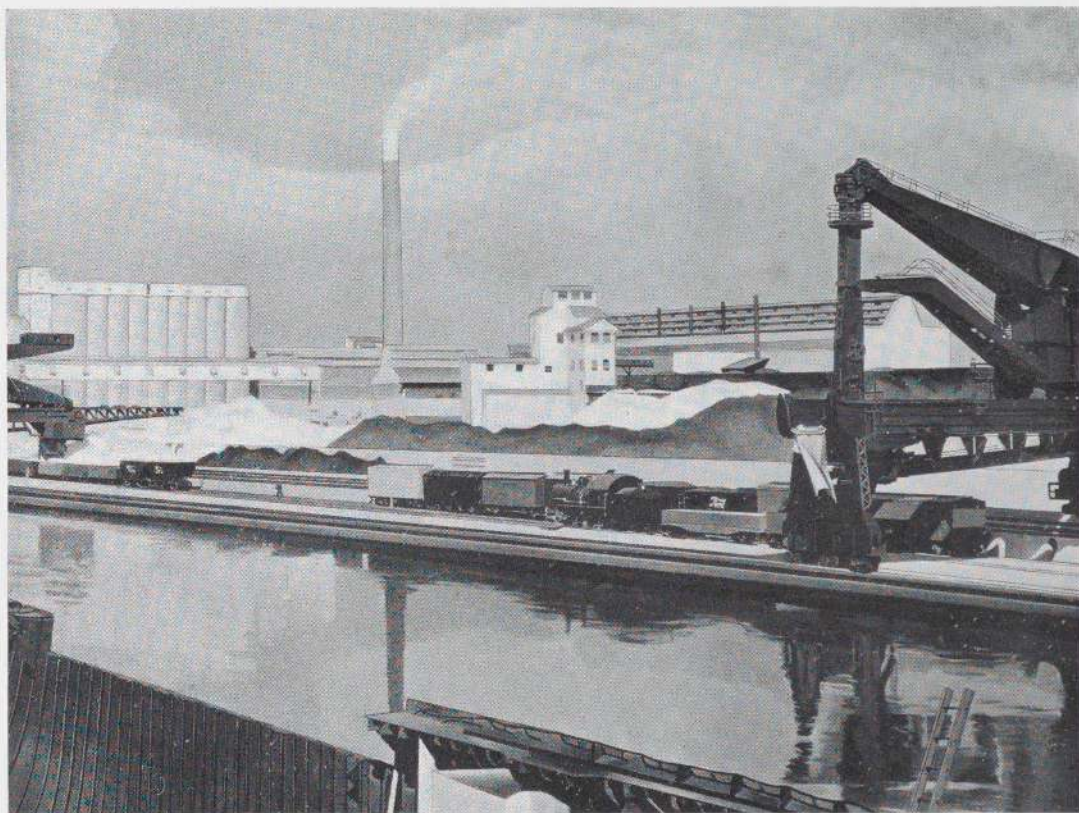
SERMON ON THE MOUNT, 1926. 60 x 96 inches  
Collection Eugene Schoen, Inc., New York



74 SCHNAKENBERG

STILL-LIFE WITH A RED BANDANA, 1929. 30 $\frac{1}{8}$  x 32 inches

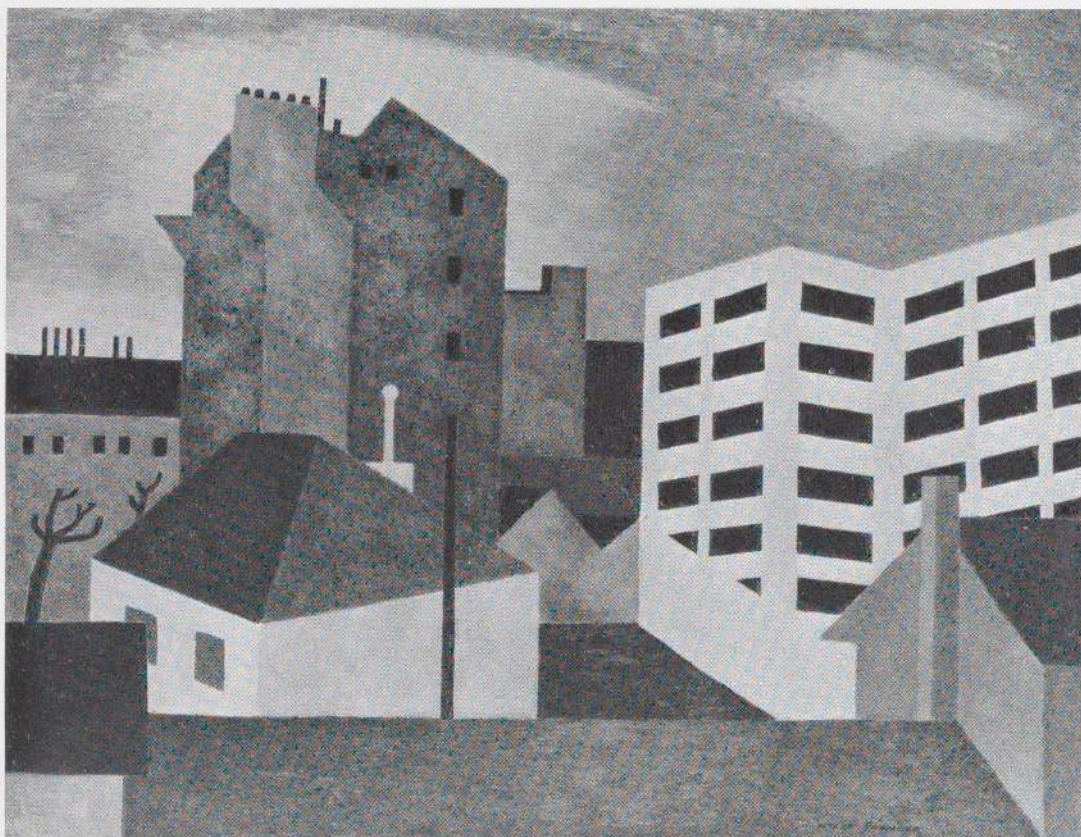
Collection Kraushaar Galleries, New York



SHEELER 80

AMERICAN LANDSCAPE, 1930. 24 x 31 inches

Collection the Artist



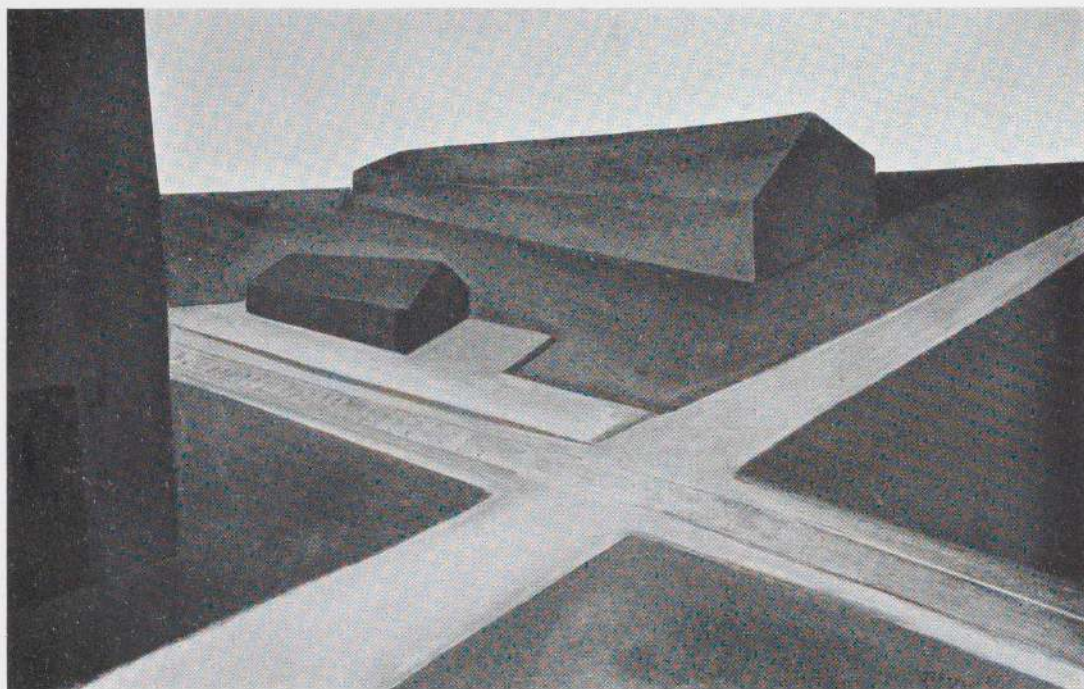
83 SPENCER

WHITE FACTORY, 1929. 20 x 25 $\frac{3}{4}$  inches  
Collection Daniel Gallery, New York



TACK 84

LARGO, 1928. 44 x 35½ inches  
Collection Phillips Memorial Gallery, Washington



87 TOBEY

AMERICAN LANDSCAPE, 1928. 38 x 60 inches  
Collection the Artist



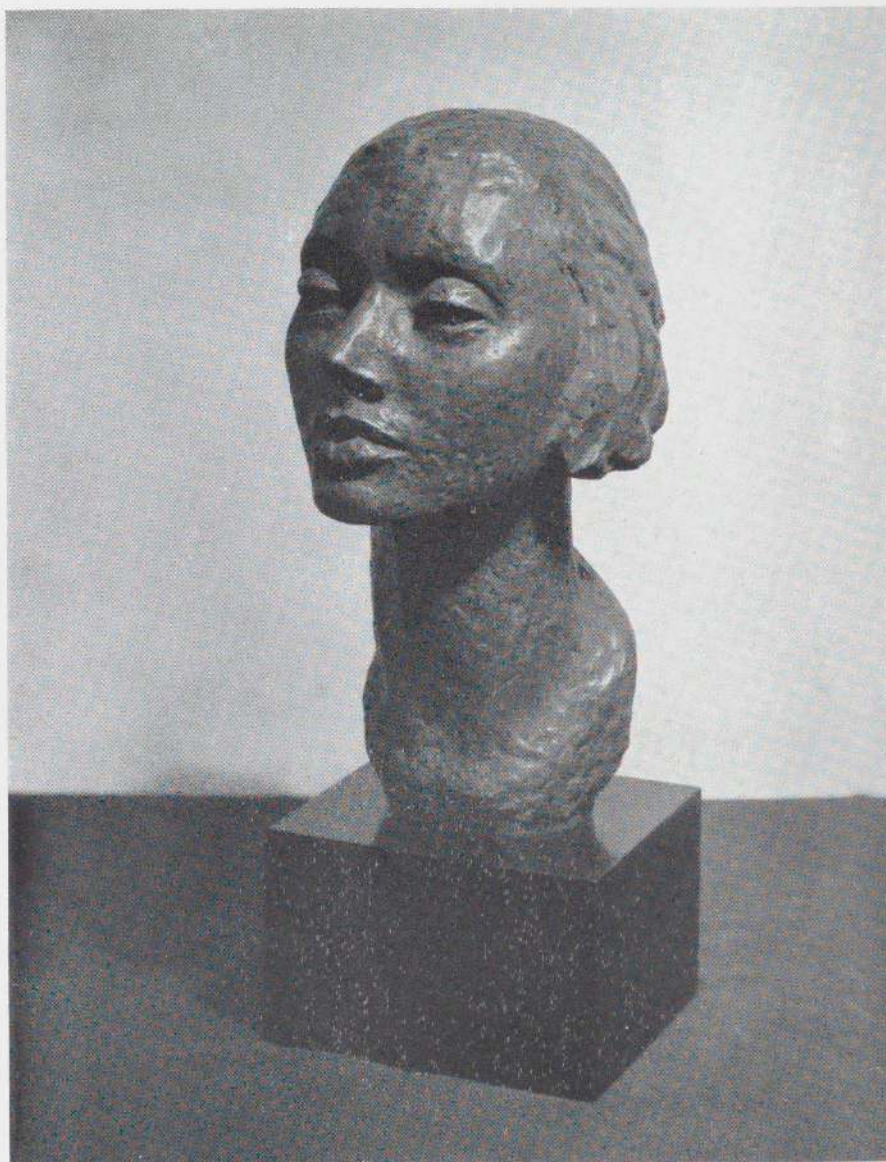
CALDER 90

Cow

Collection George D. Pratt, Jr., Bridgewater, Connecticut



94 DIEDERICH  
WRESTLERS  
Collection Downtown Gallery



GLENNY 102

HEAD OF KATHARINE CORNELL, 1930  
Private Collection, New York



105 LACHAISE

HEAD

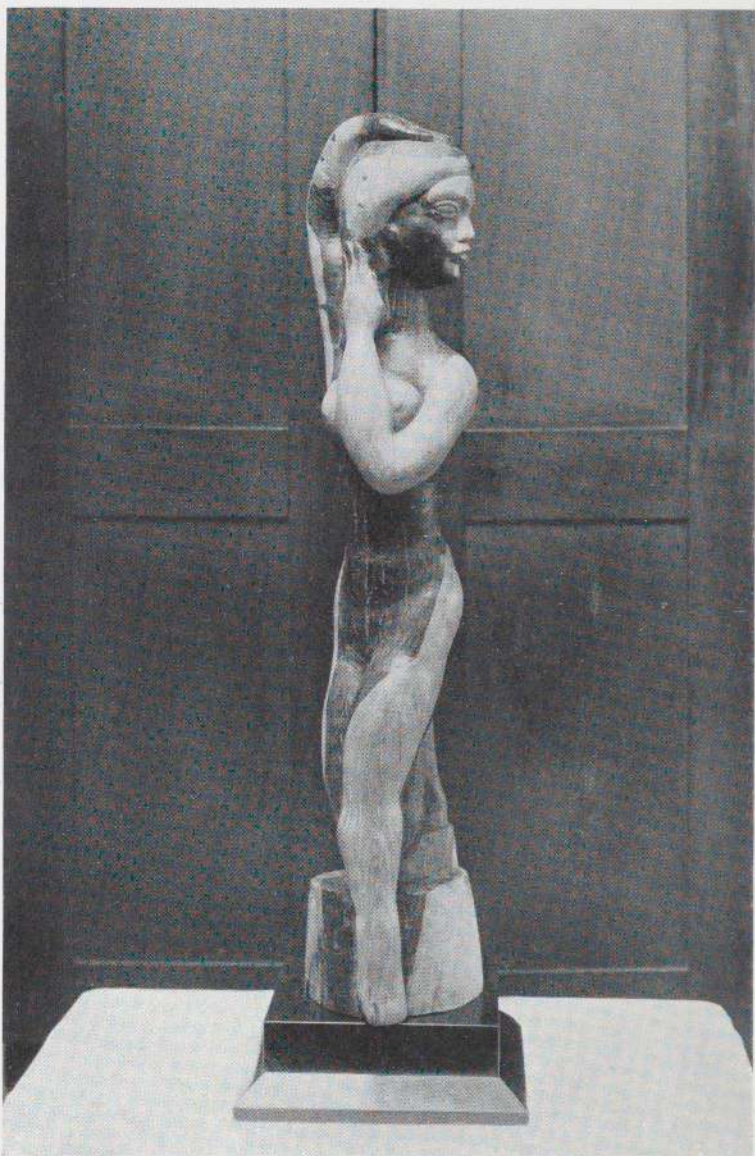
Collection Mrs. Charles J. Liebman, New York



LAURENT 120  
SEATED FIGURE, 1928  
Collection John A. Dunbar, New York



124 TALCOTT  
WRESTLER, 1929  
Collection the Artist



ZORACH 129  
WOMAN, *about* 1924  
Collection Frank Crowninshield, New York

ONE THOUSAND COPIES OF THIS CATALOG WERE  
PRINTED FOR THE TRUSTEES OF THE MUSEUM OF  
MODERN ART, BY THE PLANDOME PRESS OF NEW  
YORK, DECEMBER SECOND, NINETEEN THIRTY

