

# **Pablo Picasso, a retrospective : [supplement]**

Author

**Museum of Modern Art (New York, N.Y.)**

Date

**1980**

Publisher

**The Museum of Modern Art**

Exhibition URL

**[www.moma.org/calendar/exhibitions/1818](http://www.moma.org/calendar/exhibitions/1818)**

The Museum of Modern Art's exhibition history—from our founding in 1929 to the present—is available online. It includes exhibition catalogues, primary documents, installation views, and an index of participating artists.

# PABLO PICASSO

## A RETROSPECTIVE

---

The catalog of the exhibition "Pablo Picasso: A Retrospective" does not contain certain works that were borrowed after it had gone to press. The following listing is a complete record of these additional works.

The exhibition, on view from May 22 to September 30, 1980, and accompanying publication were made possible by a generous grant from the IBM Corporation. Additional support was provided by the Robert Wood Johnson Jr. Charitable Trust and the National Endowment for the Arts; an indemnity for the exhibition was provided by the Federal Council on the Arts and the Humanities.

The Museum of Modern Art, New York

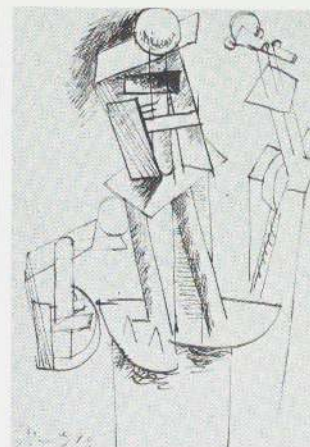




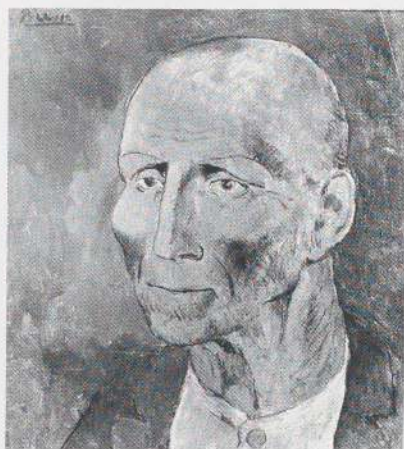
1. *The Picador*. Málaga, c. 1889  
Oil on wood,  
9 1/2 x 7 1/2" (24.1 x 18.9 cm)  
Not in Zervos. Collection Claude Picasso, Paris



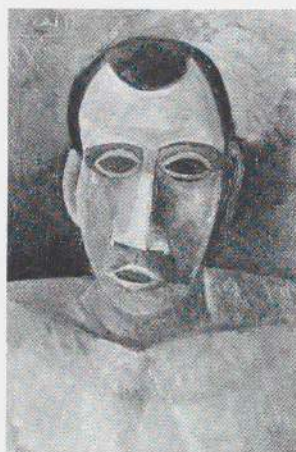
4. *Study for Three Women*.  
Paris, Spring 1908  
Gouache, 10 x 12 7/8" (25.4 x 32.8 cm)  
Zervos XXVI, 335. Daix 121  
Musée Picasso, Paris



7. *Study for a Construction*. 1912  
Pen and ink, 6 3/4 x 4 7/8" (17.2 x 12.4 cm)  
Zervos II, 296  
The Museum of Modern Art, New York  
Purchase



2. *Head of a Peasant*  
Gosol, early Summer 1906  
Oil on canvas, 17 3/4 x 15 7/8" (45.1 x 40.3 cm)  
Zervos VI, 769. D.B. XV, 53  
Private collection



5. *Bust of a Man*  
Paris, Summer 1908  
Oil on canvas, 24 3/8 x 17 1/8" (62 x 43.5 cm)  
Zervos II, 76. Daix 143  
Private collection



8. *Harlequin with Guitar*. [Paris], 1916  
Oil on wood, 8 5/8 x 5 1/2" (21.8 x 14 cm)  
Not in Zervos  
Marina Picasso Foundation



3. *Woman's Head*. Paris, early 1908  
Oil on canvas, 28 7/8 x 23 3/4" (73.3 x 60.3 cm)  
Zervos II, 52. Daix 105  
Private collection.



6. *Woman in a Black Hat*  
Paris, Winter 1909-10  
Oil on canvas, 28 3/4 x 23 7/8" (73 x 60.4 cm)  
Zervos II, 178. Daix 329  
Galerie Beyeler, Basel

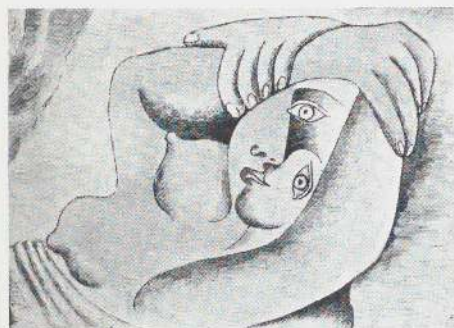


9. *Bathers by the Edge of the Sea*  
[Fontainebleau, Summer] 1921  
Oil on wood, 6 1/2 x 7 7/8" (16.5 x 20 cm)  
Zervos IV, 264  
Collection Paloma Picasso Lopez, Paris

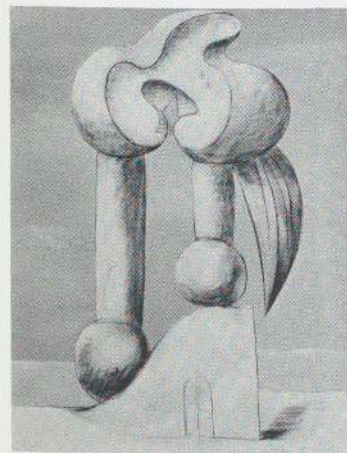




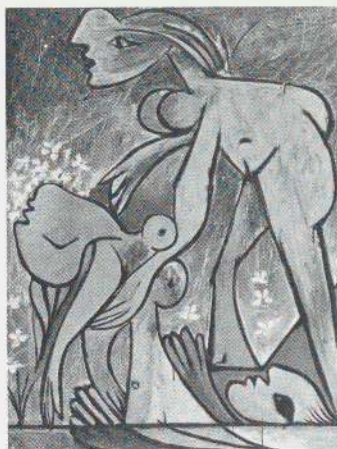
10. *Portrait of Léon Bakst*  
[Paris], April 1, 1922  
Pencil, 25½ x 19¾" (64.7 x 49.2 cm)  
Zervos IV, 363. Musée Picasso, Paris



11. *Reclining Woman*  
Dinard, August 18, 1929  
Oil and charcoal on canvas,  
6¾ x 8¾" (16.1 x 21.9 cm)  
Not in Zervos. Marina Picasso Foundation



12. *Figure at the Edge of the Sea* (Project for a Monument). Boisgeloup, January 2, 1932  
Oil on canvas, 51¼ x 38¼" (130 x 97.1 cm)  
Not in Zervos  
Collection Claude Picasso, Paris



13. *The Rescue*. [Paris], December 1932  
Oil on canvas, 51¼ x 38¾" (130.3 x 97.5 cm)  
Zervos VIII, 66  
Collection Ernst Beyeler, Basel



14. *Girl Reading*. Paris, 1934  
Oil on canvas,  
63¾ x 51¼" (162.2 x 130 cm)  
Zervos VIII, 246. Private collection



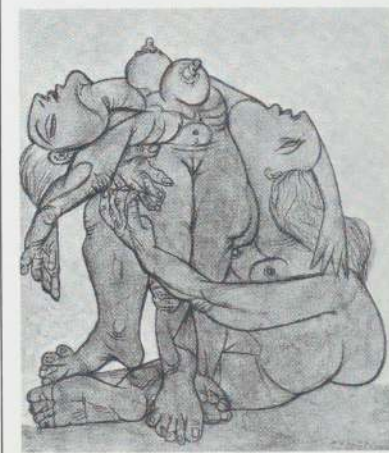
15. *Blind Minotaur*. Paris, December 30, 1934  
India ink, 9½ x 12½" (24.1 x 32 cm)  
Not in Zervos. Private collection



16. *Frightened Horse*  
Boisgeloup, April 15, 1935  
Pencil, 6¾ x 10" (17.2 x 25.4 cm)  
Not in Zervos. Jan Krugier Gallery, Geneva



17. *Portrait of Marie-Thérèse Walter*  
Paris, December 27, 1935  
Pencil, 10¼ x 13½" (25.7 x 34.3 cm)  
Not in Zervos. Private collection



18. *The Rescue*. Juan-les-Pins, April 29, 1936  
Oil and charcoal on canvas,  
25¾ x 21¼" (65 x 53.9 cm)  
Not in Zervos  
Collection Paloma Picasso Lopez, Paris





19. *The Rescue*. Juan-les-Pins, May 4, 1936  
India ink, 13½ x 20½" (34.1 x 51.2 cm)  
Zervos VIII, 284  
Collection Paloma Picasso Lopez, Paris



20. *Reclining Nude with Stars*  
August 12–October 2, 1936  
Oil on canvas, 51¾ x 63¾" (130 x 162.4 cm)  
Zervos VIII, 310  
Collection L. and M. Leiris



21. *Portrait of Marie-Thérèse Walter*  
Paris, January 9, 1938  
Oil, pastel, and charcoal on canvas,  
18¼ x 15" (46.2 x 38 cm)  
Not in Zervos. Private collection



22. *Dora Maar Seated in an Armchair*  
[Paris], February 2, 1938  
Lead pencil, colored pencils, and India ink on  
cardboard, 10⅞ x 8⅝" (27.5 x 21.6 cm)  
Zervos IX, 118. Musée Picasso, Paris



23. *The Fisherman's Family*  
Paris, May 18, 1938  
Pencil and oil preparation on plywood,  
38 x 51¼" (96.5 x 130.2 cm)  
Zervos IX, 185. Private collection



24. *Seated Woman*. Mougins, July 22, 1938  
Pencil and India ink,  
10½ x 7⅞" (26.6 x 19.7 cm)  
Zervos IX, 184. Musée Picasso, Paris



25. *The Tree*. Paris, January 4, 1944  
India ink, 19¾ x 25½" (50.3 x 64.7 cm)  
Zervos XIII, 211. Musée Picasso, Paris



26. *Portrait of Françoise*  
Paris, May 31, 1946  
Oil on canvas, 32 x 25½" (81.3 x 64.8 cm)  
Not in Zervos  
Collection Claude Picasso, Paris



27. *Harlequin Puppet*  
[Paris], January 29, 1948  
Colored pencils, string, and cardboard,  
14¼ x 8¼" (36.3 x 21.9 cm)  
Not in Zervos. Collection Claude Picasso, Paris





28. *Claude Writing*  
Vallauris, January 11, 1951  
Oil on canvas, 18 x 15" (46 x 38 cm)  
Not in Zervos. Private collection



29. *Portrait of Paloma*  
Vallauris, December 13, 1952  
Oil on plywood, 18 1/8 x 10 5/8" (35.2 x 26.9 cm)  
Not in Zervos  
Collection Bernard Picasso, Paris



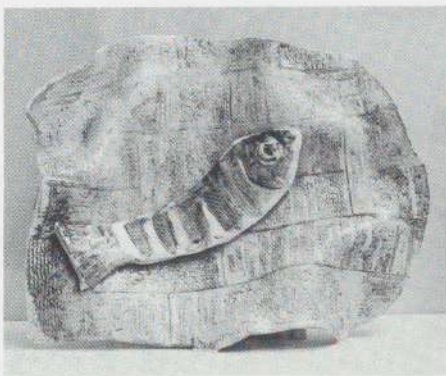
30. *Paloma with a Toy*  
Vallauris, December 1953  
Oil on plywood, 49 x 40" (124.5 x 101.5 cm)  
Zervos XV, 156 and 263  
Collection Paloma Picasso Lopez, Paris



31. *Portrait of Jacqueline*  
Cannes, December 30, 31, 1955  
India ink and lithograph,  
26 x 20" (66 x 50.8 cm)  
Zervos XVI, 525. Private collection



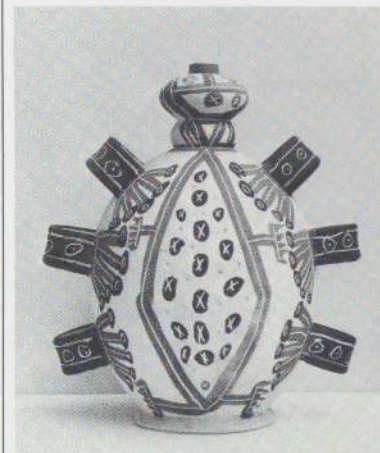
32. *Portrait of Paloma*  
Cannes, March 28, 1956  
Oil on canvas, 45 1/2 x 35" (115 x 89 cm)  
Zervos, XVII, 53  
Marina Picasso Foundation



33. *Fish on a Newspaper*. Cannes, April 1957  
Ceramic,  
12 x 15 1/2 x 2 1/2" (30.5 x 39.4 x 6.3 cm)  
Collection Claude Picasso, Paris  
Ramié 206 or 207



34. *Woman's Head*  
Ceramic,  
14 1/2 x 8 1/2 x 8 1/2" (37 x 21.6 x 21.6 cm)  
Collection Paloma Picasso Lopez, Paris



35. *Centipede Jar*  
Ceramic,  
16 1/2 x 10 x 14" (41.9 x 25.4 x 35.5 cm)  
Collection Claude Picasso, Paris



36. *Fragment of a Greek Vase*  
Ceramic, 4 x 8 1/4 x 7 1/4" (10.2 x 21 x 18.5 cm)  
Collection Paloma Picasso Lopez, Paris,  
and Claude Picasso, Paris





28. *Claude Writing*  
Vallauris, January 11, 1951  
Oil on canvas, 18 x 15" (46 x 38 cm)  
Not in Zervos. Private collection



29. *Portrait of Paloma*  
Vallauris, December 13, 1952  
Oil on plywood, 18 1/8 x 10 5/8" (35.2 x 26.9 cm)  
Not in Zervos  
Collection Bernard Picasso, Paris



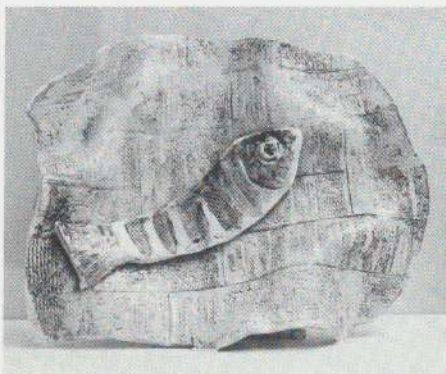
30. *Paloma with a Toy*  
Vallauris, December 1953  
Oil on plywood, 49 x 40" (124.5 x 101.5 cm)  
Zervos XV, 156 and 263  
Collection Paloma Picasso Lopez, Paris



31. *Portrait of Jacqueline*  
Cannes, December 30, 31, 1955  
India ink and lithograph,  
26 x 20" (66 x 50.8 cm)  
Zervos XVI, 525. Private collection



32. *Portrait of Paloma*  
Cannes, March 28, 1956  
Oil on canvas, 45 1/2 x 35" (115 x 89 cm)  
Zervos, XVII, 53  
Marina Picasso Foundation



33. *Fish on a Newspaper*. Cannes, April 1957  
Ceramic,  
12 x 15 1/2 x 2 1/2" (30.5 x 39.4 x 6.3 cm)  
Collection Claude Picasso, Paris  
Ramié 206 or 207



34. *Woman's Head*  
Ceramic,  
14 1/2 x 8 1/2 x 8 1/2" (37 x 21.6 x 21.6 cm)  
Collection Paloma Picasso Lopez, Paris

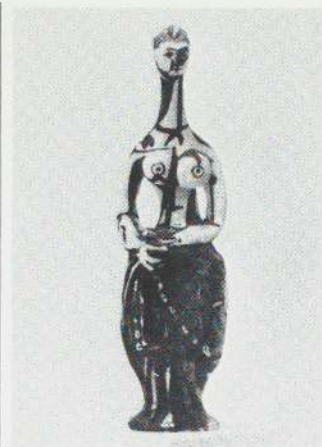


35. *Centipede Jar*  
Ceramic,  
16 1/2 x 10 x 14" (41.9 x 25.4 x 35.5 cm)  
Collection Claude Picasso, Paris



36. *Fragment of a Greek Vase*  
Ceramic, 4 x 8 1/4 x 7 1/4" (10.2 x 21 x 18.5 cm)  
Collection Paloma Picasso Lopez, Paris,  
and Claude Picasso, Paris





37. *Tanagra-type Figurine*  
Ceramic, 12 x 3 x 3" (30.5 x 7.6 x 7.6 cm)  
Collection Claude Picasso, Paris



38. *Owl*  
Painted sheet metal,  
15 x 7 x 6½" (38.1 x 17.8 x 16.5 cm)  
Collection Paloma Picasso Lopez, Paris



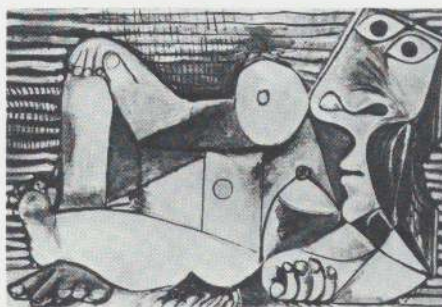
39. *Owl Vase*. February 3, 1961  
Ceramic, 23 x 15 x 15½" (58.4 x 38 x 39.4 cm)  
Collection Claude Picasso, Paris



40. *Women in a Straw Hat*. Mougins,  
December 19, 25, 1961, January 10, 11, 20, 1962  
Oil on canvas, 36¼ x 28¾" (92 x 73.2 cm)  
Zervos XX, 162  
Collection Claude Picasso, Paris



41. *Smoker and Still Life*  
Mougins, June 26, 29, 30, 1969  
Ink wash, 22¼ x 30¾" (56.6 x 77.8 cm)  
Zervos XXXI, 280  
Collection L. and M. Leiris



42. *Reclining Nude*  
Mougins, November 2, 1969  
Oil on canvas, 51 x 76¾" (130 x 195 cm)  
Zervos XXXI, 488  
Collection Claude Picasso, Paris



43. *The Grasshopper*  
Mougins, November 17, 1969  
Pencil, 19¾ x 25¾" (50.2 x 65.5 cm)  
Zervos XXXI, 502  
Galerie Louise Leiris, Paris



44. *Harlequin*. Mougins, December 20, 1970  
Pencil, 25½ x 19¾" (64.7 x 50 cm)  
Zervos XXXII, 332  
Galerie Louise Leiris, Paris

Copyright © 1980 The Museum of Modern Art,  
New York

© Succession Picasso for each work appearing  
with the following credit: Jan Krugier Gallery,  
Geneva; Musée Picasso, Paris; Bernard  
Picasso, Paris; Claude Picasso, Paris; Marina  
Picasso Foundation; Paloma Picasso Lopez,  
Paris; and for numbers 15, 17, 21, 23, 28,  
and 31 in private collections. S.P.A.D.E.M.,  
Paris, is the exclusive French agent for such  
reproduction rights, and V.A.G.A., New York,  
the exclusive United States agent for  
S.P.A.D.E.M.

The Museum of Modern Art is indebted to lenders  
of these works for providing photographs. In  
addition, acknowledgment is due the following  
photographers and institutions: Cahiers d'Art:  
1. The Art Institute of Chicago: 2, 5. Staff  
photographers, The Museum of Modern  
Art: Kate Keller, 8, 12, 15-17, 26-28; Mali  
Olatunji, 33-39. Rolf Petersen, Southbury,  
Conn.: 3. Soichi Sunami: 7, 14.