

# **Recent sculpture U.S.A. : [an exhibition]**

**Sponsored by the Junior Council of the Museum of  
Modern Art**

Author

**Museum of Modern Art (New York,  
N.Y.). Junior Council**

Date

**1959**

Publisher

**The Museum of Modern Art**

Exhibition URL

**[www.moma.org/calendar/exhibitions/3359](http://www.moma.org/calendar/exhibitions/3359)**

The Museum of Modern Art's exhibition history—  
from our founding in 1929 to the present—is  
available online. It includes exhibition catalogues,  
primary documents, installation views, and an  
index of participating artists.

**RECENT  
SCULPTURE  
USA**

LIBRARY

THE MUSEUM  
OF MODERN ART

Received:



## RECENT SCULPTURE U.S.A.

SPONSORED BY THE JUNIOR COUNCIL OF THE MUSEUM OF MODERN ART

*The Museum of Modern Art*      *May 13, 1959—August 16, 1959*

*The Denver Art Museum*      *October 12, 1959—November 22, 1959*

*Los Angeles County Museum*      *February 22, 1960—April 3, 1960*

*City Art Museum of St. Louis*      *May 3, 1960—June 12, 1960*

*Museum of Fine Arts, Boston*      *September 14, 1960—October 16, 1960*

TRUSTEES OF THE MUSEUM OF MODERN ART

Alfred H. Barr, Jr., Mrs. Robert Woods Bliss, William A. M. Burden, \*Stephen C. Clark, Ralph F. Colin, \*Mrs. W. Murray Crane, René d'Harnoncourt, Mrs. C. Douglas Dillon, Mrs. Edsel B. Ford, A. Conger Goodyear, \*Mrs. Simon Guggenheim, Wallace K. Harrison, Mrs. Walter Hochschild, \*James W. Husted, Philip C. Johnson, Mrs. Albert D. Lasker, Mrs. David M. Levy, Mrs. Henry R. Luce, Ranald H. Macdonald, Mrs. Samuel A. Marx, Porter A. McCray, Mrs. G. Macculloch Miller, Henry Allen Moe, William S. Paley, Mrs. Bliss Parkinson, Mrs. Charles S. Payson, \*Duncan Phillips, David Rockefeller, Mrs. John D. Rockefeller, 3rd, Nelson A. Rockefeller, \*Beardsley Ruml, \*Paul J. Sachs, James Thrall Soby, Mrs. Donald B. Straus, \*Edward M. M. Warburg, Monroe Wheeler, John Hay Whitney.

\*Honorary Trustee for Life

THE JUNIOR COUNCIL OF THE MUSEUM OF MODERN ART

Mrs. Donald B. Straus, Honorary Chairman; Walter Bareiss, Chairman; Harmon H. Goldstone, Vice-Chairman; Mrs. E. Powis Jones, Vice-Chairman; Mrs. Armand P. Bartos, Secretary; Peter A. Rübél, Treasurer; Mrs. Hulbert S. Aldrich, Davis B. Allen, Mr. and Mrs. Arthur G. Altschul, Mrs. Clark Andrews, Mrs. Douglas Auchincloss, Mrs. Seth Baker, Mr. and Mrs. Edward Barnes, Armand P. Bartos, Mrs. Amory H. Bradford, Arthur M. Bullowa, Mr. and Mrs. Carroll L. Cartwright, Mrs. David S. Christy, Miss Pamela Colin, Mrs. McCauley Conner, Mrs. Ruth Emerson Cooke, Mrs. Richard Deutsch, Arthur D. Emil, Mrs. Peter Farb, Robert D. Graff, Mrs. August Heckscher, William N. Jayme, Mrs. Dean Johnson, Mrs. Thomas L. Kempner, Mrs. Robert E. Kintner, Mrs. Edmundo Lassalle, Mr. and Mrs. James Laughlin, Mr. and Mrs. Richard P. Leach, Harold Eliot Leeds, Mrs. Robert C. Leonhardt, Mrs. John E. Lockwood, Mrs. John B. Oakes, Don Page, Mrs. Lawrence S. Phillips, Richard A. R. Pinkham, Mrs. Reuben F. Richards, Mrs. Stanley M. Rumbough, Jr., Mrs. David Sawin, Charles Schwep, Mrs. Alfred R. Stern, David Swope, Mrs. Philip D. Wiedel.

William S. Lieberman, Staff Advisor

RECENT SCULPTURE—U.S.A. Executive Committee, James Thrall Soby, Chairman; Dorothy C. Miller, René d'Harnoncourt. Junior Council Committee, Mrs. E. Powis Jones, Chairman; Peter A. Rübél, Vice-Chairman; Walter Bareiss, Mrs. Donald B. Straus.

## INTRODUCTION

*The Junior Council of the Museum of Modern Art is now in its tenth year. The Council is composed of a group of men and women vitally interested in the arts of today, and devoted to the aims and purposes of the Museum of Modern Art. The Council pursues a comprehensive year round program.*

*Since its inception the Council's projects have included three major exhibitions, the operation of the Art Lending Service, the publication of a yearly engagement calendar and special events such as "The Related Arts of Today," "The Living Arts of India" and this year's lecture series "Dimensions 1959," all designed to reinforce and supplement the Museum's regular program.*

RECENT SCULPTURE—U.S.A. *is the third in the series of exhibitions organized by the Council and devoted to contemporary art in America. It was preceded by YOUNG AMERICAN PRINTMAKERS and RECENT DRAWINGS—U.S.A., both directed by William S. Lieberman, staff advisor to the Junior Council. The Council is grateful to James Thrall Soby and Dorothy C. Miller who spent many hours selecting the sculptures and to René d'Harnoncourt who has installed them.*

*To the many other members of the staff who assisted in this project as well as to those whose contributions made the exhibition possible the Council wishes to express its gratitude. The Junior Council also would like to take this opportunity to thank Mrs. Donald B. Straus, now Honorary Chairman, for her leadership as Chairman during the past five years.*

WALTER BAREISS  
Chairman, Junior Council

*There are a number of startling developments in art since the Second World War. I think if asked to name one of the most unexpected—and I hope enduring—I would cite the extraordinary outburst of talent among British and American sculptors. For centuries we in the English speaking countries have thought that sculpture was a Continental or Oriental achievement, and our dreary monuments, relieved mostly by the fine, defiant innocence of our folk art, have led us often to confuse sculpture with statuary, which is quite a different matter. In brief, sculpture has seemed to us an atavistic miracle, depending for authority on uninhibited vitality and on visual imponderables which our literary traditions could not provide.*

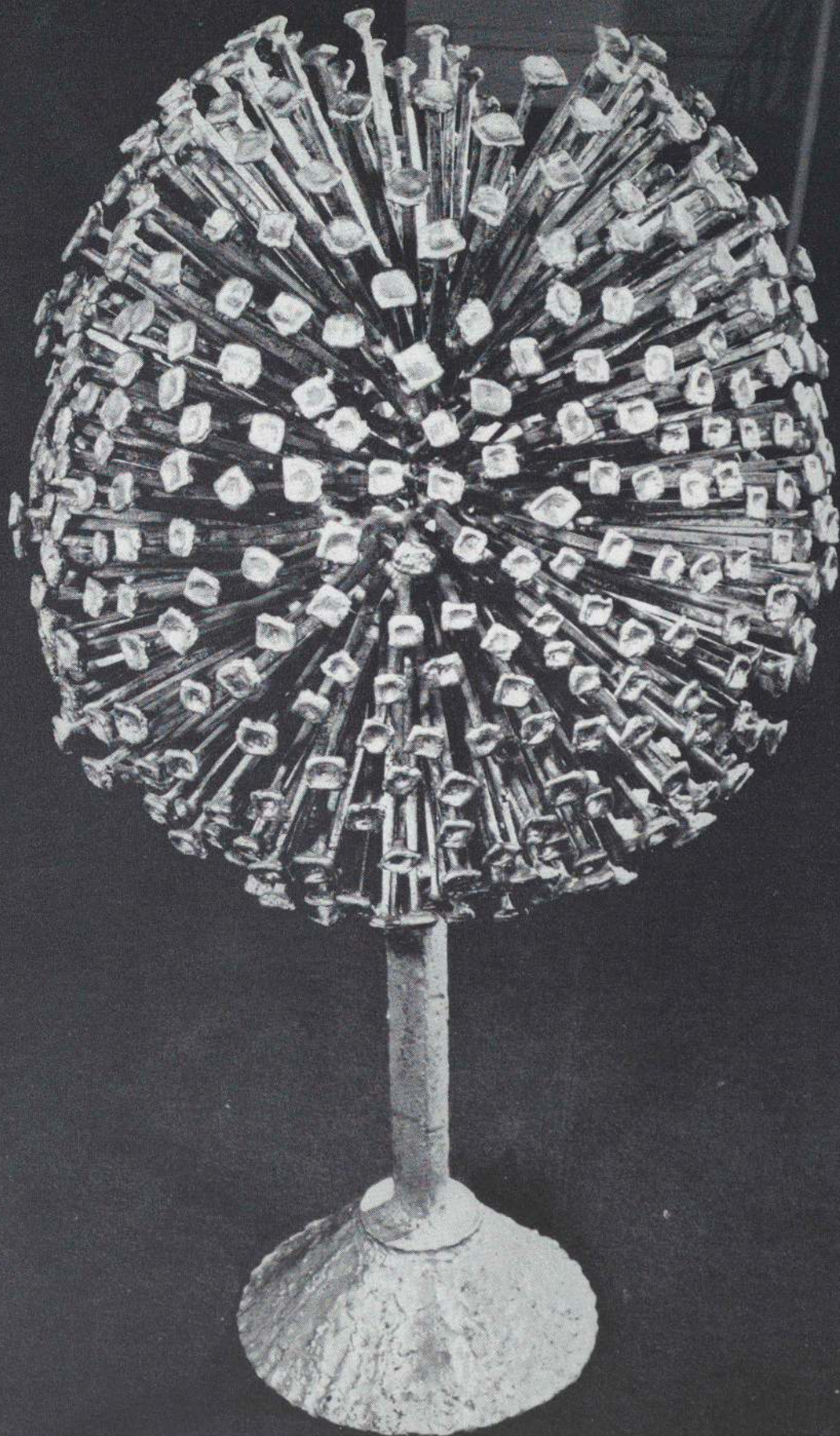
*All that has changed now. I think no fair-minded person can look at the present show, wide in range of styles and materials, and not realize that a spark has ignited our younger sculptors, as it had ignited some of the senior prophets, both native and foreign-born, who have joined in the exhibition generously and of their own accord. It makes little difference where the spark has come from, the history of art being in good part an account of unforeseeable, creative arson, whose flames illumine rather than destroy. But we can take great pride in what the best of our sculptors are producing, whether they carve or cast their works, weld them, or convert into estimable jewels the wry tiaras of the junkyard. More and more of us are learning to see in the round, and it has taken us a very long time. The artists have taught us, and our debt to them is marvelous and deep, as it has been always.*

JAMES THRALL SOBY

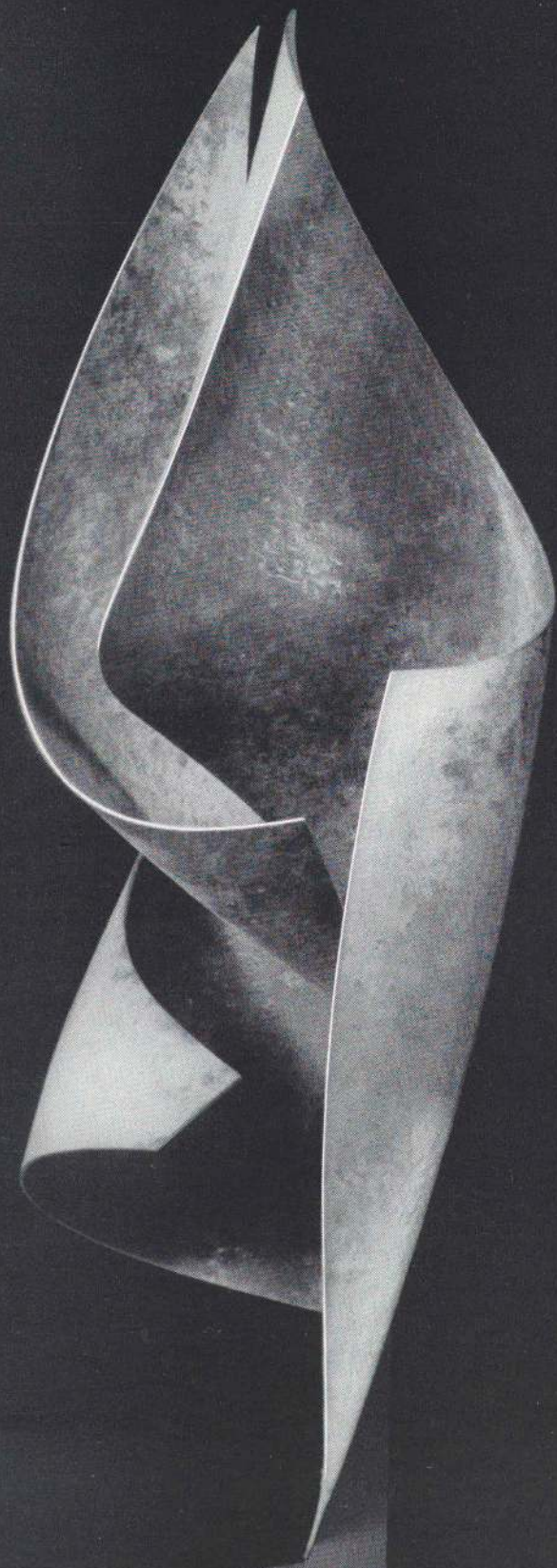


BASKIN: *Laureate Standing*. 1957. Cherry, 36" high.

BERTOIA: *Flower*. 1958. Steel, bronze and chrome, 40" high.



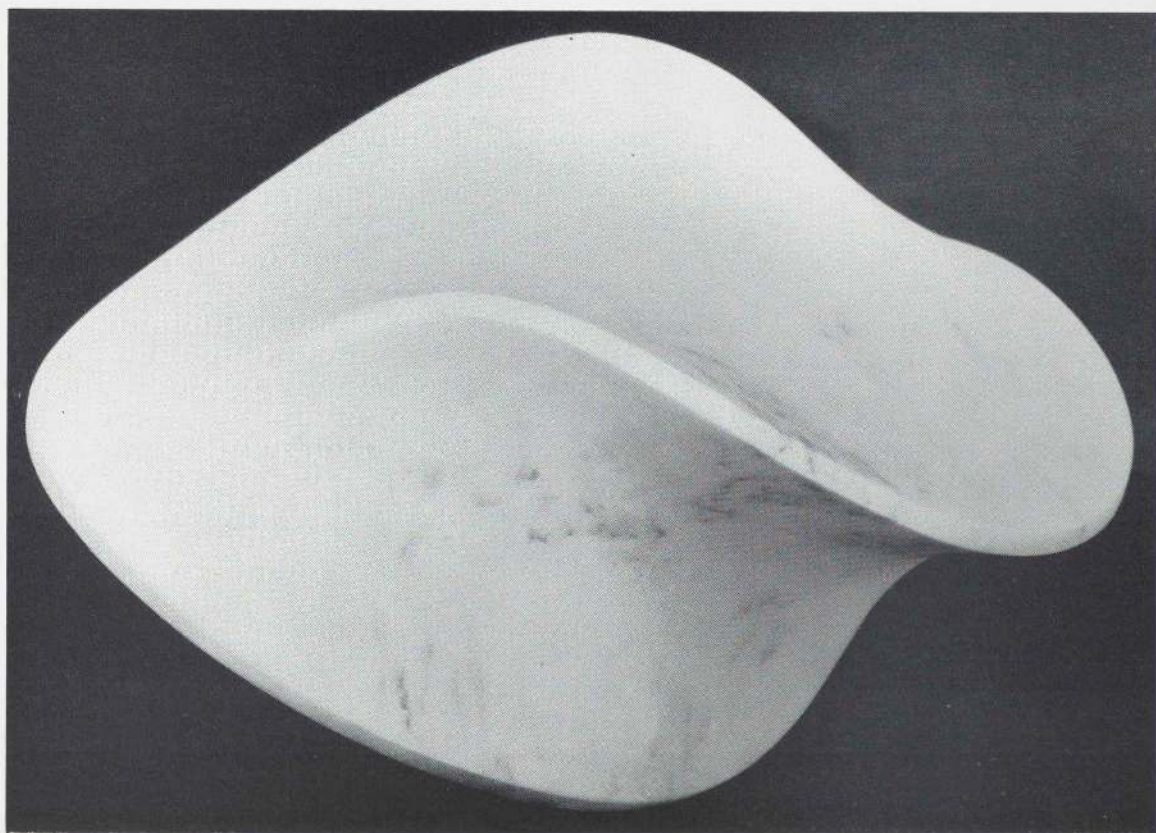


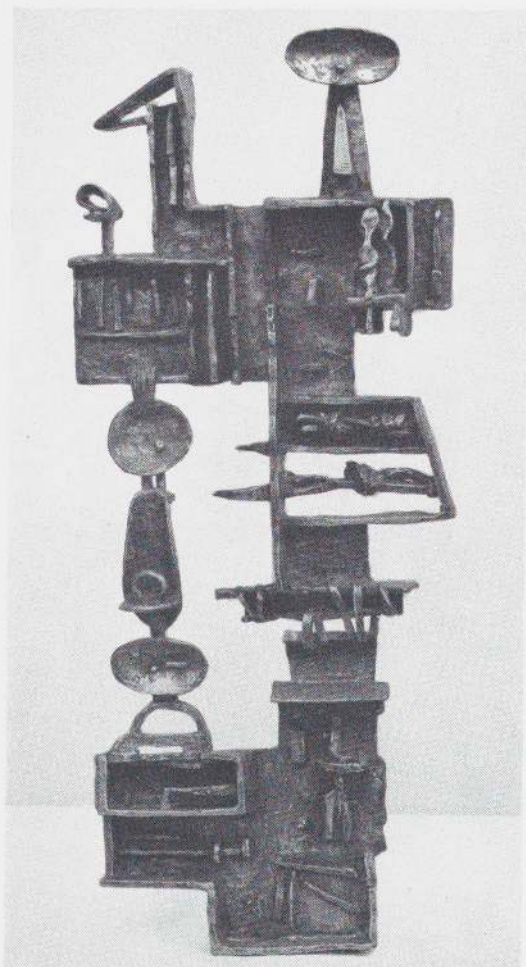




BLOOMER: *Sequence C, Number 1 and 2*. 1958. Brass, 22" high.

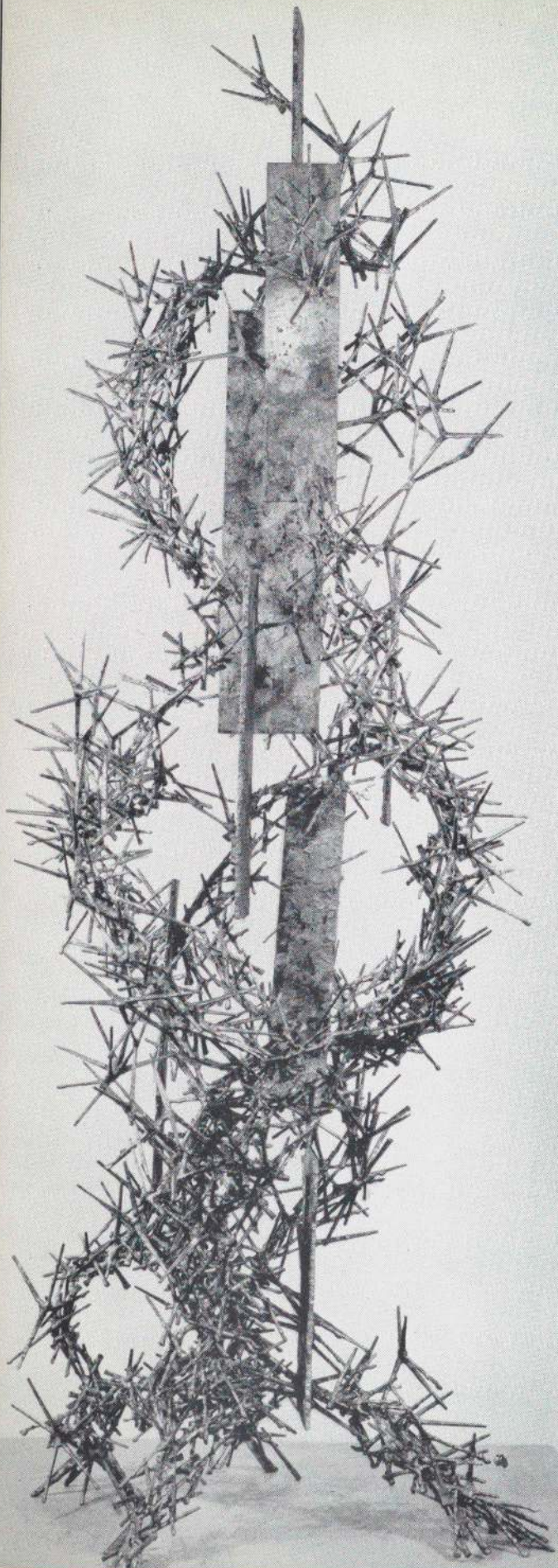
CARLBERG: *Minimal Surface Form 2*. 1957. Marble, 13" high.





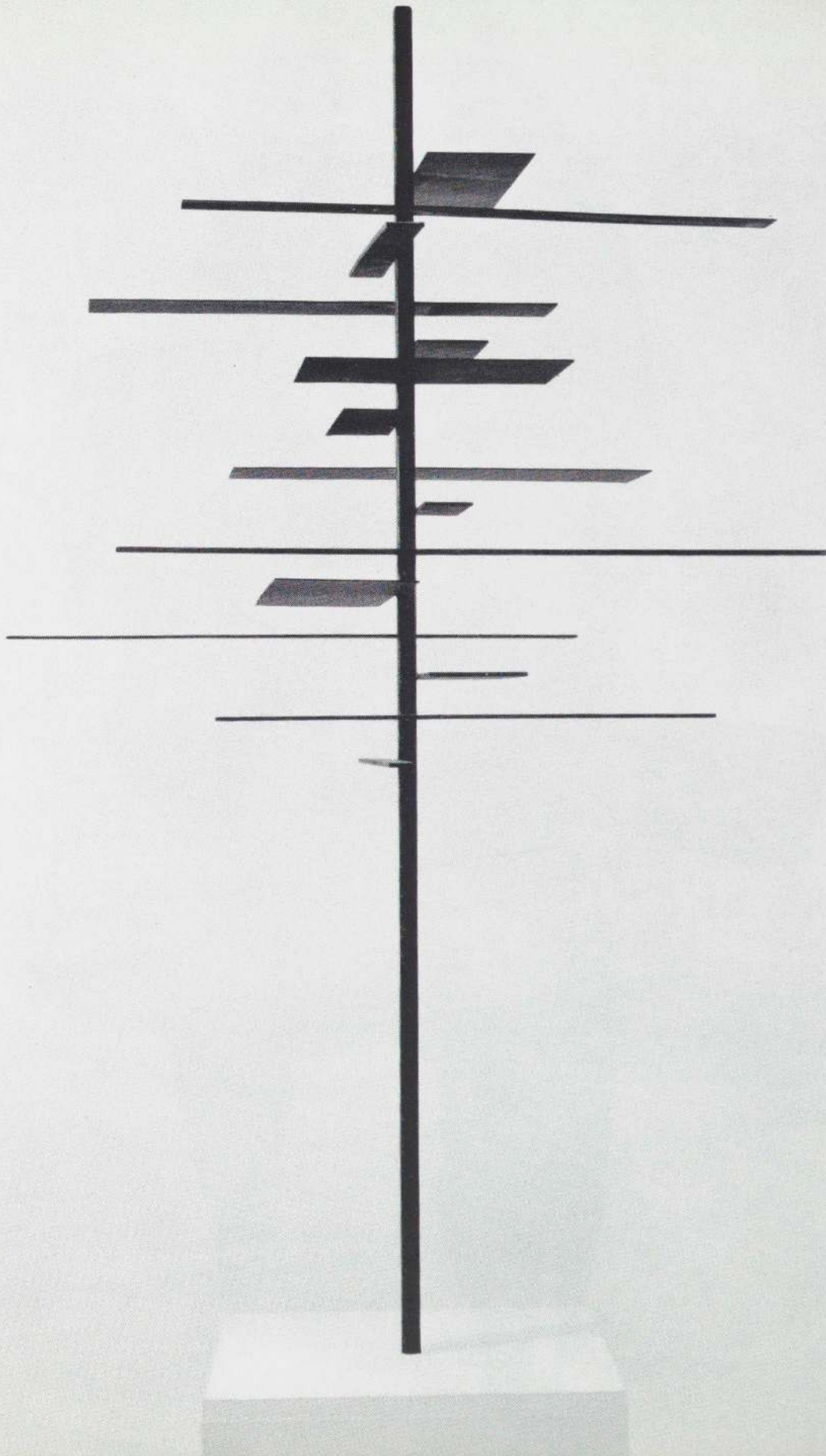
DEHNER: *Rites at Sal Safaeni Number 2*. 1957. Bronze, 26½" high. DURCHANEK: *Mat Wheeler's Wife*. 1957-58. Bronze, 6' 2" high.





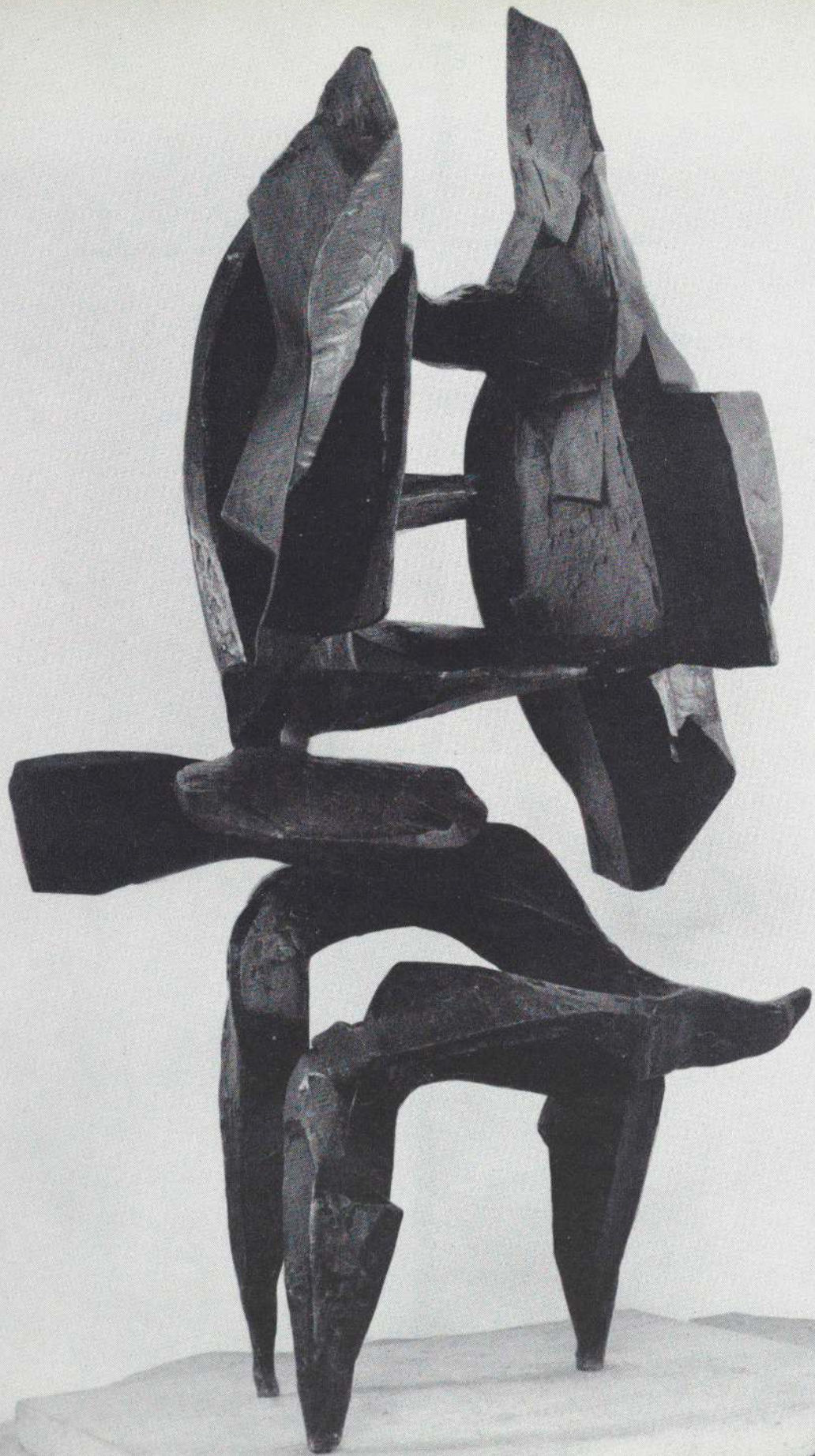
DYER: *Scintillation of Elements*. 1957. Steel and bronze, 59½" high.

GORDIN: *Number 17*. 1955. Steel, 56¼" high.



gh.

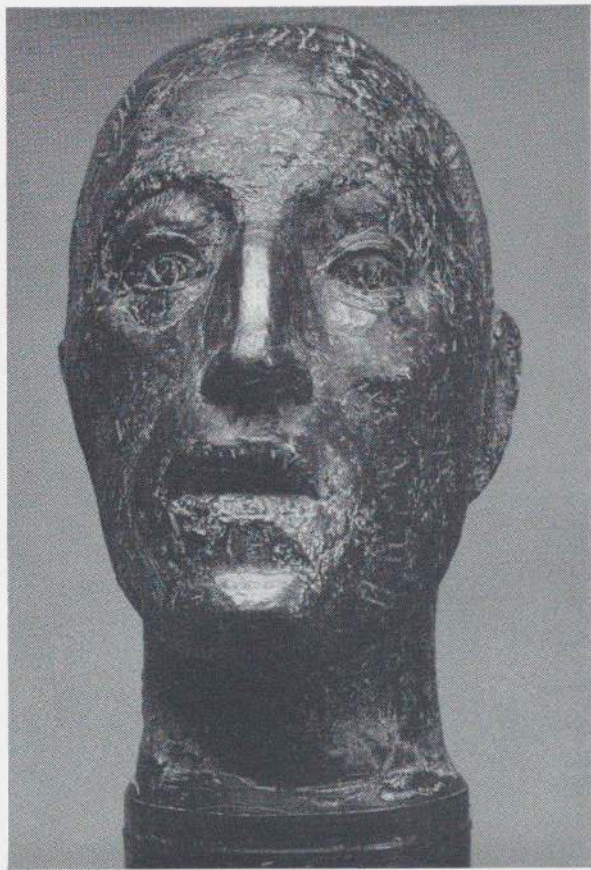
gh.





HADZI: *Scudi II*. 1958. Bronze, 36" high.

HARRAVY: *Martyr*. 1954. Bronze, 15" high.







HAYES: *Beast*. 1957. Steel, 22" high, 22" long.



HIGGINS: *The Outside of a Soldier*. 1958. Steel and plaster, 24½" high, 23" long.





JACOB: *Totem*. 1957. Bronze, 51¼" high.

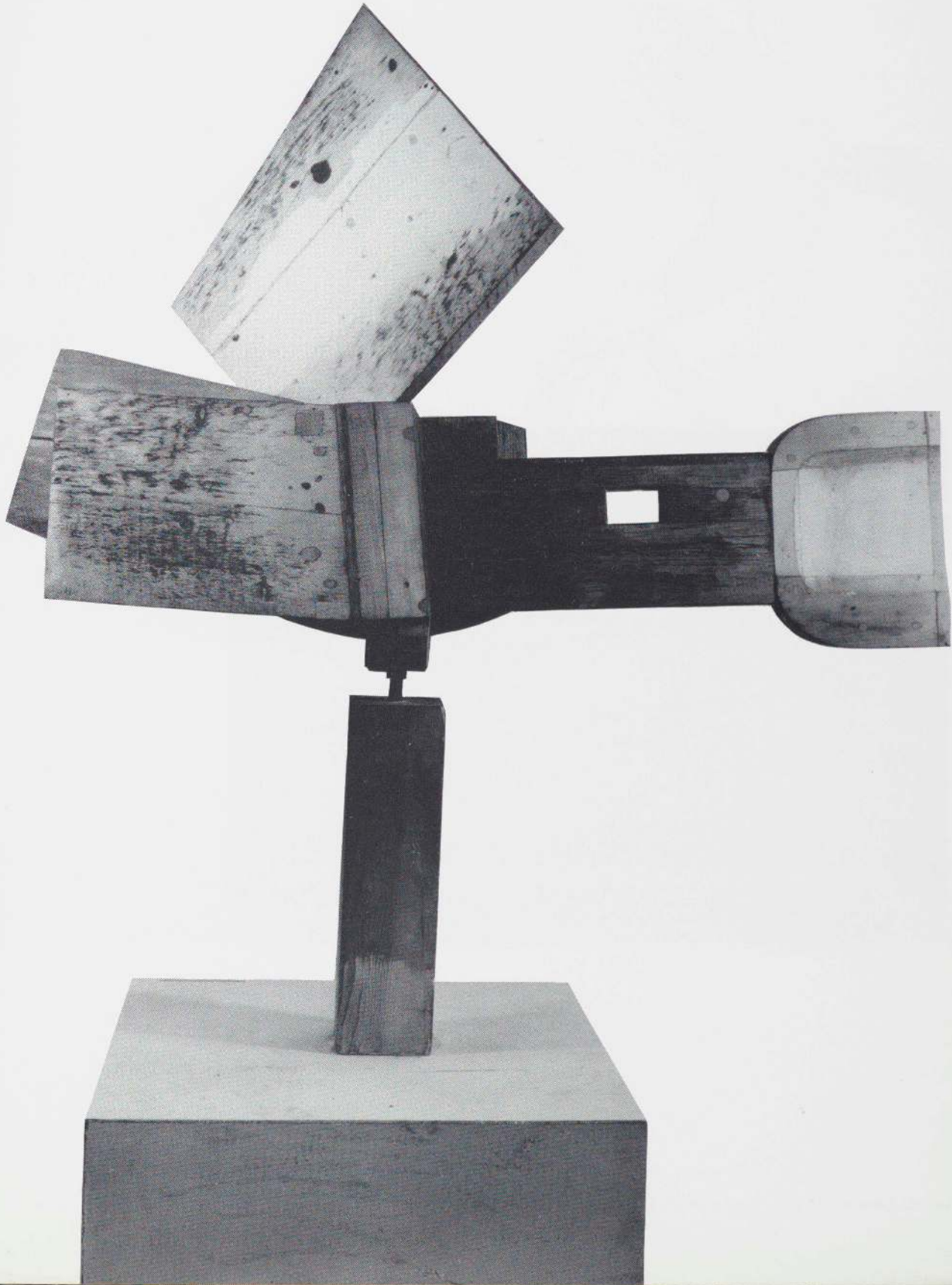
KAISH: *The Blessing*. 1957. Bronze, 29" high.

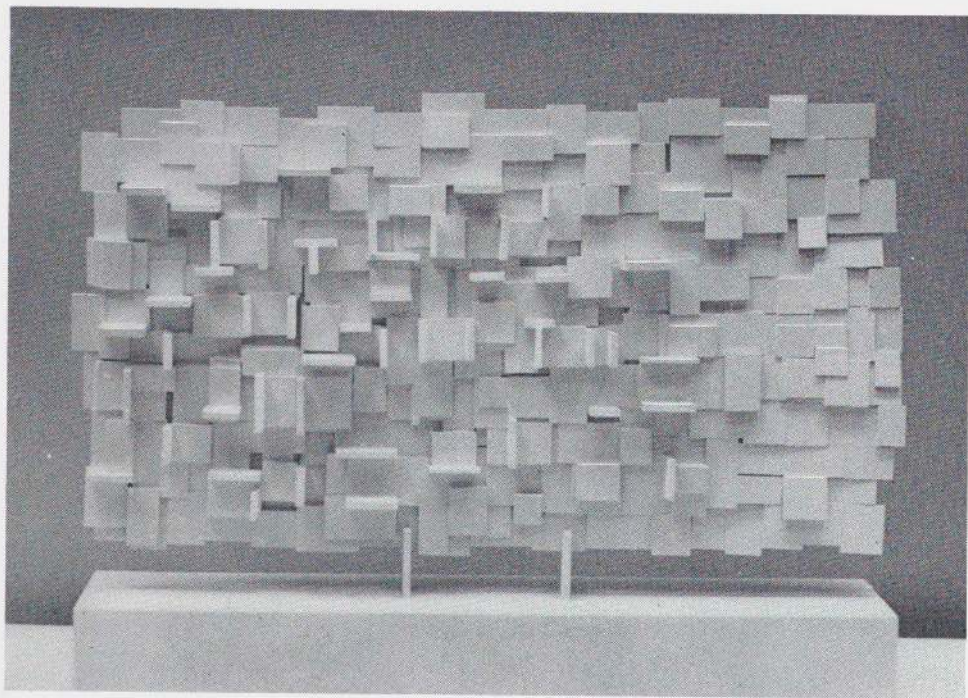




KING: *English Girl*. 1956. Bronze, 17½" high.

KOHN: *Object of the Sea*. 1957. Wood, 62" high, 55" long.





KRISEL: *Laminate C*. 1957. Acrylic, 15" long, 11" high.

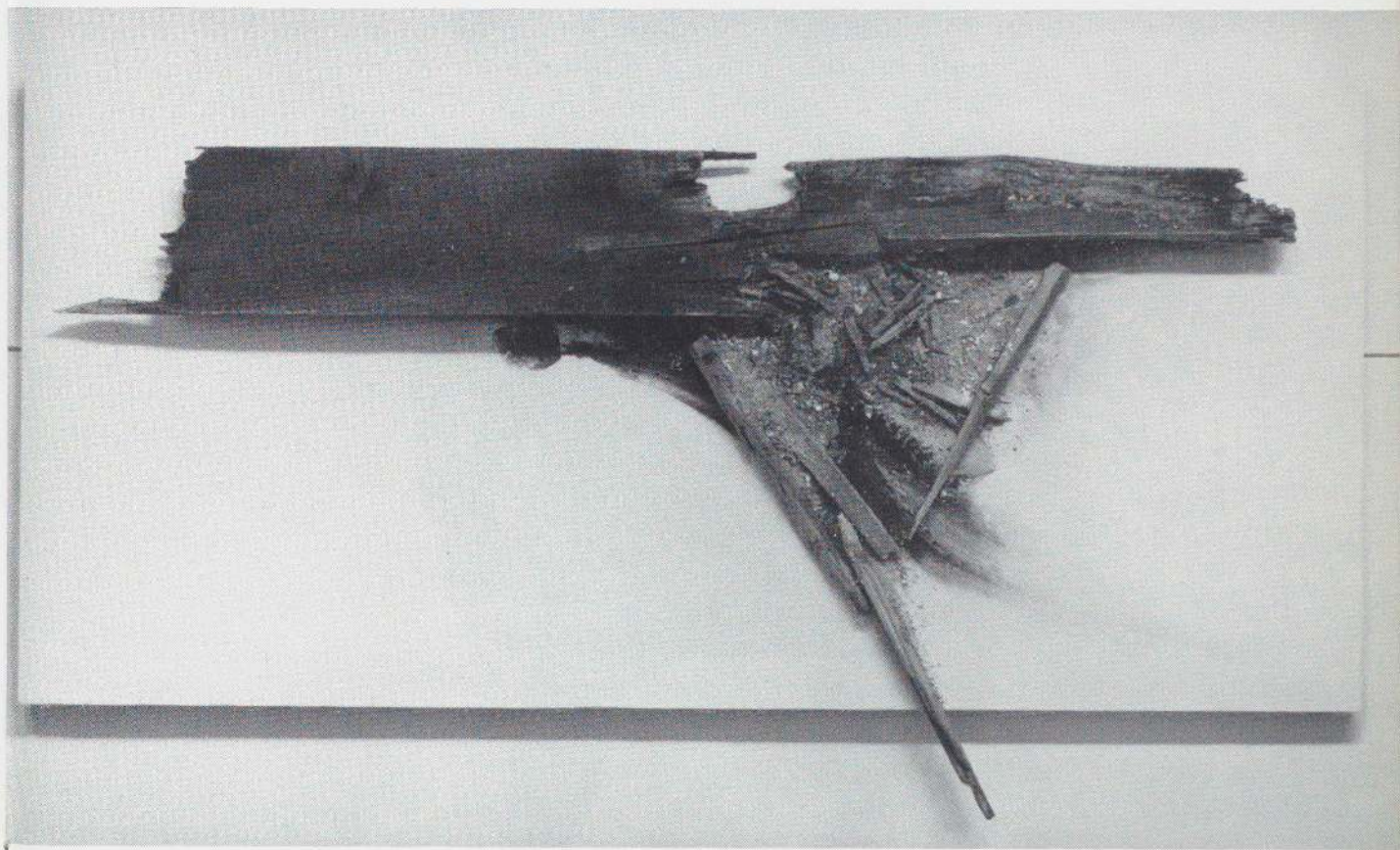


LEKBERG: *Till Eulenspiegel*. 1958. Steel, 25" high.





LIPSON: *Prophet*.  
1957. Nickel-silver on  
Monel metal, 7' 6" high.



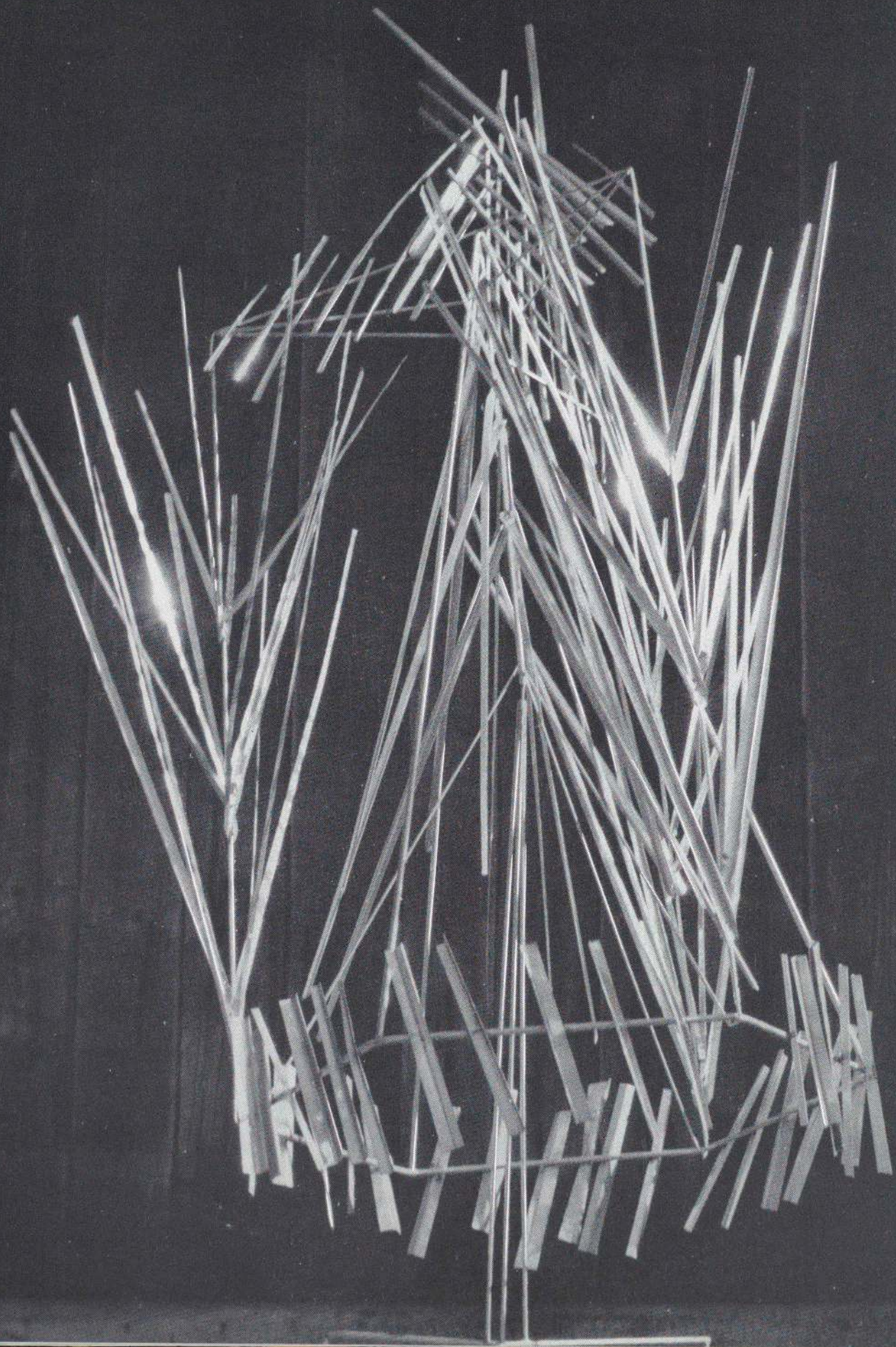
MALLERY: *In Flight*. 1957. Polyester resin, wood, paint and sand, 44 x 80".



NAKIAN: *Rape of Lucretia I*. 1958. Terra-cotta, 10" high, 14" long.

PINEDA: *The Sleepwalker*. 1950. Bronze, 38" high.







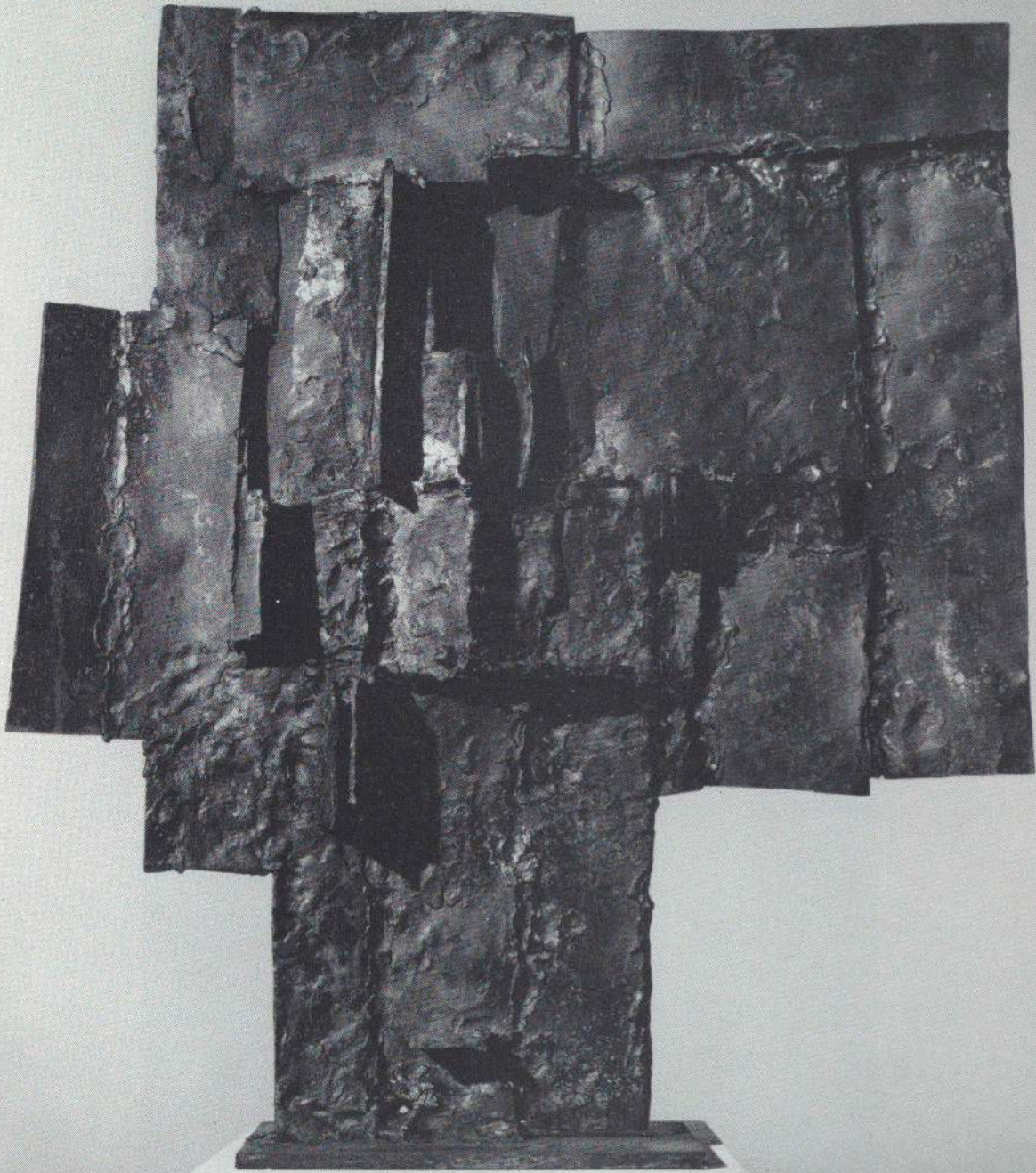
RICKEY: *Omaggio a Bernini*. 1958. Stainless steel, 66" high.

de RIVERA: *Construction 56*. 1958. Stainless steel, 13" high, 17" long.

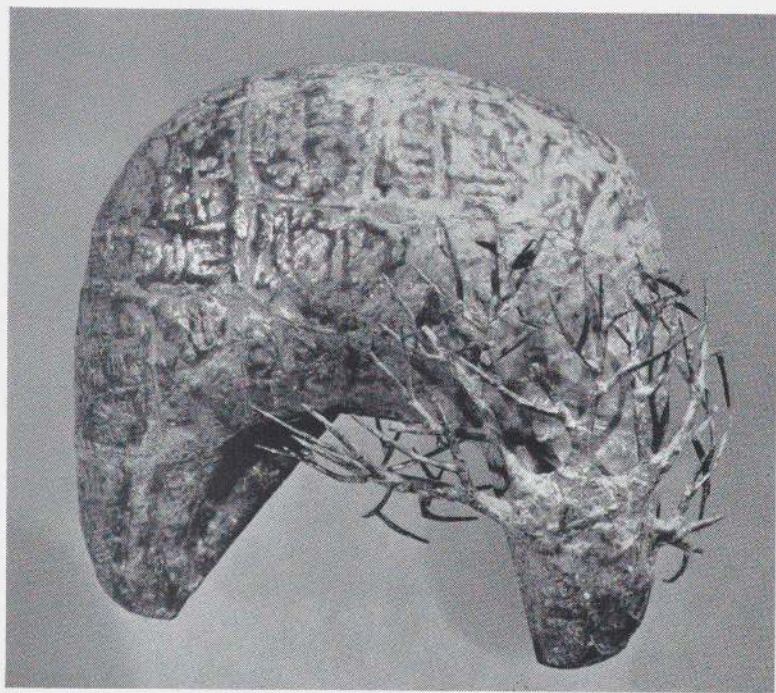


RIVERS: *Head*. 1957. Steel, 18" high.

ROSENTHAL: *The Ark*. 1958. Brass, 28" high.

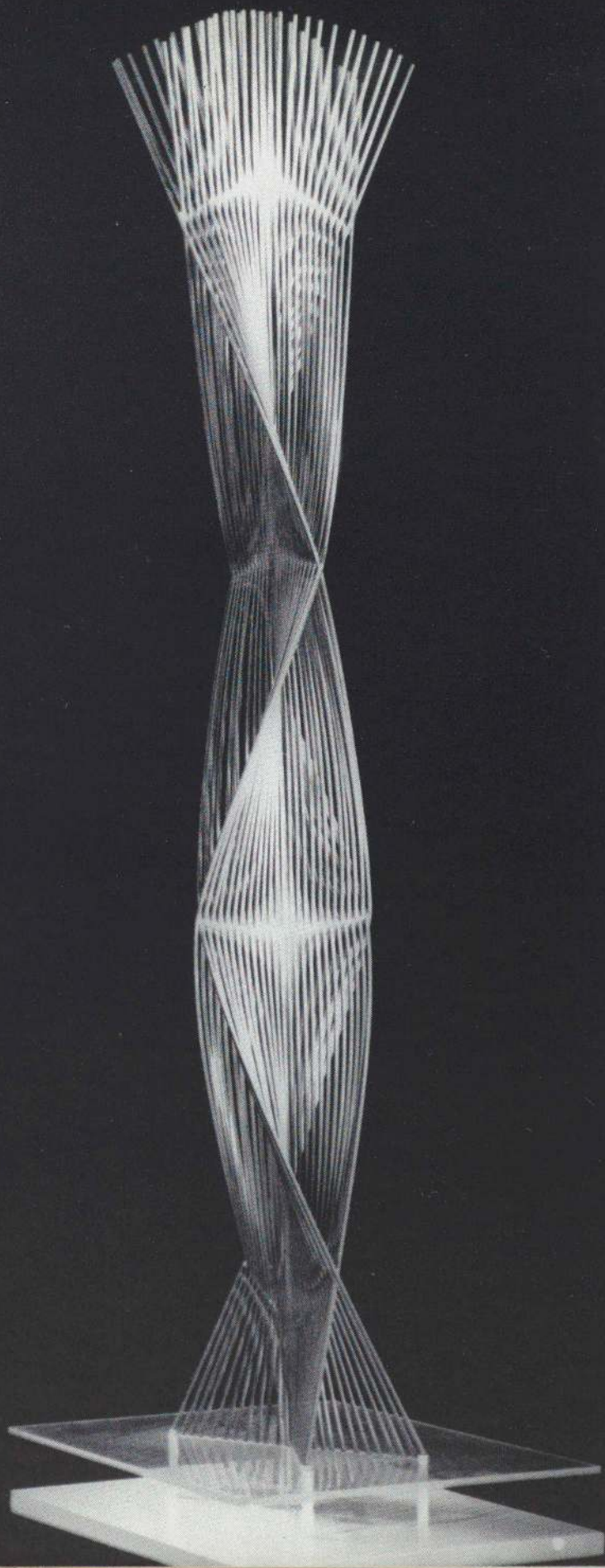


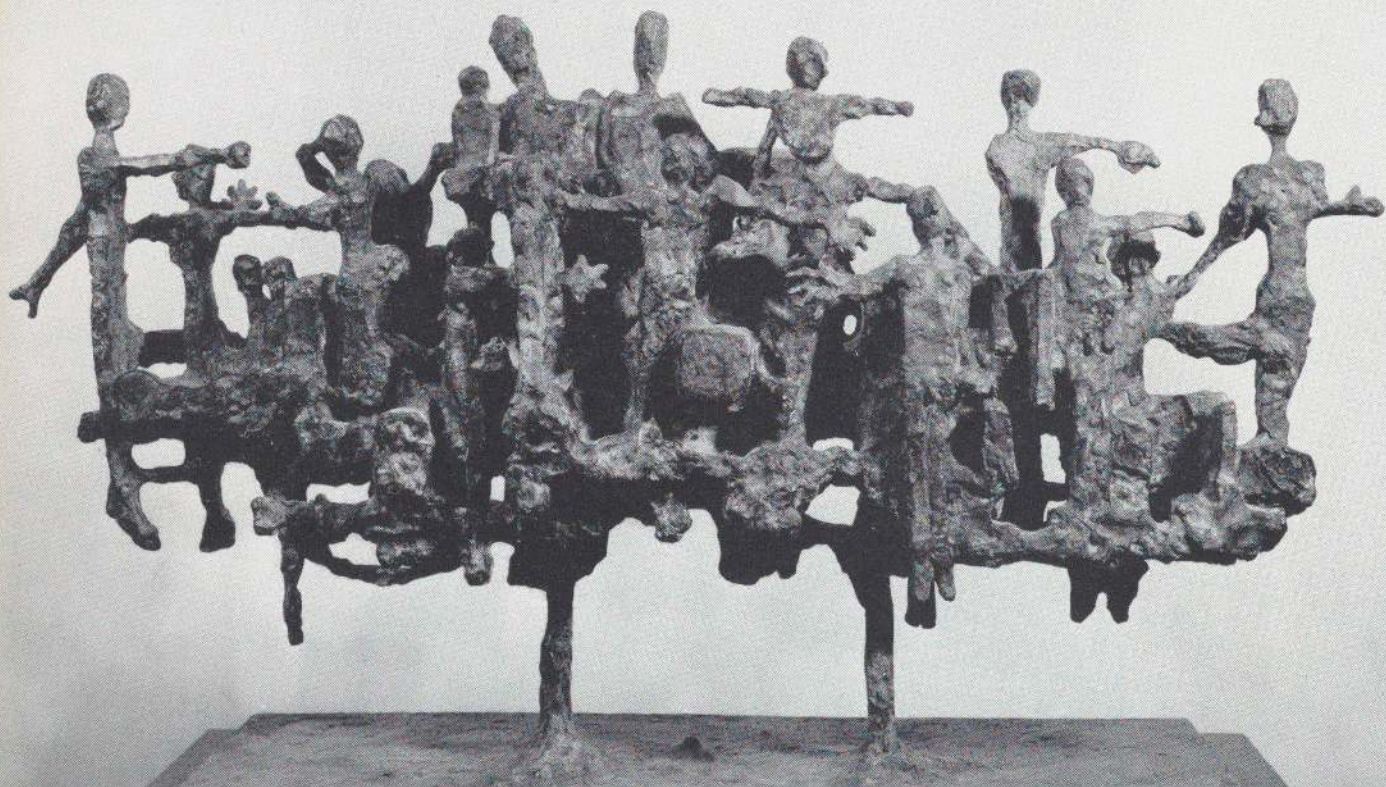




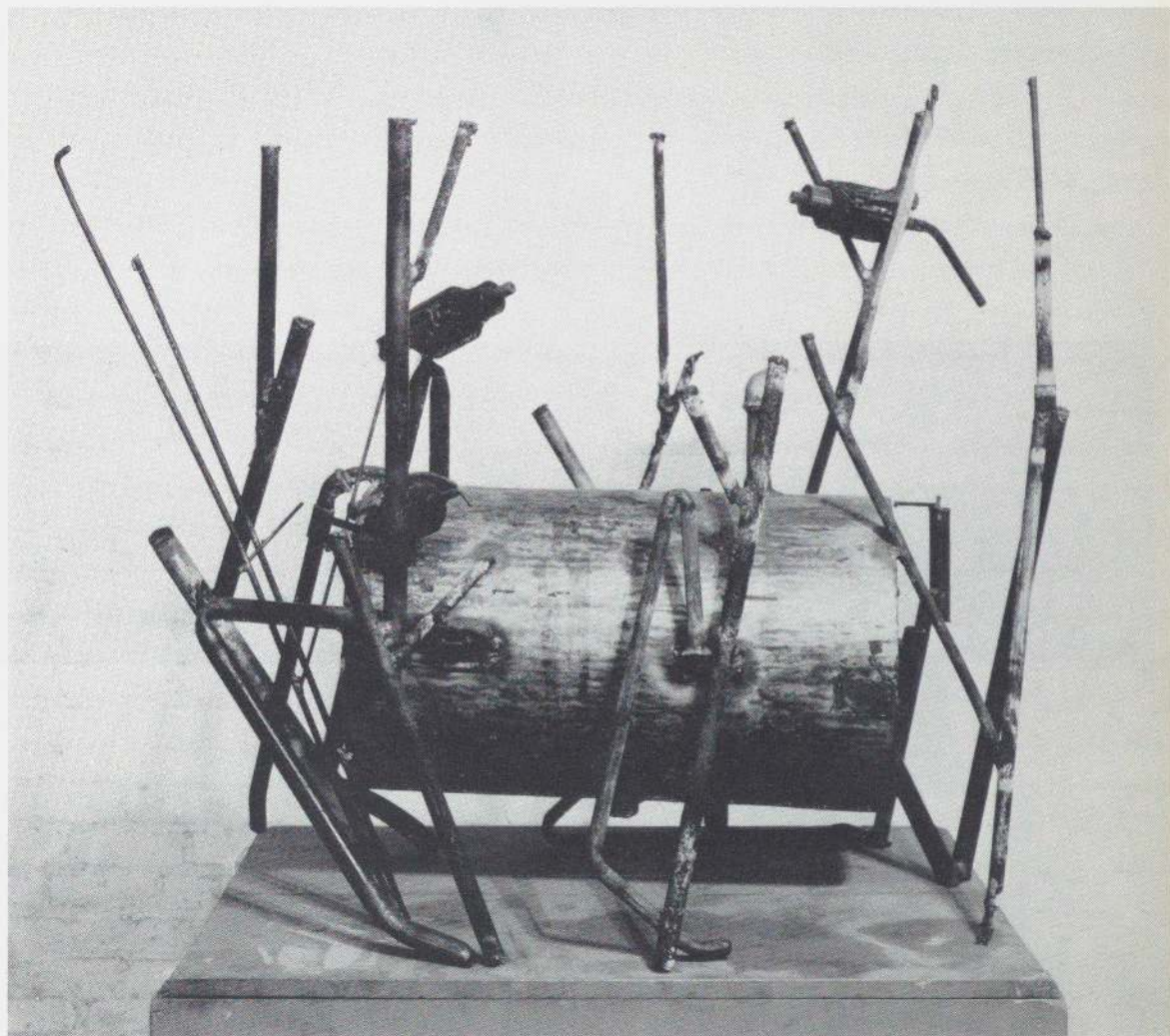
satoru: *Seed*. 1958. Copper and brass, 19" high, 21" long.

scuris: *Column*. 1958. Brass, 45" high.

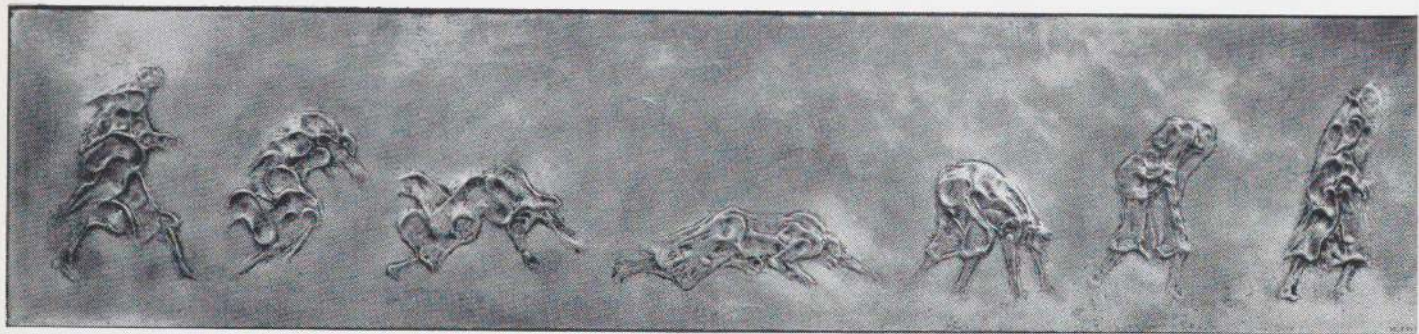




SPAVENTA: *Tenth Street Allegory*. 1958. Bronze, 39" long, 24" high.



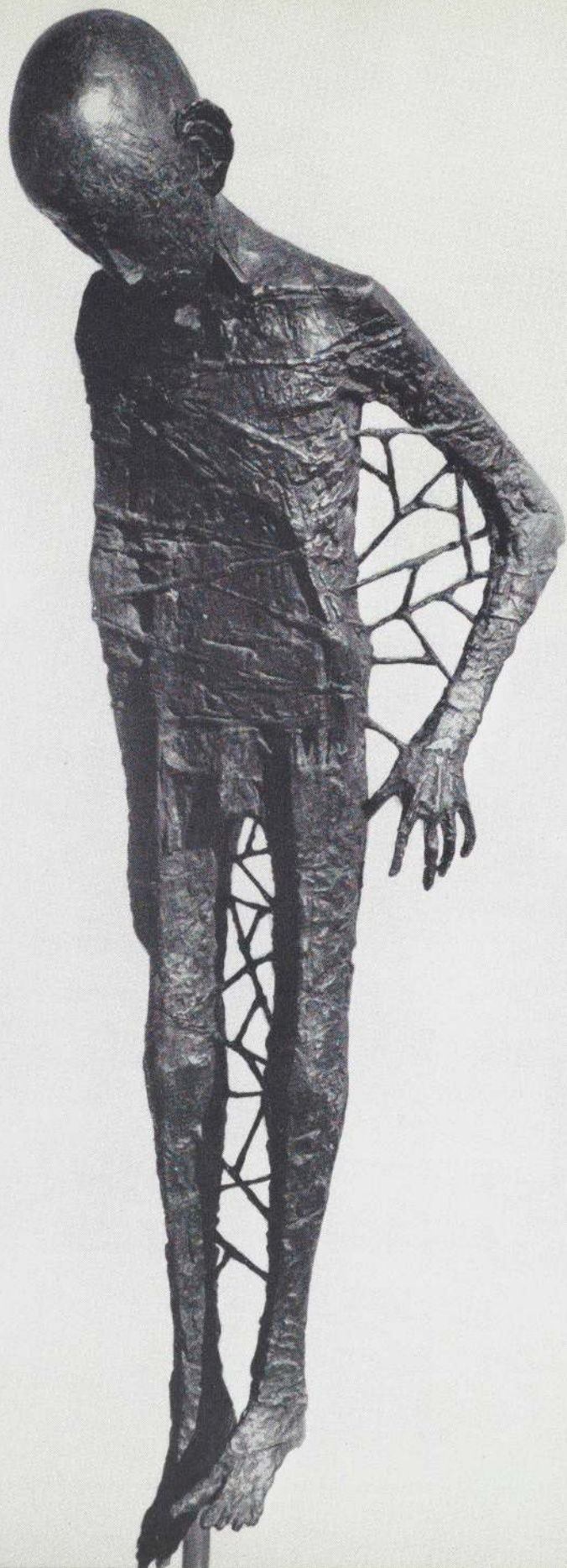
STANKIEWICZ: *Bird Lover in the Grass*. 1957. Steel and iron, 36¼" high, 48" long.



TOVISH: *Walking Man*, 1955. Bronze, 9 x 41".



WEINBERG: *Woman with a Fan*. 1956. Bronze, 12 $\frac{3}{4}$ " high.



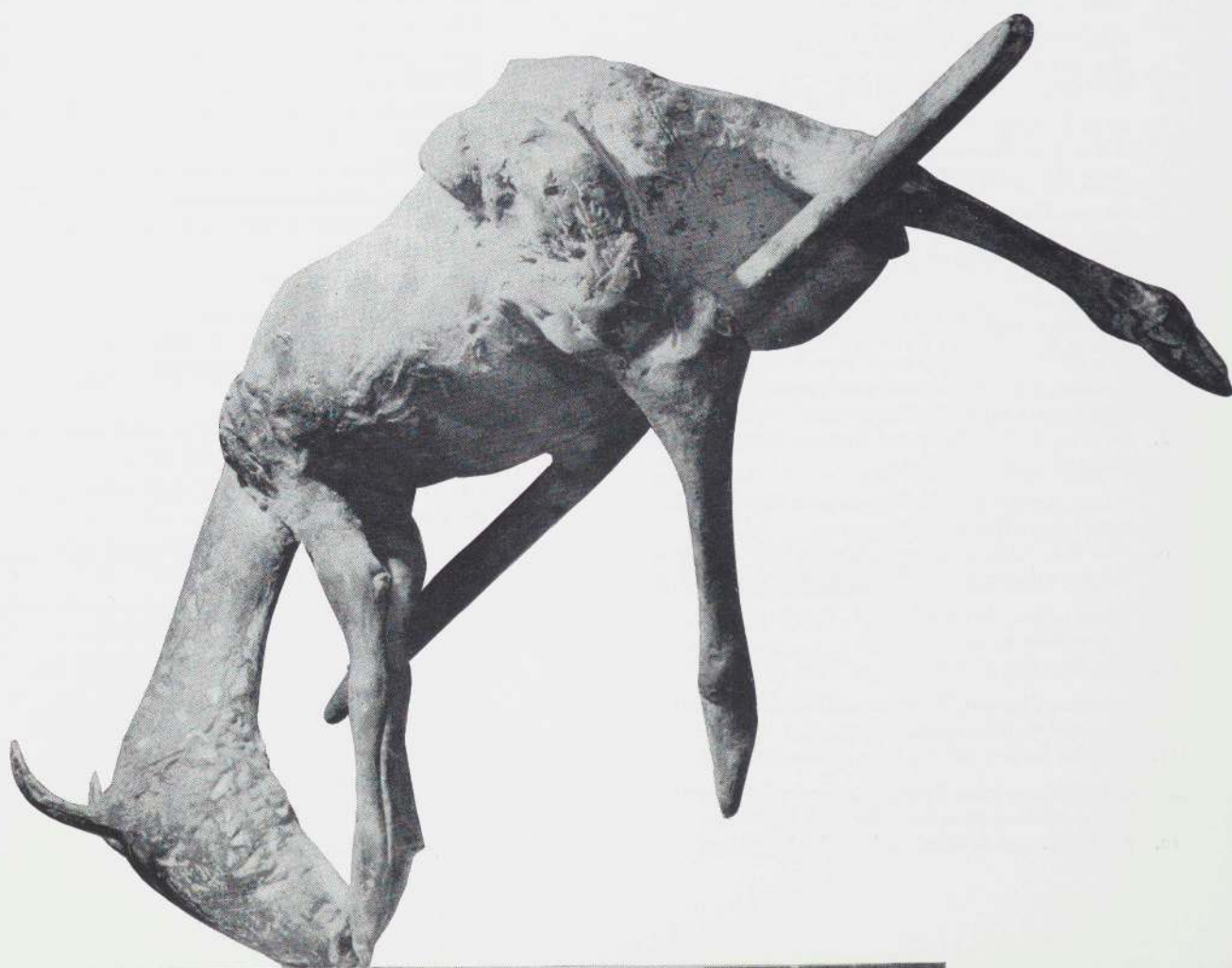
WINES: *Child in a Web*. 1957. Bronze, 3 $\frac{1}{4}$ " high.

ZAJAC: *Easter Goat*. 1957. Bronze, 19 $\frac{1}{2}$ " high, 29" long.

Modern Art



192





CATALOG

An asterisk preceding the catalogue number indicates that the work is illustrated

- ANDREWS, Oliver. Born Berkeley, California, 1925; lives in Santa Monica, California.
1. *Protector*. 1958. Welded bronze, 36" high.
- ASAWA, Ruth. Born Norwalk, California, 1926; lives in San Francisco, California.
2. *Number 10*. 1958. Wire, 6' 6" high.
- BASKIN, Leonard. Born New Brunswick, New Jersey, 1922; lives in Northampton, Massachusetts.
- \*3. *Laureate Standing*. 1957. Cherry, 36" high.
- BEAL, Sondra. Born Dearborn, Michigan, 1936; lives in New York, New York.
4. *First Discovery*. 1958. Wood, 15 1/8" high.
- BERGE, Dorothy. Born Ottawa, Illinois, 1923; lives in Minneapolis, Minnesota.
5. *Head of a Young Girl*. 1956. Welded bronze, 11" high.
- BERTOIA, Harry. Born San Lorenzo, Italy, 1915; lives in Barto, Pennsylvania.
- \*6. *Flower*. 1958. Welded steel, bronze and chrome, 40" high.
7. *Wall Piece*. 1958. Welded steel, bronze and phosphor, 6' 5" high.
- BLOOMER, Kent C. Born Mount Vernon, New York, 1935; lives in Riverside, Connecticut.
8. *Sequence C, Number 1 and Number 2*. 1958. Forged brass, 22" high.
- CALDER, Alexander. Born Philadelphia, Pennsylvania, 1898; lives in Roxbury, Connecticut.
9. *Two White Dots in the Air*. Mobile. 1958. Steel wire and sheet aluminum, 8' 4" long, 10' 10" diameter.
- CALLERY, Mary. Born New York, New York, 1903; lives in New York, New York.
10. *The Flirt*. 1957. Cast bronze, 21" long, 15" high.
- CARLBERG, Norman. Born Roseau, Minnesota, 1928; lives in New Haven, Connecticut.
- \*11. *Minimal Surface Form 2*. 1957. Marble, 13" high.
- CHAMBERLAIN, John. Born Rochester, Indiana, 1927; lives in Southampton, New York.
12. *Rochester*. 1958. Welded steel, 53" high, 77" long.
- DECKER, Lindsey. Born Lincoln, Nebraska, 1923; lives in East Lansing, Michigan.
13. *Yerma III*. 1957. Welded bronze, 40" high, 21" long.
- DEHNER, Dorothy. Born Cleveland, Ohio, 1908; lives in New York, New York.
- \*14. *Rites at Sal Safaeni Number 2*. 1957. Cast bronze, 26 1/2" high.
- DEVICH, Karen. Born Duluth, Minnesota, 1931; lives in San Mateo, California.
15. *Star Net*. 1957. Welded steel, 34" high.
- DURCHANEK, Ludvik. Born Vienna, Austria, 1902; lives in Wassaic, New York.
- \*16. *Mat Wheeler's Wife*. 1957-58. Hammered sheet bronze, 6' 2" high.
- DYER, Carlus. Born Springfield, Missouri, 1917; lives in Norwalk, Connecticut.
- \*17. *Scintillation of Elements*. 1957. Welded steel and bronze, 59 1/2" high.
- ENGMAN, Robert M. Born Belmont, Massachusetts, 1927; lives in Durham, Connecticut.
18. *Distention Number 7*. 1957. Forged Muntz metal, 18" high, 31 1/8" long.
- FEVES, Betty W. Born Whitman County, Washington, 1918; lives in Pendleton, Oregon.
19. *Gathering*. 1957. Stoneware, 21" high.
- FOLLETT, Jean. Born St. Paul, Minnesota, 1917; lives in New York, New York.
20. *Many-headed Creature Number 7*. Relief. 1957. Sand, wire and rope on wood, 24 x 24".
21. *One Soul Walks Alone*. Relief. 1958. Wood, plaster, metal and wire, 15 7/8 x 23 7/8".
- GORDIN, Sidney. Born Cheliabinsk, Russia, 1918; lives in New York, New York.
- \*22. *Number 17*. 1955. Silver-brazed steel, painted black, 56 1/4" high.
- GRANATA, Angelo. Born Hoboken, New Jersey, 1922; lives in University, Alabama.
23. *Arch Form*. 1957. Cast iron, 47 1/4" long, 14 1/2" high.
- HADZI, Dimitri. Born New York, New York, 1921; lives in Rome, Italy.
24. *Elmo I*. 1958. Cast bronze, 14" high.
- \*25. *Scudi II*. 1958. Cast bronze, 36" high.



- HARDY, Tom. Born Redmond, Oregon, 1921; lives in New Orleans, Louisiana.
26. *Old Goat*. 1956. Welded steel, 59" long, 42" high.
- HARKAVY, Minna. Born Talin, Estonia, 1895; lives in New York, New York.
- \*27. *Martyr*. 1954. Cast bronze, 15" high.
28. *Figure of Man*. 1958. Plaster, 50½" high.
- HARRIS, Paul. Born Orlando, Florida, 1925; lives in Glen Ridge, New Jersey.
29. *Garden Hat*. Relief. 1958. Papier maché, 48 x 25", on board 55¼ x 35".
- HAYES, David V. Born Hartford, Connecticut, 1931; lives in Manchester, Connecticut.
- \*30. *Beast*. 1957. Forged steel, 22" high, 22" long.
31. *Sheep Standing*. 1958. Forged steel, 29" high, 36" long.
- HESS, Emil. Born Willock, Pennsylvania, 1913; lives in New York, New York.
32. *Circular Construction*. 1956. Plaster, 49" high.
- HIGGINS, Edward. Born Gaffney, South Carolina, 1930; lives in Long Island City, New York.
- \*33. *The Outside of a Soldier*. 1958. Welded steel and plaster, 24½" high, 23" long.
- HUNT, Richard. Born Chicago, Illinois, 1935; lives in Chicago, Illinois.
34. *Medium Expansive Construction*. 1957. Welded steel, 7' high.
- JACOB, Marion R. Born Sheboygan, Wisconsin, 1925; lives in Bloomfield Hills, Michigan.
- \*35. *Totem*. 1957. Cast bronze, 51¼" high.
- KAISH, Luise. Born Atlanta, Georgia, 1925; lives in New York, New York.
- \*36. *The Blessing*. 1957. Cast bronze, 29" high.
- KING, William. Born Jacksonville, Florida, 1925; lives in New York, New York.
- \*37. *English Girl*. 1956. Cast bronze, 17½" high.
38. *Self Portrait*. 1957. Mahogany, 68" high.
- KOHN, Gabriel. Born Philadelphia, Pennsylvania, 1910; lives in New York, New York.
39. *A Guest in the House*. 1957. Wood and steel, 48¾" high.
- \*40. *Object of the Sea*. 1957. Wood, 62" high, 55" long.
- KONZAL, Joseph. Born Milwaukee, Wisconsin, 1905; lives in New York, New York.
41. *Voyage*. 1957. Cast bronze, 14" high.
- KRISEL, Harold. Born New York, New York, 1920; lives in Long Island City, New York.
- \*42. *Laminate C*. 1957. Lacquered acrylic, 15" long, 11" high.
- KRUGER, Louise. Born Los Angeles, California, 1924; lives in New York, New York.
43. *Newborn Child*. 1957. Welded copper, 8" high.
- LEKBERG, Barbara. Born Portland, Oregon, 1925; lives in New York, New York.
- \*44. *Till Eulenspiegel*. 1958. Welded steel, 25" high.
- LIPCHITZ, Jacques. Born Druskieniki, Lithuania, 1891; lives in Hastings-on-Hudson, New York.
45. *Between Earth and Heaven* (first study). 1957-58. Cast bronze, 46" high.
- LIPTON, Seymour. Born New York, New York, 1903; lives in New York, New York.
- \*46. *Prophet*. 1957. Nickel-silver on Monel metal, 7' 6" high.
- LOVE, Arlene. Born Philadelphia, Pennsylvania, 1931; lives in Conshohocken, Pennsylvania.
47. *Self Portrait with Black Hat*. 1957. Polyester resin and Fiberglas, 12" high.
- MALLARY, Robert. Born Toledo, Ohio, 1917; lives in Albuquerque, New Mexico.
- \*48. *In Flight*. Relief. 1957. Polyester resin, wood, paint and sand, 44 x 80".
49. *Nambe*. Relief. 1958. Polyester resin with various materials, 77 x 49".
- MESSINA, Joseph Antonio. Born New York, New York, 1926; lives in Florence, Italy.
50. *Bird*. 1957. Cast bronze, 24" high, 19½" long.
- NAKIAN, Reuben. Born New York, New York, 1897; lives in Stamford, Connecticut.
51. *The Emperor's Bedchamber*. 1954. Cast bronze, 75" long, 38½" high.
- \*52. *Rape of Lucretia I*. 1958. Terra-cotta, 10" high, 14" long.
- NIVOLA, Costantino. Born Orani, Italy, 1911; lives in New York, New York.
53. *Bas Relief*. 1957. Plaster, 50 x 30".

- PINEDA, Marianna. Born Evanston, Illinois, 1925; lives in Brookline, Massachusetts.
- \*54. *The Sleepwalker*. 1950. Cast bronze, 38" high.
- REIMANN, William P. Born St. Paul, Minnesota, 1935; lives in New Haven, Connecticut.
55. *Constellation*. 1957. Plexiglas, 27" high.
- RICKEY, George. Born South Bend, Indiana, 1907; lives in East Chatham, New York.
- \*56. *Omaggio a Bernini*. Kinetic sculpture. 1958. Stainless steel, 66" high.
- de RIVERA, José. Born New Orleans, Louisiana, 1904; lives in New York, New York.
- \*57. *Construction 56*. 1958. Stainless steel forged rod, 13" high, 17" long.
- RIVERS, Larry. Born New York, New York, 1923; lives in New York, New York.
- \*58. *Head*. 1957. Welded steel, 18" high.
59. *Kabuki in a Rectangle*. 1958. Welded steel, 6' 3" high.
- ROSENTHAL, Bernard. Born Highland Park, Illinois, 1914; lives in Malibu, California.
- \*60. *The Ark*. 1958. Welded red brass, 28" high.
- SATORU, Abe. Born Honolulu, Hawaii, 1926; lives in New York, New York.
- \*61. *Seed*. 1958. Welded copper and brass, 19" high, 21" long.
62. *Web Tree*. 1958. Welded steel, copper and brass, 55 $\frac{7}{8}$ " high.
- SCHULTZ, Moses Richard. Born Lafayette, Indiana, 1926; lives in Barto, Pennsylvania.
63. *Walled City*. 1954. Soldered sheet metal and wire, 8 $\frac{1}{2}$ " high.
- SCURIS, Stephanie. Born Karyai Sparta, Greece, 1931; lives in New Haven, Connecticut.
- \*64. *Column*. 1958. Brass rods, 45" high.
- SELEY, Jason. Born Newark, New Jersey, 1919; lives in New York, New York.
65. *Random Walk*. 1958. Cast aluminum, 35 $\frac{3}{4}$ " high.
- SMITH, David. Born Decatur, Indiana, 1906; lives in Bolton Landing, New York.
66. *Fifteen Planes*. 1957-58. Welded steel, 9' 6 $\frac{3}{4}$ " high.
- SPAVENTA, George. Born New York, New York, 1918; lives in New York, New York.
- \*67. *Tenth Street Allegory*. 1958. Cast bronze, 39" long, 24" high.
- SQUIER, Jack. Born Dixon, Illinois, 1927; lives in Ithaca, New York.
68. *Spitted Animal*. 1955. Cast bronze, 24" long, 19" high.
- STANKIEWICZ, Richard. Born Philadelphia, Pennsylvania, 1922; lives in New York, New York.
- \*69. *Bird Lover in the Grass*. 1957. Welded steel and iron, 36 $\frac{1}{4}$ " high, 48" long.
70. *The Golden Bird is Often Sad*. 1957. Welded steel, 58" high.
- STERN, Lewis Michael. Born Brooklyn, New York, 1930; lives in New York, New York.
71. *Terra Strata II—Mine Shaft*. Relief. 1957. Wood, tar, sponges and foam rubber, 49 $\frac{1}{2}$  x 73 $\frac{1}{2}$ ".
- TELLER, Jane. Born Rochester, New York, 1911; lives in Lahaska, Pennsylvania.
72. *The Stream and the Rock*. 1956. Cherry and ash, 33" long, 11" high.
- TOVISH, Harold. Born New York, New York, 1921; lives in Brookline, Massachusetts.
- \*73. *Walking Man*. Relief. 1955. Cast bronze, 9 x 41", wood frame 17 x 51".
- WEINBERG, Elbert. Born Hartford, Connecticut, 1928; lives in New Haven, Connecticut.
- \*74. *Woman with a Fan*. 1956. Cast bronze, 12 $\frac{3}{4}$ " high.
- WESTERMANN, H. C. Born Los Angeles, California, 1922; lives in Chicago, Illinois.
75. *The Soldier's Dream*. 1956. Wood, brass and glass, 29" high, 15" long.
- WINES, James. Born Oak Park, Illinois, 1932; lives in Rome, Italy.
- \*76. *Child in a Web*. 1957. Cast bronze, 36 $\frac{1}{4}$ " high.
- ZAJAC, Jack. Born Youngstown, Ohio, 1929; lives in Claremont, California.
77. *Bound Goat*. 1956. Cast bronze, 30 $\frac{1}{2}$ " high.
- \*78. *Easter Goat*. 1957. Cast bronze, 19 $\frac{1}{2}$ " high, 29" long.
- ZIEGLER, Laura. Born Columbus, Ohio, 1927; lives in Rome, Italy.
79. *Prophet*. 1958. Cast bronze, 13" high.

CATALOG DESIGN BY NORMAN IVES

PRINTED BY CONNECTICUT PRINTERS, INCORPORATED



