

Making Space: Women Artists and Postwar Abstraction



449.1974
A&D

Magdalena Abakanowicz, Polish, 1930–2017

Yellow Abakan

1967–68

Sisal

124 x 120 x 60" (315 x 304.8 x 152.4 cm)

Gift of Mr. Walter Bareiss, Mrs. Watson K. Blair, Mr. Arthur Cohen,
Mr. Don Page, and Anonymous Donor

Accessioned object



996.2015
P&S

Etel Adnan, American, born Lebanon, 1925

Untitled

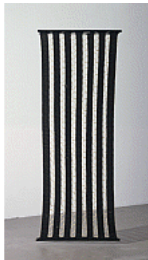
1965/1966

Oil on canvas

21 1/4 x 22 5/8" (54 x 57.5 cm)

Gift of The Riklis Collection of McCrory Corporation and Mrs.
Cornelius J. Sullivan Fund (both by exchange)

Accessioned object



408.1960
A&D

Anni Albers, American, born Germany. 1899–1994

Free-Hanging Room Divider

c. 1949

Cotton, cellophane, and braided horsehair

87 x 32 1/2" (221 x 82.5 cm)

Gift of the designer

Accessioned object



200.1950
A&D

Anni Albers, American, born Germany. 1899–1994

Tapestry

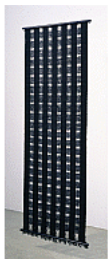
1948

Handwoven linen and cotton

16 1/2 x 18 3/4" (41.9 x 47.6 cm)

Edgar Kaufmann, Jr. Purchase Fund

Accessioned object



409.1960
A&D

Anni Albers, American, born Germany. 1899–1994

Free-Hanging Room Divider

1949

Cellophane and cord

94 x 32 1/2" (238.7 x 82.5 cm)

Gift of the designer

Accessioned object

Making Space: Women Artists and Postwar Abstraction



1203.1967
P&IB

Anni Albers, American, born Germany. 1899–1994

Enmeshed I

1963

Lithograph

composition: 20 1/4 x 27 1/16" (51.4 x 68.7 cm); sheet: 20 1/4 x 27 1/16" (51.4 x 68.7 cm)

Edition: proof outside the edition of 20.

Gift of Kleiner, Bell & Co.

Accessioned object



35.2016
PHOT

Gertrudes Altschul, Brazilian, born Germany. 1904–1962

Lines and Tones (Linhas e Tons)

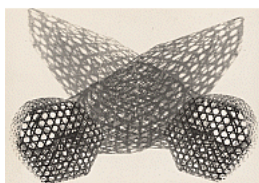
c. 1952

Gelatin silver print

14 7/8 x 11" (37.8 x 27.9 cm)

Acquired through the generosity of Amie Rath Nuttall

Accessioned object



36.2016
PHOT

Gertrudes Altschul, Brazilian, born Germany. 1904–1962

Untitled

c. 1952

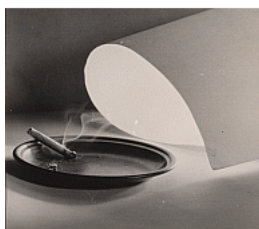
Gelatin silver print

10 13/16 x 15 1/4" (27.5 x 38.7 cm)

Acquired through the generosity of David Dechman and Michel

Mercure

Accessioned object



37.2016
PHOT

Gertrudes Altschul, Brazilian, born Germany. 1904–1962

Untitled

c. 1952

Gelatin silver print

10 13/16 x 12 3/16" (27.5 x 31 cm)

John Szarkowski Fund

Accessioned object



38.2016
PHOT

Gertrudes Altschul, Brazilian, born Germany. 1904–1962

Abstract Concrete (Concreto abstrato)

c. 1952

Gelatin silver print

8 3/8 x 11 3/8" (21.3 x 28.9 cm)

Acquired through the generosity of Thomas and Susan Dunn

Accessioned object

Making Space: Women Artists and Postwar Abstraction



39.2016
PHOT

Gertrudes Altschul, Brazilian, born Germany. 1904–1962

Untitled

c. 1952

Gelatin silver print

11 7/16 × 15 1/4" (29.1 × 38.7 cm)

Acquired through the generosity of Lois Zenkel

Accessioned object



40.2016
PHOT

Gertrudes Altschul, Brazilian, born Germany. 1904–1962

Untitled

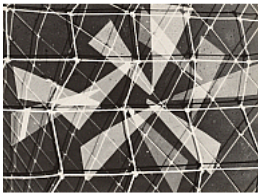
c. 1952

Gelatin silver print

11 13/16 × 15 1/2" (30 × 39.4 cm)

John Szarkowski Fund

Accessioned object



41.2016
PHOT

Gertrudes Altschul, Brazilian, born Germany. 1904–1962

Untitled

c. 1952

Gelatin silver print

11 5/8 × 15 9/16" (29.5 × 39.5 cm)

Acquired through the generosity of Ian Cook

Accessioned object



42.2016
PHOT

Gertrudes Altschul, Brazilian, born Germany. 1904–1962

Untitled

c. 1952

Gelatin silver print

11 3/8 × 11 3/8" (28.9 × 28.9 cm)

Agnes Rindge Claflin Fund

Accessioned object



43.2016
PHOT

Gertrudes Altschul, Brazilian, born Germany. 1904–1962

Untitled

c. 1952

Gelatin silver print

15 1/16 × 11 1/2" (38.3 × 29.2 cm)

John Szarkowski Fund

Accessioned object

Making Space: Women Artists and Postwar Abstraction



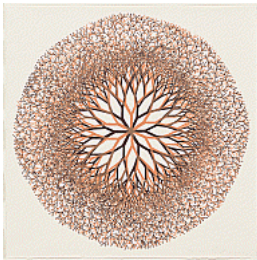
44.2016
PHOT

Gertrudes Altschul, Brazilian, born Germany. 1904–1962
Filigree (Filigrana)
c. 1952
Gelatin silver print
13 5/8 × 11 5/8" (34.6 × 29.5 cm)
Acquired through the generosity of Amie Rath Nuttall
Accessioned object



PG1335.2016
P&S

Ruth Asawa, American, 1926–2013
Untitled
c. 1955
Brass wire, iron wire, and galvanized iron wire
116 × 14 1/2 × 14 1/2" (294.6 × 36.8 × 36.8 cm)
Promised gift of Alice and Tom Tisch
Promised Gift



1591.1967
P&IB

Ruth Asawa, American, 1926–2013
Desert Flower
1965
Lithograph
composition (irreg.): 17 7/16 × 17 1/2" (44.3 × 44.4 cm); sheet: 18 9/16 × 18 9/16" (47.1 × 47.2 cm)
Edition: proof outside the edition of 10.
Gift of Kleiner, Bell & Co.
Accessioned object



495.1969.a-c
P&S

Jo Baer, American, born 1929
Primary Light Group: Red, Green, Blue
1964-65
Oil and synthetic polymer paint on canvas, three panels
Each panel 60 x 60" (152.4 x 152.4 cm)
Philip Johnson Fund
Accessioned object



135.2016
A&D

Lina Bo Bardi, Brazilian, born Italy. 1914–1992
Poltrona Bowl chair
1951
Steel and fabric
21 5/8 × 33 1/16 × 33 1/16" (55 × 84 × 84 cm)
Committee on Architecture and Design Funds
Accessioned object

Making Space: Women Artists and Postwar Abstraction



691.2006
P&S

Lynda Benglis, American, born 1941

Embryo II

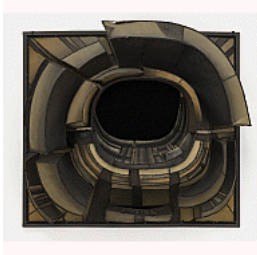
1967

Purified and pigmented beeswax, damar resin, and gesso on masonite

36 1/8 x 6 x 5 1/8" (91.8 x 15.2 x 13 cm)

Gift of Agnes Gund

Accessioned object



398.1963
P&S

Lee Bontecou, American, born 1931

Untitled

1961

Welded steel, canvas, black fabric, rawhide, copper wire, and soot

6' 8 1/4" x 7' 5" x 34 3/4" (203.6 x 226 x 88 cm)

Kay Sage Tanguy Fund

Accessioned object



1267.2016
DRAW

Louise Bourgeois, American, born France. 1911–2010

Self-Portrait as Bird

1945

Oil and ink on cut board with rivets

13 3/16 x 13 3/16" (33.5 x 33.5 cm)

Gift of Jan Christiaan Braun in honor of Kathleen S. Curry

Accessioned object



1047.1969
P&S

Louise Bourgeois, American, born France. 1911–2010

The Quartered One

1964-65

Bronze

58 3/4 x 28 3/8 x 21 3/8" (149 x 72 x 54.1 cm)

(cast 1969)..

Gift of Henriette Bonnotte in memory of Georges Bonnotte

Accessioned object

LN2017.227
CD-CON

Feliza Bursztyn, Colombian, 1933–1982

Untitled (from the series Histéricas)

c. 1967

Stainless steel and electric engine

17 11/16 x 15 3/4 x 19 11/16" (45 x 40 x 50 cm)

Colección Patricia Phelps de Cisneros

On Loan (Incoming)



205.2008
P&S

Lygia Clark, Brazilian, 1920–1988

Planes in Modulated Surface 4

1957

Formica and industrial paint on wood

39 1/4 x 39 1/4" (99.7 x 99.7 cm)

Gift of Patricia Phelps de Cisneros through the Latin American and Caribbean Fund in honor of Kathy Fuld

Accessioned object

Making Space: Women Artists and Postwar Abstraction



1117.2011
P&S

Lygia Clark, Brazilian, 1920–1988

The Inside Is the Outside

1963

Stainless steel

16 x 17 1/2 x 14 3/4" (40.6 x 44.5 x 37.5 cm)

Gift of Patricia Phelps de Cisneros through the Latin American and Caribbean Fund in honor of Adriana Cisneros de Griffin

Accessioned object



SC1951.5
PHOT

Carlotta Corpron, American, 1901–1987

Fluid Light Design, Fluid Rhythm

c. 1950

Gelatin silver print

13 1/4 x 10 5/8" (33.7 x 27 cm)

Gift of the artist

Study Collection



1087.2015
A&D

Lucienne Day, British, 1917–2010

Causeway

1967

Screen-printed cotton crepe

117 3/4 x 48 1/4" (299.1 x 122.6 cm)

Gift of Jill A. Wiltse and H. Kirk Brown III

Accessioned object



120.1961
DRAW

Elaine de Kooning, American, 1920–1989

Bullfight

1960

Acrylic on paper

19 1/4 x 24 5/8" (49 x 62.5 cm)

Larry Aldrich Foundation Fund

Accessioned object



190.1994
PHOT

Jay DeFeo, American, 1929–1989

Blossom

1958

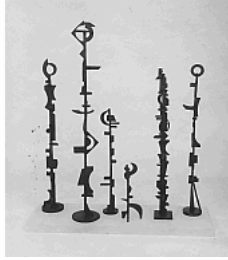
Collage of photomechanical reproductions

43 1/8 x 33 7/8" (109.5 x 86 cm)

The Fellows of Photography Fund and The Family of Man Fund

Accessioned object

Making Space: Women Artists and Postwar Abstraction



544.2010.a-f
P&S

Dorothy Dehner, American, 1901–1994

Encounter

1969

Bronze, six parts

Each 50 x 7 x 7" (127 x 17.8 x 17.8 cm), 40 x 6 x 6" (101.6 x 15.2 x 15.2 cm), 39 x 5 x 5" (99.1 x 12.7 x 12.7 cm), 38 x 4 1/2 x 4 1/2" (96.5 x 11.4 x 11.4 cm), 27 1/2 x 5 x 4 1/2" (69.9 x 12.7 x 11.4 cm), and 14 1/2 x 5 x 4" (36.8 x 12.7 x 10.2 cm)

Committee on Painting and Sculpture Funds and partial gift of the Dorothy Dehner Foundation for the Visual Arts
Accessioned object



189.1956
P&S

Helen Frankenthaler, American, 1928–2011

Trojan Gates

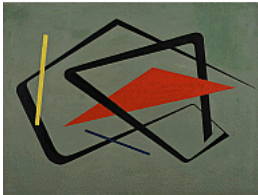
1955

Oil and enamel on canvas

6' x 48 7/8" (182.9 x 124.1 cm)

Gift of Mr. and Mrs. Allan D. Emil

Accessioned object



PG812.2016
P&S

María Freire, Uruguayan, 1917–2015

Untitled

1954

Oil on canvas

36 1/4 x 48 1/16" (92 x 122 cm)

Promised gift of Patricia Phelps de Cisneros through the Latin American and Caribbean Fund in honor of Gabriel Pérez-Barreiro
Promised Gift



223.1967
P&IB

Gego (Gertrud Goldschmidt), Venezuelan, born Germany.

1912–1994

Balance

1960

Etching

plate: 9 13/16 x 8 3/4" (25 x 22.2 cm); sheet: 14 15/16 x 11 1/8" (38 x 28.3 cm)

Edition: 10.

Inter-American Fund

Accessioned object



PG813.2016
P&S

Gego (Gertrud Goldschmidt), Venezuelan, born Germany.

1912–1994

Eight Squares

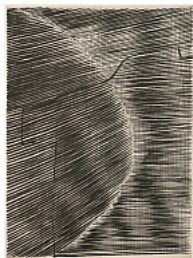
1961

Painted iron

66 15/16 x 25 3/16 x 15 3/4" (170 x 64 x 40 cm)

Promised gift of Patricia Phelps de Cisneros through the Latin American and Caribbean Fund in honor of Gustavo Rodríguez-Cisneros
Promised Gift

Making Space: Women Artists and Postwar Abstraction



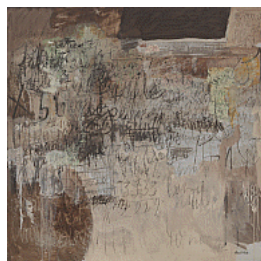
2416.2001
DRAW

Gego (Gertrud Goldschmidt), Venezuelan, born Germany. 1912–1994
Untitled
1963
Ink on paper
30 x 22" (76.2 x 55.9 cm)
Committee on Drawings Funds
Accessioned object



PG824.2016
P&S

Elsa Gramcko, Venezuelan, 1925–1994
Untitled
1957
Oil on canvas
39 3/8 x 13" (100 x 33 cm)
Promised gift of Patricia Phelps de Cisneros through the Latin American and Caribbean Fund
Promised Gift



4.2016
P&S

Sarah Grilo, Argentine, 1919–2007
Add
1965
Oil on canvas
59 13/16 x 59 13/16" (152 x 152 cm)
Latin American and Caribbean Fund
Accessioned object



6.1960
P&S

Grace Hartigan, American, 1922–2008
Shinnecock Canal
1957
Oil on canvas
7' 6 1/2" x 6' 4" (229.8 x 193 cm)
Gift of James Thrall Soby
Accessioned object



972.2005
P&S

Carmen Herrera, Cuban, born 1915
Untitled
1952
Synthetic polymer paint on canvas
25 x 60" (63.5 x 152.4 cm)
Gift of Agnes Gund and Tony Bechara
Accessioned object

Making Space: Women Artists and Postwar Abstraction



261.1983
P&S

Eva Hesse, American, born Germany. 1936–1970

Untitled

1966

Enamel paint and string over papier-mâché with elastic cord
Overall approximately 33 1/2 x 26 x 2 1/2" (85 x 65.9 x 6.4 cm)
Ruth Vollmer Bequest
Accessioned object



357.1966
A&D

Sheila Hicks, American, born 1934

Prayer Rug

1965

Hand-spun wool
87 x 43" (221 x 109.2 cm)
Gift of Dr. Mittelsten Schied
Accessioned object



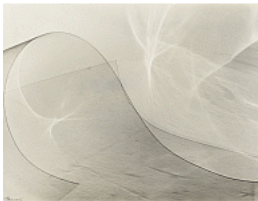
475.1960
PHOT

Lotte Jacobi, American, born Germany. 1896–1990

Abstraction #4

c. 1945-48

Gelatin silver print
9 3/4 x 7 7/8" (24.8 x 19.8 cm)
Gift of Mrs. Charles Liebman
Accessioned object



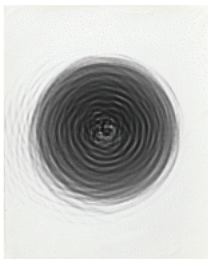
377.1972
PHOT

Lotte Jacobi, American, born Germany. 1896–1990

Photogenic

c. 1950

Gelatin silver print
7 3/8 x 9 1/2" (18.7 x 24.2 cm)
Gift of the artist
Accessioned object



303.2013
PHOT

Běla Kolářová, Czech, 1923–2010

Radiogram of Circle

1962-63

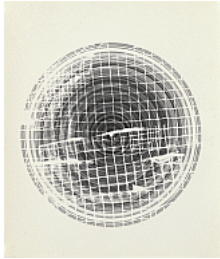
Gelatin silver print
9 9/16 x 7" (24.3 x 17.8 cm)
Gift of Martin Helcl, Prague
Accessioned object

Making Space: Women Artists and Postwar Abstraction



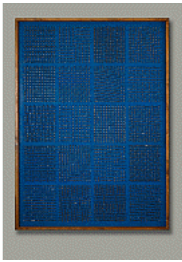
304.2013
PHOT

Běla Kolářová, Czech, 1923–2010
Radiogram of Circle
1962-63
Gelatin silver print
23 5/8 x 19 7/8" (60 x 50.5 cm)
Acquired through the generosity of Marie-Josée Kravis
Accessioned object



306.2013
PHOT

Běla Kolářová, Czech, 1923–2010
Radiogram of Circle
1962-63
Gelatin silver print
10 11/16 x 9 1/16" (27.1 x 23 cm)
Gift of Martin Heldl, Prague
Accessioned object



1181.2012
P&S

Běla Kolářová, Czech, 1923–2010
Five by Four
1967
Wood, paint, and metal paper fasteners
56 5/16 x 39 9/16" (143 x 100.5 cm)
Gift of Marie-Josée and Henry R. Kravis
Accessioned object



212.1977
P&S

Lee Krasner, American, 1908–1984
Gaea
1966
Oil on canvas
69" x 10' 5 1/2" (175.3 x 318.8 cm)
Kay Sage Tanguy Fund
Accessioned object



785.2006
DRAW

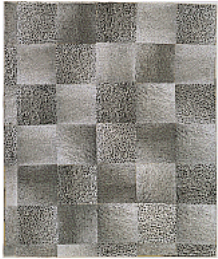
Yayoi Kusama, Japanese, born 1929
Infinity Nets
1951
Ink on paper
15 1/2 x 10 1/8" (39.4 x 25.7 cm)
Purchased with funds provided by Jo Carole and Ronald S. Lauder
Accessioned object

Making Space: Women Artists and Postwar Abstraction



646.1997
P&S

Yayoi Kusama, Japanese, born 1929
No. F
1959
Oil on canvas
41 1/2 x 52" (105.4 x 132.1 cm)
Sid R. Bass Fund
Accessioned object



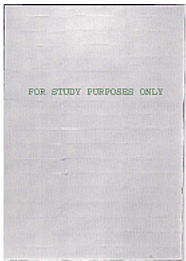
286.1996
PHOT

Yayoi Kusama, Japanese, born 1929
Accumulation of Nets (No. 7)
1962
Collage of gelatin silver prints
29 x 24 1/2" (73.7 x 62.2 cm)
Gift of Agnes Gund
Accessioned object



5.1965
P&S

Agnes Martin, American, born Canada. 1912–2004
The Tree
1964
Oil and pencil on canvas
6 x 6' (182.8 x 182.8 cm)
Larry Aldrich Foundation Fund
Accessioned object



505.1965
P&S

Eleanore Mikus, American, born 1927
Tablet Number 84
1964
Synthetic polymer paint on composition-board sections
51 5/8 x 35 7/8" (131.1 x 90.9 cm)
Gift of Louise Nevelson
Accessioned object



385.1961
P&S

Joan Mitchell, American, 1925–1992
Ladybug
1957
Oil on canvas
6' 5 7/8" x 9' (197.9 x 274 cm)
Purchase
Accessioned object

Making Space: Women Artists and Postwar Abstraction



384.1972
PHOT

Barbara Morgan, American, 1900–1992
Solstice
1942
Gelatin silver print, printed 1971
15 11/16 x 10 11/16" (39.8 x 27.2 cm)
Gift of the photographer
Accessioned object



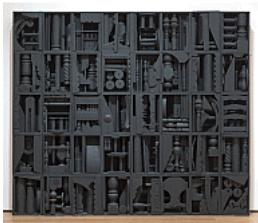
352.1950
A&D

Gertrud Natzler, American, born Austria. 1908–1971
Otto Natzler, American, born Austria. 1908–2007
Bowl (no. A713)
1949
Glazed ceramic
2 1/4 x 4 3/8" (5.7 x 11.1 cm)
Gift of Edgar Kaufmann, Jr.
Accessioned object



600.1965
A&D

Gertrud Natzler, American, born Austria. 1908–1971
Otto Natzler, American, born Austria. 1908–2007
Bowl (no. L637)
1961
"Crater" glazed ceramic
4 x 7 3/8" (10.2 x 18.7 cm)
Gift of G. David Thompson
Accessioned object



229.1991.a-nn
P&S

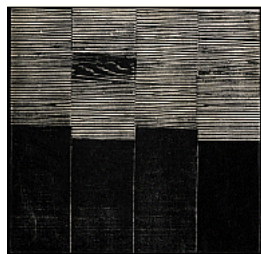
Louise Nevelson, American, born Ukraine. 1899–1988
Big Black
1963
Painted wood
9' 1/4" x 10' 5 3/4" x 12" (274.9 x 319.5 x 30.5 cm)
Gift of Vera G. List
Accessioned object



PG1897.2008.a-i
P&S

Lygia Pape, Brazilian, 1927–2004
Orange
1955
Oil and tempera on board, nine panels
Each 15 5/8 x 15 5/8 x 1 1/2" (39.7 x 39.7 x 3.8 cm)
Promised gift of Marie-Josée and Henry R. Kravis through the
Latin American and Caribbean Fund
Promised Gift

Making Space: Women Artists and Postwar Abstraction



PG595.2013
P&IB

Lygia Pape, Brazilian, 1927–2004

Untitled from the series Weavings (Tecelares)

1959

Woodcut

sheet: 9 5/8 x 9 3/4" (24.4 x 24.8 cm)

Edition: few known impressions.

Promised gift of Patricia Phelps de Cisneros through the Latin American and Caribbean Fund

Promised Gift



TR15857
DRAW-TR

Pat Passlof, American, 1928–2011

Untitled

c. 1950

Oil on paper

22 5/8 x 28 5/8" (57.5 x 72.7 cm)

Gift of the Milton Resnick and Pat Passlof Foundation

On Loan (Incoming)



224.2011
P&S

Lidy Prati, Argentine, 1921–2008

Vibrational Structure from a Circle, Series B

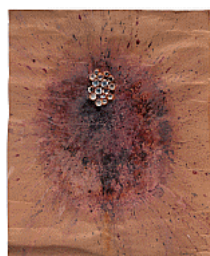
1951

Oil on canvas

31 1/2 x 11 13/16" (80 x 30 cm)

Latin American and Caribbean Fund

Accessioned object



1790.2012
DRAW

Carol Rama, Italian, 1918–2015

Spurting Out (Schizzano via)

1967

Ink, gouache, shellac, and plastic doll eyes on paper

24 x 19 1/2" (61 x 49.5 cm)

Gift of Dean Valentine and Amy Adelson

Accessioned object



13.1999
DRAW

Barbara Chase-Riboud, American, born 1939

Untitled

1967

Pencil and charcoal on paper

11 1/8 x 10 1/4" (28 x 26 cm)

Gift of The Grace M. Mayer Collection

Accessioned object

Making Space: Women Artists and Postwar Abstraction



215.1954
A&D

Lucie Rie, British, born Austria. 1902–1995
Vase
c. 1950
Glazed stoneware
6 1/4 x 7 5/16 x 5 1/2" (15.9 x 18.6 x 14 cm)
Purchase Fund
Accessioned object



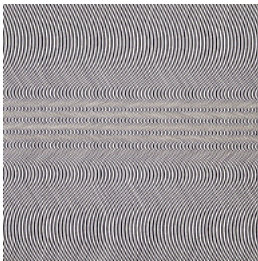
457.1987
A&D

Lucie Rie, British, born Austria. 1902–1995
Bowl
1952-54
Glazed stoneware
2 1/4 x 4 5/8" (5.7 x 11.7 cm)
Gift of Arthur Drexler
Accessioned object



216.1954
A&D

Lucie Rie, British, born Austria. 1902–1995
Bowl
c. 1953
Glazed porcelain
3 3/4 x 5 1/2" (9.5 x 14 cm)
Purchase Fund
Accessioned object



576.1964
P&S

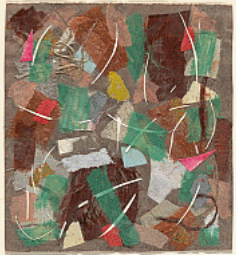
Bridget Riley, British, born 1931
Current
1964
Synthetic polymer paint on composition board
58 3/8 x 58 7/8" (148.1 x 149.3 cm)
Philip Johnson Fund
Accessioned object



761.1978
DRAW

Anne Ryan, American, 1889–1954
Collage, 256
1949
Cut-and-pasted colored and printed papers, cloth, and string on paper
6 3/4 x 5 1/2" (17.3 x 14.2 cm)
Gift of Elizabeth McFadden
Accessioned object

Making Space: Women Artists and Postwar Abstraction



762.1978
DRAW

Anne Ryan, American, 1889–1954

Collage, 353

1949

Cut-and-pasted colored paper, cloth, and string on paper

7 1/2 x 6 7/8" (19 x 17.5 cm)

Gift of Elizabeth McFadden

Accessioned object



773.1978
DRAW

Anne Ryan, American, 1889–1954

Collage, 585

1949

Cut-and-pasted paper, colored and printed papers, and cloth on paper

7 1/8 x 7 3/8" (18.1 x 18.6 cm)

Gift of Elizabeth McFadden

Accessioned object



759.1978
DRAW

Anne Ryan, American, 1889–1954

Collage, 225

1950

Cut-and-pasted colored paper, cloth, string, and sandpaper on paper

7 x 5 7/8" (18 x 14.9 cm)

Gift of Elizabeth McFadden

Accessioned object



SC1953.23
PHOT

Naomi Savage, American, 1927–2005

Untitled (lights reflected in water)

Gelatin silver print

8 x 10" (20.3 x 25.4 cm)

Purchase

Study Collection



2453.2001
DRAW

Mira Schendel, Brazilian, born Switzerland. 1919–1988

Untitled (Red)

1964

Oil transfer drawing on paper

18 1/2 x 9" (47 x 22.9 cm)

Gift of Luisa Strina in memory of Lydia and Ferdinando Strina

Accessioned object

Making Space: Women Artists and Postwar Abstraction



68.2005
P&S

Mira Schendel, Brazilian, born Switzerland. 1919–1988

Untitled from the series Droguinhas (Little Nothings)

c. 1964–66

Japanese paper

Dimensions variable, approximately 35 1/2 x 27 1/2" (90 x 70 cm)

Scott Burton Fund

Accessioned object



110.2005
DRAW

Mira Schendel, Brazilian, born Switzerland. 1919–1988

Untitled

c. 1964–65

Oil transfer drawing on paper

18 1/2 x 9 1/2" (47 x 24.1 cm)

Purchase

Accessioned object



115.2005
DRAW

Mira Schendel, Brazilian, born Switzerland. 1919–1988

Untitled from the series Letters and Lines (Letras e Linhas)

c. 1964–65

Oil transfer drawing on paper

18 1/2 x 9 1/8" (47 x 23.2 cm)

Purchase

Accessioned object



121.2005
DRAW

Mira Schendel, Brazilian, born Switzerland. 1919–1988

Untitled

1964

Oil transfer drawing on paper

18 1/2 x 9 1/2" (47 x 24.1 cm)

Purchase

Accessioned object



122.2005
DRAW

Mira Schendel, Brazilian, born Switzerland. 1919–1988

Untitled

1964

Oil transfer drawing on paper

18 1/2 x 9 1/2" (47 x 24.1 cm)

Purchase

Accessioned object

Making Space: Women Artists and Postwar Abstraction



128.2005
DRAW

Mira Schendel, Brazilian, born Switzerland. 1919–1988
Untitled from the series Letters and Lines (Letras e Linhas)
1966
Oil transfer drawing on paper
18 1/2 x 9 1/8" (47 x 23.2 cm)
Purchase
Accessioned object



193.1987
P&S

Janet Sobel, American, born Ukraine. 1894–1968
Untitled
c. 1946
Oil and enamel on composition board
18 x 14" (45.5 x 35.5 cm)
Gift of William Rubin
Accessioned object



558.1954
P&S

Hedda Sterne, American, born Romania 1910–2011
New York, VIII
1954
Synthetic polymer paint on canvas
6' 1/8" x 42" (183.2 x 106.7 cm)
Mr. and Mrs. Roy R. Neuberger Fund
Accessioned object



2055.1967.8
P&IB

Hedda Sterne, American, born Romania 1910–2011
Untitled from Metaphores and Metamorphoses
1967
One from a portfolio of nine lithographs
composition and sheet: 20 1/16 x 20 1/16" (51 x 51 cm)
Edition: proof outside the edition of 20.
Gift of Kleiner, Bell & Co.
Accessioned object



PG210.2008.a-e
P&S

Alina Szapocznikow, Polish, 1926–1973
Belly-Cushions
1968
Polyurethane, five parts
Each part 5 1/8" to 7" x 11 7/8" x 13 1/2" (13 to 18 x 30 x 34 cm)
Promised gift of Marie-Josée and Henry R. Kravis
Promised Gift

Making Space: Women Artists and Postwar Abstraction



21.2010
DRAW

Atsuko Tanaka, Japanese, 1932–2005

Untitled

1956

Watercolor and felt-tip pen on paper

42 7/8 x 30 3/8" (108.9 x 77.2 cm)

Purchased with funds provided by the Edward John Noble Foundation, Frances Keech Fund, and Committee on Drawings Funds

Accessioned object



512.1975
A&D

Lenore Tawney, American, 1907–2007

Little River Wall Hanging

1968

Linen

91 1/2 x 21" (232.4 x 53.3 cm)

Gift of the designer

Accessioned object



299.2015
DRAW

Alma Woodsey Thomas, American, 1891–1978

Untitled

c. 1968

Acrylic and pressure-sensitive tape on cut-and-stapled paper

19 1/8 x 51 1/2" (48.6 x 130.8 cm)

Gift of Donald B. Marron

Accessioned object



285.2009.1
DRAW

Anne Truitt, American, 1921–2004

Sumi Drawing

1966

Ink on paper

27 1/4 x 11" (69.2 x 27.9 cm)

Committee on Drawings Funds

Accessioned object



285.2009.2
DRAW

Anne Truitt, American, 1921–2004

Sumi Drawing

1966

Ink on paper

27 1/4 x 13 3/4" (69.2 x 34.9 cm)

Committee on Drawings Funds

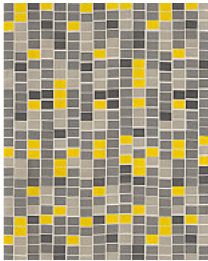
Accessioned object

Making Space: Women Artists and Postwar Abstraction



285.2009.3
DRAW

Anne Truitt, American, 1921–2004
Sumi Drawing
1966
Ink on paper
27 1/4 x 8 1/4" (69.2 x 21 cm)
Committee on Drawings Funds
Accessioned object



517.1975
A&D

Vera (Vera Neumann), American, 1909–1993
Stone on Stone
c. 1950-55
Printed silk
64 1/2 x 48" (163.8 x 121.9 cm)
Gift of the manufacturer
Accessioned object



515.1975
A&D

Vera (Vera Neumann), American, 1909–1993
Stone on Stone
c. 1950
Printed linen
68 1/2 x 43" (174 x 109.2 cm)
Gift of Printex Corporation
Accessioned object