

The Museum of Modern Art

Print/Out

The Museum of Modern Art, New York February 19, 2012-May 14, 2012
6th Floor, Special Exhibitions, North



MARINA ABRAMOVIC (Yugoslav, born 1946)

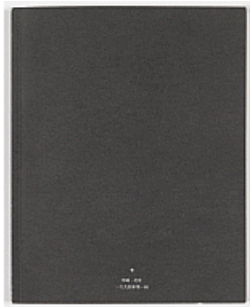
Spirit Cooking

1996

Portfolio of eight etchings (four with aquatint and one with gold leaf) and four aquatints with chine collé; and 25 letterpress prints

plate: see child records; sheet (each): 12 3/8 x 10 15/16" (31.5 x 27.8 cm)

The Museum of Modern Art, New York. Monroe Wheeler Fund



AI WEIWEI (Chinese, born 1957)

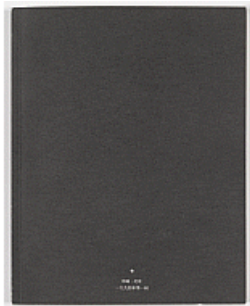
The Black Cover Book

1994

Artist's book

page (each): 9 x 7" (22.9 x 17.8 cm); overall (closed): 9 x 7 3/16 x 3/8" (22.9 x 18.2 x 1 cm)

The Museum of Modern Art, New York. Gift of the artist, Beijing



AI WEIWEI (Chinese, born 1957)

The Black Cover Book

1994

Artist's book

page: 9 x 7" (22.9 x 17.8 cm); overall: 9 x 7 3/16 x 3/8" (22.9 x 18.3 x 1 cm)

Asia Art Archive, Hong Kong



AI WEIWEI (Chinese, born 1957)

The White Cover Book

1995

Artist's book

page (each): 9 x 7" (22.9 x 17.8 cm); overall (closed): 9 x 7 3/16 x 1/2" (22.9 x 18.2 x 1.2 cm)

The Museum of Modern Art, New York. Gift of the artist, Beijing



AI WEIWEI (Chinese, born 1957)

The White Cover Book

1995

Artist's book

page: 9 x 7" (22.9 x 17.8 cm); overall: 9 x 7 3/16 x 1/2" (22.9 x 18.3 x 1.3 cm)

Asia Art Archive, Hong Kong



AI WEIWEI (Chinese, born 1957)

The Grey Cover Book

1997

Artist's book

page (each): 9 x 6 7/8" (22.8 x 17.5 cm); overall (closed): 9 x 7 x 7/16" (22.8 x 17.8 x 1.1 cm)

The Museum of Modern Art, New York. Gift of the artist, Beijing



AI WEIWEI (Chinese, born 1957)

The Grey Cover Book

1997

Artist's book

page: 9 x 7" (22.9 x 17.8 cm); overall: 9 x 7 x 7/16" (22.9 x 17.8 x 1.1 cm)

Asia Art Archive, Hong Kong



AI WEIWEI (Chinese, born 1957)

Fuck Off

2000

Exhibition catalogue

page (each): 9 3/4 x 8 3/16" (24.8 x 20.8 cm); overall (closed): 9 3/4 x 8 1/4 x 11/16" (24.8 x 21 x 1.8 cm)

The Museum of Modern Art, New York. Gift of the artist, Beijing



NOBUYOSHI ARAKI (Japanese, born 1940)

Untitled from the Museum in Progress project Travelling Eye

(magazine published: April 15, 1996)

Page: 11 x 8 1/2" (27.9 x 21.6 cm)

The Museum of Modern Art, New York. Linda Barth Goldstein Fund



ALIGHIERO E BOETTI (Italian, 1940-1994)
Cieli ad alta quota No. 1-6 from Museum in Progress
 1993
 Six Sky Lines magazines and six jigsaw puzzles
 magazine (each, closed): 10 11/16 x 8 1/4 x 3/16" (27.2 x 21 x 0.4 cm);
 composition (magazine spread): 10 13/16 x 16 1/8" (27.4 x 41 cm); puzzle
 (each approx.): 8 1/8 x 10 11/16 x 3/16" (20.6 x 27.2 x 0.5 cm)
 The Museum of Modern Art, New York. Linda Barth Goldstein Fund



CHRIS BURDEN (American, born 1946)
Coyote Stories
 2005
 Portfolio of ten etchings, five with aquatint, and 25 digital prints with chine collé
 plate: (see child records); sheet (each): 14 15/16 x 12 3/8" (38 x 31.5 cm)
 The Museum of Modern Art, New York. Monroe Wheeler Fund



Permanent Food #1
 (August 1996)
 Artist magazine
 Page: 10 x 7" (25.4 x 17.8 cm)
 Collection Philip Aarons and Shelley Fox Aarons, New York



Permanent Food #2
 (March 1996)
 Artist magazine
 Page: 9 1/4 x 6 3/4" (23.5 x 17.1 cm)
 Collection Philip Aarons and Shelley Fox Aarons, New York



Permanent Food #3
 October 1996
 Artist magazine
 Page: 9 1/4 x 6 3/4" (23.5 x 17.1 cm)
 Collection Philip Aarons and Shelley Fox Aarons, New York



Permanent Food #4

1996

Artist magazine

Collection Philip Aarons and Shelley Fox Aarons, New York

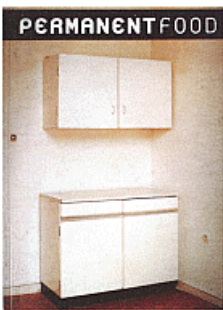


Permanent Food #5

1997

Artist magazine

Collection Philip Aarons and Shelley Fox Aarons, New York



Permanent Food #6

1998

Artist magazine

Collection Philip Aarons and Shelley Fox Aarons, New York



Permanent Food #7

1998

Artist magazine

Collection Philip Aarons and Shelley Fox Aarons, New York



Permanent Food #8

2000-2001

Artist magazine

Collection Philip Aarons and Shelley Fox Aarons, New York



Permanent Food #10

2003

Artist magazine

Collection Philip Aarons and Shelley Fox Aarons, New York



Permanent Food #9

2003

Artist magazine

Collection Philip Aarons and Shelley Fox Aarons, New York



Permanent Food Supplement to Vogue Italia, no. 634

2003

Artist magazine

Page: 10 3/4 x 8 1/4" (27.3 x 21 cm)

Collection Philip Aarons and Shelley Fox Aarons, New York



Permanent Food #11

2004

Artist magazine

Collection Philip Aarons and Shelley Fox Aarons, New York



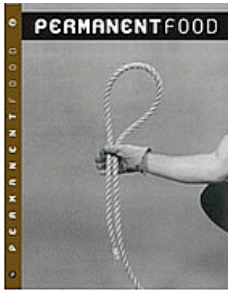
Permanent Food #12

2004

Artist magazine

Page: 11 x 8" (27.9 x 20.3 cm)

Collection Philip Aarons and Shelley Fox Aarons, New York



Permanent Food #14

2005

Artist magazine

Collection Philip Aarons and Shelley Fox Aarons, New York



Permanent Food #15

2007

Artist magazine

Page: 10 3/4 x 8" (27.3 x 20.3 cm)

Collection Philip Aarons and Shelley Fox Aarons, New York



CLAUDE CLOSKY (French, born 1963)

Beautiful Face from the Museum in Progress project Global Positions
(newspaper published October 7, 2000)

Lithograph, offset printed

sheet (each): 18 1/2 x 12 3/8" (47 x 31.5 cm)

The Museum of Modern Art, New York. Linda Barth Goldstein Fund



ROBERTO CUOGHI (Italian, born 1973)

Untitled from the Museum in Progress project Global Positions
(newspaper published December 27, 1999)

Lithograph, offset printed

sheet (each): 18 1/2 x 12 3/8" (47 x 31.5 cm)

The Museum of Modern Art, New York. Linda Barth Goldstein Fund



TRISHA DONNELLY (American, born 1974)

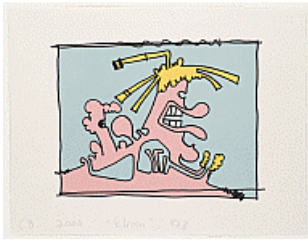
Satin Operator

2007

Series of thirteen digital prints

sheet (each): 62 1/2 x 44" (158.8 x 111.8 cm)

The Museum of Modern Art, New York. The Print Associates Fund and General Print Fund



CARROLL DUNHAM (American, born 1949)

Eleven from Female Portraits

2000

One from a portfolio of thirteen lithographs

composition (irreg.): 9 5/16 x 12 5/16" (23.6 x 31.3 cm); sheet: 13 5/16 x 17 1/4" (33.8 x 43.8 cm)

The Museum of Modern Art, New York. Gift of Emily Fisher Landau



CARROLL DUNHAM (American, born 1949)

Nine from Female Portraits

2000

One from a portfolio of thirteen lithographs

composition (irreg.): 10 1/16 x 8 1/16" (25.6 x 20.5 cm); sheet: 17 5/16 x 13 3/16" (44 x 33.5 cm)

The Museum of Modern Art, New York. Gift of Emily Fisher Landau



CARROLL DUNHAM (American, born 1949)

One from Female Portraits

2000

One from a portfolio of thirteen lithographs

composition (irreg.): 10 13/16 x 8 3/4" (27.5 x 22.3 cm); sheet: 17 1/8 x 13 1/4" (43.5 x 33.6 cm)

The Museum of Modern Art, New York. Gift of Emily Fisher Landau



CARROLL DUNHAM (American, born 1949)

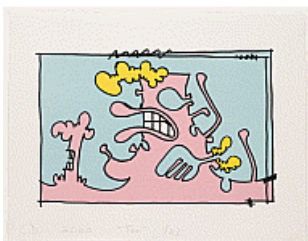
Six from Female Portraits

2000

One from a portfolio of thirteen lithographs

composition (irreg.): 10 15/16 x 9 7/8" (27.8 x 25.1 cm); sheet: 16 15/16 x 13 1/16" (43 x 33.1 cm)

The Museum of Modern Art, New York. Gift of Emily Fisher Landau



CARROLL DUNHAM (American, born 1949)

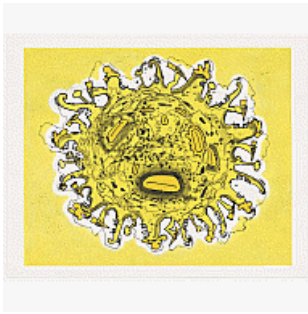
Ten from Female Portraits

2000

One from a portfolio of thirteen lithographs

composition (irreg.): 9 3/16 x 13 1/2" (23.3 x 34.3 cm); sheet: 13 1/4 x 17 5/16" (33.6 x 43.9 cm)

The Museum of Modern Art, New York. Gift of Emily Fisher Landau



CARROLL DUNHAM (American, born 1949)

The Sun

2000-01

Digital print

composition: 38 7/8 x 47 9/16" (98.7 x 120.8cm); sheet: 42 15/16 x 53 9/16" (109 x 136cm)

The Museum of Modern Art, New York. Gift of Emily Fisher Landau



CARROLL DUNHAM (American, born 1949)

Twelve from Female Portraits

2000

One from a portfolio of thirteen lithographs

composition (irreg.): 10 13/16 x 9 3/4" (27.4 x 24.8 cm); sheet: 17 1/8 x 13 1/4" (43.5 x 33.7 cm)

The Museum of Modern Art, New York. Gift of Emily Fisher Landau



HANS-PETER FELDMANN (German, born 1941)

Untitled from the Museum in Progress project Interventions in progress

(newspaper published April 3, 1998)

Lithograph, offset printed

Composition (irreg.): 16 11/16 x 22 5/16" (42.4 x 56.7 cm); page (unfolded): 18 3/8 x 24 13/16" (46.7 x 63 cm)

The Museum of Modern Art, New York. Linda Barth Goldstein Fund



HANS-PETER FELDMANN (German, born 1941)

Profil no. 6, February 2, 2000 (without words) from the Museum in Progress

profil without words

2000

Magazine

sheet: 11 1/8 x 8 1/4" (28.2 x 21 cm)

The Museum of Modern Art, New York. Linda Barth Goldstein Fund



GENERAL IDEA (Canadian)

Magi© Bullet

1992

Installation of custom-shaped Mylar balloons

dimensions variable

The Museum of Modern Art, New York. Gift of Mark Krayenhoff



LIAM GILLICK (British, born 1964)
Construction of One from the Museum in Progress project Rolling Boards
 (newspapers published October 19, 2004 through April 12, 2005)
 7 lithographs, offset printed
 Sheet (514.2006.399.a): 18 1/2 x 12 7/16" (47 x 31.6 cm)
 Sheet (514.2006.399.b): 18 1/2 x 12 7/16" (47 x 31.6 cm)
 Sheet (514.2006.399.c): 18 1/2 x 12 7/16" (47 x 31.6 cm)
 Sheet (514.2006.399.d): 18 1/2 x 12 7/16" (47 x 31.6 cm)
 Sheet (514.2006.399.e): 18 1/2 x 12 7/16" (47 x 31.6 cm)
 Sheet (514.2006.399.f): 18 1/2 x 12 7/16" (47 x 31.6 cm)
 Sheet (514.2006.399.g): 18 1/2 x 12 7/16" (47 x 31.6 cm)
 The Museum of Modern Art, New York. Linda Barth Goldstein Fund



LIAM GILLICK (British, born 1964)
Dienstag (Tuesday) from Guide
 2004
 One from a portfolio of five screenprints
 composition and sheet: 46 3/4 x 33 1/16" (118.7 x 84 cm)
 The Museum of Modern Art, New York. Donald B. Marron Fund



LIAM GILLICK (British, born 1964)
Donnerstag (Thursday) from Guide
 2004
 One from a portfolio of five screenprints
 composition and sheet: 46 3/4 x 33 1/16" (118.7 x 84 cm)
 The Museum of Modern Art, New York. Donald B. Marron Fund



LIAM GILLICK (British, born 1964)
Freitag (Friday) from Guide
 2004
 One from a portfolio of five screenprints
 composition and sheet: 46 3/4 x 33 1/16" (118.7 x 84 cm)
 The Museum of Modern Art, New York. Donald B. Marron Fund



LIAM GILLICK (British, born 1964)
Mittwoch (Wednesday) from Guide
 2004
 One from a portfolio of five screenprints
 composition and sheet: 46 3/4 x 33 1/16" (118.7 x 84 cm)
 The Museum of Modern Art, New York. Donald B. Marron Fund



LIAM GILLICK (British, born 1964)
Montag (Monday) from Guide
 2004
 One from a portfolio of five screenprints
 composition and sheet: 46 3/4 x 33 1/16" (118.7 x 84 cm)
 The Museum of Modern Art, New York. Donald B. Marron Fund



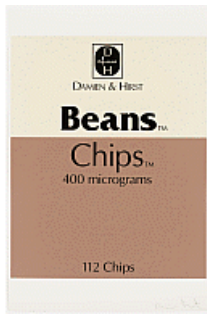
NAN GOLDIN (American, born 1953)
Untitled from the Museum in Progress project Travelling Eye
 (magazine published: April 29, 1996)
 Page: 11 x 8 1/4" (27.9 x 21 cm)
 The Museum of Modern Art, New York. Linda Barth Goldstein Fund



FELIX GONZALEZ-TORRES (American, born Cuba. 1957-1996)
"Untitled"
 1991
 Billboard
 Dimensions vary with installation
 The Museum of Modern Art, New York. Gift of Werner and Elaine Dannheisser



FELIX GONZALEZ-TORRES (American, born Cuba. 1957-1996)
Untitled from the Museum in Progress project Travelling Eye
 (magazine published: February 12, 1996)
 page: 11 x 8 1/4" (28 x 21 cm)
 The Museum of Modern Art, New York. Linda Barth Goldstein Fund



DAMIEN HIRST (British, born 1965)
Beans & Chips from The Last Supper
 1999

One from a portfolio of 13 screenprints
 sheet: 60 x 40" (152.4 x 101.6 cm)

The Museum of Modern Art, New York. Monroe Wheeler Memorial Fund,
 Roxanne H. Frank Fund and partial gift of Charles Booth-Clibborn



DAMIEN HIRST (British, born 1965)
Cornish Pasty from The Last Supper
 1999

One from a portfolio of 13 screenprints
 sheet: 60 x 40" (152.4 x 101.6 cm)

The Museum of Modern Art, New York. Monroe Wheeler Memorial Fund,
 Roxanne H. Frank Fund and partial gift of Charles Booth-Clibborn



DAMIEN HIRST (British, born 1965)
Dumpling from The Last Supper
 1999

One from a portfolio of 13 screenprints
 sheet: 40 x 60" (101.6 x 152.4 cm)

The Museum of Modern Art, New York. Monroe Wheeler Memorial Fund,
 Roxanne H. Frank Fund and partial gift of Charles Booth-Clibborn



DAMIEN HIRST (British, born 1965)
Meatballs from The Last Supper
 1999

One from a portfolio of 13 screenprints
 sheet: 60 x 40" (152.4 x 101.6 cm)

The Museum of Modern Art, New York. Monroe Wheeler Memorial Fund,
 Roxanne H. Frank Fund and partial gift of Charles Booth-Clibborn



DAMIEN HIRST (British, born 1965)
Salad from The Last Supper
 1999

One from a portfolio of 13 screenprints
 sheet: 60 x 40" (152.4 x 101.6 cm)

The Museum of Modern Art, New York. Monroe Wheeler Memorial Fund,
 Roxanne H. Frank Fund and partial gift of Charles Booth-Clibborn



DAMIEN HIRST (British, born 1965)

Sausages from The Last Supper

1999

One from a portfolio of 13 screenprints

sheet: 60 x 40" (152.4 x 101.6 cm)

The Museum of Modern Art, New York. Monroe Wheeler Memorial Fund, Roxanne H. Frank Fund and partial gift of Charles Booth-Clibborn



DAMIEN HIRST (British, born 1965)

Steak and Kidney from The Last Supper

1999

One from a portfolio of 13 screenprints

sheet: 60 x 40" (152.4 x 101.6 cm)

The Museum of Modern Art, New York. Monroe Wheeler Memorial Fund, Roxanne H. Frank Fund and partial gift of Charles Booth-Clibborn



RONI HORN (American, born 1955)

Untitled from the Museum in Progress project Travelling Eye

(magazine published: July 22, 1996)

Page: 11 x 8 1/4" (27.9 x 21 cm)

The Museum of Modern Art, New York. Linda Barth Goldstein Fund



ALEKSANDAR BATTISTA ILIC (Croatian, born 1965)

IVANA KESER (Croatian, born 1967)

TOMISLAV GOTOVAC

Weekend Art from the Museum in Progress project Interventions in progress

(newspaper published August 17, 1999 through September 11, 1999)

Six lithographs, offset printed

sheet (each): 18 1/2 x 12 3/8" (47 x 31.5 cm)

The Museum of Modern Art, New York. Linda Barth Goldstein Fund



IRWIN (Slovenian, active 1983-present)

NSK Guard Tirana, NSK Guard Prague, NSK Guard Rome, and NSK Guard Graz from the Museum in Progress project Global Positions

(newspapers published Nov 12, 2001 through Dec 10, 2001)

Lithographs, offset printed

sheet (each): 18 1/2 x 12 3/8" (47 x 31.5 cm)

The Museum of Modern Art, New York. Linda Barth Goldstein Fund



MARTIN KIPPENBERGER (German, 1953-1997)

Inhalt auf Reisen

1992

4 screenprints

Various sizes, one each at: 71 x 60" (180.3 x 152.4 cm), 47 x 39" (119.4 x 99.1 cm), 35 x 28" (88.9 x 71.1 cm), and 34 x 20" (86.4 x 50.8 cm)

Estate Martin Kippenberger, courtesy Galerie Gisela Capitain, Cologne



GUILLERMO KUITCA (Argentine, born 1961)

Double Theater (Doble Teatro)

1997

Lithograph and etching

plate: 14 7/8 x 21 9/16" (37.8 x 54.8 cm); sheet: 22 5/16 x 30 5/16" (56.8 x 77 cm)

The Museum of Modern Art, New York. Committee on Prints and Illustrated Books Fund



GUILLERMO KUITCA (Argentine, born 1961)

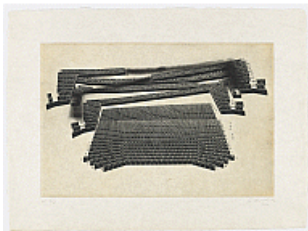
Fourth Wall (Cuarta Pared)

1997

Lithograph and etching

plate: 14 x 20 1/4" (35.5 x 51.5 cm); sheet: 22 1/4 x 30 1/8" (56.5 x 76.5 cm)

The Museum of Modern Art, New York. Committee on Prints and Illustrated Books Fund



GUILLERMO KUITCA (Argentine, born 1961)

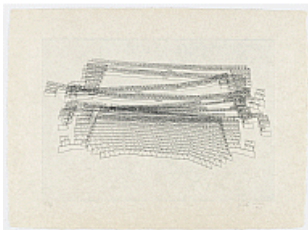
Untitled 1 (Sin título- 1)

1997

Lithograph and etching

plate: 15 9/16 x 23 1/2" (39.5 x 59.8 cm); sheet: 22 5/16 x 30 5/16" (56.8 x 77 cm)

The Museum of Modern Art, New York. Committee on Prints and Illustrated Books Fund



GUILLERMO KUITCA (Argentine, born 1961)

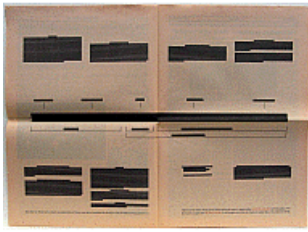
Untitled 2 (Sin título- 2)

1997

Lithograph and etching

plate: 16 7/16 x 23 1/2" (41.8 x 59.8 cm); sheet: 22 7/16 x 30 1/4" (57 x 76.8 cm)

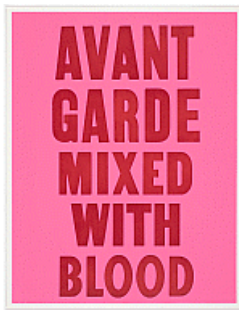
The Museum of Modern Art, New York. Committee on Prints and Illustrated Books Fund



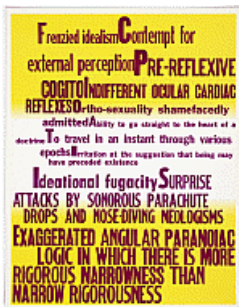
THOMAS LOCHER (German, born 1956)
Untitled from the Museum in Progress project The Message as Medium
 (newspaper published March 29, 1991)
 Lithograph, offset printed
 sheet (two-page spread): 18 1/2 x 24 13/16" (47 x 63 cm); composition: 14 3/8 x 22 3/16" (36.5 x 56.4 cm)
 The Museum of Modern Art, New York. Linda Barth Goldstein Fund



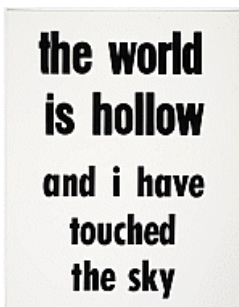
CHRISTIAN MARCLAY (American, born 1955)
Graffiti Composition
 2002
 Portfolio of 150 digital prints
 sheet (each): 13 x 8 7/16" (33 x 21.5 cm)
 The Museum of Modern Art, New York. Donald B. Marron Fund



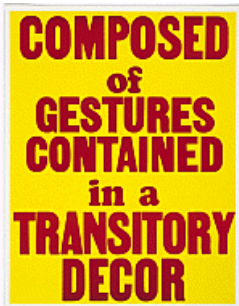
DANIEL JOSEPH MARTINEZ (American, born 1957)
Untitled from If Only God Had Invented Coca Cola, Sooner! Or, The Death of My Pet Monkey
 2004
 One from a portfolio of 23 screenprints with letterpress
 composition: 26 15/16 x 20 15/16" (68.5 x 53.2 cm); sheet: 27 15/16 x 21 15/16" (71 x 55.8 cm)
 The Museum of Modern Art, New York. Committee on Prints and Illustrated Books Fund



DANIEL JOSEPH MARTINEZ (American, born 1957)
Untitled from If Only God Had Invented Coca Cola, Sooner! Or, The Death of My Pet Monkey
 2004
 One from a portfolio of 23 screenprints with letterpress
 composition: 26 15/16 x 20 15/16" (68.5 x 53.2 cm); sheet: 27 15/16 x 21 15/16" (71 x 55.8 cm)
 The Museum of Modern Art, New York. Committee on Prints and Illustrated Books Fund



DANIEL JOSEPH MARTINEZ (American, born 1957)
Untitled from If Only God Had Invented Coca Cola, Sooner! Or, The Death of My Pet Monkey
 2004
 One from a portfolio of 23 screenprints with letterpress
 composition (irreg.): 24 13/16 x 15 9/16" (63 x 39.5 cm); sheet: 27 15/16 x 21 15/16" (71 x 55.8 cm)
 The Museum of Modern Art, New York. Committee on Prints and Illustrated Books Fund



DANIEL JOSEPH MARTINEZ (American, born 1957)

Untitled from If Only God Had Invented Coca Cola, Sooner! Or, The Death of My Pet Monkey

2004

One from a portfolio of 23 screenprints with letterpress

composition: 26 15/16 x 20 15/16" (68.5 x 53.2 cm); sheet: 27 15/16 x 21 15/16" (71 x 55.8 cm)

The Museum of Modern Art, New York. Committee on Prints and Illustrated Books Fund



DANIEL JOSEPH MARTINEZ (American, born 1957)

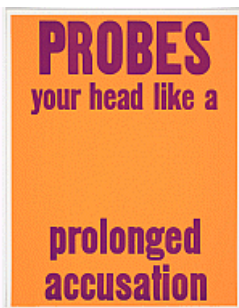
Untitled from If Only God Had Invented Coca Cola, Sooner! Or, The Death of My Pet Monkey

2004

One from a portfolio of 23 screenprints with letterpress

composition: 26 15/16 x 20 15/16" (68.5 x 53.2 cm); sheet: 27 15/16 x 21 15/16" (71 x 55.8 cm)

The Museum of Modern Art, New York. Committee on Prints and Illustrated Books Fund



DANIEL JOSEPH MARTINEZ (American, born 1957)

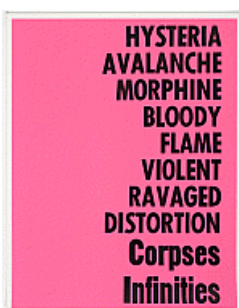
Untitled from If Only God Had Invented Coca Cola, Sooner! Or, The Death of My Pet Monkey

2004

One from a portfolio of 23 screenprints with letterpress

composition: 26 15/16 x 20 15/16" (68.5 x 53.2 cm); sheet: 27 15/16 x 21 15/16" (71 x 55.8 cm)

The Museum of Modern Art, New York. Committee on Prints and Illustrated Books Fund



DANIEL JOSEPH MARTINEZ (American, born 1957)

Untitled from If Only God Had Invented Coca Cola, Sooner! Or, The Death of My Pet Monkey

2004

One from a portfolio of 23 screenprints with letterpress

composition: 26 15/16 x 20 15/16" (68.5 x 53.2 cm); sheet: 27 15/16 x 21 15/16" (71 x 55.8 cm)

The Museum of Modern Art, New York. Committee on Prints and Illustrated Books Fund



DANIEL JOSEPH MARTINEZ (American, born 1957)

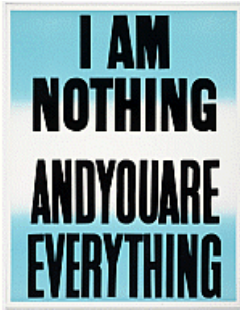
Untitled from If Only God Had Invented Coca Cola, Sooner! Or, The Death of My Pet Monkey

2004

One from a portfolio of 23 screenprints with letterpress

composition: 26 15/16 x 20 15/16" (68.5 x 53.2 cm); sheet: 27 15/16 x 21 15/16" (71 x 55.8 cm)

The Museum of Modern Art, New York. Committee on Prints and Illustrated Books Fund



DANIEL JOSEPH MARTINEZ (American, born 1957)

Untitled from If Only God Had Invented Coca Cola, Sooner! Or, The Death of My Pet Monkey

2004

One from a portfolio of 23 screenprints with letterpress

composition: 26 15/16 x 20 15/16" (68.5 x 53.2 cm); sheet: 27 15/16 x 21 15/16" (71 x 55.8 cm)

The Museum of Modern Art, New York. Committee on Prints and Illustrated Books Fund



DANIEL JOSEPH MARTINEZ (American, born 1957)

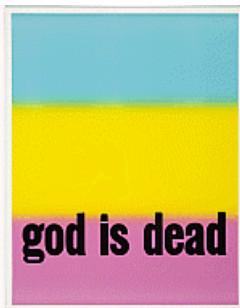
Untitled from If Only God Had Invented Coca Cola, Sooner! Or, The Death of My Pet Monkey

2004

One from a portfolio of 23 screenprints with letterpress

composition: 25 9/16 x 13" (65 x 33 cm); sheet: 27 15/16 x 21 15/16" (71 x 55.8 cm)

The Museum of Modern Art, New York. Committee on Prints and Illustrated Books Fund



DANIEL JOSEPH MARTINEZ (American, born 1957)

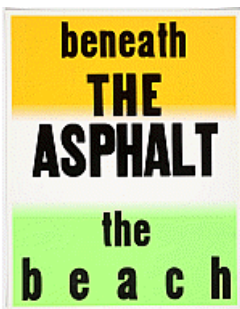
Untitled from If Only God Had Invented Coca Cola, Sooner! Or, The Death of My Pet Monkey

2004

One from a portfolio of 23 screenprints with letterpress

composition: 26 15/16 x 20 15/16" (68.5 x 53.2 cm); sheet: 27 15/16 x 21 15/16" (71 x 55.8 cm)

The Museum of Modern Art, New York. Committee on Prints and Illustrated Books Fund



DANIEL JOSEPH MARTINEZ (American, born 1957)

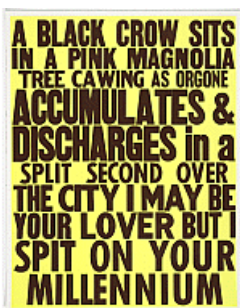
Untitled from If Only God Had Invented Coca Cola, Sooner! Or, The Death of My Pet Monkey

2004

One from a portfolio of 23 screenprints with letterpress

composition: 26 15/16 x 20 15/16" (68.5 x 53.2 cm); sheet (each): 27 15/16 x 21 15/16" (71 x 55.8 cm)

The Museum of Modern Art, New York. Committee on Prints and Illustrated Books Fund



DANIEL JOSEPH MARTINEZ (American, born 1957)

Untitled from If Only God Had Invented Coca Cola, Sooner! Or, The Death of My Pet Monkey

2004

One from a portfolio of 23 screenprints with letterpress

composition: 26 15/16 x 20 15/16" (68.5 x 53.2 cm); sheet: 27 15/16 x 21 15/16" (71 x 55.8 cm)

The Museum of Modern Art, New York. Committee on Prints and Illustrated Books Fund



DANIEL JOSEPH MARTINEZ (American, born 1957)

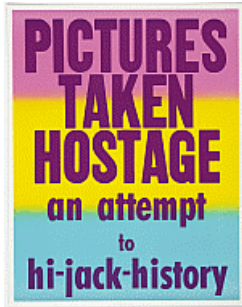
Untitled from If Only God Had Invented Coca Cola, Sooner! Or, The Death of My Pet Monkey

2004

One from a portfolio of 23 screenprints with letterpress

composition: 26 15/16 x 20 15/16" (68.5 x 53.2 cm); sheet: 27 15/16 x 21 15/16" (71 x 55.8 cm)

The Museum of Modern Art, New York. Committee on Prints and Illustrated Books Fund



DANIEL JOSEPH MARTINEZ (American, born 1957)

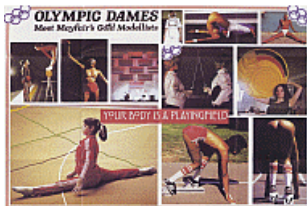
Untitled from If Only God Had Invented Coca Cola, Sooner! Or, The Death of My Pet Monkey

2004

One from a portfolio of 23 screenprints with letterpress

composition: 26 15/16 x 20 15/16" (68.5 x 53.2 cm); sheet: 27 15/16 x 21 15/16" (71 x 55.8 cm)

The Museum of Modern Art, New York. Committee on Prints and Illustrated Books Fund



LUCY MCKENZIE (British, born 1977)

Olympic Dames

2002

Lithograph, offset printed

composition and sheet: 31 7/16 x 46 13/16" (79.8 x 118.9 cm)

The Museum of Modern Art, New York. Fund for the Twenty-First Century



LUCY MCKENZIE (British, born 1977)

Untitled from Flourish Night Posters

2002-03

Screenprint from a series of seven screenprints and one with stamp and conté crayon

composition (irreg.): 21 1/8 x 11 11/16" (53.7 x 29.7 cm); sheet: 23 1/4 x 16 9/16" (59 x 42 cm)

The Museum of Modern Art, New York. Fund for the Twenty-First Century



LUCY MCKENZIE (British, born 1977)

Untitled from Flourish Night Posters

2002-03

Screenprint from a series of seven screenprints and one with stamp and conté crayon

composition (irreg.): 22 1/16 x 15 15/16" (56 x 40.5 cm); sheet: 23 1/4 x 16 9/16" (59 x 42 cm)

The Museum of Modern Art, New York. Fund for the Twenty-First Century



LUCY MCKENZIE (British, born 1977)
 PAULINA OLOWSKA (Polish, born 1976)
Untitled from Nova Populama

2003

One from a series of six screenprints
 composition (irreg.): 19 7/8 x 13 3/8" (50.5 x 34 cm); sheet: 23 1/8 x 16 7/16"
 (58.8 x 41.8 cm)

The Museum of Modern Art, New York. Fund for the Twenty-First Century



LUCY MCKENZIE (British, born 1977)
 PAULINA OLOWSKA (Polish, born 1976)
Untitled from Nova Populama

2003

One from a series of six screenprints
 composition (irreg.): 18 11/16 x 14 5/16" (47.4 x 36.4 cm); sheet: 22 x 16 7/16"
 (55.9 x 41.8 cm)

The Museum of Modern Art, New York. Fund for the Twenty-First Century



LUCY MCKENZIE (British, born 1977)
 PAULINA OLOWSKA (Polish, born 1976)
Untitled from Nova Populama

2003

One from a series of six screenprints
 composition (irreg.): 18 5/16 x 15 1/8" (46.5 x 38.4 cm); sheet: 23 5/16 x 16
 7/16" (59.2 x 41.8 cm)

The Museum of Modern Art, New York. Fund for the Twenty-First Century



LUCY MCKENZIE (British, born 1977)
 PAULINA OLOWSKA (Polish, born 1976)
Untitled from Nova Populama

2003

One from a series of six screenprints
 composition (irreg.): 17 15/16 x 13 3/16" (45.5 x 33.5 cm); sheet: 23 5/16 x 16
 7/16" (59.2 x 41.8 cm)

The Museum of Modern Art, New York. Fund for the Twenty-First Century



JULIE MEHRETU (American, born Ethiopia 1970)
Untitled from Landscape Allegories

2004

One from a series of seven etching, engraving, drypoint, and aquatints
 plate: 11 13/16 x 15 7/8" (30 x 40.3 cm); sheet: 19 x 21 3/4" (48.3 x 55.2 cm)
 The Museum of Modern Art, New York. Anna Marie and Robert F. Shapiro Fund,
 Miranda Kaiser Fund, Marnie Pillsbury Fund, and Patricia P. Irgens Larsen
 Foundation Fund



JULIE MEHRETU (American, born Ethiopia 1970)

Untitled from Landscape Allegories

2004

One from a series of seven etching, engraving, drypoint, and aquatints
plate: 11 13/16 x 15 7/8" (30 x 40.3 cm); sheet: 19 x 21 3/4" (48.3 x 55.2 cm)

The Museum of Modern Art, New York. Anna Marie and Robert F. Shapiro Fund, Miranda Duncan Fund, Marnie Pillsbury Fund, and Patricia P. Irgens Larsen Foundation Fund



JULIE MEHRETU (American, born Ethiopia 1970)

Untitled from Landscape Allegories

2004

One from a series of seven etching, engraving, drypoint, and aquatints
plate: 11 13/16 x 15 7/8" (30 x 40.3 cm); sheet: 19 x 21 3/4" (48.3 x 55.2 cm)

The Museum of Modern Art, New York. Anna Marie and Robert F. Shapiro Fund, Miranda Duncan Fund, Marnie Pillsbury Fund, and Patricia P. Irgens Larsen Foundation Fund



JULIE MEHRETU (American, born Ethiopia 1970)

Untitled from Landscape Allegories

2004

One from a series of seven etching, engraving, drypoint, and aquatints
plate: 11 13/16 x 15 7/8" (30 x 40.3 cm); sheet: 19 x 21 3/4" (48.3 x 55.2 cm)

The Museum of Modern Art, New York. Anna Marie and Robert F. Shapiro Fund, Miranda Duncan Fund, Marnie Pillsbury Fund, and Patricia P. Irgens Larsen Foundation Fund



JULIE MEHRETU (American, born Ethiopia 1970)

Untitled from Landscape Allegories

2004

One from a series of seven etching, engraving, drypoint, and aquatints
plate: 11 13/16 x 15 7/8" (30 x 40.3 cm); sheet: 19 x 21 3/4" (48.3 x 55.2 cm)

The Museum of Modern Art, New York. Anna Marie and Robert F. Shapiro Fund, Miranda Duncan Fund, Marnie Pillsbury Fund, and Patricia P. Irgens Larsen Foundation Fund



JULIE MEHRETU (American, born Ethiopia 1970)

Untitled from Landscape Allegories

2004

One from a series of seven etching, engraving, drypoint, and aquatints
plate: 11 13/16 x 15 7/8" (30 x 40.3 cm); sheet: 19 x 21 3/4" (48.3 x 55.2 cm)

The Museum of Modern Art, New York. Anna Marie and Robert F. Shapiro Fund, Miranda Kaiser Fund, Marnie Pillsbury Fund, and Patricia P. Irgens Larsen Foundation Fund



JULIE MEHRETU (American, born Ethiopia 1970)

Untitled from Landscape Allegories

2004

One from a series of seven etching, engraving, drypoint, and aquatints
plate: 11 13/16 x 15 7/8" (30 x 40.3 cm); sheet: 19 x 21 3/4" (48.3 x 55.2 cm)

The Museum of Modern Art, New York. Anna Marie and Robert F. Shapiro Fund, Miranda Kaiser Fund, Marnie Pillsbury Fund, and Patricia P. Irgens Larsen Foundation Fund



ALEKSANDRA MIR (American and Swedish, born Poland 1967)

Naming Tokyo (part I) and Naming Tokyo (part II)

2003

Two double-sided lithographs, offset printed
sheet (each): 27 9/16 x 39 3/8" (70 x 100 cm)

The Museum of Modern Art, New York. General Print Fund



ALEKSANDRA MIR (American and Swedish, born Poland 1967)

Venezia (all places contain all others)

2009

72 from a series of 100 postcards

composition and sheet: 4 1/4 x 6" (10.8 x 15.2 cm)

Given anonymously



MATT MULLICAN (American, born 1951)

88 Maps

2010

Illustrated book with twenty-eight graphite rubbings, fourteen with screenprint additions

page: see child records; overall (closed): 24 7/8 x 12 3/4 x 1 5/16" (63.2 x 32.4 x 3.3 cm)

The Museum of Modern Art, New York. Monroe Wheeler Fund



YOSHITOMO NARA (Japanese, born 1959)

Haze Day

2002

Etching, aquatint, and drypoint

Sheet: 19 1/4 x 14 15/16" (48.9 x 37.9 cm)

Collection John Silberman and Eliot Carlen, New York



YOSHITOMO NARA (Japanese, born 1959)

Night Walker

2002

Etching, aquatint, and drypoint

Sheet: 19 1/4 x 14 15/16" (48.9 x 37.9 cm); Plate: 11 7/8 x 8 7/8" (30.2 x 22.5 cm)

Courtesy Marianne Boesky Gallery, New York



YOSHITOMO NARA (Japanese, born 1959)

Spockie

2002

Etching and aquatint

plate: 11 11/16 x 9 3/4" (29.7 x 24.7 cm); sheet: 19 5/16 x 14 15/16" (49 x 38 cm)

The Museum of Modern Art, New York. Katsko Suzuki Memorial Fund



YOSHITOMO NARA (Japanese, born 1959)

Stay Good

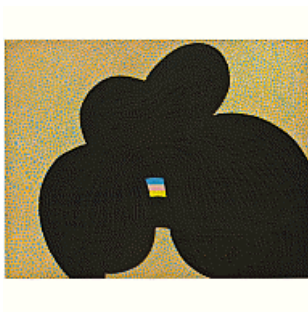
2002

Etching, aquatint, and drypoint

Sheet: 19 1/4 x 14 15/16" (48.9 x 37.9 cm)

Plate: 11 5/8 x 8 7/8" (29.5 x 22.5 cm)

Collection Michelle Levy, Brooklyn



THOMAS NOZKOWSKI (American, born 1944)

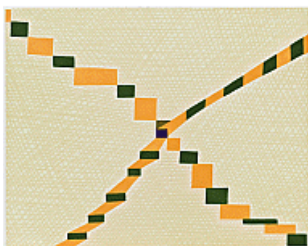
Untitled

2006

One from a series of five etching, aquatint, and drypoints

composition and sheet: 10 13/16 x 13 11/16" (27.4 x 34.7 cm)

The Museum of Modern Art, New York. Gift of the Associates of the Department of Prints and Illustrated Books, in honor of Wendy Weitman



THOMAS NOZKOWSKI (American, born 1944)

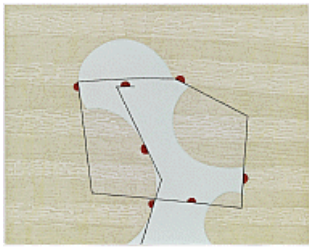
Untitled

2006

One from a series of five etching, aquatint, and drypoints

composition and sheet: 10 13/16 x 13 11/16" (27.4 x 34.7 cm)

The Museum of Modern Art, New York. Gift of the Associates of the Department of Prints and Illustrated Books, in honor of Wendy Weitman



THOMAS NOZKOWSKI (American, born 1944)

Untitled

2006

One from a series of five etching, aquatint, and drypoints
composition and sheet: 10 13/16 x 13 11/16" (27.4 x 34.7 cm)

The Museum of Modern Art, New York. Gift of the Associates of the Department of Prints and Illustrated Books, in honor of Wendy Weitman



THOMAS NOZKOWSKI (American, born 1944)

Untitled

2006

One from a series of five etching, aquatint, and drypoints
composition and sheet: 10 13/16 x 13 11/16" (27.4 x 34.7 cm)

The Museum of Modern Art, New York. Gift of the Associates of the Department of Prints and Illustrated Books, in honor of Wendy Weitman



THOMAS NOZKOWSKI (American, born 1944)

Untitled

2006

One from a series of five etching, aquatint, and drypoints
composition and sheet: 10 13/16 x 13 11/16" (27.4 x 34.7 cm)

The Museum of Modern Art, New York. Gift of the Associates of the Department of Prints and Illustrated Books, in honor of Wendy Weitman



GABRIEL OROZCO (Mexican, born 1962)

Untitled from the Museum in Progress project Travelling Eye

(magazine published: June 24, 1996)

Page: 11 x 8 1/4" (27.9 x 21 cm)

The Museum of Modern Art, New York. Linda Barth Goldstein Fund



JORGE PARDO (American, born 1963)

Untitled from Eucalyptus (Eukalyptus)

1997

One from a portfolio of nine unique screenprints

composition (irreg.): 11 3/8 x 7 13/16" (28.9 x 19.8cm); sheet: 13 3/8 x 8 15/16" (34 x 22.7cm)

The Museum of Modern Art, New York. Gift of Marc A. Schwartz and Sarah C. Epstein Fund



JORGE PARDO (American, born 1963)

Untitled from Eucalyptus (Eukalyptus)

1997

One from a portfolio of nine unique screenprints

composition (irreg.): 11 1/4 x 7 7/8" (28.5 x 20cm); sheet: 13 3/8 x 8 15/16" (34 x 22.7 cm)

The Museum of Modern Art, New York. Gift of Marc A. Schwartz and Sarah C. Epstein Fund



JORGE PARDO (American, born 1963)

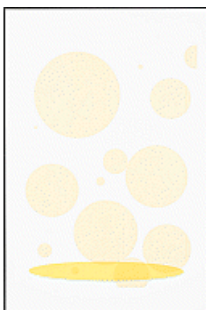
Untitled from Eucalyptus (Eukalyptus)

1997

One from a portfolio of nine unique screenprints

composition (irreg.): 11 1/4 x 7 11/16" (28.5 x 19.5cm); sheet: 13 3/8 x 8 15/16" (34 x 22.7cm)

The Museum of Modern Art, New York. Gift of Marc A. Schwartz and Sarah C. Epstein Fund



JORGE PARDO (American, born 1963)

Untitled from Eucalyptus (Eukalyptus)

1997

One from a portfolio of nine unique screenprints

composition (irreg.): 11 x 7 1/2" (28 x 19 cm); sheet: 13 3/8 x 8 15/16" (34 x 22.7 cm)

The Museum of Modern Art, New York. Gift of Marc A. Schwartz and Sarah C. Epstein Fund



JORGE PARDO (American, born 1963)

Untitled from Eucalyptus (Eukalyptus)

1997

One from a portfolio of nine unique screenprints

composition (irreg.): 11 3/16 x 7 13/16" (28.4 x 19.8cm); sheet: 13 3/8 x 8 15/16" (34 x 22.7 cm)

The Museum of Modern Art, New York. Gift of Marc A. Schwartz and Sarah C. Epstein Fund



JORGE PARDO (American, born 1963)

Untitled from Eucalyptus (Eukalyptus)

1997

One from a portfolio of nine unique screenprints

composition (irreg.): 10 15/16 x 7 1/2" (27.8 x 19.1 cm); sheet: 13 3/8 x 8 15/16" (34 x 22.7 cm)

The Museum of Modern Art, New York. Gift of Marc A. Schwartz and Sarah C. Epstein Fund



JORGE PARDO (American, born 1963)

Untitled from Eucalyptus (Eukalyptus)

1997

One from a portfolio of nine unique screenprints

composition (irreg.): 11 5/16 x 7 13/16" (28.8 x 19.9cm); sheet: 13 3/8 x 8 15/16" (34 x 22.7 cm)

The Museum of Modern Art, New York. Gift of Marc A. Schwartz and Sarah C. Epstein Fund



JORGE PARDO (American, born 1963)

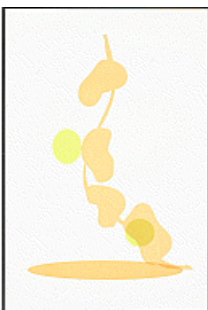
Untitled from Eucalyptus (Eukalyptus)

1997

One from a portfolio of nine unique screenprints

composition (irreg.): 10 13/16 x 7 1/2" (27.4 x 19cm); sheet: 13 3/8 x 8 15/16" (34 x 22.7 cm)

The Museum of Modern Art, New York. Gift of Marc A. Schwartz and Sarah C. Epstein Fund



JORGE PARDO (American, born 1963)

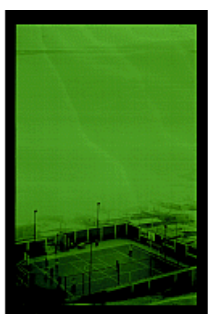
Untitled from Eucalyptus (Eukalyptus)

1997

One from a portfolio of nine unique screenprints

composition (irreg.): 10 7/8 x 7 5/16" (27.6 x 18.5cm); sheet: 13 3/8 x 8 15/16" (34 x 22.7 cm)

The Museum of Modern Art, New York. Gift of Marc A. Schwartz and Sarah C. Epstein Fund



PHILIPPE PARRENO (French, born 1964)

Argentina vs. Netherlands 1978, Medina 2003 from Fade to Black

2003

Screenprint, printed in phosphorescent ink

composition (irreg.): 68 1/2 x 44 1/8" (174 x 112 cm); sheet: 72 13/16 x 47 1/4" (185 x 120 cm)

The Museum of Modern Art, New York. Riva Castleman Endowment Fund



PHILIPPE PARRENO (French, born 1964)

In 1993 Rirkrit Tiravanija made a SCI-FI artwork for me from Fade to Black

2003

Screenprint, printed in phosphorescent ink

composition (irreg.): 26 15/16 x 46 1/16" (68.5 x 117 cm); sheet: 72 13/16 x 47 1/4" (185 x 120 cm)

The Museum of Modern Art, New York. Riva Castleman Endowment Fund



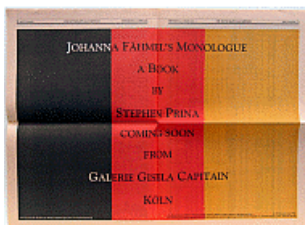
PHILIPPE PARRENO (French, born 1964)
Space World, Kitakyushu 2003 from Fade to Black
 2003
 Screenprint, printed in phosphorescent ink
 composition (irreg.): 70 9/16 x 47 1/4" (179.2 x 120 cm); sheet: 72 13/16 x 47 1/4" (185 x 120 cm)
 The Museum of Modern Art, New York. Riva Castleman Endowment Fund



PHILIPPE PARRENO (French, born 1964)
The Day After, Kitakyushu 2003 from Fade to Black
 2003
 Screenprint, printed in phosphorescent ink
 composition (irreg.): 50 13/16 x 45 1/4" (129 x 115 cm); sheet: 72 13/16 x 47 1/4" (185 x 120 cm)
 The Museum of Modern Art, New York. Riva Castleman Endowment Fund



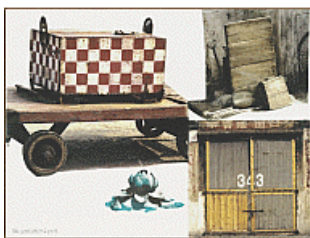
PHILIPPE PARRENO (French, born 1964)
The winter of 1996 as it has been reported by Pierre Huyghe from Fade to Black
 2003
 Screenprint, printed in phosphorescent ink
 composition (irreg.): 48 1/16 x 42 15/16" (122 x 109 cm); sheet: 72 13/16 x 47 1/4" (185 x 120 cm)
 The Museum of Modern Art, New York. Riva Castleman Endowment Fund



STEPHEN PRINA (American, born 1954)
Untitled from the Museum in Progress project The Message as Medium
 (newspaper published April 25, 1991)
 Lithograph, offset printed
 sheet (two-page spread): 18 1/2 x 24 13/16" (47 x 63 cm); composition: 16 x 23 1/8" (40.7 x 58.8 cm)
 The Museum of Modern Art, New York. Linda Barth Goldstein Fund



ROBERT RAUSCHENBERG (American, 1925-2008)
Lotus Bed I from The Lotus Series
 2008
 Digital print from a series of twelve digital prints, ten with photogravure
 sheet: 60 3/4 x 45 3/4" (154.3 x 116.2 cm)
 The Museum of Modern Art, New York. Gift of Emily Fisher Landau



ROBERT RAUSCHENBERG (American, 1925-2008)

Lotus I from The Lotus Series

2008

Digital print with photogravure from a series of twelve digital prints, ten with photogravure

sheet: 45 3/4 x 60 3/4" (116.2 x 154.3 cm)

The Museum of Modern Art, New York. Gift of Emily Fisher Landau



ROBERT RAUSCHENBERG (American, 1925-2008)

Lotus II from The Lotus Series

2008

Digital print with photogravure from a series of twelve digital prints, ten with photogravure

sheet: 45 3/4 x 60 3/4" (116.2 x 154.3 cm)

The Museum of Modern Art, New York. Gift of Emily Fisher Landau



ROBERT RAUSCHENBERG (American, 1925-2008)

Lotus VII from The Lotus Series

2008

Digital print with photogravure from a series of twelve digital prints, ten with photogravure

sheet: 45 3/4 x 60 3/4" (116.2 x 154.3 cm)

The Museum of Modern Art, New York. Gift of Emily Fisher Landau



GERHARD RICHTER (German, born 1932)

Untitled from the Museum in Progress project Travelling Eye

(magazine published: June 10, 1996)

Magazine insert

Page: 11 x 8 1/4" (28 x 21 cm); page (spread): 11 x 16 9/16" (28 x 42 cm)

The Museum of Modern Art, New York. Linda Barth Goldstein Fund



JACOB SAMUEL

Portable aquatint box

Portable aquatint box

Approx. 48 x 30 x 30" (121.9 x 76.2 x 76.2 cm)

Courtesy Edition Jacob Samuel, Santa Monica



THOMAS SCHÜTTE (German, born 1954)

Low Tide Wandering (Wattwanderung)

2001

Portfolio of 139 etchings

plate: see child records; sheet (each approx.); orientation varies: 12 11/16 x 17 5/8" (32.2 x 44.7 cm)

The Museum of Modern Art, New York. Sue and Edgar Wachenheim III Fund and Gift of the Contemporary Arts Council of the Museum of Modern Art



JAMES SIENA (American, born 1957)

Upside Down Devil Variation

2004

Engraving

plate: 19 x 14 15/16" (48.2 x 37.9 cm); sheet: 26 5/8 x 22 1/4" (67.6 x 56.5 cm)

The Museum of Modern Art, New York. Gift of the Young Print Collectors of The Museum of Modern Art



SLAVS AND TATARS (founded 2005)

Romantics love violence, too.

2007

Screenprint

composition (irreg.): 32 3/16 x 26 7/8" (81.7 x 68.3 cm); sheet: 48 13/16 x 34 5/8" (124 x 88 cm)

The Museum of Modern Art, New York. General Print Fund



SLAVS AND TATARS (founded 2005)

Sad Sciences, Happy Maths

2007

Screenprint

composition (irreg.): 31 7/8 x 25 9/16" (81 x 65 cm); sheet: 48 13/16 x 34 5/8" (124 x 88 cm)

The Museum of Modern Art, New York. General Print Fund



SLAVS AND TATARS (founded 2005)

Untitled from Nations

2007

One from a series of five screenprints

composition (irreg.): 34 5/8 x 26 15/16" (88 x 68.5 cm); sheet: 48 13/16 x 34 5/8" (124 x 88 cm)

The Museum of Modern Art, New York. General Print Fund



SLAVS AND TATARS (founded 2005)

Untitled from Nations

2007

One from a series of five screenprints

composition (irreg.): 32 5/16 x 26 15/16" (82 x 68.4 cm); sheet: 48 13/16 x 34 5/8" (124 x 88 cm)

The Museum of Modern Art, New York. General Print Fund



SLAVS AND TATARS (founded 2005)

Untitled from Nations

2007

One from a series of five screenprints

composition (irreg.): 32 5/8 x 26 3/4" (82.8 x 68 cm); sheet: 48 13/16 x 34 5/8" (124 x 88 cm)

The Museum of Modern Art, New York. General Print Fund



SLAVS AND TATARS (founded 2005)

Untitled from Nations

2007

One from a series of five screenprints

composition (irreg.): 32 3/16 x 19 1/2" (81.7 x 49.5 cm); sheet: 48 13/16 x 34 5/8" (124 x 88 cm)

The Museum of Modern Art, New York. General Print Fund



ANDREAS SLOMINSKI (German, born 1959)

Flying Carpets No. 1-6 from Museum in Progress

1994

Six Sky Lines magazines

page: 10 3/4 x 8 1/4" (27.3 x 21 cm)

The Museum of Modern Art, New York. Linda Barth Goldstein Fund



JOSH SMITH (American, born 1976)

Untitled

2008

100 monotypes in wooden case

Each sheet (a-vvvv): 22 x 15" (55.9 x 38.1 cm)

Collection of Martin and Rebecca Eisenberg



SUPERFLEX (Danish)

Copy Light/Factory

2008

Manual, contract, and digital and printed images to create a lamp productions workshop, and thirteen fabricated lamps
variable

The Museum of Modern Art, New York. Fund for the Twenty-First Century



RIRKRIT TIRAVANIJA (Thai, born Argentina, 1961)

Untitled, 1992 (Red, Yellow, Green Curry)

1992

Three tins of curry paste

Each: 1 1/2 x 3 x 3" (3.8 x 7.6 x 7.6 cm)

Collection Walker Art Center, Minneapolis. T. B. Walker Acquisition Fund, 1996



RIRKRIT TIRAVANIJA (Thai, born Argentina, 1961)

Untitled (rucksack installation)

1993

Multiple of backpack, map, camping stove, dishes, can opener, and ingredients for a Thai rice meal

rucksack (approx.): 15 3/4 x 12 5/8 x 11 7/16" (40 x 32 x 29cm); sheet (map): 76 5/16 x 68 1/8" (193.9 x 173 cm)

The Museum of Modern Art, New York. Purchased with funds given by Linda Barth Goldstein



RIRKRIT TIRAVANIJA (Thai, born Argentina, 1961)

Untitled, 1999 (the power of cheese)

1999

Resin and enamel paint

13 x 17 3/4 x 17 3/4" (33 x 45.1 x 45.1 cm)

Collection Walker Art Center, Minneapolis. T. B. Walker Acquisition Fund, 2000



RIRKRIT TIRAVANIJA (Thai, born Argentina, 1961)

Demonstration 1, Demonstration 2 (freedom cannot be simulated), and Untitled (a moment of life concretely and deliberately constructed...) from the Museum in Progress project Speed & Slowness

(journals published October 2003 through June 2004)

Three lithographs, offset printed

Each sheet: 16 9/16 x 11 5/8" (42 x 29.5 cm)

The Museum of Modern Art, New York. Linda Barth Goldstein Fund



RIRKRIT TIRAVANIJA (Thai, born Argentina, 1961)

Untitled 2008-2011 (the map of the land of feeling) I

2008-11

Scroll with digital printing, lithography, chine collé and screenprint sheet (approx.): 14 3/16 x 131 11/16" (36 x 334.5 cm)

The Museum of Modern Art, New York. Acquired through the generosity of Marie-Josée and Henry R. Kravis in honor of Paul Emile Cherix



RIRKRIT TIRAVANIJA (Thai, born Argentina, 1961)

Untitled 2008-2011 (the map of the land of feeling) II

2008-11

Scroll with digital printing, lithography, chine collé and screenprint sheet (approx.): 14 3/16 x 131 11/16" (36 x 334.5 cm)

The Museum of Modern Art, New York. Acquired through the generosity of Marie-Josée and Henry R. Kravis in honor of Paul Emile Cherix



RIRKRIT TIRAVANIJA (Thai, born Argentina, 1961)

Untitled 2008-2011 (the map of the land of feeling) III

2008-11

Scroll with digital printing, lithography, chine collé and screenprint sheet (approx.): 14 3/16 x 131 11/16" (36 x 334.5 cm)

The Museum of Modern Art, New York. Acquired through the generosity of Marie-Josée and Henry R. Kravis in honor of Paul Emile Cherix



GERT TOBIAS (German, born Romania 1973)

UWE TOBIAS (German, born Romania 1973)

Untitled

2011

Aquatint with etching from a portfolio of eleven aquatints (seven with etching) and one etching

Sheet (each): 16 x 14" (40.6 x 35.6 cm)

The Museum of Modern Art, New York. Gift of Edition Jacob Samuel and the artists



GERT TOBIAS (German, born Romania 1973)

UWE TOBIAS (German, born Romania 1973)

Untitled

2011

Aquatint with etching from a portfolio of eleven aquatints (seven with etching) and one etching

Sheet (each): 16 x 14" (40.6 x 35.6 cm)

The Museum of Modern Art, New York. Gift of Edition Jacob Samuel and the artists



GERT TOBIAS (German, born Romania 1973)

UWE TOBIAS (German, born Romania 1973)

Untitled

2011

Aquatint with etching from a portfolio of eleven aquatints (seven with etching) and one etching

Sheet (each): 16 x 14" (40.6 x 35.6 cm)

The Museum of Modern Art, New York. Gift of Edition Jacob Samuel and the artists



GERT TOBIAS (German, born Romania 1973)

UWE TOBIAS (German, born Romania 1973)

Untitled

2011

Aquatint with etching from a portfolio of eleven aquatints (seven with etching) and one etching

Sheet (each): 16 x 14" (40.6 x 35.6 cm)

The Museum of Modern Art, New York. Gift of Edition Jacob Samuel and the artists



GERT TOBIAS (German, born Romania 1973)

UWE TOBIAS (German, born Romania 1973)

Untitled

2011

Aquatint with etching from a portfolio of eleven aquatints (seven with etching) and one etching

Sheet (each): 16 x 14" (40.6 x 35.6 cm)

The Museum of Modern Art, New York. Gift of Edition Jacob Samuel and the artists



GERT TOBIAS (German, born Romania 1973)

UWE TOBIAS (German, born Romania 1973)

Untitled

2011

Aquatint from a portfolio of eleven aquatints (seven with etching) and one etching

Sheet (each): 16 x 14" (40.6 x 35.6 cm)

The Museum of Modern Art, New York. Gift of Edition Jacob Samuel and the artists



GERT TOBIAS (German, born Romania 1973)

UWE TOBIAS (German, born Romania 1973)

Untitled

2011

Aquatint from a portfolio of eleven aquatints (seven with etching) and one etching

Sheet (each): 16 x 14" (40.6 x 35.6 cm)

The Museum of Modern Art, New York. Gift of Edition Jacob Samuel and the artists



GERT TOBIAS (German, born Romania 1973)

UWE TOBIAS (German, born Romania 1973)

Untitled

2011

Etching from a portfolio of eleven aquatints (seven with etching) and one etching

Sheet (each): 16 x 14" (40.6 x 35.6 cm)

The Museum of Modern Art, New York. Gift of Edition Jacob Samuel and the artists



KARA WALKER (American, born 1969)

Buzzard's Roost Pass from Harper's Pictorial History of the Civil War (Annotated)

2005

One from a portfolio of fifteen lithograph and screenprints

composition (irreg.): 42 1/4 x 27 9/16" (107.3 x 70 cm); sheet: 53 x 39" (134.6 x 99.1 cm)

The Museum of Modern Art, New York. General Print Fund and The Ralph E. Shikes Fund



KARA WALKER (American, born 1969)

Confederate Prisoners Being Conducted from Jonesborough to Atlanta from Harper's Pictorial History of the Civil War (Annotated)

2005

One from a portfolio of fifteen lithograph and screenprints

composition (irreg.): 27 1/16 x 33 3/8" (68.7 x 84.8 cm); sheet: 39 x 53" (99.1 x 134.6 cm)

The Museum of Modern Art, New York. General Print Fund and The Ralph E. Shikes Fund



KARA WALKER (American, born 1969)

Exodus of Confederates from Atlanta from Harper's Pictorial History of the Civil War (Annotated)

2005

One from a portfolio of fifteen lithograph and screenprints

composition (irreg.): 28 9/16 x 33 11/16" (72.5 x 85.5 cm); sheet: 39 1/16 x 52 15/16" (99.2 x 134.4 cm)

The Museum of Modern Art, New York. General Print Fund and The Ralph E. Shikes Fund



KARA WALKER (American, born 1969)

Foote's Gun-Boats Ascending to Attack Fort Henry from Harper's Pictorial History of the Civil War (Annotated)

2005

One from a portfolio of fifteen lithograph and screenprints

composition (irreg.): 22 7/16 x 33 5/8" (57 x 85.4 cm); sheet: 39 x 53" (99.1 x 134.6 cm)

The Museum of Modern Art, New York. General Print Fund and The Ralph E. Shikes Fund



KARA WALKER (American, born 1969)

Lost Mountain at Sunrise from Harper's Pictorial History of the Civil War (Annotated)

2005

One from a portfolio of fifteen lithograph and screenprints

composition (irreg.): 16 15/16 x 34 7/16" (43.1 x 87.4 cm); sheet: 39 x 53" (99.1 x 134.6 cm)

The Museum of Modern Art, New York. General Print Fund and The Ralph E. Shikes Fund



KARA WALKER (American, born 1969)

Occupation of Alexandria from Harper's Pictorial History of the Civil War (Annotated)

2005

One from a portfolio of fifteen lithograph and screenprints

composition (irreg.): 22 3/4 x 34 1/8" (57.8 x 86.7 cm); sheet: 39 x 53" (99.1 x 134.6 cm)

The Museum of Modern Art, New York. General Print Fund and The Ralph E. Shikes Fund



KARA WALKER (American, born 1969)

Signal Station, Summit of Maryland Heights from Harper's Pictorial History of the Civil War (Annotated)

2005

One from a portfolio of fifteen lithograph and screenprints

composition (irreg.): 34 9/16 x 24 5/8" (87.8 x 62.5 cm); sheet: 53 x 39" (134.6 x 99.1 cm)

The Museum of Modern Art, New York. General Print Fund and The Ralph E. Shikes Fund



KELLEY WALKER (American, born 1969)

Andy Warhol Doesn't Play Second Base for the Chicago Cubs

2010

Series of 39 screenprints on MDF panels

each: 17 1/4 x 13 x 3/4" (43.8 x 33 x 1.9 cm); composition: variable; installation: variable

The Museum of Modern Art, New York. Committee on Prints and Illustrated Books Fund with additional support from Katharina Faerber and the Print Associates Fund in honor of Deborah Wye



DAN WALSH (American, born 1960)

1/2 Round

2008

Artist's book

page (each): 9 5/16 x 12 3/16" (23.7 x 31 cm); overall (closed): 9 7/16 x 12 3/8 x 3/8" (24 x 31.4 x 1 cm)

The Museum of Modern Art, New York. Gift of the Fund for the Twenty-First Century



DAN WALSH (American, born 1960)

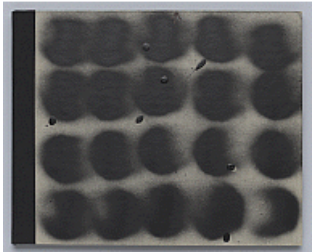
1/2 Round

2008

Artist's book

page (each): 9 5/16 x 12 3/16" (23.7 x 31 cm); overall (closed): 9 7/16 x 12 3/8 x 3/8" (24 x 31.4 x 1 cm)

Collection the artist, courtesy Paula Cooper Gallery, New York



DAN WALSH (American, born 1960)

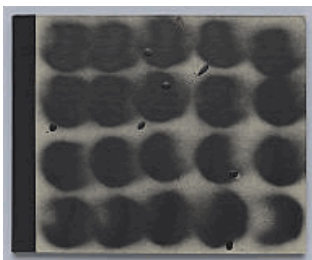
Screens

2008

Artist's book

page (each): 7 9/16 x 9 7/16" (19.2 x 24 cm); closed: 7 13/16 x 9 7/16 x 1/2" (19.8 x 24 x 1.2 cm)

The Museum of Modern Art, New York. Gift of the Fund for the Twenty-First Century



DAN WALSH (American, born 1960)

Screens

2008

Artist's book

page (each): 7 9/16 x 9 7/16" (19.2 x 24 cm); closed: 7 13/16 x 9 7/16 x 1/2" (19.8 x 24 x 1.2 cm)

Collection the artist, courtesy Paula Cooper Gallery, New York



DAN WALSH (American, born 1960)

Textiline

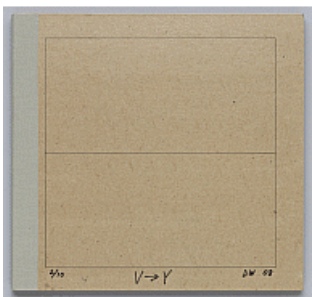
2008

Artist's book

Each Page: 13 x 12 11/16" (33 x 32.3 cm)

Closed: 13 x 12 11/16 x 1/2" (33 x 32.3 x 1.2 cm)

Collection the artist, courtesy Paula Cooper Gallery, New York



DAN WALSH (American, born 1960)

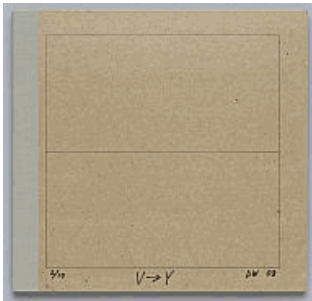
V > Y

2008

Artist's book

page (each): 9 1/2 x 9 15/16" (24.2 x 25.3 cm); overall (closed): 9 9/16 x 10 1/16 x 1/2" (24.3 x 25.6 x 1.2 cm)

The Museum of Modern Art, New York. Gift of the Fund for the Twenty-First Century



DAN WALSH (American, born 1960)

V > Y

2008

Artist's book

page (each): 9 1/2 x 9 15/16" (24.2 x 25.3 cm); overall (closed): 9 9/16 x 10 1/16 x 1/2" (24.3 x 25.6 x 1.2 cm)

Collection the artist, courtesy Paula Cooper Gallery, New York



DAN WALSH (American, born 1960)

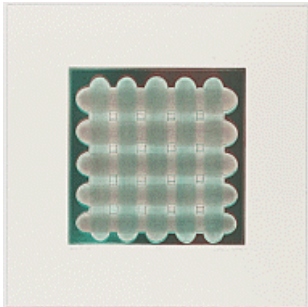
Plate IV from Folio B

2010

Aquatint with drypoint from a series of five aquatints (one with drypoint, two with etching and drypoint), and one etching

plate: 12 x 12" (30.5 x 30.5 cm); sheet: 20 x 20" (50.8 x 50.8 cm)

The Museum of Modern Art, New York. Committee on Prints and Illustrated Books Fund



DAN WALSH (American, born 1960)

Plate V from Folio B

2010

Aquatint from a series of five aquatints (one with drypoint, two with etching and drypoint), and one etching

plate: 12 x 12" (30.5 x 30.5 cm); sheet: 20 x 20" (50.8 x 50.8 cm)

The Museum of Modern Art, New York. Committee on Prints and Illustrated Books Fund



FRANZ WEST (Austrian, born 1947)

Untitled from Conventional Dichotomy (Konventionelle Dichotomie)

1990

One from a portfolio of six double-sided screenprints

sheet: 30 3/16 x 40 15/16" (76.6 x 104 cm)

The Museum of Modern Art, New York. Mary Ellen Oldenburg Fund



FRANZ WEST (Austrian, born 1947)

Untitled from Conventional Dichotomy (Konventionelle Dichotomie)

1990

One from a portfolio of six double-sided screenprints

sheet: 24 1/2 x 40 15/16" (62.2 x 104 cm)

The Museum of Modern Art, New York. Mary Ellen Oldenburg Fund



FRANZ WEST (Austrian, born 1947)

Untitled from Conventional Dichotomy (Konventionelle Dichotomie)

1990

One from a portfolio of six double-sided screenprints

sheet: 24 3/4 x 39 3/8" (62.8 x 100 cm)

The Museum of Modern Art, New York. Mary Ellen Oldenburg Fund



FRANZ WEST (Austrian, born 1947)

Untitled from Conventional Dichotomy (Konventionelle Dichotomie)

1990

One from a portfolio of six double-sided screenprints

sheet: 30 3/8 x 43" (77.1 x 109.2 cm)

The Museum of Modern Art, New York. Mary Ellen Oldenburg Fund



FRANZ WEST (Austrian, born 1947)

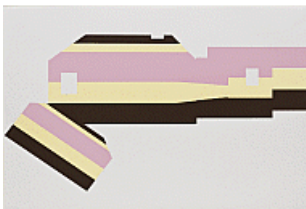
Untitled from Conventional Dichotomy (Konventionelle Dichotomie)

1990

One from a portfolio of six double-sided screenprints

sheet: 45 15/16 x 26 9/16" (116.7 x 67.5 cm)

The Museum of Modern Art, New York. Mary Ellen Oldenburg Fund



PAE WHITE (American, born 1963)

City/Uncity from Untitled

1999

One from a portfolio of six screenprints

composition: 18 7/16 x 35 7/8" (46.8 x 91.2 cm); sheet: 24 x 35 7/8" (60.9 x 91.2cm)

The Museum of Modern Art, New York. Howard Johnson Fund



PAE WHITE (American, born 1963)

For Rent from Untitled

1999

One from a portfolio of six screenprints

composition and sheet: 24 x 36" (61 x 91.4 cm)

The Museum of Modern Art, New York. Howard Johnson Fund



PAE WHITE (American, born 1963)

My Melody from Untitled

1999

One from a portfolio of six screenprints

composition: 27 9/16 x 20 11/16" (70 x 52.5 cm); sheet: 35 15/16 x 24" (91.3 x 61cm)

The Museum of Modern Art, New York. Howard Johnson Fund



PAE WHITE (American, born 1963)

Night Fish from Untitled

1999

One from a portfolio of six screenprints

composition: 13 15/16 x 31 1/2" (35.4 x 80cm); sheet: 24 x 35 7/8" (60.9 x 91.2 cm)

The Museum of Modern Art, New York. Howard Johnson Fund



CHRISTOPHER WOOL (American, born 1955)

Untitled

2006

Screenprint

Sheet: 72 x 55 1/4" (182.9 x 140.3 cm)

Collection of Seth and Cori Berger, New York



CHRISTOPHER WOOL (American, born 1955)

Untitled

2007

Enamel on linen

9 x 9' (274.3 x 274.3 cm)

The Museum of Modern Art, New York. Nina and Gordon Bunshaft Bequest Fund



CHRISTOPHER WOOL (American, born 1955)

Untitled

2008

Screenprint

Sheet: 72 x 55 1/4" (182.9 x 140.3 cm)

Kravis Collection



CHRISTOPHER WOOL (American, born 1955)
Untitled
 2008
 Screenprint
 Sheet: 72 x 55 1/4" (182.9 x 140.3 cm)
 Collection of Sarah and Gary Wolkowitz, New York



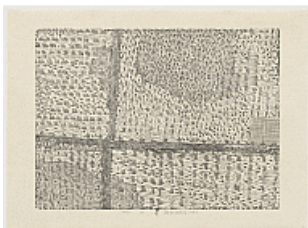
XU BING (Chinese, born 1955)
Black Pond from Series of Repetitions
 1987
 One from a series of ten woodcuts
 composition: 19 7/8 x 27 3/4" (50.5 x 70.5 cm); sheet: 25 1/2 x 34 15/16" (64.8 x 88.7 cm)
 The Museum of Modern Art, New York. Riva Castleman Endowment Fund



XU BING (Chinese, born 1955)
Cropland from Series of Repetitions
 1987
 One from a series of ten woodcuts
 composition: 21 3/4 x 28 9/16" (55.2 x 72.6 cm); sheet: 26 5/16 x 35 5/8" (66.8 x 90.5 cm)
 The Museum of Modern Art, New York. Riva Castleman Endowment Fund



XU BING (Chinese, born 1955)
Dry Pond from Series of Repetitions
 1987
 One from a series of ten woodcuts
 composition: 21 9/16 x 28 11/16" (54.8 x 72.8 cm); sheet: 26 3/16 x 35 5/8" (66.5 x 90.5 cm)
 The Museum of Modern Art, New York. Riva Castleman Endowment Fund



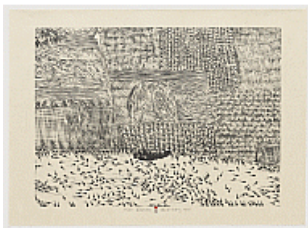
XU BING (Chinese, born 1955)
Field from Series of Repetitions
 1987
 One from a series of ten woodcuts
 composition: 21 9/16 x 29 1/16" (54.8 x 73.8 cm); sheet: 26 5/16 x 35 13/16" (66.8 x 91 cm)
 The Museum of Modern Art, New York. Riva Castleman Endowment Fund



XU BING (Chinese, born 1955)
Life Pond from Series of Repetitions
 1987
 One from a series of ten woodcuts
 composition: 19 7/8 x 26 15/16" (50.5 x 68.5 cm); sheet: 26 1/4 x 35 5/8" (66.7 x 90.5 cm)
 The Museum of Modern Art, New York. Riva Castleman Endowment Fund



XU BING (Chinese, born 1955)
Moving Cloud from Series of Repetitions
 1987
 One from a series of ten woodcuts
 composition: 20 1/2 x 28 1/4" (52 x 71.8 cm); sheet: 26 x 35 13/16" (66 x 91 cm)
 The Museum of Modern Art, New York. Riva Castleman Endowment Fund



XU BING (Chinese, born 1955)
Black Tadpoles from Series of Repetitions
 1988
 One from a series of ten woodcuts
 composition: 21 9/16 x 29 1/2" (54.8 x 75 cm); sheet: 26 5/16 x 35 13/16" (66.9 x 91 cm)
 The Museum of Modern Art, New York. Riva Castleman Endowment Fund



XU BING (Chinese, born 1955)
Haystack from Series of Repetitions
 1988
 One from a series of ten woodcuts
 composition: 18 11/16 x 28 3/16" (47.5 x 71.6 cm); sheet: 26 3/16 x 35 5/8" (66.5 x 90.5 cm)
 The Museum of Modern Art, New York. Riva Castleman Endowment Fund



LISA YUSKAVAGE (American, born 1962)
Foodeater from The Bad Habits
 1996
 Aquatint with drypoint from a series of four aquatints with drypoint and one mezzotint
 plate: 5 7/8 x 4 7/8" (14.9 x 12.4cm); sheet: 15 1/16 x 10 15/16" (38.2 x 27.8 cm)
 The Museum of Modern Art, New York. John B. Turner Fund



LISA YUSKAVAGE (American, born 1962)

Motherfucker from Bad Habits

1997

Mezzotint from a series of four aquatints with drypoint and one mezzotint
plate: 6 x 5" (15.2 x 12.6 cm); sheet: 15 1/16 x 11" (38 x 28.1 cm)

The Museum of Modern Art, New York. John B. Turner Fund



LISA YUSKAVAGE (American, born 1962)

Asspicker from The Bad Habits

1998

Aquatint with drypoint from a series of four aquatints with drypoint and one mezzotint

plate: 6 x 5" (15.2 x 12.7 cm); sheet: 15 1/16 x 11" (38 x 28.1 cm)

The Museum of Modern Art, New York. John B. Turner Fund



LISA YUSKAVAGE (American, born 1962)

Headshrinker from The Bad Habits

1998

Aquatint with drypoint from a series of four aquatints with drypoint and one mezzotint

plate: 6 x 5" (15.2 x 12.5 cm); sheet: 15 1/16 x 11 1/16" (38 x 28.1 cm)

The Museum of Modern Art, New York. John B. Turner Fund



LISA YUSKAVAGE (American, born 1962)

Socialclimber from The Bad Habits

1998

Aquatint with drypoint from a series of four aquatints with drypoint and one mezzotint

plate: 5 15/16 x 5" (15.1 x 12.7 cm); sheet: 14 15/16 x 11 1/16" (38 x 28.1 cm)

The Museum of Modern Art, New York. John B. Turner Fund