

### Jeff Wall

The Museum of Modern Art, New York February 25, 2007 - May 14, 2007

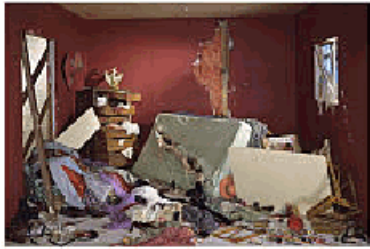
6th Floor Special Exhibitions

The Art Institute of Chicago June 30, 2007 - September 23, 2007

San Francisco Museum of Modern Art October 27, 2007 - January 27, 2008

---

JEFF WALL Canadian, born 1946



1. *The Destroyed Room. 1978*  
Silver dye bleach transparency; aluminium light box  
62 5/8 x 92 1/8 in. (159.1 x 234 cm)  
National Gallery of Canada, Ottawa  
Purchased 1988



2. *Picture for Women. 1979*  
Silver dye bleach transparency; aluminum light box  
56 1/8 x 6 ft. 8 1/2 in. (142.5 x 204.5 cm)  
Collection of the artist



3. *Double Self-Portrait. 1979*  
Silver dye bleach transparency (Cibachrome); aluminum light box  
67 11/16 x 90 3/16" (172 x 229 cm)  
Art Gallery of Ontario, Toronto. Purchase



4. *Steves Farm, Steveston. 1980, printed 1985*  
Silver dye bleach transparency; aluminum light box  
22 13/16 x 89 15/16" (58 x 228.5 cm)  
Collection of the McIntosh Gallery, The University of Western Ontario.  
Gift of John Labatt Limited

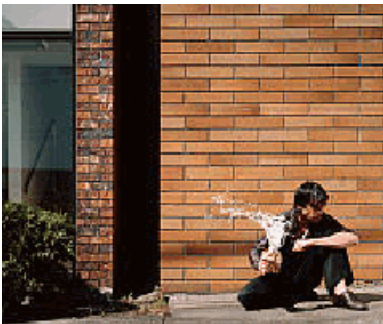
JEFF WALL Canadian, born 1946



5. *Mimic.* 1982  
Silver dye bleach transparency; aluminum light box  
77 15/16 x 89 15/16" (198 x 228.5 cm)  
Ydessa Hendeles Art Foundation, Toronto



6. *Doorpusher.* 1984  
Silver dye bleach transparency; aluminum light box  
98 1/16 x 48 1/16" (249 x 122 cm)  
Goetz Collection, Munich



7. *Milk.* 1984  
Silver dye bleach transparency; aluminum light box  
Image: 6 ft. 2 1/2 in. x 7 ft. 6 1/4 in. (189.2 x 229.2 cm)  
Lightbox: 6 ft. 8 1/2 in. x 8 ft. 1/2 in. x 8 3/4 in. (204.5 x 245.1 x 22.2 cm)  
Acquired through the Mary Joy Thomson Legacy



8. *The Storyteller.* 1986  
Silver dye bleach transparency; aluminum light box  
90 3/16 x 172 1/16 in. (229 x 437 cm)  
The Metropolitan Museum of Art, New York. Purchase, Charlene and David Howe, Henry Nias Foundation Inc., Jennifer and Robert Yaffa, Harriet Ames Charitable Trust, and Gary and Sarah Wolkowitz Gifts.

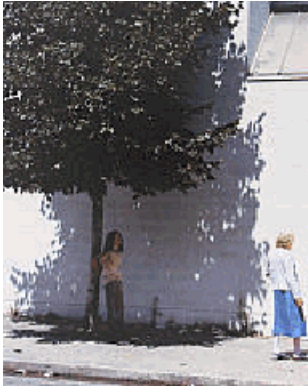


9. *The Old Prison.* 1987  
Silver dye bleach transparency; aluminum light box  
27 9/16 x 89 15 /16" (70 x 228.5 cm)  
Collection of Jörg Johnen, Cologne

JEFF WALL Canadian, born 1946



10. *An Eviction*. 1988/2004  
Silver dye bleach transparency; aluminum light box  
90 3/16 x 163" (229 x 414 cm)  
Ydessa Hendeles Art Foundation, Toronto



11. *Trân Đức Ván*. 1988/2003  
Silver dye bleach transparency; aluminum light box  
114 3/16 x 90 3/16" (290 x 229 cm)  
Carnegie Museum of Art, Pittsburgh. A.W. Mellon Acquisition  
Endowment Fund and gift of Milton Fine



12. *Coastal Motifs*. 1989  
Silver dye bleach transparency; aluminum light box  
46 7/8 x 57 7/8 in. (119 x 147 cm)  
Collection of the artist



13. *Some Beans*. 1990  
Silver dye bleach transparency; aluminum light box  
71 5/8 x 90 3/16" (182 x 229 cm)  
Collection of the artist



14. *An Octopus*. 1990  
Silver dye bleach transparency; aluminum light box  
71 5/8 x 90 3/16" (182 x 229 cm)  
Private collection. Courtesy Hauser & Wirth Zürich

JEFF WALL Canadian, born 1946



15. *A ventriloquist at a birthday party in October 1947.* 1990  
Silver dye bleach transparency; aluminum light box  
90 3/16 x 138 3/4" (229 x 352.5 cm)  
Emanuel Hoffmann Foundation, on permanent loan to the Öffentliche  
Kunstsammlung Basel



16. *Dead Troops Talk (a vision after an ambush of a Red Army Patrol, near Moqor, Afghanistan, winter 1986).* 1992  
Silver dye bleach transparency; aluminum light box  
90 3/16 x 164 3/16" (229 x 417 cm)  
David N. Pincus, Philadelphia



17. *Adrian Walker, artist, drawing from a specimen in a laboratory in the Dept. of Anatomy at the University of British Columbia, Vancouver.* 1992  
Silver dye bleach transparency; aluminum light box  
46 7/8 x 64 9/16" (119 x 164 cm)  
De Pont Museum of Contemporary Art, Tilburg, The Netherlands



18. *Diagonal Composition.* 1993  
Silver dye bleach transparency; aluminum light box  
15 3/4 x 18 1/8" (40 x 46 cm)  
Collection Norman and Norah Stone, San Francisco. Courtesy Thea  
Westreich Art Advisory Services



19. *A Sudden Gust of Wind (after Hokusai).* 1993  
Silver dye bleach transparency; aluminum light box  
90 3/16 x 148 7/16" (229 x 377 cm)  
Tate, London. Purchased with the assistance from the Patrons of New  
Art through the Tate Gallery Foundation and from the National Art  
Collections Fund



20. *Restoration.* 1993  
Silver dye bleach transparency; aluminum light box  
46 7/8 x 16 ft. 7/8" (119 x 490 cm)  
Acquired through the Mary Joy Thomson Legacy

JEFF WALL Canadian, born 1946



21. *Insomnia.* 1994  
Silver dye bleach transparency; aluminum light box  
67 11/16 x 84 1/16" (172 x 213.5 cm)  
Collection of the artist



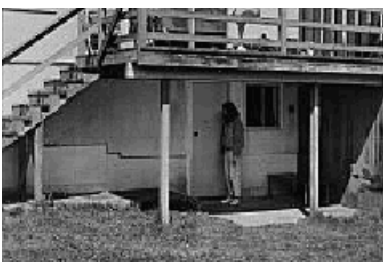
22. *Volunteer.* 1996  
Gelatin silver print  
87 3/16 x 123 1/4" (221.5 x 313 cm)  
Emanuel Hoffmann Foundation, on permanent loan to the Öffentliche  
Kunstsammlung Basel



23. *Passerby.* 1996  
Gelatin silver print  
98 7/16 x 133 11/16" (250 x 339.5 cm)  
Kunstmuseum Wolfsburg



24. *Sunken Area.* 1996  
Silver dye bleach transparency; aluminum light box  
85 13/16 x 107 7/8" (218 x 274 cm)  
Astrup Fearnley Collection, Oslo



25. *Rear, 304 E 25th Ave., May 20, 1997, 1.14 & 1.17 p.m..* 1997  
Gelatin silver print  
90 3/16 x 137 5/8" (229 x 349.5 cm)  
The Buhl Collection, New York

JEFF WALL Canadian, born 1946



26. *Diagonal Composition no. 2.* 1998  
Silver dye bleach transparency; aluminum light box  
20 11/16 x 25 3/16" (52.5 x 64 cm)  
Courtesy of Marian Goodman Gallery, New York



27. *The Flooded Grave.* 1998-2000  
Silver dye bleach transparency; aluminum light box  
89 15/16 x 111" (228.5 x 282 cm)  
The Art Institute of Chicago, promised gift of Pamela J. and Michael N. Alper; Claire and Gordon Prussian Fund for Contemporary Art; Harold L. Stuart Endowment; through prior acquisitions of the Mary and Leigh Block Collection



28. *Morning Cleaning, Mies van der Rohe Foundation, Barcelona.* 1999  
Silver dye bleach transparency; aluminum light box  
73 5/8 x 138 3/16" (187 x 351 cm)  
Walker Art Center, Minneapolis, T.B. Walker Acquisition Fund



29. *After "Invisible Man" by Ralph Ellison, the Prologue.* 1999-2000, printed 2001  
Silver dye bleach transparency; aluminum light box  
5 ft. 8 1/2 in. x 8ft. 2 3/4 in. (174 x 250.8 cm)  
The Photography Council Fund, Horace W. Goldsmith Fund through Robert B. Menschel, and acquired through the generosity of Jo Carole and Ronald S. Lauder and Carol and David Appel



30. *After "Spring Snow" by Yukio Mishima, chapter 34.* 2000-2005, photographed 2002  
Pigmented inkjet print  
23 3/8 x 27" (59.3 x 68.6 cm)  
Collection of the artist. Courtesy of Marian Goodman Gallery, New York

JEFF WALL Canadian, born 1946



31. *Tattoos and Shadows*. 2000  
Silver dye bleach transparency; aluminum light box  
76 15/16 x 100 3/8" (195.5 x 255 cm)  
San Francisco Museum of Modern Art. Private collection and  
Accessions Committee Fund: gift of Jean and James E. Douglas, Jr.,  
Carla Emil and Rich Silverstein, Doris and Donald Fisher, and Patricia  
and Raoul Kennedy



32. *Diagonal Composition no. 3*. 2000  
Silver dye bleach transparency; aluminium light box  
29 5/16 x 37" (74.5 x 94 cm)  
San Francisco Museum of Modern Art. Fractional and promised gift of  
Carla Emil and Rich Silverstein



33. *Rainfilled suitcase*. 2001  
Silver dye bleach transparency; aluminium lightbox  
25 3/8 x 31 1/2" (64.5 x 80 cm)  
Collection of the artist



34. *Overpass*. 2001  
Silver dye bleach transparency; aluminum light box  
84 1/4 x 107 11/16" (214 x 273.5 cm)  
La Colección Jumex, México



35. *Night*. 2001  
Gelatin silver print  
94 1/8 x 118 11/16" (239 x 301.5 cm)  
High Museum of Art, Atlanta. Purchase with High Museum of Art  
Enhancement Fund and Capital Campaign Fund

JEFF WALL Canadian, born 1946



36. *Fieldwork. Excavation of the floor of a dwelling in a former Sto:lo nation village, Greenwood Island, Hope, B.C., August, 2003, Anthony Graesch, Dept. of Anthropology, University of California at Los Angeles, working with Riley Lewis of the Sto:lo band. 2003*  
Silver dye bleach transparency; aluminum light box  
86 7/16 x 111 5/8" (219.5 x 283.5 cm)  
Collection of the artist



37. *Staining bench, furniture manufacturer's, Vancouver. 2003*  
Silver dye bleach transparency; aluminium lightbox  
77.5 x 96 cm  
Private collection, Atherton, California



38. *A view from an apartment. 2004-2005*  
Silver dye bleach transparency; aluminum light box  
65 3/4 x 96 1/16" (167 x 244 cm)  
Tate, London. Purchased with assistance from the American Fund for the Tate Gallery and Tate Members 2006, London



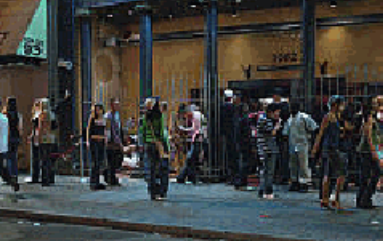
39. *Poppies in a garden. 2005*  
Silver dye bleach transparency; aluminium lightbox  
37 3/8 x 46 7/16" (95 x 118 cm)  
Collection of the artist



40. *A Woman Consulting a Catalogue. 2005*  
Silver dye bleach transparency; aluminium lightbox  
45 7/8 x 58 1/4" (116.6 x 148 cm)  
Sender Collection, New York



JEFF WALL Canadian, born 1946



41.

*In front of a nightclub.* 2006

Silver dye bleach transparency; aluminium lightbox

89 x 142 1/16" (226 x 360.8 cm)

Collection of the Pilara Family Foundation; promised gift to the San Francisco Museum of Modern Art.