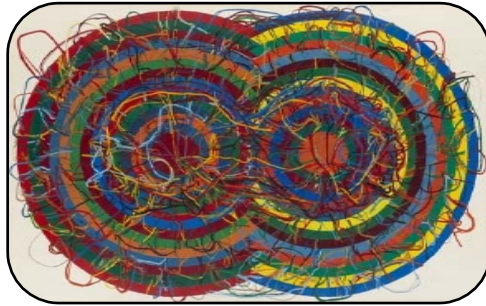


The Museum of Modern Art

Corporate Card Benefits



Free admission and priority entrance for the cardholder and up to four guests. No tickets required—simply present card to be scanned at the gallery entrance in the Museum lobby.

10% discount on purchases at the [MoMA Stores](#) (in person only)

Free tickets to MoMA film programs Pick up same-day tickets at the lobby information desk (weekdays after 1:00 p.m., weekends after 9:30 a.m.) or at the film desk (weekdays after 4:00 p.m., weekends after 1:00 p.m.). Advance tickets are available one week prior to screenings for a service fee of \$1.50 per ticket.

Discounts on parking, shopping, hotels, and more (see below)

Accommodations

Rates are subject to availability.

Chambers

chambershotel.com

15 West 56 Street

(212) 974-5656

Use code MoMA.

Hilton New York

newyorkhiltonhotel.com

(877) NYC-HILT

Use code MOMANY.

Cassa Hotel & Residences

cassahotelny.com

70 West 45 Street

(212) 302-8700

(888) 53-CASSA

Use code MOM.

Parking

Rates are subject to availability. Have ticket validated at the Member Services desk.

Icon Parking Systems

94 West 54 Street &

75 West 53 Street

(between Fifth and Sixth Avenues)

Rates: up to 4 hours: \$17;

up to 12 hours: \$20; up to

24 hours: \$30

Oversize vehicles subject to an extra charge of \$10

1345 Garage

101-41 West 54 Street

(between Sixth and Seventh Avenues, left side of the street)

Rates: up to 4 hours: \$18;

4-7 hours: \$24; 7-24

hours: \$33

Ampco System Parking

17 East 54 Street

Rates: up to 4 hours: \$25; 4-8 hours: \$30; 8-9 hours: \$38

Central Parking Systems

25 West 55 Street

Rates: up to 4 hours: \$25;

4-24 hours: \$38

Shopping and Dining

Present Corporate Card for discounts.

The MoMA Stores

MoMAstore.org

Save 10% (in person only)

Cafe 2 and Terrace 5

10% off the total bill during Museum hours

The Bar Room at The Modern

themodernnyc.com

10% off the total bill between the hours of 3:00 and 5:00 p.m.

artbook@MoMA PS1

22-25 Jackson Avenue in Queens

15% off all on-site purchases

DaVinci Artist Supply

davinciartistsupply.com

Multiple locations
10% off all on-site purchases

Il Gattopardo

ilgattopardonyc.com

33 West 54 Street
(212) 246-0412
10% off lunch and dinner

Lee's Art Shop

leesartshop.com

220 West 57 Street
(212) 247-0110
10% off merchandise in the Art Shop, excluding furniture and lighting

Subscription Publications

Aperture

(866) 457-4603

4 issues for \$36 (add \$25 for non-U.S. orders)
Use code 407.

Artforum International

(877) 514-6871

10 issues for \$39
Use code 7MOMA.

ARTnews

(800) 284-4625

11 issues for \$32.95
Use code MVMUSE.

Art in America

(800) 925-8059

12 issues for \$24.95
Use code D1008MOMA.

Art Review

(800) 428-3003

9 issues for \$49.50
Use code MMA45.

BOMB

(866) 354-0334

5 issues for \$20
Use code NM060MOMOO.

The Burlington Magazine

burlington.org.uk

12 issues for \$415.10

E-mail

subs@burlington.org.uk to subscribe with code MoMA1.

Film Comment

(888) 313-6085

6 issues for \$14.95
Use code 3MMA11.

Frieze

+44 20 3372 6102

8 issues for \$72
Use code MoMA10.

Interview

(800) 925-9574

10 issues for \$9.95
Use code D1009MOMA.

New York Magazine

(800) 678-0900

42 issues for \$19.97
Use code AOHTMA.

Print

(386) 246-3361

6 issues for \$28.50
Use code J0JMMA.

Time Out New York

(888) get-tony

47 issues for \$15.97
Use code 89KMMA.

Time Out New York Kids

(800) 927-4253

10 issues for \$7.97
Use code 89KMMA.

Presentation of valid Corporate Card will be necessary to redeem benefits.

Questions?

(212) 708-9840

corporate_membership@moma.org

MoMA.org/corporate

January 2012